

## Outcome of hospitalisation for COVID-19 in patients with Interstitial Lung Disease: An international multicentre study.

Thomas M Drake<sup>1</sup>, Annemarie B Docherty<sup>1</sup>, Ewen M Harrison<sup>1</sup>, Jennifer K Quint<sup>2</sup>, Huzaifa Adamali<sup>3,4</sup>, Sarah Agnew<sup>5</sup>, Suresh Babu<sup>6</sup>, Christopher M Barber<sup>7</sup>, Shaney Barratt<sup>3,4</sup>, Elisabeth Bendstrup<sup>8</sup>, Stephen Bianchi<sup>7</sup>, Diego Castillo Villegas<sup>9</sup>, Nazia Chaudhuri<sup>10,11</sup>, Felix Chua<sup>12</sup>, Robina Coker<sup>13</sup>, William Chang<sup>14</sup>, Anjali Crawshaw<sup>15</sup>, Louise E. Crowley<sup>16</sup>, Davinder Dosanjh<sup>15</sup>, Christine A Fiddler<sup>17</sup>, Ian A. Forrest<sup>18</sup>, Peter George<sup>2,12</sup>, Michael A Gibbons<sup>19</sup>, Katherine Groom<sup>13</sup>, Sarah Haney<sup>20</sup>, Simon P Hart<sup>21</sup>, Emily Heiden<sup>22</sup>, Michael Henry<sup>24</sup>, Ling-Pei Ho<sup>25</sup>, Rachel K Hoyles<sup>25</sup>, John Hutchinson<sup>26</sup>, Killian Hurley<sup>27,28</sup>, Mark Jones<sup>22,23</sup>, Steve Jones<sup>29</sup>, Maria Kokosi<sup>12,40</sup>, Michael Kreuter<sup>30</sup>, Laura MacKay<sup>20</sup>, Siva Mahendran<sup>31</sup>, George Margaritopoulos<sup>10</sup>, Maria Molina-Molina<sup>32</sup>, Philip L Molyneaux<sup>2</sup>, Aiden O'Brien<sup>33</sup>, Katherine O'Reilly<sup>34</sup>, Alice Packham<sup>15</sup>, Helen Parfrey<sup>17</sup>, Venerino Poletti<sup>8,35</sup>, Joanna Porter<sup>36</sup>, Elisabetta Renzoni<sup>12</sup>, Pilar Rivera-Ortega<sup>10</sup>, Anne-Marie Russell<sup>2,41</sup>, Gauri Saini<sup>14</sup>, Lisa G Spencer<sup>5</sup>, Giulia M. Stella<sup>37</sup>, Helen Stone<sup>38</sup>, Sharon Sturney<sup>39</sup>, David Thickett<sup>15,16</sup>, Muhunthan Thillai<sup>17</sup>, Tim Wallis<sup>22,23</sup>, Katie Ward<sup>2</sup>, Athol U Wells<sup>12</sup>, Alex West<sup>40</sup>, Melissa Wickremasinghe<sup>41</sup>, Felix Woodhead<sup>42</sup>, Glenn Hearson<sup>43</sup>, Lucy Howard<sup>43</sup>, J Kenneth Baillie<sup>44</sup>, Peter J.M. Openshaw<sup>2</sup>, Malcolm G Semple<sup>45</sup>, Iain Stewart<sup>43</sup>, ISARIC4C Investigators, R Gisli Jenkins<sup>14,43</sup>

1 Centre for Medical Informatics, The Usher Institute, University of Edinburgh, Edinburgh, EH16 4UX

2 National Heart and Lung Institute, Imperial College, London, UK

3 Bristol Interstitial Lung Disease Service, North Bristol NHS Trust, Southmead Hospital, Bristol, UK, BS10 5NB.

4 Academic Respiratory Unit, University of Bristol, Southmead Hospital, Bristol, BS10 5NB.

5 Liverpool Interstitial Lung Disease Service, Aintree site, Liverpool University Hospitals NHS Foundation Trust, Liverpool, L9 7AL, UK.

6 Queen Alexandra Hospital, Portsmouth, UK.

7 Northern General Hospital, Sheffield, S5 7AU, UK.

8 Centre for Rare Lung Diseases, Department of Respiratory Diseases and Allergy, Aarhus University Hospital, Palle Juul-Jensens Boulevard 99, 8200 Aarhus N, Denmark

9 ILD Unit, Respiratory Medicine Department, Hospital de la Santa Creu i Sant Pau, Barcelona, Spain.

10 ILD Unit, Manchester University Hospital NHS FT, Wythenshawe Hospital, Southmoor Road, Wythenshawe, Manchester M23 9LT, UK

11 University of Manchester, Manchester, UK

12 Royal Brompton and Harefield NHS Foundation Trust, London, UK

13 Respiratory Medicine, Hammersmith Hospital, Imperial College Healthcare NHS Trust, London W12 0HS, UK

14 Nottingham University Hospitals NHS Trust, City Campus, Nottingham, NG5 1PB, UK

15 Birmingham Interstitial Lung Disease Unit, Queen Elizabeth Hospital Birmingham, University Hospitals Birmingham NHS Foundation Trust, Birmingham, UK.

16 University of Birmingham, Birmingham, UK.

17 Cambridge Interstitial Lung Disease Service, Royal Papworth Hospital NHS Foundation Trust, Cambridge Biomedical Campus, Cambridge CB2 0AY, UK

18 Department of Respiratory Medicine, Royal Victoria Infirmary, Newcastle upon Tyne Hospitals NHS Foundation Trust, Newcastle upon Tyne, NE1 4LP, UK

This preprint reports new research that has not been certified by peer review and should not be used to guide clinical practice.

- 19 South West Peninsula ILD Network, Royal Devon & Exeter Foundation NHS Trust  
Barrack Road, Exeter EX2 5DW, UK
- 20 Northumbria Specialist Emergency Care Hospital, Northumbria Way, Northumbria  
Healthcare NHS Foundation Trust, Cramlington, NE23 6NZ
- 21 Respiratory Research Group, Hull York Medical School, Castle Hill Hospital, Cottingham,  
UK, HU16 5JQ
- 22 University Hospitals Southampton NHS Foundation Trust, Southampton, UK
- 23 NIHR Southampton Biomedical Research Centre & Clinical and Experimental Sciences,  
University of Southampton, Southampton, UK
- 24 Cork University Hospital, Cork, Ireland
- 25 Oxford Interstitial Lung Disease Service, Oxford University Hospitals NHS Foundation  
Trust, Oxford, OX3 7LE, UK
- 26 King's Mill Hospital, Sutton-in-Ashfield, Nottinghamshire, NG17 4JL, UK
- 27 Department of Medicine, Royal College of Surgeons in Ireland, Dublin, Ireland.
- 28 Beaumont Hospital, Dublin, Ireland.
- 29 Action for Pulmonary Fibrosis, Stuart House, Peterborough, PE1 5DD, UK.
- 30 Center for interstitial and rare lung diseases, Pneumology, Thoraxklinik, University of  
Heidelberg, Germany and German Center for Lung Research, 69126 Heidelberg, Germany
- 31 Kingston Hospital NHS Foundation Trust. Galsworthy Road, Kingston upon Thames,  
Surrey KT2 7QB, UK.
- 32 ILD Unit, Respiratory Department, University Hospital of Bellvitge, IDIBELL, Hospitalet de  
Llobregat, Barcelona, Spain.
- 33 University Hospital Limerick, Dooradoyle, Limerick, Ireland.
- 34 Department of Respiratory Medicine, Mater Misericordiae University Hospital, Dublin,  
Ireland.
- 35 Department of Diseases of the Thorax, Morgagni Hospital, Forli, Italy.
- 36 UCL Respiratory, University College London and ILD Service, University College London  
Hospitals NHS Foundation Trust, London, UK.
- 37 Laboratory of Biochemistry and Genetics, Pneumology Unit, Fondazione IRCCS Policlinico  
San Matteo, Pavia, Italy.
- 38 University Hospital North Midlands NHS Trust, Royal Stoke University Hospital, Newcastle  
Road, Stoke-on-Trent, ST4 6QG, UK.
- 39 Royal United Hospitals Bath NHS Foundation Trust, Combe Park, Bath BA1 3NG, UK
- 40 Guys & St Thomas' NHS Trust, Westminster Bridge Road, London, SE1 7EH, UK
- 41 Imperial Healthcare NHS Trust, St Mary's Hospital, The Bays, S Wharf Rd, Paddington,  
London W2 1NY, UK.
- 42 Institute of Lung Health, Interstitial Lung Disease Unit, Glenfield Hospital, Leicester, LE3  
9QP, UK.
- 43 NIHR Biomedical Research Centre, Respiratory Research Unit, University of Nottingham,  
Nottingham NG5 1PB, UK
- 44 Roslin Institute, University of Edinburgh, Edinburgh, UK and Intensive Care Unit, Royal  
Infirmary Edinburgh, Edinburgh, UK.
- 45 NIHR Health Protection Research Unit in Emerging and Zoonotic Infections, Institute of  
Infection, Veterinary and Ecological Sciences, Faculty of Health and Life Sciences, University  
of Liverpool, Liverpool, UK and Respiratory Medicine, Alder Hey Children's Hospital,  
Liverpool L12 2AP, UK

**Running title:** COVID-19 and interstitial lung disease

**Correspondence to:**

Professor Gisli Jenkins  
NIHR Research Professor and Professor of Experimental Medicine  
NIHR BRC Nottingham Respiratory Research Unit  
University of Nottingham  
Hucknall Road  
Nottingham  
UK NG14 7FW

**Telephone:** +44 115 823 1711

**E-mail:** [gisli.jenkins@nottingham.ac.uk](mailto:gisli.jenkins@nottingham.ac.uk)

**Author contributions:** RGJ designed and conceived the study and drafted the manuscript. TMD analysed the data and drafted the manuscript. ABD, EMH, JKQ, IS developed the analysis plan and analysed the data and revised the manuscript. LH, GH collated and curated all data and revised the manuscript. HA, SA, SB, CMB, SB, EB, SB, DCV, NC, FC, RC, WC, AC, LEC, DD, CAF, IAF, PG, MAG, KG, SH, SPH, EH, MH, LPH, RKH, JH, KH, MJ, MK, MK, LM, SV, GM, MMM, PLM, AOB, KOR, AP, HP, VP, JP, ER, PRO, AMR, GS, LGS, GMS, HS, SS, DT, MT, TW, KW, AUW, AW, MW, FW, JKB, PJMO, MGS helped design the study, contributed data and revised the manuscript for important intellectual content. SJ helped design study and revised the manuscript for important intellectual content. All authors have provided final approval of the version submitted for publication; and agreement to be accountable for all aspects of the work in ensuring that questions related to the accuracy or integrity of any part of the work are appropriately investigated and resolved.

**Subject descriptor:** 9.23 Interstitial Lung Disease

**Abstract word count:** 245

**Text word count:** 2990

## Abstract

**Rationale:** The impact of COVID-19 on patients with Interstitial Lung Disease (ILD) has not been established.

**Objectives:** To assess outcomes following COVID-19 in patients with ILD versus those without in a contemporaneous age, sex and comorbidity matched population.

**Methods:** An international multicentre audit of patients with a prior diagnosis of ILD admitted to hospital with COVID-19 between 1 March and 1 May 2020 was undertaken and compared with patients, without ILD obtained from the ISARIC 4C cohort, admitted with COVID-19 over the same period. The primary outcome was survival. Secondary analysis distinguished IPF from non-IPF ILD and used lung function to determine the greatest risks of death.

**Measurements and Main Results:** Data from 349 patients with ILD across Europe were included, of whom 161 were admitted to hospital with laboratory or clinical evidence of COVID-19 and eligible for propensity-score matching. Overall mortality was 49% (79/161) in patients with ILD with COVID-19. After matching ILD patients with COVID-19 had higher mortality (HR 1.60, Confidence Intervals 1.17-2.18  $p=0.003$ ) compared with age, sex and comorbidity matched controls without ILD. Patients with a Forced Vital Capacity (FVC) of <80% had an increased risk of death versus patients with FVC  $\geq 80\%$  (HR 1.72, 1.05-2.83). Furthermore, obese patients with ILD had an elevated risk of death (HR 1.98, 1.13–3.46).

**Conclusions:** Patients with ILD are at increased risk of death from COVID-19, particularly those with poor lung function and obesity. Stringent precautions should be taken to avoid COVID-19 in patients with ILD.

## Introduction

Interstitial Lung Diseases (ILDs) represent a group of fibroinflammatory diseases affecting the alveolar interstitium of the lung. ILDs are characterised by alveolar damage and interstitial thickening and, if left untreated, lead to remorseless progression of breathlessness, cough and ultimately death from respiratory failure. The prevalence of ILDs in Europe is just under one per 1,000 people, with an annual incidence of approximately 20 per 100,000 people (1). The commonest ILD is sarcoidosis, but one of the most severe ILD is Idiopathic Pulmonary Fibrosis (IPF), a high incidence of which is found in the UK (12 per 100,000) (2, 3). IPF tends to affect older people with a mean age at diagnosis of 72 years. Men are more often affected than women. Furthermore, IPF is associated with diabetes mellitus type 2 (DMT2), hypertension (HT) and ischaemic heart disease (IHD) (4, 5). People suffering from other ILDs (non-IPF ILD) tend to be younger, with a higher proportion of female sufferers, and often receive immunosuppressive therapy.

All ILDs, most notably IPF, are characterised by acute exacerbations which have a particularly high mortality rate ranging from 35-70% (6). The precise cause of acute exacerbations is unknown, but they have been associated with thoracic surgical procedures and viral infections (6). Furthermore, an acute exacerbation is associated with the development of Acute Respiratory Distress Syndrome (ARDS) which carries a high mortality and morbidity. However, there is no consensus on treatment of ARDS in this group of patients, given that mechanical ventilation is the cornerstone of supportive therapy in non-ILD patients (7).

Infection with SARS-CoV-2 may lead to COVID-19, characterised by a severe viral pneumonia and ARDS in approximately 20% of patients admitted to hospital (8). Patients most at risk of severe COVID-19 include elderly males with comorbidities including DMT2, HT and IHD

(9,10) which are shared by patients with ILD, most notably IPF (5). Despite the potential increased risk from SARS-CoV-2 infection, patients with ILD have not been uniformly advised to isolate themselves from the rest of the population to avoid infection at the onset of the COVID-19 pandemic.

To understand whether individuals with ILD are more susceptible to severe COVID-19 and should therefore be advised to self-isolate during the pandemic, we undertook an international multicentre analysis of patients admitted to hospital between the 1 March and 1 May 2020 with COVID-19. We compared outcomes of patients with ILD with age, sex and comorbidity matched controls admitted with COVID-19 but without ILD, from a prospective UK cohort, the International Severe Acute Respiratory and Emerging Infection Consortium Coronavirus Clinical Characterisation Protocol (ISARIC4C CCP-UK).

## **Methods**

### **Patients**

ILD centres throughout Europe were asked to identify all patients with a pre-existing diagnosis of ILD admitted to hospital between 1st March and 1st May 2020 during the first peak of the COVID-19 pandemic. De-identified, unlinked data from individuals were included in an audit to assess the consequence of national shielding policies. Each contributing site was asked to identify individuals admitted to their local hospital. Local hospitals were asked to include whether or not a patient was diagnosed with COVID-19 based on a SARS-CoV-2 positive polymerase chain reaction (PCR) swab and or clinico-radiological diagnosis for patient flow (Figure 1). Audit data was appended to the ISARIC4C CCP-UK database, with separate categorisation of individuals who reported an existing chronic pulmonary disease. Significant comorbidities of diabetes (type 1 or type 2), hypertension, chronic heart disease and malignancy, as well as immunomodulatory therapies, were recorded in both ILD audit data and the ISARIC database. Outcomes recorded in both datasets for each patient included ventilated status, use of continuous positive airway pressure, use of high flow oxygen and whether discharged, remained hospitalised, or died. Length of stay was censored at 1st May 2020.

### **Ethics and Consent**

All data were entered by the Local Clinical Care Team in anonymised fashion without linkage to any patient identifiers in line with national and local audit guidance. In the UK Health Research Authority guidance was followed (<https://www.hra.nhs.uk/covid-19-research/guidance-using-patient-data/>), and ethical approval was not required. ISARIC4C CCP-UK received ethical approval from the South Central - Oxford C Research Ethics

Committee in England (Ref: 13/SC/0149), and by the Scotland A Research Ethics Committee (Ref: 20/SS/0028). Data from Spain was collected under the approval for observational studies (Ref UIC-IBU-2020-03 and PR217/20). Data from Germany were collected under approval from ethics committee of the Medical faculty of the University of Heidelberg (ref S-186/2020).

### **Statistical Analysis**

Summary statistics are presented as frequencies and percentages for categorical data and mean (standard deviation (sd)) for normally distributed continuous data. Where continuous data were not normally distributed, the median (interquartile range [IQR]) was used.

Differences in categorical data were compared using the Chi-square test, or Fisher's exact test when expected counts were below 5 in any group. For continuous normally distributed 2-group data, we compared differences using Welch's T-test or Mann Whitney-U if data were not normally distributed. For multiple group comparisons of continuous data, we used Kruskal-Wallis tests. Data from the ILD dataset were matched in a 1:2 ratio with patients who did not have ILD from the ISARIC4C CCP-UK dataset using a nearest neighbour propensity-score matching algorithm. Patients in ISARIC4C CCP-UK with ILD were excluded to avoid double counting. We matched on confounders known to affect outcomes from COVID-19 disease including age, sex, diabetes, chronic cardiac disease, cancer, hypertension, and renal disease. Unmatched and matched populations were compared using standardized mean differences, plots and summary statistics. For survival analyses, time was taken as admission to death (in-hospital survival) using length of stay where date was not available. Discharge from hospital was considered an absorbing state (once discharged, patients were considered no longer at risk of death). Discharged patients were



not censored and included in the risk set until the end of follow-up, thus discharge did not compete with death. We generated subclasses based on the propensity-score distance and included these as terms within Cox proportional hazards models, where estimates are presented as hazards ratios, alongside the corresponding 95% confidence interval (11). Data were analysed using R version 3.6.3 with tidyverse, matchit and finalfit packages.

## Results

### Baseline Demographics

Between March 1<sup>st</sup> and May 1<sup>st</sup> 2020, 349 patients with ILD were admitted to 37 hospitals throughout the UK and Europe. A total of 185 ILD patients had a diagnosis of COVID-19 and 161 were suitable for propensity-score matching (Figure 1). Of these, 110 (68%) were male and the mean age was 73.2 ( $\pm$ 11.5) years. The most common ILD was IPF, with 68 (42%) patients admitted to hospital (Table 1). During the same time period, 164 patients with ILD were admitted with an alternative non-COVID diagnosis, of whom 69 (42.1%) had IPF. Overall the Case Fatality Rate (CFR) for patients with ILD and COVID-19 was 49% (79/161) compared with 17% (28/164) for patients with ILD admitted for other reasons.

### Effect of ILD on outcome from COVID-19

After propensity-score matching, 161 patients with ILD were compared with 322 patients admitted to hospital between the 1<sup>st</sup> March and 1<sup>st</sup> May 2020 but without ILD, or other chronic lung disease (Table 1). There was significantly higher mortality in patients with ILD compared with non ILD patients (49% (79/161) vs 35% (114/322)  $p=0.013$ ) and was associated with an increased risk of death in adjusted analysis (HR 1.60 CI 1.17-2.18  $p=0.003$ ). There was significantly higher mortality in patients with ILD compared with non ILD patients (figure 2), which was greatest in men and increased with age, which persisted for men after adjusting for age and comorbidity (adjusted HR 1.98, 95% CI 1.14 to 3.43,  $p=0.015$ ). The risk of mortality was greatest in patients with IPF (HR 1.74, 95%CI 1.16 to 2.60  $p=0.007$ ), but a higher mortality was also seen in non-IPF ILD (HR 1.50, 95%CI 1.02 to 2.21  $p=0.040$ ; Figure 3a) when compared with matched patients without ILD. Of patients with non-IPF ILD, those with chronic hypersensitivity pneumonitis and rheumatoid ILD had the

highest mortality (50% (7/14) and 40% (4/10) respectively), whilst those with sarcoidosis and connective tissue disease (excluding rheumatoid) related ILD had the lowest observed mortality (33% (3/9) and 23% (3/13) respectively). Overall, median length of stay in those who were still alive was not substantially different between patients without ILD (9 days [IQR 11]), compared with non-IPF ILD (10 days [IQR 8]) and IPF (10 days [IQR 8]) ( $p = 0.725$ ) (Table 2).

### **Predictors of outcome from COVID-19**

Obesity has been previously described to increase the risk of death from COVID-19. After obesity was included in the propensity score matching (129/161 ILD patients with data available, matched to 260 non-ILD patients), being obese and having ILD was significantly associated with an increased hazard of death from COVID-19 (adjusted HR 1.98, 95%CI 1.13 to 3.46,  $p = 0.016$ ; figure 3b), which was greater than the effect of obesity in non-ILD patients.

To determine whether patients with more severe ILD had a greater risk of mortality with COVID-19, the last available lung function results prior to hospital admission were analysed. For all ILD patients, the mean Forced Vital Capacity (FVC) in patients surviving COVID-19 was 82.2% predicted compared with 76.8% predicted in patients who died ( $p=0.121$ ). Similarly, the mean Diffusion coefficient of Carbon Monoxide (DLco) was 56.4% predicted in survivors compared with 49.6% in patients dying with COVID ( $p=0.072$ ; Table 3). When the FVC was dichotomized using the 80% predicted threshold between mild and moderate ILD, in line with UK prescribing policy for anti-fibrotic medication, the risk of mortality was significantly higher in patients with moderate or severe ILD (HR 1.72, 95% CI 1.05-2.83), compared with mild disease (Figure 3c).

### **Ventilatory support for ILD patients with COVID-19**

Most patients with ILD (84%; 135/161) did not receive enhanced respiratory support which was similar to matched patients without ILD (79%; 254/322; Table 2). Significantly more patients who survived did not receive enhanced respiratory support (93%, 76/82) compared with those who died (75%; 59/79  $p=0.015$ ). Of the 26 patients receiving enhanced respiratory support 77% (20) died, including 83% (5/6) of matched patients with ILD receiving ventilation (Table 4).

### **Effect of anti-fibrotic and immunosuppressive therapy on outcome from COVID-19.**

In patients with ILDs 106 were taking no immunosuppressants or anti-fibrotic of whom 50% died (53/106; Table 5). Almost a third of patients with IPF (20/68) were receiving anti-fibrotic therapy at the time of admission. Seven patients were receiving pirfenidone and 13 were receiving nintedanib. Of those receiving anti-fibrotic therapy, 50% (10/20) died. Where immunosuppressants were reported, corticosteroids were most frequently prescribed (45/55) followed by mycophenolate (17/55); overall 47% (26/55) of patients taking anti-fibrotics or immunosuppressants died. Significantly more patients with ILD received oral corticosteroids in hospital than patients without ILD (27.8% versus 9.9%;  $p<0.001$ ) but there was no difference in outcome between those receiving corticosteroids (48.9% mortality (22/55)) and those who did not (48.7% mortality (57/117)).

## Discussion

Determining the risk of poor outcome in patients pre-existing conditions who acquire SARS-CoV-2 infection is crucial to determine what mitigation measures are required in the community. Our study shows that patients with existing interstitial lung disease were at very high risk of death when hospitalised with COVID-19, especially if they have reduced prior lung function or obesity. Most died without being offered mechanical ventilation; in those who were ventilated, mortality was very high.

Known risk factors for poor outcomes in COVID-19 include increasing age, male sex, DM, HT, IHD and COPD (9,12). Unfortunately, the risk for patients with ILD has not yet been quantified because patients with uncommon diseases often do not have their specific diagnostic information recorded in large observational studies or are often not accurately reported in administrative healthcare datasets. Despite the unknown risk of COVID-19 for patients with ILD, many patients chose to self-isolate and, therefore, there appeared to be apparent 'protection' from COVID-19 observed to many ILD physicians around the world. To accurately understand the risk of COVID-19 and inform decision- and risk-matrices going forward, the European ILD community undertook an audit of hospitalised patients with ILD between the 1st March and 1st May 2020 to coincide with the first peak of COVID-19 within Europe. These data represent the largest assessment of the impact of SARS-CoV-2 infection on patients with ILD to date. They demonstrate that patients with ILD are at increased risk of death following hospitalisation for COVID-19 particularly elderly males, with poor lung and obesity.

The role of viral infection promoting acute exacerbations of ILD has been investigated for a number of years without a definitive answer, which probably reflects the range of viruses studied, the number of patients needed to explore such a hypothesis, and more broadly the challenges studying acute exacerbations of ILD (13,14,15,16). These data confirm that patients with ILD are at increased risk of mortality from COVID-19 compared with a matched population without ILD and the risk is greatest for IPF consistent with a respiratory virus inducing acute exacerbations of ILD.

Factors associated with poor prognosis in acute exacerbations of ILD include pulmonary fibrosis and poor lung function prior to admission and fibrotic ILDs (17,18,19,20). The data presented here, support these prior studies demonstrating that patients with a recorded FVC <80% predicted prior to admission had an increased mortality compared with those with an FVC >80%. Similarly, patients with fibrotic ILDs such as Chronic Hypersensitivity Pneumonitis had mortality rates comparable with IPF and higher than those with Sarcoid or Connective Tissue Disease associated ILD. Interestingly, obese patients with ILD had a substantially increased risk of mortality. This may reflect use of steroids in severe disease, although we do not favour this hypothesis as there was no apparent increased risk of death associated with corticosteroid use. Obesity may be due to limited activity in ILD patients, a condition that leads to progressive reduction in exercise tolerance as it becomes more severe (21). Alternatively, and perhaps most intriguingly, it may lend support to the hypothesis that severe ILD is part of the 'metabolic syndrome' (22).

This analysis also assessed respiratory support offered to patients hospitalised with ILD. In line with current practice and guidelines most patients did not receive any ventilatory

support (7, 23). Most patients who survived did not require enhanced respiratory support such as High Flow Oxygen, Continuous Positive Airway Pressure or ventilation, and of those receiving enhanced respiratory support the majority died. These data continue to support the use of supportive care in preference to either non-invasive or invasive mechanical ventilation except in clearly defined cases such as predominantly inflammatory ILD or bridging to transplantation.

This analysis has a number of strengths. It is the largest, international, multicentre study to assess the outcome of patients with Interstitial Lung Disease hospitalised with the respiratory infection SARS-Cov-2. Merging of the ILD Audit dataset with the ISARIC4C CCP-UK dataset enabled accurate, contemporary propensity-score matching for a number of potential confounding factors to assess the risk from COVID-19 disease. This enabled an assessment of the risk to patients with ILD infected with SARS-CoV-2, facilitating evidence-based mitigation strategies, such as self-isolation for this vulnerable group of patients.

This study also has some potential weaknesses. Due to the retrospective nature of the data collection recall bias might have led to over-selection of severe cases of COVID-19 in patients with ILD, however, this is mitigated by the large number of centres participating in the audit. Similarly, because only hospitalised patients could be included, it is possible that a large number of patients with ILD and COVID-19 were omitted and, therefore, the risk of COVID-19 could be over-stated. However, given the demographic associated with ILD we think this is unlikely. Also, the propensity-score matching included some younger patients who would be expected to have less severe disease, although there was insufficient detail in the audit data collection to match for COVID-19 severity based on admission severity scores. The effect of obesity was assessed in the matched population suggesting an increased risk in

patients without ILD, however in contrast with prior reports (9,24 ) no effect of obesity was observed in the control population. This probably reflects the relatively small numbers of patients used in the matching and the large amount of missing data relating to weight. Therefore, the data relating to obesity must be interpreted accordingly, but we believe as a modifiable risk factor it is important to highlight the risk of obesity in patients with ILD who might develop COVID-19. Finally, it was not possible to evaluate specific treatment effects, such as the use of anti-fibrotics and immunosuppressants. Only a proportion of patients received anti-fibrotics during their admission. Furthermore, due to the unknown effect of anti-fibrotics, and concerns regarding immunosuppression on the clinical course of COVID-19 there is likely to be considerable confounding due to indication. There are both potential benefits (25,26) and harms associated with background therapy for ILD (27). However, it is reassuring from a safety perspective that there was no obvious signal suggesting harms associated with therapy for ILD in patients with COVID-19, although, further study to evaluate the consequence of anti-fibrotic and immunomodulatory therapy in ILD are needed.

In summary, these data demonstrate that patients with ILD, particularly those with fibrotic ILD are at higher risk of mortality from COVID-19 than patients without ILD. Furthermore, the risk is heightened in elderly males, those with obesity or poor lung function and we would recommend dietary advice in overweight patients. Ventilatory support did not objectively improve outcomes for COVID-19 and we therefore suggest that ventilatory support only be offered in select subgroups of patients in line with current recommendations. Similarly, anti-fibrotic, or immunosuppressive medication did not objectively alter outcome and therefore we do not propose these medications should be



withheld during future COVID-19 surges. We also propose that patients with ILD, particularly severe fibrotic ILD, continue to be regarded as high risk of mortality from COVID-19 and follow national self-isolation guidelines for vulnerable individuals and be prioritised for SARS-CoV-2 vaccination at such time as it becomes available. Finally, we believe these data demonstrate the importance of international collaboration to collect data to understand the consequences of emerging threats to patients with ILD.

## References

- 1) Boris Duchemann, Isabella Annesi-Maesano, Camille Jacobe de Naurois, Shreosi Sanyal, Pierre-Yves Brillet, Michel Brauner, Marianne Kambouchner, Sophie Huynh, Jean Marc Naccache, Raphael Borie, Jacques Piquet, Arsène Mekinian, Jérôme Virally, Yurdagul Uzunhan, Jacques Cadranel, Bruno Crestani, Olivier Fain, Francois Lhote, Robin Dhote, Nathalie Saidenberg-Kermanac'h, Paul-André Rosental, Dominique Valeyre, Hilario Nunes. Prevalence and incidence of interstitial lung diseases in a multi-ethnic county of Greater Paris. *European Respiratory Journal* 2017 50: 1602419; DOI: 10.1183/13993003.02419-2016
- 2) <https://www.blf.org.uk/support-for-you/idiopathic-pulmonary-fibrosis-ipf/statistics>
- 3) Amy L. Olson, Alex H. Gifford, Naohiko Inase, Evans R. Fernández Pérez, Takafumi Suda. The epidemiology of idiopathic pulmonary fibrosis and interstitial lung diseases at risk of a progressive-fibrosing phenotype. *European Respiratory Review* 2018 27: 180077; DOI: 10.1183/16000617.0077-2018.
- 4) Kreuter M, Ehlers-Tenenbaum S, Palmowski K, Bruhwylter J, Oltmanns U, Muley T, Heussel CP, Warth A, Kolb M, Herth FJF. Impact of Comorbidities on Mortality in Patients with Idiopathic Pulmonary Fibrosis. In: Wu M, editor. *PLoS One* 2016;11:e0151425.
- 5) Hyltdgaard C, Hilberg O, Bendstrup E. How does comorbidity influence survival in idiopathic pulmonary fibrosis? *Respir Med* 2014;108:647–53.
- 6) Collard HR, Ryerson CJ, Corte TJ, Jenkins G, Kondoh Y, Lederer DJ, Lee JS, Maher TM, Wells AU, Antoniou KM, Behr J, Brown KK, Cottin V, Flaherty KR, Fukuoka J, Hansell DM, Johkoh T, Kaminski N, Kim DS, Kolb M, Lynch DA, Myers JL, Raghu G, Richeldi L, Taniguchi H, Martinez FJ. Acute Exacerbation of Idiopathic Pulmonary Fibrosis. An

International Working Group Report. Am J Respir Crit Care Med. 2016 Aug

1;194(3):265-75. doi: 10.1164/rccm.201604-0801CI.

- 7) Kreuter M, Polke M, Walsh SLF, Krisam J, Collard HR, Chaudhuri N, Avdeev S, Behr J, Calligaro G, Corte T, Flaherty K, Funke-Chambour M, Kolb M, Kondoh Y, Maher TM, Molina Molina M, Morais A, Moor CC, Morisset J, Pereira C, Quadrelli S, Selman M, Tzouvelekis A, Valenzuela C, Vancheri C, Vicens-Zygmunt V, Wälscher J, Wuyts W, Wijzenbeek M, Cottin V, Bendstrup E. Acute exacerbation of idiopathic pulmonary fibrosis: international survey and call for harmonisation. Eur Respir J. 2020 Apr 3;55(4):1901760. doi: 10.1183/13993003.01760-2019.
- 8) Rodriguez-Morales AJ, Cardona-Ospina JA, Gutiérrez-Ocampo E, Villamizar-Peña R, Holguin-Rivera Y, Escalera-Antezana JP, Alvarado-Arnez LE, Bonilla-Aldana DK, Franco-Paredes C, Henao-Martinez AF, Paniz-Mondolfi A, Lagos-Grisales GJ, Ramírez-Vallejo E, Suárez JA, Zambrano LI, Villamil-Gómez WE, Balbin-Ramon GJ, Rabaan AA, Harapan H, Dhama K, Nishiura H, Kataoka H, Ahmad T, Sah R; Latin American Network of Coronavirus Disease 2019-COVID-19 Research (LANCOVID-19). Electronic address: <https://www.lancovid.org>. Clinical, laboratory and imaging features of COVID-19: A systematic review and meta-analysis. Travel Med Infect Dis. 2020 Mar-Apr;34:101623. doi:10.1016/j.tmaid.2020.101623.
- 9) Docherty AB, Harrison EM, Green CA, Hardwick HE, Pius R, Norman L, Holden KA, Read JM, Dondelinger F, Carson G, Merson L, Lee J, Plotkin D, Sigfrid L, Halpin S, Jackson C, Gamble C, Horby PW, Nguyen-Van-Tam JS, Ho A, Russell CD, Dunning J, Openshaw PJ, Baillie JK, Semple MG; ISARIC4C investigators. Features of 20 133 UK patients in hospital with covid-19 using the ISARIC WHO Clinical Characterisation

Protocol: prospective observational cohort study. *BMJ*. 2020 May 22;369:m1985.

doi: 10.1136/bmj.m1985.

- 10) Zhou F, Yu T, Du R, Fan G, Liu Y, Liu Z, Xiang J, Wang Y, Song B, Gu X, Guan L, Wei Y, Li H, Wu X, Xu J, Tu S, Zhang Y, Chen H, Cao B. Clinical course and risk factors for mortality of adult inpatients with COVID-19 in Wuhan, China: a retrospective cohort study. *Lancet*. 2020 Mar 28;395(10229):1054-1062. doi: 10.1016/S0140-6736(20)30566-3.
- 11) Ho DE, Imai K, King G, Stuart EA. Matching as Nonparametric Preprocessing for Reducing Model Dependence in Parametric Causal Inference *Political Analysis* (2007) 15:199–236 doi:10.1093/pan/impl013
- 12) Banerjee A, Pasea L, Harris S, Gonzalez-Izquierdo A, Torralbo A, Shallcross L, Noursadeghi M, Pillay D, Sebire N, Holmes C, Pagel C, Wong WK, Langenberg C, Williams B, Denaxas S, Hemingway H. Estimating excess 1-year mortality associated with the COVID-19 pandemic according to underlying conditions and age: a population-based cohort study. *Lancet*. 2020 May 30;395(10238):1715-1725. doi: 10.1016/S0140-6736(20)30854-0. Epub 2020 May 12.
- 13) Ushiki A, Yamazaki Y, Hama M, Yasuo M, Hanaoka M, Kubo K. Viral infections in patients with an acute exacerbation of idiopathic interstitial pneumonia. *Respir Investig*. 2014 Jan;52(1):65-70. doi: 10.1016/j.resinv.2013.07.005. Epub 2013 Aug 12.
- 14) Saraya T, Kimura H, Kurai D, Tamura M, Ogawa Y, Mikura S, Sada M, Oda M, Watanabe T, Ohkuma K, Inoue M, Honda K, Watanabe M, Yokoyama T, Fujiwara M, Ishii H, Takizawa H. Clinical significance of respiratory virus detection in patients with acute exacerbation of interstitial lung diseases. *Respir Med*. 2018 Mar;136:88-92. doi: 10.1016/j.rmed.2018.02.003. Epub 2018 Feb 8.

- 15) Weng D, Chen XQ, Qiu H, Zhang Y, Li QH, Zhao MM, Wu Q, Chen T, Hu Y, Wang LS, Wei YR, Du YK, Chen SS, Zhou Y, Zhang F, Shen L, Su YL, Kolb M, Li HP. The Role of Infection in Acute Exacerbation of Idiopathic Pulmonary Fibrosis. *Mediators Inflamm.* 2019 Jan 3;2019:5160694. doi: 10.1155/2019/5160694. eCollection 2019.
- 16) Sheng G, Chen P, Wei Y, Yue H, Chu J, Zhao J, Wang Y, Zhang W, Zhang HL. Viral Infection Increases the Risk of Idiopathic Pulmonary Fibrosis: A Meta-Analysis. *Chest.* 2020 May;157(5):1175-1187. doi: 10.1016/j.chest.2019.10.032. Epub 2019 Nov 12.
- 17) Qiu M, Chen Y, Ye Q. Risk factors for acute exacerbation of idiopathic pulmonary fibrosis: A systematic review and meta-analysis. *Clin Respir J.* 2018 Mar;12(3):1084-1092. doi: 10.1111/crj.12631. Epub 2017 Apr 12.
- 18) Enomoto N, Naoi H, Aono Y, Katsumata M, Horiike Y, Yasui H, Karayama M, Hozumi H, Suzuki Y, Furuhashi K, Fujisawa T, Inui N, Nakamura Y, Suda T. Acute exacerbation of unclassifiable idiopathic interstitial pneumonia: comparison with idiopathic pulmonary fibrosis. *Ther Adv Respir Dis.* 2020 Jan-Dec;14:1753466620935774. doi: 10.1177/1753466620935774.
- 19) Taya T, Chiba H, Yamada G, Takahashi M, Ikeda K, Mori Y, Otsuka M, Takahashi H. Risk factors for acute exacerbation of idiopathic interstitial pneumonia in patients undergoing lung cancer treatment. *Jpn J Clin Oncol.* 2019 Dec 27;49(12):1126-1133. doi: 10.1093/jjco/hyz115.
- 20) Enomoto N, Oyama Y, Enomoto Y, Mikamo M, Karayama M, Hozumi H, Suzuki Y, Kono M, Furuhashi K, Fujisawa T, Inui N, Nakamura Y, Suda T. Prognostic evaluation of serum ferritin in acute exacerbation of idiopathic pulmonary fibrosis. *Clin Respir J.* 2018 Aug;12(8):2378-2389. doi: 10.1111/crj.12918.

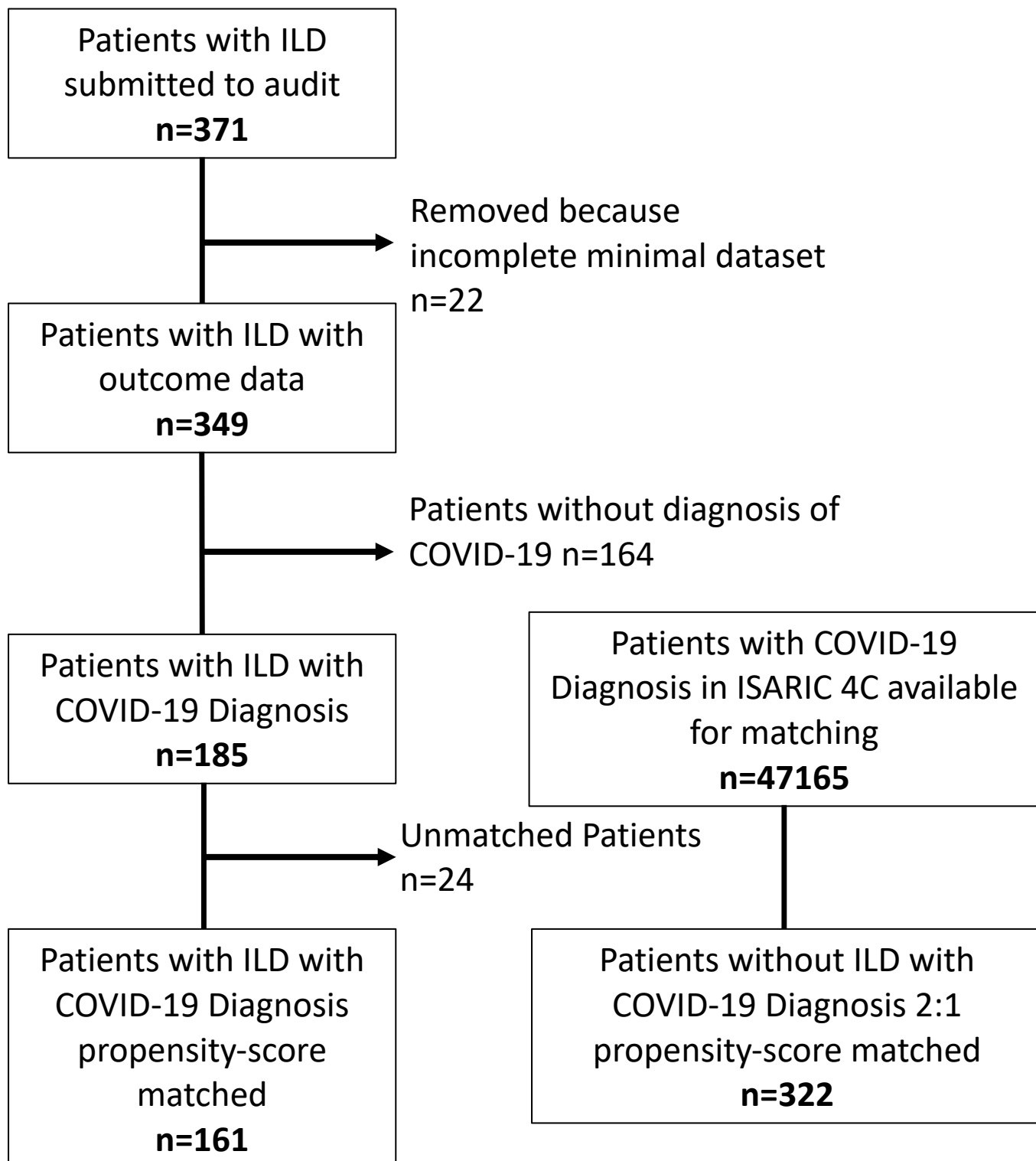
- 21) Bahmer T, Kirsten AM, Waschki B, Rabe KF, Magnussen H, Kirsten D, Marco Gramm M, Hummler S, Brunnemer E, Kreuter M, Watz H. Prognosis and longitudinal changes of physical activity in idiopathic pulmonary fibrosis. *BMC Pulm Med*. 2017; 17: 104. doi: 10.1186/s12890-017-0444-0
- 22) Papaioannou O, Karampitsakos T, Barbayianni I, Chrysikos S, Xylourgidis N, Tzilas V, Bouros D, Aidinis V, Tzouvelekis A. Metabolic Disorders in Chronic Lung Diseases. *Front Med (Lausanne)*. 2018 Jan 18;4:246. doi: 10.3389/fmed.2017.00246. eCollection 2017.
- 23) Raghu G, Collard HR, Egan JJ, Martinez FJ, Behr J, Brown KK, Colby TV, Cordier JF, Flaherty KR, Lasky JA, Lynch DA, Ryu JH, Swigris JJ, Wells AU, Ancochea J, Bouros D, Carvalho C, Costabel U, Ebina M, Hansell DM, Johkoh T, Kim DS, King TE Jr, Kondoh Y, Myers J, Müller NL, Nicholson AG, Richeldi L, Selman M, Dudden RF, Griss BS, Protzko SL, Schönemann HJ; ATS/ERS/JRS/ALAT Committee on Idiopathic Pulmonary Fibrosis. An official ATS/ERS/JRS/ALAT statement: idiopathic pulmonary fibrosis: evidence-based guidelines for diagnosis and management. *Am J Respir Crit Care Med*. 2011 Mar 15;183(6):788-824. doi: 10.1164/rccm.2009-040GL.
- 24) Cummings MJ, Baldwin MR, Abrams D, Jacobson SD, Meyer BJ, Balough EM, Aaron JG, Claassen J, Rabbani LE, Hastie J, Hochman BR, Salazar-Schicchi J, Yip NH, Brodie D, O'Donnell MR. Epidemiology, clinical course, and outcomes of critically ill adults with COVID-19 in New York City: a prospective cohort study. *Lancet*. 2020 Jun 6;395(10239):1763-1770. doi: 10.1016/S0140-6736(20)31189-2. Epub 2020 May 19.
- 25) George PM, Wells AU, Jenkins RG. Pulmonary Fibrosis and COVID-19: The Potential Role for Antifibrotic Therapy *Lancet Respir Med* 2020 May 15;S2213-2600(20)30225-3. doi: 10.1016/S2213-2600(20)30225-3. Online ahead of print.

- 26) Peter Horby, Wei Shen Lim, Jonathan Emberson, Marion Mafham, Jennifer Bell, Louise Linsell, Natalie Staplin, Christopher Brightling, Andrew Ustianowski, Einas Elmahi, Benjamin Prudon, Christopher Green, Timothy Felton, David Chadwick, Kanchan Rege, Christopher Fegan, Lucy C Chappell, Saul N Faust, Thomas Jaki, Katie Jeffery, Alan Montgomery, V Kathryn Rowan, Edmund Juszczak, J Kenneth Baillie, Richard Haynes, Martin J Landray, RECOVERY Collaborative Group. Effect of Dexamethasone in Hospitalized Patients with COVID-19: Preliminary Report MedRxiv doi: [10.1101/2020.06.22.20137273](https://doi.org/10.1101/2020.06.22.20137273).
- 27) Clausen ES, Zaffiri L. Infection prophylaxis and management of viral infection. Ann Transl Med. 2020 Mar;8(6):415. doi: [10.21037/atm.2019.11.85](https://doi.org/10.21037/atm.2019.11.85).

## Figure Legends

**Figure 1** CONSORT Diagram showing patients recruited and flow to matching.

Figure 1



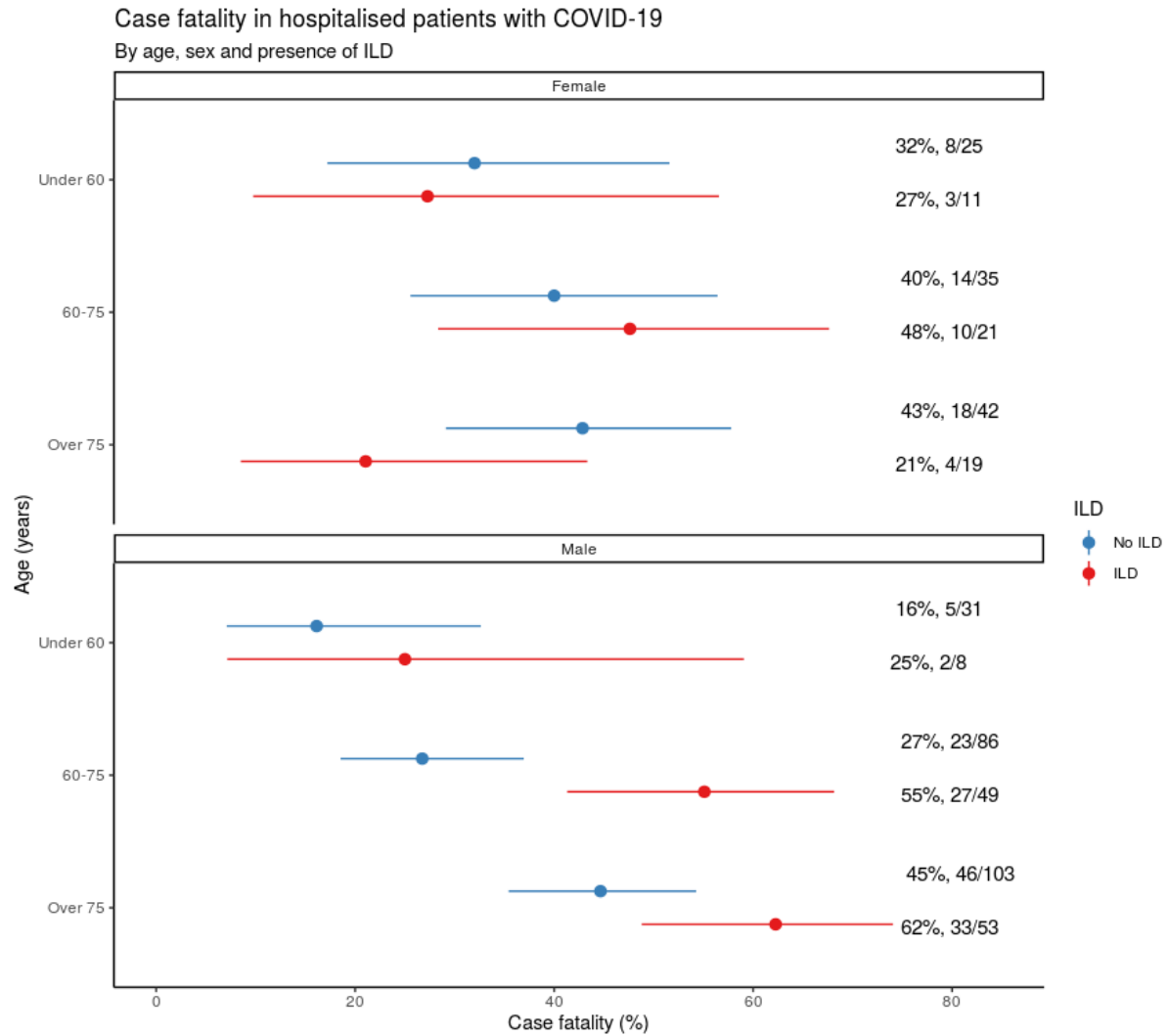


**Figure 2 A)** Case Fatality Rates with 95% confidence intervals for female ILD patients

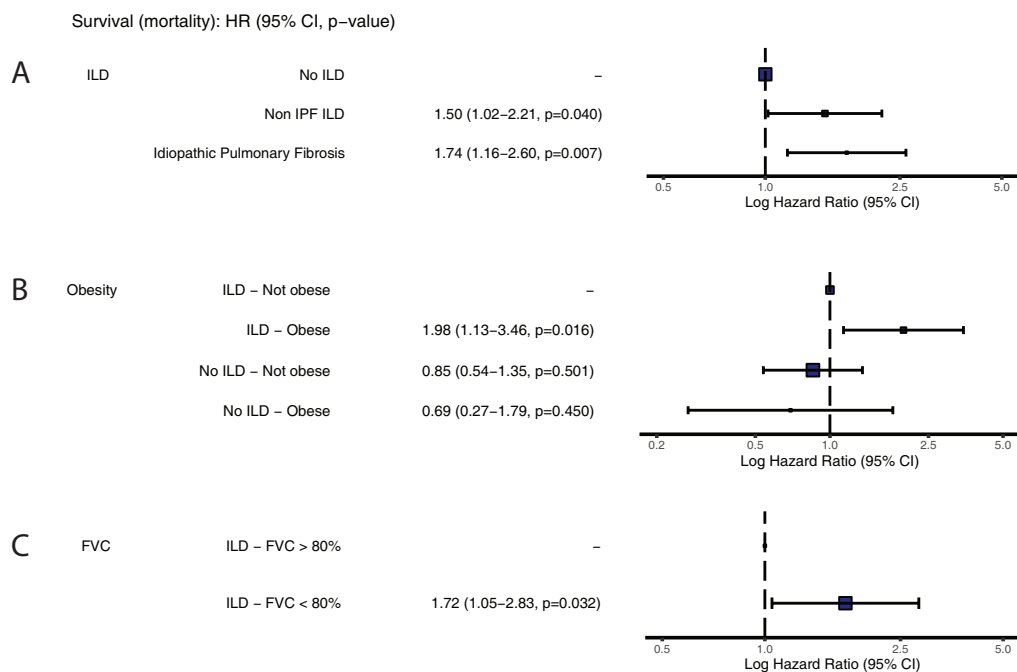
hospitalised with COVID-19 stratified by age compared with those without ILD. B) Case

Fatality Rates with 95% confidence intervals for male ILD patients hospitalised with COVID-

19 stratified by age compared with those without ILD.



**Figure 3** A) Effect of ILD on mortality following COVID-19 (Propensity Matched), B) effect of obesity and ILD (Propensity Matched) C) and effect of FVC on outcome in ILD patients only.



**Table 1 – Patient Characteristics by ILD**

	Total N	Missing N	levels	No ILD	ILD	p
Total N (%)				322 (66.7)	161 (33.3)	
Age (years)	483	0	Mean (SD)	72.6 (13.4)	73.2 (11.5)	0.639*
Age categories	483	0	<50	10 (3.1)	5 (3.1)	1.000
			50-69	112 (34.8)	56 (34.8)	
			70-79	96 (29.8)	48 (29.8)	
			80+	104 (32.3)	52 (32.3)	
Sex at Birth	483	0	Female	102 (31.7)	51 (31.7)	1.000
			Male	220 (68.3)	110 (68.3)	
ILD	483	0	No ILD	322 (100.0)	0 (0.0)	<0.001
			Chronic Hypersensitivity Pneumonitis	0 (0.0)	14 (8.7)	
			Connective Tissue Disease related ILD	0 (0.0)	13 (8.1)	
			Idiopathic Pulmonary Fibrosis	0 (0.0)	68 (42.2)	
			Other	0 (0.0)	47 (29.2)	
			Rheumatoid related ILD	0 (0.0)	10 (6.2)	
			Sarcoidosis	0 (0.0)	9 (5.6)	
Chronic Cardiac Disease	483	0	No	230 (71.4)	115 (71.4)	1.000
			Yes	92 (28.6)	46 (28.6)	
Diabetes	483	0	No	224 (69.6)	112 (69.6)	1.000
			Yes	98 (30.4)	49 (30.4)	
Malignant neoplasm	483	0	No	266 (82.6)	133 (82.6)	1.000
			Yes	56 (17.4)	28 (17.4)	
Obesity	419	64	No	267 (82.9)	84 (52.2)	<0.001
			Yes	23 (7.1)	45 (28.0)	
			(Missing)	32 (9.9)	32 (19.9)	
Hypertension	483	0	No	174 (54.0)	87 (54.0)	1.000
			Yes	148 (46.0)	74 (46.0)	
Chronic kidney disease	483	0	No	306 (95.0)	153 (95.0)	1.000
			Yes	16 (5.0)	8 (5.0)	
Pirfenidone	483	0	No	322 (100.0)	154 (95.7)	0.001
			Yes	0 (0.0)	7 (4.3)	
Nintedanib	483	0	No	322 (100.0)	148 (91.9)	<0.001
			Yes	0 (0.0)	13 (8.1)	
Corticosteroids	483	0	No	294 (91.3)	116 (72.0)	<0.001
			Yes	28 (8.7)	45 (28.0)	

ILD- Interstitial Lung Disease. SD – Standard Deviation. All test Chi-square unless indicated by \* where Welch's two sample t-test used.

**Table 2: Outcomes by ILD**

	Total N	Missing N	levels	No ILD	ILD	p
Died	486	0	Alive	208 (64.6)	82 (50.9)	0.013
			Died	114 (35.4)	79 (49.1)	
Respiratory Support	486	0	Unenhanced respiratory support*	254 (78.9)	136 (84.5)	0.288
			Enhanced Respiratory Support	39 (12.1)	20 (12.4)	
			Ventilation	29 (9.0)	6 (3.7)	
Length of stay for those alive	290	196	Median (IQR)	9.0 (11.0)	10.0 (8.0)	0.725**

IQR – Interquartile range. All test Chi-square unless indicated by \*Standard flow-rate Oxygen supplementation not considered ‘enhanced’ respiratory support, CPAP and High Flow O<sub>2</sub> considered enhanced respiratory support. \*\*where Kruskal Wallis used.

**Table 3 – Lung function in ILD group by death**

label	Total N	Missing N	levels	Alive	Died	p
Forced Vital Capacity	147	37	Mean (SD)	2.7 (1.0)	2.6 (0.9)	0.372*
Forced Vital Capacity, percentage of predicted	151	33	Mean (SD)	82.2 (23.0)	76.8 (21.0)	0.135*
Forced Vital Capacity, at 80% of predicted	151	33	FVC < 80%	35 (42.7)	42 (60.9)	0.039
			FVC > 80%	47 (57.3)	27 (39.1)	
Forced Vital Capacity, percentage of predicted	151	33	<50%	7 (6.9)	4 (4.8)	0.070
			50 to 80%	28 (27.7)	38 (45.8)	
			80 to 100%	33 (32.7)	17 (20.5)	
			Over 100%	14 (13.9)	10 (12.0)	
			(Missing)	19 (18.8)	14 (16.9)	
Diffusing capacity for carbon monoxide	81	103	Mean (SD)	5.2 (3.4)	4.2 (1.9)	0.093*
Diffusing capacity for carbon monoxide, percentage of predicted	122	62	Mean (SD)	56.4 (19.4)	49.6 (21.6)	0.072*

SD – Standard Deviation. All tests Welch’s two sample t-test, unless indicated by \* where Kruskal Wallis used.

**Table 4:** Use of Ventilation in patients with ILD by outcome

	Total N	Missing N	levels	Alive	Died	p
Respiratory Support	161	0	Unenhanced respiratory support*	76 (92.7)	59 (74.7)	0.015
			Enhanced Respiratory Support	5 (6.0)	15 (23)	0.005
			Ventilation	1 (1.2)	5 (3.8)	0.190

All test Chi-square. \*Standard flow-rate Oxygen supplementation not considered 'enhanced' respiratory support, CPAP and High Flow O<sub>2</sub> considered enhanced respiratory support. Note a further 10 patients with ILD were ventilated but not included in the matching, of those 6 survived.

**Table 5:** Drugs received by patients with ILD

	levels	Alive	Died
Received Immunosuppressants/ Anti-fibrotics	No	53 (64.6)	53 (67.1)
	Yes	29 (34.9)	26 (32.9)
Methotrexate/ Azathioprine	No	80 (96.4)	77 (98.7)
	Yes	3 (3.6)	2 (1.3)
Nintedanib	No	74 (89.2)	75 (94.9)
	Yes	9 (10.8)	4 (5.1)
Pirfenidone*	No	82 (98.8)	73 (92.4)
	Yes	1 (1.2)	6 (7.6)
Mycophenolate	No	73 (88.0)	72 (91.1)
	Yes	10 (12.0)	7 (8.9)
Corticosteroid	No	60 (72.3)	57 (72.2)
	Yes	23 (27.7)	22 (27.8)

\*2 further patients received pirfenidone and survived but were not included in matched cohort.

## **Funding**

RGJ is supported by an NIHR Research Professor Award (RP-2017-08-ST2-014). LPH is supported by the NIHR Oxford Biomedical Research Centre. This work is supported by grants from: the National Institute for Health Research [award CO-CIN-01], the Medical Research Council [grant MC\_PC\_19059] and by the National Institute for Health Research Health Protection Research Unit (NIHR HPRU) in Emerging and Zoonotic Infections at University of Liverpool in partnership with Public Health England (PHE), in collaboration with Liverpool School of Tropical Medicine and the University of Oxford [NIHR award 200907], Wellcome Trust and Department for International Development [215091/Z/18/Z], and the Bill and Melinda Gates Foundation [OPP1209135], and Liverpool Experimental Cancer Medicine Centre for providing infrastructure support for this research (Grant Reference: C18616/A25153). The views expressed are those of the authors and not necessarily those of the DHSC, DID, NIHR, MRC, Wellcome Trust or PHE.

## **ISARIC 4C Investigators**

Consortium Lead Investigator J Kenneth Baillie, Chief Investigator Malcolm G Semple  
Co-Lead Investigator Peter JM Openshaw. ISARIC Clinical Coordinator Gail Carson.  
Co-Investigators: Beatrice Alex, Benjamin Bach, Wendy S Barclay, Debby Bogaert, Meera Chand, Graham S Cooke, Annemarie B Docherty, Jake Dunning, Ana da Silva Filipe, Tom Fletcher, Christopher A Green, Ewen M Harrison, Julian A Hiscox, Antonia Ying Wai Ho, Peter W Horby, Samreen Ijaz, Saye Khoo, Paul Klenerman, Andrew Law, Wei Shen Lim, Alexander, J Mentzer, Laura Merson, Alison M Meynert, Mahdad Noursadeghi, Shona C Moore, Massimo Palmarini, William A Paxton, Georgios Pollakis, Nicholas Price, Andrew Rambaut, David L Robertson, Clark D Russell, Vanessa Sancho-Shimizu, Janet T Scott, Louise Sigfrid,

Tom Solomon, Shiranee Sriskandan, David Stuart, Charlotte Summers, Richard S Tedder, Emma C Thomson, Ryan S Thwaites, Lance CW Turtle, Maria Zambon. Project Managers Hayley Hardwick, Chloe Donohue, Jane Ewins, Wilna Oosthuyzen, Fiona Griffiths. Data Analysts: Lisa Norman, Riinu Pius, Tom M Drake, Cameron J Fairfield, Stephen Knight, Kenneth A Mclean, Derek Murphy, Catherine A Shaw. Data and Information System Manager: Jo Dalton, Michelle Girvan, Egle Saviciute, Stephanie Roberts Janet Harrison, Laura Marsh, Marie Connor. Data integration and presentation: Gary Leeming, Andrew Law, Ross Hendry. Material Management: William Greenhalf, Victoria Shaw, Sarah McDonald. Local Principal Investigators: Kayode Adeniji, Daniel Agranoff, Ken Agwuh, Dhiraj Ail, Ana Alegria, Brian Angus, Abdul Ashish, Dougal Atkinson, Shahedal Bari, Gavin Barlow, Stella Barnass, Nicholas Barrett, Christopher Bassford, David Baxter, Michael Beadsworth, Jolanta Bernatoniene, John Berridge , Nicola Best , Pieter Bothma, David Brealey, Robin Brittain-Long, Naomi Bulteel, Tom Burden , Andrew Burtenshaw, Vikki Caruth, David Chadwick, Duncan Chambler, Nigel Chee, Jenny Child, Srikanth Chukkambotla, Tom Clark, Paul Collini, Catherine Cosgrove, Jason Cupitt, Maria-Teresa Cutino-Moguel, Paul Dark, Chris Dawson, Samir Dervisevic, Phil Donnison, Sam Douthwaite, Ingrid DuRand, Ahilanadan Dushianthan, Tristan Dyer, Cariad Evans , Chi Eziefula, Chrisopher Fegan, Adam Finn, Duncan Fullerton, Sanjeev Garg, Sanjeev Garg, Atul Garg, Jo Godden, Arthur Goldsmith, Clive Graham, Elaine Hardy, Stuart Hartshorn, Daniel Harvey, Peter Havalda, Daniel B Hawcutt, Maria Hobrok, Luke Hodgson, Anita Holme, Anil Hormis, Michael Jacobs, Susan Jain, Paul Jennings, Agilan Kaliappan, Vidya Kasipandian, Stephen Kegg, Michael Kelsey, Jason Kendall, Caroline Kerrison, Ian Kerslake, Oliver Koch, Gouri Koduri, George Koshy , Shondipon Laha, Susan Larkin, Tamas Leiner, Patrick Lillie, James Limb, Vanessa Linnett, Jeff Little, Michael MacMahon, Emily MacNaughton, Ravish Mankregod, Huw Masson , Elijah Matovu,



Katherine McCullough, Ruth McEwen , Manjula Meda, Gary Mills , Jane Minton, Mariyam Mirfenderesky, Kavya Mohandas, Quen Mok, James Moon, Elinoor Moore, Patrick Morgan, Craig Morris, Katherine Mortimore, Samuel Moses, Mbiye Mpenge, Rohinton Mulla, Michael Murphy, Megan Nagel, Thapas Nagarajan, Mark Nelson, Igor Otahal, Mark Pais, Selva Panchatsharam, Hassan Paraiso, Brij Patel, Justin Pepperell, Mark Peters, Mandeep Phull , Stefania Pintus, Jagtur Singh Pooni, Frank Post, David Price, Rachel Prout, Nikolas Rae, Henrik Reschreiter, Tim Reynolds, Neil Richardson, Mark Roberts, Devender Roberts, Alistair Rose, Guy Rousseau, Brendan Ryan, Taranprit Saluja, Aarti Shah, Prad Shanmuga, Anil Sharma, Anna Shawcross, Jeremy Sizer, Richard Smith, Catherine Snelson, Nick Spittle, Nikki Staines , Tom Stambach, Richard Stewart, Pradeep Subudhi, Tamas Szakmany, Kate Tatham, Jo Thomas, Chris Thompson, Robert Thompson, Ascanio Tridente, Darell Tupper - Carey, Mary Twagira, Andrew Ustianowski, Nick Vallotton, Lisa Vincent-Smith, Shico Visuvanathan , Alan Vuylsteke, Sam Waddy, Rachel Wake, Andrew Walden, Ingeborg Welters, Tony Whitehouse, Paul Whittaker, Ashley Whittington, Meme Wijesinghe, Martin Williams, Lawrence Wilson, Sarah Wilson, Stephen Winchester, Martin Wiselka, Adam Wolverson, Daniel G Wooton, Andrew Workman, Bryan Yates, Peter Young.

### **Acknowledgements**

This work uses data provided by patients and collected by the NHS as part of their care and support #DataSavesLives. We are extremely grateful to the 2,648 frontline NHS clinical and research staff and volunteer medical students, who collected this data in challenging circumstances; and the generosity of the participants and their families for their individual contributions in these difficult times. We also acknowledge the support of Jeremy J Farrar, Nahoko Shindo, Devika Dixit, Nipunie Rajapakse, Piero Olliaro, Lyndsey Castle, Martha

Buckley, Debbie Malden, Katherine Newell, Kwame O'Neill, Emmanuelle Denis, Claire Petersen, Scott Mullaney, Sue MacFarlane, Chris Jones, Nicole Maziere, Katie Bullock, Emily Cass, William Reynolds, Milton Ashworth, Ben Catterall, Louise Cooper, Terry Foster, Paul Matthew Ridley, Anthony Evans, Catherine Hartley, Chris Dunn, D. Sales, Diane Latawiec, Erwan Trochu, Eve Wilcock, Innocent Gerald Asimwe, Isabel Garcia-Dorival, J. Eunice Zhang, Jack Pilgrim, Jane A Armstrong, Jordan J. Clark, Jordan Thomas, Katharine King, Katie Alexandra Ahmed, Krishanthi S Subramaniam , Lauren Lett, Laurence McEvoy, Libby van Tonder, Lucia Alicia Livoti, Nahida S Miah, Rebecca K. Shears, Rebecca Louise Jensen, Rebekah Penrice-Randal, Robyn Kiy, Samantha Leanne Barlow, Shadia Khandaker, Soeren Metelmann, Tessa Prince, Trevor R Jones, Benjamin Brennan, Agnieska Szemiel, Siddharth Bakshi, Daniella Lefteri, Maria Mancini, Julien Martinez, Angela Elliott, Joyce Mitchell, John McLauchlan, Aislynn Taggart, Oslem Dincarslan, Annette Lake, Claire Petersen, Scott Mullaney and Graham Cooke. We would like to thank Lise-Ann Grundy, Mark Major and Amanda Bell who collected data.

## Outcome of COVID-19 in patients hospitalised with Interstitial Lung Disease: An international multicentre study. Supplementary Material.

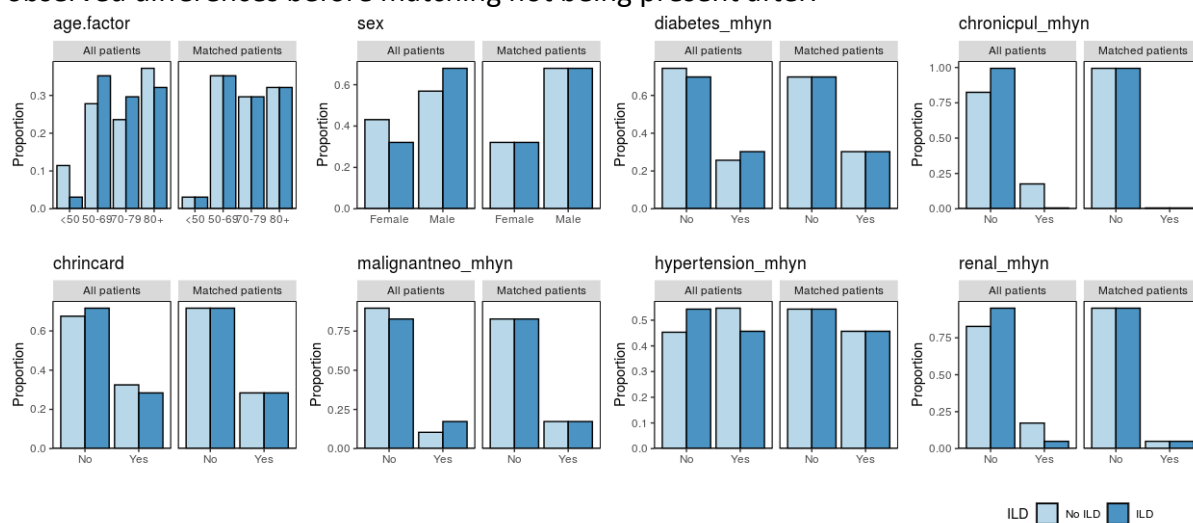
### Supplementary Table 1

label	'Other' ILD diagnoses	n
Other ILD Details	Age-related ILD/presbyotic lung	<3
	ANCA vasculitis	<3
	asbestosis	5
	Autoimmune Pneumonitis	5
	Chronic eosinophilic pneumonia	<3
	Combined Emphysema and Pulmonary Fibrosis	7
	Desquamative Intestinal Pneumonia	<3
	Non-Specific Interstitial Pneumonia	10
	Organising Pneumonia	<3
	PPFE	<3
	smoking related ILD	<3
	Unclassifiable ILD	11

### Supplemental Figure

#### Figure S1 Balance Plots

Distribution of differences across ILD groups by matching variable. Propensity score matching normalised standardised mean differences across the treatment groups, with observed differences before matching not being present after.



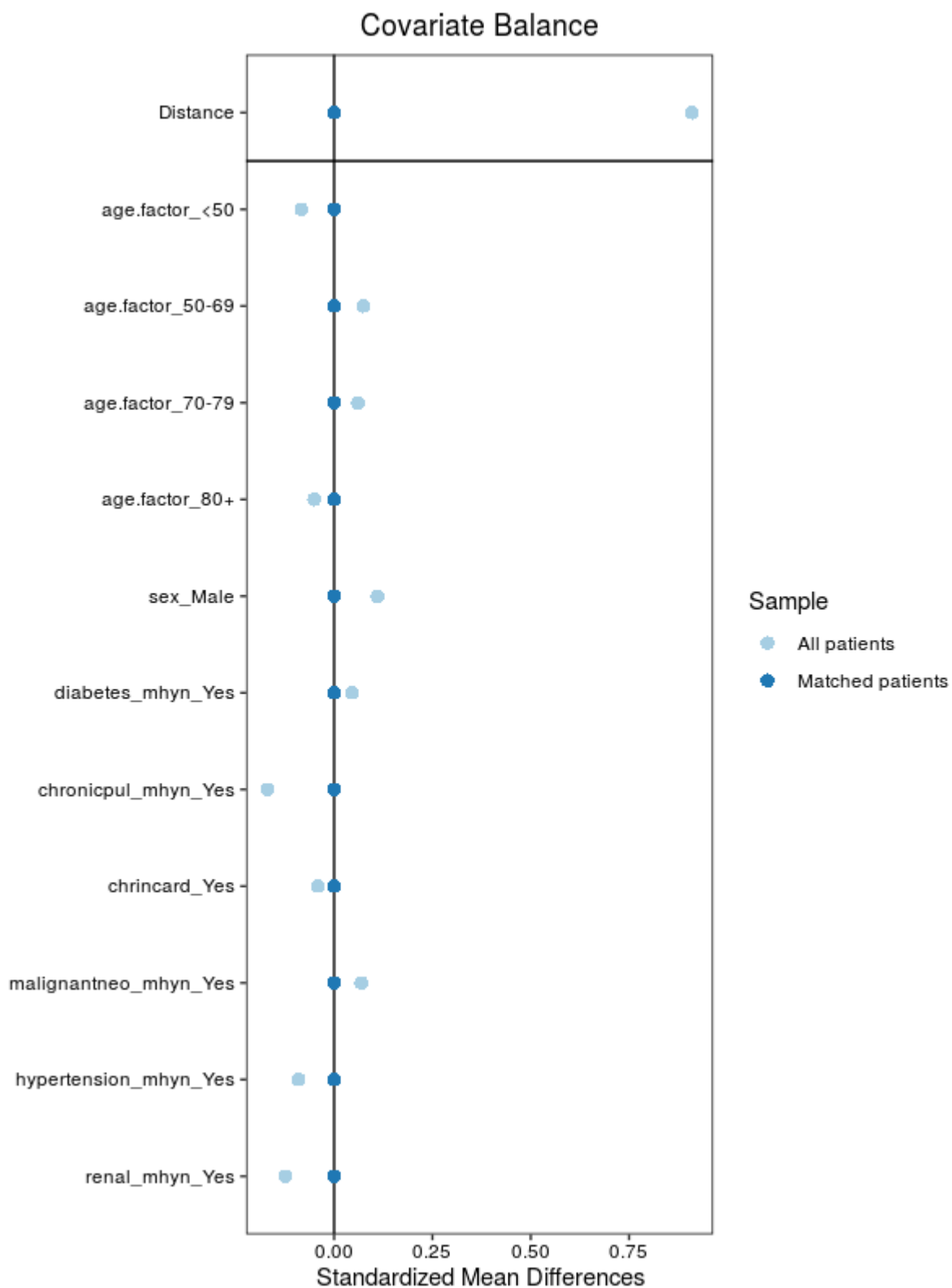


Figure S2 Impact of sex, and co-morbidity on outcomes of COVID-19 in ILD

Survival: HR (95% CI, p-value)

Age (years)	-	1.01 (0.99-1.03, p=0.547)
Sex at Birth	Female	-
	Male	2.02 (1.16-3.50, p=0.013)
Chronic Cardiac Disease	No	-
	Yes	0.98 (0.60-1.60, p=0.951)
Diabetes	No	-
	Yes	1.25 (0.77-2.01, p=0.369)
Hypertension	No	-
	Yes	0.95 (0.60-1.51, p=0.831)

