

1 **Reconciling model predictions with low reported cases of COVID-19 in Sub-Saharan**
2 **Africa: Insights from Madagascar**

3 **Authors:** Michelle V. Evans¹, Andres Garchitorena^{2,3}, Rado J.L. Rakotonanahary³, John M.
4 Drake¹, Benjamin Andriamihaja^{3,4}, Elinambinina Rajaonarifara^{2,3,5}, Calistus N. Ngonghala⁶,
5 Benjamin Roche^{2,7,8}, Matthew H. Bonds^{3,9}, Julio Rakotonirina¹⁰

6 **Affiliations:**

7 ¹ University of Georgia, Athens, GA USA

8 ² UMR MIVEGEC, Université Montpellier, CNRS, IRD, Montpellier, France

9 ³ PIVOT, Ranomafana, Madagascar

10 ⁴ Madagascar Institut pour la Conservation des Ecosystèmes Tropicaux, Antananarivo,
11 Madagascar

12 ⁵ Sorbonne Université, Paris, France

13 ⁶ University of Florida, Gainesville, FL, USA

14 ⁷ IRD, Sorbonne Université, UMMISCO, F-93143, Bondy, France

15 ⁸ Universidad Nacional Autónoma de México (UNAM), Ciudad de México, México

16 ⁹ Harvard Medical School, Boston, MA, USA

17 ¹⁰ University of Antananarivo, Antananarivo, Madagascar

18

19 **Abstract:**

20 The COVID-19 pandemic has wreaked havoc globally, and there has been a particular concern
21 for sub-Saharan Africa (SSA), where models suggest that the majority of the population will
22 become infected. Conventional wisdom suggests that the continent will bear a higher burden of
23 COVID-19 for the same reasons it suffers high burdens of other infectious diseases: ecology,
24 socio-economic conditions, lack of water and sanitation infrastructure, and weak health systems.
25 However, so far SSA has reported lower incidence and fatalities compared to the predictions of
26 standard models and the experience of other regions of the world. There are three leading
27 explanations, each with very different implications for the final epidemic burden: (1) low case
28 detection, (2) differences in COVID-19 epidemiology (e.g. low R_0), and (3) policy interventions.
29 The low number of cases to date have led some SSA governments to relax these policy
30 interventions. Will this result in a resurgence of cases? To understand how to interpret the lower-
31 than-expected COVID-19 case data in Madagascar, we use a simple age-structured model to
32 explore each of these explanations and predict the epidemic impact associated with them. We
33 show that the current incidence of COVID-19 cases can be explained by any combination of the
34 late introduction of first imported cases, early implementation of non-pharmaceutical interventions
35 (NPIs), and low case detection rates. This analysis reinforces that Madagascar, along with other
36 countries in SSA, remains at risk of an impending health crisis. If NPIs remain enforced, up to
37 50,000 lives may be saved. Even with NPIs, without vaccines and new therapies, COVID-19 could
38 infect up to 30% of the population, making it the largest public health threat in Madagascar until
39 early 2021, hence the importance of conducting clinical trials and continually improving access to
40 healthcare.

41

42 **Résumé:**

43 La pandémie de COVID-19 a eu des conséquences néfastes partout dans le monde, et il y a une
44 préoccupation particulière pour l'Afrique subsaharienne (ASS), où des modèles suggèrent que la
45 majorité de la population sera infectée. Il est craint que le continent supportera un fardeau plus
46 élevée de COVID-19 pour les mêmes raisons qu'il souffre d'avantage d'autres maladies
47 infectieuses: écologie, conditions socio-économiques, manque d'infrastructures d'eau et
48 d'assainissement, et faiblesse des systèmes de santé. Cependant, jusqu'à présent, l'ASS a
49 rapporté une incidence et une mortalité bien inférieure à celle des prévisions des modèles pour
50 cette région, ainsi qu'au nombre observé dans d'autres régions du monde. Il y a trois explications
51 principales pour ce phénomène, chacune ayant des implications très différentes pour le fardeau
52 épidémique final: (1) détection faible des cas, (2) différences dans l'épidémiologie COVID-19 (par

53 exemple faible R_0), et (3) interventions et politiques mises en place. Le faible nombre de cas à
54 ce jour a conduit certains gouvernements d'ASS à assouplir ces interventions. Cela entraînera-t-
55 il une résurgence de cas? Pour comprendre comment interpréter le fait que les cas COVID-19
56 rapportés sont plus faibles que prévu à Madagascar, nous utilisons un modèle de transmission
57 structuré par groupe d'âge pour explorer chacune de ces explications et prédire l'impact
58 épidémique qui leur est associé. Nous montrons que l'incidence actuelle des cas de COVID-19
59 peut s'expliquer par l'effet cumulé de l'introduction tardive des premiers cas importés, la mise en
60 œuvre rapide d'interventions non pharmaceutiques (INP) et de faibles taux de détection des cas.
61 Cette analyse renforce le fait que Madagascar, ainsi que d'autres pays d'Afrique subsaharienne,
62 reste à risque d'une crise sanitaire imminente. Si les INP restent appliqués, jusqu'à 50 000 vies
63 pourraient être sauvées. Même avec des INP, tant qu'il n'y aura pas des vaccins ni des nouvelles
64 thérapies efficaces, COVID-19 pourrait infecter jusqu'à 30% de la population, ce qui constituerait
65 la plus grande menace pour la santé publique à Madagascar jusqu'au début de 2021, d'où
66 l'importance de la réalisation des essais cliniques et de l'amélioration continue de l'accès aux
67 soins.

68

69

70 **Summary Box:**

- 71 ● The lower-than-expected number of reported cases of COVID-19 in Madagascar can be
72 explained by a combination of the relatively late introduction of the disease, low detection
73 rates, and low transmission rates due to the early and effective implementation of non-
74 pharmaceutical interventions that reduced contact rates.
- 75 ● COVID-19 is predicted to be the largest public health problem in Madagascar in 2020, but
76 non-pharmaceutical interventions at an effectiveness similar to those seen in the first few
77 months could save up to 50,000 lives.
- 78 ● Health systems in SSA remain at risk of an impending health crisis due to COVID-19,
79 stressing the importance of ongoing clinical trials and improving health care access.

80

81

82 Introduction

83 The COVID-19 pandemic has killed hundreds of thousands of people, collapsing health systems
84 and economies around the world. Most models predict that without intervention, the majority of
85 the global population will become infected and tens of millions will die as a result of the pandemic
86 [1]. There have been particular concerns for sub-Saharan Africa (SSA) [2–4], as the major factors
87 that drive high burdens of other infectious diseases, such as the environmental and socio-
88 economic conditions, lack of water and sanitation infrastructure, and weak health systems, are
89 equally relevant to the threat of COVID-19. However, so far, the perceived burden of COVID-19
90 in SSA is low compared to expectations both from epidemiological models and from epidemic
91 patterns in other regions of the world [5,6]. Though SSA comprises 11% of the global population,
92 it has only 3.6% of the total global COVID-19 incidence, much of which is due to case reports
93 from South Africa [7]. As of July 2020, most SSA countries are reporting fewer than 100 new
94 cases daily [8]. There are three leading potential explanations for the lower observed burden of
95 COVID-19 in SSA: 1) low case detection, 2) region-specific epidemiology (e.g., different R_0), and
96 3) early implementation of effective policy interventions. The important difference among these
97 alternative explanations is that explanations based on low case detection and effective
98 interventions imply that there will be a major resurgence if interventions are relaxed, while
99 explanations based on region-specific epidemiology allow for a safe reopening.

100 The lower-than-expected number of reported cases may be due to low detection and
101 reporting rates. RT-PCR laboratory capacity in SSA is limited [9] and many countries have among
102 the lowest testing rates in the world [8]. Moreover, health care access for fever and respiratory
103 infections is low [10], which means that many symptomatic cases will not be detected, and the
104 stigma associated with COVID-19 could further reduce health-seeking behaviors [11].

105 The epidemiology-based explanations for low COVID-19 cases are based on
106 considerations of well-established factors: warmer climates, younger age distributions, and lower
107 contact rates due to lower population density and transportation infrastructure in rural areas
108 [12,13]. In addition, there is considerable interest in the potential immune-mediated
109 consequences from living in a system with greater exposure to other infectious diseases and
110 related prophylaxis and therapeutics [14]. For example, there are major trials underway on the
111 effects of trained immunity due to the BCG vaccine, which may increase innate immunity against
112 a range of respiratory infections [15]. However, many of these hypotheses have recently come
113 into doubt. The pandemic phase of COVID-19 is driven by high susceptibility, not climate [16],
114 suggesting that warmer, humid climates will not decrease transmission at this time. Further, past
115 outbreaks of influenza, including the 1968 pandemic and 2009 H1N1 outbreak, spread throughout

116 the African continent and were not limited by sparse transportation networks [17]. Explanations
117 based in region-specific epidemiology are therefore only weakly supported.

118 The policy response in Africa has also been a source of considerable optimism [5,18].
119 African governments implemented early and strong non-pharmaceutical intervention (NPI)
120 policies that may have effectively contained disease transmission [5,19]. The first case of COVID-
121 19 was reported in SSA one month later than the first cases in Europe, allowing countries to
122 prepare and implement NPIs, particularly lockdowns, social distancing, masks, and regulated
123 domestic travel, during the early stages of the pandemic [3,19,20]. Beginning in June, several
124 SSA countries began relaxing lockdown NPIs in response to the economic and social costs of
125 lockdown given the low reported case numbers. As partial lockdowns have been lifted, some
126 countries' case rates have remained stable, while others have begun to increase, leading to the
127 WHO to urge caution and emphasize the need for a gradual and conservative release of
128 confinement measures in SSA [21].

129 It remains unknown whether SSA-specific conditions will result in different epidemic
130 dynamics in SSA than elsewhere, and whether the current lower-than-expected case burdens
131 can be explained solely by detection rates and policies. To explore these issues, we compare
132 COVID-19 reported case data with predictions from a simple *SEIR* compartmental model for
133 Madagascar that integrates age-structured social contact matrices and fatality rates, assuming
134 an R_0 of 2.5 [22–24] (Appendix I). We then consider what levels of detection or NPI effectiveness
135 could explain the current state of the epidemic, and whether those levels are plausible given
136 Madagascar's policies, demographics, and environmental context. Finally, based on these
137 explanations, we investigate possible transmission scenarios for the first year of the epidemic, to
138 examine the future of COVID-19 dynamics and control in Madagascar, which could be applicable
139 to other SSA countries.

140 Madagascar's demographic, economic, and health system profile is comparable to many
141 other SSA countries [23,25,26]. It shares most of the major infectious diseases of mainland Africa
142 (e.g. tuberculosis, malaria, respiratory infections, diarrheal diseases), and has recently endured
143 among the worst epidemics of plague and measles in decades [27,28]. Like other SSA countries,
144 Madagascar reported its first imported case relatively late, on March 20, 2020, and the
145 government implemented NPIs early in the epidemic (Table 1). Madagascar instituted a national
146 lockdown on March 23, 2020, three days before its first case attributed to local transmission.
147 Testing practices are also similar to those in other SSA countries, initially focusing on screening
148 for imported cases and eventually expanding to test contacts of known cases for local
149 transmission.

150 Our exercise shows that the current incidence of COVID-19 in Madagascar can be
151 explained by the early and effective implementation of NPIs and low case detection rates, both of
152 which are supported by strong anecdotal evidence. In contrast, arguments of regional-specific
153 epidemiology are based on correlational observations that have yet to be proven. This suggests
154 that the epidemic will grow in Madagascar, and similar countries in SSA, and that these
155 populations remain at risk of an impending health crisis. Our model indicates that, if NPIs remain
156 enforced at the level needed to explain current case burdens, nearly 50,000 lives could be saved.
157 Even with NPIs, 30% of the Malagasy population would become infected by March 2021, making
158 COVID-19 the leading killer in Madagascar over this epidemic period, hence the importance of
159 conducting clinical trials and continually improving access to healthcare.

160

161 **Case Detection**

162 By July 2020, the simple forecast for an unmitigated epidemic predicts a daily incidence of 34,322
163 cases, which is nearly 500 times the reported daily incidence (Fig. 1A). Simply accounting for
164 detection rates between 0.1 - 1% results in predictions that closely approximate the reported daily
165 incidence of COVID-19 cases in Madagascar (Fig. 1B). Are these low levels of case detection
166 reasonable? For countries where per capita testing is over 100-fold higher than in Madagascar
167 (currently 79.1/100,000 population), it is estimated that less than 10% of COVID-19 cases have
168 been detected [29]. Though the precise case detection rates for Madagascar cannot be discerned
169 from available data, there are a number of indicators suggesting that these are lower than the
170 already low rates of Europe or the US.

171 First, case definitions in Madagascar may be stricter than elsewhere. In June 2020, about
172 12% of suspected cases tested were confirmed by RT-PCR in Madagascar compared to a
173 positivity rate of less than 5% in Europe and the US over the same period [30,31]. This suggests
174 strict criteria for test eligibility (e.g. requiring symptoms and known positive contacts) is being used
175 in Madagascar and many cases could potentially be missed. Further, strict diagnostic criteria may
176 be a result of the original testing policy of Madagascar early in the epidemic, which required that
177 suspected cases first test positive with antibody-based rapid detection tests (RDTs) before being
178 confirmed through RT-PCR tests. The low probability of detection of antibodies early in the
179 infectious period (i.e., the first week of symptoms) and the high rate of false-negatives with RT-
180 PCR later in the infectious period (i.e., after 7-10 days post symptom onset) [32] create a short
181 window for detection.

182 Second, the Madagascar health system itself is only receiving a portion of symptomatic
183 COVID-19 cases. The proportion of asymptomatic COVID-19 cases is estimated to be between

184 40 - 45% [33]. In Madagascar, surveys indicate that 40.2% of people with respiratory infection
185 symptoms seek healthcare [34], implying that over 50% of symptomatic COVID-19 infections may
186 not even enter a public health facility. For COVID-like symptoms, this rate could be much lower
187 given the stigma associated with the disease [11]. The combination of the high proportion of
188 asymptomatic cases and low health-seeking behaviors suggest that, even if health centers test
189 50% of symptomatic COVID-19 cases attending a health facility, this would detect less than 25%
190 of symptomatic cases.

191 Finally, there is limited diagnostic testing capacity in Madagascar, with RT-PCR testing
192 available in 5 laboratories across 3 major cities. It is unlikely that health facilities in rural areas of
193 the country, where nearly 50% of the population lives, are testing such a high percentage of cases.
194 We can account for all of these factors to estimate an upper bound of detection rates for
195 Madagascar (strict case definitions (0.3) x low proportion symptomatic (0.45) x low healthcare-
196 seeking behaviors (0.2) x limited testing infrastructure (0.25)) to reasonably explain a detection
197 rate in Madagascar of 1% or lower.

198

199 **Reduced Transmission**

200 A reduction in transmission rates of 30%, relative to an unmitigated scenario, can also explain the
201 daily case report rates of COVID-19 in Madagascar (Fig. 1C). This reduction could be the result
202 of NPI policies put in place in Madagascar or of innate characteristics affecting the epidemiology
203 of COVID-19 (e.g. baseline contact patterns, climate, etc.). NPIs were implemented within three
204 days after the first confirmed imported case of COVID-19 in the country (Table 1), the majority of
205 which focused on restricting intercity travel on roadways and included lockdowns in population
206 centers. In contrast, the UK instituted a partial-lockdown on March 23, 2020, 52 days after the
207 first confirmed case in the UK on January 31, 2020. The road system of Madagascar is highly
208 fragmented, with most travel on a limited number of paved national roads that run North-South
209 through the capital. Restricting travel on these roads has the potential to be highly effective in
210 reducing human mobility in Madagascar, and therefore the spread of COVID-19. Further, most
211 travel involves major population centers, particularly the capital city, Antananarivo [35]. These
212 cities had much more stringent NPIs put in place early in the epidemic, including city-wide
213 lockdowns and curfews (Table 1), and the targeted lockdown of these population centers could
214 have reduced spread to the rest of the country. While mobility data is not available for
215 Madagascar, other SSA countries have reported reductions in mobility ranging from 1.4% in
216 Zambia to 19% in Senegal compared to pre-NPI levels [36]. With a sparse road network that is
217 well regulated in Madagascar, 30% represents an obtainable reduction in contact rates.

218 Because NPIs were implemented early in the epidemic, their effects on transmission
219 cannot be disentangled from baseline contact patterns in the country, which may be lower than
220 those of Europe or the US. Nearly half (47.73%) of the Malagasy population lives in rural areas,
221 and most of the country is over 3 hours from a population center with more than 50,000 people
222 [37]. Therefore, baseline contact patterns in the rural areas of Madagascar may be reducing
223 disease spread in a way that is unidentifiable from the effects of NPIs.

224

225 **Which path is Madagascar on?**

226 The evidence presented here provides no indication that the epidemiology (e.g. R_0) of COVID-19
227 is fundamentally different in a fairly typical SSA country than elsewhere. We demonstrate that the
228 current trend in reported cases in Madagascar can be explained by its early stage in the epidemic,
229 combined with low detection rates and lower contact rates from NPIs (Fig. 2A). Understanding
230 how much of the discrepancy between predicted and reported case burdens is due to low
231 detection rates or NPIs has enormous implications for our expectations regarding the ‘true’ burden
232 of COVID-19 in Madagascar. For this, we explored different combinations of detection rates and
233 NPI efficacy that explain the observed trend in reported cases, together with associated
234 predictions of epidemic morbidity and mortality burdens (Figure 2). If the low number of reported
235 cases is due primarily to a low detection rate, we predict over 13 million people will be infected
236 with the virus if NPIs are not in place (Fig. 2C,D), imposing a huge burden on an already
237 weakened health system. On the other hand, if the low number of cases is due to a reduction in
238 contact patterns, the model predicts a lower total burden of approximately 8 million people
239 infected with the virus (Fig. 2C,D). If NPIs are driving these contact patterns and are responsible
240 for the lower-than-expected case burden, many cases and deaths are being averted, but the lifting
241 of these restrictions is very likely to lead to an uncontrolled outbreak.

242 Although the global epidemic began several months ago, current infectious disease
243 models for Madagascar and other SSA countries rely on limited data, resulting in disparate
244 predictions. Pearson et al. (2020) predicted a similar epidemic size for Madagascar as our model
245 in an unmitigated scenario, with 75% of the population and nearly 100,000 deaths. In contrast, an
246 analysis led by the WHO [12] predicted a total case burden nearly one third of this size (26% of
247 the population) and only a fraction of COVID-19 related deaths (1,500). This study assumed that
248 the regional particularities of SSA will decrease disease transmission and fatality rates based on
249 country-specific proxies for these factors, such as climate, transportation networks, and contact
250 matrices. Importantly, this study only considered *reductions* in transmission via reduced risks of
251 exposure, with a maximum of 2.6% of the population of Madagascar at risk of exposure at any

252 one time. While socio-ecological context is necessary to understand disease transmission, our
253 exercise suggests that the difference between reported and predicted case burdens in SSA can
254 be just as easily explained by accounting for low detection rates and NPIs that reduce
255 interpersonal contact.

256

257 **Conclusion**

258 We do not currently have enough evidence to suggest that the epidemiology of COVID-
259 19 is different in Madagascar than elsewhere. The low number of reported cases can be explained
260 by low detection rates, late introduction, and early and effective implementation of NPIs. In
261 contrast to the theory of a salutary epidemiology, each of these explanations is supported by
262 strong anecdotal evidence (Table 2). As lockdowns are gradually lifted, other NPIs, such as
263 handwashing and social distancing, should be implemented to avoid a rapid growth in cases. The
264 public health system should remain prepared for an outbreak, with a peak of infections expected
265 between August and December depending on the transmission scenario (Fig. 2D). The COVID-
266 19 epidemic could become the leading public health problem in Madagascar in 2020, causing
267 nearly twice as many deaths as are attributed to diarrheal disease [38]. It is important, therefore,
268 to conduct clinical trials and continually improve access to health care. If NPIs remain in place at
269 levels seen during the first months of the epidemic, the model suggests that this could prevent
270 over 50,000 COVID-19 related deaths in Madagascar.

271

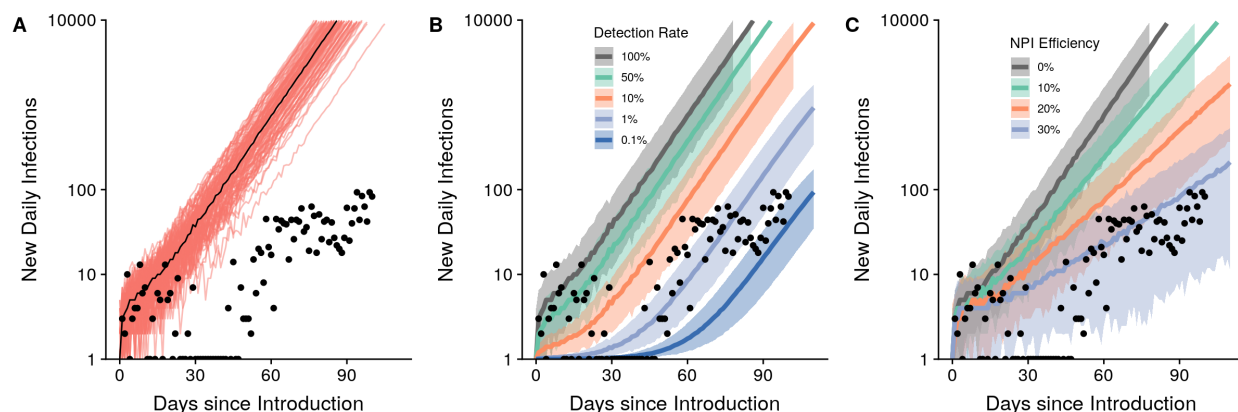
272 **Funding and Acknowledgements**

273 MVE was supported by a Graduate Research Fellowship (National Science Foundation). We
274 thank Tanjona Ramiadantsoa and Laura Cordier for their insights and comments on earlier drafts
275 of this manuscript.

276

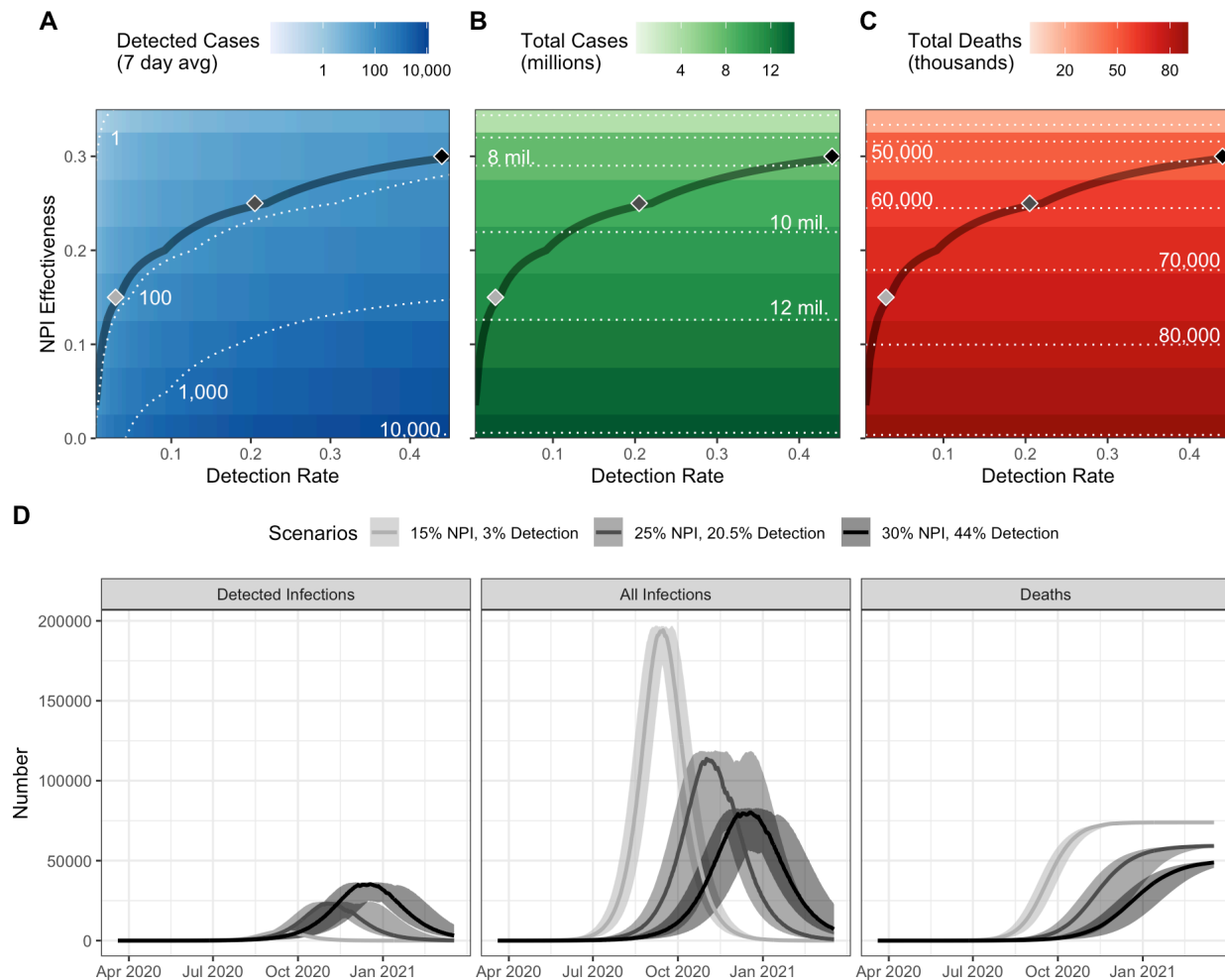
277

278 **Figures**



279
280 **Figure 1. The lower-than-expected daily incidence can be explained by detection rates of**
281 **0.1-1% or NPI efficiencies of 30% alone.** Predicted epidemic trajectories for the unmitigated
282 scenario (A), range of detection rates (B), and range of NPI efficiencies (C). Results from 100
283 simulations are shown in A with the black line representing the median number of cases. Shaded
284 regions represent the 95% confidence intervals around the median in panels B and C. All
285 simulations began on the date of the first positive imported case in Madagascar, March 20, 2020.
286 The y-axis is plotted on the log10-scale.

287
288
289
290



291

292

293 **Figure 2. Multiple combination of factors explain the low number of reported COVID-19**
 294 **cases in Madagascar, with important implications for predictions of epidemic dynamics.**

295 Predicted A) daily reported cases (7 day average) as of June 22 2020, B) total infection burden
 296 after one year, and c) total fatality burden after one year in Madagascar at different combinations
 297 of NPI effectiveness and detection rates. The contour line corresponds to a parameter space
 298 where the median number of predicted cases from 25 simulations equals the daily reported cases
 299 (7 day average) on June 22 (71.71 cases). Shaded diamonds correspond to specific scenarios
 300 explored in panel D, illustrating the dynamics of detected infections, all infections, and cumulative
 301 deaths over the first year of the epidemic.

302

303

304

305

306 **Table 1.** Timeline of non-pharmaceutical interventions (NPIs) implemented in Madagascar.

307

Date	Policy / Intervention / Program	Geographic extent (Region)
By March 19	Allowing the remaining people outside of the country and willing to return to Madagascar to come back	National level
March 20	Beginning of the epidemic in Madagascar with 3 initial imported cases announced	Analamanga*
March 20	Interruption of all international and regional flights from the outside of the country	National level
March 21	Following-up and testing all passengers entering Madagascar for the last 14 days for COVID-19	National level
March 23	Lockdown; curfew; interruption of all public transportation (ground and air travel) connecting Antananarivo and Toamasina to the other regions with establishment of health barrier at all national roads; prohibition of all meeting for more that 50 individuals	Analamanga* and Atsinanana**
March 26	Reception of 20000 Antibody RDT kits for COVID-19 testing	NA
March 31 to April 02	Mass Antibody RDT testing for all passengers entering Madagascar on March 11-19	Analamanga and Atsinanana
April 03	Adding the lockdown to Fianarantsoa after detection of COVID-19 confirmed cases	Haute-Matsiatra***, Analamanga and Atsinanana
April 05	Continuing lockdown and curfew	Analamanga, Atsinanana and Haute-Matsiatra
April 07-09	Temporary opening of national transportation by taxi-brousse to allow people from the other regions but blocked in other cities to return home	National level
April 17	Partial lifting of lockdown, which allow people to go out, as well as taxi and bus to work from 6:00 a.m. to 1:00 p.m; curfew maintained; social distancing and mandatory wearing of mask for all person going out	Analamanga, Atsinanana and Haute-Matsiatra
April 20	Launching the COVID Organics tisane based on Artemisia	NA
April 22	All classes preparing official exam resume	National level
May 04	All previous measures maintained, and adding the Alaotra-Mangoro region; church could receive no more than 50 persons	Analamanga, Atsinanana, Haute-Matsiatra and Alaotra-Mangoro****
May 04	Church could receive no more than 200 persons	The remaining 18 regions
May 17	All previous measures maintained	Analamanga, Atsinanana, Haute-Matsiatra and Alaotra-Mangoro
May 31	Progressive lifting of lockdown allowing people to work from 6:00 a.m to 3:00 p.m	Analamanga
May 31	Toamasina region totally locked to the other location, all classes interrupted, and people can work from 6:00 a.m. to 1:00 p.m	Atsinanana
May 31	All previous measures maintained	Alaotra-Mangoro
May 31	Daily life return to the normal because COVID-19 is controlled in Fianarantsoa	Haute-Matsiatra

June 14	Progressive lifting of lockdown allowing people to work from 6:00 a.m to 5:00 p.m, and public transportation until 7:00 p.m	Analamanga
June 14	Progressive lifting of lockdown from 6:00 a.m to 3:00 p.m	Atsinanana and Alaotra-Mangoro

308 * (Antananarivo)
 309 ** (Toamasina)
 310 *** (Fianarantsoa)
 311 **** (Moramanga, Ambatondrazaka, Anosibe an'Ala)
 312

313 **Table 2.** Summary of evidence supporting or opposing three possible explanations for the low
 314 number of reported cases of COVID-19 in Madagascar.

	Supporting	Opposing
Low detection rates	<ul style="list-style-type: none"> - High proportion of asymptomatic cases[33] - Strict testing criteria - Low healthcare seeking rates for acute respiratory infections[34] - Diagnostic practices that limit the window of detection 	<ul style="list-style-type: none"> - Recent evaluation of health system preparedness via the International Health Regulations meant health systems were on high alert for an outbreak [20]
Epidemiological differences	<ul style="list-style-type: none"> - Trained-immunity due to vaccinations or high prevalence of endemic disease could increase population's resistance to infection [14] - Transmission rate may be lower in sparsely populated areas [13] - Virus survival is lower in humid, warm environments 	<ul style="list-style-type: none"> - Limited role for climate during pandemic phase of the outbreak [16] - Past influenza outbreaks were not limited by sparse transport networks in SSA [17]
Early and effective NPIs	<ul style="list-style-type: none"> - Lockdown in population centers implemented three days after first imported case - Limiting travel on fragmented paved road network can easily disrupt within-country movement 	

315

316

317 **References**

- 318 1 Clark A, Jit M, Warren-Gash C, *et al.* Global, regional, and national estimates of the
319 population at increased risk of severe COVID-19 due to underlying health conditions in
320 2020: a modelling study. *The Lancet Global Health* 2020;0. doi:10.1016/S2214-
321 109X(20)30264-3
- 322 2 El-Sadr WM, Justman J. Africa in the Path of Covid-19. *New England Journal of Medicine*
323 Published Online First: 17 April 2020. doi:10.1056/NEJMp2008193
- 324 3 Massinga Loembé M, Tshangela A, Salyer SJ, *et al.* COVID-19 in Africa: the spread and
325 response. *Nature Medicine* 2020;:1–4. doi:10.1038/s41591-020-0961-x
- 326 4 Nkengasong JN, Mankoula W. Looming threat of COVID-19 infection in Africa: act
327 collectively, and fast. *Lancet* 2020;395:841–2. doi:10.1016/S0140-6736(20)30464-5
- 328 5 Rosenthal PJ, Breman JG, Djimde AA, *et al.* COVID-19: Shining the Light on Africa. *The*
329 *American Journal of Tropical Medicine and Hygiene* 2020;102:1145–8.
330 doi:10.4269/ajtmh.20-0380
- 331 6 Taboe BH, Salako VK, Ngonghala CN, *et al.* Predicting COVID-19 spread and public health
332 needs to contain the pandemic in West-Africa. *medRxiv* 2020;:2020.05.23.20111294.
333 doi:10.1101/2020.05.23.20111294
- 334 7 Africa Centers for Disease Control and Prevention. Outbreak Brief 22: COVID-19 Pandemic
335 – 16 June 2020. 2020. <https://africacdc.org/download/outbreak-brief-22-covid-19-pandemic-16-june-2020/> (accessed 24 Jun 2020).
- 337 8 Africa Centers for Disease Control and Prevention. Coronavirus Disease 2019 (COVID-19).
338 2020. <https://africacdc.org/covid-19/>
- 339 9 Kavanagh MM, Erondy NA, Tomori O, *et al.* Access to lifesaving medical resources for
340 African countries: COVID-19 testing and response, ethics, and politics. *The Lancet*
341 2020;395:1735–8. doi:10.1016/S0140-6736(20)31093-X
- 342 10 Requejo J, Diaz T, Park L, *et al.* Assessing coverage of interventions for reproductive,
343 maternal, newborn, child, and adolescent health and nutrition. *BMJ* 2020;368.
344 doi:10.1136/bmj.l6915
- 345 11 Logie CH. Lessons learned from HIV can inform our approach to COVID-19 stigma. *Journal*
346 *of the International AIDS Society* 2020;23:e25504. doi:10.1002/jia2.25504
- 347 12 Cabore JW, Karamagi HC, Kipruto H, *et al.* The potential effects of widespread community
348 transmission of SARS-CoV-2 infection in the World Health Organization African Region: a
349 predictive model. *BMJ Global Health* 2020;5:e002647. doi:10.1136/bmjgh-2020-002647
- 350 13 Diop BZ, Ngom M, Biyong CP, *et al.* The relatively young and rural population may limit the
351 spread and severity of COVID-19 in Africa: a modelling study. *BMJ Global Health*
352 2020;5:e002699. doi:10.1136/bmjgh-2020-002699

- 353 14 Netea MG, Domínguez-Andrés J, Barreiro LB, *et al.* Defining trained immunity and its role in
354 health and disease. *Nature Reviews Immunology* 2020;**20**:375–88. doi:10.1038/s41577-
355 020-0285-6
- 356 15 O'Neill LAJ, Netea MG. BCG-induced trained immunity: can it offer protection against
357 COVID-19? *Nature Reviews Immunology* 2020;**20**:335–7. doi:10.1038/s41577-020-0337-y
- 358 16 Baker RE, Yang W, Vecchi GA, *et al.* Susceptible supply limits the role of climate in the
359 early SARS-CoV-2 pandemic. *Science* Published Online First: 18 May 2020.
360 doi:10.1126/science.abc2535
- 361 17 Katz MA, Schoub BD, Heraud JM, *et al.* Influenza in Africa: Uncovering the Epidemiology of
362 a Long-Overlooked Disease. *J Infect Dis* 2012;**206**:S1–4. doi:10.1093/infdis/jjs548
- 363 18 Moore J. What African Nations Are Teaching the West About Fighting the Coronavirus. The
364 New Yorker. 2020.[https://www.newyorker.com/news/news-desk/what-african-nations-are-](https://www.newyorker.com/news/news-desk/what-african-nations-are-teaching-the-west-about-fighting-the-coronavirus)
365 [teaching-the-west-about-fighting-the-coronavirus](https://www.newyorker.com/news/news-desk/what-african-nations-are-teaching-the-west-about-fighting-the-coronavirus) (accessed 2 Jul 2020).
- 366 19 Senghore M, Savi MK, Gnangnon B, *et al.* Leveraging Africa's preparedness towards the
367 next phase of the COVID-19 pandemic. *The Lancet Global Health* 2020;**8**:e884–5.
368 doi:10.1016/S2214-109X(20)30234-5
- 369 20 Ihekweazu C, Agogo E. Africa's response to COVID-19. *BMC Medicine* 2020;**18**:151.
370 doi:10.1186/s12916-020-01622-w
- 371 21 World Health Organization. WHO urges caution as countries in Africa ease lockdowns.
372 Regional Office for Africa. 2020.[https://www.afro.who.int/news/who-urges-caution-countries-](https://www.afro.who.int/news/who-urges-caution-countries-africa-ease-lockdowns)
373 [africa-ease-lockdowns](https://www.afro.who.int/news/who-urges-caution-countries-africa-ease-lockdowns) (accessed 2 Jul 2020).
- 374 22 Roche B, Garchitorea A, Roiz D. Optimal strategies for quarantine stopping in France.
375 General expected patterns of strategies focusing on contact between age groups. *medRxiv*
376 2020;:2020.04.21.20073932. doi:10.1101/2020.04.21.20073932
- 377 23 Prem K, Cook AR, Jit M. Projecting social contact matrices in 152 countries using contact
378 surveys and demographic data. *PLOS Computational Biology* 2017;**13**:e1005697.
379 doi:10.1371/journal.pcbi.1005697
- 380 24 Kissler SM, Tedijanto C, Goldstein E, *et al.* Projecting the transmission dynamics of SARS-
381 CoV-2 through the postpandemic period. *Science* 2020;**368**:860–8.
382 doi:10.1126/science.abb5793
- 383 25 Pearson CA, Schalkwyk CV, Foss AM, *et al.* Projected early spread of COVID-19 in Africa
384 through 1 June 2020. *Eurosurveillance* 2020;**25**:2000543. doi:10.2807/1560-
385 7917.ES.2020.25.18.2000543
- 386 26 Walker PGT, Whittaker C, Watson OJ, *et al.* The impact of COVID-19 and strategies for
387 mitigation and suppression in low- and middle-income countries. *Science* Published Online
388 First: 12 June 2020. doi:10.1126/science.abc0035

- 389 27 Bonds MH, Ouenzar MA, Garchitorena A, *et al.* Madagascar can build stronger health
390 systems to fight plague and prevent the next epidemic. *PLOS Neglected Tropical Diseases*
391 2018;**12**:e0006131. doi:10.1371/journal.pntd.0006131
- 392 28 Mahase E. Measles cases at highest point since 2006 as outbreaks continue to spread.
393 *BMJ* 2019;**366**. doi:10.1136/bmj.l5141
- 394 29 Havers FP, Reed C, Lim TW, *et al.* Seroprevalence of Antibodies to SARS-CoV-2 in Six
395 Sites in the United States, March 23-May 3, 2020. *medRxiv* 2020;:2020.06.25.20140384.
396 doi:10.1101/2020.06.25.20140384
- 397 30 Madagascar Ministry of Health. COVID-19 - Madagascar. 2020.
398 <https://covid19mg.madatsara.com/en>
- 399 31 John Hopkins University. Johns Hopkins COVID-19 Testing Insights Initiative. 2020.
400 <https://coronavirus.jhu.edu/testing>
- 401 32 Kucirka LM, Lauer SA, Laeyendecker O, *et al.* Variation in False-Negative Rate of Reverse
402 Transcriptase Polymerase Chain Reaction–Based SARS-CoV-2 Tests by Time Since
403 Exposure. *Ann Intern Med* Published Online First: 13 May 2020. doi:10.7326/M20-1495
- 404 33 Oran DP, Topol EJ. Prevalence of Asymptomatic SARS-CoV-2 Infection: A Narrative
405 Review. *Annals of Internal Medicine* 2020;:M20-3012. doi:10.7326/M20-3012
- 406 34 UNICEF. Madagascar Multiple Indicator Cluster Survey version 6. 2018.
407 <https://mics.unicef.org/>
- 408 35 Ihantamalala FA, Herbreteau V, Rakotoarimanana FMJ, *et al.* Estimating sources and sinks
409 of malaria parasites in Madagascar. *Nature Communications* 2018;**9**:3897.
410 doi:10.1038/s41467-018-06290-2
- 411 36 Google. COVID-19 Community Mobility Reports. 2020.
412 <https://www.google.com/covid19/mobility/> (accessed 14 Jun 2020).
- 413 37 Weiss DJ, Nelson A, Gibson HS, *et al.* A global map of travel time to cities to assess
414 inequalities in accessibility in 2015. *Nature* 2018;**553**:333–6. doi:10.1038/nature25181
- 415 38 Roth GA, Abate D, Abate KH, *et al.* Global, regional, and national age-sex-specific mortality
416 for 282 causes of death in 195 countries and territories, 1980–2017: a systematic analysis
417 for the Global Burden of Disease Study 2017. *The Lancet* 2018;**392**:1736–88.
418 doi:10.1016/S0140-6736(18)32203-7
- 419