

1 **Qualitative Changes in the SARS-CoV-2 Antibody Response in the Post-Infection Phase Impact**
2 **the estimates of infections in Population-Based Seroprevalence Studies**

3
4 Craig Fenwick^{‡1}, Antony Croxatto^{‡2}, Alix T. Coste^{‡2}, Florence Pojer^{‡5}, Cyril André¹, Céline Pellaton¹,
5 Alex Farina¹, Jérémy Campos¹, David Hacker⁵, Kelvin Lau⁵, Berend-Jan Bosch⁴, Semira Gonseth
6 Nussle⁷, Murielle Bochud⁷, Valerie D’Acremont⁷, Didier Trono^{6*}, Gilbert Greub^{2,3*}, Giuseppe
7 Pantaleo^{1,8*}

- 8
9 1- Service of Immunology and Allergy, Department of Medicine, Lausanne University Hospital
10 and University of Lausanne, Lausanne, Switzerland
11 2- Institute of Microbiology, Lausanne University Hospital and University of Lausanne,
12 Lausanne, Switzerland
13 3- Service of Infectious Diseases, Lausanne University Hospital, Switzerland
14 4- Virology Section, Infectious Diseases and Immunology Division, Department of Biomolecular
15 Health Sciences, Faculty of Veterinary Medicine, Utrecht University, Utrecht, the
16 Netherlands.
17 5- Protein Production and Structure Core Facility, School of Life Sciences, École Polytechnique
18 Fédérale de Lausanne (EPFL), Lausanne, Switzerland.
19 6- School of Life Sciences, Ecole Polytechnique Fédérale de Lausanne, Lausanne, Switzerland.
20 7- Centre for Primary Care and Public Health, University of Lausanne, Lausanne, Switzerland.
21 8- Swiss Vaccine Research Institute, Lausanne University Hospital and University of Lausanne,
22 Switzerland.

23
24
25
26 Key words: SARS-CoV-2, serology, S protein trimer

27
28
29 Running title: Anti-S and anti-N protein antibody responses

30
31 ‡Authors contributing equally

32
33
34 *Corresponding authors: Prof. Giuseppe Pantaleo
35 Service of Immunology and Allergy
36 Lausanne University Hospital
37 1011 Lausanne, Switzerland
38 giuseppe.pantaleo@chuv.ch

39
40 Prof. Gilbert Greub
41 Service of Microbiology
42 Lausanne University Hospital
43 1011 Lausanne, Switzerland
44 gilbert.greub@chuv.ch

45
46 Prof. Didier Trono
47 School of Life Sciences
48 Ecole Polytechnique Fédérale de Lausanne
49 Lausanne, Switzerland
50 didier.trono@epfl.ch

51 NOTE: This preprint reports new research that has not been certified by peer review and should not be used to guide clinical practice.

52 **Abstract**

53

54 In the present study, we have determined SARS-CoV-2-specific antibody responses in a cohort
55 of 96 individuals during the acute phase of infection and in a cohort of 578 individuals enrolled
56 in a seroprevalence population study in Switzerland including three groups, i.e. subjects with
57 previous RT-PCR confirmed SARS-CoV-2 infections (n=90), 'positive patient contact' (n=177)
58 and 'random selected subjects' (n=311). Six serological assays detecting predominantly IgG
59 antibodies targeting either the Spike (S) and/or the nucleocapsid (N) proteins were used
60 including also a Luminex based assay using an S protein in its native trimeric form. Antibody
61 responses against the S and/or the N proteins were equally sensitive in the acute infection
62 phase although differences in sensitivity (range 83 to 97% 16-33 days post-initial symptoms)
63 were observed between the different assays and the Luminex S protein trimer assay was the
64 most sensitive. Interestingly, antibody responses against the N protein appear to wane in the
65 post-infection phase of the infection while those against the S protein persist over time, as
66 indicated by the drop in sensitivity of the assays targeting the N protein (sensitivity range 71-
67 77%). Assays detecting anti-N IgG antibodies may substantially underestimate the proportion
68 of SARS-CoV-2 infections in the groups of 'patient positive contacts', i.e. 10.9 to 32.2%
69 reduction ($P<0.05$ - <0.0001) and in the 'random selected' general population, i.e. up to 45%
70 reduction ($P<0.05$). The overall reduction in seroprevalence for the total cohort ranged from
71 9.4 to 31% ($P<0.0009$ - <0.0001). Of note, the assay using the S protein in its native trimer form
72 was more sensitive as compared to those using monomeric S proteins.

73 These results indicate that assays targeting the S protein, ideally the trimeric form,
74 should be implemented as reference test to estimate SARS-CoV-2 infections in
75 seroprevalence population studies.

76

77

78 **Introduction**

79
80

81 The SARS-CoV-2 is currently causing a devastating pandemic with more than 12.7 million
82 documented infections and more than 566'000 deaths, according to the latest WHO situation
83 report from July 13th, 2020 ¹. However, the true incidence of the infection is largely
84 underestimated, since in most countries asymptomatic and paucisymptomatic people are
85 tested only if they came in direct contact with sick patients or belong to at-risk subgroups.
86 Therefore, it is a public health urgency to perform large-scale population-based studies in
87 order to determine rates of seroprevalence during the first wave of the SARS-CoV-2 pandemic
88 and to implement continued surveillance with the combined use of viral detection tests such
89 as RT-PCR and serological testing. Seroprevalence studies are also instrumental to determine
90 the proportion of individuals with potential protective immunity ²⁻⁴

91

92 Most commercially available SARS-CoV-2 serology assays detect IgG and some also IgA, IgM
93 and/or all three immunoglobulin (Ig) subtypes. Detecting both IgA and IgG may increase
94 sensitivity, particularly for people experiencing paucisymptomatic or asymptomatic infection.
95 However, IgM does not seem to be of great benefit to overall sensitivity, since IgM
96 appearance coincides with IgG antibodies during the early phase of infection, i.e. less than 15
97 days after the onset of symptoms and may increase the likelihood of false positive results due
98 to cross-reactivity ^{5,6}.

99

100 One of two proteins serve as baits in the majority of serological assays: the nucleocapsid
101 protein (N) and the Spike protein (S). It has been suggested that the serological assays
102 targeting the S protein are more specific while those targeting at N may be more sensitive,
103 particularly in the early phase of infection ⁷.

104

105 A comparison of 17 different serological assays using sera from hospitalized patients with
106 moderate to severe COVID-19 disease confirmed the overall higher sensitivity of assays
107 targeting the N protein investigating ⁸. In this study, the DiaSorin CLIA that targets the S
108 protein only exhibited 92% sensitivity whereas the Epitepe Diagnostics ELISA and the Snibe
109 assay that both target the N protein exhibited a sensitivity of 96% ⁸. However, this increased

110 sensitivity of N-based assays might be at the expense of specificity, given the relatively high
111 protein sequence similarity of the N protein of SARS-CoV-2 with nucleocapsid proteins of
112 other Coronaviridae and other viruses. Moreover, during the SARS outbreak (2002-2004),
113 Chia et al observed that anti-N antibodies waned earlier than anti-S antibodies⁹. Thus, assays
114 targeting the S proteins might be more specific and circumvent a possible decrease of
115 antibodies, previously observed with N protein of the SARS virus. Thus, assays targeting the S
116 protein might be more specific and circumvent a possible decrease in antibody titers, as the
117 one previously observed after SARS. Furthermore, it is still unknown the durability of SARS-
118 CoV-2 antibody response. Previous studies have shown early disappearance of antibodies to
119 SARS-associated coronavirus after recovery¹⁰ while other studies have shown longer
120 durability of the antibody response¹¹⁻¹⁴.

121

122 In a recent study, the only test scoring negative on 404 sera taken before the pandemics (in
123 2018 & 2019) was the DiaSorin test, which targets the S protein; however, this high specificity
124 was at the expense of a lower sensitivity (92%). We hypothesized that the lower sensitivity of
125 most S-based assays reported so far might be explained due to their use of a monomeric form
126 of S moieties, including the S1 or RBD domains, and that using S in its native trimeric
127 conformation might increase sensitivity while preserving specificity.

128

129 We thus developed an IgA and IgG serological assay using the trimeric form of the S protein
130 and the Luminex technology. This new assay was first evaluated using 96 sera obtained during
131 the first 33 days of the acute phase of infection from subjects with moderate to severe
132 symptoms, and further validated on 578 sera obtained in the post-infection phase mostly
133 paucisymptomatic participants enrolled in the population-based seroprevalence study of the
134 Vaud Canton in Switzerland. All sera were tested in parallel with five commercial assays
135 targeting either the N and/or the S proteins. The Luminex assay exhibited the best accuracy
136 with very high sensitivity in sera from both the acute and post-infection settings. In contrast,
137 the tests targeting the N protein were less sensitive in detection seropositive donors in the
138 post-infection phase.

139

140 The newly developed Luminex assay had the highest sensitivity in the sera of the post-
141 infection phase thus providing more accurate estimates of SARS-CoV-2 infections in the
142 general population.

143 Taken together, these results indicate that S protein based assays should be used in
144 population-based seroprevalence studies and that the trimeric form is associated with greater
145 sensitivity than the monomeric form.

146

147 **Results**

148

149 **Novel Serological Binding Assay using the S protein trimer**

150 A stabilized trimer of the full-length S protein, encompassing both its S1 and S2 moieties, was
151 coupled to beads for capturing antibodies in a new Luminex assay. We hypothesized that
152 conformational epitopes would be preserved in the trimeric S protein, providing a greater
153 sensitivity to detect IgG antibodies (**Supplementary Figure 1A and B**). First, the specificity for
154 IgG antibody binding was established with sera from 256 pre-COVID-19 pandemic healthy
155 adults from 18 to 81 years of age and an additional set of 108 patients (**Figure 1A**), which
156 included: pregnant women, individuals infected with alphacoronaviruses (NL63 and 229E),
157 betacoronaviruses (OC43 and HKU1), HIV, Rubella, HSV1, HSV2, RSV, CMV, EBV, influenza or
158 varicella, as well as patients suffering from autoimmune diseases such as Lupus. The signal
159 distribution for all SARS-CoV-2 negative sera was similar for the 256 pre-COVID-19 healthy
160 adults and for the diverse panel of 108 subjects. A cut-off for positivity was set at 4-fold above
161 a negative control standard, which is slightly more than four standard deviation above the
162 mean of all negative control samples (mean MFI ratio $0.84 + 4 \times 0.75$ SD). Using this threshold,
163 only one sera of the 256 pre-COVID-19 people and two patients with acute HIV or CMV viral
164 infections gave a positive signal (**Figure 1 A**). As such, the Luminex assay using the stable
165 trimeric S protein gave a high overall specificity of 99.2% and no cross-reactive antibodies
166 were detected in sera from people infected with pre-pandemic coronaviruses or from
167 patients with autoimmune diseases that can produce polyreactive antibodies. Considering
168 that two of the three false positives from the 364 SARS-CoV-2 negative donors had MFI signals
169 less than 6 (**Figure 1A**), an additional criteria for positivity was established for large general
170 population screens, including the post-infection cohort. Here, sera with signal intensities
171 between 4 and 6 were defined as being at the limit of positivity, which increases the assay
172 sensitivity to 99.7% with only one acute HIV infected subject having a 6.8 MFI signal.

173

174 The sensitivity of the assay was next evaluated using sera from 96 acutely infected SARS-CoV-
175 2 PCR-positive patients with blood sampling at 0-5 days, 6-10 days, 11-15 days and 16-33 days
176 post-onset of symptoms (POS). As anticipated, sera collected during the early stage of the
177 infection (0-5 days POS) had low or undetectable levels of anti-S protein IgG antibodies, with
178 a rate of positivity of 12.5% (1 in 8 subjects; **Figure 1B**). Seropositivity increased to 42.1%

179 (8/19) at 6-10 days POS and to 91.7% (33/36) at 11-15 days POS. Almost all patients with
180 symptoms for 16-33 days (28/29; 96.6%) displayed high antibody titers for the S protein. A
181 mean MFI signal ratio of 85 was obtained with the Luminex assay with sera collected from
182 these patients 16-33 days POS, which was significantly higher than the signal obtained with
183 sera from all other time categories ($P = 0.05$ relative to 11-15 days and $P < 0.0001$ relative to
184 0-5 days and 6-10 days POS; Mann-Whitney test). Interestingly, the only subject that was
185 negative in the S protein trimer assay at day 25 post-onset of symptoms became seropositive
186 when re-tested seven days later. Since signal intensity often comes at the expense of
187 specificity, it is all the more important that the Luminex assay using the S protein trimer
188 provides high MFI signals, high detection of PCR-positive donors yet exceptional specificity
189 with negative results with sera from pre-COVID-19 healthy donor and patients hospitalized
190 prior to November 2019.

191

192 **Quantitative Luminex assay for anti-Spike IgG antibodies**

193 Apart from the identification of seropositive subjects, the quantitation of the anti-SARS-CoV-
194 2 antibodies provides valuable insight into the extent of the humoral immune response and
195 its persistence over time. Using the S protein trimer Luminex assays, we generated a standard
196 binding curve with the commercially available CR3022 anti-S1 IgG1 antibody (**Figure 1C**). This
197 clone was initially identified as a neutralizing antibody for SARS-CoV-1, but was subsequently
198 shown to bind specifically to the SARS-CoV-2 Spike protein¹⁵. Evaluation of serum dilutions
199 from 1/300 down to 1/24'000 allowed to precisely determine the anti S protein IgG antibody
200 concentrations that ranged from 54 $\mu\text{g/ml}$ to 820 $\mu\text{g/ml}$ in a panel of sera tested from patients
201 with acute infection (**Figure 1D**). All the commercially available assays are semi-quantitative
202 and thus the Luminex based S trimer assay is the only one providing an accurate quantification
203 of the magnitude of the SARS-CoV-2 antibody response.

204

205 **Specificity and sensitivity of IgA antibody binding in the Luminex S protein trimer assay**

206 We next evaluated the Luminex S protein trimer assay for the detection of anti-SARS-CoV-2
207 IgA antibodies. We established assay specificity and a cut-off threshold for positivity by
208 screening sera from pre-COVID-19 healthy adults. Using four standard deviations above the
209 standard negative control, this assay provided a 98.5% specificity in the 256 sera tested. The
210 sensitivity of the Luminex IgA assay was estimated on 81 out of 96 acute infected SARS-CoV-

211 2 patients' sera with positive detections ranging from 33.3% of patients at 0-5 days POS with
212 seropositivity increasing to 68.8% in patients from the 6-10 days group. At 11-15 and 16-33
213 days POS, IgAs were detected in 94.4% and 90% of the cases, respectively (**Figure 2**).

214

215 **Comparison of Immunoassays targeting the S and N SARS-CoV-2 proteins during the acute** 216 **phase of infection**

217 The new Luminex S protein trimer IgG assay was compared with five commercially available
218 SARS-CoV-2 immunoassays: i) two ELISAs from EuroImmun and Epitepe Diagnostics detecting
219 IgG against the S1 and N proteins, respectively, ii) two CLIA from Diasorin and Snibe detecting
220 IgG against S and S+N proteins, respectively, and iii) a pan-Ig ECLIA from Roche targeting the
221 N protein. Since the commercial assays provide semi-quantitative estimates of the antibody
222 response, semi-quantitative estimates generated from the Luminex assay were used for the
223 comparison analyses. We performed the comparison on the same set of 96 sera from patients
224 with acute infection and stratified based on time between symptoms onset and sera
225 collection as shown in **Figures 1B**. Small differences in the number of sera tested across assays
226 is due to insufficient volume of some samples. We evaluated the specificity of the six tests on
227 a common panel of 65 pre-COVID-19 pandemic sera sampled before November 2019.

228 An increased in sensitivity was observed over time post-symptoms with all six assays (**Figure**
229 **3 A-B, Table 1**). After 10 days POS, all assays but the Diasorin SARS-CoV-2 IgG kit (57%)
230 reached a sensitivity above 70 %. Three assays, including the Luminex S protein trimer IgG
231 assay, reached a sensitivity greater than 90% after 15 days POS. The three other assays
232 exhibited a sensitivity slightly lower than 90% at 16-33 days POS, i.e. the Epitepe diagnostic
233 ELISA IgG test (89%), the EuroImmun ELISA IgG test (88%), and the Diasorin SARS-CoV-2 IgG
234 CLIA kit (83%) (**Figure 3 B and C; Table 1**). All six tests had a specificity equal or above 97%
235 (**Figure 3 C**) and none displayed cross-reactivity with sera from patients positive for 229E,
236 OC43, HKU1, NL63 coronaviruses (**Figure 1A**).

237

238 Taken together, these results indicate that the sensitivity of serological assays targeting the S
239 and/or the N proteins are similar on sera taken during the acute phase of infection.

240 Of note, we have also performed head-to-head comparison of trimeric versus monomeric S
241 proteins IgG responses within the Luminex assay. The responses observed in the Luminex
242 assay with the S monomeric proteins were similar in sensitivity to those detected in other

243 assays using monomeric proteins but inferior to those obtained with the trimeric S protein
244 **(Supplemental Figure 2A and B).**

245

246 We also compared the Luminex S protein trimer IgG and IgA assay with the EuroImmun ELISA
247 IgG and IgA test. We evaluated these four tests using 81 sera from the acute phase patients.
248 We observed that the two IgA tests detected anti-SARS-CoV-2 antibodies earlier than the IgG
249 assays. Between 0 and 5 days POS, the Luminex IgA and EuroImmun IgA tests showed a
250 sensitivity of 33% and 22%, respectively, and the corresponding IgG tests had sensitivities of
251 only 11% (**Table 2**). Between 6 and 10 days POS, the Luminex IgA and EuroImmun IgA tests
252 showed a sensitivity of 69% and 63%, respectively, compared to the Luminex IgG test with a
253 sensitivity of 44% and EuroImmun IgG of 31%. Comparing IgA and IgG positivity for 0 to 10
254 days POS showed a clear trend with anti-S protein IgA antibodies detected earlier than IgG
255 during the acute phase of infection ($P=0.077$ for Luminex and EuroImmun tests independently
256 that increases to $P=0.006$ with the artificial combining of results from the two assay;
257 McNemar test). Although both IgA antibody tests show this same trend, it appeared that the
258 Luminex S protein trimer IgA assay was systematically more sensitive (56%) than the
259 EuroImmun ELISA IgA tests (48%) in all early-infected subjects up to 10 days POS (**Table 2**).

260

261 **Comparison of Immunoassays targeting the S and N SARS-CoV-2 proteins during the post-** 262 **infectious phase of infection and for seroprevalence studies**

263 We next evaluated the performance of the six SARS-CoV-2 assays targeting the N and/or S
264 proteins on 578 sera as part of a seroprevalence population study of the Vaud Canton in
265 Switzerland, while being blind to the seropositivity status. These comparisons included 90
266 sera sampled from mildly to paucisymptomatic patients tested positive by RT-PCR, 177 sera
267 sampled from positive contacts of RT-PCR positive subjects, and 311 sera sampled from
268 undefined, randomly selected people from the general population aged 6 months and over.
269 Results of the comparisons are shown in **Figure 4**, and **Table 3**. As expected, a good correlation
270 of signal intensities was observed between the Luminex IgG assay using the S protein trimer
271 and the other S protein targeting assays, while a poorer correlation was observed with anti-
272 N assays (**Figure 4**).

273

274 In the 90 sera sampled from RT-PCR positive patients (**Figure 4**, blue dots), the Luminex IgG
275 assay demonstrated the best sensitivity (96.7%), followed by the Roche pan-Ig ECLIA (95.6%).
276 The two tests detecting anti-S antibodies, Diasorin and EuroImmun, both had significantly
277 higher sensitivity (88.9%) than the Epitope Diagnostics ELISA anti-N (76.7%). Finally, the Snibe
278 CLIA IgG test, which targets mainly the N protein and an undefined part of the S protein,
279 showed a much lower sensitivity, i.e. 71.1% (**Table 3**).

280

281 In the sera of positive contact subjects (**Figure 4**, red dots), the Luminex IgG assay had the
282 highest positivity rate (36.2%), again followed by the Roche pan-Ig ECLIA (32.2%). The
283 EuroImmun and Diasorin gave similar positive rates of 29.9% and 28.2%, respectively while
284 the Epitope Diagnostics and Snibe CLIA IgG tests exhibited the lowest positivity rate (26.0%
285 and 24.3%, respectively) (**Figure 4** and **Table 3**).

286

287 With regard to the sera from randomly selected subjects for the population based
288 seroprevalence study (**Figure 4**, green dots ; **Table 3**), we observed that tests detecting anti-S
289 antibodies identified greater percentages of SARS-CoV-2 positive people (between 6.4 to
290 4.2%), than the tests targeting anti-N antibodies (4.5 to 3.5%). Importantly, the Roche pan-Ig
291 assay using the N protein antigen was the second most sensitive assay in the acute infected
292 patients and the PCR-positive and positive contact subjects in the post-infection cohort, but
293 conversely, was one of the least sensitive assays (3.9%) in detecting seropositive people
294 randomly selected from the general population. The significantly higher sensitivities of the
295 Luminex S protein trimer assay in the post-infection setting compared to all five other
296 serological assays is highlighted in **Figure 5**. Compared to the other tests, the Luminex IgG
297 assay detected 10.9% to 32.8% more positive sera in the positive contact group, 30% to 45%
298 more positive tests in the randomly selected population-based samples and 17.9% to 35.7%
299 more positive tests in a combined analysis of the contact group and population-based
300 samples. In the overall post-infection set of 578 sera, the Luminex IgG assay performed
301 significantly better and detected between 9.4% and 31% more seropositive participants than
302 the other five assays (**Figure 5**).

303

304 Taken together, these results indicate that assays detecting anti-N IgG antibodies may
305 substantially (i.e. up to 45%) underestimate the proportion of SARS-CoV-2 exposed individuals

306 compared to those detecting anti-S IgG antibodies in population-based seroprevalence
307 studies.

308

309 **Discussion**

310

311 Population-based seroprevalence studies are important to monitor the dynamics of the
312 pandemic, to have a better appreciation of the number of infections and to determine the
313 proportion of the population that has developed specific SARS-CoV-2 immunity.
314 Seroprevalence studies performed in Switzerland, Spain and in New York City indicate that a
315 minor percentage of the population, ranging from 10 to 20% of individuals, has been infected
316 with SARS-CoV-2 ^{2-4,16-18}. The estimates of SARS-CoV-2 infected individuals from
317 seroprevalence studies may be substantially influenced by the sensitivity of the assays used
318 to determine the antibody responses.

319 A large number of assays have been developed to detect IgG, IgA and IgM SARS-CoV-2 specific
320 antibodies. These assays target either the S protein or the N protein. The validation of the
321 assays with regard to the sensitivity and specificity has been mostly performed on sera from
322 patients during the acute phase of infection ^{16,19-21}. Despite some differences in sensitivity
323 between the various assays, assays targeting the N and the S proteins were considered as
324 equally sensitive, with a generally higher sensitivity for those targeting N. Either assays,
325 targeting either N or S, were therefore considered as equally suitable for population-based
326 seroprevalence studies. However, limited information is yet available on the evolution of the
327 antibody response during progression from the acute to the post-infection phase and, in
328 particular, on the antibody responses against the two targets, S and N proteins. For these
329 reasons, we evaluated antibody responses using six different assays targeting the N and/or
330 the S proteins.

331 Our results indicate a substantial drop in sensitivity of the three assays targeting the N protein
332 thus strongly suggesting a waning of the anti-N antibody responses in the post-infection
333 phase. Importantly, the estimated seroprevalences are mostly impacted in the 'positive
334 patient contacts' group and 'randomly selected' population-based samples with an
335 underestimation ranging from 11 to 33% for the former and 30 to 45% for the latter group.

336 Of note, the new Luminex-based assay using the trimeric S protein showed a greater
337 sensitivity than two assays using monomeric S1 or RBD. The underestimation of SARS-CoV-2

338 seropositive individuals was in the range of 18-22% in the ‘positive patient contacts’ and 30-
339 35% in the population-based samples. The greater sensitivity of the Luminex assay using the
340 trimeric S protein likely results from the conservation of conformational epitopes. This
341 increased sensitivity was not obtained at the expense of cross-reactivity, since the specificity
342 of the novel Luminex assay was 99%, in spite of including sera typically prone to cross-
343 reactivity (i.e. from individuals with documented infection with other viruses, including
344 coronaviruses or with lupus). Overall, the underestimation of SARS-CoV-2 seropositive
345 individuals was less important in the ‘Positive RT-PCR patients’ group ranging from 1 to 26%.
346 A recent study²² has shown that 40% of asymptomatic individuals became seronegative over
347 time. However, an assays detecting anti-N antibodies was used in this study. Based on our
348 results demonstrating a waning of anti-N antibody response in the post-infection phase, it is
349 likely that the loss of antibody response observed is due to the use of the anti-N assay rather
350 than to a disappearance of the SARS-CoV-2 antibody response.

351 Additionally, the Luminex S protein trimer assay provides quantitative levels of anti-S protein
352 IgG antibodies in donor sera, which may correlate with an effective neutralizing activity and
353 the duration of a protective humoral response. Given that N protein antibodies are not
354 neutralizing, this same correlation with N protein assays would be indirect at best and
355 potentially misleading given our demonstration that antibody responses to N wane in post-
356 infection subjects.

357 In addition to seroprevalence population studies, the use of a highly sensitive test is also
358 important for patient care and diagnostic tests should exhibit high performance also during
359 the post-infection period. In this regard, a number of late complications have been reported
360 following SARS-CoV-2 infection, including Guillain-Barré syndrome, Kawasaki syndrome, hair
361 losses, thrombo-embolic events and all these late events are recognized indications for
362 serological testing^{19,23}. Highly sensitive tests are also warranted for immunocompromised
363 subjects suffering from hematological malignancies (lymphoma or leukemia) who may fail to
364 develop any antibody response up to 38 days post-infection despite severe disease requiring
365 prolonged intubation and artificial ventilation in the intensive-care unit²⁴.

366 Furthermore, the availability of highly sensitive serological assay quantifying anti-S protein
367 IgG antibodies together with assays measuring neutralizing antibodies are critical for the
368 development of effective vaccines against SARS-CoV-2.

369 In conclusion, these results provide new insights in the evolution of the SARS-CoV-2 antibody
370 response from the acute to the post-infection phase and indicate that the detection of
371 antibody responses against the S protein and the use of trimeric S protein should be
372 implemented as reference test to avoid large underestimation of SARS-CoV-2 infections in
373 population-based seroprevalence studies.

374 Therefore, the detection of antibody responses against the S protein and the use of trimeric
375 S protein as antigenic target should be implemented as reference test to provide the best
376 estimates of SARS-CoV-2 infections in seroprevalence population studies.

377

378

379

380

381

382

383

384

385

386

387

388

389

390

391

392

393

394

395

396

397

398

399

400

401 **Material and Methods**

402

403 **Study populations**

404

405 **Patients with acute infections**

406 Comparison of tests for acute/sub-acute phase of the infection was performed on 161 sera,
407 including i) 96 sera, expected to be positive, sampled from hospitalized patients with severe
408 to mild symptoms 0 to 45 days post onset of the symptoms and documented with a positive
409 SARS-CoV-2 RT-PCR ; ii) 65 sera, expected to be negative, sampled before November 2020,
410 presented as pre-COVID-19 sera, and including 18 samples from patient documented positive
411 for a Human coronavirus (E229, OC43, HKU1, NL63) RT-PCR. Date of the symptoms onset were
412 extracted from the electronic record of the 96 SARS-CoV-2 RT-PCR positive patients.

413

414 **Post-infection cohort**

415 A second comparison of tests was performed on sera from the seroprevalence study of the
416 Vaud Canton in Switzerland (SerocoViD) performed by the Centre for Primary Care and Public
417 Health, University of Lausanne (Unisanté). Out of the 1,942 participants who provided a blood
418 sample between May 4 and June 27, 2020, a subset of 578 subjects were included in the
419 present analysis, of which: i) 90 subjects were expected to be positive—sampled from mostly
420 mildly to paucisymptomatic patients (only 21% had been hospitalized) documented with a
421 positive SARS-CoV-2 RT-PCR ; ii) 177 were sampled from contacts of RT-PCR positive subjects,
422 and iii) 311 were randomly selected subjects in the general population. There were 304
423 women (52.6%), and the mean age was 39.2 years (SD 24.2, range: 6 months to 90 years).

424

425 **Pre-COVID-19 pandemic donors**

426 Negative control serum samples from 256 adult healthy donors with ages ranging for 18 to 81
427 years of age were collected prior to November 2019 as part of the Swiss Immune Setpoint
428 study sponsored by Swiss Vaccine Research Institute. Specificity tests for the Luminex S-
429 protein assay with a diverse set of 108 patient sera included the 65 sera collected prior to
430 November 2019 and used in the blinded tested performed with all six assays and an additional
431 43 patient samples. This diverse set of samples consisted of sera from pregnant women
432 (n=14), pre-pandemic coronavirus infected donors (OC43, E229, NL63 and HKU1; n=19),

433 patients with infectious diseases (HIV, Rubella, HSV1, HSV2, CMV, EBV, influenza and varicella;
434 n=57) and patients with autoimmune diseases including Lupus (n=18). Study design and use
435 of subject sera samples were approved by the Institutional Review Board of the Lausanne
436 University Hospital and the 'Commission d'éthique du Canton de Vaud' (CER-VD) stated that
437 authorization was not required.

438

439 **Preparation of Luminex beads**

440 Luminex beads used for the serological binding assays were prepared by covalent coupling of
441 SARS-CoV-2 proteins with MagPlex beads using the manufacture's protocol with a Bio-Plex
442 Amine Coupling Kit (Bio-Rad, France). Briefly, 1 ml of MagPlex-C Microspheres (Luminex)
443 were washed with wash buffer and then resuspended in activation buffer containing a freshly
444 prepared solution of 1-ethyl-3-(3-dimethylaminopropyl) carbodiimide (EDC) and N-
445 hydroxysulfosuccinimide (S-NHS), (ThermoFischer, USA). Activated beads were washed in PBS
446 followed by the addition of 50 µg of protein antigen. The coupling reaction was performed
447 at 4 °C overnight with bead agitation using a Hula-Mixer (ThermoFischer). Beads were then
448 washed with PBS, resuspended in blocking buffer then incubated for 30 minutes with
449 agitation at room temperature. Following a final PBS washing step, beads were resuspended
450 in 1.5 ml of storage buffer and kept protected from light in an opaque tube at 4 °C. Each of
451 the SARS-CoV-2 proteins was coupled with different coloured MagPlex beads so that tests
452 could be performed with a single protein bead per well or in a multiplexed Luminex serological
453 binding assay.

454

455 **SARS-CoV-2 proteins evaluated in Luminex assay**

456 The S protein trimer was designed to mimic the native trimeric conformation of the protein
457 in vivo and the expression vector was kindly provided by Prof. Jason McLellan, University of
458 Texas, Austin; ²⁵. It encoded the prefusion ectodomain of the SARS-CoV-2 Spike with a C-
459 terminal T4 foldon fusion domain to stabilize the trimer complex along with C-terminal 8x His
460 and 2x Strep tags for affinity purification. The trimeric Spike protein was transiently expressed
461 in suspension-adapted ExpiCHO cells (Thermo Fisher) in ProCHO5 medium (Lonza) at 5 x10⁶
462 cells/mL using PEI MAX (Polysciences) for DNA delivery. At 1 h post-transfection, dimethyl
463 sulfoxide (DMSO; AppliChem) was added to 2% (v/v). Following a 7-day incubation with
464 agitation at 31 °C and 4.5% CO₂, the cell culture medium was harvested and clarified using a

465 0.22 μ m filter. The conditioned medium was loaded onto Streptactin (IBA) and StrepTrap HP
466 (Cytiva) columns in tandem, washed with PBS, and eluted with 10 mM desthiobiotin in PBS.
467 The purity of S protein trimer was determined to be > 99% pure by SDS-PAGE analysis.

468

469 Receptor binding domain (RBD) and S1 SARS-CoV-2 proteins were prepared as previously
470 described²⁶. In initial characterization of the assays, serum dilutions of 1/50 down to 1/ 2'700
471 were evaluated for SARS-CoV-2 PCR-positive subjects and healthy donors. A 1/300 dilution
472 of serum was selected for screening patient samples since it showed a high MFI signal for all
473 donors and a low background staining with serum samples from pre-COVID-19 pandemic
474 healthy donors. In addition to the high positive signal and low background, <1 μ l of serum was
475 needed to evaluate anti-SARS-CoV-2 antibody binding in the Luminex assay binding assays.

476

477 **Luminex anti-SARS-CoV-2 antibody binding assay**

478 Luminex beads coupled with the Spike, RBD or S1 proteins were diluted 1/100 in PBS with 50
479 μ l added to each well of a Bio-Plex Pro 96-well Flat Bottom Plates (Bio-Rad). Following bead
480 washing with PBS on a magnetic plate washer (MAG2x program), 50 μ l of individual serum
481 samples diluted at 1/300 in PBS, were added to the plate wells. Along with samples, three
482 replicates of a 1/300 negative control pool of pre-COVID-19 pandemic healthy human sera
483 (BioWest human serum AB males; VWR) were evaluated on each 96-well plate. Plates were
484 sealed with adhesive film, protected from light with a dark cover and agitated at 500 rpm for
485 60 minutes on a plate shaker. Beads were then washed on the magnetic plate washer and
486 anti-human IgG-PE secondary antibody (OneLambda ThermoFisher) was added at a 1/100
487 dilution with 50 μ l per well. Plates were agitated for 45 minutes, and then washed on the
488 magnetic plate washer. Beads resuspended in 80 μ l of reading buffer were agitated 5 minutes
489 at 700 rpm on the plate shaker then read directly on a Luminex FLEXMAP 3D plate reader
490 (ThermoFisher). MFI signal for each test serum samples was divided by the mean signal for
491 the negative control samples to yield an MFI ratio that normalized values between plates and
492 between different Luminex instruments tested.

493

494 **Immunoassays**

495 ELISA and CLIA were performed according to the manufacturers' instructions. EuroImmun and
496 Epitope Diagnostic IgG ELISA were done manually for the essential of the protocol at the

497 exclusion of washing steps performed with a microplate washer (PW40, Bio-Rad, France).
498 Lecture of the Optical densities (OD) was done with a microplate reader (800 TSI, BioTek,
499 USA). Each sample was measured in duplicates. The LIAISON® SARS-CoV-2 IgG kit was
500 performed on a Liaison® XL (Diasorin, Italy), and the MAGLUMI™ 2019-nCoV IgG and IgM kits
501 were performed on a MAGLUMI™ 800 (Snibe, China). The Elecsys anti-SARS-CoV-2 was
502 performed on a COBAS 6000 (Roche, Switzerland).

503

504 **Statistical analyses**

505

506 The sensitivity of the different tests was calculated according to day post-symptoms on
507 expected positive sera taken from patients with a positive RT-PCR. The RT-PCR was previously
508 performed according to Corman et al.²⁷ on our automated molecular diagnostic platform ²⁸.

509

510 Sensitivity and specificity of the tests with 95% CI (Wilson/Brown method of GraphPad Prism
511 8.3.0) were calculated with Excel and GraphPad prism. For comparisons between the Luminex
512 assay and the five other serological assays, R² values were calculated using the Pearson test
513 and the McNemar's test was used to determine the p-value significant differences for
514 sensitivities in detecting seropositive subjects in the patient subsets within the post-infection
515 cohort. All statistics were done with GraphPad prism.

516

517

518

519

520

521

522

523

524

525

526

527

528

529

530

531

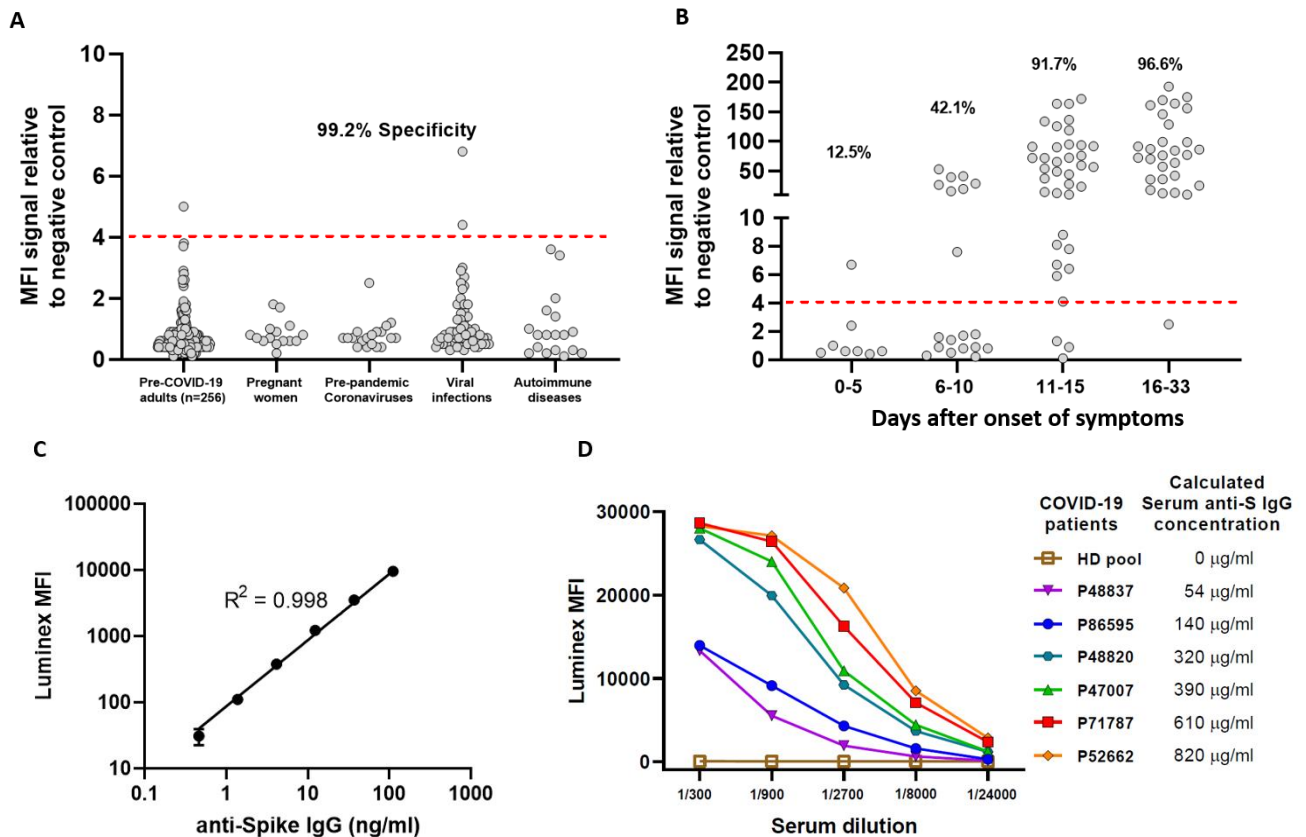
532

533

534

535
536
537

Figures and Figure legends



538

539

540

541

542

543

544

545

546

547

548

549

550

551

552

553

554

555

556

557

558

559

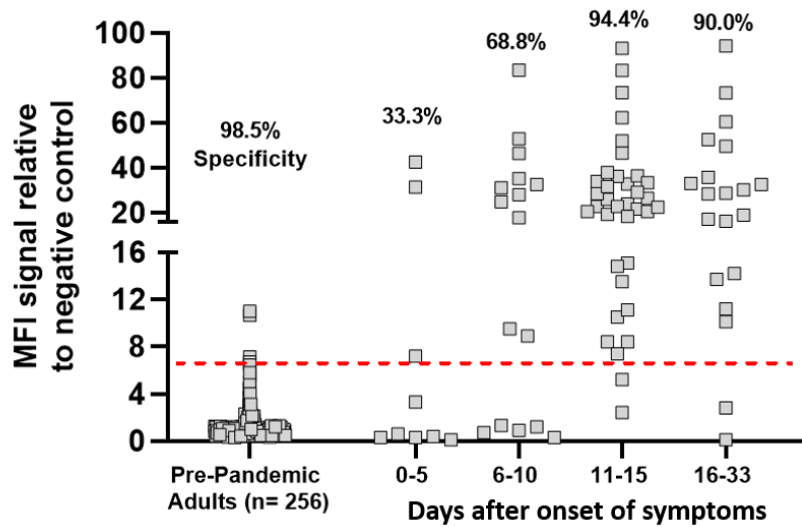
560

561

562

Figure 1: Specificity and sensitivity of IgG antibody binding to the SARS-CoV-2 S protein trimer in a Luminex binding assay. Luminex beads covalently coupled with SARS-CoV-2 S protein trimer were used to monitor IgG binding in assays performed with pre-COVID-19 pandemic negative control sera and sera from SARS-CoV-2 PCR positive donors. MFI signals for serum antibody binding was expressed as a ratio compared to a negative control pool of pre-COVID-19 pandemic human serum tested in parallel. **A**) Assay specificity was evaluated using the sera from pre-COVID-19 pandemic healthy adults (n=256; ages ranging between 18 to 81 years of age), pregnant woman, pre-pandemic coronavirus infected donors (OC43, E229, NL63 and HKU1), patients with infectious diseases (HIV, Rubella, HSV1, CMV, EBV, influenza and varicella) and patients with autoimmune diseases including Lupus. **B**) The sensitivity of the S protein trimer Luminex assays was evaluated with sera from acute infected SARS-CoV-2 PCR-positive donors at 0-5 days, 6-10 days, 11-15 days and 16-33 days post-onset of symptoms. The red dashed line in A and B corresponds to the 4.0 cut-off for positivity in the IgG Luminex assay that was established by using mean value + 4×SD of all 364 pre-COVID-19 pandemic serum samples shown in A. **C**) Quantitation of anti-S protein IgG antibody levels was performed by generating a standard curve for binding using the CR3022 IgG1 antibody that binds SARS-CoV-2 S protein. **D**) Using multiple dilutions of sera from COVID-19 patients, MFI signals between 100 and 10'000 in the linear part of the standard curve were used to calculate the serum concentration of anti-S protein IgG antibodies.

563



564

565

566 **Figure 2: Specificity and sensitivity of IgA antibody binding to the SARS-CoV-2 S protein**
567 **trimer in a Luminex binding assay.** The Luminex S protein trimer assay was used to monitor
568 IgA binding of antibodies in sera from pre-COVID-19 pandemic negative control donors and
569 sera from acute SARS-CoV-2 PCR positive donors. The Luminex assay exhibited high specificity
570 of 98.5% against a cohort of negative control donors and was effective at detecting IgA
571 antibodies specific for S protein in most subjects in both the early stage (0 to 10 days) and
572 later stage (11 to 33 days) after onset of symptoms in acute PCR-positive patients. The red
573 dashed line corresponds to 6.5-fold MFI signal over the internal negative control and was
574 established by using the mean value + 4×SD of the 256 pre-COVID-19 pandemic adult serum
575 samples.

576

577

578

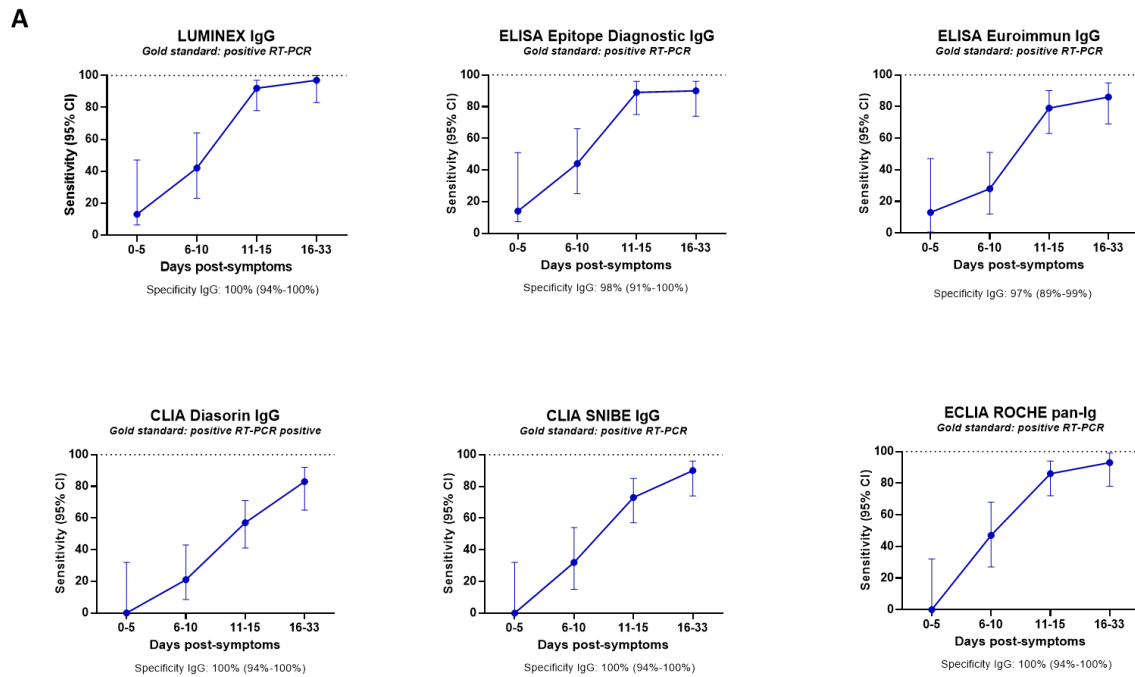
579

580

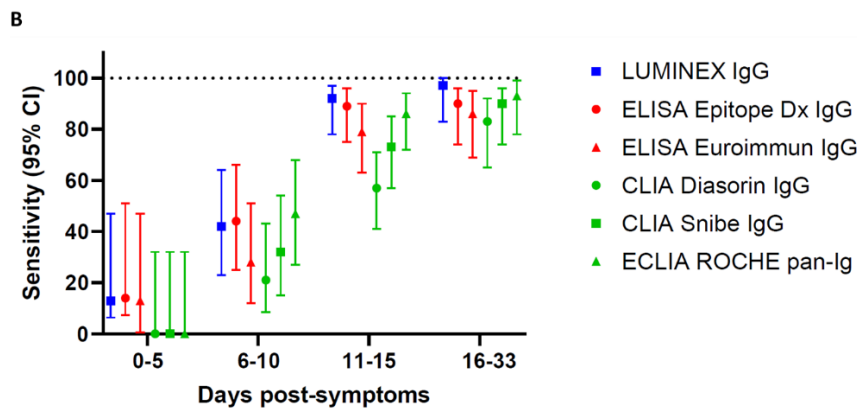
581

582

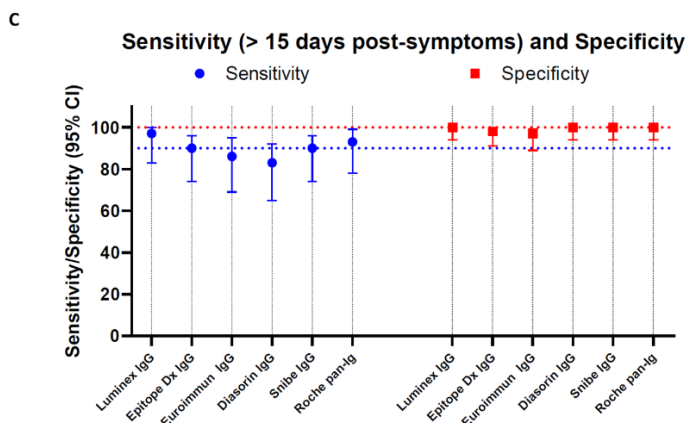
583



584



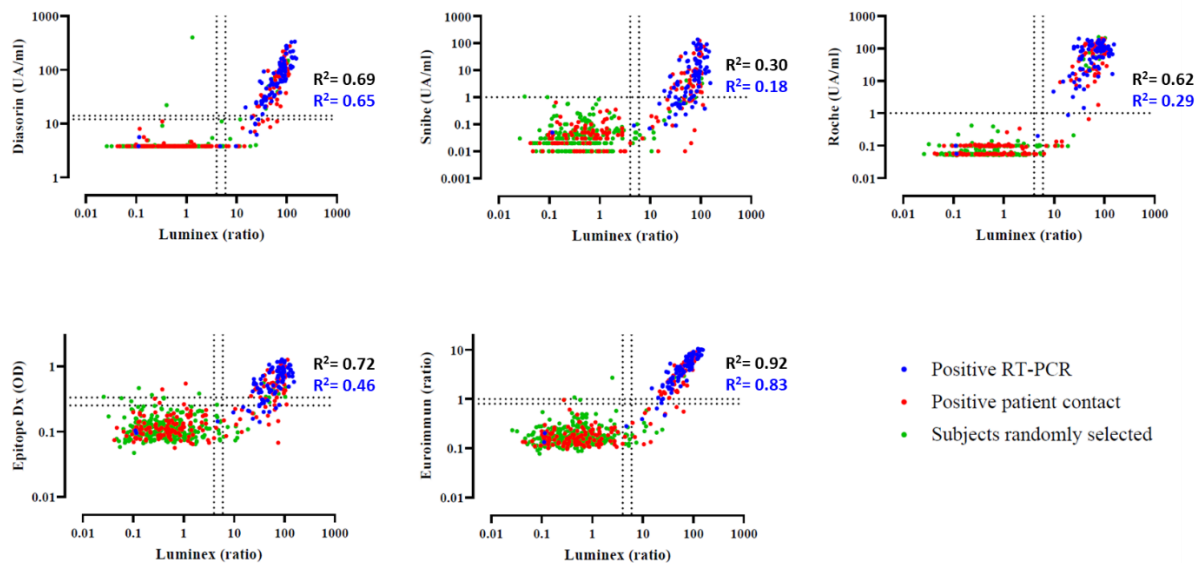
585



586

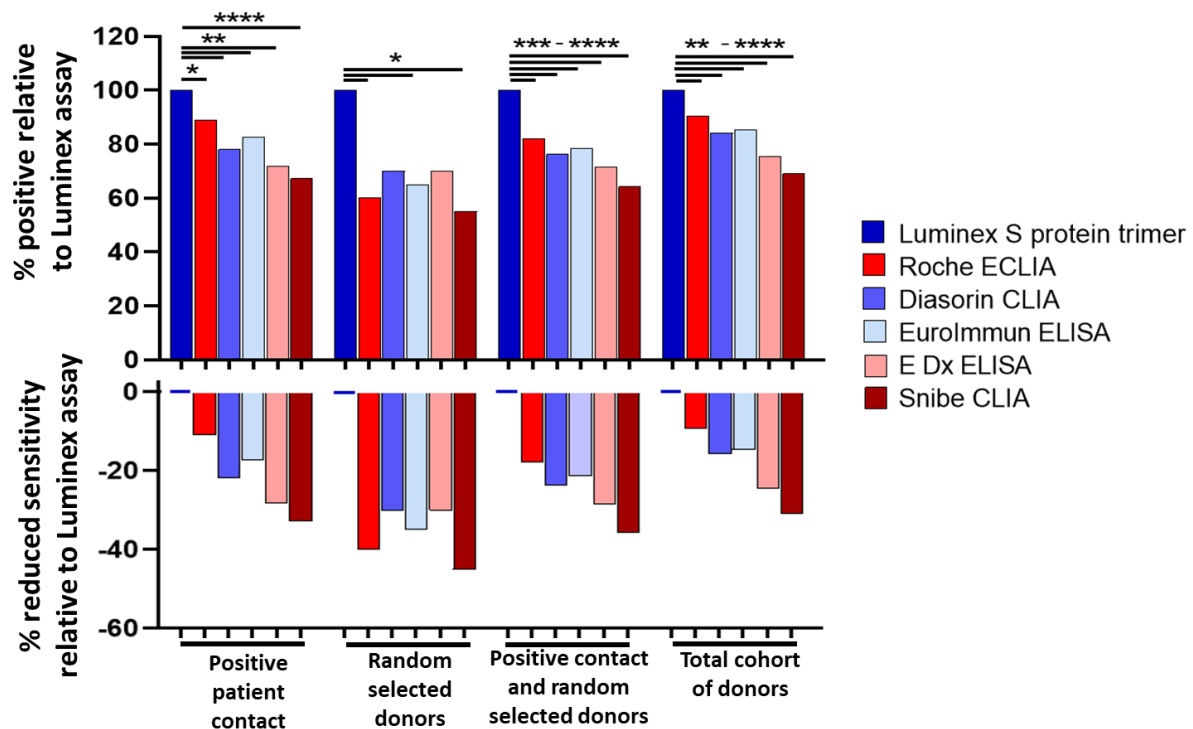
587 **Figure 3: Comparative analysis of six different SARS-CoV-2 serological assays in the profiling**
 588 **of sera from acutely infected patients.** Sensitivity in detecting anti-SARS-CoV-2 specific IgG
 589 antibodies is compared for our new Luminex S protein trimer assay and five other commercial
 590 assay. **A-B)** Serum samples were grouped by the number of days after initial onset of
 591 symptoms with sensitivity increasing in all assays with increased days post-symptom onset.
 592 **C)** In the 16 to 33 days post-symptom group, the Luminex assay is among the most sensitive
 593 and specific assays.

594
595
596



597
598
599
600
601
602
603
604
605
606
607
608
609
610
611
612

Figure 4: Comparative analysis of Luminex S protein trimer assay versus five commercial serological assays. Signal intensities for the different subject sera in the post-infection cohort were compared between the Luminex and the five other serological assays. Collected sera were from patients with a documented positive SARS-CoV-2 RT-PCR (90 sera; blue dots), contacts with a SARS-CoV-2 RT-PCR positive patient (177 sera; red dots) and participants randomly selected from the general population (311 sera; green dots). Pearson correlation R^2 values are given for all 578 participants (black text) or for 183 Luminex positive sera (blue text).



613
614
615
616
617
618
619
620
621
622
623
624
625
626
627
628
629
630
631
632
633
634
635
636
637
638
639
640
641

Figure 5: The Luminex S protein trimer assay has significantly increased sensitivity relative to five other commercial assays in detecting seropositive subjects in the post-infection settings. Analysis shows the percentage seropositive subjects relative to the Luminex assay (top) and the percentage of reduced sensitivity relative to the Luminex assay (bottom) which had the best performance in all subsets of participants. Assays with blue bars used the S protein as their bait for binding serum antibodies while the red bars used the N protein. Statistical analysis was performed using the McNemar test for matched participant samples where $P < 0.045$ (*); $P < 0.0022$ (**); $P < 0.0009$ (***) ; $P \leq 0.0001$ (****).

642 **Table 1:** Performance of the serological tests on sera collected during the acute infectious
 643 stage from hospitalized patients with moderate to severe symptoms
 644

Test	Days post-symptoms	N° sera from patients RT-PCR pos		IgG** Se	IgG** Se 95% CI	N° sera pre-COVID*		IgG** Sp	IgG** Sp 95% CI
		Total	Positive in serology			Total	Positive in serology		
Luminex	All	94	71	0.76	0.66 to 0.83	65	0	1	0.94 to 1.0
	0-5	8	1	0.13	0.0064 to 0.47				
	6-10	19	8	0.42	0.23 to 0.64				
	11-15	36	33	0.92	0.78 to 0.97				
	16-33	29	28	0.97	0.83 to 1.0				
ELISA Epitope Dx	All	93	68	0.73	0.63 to 0.81	65	1	0.98	0.92 to 1.0
	0-5	7	1	0.14	0.0073 to 0.51				
	6-10	18	8	0.44	0.25 to 0.66				
	11-15	36	32	0.89	0.75 to 0.96				
	16-33	29	26	0.89	0.74 to 0.96				
ELISA Euroimmun	All	91	58	0.64	0.53 to 0.73	65	2	0.97	0.90 to 0.99
	0-5	8	1	0.13	0.0064 to 0.47				
	6-10	18	5	0.28	0.12 to 0.51				
	11-15	34	27	0.79	0.63 to 0.90				
	16-33	29	25	0.86	0.69 to 0.95				
CLIA Diasorin	All	96	49	0.51	0.41 to 0.61	65	0	1	0.95 to 1.0
	0-5	8	0	0	0.0 to 0.32				
	6-10	19	4	0.21	0.085 to 0.43				
	11-15	37	21	0.57	0.41 to 0.71				
	16-33	29	24	0.83	0.65 to 0.92				
CLIA Suiabe	All	96	60	0.63	0.53 to 0.72	65	0	1	0.95 to 1.0
	0-5	8	0	0	0.0 to 0.32				
	6-10	19	6	0.32	0.15 to 0.54				
	11-15	37	27	0.73	0.57 to 0.85				
	16-33	29	26	0.9	0.74 to 0.96				
ECLIA Roche	All	96	68	0.73	0.62 to 0.80	65	0	1	0.95 to 1.0
	0-5	8	0	0	0.0 to 0.32				
	6-10	19	9	0.47	0.27 to 0.68				
	11-15	37	32	0.86	0.72 to 0.94				
	16-33	29	27	0.93	0.78 to 0.99				

Se : sensitivity ; Sp : specificity ; * serum sampled before 1st November 2019 considered as “negative”; **IgG, except for the ECLIA Roche, which corresponds to a pan-Ig assay

645
 646
 647
 648
 649
 650
 651
 652
 653
 654
 655
 656
 657
 658
 659
 660
 661
 662
 663
 664
 665
 666
 667

668 **Table 2.** Performance of the IgA serological tests on 81 sera collected during the acute
 669 infectious stage from hospitalized patients with moderate to severe symptoms
 670

Test	Days post-symptoms	N° sera from patients RT-PCR pos		Ig Se	Ig Se 95% CI
		Total	Positive in serology		
Luminex IgG	All	81	61	0.75	0.65 to 0.83
	0-5	9	1	0.11	0.006 to 0.44
	6-10	16	7	0.44	0.23 to 0.67
	11-15	36	33	0.92	0.78 to 0.97
	16-33	20	20	1	0.839 to 1
Luminex IgA	All	81	66	0.81	0.72 to 0.88
	0-5	9	3	0.33	0.12 to 0.65
	6-10	16	11	0.69	0.444 to 0.858
	11-15	36	34	0.94	0.819 to 0.990
	16-33	20	18	0.9	0.699 to 0.982
ELISA EuroImmun IgG	All	81	49	0.6	0.5 to 0.7
	0-5	9	1	0.11	0.006 to 0.44
	6-10	16	5	0.31	0.14 to 0.56
	11-15	36	25	0.69	0.53 to 0.82
	16-33	20	18	0.9	0.7 to 0.98
ELISA EuroImmun IgA	All	81	61	0.75	0.65 to 0.83
	0-5	9	2	0.22	0.039 to 0.55
	6-10	16	10	0.63	0.39 to 0.82
	11-15	36	31	0.86	0.71 to 0.94
	16-33	20	18	0.9	0.7 to 0.98

Se : sensitivity ; Sp : specificity

671
 672
 673
 674
 675
 676
 677
 678
 679
 680
 681
 682
 683
 684
 685
 686
 687
 688
 689
 690
 691
 692
 693
 694
 695
 696

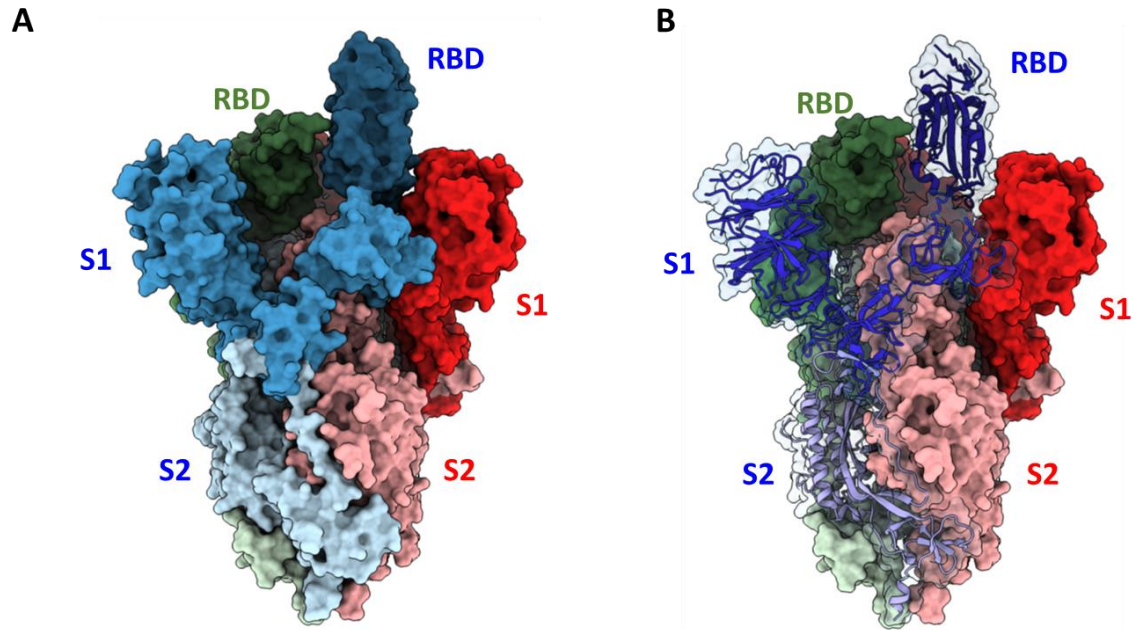
697 **Table 3:** Percentage of positive/negative/limit results of the different tests on sera collected
 698 from patients with a documented positive SARS-CoV-2 RT-PCR (90 sera), contacts with a SARS-
 699 CoV-2 RT-PCR positive patient (177 sera) and subjects randomly selected from the general
 700 population (311 sera).

701
702
703
704

	Luminex (anti-S trimer)						Diasorin (anti-S)						EuroImun (anti-S)					
	Positive RT-PCR		Patient positive contacts		Subjects randomly selected		Positive RT-PCR		Patient positive contacts		Subjects randomly selected		Positive RT-PCR		Patient positive contacts		Subjects randomly selected	
	%	N	%	N	%	N	%	N	%	N	%	N	%	N	%	N	%	N
Positive	96.7	87	36.2	64	6.4	20	88.9	80	28.2	50	4.5	14	88.9	80	29.9	53	4.2	13
Negative	2.2	2	62.7	111	90.7	282	8.9	8	70.6	125	95.2	296	6.7	6	68.9	122	94.9	295
Limit	1.1	1	1.1	2	2.9	9	2.2	2	1.1	2	0.3	1	4.4	4	1.1	2	1.0	3

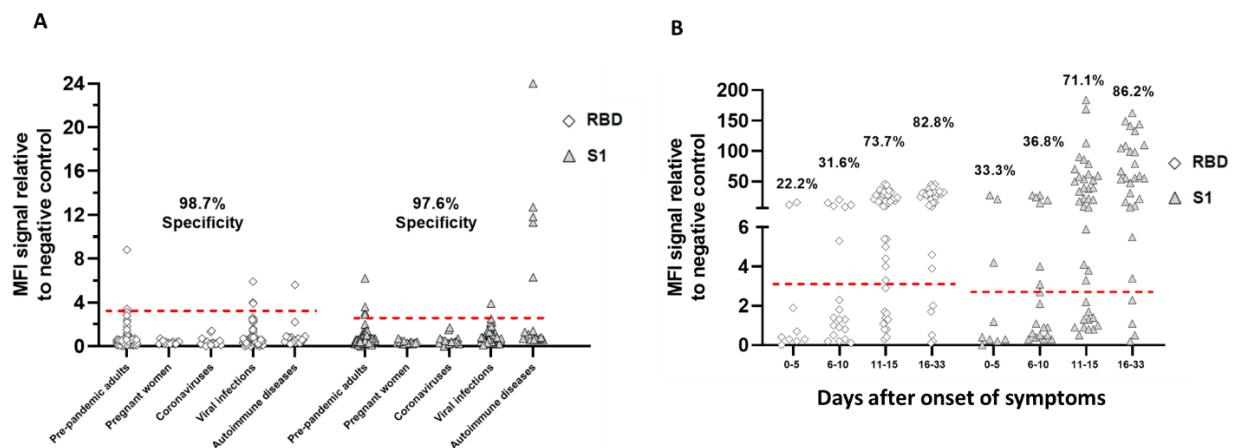
	Roche (anti-N)						Epitope Dx (anti-N)						Snibe (anti-S + N)					
	Positive RT-PCR		Patient positive contacts		Subjects randomly selected		Positive RT-PCR		Patient positive contacts		Subjects randomly selected		Positive RT-PCR		Patient positive contacts		Subjects randomly selected	
	%	N	%	N	%	N	%	N	%	N	%	N	%	N	%	N	%	N
Positive	95.6	86	32.2	57	3.9	12	76.7	69	26.0	46	4.5	14	71.1	64	24.3	43	3.5	11
Negative	4.4	4	67.8	120	96.1	299	17.8	16	70.6	125	93.6	291	28.9	26	75.7	134	96.5	300
Limit	0.0	0	0.0	0	0.0	0	5.6	5	3.4	6	1.9	6	0.0	0	0.0	0	0.0	0

705
706
707
708
709
710
711
712
713
714
715
716
717
718
719
720
721
722
723
724
725
726
727
728
729



730
731
732
733
734
735
736
737
738
739
740
741
742
743
744
745
746
747
748
749
750

Supplementary Figure 1: Structural representation of the SARS-CoV-2 S protein Trimer. A) Space filled representation of the S protein with trimer subunits shown in blue, red and green. The labeled S2, S1 and RBD portions of each subunit are in light, mid and dark colors, respectively. Compared to the monomeric S1 protein, this image demonstrates that the native S protein trimer has significantly greater conformational for antibody binding with epitopes that are only present in the higher order structure. B) S protein trimer with the blue subunit represented as a ribbon structural. The 6VSB PDB structure was used to generate these images.



751
752

753 **Supplementary Figure 2:** Specificity and sensitivity of IgG antibody binding to the SARS-CoV-
754 2 RBD and S1 domains in a Luminex binding assay. A) Specificity of the Luminex RBD and S1
755 protein monomer binding assays was assessed using the cohort of negative control sera
756 described in Figure 1A. B) Sensitivity of the Luminex RBD and S1 protein monomer binding
757 assays was determined with the 94 acute infected serum samples described in Figure 1B. The
758 cut-off for positivity used in the RBD and S1 Luminex IgG assays are 3.2- and 2.8-fold over the
759 negative control, respectively and were established by using mean value + 4×SD of each for
760 the 364 pre-COVID-19 pandemic serum samples in A.

761

762

763

764 **Acknowledgements**

765 We would like to thank the Service of Immunology and Allergy and Service of Microbiology at
766 the Lausanne University Hospital for their contributions in analysis of subject serum samples.
767 Additionally, we would like to thank Laurence Durrer and Soraya Quinche from PTPSP-EPFL
768 for mammalian cell culture; and Luciano Abriata from PTPSP-EPFL for helping in purification
769 of the S protein trimer. We would also like to thank Professor Federica Sallusto from the
770 Institute for Research in Biomedicine in Bellinzona, Switzerland for her assistance in cross
771 validating the sensitivity and specificity of the Luminex S protein trimer assay by an
772 independent laboratory. Funding for this project was provided through the Lausanne
773 University Hospital, through the Swiss Vaccine research institute and through the Coronavirus
774 Accelerated R&D in Europe (CARE) IMI project.

775

776 **Author contributions**

777 A.C and A.T.C. organized the testing of serum samples in the five commercial serological
778 assays and contributed to data analysis and manuscript preparation; C.A. and C.P. organized
779 the testing of sera with the Luminex assay and solidified the testing protocol into a robust
780 diagnostics assay; A.F. prepared all batches protein coupled Luminex beads and performed
781 validation studies along with J.C.; D.T., F.P., D.H. and K.L. produced and purified the S protein
782 trimer; B.-J.B. provided the S1 and RBD monomeric proteins; V.D'A., S.G.N. and M.B. were in
783 charge of the Vaud post-infection cohort and performed the initial unblinded analysis; C.F.
784 conceived of and designed the Luminex assays, the quantitative analysis strategies and
785 contributed to data analysis and manuscript writing. D.T., G.G. and G.P. conceived the study
786 design for testing of sera from acute and post-infection subjects and wrote the manuscript.

787 **References:**

- 788
- 789 1. WHO. Coronavirus disease (COVID-2019) situation reports -175. Vol. July 12th, 2020 (2020).
- 790 2. Norheim, O.F. Protecting the population with immune individuals. *Nat Med* **26**, 823-824
- 791 (2020).
- 792 3. Phelan, A.L. COVID-19 immunity passports and vaccination certificates: scientific, equitable,
- 793 and legal challenges. *Lancet* **395**, 1595-1598 (2020).
- 794 4. Weitz, J.S., *et al.* Modeling shield immunity to reduce COVID-19 epidemic spread. *Nat Med*
- 795 **26**, 849-854 (2020).
- 796 5. Li, G., Chen, X. & Xu, A. Profile of specific antibodies to the SARS-associated coronavirus. *N*
- 797 *Engl J Med* **349**, 508-509 (2003).
- 798 6. Zhao, J., *et al.* Antibody responses to SARS-CoV-2 in patients of novel coronavirus disease
- 799 2019. *Clin Infect Dis* (2020).
- 800 7. Meyer, B., Drosten, C. & Muller, M.A. Serological assays for emerging coronaviruses:
- 801 challenges and pitfalls. *Virus Res* **194**, 175-183 (2014).
- 802 8. Coste, A.T., Jatou, K., Papadimitriou-Olivgeris, M., Greub, G. & Croxatto, A. Comparison of
- 803 SARS-CoV-1 2 serological tests with different antigen targets. *medRxiv* (2020).
- 804 9. Chia, W.N., *et al.* Serological differentiation between COVID-19 and SARS infections. *Emerg*
- 805 *Microbes Infect* **9**, 1497-1505 (2020).
- 806 10. Cao, W.C., Liu, W., Zhang, P.H., Zhang, F. & Richardus, J.H. Disappearance of antibodies to
- 807 SARS-associated coronavirus after recovery. *N Engl J Med* **357**, 1162-1163 (2007).
- 808 11. Choe, P.G., *et al.* MERS-CoV Antibody Responses 1 Year after Symptom Onset, South
- 809 Korea, 2015. *Emerg Infect Dis* **23**, 1079-1084 (2017).
- 810 12. Wu, L.P., *et al.* Duration of antibody responses after severe acute respiratory syndrome.
- 811 *Emerg Infect Dis* **13**, 1562-1564 (2007).
- 812 13. Payne, D.C., *et al.* Persistence of Antibodies against Middle East Respiratory Syndrome
- 813 Coronavirus. *Emerg Infect Dis* **22**, 1824-1826 (2016).
- 814 14. Xiaoqin Guo, X., *et al.* Long-Term Persistence of IgG Antibodies in SARS-CoV Infected
- 815 Healthcare Workers. *medRxiv* (2020).
- 816 15. Yuan, M., *et al.* A highly conserved cryptic epitope in the receptor binding domains of SARS-
- 817 CoV-2 and SARS-CoV. *Science* **368**, 630-633 (2020).
- 818 16. Stringhini, S., *et al.* Seroprevalence of anti-SARS-CoV-2 IgG antibodies in Geneva,
- 819 Switzerland (SEROCoV-POP): a population-based study. *Lancet* (2020).
- 820 17. Gobierno de España, Ministerio de Sanidad. Estudio ENE-COVID19: primera ronda. Estudio
- 821 nacional de sero-epidemiología de la infección por SARS-CoV-2 en España.
- 822 18. Saplakoglu, Y. 1 in 5 people tested in New York City had antibodies for the coronavirus. .
- 823 *LiveScience* (2020).
- 824 19. Coste, A.T., Jatou, K., Papadimitriou-Olivgeris, M., Croxatto, A. & Greub, G. Indication for
- 825 SARS-CoV-2 serology: first month follow-up. *medRxiv* (2020).
- 826 20. Montesinos, I., *et al.* Evaluation of two automated and three rapid lateral flow immunoassays
- 827 for the detection of anti-SARS-CoV-2 antibodies. *J Clin Virol* **128**, 104413 (2020).
- 828 21. Kohmer, N., Westhaus, S., Ruhl, C., Ciesek, S. & Rabenau, H.F. Brief clinical evaluation of
- 829 six high-throughput SARS-CoV-2 IgG antibody assays. *J Clin Virol* **129**, 104480 (2020).
- 830 22. Long, Q.X., *et al.* Clinical and immunological assessment of asymptomatic SARS-CoV-2
- 831 infections. *Nat Med* (2020).
- 832 23. Greub, G., Coste, A.T. & Croxatto, A. Sérologie SARS-CoV-2: quand la prescrire? *Pipette -*
- 833 *Swiss Laboratory Medicine*, 14-15 (2020).
- 834 24. Longchamp, A., *et al.* Serum antibody response in critically ill patients with COVID-19.
- 835 *Intensive Care Med* (2020).
- 836 25. Wrapp, D., *et al.* Cryo-EM Structure of the 2019-nCoV Spike in the Prefusion Conformation.
- 837 *bioRxiv* (2020).
- 838 26. Okba, N.M.A., *et al.* Severe Acute Respiratory Syndrome Coronavirus 2-Specific Antibody
- 839 Responses in Coronavirus Disease Patients. *Emerg Infect Dis* **26**, 1478-1488 (2020).
- 840 27. Corman, V.M., *et al.* Detection of 2019 novel coronavirus (2019-nCoV) by real-time RT-PCR.
- 841 *Euro Surveill* **25**(2020).
- 842 28. Greub, G., Sahli, R., Brouillet, R. & Jatou, K. Ten years of R&D and full automation in
- 843 molecular diagnosis. *Future Microbiol* **11**, 403-425 (2016).
- 844
- 845