

Impact of COVID-19 on 2020 US life expectancy for the Black and Latino populations

July 12, 2020

Theresa Andrasfay, Ph.D.
Noreen Goldman, D.Sc.

Office of Population Research
Princeton University

Corresponding Author: Theresa Andrasfay (theresaa@princeton.edu)

Funding

Research reported in this publication was supported by The Eunice Kennedy Shriver National Institute of Child Health & Human Development of the National Institutes of Health under Award Number P2CHD047879. The content is solely the responsibility of the authors and does not necessarily represent the official views of the National Institutes of Health.

Impact of COVID-19 on 2020 US life expectancy for the Black and Latino populations

Abstract

The Black and Latino populations have experienced a disproportionate burden of COVID-19 morbidity and mortality, reflecting persistent structural inequalities that increase risk of exposure to COVID-19 and risk of death for those infected. According to the National Center for Health Statistics, as of July 4, 2020, deaths to Black and Latino individuals comprised 23% and 17%, respectively, of the approximately 115,000 COVID-19 deaths. COVID-19 mortality is likely to result in a larger decline in life expectancy during 2020 than the US has experienced for decades as well as a particularly large reduction for Black and Latino individuals. We estimate life expectancy at birth and at age 65 for 2020, by race and ethnicity, using four scenarios of deaths – one in which the COVID-19 pandemic had not occurred and three including COVID-19 mortality projections produced by the Institute for Health Metrics and Evaluation. Our most likely estimate indicates a reduction in life expectancy at birth greater than 1.5 years for both the Black and Latino populations, which is one year larger than the reduction for whites. This would imply that the Black-white gap would increase by 30%, from 3.6 to 4.7 years, thereby eliminating progress made in reducing this differential since 2008 and reversing an overall trend of steeper mortality declines among the Black population since the early 1990s. Latinos, who have consistently experienced lower mortality than whites (a phenomenon known as the Latino or Hispanic paradox), would see their survival advantage decline by 36%, equivalent to its magnitude in 2006.

Introduction

Despite concerns about inadequate testing and unreliable data, there is convincing evidence that Black and Latino* Americans experience a disproportionate burden of COVID-19 morbidity and mortality. A plethora of factors likely contribute to these disparities, many of which reflect enduring structural inequalities for the Black and Latino populations that increase both risk of exposure to COVID-19 and risk of death for those infected.

Although the number of deaths from COVID-19 is staggering – approximately 115,000 as of July 4, 2020, of which 23% were Black and 17% Latino (1)[†]– we do not yet know the impact of these deaths on life expectancy or on the racial and ethnic gaps in life expectancy. Life expectancy, a frequently used metric of population health that is typically measured as of birth,[‡] is an informative tool for examining the differential impact of COVID-19 on survival as it is unaffected by the age distribution of the underlying populations. In contrast, for example, comparisons of overall (crude) death rates or proportions of deaths by race and ethnicity are biased by the fact that the Black and Latino populations in the US are younger than the white population and, all else being equal, are likely to have fewer deaths (2, 3).

In the period preceding the COVID-19 pandemic, annual improvements in US life expectancy had been small – e.g., an increase from 76.8 to 79.0 or an average annual increase of 0.16 years between 2000 and 2014 – but only rarely have overall declines been documented (4). Despite their small magnitude, these declines have attracted enormous attention from researchers and the media. Annual reductions of 0.1 year for each of three consecutive years (2015, 2016,

* Unless specified otherwise, throughout this paper we use the terms Hispanic and Latino interchangeably and use the terms Black to refer to non-Hispanic Black, and white to non-Hispanic white.

[†] This death total includes deaths with demographic characteristics (age, race, and ethnicity) that have been reported to and processed by the National Center for Health Statistics as of this date. Therefore, this death count is lower than the death count reported by other sources.

[‡] Throughout this paper, life expectancy refers to life expectancy at birth unless specified at another age.

and 2017) (5–7), attributed partly to increases in “deaths of despair” (8), made repeated headlines as the longest period of decrease since the 1918 Spanish flu pandemic. However, the total magnitude of these declines was miniscule compared to the reduction in life expectancy following the 1918 flu pandemic, estimated to be between 7 and 12 years (9, 10). Conversely, a 0.1-year recovery in life expectancy in 2018 was greeted with relief.

This trend in life expectancy did not characterize all racial and ethnic groups equally: Over the past two decades, Black and Latino individuals experienced larger improvements in life expectancy than whites. As a result, the gap in life expectancy between white and Black Americans narrowed, reducing the Black disadvantage (11, 12). Because Latinos have consistently had higher life expectancy than whites, a phenomenon referred to as the Latino or Hispanic epidemiological paradox, the gap between whites and Latinos grew in recent years, further increasing the Latino mortality advantage (13).

The COVID-19 pandemic will almost certainly bring about a greater reduction in annual life expectancy than the US has experienced in many years, perhaps since the 1918 Spanish flu pandemic. However, the concentration of COVID-19 deaths among the elderly, in contrast to the preponderance of young adult deaths in the previous flu pandemic (14), may mitigate its impact. Regardless of the magnitude of the overall decline in life expectancy, the exceptionally high COVID-19 death rates borne by Black and Latino individuals are likely to bring about greater declines in life expectancy for these populations than for whites, but the pressing question is by how much. In the present analysis, we address this issue by using ongoing data collection of COVID-19 deaths and projections of future deaths under different policy scenarios to estimate how COVID-19 mortality will affect life expectancy at birth and age 65 by race and ethnicity.

We also assess the implications of these projections on the Black disadvantage and the Latino advantage relative to whites.

Data and Methods

Data

We draw on data from multiple sources to calculate projections of period life expectancy in 2020 for the non-Latino white, non-Latino Black, and Latino populations in the United States, excluding Puerto Rico. Counts of deaths involving COVID-19 by race, ethnicity and age group are obtained from the National Center for Health Statistics (NCHS) for deaths through July 4, 2020 (1).[§] The projected total numbers of COVID-19 deaths by November 1, 2020 under three policy and behavioral scenarios are obtained from the Institute for Health Metrics and Evaluation (IHME); the projections used in our calculations were updated July 7, 2020 (15).

Mid-year population counts by race and ethnicity and age are obtained from the US Census Bureau's estimates for 2019, the most recent year for which these population counts are available (16). Estimates of mortality rates and other life table quantities by race, ethnicity and age are taken from the US life tables published by the National Vital Statistics System for the year 2017, the most recent year for which these life tables are available (17). We assume that the 2020 population counts are equivalent to the 2019 population estimates and that the mortality rates for 2020 in the absence of COVID-19 would be equivalent to those observed in 2017.

Methods

We estimate 2020 life expectancy under four scenarios, including one in which the COVID-19 pandemic had not occurred and three IHME projections based on different levels of COVID-19 mortality: the current projection scenario, which we refer to as the most likely

[§] These include all deaths for which the cause of death is ICD-10 code U07.1 (ICD-10 code for COVID-19) regardless of whether the infection was laboratory-confirmed.

scenario, the mandates easing scenario, and the universal mask scenario. These scenarios are further described in the supplementary material. Due to differences in state reporting and incomplete adherence to reporting guidelines, race, ethnicity and age are not available for all deaths involving COVID-19. At present, there are no published projections for the total number of deaths by race and ethnicity. To address these data limitations, we assume that the total projected national number of deaths from COVID-19 will have the same racial, ethnic, and age distribution as the deaths reported to the NCHS with this demographic information.

First, we calculate the expected number of deaths in 2020 in the absence of any COVID-19 mortality by applying the 2017 age-specific mortality rates to the 2019 population counts by age group. Second, we estimate the projected total number of deaths in 2020 by adding the total projected number of deaths from COVID-19 by age group to the expected number of deaths from other causes within each age group. To calculate the expected number of deaths from causes other than COVID-19, we assume that all individuals who do not die of COVID-19 in 2020 are subject to the 2017 age-specific mortality rates. Third, we calculate the age-specific ratio of expected number of deaths in the absence of COVID-19 mortality to the projected total number of deaths in 2020. Using this ratio and standard life table techniques, we then treat the 2017 life table as a cause-deleted life table in which COVID-19 is the cause of death that has been eliminated and recover an all-cause life table that includes deaths from COVID-19; this approach has been used to estimate COVID-19 life expectancy reductions across countries (18). These calculations are done separately for each racial and ethnic group and projection scenario. Additional details on these calculations are provided in the supplementary material.

Results

We present estimated life expectancy values under four projection scenarios in Table 1. These include a scenario in which the COVID-19 pandemic had not occurred and three projections produced by the Institute for Health Metrics and Evaluation (IHME): (1) the current projection scenario, which IHME describes as most likely and estimates approximately 208,000 deaths by November 1; (2) a high mortality scenario assuming continued easing of mandates, which estimates approximately 215,000 deaths by this date; and a low mortality scenario assuming universal mask usage in the population, which estimates approximately 163,000 deaths by this date (15).

Estimated life expectancy values in the absence of COVID-19 and under the most likely projection scenario are displayed in Figure 1, which shows clearly that the projected reductions in life expectancy are much larger for the Black and Latino populations than for whites or the total US population. Compared to the absent COVID-19 scenario, under the most likely scenario, US life expectancy at birth is projected to decline by 0.73 years and white life expectancy by 0.45 years; the corresponding declines for the Black and Latino populations are 1.54 years and 1.65 years, respectively. Racial disparities are also present in remaining life expectancy at age 65, which is projected to decline by 0.58 years for the total US population, 0.43 years for the white population, 1.31 years for the Black population, and 1.23 years for the Latino population.

For the white population, the projected effect of COVID-19 is similar for life expectancy at birth and at age 65; however, for the Black and Latino populations, the projected effect of COVID-19 on life expectancy at birth is notably larger than for life expectancy at age 65, reflecting the higher burden of COVID-19 mortality at younger ages among these groups. These racial and ethnic differences are also revealed by identifying the age groups showing the largest

proportional increases in mortality rates in the presence of COVID-19: 75-85 and 85 and over in the white population, 65-75 and 75-85 in the Black population, and 55-65 and 65-75 in the Latino population (shown in the supplementary materials).

Similar racial and ethnic disparities in life expectancy declines are projected under both of the alternative COVID-19 mortality scenarios. The declines projected under the mandates easing scenario are similar in magnitude to the most likely scenario for all racial and ethnic groups, while the projected declines are substantially reduced under the universal mask scenario, though racial and ethnic disparities in the effect of COVID-19 remain. Under this lower mortality scenario, life expectancy at birth is projected to decline by 0.57 years for the total population, 0.35 years for the white population, 1.22 years for the Black population, and 1.31 years for the Latino population.

To put these projected life expectancy declines in perspective, trends in life expectancy at birth from 1980-2020 are presented in Figure 2 by race and ethnicity. Over this 40-year period, life expectancy has generally increased for all racial and ethnic groups with the exception of small declines in some years. The projected declines in life expectancy due to COVID-19 are larger than any other single-year decline in life expectancy in this time period.

To illustrate the effect of COVID-19 on the racial and ethnic differences in life expectancy at birth, Figure 3 displays the difference in life expectancy for the Black and Latino populations relative to the white population. Following a widening in the late 1980s, the Black-white life expectancy gap has narrowed from 7.1 years in 1993 to 3.6 years in 2017. Under the most likely scenario, the Black-white gap is projected to widen to 4.7 years in 2020, which is roughly the size of the gap in 2008. In contrast, since 2006 (the earliest year for which Latinos are separately identified in Vital Statistics), the Latino population has experienced a growing life

expectancy advantage relative to whites, increasing from an advantage of 2.1 years in 2006 to 3.3 years in 2017. Under the most likely scenario, this advantage is projected to decline to 2.1 years in 2020, which is equivalent to its level in 2006. Under the universal mask scenario, the Black-white gap is projected to widen to 4.5 years while the Latino-white gap is projected to narrow to 2.3 years (see Table 1).

Discussion

Our findings reveal substantial racial and ethnic disparities in the effects of COVID-19 on 2020 period life expectancy from what would be expected in the absence of COVID-19. Based on the most likely scenario of COVID-19 mortality, we estimate that the pandemic will result in reductions in life expectancy for the Latino and Black populations that are over three times as large as the reduction for the white population. The greater toll on life expectancy for the Latino and Black populations arises because of both higher rates and younger ages of COVID-19 mortality among these groups compared with whites. Our projections under different mortality scenarios underscore the potential for policy interventions and public behavior to mitigate the effect of COVID-19 on 2020 life expectancy. In particular, estimated declines in life expectancy for all groups under the universal mask scenario are reduced by about 20%. Nevertheless, the disparities would remain substantial even under this scenario, with Black and Latino life expectancy declining by more than a year in contrast to only a third of a year for white life expectancy.

Potential explanations for the disproportionate burden of deaths among Black and Latino individuals reflect underlying social inequalities that have been well-explored in the media. These groups are more likely than whites to hold low status and low paying jobs, often in industries that have suffered the largest job losses during the pandemic, creating exceptionally

high unemployment rates for both groups and likely loss of health insurance (19–21). Many of those who retained their jobs in essential industries, such as health care, food retail, and meatpacking, face high exposure to viral transmission (22, 23). The incompatibility of their jobs with remote working, combined with low savings and reliance on public transportation, likely constrained many Black and Latino workers to continue to risk exposure to COVID-19 or face dire poverty (24, 25). Undocumented Latinos have been facing the further disadvantage of being ineligible for government unemployment benefits. Living situations provide additional exposure to infection for these groups since they are more likely than whites to reside in crowded housing units (26, 27) and densely populated areas (28, 29) and to lack safe means of transport (25). Lower rates of health insurance, particularly among undocumented Latinos (30, 31), and generally poorer quality of care inside and outside of hospitals compared with whites (32–34) may have heightened the risk that COVID-19 infection among Black and Latino individuals will be fatal.

Many chronic conditions that are prevalent at older ages, such as hypertension, obesity, diabetes, and heart disease, are presumed to be risk factors for COVID-19 severity and mortality (35, 36). Black adults generally have higher rates of these co-morbidities than whites or Latinos, often developing these conditions at much younger ages (37–41). In contrast, Latinos have lower rates of many chronic conditions compared with both white and Black adults, including heart disease (41), but they experience relatively high rates of both obesity and diabetes (37, 39, 42).

One of many very distressing consequences of the racial inequalities in the COVID-19 pandemic is a large projected increase in the life expectancy gap between the Black and white populations. Since the US government began compiling relatively complete death registration data nationally in 1929, mortality risks documented for the Black population have exceeded

those for whites, with the Black-white life expectancy gap peaking at 13.3 years in 1930 (17). The Black-white gap has generally held steady or declined over the latter half of the 20th century with the notable exception of the 1980s, when the gap widened partly as a result of increased rates of HIV and homicide among Black men (11, 17, 43). However, since the early 1990s, death rates among Black individuals have declined more rapidly than for whites, largely due to a reduction in these causes as well as declines in heart disease and some types of cancer (11, 12, 44), cutting the 7-year gap in life expectancy at birth in 1990 to almost half in 2017. This progress is almost certain to be reversed in 2020: Our most likely estimate of the impact of COVID-19 mortality suggests that the Black-white gap will increase by 30%, eliminating the progress made in reducing the Black-white gap over the past decade. Even under the lower mortality scenario, the Black-white gap is projected to increase by about 24%.

The findings for Latinos reveal an interesting conundrum in that Latinos have experienced better survival than white and especially Black individuals throughout the period of data availability. This “paradox,” so-called because Latinos experience higher longevity than whites despite substantially lower education, income, wealth and access to health care, is most pronounced among immigrants and has been shown to result partly from relatively low rates of smoking in past decades as well as selective migration, particularly emigration from the US of Latinos in poor health (45–48). The generally good health of Latinos, which all else being equal should have protected them from COVID-19 infection and fatalities, has laid bare the risks associated with social and economic disadvantage. Our estimates suggest that the consequence is a reduction of more than 36% in the previous Latino advantage over whites for both life expectancy at birth and at age 65.

This analysis contains several limitations. Data on deaths from COVID-19 are likely incomplete for several reasons, including attribution of COVID-19 deaths to other causes and incomplete and inaccurate recording of age, race, and ethnicity of these deaths. Additionally, we are unable to include excess deaths from other causes that may have been directly related to the pandemic, such as deaths that could have been prevented had individuals not forgone medical care to avoid contracting COVID-19 (49). Because the IHME projections do not extend beyond November 1, we are likely underestimating the effect of COVID-19 on life expectancy for the entire 2020 year. However, if COVID-19 deaths largely reflect harvesting – i.e., selective mortality of frail individuals who were likely to die imminently from other causes – we may be overestimating deaths. Last, our calculations are based on COVID-19 mortality projections that were made on July 7, 2020. At this time, the situation is rapidly evolving, and future deaths will depend on many factors, including government policies, human behavior, and scientific advances. Thus, our projections should be interpreted as our best estimates of what will happen to life expectancy in 2020, rather than a definitive forecast.

Contrary to a common misunderstanding, life expectancy does not describe the lived or anticipated experience of any actual cohort or group of people. Rather, life expectancy at a given age (e.g., birth or age 65) is an estimate of how long a population or a group of individuals would live if they were to experience the sequence of age-specific death rates observed in a given period, such as a calendar year, starting at birth or age 65 and continuing through their remaining lifetime. In light of the expectation that the COVID-19 pandemic will subside with the development of vaccines, treatments, and long-term behavioral changes to reduce exposure, no racial or ethnic group may ever experience a reduction in life expectancy of the magnitude attributed to COVID-19 in 2020. At the same time, however, a rapid return to pre-COVID-19 life

expectancy may not be realistic due to the anticipated continued presence of the SARS-COV-2 virus, long-term detrimental health impacts for those who recovered from the virus, and social and economic losses resulting from the pandemic (50).

References

1. National Center for Health Statistics, Data from “Deaths involving coronavirus disease 2019 (COVID-19) by race and Hispanic origin group and age, by state” (2020) (July 9, 2020).
2. J. B. Dowd, *et al.*, Demographic science aids in understanding the spread and fatality rates of COVID-19. *Proc Natl Acad Sci USA* **117**, 9696 (2020).
3. J. R. Goldstein, S. Atherwood, Improved measurement of racial/ethnic disparities in COVID-19 mortality in the United States. *medRxiv*, 2020.05.21.20109116 (2020).
4. S. H. Woolf, Heidi Schoomaker, Life Expectancy and Mortality Rates in the United States, 1959-2017. *JAMA* **322**, 1996–2016 (2019).
5. S. L. Murphy, J. Xu, K. D. Kochanek, E. Arias, “Mortality in the United States, 2017” (National Center for Health Statistics, 2018).
6. K. D. Kochanek, S. L. Murphy, J. Xu, E. Arias, “Mortality in the United States, 2016” (National Center for Health Statistics, 2017).
7. J. Xu, S. L. Murphy, K. D. Kochanek, E. Arias, “Mortality in the United States, 2015” (National Center for Health Statistics, 2016).
8. P. A. Muennig, M. Reynolds, D. S. Fink, Z. Zafari, A. T. Geronimus, America’s Declining Well-Being, Health, and Life Expectancy: Not Just a White Problem. *Am J Public Health* **108**, 1626–1631 (2018).
9. F. C. Bell, M. L. Miller, “Life Tables for the United States Social Security Area 1900-2100” (Social Security Administration, 2005).
10. A. Noymer, M. Garenne, The 1918 Influenza Epidemic’s Effects on Sex Differentials in Mortality in the United States. *Popul Dev Rev* **26**, 565–581 (2000).
11. S. Harper, J. Lynch, S. Burris, G. D. Smith, Trends in the Black-White Life Expectancy Gap in the United States, 1983-2003. *JAMA* **297**, 1224–1232 (2007).
12. S. Harper, D. Rushani, J. S. Kaufman, Trends in the Black-White Life Expectancy Gap, 2003-2008. *JAMA* **307**, 2257–2259 (2012).
13. A. Fenelon, L. Blue, Widening Life Expectancy Advantage of Hispanics in the United States: 1990–2010. *J Immigrant Minority Health* **17**, 1130–1137 (2015).
14. J. Luk, P. Gross, W. W. Thompson, Observations on Mortality during the 1918 Influenza Pandemic. *Clin Infect Dis* **33**, 1375–1378 (2001).
15. Institute for Health Metrics and Evaluation, Data from “COVID-19 Projections.” *Institute for Health Metrics and Evaluation* (2020) (July 7, 2020).

16. U.S. Census Bureau, Population Division, Data from “Annual Estimates of the Resident Population by Sex, Age, Race, and Hispanic Origin for the United States: April 1, 2010 to July 1, 2019” (2020) (July 7, 2020).
17. E. Arias, J. Xu, United States Life Tables, 2017. 66 (2019).
18. P. Heuveline, M. Tzen, Beyond Deaths per Capita: Three CoViD-19 Mortality Indicators for Temporal and International Comparisons. *Medrxiv: the Preprint Server for Health Sciences* (2020).
19. S. J. Cho, J. V. Winters, “The Distributional Impacts of Early Employment Losses from Covid-19” (Social Science Research Network, 2020) (July 8, 2020).
20. J. Stephenson, More US Adults Report Insurance Coverage Loss Associated With COVID-19 Recession. *JAMA Health Forum* **1**, e200855–e200855 (2020).
21. M. Karpman, S. Zuckerman, D. Gonzalez, G. M. Kenney, The COVID-19 Pandemic Is Straining Families’ Abilities to Afford Basic Needs: Low-Income and Hispanic Families the Hardest Hit. 21.
22. D. Hawkins, Differential occupational risk for COVID-19 and other infection exposure according to race and ethnicity. *American Journal of Industrial Medicine* **n/a** (2020).
23. H. J. Rho, S. Fremstad, H. Brown, “A Basic Demographic Profile of Workers in Frontline Industries” (Center for Economic and Policy Research, 2020).
24. U.S. Bureau of Labor Statistics, “Workers who could work at home, did work at home, and were paid for work at home, by selected characteristics, averages for the period 2017-2018” (U.S. Bureau of Labor Statistics, 2019) (July 7, 2020).
25. J. McLaren, “Racial Disparity in COVID-19 Deaths: Seeking Economic Roots with Census data.” (National Bureau of Economic Research, 2020) <https://doi.org/10.3386/w27407> (July 7, 2020).
26. Pew Research Center, “Fighting Poverty in a Tough Economy, Americans Move in with Their Relatives” (Pew Research Center, 2011).
27. United States Census Bureau, “America’s Families and Living Arrangements: 2016” (July 8, 2020).
28. National Research Council, *America Becoming: Racial Trends and Their Consequences: Volume I* (The National Academies Press, 2001) <https://doi.org/10.17226/9599> (July 8, 2020).
29. Pew Research Center, “What Unites and Divides Urban, Suburban and Rural Communities” (Pew Research Center, 2018).

30. R. Moonesinghe, M. Chang, B. I. Truman, “Health Insurance Coverage — United States, 2008 and 2010” (Centers for Disease Control and Prevention, 2013) (July 8, 2020).
31. H. Sohn, Racial and Ethnic Disparities in Health Insurance Coverage: Dynamics of Gaining and Losing Coverage over the Life-Course. *Popul Res Policy Rev* **36**, 181–201 (2017).
32. G. Himmelstein, K. E. W. Himmelstein, Inequality Set in Concrete: Physical Resources Available for Care at Hospitals Serving People of Color and Other U.S. Hospitals. *Int J Health Serv*, 0020731420937632 (2020).
33. K. Fiscella, M. R. Sanders, Racial and Ethnic Disparities in the Quality of Health Care. *Annual Review of Public Health* **37**, 375–394 (2016).
34. Institute of Medicine, *Unequal Treatment: Confronting Racial and Ethnic Disparities in Health Care* (National Academies Press, 2003) <https://doi.org/10.17226/10260> (July 8, 2020).
35. Morbidity and Mortality Weekly Report, Preliminary Estimates of the Prevalence of Selected Underlying Health Conditions Among Patients with Coronavirus Disease 2019 — United States, February 12–March 28, 2020. *Morbidity and Mortality Weekly Report* **69**, 382–386 (2020).
36. W. Guan, *et al.*, Comorbidity and its impact on 1590 patients with COVID-19 in China: a nationwide analysis. *Eur Respir J* **55** (2020).
37. Y. J. Cheng, *et al.*, Prevalence of Diabetes by Race and Ethnicity in the United States, 2011–2016. *JAMA* **322**, 2389–2398 (2019).
38. C. D. Fryar, Y. Ostchega, C. Hales, G. Zhang, D. Kruszon-Moran, “Hypertension Prevalence and Control Among Adults: United States, 2015–2016” (National Center for Health Statistics, 2017).
39. C. Hales, M. Carroll, C. D. Fryar, C. Ogden, “Prevalence of obesity and severe obesity among adults: United States, 2017–2018.” (National Center for Health Statistics, 2020).
40. K. F. Ferraro, B. R. Kemp, M. M. Williams, Diverse Aging and Health Inequality by Race and Ethnicity. *Innov Aging* **1** (2017).
41. National Center for Health Statistics, “Health, United States, 2018.” (National Center for Health Statistics, 2019).
42. N. Goldman, Will the Latino Mortality Advantage Endure? *Res Aging* **38**, 263–282 (2016).
43. K. D. Kochanek, J. D. Maurer, H. M. Rosenberg, Why did black life expectancy decline from 1984 through 1989 in the United States? *Am J Public Health* **84**, 938–944 (1994).
44. P. Sharkey, M. Friedson, The Impact of the Homicide Decline on Life Expectancy of African American Males. *Demography* **56**, 645–663 (2019).

45. A. Fenelon, Revisiting the Hispanic mortality advantage in the United States: The role of smoking. *Social Science & Medicine* **82**, 1–9 (2013).
46. K. S. Markides, K. Eschbach, Aging, migration, and mortality: current status of research on the Hispanic paradox. *The Journals of Gerontology Series B: Psychological Sciences and Social Sciences* **60**, S68–S75 (2005).
47. E. Arenas, N. Goldman, A. R. Pebley, G. Teruel, Return Migration to Mexico: Does Health Matter? *Demography* **52**, 1853–1868 (2015).
48. A. Palloni, E. Arias, Paradox lost: explaining the Hispanic adult mortality advantage. *Demography* **41**, 385–415 (2004).
49. S. H. Woolf, D. A. Chapman, R. T. Sabo, D. M. Weinberger, L. Hill, Excess Deaths From COVID-19 and Other Causes, March-April 2020. *JAMA* (2020) <https://doi.org/10.1001/jama.2020.11787> (July 6, 2020).
50. M. H. Brenner, Will There Be an Epidemic of Corollary Illnesses Linked to a COVID-19–Related Recession? *Am J Public Health* **110**, 974–975 (2020).

Table 1: Life expectancy projections for 2020 by race and ethnicity under different COVID-19 mortality scenarios

Race and ethnicity	Total population		Non-Latino white		Non-Latino Black		Latino	
	Life expectancy		Life expectancy		Life expectancy		Life expectancy	
	At birth (e ₀)	At age 65 (e ₆₅)	At birth (e ₀)	At age 65 (e ₆₅)	At birth (e ₀)	At age 65 (e ₆₅)	At birth (e ₀)	At age 65 (e ₆₅)
Absent COVID-19 (referent)	78.61	19.40	78.52	19.32	74.88	18.09	81.82	21.44
IHME current projection (most likely scenario)	77.88	18.82	78.07	18.89	73.34	16.78	80.17	20.21
Difference (years)	-0.73	-0.58	-0.45	-0.43	-1.54	-1.31	-1.65	-1.23
IHME mandates easing scenario	77.86	18.80	78.05	18.88	73.29	16.74	80.11	20.17
Difference (years)	-0.75	-0.60	-0.47	-0.44	-1.59	-1.35	-1.71	-1.27
IHME universal masks scenario	78.04	18.94	78.17	18.98	73.66	17.05	80.51	20.47
Difference (years)	-0.57	-0.46	-0.35	-0.34	-1.22	-1.04	-1.31	-0.97

Source: Authors' calculations of life expectancy projections in 2020. Difference refers to the difference between the projection and the absent COVID-19 scenario.

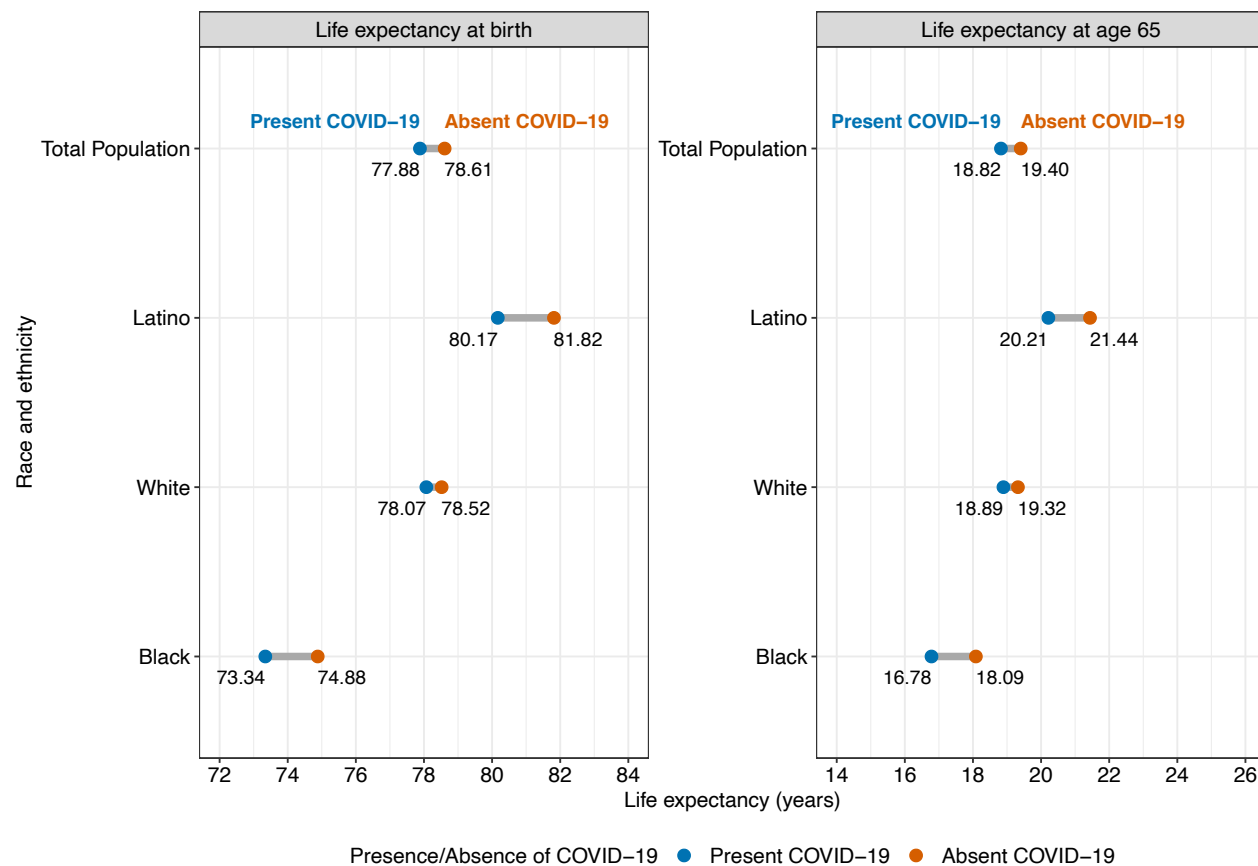


Figure 1: Life expectancy projections for 2020 by race and ethnicity and presence or absence of COVID-19. The “Present COVID-19” scenario is based on the IHME current projection scenario.

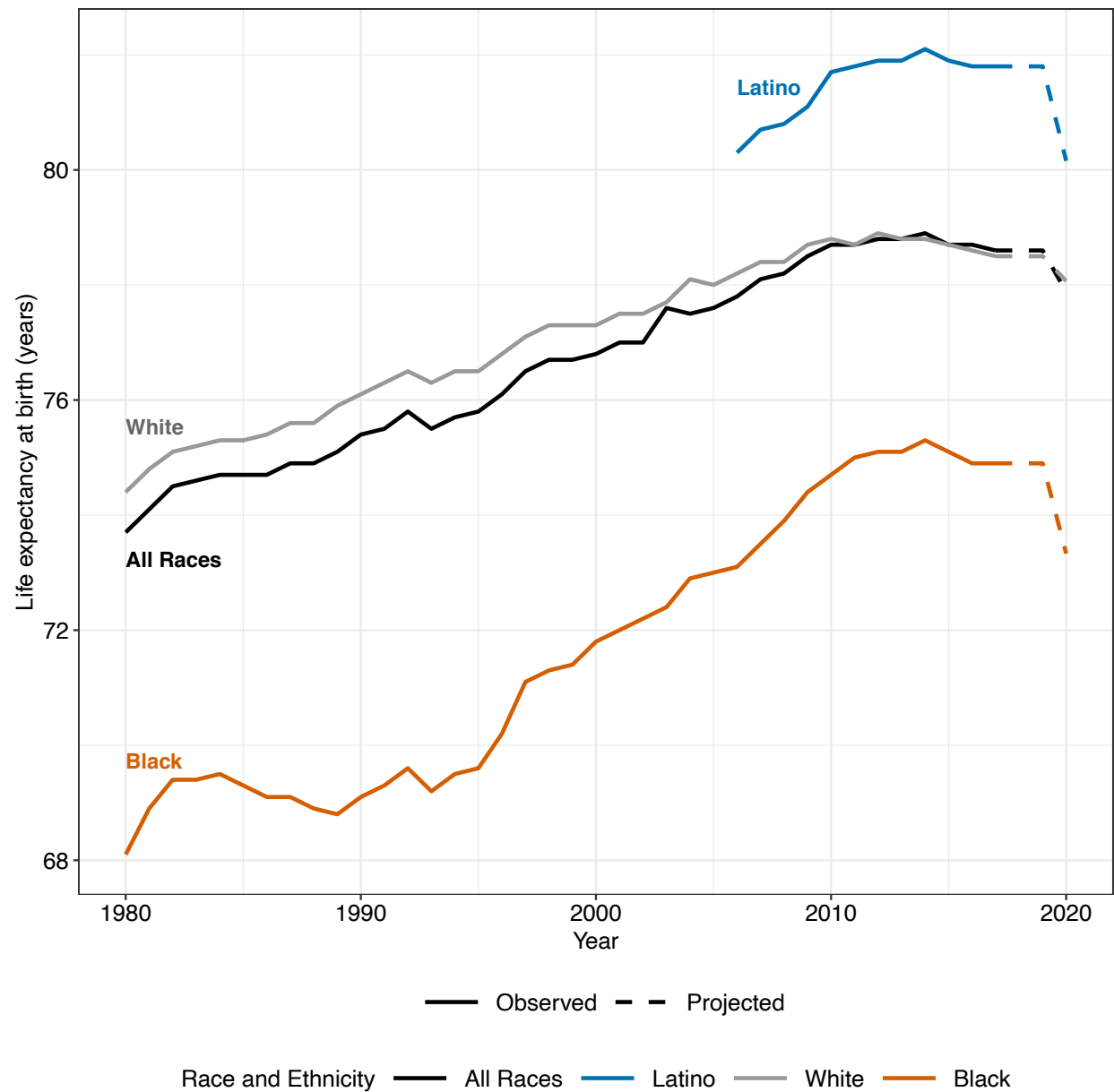


Figure 2: Trends in life expectancy at birth by race and ethnicity: 1980-2020. Note: The data for the Black and white populations prior to 2006 include Latinos; data for these groups from 2006 onward are for the non-Latino Black and non-Latino white populations only. The projections for 2020 are based on the IHME current projection scenario.

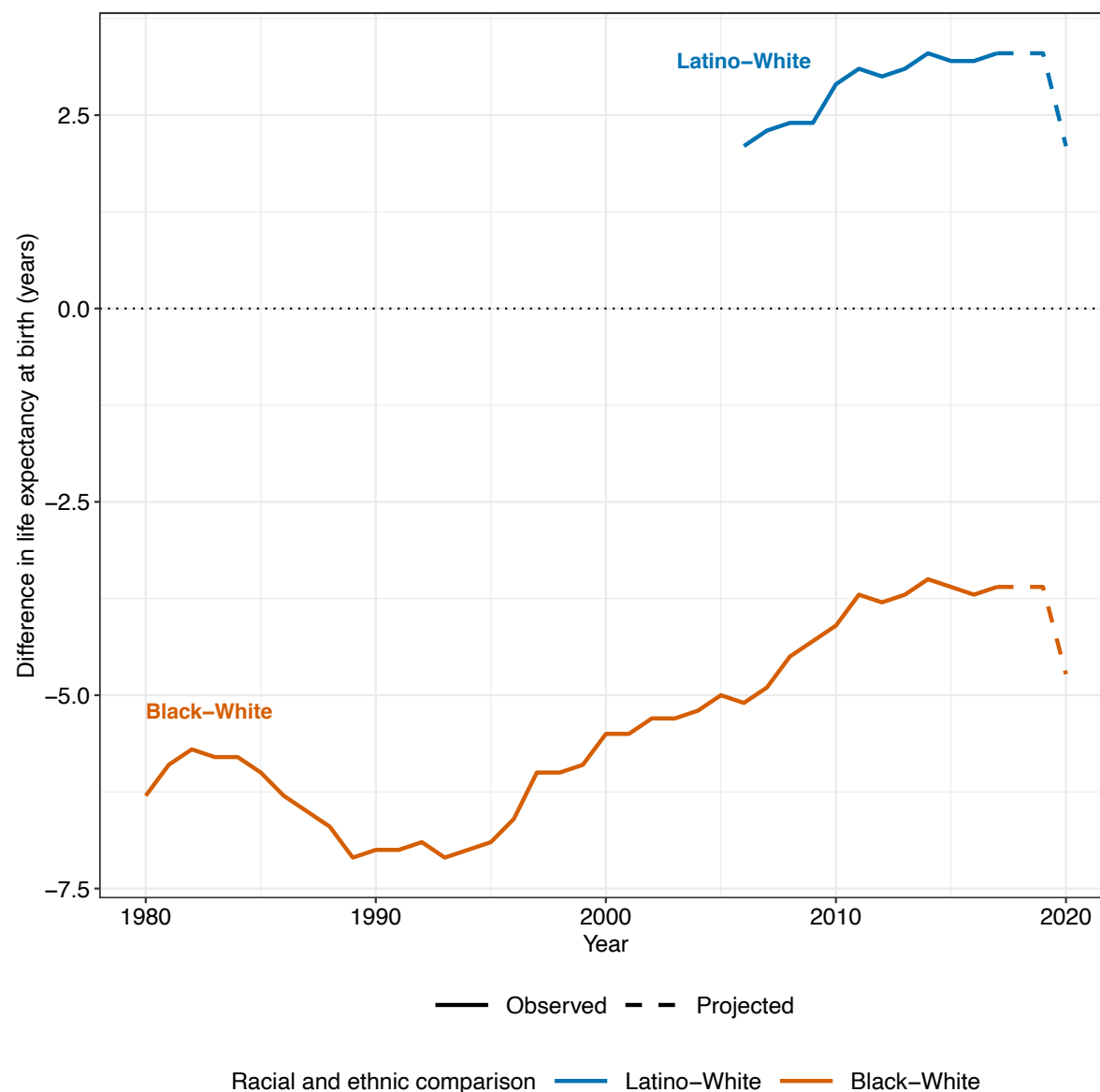


Figure 3: Trends in racial and ethnic differences in life expectancy: 1980-2020. Note: The data for the Black and white populations prior to 2006 include Latinos; data for these groups from 2006 onward are for the non-Latino Black and non-Latino white populations only. The projections for 2020 are based on the IHME current projection scenario.