

Title: Few Excess Mortality in Japan in August and October, 2020 since January, 2020

Junko Kurita<sup>1</sup>, Tamie Sugawara<sup>2</sup>, Yoshiyuki Sugishita<sup>2</sup>, Yasushi Ohkusa<sup>2</sup>

<sup>1</sup> Department of Nursing, Tokiwa University, Ibaraki, Japan

<sup>2</sup> Infectious Disease Surveillance Center, National Institute of Infectious Diseases,  
Shinjuku, Tokyo, Japan

Keywords: excess mortality; influenza; all cause death; stochastic frontier estimation;  
NIID model

\*<sup>1</sup>) Correspondence to:

Tamie Sugawara tammy@nih.go.jp

## **Abstract**

**Background:** As of the mid of December, 2020, the COVID-19 outbreak has been record the highest peak in November and December. Nevertheless, no remarkable excess mortality attributable to COVID-19 has been observed.

**Object:** We sought to quantify excess mortality in April using the National Institute of Infectious Diseases (NIID) model.

**Method:** We applied the NIID model to deaths of all causes from 1987 up through October, 2020 for the whole of Japan and up through July for Tokyo.

**Results:** Results show very few excess mortality in August and October, 2020 It was estimated as 12 and 104. Conversely, in Tokyo, no excess mortality was detected until July.

**Discussion and Conclusion:** This is the first time to detect excess mortality since the outbreak of COVID-19 had emerged in Japan. It might be important to continue to monitor excess mortality of COVID-19 carefully after October 2020.

## 1. Introduction

To date, excess mortality has mainly been used to assess the social effects of influenza activity [1–6]. However, since the emergence of COVID-19, excess mortality attributable to COVID-19 has been attracting attention [7] as a measure of the total effects of the disease because it can reflect cases which have not been identified as polymerase chain reaction (PCR) positive. Especially in Japan, PCR tests administered per capita have been few. Therefore, concern has arisen about the possibility that some deaths caused by COVID-19 have not been recognized heretofore. Moreover, excess mortality related to COVID-19 might be expected to contribute to evaluation of vaccine effects. For these evaluations, the estimated excess mortality without the effects of a vaccine should be regarded as a baseline. Nevertheless, no such a trial has been undertaken to date. This study might be the first trial to measure that figure in Japan.

As of the end of July, 2020, the COVID-19 outbreak showed its highest peak on April 3. In all, about 17 thousand patients and about one thousand deaths from the outbreak have been reported in Japan. Although Japan has about one third of the population of the U.S., these figures are vastly different in scale from those of the U.S., which has reported 1.93 million cases of morbidity and 110 thousand cases of mortality (deaths) [8]. In light of the much lower number of patients in Japan, some criticism has arisen that low PCR testing rates might have led to the lower number of documented patients [9]. In this sense, one might regard the number of deaths as reflecting the actual situation in Japan, but with no testing-related bias.

Concerning deaths, the case-fatality rate (CFR) is about 5%. In fact, the CFRs in both countries are not much different. The lower PCR testing in Japan might be related to some problems. Therefore, we specifically examined excess mortality attributable to

COVID-19 in Japan, irrespective of the cause of death.

In Japan, excess mortality was estimated using the National Institute of Infectious Diseases (NIID) model [10], which has been the official procedure for more than ten years. It was applied to two data sources: the national monthly deaths of all causes and the respective weekly pneumonia and influenza deaths in the 21 largest cities and their total. The latter is published regularly in Japanese during the influenza season as <https://www.niid.go.jp/niid/ja/flu-m/2112-idsc/jinsoku/131-flu-jinsoku.html>.

Unfortunately, that publication ceased in March 2020 because it is intended for influenza. The first peak in Japan was April 3[11]: excess mortality cannot be detected until March. Instead, we applied NIID model to the all causes of death in April to October, 2020 in Japan.

## **2. Method**

Excess mortality is defined as the difference between the actual number of deaths and an epidemiological threshold. The epidemiological threshold is defined as the upper bound of the 95% confidence interval (CI) of the baseline. The baseline is defined as the number of deaths that are likely to have occurred if an influenza outbreak had not occurred. Therefore, if the actual deaths are fewer than the epidemiological threshold, then excess mortality is not inferred.

The data used for this study were monthly deaths of all causes from 1987 through October 2020 published by Ministry of Health, Labour and Welfare (MHLW) [12].

NIID model, the Stochastic Frontier Estimation [13–19], is presented as

$$\log D_t = \alpha + \beta T_t + \gamma T_t^2 + \sum \eta_i M_{it} + \varepsilon_t \quad \text{and} \quad (1)$$

$$\varepsilon_t = v_t + |\omega_t|, \quad (2)$$

where  $D_t$  represents all causes of death in month/year  $t$ ,  $T_t$  denotes the linear time trend, and  $M_{it}$  is the dummy variable for a month, which is one if  $t$  is the  $i$ -th month and otherwise zero. Moreover,  $v_t$  and  $\omega_t$  are stochastic variables as  $v_t \sim N(0, \mu^2)$  and  $\omega_t \sim N(0, \xi^2)$ ; they are mutually independent. Although  $v_t$  represents stochastic disturbances,  $\omega_t$  denotes non-negative deaths attributable to influenza. These disturbance terms in this model are parameterized by two parameters:  $\xi/\mu$  and  $(\mu^2 + \xi^2)^{0.5}$ . If the null hypothesis  $\xi/\mu=0$  is not rejected, then the Stochastic Frontier Estimation model is inappropriate.

Study areas were the whole of Japan and its capital, Tokyo. Study period for estimation was from 1987 to October 2020 for the whole of Japan and up through July for Tokyo. We adopted 5% as significant level.

### 3. Results

Table 1 summarized the estimation results in the whole of Japan and Table 2 for Tokyo. Figure 1 presents observed deaths, the estimated baseline, and its threshold in

Japan. Figure 2 specifically depicts the last year in Japan. We found 12 and 104 excess mortality in August and October, 2020

Figure 3 and 4 showed the estimated result in Tokyo. No excess mortality was found in Tokyo until July.

#### **4. Discussion**

This study applied the NIID model to all causes of death to detect excess mortality attributable to COVID-19. We found 12 and 104 excess mortality in August and October, 2020. Conversely, we did not find any excess mortality in Tokyo until July.

On the other hand, about 2000 mortality cases caused by COVID-19 confirmed by PCR testing, were reported in MHLW officially as of December throughout Japan [12]. Therefore, even if COVID-19 actually caused external mortality, neither the NIID model nor another statistical model might detect significant effects attributable to COVID-19. Of course, some deaths from COVID-19 might not have been tested and might have been excluded from these official numbers of mortality cases. However, total deaths might include deaths without diagnosis as COVID-19, but actually those associated with COVID-19. Estimation results suggest that such unrecognized deaths associated with COVID-19 are not significant, even if they exist.

Some researcher in Japan emphasized substantial excess mortality until May around six thousands due to COVID-19 [20] using Farrington algorithm [21] and EuroMOMO

[22]. However, in nationwide, we found only 13 and 104 excess mortality in August and October. In fact, they also showed that the observation were less than baseline in nationwide until May. However, they summed up the number in the prefectures where the excess mortalities were found and emphasize six thousands excess mortality in nationwide. Therefore, their too much excess mortality in Japan probably mislead risk participation for COVID-19 among general population.

In particular, in Tokyo, though they found 18 excess mortality in May, we did not found it. It probably suggested that their adopted procedure have upper biased for excess mortality comparison with NIID model, which was suggested logically [23].

Conversely, because we found that the number of total death were lower than baseline in nationwide until July and very few excess mortality in August, we might emphasize negative excess mortality which means precaution among people including wearing masks, washing hand by alcohol, and keep social distance reduce the infection risk of not only for COVID-19 as well as other infection diseases. Therefore, total number of death had decreased offsetting completely the effect of COVID-19.

Using pneumonia death data instead of total death data might be better to evaluate excess mortality caused by COVID-19. However, application rule of the International Classification of Diseases was revised on January 2017, after which pneumonia deaths

decreased by approximately 25%. April 2020 was the fourth April since that of 2017.

Therefore, April 2020 data must be compared to data of only three earlier years.

Therefore, it might be inappropriate to measure excess mortality attributable to COVID-19 using pneumonia deaths only.

## **5. Conclusion**

We found a few excess mortality since the outbreak of COVID-19 had emerged in Japan in August and October. It might be important to continue to monitor excess mortality of COVID-19 carefully after October 2020.

## **6. Acknowledgement**

We acknowledge Dr. Nobuhiko Okabe, Kawasaki City Institute for Public Health, Dr. Kiyosu Taniguchi, National Hospital Organization Mie National Hospital, and Dr. Nahoko Shindo, WHO for their helpful support.

## **7. Conflict of interest**

The authors have no conflict of interest to declare.

## **8. Ethical considerations**

All information used for this study was published on the web site of MHLW [12].  
Therefore, no ethical issue is presented.



## 9. References

- 1) Lin HC, Chiu HF, Ho SC, Yang CY. Association of influenza vaccination and reduced risk of stroke hospitalization among the elderly: a population-based case-control study. *Int J Environ Res Public Health* 2014; 11: 3639-49.
- 2) Asghar Z, Coupland C, Siriwardena N. Influenza vaccination and risk of stroke: Self-controlled case-series study. *Vaccine*. 2015; 33: 5458-63.
- 3) Riedmann EM. Influenza vaccination reduces risk of heart attack and stroke. *Hum Vaccin Immunother* 2013; 9: 2500.
- 4) Kwok CS, Aslam S, Kontopantelis E, Myint PK, Zaman MJ, Buchan I, Loke YK, Mamas MA. Influenza, influenza-like symptoms and their association with cardiovascular risks: a systematic review and meta-analysis of observational studies. *Int J Clin Pract*. 2015;69:928-37.
- 5) Muhammad S, Haasbach E, Kotchourko M, Strigli A, Krenz A, Ridder DA, Vogel AB, Marti HH, Al-Abed Y, Planz O, Schwaninger M. Influenza virus infection aggravates stroke outcome. *Stroke*. 2011;42:783-91.
- 6) Assad F, Cockburn WC, Sundaresan TK. Use of excess mortality from respiratory diseases in the study of influenza. *Bull WHO* 1973; 49: 219-33.

- 7) US Center for Disease Control and Prevention. Excess Deaths Associated with COVID-19. [https://www.cdc.gov/nchs/nvss/vsrr/covid19/excess\\_deaths.htm](https://www.cdc.gov/nchs/nvss/vsrr/covid19/excess_deaths.htm)  
[accessed on July 15, 2020]
- 8) Japan Times. Japan's daily PCR test capacity tops 20,000. <https://www.japantimes.co.jp/news/2020/05/16/national/japans-daily-pcr-test-capacity-20000/#.XuAwImeP6AA> [accessed on July 10, 2020]
- 9) World Health Organization. Coronavirus disease (COVID-2019) situation reports. <https://www.who.int/emergencies/diseases/novel-coronavirus-2019/situation-reports/> [accessed on October 28,2020]
- 10) Sugawara T, Ohkusa Y. Comparison of Models for Excess Mortality of Influenza Applied to Japan. *Journal of Biosciences and Medicines*, 2019, 7, 13-23.  
doi:10.4236/jbm.2019.76002
- 11) Kurita J, Sugawara T, Ohkusa Y. Mobility data can explain the entire COVID-19 outbreak course in Japan. medRxiv 2020.04.26.20081315; doi: <https://doi.org/10.1101/2020.04.26.20081315>
- 12) Ministry of Health, Labour and Welfare. Preliminary statistics on demographics <https://www.mhlw.go.jp/toukei/list/81-1a.html> (in Japanese)  
[accessed on December 22, 2020]

- 13) Aiger AD, Lovell K, Schmitdt P. Formulation and estimation of stochastic frontier production function models. *Journal of Econometrics* 1977; 21-37.
- 14) Jondrow J, Lovell K, Materov S, Schmidt P. On the estimation of technical inefficiency in the stochastic frontier production function model. *Journal of Econometrics* 1982; 233-9.
- 15) Li T, Rosenman R. Cost inefficiency in Washington Hospitals: A stochastic frontier approach using panel data, *Health Care Management Science* 2001; 4: 73-81.
- 16) Newhouse JP. Frontier Estimation: How useful a tool for health economics? *Journal of Health Economics* 1994; 13: 317-22.
- 17) Shelton Brown H. Managed care and technical efficiency. *Health Economics*. 2003; 12: 149-58.
- 18) Jacobs R. Alternative methods to examine hospital efficiency: Data envelopment analysis and stochastic frontier analysis. *Health Care Management Science*. 2001; 4: 103-15
- 19) Rosko MD. Cost efficiency of US hospitals: A stochastic frontier approach. *Health Economics*. 2001; 539-51.
- 20) National Institute of Infectious Diseases, Excess mortality in Japan, on August

2020.

<https://www.niid.go.jp/niid/ja/from-idsc/493-guidelines/9835-excess-mortality-20aug.html> (in Japanese) [accessed on September 7, 2020]

- 21) Center of Disease Control and Prevention, Excess Deaths Associated with COVID-19 <https://data.cdc.gov/NCHS/Excess-Deaths-Associated-with-COVID-19/xkkf-xrst> [accessed on September 7, 2020]
- 22) EUROMOMO, EUROMOMO, <https://www.euromomo.eu/> [accessed on September 7, 2020]
- 23) Sugawara T, Ohkusa Y. Comparison of Models for Excess Mortality of Influenza Applied to Japan. *Journal of Biosciences and Medicines*, 2019, 7, 13-23.  
doi:10.4236/jbm.2019.76002

Table 1 NIID Model estimation results since 1987 until August 2020 in Japan

Explanatory variables	Estimated coefficients	<i>p</i> -value
Constant	11.12	<0.0004
Time trend	0.001537	<0.0004
Time trend <sup>2</sup>	0.0000009763	0.423
January	0.07075	<0.0004
February	-0.05631	<0.0004
March	-0.01671	0.053
April	-0.1027	<0.0004
May	-0.1247	<0.0004
June	-0.2126	<0.0004
July	-0.1776	<0.0004
August	-0.1710	<0.0004
September	-0.2083	<0.0004
October	-0.1197	<0.0004
November	-0.08768	<0.0004
$\xi/\mu$	2.386	<0.0004
$(\mu^2 + \xi^2)^{0.5}$	0.04934	<0.0004

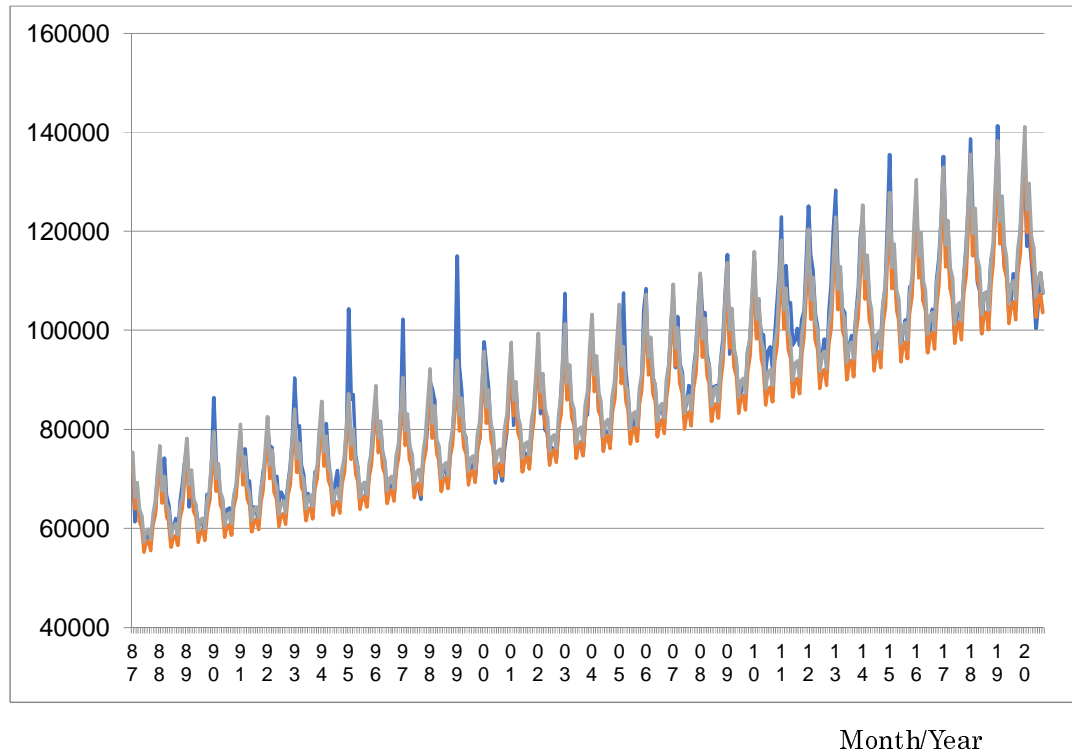
Note: For the 404 observations, the log likelihood was 899.957.  $\xi^2$  denotes the variance of the non-negative disturbance term.  $\mu^2$  is the variance of the disturbance term.

Table 2 NIID Model estimation results since 1987 until July 2020 in Tokyo

Explanatory variables	Estimated coefficients	<i>p</i> -value
Constant	8.55	<0.0004
Time trend	0.00186	<0.0004
Time trend <sup>2</sup>	-0.726*10 <sup>-6</sup>	0.001
January	0.0759	<0.0004
February	0.137	<0.0004
March	0.0292	0.015
April	0.0479	<0.0004
May	-0.0271	0.111
June	-0.0584	<0.0004
July	-0.111	<0.0004
August	-0.0664	<0.0004
September	-0.0719	<0.0004
October	-0.108	<0.0004
November	-0.0253	0.102
$\xi/\mu$	2.44	<0.0004
$(\mu^2 + \xi^2)^{0.5}$	0.0684	<0.0004

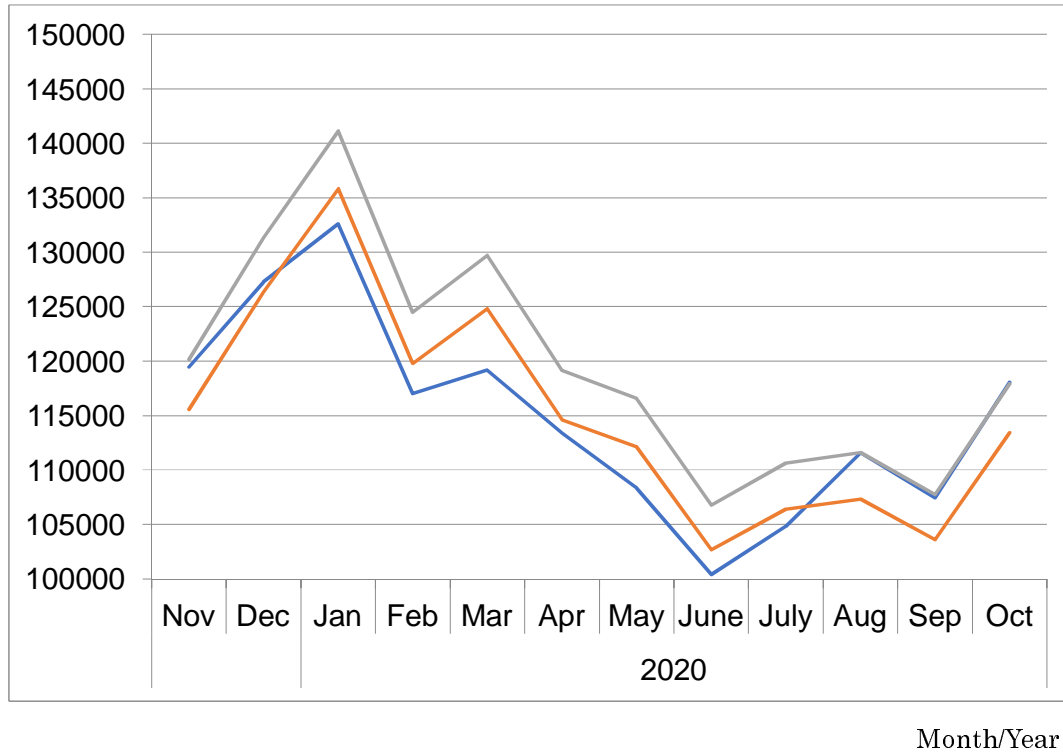
Note: For the 402 observations, the log likelihood was 771.  $\xi^2$  denotes the variance of the non-negative disturbance term.  $\mu^2$  is the variance of the disturbance term.

Figure 1: Observations of the estimated baseline and threshold since 1987 until August 2020 in Japan (persons)



Note: The blue line represents observations. The orange line represents the estimated baseline. The gray line shows its threshold.

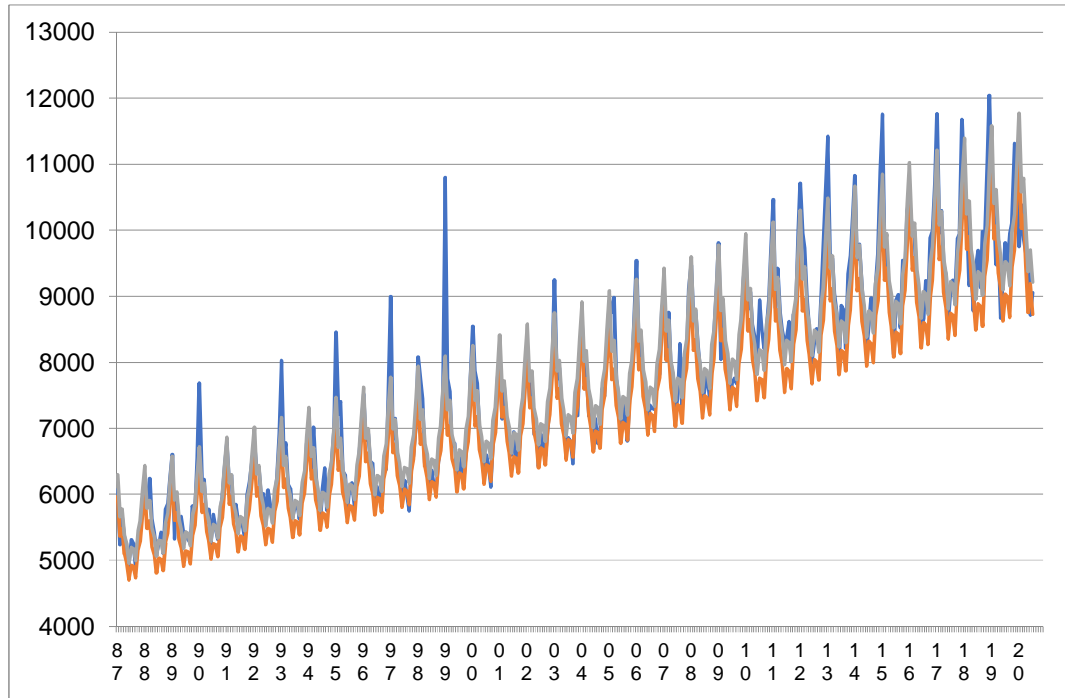
Figure 2: Observation of the estimated baseline and threshold since October 2019 in Japan  
(persons)



Note: The blue line represents observations. The orange line represents the estimated baseline. The gray line shows its threshold.

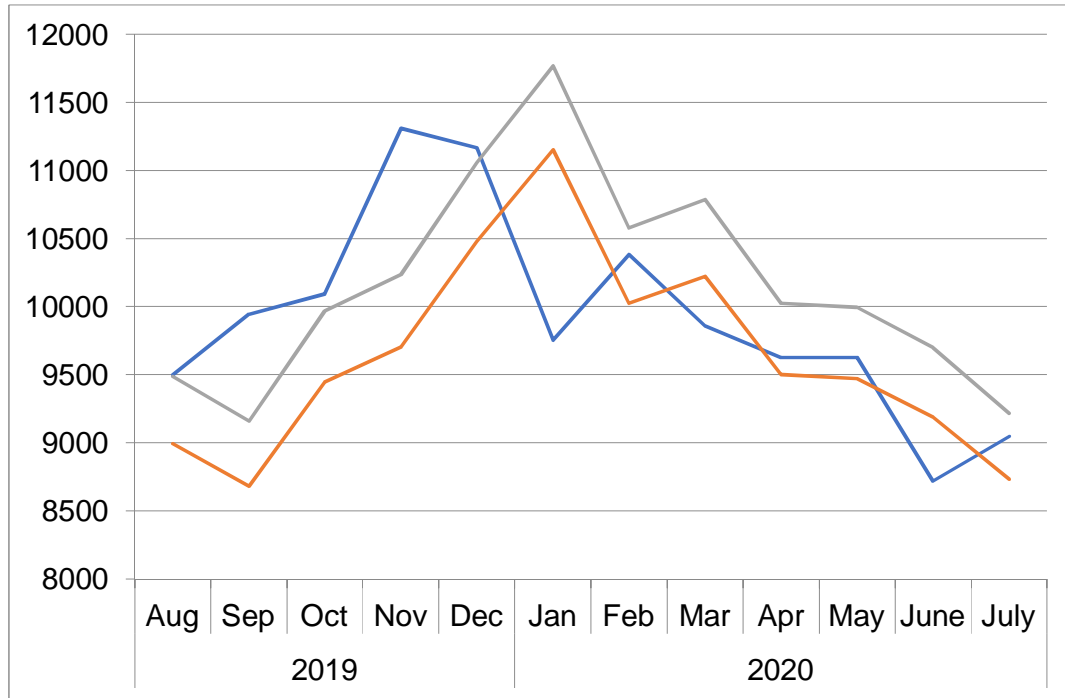


Figure 3: Observations of the estimated baseline and threshold since 1987 until July 2020 in Tokyo  
(persons)



Note: The blue line represents observations. The orange line represents the estimated baseline. The gray line shows its threshold.

Figure 4: Observation of the estimated baseline and threshold since August 2019 in Tokyo  
(persons)



Note: The blue line represents observations. The orange line represents the estimated baseline. The gray line shows its threshold.