

Risk Factors Prediction, Clinical Outcomes and Mortality of COVID-19 Patients

Roohallah Alizadehsani¹, Zahra Alizadeh Sani^{2,3}, Mohaddeseh Behjati², Zahra Roshanzamir⁴, Sadiq Hussain⁵, Niloofar Abedini⁶, Fereshteh Hasanzadeh³, Abbas Khosravi¹, Afshin Shoeibi^{7,8}, Mohamad Roshanzamir⁹, Pardis Moradnejad², Saeid Nahavandi¹, Fahime Khozeimeh¹⁰, Assef Zare¹¹, Maryam Panahiazar¹², U. Rajendra Acharya^{13,14,15}, Sheikh Mohammed Shariful Islam^{*,16,17,18}

¹Institute for Intelligent Systems Research and Innovation (IISRI), Deakin University, Victoria 3217, Australia.

²Rajaei Cardiovascular Medical and Research Center, Iran University of Medical Sciences, Tehran, Iran.

³Omid hospital, Cardiac MRI department, Tehran, IRAN.

⁴Pediatric Respiratory and Sleep Medicine Research Center, Children's Medical Center, Tehran University of Medical Sciences, Tehran, Iran

⁵System Administrator at Dibrugarh University, Assam, India, 786004.

⁶Tehran University of Medical Science, Imam Khomeini Hospital Complex, Tehran, Iran.

⁷Faculty of Electrical and Computer Engineering, Biomedical Data Acquisition Lab, K. N. Toosi University of Technology, Tehran, Iran.

⁸Computer Engineering Department, Ferdowsi University of Mashhad, Mashhad, Iran.

⁹Department of Engineering, Fasa Branch, Islamic Azad University, Post Box No 364, Fasa, Fars 7461789818, Iran

¹⁰Mashhad University of Medical Science, Mashhad, Iran.

¹¹Faculty of Electrical Engineering, Gonabad Branch, Islamic Azad University, Gonabad, Iran.

¹²University of California San Francisco, San Francisco, CA, USA.

¹³Department of Electronics and Computer Engineering, Ngee Ann Polytechnic, Singapore 599489, Singapore.

¹⁴Department of Biomedical Informatics and Medical Engineering, Asia University, Taichung, Taiwan.

¹⁵Department of Biomedical Engineering, School of Science and Technology, Singapore University of Social Sciences, Singapore.

¹⁶Institute for Physical Activity and Nutrition, Deakin University, Melbourne, Australia.

¹⁷Cardiovascular Division, The George Institute for Global Health, Australia.

¹⁸Sydney Medical School, University of Sydney, Australia.

* Corresponding Author: Sheikh Mohammed Shariful Islam, Email: shariful.islam@deakin.edu.au

Abstract

Background Preventing communicable diseases requires understanding the spread, epidemiology, clinical features, progression, and prognosis of the disease. Early identification of risk factors and clinical outcomes might help to identify critically ill patients, provide proper treatment and prevent mortality.

Methods We conducted a prospective study in patients with flu-like symptoms referred to the imaging department of a tertiary hospital in IRAN between 3 March 2020 and 8 April 2020. Patients with COVID-19 were followed up to check their health condition after two months. The categorical data between groups were analyzed by Fisher's exact test and continuous data by Wilcoxon Rank-Sum Test.

Findings 319 patients (mean age 45.48 ± 18.50 years, 177 women) were enrolled. Fever, dyspnea, weakness, shivering, C-reactive protein (CRP), fatigue, dry cough, anorexia, anosmia, ageusia, dizziness, sweating and age were the most important symptoms of COVID-19 infection. Traveling in past three months, asthma, taking corticosteroids, liver disease, rheumatological disease, cough with sputum, eczema, conjunctivitis, tobacco use, and chest pain did not have any relationship with COVID-19.

Research in context

Evidence before this study

We searched Google scholar, PUBMED and Scopus for articles that investigated the recent epidemic of COVID-19, especially those that investigate effective risk factors. We found that there is not enough research in this field, especially the risk factor that is effective in finding the rate of mortality of this disease.

Added value of this study

We determined some of the most important effective risk factors on prediction, clinical outcome and mortality rate of COVID-19 infection. To the best of our knowledge, some of these risk factors are investigated in this work for the first time. Our findings could provide good insight into the early prediction of the disease, its clinical outcomes, and suggest a cost-effective method for mortality prediction.

Implication of all the available evidence

COVID-19 can transmit human-to-human and lead to severe symptoms and high mortality. Early prediction of this disease and the risk of mortality can help the physicians to better manage this worldwide health problem.

Interpretation Finding clinical symptoms for early diagnosis of COVID-19 is a critical part of prevention. These symptoms can help in the assessment of disease progression. To the best of our knowledge, some of the effective features on the mortality due to COVID-19 are investigated for the first time in this research.

Funding None

Keywords: SARS-CoV-2, COVID-19, Corona Virus, risk factors, COVID-19 Prediction in patients, Mortality prediction of COVID-19

Introduction

In Wuhan, Hubei Province, China, since December 2019, a cohort of patients suffered from acute respiratory disease with unknown etiology [1]. The first cases exhibited a link to the Huanan wholesale seafood market. By investigating the throat swab sample of patients, the Chinese Center for Disease Control and Prevention (CDC) detected a new coronavirus, that was previously known as severe acute respiratory syndrome coronavirus 2 (SARS-CoV-2, formerly dubbed as 2019-nCoV) by the International Committee on Taxonomy of Viruses (ICTV) [2]. Human ACE2 molecules have a strong interaction with the receptor-binding domain (RBD) of SARS-CoV-2 Spike protein. This yields a high infectious competence of the virus to human respiratory epithelial cells. The virus causes fatigue, cough, fever and severe or mild respiratory impediments. SARS-CoV-2 is termed as Coronavirus Disease 2019 (COVID-19), with which most of the patients exhibited mild symptoms [3]. But a fraction of the critical patients developed acute respiratory failure, septic shock and other grim complications including acute respiratory distress syndrome (ARDS), and multiple organ dysfunction syndromes (MODS) that may lead to fatal outcomes [4]. COVID-19 has been recognised as a Class B respiratory contagious ailment by the China Health Committee.

The WHO, on March 12th, 2020, declared COVID-19 as a global pandemic [5]. Several measures were implemented to restrain the outbreak of the disease by different governments across the globe. These measures include restrictive face-to-face communications via obligatory ‘social distancing’ and closure of public education and recreation sites such as parks, schools, colleges and Universities. Majority of the world’s population have gone through an unprecedented experience by following stern observance to the new measures. Elderly persons, along with some ailments such as acute kidney injury, diabetes mellitus,

cardiovascular diseases, cancer and hypertension are at higher risk of mortality or may have more critical of COVID-19 [4]. 13.8–19.1% reported COVID-19 patients in Wuhan, China became ailments critically. An astonishing fatality rate of 61.5% was recorded in the latest reports that increased significantly with age and for patients with comorbidities[6]. This has led to the scarcity of intensive care facilities in the hospitals due to the exponential increase in the number of cases and also put enormous pressure on medical staff and services. It is unfortunate not to have any prognostic biomarker to identify patients that may need urgent medical care and associated fatality rate. Besides, although there is a rapid increase in COVID-19 cases, the information concerning the clinical symptoms (features) is inadequate. Liu et al. [7] compared the clinical characteristics of elderly patients of COVID-19 with middle-aged and young patients. The common symptoms were fever, sputum and cough. The proportion of multiple lobe involvement and pneumonia severity index (PSI) score ($p < 0.001$) of the old patient's group was elevated than the middle and young aged cohort.

Early detection of disease helps the clinicians to provide necessary, timely treatment. Zheng et al. [8] explored the clinical and epidemiological characteristics of coronavirus. They used the treatment, radiological, laboratory, clinical, demographic and epidemiological data of 99 confirmed COVID-19 patients in China. They identified fever, fatigue and dry cough as common symptoms. The median age of recorded patients is 49 years, 41% had the underlying disease, 49% came in close contact with the COVID-19 affected patients, and 42% had lived in or travelled to Wuhan. Lower CD8 and CD4 counts, smaller white blood cells, lymphocytes and neutrophils; higher brain natriuretic peptide levels; higher levels of myocardial damage and higher C-reactive protein levels may be used for the early recognition of severely ill patients of the disease.

Previous studies have shown that COVID-19 patients present with different signs and symptoms. Abnormal liver function is observed in some of the COVID-19 patients. Fan et al. [9] studied the features related to COVID-19 associated liver damage for providing the treatment. The study included 75 male and 73 female patients from China with a mean age of 50 years. The enhanced levels of total bilirubin, alkaline phosphatase, gamma-glutamyltransferase and aspartate and alanine aminotransferase are considered as abnormal liver function. The patients with abnormal liver function are treated with lopinavir/ritonavir drug after hospital admission. Such patients had more extended hospital stay than patients with normal liver function.

Case-fatality rates and confirmed cases of COVID-19 are different among countries. One probable reason may be universal bacilli Calmette-Guérin (BCG) vaccine coverage varies from country to country. Hamiel et al. [10] reviewed 72,060 test results among the COVID-19 affected patients from Israel. They did not find a statistical difference between the positive test results in the unvaccinated group and BCG vaccinated cohort. Their study could not find any protective effect on the BCG vaccinated adults against the pandemic.

Heart transplant (HT) patients may have higher risk levels from COVID-19 disease due to clinically significant immunosuppression and several other comorbidities. Latif et al. [11] studied the treatment, outcomes and characteristics of patients having COVID-19 with HT. Their study recorded the fatality rate of 25% in patients of HT related to COVID-19 disease. Wu et al. [12] exploited the outcomes and the clinical characteristics in COVID-19 infected patients who died or had acute respiratory distress syndrome (ARDS). They extracted the risk factors related to ARDS development and death as coagulation dysfunction, neutrophilia and older age by using bivariate Cox regression. They concluded that due to less immune response, former age patients have a higher risk of ARDS development and death. Rothe et al. [13] examined the transmission of COVID-19 disease from asymptomatic contact in Germany. They concluded that asymptomatic patients were potential carriers of COVID-19 infection, and there was an urgent need for the examination of transmission dynamics of a pandemic.

Oxley et al. [14] investigated five patients of large-vessel stroke who were diagnosed with COVID-19 in a New York City hospital with a 5% prevalence of stroke among COVID-19 patients. Reluctance to present to the hospital, isolation, and social distancing were causes of the poor outcome. They asserted the need for further study of the association between COVID-19 in young patients and large-vessel stroke. First COVID-19 case in Iceland was recorded in the last part of February, 2020. Gudbjartsson et al. [15] carried out screening with random samples from 2283 subjects, invited samples from 10,797 persons and out of which 643 were tested positive. Most of the tested positive persons had an international travel history at the early stage of the study. The haplotypes of the COVID-19 changed over time and were found to be diverse.

Type 2 diabetes (T2D) has been identified as prime comorbidity of COVID-19. It is uncertain about the effect of blood glucose (BG) control on the medical attention or mortality in patients with T2D as well as COVID-19. Zhu et al. [16] conducted a multi-centre, retrospective study of 7,337 patients in China, of which 952 already had Type 2 diabetes (T2D) disease. They observed that T2D were more prone to multiple organ injury, mortality and need more medical attention than non-diabetic ones. Early, fast and accurate clinical assessment of the COVID-19 severity level is crucial to support healthcare planning and decision making. Yan et al. [4] collected 485 COVID-19 patients' blood samples from Wuhan, China, to detect critical biomarkers of the disease. Their machine learning method picked high-sensitivity C-reactive protein (hs-CRP), lymphocyte and lactic dehydrogenase (LDH) as their potential biomarkers that achieved 90% accuracy in mortality prediction. Some of the features that seem to have essential effects on COVID-19 mortality rate were not investigated in those papers. In this research, we analysed the additional risk factors of COVID-19 in Iran. To the best of our knowledge, there are a few studies available in this field, especially in Middle East countries.

Method and material

This study was prospectively performed from 3 March 2020 to 8 April 2020 at the imaging department of OMID hospital, Tehran, IRAN. In this study, 319 patients were included with flu-like symptoms during the COVID-19 virus pandemic. All clinical data, including general information, epidemiological and medical history, symptoms, signs, epidemiological and clinical characteristics of patients, were included in this study. Totally 32 features (symptoms) were selected on consultation with four infection disease specialists. Then these features were included in the questionnaire of patients. This study was also approved by the local ethical committee of the university. Our patients were informed about the study aims, and written consent was obtained before the inclusion of this study.

For patients with symptoms, lung computed tomography (CT) has been performed as a noninvasive test for lung situation assessment. Unlike RT-PCR, which requires specific laboratory environments, CT-scan was used to provide a faster diagnosis of lung diseases. All the suspected patients underwent a thin-slice high-resolution multi-slice spiral CT scan in a supine position, and high-resolution computed tomography (HRCT) images of all patients were reviewed by a radiologist with more than 14 years of experience in chest imaging. This way, COVID-19 was diagnosed in suspicious cases. We have followed-up patients for two months after participation to determine their vital status.

Statistical analysis

Data are presented as means (\pm standard deviations). We analyzed the features using Matlab 2016a software. Fisher's exact test [17] and Wilcoxon Rank-Sum Test [18] are used for categorical and continuous data respectively, to specify differences between the two groups. Statistical significance is set at $p \leq 0.05$.

Results

A total 319 patients (mean age 45.48 ± 18.50 years, 177 women) were recruited. In the patients with COVID-19, one had leukemia, one advanced thyroid, and one bone marrow cancer and unfortunately the patients with leukemia and bone marrow cancer died. Meanwhile, two cases had a stroke and one of them was cured. One patient with a history of Tuberculosis died. Two cases had kidney disease and both of them died.

Our data showed significant difference between healthy and COVID-19 cases with regard to the symptoms like fever (P-value=**1.99E-12**), dyspnea (P-value= **2.99E-11**), weakness (P-value=**3.16E-11**), shivering (P-value=**1.01E-09**), fatigue (P-value=**6.60E-09**) and dry cough (P-value=**9.53E-09**). Indeed, symptoms such as anorexia (P-value=**1.68E-08**), anosmia (P-value=**5.46E-08**), ageusia (P-value=**1.19E-07**), dizziness (P-value=**2.10E-05**) and sweating (P-value=**2.15E-05**) showed significant difference between healthy vs. COVID-19 cases as well. All of these symptoms are more prevalent in COVID-19 affected cases than healthy subjects. While considering symptoms such as chest pain, sore throat and cough with sputum, there is no significant difference between healthy vs. COVID-19 cases (P-value of 0.411, 0.666 and 1, respectively). The significantly higher *mean* age is seen in COVID-19 cases (52.02 ± 17.63 -year-old) versus healthy subjects (44.13 ± 16.17 years old) (P-value=**1.54E-04**). Abnormal CRP is significantly more in COVID-19 affected cases compared to healthy subjects (P-value=**1.59E-09**). The O- BG (P-value=0.0066) is found to be lower for COVID-19 cases compared to normal subjects. There is no significant difference between healthy and COVID-19 cases regarding AB-, A-, A+, B+, AB+, B- and O+ BG carriers with P-values of 0.641, 0.6251, 0.6561, 0.7291, 0.8044, 1 and 1, respectively. Past history of BCG vaccination did not show any significant difference between COVID-19 and. healthy subjects (P-value= 0.1057). There is no significant difference between healthy and COVID-19 cases regarding DM (P-value= 0.269), immune deficiency (P=0.302), HEM (P-value= 0.377), rheumatologic diseases (P-value=0.377), corticosteroid therapy (P-value= 0.385), tobacco use (P-value= 0.38) and gender (P-value= 0.411). History of travel within the past *three* months showed no significant difference between the two classes (P-value= 0.546). We observed no significant difference between healthy and COVID-19 cases with regard to asthma (P-value= 0.715), liver disease (P-value= 0.746), cancer (P-value= 0.754), heart disease (P-value= 1), kidney disease (P-value= 1) and organ transplant (P-value= 1). The summary of this data is shown in Table 1. Features with a significant relationship with COVID-19 are illustrated in Figure 1. Meanwhile, the age distribution and the number of different blood type groups of COVID-19 patients are shown in Figure 2. Figure 2(a) shows that the groups with the highest infection risk are people in the age between 25 and 55. They are active labor force of society and have higher interaction with others. It is clear from Figure 2(b) that the negative blood groups are infected extremely less than positive groups. In positive blood groups, O+BG, A+BG, B+BG and AB+BG are more infected, respectively.

We observed a significant association between older age (P-value=**2.82E-05**), history of heart disease (P-value=**0.00654**), and history of cancer (P-value=**0.012863**) with COVID-19 mortality compared to healthy subjects. Carriers of O+BG showed protective features against COVID-19 with mortality (P-value=**0.0057**). Regarding symptoms, anosmia (P-value=**0.010612**), dry cough (P-value=**0.011324**), ageusia (P-value=**0.011741**), fever (P-value=**0.024933**) and anorexia (P-value=**0.038981**) are significantly related to COVID-19 with mortality compared to healthy subjects. Other features did not show a significant relationship with COVID-19 with mortality. The summary of this data is shown in Table 2. Features with a significant relationship with mortality in COVID-19 are shown in Figure 3. The age distribution of died patients because of COVID-19 is illustrated in Figure 4. According to this figure, although most in the

infected people are in the range of 25 and 55, the mortality rate is so low. There is no mortality in the age between 40 and 60. But it does not mean that the youth are completely immune from death. There are 2 cases died in the range of 30 and 40. Although the infection rate is not high between older people, their mortality rate is high.

Table 1. Clinical characteristics of COVID-19 patients

Feature	Covid-19	Healthy	P-Value
'Fever'	50	15	1.99E-12
'dyspnea'	61	29	2.99E-11
'Weakness'	34	5	3.16E-11
' Shivering '	32	6	1.01E-09
'CRP'	84	66	1.59E-09
'Fatigue'	38	12	6.60E-09
'Dry Cough'	55	29	9.53E-09
'Anorexia'	26	4	1.68E-08
'Anosmia'	33	10	5.46E-08
'Ageusia'	31	9	1.19E-07
' Dizziness '	11	0	2.10E-05
'Sweating'	15	2	2.15E-05
'Age'	52.02 ± 17.63	44.13 ± 16.17	1.54E-04
'Blood Type'			
O-	1	15	0.0066
AB-	2	2	0.641
A-	1	4	0.6524
A+	24	34	0.6561
B+	16	23	0.7291
AB+	6	12	0.8044
B-	1	2	1
O+	35	55	1
BCG Vaccine	88	158	0.1057
'Diabetes'	10	24	0.269539
'Immunodeficiency'	0	4	0.302357
'HEM'	3	2	0.37745
'Rheumatological Disease'	3	2	0.37745
'Corticosteroids'	1	0	0.38558
'Tobacco'	1	0	0.38558
'Gender'			0.4116
Male	62	80	
Female	61	116	
'Chest Pain'	1	5	0.411622
'Traveling In Past 3 Months Ago'	6	6	0.546959
'Sore Throat'	8	16	0.666779

'Asthma'	2	6	0.715367
'Liver Disease'	3	7	0.746248
'Cancer'	5	6	0.754812
'Heart Disease'	12	20	1
'kidney Disease'	5	8	1
'transplant'	0	1	1
'Cough With Sputum'	2	4	1

Table 2. Clinical characteristics of COVID-19 patients with mortality.

Feature	Dead	Alive	P-Value
'Age'	71.13±16.89	49.21±15.97	2.82E-05
'Blood Type'			
O+	0	35	0.0057
A+	4	20	0.4897
AB+	0	6	1
AB-	0	2	1
A-	0	1	1
B+	2	14	1
B-	0	1	1
O-	0	1	1
'Heart Disease'	5	7	0.00654
'Anosmia'	0	33	0.010612
'Dry Cough'	2	53	0.011324
'Ageusia'	0	31	0.011741
'Cancer'	3	2	0.012863
'Fever'	2	48	Anorexia
'Anorexia'	0	26	0.038981
'Respiratory Disease'	4	10	0.068973
'CRP'	7	77	0.0751066
'Diabetes'	3	7	0.1043992
'kidney .Disease'	2	3	0.112073
'Sweating'	0	15	0.211765
'Chest Pain'	0	16	0.214526
'Gender'			0.270425
Male	10	52	
Female	5	56	
'dyspnea'	5	56	0.270425
'BCG Vaccine'	4	84	0.3238626
'HEM'	1	2	0.325374
'Shivering'	2	30	0.349559

'Dizziness'	0	11	0.356602
'Nausea_Diarrhea'	0	11	0.356602
'Fatigue'	3	35	0.389313
'Sore Throat'	0	8	0.593884
'Blood Pressure'	0	9	0.5987395
'Weakness'	3	31	0.758468
'Traveling In Past 3 Month Ago'	0	6	1
'Asthma'	0	2	1
'Corticosteroids'	0	1	1
'Liver Disease'	0	3	1
'Rheumatological Disease'	0	3	1
'Cough With Sputum'	0	2	1
'Eczema'	0	3	1
'Conjunctivitis'	0	2	1
'Tobacco'	0	1	1
'Chest Pain'	0	1	1

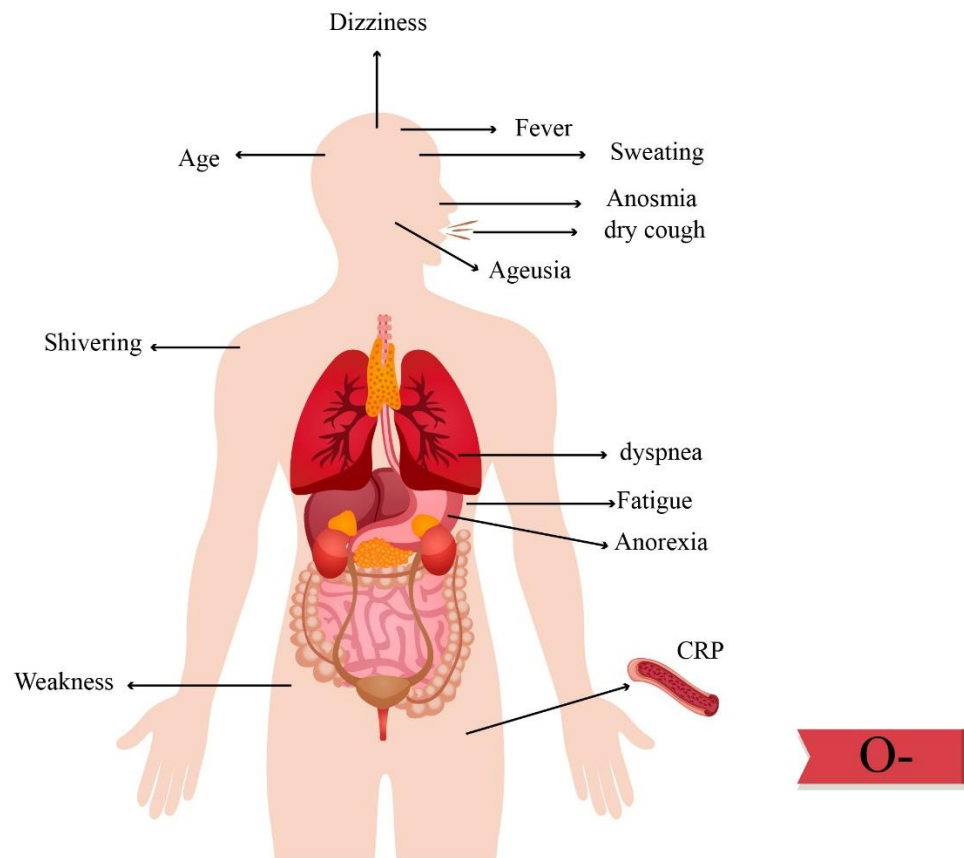


Figure 1. Features with a significant relationship with COVID-19

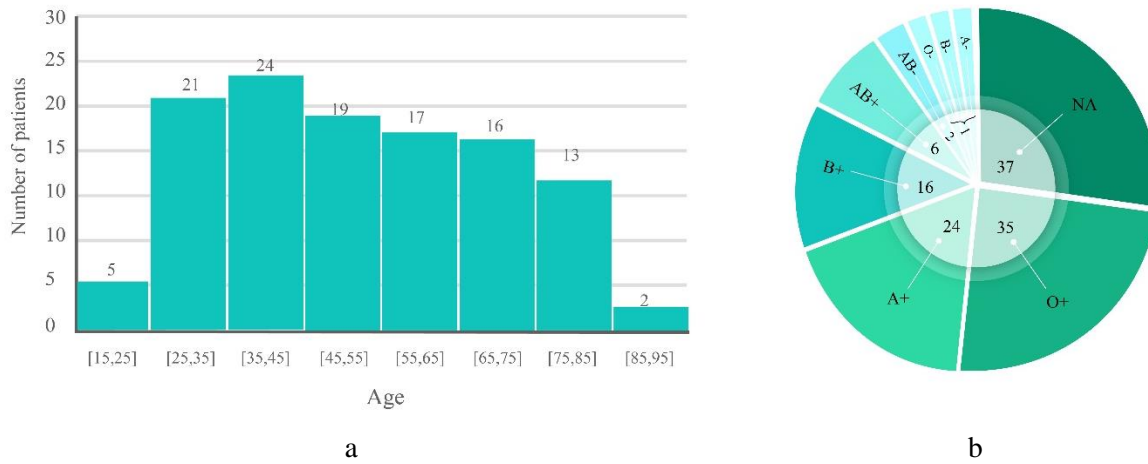


Figure 2. a) The age distribution of COVID-19 patients. b) Blood Types of COVID-19 Patients

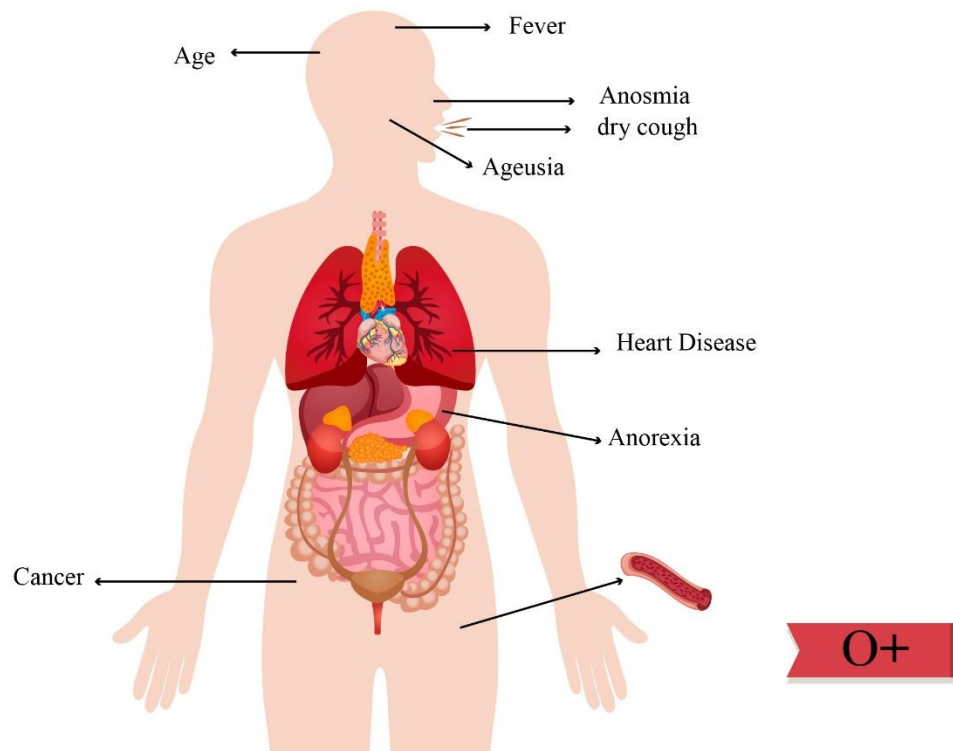


Figure 3. Features with a significant relationship with mortality in COVID-19

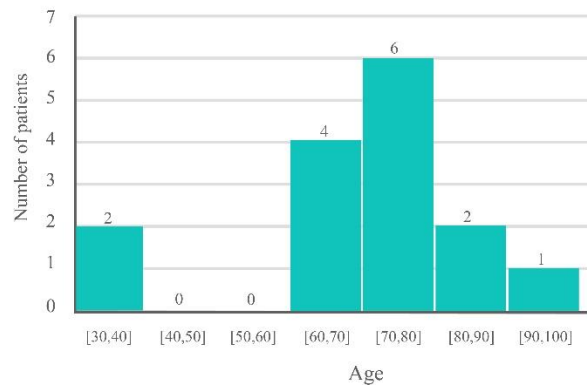


Figure 4. Age distribution of patients died because of COVID-19

Discussion

The main findings of our study are the significant association between symptoms such as fever, dyspnea, weakness, shivering, fatigue, dry cough, anorexia, anosmia, ageusia, dizziness, and sweating with COVID-19. We also observed an association between higher mean age and abnormal CRP in COVID-19 patients. Interestingly, O- BG showed a protective effect against the affliction of COVID-19. Also, we showed a relationship between older age, history of heart disease and cancer and COVID-19 related mortality. Development of symptoms such as anosmia, dry cough, ageusia, fever and anorexia are also predictors of mortality of COVID-19 cases. O+BG is a protective factor against COVID-19 related mortality.

In our study, fever is the most significantly associated symptom with COVID-19, which is in line with Zhang et al. [19] and Chen et al. [20] findings. In contrast, Liang et al. [21], DeBiasi et al. [22], Tian et al. [23], Zho et al. [24], and Qin et al. [25] found a non-significant association between fever and COVID-19. Indeed, dyspnea is a relevant symptom with COVID-19 that is in parallel with Tian et al. [23], DeBiasi et al. [22] and Qin et al. [25] but is in contrast with the findings of Liang et al. [21] and Yan et al. [26]. Dizziness is associated with COVID-19 in our study, which is similar to the findings of Zhou et al. [27] and Zhang et al. [28]. But Shi et al. [17], Chen et al. [20] and Liang et al. [21] found no association with this. We did not find study regarding sweating, and to best of our knowledge, this is the first work to report this. Nikpouraghdam et al. [29] suggested an association between weakness and COVID-19 that is the same with our data but is in contrast with the findings of Shi et al. [17]. Shivering is observed in the cohort of COVID-19, which is reported by Zhu et al. [30] too. Fatigue is significantly related with COVID-19 in our cohort which confirms with the findings of Qin et al. [25] but is in contrast to the findings of Liang et al. [21], Tian et al. [23], Lei et al. [31], and Yan et al. [32]. A dry cough is reported by Du et al. [33] to be related with COVID-19, which is similar with our finding, while such an association is not found by Qin et al. [25], Lei et al. [31] and Shi et al. [17]. Anorexia is found to be a significant symptom for COVID- in our study. The association between anorexia and COVID-19 in our study is similar to Zhang et al. [19] and Chen et al. [20] but is not in line with the findings of Shi et al. [17], Lei et al. [31] and Qin et al. [25]. Anosmia is associated with COVID-19 in our cohort, which confirms with the findings of Yan et al. [26], Bagheri et al. [34] and Lee et al. [35]. Yan et al. [26] and Lee et al. [35] also introduced ageusia as an associated symptom with COVID-19 that is in line with our findings.

Regarding the association between age and COVID-19, we observed old age, as an indicator which is in line with Fan et al. [36], but is in contrast with the findings of Fu et al. [37], Fang et al. [38] and Omrani-Nava et al. [39], who did not find a significant association between age and COVID-19. This discrepancy could be explained by different demographic features (symptoms). We observed elevated CRP as a related feature with COVID-19 in our investigation that is parallel with Fu et al. [37] and is in contrast with the findings of Omrani-Nava et al. [39]. BCG vaccination showed no significant relationship between COVID-19 versus. Healthy subjects in our cohort that is parallel with the findings of Li et al. [40] and Hamiel et al. [10] and in contrast to Dayal et al. [41].

Currently, there are additional data regarding predictor features of mortality related to COVID-19. Interestingly, some features with no obvious relationship with COVID-19 infection are associated with COVID-19 related mortality. O+BG, history of heart disease, and cancer are with COVID-19 infection showed a significant relationship with COVID-19 related mortality. While the development of symptoms such as anosmia, dry cough, ageusia, fever, and anorexia are the predictors of both COVID-19 infection and mortality. Old age is a predictor of mortality in Zhou et al. [24] report, that is also observed in our finding. Zhou et al. [24] reported other predictors of mortality such as fever, fatigue, myalgia, nausea, vomiting, diarrhea, cough and sputum that are not mortality predictors in our cohort. Fever and dyspnea are also considered as predictors of mortality by Iftime et al. [42] and Chen et al. [43], respectively, while we did not find an association between these symptoms with COVID-19 related mortality.

Interestingly, we observed more features associated with mortality in our cohort, but age seems to be the most important risk factor for COVID-19, and its induced mortality confirms with other published works [24, 42-45]. The predictive role of age is also confirmed by Sun et al., De Smet et al. [45] and Chen et al. [43]. In the old age, immune impairment can happen and also there is a possibility of respiratory disease. As mentioned above, comorbidities such as cancer and underlying heart diseases are associated with COVID-19 mortality. Iftime et al. [42] observed such an association with type 2 diabetes mellitus (DM) and cancer, but they negated the relationship between the history of heart disease and COVID-19 related mortality. Regarding comorbidities, Ruan et al. [46] and Chen et al. [43] demonstrated the history of heart disease and COVID-19 related mortality. Indeed, a history of cerebrovascular disease is also determinant in Chen et al. [43] cohort. Male gender is associated with COVID-19 related mortality in Li et al. [47] study, but we did not observe such an association in our cohort. Positive CRP is a predictor in Ruan et al. [46] study, while it did not have any association with mortality in our investigation.

The association between certain type of blood group and COVID-19 related mortality is the novel findings of our investigation. We observed a protective role for O-BG against COVID-19 in our cohort that is similar to the findings of Zietz et al. [48] and Guo et al. [49]. Currently, there is no clear reason for such an association between certain BG and risk of COVID-19, but it has been suggested that O-BG or in other words, lack of A or B antigens might not permit viral entrance to cells with a subsequent lower chance for carriers to get infected by this virus. Guillon et al. [50] specifically inhibited adhesion of SARS-CoV S protein-expressing cells into ACE2-expressing cell lines by anti-A antibodies. Interestingly, we demonstrated a lower chance of mortality for O+BG carriers and further study is needed to support this. Summary of common findings reported by other state-of-the-art studies is listed in appendix tables 3 and 4. In appendix table 3, the effective features on COVID-19 infection are listed while in appendix Table 4, the effective features on the mortality rate of COVID-19 patients are listed.

The novelty of our study is that, we have investigated the predictive role of many reported features (symptoms) for both COVID-19 and its related mortality using 319 Iranian cases. This may give a clear trend of the whole population since the enrolled cases are selected from different regions of Iran. Indeed, data of mortality predictors are not yet widely available, especially in Middle East countries. Another point is that a combination of these features can help to manage the patient better and the need for upgrading the features associated with COVI-19 related mortality is essential in this pandemic era.

In conclusion, this is one of the first researches that investigate the effect of risk factors in prediction, clinical outcomes and mortality of COVID-19. Our results indicate tht, risk factors like fever, dyspnea, weakness, shivering and CRP are the most important factors in predicting the disease while age, O+BG, heart disease, anosmia and dry cough are the most crucial factors in the mortality of patients. This study may prove helpful in early prediction and risk reduction of mortality in patients infected with COVID-19. Further studies with more longitudinal follow-ups are needed to confirm our findings.

References

- [1] M. M. Böhmer *et al.*, "Investigation of a COVID-19 outbreak in Germany resulting from a single travel-associated primary case: a case series," *The Lancet Infectious Diseases*, pp. 1-9, 2020, doi: [https://doi.org/10.1016/S1473-3099\(20\)30314-5](https://doi.org/10.1016/S1473-3099(20)30314-5).
- [2] N. Zhu *et al.*, "A Novel Coronavirus from Patients with Pneumonia in China, 2019," *New England Journal of Medicine*, vol. 382, no. 8, pp. 727-733, 2020, doi: 10.1056/NEJMoa2001017.
- [3] "WHO. Coronavirus disease 2019 (COVID-19) situation report—114. May 13, 2020. <https://www.who.int/emergencies/diseases/novelcoronavirus-2019/situation-reports>." (accessed).
- [4] L. Yan *et al.*, "A machine learning-based model for survival prediction in patients with severe COVID-19 infection," *MedRxiv*, pp. 1-25, 2020.
- [5] J. L. Andrews, L. Foulkes, and S.-J. Blakemore, "Peer Influence in Adolescence: Public-Health Implications for COVID-19," *Trends in Cognitive Sciences*, pp. 1-3, 2020, doi: <https://doi.org/10.1016/j.tics.2020.05.001>.
- [6] X. Yang *et al.*, "Clinical course and outcomes of critically ill patients with SARS-CoV-2 pneumonia in Wuhan, China: a single-centered, retrospective, observational study," *The Lancet Respiratory Medicine*, vol. 8, no. 5, pp. 475-481, 2020/05/01/ 2020, doi: [https://doi.org/10.1016/S2213-2600\(20\)30079-5](https://doi.org/10.1016/S2213-2600(20)30079-5).
- [7] K. Liu, Y. Chen, R. Lin, and K. Han, "Clinical features of COVID-19 in elderly patients: A comparison with young and middle-aged patients," *Journal of Infection*, vol. 80, no. 6, pp. e14-e18, 2020, doi: <https://doi.org/10.1016/j.jinf.2020.03.005>.
- [8] Y. Zheng *et al.*, "Epidemiological characteristics and clinical features of 32 critical and 67 noncritical cases of COVID-19 in Chengdu," *Journal of Clinical Virology*, vol. 127, p. 104366, 2020, doi: <https://doi.org/10.1016/j.jcv.2020.104366>.
- [9] Z. Fan *et al.*, "Clinical Features of COVID-19-Related Liver Functional Abnormality," *Clinical Gastroenterology and Hepatology*, vol. 18, no. 7, pp. 1561-1566, 2020, doi: <https://doi.org/10.1016/j.cgh.2020.04.002>.
- [10] U. Hamiel, E. Kozler, and I. Youngster, "SARS-CoV-2 Rates in BCG-Vaccinated and Unvaccinated Young Adults," *JAMA*, vol. 323, no. 22, pp. 2340-2341, 2020, doi: 10.1001/jama.2020.8189.
- [11] F. Latif *et al.*, "Characteristics and Outcomes of Recipients of Heart Transplant With Coronavirus Disease 2019," *JAMA Cardiology*, pp. 1-5, 2020, doi: 10.1001/jamacardio.2020.2159.
- [12] C. Wu *et al.*, "Risk Factors Associated With Acute Respiratory Distress Syndrome and Death in Patients With Coronavirus Disease 2019 Pneumonia in Wuhan, China," *JAMA Internal Medicine*, pp. 1-10, 2020, doi: 10.1001/jamainternmed.2020.0994.
- [13] C. Rothe *et al.*, "Transmission of 2019-nCoV Infection from an Asymptomatic Contact in Germany," *New England Journal of Medicine*, vol. 382, no. 10, pp. 970-971, 2020, doi: 10.1056/NEJMc2001468.
- [14] T. J. Oxley *et al.*, "Large-Vessel Stroke as a Presenting Feature of Covid-19 in the Young," *New England Journal of Medicine*, vol. 382, no. 20, p. e60, 2020, doi: 10.1056/NEJMc2009787.
- [15] D. F. Gudbjartsson *et al.*, "Spread of SARS-CoV-2 in the Icelandic Population," *New England Journal of Medicine*, vol. 382, no. 24, pp. 2302-2315, 2020, doi: 10.1056/NEJMoa2006100.
- [16] L. Zhu *et al.*, "Association of Blood Glucose Control and Outcomes in Patients with COVID-19 and Pre-existing Type 2 Diabetes," *Cell Metabolism*, vol. 31, no. 6, pp. 1068-1077.e3, 2020, doi: <https://doi.org/10.1016/j.cmet.2020.04.021>.
- [17] H. Shi *et al.*, "Radiological findings from 81 patients with COVID-19 pneumonia in Wuhan, China: a descriptive study," *The Lancet Infectious Diseases*, vol. 20, no. 4, pp. 425-434, 2020, doi: [https://doi.org/10.1016/S1473-3099\(20\)30086-4](https://doi.org/10.1016/S1473-3099(20)30086-4).
- [18] G. D. S. Robert, "A Multiple Comparison Rank Sum Test: Treatments versus Control," *Biometrics*, vol. 15, no. 4, pp. 560-572, 1959, doi: 10.2307/2527654.
- [19] G. Zhang *et al.*, "Clinical features and short-term outcomes of 221 patients with COVID-19 in Wuhan, China," *Journal of Clinical Virology*, vol. 127, p. 104364, 2020, doi: <https://doi.org/10.1016/j.jcv.2020.104364>.
- [20] Q. Chen *et al.*, "Clinical characteristics of 145 patients with corona virus disease 2019 (COVID-19) in Taizhou, Zhejiang, China," *Infection*, pp. 1-9, 2020.
- [21] Y. Liang *et al.*, "Prevalence and clinical features of 2019 novel coronavirus disease (COVID-19) in the Fever Clinic of a teaching hospital in Beijing: a single-center, retrospective study," *medRxiv*, pp. 1-16, 2020.

- [22] R. L. DeBiasi *et al.*, "Severe COVID-19 in children and young adults in the Washington, DC metropolitan region," *The Journal of Pediatrics*, pp. 1-18, 2020.
- [23] S. Tian *et al.*, "Characteristics of COVID-19 infection in Beijing," *Journal of Infection*, vol. 80, no. 4, pp. 401-406, 2020, doi: <https://doi.org/10.1016/j.jinf.2020.02.018>.
- [24] F. Zhou *et al.*, "Clinical course and risk factors for mortality of adult inpatients with COVID-19 in Wuhan, China: a retrospective cohort study," *The Lancet*, vol. 395, no. 10229, pp. 1054-1062, 2020, doi: [https://doi.org/10.1016/S0140-6736\(20\)30566-3](https://doi.org/10.1016/S0140-6736(20)30566-3).
- [25] C. Qin *et al.*, "Dysregulation of Immune Response in Patients With Coronavirus 2019 (COVID-19) in Wuhan, China," *Clinical Infectious Diseases*, pp. 1-7, 2020, doi: 10.1093/cid/ciaa248.
- [26] C. H. Yan, F. Faraji, D. P. Prajapati, B. T. Ostrander, and A. S. DeConde, "Self-reported olfactory loss associates with outpatient clinical course in COVID-19," *International Forum of Allergy & Rhinology*, pp. 1-11, 2020, doi: 10.1002/alr.22592.
- [27] Z. Zhou, N. Zhao, Y. Shu, S. Han, B. Chen, and X. Shu, "Effect of Gastrointestinal Symptoms in Patients With COVID-19," (in eng), *Gastroenterology*, vol. 158, no. 8, pp. 2294-2297, 2020, doi: 10.1053/j.gastro.2020.03.020.
- [28] J. Zhang *et al.*, "Risk factors for disease severity, unimprovement, and mortality in COVID-19 patients in Wuhan, China," *Clinical Microbiology and Infection*, vol. 26, no. 6, pp. 767-772, 2020, doi: <https://doi.org/10.1016/j.cmi.2020.04.012>.
- [29] M. Nikpouraghdam *et al.*, "Comparison of Clinical, Laboratory and Radiological Findings in Iranian Smokers and non-Smokers Patients with COVID-19: A Case Control Study," *Research Square*, pp. 1-16, 2020, doi: <https://doi.org/10.21203/rs.3.rs-34243/v1>.
- [30] J. Zhu *et al.*, "Clinicopathological characteristics of 8697 patients with COVID-19 in China: a meta-analysis," *Fam Med Community Health*, vol. 8, no. 2, p. e000406, 2020, doi: 10.1136/fmch-2020-000406.
- [31] S. Lei *et al.*, "Clinical characteristics and outcomes of patients undergoing surgeries during the incubation period of COVID-19 infection," *EclinicalMedicine*, vol. 21, p. 100331, 2020, doi: <https://doi.org/10.1016/j.eclinm.2020.100331>.
- [32] C. H. Yan, F. Faraji, D. P. Prajapati, C. E. Boone, and A. S. DeConde, "Association of chemosensory dysfunction and COVID-19 in patients presenting with influenza-like symptoms," *International Forum of Allergy & Rhinology*, pp. 1-8, 2020, doi: 10.1002/alr.22579.
- [33] W. Du *et al.*, "Clinical characteristics of COVID-19 in children compared with adults in Shandong Province, China," *Infection*, vol. 48, no. 3, pp. 445-452, 2020, doi: 10.1007/s15010-020-01427-2.
- [34] S. H. R. Bagheri *et al.*, "Coincidence of COVID-19 epidemic and olfactory dysfunction outbreak," *medRxiv*, p. 2020.03.23.20041889, 2020, doi: 10.1101/2020.03.23.20041889.
- [35] Y. Lee, P. Min, S. Lee, and S. W. Kim, "Prevalence and Duration of Acute Loss of Smell or Taste in COVID-19 Patients," *J Korean Med Sci*, vol. 35, no. 18, pp. e174-e174, 2020, doi: 10.3346/jkms.2020.35.e174.
- [36] B. E. Fan *et al.*, "Hematologic parameters in patients with COVID-19 infection," *American journal of hematology*, vol. 95, no. 6, pp. E131-E134, 2020.
- [37] J. Fu *et al.*, "The clinical implication of dynamic neutrophil to lymphocyte ratio and D-dimer in COVID-19: A retrospective study in Suzhou China," *Thrombosis Research*, vol. 192, pp. 3-8, 2020, doi: <https://doi.org/10.1016/j.thromres.2020.05.006>.
- [38] X. Fang *et al.*, "Low-dose corticosteroid therapy does not delay viral clearance in patients with COVID-19," *J Infect*, vol. 81, no. 1, pp. 147-178, 2020, doi: 10.1016/j.jinf.2020.03.039.
- [39] V. Omrani-Nava *et al.*, "Evaluation of Hepatic Enzymes Changes and Association with Prognosis in COVID-19 Patients," (in en), *Hepat Mon*, Research Article vol. 20, no. 4, p. e103179, 2020, doi: 10.5812/hepatmon.103179.
- [40] Y. Li, S. Zhao, Z. Zhuang, P. Cao, L. Yang, and D. He, "The correlation between BCG immunization coverage and the severity of COVID-19," *Available at SSRN 3568954*, pp. 1-6, 2020.
- [41] D. Dayal and S. Gupta, "Connecting BCG vaccination and COVID-19: additional data," *Medrxiv*, 2020.
- [42] S. Iftime *et al.*, "Risk factors associated with mortality in hospitalized patients with SARS-CoV-2 infection. A prospective, longitudinal, unicenter study in Reus, Spain," *bioRxiv*, 2020.
- [43] R. Chen *et al.*, "Risk Factors of Fatal Outcome in Hospitalized Subjects With Coronavirus Disease 2019 From a Nationwide Analysis in China," *Chest*, 2020/04/15/ 2020, doi: <https://doi.org/10.1016/j.chest.2020.04.010>.
- [44] H. Sun *et al.*, "Risk Factors for Mortality in 244 Older Adults With COVID-19 in Wuhan, China: A Retrospective Study," *Journal of the American Geriatrics Society*, vol. 68, no. 6, pp. E19-E23, 2020, doi: 10.1111/jgs.16533.

- [45] R. De Smet *et al.*, "Frailty and mortality in hospitalized older adults with COVID-19: retrospective observational study," *Journal of the American Medical Directors Association*, 2020/06/09/ 2020, doi: <https://doi.org/10.1016/j.jamda.2020.06.008>.
- [46] Q. Ruan, K. Yang, W. Wang, L. Jiang, and J. Song, "Clinical predictors of mortality due to COVID-19 based on an analysis of data of 150 patients from Wuhan, China," *Intensive Care Medicine*, vol. 46, no. 5, pp. 846-848, 2020/05/01 2020, doi: 10.1007/s00134-020-05991-x.
- [47] X. Li *et al.*, "Risk factors for severity and mortality in adult COVID-19 inpatients in Wuhan," *Journal of Allergy and Clinical Immunology*, 2020/04/12/ 2020, doi: <https://doi.org/10.1016/j.jaci.2020.04.006>.
- [48] M. Zietz and N. P. Tatonetti, "Testing the association between blood type and COVID-19 infection, intubation, and death," *medRxiv*, pp. 1-17, 2020.
- [49] W. Guo *et al.*, "Diabetes is a risk factor for the progression and prognosis of COVID-19," *Diabetes/Metabolism Research and Reviews*, p. e3319, 2020, doi: 10.1002/dmrr.3319.
- [50] P. Guillon *et al.*, "Inhibition of the interaction between the SARS-CoV Spike protein and its cellular receptor by anti-histo-blood group antibodies," *Glycobiology*, vol. 18, no. 12, pp. 1085-1093, 2008, doi: 10.1093/glycob/cwn093.
- [51] J. Zhao *et al.*, "Relationship between the ABO Blood Group and the COVID-19 Susceptibility," *medRxiv*, pp. 1-18, 2020.
- [52] Z. Zheng *et al.*, "Risk factors of critical & mortal COVID-19 cases: A systematic literature review and meta-analysis," *Journal of Infection*, pp. 1-10, 2020, doi: <https://doi.org/10.1016/j.jinf.2020.04.021>.
- [53] A. Guertler *et al.*, "Onset of occupational hand eczema among healthcare workers during the SARS-CoV-2 pandemic: Comparing a single surgical site with a COVID-19 intensive care unit," *Contact Dermatitis*, pp. 1-7, 2020, doi: 10.1111/cod.13618.
- [54] B. Wang, R. Li, Z. Lu, and Y. Huang, "Does comorbidity increase the risk of patients with COVID-19: evidence from meta-analysis," *Aging (Albany NY)*, vol. 12, no. 7, pp. 6049-6057, 2020, doi: 10.18632/aging.103000.
- [55] Y. Feng *et al.*, "COVID-19 with Different Severities: A Multicenter Study of Clinical Features," *Am J Respir Crit Care Med*, vol. 201, no. 11, pp. 1380-1388, 2020, doi: 10.1164/rccm.202002-0445oc.
- [56] J. E. Siegler, M. E. Heslin, L. Thau, A. Smith, and T. G. Jovin, "Falling stroke rates during COVID-19 pandemic at a comprehensive stroke center: Cover title: Falling stroke rates during COVID-19," *Journal of Stroke and Cerebrovascular Diseases*, vol. 29, no. 8, p. 104953, 2020, doi: <https://doi.org/10.1016/j.jstrokecerebrovasdis.2020.104953>.
- [57] C. Chen *et al.*, "Favipiravir versus arbidol for COVID-19: a randomized clinical trial," *MedRxiv*, pp. 1-30, 2020.
- [58] J. A. W. Gold *et al.*, "Characteristics and Clinical Outcomes of Adult Patients Hospitalized with COVID-19 - Georgia, March 2020," *MMWR Morb Mortal Wkly Rep*, vol. 69, no. 18, pp. 545-550, 2020, doi: 10.15585/mmwr.mm6918e1.
- [59] M. R. Pereira *et al.*, "COVID-19 in solid organ transplant recipients: Initial report from the US epicenter," *American Journal of Transplantation*, 2020, doi: 10.1111/ajt.15941.
- [60] G. J. Webb, A. M. Moon, E. Barnes, A. S. Barritt, and T. Marjot, "Determining risk factors for mortality in liver transplant patients with COVID-19," *Lancet Gastroenterol Hepatol*, vol. 5, no. 7, pp. 643-644, 2020, doi: 10.1016/S2468-1253(20)30125-4.
- [61] R. Fadel *et al.*, "Early Short Course Corticosteroids in Hospitalized Patients with COVID-19," *medRxiv*, 2020.
- [62] Y. Liu *et al.*, "Neutrophil-to-lymphocyte ratio as an independent risk factor for mortality in hospitalized patients with COVID-19," *Journal of Infection*, vol. 81, no. 1, pp. e6-e12, 2020, doi: <https://doi.org/10.1016/j.jinf.2020.04.002>.

Appendix

Table 3: Summary of common findings reported by other state-of-the-art studies.

Ref No.	Population of Samples	Country	Feature Name	P-value
Fan et al. [36]	69	Singapore	Age	0.02
			Hb (g/dL)l	0.07
			WBC (x10 ⁹ /L)	0.87
			ALC (x10 ⁹ /L)	0.0002
			ANC (x10 ⁹ /L)	0.17
			Platelets (x10 ⁹ /L)	0.81
			LDH (U/L)	0.003
Fu et al. [37]	75	China	Age	0.095
			CRP (mg/L)	0.001
			WBC count (10 ⁹ /L)	0.026
			Neutrophil count (10 ⁹ /L)	0.008
			Lymphocyte level (10 ⁹ /L)	0.009
			NLR	0.001
			D-dimer level (µg/L)	0.001
			Hemoglobin (%)	0.548
Omrani-Nava et al. [39]	279	Iran	CRP (positive)	0.248
			Age	0.125
			Lymphopenia	0.676
			WBC, per mm ³	0.473
			Lymphocyte, per mm ³	< 0.001
			Hemoglobin, g/dL	0.421
			Platelet, per mm ³	< 0.001
Zhao et al. [51]	1775	China	Blood Group A	<0.001
			Blood Group B	0.240
			Blood Group AB	0.291
			Blood Group O	<0.001
Zietz et al. [48]	1,559	The U.S. and China	Blood Group A	0.009
			Blood Group B	0.446
			Blood Group AB	0.033
			Blood Group O	0.036
Guo et al. [49]	174	China	Red blood cells (×10 ¹² /L)	<.01
			Haemoglobin (g/dL)	<.01
			C-reactive protein (mg/L)	<.01
			Lymphocytes (×10 ⁹ /L)	<.01
			Neutrophils (×10 ⁹ /L)	0.02
			Immunodeficiency	0.294
			Chronic liver disease	0.288
Chronic kidney disease	0.373			
Li et al. [40]	NA	91 countries	BCG	0.3948
Dayal et al. [41]	NA	High Burden Countries: 12 Countries that follow BCG vaccination:12	BCG	<0.0001
Hamiel et al. [10]	297340 (1979-1981: BCG vaccinated) 301600 (1983-1985 : BCG unvaccinated)	Israel	BCG	0.09
Zheng et al. [52]	3027	Different countries	respiratory disease	< 0.00001
Liang et al. [21]	88	China	Fever	0.816
			Cough	0.001
			Dyspnea or shortness of breath	0.174
			Expectoration	0.354
			Fatigue	0.175
			Sore throat	0.193
			Nasal symptoms	0.219
			Headache or dizziness	0.153
Diarrhea	0.343			
DeBiasi et al. [22]	177	The U.S.	Fever	0.06
			Sore throat or congestion	0.004

			Cough	0.003
			Shortness of breath	0.04
			Diarrhea or vomiting	0.89
			Chest Pain	0.22
			Loss of Sense of Taste and/or Smell	0.28
			Headache	0.01
Tian et al. [23]	262	China	Fever	0.752
			Cough	0.201
			Fatigue	0.288
			Dyspnea	<0.001
			Headache	0.992
			Respiratory rate	0.333
Qin et al. [25]	452	China	Fever	0.232
			Dry cough	1.000
			Expectoration	0.843
			Shortness of breath	<.001
			Myalgia	0.407
			Confusion	0.301
			Headache	0.068
			Dizziness	0.112
			Fatigue	0.014
			Nausea and vomiting	0.092
			Diarrhea	0.913
			Abdominal pain	0.073
			Anorexia	0.234
Lei et al. [31]	34	China	Dry cough	0.51
			Anorexia	0.63
			Nausea	> 0.99
			Diarrhea	> 0.99
			C-reactive protein, mg/L	0.55
			Fatigue	0.70
			Dizziness or Headache	0.41
			Chronic kidney disease	0.44
			Cancer	0.62
			Diabetes	0.78
Yan et al. [26]	262	The U.S.	Ageusia	<0.001
			Anosmia	<0.001
			Headache	0.019
			Dyspnea	0.14
			Diarrhea	0.001
			Nausea	0.004
Yan et al. [32]	128	The U.S.	Anosmia	<0.001
			Fatigue	0.19
			Dysgeusia	<0.001
			Headache	0.86
			Cough	0.14
			Cardiac disease	0.71
			Cancer	0.62
			Diabetes	0.78
Bagheri et al. [34]	10069	Iran	Anosmia	<0.001
Lee et al. [35]	3,191	Korea	Anosmia	< 0.001
			Ageusia	< 0.001
Shi et al. [17]	81	China	Anorexia	0.6296
			Headache	0.8645
			Diarrhea	0.913
			Nausea and vomiting	0.092
			Dry cough	1.00
			Headache	0.068
			Dizziness	0.8056
			Weakness	0.4065
Guertler et al. [53]	114	Germany	Hand eczema	0.99
Zhang et al. [19]	221	China	Sex	0.011
			Fever	0.006
			Anorexia	<0.001
Chen et al. [20]	145	China	Fever	0.01
			Anorexia	0.01

			Dizziness	0.24
Du et al. [33]	67	China	Dry cough	0.03
Zhu et al. [30]	4394	China	Shivering	<0.001
Nikpouraghdam et al. [29]	120	Iran	Weakness	0.031
Wang et al. [54]	1480	China	Liver disease	0.326
Feng et al. [55]	476	China	Chest pain	0.13
Siegler et al. [56]	328	United States	Prior stroke	0.90
Chen et al. [57]	236	China	Sore throat	0.1726
Gold et al. [58]	305	Georgia	Asthma	0.12
			Rheumatologic or autoimmune condition	0.22
			Immunocompromising conditions or therapies	0.91
Pereira et al. [59]	90	United States	Organ transplant Kidney	0.90
Webb et al. [60]	39	Different Countries	liver transplant	0.580
Fang et al. [38]	78	China	corticosteroid use and Age General group (n = 55)	0.959
			Severe group (n = 23)	0.33
Fadel et al. [61]	213	United States	Smoking history	0.0615
Liu et al. [7]	56	China	Cough with sputum	0.284
Zhou et al. [27]	254	China	Dizziness	0.032
Zhang et al. [28]	663	China	Dizziness	0.009
Liu et al. [62]	245	China	Dizziness	0.490

Abbreviations used in table: Hemoglobin (Hb); white blood cell (WBC); absolute lymphocyte count (ALC); absolute monocyte count (AMC); absolute neutrophil count (ANC); lactate dehydrogenase (LDH)

Table 4. Some of the common clinical characteristics of COVID-19 patients with fatality.

Ref No.	Population of Samples	Country	Feature Name	P-value
Zhou et al. [24]	171	China	Age	0-0043
			Coronary heart disease	0-48
			Fever (temperature $\geq 37.3^{\circ}\text{C}$)	0.94
			Cough	0.15
			Sputum	0.55
			Myalgia	0-93
			Fatigue	0-33
			Diarrhoea	0-67
			Nausea or vomiting	0-40
			White blood cell count, $\times 10^9$ per L	<0-0001
			Lymphocyte count, $\times 10^9$ per L	<0-0001
			Haemoglobin, g/L	0-30
			Anaemia	0-0094
Platelet count, $\times 10^9$ per L	<0-0001			
Sun et al. [44]	244	China	Age	0.037
			Sex	0.270
			SpO ₂ , %	0.565
			Heart rate, beats/min	0.977
			Respiratory rate, breaths/min	0.181
			Consciousness disorders (disorders vs clear)	0.827
			Hypertension (yes vs no)	0.744
			Previous respiratory diseases (yes vs no)	0.245
			WBC count, $\times 10^9/\text{L}$	0.052
			LYM count, $\times 10^9/\text{L}$	0.001
			NT-proBNP, $\times 10^2$ pg/mL	0.514
			PCT, ng/mL	0.791
			hs-TnI, pg/mL	0.065
			D-dimer, $\mu\text{g}/\text{mL}$ FEU	0.278
			ALT, U/L	0.231
			AST, U/L	0.137
Creatinine, $\mu\text{mol}/\text{L}$	0.340			
eGFR, mL/min/1.73 m ²	0.543			
hs-CRP, mg/L	0.122			
De Smet et al. [45]	81	Belgium	Age	0.03
Iftime et al. [42]	188	Spain	Age	<0.001
			Fever	0.046
			Cough	0.901
			Diarrhea	0.232
			Gender	0.084
			Smoking status	0.471
			Cardiovascular diseases	0.714
			Chronic liver diseases	0.457
			Chronic lung diseases	0.658
			Cancer	0.009
			Chronic kidney diseases	0.576
Chen et al. [43]	1,590	China	Age (≥ 75 vs <65)	< .001
			Age(65-74 vs <65)	0.018
			coronary heart disease	0.032
			cerebrovascular disease	0.037
			Dyspnea	0.008
Creatinine, $\mu\text{mol}/\text{L}$	0.093			
Ruan et al. [46]	150	China	cardiovascular disease	<0.001
			C-reactive protein	<0.001
			Sex	0.43
			Age	<0.001
Li et al. [47]	269	China	Sex, male vs female	0.032

Abbreviations: ALT, alanine aminotransferase; AST, aspartate aminotransferase; CI, confidence interval; eGFR, estimated glomerular filtration rate; hs-CRP, high-sensitivity C-reactive protein; hs-TnI, high-sensitivity cardiac troponin I; LYM, lymphocyte; NT-proBNP, amino-terminal pro-brain natriuretic peptide; OR, odds ratio; PCT, procalcitonin; SpO₂, oxygen saturation; WBC, white blood cell; FEU, fibrinogen equivalent units.

