

# Initial characterisation of ELISA assays and the immune response of the clinically correlated SARS-CoV-2 biobank “SERO-BL-COVID-19” collected during the pandemic onset in Switzerland

Hans-Michael Kaltenbach,<sup>a,1</sup> Fabian Rudolf,<sup>a,b,1,\*</sup> Janina Linnik<sup>a</sup>, Julia Deichmann<sup>a</sup>, Therese Ruf<sup>c</sup>, Raffaele Altamura<sup>d</sup>, Edo Kapetanovic<sup>d</sup>, Derek Mason<sup>d</sup>, Bastian Wagner<sup>d</sup>, Thomas Goetz<sup>e</sup>, Lukas Mundorff<sup>e</sup>, Karin Stoll-Rudin<sup>c</sup>, Christina Krebs<sup>c</sup>, Tanja Renz<sup>e</sup>, Thomas Hochueli<sup>f</sup>, Sergio Haymoz<sup>f</sup>, Markus Hosch<sup>g</sup>, Nadine Périat<sup>g</sup>, Michèle Richert<sup>g</sup>, Sergio Sesia<sup>h,i</sup>, Daniel Paris<sup>c</sup>, Carlos Beat Quinto<sup>c,g,j,k,l</sup>, Nicole M. Probst-Hensch<sup>c</sup>, Christoph Niederhauser<sup>n,o</sup>, Sai Reddy<sup>d</sup>, Beatrice Nickel<sup>c</sup>, Miodrag Savic<sup>g,l,m,\*</sup>

<sup>a</sup>*D-BSSE ETH Zürich & Swiss Institute of Bioinformatics, Mattenstrasse 26, 4056 Basel, Switzerland*

<sup>b</sup>*Associated Member Cantonal Crisis Staff Basel-Landschaft, 4104 Liestal*

<sup>c</sup>*Swiss Tropical and Public Health Institute, Socinstrasse 57, 4051 Basel*

<sup>d</sup>*D-BSSE ETH Zürich, Mattenstrasse 26, 4056 Basel*

<sup>e</sup>*Canton Basel-Landschaft Medical Association, 4104 Liestal*

<sup>f</sup>*Office for Military Affairs and Civil Protection Canton Basel-Landschaft, 4104 Liestal*

<sup>g</sup>*Department of Health, Economics and Health Directorate Canton Basel-Landschaft, 4104 Liestal*

<sup>h</sup>*University of Berne, 3000 Berne*

<sup>i</sup>*University Hospital of Berne, 3000 Berne*

<sup>j</sup>*Department of Public Health, Health Professions and Medicines, 4000 Basel*

<sup>k</sup>*Swiss Medical Association*

<sup>l</sup>*University of Basel, 4000 Basel*

<sup>m</sup>*University Hospital of Basel, 4000 Basel*

<sup>n</sup>*Interregional Blood Transfusion SRC, 3000 Bern*

<sup>o</sup>*Institute for Infectious Diseases, University of Bern, 3000 Bern*

---

## Abstract

**Background** To accurately measure seroprevalance in the population, both

---

\*correspondence should be addressed to [fabian.rudolf@bsse.ethz.ch](mailto:fabian.rudolf@bsse.ethz.ch) or [miodrag.savic@usb.ch](mailto:miodrag.savic@usb.ch)

<sup>1</sup>these authors contributed equally

July 3, 2020

the expected immune response as well as the assay performances have to be well characterised. Here, we describe the collection and initial characterisation of a blood and saliva biobank obtained after the initial peak of the SARS-CoV-2 pandemic in Switzerland.

**Methods** Two laboratory ELISA assays measuring IgA & IgG (Euroimmun), and IgM & IgG (Epitope Diagnostics) were used to characterise the biobank collected from 349 re- and convalescent patients from the canton of Basel-Landschaft.

**Findings** The antibody response in terms of recognized epitopes is diverse, especially in oligosymptomatic patients, while the average strength of the antibody response of the population does correlate with the severity of the disease at each time point.

**Interpretation** The diverse immune response presents a challenge when conducting epidemiological studies as the used assays only detect ~90% of the oligosymptomatic cases. This problem cannot be rectified by using more sensitive assays or lower cut-offs as they concomitantly reduce specificity.

**Funding** Funding was obtained from the "Amt für Gesundheit" of the canton Basel-Landschaft, Switzerland.

*Keywords:* COVID-19, Serology, Biobank, Immune response, oligosymptomatic patients

---

## 1. Introduction

Effective host responses to viral infections, including those to coronaviruses, are driven by adaptive immunity [1]. For endemic or previously emerging coronaviruses, the antibody response has been correlated with protection from re-infection for a varying period of time. In SARS-CoV-2 infections, most studies on antibody kinetics are based on severe or hospitalized

7 patients, even though subclinical or even oligosymptomatic patients repre-  
8 sent the majority of cases. Less severe cases of SARS-CoV-2 (as well as other  
9 endemic CoVs) are associated with lower antibody responses, and therefore  
10 pose a challenge for accurate detection using serological assays.

11 However, one of the most important correlates of immunological pro-  
12 tection is the presence of neutralizing antibodies, which is preferably mea-  
13 sured by using functional assays with replication competent virus [2]. For  
14 COVID-19 patients, such assays are time consuming and must be conducted  
15 in Biosafety Level 3 facilities, which renders them infeasible for wide-scale  
16 testing. Some alternative functional assays are based on pseudotyped or  
17 chimeric viral particles [3], but these reagents are neither trivial to produce  
18 nor do they scale to large sample sizes. The most feasible alternative assays  
19 are therefore binding assays, such as enzyme-linked immunosorbent assays  
20 (ELISA), and preferably report on the quantity of antibodies binding to neu-  
21 tralizing epitopes such as the receptor binding domain (RBD) of the spike  
22 protein [4].

23 Current clinically approved ELISA tests either bind to the nucleocapsid  
24 (NCP) protein or (part of) the spike protein (which includes the RBD). Both  
25 of these proteins, but especially the NCP, are known to generate a strong  
26 host immune response in other beta-coronaviruses [5, 6]. In contrast, nearly  
27 all neutralising antibodies against SARS-CoV-2 discovered to date bind to  
28 the small RBD portion of the spike protein [7, 8], and currently available  
29 commercial assays indeed insufficiently predict neutralisation [2]. The pres-  
30 ence and characterization of antibody responses in COVID-19 patients by  
31 serological assays has been described in several reports [9, 10, 11, 12, 13, 14];  
32 a key observation is that across many patients, antibodies are detected at  
33  $\sim 10$  days post-onset of symptoms.

34 The performance of assays is characterized by their sensitivity and speci-  
35 ficity [15]. To-date, most commercial ELISA performance validations were  
36 obtained from biobanks relying on hospitalised patients; this positive patient  
37 cohort will likely have higher antibody levels than milder, non-hospitalized  
38 patients [16]. This is also observed for SARS-CoV-2 infections [17]. It is  
39 thus unclear if the available tests are sufficiently sensitive to also detect  
40 oligosymptomatic cases.

41 Here, we describe the collection and initial analysis of a blood biobank  
42 representative for the observed COVID-19 symptomatic range in the pop-  
43 ulation of Switzerland. The positive cohort in this biobank consists of 341  
44 samples obtained from participants determined to have SARS-CoV-2 (PCR-  
45 positive test) in various symptomatic and post-symptomatic stages. The  
46 negative cohorts include 115 samples obtained from PCR-negative tested  
47 participants, and 150 samples of blood donors from the 2016/17 flu sea-  
48 son. The distribution in age and disease severity in this biobank is similar  
49 to that reported for other areas in Western Europe. For each sample, we  
50 measured the antibody response toward the NCP and S1 proteins using the  
51 ELISA tests for IgM and IgG from Epitope Diagnostics and IgA and IgG  
52 from Euroimmun, and characterized the performance of these assays. The  
53 specificity of both the Euroimmun IgG and the Epitope Diagnostics IgM  
54 assays was close to 100%, while the other two tests showed specificities of  $\sim$   
55 96% and lower. The sensitivity of the IgA and IgG tests was only sufficient  
56 to detect  $\sim$  90% of the cases, while the IgM test only detected  $\sim$  50%. Pre-  
57 vious studies reported a low and late IgM response, especially in less severe  
58 COVID-19 patients [10, 11], which might partially explain the low IgM test  
59 sensitivity. Taken together, our data indicates that the immune response in  
60 oligosymptomatic patients is diverse and ill captured with the two employed

61 serological assays.

## 62 **2. Materials & methods**

### 63 *2.1. Ethics statement*

64 This study is part of the project 'COVID-19 in Baselland Investiga-  
65 tion and Validation of Serological Diagnostic Assays and Epidemiological  
66 Study of Sars-CoV-2 specific Antibody Responses (SERO-BL-COVID-19)'  
67 approved by the ethics board "Ethikkommission Nordwest- und Zentralschweiz  
68 (EKNZ)", Hebelstrasse 53, 4056 Basel representative of Swissethics under  
69 the number (2020-00816).

70 Every participant has received a written informed consent at least 24  
71 hours before participating in this study (attached original document in Ger-  
72 man language). The participants had to sign the written informed consent  
73 and needed to show it in order to be given access to the test facility. The  
74 participants could withdraw their participation at any time without stating  
75 any reason.

### 76 *2.2. Collection of samples*

#### 77 *2.2.1. Blood Collection*

78 Venous blood was taken by puncturing a disinfected cubital or similar  
79 area using a BD safety-lock system into a vacutainer. In total, 10–12 mL  
80 each for EDTA-blood serum was taken. The blood collection was performed  
81 by a medical assistant or nurse. After blood collection, the samples were  
82 either transferred to the diagnostic lab or directly processed on site in the  
83 make-shift laboratory.

84 *2.2.2. Saliva Collection*

85 Saliva was collected non-invasively using the dedicated Salivette tubes  
86 (Sarstedt Cat. # 51.1534). In short, the participant delivered saliva into an  
87 adsorbent filter, which was then placed by the participant in the Salivette  
88 tube. After handover to the medical staff, the saliva was centrifuged on site  
89 at 4°C using 1,000× g for 2 min to remove cells and debris. The tube was  
90 then rapidly frozen using a salted ice-water bath and stored at −20°C before  
91 transporting to the lab on dry ice and storage at −80°C until further use.

92 *2.2.3. Plasma and PBMC isolation and cell cryopreservation*

93 Density gradient separation was used in peripheral blood mononuclear  
94 cell (PBMC) isolation. 12 mL of fresh donor blood was received in 3× 4 mL  
95 plastic whole blood tubes with spray-coated K<sub>2</sub>EDTA BD Vacutainer™  
96 (Becton Dickinson, Cat. # 367844). The whole blood was diluted in 1:1 ratio  
97 with 12 mL of PBS (w/o Ca<sup>2+</sup> and Mg<sup>2+</sup>). The total volume of diluted blood  
98 (24 mL) was gently and slowly layered on 14 mL of Ficoll Lymphoprep™  
99 (STEMCELL, Cat. # 07861). Samples were centrifuged at 400× g 40 min,  
100 22°C, no brakes. 14 mL of plasma was transferred in a 15 mL conical tube  
101 and stored at 4°C. The layer of mononuclear cells was aspirated and trans-  
102 ferred in a 50 mL conical tube containing 25 mL of PBS (w/o Ca<sup>2+</sup> and  
103 Mg<sup>2+</sup>). Cells were washed 300× g 8 min, 22°C, with brakes. Washing was  
104 repeated with an additional 25 mL of PBS (w/o Ca<sup>2+</sup> and Mg<sup>2+</sup>). Mononu-  
105 clear cells were subsequently resuspended in 1 mL of freezing media (heat  
106 inactivated FBS supplemented with 10% DMSO) and aliquoted into two 1.5  
107 mL cryogenic tubes (Nalgene System, Thermo Scientific, Cat. # 5000-1020).  
108 The cryogenic tubes were put into freezing containers Mr.Frosty™ (Thermo  
109 Scientific, Cat. # 5100-0001) and the containers were immediately placed

110 into an  $-80^{\circ}\text{C}$  freezer for 24 hrs, and then transferred into a liquid nitrogen  
111 tank.

#### 112 *2.2.4. Point of care validation*

113 To perform the point of care test (POCT) validation, a capillary blood  
114 sample was taken from each subject by puncturing the end of a finger and  
115 taking the blood with a micro pipette. Immediately after collecting, the  
116 blood was put in the lateral flow chamber of the POCT and after 15 minutes  
117 the result was visually scored as positive or negative by the medical assistant.  
118 Additionally, the tests were imaged using a Nikon D5000 camera.

#### 119 *2.2.5. Blood donor cohort*

120 Samples from nonremunerated blood donors originate from the Swiss  
121 cantons of Thurgau, Basel, Bern, Waadt and Geneva, and were taken during  
122 the pre-pandemic period 16th and 17th December 2016. These samples were  
123 frozen as EDTA plasmas on microtiterplates for  $-20^{\circ}\text{C}$ .

#### 124 *2.3. ELISA analysis*

125 The following four commercially available immunoassays were charac-  
126 terized in the study: the Anti-SARS-CoV-2-ELISA-IgA (Euroimmun AG,  
127 Lübeck, # EI 2606-9601 A), the Anti-SARS-CoV-2-ELISA-IgAG (Euroim-  
128 mun AG, Lübeck, # EI 2606-9601 G), the EDI Novel Coronavirus COVID-  
129 19 IgM ELISA kit (Epitope Diagnostics, Inc., # KT-1033) and the EDI  
130 Novel Coronavirus COVID-19 IgG ELISA kit (Epitope Diagnostics, Inc., #  
131 KT-1032). All ELISA kits were CE and IVD labeled.

132 To enable a quantitative comparison between ELISA experiments, we  
133 calculated fold changes in OD relative to the assay- and run-specific cut-off

134 values ( $OD_{\text{sample}}/OD_{\text{cut-off}}$ ), where  $OD_{\text{cut-off}} = 1.1 \times OD_{\text{cal}}$  for both Euroim-  
135 mun ELISAs,  $OD_{\text{cut-off}} = (1.1 + 0.18) \times OD_{\text{NC}}$  for EDI IgG and  $OD_{\text{cut-off}} =$   
136  $(1.1 + 0.10) \times OD_{\text{NC}}$  for EDI IgM, where  $OD_{\text{cal}}$  and  $OD_{\text{NC}}$  are calibration  
137 respectively average negative control values as described by the manufac-  
138 turers. Note that fold changes are not comparable between Euroimmun and  
139 EDI ELISA test kits because the assays show large differences in dynamic  
140 range and saturation. Detailed calculation can be found in the supplemen-  
141 tary methods.

#### 142 *2.4. Statistical analysis*

143 Patient data and results of POCTs were originally stored in the RED-  
144 Cap database system of the Canton Hospital Basel-Landschaft. Results  
145 from ELISA tests were entered into Excel worksheets. All data were pre-  
146 processed and a common database created using in-house scripts in R [18].  
147 Statistical analysis and creation of figures and tables was carried out using R;  
148 binomial confidence intervals are 95%-Clopper-Pearson intervals calculated  
149 using `exactci()` from package `PropCIs` [19]. A refresher for the calculation  
150 of specificity and sensitivity calculation can be found in the supplementary  
151 methods.

#### 152 *2.5. Role of the funding source*

153 The sponsor had no role in study design; in the collection, analysis, and  
154 interpretation of data; in the writing of the report; or in the decision to  
155 submit the paper for publication.



### 156 **3. Results**

#### 157 *3.1. Study design & cohorts*

158 The goal of our study design was to collect a representative cohort of  
159 COVID-19 disease manifestation during the first wave of COVID-19 in the  
160 canton Basel-Landschaft, Switzerland. During the initial phase of the pan-  
161 demic, only people in risk groups showing symptoms were tested; later,  
162 testing was extended to all people showing symptoms and 5311 people had  
163 been tested in the canton at the beginning of study recruitment, with 802  
164 (15.1%) positive and 4509 (84.9%) negative PCR test results. The cases  
165 were mostly observed close to or in areas with a high frequency of commut-  
166 ing to the city of Basel, but the ratio of positive tests showed no apparent  
167 bias for or against rural communities.

168 All RT-PCR-tested individuals were eligible for participation except when  
169 they were <18 years of age, had a severely compromised immune system,  
170 were hospitalized at the time of sample collection, or were deceased. From  
171 these, 349 positive individuals committed to participating in the study,  
172 and 111 negative individuals were randomly selected. We aimed for suffi-  
173 cient sample size for two positive cohorts: an 'acute' cohort with diagnosed  
174 COVID-19 up to 12 days before study entry, and a 'convalescent' cohort  
175 with more than 12 days between positive diagnosis and study entry.

176 Individuals were continuously recruited during a 2 week window from 11.  
177 April 2020 to 22. April 2020 and visited the 'Abklärungsstation COVID-  
178 19' in Münchenstein, Switzerland. The medical history and the status were  
179 recorded in a doctors interview, the vital parameters were acquired, and  
180 saliva and blood samples were collected. All participants of the positive  
181 cohort were guided through the building, while the negative cohort was

182 examined in a make-shift field hospital erected next to the building to mini-  
183 mize the danger of infection with COVID-19. Participant characteristics are  
184 summarized in Table 1.

<b>Cohort</b>	PCR pos, $\leq$ 7d (N = 31)	PCR pos, $>$ 7d & $\leq$ 12d (N = 46)	PCR pos, $>$ 12d (N = 272)	PCR neg, $>$ 5d (N = 111)
<b>Sex</b>				
female	17 (55%)	25 (54%)	130 (48%)	63 (57%)
male	14 (45%)	21 (46%)	142 (52%)	48 (43%)
<b>Age</b>				
years, median (range)	45 (21-80)	51 (20-80)	51.5 (17-93)	48 (19-87)
<b>Weight</b>				
kg, median (range)	73 (51-110)	72 (40-109)	76 (49-135)	73 (47-130)
<b>Height</b>				
cm, median (range)	173.5 (157-187)	172 (150-191)	173 (72-198)	172 (149-195)
<b>SpO2</b>				
%, median (range)	98 (93-99)	98 (88-99)	98 (85-99)	98 (95-99)
<b>Total days ill</b>				
0-5 days	6 (19%)	1 (2%)	28 (10%)	—
5-10 days	15 (48%)	23 (50%)	146 (54%)	—
10-14 days	10 (32%)	22 (48%)	98 (36%)	—

Table 1: Characteristics of patients included in the study.

185        Distribution of ages and gender for the positive cohort are similar to the  
186 age and gender structure of the canton, except for the age between 40–65  
187 which are over-represented and >80 which are under-represented (Table 2  
188 and Supplementary Figure 1). From the 349 positive participants, 35 (10%)  
189 were bedridden during the acute disease, 62 (18%) required help for their  
190 daily activities, while 244 (72%) had no restrictions. Similar distributions  
191 are reported elsewhere. All age groups were affected equally, however severe  
192 cases were more pronounced in the older population. Increasing disease  
193 severity correlated with the experienced symptoms; bedridden cases suffered  
194 approximately 10 or more days, cases requiring help ~10 days, and the  
195 oligosymptomatic cases between 5 to 15 days.

	Age groups						
	15-19*	20-29	30-39	40-49	50-64	65-79	80+
<b>Overall</b>	5 (1.1%)	55 (12%)	64 (13.9%)	99 (21.5%)	159 (34.6%)	68 (14.8%)	10 (2.2%)
<b>Severity of illness</b>							
Not ill	1 (20%)	13 (24%)	23 (36%)	24 (24%)	29 (18%)	18 (26%)	3 (30%)
No restrictions	4 (80%)	36 (65%)	34 (53%)	53 (54%)	91 (57%)	28 (41%)	4 (40%)
Help needed	0 (0%)	6 (11%)	6 (9%)	18 (18%)	22 (14%)	9 (13%)	1 (10%)
Bedridden	0 (0%)	0 (0%)	1 (2%)	4 (4%)	17 (11%)	13 (19%)	2 (20%)
<b>Total days ill</b>							
0-5 days	0 (0%)	7 (17%)	5 (12%)	7 (9%)	11 (8%)	5 (10%)	0 (0%)
5-10 days	3 (75%)	19 (45%)	24 (59%)	39 (52%)	72 (55%)	24 (48%)	3 (43%)
10-15 days	1 (25%)	16 (38%)	12 (29%)	29 (39%)	47 (36%)	21 (42%)	4 (57%)
Baselland (2019)	13924 (5.6%)	30882 (12.4%)	35666 (14.3%)	39190 (15.7%)	65017 (26.1%)	45175 (18.1%)	19054 (7.7%)

Table 2: Age structure of study cohort stratified by severity and by duration of symptoms.

Last row shows distribution of ages 15+ in canton of Basel-Land in 2019 for reference.

\*Note that our study cohort does not include minors with less than 18 years of age.

196 We use two negative cohorts; (i) samples from 150 2016/17 influenza  
197 period blood donors, and (ii) our negative cohort. These cohorts should  
198 strengthen the specificity calculations, but also help to address cross-reactivity  
199 to viruses currently in circulation. However, the PCR test is prone to false  
200 negatives, and we therefore expect to find a small number of incorrectly  
201 diagnosed individuals. In line with the reported false negative rate of 15–  
202 25% [20, 21], we identified four individuals with negative PCR results but  
203 seroconverted in both Euroimmun IgG and IgA and Epitope Diagnostics  
204 (EDI) IgG. We consider these four individuals as false negative PCR re-  
205 sults and removed them from the dataset. All results are only influenced  
206 marginally by this step.

### 207 *3.2. Performance characteristics of ELISA tests*

#### 208 *3.2.1. Sensitivity & specificity*

209 We performed the EDI and Euroimmun assays according to the manufac-  
210 turers instructions on all samples. The obtained data were normalized (see  
211 Material and Methods section) to make results comparable between experi-  
212 ments. The reported fold-changes are defined as the ratio between measured  
213 OD and the classification cut-off OD specified by the manufacturer (Figure 1  
214 & Supplementary Figure 2). Positive/negative classification was performed  
215 according to manufacturer’s instructions, and the assay performance was  
216 calculated therefrom.

217 We used a patient’s assignment to the PCR-positive or PCR-negative  
218 cohort together with the corresponding ELISA test result for calculating  
219 performance characteristics for all four assays. The values considering all  
220 data are shown in the top of Table 3. We find specificities of the IgG-based  
221 assays of about 98%-99%, while IgA shows considerably lower and IgM con-

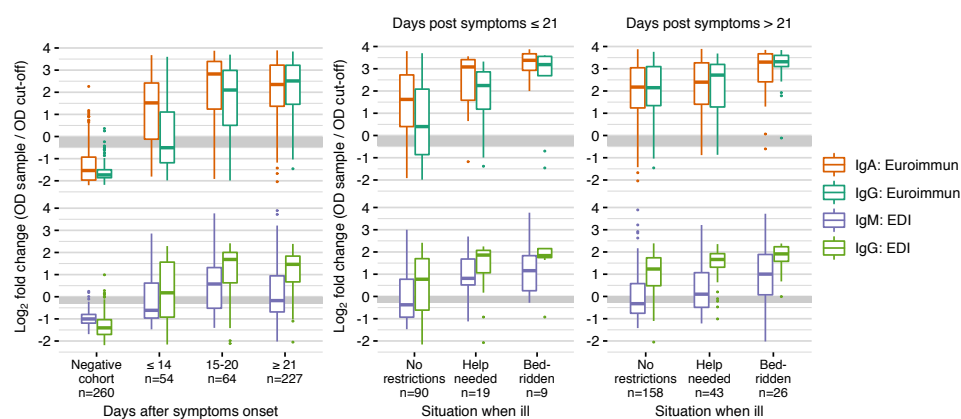


Figure 1: **Overview on ELISA results.** Epitope Diagnostics (EDI) and Euroimmun assays were performed with serum from 607 individuals. The negative cohort consists of 150 serum samples collected during the 2016/17 influenza period and 110 serum samples from PCR-negative individuals from 2020. Positive cases are stratified by days post symptoms onset (left) and additionally stratified by disease severity (right). Fold changes are defined as the ratio between measured OD and the classification cut-off OD specified by the manufacturer. Grey area indicates the range where serum samples are classified as uncertain; samples above (below) this area are classified as positive (negative).

222 siderably higher specificity overall. To determine potential cross-reactivity  
223 of the assays, we separately calculated the specificity from the 150 sam-  
224 ples of the 2016 blood donor cohort (Table 3 (bottom)). Nevertheless, the  
225 histogram of all assays and data show overlap between the cohorts (Supple-  
226 mentary Figure 3).



	EDI				Euroimmun		
	Serum		Plasma		Serum		
	IgM	IgG	IgM	IgG	IgA	IgG	IgG 1.5×
TP	161	287	176	280	304	291	272
FP	3	6	11	12	22	2	0
TN	257 (2)	254 (7)	100 (11)	99 (13)	238 (12)	258 (2)	260 (0)
FN	184 (35)	58 (16)	161 (36)	57 (14)	41 (15)	54 (12)	73 (0)
Se [CI], %	46.7 [41.3, 52.1]	83.2 [78.8, 87]	52.2 [46.7, 57.7]	83.1 [78.6, 86.9]	88.1 [84.2, 91.3]	84.3 [80.1, 88]	78.8 [74.1, 83]
Sp [CI], %	98.8 [96.7, 99.8]	97.7 [95, 99.1]	90.1 [83, 94.9]	89.2 [81.9, 94.3]	91.5 [87.5, 94.6]	99.2 [97.2, 99.9]	100 [98.6, 100]
2016 blood donors							
TN	150 (0)	147 (3)	—	—	136 (7)	150 (2)	150 (0)
FP	0	3	—	—	14	0	0
Sp [CI], %	100 [97.6, 100]	98 [94.3, 99.6]	—	—	90.7 [84.8, 94.8]	100 [97.6, 100]	100 [97.6, 100]

Table 3: Top: Number true positive (TP), false positive (FP), true negative (TN), false negative (FN), sensitivity (Se) and specificity (Sp) for Epitope Diagnostics (EDI) serum and plasma samples and Euroimmun ELISA serum samples for all cohorts. All samples with uncertain result were considered negative for the analysis (number of uncertain samples shown in brackets). Column IgG 1.5× for Euroimmun corresponds to using a threshold of 1.5 instead of 1.1 for the OD-ratio. Bottom: specificity based on serum samples of negative 2016 blood donor cohort only.

227 The IgG- and IgA-based assays show overall sensitivities above 87%,  
228 while the sensitivity of IgM is extremely low at slightly above 50%. How-  
229 ever, the different types of antibodies act at different stages of the immune  
230 response. We therefore stratified the calculation of assay sensitivities by  
231 days after onset of symptoms into three categories: 14 days or less, 15 to 20  
232 days, and 21 days or more (Table 4 & Supplementary Figure 4). Sensitivities  
233 increase with days after onset of symptoms for both IgG assays from about  
234 50% to 95%. The sensitivity of the IgM assay remains low for all strata,  
235 while IgA already shows substantially higher sensitivities than all other as-  
236 says for less than 14 days after onset of symptoms. Specifically, sensitivity  
237 is low for the EDI Diagnostics IgM assay, reaching a maximum of 64% for  
238 two to three weeks after onset of symptoms. Both IgG assays show over-  
239 all sensitivities below 90%, but sensitivities increase to 95% or higher three  
240 weeks after onset of symptoms. The Euroimmun IgA sensitivity is highest  
241 among the four assays for less than two weeks after onset of symptoms with  
242 82% and also reaches about 95% after three weeks or more after onset of  
243 symptoms.

EDI ELISA						
	IgM			IgG		
	≤ 14 days	15–20 days	≥ 21 days	≤ 14 days	15–20 days	≥ 21 days
TP	20	32	109	29	44	214
FN	34 (5)	20 (4)	130 (26)	25 (2)	8 (1)	25 (13)
Se [CI], %	37 [24.3, 51.3]	61.5 [47, 74.7]	45.6 [39.2, 52.2]	53.7 [39.6, 67.4]	84.6 [71.9, 93.1]	89.5 [84.9, 93.1]
Euroimmun ELISA						
	IgA			IgG		
	≤ 14 days	15–20 days	≥ 21 days	≤ 14 days	15–20 days	≥ 21 days
TP	40	46	218	23	42	226
FN	14 (5)	6 (1)	21 (9)	31 (3)	10 (4)	13 (5)
Se [CI], %	74.1 [60.3, 85]	88.5 [76.6, 95.6]	91.2 [86.9, 94.5]	42.6 [29.2, 56.8]	80.8 [67.5, 90.4]	94.6 [90.9, 97.1]

Table 4: Sensitivity of EDI (top) and Euroimmun (bottom) ELISA stratified by days after onset of symptoms. All samples with uncertain result were considered negative for the analysis (number of uncertain samples shown in brackets).

244 We performed the same analysis stratified by three levels of disease  
245 severity—‘no restriction’, ‘help needed’, and ‘bedridden’—and combined  
246 these levels with two levels for days after onset of symptoms: short ( $\leq 21$   
247 days) or long ( $> 21$  days). The resulting sensitivities and specificities and  
248 their 95% confidence intervals are given in Table 5. As expected, sensitivities  
249 also increase with severity of symptoms for both less and more than three  
250 weeks after onset of symptoms, but sample sizes are comparatively small for  
251 shorter time and higher severity. Notably, the IgG response is detectable in  
252 all samples of the ‘bedridden’ cohort  $> 21$  days, and is then comparable to  
253 the manufacturers characterisation on this subset.

EDI IgM						
	Bedridden		Help needed		No restrictions	
	$\leq 21d$	$> 21d$	$\leq 21d$	$> 21d$	$\leq 21d$	$> 21d$
	TP	7	20	15	23	36
FN	2 (2)	6 (3)	4 (0)	20 (6)	54 (8)	98 (16)
Se [CI], %	77.8 [40, 97.2]	76.9 [56.4, 91]	78.9 [54.4, 93.9]	53.5 [37.7, 68.8]	40 [29.8, 50.9]	38 [30.4, 46]

EDI IgG						
	Bedridden		Help needed		No restrictions	
	$\leq 21d$	$> 21d$	$\leq 21d$	$> 21d$	$\leq 21d$	$> 21d$
	TP	8	25	17	39	58
FN	1 (0)	1 (1)	2 (0)	4 (2)	32 (4)	18 (9)
Se [CI], %	88.9 [51.8, 99.7]	96.2 [80.4, 99.9]	89.5 [66.9, 98.7]	90.7 [77.9, 97.4]	64.4 [53.7, 74.3]	88.6 [82.6, 93.1]

Euroimmun IgA						
	Bedridden		Help needed		No restrictions	
	$\leq 21d$	$> 21d$	$\leq 21d$	$> 21d$	$\leq 21d$	$> 21d$
	TP	9	25	18	40	71
FN	0 (0)	1 (0)	1 (0)	3 (2)	19 (6)	17 (7)
Se [CI], %	100 [66.4, 100]	96.2 [80.4, 99.9]	94.7 [74, 99.9]	93 [80.9, 98.5]	78.9 [69, 86.8]	89.2 [83.3, 93.6]

Euroimmun IgG						
	Bedridden		Help needed		No restrictions	
	$\leq 21d$	$> 21d$	$\leq 21d$	$> 21d$	$\leq 21d$	$> 21d$
	TP	7	25	16	42	53
FN	2 (0)	1 (1)	3 (0)	1 (0)	37 (7)	10 (4)
Se [CI], %	77.8 [40, 97.2]	96.2 [80.4, 99.9]	84.2 [60.4, 96.6]	97.7 [87.7, 99.9]	58.9 [48, 69.2]	93.7 [88.7, 96.9]

Table 5: Sensitivities stratified by severity of illness. All samples with uncertain result were considered negative for the analysis (number of uncertain samples shown in brackets).

254 *3.2.2. Reproducibility and linearity*

255 Intra-assay variability was determined by calculating the mean, stan-  
256 dard deviation, and coefficient of variation of the measured OD ratios based  
257 in 5 replicate measurements of 8 samples with values ranging from at or  
258 below the threshold limit to about the 75% quartile in the two IgG and  
259 IgA assays (Supplementary Table 5 & Supplementary Figure 6). In general,  
260 reproducibility was high with coefficients of variation of 5% or smaller in  
261 samples well above the threshold. This variation increased to  $\sim 10\%$  at  
262 or below the threshold. It is trivial but important to state that, at the  
263 threshold, this variability can lead to different classification in each repe-  
264 tition. Last, different samples show different variabilities in the two IgG  
265 assays, possibly indicating the difference between the binding epitope and  
266 assay manufacturing.

267 We investigated the assay linearity using two-fold serially diluted serum  
268 samples from 5 individuals with high OD values for IgG (Supplementary  
269 Figure 11). Both Euroimmun assays showed a good linearity over a dilution  
270 range of 64-fold ( $2^6$  dilutions), while the IgG Epitope Diagnostics (EDI)  
271 assay is linear only in a 16-fold ( $2^4$ ) dilution range. Additionally, both  
272 IgG assays show good agreement along the dilutions (Supplementary Figure  
273 10), suggesting that—after normalization and scaling—the IgG assays give  
274 comparable quantitative results. No data of sufficient quality was acquired  
275 for a discussion of the IgM assay (Supplementary Figure 11). Additionally,  
276 we found that the IgG, but not the IgM, assay from EDI is sensitive to  
277 haemolysis (Supplementary Figure 12).

278 *3.3. Kinetics of seroconversion*

279 Our positive cohort can give insight into the kinetics of seroconversion at  
280 the population level for different antibody types and epitopes and a broad  
281 range of disease manifestations. The two ELISA tests employ different epi-  
282 topes: the EDI test recognizes the SARS-CoV-2 nucleocapsidprotein and  
283 uses IgG and IgA while the Euroimmun test recognizes the S1 portion of  
284 the spike protein using IgG and IgM.

285 For all antibody types, the strength of the response over time correlated  
286 with severity of the symptoms (Figure 2A). We only measured a well dis-  
287 cernible IgM response in the "bedridden" group and a slight response in  
288 the "help needed" group, while it was largely absent from the "no restric-  
289 tion" group. On the other hand, the IgA and IgG response is measurable  
290 in most samples. The average response is higher when "bedridden", while  
291 similar antibody response levels are observed for "no restriction" and "help  
292 needed".

293 In most viral host responses, the earliest measurable response is IgM  
294 followed by IgG and IgA. Surprisingly, but in line with other reports for  
295 SARS-CoV-2 [10, 11] as well as observations for SARS and MERS, all three  
296 antibody types reacted within a similar timeframe. The earliest detection,  
297 within a week of symptom onset, was for IgA, followed by IgM and IgG both  
298 detected from week 2. IgM then peaked 2–3 weeks and IgA 3–4 weeks post  
299 symptom onset, while no decline for IgG was measured. The temporal order  
300 of these peaks can be expected based on the half-life time of the different  
301 antibody types in the blood.

302 These observations are further substantiated from observing the responses  
303 on the level of the individuals. Most interestingly, we find a robust IgG re-  
304 sponse against the NCP early on, whereas the response to the spike protein

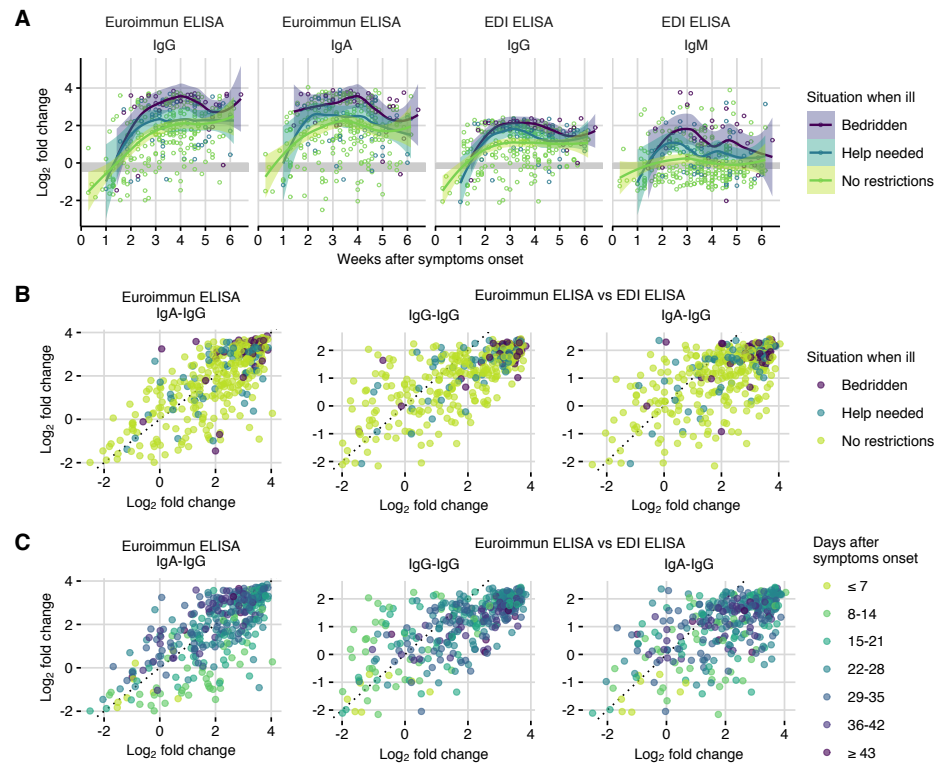


Figure 2: A: Log<sub>2</sub>-fold changes in ELISA signal for each assay by time after symptoms onset and by disease severity. Data was fitted using smoothing splines to visualize trends (figure shows fits and 95% confidence intervals). Grey area indicates the range where serum samples are classified as uncertain; samples above (below) this area are classified as positive (negative). B: Scatterplots comparing log<sub>2</sub>-fold changes in IgA vs IgG measured by Euroimmun ELISA (left), IgG measured by Euroimmun ELISA vs IgG measured by Epitope Diagnostics (EDI) ELISA (center), and Euroimmun IgA vs EDI IgG (right) by disease severity. C: As in B but with days after onset of symptoms. Fold-changes are defined as the ratio between measured OD and the classification cut-off OD specified by the manufacturer.



305 seems to be more prevalent at later time points (Figure 2A). However, nei-  
306 ther IgG response is significantly different depending on the severity of the  
307 disease. The IgA response against the spike protein is produced rapidly in  
308 the absence of an IgG response but subsides at later time points when the  
309 IgG response becomes dominant.

#### 310 **4. Discussion**

311 Here, we describe the collection and initial characterisation of a blood  
312 bank from the affected population of the canton Basel-Landschaft, Switzer-  
313 land. Almost 50% of the people fallen ill with COVID-19 participated in  
314 this study and the biobank is therefore exemplary for an outbreak in a  
315 western European community. In particular, the COVID-19 severity and  
316 symptoms in the biobank samples closely follow the reported distributions  
317 elsewhere. We might have slightly biased our cohorts toward less severe  
318 cases, by excluding samples from actively hospitalized or deceased patients.  
319 Since only 11 cases remained in the hospital at the time of recruitment, this  
320 bias is likely small. Overall, we consider the largely representative sample a  
321 strength of our biobank, as it allows us to estimate the kinetics of serocon-  
322 version and assay performance characteristics on samples closely resembling  
323 those expected in population-wide studies for sero-prevalence.

324 We find that both specificity and sensitivity are below the manufacturers  
325 specifications for all four tests, and observe similar sensitivities only for our  
326 'bedridden' group. This indicates that characterizations by the manufac-  
327 turers are likely based on 'severe' cohorts, which limits their applicability  
328 and impairs planning of sero-prevalence studies. We also find that the IgA  
329 and IgG assays allow for quantification within a relatively narrow range: the

330 linear range of the Euroimmun assay covers approximately a 64-fold dilu-  
331 tion range and the EDI assay a 16-fold dilution range. When calculating  
332 sensitivities and specificities with our cohort, the IgA test shows the highest  
333 sensitivity, followed by the two IgG assays. The poor sensitivity of the IgM  
334 test is either due to the absence of a dedicated IgM response [22] in line  
335 with previous reports or poor test performance. The highest specificity is  
336 achieved with the Euroimmun IgG test. The specificity could be further  
337 boosted by a higher cut-off as previously reported, however accompanied by  
338 a concurrent drop in sensitivity (Supplementary Tables 14, 15, 16).

339 The average strength of the antibody response, as measured by the ra-  
340 tios, correlates with the severity of the disease at each time point. However,  
341 the differences vanish the longer post-symptoms onset the individuals are,  
342 and the measured amount in an individual is not predictive for the sever-  
343 ity of the disease. Surprisingly, but similar to earlier reports, we measured  
344 that the temporal order of the response is shifted. IgA is measured within  
345 1–2 weeks after symptoms onset, followed by the IgG response at week 2–3,  
346 while a clear IgM response is absent. Especially at earlier time points, the  
347 IgA response is stronger than the IgG response as measured using the S1  
348 spike protein epitope in the Euroimmun assay. To fully understand what  
349 the obtained values reflect and how they correlate with diseases and pro-  
350 tection from disease, further analyses are planned including measuring the  
351 strength to neutralize pseudo-typed viral particles and analysing the indi-  
352 vidual antibodies by sequencing the PBMCs. However, our current data  
353 help to understand the limitations of the current antibody tests on the mar-  
354 ket and serve as the basis to interpret ongoing studies on other lab assay  
355 characterization, POCT performances and PBMC sequencing.

356 **Acknowledgement**

357 This study was sponsored by Jürg Sommer, head of the "Amt für Gesund-  
358 heit", and the logistics of the sample collection were provided by the crisis  
359 staff and the civil protection service of the canton Basel-Landschaft. FR  
360 is funded by the NCCR 'Molecular Systems Engineering'. Funding for JD  
361 from the two Cantons of Basel through project grant PMB-01-17 granted  
362 by the ETH Zurich is acknowledged.

363 Funding for TR, DP, BN Funding for MS

364 **References**

- 365 [1] A. T. Huang, B. Garcia-Carreras, M. D. Hitchings, B. Yang, L. Katzel-  
366 nick, S. M. Rattigan, B. Borgert, C. Moreno, B. D. Solomon,  
367 I. Rodriguez-Barraquer, et al., A systematic review of antibody me-  
368 diated immunity to coronaviruses: antibody kinetics, correlates of pro-  
369 tection, and association of antibody responses with severity of disease,  
370 medRxiv (2020).
- 371 [2] J. AJ, A. MJ, et al., Performance of six SARS-CoV-2 immunoassays in  
372 comparison with microneutralisation, Journal of clinical virology: the  
373 official publication of the Pan American Society for Clinical Virology  
374 129 (2020) 104512.
- 375 [3] F. Schmidt, Y. Weisblum, F. Muecksch, H.-H. Hoffmann, E. Michailidis,  
376 J. C. Lorenzi, P. Mendoza, M. Rutkowska, E. Bednarski, C. Gaebler,  
377 et al., Measuring SARS-CoV-2 neutralizing antibody activity using  
378 pseudotyped and chimeric viruses, bioRxiv (2020).

- 379 [4] F. Amanat, D. Stadlbauer, S. Strohmeier, T. H. Nguyen,  
380 V. Chromikova, M. McMahon, K. Jiang, G. A. Arunkumar, D. Jur-  
381 czyszak, J. Polanco, et al., A serological assay to detect SARS-CoV-2  
382 seroconversion in humans, *Nature medicine* (2020) 1–4.
- 383 [5] Y. Shi, Y. Yi, P. Li, T. Kuang, L. Li, M. Dong, Q. Ma, C. Cao, Diagnosis  
384 of severe acute respiratory syndrome (SARS) by detection of SARS  
385 coronavirus nucleocapsid antibodies in an antigen-capturing enzyme-  
386 linked immunosorbent assay, *Journal of clinical microbiology* 41 (2003)  
387 5781–5782.
- 388 [6] P. D. Burbelo, F. X. Riedo, C. Morishima, S. Rawlings, D. Smith,  
389 S. Das, J. R. Strich, D. S. Chertow, R. T. Davey Jr, J. I. Cohen,  
390 Sensitivity in detection of antibodies to nucleocapsid and spike proteins  
391 of severe acute respiratory syndrome coronavirus 2 in patients with  
392 coronavirus disease 2019, *The Journal of infectious diseases* (2020).
- 393 [7] F. Wu, A. Wang, M. Liu, Q. Wang, J. Chen, S. Xia, Y. Ling, Y. Zhang,  
394 J. Xun, L. Lu, et al., Neutralizing antibody responses to SARS-CoV-2  
395 in a COVID-19 recovered patient cohort and their implications (2020).
- 396 [8] T. F. Rogers, F. Zhao, D. Huang, N. Beutler, A. Burns, W.-t. He,  
397 O. Limbo, C. Smith, G. Song, J. Woehl, et al., Isolation of potent  
398 SARS-CoV-2 neutralizing antibodies and protection from disease in a  
399 small animal model, *Science* (2020).
- 400 [9] N. M. Okba, M. A. Müller, W. Li, C. Wang, C. H. GeurtsvanKessel,  
401 V. M. Corman, M. M. Lamers, R. S. Sikkema, E. de Bruin, F. D. Chan-  
402 dler, et al., Severe acute respiratory syndrome coronavirus 2-specific

- 403 antibody responses in coronavirus disease 2019 patients., *Emerging*  
404 *infectious diseases* 26 (2020).
- 405 [10] B. Sun, Y. Feng, X. Mo, P. Zheng, Q. Wang, P. Li, P. Peng, X. Liu,  
406 Z. Chen, H. Huang, et al., Kinetics of SARS-CoV-2 specific IgM and  
407 IgG responses in COVID-19 patients, *Emerging Microbes & Infections*  
408 (2020) 1–36.
- 409 [11] Q.-X. Long, B.-Z. Liu, H.-J. Deng, G.-C. Wu, K. Deng, Y.-K. Chen,  
410 P. Liao, J.-F. Qiu, Y. Lin, X.-F. Cai, et al., Antibody responses to  
411 SARS-CoV-2 in patients with COVID-19, *Nature medicine* (2020) 1–4.
- 412 [12] L. Shen, C. Wang, J. Zhao, X. Tang, Y. Shen, M. Lu, Z. Ding, C. Huang,  
413 J. Zhang, S. Li, et al., Delayed specific IgM antibody responses observed  
414 among COVID-19 patients with severe progression, *Emerging Microbes*  
415 *& Infections* 9 (2020) 1096–1101.
- 416 [13] M. S. Suthar, M. G. Zimmerman, R. C. Kauffman, G. Mantus, S. L.  
417 Linderman, W. H. Hudson, A. Vanderheiden, L. Nyhoff, C. W. Davis,  
418 S. Adekunle, et al., Rapid generation of neutralizing antibody responses  
419 in COVID-19 patients, *Cell Reports Medicine* (2020).
- 420 [14] R. Wölfel, V. M. Corman, W. Guggemos, M. Seilmaier, S. Zange, M. A.  
421 Müller, D. Niemeyer, T. C. Jones, P. Vollmar, C. Rothe, et al., Viro-  
422 logical assessment of hospitalized patients with COVID-2019, *Nature*  
423 581 (2020) 465–469.
- 424 [15] J. Lathrop, FDA, Analytical validation and points for discussion, 2016.
- 425 [16] S. Ubol, S. B. Halstead, How innate immune mechanisms contribute to

- 426 antibody-enhanced viral infections, *Clinical and Vaccine Immunology*  
427 17 (2010) 1829–1835.
- 428 [17] J. Xie, C. Ding, J. Li, Y. Wang, H. Guo, Z. Lu, J. Wang, C. Zheng,  
429 T. Jin, Y. Gao, et al., Characteristics of patients with coronavirus  
430 disease (COVID-19) confirmed using an IgM-IgG antibody test, *Journal*  
431 *of medical virology* (2020).
- 432 [18] R Core Team, R: A Language and Environment for Statistical Comput-  
433 ing, R Foundation for Statistical Computing, Vienna, Austria, 2019.
- 434 [19] R. Scherer, PropCIs: Various Confidence Interval Methods for Propor-  
435 tions, 2018. R package version 0.3-0.
- 436 [20] L. M. Kucirka, S. A. Lauer, O. Laeyendecker, D. Boon, J. Lessler, Vari-  
437 ation in false-negative rate of reverse transcriptase polymerase chain  
438 reaction-based SARS-CoV-2 tests by time since exposure, *Annals of*  
439 *Internal Medicine* (2020).
- 440 [21] A. T. Xiao, Y. X. Tong, S. Zhang, False-negative of RT-PCR and  
441 prolonged nucleic acid conversion in COVID-19: rather than recurrence,  
442 *Journal of medical virology* (2020).
- 443 [22] H. Ma, W. Zeng, H. He, D. Zhao, D. Jiang, P. Zhou, L. Cheng, Y. Li,  
444 X. Ma, T. Jin, Serum IgA, IgM, and IgG responses in COVID-19,  
445 *Cellular & Molecular Immunology* (2020) 1–3.