

# Shrinking the gHAT map: identifying target regions for enhanced control of *gambiense* human African trypanosomiasis in the Democratic Republic of Congo

Ching-I Huang<sup>a,b,\*</sup>, Ronald E Crump<sup>a,b,c,\*</sup>, Paul Brown<sup>a,b</sup>, Simon E F Spencer<sup>a,d</sup>, Erick Mwamba Miaka<sup>e</sup>, Chansy Shampa<sup>e</sup>, Matt J Keeling<sup>a,b,c</sup>, Kat S Rock<sup>a,b</sup>

<sup>a</sup>*Zeeman Institute for System Biology and Infectious Disease Epidemiology Research, The University of Warwick, Coventry, U.K.*

<sup>b</sup>*Mathematics Institute, The University of Warwick, Coventry, U.K.*

<sup>c</sup>*The School of Life Sciences, The University of Warwick, Coventry, U.K.*

<sup>d</sup>*The Department of Statistics, The University of Warwick, Coventry, U.K.*

<sup>e</sup>*Programme National de Lutte contre la Trypanosomiase Humaine Africaine (PNLTHA), Kinshasa, D.R.C.*

---

## Abstract

### Background

*Gambiense* human African trypanosomiasis (gHAT) is a disease targeted for elimination of transmission (EOT) by 2030, however the likelihood of achieving it is unknown. We utilised modelling to study the impact of currently-available intervention methods on transmission across the Democratic Republic of Congo (DRC) – which accounts for  $\sim 70\%$  of global burden – and highlight regions requiring intensified interventions.

### Methods

A model previously fitted to case data in DRC was used to predict cases and new infections under four future strategies in 168 health zones. The strategies comprise of medical interventions – active and passive screening (AS and PS)

---

\*These authors contributed equally to this work.

*Email address:* [ching-i.huang@warwick.ac.uk](mailto:ching-i.huang@warwick.ac.uk) (Ching-I Huang)

– and some include large-scale vector control (VC). In each health zone, we estimate the median year of EOT and the probability of EOT by 2030 under each and compute the least ambitious strategy predicted to achieve EOT by 2030.

### Findings

The model predicts 42 health zones are very likely to achieve EOT ( $> 90\%$  probability) using medical-only strategies continued at mean coverage levels; this increases to 52 when AS coverage is increased to maximum previous coverage. In all VC strategies, health zones are predicted to meet EOT by 2030, although there are several where increasing low AS coverage could achieve this.

### Interpretation

This analysis provides a priority list for consideration for supplementary VC implementation (Bagata, Bandundu, Bolobo, Kikongo, Kwamouth and Masi Manimba in former Bandundu province) in conjunction with the recent AS coverage.

### Funding

Bill Melinda Gates Foundation [OPP1177824, OPP1184344, OPP1156227, OPP1186851, and OPP1155293] and Belgian Development Agency (ENABEL).

*Keywords:* gambiense human African trypanosomiasis, modelling, 2030 goals, elimination of transmission, Democratic Republic of Congo

---

## Research in context

### *Evidence before this study*

On 30th April 2020 we searched PubMed and ScienceDirect to identify previous predictive modelling studies of gHAT in DRC using the search terms “model” AND “Democratic Republic of Congo” OR “DRC” AND “trypanosomiasis” OR “sleeping sickness”. There are numerous modelling studies which have looked at estimating the impact of a variety of strategies on transmission and elimination, however many utilise infection prevalence categories for performing simulations rather than location-specific data. For DRC, modelling studies have made projections at a province-level (i.e. Bandundu), and for health zones (i.e all of Equateur and some in Bandundu),

concluding that there is high heterogeneity in underlying transmission, consequently whether medical-only strategies will suffice to meet elimination of transmission (EOT) by 2030. They find that supplemental, large-scale vector control would be expected to result in rapid EOT across settings. Two high-endemicity, village-level studies suggest that regular, high-coverage screening is needed to achieve EOT within 15 years without additional interventions.

#### *Added value of this study*

This study presents predictions for EOT across the whole DRC for the first time. Since DRC has the highest disease burden it is critical to understand how far current tools might go towards achieving this 2030 target across the country, and how strategies may need to be adapted for specific locations in the endgame. It also provides a priority list for regions requiring intensified interventions.

#### *Implications of all the available evidence*

Our analysis suggests that, whilst many regions of DRC are expected to meet the EOT goal by 2030 with medical-only strategies, for some regions current strategies may need to be bolstered to achieve EOT within the next decade. Although some regions could consider increasing coverage of active screening, vector control appears a desirable supplemental intervention in several specific high-prevalence locations.

## 1 **Introduction**

2 The pinnacle of success for an infectious disease programme is to drive to  
3 eradication, resulting in complete removal of morbidity and mortality, yet  
4 no longer requiring interventions. Of all the human diseases targeted for  
5 eradication, only one – smallpox – has currently achieved this objective, yet  
6 there are several for which this remains the (potentially illusive) goal (such as  
7 polio, Guinea worm, and yaws). Clear lessons that can be learnt from many  
8 eradication programmes are: (i) the often slow progress from low to very  
9 low case burden, (ii) the ever-increasing effort required per case to tackle  
10 remaining infection, and (iii) the question of whether eradication is even  
11 epidemiologically or operationally feasible.

12 One step down from eradication is elimination of transmission (EOT) to hu-  
13 mans, acknowledging that transmission pockets could persist in non-human

14 animal cycles. This goal, arguably, may be almost as challenging and fraught  
15 with the same hurdles to overcome as eradication itself. *Gambiense* human  
16 African trypanosomiasis (gHAT, sleeping sickness) is one such disease with  
17 the EOT goal and within the last decade it was still known to be extant in 15  
18 countries in West and Central Africa<sup>1</sup>. This parasitic infection is transmit-  
19 ted to humans via bites by tsetse, with gHAT symptoms typically increasing  
20 in severity over several years and leading to death without treatment. The  
21 remarkable progress made to bring down case burden across the continent –  
22 falling to below 10,000 cases in 2009 for the first time since the most recent  
23 epidemic started in the 1970s, and to only 953 in 2018<sup>1,2,3</sup> – has sparked  
24 optimism that EOT may be possible and the World Health Organization has  
25 set the goal of EOT by 2030<sup>4,5</sup>. Indeed gHAT fulfils some of the criteria as-  
26 sociated with an “eliminable” disease: we have a range of field-proven tools  
27 and associated delivery mechanisms as well as means of diagnosis and surveil-  
28 lance<sup>6</sup>. Unlike smallpox, gHAT is not vaccine-preventable, but wide-spread  
29 testing, diagnosis, and treatment have worked well to curtail transmission.  
30 The key question is whether current tools for gHAT are sufficient to reach  
31 EOT in the next ten years, and if so, how expansive might their use have to  
32 be to get there.

33 The Democratic Republic of the Congo (DRC) is the country with the most  
34 reported gHAT cases. Due to the concerted efforts of the national sleep-  
35 ing sickness control programme in DRC (PNLTHA-DRC), the number of  
36 reported cases dropped below 1,000 in the country in 2018. However, the  
37 DRC still accounted for nearly 70% of global cases (660 out of 953 cases) in  
38 that year<sup>1,3</sup>. Therefore, the DRC is the most critical country on which the  
39 achievement of EOT by 2030 hinges.

40 In order to assess EOT feasibility, this study focuses on quantitative fore-  
41 casting of gHAT across 168 endemic health zones (each have a population of  
42 around 100,000 people) in DRC to examine if, how, and when EOT could  
43 be expected under strategies based on currently available tools. Previous  
44 DRC-specific predictive modelling studies have provided insights into ex-  
45 pected timelines to EOT in Equateur province<sup>7</sup>, and parts of Bandundu  
46 province<sup>8,9,10,11,12</sup> under continuation of medical-based strategies with or with-  
47 out vector control. From these studies it is clear that a one-size-fits-all ap-  
48 proach is unlikely to be sufficient to meet this highly ambitious target in the  
49 next decade. Although coverage of active screening has been driven by local  
50 numbers of cases, additional data-driven guidance could help to further tailor

51 strategy selection.

52 In this article, we enlarge the geographical scope of previous predictions to  
53 include the whole country, utilising the results of previous fitting<sup>13</sup> to examine  
54 the strategies of active screening (AS) with or without supplemental, large-  
55 scale vector control (VC) on top of the local passive surveillance (PS) system  
56 to stop gHAT transmission by 2030 in DRC. A graphical user interface (GUI,  
57 see S2 GUI) to complement this article was set up to provide full model  
58 outputs. In this analysis we aim to identify regions which are likely to be  
59 successful in achieving local EOT on their current trajectory, and ones where  
60 enhanced control may be required to meet this target. Furthermore, we  
61 provide a priority list of health zones where intensification of strategies is  
62 most urgent based on past intervention coverage and projected timelines to  
63 EOT.

## 64 **2. Methods**

### 65 *2.1. Forward projections*

66 We used a previously developed variant (“Model 4”) of the Warwick gHAT  
67 model<sup>8,9,13</sup> to predict gHAT dynamics by considering transmission among  
68 humans, tsetse, and non-reservoir animals. This anthroponotic transmis-  
69 sion model with low-risk and high-risk humans is supported by patterns  
70 observed in longitudinal human case data in DRC<sup>8</sup> and captures systematic  
71 non-participation of high-risk groups in the population – anecdotally believed  
72 to be working-age people spending time near tsetse habitat, and away from  
73 villages during active screening activities. Detailed model illustration and  
74 complete mathematical descriptions are available in S1 Model details.

75 The fitted model takes into account previous advances in medical, diagnostic,  
76 and control systems; posterior parameters were found by fitting to health-  
77 zone level data for the period 2000–2016<sup>13</sup>. Major changes include better  
78 PS systems in the former province of Bandundu and Bas Congo, improved  
79 active case confirmation by video recording of diagnostics in Mosango and  
80 Yasa Bonga in Bandundu from 2015, and implementation of large-scale VC  
81 in Yasa Bonga since mid-2015. Based on the continuation of the current  
82 PS system, we considered four strategies for projections from 2017 to 2050,  
83 which included different coverage of AS and whether or not to implement  
84 VC from 2020. As summarised in Table 1, AS is assumed be either at the  
85 recent (2012–2016) mean level achieved or at the maximum level (maximum

86 achieved during 2000–2016), and hence depend on the historical data in each  
 87 health zone. Except for Yasa Bonga (which had a reported effectiveness of  
 88 90%<sup>14</sup>), a fixed effectiveness of 80% tsetse reduction after one year was used  
 89 in the strategies with VC. Other tsetse reductions (i.e. 60% and 90%) were  
 90 examined in sensitivity analyses in S1 Model details. Further model assump-  
 91 tions include: (1) in Yasa Bonga only strategies with VC are considered as it  
 92 is already in place pre-2017; (2) video confirmation of parasitological diagno-  
 93 sis was launched in 2018 in Bandundu health zones to remove false positives  
 94 in AS; (3) diagnostic algorithms will be improved to 100% specificity out-  
 95 side Bandundu when the detected case numbers are close to the expected  
 96 incidence of false positive detections (see S1 for further details).

97 The data set finished in 2016 and so forward projections were performed  
 98 from 2017 to 2050, independently for each health zone. Parameter uncer-  
 99 tainty was presented by 1,000 randomly selected sets of parameters from the  
 100 health-zone-specific posteriors in the fitted model. Observational uncertainty  
 101 in predicted case numbers each year was considered by drawing ten random  
 102 samples from the predicted mean dynamics for each set of parameters. In  
 103 model outputs, 10,000 samples for observable variables such as active and  
 104 passive cases, and related metrics were generated. On the other hand, unob-  
 105 servable variables like new infections and the year of EOT were predicted by  
 106 the 1,000 model realisations (parameter uncertainty but no sampling uncer-  
 107 tainty).

Table 1: Strategies considered for projections (2017–2050). VC effectiveness is determined by the proportional reduction in tsetse population after one year of implementation. Results of sensitivity analysis on VC effectiveness are available in S1 Model details and S2 GUI. Strategies without VC are not considered in Yasa Bonga because VC has been implemented since the middle of 2015.

Strategy name	AS coverage from 2017	VC effectiveness from 2020	PS coverage from 2017
MeanAS	Mean (2012–2016)	0%	Same as 2016
MaxAS	Max (2000–2016)		
MeanAS+VC	Mean	90% for Yasa Bonga	
MaxAS+VC	Max	80% everywhere else	

## 108 *2.2. Measuring elimination of transmission*

109 As there is no direct way to observe EOT, WHO suggest a primary indicator  
110 of zero reported cases to measure the achievement of EOT<sup>4,15</sup>. However,  
111 the number of reported cases depends largely on the strength of medical  
112 interventions, so other methods to assess progress towards EOT are desirable  
113 to complement imperfect case indicators<sup>16,17</sup>.

114 Fortunately, mechanistic modelling provides the means to both infer and  
115 predict the unobservable transmission dynamics to assess EOT. Here, we  
116 calculated the number of underlying new infections each year in the epidemi-  
117 ological model. Unlike the discrete nature of populations, the outputs of  
118 deterministic models are continuous and whilst they can asymptote to zero  
119 they will never reach it. Therefore, to identify a realistic point at which  
120 EOT has been achieved, we introduced a proxy threshold ( $= 1$ ) for annual  
121 new infections and assume that EOT is achieved when the number of new  
122 infections is below the threshold (see S1 for more details).

## 123 *2.3. Role of the funding source*

124 The funders of the study had no role in study design, data collection, data  
125 analysis, data interpretation, or writing of the report. The corresponding  
126 author had full access to all the data in the study and had final responsibility  
127 for the decision to submit for publication.

## 128 **3. Results**

### 129 *3.1. Projection trends in different risk settings*

130 Forward projections in 168 health zones are reported in this study; non-  
131 endemic health zones, and those with little intervention, and/or case re-  
132 porting were excluded from the original model fitting and hence from these  
133 projections<sup>13</sup>.

134 Figure 1 shows assumed numbers of people screened and model outputs (i.e.  
135 active and passive cases, new infections, and probability of EOT) for the  
136 four strategies in two example health zones: Kwamouth (former Bandundu  
137 province) and Tandala (former Equateur province). Both health zones had  
138 significant numbers of cases in the early 2000s and still have on-going trans-  
139 mission despite annual AS. Kwamouth, with 1068 reported cases in 2012–  
140 2016 (estimated 2015 population of 127,205), falls within WHO’s definition  
141 of a “high-risk” category for gHAT (1–10 cases/1,000 per year averaged over

142 five years), while Tandala is only “low-risk” (38 reported cases in 2012–2016  
143 and estimated 2015 population of 274,945 – i.e. 1–10 cases/100,000 per  
144 year). Historical AS data shows that Kwamouth had substantially higher  
145 proportions of people screened than Tandala. Despite very high coverage of  
146 AS in Kwamouth, achieving EOT by 2030 is predicted to only be possible  
147 when VC is added – the model suggests that transmission will be interrupted  
148 completely within four years once VC begins. Unlike Kwamouth, Tandala  
149 appears extremely likely to achieve EOT by 2030 by MaxAS strategy and  
150 EOT even occurs in 60% of projections under the less intensive MeanAS  
151 strategy.

### 152 *3.2. Timelines to, and certainty of, EOT*

153 The year of elimination of transmission (YEOT) is defined as the first year  
154 that the EOT criterion (i.e. number of new infections is less than one) is  
155 met. Health zone maps of the median YEOT under the four strategies are  
156 shown in Figure 2. It is possible for different strategies to have very similar  
157 YEOT distributions within a health zone if EOT is expected to have already  
158 occurred. Using the value of median YEOT, health zones can be classified  
159 into three categories: on track ( $YEOT \leq 2030$ ), slightly behind schedule  
160 ( $2030 < YEOT \leq 2040$ ), and greatly behind schedule ( $YEOT > 2040$ ) to met  
161 the EOT goal. We predict 74 health zones are on track, 29 are slightly behind  
162 the schedule, and 65 are greatly behind schedule under MeanAS strategy. An  
163 extra seven health zones are on track while 62 remain greatly behind schedule  
164 under MaxAS strategy. Data shows low coverage of AS (defined as lower than  
165 25% for mean coverage and 40% for maximum coverage) may be responsible  
166 for predicted delays in EOT in health zones outside the former Bandundu  
167 province. With VC starting in 2020, all health zones are predicted to achieve  
168 EOT by 2024. MaxAS+VC strategy could further bring forward YEOT by  
169 up to one year (although the five years data bins in Figure 2 obscure this  
170 nuance).

171 The median YEOT provides an average of when to expect EOT but not the  
172 certainty that the goal will be met by 2030. The probability of elimination  
173 of transmission (PEOT) by 2030, which highly depends on the distribution  
174 of YEOT, captures the uncertainty of model predictions. Consequently, low  
175 values of median YEOT cannot guarantee EOT by 2030. One example is  
176 Inongo in the former Bandundu province, which has a median YEOT of 2019  
177 but the PEOT by 2030 is  $< 1$  under both MeanAS and MaxAS strategies.



178 Figure 3 shows PEOT by 2030 in each health zone under four strategies.  
179 Three uncertainty categories of model predictions are particularly interesting:  
180 EOT is very likely to be met by 2030 if  $PEOT > 0.9$ , EOT by 2030 is highly  
181 uncertain when  $0.3 < PEOT < 0.7$ , and EOT is very unlikely to be met if  
182  $PEOT < 0.1$ . The model predicts 42 health zones are very likely to meet  
183 the goal and 61 are almost certain to miss it under MeanAS strategy. High  
184 uncertainty in EOT is reported in 33 health zones. Despite the distribution  
185 of YEOT being shifted forward under MaxAS strategy, only ten extra health  
186 zones become very likely to meet the goal by 2030 while 24 health zones  
187 remain highly uncertain because of their wide YEOT distributions. With  
188 VC starting in 2020, a tight distribution of YEOT means EOT by 2030 is  
189 extremely likely everywhere even if its median is quite close to 2030.

### 190 *3.3. Prioritising health zones*

191 Decision-making for gHAT strategy is challenging; programmes have the flex-  
192 ibility to implement nuanced, spatially-heterogeneous interventions, however  
193 they must adhere to more general WHO recommendations and budget con-  
194 straints. In the present study we rank strategies by how ambitious the use  
195 of additional interventions is and examine the minimum required to meet  
196 the 2030 EOT goal in each health zone – referred to here as the “preferred  
197 strategy”. The preferred strategy maps under different levels of certainty  
198 in EOT as predicted by the model are shown in Figure 4. Under the cri-  
199 terion of  $PEOT > 0.9$  (left map), preferred strategies are defined as the  
200 strategies which achieve EOT by 2030 in at least 90% of simulations. The  
201 criterion of  $PEOT = 1$  (right map) further restricts preferred strategies to  
202 achieve the goal by 2030 in all simulations. According to the ordered rank-  
203 ing (MeanAS, MaxAS, MeanAS+VC, and MaxAS+VC), the least ambitious  
204 strategy among all that meet the PEOT criterion is selected as the preferred  
205 strategy. This order of ambition ranking was based on the following prin-  
206 ciples: MeanAS represents the continuation of current intervention, MaxAS  
207 is the highest level of intervention implemented to date, and VC is a new  
208 intervention to all health zones except Yasa Bonga. Notably MaxAS+VC is  
209 absent in any of the preferred strategy maps because all health zones are ex-  
210 pected to achieve the EOT goal by 2030 under MeanAS+VC strategy which  
211 requires less resources. Maps showing lower PEOT thresholds (from  $PEOT$   
212  $= 0.5$  upwards) can be found in the GUI (see S2 GUI) and far less intensifi-  
213 cation would be required if a 50% probability of meeting the goal by 2030 is  
214 considered to be sufficient.

215 Switching to intensified strategies is generally expected to increase confidence  
216 that EOT will be achieved, although the model predicts very few health zones  
217 will eliminate transmission by medical-only strategies with high probability  
218 (31% under  $PEOT > 0.9$  and 17% under  $PEOT = 1$ ). We used the historical  
219 data in conjunction with model assumptions to understand the causes of  
220 apparent high need for VC and further suggest where and what kind of  
221 intensified interventions are needed to achieve EOT by 2030.

222 Using the WHO's risk categories based on data from 2012–2016, health zone  
223 can be classified as: moderate- or high-risk ( $\geq 1$  case per year on average per  
224 10,000), or low- or very low-risk ( $\geq 1$  but  $< 100$  cases per year on average  
225 per 1,000,000). The 125 low- or very low-risk health zones are expected  
226 to be on track to meet EOT by 2030. However, the model predicts the  
227 majority of them (87 health zones) need VC to achieve EOT by 2030 with  
228 more than 95% probability. The apparent discrepancy comes from large  
229 uncertainty in model predictions due to limited information arising from low  
230 AS coverage. AS provides precious information on quantifying the underlying  
231 transmission and affects model predictions. In order to maximise resource  
232 efficiency, reductions in AS commonly happen when fewer cases are reported.  
233 More than 95% of the low- or very low-risk health zones screened a total of less  
234 than 50% of its population in the last five years (i.e. less than 10% annually).  
235 As a result, VC is favored in model predictions due to lack of information  
236 and may be unnecessary in practice in low- or very low-risk health zones.  
237 For moderate- or high-risk health zones, the model predicts nearly all health  
238 zones (37 out of 43) need VC to meet EOT by 2030 with more than 95%  
239 probability. Although VC seems a reasonable tool in moderate- or high-risk  
240 health zones, unfortunately it is unlikely to be practical to roll out large-scale  
241 VC in all of them in this short timeframe. In health zones outside former  
242 Bandundu province that are greatly behind schedule the maximum observed  
243 coverage was 40%. When this value was applied as a threshold; Bagata,  
244 Bandundu, Bolobo, Kikongo, Kwamouth, and Masi Manimba in the former  
245 Bandundu province are on the shortlist of health zones where VC is highly  
246 recommended by mathematical modelling. More than 95% of health zones  
247 have mean AS coverage lower than 25%, therefore a secondary suggestion is  
248 to increase the coverage of AS to at least 25% especially in the moderate- or  
249 high-risk health zones.

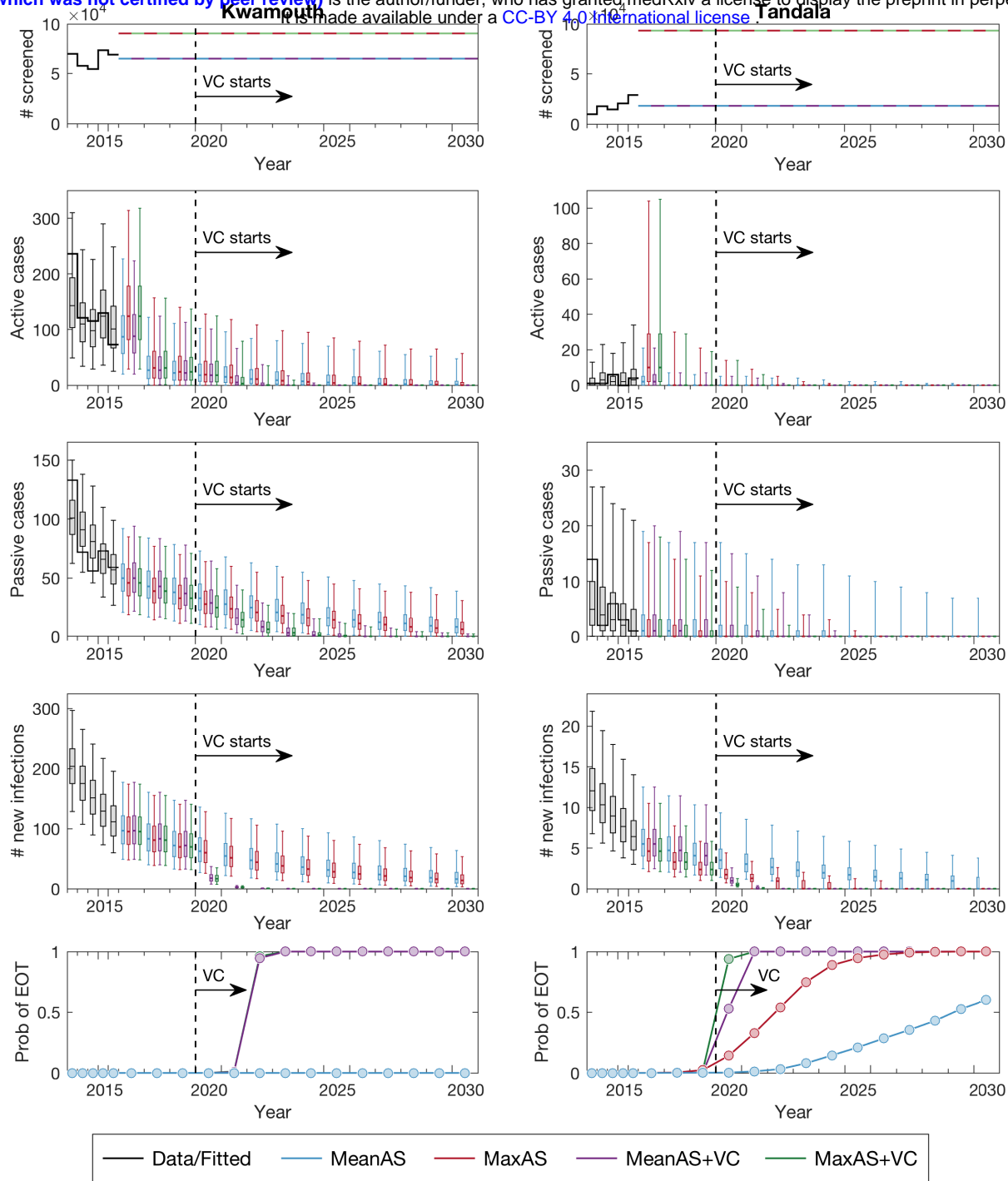


Figure 1: **Time series of key model outputs in two example health zones.** Kwamouth (left panels) in former Bandundu province and Tandala (right panels) in former Equateur province represent a high-risk and a low-risk health zone, respectively. The top row shows the number of people actively screened, the middle rows show three direct model outputs (active cases, passive cases and underlying new infections from top to bottom), and the bottom row shows the probability of achieving EOT by year. Black lines and box plots indicate data and model fits in the last five years (2012–2016), coloured dashed lines denote the assumed AS starting in 2017, and colour box plots and circles present the predictions for four strategies (as defined in Table 1). Box plots with whiskers showing 95% prediction intervals summarise parameter and observational uncertainty. Full model outputs (2000–2050) of all 168 analysed health zones are available online (see S2 GUI).

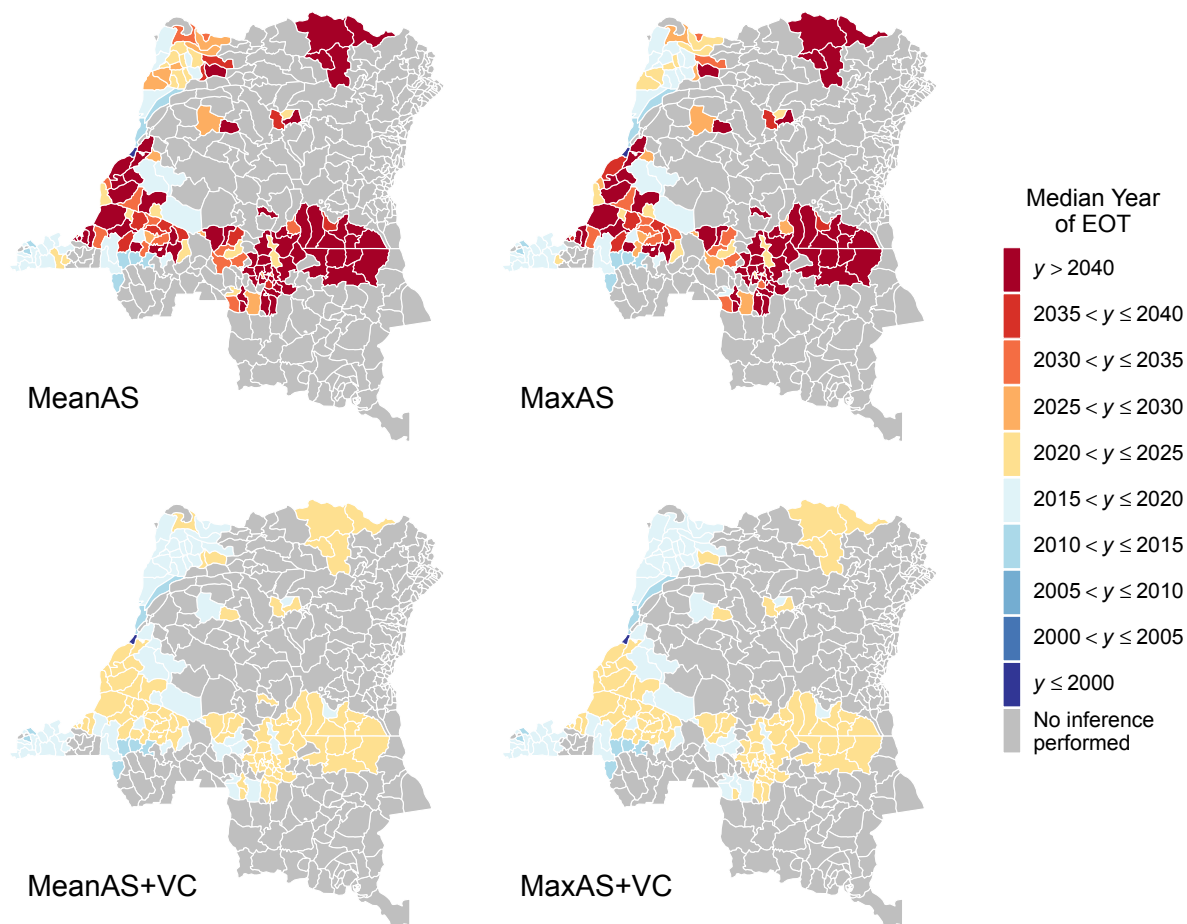


Figure 2: **Health zone median year of elimination of transmission (YEOT) maps for the DRC.** The median YEOT provides the year in which 50% of model simulations reach EOT in each health zone. The top two maps show strategies without VC (except for Yasa Bonga health zone which is shown with VC in all maps) and the bottom maps have VC strategies with 80% vector reduction. The left maps simulate continuation of the mean AS coverage and the right two simulate maximum AS coverage. The uncertainty of YEOT is not shown in these maps (only the average prediction). The exact median values and 95% prediction intervals for YEOT are available online (see S2 GUI).

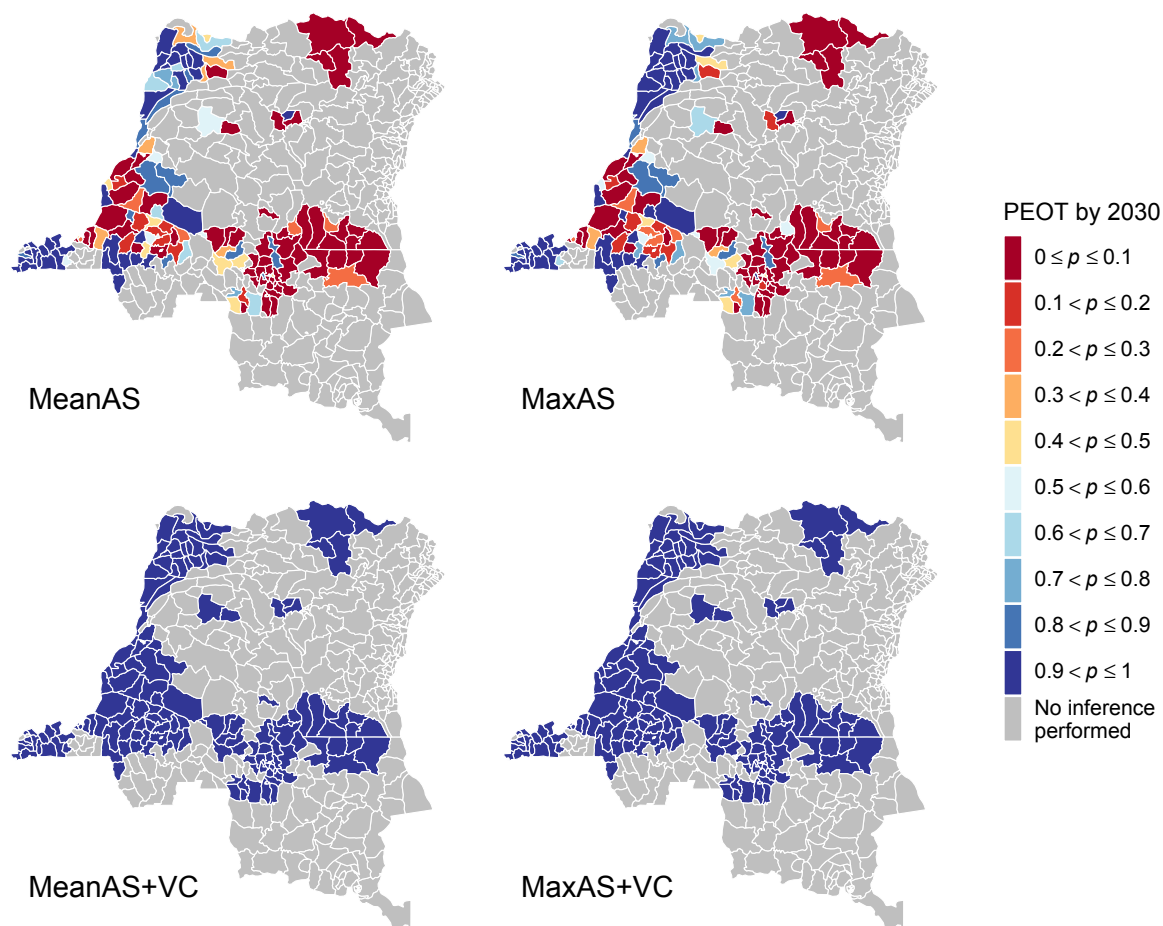


Figure 3: **Health zone probability of elimination of transmission (PEOT) by 2030 maps for the DRC.** PEOT reveals the uncertainty of model predictions about whether EOT will occur. Health zones with PEOT > 0.9 (dark blue) will be very likely to achieve EOT by 2030, and PEOT < 0.1 (dark red) will be very unlikely to meet it. Health zones with mid-range PEOT (0.3–0.7) have high uncertainty in the success or failure of the strategy to meet the goal either because (1) the median YEOT is close to 2030, or (2) the wide distribution in the predicted YEOT. The two identical maps (with PEOT = 1 everywhere) at the bottom show that VC is an efficient tool which ensures EOT has extremely high certainty. Maps of PEOT by other years are available online (see S2 GUI).

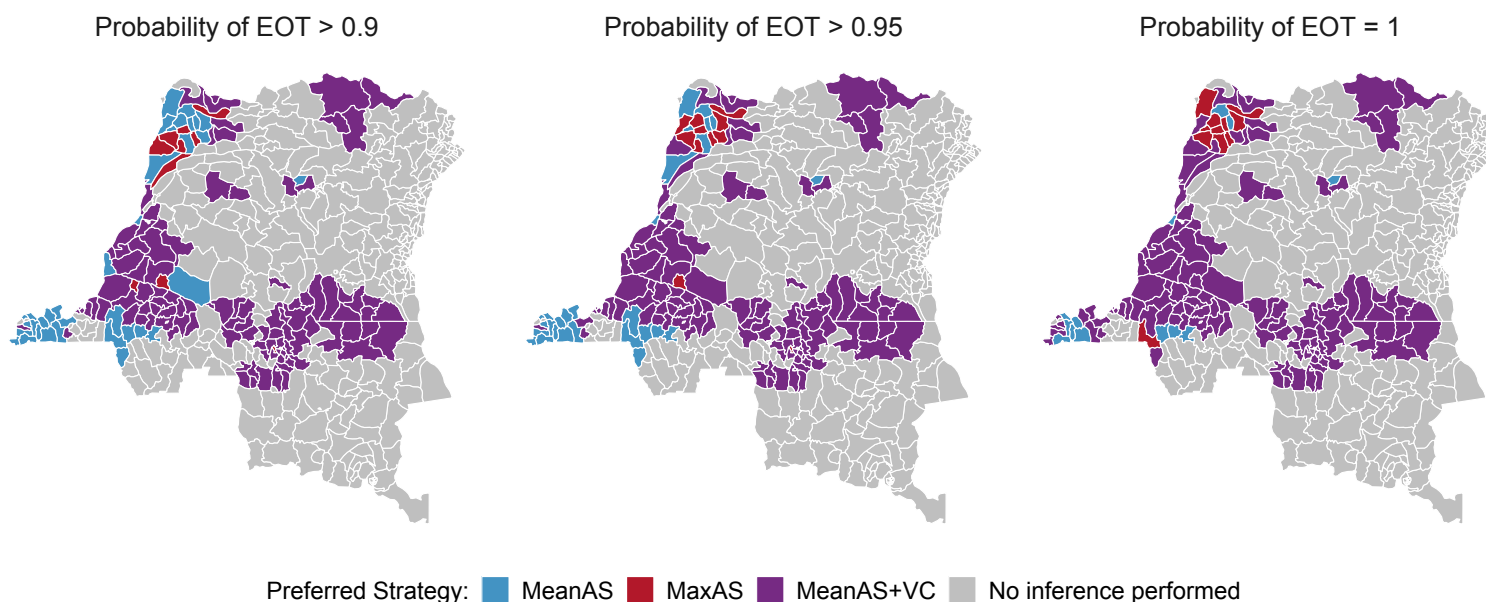


Figure 4: **Health zone preferred strategy maps for EOT by 2030 in the DRC.** The preferred strategy is defined as the least ambitious strategy which is predicted to achieve EOT by 2030 with a prescribed confidence level (90%, 95% and 100%). The order of ambition ranking is MeanAS, MaxAS, MeanAS+VC and MaxAS+VC. All health zones are predicted to achieve EOT by 2030 (PEOT = 1) under MeanAS+VC strategy so MaxAS+VC is absent here. MeanAS and MaxAS strategies were not considered in Yasa Bonga because VC started in mid-2015. Preferred strategy maps for smaller PEOT thresholds are available online (see S2 GUI).

## 250 4. Discussion

251 The integration of data, model assumptions, and model predictions identifies  
252 a priority shortlist of six health zones Bagata, Bandundu, Bolobo, Kikongo,  
253 Kwamouth, and Masi Manimba in the former Bandundu province (all of  
254 which have maximum AS coverage  $\geq 40\%$ ) as regions where VC is predicted  
255 to be a necessary supplementary tool for eliminating transmission by 2030  
256 (see S1 Model details). Other health zones predicted to miss the 2030 EOT  
257 goal could also benefit from this tool, although careful consideration is re-  
258 quired to assess whether scaling up medical interventions is easier to imple-  
259 ment than introducing large-scale VC. The reported effectiveness of VC is  
260 high in general but the variations between locations are non-negligible. Ac-  
261 cording to our sensitivity analysis on the effectiveness of VC (see S1 Model  
262 details), the time difference in achieving EOT could be several years longer  
263 with only 60% tsetse reduction, but this is still substantially faster than with  
264 medical-only interventions in many settings. Our model forecasting would  
265 be more accurate if the location-specific effectiveness of VC was taken into  
266 account (which is yet unknown in most health zones). Pessimistic model  
267 predictions can be found in some health zones where the coverage of AS is  
268 very low recently or historically. Low AS coverage creates additional un-  
269 certainty in model outputs and therefore can make model predictions overly  
270 pessimistic (i.e. they could overstate the need for VC in low- or very low-  
271 risk health zones). Exploring the minimum AS coverage required to achieve  
272 EOT by 2030 would be another mathematical modelling approach to address  
273 where and what kind of intensified interventions are needed to achieve EOT.

274 The presented model predictions are based on the model fitted to 2000–2016  
275 case data<sup>13</sup> and assumptions of different strategies starting from 2017. When  
276 the new data from 2017 onward becomes available, we will be able to use it  
277 to validate our model by changing assumed AS coverage to actual numbers  
278 of people screened and then comparing the predicted active and passive cases  
279 to reported cases. Subsequent re-fitting to the recent case data would fur-  
280 ther refine model predictions presented here and is an important step in  
281 the continuous process of modelling to support policy (see S1 Model details  
282 for details on how this study meets NTD-PRIME principles<sup>18</sup>). Our model  
283 framework is flexible and could be used to predict the impact of unexpected  
284 future changes by estimating how they could alter observable (i.e. reported  
285 cases and deaths) and unobservable variables (i.e. new infections); in the  
286 present climate of the COVID-19 pandemic and recent Ebola outbreaks in

287 gHAT-endemic parts of DRC, this is particularly relevant and could pro-  
288 vide support in planning whether subsequent gHAT interventions should be  
289 altered due to unforeseen interruptions.

290 The impact of other factors such as the screening of high-risk populations  
291 and possible animal reservoirs on gHAT transmission have been studied by  
292 mathematical modelling<sup>8,9,19,20,21,22</sup>. Recruiting high-risk individuals can, un-  
293 surprisingly, improve the effectiveness of AS and bring down the YEOT sub-  
294 stantially<sup>9</sup>; the present framework could be extended to quantify the impact  
295 of this type of improved AS. Models considering an animal reservoir have  
296 largely been inconclusive about the presence of zoonotic transmission (when  
297 using longitudinal human case data) however they have indicated that ani-  
298 mal reservoirs are unlikely to maintain the infection by themselves<sup>8,20</sup>. An  
299 analysis including animal reservoirs could yield different results for YEOT  
300 predictions presented here, although our previous work suggests that we  
301 would probably not expect large qualitative differences. Another concern  
302 is asymptomatic humans maintaining transmission<sup>23,24</sup>; although a few mod-  
303 elling studies have utilised frameworks explicitly incorporating asymptomatic  
304 human infections<sup>21,22,24</sup>, there is limited observational data to parameterise  
305 them with high certainty, and it is unclear how their inclusion in this study  
306 would impact projections.

307 A new oral drug to treat gHAT, fexinidazole has now been approved for use  
308 in DRC, and is being utilised in the country. Despite the obvious advantages  
309 for patients, ease of transport and administration, it is not deemed suitable  
310 for use in individuals without parasitological case confirmation<sup>25</sup>, and hence  
311 is unlikely to greatly impact on transmission as part of a strategy. A second  
312 oral drug, acoziborale, hoped to be a safe single-dose cure, is under clinical  
313 trial and could, in principle, radically change the paradigm of diagnostic and  
314 treatment algorithms, especially in an AS setting<sup>26</sup>. The non-toxic compound  
315 used in acoziborale may allow mobile screening teams to “overtreat” RDT-  
316 positive, gHAT suspects without parasitological confirmation. Mathematical  
317 modelling could be used to estimate the impact of several potential diagnostic  
318 and treatment algorithms and predict the impact of such strategies using  
319 acoziborale on EOT before they begin. These types of novel interventions  
320 could be particularly helpful as we approach the endgame for gHAT.

321 AS planning by PNLTHA-DRC is guided at a village level by WHO rec-  
322 ommendation. This includes stopping AS after three years of zero case de-



323 tection and then switching to “reactive AS” when new cases arise in PS<sup>27</sup>.  
324 In the present study our four strategies were assumed to carry on indefi-  
325 nitely without any stopping, however the economic gains and health risks  
326 of cessation should be examined. A previous health economic analysis con-  
327 cluded that VC can be cost-effective at low willingness-to-pay thresholds per  
328 disability-adjusted life year averted in high-risk settings<sup>28</sup>. Taking account of  
329 the PNLTHA-DRC algorithm of reactive screening, a novel health economic  
330 analysis based on predicted model dynamics would allow for the examination  
331 of cost-effective strategies rather than the “preferred strategy” presented here  
332 based on a cruder ranking of “ambition”.

333 Looking across at other infections targeted for elimination, the enormity  
334 of the challenge ahead becomes apparent – with many of these programmes  
335 reaching ever lower levels of disease, but failing to meet elimination deadlines.  
336 Modelling in this study suggests that, even though elimination of gHAT  
337 in the near future may be epidemiologically feasible with current tools, its  
338 wide-spread, low-level persistence across the DRC could prove operationally  
339 challenging for achievement of the goal in the short-term. In many regions  
340 there is considerable uncertainty whether current interventions are sufficient  
341 to meet EOT in the next ten years, yet the prospect of intensifying strategies  
342 in dozens of health zones may pose a large, or even insurmountable, burden  
343 on resources (financial and personnel). As further progress is made towards  
344 elimination of gHAT, it will become increasingly crucial to use data-driven  
345 methods to optimise the endgame pathway based on practical strategies and  
346 use these methods to quantify success.

#### 347 **Contributors**

348 CH, REC, and KSR developed the software and performed the analyses.  
349 REC, CH, and PB visualised the results. REC, EMM, and CS analysed the  
350 data. KSR developed the methods. CH and KSR wrote the original draft.  
351 KSR, SEFS, and MJK conceptualised the study. All authors reviewed and  
352 approved the final version for publication.

#### 353 **Declaration of interests**

354 We declare no competing interests.

355

#### 356 **Data sharing**

357 Data of the Atlas of human African trypanosomiasis can be requested by  
358 writing to: Jose Ramon Franco (francoj@who.int) or Gerardo Priotto (pri-

359 ottog@who.int). Data sharing is subject to WHO data-sharing policies and  
360 data-use agreements with the participating research centres. All model code  
361 is available at Open Science Framework (see S3 Model Code).

362

### 363 **Acknowledgments**

364 The authors thank PNLTHA for original data collection, WHO for data ac-  
365 cess (in the framework of the WHO HAT Atlas<sup>15</sup>), and Cyrus Sinai and Nicole  
366 Hoff from UCLA Fielding School of Public Health for providing health zone  
367 level shapefiles (current versions can be found at <https://data.humdata.org/dataset/drc-health-data>). This work was supported by the Bill  
368 and Melinda Gates Foundation ([www.gatesfoundation.org](http://www.gatesfoundation.org)) through the Hu-  
369 man African Trypanosomiasis Modelling and Economic Predictions for Pol-  
370 icy (HAT MEPP) project [OPP1177824] (CH, REC, PB, KSR, and MJK),  
371 through the NTD Modelling Consortium [OPP1184344, OPP1156227, and  
372 OPP1186851] (KSR, SEFS, and MJK), and through the TRYP-ELIM project  
373 [OPP1155293] (EMM and CS) and the Belgian Development Agency (EN-  
374 ABEL) (EMM and CS). The funders had no role in study design, data col-  
375 lection and analysis, decision to publish, or preparation of the manuscript.  
376

### 377 **Supplementary Information**

378 **S1 Model details.** Additional information on mathematical modelling  
379 methodology.

380 **S2 GUI.** Results for each health zone level projection can be viewed at:  
381 <https://hatmepp.warwick.ac.uk/projections/v1>.

382 **S3 Model Code.** The code used to simulate this work is available from:  
383 [https://osf.io/jza27/?view\\_only=d523cb1edf9c4828bc63cb197e5000b2](https://osf.io/jza27/?view_only=d523cb1edf9c4828bc63cb197e5000b2).

### 384 **References.**

385 1 World Health Organization. Global Health Observatory Data Repos-  
386 itory. [https://www.who.int/gho/neglected\\_diseases/human\\_african\\_trypanosomiasis/en/](https://www.who.int/gho/neglected_diseases/human_african_trypanosomiasis/en/) (accessed April 20, 2020).  
387

- 388 2 World Health Organization. WHO report on global surveil-  
389 lance of epidemic-prone infectious diseases. *WHO Technical Re-*  
390 *port* 2000. [https://www.who.int/csr/resources/publications/](https://www.who.int/csr/resources/publications/surveillance/WHO_CDS_CSR_ISR_2000_1/en/)  
391 [surveillance/WHO\\_CDS\\_CSR\\_ISR\\_2000\\_1/en/](https://www.who.int/csr/resources/publications/surveillance/WHO_CDS_CSR_ISR_2000_1/en/) (accessed April 20,  
392 2020).
- 393 3 Franco JR, Cecchi G, Priotto G, et al. Monitoring the elimination of  
394 human African trypanosomiasis at continental and country level: Up-  
395 date to 2018. *PLOS Neglected Tropical Diseases* 2020; **14**: e0008261.
- 396 4 World Health Organization. Report of a WHO meeting on elimina-  
397 tion of human African trypanosomiasis (trypanosoma brucei gambi-  
398 ense). *WHO Technical Report* 2013. [https://apps.who.int/iris/](https://apps.who.int/iris/handle/10665/79689)  
399 [handle/10665/79689](https://apps.who.int/iris/handle/10665/79689) (accessed April 20, 2020).
- 400 5 Franco JR, Simarro PP, Diarra A, Ruiz-Postigo JA, Jannin JG. The  
401 journey towards elimination of gambiense human African trypanoso-  
402 miasis: not far, nor easy. *Parasitology* 2014; **141**: 748–760.
- 403 6 Molyneux DH, Hopkins DR, Zagaria N. Disease eradication, elimina-  
404 tion and control: the need for accurate and consistent usage. *Trends*  
405 *in Parasitology* 2004; **20**: 347–351.
- 406 7 Rock K, Pandey A, Ndeffo-Mbah M, Atkins K, Lumbala C, Galvani  
407 A, Keeling M. Data-driven models to predict the elimination of sleep-  
408 ing sickness in former Equateur province of DRC. *Epidemics* 2017;  
409 **18**: 101–112.
- 410 8 Rock KS, Torr SJ, Lumbala C, Keeling MJ. Quantitative evaluation  
411 of the strategy to eliminate human African trypanosomiasis in the  
412 Democratic Republic of Congo. *Parasites & Vectors* 2015; **8**: 532.
- 413 9 Rock KS, Torr SJ, Lumbala C, Keeling MJ. Predicting the impact  
414 of intervention strategies for sleeping sickness in two high-endemicity  
415 health zones of the Democratic Republic of Congo. *PLOS Neglected*  
416 *Tropical Diseases* 2017; **11**: e0005162.
- 417 10 de Vries H, Wagelmans APM, Hasker E, Lumbala C, Lutumba P,  
418 de Vlas SJ, Klundert Jvd. Forecasting human African trypanosomia-  
419 sis prevalences from population screening data using continuous time  
420 models. *PLOS Computational Biology* 2016; **12**: e1005103.

- 421 11 Davis CN, Rock KS, Mwamba Miaka E, Keeling MJ. Village-scale  
422 persistence and elimination of gambiense human African trypanoso-  
423 miasis. *PLOS Neglected Tropical Diseases* 2019; **13**: e0007838.
- 424 12 Castaño MS, Aliee M, Mwamba Miaka E, Keeling MJ, Chitnis N,  
425 Rock KS. Screening strategies for a sustainable endpoint for gambi-  
426 ense sleeping sickness. *The Journal of Infectious Diseases* 2020; pp.  
427 S539–S545.
- 428 13 Crump RE, Huang C, Knock E, et al. Quantifying epidemiologi-  
429 cal drivers of gambiense human African trypanosomiasis across the  
430 Democratic Republic of Congo. *medRxiv* 2020; [https://doi.org/](https://doi.org/10.1101/2020.06.23.20138065)  
431 [10.1101/2020.06.23.20138065](https://doi.org/10.1101/2020.06.23.20138065) (accessed June 23, 2020).
- 432 14 Tirados I, Stanton MC, Selby R, et al. Impact of tiny targets on  
433 *Glossina fuscipes quanzensis*, the primary vector of human African  
434 trypanosomiasis in the Democratic Republic of the Congo. *bioRxiv*  
435 2020; <https://doi.org/10.1101/2020.04.07.029587> (accessed  
436 April 20, 2020).
- 437 15 Franco JR, Cecchi G, Priotto G, et al. Monitoring the elimination of  
438 human African trypanosomiasis: Update to 2016. *PLOS Neglected*  
439 *Tropical Diseases* 2018; **12**: e0006890.
- 440 16 Simarro PP, Cecchi G, Franco JR, et al. Monitoring the progress  
441 towards the elimination of gambiense human African trypanosomiasis.  
442 *PLOS Neglected Tropical Diseases* 2015; **9**: e0003785.
- 443 17 NTD Modelling Consortium Discussion Group on Gambiense Human  
444 African Trypanosomiasis. Insights from quantitative and mathemati-  
445 cal modelling on the proposed 2030 goal for gambiense human African  
446 trypanosomiasis (gHAT) [version 2; peer review: 2 approved]. *Gates*  
447 *Open Research* 2020; **3**: 1553.
- 448 18 Behrend MR, Basáñez MG, Hamley JID, et al. Modelling for pol-  
449 icy: The five principles of the Neglected Tropical Diseases Modelling  
450 Consortium. *PLOS Neglected Tropical Diseases* 2020; **14**: e0008033.
- 451 19 Stone CM Chitnis N. Implications of heterogeneous biting exposure  
452 and animal hosts on Trypanosomiasis brucei gambiense transmission  
453 and control. *PLOS Computational Biology* 2015; **11**: e1004514.

- 454 20 Mahamat MH, Peka M, Rayaisse Jb, et al. Adding tsetse control to  
455 medical activities contributes to decreasing transmission of sleeping  
456 sickness in the Mandoul focus (Chad). *PLOS Neglected Tropical Dis-*  
457 *eases* 2017; **11**: e0005792.
- 458 21 Rock KS, Ndeffo-Mbah ML, Castaño S, et al. Assessing strategies  
459 against gambiense sleeping sickness through mathematical modeling.  
460 *Clinical Infectious Diseases* 2018; **66**: S286–S292.
- 461 22 Castaño MS, Ndeffo-Mbah ML, Rock KS, et al. Assessing the im-  
462 pact of aggregating disease stage data in model predictions of human  
463 African trypanosomiasis transmission and control activities in Ban-  
464 dundu province (DRC). *PLOS Neglected Tropical Diseases* 2020; **14**:  
465 e0007976.
- 466 23 Büscher P, Bart JM, Boelaert M, et al. Do cryptic reservoirs threaten  
467 gambiense-sleeping sickness elimination? *Trends in Parasitology*  
468 2018; **34**: 197–207.
- 469 24 Capewell P, Atkins K, Weir W, et al. Resolving the apparent trans-  
470 mission paradox of African sleeping sickness. *PLOS Biology* 2019;  
471 **17**: e3000105.
- 472 25 World Health Organization. WHO interim guidelines for the treat-  
473 ment of gambiense human African trypanosomiasis. *WHO Technical*  
474 *Report* 2019. [https://www.who.int/trypanosomiasis\\_african/](https://www.who.int/trypanosomiasis_african/resources/9789241550567/en/)  
475 [resources/9789241550567/en/](https://www.who.int/trypanosomiasis_african/resources/9789241550567/en/) (accessed April 20, 2020).
- 476 26 ClinicalTrials.gov [Internet]. Bethesda (MD): National Library of  
477 Medicine (US). 2000 Feb 29 - . Identifier NCT03087955, Prospec-  
478 tive Study on Efficacy and Safety of Acoziborole (SCYX-7158) in  
479 Patients Infected by Human African Trypanosomiasis Due to T.b.  
480 Gambiense (OXA002); March 23, 2017 [cited April 20, 2020]; [about  
481 4 screens]. Available from: [https://www.clinicaltrials.gov/ct2/](https://www.clinicaltrials.gov/ct2/show/NCT03087955)  
482 [show/NCT03087955](https://www.clinicaltrials.gov/ct2/show/NCT03087955) (accessed April 20, 2020).
- 483 27 World Health Organization. Control and surveillance of human  
484 African trypanosomiasis: report of a WHO expert committee. *WHO*  
485 *Technical Report* 2013. [https://apps.who.int/iris/handle/](https://apps.who.int/iris/handle/10665/95732)  
486 [10665/95732](https://apps.who.int/iris/handle/10665/95732) (accessed April 20, 2020).

487 28 Sutherland CS, Stone CM, Steinmann P, Tanner M, Tediosi F. Seeing  
488 beyond 2020: an economic evaluation of contemporary and emerg-  
489 ing strategies for elimination of *Trypanosoma brucei gambiense*. *The*  
490 *Lancet Global Health* 2017; **5**: e69–e79.