

1 **Profiling pre-symptomatic and asymptomatic cases with confirmed SARS-CoV-2**
2 **infection in Mexico City**

3 Omar Yaxmehen Bello-Chavolla MD, PhD^{1*}, Neftali Eduardo Antonio-Villa MD², Arsenio
4 Vargas-Vázquez², Carlos A. Fermín-Martínez², Alejandro Márquez-Salinas², Jessica Paola
5 Bahena-López MD²

6
7 ¹Division of Research, Instituto Nacional de Geriátria. ²MD/PhD (PECEM), Faculty of Medicine,
8 National Autonomous University of Mexico.

9
10 **Short title:** Asymptomatic SARS-CoV-2 in Mexico City

11
12 **Corresponding author**

13 Omar Yaxmehen Bello-Chavolla. Division of Research. Instituto Nacional Geriátria. Anillo Perif.
14 2767, San Jerónimo Lídice, La Magdalena Contreras, 10200, Mexico City, Mexico. Phone: +52
15 (55) 5548486885. E-mail: oyaxbell@yahoo.com.mx

16 **CONFLICT OF INTERESTS:** Nothing to disclose.

17 **FUNDING:** This research received no specific funding

18 **Word count:** 1,322 words; 2 Figures, 1 Table.

19 **ABSTRACT (250 WORDS)**

20 **BACKGROUND:** Asymptomatic SARS-CoV-2 infections are potential sources for
21 transmission.

22 **OBJECTIVES:** Here, we aimed to profile pre-symptomatic/asymptomatic SARS-CoV-2
23 infections in Mexico City, its associated comorbidities and outcomes.

24 **METHODS:** Prospective observational study of SARS-CoV-2 cases assessed by contact
25 tracing within the National Epidemiological Surveillance System in Mexico City. We classified
26 subjects as cases with and without respiratory and non-respiratory symptoms (RS, NRS,
27 respectively) assessed for SARS-CoV-2 using real time RT-PCR from nasopharyngeal swabs
28 to evaluate clinical characteristics as well as features associated with severe COVID-19.

29 **RESULTS:** Amongst 80735 cases with confirmed SARS-CoV-2 infection as of July 23th, 2020,
30 we identified 9659 cases without RS (12.0%), 5605 had only NRS (6.9%) and 4054 who were
31 initially asymptomatic (5.1%). Compared to asymptomatic cases, NRS cases and those with
32 RS+NRS had higher rates of severe COVID-19 outcomes including hospitalization, ICU
33 admission, and intubation ($p < 0.001$). Mortality was higher for cases with RS+NRS (HR 7.58,
34 95%CI 4.56-12.58) or NRS (HR 3.13, 95%CI 1.80-5.45) compared to asymptomatic cases,
35 adjusted for age, sex and comorbidities. Predictors for mortality in asymptomatic SARS-Co-V-
36 2 infections, chronic kidney disease, previous exposure with suspected infection cases and
37 older age were predictors for lethality.

38 **CONCLUSIONS:** Definition of pre-symptomatic/asymptomatic cases has relevant implications
39 for SARS-CoV-2 infection outcomes. Older age and comorbidity impact on the probability of
40 developing severe complications for cases who were asymptomatic or had only NRS at
41 evaluation and were sent for domiciliary treatment. Extending testing for detection of
42 asymptomatic cases must be considered in Mexico to better understand the impact of the
43 pandemic.

44 **Keywords:** SARS-CoV-2; Asymptomatic; Pre-symptomatic; Mexico; COVID-19 outcomes

45 INTRODUCTION

46 Asymptomatic infections are a potential source of rapid SARS-CoV-2 spread [1]. Prevalence
47 of pre-symptomatic/asymptomatic cases varies widely but represent a larger proportion of
48 cases than previously anticipated [2]. Controversies surrounding asymptomatic SARS-CoV-2
49 infections have focused on the distinction between pre-symptomatic and asymptomatic
50 infection and its definitions, which have focused on respiratory symptoms (RS), primarily cough,
51 dyspnea and fever. Nevertheless, longitudinal data shows that only a fraction of initially
52 asymptomatic infections develop subsequent symptoms [3–5]. In Mexico, SARS-CoV-2 testing
53 focuses on sampling high-risk cases, which allowed characterization of increased susceptibility
54 for severe COVID-19 attributable to cardio-metabolic comorbidities [6]; however, no data has
55 been reported on asymptomatic SARS-CoV-2 infections. Lack of information regarding pre-
56 symptomatic/asymptomatic cases in Mexico is concerning, particularly since many studies
57 suggest that contact tracing of asymptomatic infections will be pivotal to contain further SARS-
58 CoV-2 spread [7]. Here, we profile pre-symptomatic/asymptomatic cases of SARS-CoV-2
59 infections to assess outcomes depending on its definitions using cases detected in Mexico City.

60 METHODS

61 We analyzed data from the National Epidemiological Surveillance System in the Greater
62 Mexico City area, an open-source dataset comprising daily updated cases tested using real-
63 time RT-PCR to confirm SARS-CoV-2 using nasopharyngeal swabs according to the Berlin
64 Protocol [8]. RS included fever, dyspnea, cough, polypnea or cyanosis at initial evaluation,
65 whilst non-RS (NRS) included headache, myalgias, arthralgias, general malaise, abdominal
66 pain, chest pain, conjunctivitis, irritability or vomiting. We defined cases with RS+NRS with ≥ 1
67 RS and any or none NRS. Cases with NRS had ≥ 1 NRS without RS, whilst asymptomatic cases
68 had no symptoms. Pre-symptomatic cases were initially asymptomatic but eventually required
69 hospital admission after follow-up. To contrast previous definitions of pre-
70 symptomatic/asymptomatic cases based only on RS, we combined asymptomatic and NRS

71 cases and referred to them as cases without RS (WoRS); we confirmed these definitions using
72 correspondence analyses to cluster symptoms with comparable similarity (**Supplementary**
73 **Material**). NRS and asymptomatic cases were assessed outside the established framework for
74 suspected COVID-19 cases in Mexico by convenience sampling and contact tracing. We also
75 estimated 7-day rolling average positivity rates (PR) for RS+NRS, NRS and asymptomatic/pre-
76 symptomatic cases. Follow-up was conducted for all non-hospitalized cases up to 14 days;
77 outcomes for all patients included hospital discharge due to clinical improvement or voluntary,
78 ambulatory/treatment follow-up or death. Severe COVID-19 was defined as a composite of
79 death, ICU admission and intubation. Complete description of statistical analyses and available
80 variables are detailed in **Supplementary Material**.

81 **RESULTS**

82 Study population

83 As of 23rd July 2020, a total of 212,708 subjects were tested for SARS-CoV-2 in Mexico City.
84 From 80,735 cases with confirmed SARS-CoV-2 infection (Positivity rate 49.0%), 9,659 cases
85 were WoRS (12.0%). Overall, 23,992 NRS cases had been evaluated, amongst whom 5,605
86 had confirmed SARS-CoV-2 infection (Overall Positivity rate: 26.5%); similarly, 21,628 initially
87 asymptomatic cases were evaluated and 4,054 cases had confirmed SARS-CoV-2 infection
88 (Positivity rate: 21.4%). Notably, 7-day PRs had been steadily decreasing for all patient
89 categories (**Supplementary Material**). NRS cases were younger, predominantly female and,
90 interestingly, had lower prevalence of NRS compared to cases with RS+NRS. Initially
91 asymptomatic cases were younger compared to RS+NRS cases, with similar trends for lower
92 rates of comorbidities compared to both RS+NRS and NRS cases (**Figure 1, Table 1**).

93 Profiling NRS cases with SARS-CoV-2 infection

94 Amongst NRS cases (n=5,605), 283 subjects were hospitalized (5.0%), 26 required mechanical
95 ventilatory support (MVS) (0.5%), 27 required intensive care unit (ICU) admission (0.5%).
96 Overall, 96 patients died (1.7%), of whom 22 were ambulatory and 74 hospitalized. Predictors

97 increased risk for severe COVID-19 in NRS cases included vomiting, diabetes, and
98 hypertension; decreased risk of severe COVID-19 was associated with rhinorrhea, previous
99 exposure to suspected viral cases and healthcare workers. Independent predictors of mortality
100 in NRS included older age, diabetes, chronic obstructive pulmonary disease (COPD), chronic
101 kidney disease (CKD) and decreased risk associated with previous exposure to suspected viral
102 cases (**Supplementary Material**). After follow-up, 481 patients were still under domiciliary
103 surveillance, 109 remained hospitalized, 97 were discharged after recovery, 3 had voluntary
104 discharge and 4,819 had completed follow-up with domiciliary surveillance without developing
105 RS (86.0%).

106 *Profiling pre-symptomatic/asymptomatic cases with SARS-CoV-2 infection*

107 Amongst initially asymptomatic patients (n=4,054), 139 were hospitalized (3.4%), 9 required
108 MVS (0.2%) and 29 required ICU admission (0.7%). We recorded 24 deaths (0.6%) amongst
109 whom 8 were ambulatory and 16 were hospitalized (**Table 1**). Predictors for severe COVID-19
110 included younger age, cardiovascular disease, CKD, diabetes and a reduced risk associated
111 to known previous exposure to suspected viral cases; predictors of lethality included older age
112 and CKD. Currently, 444 patients were still under domiciliary surveillance, 84 remained
113 hospitalized, 38 were discharged after recovery, 1 had a voluntary discharge, and 3,463 had
114 completed follow-up without developing symptoms (85.4%).

115 *Predictors and outcomes for RS+NRS, NRS and asymptomatic cases*

116 Compared to asymptomatic, NRS cases were associated with younger age, reduced previous
117 viral exposure, healthcare workers, diabetes, obesity, female sex, hypertension and smoking.
118 Similarly, compared to WoRS, RS+NRS cases were associated with asthma, COPD, older age,
119 male sex, diabetes, obesity, hypertension, reduced previous viral exposure (**Figure 2**).
120 Compared to pre-symptomatic/asymptomatic cases, risk of severe COVID-19 was not
121 significantly higher for NRS, but it was for RS+NRS (HR 3.91, 95%CI 2.95-5.18), adjusted for
122 age, sex and comorbidities. However, NRS and RS+NRS had higher mortality compared to

123 asymptomatic cases (Breslow-Cox $p < 0.001$, **Figure 2**); adjusting for age, sex and
124 comorbidities, NRS (HR 2.32, 95%CI 1.48-3.63) or RS+NRS cases (HR 6.22, 95%CI 4.17-
125 9.29) retained higher mortality compared to asymptomatic cases.

126 **DISCUSSION**

127 Here, we present a comprehensive report of pre-symptomatic/asymptomatic COVID-19 cases
128 in Mexico City. We show that the definition of asymptomatic SARS-CoV-2 infection should be
129 extended beyond RS to identify subjects at lowest risk of subsequent complications for
130 domiciliary treatment who might contribute to further SARS-CoV-2 spread. We also report a
131 low prevalence of pre-symptomatic cases amongst those who were initially classified as
132 asymptomatic but eventually were hospitalized or had outcomes related to severe COVID-19
133 [9]. This data confirms observations from other populations and highlights the relevance of
134 identifying pre-symptomatic/asymptomatic cases, given conflicting evidence on viral shedding
135 for pre-symptomatic/asymptomatic cases, and data suggesting evidence of subclinical lung
136 abnormalities which must be assessed longitudinally to rule out long-term impacts of SARS-
137 CoV-2 infection [10]. Notably, a consistent predictor of outcomes for NRS cases and pre-
138 symptomatic/asymptomatic cases are previous exposure to suspected viral cases, highlighting
139 the relevance of contact tracing and prompt case identification.

140 Studies assessing natural history of asymptomatic SARS-CoV-2 infections highlighted the role
141 of age and comorbidity in the subsequent development of symptoms, which is consistent with
142 our observations [11]. Domiciliary surveillance in Mexico City focused on outcomes but not
143 individual symptom onset, which might limit our ability to identify all pre-symptomatic cases,
144 particularly those who only develop mild symptoms. Regardless, only a small fraction of pre-
145 symptomatic cases developed severe COVID-19 after being initially determined as
146 asymptomatic, most of whom had underlying cardio-metabolic comorbidities or were
147 susceptible for complications of COVID-19 attributable to unmasked cardiometabolic
148 comorbidities. Asymptomatic SARS-CoV-2 infections have been postulated to elicit lower

149 immune responses and diminished antibody production compared to symptomatic cases.
150 Severe COVID-19 in pre-symptomatic cases might be attributable to a combination of
151 decreased early immune response to SARS-CoV-2 infection and late enhanced pro-
152 inflammatory responses in subjects with comorbidities [10,12]. This might also extend to
153 subjects with NRS with COVID-19 whom have previously been reported to delay seeking
154 medical attention and have prolonged viral shedding compared with subjects with RS [13].
155 Here, we assessed a thorough constellation of symptoms in one of the largest studies of pre-
156 symptomatic/asymptomatic SARS-CoV-2 infections. Limitations include non-assessment of
157 atypical SARS-CoV-2 symptoms which might occur amongst otherwise asymptomatic cases,
158 particularly in older adults [14], and the lack of systematized sampling, which does not allow
159 for an accurate estimation for the rates of asymptomatic cases in Mexico City. Our results
160 highlight the need to systematize definition of asymptomatic cases and extend testing by
161 contact tracing to detect asymptomatic SARS-CoV-2 infections as one of the mitigations
162 strategies to reduce transmission of SARS-CoV-2 in Mexico City and Mexico in general [15].

163

164 **ACKNOWLEDGMENTS**

165 NEAV, JPBL, and AVV are enrolled at the PECEM program of the Faculty of Medicine at
166 UNAM. JPBL and AVV are supported by CONACyT. The authors would like to acknowledge
167 the invaluable work of all of Mexico's healthcare community in managing the COVID-19
168 epidemic. Its participation in the COVID-19 surveillance program has made this work a reality,
169 we are thankful for your effort.

170 **DATA AVAILABILITY**

171 All data sources and R code are available for reproducibility of results at
172 https://github.com/oyaxbell/covid_asymptomatic_cdmx.

173 **AUTHOR CONTRIBUTIONS**

174 Research idea and study design OYBC, NEAV, AVV, JPBL, CAFM, AMS; data acquisition:
175 OYBC; data analysis/interpretation: OYBC, JPBL, NEAV, AVV, CAFM, AMS; statistical
176 analysis: OYBC; manuscript drafting: OYBC, NEAV, AVV, JPBL, CAFM, AMS; supervision or
177 mentorship: OYBC. Each author contributed important intellectual content during manuscript
178 drafting or revision and accepts accountability for the overall work by ensuring that questions
179 about the accuracy or integrity of any portion of the work are appropriately investigated and
180 resolved.

181 **FUNDING:** No funding was received.

182 **CONFLICT OF INTEREST/FINANCIAL DISCLOSURE:** Nothing to disclose.

183

184 **REFERENCES**

- 185 1. Buitrago-Garcia DC, Egli-Gany D, Counotte MJ, Hossmann S, Imeri H, Salanti G, et al.
186 The role of asymptomatic SARS-CoV-2 infections: rapid living systematic review and
187 meta-analysis. medRxiv. 2020; doi:10.1101/2020.04.25.20079103
- 188 2. Oran DP, Topol EJ. Prevalence of Asymptomatic SARS-CoV-2 Infection: A Narrative
189 Review. *Ann Intern Med.* 2020; doi:10.7326/M20-3012
- 190 3. Arons MM, Hatfield KM, Reddy SC, Kimball A, James A, Jacobs JR, et al.
191 Presymptomatic SARS-CoV-2 Infections and Transmission in a Skilled Nursing Facility.
192 *N Engl J Med.* 2020;382: 2081–2090. doi:10.1056/NEJMoa2008457
- 193 4. Sakurai A, Sasaki T, Kato S, Hayashi M, Tsuzuki S-I, Ishihara T, et al. Natural History of
194 Asymptomatic SARS-CoV-2 Infection. *N Engl J Med.* 2020;
195 doi:10.1056/NEJMc2013020
- 196 5. Imperial College COVID-19 Response Team, Lavezzo E, Franchin E, Ciavarella C,
197 Cuomo-Dannenburg G, Barzon L, et al. Suppression of a SARS-CoV-2 outbreak in the
198 Italian municipality of Vo. *Nature.* 2020; doi:10.1038/s41586-020-2488-1
- 199 6. Bello-Chavolla OY, Bahena-López JP, Antonio-Villa NE, Vargas-Vázquez A, González-
200 Díaz A, Márquez-Salinas A, et al. Predicting mortality due to SARS-CoV-2: A
201 mechanistic score relating obesity and diabetes to COVID-19 outcomes in Mexico. *J*
202 *Clin Endocrinol Metab.* 2020; doi:10.1210/clinem/dgaa346
- 203 7. Huff HV, Singh A. Asymptomatic transmission during the COVID-19 pandemic and
204 implications for public health strategies. *Clin Infect Dis.* 2020; doi:10.1093/cid/ciaa654
- 205 8. Covid-19 SINAVE Ciudad de México — Datos CDMX [Internet]. [cited 28 Jun 2020].
206 Available: <https://datos.cdmx.gob.mx/explore/dataset/base-covid-sinave/table/>
- 207 9. Meng H, Xiong R, He R, Lin W, Hao B, Zhang L, et al. CT imaging and clinical course of
208 asymptomatic cases with COVID-19 pneumonia at admission in Wuhan, China. *J Infect.*
209 2020;81: e33–e39. doi:10.1016/j.jinf.2020.04.004

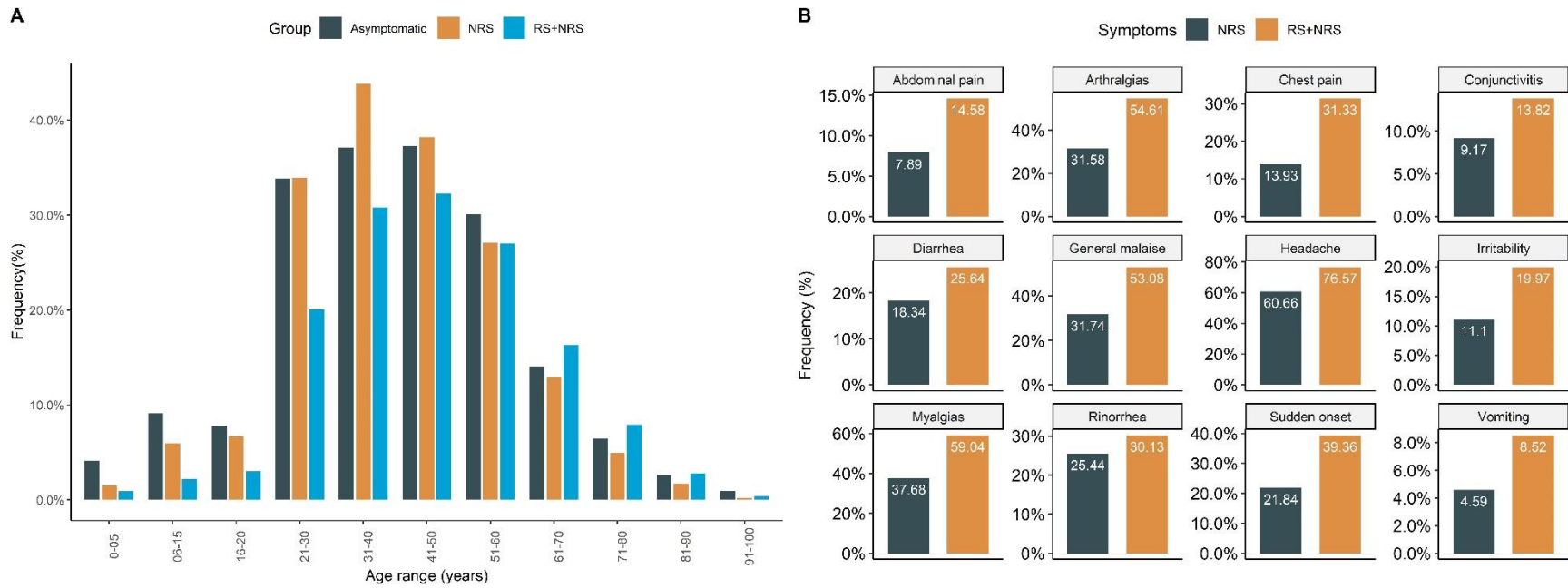
- 210 10. Long Q-X, Tang X-J, Shi Q-L, Li Q, Deng H-J, Yuan J, et al. Clinical and immunological
211 assessment of asymptomatic SARS-CoV-2 infections. *Nat Med.* 2020;
212 doi:10.1038/s41591-020-0965-6
- 213 11. [2006.08471] Probability of symptoms and critical disease after SARS-CoV-2 infection
214 [Internet]. [cited 28 Jun 2020]. Available: <https://arxiv.org/abs/2006.08471>
- 215 12. Azkur AK, Akdis M, Azkur D, Sokolowska M, van de Veen W, Brügggen M-C, et al.
216 Immune response to SARS-CoV-2 and mechanisms of immunopathological changes in
217 COVID-19. *Allergy.* 2020; doi:10.1111/all.14364
- 218 13. Han C, Duan C, Zhang S, Spiegel B, Shi H, Wang W, et al. Digestive Symptoms in
219 COVID-19 Patients With Mild Disease Severity: Clinical Presentation, Stool Viral RNA
220 Testing, and Outcomes. *Am J Gastroenterol.* 2020;115: 916–923.
221 doi:10.14309/ajg.0000000000000664
- 222 14. Varatharaj A, Thomas N, Ellul MA, Davies NWS, Pollak TA, Tenorio EL, et al.
223 Neurological and neuropsychiatric complications of COVID-19 in 153 patients: a UK-
224 wide surveillance study. *The Lancet Psychiatry.* 2020; doi:10.1016/S2215-
225 0366(20)30287-X
- 226 15. Gandhi M, Yokoe DS, Havlir DV. Asymptomatic Transmission, the Achilles' Heel of
227 Current Strategies to Control Covid-19. *N Engl J Med.* 2020;382: 2158–2160.
228 doi:10.1056/NEJMe2009758
229

230 **Table 1.** Descriptive characteristics of symptomatic and asymptomatic SARS-CoV-2 cases in Mexico City. *Abbreviations:* COPD:
 231 Chronic obstructive pulmonary disease; HIV/AIDS: Human immunodeficiency virus and/or acquired immunodeficiency
 232 syndrome; CKD: Chronic kidney disease, CDV: Cardiovascular disease; HCW: Healthcare worker

Parameter	RS+NRS (n=71,076)	NRS (n=5,605)	Pre-asymptomatic/ Asymptomatic	P-value
			(n=4,054)	
Male sex (%)	38125 (53.6)	2427 (43.3)	2135 (52.7)	<0.001
Age (years)	45.92±16.37	40.94±15.75	40.94±17.86	<0.001
Mortality (%)	8556 (12.0)	96 (1.7)	24 (0.6)	<0.001
Hospitalizacion (%)	19439 (27.3)	283 (5.0)	139 (3.4)	<0.001
ICU admission (%)	1668 (2.3)	27 (0.5)	29 (0.7)	<0.001
Mechanical-Ventilation (%)	2809 (4.0)	26 (0.5)	9 (0.2)	<0.001
Severe COVID-19 (%)	9565 (13.5)	111 (2.0)	49 (1.2)	<0.001
Previous viral exposure (%)	28304 (39.8)	3189 (56.9)	2387 (58.7)	<0.001
Diabetes (%)	10903 (15.3)	506 (9.0)	243 (6.0)	<0.001

COPD (%)	1131 (1.6)	33 (0.6)	21 (0.5)	<0.001
Asthma (%)	1694 (2.4)	107 (1.9)	46 (1.1)	<0.001
HIV/AIDS (%)	322 (0.5)	19 (0.3)	7 (0.2)	0.016
Obesity (%)	14185 (20.0)	809 (14.4)	312 (7.7)	<0.001
Smoking status (%)	7521 (10.6)	616 (11.0)	272 (6.7)	<0.001
CVD (%)	1680 (2.4)	92 (1.6)	40 (1.0)	<0.001
Hypertension (%)	13078 (18.4)	632 (11.3)	303 (7.47)	<0.001
Immunosuppression (%)	1092 (1.5)	53 (0.9)	42 (1.0)	<0.001
CKD (%)	1321 (1.9)	50 (0.9)	28 (0.7)	<0.001
Healthcare worker (%)	11532 (16.2)	1115 (19.9)	443 (10.9)	<0.001

234 **FIGURE LEGENDS**



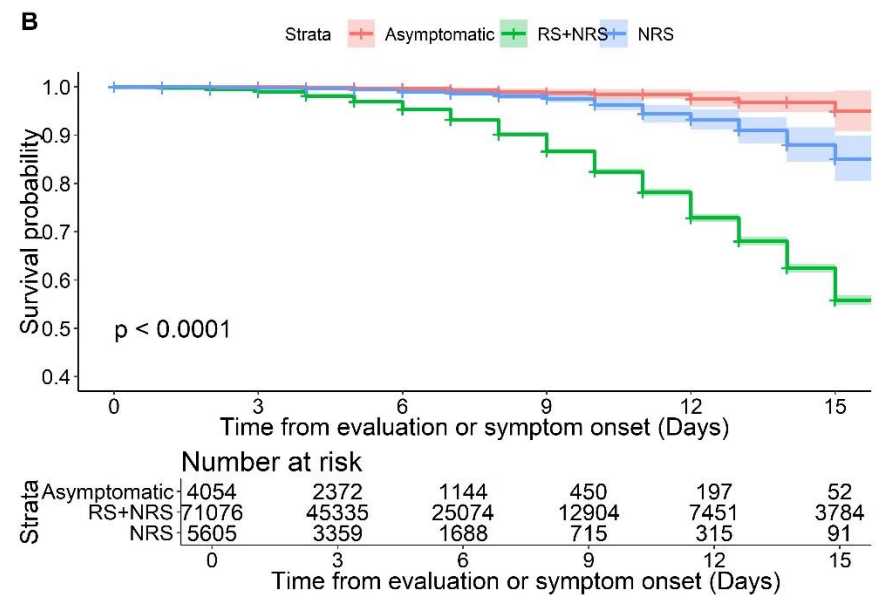
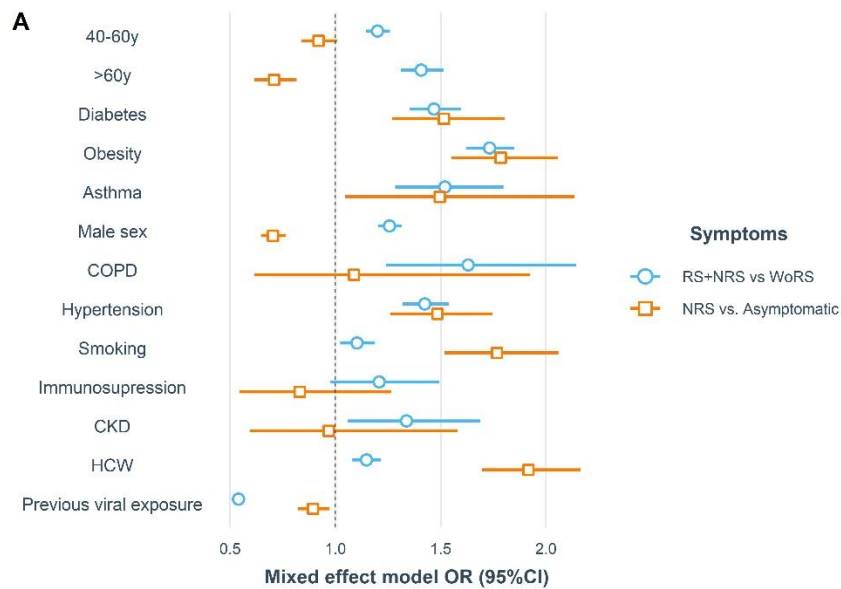
235

236 **FIGURE 1.** Histogram comparing case distribution according to age groups comparing cases with RS+NRS, NRS and asymptomatic
 237 SARS-CoV-2 infection, demonstrating the role of age in determining asymptomatic SARS-CoV-2 infections (A). We also show a
 238 comparison of the distribution of NRS related to SARS-CoV-2 infections in subjects with RS+NRS and NRS only.

239 Abbreviations: RS: Respiratory symptoms; NRS: Non-respiratory Symptoms; Sudden onset: Patient report of sudden onset of
 240 symptomatology.

241

242



243

244 **FIGURE 2.** Factors associated with presence of RS+NRS compared to WoRS (NRS + Asymptomatic), and NRS compared to
 245 asymptomatic cases (NRS) with SARS-CoV-2 infection (A). We also show the and comparison of 30-day mortality rates between
 246 RS+NRS cases, NRS and asymptomatic SARS-CoV-2 infections in Mexico City.

247 Abbreviations: RS: Respiratory symptoms; NRS: Non-respiratory Symptoms; COPD: Chronic obstructive pulmonary disease; CKD:
 248 Chronic kidney disease; HCW: Health-care workers; Previous viral exposure: Prior contact with a patient with suspected viral infection.