

1 **Profiling pre-symptomatic and asymptomatic cases with confirmed SARS-CoV-**

2 **2 infection in Mexico City**

3 Omar Yaxmehen Bello-Chavolla MD, PhD<sup>1\*</sup>, Neftali Eduardo Antonio-Villa MD<sup>2</sup>, Arsenio  
4 Vargas-Vázquez<sup>2</sup>, Carlos A. Fermín-Martínez<sup>2</sup>, Alejandro Márquez-Salinas<sup>2</sup>, Jessica Paola  
5 Bahena-López MD<sup>2</sup>

6  
7 <sup>1</sup>Division of Research, Instituto Nacional de Geriatria. <sup>2</sup>MD/PhD (PECEM), Faculty of  
8 Medicine, National Autonomous University of Mexico.

9  
10 **Short title:** Asymptomatic SARS-CoV-2 in Mexico City

11  
12 **Corresponding author**

13 Omar Yaxmehen Bello-Chavolla. Division of Research. Instituto Nacional Geriatria. Anillo  
14 Perif. 2767, San Jerónimo Lídice, La Magdalena Contreras, 10200, Mexico City, Mexico.  
15 Phone: +52 (55) 5548486885. E-mail: [oyaxbell@yahoo.com.mx](mailto:oyaxbell@yahoo.com.mx)

16 **CONFLICT OF INTERESTS:** Nothing to disclose.

17 **FUNDING:** This research received no specific funding

18 **Word count:** 1,198 words; 2 Figures, 1 Table.

19 **ABSTRACT (295 WORDS)**

20 **IMPORTANCE:** Asymptomatic SARS-CoV-2 infections are potential sources for transmission;  
21 characterization of these cases has not been conducted in most low/middle income countries,  
22 including Mexico.

23 **OBJECTIVE:** To profile pre-symptomatic/asymptomatic SARS-CoV-2 infections in Mexico  
24 City, its associated comorbidities and outcomes.

25 **DESIGN:** Prospective observational study

26 **SETTING:** Subjects assessed by convenience sampling within the National Epidemiological  
27 Surveillance System in Mexico City.

28 **PARTICIPANTS:** Subjects with and without respiratory and non-respiratory symptoms (RS,  
29 NRS, respectively) assessed for SARS-CoV-2 using real time RT-PCR from nasopharyngeal  
30 swabs.

31 **OUTCOMES:** Severe COVID-19, intensive care unit admission, 30-day mortality and their  
32 outcomes in cases RS or NRS and asymptomatic cases.

33 **RESULTS:** Amongst 60121 cases with confirmed SARS-CoV-2 infection as of July 1<sup>st</sup>, 2020,  
34 we identified 5982 cases without RS (9.9%) and 2452 who were asymptomatic at first  
35 evaluation (4.1%). Compared to cases with RS, NRS and asymptomatic cases were younger  
36 and had lower rates of comorbidities. Cases with NRS had higher rates of severe COVID-19  
37 outcomes including hospitalization, ICU admission, and intubation ( $p < 0.001$ ). Mortality was  
38 higher for cases with NRS (HR 3.13, 95%CI 1.80-5.45) or RS (HR 7.58, 95%CI 4.56-12.58)  
39 compared to asymptomatic cases, adjusted for age, sex and comorbidities. Predictors for  
40 mortality in cases without RS included older age, previous exposure to suspected viral  
41 infection cases, comorbidities, presence of NRS and vomiting. For asymptomatic SARS-Co-  
42 V-2 infections, chronic kidney disease, previous exposure with suspected infection cases and  
43 older age were predictors for lethality.

44 **CONCLUSIONS AND RELEVANCE:** Definition of pre-symptomatic/asymptomatic cases has  
45 relevant implications for SARS-CoV-2 infection outcomes. Older age and comorbidity impact  
46 on the probability of developing severe complications for cases who were asymptomatic or  
47 had only NRS at evaluation and were sent for domiciliary treatment. Extending testing for  
48 detection of asymptomatic cases must be considered in Mexico to better understand the  
49 impact of the pandemic.

50

51 **Keywords:** SARS-CoV-2; Asymptomatic; Pre-symptomatic; Mexico; COVID-19 outcomes

52

### 53 **KEY POINTS**

54 **Question:** What are the profiles and outcomes of pre-symptomatic/asymptomatic cases of  
55 SARS-CoV-2 infection in Mexico City?

56 **Findings:** In this prospective observational study, we identified that cases with SARS-CoV-2  
57 infection who were asymptomatic/pre-symptomatic at initial evaluation were younger with low  
58 rates of comorbidities, had higher rates of previous viral exposure or were healthcare  
59 workers. Compared to asymptomatic cases at first evaluation, cases with non-respiratory  
60 symptoms had higher risk of severe COVID-19 outcomes. Predictors for mortality in non-  
61 respiratory or asymptomatic cases included non-respiratory symptoms, comorbidity and older  
62 age.

63 **Meaning:** Definition of pre-symptomatic/asymptomatic cases has relevant implications for  
64 outcomes related to SARS-CoV-2 infections.

65

## 66 **BACKGROUND**

67 Asymptomatic infections are a potential source of rapid SARS-CoV-2 spread [1]. Prevalence  
68 of pre-symptomatic/asymptomatic cases varies widely but might represent a larger proportion  
69 of cases than previously anticipated [2]. Controversies surrounding asymptomatic SARS-  
70 CoV-2 infections have focused on the distinction between pre-symptomatic and  
71 asymptomatic infection and its definitions, which have focused on respiratory symptoms (RS),  
72 primarily cough, dyspnea and fever. Nevertheless, longitudinal data shows that only a fraction  
73 of initially asymptomatic infections develop subsequent symptoms [3–5]. In Mexico, SARS-  
74 CoV-2 testing focuses on sampling high-risk cases, which allowed characterization of  
75 increased susceptibility for severe COVID-19 attributable to cardio-metabolic comorbidities  
76 [6]; however, no data has been reported on asymptomatic SARS-CoV-2 infections. Lack of  
77 information regarding pre-symptomatic/asymptomatic cases in Mexico is concerning,  
78 particularly since many studies suggest that contact tracing of asymptomatic infections will be  
79 pivotal to contain further SARS-CoV-2 spread [7]. Here, we profile pre-  
80 symptomatic/asymptomatic cases of SARS-CoV-2 infections to assess outcomes depending  
81 on its definitions using cases detected in Mexico City.

## 82 **METHODS**

83 We analyzed data from the National Epidemiological Surveillance System in Mexico City, an  
84 open-source dataset comprising daily updated cases tested using real-time RT-PCR to  
85 confirm SARS-CoV-2 using nasopharyngeal swabs according to the Berlin Protocol [8]. RS  
86 included fever, dyspnea, cough, polypnea or cyanosis at initial evaluation, whilst non-RS  
87 (NRS) included headache, myalgias, arthralgias, general malaise, abdominal pain, chest  
88 pain, conjunctivitis, irritability or vomiting. We defined cases with RS+NRS with  $\geq 1$  RS and  
89 any or none NRS. Cases with NRS had  $\geq 1$  NRS without RS, whilst asymptomatic cases had  
90 no symptoms. Pre-symptomatic cases were asymptomatic at admission but developed  
91 symptoms or required hospital admission after follow-up. To contrast definitions of pre-

92 symptomatic/asymptomatic cases based on RS, we combined asymptomatic and NRS cases  
93 and referred to them as cases without RS (WoRS). We confirmed these definitions using  
94 corresponding analyses; these results and available variables are detailed in **Supplementary**  
95 **Material**. Follow-up was conducted for all non-hospitalized cases up to 14 days; outcomes for  
96 all patients included hospital discharge due to clinical improvement or voluntary,  
97 ambulatory/treatment follow-up or death. NRS and asymptomatic cases were assessed  
98 outside the established framework for suspected COVID-19 cases in Mexico by convenience  
99 sampling and contact tracing. To evaluate predictors of RS+NRS and NRS we fitted a mixed  
100 effects logistic regression model, including facility of treatment as a random effect to account  
101 for the variability in case distribution and treatment across healthcare facilities. We calculated  
102 time-to-event for hospital admission and lethality for each group and modeled these  
103 outcomes using mixed-effects Cox Proportional Risk regression, including as a frailty penalty  
104 treatment facility. All statistical analyses were performed using R version 3.6.4.

## 105 **RESULTS**

### 106 *Profiling pre-symptomatic/asymptomatic cases with SARS-CoV-2 infection*

107 As of July 1<sup>st</sup>, 2020, 155722 subjects were tested for SARS-CoV-2. From 60121 cases with  
108 confirmed SARS-CoV-2 infection, 5982 cases were WoRS (9.9%). Amongst them, 3530 only  
109 had NRS (5.9%) and 2452 were pre-symptomatic/asymptomatic (4.1%). Cases WoRS and  
110 pre-symptomatic/asymptomatic were younger and had lower prevalence of NRS compared to  
111 cases with RS+NRS (**Figure 1**). Amongst cases WoRS (n=5982), 322 subjects were  
112 hospitalized (5.4%), 21 required mechanical ventilatory support (MVS) (0.4%), 36 required  
113 intensive care unit (ICU) admission (0.6%). Overall, 91 patients died (1.5%), of whom 25  
114 were ambulatory and 66 hospitalized. Predictors for hospital admission included vomiting,  
115 abdominal pain, conjunctivitis, rhinorrhea, cardiovascular disease, immunosuppression,  
116 diabetes, hypertension, previous exposure to suspected viral cases and healthcare workers.  
117 Independent predictors of mortality in WoRS included older age, diabetes, chronic obstructive

118 pulmonary disease (COPD), chronic kidney disease (CKD), previous exposure to suspected  
119 viral cases, any NRS and, particularly, vomiting (**Supplementary Material**). As of July 1<sup>st</sup>,  
120 4361 patients were still under domiciliary surveillance, 177 remained hospitalized, 78 were  
121 discharged after recovery, 1 had voluntary discharge and 1274 had completed domiciliary  
122 surveillance without developing RS.

123 Amongst asymptomatic patients at first assessment (n=2431), 99 were hospitalized (4.0%),  
124 three required MVS (0.1%) and 19 required ICU admission (0.8%). We recorded 15 deaths  
125 (0.5%) amongst whom six were ambulatory and nine were hospitalized (**Table 1**). Predictors  
126 for hospital admission included younger age, cardiovascular disease, immunosuppression  
127 and previous exposure to suspected viral cases, whilst predictors of lethality included age  
128 >60 years, previous exposure to suspected viral cases, and immunosuppression. Currently,  
129 1794 patients were still under domiciliary surveillance, 68 remained hospitalized, 22 were  
130 discharged after recovery, and 553 had completed follow-up without developing symptoms.

### 131 Predictors and outcomes for RS+NRS, NRS and asymptomatic cases

132 Presence of NRS was associated with younger age, healthcare workers, previous viral  
133 exposure, diabetes, obesity, female sex, hypertension and smoking, whilst RS+NRS were  
134 additionally associated with asthma and COPD, older age and male sex. Compared to pre-  
135 symptomatic/asymptomatic cases, risk of hospital admission was not significantly higher for  
136 NRS, but it was for RS+NRS (HR 2.71, 95%CI 2.23-3.31), adjusted for age, sex and  
137 comorbidities. NRS and RS+NRS had higher mortality compared to asymptomatic cases (log-  
138 rank  $p < 0.001$ , **Figure 2**); adjusting for age, sex and comorbidities, NRS (HR 3.13, 95%CI  
139 1.80-5.45) or RS+NRS cases (HR 7.58, 95%CI 4.56-12.58) retained higher mortality  
140 compared to asymptomatic cases.

## 141 **DISCUSSION**

142 Here, we present a comprehensive report of pre-symptomatic/asymptomatic COVID-19 cases  
143 in Mexico City. We show that the definition of asymptomatic SARS-CoV-2 infection should be

144 extended beyond RS to identify subjects at lowest risk of subsequent complications for  
145 domiciliary treatment who might contribute to further SARS-CoV-2 spread. We also report a  
146 low prevalence of pre-symptomatic cases amongst those who were initially classified as  
147 asymptomatic but eventually were hospitalized or had outcomes related to severe COVID-19  
148 [9]. This data confirms observations from other populations and highlights the relevance of  
149 identifying pre-symptomatic/asymptomatic cases, given conflicting evidence on viral shedding  
150 for pre-symptomatic/asymptomatic cases, and data suggesting evidence of subclinical lung  
151 abnormalities which must be assessed longitudinally to rule out long-term impacts of SARS-  
152 CoV-2 infection [10]. Notably, a consistent predictor of outcomes for NRS cases and pre-  
153 symptomatic/asymptomatic cases are previous exposure to suspected viral cases,  
154 highlighting the relevance of contact tracing.

155 Studies assessing natural history of asymptomatic SARS-CoV-2 infections highlighted the  
156 role of age and comorbidity in the subsequent development of symptoms, which is consistent  
157 with our observations [11]. Domiciliary surveillance in Mexico City focused on outcomes but  
158 not individual symptom onset, which might limit our ability to identify all pre-symptomatic  
159 cases. Regardless, only a small fraction of pre-symptomatic cases developed severe COVID-  
160 19 after being initially determined as asymptomatic, most of whom had underlying cardio-  
161 metabolic comorbidities or were susceptible for complications of COVID-19 attributable to  
162 unmasked cardiometabolic comorbidities. Asymptomatic SARS-CoV-2 infections have been  
163 postulated to elicit lower immune responses and diminished antibody production compared to  
164 symptomatic cases. Severe COVID-19 in pre-symptomatic cases might be attributable to a  
165 combination of decreased early immune response to SARS-CoV-2 infection and late  
166 enhanced pro-inflammatory responses in subjects with comorbidities [10,12].

167 Here, we assessed a thorough constellation of symptoms in one of the largest studies of pre-  
168 symptomatic/asymptomatic SARS-CoV-2 infections. Limitations include non-assessment of  
169 atypical SARS-CoV-2 symptoms which might occur amongst otherwise asymptomatic cases,

170 particularly in older adults [13], and the lack of systematized sampling, which does not allow  
171 for an accurate estimation of asymptomatic cases in Mexico City. Our results highlight the  
172 need to systematize definition of asymptomatic cases and extend testing by contact tracing to  
173 detect asymptomatic SARS-CoV-2 infections as one of the mitigations strategies to reduce  
174 transmission of SARS-CoV-2 in Mexico City [14].

175

## 176 **ACKNOWLEDGMENTS**

177 NEAV, JPBL, and AVV are enrolled at the PECEM program of the Faculty of Medicine at  
178 UNAM. JPBL and AVV are supported by CONACyT. The authors would like to acknowledge  
179 the invaluable work of all of Mexico's healthcare community in managing the COVID-19  
180 epidemic. Its participation in the COVID-19 surveillance program has made this work a reality,  
181 we are thankful for your effort.

## 182 **DATA AVAILABILITY**

183 All data sources and R code are available for reproducibility of results at  
184 [https://github.com/oyaxbell/covid\\_asymptomatic\\_cdmx](https://github.com/oyaxbell/covid_asymptomatic_cdmx).

## 185 **AUTHOR CONTRIBUTIONS**

186 Research idea and study design OYBC, NEAV, AVV, JPBL, CAFM, AMS; data acquisition:  
187 OYBC; data analysis/interpretation: OYBC, JPBL, NEAV, AVV, CAFM, AMS; statistical  
188 analysis: OYBC; manuscript drafting: OYBC, NEAV, AVV, JPBL, CAFM, AMS; supervision or  
189 mentorship: OYBC. Each author contributed important intellectual content during manuscript  
190 drafting or revision and accepts accountability for the overall work by ensuring that questions  
191 about the accuracy or integrity of any portion of the work are appropriately investigated and  
192 resolved.

193 **FUNDING:** No funding was received.

194 **CONFLICT OF INTEREST/FINANCIAL DISCLOSURE:** Nothing to disclose.

195



196 **REFERENCES**

- 197 1. Buitrago-Garcia DC, Egli-Gany D, Counotte MJ, Hossmann S, Imeri H, Salanti G, et al.  
198 The role of asymptomatic SARS-CoV-2 infections: rapid living systematic review and  
199 meta-analysis. medRxiv. 2020; doi:10.1101/2020.04.25.20079103
- 200 2. Oran DP, Topol EJ. Prevalence of Asymptomatic SARS-CoV-2 Infection: A Narrative  
201 Review. *Ann Intern Med*. 2020; doi:10.7326/M20-3012
- 202 3. Arons MM, Hatfield KM, Reddy SC, Kimball A, James A, Jacobs JR, et al.  
203 Presymptomatic SARS-CoV-2 Infections and Transmission in a Skilled Nursing Facility.  
204 *N Engl J Med*. 2020;382: 2081–2090. doi:10.1056/NEJMoa2008457
- 205 4. Sakurai A, Sasaki T, Kato S, Hayashi M, Tsuzuki S-I, Ishihara T, et al. Natural History of  
206 Asymptomatic SARS-CoV-2 Infection. *N Engl J Med*. 2020;  
207 doi:10.1056/NEJMc2013020
- 208 5. Imperial College COVID-19 Response Team, Lavezzo E, Franchin E, Ciavarella C,  
209 Cuomo-Dannenburg G, Barzon L, et al. Suppression of a SARS-CoV-2 outbreak in the  
210 Italian municipality of Vo. *Nature*. 2020; doi:10.1038/s41586-020-2488-1
- 211 6. Bello-Chavolla OY, Bahena-López JP, Antonio-Villa NE, Vargas-Vázquez A, González-  
212 Díaz A, Márquez-Salinas A, et al. Predicting mortality due to SARS-CoV-2: A  
213 mechanistic score relating obesity and diabetes to COVID-19 outcomes in Mexico. *J*  
214 *Clin Endocrinol Metab*. 2020; doi:10.1210/clinem/dgaa346
- 215 7. Huff HV, Singh A. Asymptomatic transmission during the COVID-19 pandemic and  
216 implications for public health strategies. *Clin Infect Dis*. 2020; doi:10.1093/cid/ciaa654
- 217 8. Covid-19 SINAVE Ciudad de México — Datos CDMX [Internet]. [cited 28 Jun 2020].  
218 Available: <https://datos.cdmx.gob.mx/explore/dataset/base-covid-sinave/table/>
- 219 9. Meng H, Xiong R, He R, Lin W, Hao B, Zhang L, et al. CT imaging and clinical course of  
220 asymptomatic cases with COVID-19 pneumonia at admission in Wuhan, China. *J Infect*.  
221 2020;81: e33–e39. doi:10.1016/j.jinf.2020.04.004

- 222 10. Long Q-X, Tang X-J, Shi Q-L, Li Q, Deng H-J, Yuan J, et al. Clinical and immunological  
223 assessment of asymptomatic SARS-CoV-2 infections. *Nat Med.* 2020;  
224 doi:10.1038/s41591-020-0965-6
- 225 11. [2006.08471] Probability of symptoms and critical disease after SARS-CoV-2 infection  
226 [Internet]. [cited 28 Jun 2020]. Available: <https://arxiv.org/abs/2006.08471>
- 227 12. Azkur AK, Akdis M, Azkur D, Sokolowska M, van de Veen W, Brügggen M-C, et al.  
228 Immune response to SARS-CoV-2 and mechanisms of immunopathological changes in  
229 COVID-19. *Allergy.* 2020; doi:10.1111/all.14364
- 230 13. Varatharaj A, Thomas N, Ellul MA, Davies NWS, Pollak TA, Tenorio EL, et al.  
231 Neurological and neuropsychiatric complications of COVID-19 in 153 patients: a UK-  
232 wide surveillance study. *The Lancet Psychiatry.* 2020; doi:10.1016/S2215-  
233 0366(20)30287-X
- 234 14. Gandhi M, Yokoe DS, Havlir DV. Asymptomatic Transmission, the Achilles' Heel of  
235 Current Strategies to Control Covid-19. *N Engl J Med.* 2020;382: 2158–2160.  
236 doi:10.1056/NEJMe2009758  
237

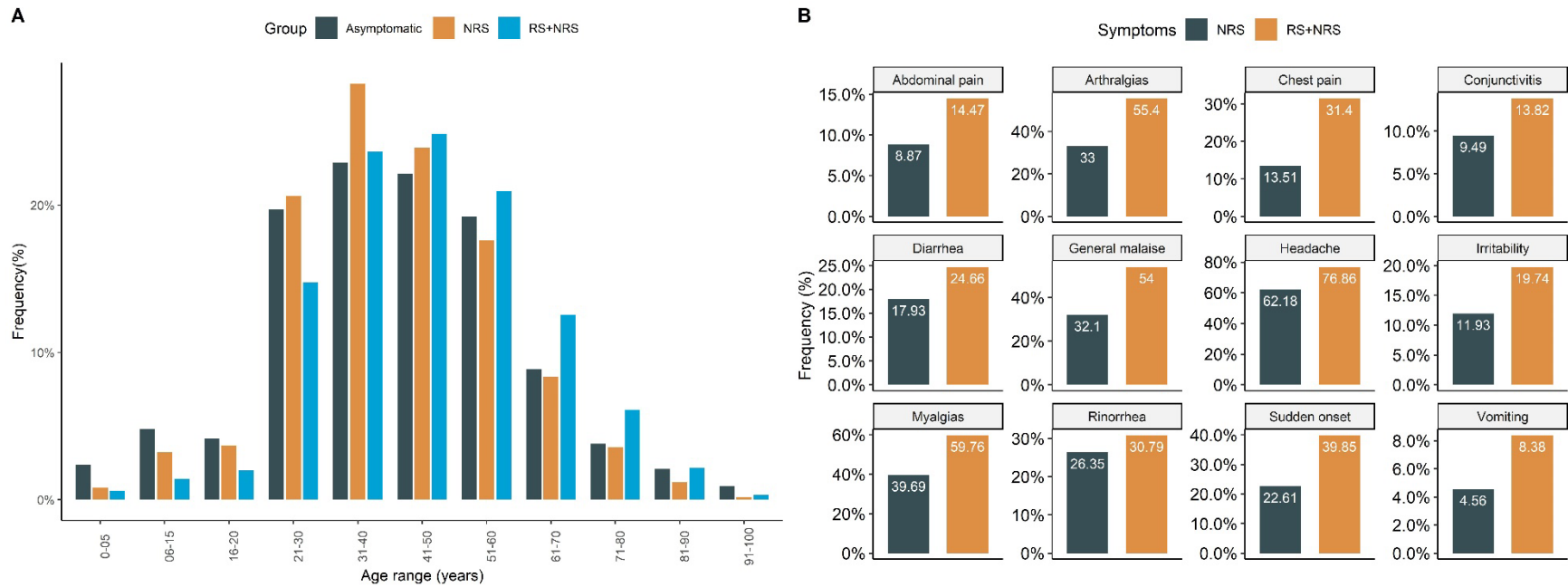
238 **Table 1.** Descriptive characteristics of symptomatic and asymptomatic SARS-CoV-2 cases in Mexico City. *Abbreviations:* COPD:  
 239 Chronic obstructive pulmonary disease; HIV/AIDS: Human immunodeficiency virus and/or acquired immunodeficiency  
 240 syndrome; CKD: Chronic kidney disease, CDV: Cardiovascular disease; HCW: Healthcare worker

Parameter	RS+NRS (n=54139)	NRS (n=3530)	Pre-asymptomatic Asymptomatic (n=2452)	P-value
Male sex (%)	29483 (53.3)	1527 (53.3)	1306 (43.3)	<0.001
Age (years)	46.29±16.21	41.62±15.77	41.93±18.13	<0.001
Mortality (%)	6736 (12.4)	76 (2.2)	15 (0.6)	<0.001
Hospitalizacion (%)	15896 (29.4)	223 (6.3)	99 (4.0)	<0.001
ICU admission (%)	1368 (2.5)	17 (0.5)	19 (0.8)	<0.001
Mechanical-Ventilation (%)	2132 (3.9)	18 (0.5)	3 (0.1)	<0.001
Previous viral exposure (%)	20591 (38.0)	1936 (54.8)	1435 (58.5)	<0.001
Diabetes (%)	8467 (15.6)	331 (9.4)	138 (5.6)	<0.001
COPD (%)	898 (1.7)	23 (0.7)	15 (0.6)	<0.001

Asthma (%)	1309 (2.4)	70 (2.0)	33 (1.3)	<0.001
HIV/AIDS (%)	251 (0.5)	13 (0.4)	3 (0.1)	0.036
Obesity (%)	11083 (20.5)	538 (15.2)	201 (8.2)	<0.001
Smoking status (%)	5737 (10.6)	395 (11.2)	166 (6.77)	<0.001
CVD (%)	1336 (2.5)	58 (1.6)	30 (1.2)	<0.001
Hypertension (%)	10133 (18.7)	422 (12.0)	182 (7.4)	<0.001
Immunosuppression (%)	885 (1.6)	39 (1.1)	31 (1.3)	0.022
CKD (%)	1077 (2.0)	38 (1.1)	16 (0.7)	<0.001
Healthcare worker (%)	9733 (18.0)	849 (24.1)	343 (14.0)	<0.001

---

241 **FIGURE LEGENDS**



242

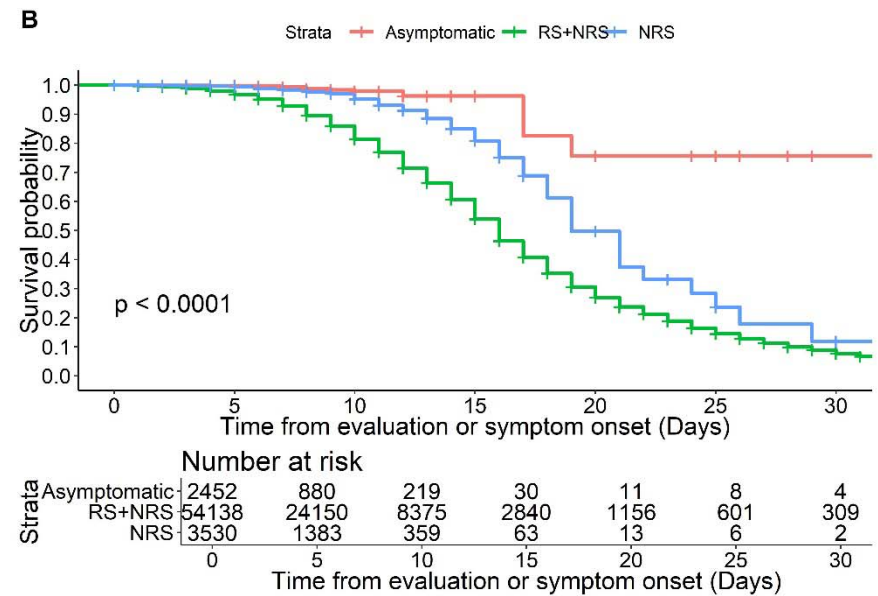
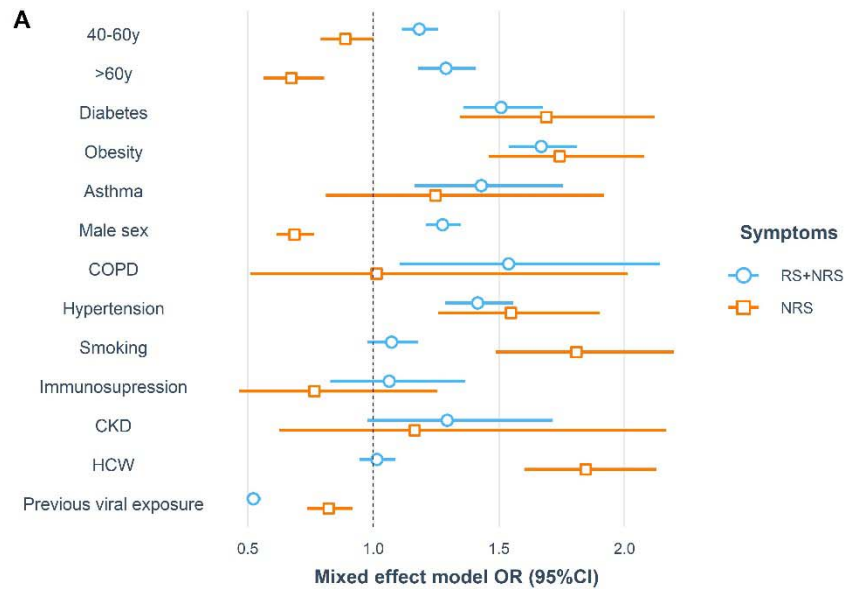
243 **FIGURE 1.** Histogram comparing case distribution according to age groups comparing cases with RS+NRS, NRS and asymptomatic  
 244 SARS-CoV-2 infection, demonstrating the role of age in determining asymptomatic SARS-CoV-2 infections (A). We also show a  
 245 comparison of the distribution of NRS related to SARS-CoV-2 infections in subjects with RS+NRS and NRS only.

246 Abbreviations: RS: Respiratory symptoms; NRS: Non-respiratory Symptoms; Sudden onset: Patient report of sudden onset of  
 247 symptomatology.

248

249

250



251

252 **FIGURE 2.** Factors associated with presence of RS+NRS compared to WoRS (NRS + Asymptomatic), and NRS compared to  
 253 asymptomatic cases (NRS) with SARS-CoV-2 infection (A). We also show the and comparison of 30-day mortality rates between  
 254 RS+NRS cases, NRS and asymptomatic SARS-CoV-2 infections in Mexico City.

255 Abbreviations: RS: Respiratory symptoms; NRS: Non-respiratory Symptoms; COPD: Chronic obstructive pulmonary disease; CKD:  
 256 Chronic kidney disease; HCW: Health-care workers; Previous viral exposure: Prior contact with a patient with suspected viral  
 257 infection.

258