

---

# COMPARISON OF MULTIMORBIDITY IN COVID-19 INFECTED AND GENERAL POPULATION IN PORTUGAL

---

A PREPRINT

**Miguel Froes INESC-ID**  
Instituto Superior Técnico  
Universidade de Lisboa  
Lisboa, Portugal  
[miguel.froes@tecnico.ulisboa.pt](mailto:miguel.froes@tecnico.ulisboa.pt)

**Bernardo Neves**  
Departamento de Medicina Interna  
Hospital da Luz  
Lisboa, Portugal

**Bruno Martins**  
INESC-ID  
Instituto Superior Técnico  
Universidade de Lisboa  
Lisboa, Portugal

**Mário J. Silva**  
INESC-ID  
Instituto Superior Técnico  
Universidade de Lisboa  
Lisboa, Portugal

July 1, 2020

## ABSTRACT

Understanding COVID-19 and its risk factors in the Portuguese population is critical to combat this condition. To study the impact of multimorbidity in the population with COVID-19 infection, we performed a descriptive analysis of a dataset extracted from all reported confirmed cases of COVID-19 in Portugal until April 28, 2020. We observed a prevalence of multimorbidity in 4.49% of the 19,598 infected patients. Patients showed an increased risk of hospitalization, ICU admission and mortality with OR 2.70 (CI 95%: 2.52-2.88) for every additional morbidity. Further studies should confirm these findings and special attention should be made on data collection to ensure proper recording of patient comorbidities.

**Keywords** Multimorbidity · COVID-19 · Chronic health conditions · Portugal · National Health Survey

## 1 Introduction

COVID-19 is an infectious disease caused by SARS-CoV-2 that started challenging health systems in recent months. Its impact is global with 8,708,008 cases and 461,715 deaths by June 21, 2020 [1]. Early evidence from this pandemic suggested that older patients with chronic conditions were over-represented and may herald a poor clinical course. However, data is still largely limited to China and Italy [2, 3]. Given that multimorbidity increases with age, the specific risk of different chronic conditions and their combination in terms of poor health outcomes needs to be adjusted for age, which is not routinely done [4]. Understanding which groups are at higher risk is important to better inform public health policies, resource allocation and advance knowledge about this novel condition.

DGS (Directionate-General of Health), the Portuguese public health authority, developed and operates SINAVE (National Epidemiological Surveillance System), the national public health surveillance system, to collect, update, analyze, and disclose data related to mandatory reporting infectious diseases and other public health hazards [5]. Symptoms, previous medical history, disease course and laboratory results are introduced by physicians in charge of COVID-19 patients. Although this platform was not specifically designed for this outbreak, it has been used since the beginning of the pandemic as the main official source of data about COVID-19 cases in Portugal.

---

<sup>0</sup> **Abbreviations:** SINAVE, Sistema Nacional de Vigilância Epidemiológica; COVID-19, Coronavirus disease 2019; SARS-CoV-2, severe acute respiratory syndrome coronavirus 2, multimorbidity, chronic conditions

In this work, we evaluate the prevalence of multimorbidity and age-adjusted risk of hospitalization, ICU admission and death in the Portuguese population from official data, based on a dataset extracted from SINAVE containing all confirmed cases of COVID-19 in Portugal by April 28, 2020.

## 2 Methods

### 2.1 Sample

This retrospective observational study used data provided by DGS after the required institutional and ethical approvals. The sample population consists of all the Portuguese population with SARS-CoV2 confirmed infection as notified by clinicians by April 28, 2020. A broad range of clinical and demographic variables are present in this dataset. In this study we specifically used age, gender, hospital admission, admission in intensive care unit, mortality and patient's underlying conditions.

### 2.2 Measures

Chronic conditions were provided as a categorical variable on the presence or absence of the following conditions: asthma, malignancy, cardiac disorder (including hypertension), chronic hematological disorder, diabetes, HIV/other immune deficiency, renal disease, liver disease, chronic lung disease, and neuromuscular disorder. We defined multimorbidity as the presence of two or more conditions in the same individual, following the definition used by other authors [6]. Addressed outcomes were hospitalization, admission to ICU unit and reported death. A composite outcome of any of these events was also analyzed.

### 2.3 Statistical analysis

We used *Python 3.6* and packages *Numpy*, *Pandas*, *Seaborn*, and *SciPy* in combination with *Microsoft Excel* to evaluate and plot the prevalence of multimorbidity. Additionally, *IBM SPSS Statistics* was used for obtaining age-adjusted risk of hospitalisation, ICU admission and death.

Categorical variables were presented as counts and percentages with 95% confidence intervals and comparisons were made using the  $\chi^2$  test. Univariate regression analysis of each individual chronic condition was performed adjusting only for age. A multivariate logistic regression was performed adjusting for age and every other chronic condition with significant statistical association on univariate analysis. Results were considered significant when  $P < 0,05$ .

## 3 Results

The overall sample contained 19,598 patient cases, women being more prevalent (58.92%). Among the cases, 16.39% had at least one chronic condition. Diabetes was the most commonly reported condition, reported in 35.59% of the patients with any morbidity. Table 1 shows the reported prevalence of different chronic conditions in the studied population. Multimorbidity, as previously defined, was present in 4.49% of the cases. Figure 1 and Figure 2 plot the prevalence of multimorbidity by age group for the COVID-19 infected general population and hospitalized population, respectively. The prevalence of co-occurring pairs of chronic health conditions, plotted in Figure 4, shows Diabetes and Neuromuscular disorders as the most common dyad of chronic diseases.

Hospitalization occurred in 14.97% of patients, with a male predominance (52.45%). ICU admission was required for 1.33% of patients. Data regarding survival was available for 19,575 patients (99.88% of study population) and observed mortality at the end of data collection was 2.56%. Age, cancer, cardiac disease, renal disease, lung disease and neuromuscular disorders were all associated with increased mortality (Table 6). All chronic conditions except for asthma were associated with increased risk of hospitalisation (Table 7). Age, cardiac disorders, diabetes, HIV, renal disease and lung diseases were associated with an increased risk of ICU admission (Table 8). Every additional chronic condition increases the risk of the composite outcome of death, hospitalisation or ICU admission by 169.5% (OR 2.70; CI 95%: 2.52-2.88).

## 4 Discussion

This study shows that multimorbidity is significantly associated with adverse outcomes in COVID-19 infection in the Portuguese population, independently from age. All chronic conditions, except asthma, lead to increased risk

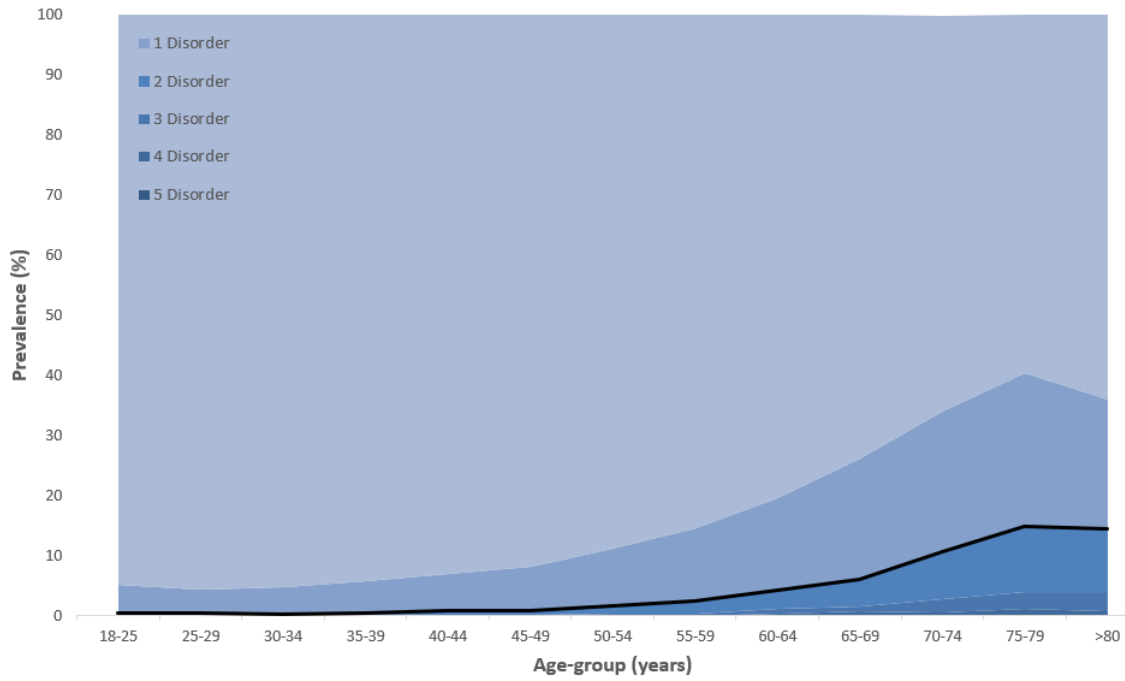


Figure 1: Prevalence of multimorbidity by age group for the COVID-19 infected population. The lighter shade of blue is representative of the absence of conditions and the black line represents the prevalence of multimorbidity.

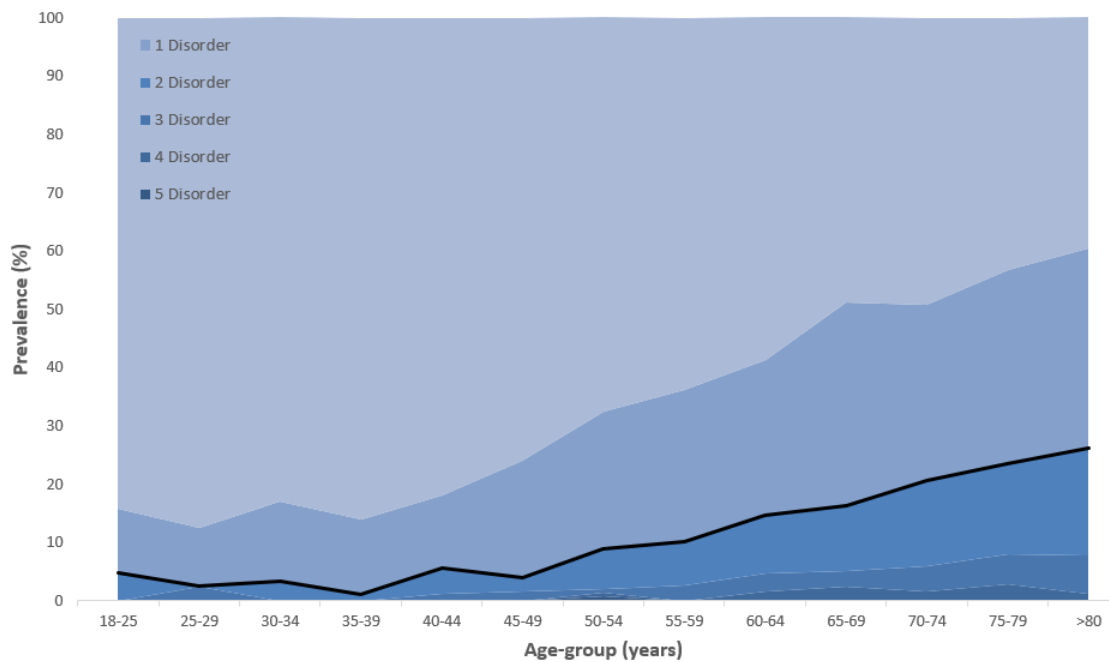


Figure 2: Prevalence of multimorbidity by age group for the COVID-19 infected hospitalized population. The lighter shade of blue is representative of the absence of conditions and the black line represents the prevalence of multimorbidity.

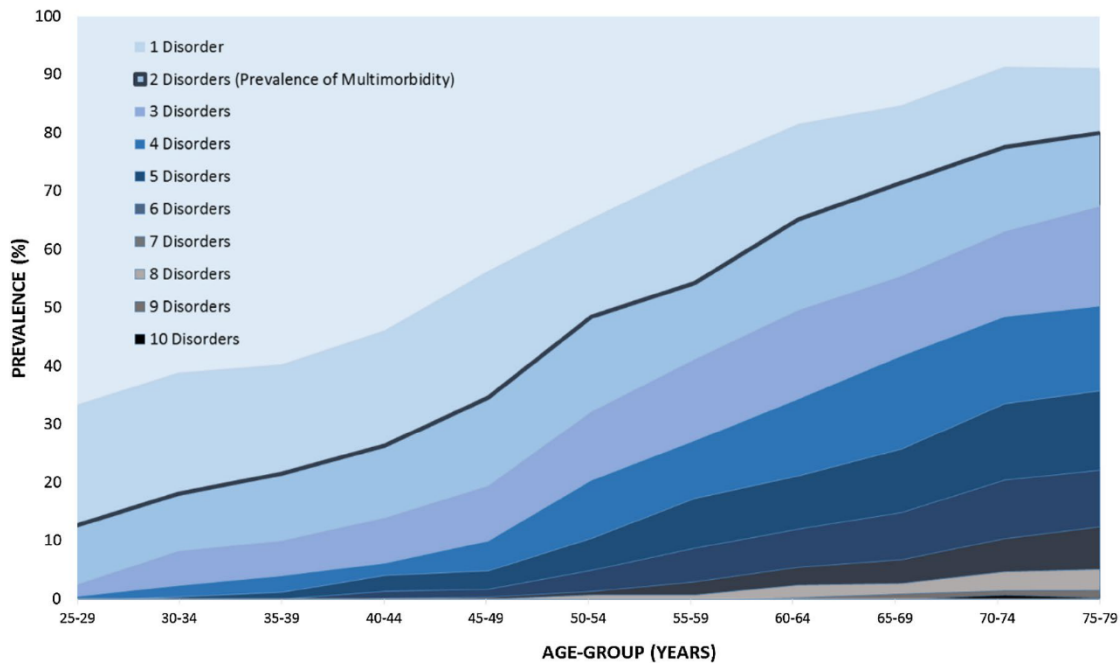


Figure 3: Prevalence of multimorbidity by age group (Laires et al 2019). The lighter shade of blue is representative of the absence of conditions and the black line represents the prevalence of multimorbidity.

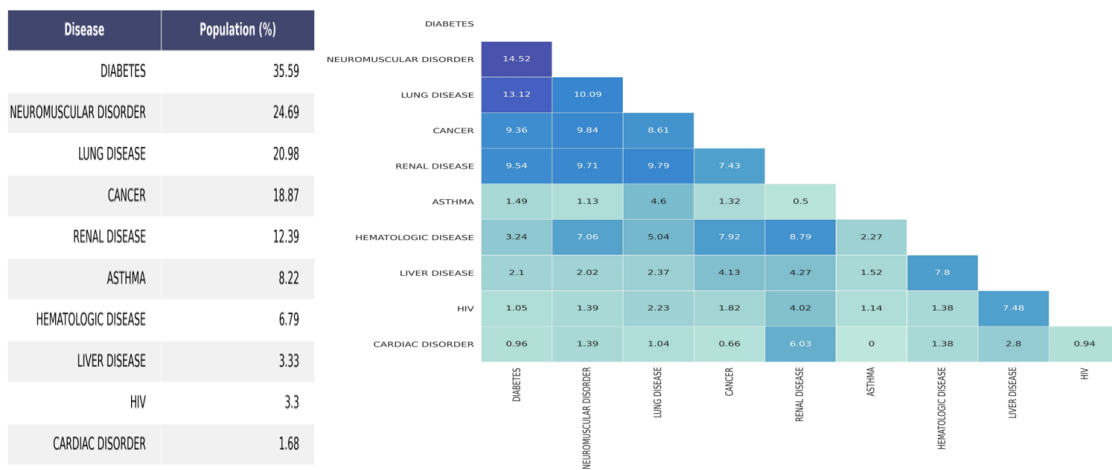


Figure 4: Prevalence of single (left) and co-occurring pairs (right) of chronic health conditions. Left: Prevalence of the disease in the population with at least one disease. Right: Prevalence of the disease, rows, in the population affected by another disease, columns. All values are presented in percentage.

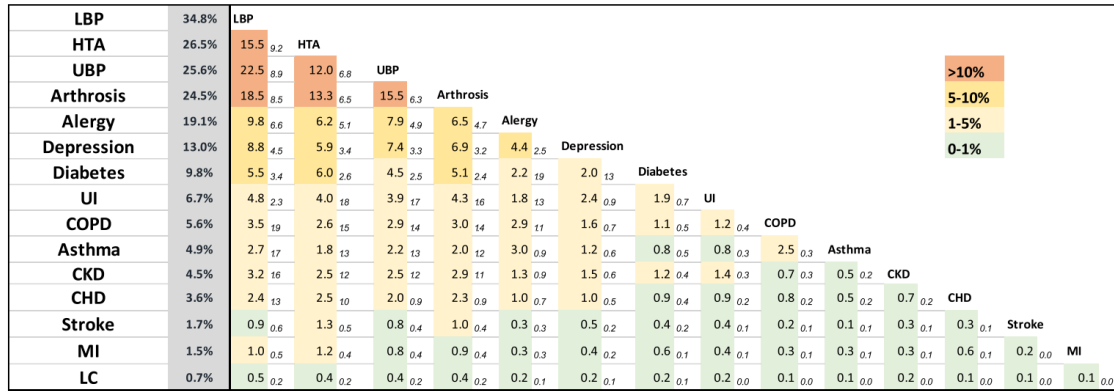


Figure 5: Relationship between the observed and expected prevalence of co-occurring pairs of chronic health conditions. All results are given in percentages. The shaded bar depicts the prevalence of each chronic health condition. In the matrix, the first value for each pair is the observed frequency, while the second (italic) is the expected one after multiplying the respective prevalence of each disorder. Chi-square tests were used to determine whether observed frequencies were significantly different from expected frequencies. All p-values were inferior to 5%. LBP low back pain, HTA hypertension, UBP upper back pain, UI urinary incontinence, COPD chronic obstructive pulmonary disease, CKD chronic kidney disease, CHD coronary heart disease, MI previous myocardial infarction, and LC liver cirrhosis

of hospitalization. However, only cardiac conditions, diabetes, HIV, chronic kidney disease, and chronic respiratory diseases are associated with more severe cases requiring ICU admission. These results are in line with previous reports where chronic diseases are associated with poorer outcomes [3, 7]. Although the strength of association differs between diseases, every additional morbidity leads to an increased risk of the composite outcome of hospitalization, ICU admission and mortality.

Multimorbidity was previously studied in the general Portuguese population in 2014 by Laires et al., using data from the fifth National Health Interview Survey (Inquérito Nacional de Saúde, INS) [6]. Prevalence of multimorbidity on the Laires et al. study can be compared with our data. Although only individuals aged 25-79 were included in that study, this constitutes a robust sample for morbidity prevalence in Portugal. We can observe in Figure 1 to Figure 3 a rise in chronic health conditions with increasing age as expected. However, multimorbidity is much less prevalent in our study population (4.49% vs 43.9%). Since the beginning of this pandemic there has been significant public awareness regarding the higher risk of older people with comorbidities. This may have induced efforts to protect and isolate this population. The findings of this study could thus confirm the positive effect of such measures, given the younger and healthier population in the COVID-19 dataset. The discrepancy may however be related to different reporting methods. For instance, the maximum number of reported simultaneous morbidities in the COVID-19 infected population was only 5 disorders, which is half of the maximum number of morbidities found in the INS population (10 disorders). Since the total number of conditions between both datasets is not so different (COVID-19: 10 diseases; INS: 13 diseases), a possible explanation for the higher number of co-occurring conditions in the INS population can be the combination of self-diagnoses with the presence of more "subjective" disorders such as: lower and upper back pain, allergies, depression, and urinary incontinence.

This study has several limitations. First of all, the cross-sectional nature of the COVID-19 dataset makes it impossible to account for incomplete outcomes, since several patients could ultimately be hospitalized or die after the end of observation. Reported data on outcomes may therefore be underestimated, so careful interpretation is advised until more data is available. More importantly, despite the fact that no standard set of conditions is established to define multimorbidity, chronic conditions were given on broad groups and there is no specific information on individual conditions. For example, diabetes is given as one group and no distinction is made between type 1 and type 2 diabetes. Therefore, measured morbidities may herald heterogeneous groups of diseases with different degrees of severity, which may influence outcomes. Future datasets should include more accurate information on chronic conditions

Another important concern is related to the risk of under-reporting in this dataset, which becomes obvious by analyzing reported cardiac diseases. Given that cardiovascular diseases, particularly hypertension, are very prevalent in the Portuguese population [8], the observed prevalence of 0.28% in our study highly suggests that under-reporting may have occurred. We could notice that, surprisingly, cardiovascular diseases are absent from the available list of previous conditions in SINAVE's reporting page, as seen in Figure 6b, which could have contributed to a lower notification of this comorbidity.

Figure 6 consists of two screenshots, (a) and (b), of the SINAVE web interface. Screenshot (a) shows the 'Sinais de pneumonia na autópsia' section with a dropdown menu open for 'O doente apresenta comorbilidades', where 'Sim' is selected. Screenshot (b) shows the 'Internamento' section with a dropdown menu open for 'O doente apresenta comorbilidades', where 'Sim' is selected, and a list of comorbidities is displayed, including 'Neoplasia', 'Diabetes', 'VIH/outras imunodeficiências', 'Doença neurológica ou neuromuscular crónica', 'Asma', 'Doença pulmonar crónica', 'Patologia hepática', 'Doenças hematológicas crónicas', 'Doença renal crónica', and 'Deficiência neurológica crónica'.

Figure 6: Screenshots of SINAVE's interface regarding the report of known comorbidities: (a) Reporting the presence of comorbidities; (b) Reporting the known comorbidities

Although we acknowledge that this dataset was not primarily designed for research, but rather for public health proceedings and government information, we believe that a better user interface design and a more rational set of chronic conditions could effortlessly improve the quality of recorded data. One important lesson we can learn from this pandemic is the important contribution that quickly gathered relevant clinical data and health information systems, such as SINAVE, can have in this setting.

Overall, we consider SINAVE to be very susceptible to under-reporting, specially regarding multimorbidity. This is due to a confusing and non-practical interface that allows doctors to skip filling some important fields in the entry form. Some suggestions to improve future studies regarding multimorbidity, using SINAVE's data, are:

- Redesign the reporting form, making data entry more effective and faster. The current user interface could be simplified, while encouraging the input of relevant comorbidity information;
- Integrate SINAVE data with the patient's health record or with data from the new *Trace Covid-19* system, to provide richer data relevant to COVID-19. This could be a way of implementing the redesigned user interface suggested above;
- Make it mandatory to input if comorbidities are absent; if present, the filling of the entry form inputs related to comorbidities and the specific chronic conditions should be mandatory. As seen in Figure 6, the list of comorbidities only becomes visible if a previous parameter is filled;
- Make the entry of all known chronic conditions by healthcare professionals more persuasive;
- Add cardiovascular diseases to the list of comorbidities.

To conclude, findings in our study show that multimorbidity is significantly associated with poor outcomes in COVID-19 infection. Further data is needed to inform about the strength of this association and about the significance of observed differences in multimorbidity prevalence between infected patients and the general population of Portugal. We believe that data collection problems may have occurred and influenced outcome measurement. We also provide recommendations for improving the data collection user interface that could improve quality of health information about the COVID-19 infected population, while increasing confidence in SINAVE data.

## References

- [1] WHO. World health organization. novel coronavirus (2019-ncov) situation reports.
- [2] Nanshan Chen, Min Zhou, Xuan Dong, Jieming Qu, Fengyun Gong, Yang Han, Yang Qiu, Jingli Wang, Ying Liu, Yuan Wei, Jia'an Xia, Ting Yu, Xinxin Zhang, and Li Zhang. Epidemiological and clinical characteristics of 99 cases of 2019 novel coronavirus pneumonia in Wuhan, China: a descriptive study. *Lancet (London, England)*, 395(10223):507–513, 2020.
- [3] Giacomo Grasselli, Alberto Zangrillo, Alberto Zanella, Massimo Antonelli, Luca Cabrini, Antonio Castelli, Danilo Cereda, Antonio Coluccello, Giuseppe Foti, Roberto Fumagalli, Giorgio Iotti, Nicola Latronico, Luca Lorini, Stefano Merler, Giuseppe Natalini, Alessandra Piatti, Marco Vito Ranieri, Anna Mara Scandroglio, Enrico Storti, Maurizio Cecconi, Antonio Pesenti, and COVID-19 Lombardy ICU Network. Baseline Characteristics and Outcomes of 1591 Patients Infected With SARS-CoV-2 Admitted to ICUs of the Lombardy Region, Italy. *JAMA*, 323(16):1574, 2020.
- [4] Kate E Mason, Philip McHale, Andy Pennington, Gillian Maudsley, Jennifer Day, and Ben Barr. Age-adjusted associations between comorbidity and outcomes of COVID-19: a review of the evidence. *medRxiv*, page 2020.05.06.20093351, 2020.
- [5] DGS. <https://www.dgs.pt/servicos-on-line1/sinave-sistema-nacional-de-vigilancia-epidemiologica.aspx>.
- [6] P. A. Laires and J. Perelman. The current and projected burden of multimorbidity: a cross-sectional study in a Southern Europe population. *European Journal of Ageing*, 16(2):181–192, 2019.
- [7] Christopher M Petrilli, Simon A Jones, Jie Yang, Harish Rajagopalan, Luke O'Donnell, Yelena Chernyak, Katie A Tobin, Robert J Cerfolio, Fritz Francois, and Leora I Horwitz. Factors associated with hospital admission and critical illness among 5279 people with coronavirus disease 2019 in New York City: prospective cohort study. *BMJ*, 369:m1966, 2020.
- [8] Jorge Polonia, Luis Martins, Fernando Pinto, and Jose Nazare. Prevalence, awareness, treatment and control of hypertension and salt intake in Portugal: changes over a decade. The PHYSA study. *Journal of Hypertension*, 32(6):1211–1221, 2014.

## List of Tables

1	Percentage of total population affected by comorbidity. . . . .	10
2	Odds Ratio for the outcome (Death) for the Age variable and analyzed comorbidities. The real value of Age was used instead of an age group. Being a continuous variable, an Odds Ratio of 1.092 implies that, as the Age variable increases by 1, the probability of the patient having the outcome increases by 9.2%. <b>B</b> , <b>S.E</b> , and <b>Wald</b> are the unstandardized regression weight, how much the unstandardized regression weight can vary by, and test statistic for the individual predictor variable, respectively. . . .	11
3	Odds Ratio for the outcome (Hospitalization) for the Age variable and comorbidities analyzed. The real value of Age was used instead of an age group. Being a continuous variable, an Odds Ratio of 1.056 implies that, as the Age variable increases by 1, the probability of the patient having the outcome increases by 5.6%. <b>B</b> , <b>S.E</b> , and <b>Wald</b> are the unstandardized regression weight, how much the unstandardized regression weight can vary by, and test statistic for the individual predictor variable, respectively. . . . .	12
4	Odds Ratio for the outcome (ICU stay) for the Age variable and comorbidities analyzed. The real value of Age was used instead of an age group. Being a continuous variable, an Odds Ratio of 1.037 implies that, as the Age variable increases by 1, the probability of the patient having the outcome increases by 3.7%. <b>B</b> , <b>S.E</b> , and <b>Wald</b> are the unstandardized regression weight, how much the unstandardized regression weight can vary by, and test statistic for the individual predictor variable, respectively. . . .	13
5	Odds Ratio for the outcome (Death + hospitalisation + ICU stay) for the Age variable and comorbidities analyzed. The real value of Age was used instead of an age group. Being a continuous variable, an Odds Ratio of 1.055 implies that, as the Age variable increases by 1, the probability of the patient having the outcome increases by 5.5%. <b>B</b> , <b>S.E</b> , and <b>Wald</b> are the unstandardized regression weight, how much the unstandardized regression weight can vary by, and test statistic for the individual predictor variable, respectively. . . . .	14
6	Odds Ratio for the association between the age, categories of comorbidity and outcome (Death) in patients with Covid-19. The continuous value of Age was used instead of an age group. Being a continuous variable, an Odds Ratio of 1.084 implies that, as the Age variable increases by 1, the probability of the patient having the outcome increases by 8.4%. <b>B</b> , <b>S.E</b> , and <b>Wald</b> are the unstandardized regression weight, how much the unstandardized regression weight can vary by, and test statistic for the individual predictor variable, respectively. . . . .	15
7	Odds Ratio for the association between the age, categories of comorbidity and outcome (Hospitalization) in patients with Covid-19. The continuous value of Age was used instead of an age group. Being a continuous variable, an Odds Ratio of 1.045 implies that, as the Age variable increases by 1, the probability of the patient having the outcome increases by 4.5%. <b>B</b> , <b>S.E</b> , and <b>Wald</b> are the unstandardized regression weight, how much the unstandardized regression weight can vary by, and test statistic for the individual predictor variable, respectively. . . . .	16
8	Odds Ratio for the association between the age, categories of comorbidity and outcome (ICU stay) in patients with Covid-19. The continuous value of Age was used instead of an age group. Being a continuous variable, an Odds Ratio of 1.029 implies that, as the Age variable increases by 1, the probability of the patient having the outcome increases by 2.9%. <b>B</b> , <b>S.E</b> , and <b>Wald</b> are the unstandardized regression weight, how much the unstandardized regression weight can vary by, and test statistic for the individual predictor variable, respectively. . . . .	17
9	Odds Ratio for the association between the age, categories of comorbidity and outcome (Death + Hospitalization + ICU stay) in patients with Covid-19. The continuous value of Age was used instead of an age group. Being a continuous variable, an Odds Ratio of 1.045 implies that, as the Age variable increases by 1, the probability of the patient having the outcome increases by 4.5%. <b>B</b> , <b>S.E</b> , and <b>Wald</b> are the unstandardized regression weight, how much the unstandardized regression weight can vary by, and test statistic for the individual predictor variable, respectively. . . . .	18



- 10 Odds Ratio for the association between the age, number of comorbidities and outcome (Death + Hospitalization + ICU stay) in patients with Covid-19. Both Age and N<sup>o</sup> of comorbidities are continuous variables, i.e, an Odds Ratio of 2.695 implies that, as the N<sup>o</sup> of comorbidities increases by 1, the probability of the patient having the outcome increases by 169.5%. **B**, **S.E**, and **Wald** are the unstandardized regression weight, how much the unstandardized regression weight can vary by, and test statistic for the individual predictor variable, respectively. . . . . 19

Table 1: Percentage of total population affected by comorbidity.

	<b>Asthma</b>	<b>Cancer</b>	<b>Cardiac Disorder</b>	<b>Diabetes</b>	<b>Hematological Disorder</b>	<b>HIV</b>	<b>Renal Disease</b>	<b>Liver Disease</b>	<b>Lung Disease</b>	<b>Neuromuscular Disorder</b>
<b>Population (%)</b>	1.35	3.09	0.28	5.83	1.11	0.54	2.03	0.55	3.44	4.05

Table 2: Odds Ratio for the outcome (Death) for the Age variable and analyzed comorbidities. The real value of Age was used instead of an age group. Being a continuous variable, an Odds Ratio of 1.092 implies that, as the Age variable increases by 1, the probability of the patient having the outcome increases by 9.2%. **B**, **S.E**, and **Wald** are the unstandardized regression weight, how much the unstandardized regression weight can vary by, and test statistic for the individual predictor variable, respectively.

	<b>B</b>	<b>S.E</b>	<b>Wald</b>	<b>df</b>	<b>p-value</b>	<b>Odds Ratio</b>	<b>95% C.I</b>	
							<b>Lower</b>	<b>Upper</b>
<b>Age</b>	,088	,003	649,301	1	<0,001	1,092	1,085	1,099
<b>Asthma</b>	-,836	,582	2,062	1	,151	,433	,138	1,357
<b>Cancer</b>	1,245	,159	61,144	1	<0,001	3,472	2,542	4,744
<b>Cardiac Disorder</b>	4,505	,595	57,385	1	<0,001	90,503	28,211	290,343
<b>Diabetes</b>	1,215	,124	95,611	1	<0,001	3,370	2,641	4,299
<b>Hematologic Disease</b>	1,818	,205	78,741	1	<0,001	6,159	4,122	9,202
<b>HIV</b>	,831	,423	3,862	1	,049	2,295	1,002	5,256
<b>Renal Disease</b>	2,720	,127	460,484	1	<0,001	15,179	11,840	19,460
<b>Liver Disease</b>	,987	,394	6,287	1	,012	2,683	1,240	5,803
<b>Lung Disease</b>	1,410	,144	96,390	1	<0,001	4,095	3,090	5,426
<b>Neuromuscular Disease</b>	2,194	,111	390,521	1	<0,001	8,970	7,216	11,150

Table 3: Odds Ratio for the outcome (Hospitalization) for the Age variable and comorbidities analyzed. The real value of Age was used instead of an age group. Being a continuous variable, an Odds Ratio of 1.056 implies that, as the Age variable increases by 1, the probability of the patient having the outcome increases by 5.6%. **B**, **S.E**, and **Wald** are the unstandardized regression weight, how much the unstandardized regression weight can vary by, and test statistic for the individual predictor variable, respectively.

	<b>B</b>	<b>S.E</b>	<b>Wald</b>	<b>df</b>	<b>p-value</b>	<b>Odds Ratio</b>	<b>95% C.I</b>	
							<b>Lower</b>	<b>Upper</b>
<b>Age</b>	,055	,001	2060,954	1	<0,001	1,056	1,054	1,059
<b>Asthma</b>	-,500	,208	5,747	1	,017	,607	,403	,913
<b>Cancer</b>	1,750	,086	413,177	1	<0,001	5,757	4,863	6,816
<b>Cardiac Disorder</b>	4,447	,595	55,837	1	<0,001	85,364	26,590	274,050
<b>Diabetes</b>	1,661	,065	643,600	1	<0,001	5,263	4,629	5,983
<b>Hematologic Disease</b>	2,297	,150	235,486	1	<0,001	9,942	7,414	13,331
<b>HIV</b>	1,360	,205	43,961	1	<0,001	3,897	2,607	5,825
<b>Renal Disease</b>	2,642	,115	524,916	1	<0,001	14,035	11,196	17,594
<b>Liver Disease</b>	2,178	,206	111,986	1	<0,001	8,828	5,897	13,214
<b>Lung Disease</b>	1,574	,083	358,891	1	<0,001	4,824	4,099	5,677
<b>Neuromuscular Disease</b>	2,411	,080	898,181	1	<0,001	11,142	9,517	13,045

Table 4: Odds Ratio for the outcome (ICU stay) for the Age variable and comorbidities analyzed. The real value of Age was used instead of an age group. Being a continuous variable, an Odds Ratio of 1.037 implies that, as the Age variable increases by 1, the probability of the patient having the outcome increases by 3.7%. **B**, **S.E**, and **Wald** are the unstandardized regression weight, how much the unstandardized regression weight can vary by, and test statistic for the individual predictor variable, respectively.

	<b>B</b>	<b>S.E</b>	<b>Wald</b>	<b>df</b>	<b>p-value</b>	<b>Odds Ratio</b>	<b>95% C.I</b>	
							<b>Lower</b>	<b>Upper</b>
<b>Age</b>	,036	,003	125,631	1	<0,001	1,037	1,030	1,043
<b>Asthma</b>	,137	,508	,073	1	,788	1,147	,424	3,102
<b>Cancer</b>	1,088	,227	23,022	1	<0,001	2,968	1,903	4,630
<b>Cardiac Disorder</b>	2,864	,356	64,721	1	<0,001	17,540	8,729	35,246
<b>Diabetes</b>	1,455	,157	85,863	1	<0,001	4,286	3,151	5,832
<b>Hematologic Disease</b>	1,062	,366	8,427	1	,004	2,892	1,412	5,922
<b>HIV</b>	1,682	,396	18,026	1	<0,001	5,377	2,473	11,688
<b>Renal Disease</b>	2,059	,191	115,773	1	<0,001	7,842	5,389	11,412
<b>Liver Disease</b>	1,308	,462	8,000	1	,005	3,698	1,494	9,152
<b>Lung Disease</b>	1,583	,182	75,657	1	<0,001	4,871	3,409	6,959
<b>Neuromuscular Disease</b>	,945	,214	19,571	1	<0,001	2,572	1,693	3,909

Table 5: Odds Ratio for the outcome (Death + hospitalisation + ICU stay) for the Age variable and comorbidities analyzed. The real value of Age was used instead of an age group. Being a continuous variable, an Odds Ratio of 1.055 implies that, as the Age variable increases by 1, the probability of the patient having the outcome increases by 5.5%. **B**, **S.E**, and **Wald** are the unstandardized regression weight, how much the unstandardized regression weight can vary by, and test statistic for the individual predictor variable, respectively.

	<b>B</b>	<b>S.E</b>	<b>Wald</b>	<b>df</b>	<b>p-value</b>	<b>Odds Ratio</b>	<b>95% C.I</b>	
							<b>Lower</b>	<b>Upper</b>
<b>Age</b>	,054	,001	2172,323	1	<0,001	1,055	1,053	1,058
<b>Asthma</b>	-,468	,201	5,426	1	,020	,626	,423	,928
<b>Cancer</b>	1,732	,084	427,447	1	<0,001	5,653	4,797	6,662
<b>Cardiac Disorder</b>	4,519	,594	57,790	1	<0,001	91,720	28,609	294,056
<b>Diabetes</b>	1,625	,063	663,617	1	<0,001	5,079	4,488	5,748
<b>Hematologic Disease</b>	2,136	,140	232,727	1	<0,001	8,464	6,433	11,136
<b>HIV</b>	1,297	,199	42,592	1	<0,001	3,660	2,479	5,403
<b>Renal Disease</b>	2,722	,114	570,963	1	<0,001	15,214	12,169	19,020
<b>Liver Disease</b>	2,085	,198	110,705	1	<0,001	8,045	5,456	11,863
<b>Lung Disease</b>	1,566	,080	382,806	1	<0,001	4,786	4,092	5,599
<b>Neuromuscular Disease</b>	2,379	,077	961,965	1	<0,001	10,791	9,285	12,542

Table 6: Odds Ratio for the association between the age, categories of comorbidity and outcome (Death) in patients with Covid-19. The continuous value of Age was used instead of an age group. Being a continuous variable, an Odds Ratio of 1.084 implies that, as the Age variable increases by 1, the probability of the patient having the outcome increases by 8.4%. **B**, **S.E**, and **Wald** are the unstandardized regression weight, how much the unstandardized regression weight can vary by, and test statistic for the individual predictor variable, respectively.

	<b>B</b>	<b>S.E</b>	<b>Wald</b>	<b>df</b>	<b>p-value</b>	<b>Odds Ratio</b>	<b>95% C.I</b>	
							<b>Lower</b>	<b>Upper</b>
<b>Age</b>	,081	,004	479,827	1	<0,001	1,084	1,076	1,092
<b>Cancer</b>	,426	,173	6,072	1	,014	1,532	1,091	2,150
<b>Cardiac Disorder</b>	1,337	,326	16,832	1	<0,001	3,806	2,010	7,208
<b>Diabetes</b>	,077	,138	,308	1	,579	1,080	,824	1,416
<b>Hematologic Disease</b>	,237	,238	,992	1	,319	1,267	,795	2,020
<b>HIV</b>	,666	,477	1,948	1	,163	1,946	,764	4,955
<b>Renal Disease</b>	1,467	,146	101,314	1	<0,001	4,335	3,258	5,768
<b>Liver Disease</b>	,142	,445	,102	1	,749	1,153	,482	2,760
<b>Lung Disease</b>	,419	,162	6,676	1	,010	1,520	1,106	2,089
<b>Neuromuscular Disease</b>	,825	,124	44,408	1	<0,001	2,281	1,790	2,907

Table 7: Odds Ratio for the association between the age, categories of comorbidity and outcome (Hospitalization) in patients with Covid-19. The continuous value of Age was used instead of an age group. Being a continuous variable, an Odds Ratio of 1.045 implies that, as the Age variable increases by 1, the probability of the patient having the outcome increases by 4.5%. **B**, **S.E.**, and **Wald** are the unstandardized regression weight, how much the unstandardized regression weight can vary by, and test statistic for the individual predictor variable, respectively.

	<b>B</b>	<b>S.E</b>	<b>Wald</b>	<b>df</b>	<b>p-value</b>	<b>Odds Ratio</b>	<b>95% C.I</b>	
							<b>Lower</b>	<b>Upper</b>
<b>Age</b>	,044	,001	1163,323	1	<0,001	1,045	1,042	1,048
<b>Asthma</b>	-,417	,239	3,042	1	,081	,659	,412	1,053
<b>Cancer</b>	,953	,100	91,482	1	<0,001	2,594	2,134	3,154
<b>Cardiac Disorder</b>	3,189	,656	23,605	1	<0,001	24,268	6,703	87,859
<b>Diabetes</b>	,757	,076	98,730	1	<0,001	2,132	1,837	2,476
<b>Hematologic Disease</b>	1,199	,186	41,617	1	<0,001	3,316	2,304	4,773
<b>HIV</b>	1,168	,255	20,935	1	<0,001	3,215	1,949	5,301
<b>Renal Disease</b>	1,470	,132	124,525	1	<0,001	4,351	3,361	5,633
<b>Liver Disease</b>	1,408	,246	32,743	1	<0,001	4,088	2,524	6,621
<b>Lung Disease</b>	,824	,100	68,383	1	<0,001	2,279	1,875	2,771
<b>Neuromuscular Disease</b>	1,395	,092	232,288	1	<0,001	4,036	3,373	4,829



Table 8: Odds Ratio for the association between the age, categories of comorbidity and outcome (ICU stay) in patients with Covid-19. The continuous value of Age was used instead of an age group. Being a continuous variable, an Odds Ratio of 1.029 implies that, as the Age variable increases by 1, the probability of the patient having the outcome increases by 2.9%. **B**, **S.E**, and **Wald** are the unstandardized regression weight, how much the unstandardized regression weight can vary by, and test statistic for the individual predictor variable, respectively.

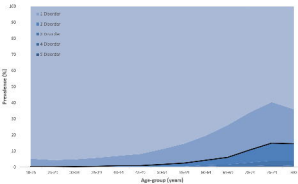
	<b>B</b>	<b>S.E</b>	<b>Wald</b>	<b>df</b>	<b>p-value</b>	<b>Odds Ratio</b>	<b>95% C.I</b>	
							<b>Lower</b>	<b>Upper</b>
<b>Age</b>	,028	,004	63,111	1	<0,001	1,029	1,022	1,036
<b>Cancer</b>	,422	,237	3,165	1	,075	1,525	,958	2,426
<b>Cardiac Disorder</b>	1,661	,387	18,453	1	<0,001	5,266	2,468	11,237
<b>Diabetes</b>	,735	,169	18,964	1	<0,001	2,085	1,498	2,902
<b>Hematologic Disease</b>	-,035	,387	,008	1	,928	,966	,452	2,062
<b>HIV</b>	1,282	,420	9,327	1	,002	3,605	1,583	8,210
<b>Renal Disease</b>	,958	,217	19,522	1	<0,001	2,607	1,704	3,988
<b>Liver Disease</b>	,339	,494	,470	1	,493	1,404	,533	3,699
<b>Lung Disease</b>	,874	,194	20,202	1	<0,001	2,397	1,637	3,509
<b>Neuromuscular Disease</b>	-,040	,226	,032	1	,858	,960	,616	1,497

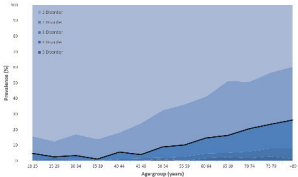
Table 9: Odds Ratio for the association between the age, categories of comorbidity and outcome (Death + Hospitalization + ICU stay) in patients with Covid-19. The continuous value of Age was used instead of an age group. Being a continuous variable, an Odds Ratio of 1.045 implies that, as the Age variable increases by 1, the probability of the patient having the outcome increases by 4.5%. **B**, **S.E.**, and **Wald** are the unstandardized regression weight, how much the unstandardized regression weight can vary by, and test statistic for the individual predictor variable, respectively.

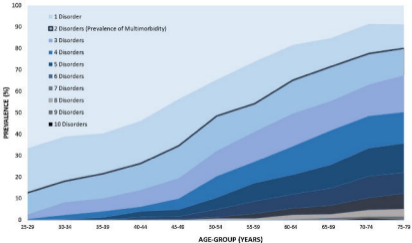
	<b>B</b>	<b>S.E</b>	<b>Wald</b>	<b>df</b>	<b>p-value</b>	<b>Odds Ratio</b>	<b>95% C.I</b>	
							<b>Lower</b>	<b>Upper</b>
<b>Age</b>	,044	,001	1256,725	1	<0,001	1,045	1,042	1,047
<b>Asthma</b>	-,402	,231	3,031	1	,082	,669	,425	1,052
<b>Cancer</b>	,962	,097	99,003	1	<0,001	2,617	2,165	3,163
<b>Cardiac Disorder</b>	3,312	,651	25,850	1	<0,001	27,449	7,656	98,417
<b>Diabetes</b>	,727	,074	97,752	1	<0,001	2,069	1,791	2,390
<b>Hematologic Disease</b>	,969	,176	30,425	1	<0,001	2,636	1,868	3,719
<b>HIV</b>	1,037	,249	17,315	1	<0,001	2,821	1,731	4,597
<b>Renal Disease</b>	1,584	,130	149,639	1	<0,001	4,877	3,783	6,286
<b>Liver Disease</b>	1,311	,238	30,289	1	<0,001	3,709	2,326	5,915
<b>Lung Disease</b>	,824	,096	73,811	1	<0,001	2,279	1,888	2,750
<b>Neuromuscular Disease</b>	1,393	,087	256,897	1	<0,001	4,028	3,397	4,776

Table 10: Odds Ratio for the association between the age, number of comorbidities and outcome (Death + Hospitalization + ICU stay) in patients with Covid-19. Both Age and N<sup>o</sup> of comorbidities are continuous variables, i.e, an Odds Ratio of 2.695 implies that, as the N<sup>o</sup> of comorbidities increases by 1, the probability of the patient having the outcome increases by 169.5%. **B**, **S.E**, and **Wald** are the unstandardized regression weight, how much the unstandardized regression weight can vary by, and test statistic for the individual predictor variable, respectively.

	<b>B</b>	<b>S.E.</b>	<b>Wald</b>	<b>df</b>	<b>p-value</b>	<b>Odds Ratio</b>	<b>95% C.I</b>	
							<b>Lower</b>	<b>Upper</b>
<b>Age</b>	,045	,001	1384,568	1	<0,001	1,046	1,044	1,049
<b>N<sup>o</sup> of comorbidities</b>	,991	,033	887,274	1	<0,001	2,695	2,524	2,876









Condition	Prevalence	US	UK	Japan	Germany	France	Italy	Spain	China	India	Brazil	South Africa	Australia	Canada	Other	
LBP	34.8%	LBP														
HTA	28.5%	19.5	22	HTA												
UBP	25.6%	22.5	12.0	UBP												
Arthrosis	24.5%	18.5	13.8	15.5	Arthrosis											
Allergy	19.1%	9.8	6.2	7.9	6.5	Allergy										
Depression	18.0%	8.8	5.9	7.4	6.9	4.4	Depression									
Diabetes	9.8%	5.5	6.0	4.5	5.1	2.2	2.0	Diabetes								
UI	6.7%	4.8	4.0	3.9	4.3	1.8	2.4	1.9	UI							
COPD	5.8%	3.5	2.6	2.9	3.0	1.9	1.8	1.1	1.2	COPD						
Asthma	4.9%	2.7	1.8	2.2	2.0	1.0	1.2	0.8	0.8	2.5	Asthma					
CKD	4.5%	3.2	2.5	2.5	2.9	1.3	1.5	1.2	1.4	0.7	0.5	CKD				
CHD	3.6%	2.4	2.5	2.0	2.3	1.0	1.0	0.9	0.9	0.8	0.5	0.7	CHD			
Stroke	1.7%	0.9	1.3	0.8	1.0	0.3	0.5	0.4	0.4	0.2	0.1	0.3	0.3	Stroke		
MI	1.5%	1.0	1.2	0.8	0.9	0.3	0.4	0.6	0.4	0.3	0.3	0.3	0.6	0.2	MI	
LC	0.7%	0.5	0.4	0.4	0.4	0.2	0.2	0.2	0.2	0.1	0.1	0.2	0.1	LC		



Sinais de pneumonia na ausculta

Sinais de insuficiência respiratória aguda na ausculta

Sinais extra (especificar):

Manifestações clínicas

Data do início das alterações

Data do diagnóstico

Informante

O doente apresenta comorbilidades

Gravidez, se aplicável

Complicações

## Situação epidemiológica

### Viagens:

Durante o período de incubação viajou dentro do território português?

Informante:

O doente apresenta comorbilidades:

Alergias:

- 
- 
- 
- 

Diabetes:

Interações medicamentosas:

Doença neurológica ou neuromuscular crónica:

Asma:

Doença pulmonar crónica:

Patologia hepática:

Doenças hematológicas crónicas:

Doença renal crónica:

Deficiência renal crónica:

Se outra, qual?

Gravidez, se aplicável:

Comorbilidades: