

Heterogeneity in response to serological exposure markers of recent *Plasmodium vivax* infections in contrasting epidemiological contexts

Short title: Antibody responses to *P. vivax* in contrasting epidemiology contexts

Authors and Affiliations

Jason Rosado^{1,2}, Michael T. White¹, Rhea J. Longley^{3,4}, Marcus Lacerda^{5,6}, Wuelton Monteiro⁶, Jessica Brewster³, Jetsumon Sattabongkot⁷, Mitchel Guzman-Guzman⁹, Alejandro Llanos-Cuentas⁸, Joseph M. Vinetz^{8,9,10,11}, Dionicia Gamboa^{9,11}, Ivo Mueller^{1,3,4*}

1. Unit of Malaria: Parasites and hosts, Institut Pasteur, Paris, France
2. Sorbonne Université, ED 393, F-75005 Paris, France
3. Walter and Eliza Hall Institute of Medical Research, Melbourne, Australia
4. Department of Medical Biology, University of Melbourne, Australia
5. Instituto Leônidas & Maria Deane (Fiocruz), Manaus, Brazil
6. Tropical Medicine Foundation Dr Heitor Vieira Dourado, Manaus, Amazonas, Brazil
7. Vivax Research Unit, Faculty of Tropical Medicine, Mahidol University, Bangkok, Thailand
8. Instituto de Medicina Tropical Alexander von Humboldt, Universidad Peruana Cayetano Heredia, Lima, Peru
9. Laboratorio ICEMR-Amazonia, Laboratorios de Investigación y Desarrollo, Facultad de Ciencias y Filosofía, Universidad Peruana Cayetano Heredia, Lima, Peru
10. Section of Infectious Diseases, Department of Internal Medicine, Yale School of Medicine, New Haven, CT, USA
11. Departamento de Ciencias Celulares y Moleculares, Facultad de Ciencias y Filosofía, Universidad Peruana Cayetano Heredia, Lima, Peru

*Correspondence

E-mail: mueller@wehi.edu.au (I.M)

35 **Abstract**

36 **Background**

37 Antibody responses as serological markers of *Plasmodium vivax* infection have been shown to correlate with exposure,
38 but little is known about the other factors that affect antibody responses in naturally infected people from endemic
39 settings. To address this question, we studied IgG responses to novel serological exposure markers (SEMs) of *P. vivax* in
40 three settings with different transmission intensity.

41 **Methodology**

42 We validated a panel of 34 SEMs in a Peruvian cohort with up to three years' longitudinal follow-up using a multiplex
43 platform and compared results to data from cohorts in Thailand and Brazil. Linear regression models were used to
44 characterize the association between antibody responses and age, the number of detected blood-stage infections during
45 follow-up, and time since previous infection. Receiver Operating Characteristic (ROC) analysis was used to test the
46 performance of SEMs to identify *P. vivax* infections in the previous 9 months.

47 **Principal findings**

48 Antibody titers were associated with age, the number of blood-stage infections, and time since previous *P. vivax* infection
49 in all three study sites. The association between antibody titers and time since previous *P. vivax* infection was stronger in
50 the low transmission settings of Thailand and Brazil compared to the higher transmission setting in Peru. Of the SEMs
51 tested, antibody responses to RBP2b had the highest performance for classifying recent exposure in all sites, with area
52 under the ROC curve (AUC) = 0.83 in Thailand, AUC = 0.79 in Brazil, and AUC = 0.68 in Peru.

53 **Conclusions**

54 In low transmission settings, *P. vivax* SEMs can accurately identify individuals with recent blood-stage infections. In higher
55 transmission settings, the accuracy of this approach diminishes substantially. We recommend using *P. vivax* SEMs in low
56 transmission settings pursuing malaria elimination, but they are likely to be less effective in high transmission settings
57 focused on malaria control.

58

59 **Author Summary**

60 *Plasmodium vivax* still poses a threat in many countries due to its ability to cause recurrent infections. Key to achieving
61 the goal of malaria elimination is the ability to quickly detect and treat carriers of relapsing parasites. Failing to identify
62 this transmission reservoir will hinder progress towards malaria elimination. Recently, novel serological markers of recent
63 exposure to *P. vivax* (SEM) have been developed and validated in low transmission settings. It is still poorly understood
64 what factors affect the antibody response to these markers when evaluated in contrasting endemic contexts. To
65 determine the factors that influence the antibody response to SEM, we compared the antibody levels in three sites with
66 different transmission intensity: Thailand (low), Brazil (moderate) and Peru (high). In this study, we found that
67 transmission intensity plays a key role in the acquisition of the antibody repertoire to *P. vivax*. In highly endemic sites, it
68 is likely that immunological memory resulting from a constant and sustained exposure will impact the performance of
69 SEMs to detect individuals with recent exposure to *P. vivax*. In summary, SEMs that perform well in low transmission sites
70 do not perform as well in high transmission regions.

71

72

73

74

75

76

77

78 Introduction

79 *Plasmodium vivax* is the most geographically widespread *Plasmodium* species and the second largest cause of clinical
80 malaria worldwide. Although the global burden has decreased from an estimated 24.5 million cases in 2000 to 7.5 million
81 cases in 2018, *P. vivax* remains a challenging parasite to control and eliminate due to its biology, notably its ability to
82 relapse from dormant liver-stage hypnozoites [1], and its high transmission potential caused by rapid production of
83 gametocytes and short development time in the mosquito vector [2].

84 In tropical regions, most *P. vivax* relapses occur within 9 months of the initial mosquito bite, with longer intervals observed
85 in temperate regions and parts of the sub-tropics [1]. Except in India, relapses typically account for greater than 80% of all
86 *P. vivax* blood-stage infections [3]. Moreover, in cross-sectional surveys 90-100% of infections are asymptomatic [4] and
87 up to 67% of infections are not detected by conventional screening tools such as light microscopy [5] because of low
88 parasite density [6, 7]. Although the role of asymptomatic infections is not well understood, all *P. vivax* blood-stage
89 infections produce gametocytes and may contribute to maintaining transmission [8].

90 As the number of malaria cases in a region decreases and transmission becomes more heterogeneous, monitoring and
91 mapping of residual transmission pockets becomes increasingly important. Many countries have declared the ambitious
92 goal of eliminating malaria by 2030, and thus, a tool able to identify residual transmission or document the absence of
93 recent transmission is urgently needed. This tool would ideally detect the entire *P. vivax* infectious reservoir composed of
94 individuals with asymptomatic blood-stage infections as well as silent hypnozoite carriers.

95 Light microscopy and qPCR, although informative, are imperfect tools due to the poor sensitivity for detecting low density
96 blood-stage infections (light microscopy) and the inability to detect hypnozoite carriers (light microscopy and qPCR). The
97 antibody responses mounted to *P. vivax* can last weeks to several years after exposure [9, 10], making them an ideal tool
98 for assessing transmission history. Thus, by exploiting antibody longevity to assess recent exposure, we can use antibody
99 levels to estimate the time since previous exposure and potentially detect hypnozoite carriers [11].

100 Serology has been used to estimate malaria risk and endemicity at the population level, detecting temporal and spatial
101 variation in malaria exposure [12], and evaluating malaria control efforts in areas where transmission has decreased to

low levels [13]. Therefore, serological markers are an appealing tool in the context of malaria elimination because population-level serological signatures can provide insights of both current and recent exposure to malaria when parasite prevalence surveys are no longer (cost-)efficient because of the small proportion of individuals with detectable blood-stage infection.

The lack of standardized methods and antigens has hindered the implementation of serology as a tool for malaria surveillance. Recently, novel Serological Exposure Markers (SEM) to *P. vivax* have been developed and validated in low transmission settings showing a promising application in detecting likely hypnozoite carriers [11]. Their performance at higher transmission levels is yet to be clarified. It is particularly important to understand what factors cause variation in SEM's performance before their application at a population level. Here, using a sero-epidemiological approach, we compare the performance of SEMs to detect recent exposure to *P. vivax* in three different transmission settings. Epidemiological factors such as age, number of detected blood-stage infections and time since the previous infection were evaluated to understand how they affect SEM performance.

Methods

Ethics

The Peruvian cohort was approved by the Institutional Ethics Committee from the Universidad Peruana Cayetano Heredia (UPCH) (SIDISI 57395/2013) and from the University of California San Diego Human Subjects Protection Program (Project # 100765). UPCH also approved the use of the Peruvian serum samples in the Walter and Eliza Hall Institute of Medical Research (WEHI) (SIDISI 100873/2017). The Thai cohort was approved by the Ethics Committee of the Faculty of Tropical Medicine, Mahidol University, Thailand (MUTM 2013-027-01). The Brazilian study was approved by the FMT-HVD (51536/2012), and by the Brazilian National Committee of Ethics (CONEP) (349.211/2013). The Human Research Ethics Committee (HREC) at WEHI approved samples for use in Melbourne (#14/02).

Field Studies

The Peruvian cohort was conducted in two Amazonian villages in the Loreto Region: San José de Lupuna, and Cahuide [14]. Lupuna is located 10 km from Iquitos district (03°44.591'S, 73°19.615'W), a forested area only accessible by river.

127 Cahuide (04°13.785' S, 73°276' W) is located 60 km from Iquitos city on the Iquitos-Nauta road. Villagers work mainly in
128 agriculture, fishing and occasional hunting. In 2016, Malaria cases in Peru represented 14.3% of all cases in South America,
129 from which 96% were reported from Loreto Region [15, 16]. Malaria cases have been steadily increasing since 2010-2011,
130 after the cessation of the international financial support program “PAMAFRO”, and worsening due to the Loreto flood
131 between 2012-2013 that inundated and damaged many riverine communities [17]. Transmission is stable in both Lupuna
132 and Cahuide, with a peak season from November to May [14].

133 A three year-long observational cohort study was conducted over December 2012 – December 2015 in Loreto, Peru. Using
134 home-to-home and community-based screening, all-age asymptomatic volunteers without a recent history of fever or
135 antimalarial drug use were invited to participate in this cohort. A total of 456 volunteers were enrolled and sampled every
136 month over the three year-long cohort with 37 active case detection visits in total. Additionally, 244 participants were
137 enrolled and followed up in the last year of the cohort with 13 case detection visits. A total of 700 volunteers attended
138 the final visit at the end of year 3, and 590 serum samples were collected. The PCR prevalence at the beginning of the
139 cohort was 16% for *P. vivax* and 2% for *P. falciparum* [18].

140 Data from the Thai and Brazilian cohorts had been generated previously [11]. Briefly, year-long observational cohort
141 studies were conducted over 2013-2014 in Kanchanaburi/Ratchaburi provinces, Thailand [19], and 2014 in Brasileirinho,
142 Ipiranga and Puraquequara, three peri-urban communities in Manaus province, Amazonas State [20]. 999 volunteers were
143 enrolled from Thailand and sampled every month over the year-long cohort, with 14 active case detection visits performed
144 in total. 829 volunteers attended the final visit. A total of 1274 residents of all age groups were enrolled from Brazil and
145 sampled every month over the year-long period, with 13 active case detection visits performed in total. 928 volunteers
146 attended the final visit with plasma from 925 available. At the end of the follow-up, the PCR prevalence of *P. vivax* was
147 3.0% in Thailand, and 4.2% in Brazil (Table III in S1 File), while the cumulative PCR prevalence of *P. vivax* was 11.7% and
148 25.43% in Thailand and Brazil, respectively.

149 **Sample collection and molecular diagnosis**

150 In the Peruvian cohort, blood samples were collected by finger prick onto filter paper and left to dry at room temperature.

151 Dried blood samples were stored at -20 °C prior to molecular diagnosis. In the last visit, whole blood samples were

152 collected and serum was separated by centrifugation and kept at -80°C until processing. DNA was isolated from dried
153 blood samples using the E.Z.N.A.® Blood DNA Mini Kit (Omega Bio-tek, Inc., Norcross, GA, US), according to the
154 manufacturer's instructions. Subsequent amplification was performed by a real-time quantitative PCR (qPCR) method
155 using PerfeCTa® SYBR® Green FastMix 1250 (Quanta bio, Beverly, MA, US) as previously described [18]. In the Thai and
156 Brazil cohorts, malaria parasites were detected by qPCR as previously described [8, 21].

157 **Multiplex serological evaluation**

158 Serum samples from the Peruvian cohort were evaluated following the protocol reported by Longley et al [22]. Briefly,
159 proteins were coupled to non-magnetic microspheres. Protein-coupled microspheres were incubated with plasma (1/100
160 dilution in phosphate-buffered saline containing 1% bovine serum albumin and 0.05% (v/v) Tween-20, denoted as PBT)
161 for 30 min at room temperature. After washing, microspheres were incubated for 15 minutes at room temperature with
162 an R-Phycoerythrin (R-PE) -conjugated Donkey Anti-Human IgG antibody (cat#709-116-098; JacksonImmunoResearch, UK)
163 to detect total IgG (1/100 dilution). Final washing was followed by resuspension of microspheres in 100 µL of PBT. This
164 protocol was previously validated in other cohorts as well as in this cohort by testing a small group of samples in duplicate
165 (data not shown). Therefore, serum samples were evaluated in singlicate format (one well per sample).

166 34 expressed full-length proteins were tested (See Table IV in S1 File for details). They were down-selected from a larger
167 panel as previously reported [11]. 30 of the expressed proteins corresponded to erythrocytic stages, one to pre-
168 erythrocytic stages, one to sexual stages, and one to a putative protein.

169 Plasma samples from healthy donors from non-malaria endemic regions (Melbourne, Australia, and Bangkok, Thailand)
170 were used as negative controls (n = 274) [11] (noting that the control set from Rio, Brazil, was not included in the current
171 study). A standard curve made of pooled plasma from hyper-immune Papua New Guinea adults (serial dilutions ranging
172 from 1:50 to 1:51200) was used in each run for quality control and normalization purposes. The antibody measurements
173 were performed in a Milliplex® platform based on Luminex® technology. Antibody levels were converted from median
174 fluorescence intensity to relative antibody unit (RAU) using a 5-parameter logistic model written in R. Published serological
175 data from the Thai and Brazilian cohorts were compared to Peruvian antibody profiles [11].

176 **Statistical analysis**

177 All epidemiological data was obtained from the questionnaires or laboratory tests recorded in the databases from the
178 cohorts in Peru, Thailand and Brazil. This study generated new monthly qPCR data and serological data from the final time
179 point from the Peruvian cohort; however, we only used qPCR data of the 13 months preceding the last time-point. We
180 characterized the association between antibody responses and PCR positive blood-stage infections in the Peruvian cohort
181 by fitting multivariate linear regression models adjusted for confounders. A Bayesian Information Criterion (BIC) was used
182 to select the model with the best explanatory variables. A retrospective analysis was performed taking into account the
183 last day of follow up as a point of reference, i.e. the day of the serum or plasma collection (D0 = day 0).

184 To test the performance of the SEMs to identify recent *P. vivax* exposure, individuals in the cohorts were categorized
185 according to their history of blood-stage infection. Individuals with at least one qPCR positive *P. vivax* sample in the
186 previous 9 months were classified as “recently exposed”, whereas those with old infections (> 9 months) or no infections
187 in the time of follow up (13 months for Peru and Brazil, 14 months for Thailand), were classified as “not recently exposed”.
188 Receiver operating characteristic (ROC) curves were used to assess the trade-off between sensitivity and specificity of
189 using single SEMs to identify recent infections. Sensitivity was defined as the proportion of people with recent infections
190 with antibody titers higher than a given cut-off value. Specificity was defined as the proportion of subjects without recent
191 infections with antibody titers lower than the same cut-off value. We used the area under the ROC curve (AUC) value for
192 comparing the test performance given by an antibody response between the three study sites.

193 Linear discriminant analysis (LDA) was performed to identify the best combinations of antibody responses for classifying
194 recent infections. The best combination was assessed with cross-validation on disjoint training (2/3 of data) and testing
195 (1/3 of data) data sets, repeated 200 times. The AUC was calculated for each combination.

196 To determine the factors which drive variation in antibody responses, multivariate linear regression models were fitted
197 using: (i) age (a proxy of lifetime exposure); (ii) number of detected blood-stage infections during 13 months (Peru, Brazil)
198 or 14 months (Thailand) of follow up; (iii) time since previous blood-stage infection; and (iv) an error term accounting for
199 additional unexplained variation. Data on individuals with at least one blood-stage detection during 13 months was utilized
200 for this purpose. The total variance of each marker was normalized to 1 and was the sum of variance given by both

explained and unexplained variance, respectively. The contribution of each factor to the total variance was estimated using the “relaimpo” (<https://CRAN.R-project.org/package=relaimpo>) and “car” (<https://CRAN.R-project.org/package=car>) R packages [23, 24].

Statistical analysis was done using R 3.43 (<https://www.r-project.org/>) and the R packages MASS, ROCR, rpart, randomForest, and Stata version 12 (StataCorp. 2011. Stata Statistical Software: Release 12. College Station, TX: StataCorp LP.)

Results

Epidemiological characteristics of the Peruvian longitudinal cohort

Epidemiological characteristics of the Peruvian study population are summarized in Table 1. A total of 590 individuals had a serum sample at the end of the cohort. Of these individuals, 289 lived in Cahuide (CAH, 48.9%) and 301 lived in Lupuna (LUP, 51.1%). The average age of participants was 29.7 years (range: 3.8 – 85 years old). Individuals from Cahuide were younger than those from Lupuna ($p < 0.01$). The overall female/male rate was 1.39, with similar proportions in both sites (CAH: 1.44, LUP: 1.35). The short duration of residency in the community had previously been identified as a risk factor for *P. vivax* infection in these communities [18]. Almost 15% ($n = 89$) of participants had recently settled in the communities (<2 years), with higher proportions in Cahuide (26%) than Lupuna (3%) ($p < 0.0001$, χ^2 test).

At the last day of follow up (D0), the prevalence of *P. vivax* (Pv) infections detected by qPCR was 21.2% (LUP: 23.6%, CAH: 18.7%) (Fig 1A), of which only 7% were detected by LM (9 patent infections). Age has been described as a risk factor for *P. vivax* exposure at the baseline of this cohort [14]; therefore, we compared the Pv prevalence by qPCR among three age groups at the last time point of follow up. There were no significant differences in prevalence among three defined age groups ($p > 0.05$). The median parasite density by qPCR was 1.55 parasites/ μ L (IQR: 0.74 – 8.38). In the preceding year, December 2014 to December 2015, a total of 7,612 blood samples were collected during follow-up. Of the collected blood samples, 14.2% (1083/7612) were positive for *P. vivax* by qPCR. Of these qPCR positive samples 11.8% (128/1083) were positive by microscopy, and 2.8% (30/1083) exhibited symptoms. In 13 months of follow up (the last year of the cohort),

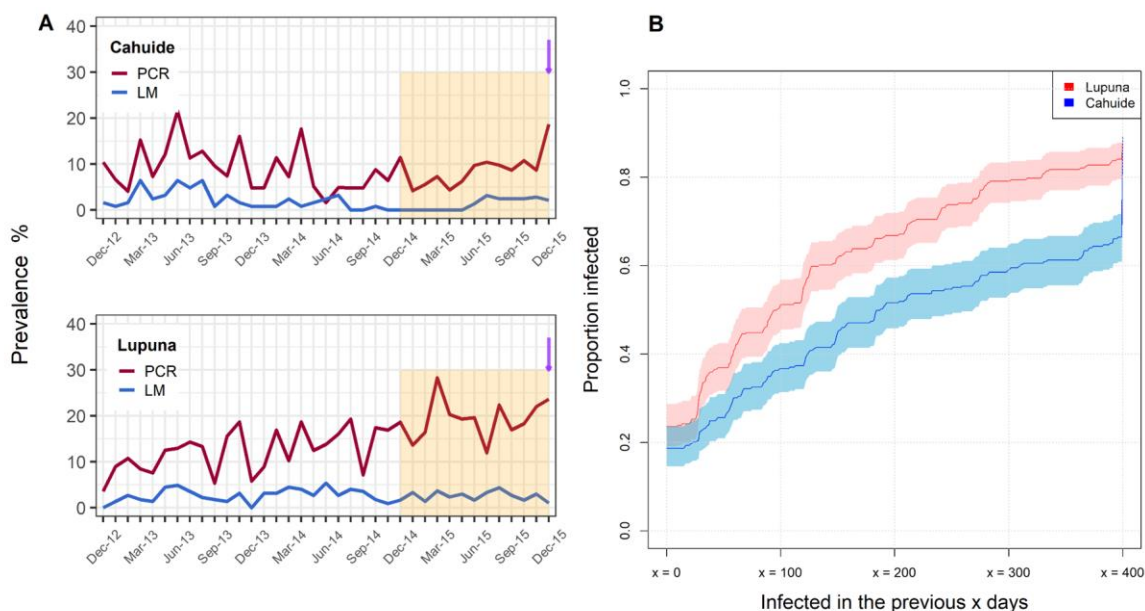
224 75.3% of individuals experienced at least one blood-stage *P. vivax* infection. There was a significant difference in
 225 cumulative PCR prevalence between Cahuide (66.1%) and Lupuna (84.1%) ($p < 0.0001$, χ^2 test) (Fig 1B).

Table 1. Epidemiologic characteristics of the newly reported Peruvian study sites and participants.

Characteristics	Cahuide n = 289	Lupuna n = 301	Total n = 590
Age (median, range)**	21.9 (3.80 – 81.88)	29.1 (4.44 – 85.57)	26.0 (3.80 – 85.57)
<15 years old (%)	40.48	31.56	35.93
15-39 years old (%)	33.56	31.56	32.54
≥40 years old (%)	25.95	36.88	31.53
Female sex (%)	59.16	57.47	58.30
Time in community, (%) ****			
<5 years	26.29	3.32	14.58
≥5 years	73.7	96.68	85.42
Forest-related occupation (>18 years old) (%)			
Fishing	0.62	2.67	1.73
Woodcutter	6.83	4.81	5.76
Farmer*	25.46	35.29	30.83
Education (%)			
None*	21.45	14.95	18.13
Primary school	57.10	52.16	54.58
Secondary school**	21.45	32.89	27.29
Infection by LM at D0			
<i>P. vivax</i> (%)	2.08	1.00	1.52
<i>P. falciparum</i> (%)	0	0	0.00
Infection by qPCR at D0 ^a			
<i>P. vivax</i> (%)	18.68	23.58	21.19
<i>P. falciparum</i> (%)	2.77	2.66	2.71
Months of follow-up, n (%)			
13 months****	164 (56.74)	76 (25.24)	240 (40.68)
37 months****	125 (43.25)	225 (74.75)	350 (59.32)
<i>P. vivax</i> density by qPCR at D0 (median, IQR)	1.60 (0.92 – 21.61)	1.39 (0.65 – 4.96)	1.55 (0.74 – 8.38)
Total clinical <i>P. vivax</i> infections, n (%)			
0	279 (96.54)	283 (94.01)	562 (95.25)
1	10 (3.46)	16 (5.31)	26 (4.41)
≥2	0 (0)	2 (0.66)	2 (0.34)
Total <i>P. vivax</i> infections by qPCR in 13 months, n (%)			
0****	98 (33.91)	48 (15.94)	146 (24.74)
1****	102 (35.29)	68 (22.59)	170 (28.81)
2	55 (19.03)	62 (20.60)	117 (19.83)

3*	23 (7.96)	42 (13.95)	65 (11.02)
≥4****	11 (3.80)	81 (26.91)	92 (15.59)
Time since previous <i>P. vivax</i> infection, <i>n</i> (%)			
< 1 month*	65 (22.49)	95 (31.56)	160 (27.12)
1-9 months*	97 (33.56)	131 (43.52)	228 (38.64)
9-13 months	29 (10.03)	27 (8.97)	56 (9.49)
No infection in 13 months****	98 (33.91)	48 (15.94)	146 (24.74)

^a Prevalence includes single – and mixed-species infections D0 = Day zero, day of blood and serum sampling for qPCR diagnosis and Luminex. Statistical differences between Cahuide and Lupuna, * $p < 0.05$; ** $p < 0.01$; *** $p < 0.001$; **** $p < 0.0001$.

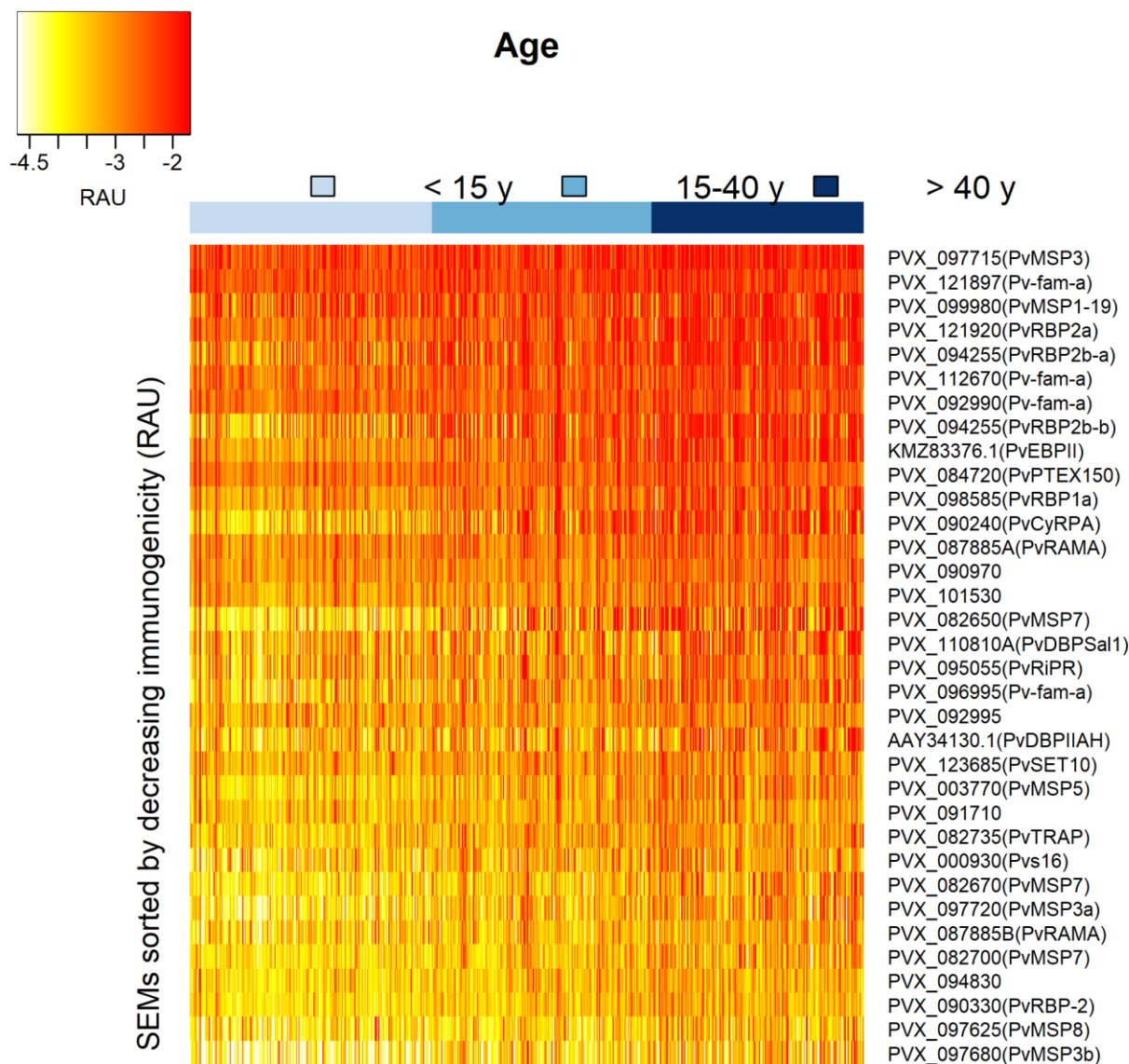


226

227 **Fig 1. Prevalence of *P. vivax* infection in the Peruvian cohort.** (A) Longitudinal prevalence of *P. vivax* infection by light microscopy or
 228 PCR in Cahuide and Lupuna. Retrospective analyses were performed using infection history over the last year of follow-up, which is
 229 indicated by the orange shadow. Day 0 is the last time point of follow-up where antibody measures were done; it is indicated in panel
 230 A by a purple arrow. (B) Proportion of individuals with PCR-detectable infection in the previous “x” days. Shaded areas represent the
 231 respective 95% confidence intervals.

232 Profiles of anti-*P. vivax* antibody responses in Peru

233 In Lupuna the geometric mean antibody response to 34 *P. vivax* proteins was 1.93 times higher than in Cahuide, although
 234 the distribution of antibody responses overlapped between both communities (0.0014 vs. 0.0007; $p < 0.001$, t-test, Fig II
 235 in S1 File). Henceforth, data from both communities were combined for subsequent analysis. Antibody responses to 26
 236 out of 34 antigens were positively associated with concurrent *P. vivax* infections (Odds ratio range: 1.38 – 1.99, $p < 0.01$,
 237 Table I in S1 File). Most of the responses to the tested markers showed a positive correlation with the individual’s age
 238 (spearman correlation factor range $\rho = 0.143 - 0.482$; $p < 0.001$, Fig 2), indicating a broader antibody repertoire and higher
 239 magnitude of the responses in individuals older than 40 years old.



240

241 **Fig 2. Heatmap of antibody responses to *P. vivax* serological exposure markers in the Peruvian cohort.** Relative antibody units
 242 (RAU) were log₁₀ transformed.

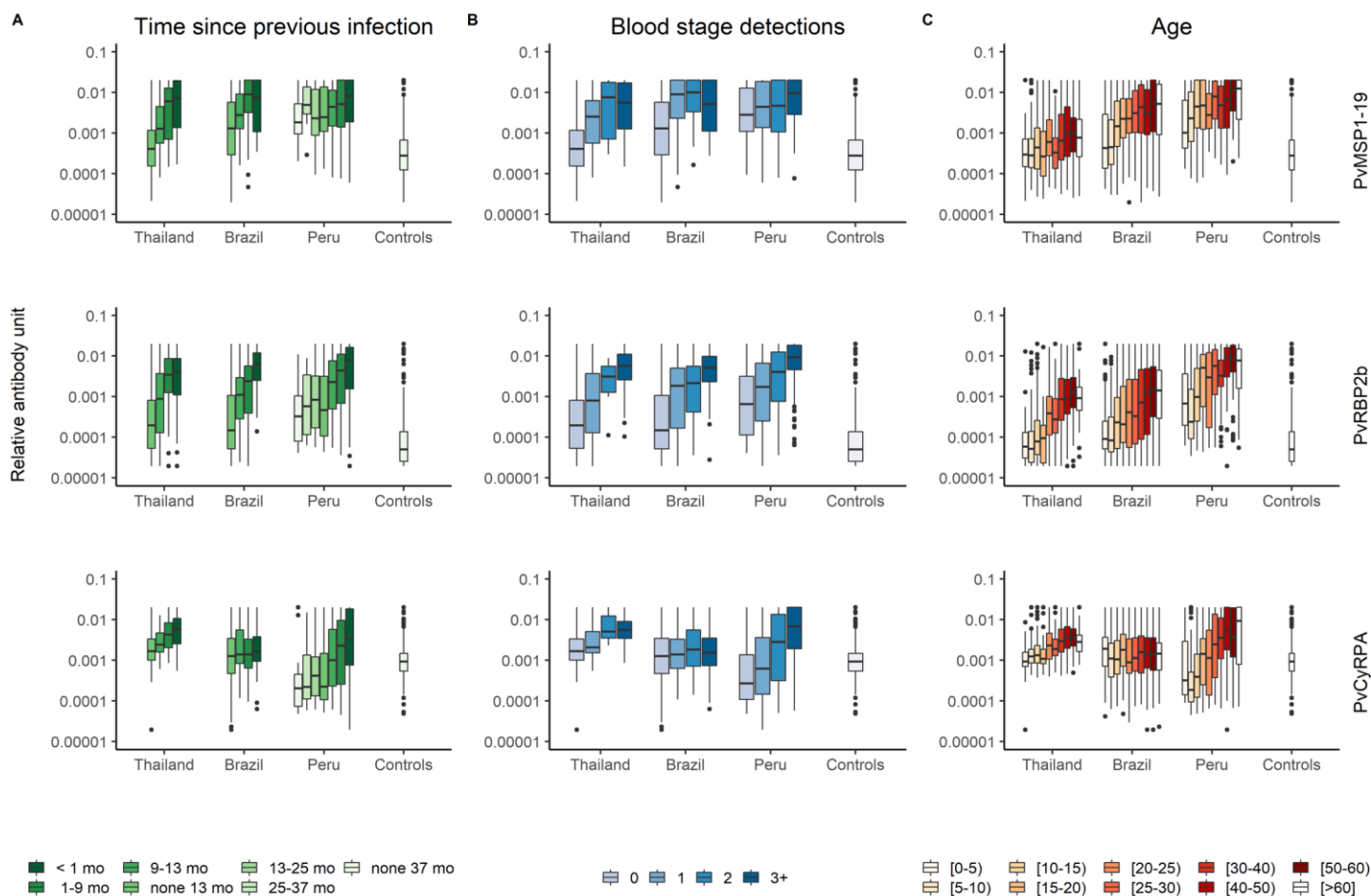
243 Antibody responses were strongly correlated where antigens were located in the same parasite location, showing a similar
 244 degree of immunogenicity and pattern of reactivity (Fig III in S1 File). For instance, antibody responses to invasion-related
 245 proteins (microneme proteins: PVX_110810A (PvDBP region II Sal1 strain), AAY34130.1 (PvDBP region II AH strain),
 246 PVX_095055 (PvRiPR), PVX_090240 (PvCyRPA), and KMZ83376.1 (PvEBP region II); and rhoptry proteins: PVX_094255
 247 (PvRBP2b), and PVX_098585 (PvRBP1a)) showed 50 to 98% correlation to each other, whereas, lower correlations were
 248 found with antigens of surface proteins (29 – 66%).

249 To identify epidemiological factors that influence the response to SEMs, linear regression models were fitted using
250 demographic and epidemiological data (Table II in S1 File). Age was the strongest explanatory factor for 32 out of 34
251 proteins (coefficient range: 0.146 – 1.127, $p < 0.01$). For instance, a doubling in age will give a 2.18 ($2^{1.127}$) increase in
252 antibody levels to PVX_082650 (PvMSP7). Living in Lupuna and being male were associated with high antibody titers to 20
253 SEMs (coefficient range: 0.096 – 0.538, $p < 0.01$) and 15 SEMs (coefficient range: 0.105 – 0.202, $p < 0.01$), respectively,
254 indicating the high exposure in this community. The number of qPCR infections detected in the previous 6 months was an
255 important predictor for 28 antibody responses (coefficient range: 0.042 – 0.194 / infection, $p < 0.01$), indicating that the
256 level of antibody response to these antigens depends upon the intensity of recent exposure. The antibody responses to
257 PVX_099980 (PvMSP1₁₉), PVX_096995 (Pv-fam-a), PVX_094255 (PvRBP2b₁₆₁₋₁₄₅₄ and PvRBP2b₁₉₈₆₋₂₆₅₃), PVX_095055
258 (PvRiPR) and PVX_087885 were positively associated with the incidence of clinical episodes during the previous 6 months
259 of follow up (coefficient: 0.384 – 0.505, $p < 0.01$).

260 **Transmission intensity and average antibody titers to SEM were higher in Peru than Brazil and Thailand**
261 At the final time point of follow-up, Peru had the highest prevalence of *P. vivax* by qPCR (21.2%, $p < 0.001$), followed by
262 Brazil (4.2%) and Thailand (3.0%) (Table III in S1 File). During the preceding year of follow up, 75.3% of Peruvian individuals
263 experienced at least one infection of *P. vivax* (Pv), followed by Brazil and Thailand where 25.4% and 11.7% of participants
264 had at least one infection. The average antibody titer to all 34 SEMs combined in the Peruvian cohort was 1.64 times
265 higher than Brazil ($p < 0.001$, t-test) and 2.43 times higher than Thailand ($p < 0.001$, t-test), confirming the existing high
266 exposure burden in the communities from the Peruvian amazon. The higher antibody titers in the Peruvian children (< 15
267 years old) compared with the same age group from Brazil (1.70 fold, $p < 0.001$, t-test) and Thailand (2.25 fold, $p < 0.001$,
268 t-test) is also consistent with higher *P. vivax* transmission and a more rapid acquisition of antibodies in this population.

269 Antibody levels to 34 Pv antigens positively correlated to the time since previous infection ($p < 0.001$, Kruskal-Wallis test,
270 Table VIII in S1 File) and the number of blood-stage detections during follow up in all three cohorts ($p < 0.001$, Kruskal-
271 Wallis test, Table IX in S1 File). We selected three antigens (PVX_094255B (PvRBP2b), PVX_090240 (PvCyRPA) and
272 PVX_099980 (PvMPS1₁₉)) as examples due to their documented immunogenicity [22, 25, 26]. Fig 3 shows the association
273 between the antibody response measured at the final time point and (i) time since previous infection; (ii) number of qPCR

274 positive blood-stage infections detected; and (iii) age. Similar patterns are seen across antibodies to all antigens in all
 275 regions (Fig IV-VI in S1 File). Antibody responses decrease with time since previous infection; increase with the number of
 276 blood-stage infections detected during one year of follow-up; and increase with age. Anti-CyRPA antibody responses in
 277 Brazil provide a notable exception, not exhibiting any significant association with the studied factors.



278 **Fig 3. Association of antibody responses to PvMSP1₁₉, PvRBP2b and PvCyRPA with epidemiological features.** (A) Antibody titers
 279 and time since previous infection during follow up. (B) Antibody titers and number of blood stage infections detected by qPCR. (C)
 280 Antibody titers across age groups. Note the controls are grouped together regardless of age. Mo: number of months since previous
 281 infection.
 282

283 **Marker selection to detect exposure in the previous 9 months**

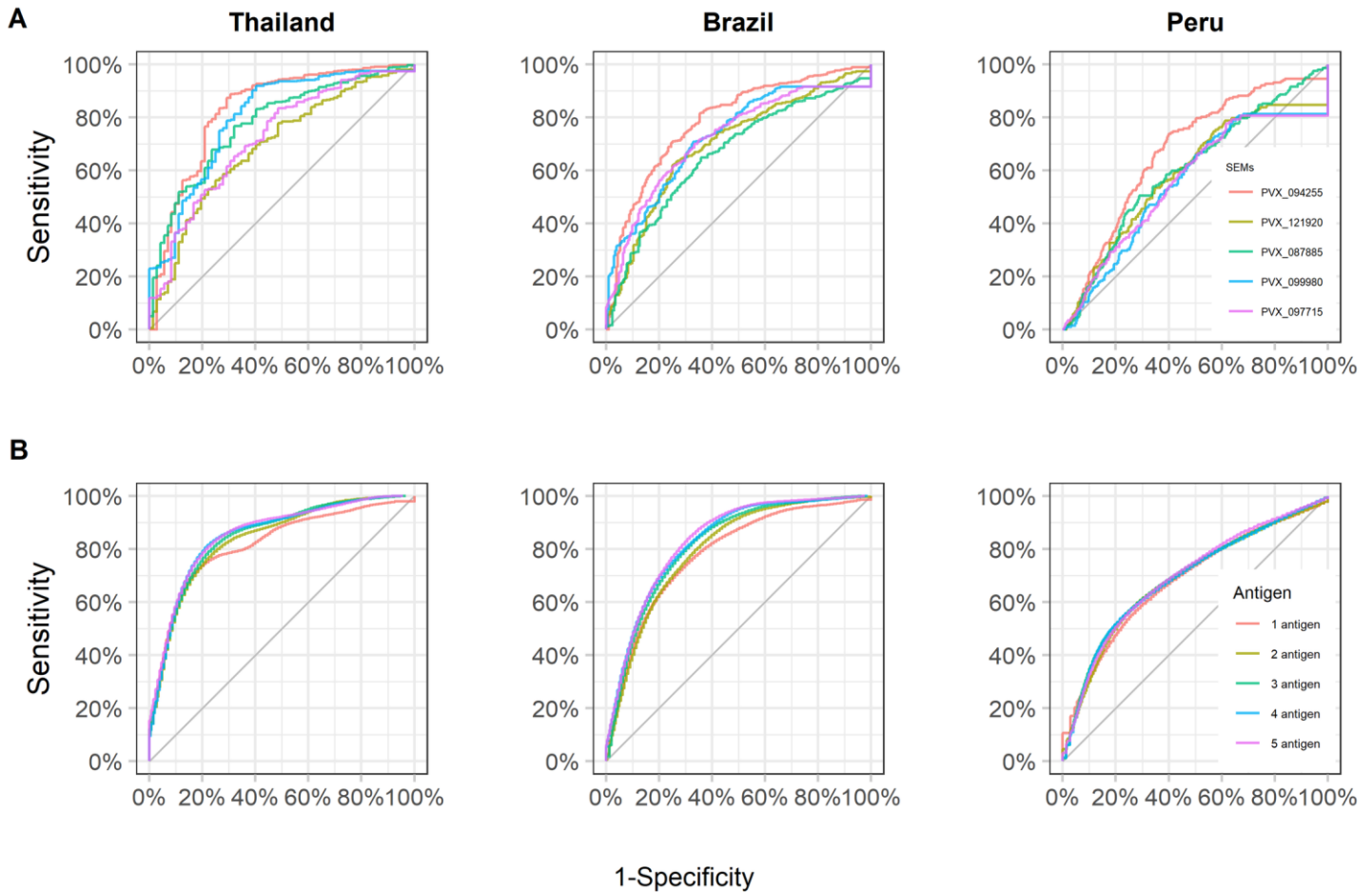
284 Antibody responses were assessed by their classification performance for detecting blood-stage *P. vivax* infection within
 285 the previous 9 months for each study site (with the results for Thailand and Brazil previously reported [11]). The sensitivity
 286 and specificity trade-off of each antigen was tested through the area under the ROC curve (AUC). The antibody response
 287 to PVX_094255 (PvRBP2b₁₆₁₋₁₄₅₄ and PvRBP2b₁₉₈₆₋₂₆₅₃) was the top marker for the three study sites and for the combined
 288 data set (Table IV and Table V in S1 File). Across all populations, the top ranking markers were the antibody responses to

289 PVX_094255 (PvRBP2b), PVX_121920 (PvRBP2a), PVX_087885 (PvRAMA), PVX_099980 (PvMSP1₁₉) and PVX_097715
290 (hypothetical PvMSP3) (Table IV in S1 File). Although the cohort studies were carried out in co-endemic sites for *P. vivax*
291 and *P. falciparum*, we did not find an association between the antibody levels to the top five proteins and recent *P.*
292 *falciparum* infection (Fig VII in S1 File). However, the number of individuals with at least one *P. falciparum* infection in the
293 preceding 13 months of last time point was low: Thailand n = 9, Brazil n = 17, Peru n = 61.

294 The antibody levels to the two constructs of PvRBP2b were highly correlated (Pearson's $r = 0.83$, $p < 0.001$), so we excluded
295 the PvRBP2b construct with the lower level of accuracy (PvRBP2b₁₉₈₆₋₂₆₅₃). At a population level, the performance of
296 antibody responses to PVX_094255 (PvRBP2b₁₆₁₋₁₄₅₄) for classifying recent infections was better in Thailand (AUC = 0.83)
297 and Brazil (AUC = 0.79), than in Peru (AUC = 0.68) (Fig 4A). Moreover, there were markers such as PVX_099980 (PvMSP1₁₉)
298 that showed good performance only in Thailand and Brazil, and others such as PVX_090240 (PvCyRPA) that performed
299 well only in Peru. Evaluation of antibody responses to PVX_094255B (PvRBP2b), PVX_090240 (PvCyRPA) and PVX_099980
300 (PvMSP1₁₉), indicates that they can be used to detect previous *P. vivax* infections within a wide time range of 1 – 12
301 months, and not just the previously investigated 9 month target (Fig VIII in S1 File) [11].

302 **Performance to detect recent exposure using combinations of antibody responses**

303 While antibody responses to single antigens are informative for detecting recent exposure, a combination of antibody
304 responses may lead to improved sensitivity and specificity in low-transmission regions [11]. Using a linear discriminant
305 analysis (LDA) classification algorithm, models including up to five antibody responses were tested for maximizing
306 information of exposure in the previous 9 months. The combinations of antibody responses that were most informative
307 of recent exposure were cross-validated, and performance plotted using ROC curves. The top combinations of antibody
308 responses per country were the following: Thailand: PvRBP2b, PvRBP2a, Pvs16, histone-lysine N-methyltransferase SET10
309 and PvMSP1₁₉ (AUC = 0.87); Brazil: PvRBP2b, hypothetical PvMSP3, PvRAMA, PVX_091710 and PVX_094830 (AUC = 0.85);
310 Peru: PvCyRPA, PvRBP1a, PVX_090970, and the members from the *P. vivax* Tryptophan Rich Antigens (PvTRAG or Pv-fam-
311 a) family PVX_096995 and PVX_092995 (AUC = 0.72). The top combinations of antibody responses for the combined data
312 was PvRBP2b, Pvs16, PVX_091710, PVX_084720 (PTEX150) and PVX_094830 (AUC = 0.86). As expected, the multi-
313 antibody response models performed better than the single antibody ones; although to a less extent for Peru (Fig 4B).



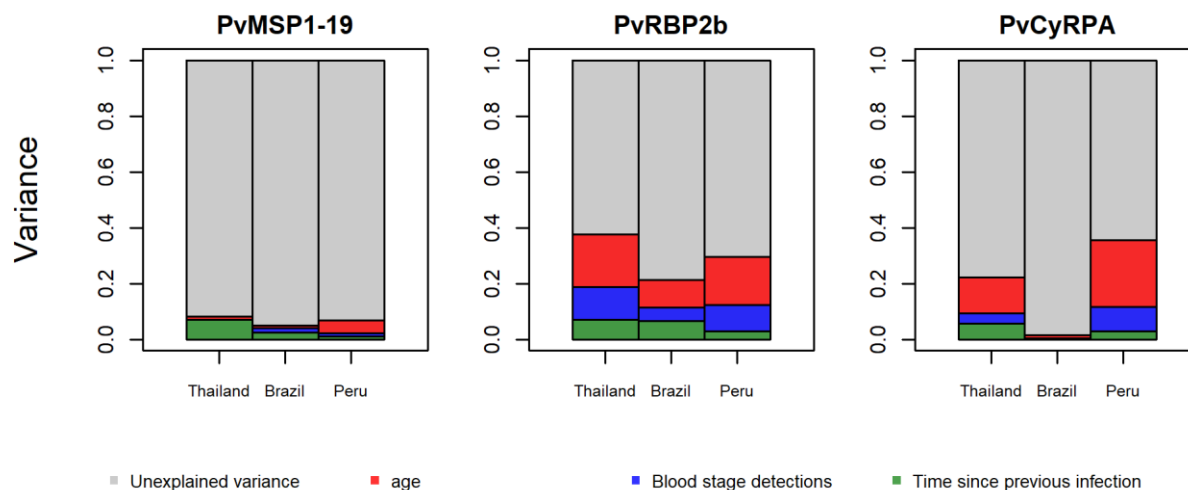
314

315 **Fig 4. Diagnostic performance for classifying recent exposure using antibody responses.** (A) Receiver operating characteristic (ROC)
 316 curve displays the diagnostic performance of 5 top antibody responses individually: PVX_094255 (PvRBP2b), PVX_121920 (PvRBP2a),
 317 PVX_087885 (PvRAMA), PVX_099980 (PvMSP1₁₉) and PVX_097715 (hypothetical PvMSP3) in the study sites. (B) ROC curves displaying
 318 the diagnostic performance to detect recent infections given by combinations of the top 5 antibody responses.

319 **Determinants of variation of antibody responses**

320 When focusing on PVX_094255B (PvRBP2b), PVX_090240 (PvCyRPA) and PVX_099980 (PvMSP1₁₉), the proportion of
 321 explained variance of antibody responses was different among sites and markers. For antibody responses to PvRBP2b the
 322 proportion of the variance explained was 37% in Thailand, 29% in Peru, and 21% in Brazil (Fig 5). Age (a proxy for lifetime
 323 exposure) accounted for the largest proportion of explained variance: 19% in Thailand, 9% in Brazil, and 16% in Peru. The
 324 time since previous infection explained 7% of the variance in Thailand, 7% of the variance in Brazil, and only 3% in Peru.
 325 The intensity of exposure in the previous year accounted for 12% of the explained variance in Thailand, 5% in Brazil, and
 326 10% in Peru. The studied factors explained substantially less of the variance in anti-PvMSP1₁₉ antibody responses. This is
 327 most likely due to the high immunogenicity of PvMSP1₁₉ causing the generation of strong antibody responses after few
 328 infections. The explained variance of the antibody response to PvCyRPA represented 35% of the total variance in Peru,

22% in Thailand and only 1.5% in Brazil. Age was the most important driver of the antibody response to PvCyRPA in Peru (0.35) followed by Thailand (0.13), and Brazil (0.01).

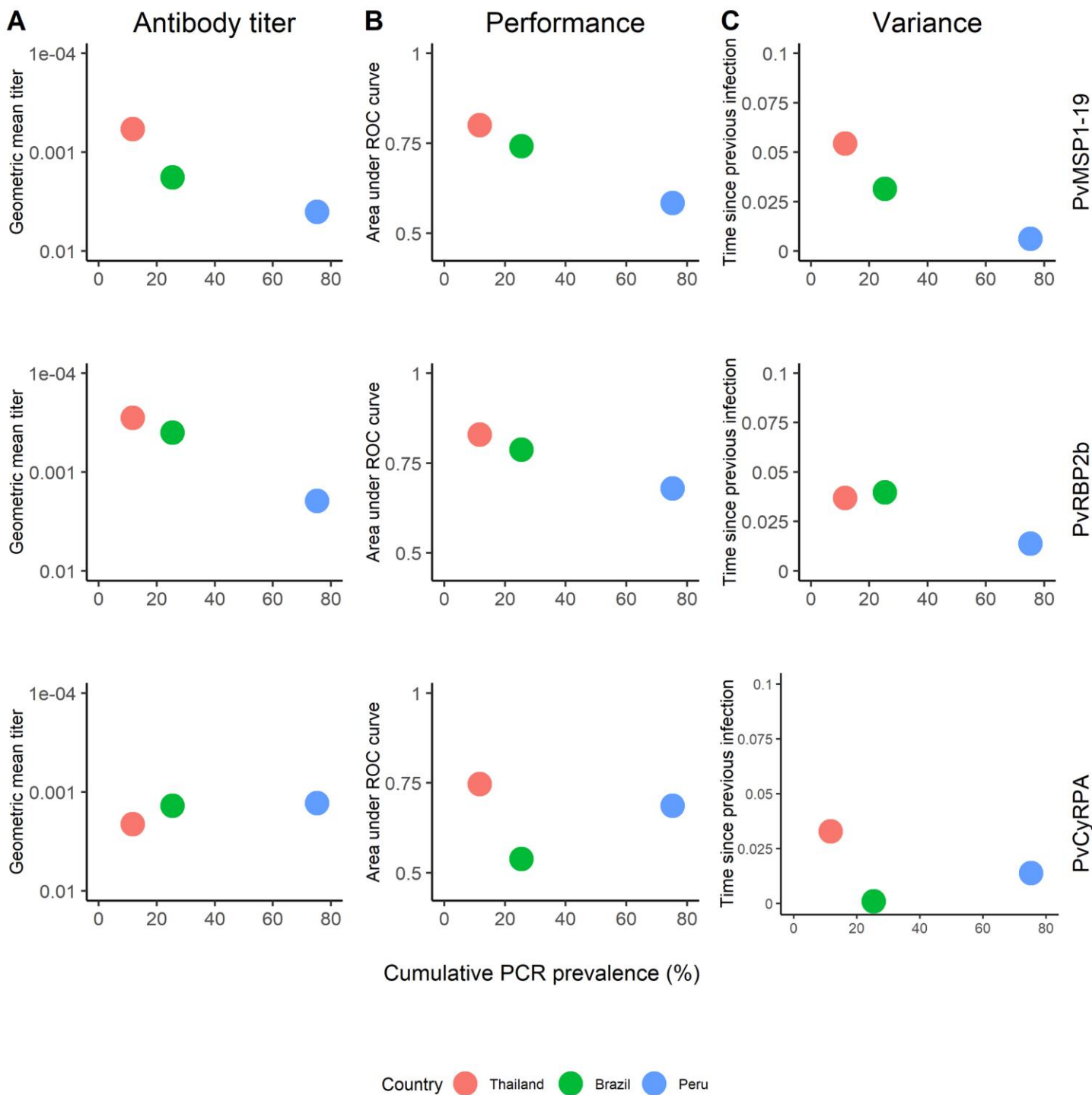


331

332 **Fig 5. Contribution of recent and lifetime exposure to the variance of antibody responses to PvMSP1₁₉, PvRBP2b and PvCyRPA across**
333 **the study sites.** Panels represent the variance estimated for each marker. The area of each colored bar is proportional to the variance
334 explained by known and unknown factors. Red bars: variance explained by individual's age. Blue bars: variance explained by number
335 of blood stage detections by qPCR during 13 months of follow up. Green bars: variance explained by time since previous infection
336 (days). Grey bars: unexplained variance.

337 We assessed the suitability of serological markers for identifying recent infection across the three transmission settings
338 (differentiated by cumulative PCR prevalence), by evaluating the geometric mean antibody levels to PvMSP1₁₉, PvRBP2b
339 and PvCyRPA, and their performance at classifying recent exposure (Fig 6). The geometric mean antibody titer to PvMSP1₁₉
340 and PvRBP2b increased with the cumulative PCR prevalence, but did not for PvCyRPA. The performance to detect recent
341 exposure (AUC value) of PvMSP1₁₉ and PvRBP2b was inversely correlated to cumulative PCR prevalence, but not for
342 PvCyRPA. The variance explained by the time since previous infection decreased with the cumulative PCR prevalence.

343 With each cohort contributing a single data point, it is challenging to assess the significance of these relationships.
344 Nonetheless, these findings lead us to conclude that these *P. vivax* SEMs are most suitable in low transmission settings
345 where population level antibody titers are low, and a high proportion of the total variation in measured antibody titer is
346 explained by the time since last *P. vivax* infection.



347

348

349

350

351

352

Fig 6. Association of cumulative PCR prevalence and antibody responses to PvMSP1₁₉, PvRBP2b and PvCyRPA. (A) Association of cumulative PCR prevalence and the geometric mean titer of antibody responses. (B) Association of cumulative PCR prevalence and the area under the ROC curve. (C) Association of cumulative PCR prevalence and the variance explained by the time since previous infection.

353

354

355

356 Discussion

357 The application of serology to malaria control and elimination programs has been hampered by the lack of standardized
358 techniques, well-developed antigenic markers, and validation in various transmission scenarios. With the potential for
359 malaria elimination in many endemic countries, a tool able to both identify pockets of residual transmission and certify
360 the malaria free status (in elimination settings) is urgently needed. Here, we evaluated the antibody responses to 34 novel
361 *Plasmodium vivax* antigens in participants from a longitudinal cohort implemented in a high transmission setting in Peru,
362 and made comparisons to data from low to moderate transmission settings in Thailand and Brazil [11].

363 In the three cohorts, individuals with blood-stage infections detected in the previous 9 months had significantly higher
364 antibody titers than those with older infections; however, the performance of SEM to classify recent exposure was lower
365 in Peru than in Thailand and in Brazil. The effect of malaria transmission on antibody responses is still poorly understood
366 [12], our data showed that antibody responses to serological markers of recent exposure are influenced by the
367 transmission intensity of the studied population. Whilst the geometric mean titer of most antibody responses was
368 positively correlated with the cumulative PCR prevalence of each study site, the differences of antibody titers between
369 positive PCR and negative PCR groups were highly significant in Thailand and Brazil but less pronounced in Peru, suggesting
370 a slow decay of antibody responses in currently non-infected people in high transmission settings. This is also evidenced
371 by the comparatively high antibody responses in Peruvians with an absence of blood-stage infections during one year of
372 follow-up. Furthermore, our results supported the fact that the acquisition rate of antibody responses is faster in high
373 transmission intensity sites, a phenomenon previously described. For example, King *et al.* showed that the antibody
374 response repertoire to *P. vivax* and *P. falciparum* antigens was broader with corresponding higher antibody levels in
375 subjects residing in high vs low transmission conditions [27]. Anti-malaria antibodies are mostly short-lived [28], but their
376 longevity is antigen specific [29] and may vary according to the background immunity and transmission intensity of the
377 studied population [30, 31]. In the cases of *P. vivax* Merozoite Surface Protein-1 (PvMSP1), antibody responses can last
378 up-to 30 years in sites where there has been sufficient levels of past exposure [32]. The antibody longevity is maintained

379 by memory B cells that upon re-exposure rapidly proliferate and differentiate into antibody secretory cells, greatly
380 boosting antibody levels [33]. In settings of low transmission, *P. vivax* infections appear to induce long-lasting B cell
381 memory but with corresponding relatively short-lived antibody responses [9, 10], although long-lived antibody responses
382 have also been reported [19]. In high transmission settings both memory and antibody responses appear to be long-lived.
383 A plausible explanation of the high antibody levels in the Peruvian cohort is that frequent new infections and relapses
384 would boost the antibody response baseline in the Peruvian population and that would result in a slow decay of these
385 responses [34]. In light of these broad associations between transmission intensity and natural acquisition of immunity,
386 we thus hypothesize that the differential performance of SEMs in the three study sites are likely due to the differences in
387 malaria transmission intensity. In Thailand and Brazil, where the prevalence is low, it is likely that the immune repertoire
388 is smaller and antibody responses are more short-lived. In Peru, the high antibody titers in the cohort individuals suggests
389 a consistently high exposure to *P. vivax*, which is expected to elicit a broad repertoire of long-lived antibodies.

390 In our study, antibody titers increased with individuals' age. There are two possible explanations. Antibody levels may
391 increase with age reflecting the cumulative nature of the immune response to *P. vivax*, and highlighting age as a surrogate
392 marker of life-time exposure. This relationship has been exploited to assess malaria transmission intensity in endemic
393 settings through modelling seroconversion rates, which are closely correlated with the entomological inoculation rate [12,
394 35]. On the other hand, the association of antibody responses and age may also reflect the epidemiological characteristics
395 of each population. The transmission of *P. vivax* in Thailand is mostly related to forest jobs in adults [19], whereas in Brazil
396 and Peru, the transmission is both peri-domestic and work-related [36, 37]. Our linear regression model showed that the
397 time since previous infection and the intensity of exposure in the last year were important drivers of the antibody response
398 to the top markers, PvRBP2b and PvMSP1₁₉, in Thailand and Brazil, whereas the cumulative exposure, as indicated by
399 individuals' age, explained most of the variance in antibody responses in Peru. In a previous study on the baseline of the
400 Peruvian cohort, Rosas-Aguirre *et al.* reported the association of antibody responses to PvMSP10 with *P. vivax* infections
401 in the previous 6 months and individual's age [38]. PvMSP10 was not included in our panel of SEMs. Our results however
402 confirm the previous finding of a strong influence of age on the performance of PvMSP10 as a marker of recent exposure

403 to *P. vivax*. Thus, the previous life-time exposure resulting from sustained transmission would influence SEMs performance
404 in high-transmission settings.

405 Besides previous life-time exposure, the immunogenicity of markers and their interplay with transmission intensity were
406 factors that affected the SEM performance. For example, the levels of antibody responses to PvRBP2b were positively
407 correlated with the number of blood-stage detections and time since previous infection in the three cohorts, indicating
408 that multiple antigen exposure is needed in order to boost an antibody response, and thus showcasing the moderate
409 immunogenicity of this antigen. PvRBP2b belongs to PvRBP family of membrane proteins involved in the irreversible
410 adhesion to reticulocytes [39]. Reports on naturally acquired immunity against PvRBP2b have shown that antibody
411 responses correlated with age, infection status and clinical protection [25, 26, 40]. Previous reports have shown that
412 antibodies responses against other members of the PvRBP family (i.e. PvRBP1a, PvRBP2a, PvRBP2c and PvRBP2-P2) also
413 correlated with intensity of exposure and increased at a slower rate than antibodies against highly immunogenic antigens
414 such as anti-PvDBPII [41] or PvCSP [22]. Recently, longitudinal studies have provided estimates of the longevity of antibody
415 response against PvRBP2b, estimating a mean half-life of ~ 3.8 months in cohorts from Thailand and Brazil [11], indicating
416 the moderate longevity of antibodies even in low transmission settings. Importantly, Longley *et al.* showed that the
417 antibody response to PvRBP2b had low reactivity in the malaria-naïve negative control group, which likely also has a strong
418 impact on classification performance [11]. These characteristics make anti-PvRBP2b antibodies the best performing SEMs
419 for classifying recent exposure in all three cohorts.

420 The use of highly immunogenic antigens such as PvMSP1₁₉ in serological tools has been advised in areas of low
421 transmission, where the long-term persistence of antibody levels may be suitable for estimating changes in transmission
422 intensity [12]. Lowly immunogenic markers with shorter half-life antibodies like PvCyRPA would be suitable for estimating
423 the time of the last infection in high endemicity scenarios. Our antigen panel consists of constructs whose antibody
424 responses longevity spanned up to 6 months in the absence of detectable recurrent infections in longitudinal cohorts in
425 two low transmission sites [31] and whose performance has been validated to detect recent exposure in the context of
426 low transmission intensity [11]. Our new findings suggest that the reactivity to these markers may not necessarily reflect
427 recent exposure in high-transmission scenarios like Peru, and that the constant, long-term exposure to *P. vivax* may result

428 in the long-lived IgG profiles in the absence of ongoing *P. vivax* infection in that cohort. Measurement of antibodies in
429 longitudinal samples from the Peruvian cohort in the future would confirm our results and shed light on the antibody
430 kinetics to *P. vivax* in a higher transmission scenario.

431 There are a number of potential applications for SEMs in malaria control and elimination programs. At a population level,
432 SEMs can be useful to identify pockets of residual transmission in geographic regions with heterogeneous or focalized
433 transmission and measure the impact of interventions [42-44]. These use cases can be applied in contexts of medium to
434 very low transmission levels. At an individual level, SEMs could be implemented in serological test and treat (PvSeroTAT)
435 strategies for preventative treatment of *P. vivax* with Primaquine or Tafenoquine in elimination campaigns [11]. Such an
436 intervention could reduce *P. vivax* cases with efficacy similar to mass drug administration (MDA), but with the benefit of
437 lower rates of overtreatment.

438 Finally, our study highlights the importance of an in-depth immunological dissection of the antibody signatures in diverse
439 transmission contexts of *P. vivax*. Such an exploration will allow us to understand the antibody kinetics in a context of
440 ongoing transmission and to select suitable markers of recent exposure in high transmission settings. Field studies have
441 shown that IgG subclass profiles to *P. falciparum* [45] and *P. vivax* [46-48] differed among malaria antigens and that the
442 subclass predominance is influenced by age and increasing exposure to infection. High IgG1 and IgG3 levels have been
443 associated with long-term exposure to *P. vivax* [40, 48]. To improve performance of SEMs, further information could
444 potentially be gained by testing IgG subclass responses and their ability to discriminate recent from distant exposure to *P.*
445 *vivax* in areas with history of high past transmission.

446 In summary, we have shown that the antibody responses to SEMs reflect exposure in the previous 9 months in areas of
447 low transmission, whereas the responses will mirror a combination of both recent and cumulative exposure in areas of
448 high transmission. By combining both highly and less immunogenic antigens, our panel is able to detect recent exposure
449 in low transmission or pre-elimination settings, providing a suitable tool for population-level surveillance.

450

451 **Author contributions**

452 M.T.W., R.J.L., D.G., and I.M. designed the study. W.M., M.L., J.S., A.LL- C., M.G.G., J.M.V., and D.G. conducted the cohort
453 studies. J.R. performed molecular diagnosis and antibody measurements. J.B. performed antibody measurements. J.R.,
454 R.J.L., and M.W. conducted data management and analysis. J.R., M.T.W., and I.M. wrote the manuscript.

456 **Acknowledgments**

457 We acknowledge the field teams that contributed to sample collection and qPCR assays, including Carlos Fernandez-
458 Miñope, Katherine Alcedo, Jhonatan Alarcon-Baldeon, Juan Jose Contreras-Mancilla. We thank Wai-Hong Tham, Eizo
459 Takashima, Takafumi Tsuboi, Matthias Harbers, Chetan Chitnis and Julie Healer for kindly provide the proteins used in
460 this study. We acknowledge Connie Li-Wai-Suen for writing the R script to convert MFI to RAU.

462 **Funding**

463 This work has been supported by FIND with funding from the Australian and British governments. This work was made
464 possible through Victorian State Government Operational Infrastructure Support and Australian Government National
465 Health and Medical Research Council (NHMRC) Independent Research Institute Infrastructure Support Scheme. Brazilian
466 team was partly funded by Fundação de Amparo à Pesquisa do Estado do Amazonas-FAPEAM (PAPAC 005/2019 and Pró-
467 Estado). Cohort samples were derived from field studies in Peru originally funded by Amazonian International Center of
468 Excellence for Malaria Research (ICEMR) supported by the National Institutes of Health-National Institute of Allergy and
469 Infectious Diseases (NIH-NIAID) U19AI089681 to J.M.V. (<https://www.niaid.nih.gov>); M.G.G is supported by Training Grant
470 5D43TW007120 (<https://www.fic.nih.gov>). J.R. is supported by the Pasteur - Paris University (PPU) International PhD
471 Program. R.J.L. received the Page Betheras Award from WEHI to provide funding for technical support for this project
472 during parental leave. R.J.L is supported by a NHMRC Early Career Investigator Fellowship (1173210). M.L. and W.M. are

473 CNPq fellows. I.M. is supported by an NHMRC Senior Research Fellowship (1043345). The funders had no role in study
474 design, data collection and analysis, decision to publish, or preparation of the manuscript.

475

476 References

- 477 1. White NJ, Imwong M. Relapse. *Adv Parasitol.* 2012;80:113-50.
- 478 2. Mueller I, Galinski MR, Baird JK, Carlton JM, Kochar DK, Alonso PL, et al. Key gaps in the knowledge of *Plasmodium*
479 *vivax*, a neglected human malaria parasite. *Lancet Infect Dis.* 2009;9(9):555-66.
- 480 3. Robinson LJ, Wampfler R, Betuela I, Karl S, White MT, Li Wai Suen CS, et al. Strategies for understanding and
481 reducing the *Plasmodium vivax* and *Plasmodium ovale* hypnozoite reservoir in Papua New Guinean children: a randomised
482 placebo-controlled trial and mathematical model. *PLoS Med.* 2015;12(10):e1001891.
- 483 4. Anstey NM, Douglas NM, Poespoprodjo JR, Price RN. *Plasmodium vivax*: clinical spectrum, risk factors and
484 pathogenesis. *Adv Parasitol.* 2012;80:151-201.
- 485 5. Cheng Q, Cunningham J, Gatton ML. Systematic review of sub-microscopic *P. vivax* infections: prevalence and
486 determining factors. *PLoS Negl Trop Dis.* 2015;9(1):e3413.
- 487 6. Lin E, Kiniboro B, Gray L, Dobbie S, Robinson L, Laumaea A, et al. Differential patterns of infection and disease with
488 *P. falciparum* and *P. vivax* in young Papua New Guinean children. *PLoS One.* 2010;5(2):e9047.
- 489 7. Mueller I, Galinski MR, Tsuboi T, Arevalo-Herrera M, Collins WE, King CL. Natural acquisition of immunity to
490 *Plasmodium vivax*: epidemiological observations and potential targets. *Adv Parasitol.* 2013;81:77-131.
- 491 8. Wampfler R, Mwingira F, Javati S, Robinson L, Betuela I, Siba P, et al. Strategies for detection of *Plasmodium*
492 species gametocytes. *PLoS One.* 2013;8(9):e76316.
- 493 9. Kochayoo P, Changrob S, Wangriatisak K, Lee SK, Chootong P, Han ET. The persistence of naturally acquired
494 antibodies and memory B cells specific to rhoptry proteins of *Plasmodium vivax* in patients from areas of low malaria
495 transmission. *Malar J.* 2019;18(1):382.
- 496 10. Wipasa J, Suphavitai C, Okell LC, Cook J, Corran PH, Thaikla K, et al. Long-lived antibody and B Cell memory
497 responses to the human malaria parasites, *Plasmodium falciparum* and *Plasmodium vivax*. *PLoS Pathog.*
498 2010;6(2):e1000770.
- 499 11. Longley RJ, White MT, Takashima E, Brewster J, Morita M, Harbers M, et al. Development and validation of
500 serological markers for detecting recent *Plasmodium vivax* infection. *Nat Med.* 2020;26(5):741-9.
- 501 12. Drakeley CJ, Corran PH, Coleman PG, Tongren JE, McDonald SL, Carneiro I, et al. Estimating medium- and long-
502 term trends in malaria transmission by using serological markers of malaria exposure. *Proc Natl Acad Sci U S A.*
503 2005;102(14):5108-13.
- 504 13. Drakeley C, Cook J. Chapter 5. Potential contribution of sero-epidemiological analysis for monitoring malaria
505 control and elimination: historical and current perspectives. *Adv Parasitol.* 2009;69:299-352.
- 506 14. Rosas-Aguirre A, Guzman-Guzman M, Gamboa D, Chuquiyauri R, Ramirez R, Manrique P, et al. Micro-
507 heterogeneity of malaria transmission in the Peruvian Amazon: a baseline assessment underlying a population-based
508 cohort study. *Malar J.* 2017;16(1):312.
- 509 15. WHO. World Malaria Report 2017. Geneva Switzerland: World Health Organization. 2017.
- 510 16. MINSA. Ministerio de Salud del Perú: Boletín epidemiológico del Perú 2016 SE 52. 2016;25(52):1178 – 86.
- 511 17. Rosas-Aguirre A, Gamboa D, Manrique P, Conn JE, Moreno M, Lescano AG, et al. Epidemiology of *Plasmodium*
512 *vivax* Malaria in Peru. *Am J Trop Med Hyg.* 2016;95(6 Suppl):133-44.
- 513 18. Carrasco-Escobar G, Miranda-Alban J, Fernandez-Minope C, Brouwer KC, Torres K, Calderon M, et al. High
514 prevalence of very-low *Plasmodium falciparum* and *Plasmodium vivax* parasitaemia carriers in the Peruvian Amazon:
515 insights into local and occupational mobility-related transmission. *Malar J.* 2017;16(1):415.

- 516 19. Longley RJ, Reyes-Sandoval A, Montoya-Diaz E, Dunachie S, Kumpitak C, Nguitragool W, et al. Acquisition and
517 Longevity of Antibodies to Plasmodium vivax Preerythrocytic Antigens in Western Thailand. *Clin Vaccine Immunol.*
518 2016;23(2):117-24.
- 519 20. Monteiro W, Karl S, al. e. Prevalence and force of Plasmodium vivax and Plasmodium falciparum blood stage
520 infection and associated clinical malaria burden in the Brazilian Amazon. *PLoS One.* 2020;(in press).
- 521 21. Rosanas-Urgell A, Mueller D, Betuela I, Barnadas C, Iga J, Zimmerman PA, et al. Comparison of diagnostic methods
522 for the detection and quantification of the four sympatric Plasmodium species in field samples from Papua New Guinea.
523 *Malar J.* 2010;9:361.
- 524 22. Longley RJ, Franca CT, White MT, Kumpitak C, Sa-Angchai P, Gruszczyk J, et al. Asymptomatic Plasmodium vivax
525 infections induce robust IgG responses to multiple blood-stage proteins in a low-transmission region of western Thailand.
526 *Malar J.* 2017;16(1):178.
- 527 23. Fox J, Weisberg S. An {R} Companion to Applied Regression. Second Edition Thousand Oaks CA: Sage. 2011.
- 528 24. Grömping U. Relative Importance for Linear Regression in R: The Package relaimpo. *Journal of Statistical Software.*
529 2006;17(1):1-27.
- 530 25. He WQ, Karl S, White MT, Nguitragool W, Monteiro W, Kuehn A, et al. Antibodies to Plasmodium vivax reticulocyte
531 binding protein 2b are associated with protection against P. vivax malaria in populations living in low malaria transmission
532 regions of Brazil and Thailand. *PLoS Negl Trop Dis.* 2019;13(8):e0007596.
- 533 26. Franca CT, White MT, He WQ, Hostetler JB, Brewster J, Frato G, et al. Identification of highly-protective
534 combinations of Plasmodium vivax recombinant proteins for vaccine development. *Elife.* 2017;6.
- 535 27. King CL, Davies DH, Felgner P, Baum E, Jain A, Randall A, et al. Biosignatures of Exposure/Transmission and
536 Immunity. *Am J Trop Med Hyg.* 2015;93(3 Suppl):16-27.
- 537 28. Ndungu FM, Olotu A, Mwacharo J, Nyonda M, Apfeld J, Mramba LK, et al. Memory B cells are a more reliable
538 archive for historical antimalarial responses than plasma antibodies in no-longer exposed children. *Proc Natl Acad Sci U S*
539 *A.* 2012;109(21):8247-52.
- 540 29. Akpogheneta OJ, Duah NO, Tetteh KK, Dunyo S, Lanar DE, Pinder M, et al. Duration of naturally acquired antibody
541 responses to blood-stage Plasmodium falciparum is age dependent and antigen specific. *Infect Immun.* 2008;76(4):1748-
542 55.
- 543 30. Elliott SR, Fowkes FJ, Richards JS, Reiling L, Drew DR, Beeson JG. Research priorities for the development and
544 implementation of serological tools for malaria surveillance. *F1000Prime Rep.* 2014;6:100.
- 545 31. Longley RJ, White MT, Takashima E, Morita M, Kanoi BN, Li Wai Suen CSN, et al. Naturally acquired antibody
546 responses to more than 300 Plasmodium vivax proteins in three geographic regions. *PLoS Negl Trop Dis.*
547 2017;11(9):e0005888.
- 548 32. Lim KJ, Park JW, Yeom JS, Lee YH, Yoo SB, Oh JH, et al. Humoral responses against the C-terminal region of
549 merozoite surface protein 1 can be remembered for more than 30 years in persons exposed to Plasmodium vivax. *Parasitol*
550 *Res.* 2004;92(5):384-9.
- 551 33. Good KL, Avery DT, Tangye SG. Resting human memory B cells are intrinsically programmed for enhanced survival
552 and responsiveness to diverse stimuli compared to naive B cells. *J Immunol.* 2009;182(2):890-901.
- 553 34. Chuquiyauri R, Molina DM, Moss EL, Wang R, Gardner MJ, Brouwer KC, et al. Genome-Scale Protein Microarray
554 Comparison of Human Antibody Responses in Plasmodium vivax Relapse and Reinfection. *Am J Trop Med Hyg.*
555 2015;93(4):801-9.
- 556 35. Stewart L, Gosling R, Griffin J, Gesase S, Campo J, Hashim R, et al. Rapid assessment of malaria transmission using
557 age-specific sero-conversion rates. *PLoS One.* 2009;4(6):e6083.
- 558 36. Lana R, Nekkab N, Siqueira A, Peterka C, Marchesini P, Lacerda M, et al. The top 1% – quantifying the unequal
559 distribution of malaria: the case of Brazil. 2020:Forthcoming.
- 560 37. Rosas-Aguirre A, Guzman-Guzman M, Chuquiyauri R, Moreno M, Manrique P, Ramirez R, et al. Temporal and
561 micro-spatial heterogeneity in transmission dynamics of co-endemic Plasmodium vivax and Plasmodium falciparum in two
562 rural cohort populations in the Peruvian Amazon. *J Infect Dis.* 2020.
- 563 38. Rosas-Aguirre A, Patra KP, Calderon M, Torres K, Gamboa D, Arocutipa E, et al. Anti-MSP-10 IgG indicates recent
564 exposure to Plasmodium vivax infection in the Peruvian Amazon. *JCI Insight.* 2020;5(1).
- 565 39. Galinski MR, Medina CC, Ingravallo P, Barnwell JW. A reticulocyte-binding protein complex of Plasmodium vivax
566 merozoites. *Cell.* 1992;69(7):1213-26.

- 567 40. Franca CT, He WQ, Gruszczyk J, Lim NT, Lin E, Kiniboro B, et al. Plasmodium vivax Reticulocyte Binding Proteins
568 Are Key Targets of Naturally Acquired Immunity in Young Papua New Guinean Children. *PLoS Negl Trop Dis*.
569 2016;10(9):e0005014.
- 570 41. Tran TM, Oliveira-Ferreira J, Moreno A, Santos F, Yazdani SS, Chitnis CE, et al. Comparison of IgG reactivities to
571 Plasmodium vivax merozoite invasion antigens in a Brazilian Amazon population. *Am J Trop Med Hyg*. 2005;73(2):244-55.
- 572 42. Greenhouse B, Daily J, Guinovart C, Goncalves B, Beeson J, Bell D, et al. Priority use cases for antibody-detecting
573 assays of recent malaria exposure as tools to achieve and sustain malaria elimination. *Gates Open Res*. 2019;3:131.
- 574 43. Rosas-Aguirre A, Speybroeck N, Llanos-Cuentas A, Rosanas-Urgell A, Carrasco-Escobar G, Rodriguez H, et al.
575 Hotspots of Malaria Transmission in the Peruvian Amazon: Rapid Assessment through a Parasitological and Serological
576 Survey. *PLoS One*. 2015;10(9):e0137458.
- 577 44. Surendra H, Supargiyono, Ahmad RA, Kusumasari RA, Rahayujati TB, Damayanti SY, et al. Using health facility-
578 based serological surveillance to predict receptive areas at risk of malaria outbreaks in elimination areas. *BMC Med*.
579 2020;18(1):9.
- 580 45. Tongren JE, Drakeley CJ, McDonald SL, Reyburn HG, Manjurano A, Nkya WM, et al. Target antigen, age, and
581 duration of antigen exposure independently regulate immunoglobulin G subclass switching in malaria. *Infect Immun*.
582 2006;74(1):257-64.
- 583 46. Fernandez-Becerra C, Sanz S, Brucet M, Stanistic DI, Alves FP, Camargo EP, et al. Naturally-acquired humoral
584 immune responses against the N- and C-termini of the Plasmodium vivax MSP1 protein in endemic regions of Brazil and
585 Papua New Guinea using a multiplex assay. *Malar J*. 2010;9:29.
- 586 47. He WQ, Shakri AR, Bhardwaj R, Franca CT, Stanistic DI, Healer J, et al. Antibody responses to Plasmodium vivax
587 Duffy binding and Erythrocyte binding proteins predict risk of infection and are associated with protection from clinical
588 Malaria. *PLoS Negl Trop Dis*. 2019;13(2):e0006987.
- 589 48. Morais CG, Soares IS, Carvalho LH, Fontes CJ, Krettli AU, Braga EM. Antibodies to Plasmodium vivax apical
590 membrane antigen 1: persistence and correlation with malaria transmission intensity. *Am J Trop Med Hyg*. 2006;75(4):582-
591 7.

592

593 **Supporting information**

594 **S1 File.** Contains Figures I – VIII and Tables I-IX

595 Fig I. Study design for the retrospective analysis of 13 months of follow-up.

596 Fig II. Distribution of antibody responses to 34 Serological markers of exposure in the Peruvian communities of Cahuide (CAH) and
597 Lupuna (LUP).

598 Fig III. Pearson correlation between antibody responses to 34 Serological markers of exposure in the Peruvian cohort.

599 Fig IV. Association between antibody responses to 34 P. vivax antigens and time since previous P. vivax blood-stage infection.

600 Fig V. Association between antibody responses to 34 P. vivax antigens and number of blood stage infections detected by qPCR.

601 Fig VI. Association between antibody responses to 34 P. vivax antigens and age.

602 Fig VII. Association between antibody responses to top five P. vivax antigens and time since last P. falciparum blood-stage infections.

603 Fig VIII. Association of diagnostic performance of antibody responses in different timeframes with the distribution of time since the
604 previous infection.

605 Table I. Association of antibody responses with current P. vivax infection in the Peruvian cohort.

606 Table II. Multivariate linear regression model explaining the antibody levels in the Peruvian cohort.

- 607 Table III. Epidemiologic characteristics of the study sites and participants.
- 608 Table IV. Characteristic of evaluated constructs.
- 609 Table V. Top antibody responses for classifying recent infections.
- 610 Table VI. Geometric mean titer of 34 SEM across the study sites.
- 611 Table VII. Correlation between antibody titers and age.
- 612 Table VIII. Overall antibody response and time since previous infection.
- 613 Table IX. Overall antibody response and number of detected blood- stage infections.