

1 **Accelerated aortic stiffness is associated with brain structure, perfusion and cognition in the**  
2 **Whitehall II Imaging Sub-study**

3  
4 Sana Suri<sup>1,2\*</sup> DPhil; Scott T. Chiesa<sup>3\*</sup> PhD, Enikő Zsoldos<sup>1,2</sup> DPhil, Clare E. Mackay<sup>1,2</sup> PhD, Nicola  
5 Filippini<sup>1,2</sup> DPhil, Ludovica Griffanti<sup>1,2</sup> PhD, Abda Mahmood<sup>1</sup>, PhD; Archana Singh-Manoux<sup>4,5</sup> PhD,  
6 Martin J Shipley<sup>4</sup> MSc, Eric J Brunner<sup>4</sup> PhD, Mika Kivimäki<sup>4</sup> FMedSci PhD, John E. Deanfield<sup>+3</sup>  
7 FRCP, Klaus P. Ebmeier<sup>+1</sup> MD

8

9 *\*Joint first authorship*

10 *+Joint last authorship*

11 <sup>1</sup>Department of Psychiatry, Warneford Hospital, University of Oxford, OX3 7JX, Oxford, United  
12 Kingdom

13 <sup>2</sup>Wellcome Centre for Integrative Neuroimaging, University of Oxford, OX3 7JX, Oxford, United  
14 Kingdom

15 <sup>3</sup>Institute of Cardiovascular Science, University College London, EC1A 4NP, London, United  
16 Kingdom

17 <sup>4</sup>Department of Epidemiology and Public Health, University College London, WC1E 6BT London,  
18 United Kingdom

19 <sup>5</sup>Inserm U1153, Epidemiology of Ageing and Neurodegenerative diseases, Université de Paris, 75010  
20 Paris, France

21 \*Corresponding author: Dr Sana Suri, [sana.suri@psych.ox.ac.uk](mailto:sana.suri@psych.ox.ac.uk), +44(0)1865 283829

22 **Word count:** 2985

23 **Keywords:** aortic stiffness, pulse wave velocity, ageing, brain magnetic resonance imaging, diffusion  
24 imaging, cerebral perfusion

25 **NOTE:** This preprint reports new research that has not been certified by peer review and should not be used to guide clinical practice.

26 **Abstract**

27

28 **Background:** Aortic stiffness is closely linked with cardiovascular diseases, but recent studies  
29 suggest that it is also a risk factor for cognitive decline and dementia. However, the brain changes  
30 underlying this risk are unclear. We examined whether aortic stiffening in the transition from mid to  
31 late-life affects brain structure and cognition.

32 **Methods and Findings:** Aortic pulse wave velocity was measured in 2007-09 (Phase 9) and at a 4-  
33 year follow-up in 2012-13 (Phase 11) in the Whitehall II Imaging Sub-study cohort. Between 2012-  
34 2016 (Imaging Phase), participants received a multi-modal 3T brain magnetic resonance imaging  
35 (MRI) scans and cognitive tests. Participants were selected if they had no clinical diagnosis of  
36 dementia and no gross brain structural abnormalities. Voxel-based analyses were used to assess grey  
37 matter volume, white matter microstructure (fractional anisotropy and diffusivity), cerebral blood  
38 flow, and white matter lesions. Cognitive outcomes were performance on verbal memory, semantic  
39 fluency, working memory and executive function tests. Of 544 participants, 445 (81.8%) were men.  
40 The mean (SD) age was 63.9 (5.2) years at the baseline Phase 9 examination, 67.9 (5.3) years at Phase  
41 11 and 69.8 (5.2) years at the Imaging Phase. Voxel-based analysis revealed that accelerated aortic  
42 stiffening in mid-to-late life was associated with poor white matter integrity, viz. lower fractional  
43 anisotropy in 4.2% of white matter and higher radial diffusivity in 6.7% of white matter, including the  
44 corpus callosum, corona radiata, superior longitudinal fasciculus and corticospinal tracts. Accelerated  
45 aortic stiffening was also related to lower cerebral perfusion in 1.1% of grey matter including the  
46 parietal, frontal, and occipital cortices. No associations with grey matter volume or white matter  
47 lesions were observed. Further, higher baseline aortic stiffness was associated with poor semantic  
48 fluency ( $B=-0.48$ , 95%CI -0.77 to -0.19,  $p<0.005$ ) and verbal learning outcomes ( $B=-0.36$ , 95%CI -  
49 0.60 to -0.13,  $p<0.005$ ).

50 **Conclusions:** Faster aortic stiffening in mid-to-late life is associated with poor brain white matter  
51 microstructural integrity and reduced cerebral perfusion, likely due to increased transmission of

52 pulsatile energy to the delicate cerebral microvasculature. Strategies to prevent arterial stiffening prior  
53 to this point may be required to offer cognitive benefit in older age.

54

## 55 **Introduction**

56 Nearly 50 million people currently live with dementia worldwide and this figure is expected to triple  
57 by 2050.[1] While the exact mechanisms underlying dementia are still poorly understood,  
58 accumulating evidence implicates a number of potentially modifiable risk factors linked to another  
59 global health burden, cardiovascular disease (CVD).[2] Timely prevention strategies targeting risk  
60 factors common to these diseases may therefore have a dual benefit in reducing two of the world's  
61 most prevalent causes of morbidity and mortality.

62 One established risk factor for CVD is disproportionate stiffening of the aorta.[3] Aortic stiffness  
63 refers to the loss of elasticity in the artery wall and occurs gradually with age.[4] Acceleration of this  
64 process can also compromise the artery's ability to dampen the pulsatile energy flowing from the  
65 heart to delicate target organs like the brain. Indeed, numerous studies have now demonstrated a  
66 relationship between aortic stiffness and accelerated cognitive decline, suggesting that this may also  
67 be an important risk factor for dementia ([5–8], for review see[9]). Less well understood, however, is  
68 the relationship of aortic stiffness with cerebrovascular and microstructural changes in the brain that  
69 may contribute to cognitive impairment and dementia.[10]

70 Some magnetic resonance imaging (MRI) studies have revealed a link between higher aortic stiffness  
71 and markers of vascular pathology in the brain such as white matter lesions (WMLs), lacunar infarcts,  
72 and microbleeds ([11,12], for review see[13]). However, most of these studies have visually  
73 dichotomized brain tissue into normal and abnormal, which lacks quantitative and spatial detail about  
74 the specific brain regions that may be most sensitive to damage. Very few studies have examined  
75 brain microstructural[14–16] or cortical perfusion[17] correlates of aortic stiffness at a voxel level.

76 Moreover, to our knowledge, no human study to date has investigated the potential impact that  
77 accelerated rates of arterial stiffening have on these measures. Arterial stiffening is commonly  
78 observed in the transition from mid to late life; a time when a combination of ageing and long-term  
79 CVD risk exposure interact to negatively influence distensibility of major arteries. Recent work in  
80 animal models has strengthened claims that this link between excess pulsatility and cerebral outcomes  
81 may be causal.[18] De Montgolfier *et al.* showed that surgically induced rapid increases in pulsatile  
82 pressure in mice results in endothelial dysfunction and hypoperfusion within the brain's fragile  
83 microcirculation, all accompanied by significant declines in cognitive function.[18]

84 Using repeat measures of carotid-femoral pulse wave velocity (PWV) measured as part of the long-  
85 running Whitehall II study, we assessed changes in arterial stiffness over 4 years, and investigated  
86 their relationship with multi-modal brain MRI and cognitive outcomes in a subset of 544 randomly-  
87 selected participants in the Whitehall II Imaging Sub-Study.

## 88 **Methods**

### 89 ***Sample selection***

90 Participants were drawn from the Whitehall II study, a cohort of 10,308 British Civil Servants  
91 followed since 1985.[19] Arterial stiffness was measured using carotid-femoral pulse wave velocity  
92 (PWV), at Phase 9 (2007-2009, n=4347) and again in Phase 11 (2012-2013, n=4344).[20] Following  
93 Phase 11, 775 randomly selected participants received multi-modal brain MRI scans and cognitive  
94 tests at the Wellcome Centre for Integrative Neuroimaging, University of Oxford, as part of the  
95 Whitehall II Imaging Sub-study (2012-2016, protocol described previously[21]). Sample selection is  
96 in S1 Figure. The study was approved by the University of Oxford Medical Sciences Interdivisional  
97 Research Ethics Committee and written informed consent was obtained from all participants.

98

### 99 ***Pulse Wave Velocity***

100 The protocol for measuring PWV in the Whitehall II study has been described previously.[6] Briefly,  
101 aortic PWV was assessed between carotid and femoral sites using applanation tonometry

102 (SphygmoCor; Atcor Medical, Australia). At each phase, two measurements of PWV were acquired  
103 from each participant, and a third measurement was taken if the difference between the first two  
104 measurements was  $>0.5$  m/s. The average of the measurements at each phase was used in cross-  
105 sectional analyses. The change ( $\Delta$ PWV) was calculated as the difference between phases divided by  
106 time between visits (m/s/year), with positive values representing faster stiffening.

107

### 108 *Neuroimaging outcomes*

109 Detailed protocols for the acquisition and pre-processing of all scans have been described  
110 previously[21] and in the Supplementary Information (S3 Protocol). All images were processed using  
111 FMRIB Software Library (FSL) tools. Grey matter (GM) volumes were assessed using voxel-based  
112 morphometry analyses (FSL-VBM) on structural T1-weighted scans.[22] White matter lesions  
113 (WMLs) were quantified as hyperintensities on fluid-attenuated inversion recovery scans using the  
114 FSL-BIANCA tool.[23] Cerebral blood flow (CBF) was quantified as the rate of delivery of arterial  
115 blood to brain tissue (ml of blood per 100g of tissue per minute) using pseudocontinuous arterial spin  
116 labelling analysed with the FSL-BASIL toolkit.[24] White matter microstructure was assessed using  
117 diffusion tensor imaging (DTI) scans analysed with tract-based spatial statistics (FSL-TBSS).[25] DTI  
118 is sensitive to directional diffusion of water within the axon, which is unrestricted along the axon, but  
119 hindered perpendicularly due to the presence of the myelin sheath. Directionality and amount of water  
120 diffusion is quantified by DTI-derived metrics such as fractional anisotropy (FA), radial diffusivity  
121 (RD), axial diffusivity (AD) and mean diffusivity (MD).

122

123 Decreases in FA alongside increases in diffusivity are established and sensitive measures of WM  
124 damage in dementia.[26] Lower CBF and higher WMLs are also well-established surrogate  
125 neuroimaging end points for dementia.[27]

126

127 In addition to voxel-based analyses, we also examined summary measures of global brain physiology.  
128 For each subject, total GM and WML volumes were extracted using FSL-FAST and FSL-BIANCA,

129 respectively. These were normalised to total brain volume and expressed as GM% and WML%. Total  
130 FA and diffusivity metrics were extracted from the mean TBSS skeleton, and total CBF from the  
131 frontal, temporal, parietal and occipital lobes were extracted from native-space CBF maps using  
132 MNI152 masks.

133

134 Due to a scanner upgrade two-thirds of the way through the study, two MRI scanners were used: a 3T  
135 Siemens Magnetom Verio scanner with a 32-channel head coil (n=552, April 2012–December 2014)  
136 and a 3T Siemens Prisma Scanner with a 64-channel head-neck coil in the same centre (n=222, July  
137 2015–December 2016).[21] The scan parameters were identical or closely matched between scanners,  
138 and a scanner covariate was used in all analyses. CBF scans were acquired in a subset of 145  
139 participants who were all scanned on the Verio scanner.

140

#### 141 ***Cognitive outcomes***

142 We examined performance on seven cognitive domains; *semantic fluency*: number of animals named  
143 in one minute; *verbal learning*: number of words learned after 3 trials of the Hopkins Verbal Learning  
144 Test (HVLТ-R), *delayed verbal recall*: number of words recalled after a 30-minute delay on HVLТ-  
145 R; *working memory*: total score on the Digit Span Forward, Backward and Sequence tests; *executive*  
146 *function*: difference in time between Trail Making Test B and A, and digit substitution test (WAIS-  
147 IV); *global cognitive function*: Montreal Cognitive Assessment (MoCA).

148

#### 149 ***Covariates***

150 Covariates were selected *a priori* based on the literature, and included age, mean arterial pressure  
151 (MAP), body mass index (BMI) and anti-hypertensive treatment each reported at the respective phase  
152 (9 or 11), sex, total years of full-time education (reported at the MRI visit), socioeconomic status  
153 (grades 1-3 reported at Phase 7 in 2002-2004), number of years between repeat visits, and MRI  
154 scanner model. Additional covariates such as current smoking status (yes/no), current cardiovascular  
155 disease (yes/no), history of type 2 diabetes (yes/no) were tested in a stepwise forward linear

156 regression and as they did not significantly improve model fit they were not included in the final  
157 results described below to avoid overfitting.

### 158 *Statistical analysis*

159 Longitudinal change in PWV was analysed using linear mixed effects regression using the nlme  
160 package in R, with a continuous autoregressive moving-average correlation structure to consider  
161 correlations between repeated measures on the same individual. The intercepts and slopes were fitted  
162 as random effects.

163

164 Cross-subject voxel-wise multivariable regressions were performed separately on spatial maps of GM  
165 volume, white matter microstructure (FA, MD, RD and AD) and CBF (pre-processing detailed in the  
166 supplementary file, S3 Protocol). For each modality, the respective spatial maps for all subjects were  
167 concatenated into a 4D file. This was submitted to FSL-Randomise to perform a permutation-based  
168 nonparametric test with 5000 permutations, using the threshold-free cluster enhancement option.

169 Three general linear models (GLM) were run to assess the associations of Phase 9 PWV (Model 1),  
170  $\Delta$ PWV (Model 2) and Phase 11 PWV (Model 3) on the aforementioned MRI and cognitive outcomes.

171 All models were adjusted for covariates, and voxel-wise results are displayed at a significance

172 threshold of  $p < 0.05$  corrected for multiple comparisons across space.

173

174 Statistical analyses of MRI-derived variables were performed in R (Version 1.1.463). WML% and  
175 GM%, were used as dependent variables in multivariable linear regressions against Phase 9 (Model  
176 1),  $\Delta$ PWV (Model 2), and Phase 11 PWV (Model 3). Lobar CBF (frontal, temporal, parietal,  
177 occipital), WM metrics (global FA, MD, RD and AD), and the seven cognitive tests were used as  
178 dependent variables in separate multivariate GLMs to test for associations with Phase 9 PWV (Model  
179 1),  $\Delta$ PWV (Model 2), and Phase 11 (Model 3). Post-hoc univariate regressions were performed to  
180 assess contributions of the individual CBF, WM and cognitive measures. We assessed whether  
181 associations of PWV with cognition were mediated by brain MRI markers using a mediation analysis  
182 in PROCESSv3.4 for SPSS (2012-2019 by Andrew F. Hayes; data not shown). We also examined the

183 association of brain markers with cognitive performance using partial correlations adjusted for age,  
184 sex, years of education, scanner type, and socioeconomic status.

## 185 **Results**

186

### 187 *Participant characteristics*

188 Participant characteristics are in Tables 1 and 2; 81.8% of the participants were male, and 58.6%,  
189 38.4% and 2.9% of participants were categorised in socioeconomic grades 1, 2 and 3 respectively.  
190 There was a significant increase in PWV with time after adjusting for baseline age, sex and  
191 socioeconomic status ( $B=0.17$ , 95%CI 0.14 to 0.20,  $p<0.0001$ ). On average, PWV increased by  
192 0.2(0.4) m/s per year (S2 Figure).

193

### 194 *Association of PWV with brain microstructure*

195 Higher  $\Delta$ PWV was the strongest predictor of poor WM microstructure in covariate-adjusted  
196 multivariate GLMs with global FA, MD, RD, AD as dependent variables ( $p_{(\text{model})}=0.015$ , summary  
197 statistics in Table 3). Post-hoc linear regressions revealed that this effect was driven by associations of  
198 aortic stiffening with lower FA and higher RD (Table 3). Voxel-wise analyses demonstrated that  
199 associations with FA and RD were localised to 4.2% and 6.7% of white matter tracts respectively,  
200 covering the corpus callosum, fornix, left anterior thalamic radiation, superior corona radiata, and  
201 corticospinal tracts. Associations with RD were further distributed within the superior and inferior  
202 longitudinal fasciculus, posterior corona radiata, and bilateral external and internal capsule (Figure 1).  
203 While evidence of associations were also seen with *cross-sectional* PWV, these were less pronounced  
204 both with the extracted WM measures [Phase 11 PWV: ( $p_{(\text{model})}=0.019$ ); Phase 9 PWV: ( $p_{(\text{model})}=0.29$ )  
205 Table 3] and voxel-based analyses (data not shown). Neither cross-sectional nor longitudinal aortic  
206 PWV were associated with WML%, total GM% (Table 3) or GM volume assessed with voxel-wise  
207 analysis.

208



209 ***Association of PWV with cerebral perfusion***

210 Higher  $\Delta$ PWV was associated with lower total CBF in the frontal, parietal and occipital lobes (Table  
211 3). The voxel-wise analyses revealed most pronounced effects in the parietal, lateral occipital and  
212 cuneal cortex, occipital pole, frontal pole, and parts of the precuneus (Figure 1). *Cross-sectional* PWV  
213 at Phases 9 and 11 were not significantly associated with regional CBF in the voxel-wise analysis or  
214 using extracted mean lobar CBF (Table 3).

215

216 ***Association of PWV with cognitive performance***

217 Baseline PWV at Phase 9 was associated with lower overall cognitive performance at the MRI phase  
218 ( $p_{(\text{model})}=0.004$ ) in covariate-adjusted multivariate GLMs. Post-hoc linear regressions revealed that this  
219 association was driven by poorer performance on the semantic fluency and verbal learning tests  
220 (Table 3). In contrast, neither Phase 11 PWV ( $p_{(\text{model})}=0.37$ ) nor the rate of aortic stiffening ( $p_{(\text{model})}$   
221  $=0.70$ ) were associated with cognitive performance at the MRI visit (Table 3).

222

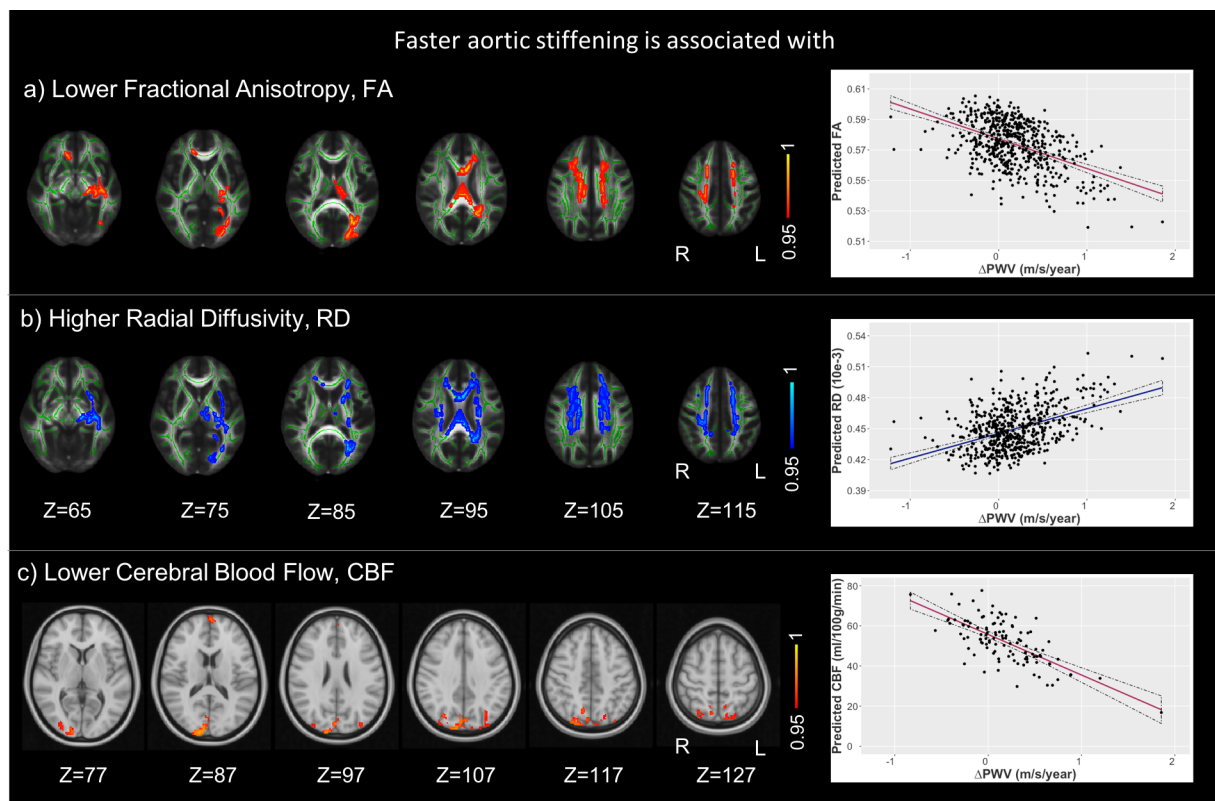
223 ***Association of cerebral measures and cognitive performance***

224 WM microstructure and CBF were associated with executive function and working memory (Table  
225 4). However, these brain measures did not mediate the aforementioned relationship between baseline  
226 PWV and semantic fluency and verbal learning.

227

228

229



230  
231

232 **Figure 1: Association of rate of aortic stiffening white matter microstructure and cerebral blood**  
233 **flow.** Faster aortic stiffening was associated with (A) lower fractional anisotropy (FA), (B) higher  
234 radial diffusivity (RD), and (C) lower cerebral blood flow (CBF). Six horizontal slices are displayed  
235 ranging with MNI coordinates ranging from Z=65 to Z=115 for FA, RD and Z=77 to Z=127 for CBF.  
236 The FA and RD clusters are overlaid on the study-specific mean FA skeleton (green) and the standard  
237 FMRIB58 FA image, and the CBF clusters are overlaid on the standard MNI152 brain. All results are  
238 thresholded at TFCE-corrected  $p < 0.05$  and are presented with a colour gradient for 1-p values. Scatter  
239 plots represent the estimated marginal means for predicted FA, RD and CBF extracted from the  
240 significant clusters, and are adjusted for covariates. Abbreviations: R, right; L, left

241

242 **Table 1:** Characteristics of the 544 participants at Phase 9 and Phase 11. Values represent mean  
 243 (standard deviation) or No. (%).  
 244

Sample Characteristics	Phase 9	Phase 11
	2007-2009	2012-2013
Age, years	63.9 (5.2)	68.0 (5.3)
Age range, years	55.6-77.4	59.8-81.8
Sex, %male (N)	81.8% (445/544)	
Pulse wave velocity m/s	8.1 (1.7)	8.8 (2.2)
Pulse wave velocity range m/s	4.7 -15.0	4.5 - 20.0
Systolic blood pressure, mmHg	122.5 (14.7)	125.2 (15.6)
Diastolic blood pressure, mmHg	70.6 (10.1)	70.4 (9.5)
Mean arterial pressure, mmHg	87.9 (11.0)	88.6 (10.7)
Body Mass Index, kg/m <sup>2</sup>	25.9 (3.6)	25.9 (3.6)
Anti-hypertensive treatment, No. (%)	139/544 (25.6%)	177/544 (32.5%)
Current smokers, No. (%)	29/540 (5.3%)	20/543 (3.7%)
Type II diabetes, No. (%)	8/544 (1.5%)	38/541 (7.0%)
Current CVD (angina, stroke or myocardial infarction), No. (%)	12/544 (2.2%)	16/544 (2.9%)

245

246

247

248 **Table 2:** Summary of the brain and cognitive outcome variables examined at the MRI Phase (2012-  
249 2016).

<b>OVERVIEW</b>	<b>Mean (SD)</b>
Age at MRI Phase, years	69.82 (5.23)
Years of education	14.23 (3.01)
Years from Phase 9 to MRI Phase	5.90 (1.39)
Years from Phase 11 to MRI Phase	1.82 (1.85)
Years from Phase 9 to Phase 11	4.08 (0.18)
<b>MRI OUTCOMES</b>	
Grey matter volume, % TBV	38.40 (1.87)
Global fractional anisotropy (x 10 <sup>-1</sup> )	4.80 (0.20)
Global mean diffusivity (x 10 <sup>-4</sup> )	6.85 (0.28)
Global radial diffusivity (x 10 <sup>-4</sup> )	4.86 (0.30)
Global axial diffusivity (x 10 <sup>-4</sup> )	10.82 (0.26)
White matter lesions, % TBV <sup>a</sup>	0.40 (0.26)
Frontal Lobe CBF (ml/100g/min) <sup>b</sup>	51.52 (12.22)
Parietal Lobe CBF (ml/100g/min) <sup>b</sup>	62.15 (15.44)
Occipital Lobe CBF (ml/100g/min) <sup>b</sup>	49.04 (18.74)
Temporal Lobe CBF (ml/100g/min) <sup>b</sup>	49.48 (10.21)
<b>COGNITIVE OUTCOMES<sup>c</sup></b>	
Verbal learning (short-term recall)	27.80 (4.37)
Delayed verbal recall	9.45 (2.51)
Semantic Fluency	22.49 (5.28)
Short term memory (Total Digit Span)	31.06 (5.47)
Executive Function (Trail Making Test B-A)	0.58 (0.44)
Executive Function (Digit Substitution)	63.41 (13.05)
Montreal Cognitive Assessment	27.38 (2.11)

250 Values represent mean (standard deviations). Grey matter volume and white matter lesions are  
251 expressed as % of total brain volume, TBV. Abbreviations: CBF, cerebral blood flow.

252 <sup>a</sup>Analysed white matter lesion subset (N=535)

253 <sup>b</sup>Analysed CBF subset (N=113)

254 <sup>c</sup>Analysed cognitive subset (N=539)

255

256 **Table 3:** Associations between PWV and brain and cognitive outcomes.

Outcome <sup>1</sup>	Model 1: Phase 9 PWV (m/s)		Model 2: ΔPWV (m/s/y)		Model 3: Phase 11 (m/s)	
	B [95% CI]	p	B [95% CI]	p	B [95% CI]	p
<b>Brain MRI Outcomes</b>						
Fractional Anisotropy <sup>2</sup>	-0.66 [-1.65, 0.32]	0.19	-4.16 [-8.19, -0.13]	<b>0.04</b>	-0.73 [-1.54, 0.08]	0.08
Mean Diffusivity <sup>2</sup>	0.91 [-0.45, 2.28]	0.19	4.05 [-1.55, 9.64]	0.16	0.79 [-0.33, 1.91]	0.17
Radial Diffusivity <sup>2</sup>	1.06 [-0.41, 2.53]	0.16	5.54 [-0.47, 11.55]	0.07	1.05 [-0.16, 2.25]	0.09
Axial Diffusivity <sup>2</sup>	0.61 [-0.70, 1.92]	0.36	1.06 [-4.32, 6.44]	0.70	0.28 [-0.79, 1.36]	0.61
Grey Matter %	-0.03 [-0.12, 0.06]	0.54	-0.06 [-0.44, 0.32]	0.75	-0.04 [-0.11, 0.04]	0.36
White Matter Lesions % <sup>3</sup>	-0.003 [-0.02, 0.01]	0.71	0.006 [-0.05, 0.06]	0.84	-0.003 [-0.01, 0.01]	0.60
Frontal CBF <sup>4</sup>	0.75 [-0.98, 2.5]	0.39	-6.99 [-13.64, -0.35]	<b>0.04</b>	-0.49 [-1.78, 0.80]	0.45
Temporal CBF <sup>4</sup>	0.74 [-0.66, 2.13]	0.30	-4.37 [-9.78, 1.05]	0.11	-0.02 [-1.08, 1.04]	0.98
Parietal CBF <sup>4</sup>	0.64 [-1.50, 2.78]	0.56	-8.91 [-17.12, -0.69]	<b>0.03</b>	-0.75 [-2.4, 0.85]	0.35
Occipital CBF <sup>4</sup>	0.69 [-1.84, 3.21]	0.59	-10.16 [-19.88, -0.44]	<b>0.04</b>	-1.04 [-2.91, 0.82]	0.27
<b>Cognitive Outcomes<sup>5</sup></b>						
Semantic Fluency	-0.48 [-0.77, -0.19]	<b>0.001</b>	0.81 [-0.36, 1.97]	0.18	-0.14 [-0.38, 0.10]	0.24
Verbal Learning	-0.36 [-0.60, -0.13]	<b>0.003</b>	0.43 [-0.54, 1.39]	0.39	-0.10 [-0.30, 0.09]	0.29
Delayed Verbal Recall	-0.11 [-0.25, 0.03]	0.12	0.20 [-0.36, 0.77]	0.48	-0.003 [-0.12, 0.11]	0.97
Working Memory (Digit Span)	-0.03 [-0.33, 0.27]	0.86	-0.17 [-1.40, 1.07]	0.79	-0.08 [-0.33, 0.17]	0.53
Executive Function (Trail Making)	-0.003 [-0.03, 0.02]	0.79	-0.0 [-0.12, 0.07]	0.62	-0.005 [-0.03, 0.02]	0.62
Executive Function (Digit Substitution)	-0.33 [-1.03, 0.37]	0.36	1.41 [-1.46, 4.28]	0.34	-0.08 [-0.66, 0.50]	0.79
Global Cognition (MOCA)	-0.14 [-0.26, -0.02]	<b>0.02</b>	-0.15 [-0.62, 0.32]	0.54	-0.09 [-0.19, 0.006]	0.07

---

<sup>1</sup>Aforementioned covariates were used in each model. In Model 2, Phase 9 PWV and years from P11 to MRI were also added to examine the unique contribution of rate of stiffening (regardless of baseline).

<sup>2</sup>FA: B [95% CI] x 10<sup>-3</sup> and MD, RD, AD: B [ 95% CI] x 10<sup>-6</sup>

<sup>3</sup>Analysed white matter lesions subset, N=535

<sup>4</sup>Analysed CBF subset, N=113

<sup>5</sup>Analysed cognitive subset, N=539

257

258

259 **Table 4:** Partial correlations of cognitive function with PWV-associated brain MRI outcomes,  
 260 correcting for age, sex, years of education, socio-economic status and scanner model.  
 261

	<b>Fractional Anisotropy<sup>1</sup></b> <b>(r, p)</b>	<b>Mean Diffusivity<sup>1</sup></b> <b>(r, p)</b>	<b>Radial Diffusivity<sup>1</sup></b> <b>(r, p)</b>	<b>Total Cerebral Blood Flow<sup>2</sup></b> <b>(r, p)</b>
<b>Semantic Fluency</b>	0.09, 0.05	-0.05, 0.23	-0.07, 0.13	-0.07, 0.46
<b>Verbal Learning</b>	0.08, 0.07	-0.05, 0.26	-0.06, 0.17	-0.02, 0.84
<b>Delayed Verbal Recall</b>	0.08, 0.06	-0.06, 0.18	-0.07, 0.10	0.01, 0.91
<b>Working Memory (Digit Span)</b>	<b>0.13, 0.002</b>	<b>-0.11, 0.01</b>	<b>-0.12, 0.006</b>	0.11, 0.27
<b>Executive Function (Trail Making)</b>	-0.09, 0.04	0.07, 0.11	0.08, 0.07	<b>-0.25, 0.008</b>
<b>Executive Function (Digit Substitution)</b>	<b>0.14, 0.001</b>	<b>-0.11, 0.01</b>	<b>-0.13, 0.003</b>	0.15, 0.13
<b>Global Cognition (MOCA)</b>	0.08, 0.07	-0.06, 0.20	-0.07, 0.13	0.18, 0.07

262 <sup>1</sup>Analysed cognitive subset (N=539)

263 <sup>2</sup>Analysed CBF subset (N=113)

264  
 265  
 266

267

268  
269  
270  
271  
272  
273  
274  
275  
276  
277  
278  
279  
280  
281  
282  
283  
284  
285  
286  
287  
288  
289  
290  
291  
292  
293  
294

## Discussion

In one of the largest studies to-date relating mid-life PWV changes to extensive cerebral phenotyping and cognitive outcomes, we show that an increased rate of arterial stiffening is associated with lower white matter microstructural integrity and cerebral blood flow in older age. Furthermore, these associations were present in diffuse brain areas, suggesting that exposure to excess pulsatility may result in a widespread damaging effect on the fragile cerebral microstructure. Cognitive function at follow-up related more closely with baseline arterial stiffness rather than rate of arterial stiffening. Taken together, these findings suggest that although accelerated arterial stiffening in the transition to old age may negatively impact brain structure and function, long-term exposure to higher levels of arterial stiffness prior to this point may be the most important determinant for future cognitive ability.

Patients with Alzheimer’s disease and vascular dementia have higher levels of aortic stiffness relative to cognitively healthy adults, suggesting that arterial dysfunction may play a role in dementia.[28] Aortic stiffening is a hallmark of vascular ageing and may lead to a heightened state of oxidative and inflammatory damage within the cerebral tissues due to an increased penetrance of excess pulsatility into the fragile microcirculation of the brain.[9] These changes have been shown to disrupt endothelial cell function and the blood brain barrier in animal models, and have also been hypothesised to compromise cerebral perfusion and ultimately lead to neurodegeneration and cognitive impairment.[9] While previous studies have related cross-sectional measures of arterial stiffness to cognition, this is the first study to publish associations between progressive increases in aortic stiffening over a 4-year period and cerebral and cognitive outcomes in later life.

We report a number of novel findings. First, accelerated arterial stiffening was found to associate with WM microstructural decline within the corpus callosum, corona radiata, superior longitudinal fasciculus, cortico-spinal tracts and internal capsule. Observations of lower FA with a concomitantly higher RD within these tracts are suggestive of axonal degeneration and loss of myelin. Notably, these



295 tracts have recently been shown to be vulnerable to arterial stiffness in younger adults (~50 years old)  
296 from the Framingham Heart Study[15], as well as two smaller studies in older adults.[14,16] These  
297 tracts are supplied by the anterior and middle cerebral arteries and given that they are also  
298 compromised in Alzheimer's and vascular dementia[26] they may be potential markers of the role of  
299 arterial stiffening in dementia pathophysiology. In contrast to some other studies[11,12,15], however,  
300 we noted no associations of aortic stiffness with WMLs or GM volumes. It is possible that our cohort  
301 – which compared to the general UK population is relatively high-functioning with a healthier  
302 vascular profile[19] – had a relatively lower WML burden. Thus, changes in WM diffusion metrics  
303 (which have been noted to precede larger volumetric and pathological changes) may have been more  
304 sensitive to the underlying structural tissue alterations at a voxel level. Future studies examining  
305 longitudinal changes in GM atrophy or WML burden would be more informative than measures from  
306 a single time-point.

307  
308 Second, in addition to evidence of disruptions to WM structural integrity, we also noted significantly  
309 lower CBF in posterior cingulate, cuneal, frontal and occipital cortices. These results are in line with a  
310 recent cross-sectional study in individuals with mild cognitive impairment[17], and implicate brain  
311 areas typically affected by vascular ageing.[29] Similar to WM metrics, these effects were found to be  
312 5-7 times larger for rate of stiffening than cross-sectional PWV, suggesting that exposure to rapid  
313 increases in pulsatile stress may be particularly damaging to cerebral perfusion compared with more  
314 gradual changes over time.

315  
316 Third, we observed an inverse association between baseline PWV and semantic fluency and verbal  
317 learning. This supports data from this and other cohorts[6–8] which suggest a possible influence of  
318 arterial stiffness on these two domains that are preferentially impaired in Alzheimer's disease.[30] In  
319 addition, we found evidence of a weak association between aortic stiffness and poor performance on  
320 the MoCA, which is used to screen for amnesic mild cognitive impairment. These cognitive  
321 outcomes, however, were associated with baseline aortic stiffness alone, suggesting that long-term

322 exposure to arterial stiffness in early life may be the most important factor determining these  
323 cognitive abilities in older age. Thus, interventions to reduce exposure to risk factors earlier in life  
324 may be required to in order to offer maximal benefits to later-life cognition. However, our observation  
325 of an additional relationship between accelerated arterial stiffening after this point and further  
326 detrimental changes to WM structure and cerebral perfusion provides the first evidence of a potential  
327 mechanism underlying the continued increase in rate of cognitive decline, which has repeatedly been  
328 demonstrated in this and other cohorts during the transition into later life.[6,31]

329

330 This study has a number of strengths and limitations. This is one of the largest MRI cohorts with  
331 multi-modal brain imaging phenotyping, extensive cognitive testing, and longitudinal arterial stiffness  
332 measures. Moreover, arterial stiffness was measured six years prior to the MRI scan, starting at a  
333 mean age of 64 years when vascular risk has been demonstrated to contribute to dementia pathology.  
334 However, as with all cohort studies, it is not possible to infer causal associations between these  
335 exposures and outcomes. In addition, with this relatively well-educated and predominantly male  
336 cohort it is possible that we are underestimating the observed association between PWV and  
337 cognition. Nonetheless, as we have adjusted for sex and education in all our regression models, it is  
338 unlikely that these variables have significantly driven our results. Last, although we examined the role  
339 of longitudinal changes in PWV on prospective brain structure, we were limited by cross-sectional  
340 MRI measurements.

341

### 342 ***Conclusion***

343 We provide the first evidence of a relationship between accelerated aortic stiffening in mid to late-life  
344 and detrimental changes to cerebral white matter microstructural integrity and perfusion in later life.  
345 These findings suggest that diffusion and perfusion MRI may be sensitive markers of recent damage  
346 caused by aortic stiffening and could therefore be potentially relevant outcome measures in  
347 intervention studies. However, as measures of amnesic cognition were found to most closely relate to

348 baseline measures of stiffness, such interventions may need to be targeted earlier in life in order to  
349 offer maximal benefit for both vascular and cognitive health.

350

351

### Funding

352 The Whitehall II study is supported by the British Heart Foundation (RG/16/11/32334), UK Medical  
353 Research Council (K013351) and US National Institute on Aging (R01AG013196; R01AG034454;  
354 R01AG056477). The Whitehall II Imaging Sub-study was supported by the UK Medical Research  
355 Council (MRC) grants “Predicting MRI abnormalities with longitudinal data of the Whitehall II Sub-  
356 study” (G1001354; PI KPE; ClinicalTrials.gov Identifier: NCT03335696), and “Adult Determinants  
357 of Late Life Depression, Cognitive Decline and Physical Functioning - The Whitehall II Ageing  
358 Study” (MR/K013351/1; PI: MK). Working on this study was also supported by European  
359 Commission (Horizon 2020 grant “Lifebrain”, 732592; co-PI KPE), the HDH Wills 1965 Charitable  
360 Trust (1117747; PI KPE) and the UK National Institute of Health Research (NIHR) Oxford Health  
361 Biomedical Research Centre (BRC). The Wellcome Centre for Integrative Neuroimaging (WIN) is  
362 supported by core funding from the Wellcome Trust (203139/Z/16/Z). The authors report the  
363 following funding: **SS** (Alzheimer’s Society Research Fellowship (Grant Number 441)), **KPE** (UK  
364 Medical Research Council (G1001354, MR/K013351/), HDH Wills 1965 Charitable Trust (1117747),  
365 Alzheimer Research UK (PPG2012A-5) and the European Commission (Horizon 2020 grant  
366 “Lifebrain”, 732592)), **MK** (UK MRC (MR/K013351/1, MR/R024227/1, MR/S011676/1), National  
367 Institute on Aging (NIH), US (R01AG056477), NordForsk (75021), Academy of Finland (311492),  
368 Helsinki Institute of Life Science Fellowship (H970)), **LG** (Monument Trust Discovery Award from  
369 Parkinson’s UK (J-1403) and the MRC Dementias Platform UK (MR/L023784/2)), **ASM** (NIH  
370 (R01AG056477, R01AG062553)). The views expressed are those of the authors and not necessarily  
371 those of the NHS, the NIHR or the Department of Health.

372

373

### Acknowledgements

374 We thank all the participating civil service departments; the British Occupational Health and Safety  
375 Agency; the British Council of Civil Service Unions; all participating civil servants in the Whitehall II  
376 Study; and all members of the Whitehall II Study team at University College London who so  
377 helpfully collaborated with us. The Whitehall II Study team comprises research scientists,  
378 statisticians, study coordinators, nurses, data managers, administrative assistants, and data entry staff,  
379 who make the study possible. Staff at the Wellcome Centre for Integrative Neuroimaging in Oxford,  
380 in particular research radiographers Michael Sanders, MSc, Jon Campbell, MMRTech, BcAppSc,  
381 Caroline Young, DCR(R), David Parker, BSc(Hons), who acquired the scans. Martin R. Turner, MA,  
382 MBBS, PhD, FRCP (Wellcome Centre for Integrative Neuroimaging, Oxford, United Kingdom), and  
383 his colleagues advised on incidental findings and taking over clinical responsibility for such  
384 participants. We are grateful to Professor Michael A. Chappell (DPhil) and Dr Thomas W. Okell  
385 (DPhil) for their advice on the FSL-BASIL tool for perfusion MRI analysis.  
386 No compensation was provided for staff contributions to this study.

387

388 **Conflicts of Interest:** Professor John E Deanfield reports provision of medical consulting for the  
389 Brain Protection Company Ltd. The remaining authors declare no conflicts of interest.

390

391 **Data availability:** The study follows Medical Research Council data sharing policies  
392 (<https://mrc.ukri.org/research/policies-and-guidance-for-researchers/data-sharing/>). In accordance  
393 with these guidelines, data from the Whitehall II Imaging Sub-study will be accessible via the  
394 Dementias Platform UK (<https://portal.dementiasplatform.uk/>). Data from the Whitehall II Study is  
395 available through formal request to the data sharing committee  
396 (<https://www.ucl.ac.uk/iehc/research/epidemiology-public-health/research/whitehallIII/data-sharing>).

397

398

## References

399

400 [1] Livingston G, Sommerlad A, Orgeta V, Costafreda SG, Huntley J, Ames D, et al. Dementia

- 401 prevention, intervention, and care. *Lancet* (London, England) 2017;0.  
402 [https://doi.org/10.1016/S0140-6736\(17\)31363-6](https://doi.org/10.1016/S0140-6736(17)31363-6).
- 403 [2] Alwan A. Global status report on noncommunicable diseases. 2010. [https://doi.org/978 92 4](https://doi.org/978_92_4_156422_9)  
404 156422 9.
- 405 [3] Mitchell GF, Hwang S-J, Vasani RS, Larson MG, Pencina MJ, Hamburg NM, et al. Arterial  
406 stiffness and cardiovascular events: the Framingham Heart Study. *Circulation* 2010;121:505–  
407 11. <https://doi.org/10.1161/CIRCULATIONAHA.109.886655>.
- 408 [4] Brunner EJ, Shipley MJ, Witte DR, Singh-Manoux A, Britton AR, Tabak AG, et al. Arterial  
409 stiffness, physical function, and functional limitation: The whitehall II study. *Hypertension*  
410 2011. <https://doi.org/10.1161/HYPERTENSIONAHA.110.168864>.
- 411 [5] Meyer ML, Palta P, Tanaka H, Deal JA, Wright J, Knopman DS, et al. Association of Central  
412 Arterial Stiffness and Pressure Pulsatility with Mild Cognitive Impairment and Dementia: The  
413 Atherosclerosis Risk in Communities Study-Neurocognitive Study (ARIC-NCS). *J*  
414 *Alzheimer's Dis* 2017. <https://doi.org/10.3233/JAD-161041>.
- 415 [6] Araghi M, Shipley MJ, Wilkinson IB, McEniery CM, Valencia-Hernández CA, Kivimaki M,  
416 et al. Association of aortic stiffness with cognitive decline: Whitehall II longitudinal cohort  
417 study. *Eur J Epidemiol* 2019. <https://doi.org/10.1007/s10654-019-00586-3>.
- 418 [7] Waldstein SR, Rice SC, Thayer JF, Najjar SS, Scuteri A, Zonderman AB. Pulse pressure and  
419 pulse wave velocity are related to cognitive decline in the Baltimore longitudinal study of  
420 aging. *Hypertension* 2008. <https://doi.org/10.1161/HYPERTENSIONAHA.107.093674>.
- 421 [8] Elias MF, Robbins MA, Budge MM, Abhayaratna WP, Dore GA, Elias PK. Arterial pulse  
422 wave velocity and cognition with advancing age. *Hypertension* 2009.  
423 <https://doi.org/10.1161/HYPERTENSIONAHA.108.126342>.
- 424 [9] Iulita MF, Noriega de la Colina A, Girouard H. Arterial stiffness, cognitive impairment and  
425 dementia: confounding factor or real risk? *J Neurochem* 2018;144:527–48.  
426 <https://doi.org/10.1111/jnc.14235>.
- 427 [10] Badji A, Sabra D, Bherer L, Cohen-Adad J, Girouard H, Gauthier CJ. Arterial stiffness and

- 428 brain integrity: A review of MRI findings. *Ageing Res Rev* 2019.
- 429 <https://doi.org/10.1016/j.arr.2019.05.001>.
- 430 [11] Henskens LHG, Kroon AA, Van Oostenbrugge RJ, Gronenschild EHBM, Fuss-Lejeune  
431 MMJJ, Hofman PAM, et al. Increased aortic pulse wave velocity is associated with silent  
432 cerebral small-vessel disease in hypertensive patients. *Hypertension* 2008.
- 433 <https://doi.org/10.1161/HYPERTENSIONAHA.108.119024>.
- 434 [12] Mitchell GF, Van Buchem MA, Sigurdsson S, Gotlib JD, Jonsdottir MK, Kjartansson L, et al.  
435 Arterial stiffness, pressure and flow pulsatility and brain structure and function: The Age,  
436 Gene/Environment Susceptibility-Reykjavik Study. *Brain* 2011.
- 437 <https://doi.org/10.1093/brain/awr253>.
- 438 [13] Singer J, Trollor JN, Baune BT, Sachdev PS, Smith E. Arterial stiffness, the brain and  
439 cognition: A systematic review. *Ageing Res Rev* 2014.
- 440 <https://doi.org/10.1016/j.arr.2014.02.002>.
- 441 [14] Tarumi T, de Jong DLK, Zhu DC, Tseng BY, Liu J, Hill C, et al. Central artery stiffness,  
442 baroreflex sensitivity, and brain white matter neuronal fiber integrity in older adults.  
443 *Neuroimage* 2015;110:162–70. <https://doi.org/10.1016/j.neuroimage.2015.01.041>.
- 444 [15] Maillard P, Mitchell GF, Himali JJ, Beiser A, Tsao CW, Pase MP, et al. Effects of Arterial  
445 Stiffness on Brain Integrity in Young Adults From the Framingham Heart Study. *Stroke*  
446 2016;47.
- 447 [16] Badji A, Noriega de la Colina A, Karakuzu A, Duval T, Desjardins-Crépeau L, Joubert S, et al.  
448 Arterial stiffness and white matter integrity in the elderly: A diffusion tensor and  
449 magnetization transfer imaging study. *Neuroimage* 2019;186:577–85.
- 450 <https://doi.org/10.1016/j.neuroimage.2018.11.015>.
- 451 [17] Jefferson AL, Cambronero FE, Liu D, Moore EE, Neal JE, Terry JG, et al. Higher Aortic  
452 Stiffness Is Related to Lower Cerebral Blood Flow and Preserved Cerebrovascular Reactivity  
453 in Older Adults. *Circulation* 2018;138:1951–62.
- 454 <https://doi.org/10.1161/CIRCULATIONAHA.118.032410>.

- 455 [18] de Montgolfier O, Pinçon A, Pouliot P, Gillis MA, Bishop J, Sled JG, et al. High Systolic  
456 Blood Pressure Induces Cerebral Microvascular Endothelial Dysfunction, Neurovascular Unit  
457 Damage, and Cognitive Decline in Mice. *Hypertens (Dallas, Tex 1979)* 2019.  
458 <https://doi.org/10.1161/HYPERTENSIONAHA.118.12048>.
- 459 [19] Marmot M, Brunner E. Cohort profile: The Whitehall II study. *Int J Epidemiol* 2005.  
460 <https://doi.org/10.1093/ije/dyh372>.
- 461 [20] Brunner EJ, Shipley MJ, Ahmadi-Abhari S, Tabak AG, McEniery CM, Wilkinson IB, et al.  
462 Adiposity, obesity, and arterial aging: longitudinal study of aortic stiffness in the Whitehall II  
463 cohort. *Hypertens (Dallas, Tex 1979)* 2015;66:294–300.  
464 <https://doi.org/10.1161/HYPERTENSIONAHA.115.05494>.
- 465 [21] Filippini N, Zsoldos E, Haapakoski R, Sexton CE, Mahmood A, Allan CL, et al. Study  
466 protocol: The Whitehall II imaging sub-study. *BMC Psychiatry* 2014;14:159.  
467 <https://doi.org/10.1186/1471-244X-14-159>.
- 468 [22] Douaud G, Smith S, Jenkinson M, Behrens T, Johansen-Berg H, Vickers J, et al. Anatomically  
469 related grey and white matter abnormalities in adolescent-onset schizophrenia. *Brain*  
470 2007;130:2375–86. <https://doi.org/10.1093/brain/awm184>.
- 471 [23] Griffanti L, Jenkinson M, Suri S, Zsoldos E, Mahmood A, Filippini N, et al. Classification and  
472 characterization of periventricular and deep white matter hyperintensities on MRI: A study in  
473 older adults. *Neuroimage* 2017. <https://doi.org/10.1016/j.neuroimage.2017.03.024>.
- 474 [24] Chappell MA, Groves AR, Whitcher B, Woolrich MW. Variational Bayesian inference for a  
475 nonlinear forward model. *IEEE Trans Signal Process* 2009.  
476 <https://doi.org/10.1109/TSP.2008.2005752>.
- 477 [25] Smith SM, Jenkinson M, Johansen-Berg H, Rueckert D, Nichols TE, Mackay CE, et al. Tract-  
478 based spatial statistics: voxelwise analysis of multi-subject diffusion data. *Neuroimage*  
479 2006;31:1487–505. <https://doi.org/10.1016/j.neuroimage.2006.02.024>.
- 480 [26] Suri S, Topiwala A, Mackay CE, Ebmeier KP, Filippini N. Using Structural and Diffusion  
481 Magnetic Resonance Imaging To Differentiate the Dementias. *Curr Neurol Neurosci Rep*

- 482 2014;14. <https://doi.org/10.1007/s11910-014-0475-3>.
- 483 [27] Iturria-Medina Y, Sotero RC, Toussaint PJ, Mateos-Pérez JM, Evans AC, Weiner MW, et al.  
484 Early role of vascular dysregulation on late-onset Alzheimer’s disease based on multifactorial  
485 data-driven analysis. *Nat Commun* 2016;7:11934. <https://doi.org/10.1038/ncomms11934>.
- 486 [28] Hanon O, Haulon S, Lenoir H, Seux ML, Rigaud AS, Safar M, et al. Relationship between  
487 arterial stiffness and cognitive function in elderly subjects with complaints of memory loss.  
488 *Stroke* 2005. <https://doi.org/10.1161/01.STR.0000181771.82518.1c>.
- 489 [29] Suri S, Topiwala A, Chappell MA, Okell TW, Zsoldos E, Singh-Manoux A, et al. Association  
490 of Midlife Cardiovascular Risk Profiles with Cerebral Perfusion at Older Ages. *JAMA Netw*  
491 *Open* 2019. <https://doi.org/10.1001/jamanetworkopen.2019.5776>.
- 492 [30] Lonie JA, Herrmann LL, Tierney KM, Donaghey C, O’Carroll R, Lee A, et al. Lexical and  
493 semantic fluency discrepancy scores in aMCI and early Alzheimer’s disease. *J Neuropsychol*  
494 2009. <https://doi.org/10.1348/174866408X289935>.
- 495 [31] Chiesa S, Masi S, Shipley M, Ellins E, Halcox J, Fraser A, et al. Abstract 11343: Accelerated  
496 Aortic Stiffening Relative to Carotid Stiffness is Associated With Cognitive Decline: The  
497 Whitehall II Study | *Circulation*. *Circ* 2019;140A11343 2019.  
498 [https://www.ahajournals.org/doi/abs/10.1161/circ.140.suppl\\_1.11343](https://www.ahajournals.org/doi/abs/10.1161/circ.140.suppl_1.11343) (accessed April 8, 2020).  
499  
500