

1 Title

2 Modeling impact and cost-effectiveness of gene drives for malaria elimination in the
3 Democratic Republic of the Congo

4 Authors

5 Nawaphan Metchanun^{1,*}, Christian Borgemeister¹, Gaston Amzati², Joachim von Braun¹,
6 Milen Nikolov³, Prashanth Selvaraj³, Jaline Gerardin^{3,4}

7 Affiliations

8 ¹Center for Development Research (ZEF), University of Bonn, Genscherallee 3, 53113
9 Bonn, Germany

10 ²Université Evangélique en Afrique, Bukavu, Bukavu, Congo – Kinshasa, Democratic
11 Republic of the Congo

12 ³Institute for Disease Modeling, 3150 139th Ave SE. Bellevue WA 98005, United States

13 ⁴Department of Preventive Medicine and Institute for Global Health, Northwestern
14 University, 710 N Lake Shore Drive, Chicago, IL 60611, United States

15 *To whom correspondence should be addressed.

16 Abstract

17 Malaria elimination will be challenging in countries that currently continue to bear high
18 malaria burden. Sex-ratio distorting gene drives, such as driving-Y, could play a role in an
19 integrated elimination strategy if they can effectively suppress vector populations. Using a
20 spatially explicit, agent-based model of malaria transmission in eight representative provinces of
21 the Democratic Republic of the Congo, we predict the impact and cost-effectiveness of
22 integrating driving-Y gene drive mosquitoes in malaria elimination strategies that include
23 existing interventions such as insecticide-treated nets and case management of symptomatic
24 malaria. Gene drive mosquitoes could eliminate malaria and were the most cost-effective
25 intervention overall if the drive component was highly effective with at least 95% X-shredding
26 and associated cost of deployment below 7.17 \$/int per person per year. Suppression gene drive
27 could be a cost-effective supplemental intervention for malaria elimination, but tight constraints
28 on drive effectiveness and cost ceilings may limit its feasibility.

29 Keywords

30 **malaria, gene drive, malaria elimination, high burden countries, Africa**

31 Introduction

32 Female *Anopheles* mosquitoes can transmit *Plasmodium* parasites that cause malaria, a
33 life-threatening infectious disease. The most commonly used vector control methods to prevent
34 mosquito bites are sleeping under insecticide-treated mosquito nets (ITNs) and spraying the
35 inside walls of a house with an insecticide (indoor residual spraying, IRS) (1). Treatment of
36 symptomatic malaria cases with artemisinin-based combination therapy (ACT) can effectively
37 manage malaria burden, although access to prompt and quality care remains a barrier.
38 Nevertheless, despite being preventable and treatable, with considerable control successes during
39 the last 20 years (2,3), malaria still has devastating impacts on health and livelihoods of people
40 around the world. The World Health Organization (WHO) estimates that about 3.7 billion people
41 are at risk of the disease in 97 predominantly tropical countries (3,4), even though billions of

NOTE: This preprint reports new research that has not been certified by peer review and should not be used to guide clinical practice.

42 dollars are spent annually on malaria control and elimination. Most malaria cases occur in sub-
43 Saharan Africa (SSA), accounting for 93% of total malaria cases worldwide (3,5). With 12% of
44 all cases in SSA, the Democratic Republic of the Congo (DRC) is the second highest-burden
45 country on the continent (3). Nearly all of the DRC's population lives in high malaria
46 transmission zones (6). Consequently, the disease remains one of the country's most serious
47 public health problems and is the number one cause of death (7,8).

48 Despite sustained malaria control, malaria incidence in the DRC has increased in the last
49 few years (3), and more than 40% of children who fell ill because of malaria did not receive
50 adequate care (3,9). Health system weaknesses and gaps in the coverage of core interventions
51 caused by financial and programmatic limitations are likely responsible for this recent rise in
52 cases (10), and elimination remains elusive. Sustained access to vector control has been a central
53 strategy in the DRC's complex operating environment, where challenges are compounded by
54 domestic political conflicts (8) and insufficient funding for malaria control (11). These
55 challenges emphasize the urgent necessity of developing new strategies for malaria control and
56 elimination for the DRC and beyond (3,10,12,13).

57 Transgenic mosquitoes carrying gene drives have recently been successfully developed in
58 the laboratory (14). Gene drive is a novel method that involves the inheritance of specific traits
59 from one generation to the next at rates higher than the 50% chance afforded through Mendelian
60 inheritance in heterozygotes, and gives certain genes a substantially higher or lower probability
61 of inheritance and thereby alters the frequency of such genes in the population. If given a gene
62 that could alter fertility or survival of the target species, this could alter its population size over a
63 few generations (15,16). Given rising resistance to existing insecticides and antimalarial drugs
64 (17–20), gene drive mosquitoes might hold great potential to accelerate and achieve lasting gains
65 in malaria control (14). The future of gene drives itself also depends on the economic aspect of
66 the technology compared with existing or future alternatives (21). This study assesses the cost-
67 effectiveness of gene drives together with conventional interventions by estimating Disability-
68 Adjusted Life Years (DALYs), DALYs averted, and cost-effectiveness of vector control methods
69 in the DRC.

70 Although gene drive has yet to pass the research and development stage, with driving-Y
71 gene drive has yet to be developed in the laboratory and lead candidates of gene drives are only
72 now in confined cage trials (22), public concern has been voiced over gene-related technologies.
73 Concerns on previously developed genetic controls, such as a genetically modified version of
74 *Aedes aegypti* for control of mosquito-transmitted arboviral diseases, has led to a debate on
75 whether the technology is suitable for a large-scale implementation (23). At the same time, proof
76 of efficacy presents a challenge, and informed decision-making on gene drive releases into the
77 wild will require additional information about potential effectiveness (14,24).

78 Disease modeling is a powerful tool that can complement laboratory findings and help
79 develop control strategies involving transgenic mosquitoes. The scientific community, including
80 the WHO and other policy groups, has increasingly recognized the importance of disease
81 modeling in guiding the development of gene drives and genetically modified organisms
82 (14,24,25). In this work, we explore the possible outcomes of applying gene drives as an
83 intervention for malaria control in representative SSA settings in combination with established
84 control programs - including ITNs and ACT distributions - while also evaluating the economic
85 cost of the resulting programs.

86 We model areas in eight provinces of the DRC by calibrating the transmission intensity
87 of the selected areas to malaria prevalence estimates from open data sources, accounting for

88 existing intervention coverage, and using local rainfall and temperature to drive seasonality in
89 vector abundance. In each selected province, we determine effective release strategies of gene
90 drive mosquitoes and define parameter regimes of a sex-ratio distorting suppressive gene drive
91 system, the driving-Y system, that result in elimination of malaria. In the driving-Y system, the
92 process of shredding the male's X chromosome results in male-biased progeny as the Y-
93 chromosome can still be carried through sperm unaffected to be driven to the next generation
94 (26). The system leads to fecundity reduction, the reduction of the potential to produce offspring,
95 that affects the egg batch size and has implications for the success of the driving system (27,28).
96 We simulate various intervention scenarios, including both conventional and gene drive
97 approaches to vector control, identify combinations of interventions that lead to malaria
98 elimination, and use modeled predictions of malaria burden to estimate DALYs averted and
99 compare the cost-effectiveness of driving-Y gene drives and existing vector control interventions
100 in the DRC.

101 **Results**

102 This study uses mathematical modeling to explore the potential role of driving-Y gene
103 drives for malaria control and elimination in the DRC. Models were parameterized to capture
104 malaria transmission in eight provinces that span the range of transmission seasonality and
105 intensity across the DRC. Releasing gene drive mosquitoes lowers parasite prevalence in all
106 modeled locations regardless of transmission intensity but is especially effective in higher-
107 transmission areas (Figure 2, Supplementary 1). Tripling the number of gene drive mosquitoes
108 released from 100 to 300 resulted in slightly lower wildtype vector fraction at similar parasite
109 prevalence reduction. In most locations, when compared to three releases of 100 gene drive
110 mosquitoes with one-year interval between each release, a single release of 300 gene drive
111 mosquitoes decreases wildtype vector fraction slightly faster, resulting in faster reduction of
112 parasite prevalence.

113 Successful drives were those with very efficient X-shredding at little to no cost in
114 fertility. Across settings, gene drive was most successful at reducing malaria prevalence when
115 the X-shredding rate ranged from 0.95 to 1.0, and fecundity reduction ranged from 0 to 0.15. The
116 similar sensitivity of mosquito population suppression to X-shredding efficiency could be
117 observed in previous studies using simpler models that studied mosquito population dynamics in
118 a homogeneous and constant environment (29,30) and an extended model that applied regional
119 heterogeneity to model malaria mosquitoes at national scale(15). In our study, the release of
120 drives reduced parasite prevalence, adult vectors, and wildtype vector fraction with a similar
121 trend across all sites (Figure 3, Supplementary 2). Our results also show that in areas where
122 parasite prevalence is high, more efficient drives are required. This hindrance of suppression
123 from possible higher productivity of wildtype population was also reported in previous modeling
124 work (15). Furthermore, our study compared the allowable parameter regimes between fecundity
125 reduction and X-shredding rate that had not been investigated in the previous studies (15,29,30).

126 The prevalence reduction aligns with the reduction in numbers of adult vectors. In high
127 transmission intensity sites, only drives with very high X-shredding rates (≥ 0.95) eliminated
128 malaria. In lower-transmission settings, drives with slightly lower X-shredding rates (0.9 to 0.95)
129 could also eliminate malaria. These parameter ranges resulted in elimination of the vector
130 population. At X-shredding rates where elimination was not observed, the impact on adult vector
131 population size was larger than the impact on parasite prevalence (Supplementary 3). For spatial
132 simulations, we selected a release strategy of a single release of 300 gene drive mosquitoes with
133 fecundity reduction between 0 and 0.15 and X-shredding rate between 0.9 and 1.0.

134 Under baseline conditions where interventions remain at constant levels, malaria
135 elimination could not be achieved unless the area has very low transmission intensity
136 (Supplementary 1), which is the case for North Kivu. In the lower transmission intensity areas,
137 malaria elimination could be achieved without gene drives when applying at least 80% coverage
138 of both ITNs and ACT. Regardless of transmission intensity, malaria elimination could be
139 achieved by applying gene drives with an X-shredding rate of 1.0 in all simulated settings. In the
140 spatial simulation framework, in which each site is modeled as 25 interconnected areas, and gene
141 drive mosquitoes are released only in the center of the region, we simulated a range of
142 intervention mixes, using the scenario modeled with current coverage of ITNs and ACT as the
143 baseline comparator. Malaria elimination was achievable without gene drive mosquitoes by
144 combining high coverage of both ITNs and ACT in Haut Katanga (80% coverage of both). In
145 contrast, elimination was not achievable in Kwango, Nord Ubangui, and Kasai Central at these
146 coverage levels, showing the need for new tools and echoing conclusions of the Lancet
147 Commission on Malaria Eradication (31) and WHO's Strategic Advisory Group on Malaria
148 Eradication (32). For all remaining selected areas with moderate to high parasite prevalence
149 (18.6%, 32.6%, and 60.7% in Bas Uele, Equateur, and Kinshasa provinces accordingly) a single
150 release of single species 300 driving-Y mosquitoes with an X-shredding rate of 1.0 and fecundity
151 reduction between 0.05 and 0.15 eliminated malaria within 15 years (Table 2). In the
152 simulations, we assumed all *P. falciparum* parasite inclusively transmitted by *An. gambiae* as
153 this single species dominates transmission in the DRC. However, results are generalizable to
154 other species or multi-species systems if multiple species-specific drives are released.

155 Reduction in transmission intensity was more sensitive to changes in the X-shredding rate
156 than fecundity reduction in the spatial setting when we compared the interventions with and
157 without gene drives to the baseline (Supplementary 3). With gene drive mosquitoes, the models
158 predicted that malaria elimination could be achieved within 7 years, and in many of these
159 scenarios, it was achieved 4 years post-release.

160 DALYs averted estimated from the model's outputs show similar trends as those of
161 WHO (Table S1 in Supplementary 6). Population-level cost-effectiveness estimates for
162 individual and combined interventions as costs per DALY averted in comparison with the
163 baseline scenario indicate that DALYs averted, rather than cost, is the main factor determining
164 cost-effectiveness across interventions (Table S2 in Supplementary 6). In scenarios with gene
165 drives that resulted in malaria elimination, the costs per DALYs averted are lower in areas where
166 the transmission intensity is initially higher as there were more DALYs to avert in the high
167 transmission area with comparable costs between scenarios and the costs decrease over time as
168 DALYs continue to be averted after elimination is achieved (Table 3).

169 The expansion paths of all sites show the order in which interventions would be selected
170 at different levels of resources available based on the incremental cost-effectiveness ratio
171 (ICER). ICER indicates additional costs required to avert each additional DALY by moving from
172 the lower-cost to the higher-cost intervention (33). It is calculated using average yearly costs and
173 yearly effectiveness (Table 3). Notable differences exist between the first and the following two
174 5-year intervals. The combination of ITNs and ACT at 95% coverage is the most cost-effective
175 intervention plan. However, it is not clear that 95% coverage of either ACT or ITNs as single
176 interventions or in combination would be achievable under the estimated costs, as even with high
177 expenditures, such levels of coverage have not yet been achieved (31,34). For the first interval,
178 the high-coverage combinations of ITNs and ACT are more cost-effective (Figure 4 and Table
179 S3 in Supplementary 6). In the following years (second and third intervals; Table S3 in
180 Supplementary 6), the unit cost of gene drive mosquitoes affects the priority of the strategies on

181 the expansion path as gene drives become more cost-effective compared to other interventions
182 (Figure 4).

183 The cost of gene drives as a single intervention in this study calculated in International
184 Dollar (\$int), a hypothetical unit of currency that has the same purchasing power that the U.S.
185 Dollar (US\$) has in the United States at a given point in time (33), ranged from 0.72 \$int to 7.17
186 \$int per person per year (Table 1). The calculation is based on the costs of gene drives per person
187 in previous studies (35,36). In case of combinations, the cost of gene drives was added to the cost
188 of other interventions. Using the lower bound price for the cost of gene-edited mosquitoes, gene
189 drive as a single intervention is the most cost-effective intervention overall as gene drive
190 mosquitoes with an X-shredding rate of 1.0 could eliminate malaria in all contexts and would be
191 the first choice where resources are limited. The effect, however, could be seen after elimination
192 was achieved from the second 5-year interval onwards. If malaria elimination cannot be
193 achieved, 95% ACT coverage is the most cost-effective intervention. The result suggests that, if
194 gene drives with 100% effective construct, an X-shredding rate of 1.0 and fecundity reduction of
195 0.05-0.15 are available, and their cost is comparable to other existing interventions, gene drives
196 would be the most cost-effective single intervention for malaria elimination. It is possible to
197 maintain existing interventions, especially ACT and ITNs, early on, while gene drives are
198 propagating. Once the mosquito population collapse, gene drives become more cost-effective
199 over a medium timeframe.

200 Discussion

201 This study uses mathematical modeling to describe the potential role of sex-ratio
202 distorting gene drive mosquitoes in malaria control across the transmission spectrum in the DRC,
203 an area where achieving effective control has historically been challenging. Our results suggest
204 that population suppression through gene drives could be an effective strategy for malaria
205 elimination in the DRC, either as a single intervention or in combination with other
206 interventions. To the best of our knowledge, this is the first study that models the
207 epidemiological impact and cost-effectiveness of gene drive mosquitoes for malaria elimination.
208 Previous studies involving gene drives for malaria control are limited in scope to laboratory
209 experiments (37–40), and the development and parameterization of mathematical models (15,41–
210 43). By extending previous modeling work (44) to approximately estimate the cost-effectiveness
211 of gene drive in representative settings, our work helps fill a gap in evidence about the
212 programmatic implementation of gene drives in the context of limited resources. The study not
213 only estimates the feasibility of gene drives in realistic malaria elimination scenarios, but also
214 evaluates cost of gene drives in comparison to other currently available interventions. This work
215 helps gauge the probabilities of success and possible outcomes of gene drives that are strictly
216 laboratory-contained or in the transition from the laboratory-based research to future field-based
217 research. In addition to the technical perspective provided in this study, further work is
218 necessary, including on the ethical perspective, i.e., standard research ethics, procedural ethics,
219 and participatory management of the technology (45), as a key component to implement this
220 technology in wild mosquito populations (46).

221 We found that the success of driving-Y gene drives in all areas regardless of vector
222 density highly depends on the ability of gene drives to shred the X chromosome. Though a
223 naturally occurring driving-Y chromosome that transmits >90% of male progeny can be found in
224 *Aedes* and *Culex* mosquitoes (47) and a CRISPR-based X-shredder can generate up to 100%
225 male bias in the laboratory (48,49), driving-Y gene drives have yet to be developed in the
226 laboratory. The adoption of a driving-Y strategy could be very challenging because it may be
227 difficult to achieve a perfect X-shredding rate at every development stage and during

228 implementation while overcoming the challenge of meiotic sex chromosome inactivation (45).
229 Moreover, possible resistant mutants that could convert wildtype genes and spread resistance,
230 especially in *An. gambiae* that cleavage resistant alleles, have already been observed (48).

231 Some sex-ratio distorting drives may not be comparable to Y drive or X shredders: for
232 example, if the female carries a drive that inactivates the reproduction of her male progeny.
233 However, the difference in mechanism by which sex ratio distortion is achieved may only lead to
234 differences in how quickly a drive establishes itself rather than downstream outcomes regarding
235 elimination, which is the focus of this study. Our finding that the drive must be highly effective
236 while mild fecundity costs are well-tolerated is likely generalizable to other suppression drives as
237 a whole. Our economic findings on the cost-effectiveness of drives are likely to be order-of-
238 magnitude similar for any highly effective suppression drive.

239 The success of suppressive gene drives such as driving-Y relies on mosquito population
240 size and allowing enough time for the drives to propagate in the mosquito population. Hence,
241 understanding interactions between existing vector control methods such as ITNs and IRS that
242 temporarily reduce the mosquito population (36,50) and gene drives will be necessary given that
243 vector control typically reduces mosquito populations. While this work focuses on the impact of
244 vector abundance, seasonality, and conventional vector control on gene drive outcomes, spatial
245 connectivity of mosquito populations and terrain heterogeneity will also have important
246 implications for gene drives success. Accurate capture of local variation in mosquito population
247 connectivity requires data on mosquito swarms and habitats at high resolution, mosquito
248 movement patterns, and mosquito species introgression. Some of these quantities are measurable
249 and known but most are unavailable for the DRC. A sensitivity analysis with vector migration
250 rate reduced by up to 3 orders of magnitude did not observe any change in elimination outcomes
251 (Supplementary 5).

252 While our models predicted that high coverage with ITNs and high access to treatment
253 with ACTs could eliminate malaria in lower-transmission settings, achieving such high
254 coverages of existing measures is not only extremely difficult but also comes with high
255 implementation and logistical costs (51,52). It may take much more investment in logistics and
256 systems to achieve 95% coverage of both ITNs and ACT than WHO's estimates applied in the
257 study (Table 1) (34). Even if theoretically achievable, it is highly improbable to sustain necessary
258 coverage levels in the complex operational environment of high disease burden countries like the
259 DRC (53,54). The costs estimated in the previous WHO study and applied in this work
260 considered program level, patient level and opportunity costs of currently available interventions
261 in the respective WHO subregion. These estimated costs might still underestimate the costs of
262 existing interventions given the difficulty for widespread distribution of interventions in the DRC
263 (55,56). Considering the potential percolation properties of gene drives, especially in areas where
264 mosquito populations are more connected, successful gene drives could plausibly be more cost-
265 effective if the cost is comparable to currently available interventions. However, this may not be
266 the case for areas with more sparsely connected mosquito populations and higher rates of gene
267 pool variability. Other cost components, e.g., surveillance, will also contribute to the cost of gene
268 drive once implemented.

269 Our model results show that tailoring the frequency of releases and the number of gene
270 drive mosquitoes to be released can make malaria elimination achievable within 5 years after a
271 single release of gene drive mosquitoes under certain conditions, including but not limited to no
272 importation of vectors or infections. The importation can sustain transmission and cause
273 resurgences (57). Therefore, future work is necessary to include importation of vectors and
274 infections to address the feasibility of release, as well as specify release schedules that are

275 operationally practical and technically necessary for intended deployment areas. Because of their
276 self-propagating and self-sustaining properties (26), gene drives would likely result in better
277 cost-effectiveness once implemented compared to other genetically engineered mosquitoes
278 previously developed (e.g., SIT). Nonetheless, the payoffs can be observed once malaria
279 elimination is reached - in most cases, after 5-year post-release. This waiting period can be
280 critical, given many life losses in the interim in the DRC's context. We based our cost-
281 effectiveness analysis on the unit costs of OX513A (58) and *Wolbachia* infected mosquitoes per
282 person (59) based on available information considering the limited cost data of genetic control
283 methods. We performed a systematic scoping review (Supplementary 7) to search for evidence in
284 costs of vector control approaches that involve the release of mosquitoes to modify vector
285 population and selected moderate lower and upper bound costs to give approximate values. The
286 rationale to apply the cost of gene drives per person protected instead of using the cost per gene
287 drive mosquitoes is to be conservative in approaching the cost estimation given the low number
288 of gene drive mosquitoes released in the models in this study.

289 The lower bound cost applied in this study is from a study on *Wolbachia* infected
290 mosquitoes, where costs came from expenses for the entire deployment (60). These estimates are
291 somewhat uncertain because future deployments would likely utilize less monitoring in an
292 operational public health program than in research and occur in settings of higher population
293 density. The self-maintaining of *Wolbachia* post-deployment would also reduce ongoing costs.
294 The upper bound cost is from studies on the Oxitec mosquito (59,61). One study source did not
295 explicitly state the cost components (59) and the other modeled estimated costs based on
296 preliminary estimates by Oxitec (61). Thus, different situations and contexts may naturally lead
297 to deviation in costs from these estimates. The use of Oxitec mosquitoes requires surveillance
298 efforts and recurrent re-licensing from the patent-owning company, which could further increase
299 costs. The lower and upper bound range in costs applied in the study reflects the reality in the
300 field, as the genetic control methods vary in cost components even though the methods were
301 developed to tackle the same disease (53). Future research should explore the cost components of
302 gene drives, especially development, and environmental costs, that may contribute to changes in
303 overall cost of this type of intervention. The changes in unit cost could affect the cost-
304 effectiveness of the method if the cost is too high. As we demonstrated in the incremental cost-
305 effectiveness ratio analysis, the cost-effectiveness is cost-sensitive. The gene drive approach
306 becomes less cost-effective compared to other strategies once its cost increases.

307 Gene drive technology is at an early stage of development and concerns over ethics,
308 safety and governance, as well as questions on affordability and cost-effectiveness, must be
309 addressed prior to implementation (62). For high malaria burden countries such as the DRC,
310 collaborating on testing, implementing and regulating new technologies like gene drives poses
311 challenges not only from within the country but also with other countries where different systems
312 of governance can further complicate the collaborations (63). Presently, many countries
313 including the DRC have insufficient resources to individually follow recommendations such as
314 extensive risk assessment and safety testing, and close monitoring after mosquito releases (62),
315 making it a challenge to enforce legislation required under the Cartagena Protocol (64). Further
316 research on risk assessments and step-wise implementations may help reduce uncertainties and
317 characterize potential risks and benefits that involve crucial ethical and social challenges (14,65).

318 This study demonstrated a modeling approach applied to *An. gambiae*, the predominant
319 malaria vector in Africa (66). The methodology developed here can be applied to other malaria-
320 transmitting mosquito species, and in settings with multiple major malaria vectors, releasing an
321 equally effective gene drive for each major vector would approximate the impact of targeting *An.*
322 *gambiae* in this study. The study identified key aspects of both gene drive technology and its

323 implementation that are fundamental for the technology to be a cost-effective component of a
324 malaria control program. Amid uncertainty about vector abundance and its behavior (67) and no
325 importation of infections and wildtype mosquitoes in the models, the study offers an evaluation
326 framework. The framework can be generalized to look at other gene drive approaches to
327 effectively plan gene drive strategies in malaria control, especially in other high burden countries
328 where parasite transmission intensity varies.

329 **Materials and methods**

330 The simulations in this study use Epidemiological MODeling software (EMOD) v2.18
331 (68), an agent-based, discrete-time, Monte Carlo simulator of malaria transmission with a vector
332 life cycle (69) and within-host parasite and immune dynamics (70,71). The modeling framework
333 combines an epidemiological model of *Plasmodium falciparum* transmission between individual
334 human agents and cohorts of mosquito agents distinguished by life stage, feeding and oviposition
335 stage, age, and genotype. The vector lifecycle consists of four stages: egg, larvae, immature
336 adults, and host-seeking adults, with temperature-dependent larval development, immature
337 maturation, and sporogony. Mosquito abundance is driven by availability of larval habitat, and
338 mosquito mortality is also affected by temperature and humidity. In humans, the model includes
339 asexual parasite and gametocyte densities, human immunity, effects of antimalarial drugs, and
340 symptomatic aspects of malaria, all of which have been previously calibrated to field data (72–
341 74). The model dynamically simulates vector-human and human-vector transmissions during
342 blood meals. Driving-Y is one of several gene drive strategies that can be simulated within
343 EMOD (75).

344 We selected eight representative provinces in the DRC for simulations (Figure 1) in both
345 non-spatial and spatial simulation frameworks. These approaches differ in whether or not vector
346 migration is included. The selection was based on malaria parasite prevalence data from the
347 DRC-Demographic and Health Survey (DRC-DHS) II 2013-14 (76,77), Malaria Atlas Project
348 (MAP) parasite prevalence estimates (78,79), and provincial stratification by climate zones,
349 endemicity, and urban/rural (13) to ensure that selected locations spanned the range of
350 transmission intensity across the entire DRC. For each site, simulations were run on a square
351 25x25 kilometer grid containing 25 nodes, 5 kilometers apart in both the non-spatial framework
352 where no vector migration was present across all nodes and the spatial framework where vector
353 migration was included. The model's outputs of malaria incidence and mortality were then used
354 to assess the cost-effectiveness of interventions.

355 We selected a central node for each simulated province by identifying a survey point
356 from the MAP parasite prevalence survey database (79) such that the 25-node simulation area
357 was entirely within the selected province (80) and used WorldPop population estimates (81) to
358 verify that the central node is populated. We applied various environmental covariates specified
359 to each study location based on geolocation. The covariates include climate (rainfall,
360 temperature, humidity) and seasonality averaged from monthly vectorial capacity. Since *An.*
361 *gambiae* mosquitoes, the only modeled mosquito species, breed primarily in temporary puddles
362 replenished by rainfall and drained through evaporation and infiltration (82), the simulations use
363 climate data to model the availability of larval habitat, which drives the number of vectors
364 throughout the year and thus biting intensity and transmission (69). Weather station and readings
365 by National Oceanic and Atmospheric Administration (NOAA) Global Surface Summary of the
366 Day (GSOD layer) were used for generating temperature and dewpoint anomalies. Baseline
367 monthly averages were generated using WorldClim 1.4 raster files in a grid format, 2.5 arc

368 minutes, and 30 arcseconds from WorldClim 1.4 (83). Rainfall files were generated by
369 downscaling RFE 2.0 Rainfall Estimates from NOAA's Climate Prediction Center (84). In both
370 non-spatial and spatial simulation frameworks, seasonality was enforced in the models by setting
371 the seasonality of larval habitat abundance such that monthly vectorial capacity matched the
372 average monthly vectorial capacity between 2000 to 2015 in two public datasets (v200906 and
373 Sheffield) (85). Daily temperature series was generated for each node as in (86).

374 We calibrated the overall larval habitat abundance by scaling the previously fitted
375 seasonality profile such that the model's parasite prevalence was consistent with the mean 2015
376 annual parasite prevalence of the location from MAP estimates (87). The annual means of
377 estimated parasite rate in children between the ages of two and ten (PfPR₂₋₁₀) from the year 2000
378 to 2015 were retrieved from MAP rasters (87) for all simulation nodes. For Haut Katanga, the
379 larval habitat multiplier was calibrated so that the average modeled parasite prevalence for years
380 2013-2015 was close to the MAP estimates for the same period. This adjustment was made due
381 to the site's very low parasite prevalence. We set each node's population to 1,000 individuals
382 and set birth and mortality rates to 36.3 per 1,000 people per year. The human population size
383 used is large enough to sustain low-transmission malaria but not unrealistically large for rural
384 areas. The simulation was run for 50 years to initialize population immunity.

385 In the final 10 years of the 50-year initialization period, the following interventions were
386 imposed (13):

387 ITNs: modeled ITN usage was based on % of children under the age of five (<5)
388 who slept under an ITN the previous night: 6%, 38%, and 56% in 2007, 2010, and 2013,
389 respectively.

390 Case management of symptomatic cases with Artemisinin-based Combination
391 Therapy (ACTs): 19% of uncomplicated malaria cases in all ages received treatment with
392 artemether-lumefantrine, based on the 2013 DHS survey reporting 19% of febrile
393 children under 5 receiving ACT.

394 Indoor Residual Spraying (IRS) was not included as less than 1% of the DRC
395 population was protected by IRS between 2007 and 2018 (3,88).

396 After the 50-year initialization, simulations were run for the next 15 years in both non-
397 spatial and spatial simulation frameworks. For ITNs used in the model, the initial strength of the
398 blocking effect on indoor mosquito fed on an individual with an ITN was 0.9, and the blocking
399 decayed at an exponential rate with mean 730 days. The blocking effect captures the physical
400 barrier of a bednet that prevents a mosquito from making contact with a human. The initial
401 strength of the killing effect was 0.6, conditionally on a successfully blocked feeding event. The
402 killing effect decayed at an exponential rate with mean 1,460 days. Killing and blocking
403 parameters were obtained from calibration to clinical trial data (71). The model assumed an
404 individual who received an ITN had 0.65 probability of using it on any given night, and ITNs
405 were redistributed every 3 years. For ACT, the parameters and values used in the model followed
406 (72).

407 Under the gene drive intervention, females that mate with a male carrying driving-Y will
408 have as offspring wildtype females and males carrying the driving-Y. The fraction of offspring
409 that are driving-Y males is then $0.5+0.5*(X\text{-shredding rate})$, and the fraction of offspring that are
410 females is $0.5-0.5*(X\text{-shredding rate})$. Only females that mate with a driving-Y male have their

411 fertility reduced, and the total egg batch size is reduced by the fecundity reduction for each
412 female that mates with a modified male (44). We varied the X-shredding rate from 0.5 to 1.0 and
413 fecundity reduction from 0 to 0.5 for single releases of 300 gene drive mosquitoes. We selected
414 parameter sets of X-shredding rates (0.9, 0.95, 1.0) and fecundity reductions (0.05, 0.1, 0.15) to
415 generate 9 combinations of driving-Y parameters that could eliminate malaria in the non-spatial
416 framework (Supplementary 2).

417 In the non-spatial simulation framework, we sampled the number of gene drive
418 mosquitoes released, frequency of release, and driving-Y parameters and evaluated whether
419 malaria was eliminated. The range of 100 – 300 mosquitoes to release provided a sufficient
420 number of gene drives to seed successfully in the majority of the simulations, avoiding stochastic
421 die outs that occur at lower release numbers. The release size is yet small enough compared to
422 most typical mosquito population sizes in km² areas, which provides an optimistic costing
423 assumption for successful gene drives. The driving-Y gene drive release strategy and parameters
424 were then applied to the spatial simulation framework, where we identified which interventions
425 or combinations of interventions could eliminate malaria in the selected locations. In all
426 simulated scenarios, the interventions, including gene drive mosquitoes, were applied on the first
427 day of year 0 unless indicated otherwise. A scenario was defined as reaching malaria elimination
428 when all-age parasite prevalence in the model is not detectable, i.e., drops to zero.

429 In the spatial simulation framework, vectors and humans could each move between
430 adjacent nodes less than 10 km apart with a rate inversely proportional to their distance. Adjacent
431 nodes include diagonally adjacent nodes. The vector migration rate ranged from 0.09 to 0.12 (9-
432 12% of female mosquitoes migrate out of a grid cell in any day). Each human individual went on
433 a multi-step journey along nodes and retrace back along their outbound path once they reached 5
434 nodes from their home node. On the outbound journey, the duration at each node was not set
435 explicitly but was determined by each node's migration rate that ranged from 0.09 to 0.12; on the
436 return journey, one timestep is spent at each node.

437 ITNs at 50% coverage and ACT at 19% coverage were applied uniformly across all
438 nodes in baseline scenarios, which were used as the main comparator against other scenarios.
439 Each of the individual ITNs and ACT (case management rate with ACT) and the combination of
440 ITNs and ACT was analyzed at three levels of coverage: 50%, 80%, and 95%, following the
441 selected coverage levels in (89). Scenarios that failed to eliminate malaria were re-simulated with
442 the addition of a single release of 300 driving-Y gene drive mosquitoes at the central node on the
443 first day of year 0.

444 We calculated Disability-Adjusted Life Years (DALY) from model outputs – population
445 by age group, uncomplicated clinical cases, severe cases, and deaths – at year 5, year 10, and
446 year 15 by giving equal weights to years of healthy life lost at young ages and older ages and
447 with 0% discount rate for future lost years of a healthy life. The standard life expectancy at the
448 age of death in years, and the DRC's country life table (90), and disability weights (35) of
449 moderate (0.051) and severe (0.133) were applied in DALYs calculation. DALYs averted
450 (91,92) were then calculated by comparing outcomes to those of baseline scenarios.

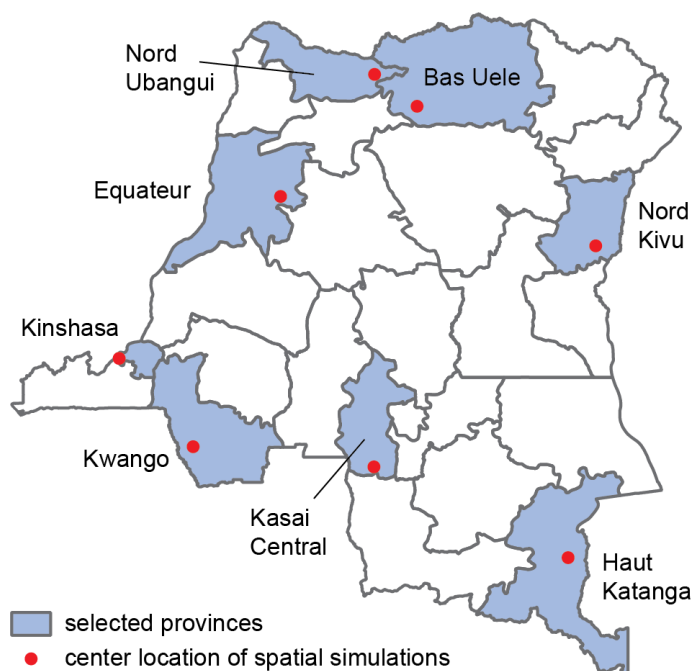
451 Costs of all interventions, including gene drive mosquitoes, were calculated standardized
452 to year 2000 without discount rates in order for the results to be comparable to those of previous
453 WHO milestone studies (89,93). Estimated costs are expressed in international dollars (\$int)
454 (33). Coverage-dependent costs per person per year of applying ITNs, ACT, and the combination
455 of ITNs and ACT were obtained from WHO-CHOICE database (94) and a previous WHO study

456 (93). For scenarios that included gene drive mosquito releases, we assumed the financial cost of
457 gene drives as a single intervention ranged from 0.72 \$int to 7.17 \$int per person per year (Table
458 1) based on costs of gene drives per person in previous studies (59–61) found in a systematic
459 scoping review (Supplementary 7). We applied the US government consumer price index (CPI)
460 (64) to adjust for inflation and the cumulative inflation rate to year 2000 values. Costs of gene
461 drive were added to the costs of any underlying intervention(s) also distributed (Table 1). Cost-
462 effectiveness was calculated for each 5-year interval beginning in 2015 by dividing average
463 yearly costs in \$int by average yearly effectiveness in DALYs averted (33). More cost-effective
464 interventions were identified by drawing a graph of an expansion path through ICER, which uses
465 the monetary value to compare the interventions (33), and selecting interventions with more
466 favorable cost-effectiveness. The expansion path is drawn to connect the choices of interventions
467 and present the order that the interventions would be chosen once more resources become
468 available, considering only cost-effectiveness. The additional cost required to avert each
469 additional DALY, ICER, is the slope of each expansion path (33).

470 **Figures and Tables**

471 **Figure 1** Locations of central nodes of the 25x25km simulation areas.

472 The table describes the main determinants and rural/urban classification of the areas, and Malaria Atlas
 473 Project (MAP) estimates of the 2015 parasite prevalence at the central nodes used in calibration in this
 474 study.



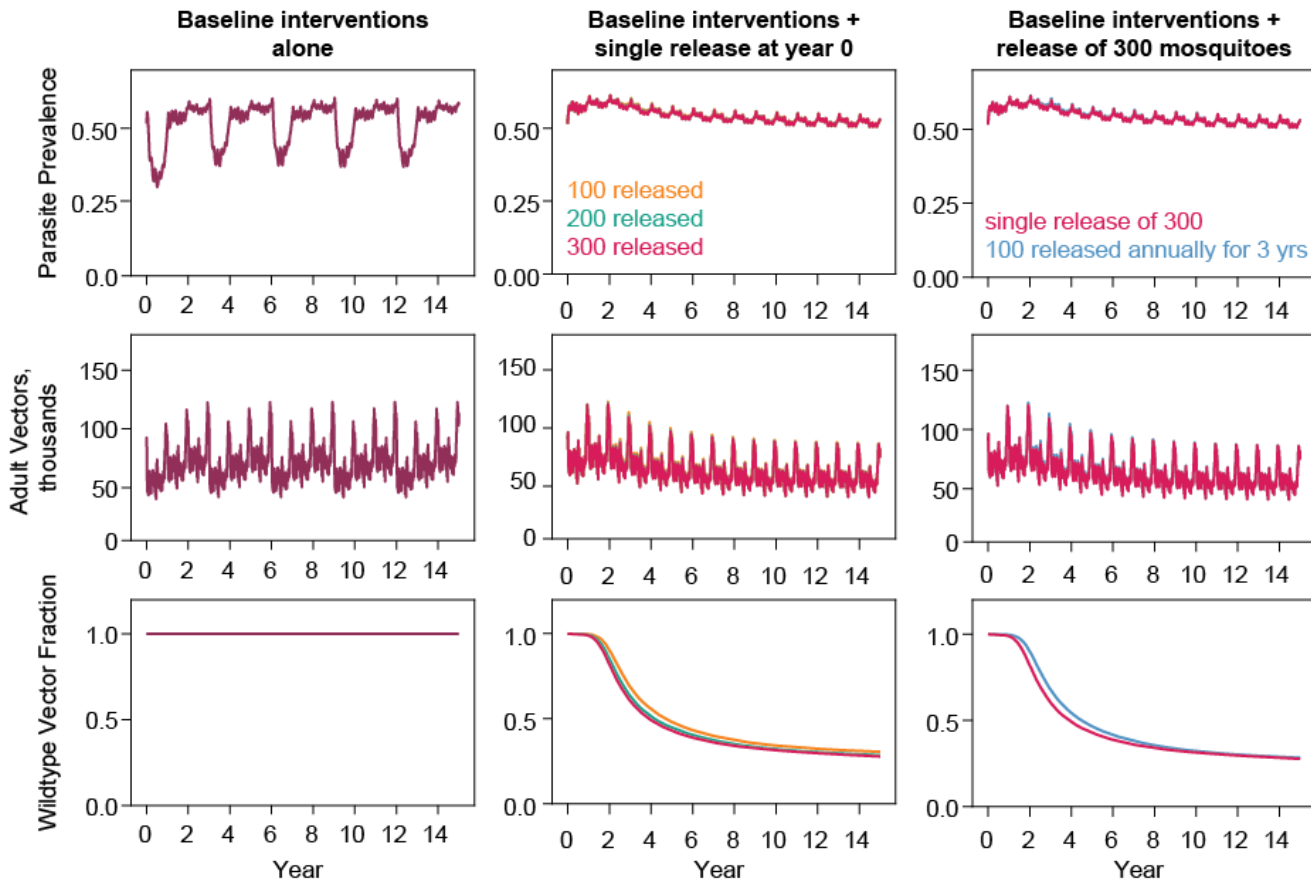
Province	Main determinant	MAP 2015 Parasite prevalence at the center (%)	Area (urban or rural)
Nord Kivu	Mountain facies, hypoendemic zone	8.7	Rural
Haut Katanga	Equatorial and tropical facies, meso endemic zone	18.5	Rural
Kwango		32.0	Rural
Equateur		32.6	Rural
Bas Uele	Tropical facies, hyperendemic	18.6	Urban
Nord Ubangui		19.8	Rural
Kasai Central		37.5	Rural
Kinshasa	Urban context, with variations from the city center to the periphery	60.7	Urban

475 **Table 1** Estimates of costs of interventions per year per one million population applied in the study.

	Interventions	Coverage (%)	Cost per year (\$int, millions) per one million population [i.e. cost per capita] using 2000 base year	
			Lower bound	Upper bound
Scenarios without gene drives	Insecticide-treated bed nets (ITNs)	50	0.47	
	Insecticide-treated bed nets (ITNs)	80	0.63	
	Insecticide-treated bed nets (ITNs)	95	0.71	
	Case management with artemisinin-based combination therapy (ACT)	50	0.19	
	Case management with artemisinin-based combination therapy (ACT)	80	0.20	
	Case management with artemisinin-based combination therapy (ACT)	95	0.21	
	Combination (ITNs & ACT)	50	0.68	
	Combination (ITNs & ACT)	80	0.82	
	Combination (ITNs & ACT)	95	0.74	
			Lower bound	Upper bound

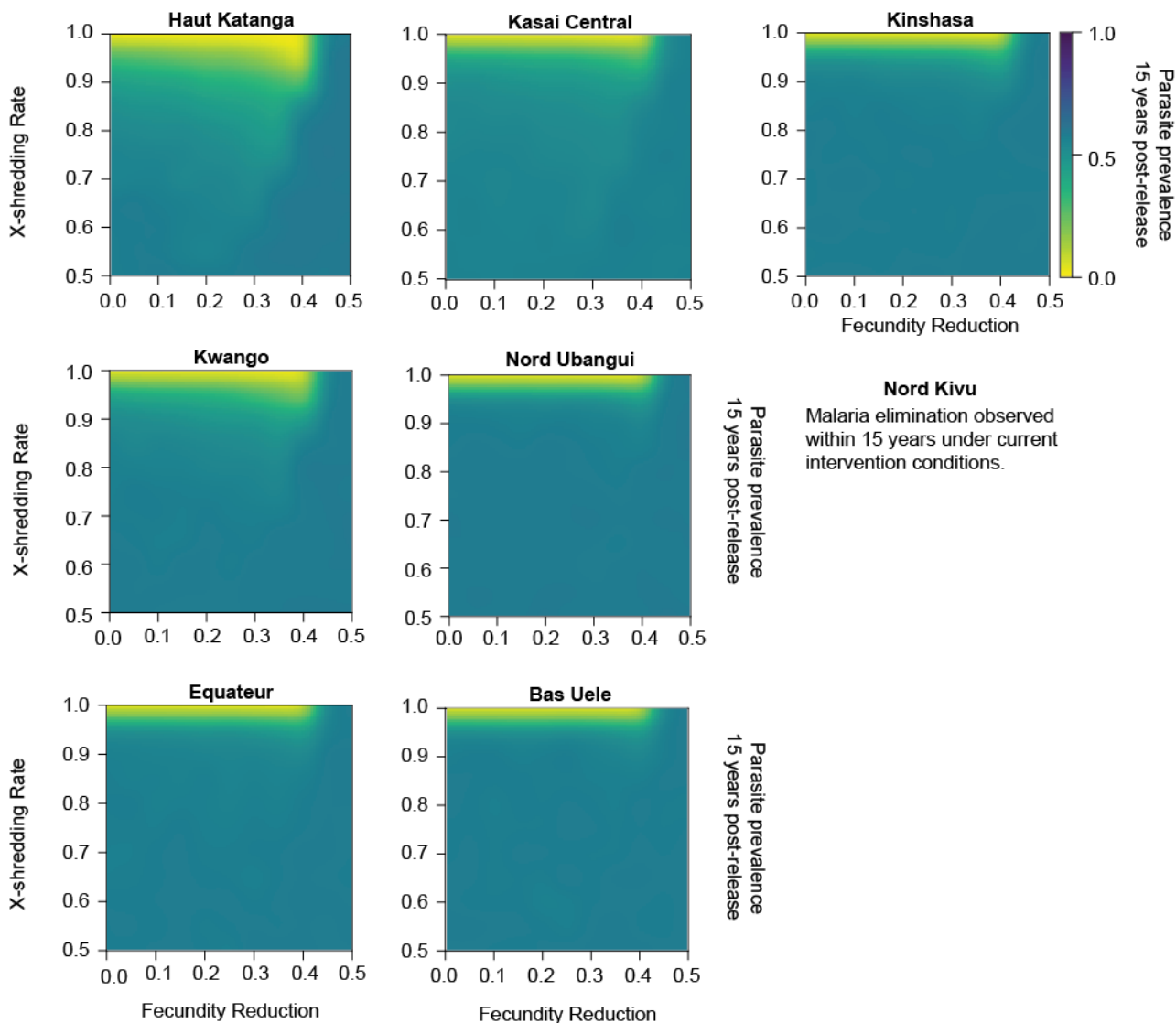
Scenarios with gene drives	300 gene drive mosquitoes with X-shredding rates = 1.0 alone	NA	0.72	7.17
	ITNs plus gene drives with X-shredding rates = 0.95 and 1.0	80	1.35	7.80
	ITNs plus gene drives with X-shredding rates = 0.95 and 1.0	95	1.43	7.88
	ACT plus gene drives with X-shredding rates = 0.95 and 1.0	95	0.93	7.38
	ITNs+ACT plus gene drives with X-shredding rates = 0.95 and 1.0	50	1.40	7.85
	ITNs+ACT plus gene drives with X-shredding rates = 0.95 and 1.0	80	1.54	7.99
	ITNs+ACT plus gene drives with X-shredding rates = 0.9, 0.95 and 1.0	95	1.46	7.91

476 **Figure 2** Characteristic non-spatial model output time series from testing a single release of 100, 200,
477 and 300 driving-Y gene drive mosquitoes at year 0 and multiple releases of 100 gene drives at year 0,
478 year 1, and year 2. In the simulations, the X-shredding rate, which is the shredding rate of the X
479 chromosome that favors unaffected Y-bearing sperm ranging from 0.5 to 1.0. The fecundity reduction is
480 the reduction of the potential to reproduce offspring ranging from 0 to 0.5. Results from Equateur site
481 presented here, see Supplementary 1, non-spatial simulation framework: number and frequency of
482 driving-Y gene drive mosquitoes released, for remaining sites.



483
484

485 **Figure 3** Simulation outputs, observed at the end of 15-year simulation timeframe, post-release of 300
 486 gene drive mosquitoes at year 0 in the non-spatial framework of eight study locations by driving-Y
 487 parameter values, see Supplementary 2, non-spatial simulation framework: driving-Y parameters of gene
 488 drive mosquitoes released, for post-releases of 100 and 200 gene drive mosquitoes.



489
 490

491 **Table 2** Minimum intervention or combination that can achieve malaria elimination in each target
 492 location within 15 years after adding driving-Y mosquitoes into the simulated scenarios. When gene
 493 drives were applied, multiple X-shredding rates were simulated. The X-shredding rate in the table is the
 494 lowest X-shredding rate that could result in malaria elimination.

Province	The <u>minimal intervention(s)</u> that could achieve malaria elimination								
Nord Kivu	Elimination is possible with interventions at pre-existing levels.								
Intervention	ITNs			ACT			ITNs+ACT		
Coverage	50%	80%	95%	50%	80%	95%	50%	80%	95%
Haut Katanga	1.0	0.95	0.95	1.0	1.0	0.95	0.95	NA	NA
Kwango	1.0	1.0	0.95	1.0	1.0	1.0	1.0	0.95	NA
Kasai Central	1.0	1.0	0.95	1.0	1.0	1.0	1.0	0.95	NA
Nord Ubangui	1.0	1.0	0.95	1.0	1.0	1.0	1.0	0.95	NA
Bas Uele	1.0	1.0	1.0	1.0	1.0	1.0	1.0	0.95	0.9
Kinshasa	1.0	1.0	1.0	1.0	1.0	1.0	1.0	0.95	0.9
Equateur	1.0	1.0	1.0	1.0	1.0	1.0	1.0	0.95	0.9

495 Notes for Table 2:

Orange color: malaria elimination without gene drives	ITNs: insecticide-treated nets
Blue color: malaria elimination with gene drives	ACT: case management with artemisinin-based combination treatment (Artemether + Lumefantrine)
1.0: gene drives with X-shredding rate = 1.0	
0.95: gene drives with X-shredding rates = 0.95 and 1.0	
0.9: gene drives with X-shredding rates = 0.9, 0.95 and 1.0	
NA: not applicable, gene drives were not applied in the scenarios because the scenarios could achieve malaria elimination with the indicated intervention or combination without gene drives.	

496

Table 3 Average yearly cost per one million population and mean parasite prevalence reduction for interventions and combinations of interventions applied in the study.

Intervention	Cover-age	WHO's	Estimates from model's outputs								
		Average yearly costs per one million population (\$int, million)	Mean parasite prevalence reduction from baseline over 15 years (%)	The first interval: year 1-5		The second interval: year 6-10		The last interval: year 11-15		Transmissi on intensity	
				Yearly cost (\$int, million) per million population	Mean parasite prevalence reduction from baseline (%)	Yearly cost (\$int, million) per million population	Mean parasite prevalence reduction from baseline (%)	Yearly cost (\$int, million) per million population	Mean parasite prevalence reduction from baseline (%)		
Scenarios without gene drives	50%	0.47	0.48	-0.03	0.47	-0.05	0.48	-0.03	0.5	-0.03	Low
			0.47	-0.03	0.47	-0.03	0.46	-0.02	0.47	-0.02	Medium
			0.48	-0.02	0.48	-0.03	0.48	-0.02	0.48	-0.02	High
	80%	0.63	0.63	0.08	0.63	0.13	0.62	0.06	0.63	0.05	Low
			0.63	0.06	0.63	0.10	0.64	0.06	0.63	0.03	Medium
			0.57	0.05	0.63	0.08	0.45	0.05	0.63	0.02	High
	95%	0.71	0.71	0.23	0.71	0.23	0.71	0.23	0.71	0.23	Low
			0.70	0.11	0.71	0.15	0.69	0.10	0.7	0.07	Medium
			0.69	0.10	0.71	0.15	0.66	0.09	0.71	0.05	High
	ACT	50%	0.19	0.19	-0.08	0.19	-0.14	0.19	-0.06	0.19	-0.04
0.19				-0.04	0.19	-0.06	0.19	-0.04	0.19	-0.01	Medium
0.19				-0.02	0.19	-0.04	0.19	-0.03	0.19	0.00	High
80%		0.2	0.21	0.01	0.22	-0.02	0.21	0.03	0.21	0.04	Low
			0.20	0.02	0.2	0.01	0.2	0.02	0.2	0.04	Medium

		95%	0.21	0.20	0.03	0.2	0.03	0.2	0.03	0.2	0.05	High				
				0.21	0.11	0.21	0.08	0.21	0.13	0.21	0.12	Low				
				0.21	0.10	0.21	0.12	0.21	0.09	0.21	0.10	Medium				
				0.21	0.09	0.21	0.09	0.21	0.09	0.21	0.09	High				
	ITNs & ACT	50%	0.68	0.69	0.07	0.68	0.10	0.7	0.07	0.69	0.06	Low				
				0.68	0.06	0.68	0.08	0.68	0.05	0.67	0.04	Medium				
				0.68	0.05	0.68	0.06	0.68	0.05	0.68	0.04	High				
		80%	0.82	0.82	0.36	0.82	0.26	0.82	0.40	0.82	0.42	Low				
				0.82	0.28	0.82	0.36	0.82	0.25	0.81	0.23	Medium				
				0.82	0.23	0.82	0.27	0.82	0.22	0.81	0.18	High				
		95%	0.74	0.74	0.36	0.74	0.27	0.74	0.40	0.74	0.42	Low				
				0.74	0.48	0.74	0.43	0.74	0.49	0.74	0.51	Medium				
				0.74	0.42	0.74	0.43	0.74	0.41	0.74	0.40	High				
	Cost calculation range				Lower bound	Upper bound		Lower bound	Upper bound		Lower bound	Upper bound				
	Scenarios with gene drives	300 gene drive mosquitoes with X-shredding rates = 1.0 alone	NA	NA	0.72	7.17	0.23	0.72	7.15	-0.13	0.72	7.18	0.40	0.72	7.18	0.42
0.80					7.94	0.36	0.95	9.47	0.08	0.72	7.17	0.48	0.72	7.17	0.51	Medium
0.72					7.17	0.36	0.72	7.16	0.04	0.72	7.17	0.51	0.72	7.17	0.53	High
ITNs plus gene drives with X-shredding rates = 0.95 and 1.0		80	NA	1.35	7.81	0.28	1.35	7.83	0.04	1.35	7.81	0.39	1.35	7.8	0.41	Low
				NA	NA	NA	NA	NA	NA	NA	NA	NA	NA	NA	NA	Medium
				NA	NA	NA	NA	NA	NA	NA	NA	NA	NA	NA	NA	High
ITNs plus gene drives with X-	95	NA	1.43	7.89	0.33	1.43	7.89	0.16	1.43	7.89	0.40	1.43	7.88	0.42	Low	
			1.43	7.88	0.42	1.43	7.88	0.26	1.43	7.88	0.48	1.43	7.88	0.51	Medium	

shredding rates = 0.95 and 1.0			NA	NA	NA	NA	NA	NA	NA	NA	NA	NA	NA	NA	NA	High
ACT plus gene drives with X-shredding rates = 0.95 and 1.0	95	NA	0.93	7.39	0.32	0.93	7.39	0.14	0.93	7.39	0.40	0.93	7.39	0.42	Low	
			NA	NA	NA	NA	NA	NA	NA	NA	NA	NA	NA	NA	NA	Medium
			NA	NA	NA	NA	NA	NA	NA	NA	NA	NA	NA	NA	NA	High
ITNs & ACT plus gene drives with X-shredding rates = 0.95 and 1.0	50	NA	1.40	7.86	0.32	1.4	7.86	0.16	1.4	7.86	0.40	1.4	7.85	0.42	Low	
			NA	NA	NA	NA	NA	NA	NA	NA	NA	NA	NA	NA	NA	Medium
			NA	NA	NA	NA	NA	NA	NA	NA	NA	NA	NA	NA	NA	High
ITNs & ACT plus gene drives with X-shredding rates = 0.95 and 1.0	80	NA	NA	NA	NA	NA	NA	NA	NA	NA	NA	NA	NA	NA	Low	
			1.54	7.99	0.46	1.54	7.99	0.38	1.54	7.99	0.49	1.54	7.99	0.51	Medium	
			1.54	7.99	0.47	1.54	7.99	0.36	1.54	7.99	0.51	1.54	7.98	0.53	High	
ITNs & ACT plus gene drives with X-shredding rates = 0.9, 0.95 and 1.0	95	NA	NA	NA	NA	NA	NA	NA	NA	NA	NA	NA	NA	NA	Low	
			NA	NA	NA	NA	NA	NA	NA	NA	NA	NA	NA	NA	Medium	
			1.46	7.91	0.49	1.46	7.9	0.44	1.46	7.91	0.51	1.46	7.93	0.53	High	

497
498

Note for Table 3:

1) Prevalence reduction can be negative in some scenarios where less intervention is applied than the baseline comparator of ITNs at 50% coverage and ACT at 19% coverage.

499

2) Scenarios that could achieve malaria elimination are in green. NA = Not Applicable, highlighted in grey.

500

3) Transmission intensity in study areas:

501

Low: Haut Katanga

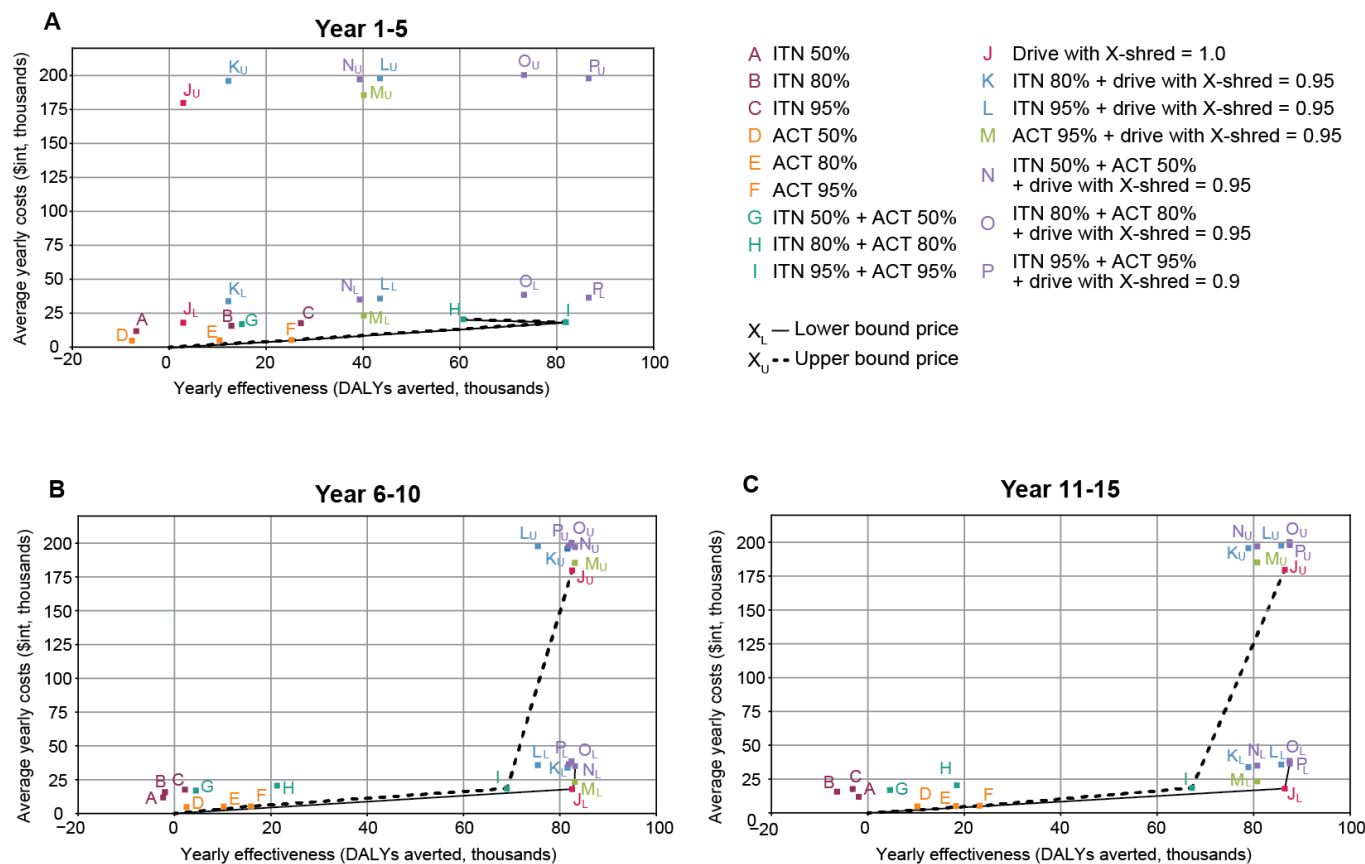
502

Medium: Kwango, Kasai Central, Nord Ubangui

503

High: Bas Uele, Kinshasa, Equateur

504 **Figure 4** Cost-effectiveness plane showing 16 intervention packages (10 individual and
 505 combination interventions at three assumed coverage levels) and expansion paths for year 1-5,
 506 year 6-10, and year 11-15. The black lines (X_L) are expansion paths based on the lower bound
 507 and the dashed lines (X_U) are expansion paths based on the upper bound costs of gene drives.



508

509
510
511
512
513
514
515
516
517
518
519
520
521
522
523
524
525
526
527
528
529
530
531
532
533
534
535
536
537
538
539
540
541
542
543
544
545
546
547
548
549
550
551
552
553
554
555
556
557
558
559
560
561
562
563
564
565
566
567
568
569
570
571
572
573
574
575
576
577
578
579

References

1. WHO. Guidelines for malaria vector control [Internet]. WHO. 2019 [cited 2020 Mar 15]. Available from: <https://www.who.int/malaria/publications/atoz/9789241550499/en/>
2. WHO. Eliminating Malaria [Internet]. 2016 [cited 2020 Mar 15]. Available from: <http://www.who.int>
3. WHO. World Malaria Report [Internet]. 2019. Available from: <https://www.who.int/publications-detail/world-malaria-report-2019>
4. UNICEF. Malaria in Africa [Internet]. Monitoring the situation of children and women. 2019 [cited 2020 Mar 15]. Available from: <https://data.unicef.org/topic/child-health/malaria/>
5. WHO. Malaria [Internet]. Fact sheets. 2020 [cited 2020 Mar 15]. Available from: <https://www.who.int/news-room/fact-sheets/detail/malaria>
6. Vector Link. Democratic Republic of the Congo [Internet]. 2019. Available from: <https://pmivectorlink.org/where-work/drc/>
7. IHME. Global, regional, and national age-sex-specific mortality for 282 causes of death in 195 countries and territories, 1980–2017: a systematic analysis for the Global Burden of Disease Study 2017. *The Lancet Global Health Metrics* [Internet]. 2018 [cited 2020 Feb 4];392(10159):1736–88. Available from: [https://www.thelancet.com/journals/lancet/article/PIIS0140-6736\(18\)32203-7/fulltext](https://www.thelancet.com/journals/lancet/article/PIIS0140-6736(18)32203-7/fulltext)
8. Ngatu NR, Kanbara S, Renzaho A, Wumba R, Mbelambela EP, Muchanga SMJ, et al. Environmental and sociodemographic factors associated with household malaria burden in the Congo. *Malaria Journal* [Internet]. 2019 Feb 26 [cited 2020 Mar 15];18(1):53. Available from: <https://malariajournal.biomedcentral.com/articles/10.1186/s12936-019-2679-0>
9. Unitaaid. Disease Narrative for Malaria [Internet]. 2019 [cited 2020 Mar 15]. Available from: <https://unitaid.org/assets/Malaria-Disease-narrative.pdf>
10. Malaria Policy Advisory Committee Meeting. Universal access to core malaria interventions in high-burden countries [Internet]. 2018. Available from: <http://www.who.int/malaria/mpac/mpac-april2018-universal-access-core-interventions-session8.pdf>
11. Head MG, Goss S, Gelister Y, Alegana V, Brown RJ, Clarke SC, et al. Global funding trends for malaria research in sub-Saharan Africa: a systematic analysis. *The Lancet Global Health*. 2017 Aug 1;5(8):e772–81.
12. Roll Back Malaria Partnership. RBM Partnership Strategic Plan 2017 – 2020. 2017;(February 2018).
13. President’s Malaria Initiative. FY 2019 Democratic Republic of Congo Abbreviated Malaria Operational Plan. 2019; Available from: <https://www.pmi.gov/docs/default-source/default-document-library/malaria-operational-plans/fy19/fy-2019-democratic-republic-of-the-congo-abbreviated-malaria-operational-plan.pdf?sfvrsn=5>
14. Committee on Gene Drive Research in Non-Human Organisms: Recommendations for Responsible Conduct; Board on Life Sciences; Division on Earth and Life Studies; National Academies of Sciences Engineering and Medicine. *Gene Drives on the Horizon: Advancing Science, Navigating Uncertainty, and Aligning Research with Public Values* [Internet]. National Academies Press; 2016. Available from: <http://www.nap.edu/catalog/23405>
15. North AR, Burt A, Godfray HCJ. Modelling the potential of genetic control of malaria mosquitoes at national scale. *BMC Biology* [Internet]. 2019 Mar 29 [cited 2020 Feb 15];17(1):1–12. Available from: <https://bmcbiol.biomedcentral.com/articles/10.1186/s12915-019-0645-5>
16. Burt A, Deredec A. Self-limiting population genetic control with sex-linked genome editors. *Proceedings of the Royal Society B: Biological Sciences*. 2018;285(1883).
17. Mnzava AP, Knox TB, Temu EA, Trett A, Fornadel C, Hemingway J, et al. Implementation of the global plan for insecticide resistance management in malaria vectors: progress, challenges and the way forward. *Malaria journal*. 2015 Apr;14:173.
18. Bhagavathula AS, Elnour AA, Shehab A. Alternatives to currently used antimalarial drugs: In search of a magic bullet. Vol. 5, *Infectious Diseases of Poverty*. BioMed Central Ltd.; 2016.
19. WHO. Status report on artemisinin resistance (January 2014). WHO. 2014;
20. Protopopoff N, Mosha JF, Lukole E, Charlwood JD, Wright A, Mwalimu CD, et al. Effectiveness of a long-lasting piperonyl butoxide-treated insecticidal net and indoor residual spray interventions, separately and together, against malaria transmitted by pyrethroid-resistant mosquitoes: a cluster, randomised controlled, two-by-two factorial design trial. *The Lancet*. 2018 Apr 21;391(10130):1577–88.
21. WHO/TDR and FNIH. Guidance Framework for testing genetically modified mosquitoes. 2014;159. Available from: <http://r4d.dfid.gov.uk/Output/197475/Default.aspx>
22. ENSSER. GENE DRIVES A report on their science, applications, social aspects, ethics and regulations [Internet]. Bern; 2019 [cited 2020 Feb 15]. Available from: <https://genedrives.ch/wp-content/uploads/2019/10/Gene-Drives-Book-WEB.pdf>
23. Paes de Andrade P, José Lima Aragão F, Colli W, Antônio Dellagostin O, Finardi-Filho F, Hiroyuki Hirata M, et al. Use of transgenic *Aedes aegypti* in Brazil: risk perception and assessment. *Bull World Health Organ*. 2016;
24. WHO. Progress and prospects for the use of genetically modified mosquitoes to inhibit disease transmission. 2009;
25. James S, Collins FH, Welkhoff PA, Emerson C, J Godfray HC, Gottlieb M, et al. Pathway to deployment of gene drive mosquitoes as a potential biocontrol tool for elimination of malaria in sub-Saharan Africa: Recommendations of a scientific working group. *American Journal of Tropical Medicine and Hygiene*. 2018 Jun 7;98(Suppl 6):1–49.
26. Hammond AM, Galizi R. Gene drives to fight malaria: current state and future directions. *Pathogens and Global Health* [Internet]. 2017 Nov 17 [cited 2020 Feb 15];111(8):412–23. Available from: <https://www.tandfonline.com/doi/full/10.1080/20477724.2018.1438880>
27. Bradshaw CJA, McMahon CR. Fecundity. In: *Encyclopedia of Ecology, Five-Volume Set*. Elsevier Inc.; 2008. p. 1535–43.
28. Moro D, Byrne M, Kennedy M, Campbell S, Tizard M. Identifying knowledge gaps for gene drive research to control invasive animal species: The next CRISPR step. Vol. 13, *Global Ecology and Conservation*. Elsevier B.V.; 2018. p. e00363.
29. Deredec A, Godfray HCJ, Burt A. Requirements for effective malaria control with homing endonuclease genes. *Proceedings of the National Academy of Sciences of the United States of America* [Internet]. 2011 Oct 25 [cited 2020

- 580 Nov 6];108(43):E874–80. Available from: www.pnas.org/lookup/suppl/
581 30. Deredec A, Burt A, Godfray H CJ. The population genetics of using homing endonuclease genes in vector and pest
582 management. *Genetics* [Internet]. 2008 Aug [cited 2020 Nov 6];179(4):2013–26. Available from:
583 [/pmc/articles/PMC2516076/?report=abstract](https://pubmed.ncbi.nlm.nih.gov/17942013/)
584 31. Feachem RGA, Chen I, Akbari O, Bertozzi-Villa A, Bhatt S, Binka F, et al. Malaria eradication within a generation:
585 ambitious, achievable, and necessary. *The Lancet*. 2019;394(10203):1056–112.
586 32. WHO. Malaria eradication: benefits, future scenarios A report of the Strategic Advisory Group. Geneva; 2020.
587 33. WHO. WHO guide to cost-effectiveness analysis [Internet]. TAN-TORRES EDEJER T, BALTUSSEN R, ADAM T,
588 HUTUBESSY R, ACHARYA A, EVANS D, et al., editors. Switzerland: WHO; 2003 [cited 2020 Mar 19]. Available
589 from: https://www.who.int/choice/publications/p_2003_generalised_cea.pdf
590 34. Haakenstad A, Harle AC, Tsakalos G, Micah AE, Tao T, Anjomshoa M, et al. Tracking spending on malaria by source
591 in 106 countries, 2000–16: an economic modelling study. *The Lancet Infectious Diseases* [Internet]. 2019 Jul 1 [cited
592 2020 Oct 16];19(7):703–16. Available from: <http://dx.doi.org/10.1016/>
593 35. GBD 2017 Causes of Death Collaborators. Global, regional, and national incidence, prevalence, and years lived with
594 disability for 328 diseases and injuries for 195 countries, 1990–2016: A systematic analysis for the Global Burden of
595 Disease Study 2016. *The Lancet*. 2017 Sep 16;390(10100):1211–59.
596 36. WHO. Indoor residual spraying: an operational manual for indoor residual spraying (IRS) for malaria transmission
597 control and elimination – 2nd ed. [Internet]. 2015 [cited 2020 Mar 14]. Available from:
598 [https://apps.who.int/iris/bitstream/handle/10665/177242/9789241508940_eng.pdf;jsessionid=F52653E3A627EEA36605](https://apps.who.int/iris/bitstream/handle/10665/177242/9789241508940_eng.pdf;jsessionid=F52653E3A627EEA36605CF75D5DE5FF7?sequence=1)
599 [CF75D5DE5FF7?sequence=1](https://apps.who.int/iris/bitstream/handle/10665/177242/9789241508940_eng.pdf;jsessionid=F52653E3A627EEA36605CF75D5DE5FF7?sequence=1)
600 37. Curtis CF. Possible Use of Translocations to fix Desirable Genes in Insect Pest Populations. *Nature* [Internet]. 1968
601 [cited 2020 Feb 14];368–9. Available from: <https://www.nature.com/articles/218368a0.pdf?origin=ppub>
602 38. Akbari OS, Chen CH, Marshall JM, Huang H, Antoshechkin I, Hay BA. Novel synthetic medea selfish genetic elements
603 drive population replacement in drosophila; A theoretical exploration of medea -dependent population suppression. *ACS*
604 *Synthetic Biology*. 2014 Dec 19;3(12):915–28.
605 39. Galizi R, Hammond A, Kyrou K, Taxiarchi C, Bernardini F, O’Loughlin SM, et al. A CRISPR-Cas9 sex-ratio distortion
606 system for genetic control. *Scientific Reports*. 2016 Aug 3;6.
607 40. Pike A, Dong Y, Dizaji NB, Gacita A, Mongodin EF, Dimopoulos G. Changes in the microbiota cause genetically
608 modified *Anopheles* to spread in a population. *Science*. 2017 Sep 29;357(6358):1396–9.
609 41. Godfray H CJ, North A, Burt A. How driving endonuclease genes can be used to combat pests and disease vectors. Vol.
610 15, *BioMed Central Biology*. BioMed Central Ltd.; 2017. p. 81.
611 42. Heffel MG, Finnigan GC. Mathematical modeling of self-contained CRISPR gene drive reversal systems. *Scientific*
612 *Reports*. 2019 Dec 1;9(1):1–10.
613 43. Noble C, Min J, Olejarz J, Buchthal J, Chavez A, Smidler AL, et al. Daisy-chain gene drives for the alteration of local
614 populations. *Proceedings of the National Academy of Sciences of the United States of America*. 2019 Apr
615 23;116(17):8275–82.
616 44. Eckhoff PA, Wenger EA, Godfray H CJ, Burt A. Impact of mosquito gene drive on malaria elimination in a
617 computational model with explicit spatial and temporal dynamics. *Proceedings of the National Academy of Sciences of*
618 *the United States of America* [Internet]. 2017;114(2):E255–64. Available from:
619 <http://www.pnas.org/lookup/doi/10.1073/pnas.1611064114>
620 45. Thompson PB. The roles of ethics in gene drive research and governance. *Journal of Responsible Innovation* [Internet].
621 2018 Jan 24 [cited 2020 Feb 23];5(sup1):S159–79. Available from:
622 <https://www.tandfonline.com/doi/full/10.1080/23299460.2017.1415587>
623 46. Wedell N, Price TAR, Lindholm AK. Gene drive: Progress and prospects. *Proceedings of the Royal Society B:*
624 *Biological Sciences*. 2019 Dec 18;286(1917).
625 47. Burt A, Crisanti A. Gene Drive: Evolved and Synthetic. *ACS Chemical Biology*. 2018 Feb 16;13(2):343–6.
626 48. Galizi R, Doyle LA, Menichelli M, Bernardini F, Deredec A, Burt A, et al. A synthetic sex ratio distortion system for the
627 control of the human malaria mosquito. *Nature communications*. 2014 Jun;5:3977.
628 49. Simoni A, Hammond AM, Beaghton AK, Galizi R, Taxiarchi C, Kyrou K, et al. A male-biased sex-distorter gene drive
629 for the human malaria vector *Anopheles gambiae*. *Nature Biotechnology* [Internet]. 2020 May 11 [cited 2020 May
630 16];1–7. Available from: <http://www.nature.com/articles/s41587-020-0508-1>
631 50. Alphey L, Benedict M, Bellini R, Clark GG, Dame DA, Service MW, et al. Sterile-insect methods for control of
632 mosquito-borne diseases: An analysis. Vol. 10, *Vector-Borne and Zoonotic Diseases*. Mary Ann Liebert, Inc.; 2010. p.
633 295–311.
634 51. Zelman B, Kiszewski A, Cotter C, Liu J. Costs of eliminating malaria and the impact of the global fund in 34 countries.
635 *PloS ONE*. 2014;9(12):1–17.
636 52. Shretta R, Zelman B, Birger ML, Haakenstad A, Singh L, Liu Y, et al. Tracking development assistance and government
637 health expenditures for 35 malaria-eliminating countries: 1990–2017. *Malaria Journal* [Internet]. 2017 Jul 14 [cited 2020
638 Feb 15];16(1):251. Available from: <http://www.ncbi.nlm.nih.gov/pubmed/28705160>
639 53. WHO. Malaria control in complex emergencies: an inter-agency handbook. 2005.
640 54. Carrel M, Patel J, Taylor SM, Janko M, Mwandagaliwa MK, Tshetu AK, et al. The geography of malaria genetics in
641 the Democratic Republic of Congo: A complex and fragmented landscape. *Social Science and Medicine*. 2015 May
642 1;133:233–41.
643 55. Haakenstad A, Harle AC, Tsakalos G, Micah AE, Tao T, Anjomshoa M, et al. Tracking spending on malaria by source
644 in 106 countries, 2000–16: an economic modelling study. *The Lancet Infectious Diseases*. 2019 Jul 1;19(7):703–16.
645 56. PNLIP, SwissTPH, KSPH, NRB, INFORM. An Epidemiological Profile of Malaria in the Democratic Republic of
646 Congo. 2014.
647 57. Sturrock HJW, Roberts KW, Wegbreit J, Ohrt C, Gosling RD. Tackling imported malaria: An elimination endgame.
648 Vol. 93, *American Journal of Tropical Medicine and Hygiene*. American Society of Tropical Medicine and Hygiene;
649 2015. p. 139–44.
650 58. Alphey N, Alphey L, Bonsall MB. A model framework to estimate impact and cost of genetics-based sterile insect

- 651 methods for dengue vector control. PLoS ONE. 2018;6(10):1–16.
- 652 59. Meghani Z, Boëte C. Genetically engineered mosquitoes, Zika and other arboviruses, community engagement, costs,
653 and patents: Ethical issues. PLoS Neglected Tropical Diseases. 2018;12(7):1–7.
- 654 60. O’Neill SL, Ryan PA, Turley AP, Wilson G, Retzki K, Iturbe-Ormaetxe I, et al. Scaled deployment of Wolbachia to
655 protect the community from dengue and other aedes transmitted arboviruses. Gates Open Research. 2018 Aug 13;2:36.
- 656 61. Undurraga EA, Halasa YA, Shepard DS. Economic Analysis of Genetically Modified Mosquito Strategies. In: Genetic
657 Control of Malaria and Dengue. Elsevier Inc.; 2016. p. 375–408.
- 658 62. WHO. Evaluation of genetically modified mosquitoes for the control of vector-borne diseases [Internet]. 2020 [cited
659 2021 Feb 12]. Available from: <https://www.who.int/publications/i/item/9789240013155>
- 660 63. Dambach P, Traore I, Becker N, Kaiser A, Sie A, Sauerborn R. EMIRA: Ecologic Malaria Reduction for Africa--
661 innovative tools for integrated malaria control. Global health action. 2014;7:25908.
- 662 64. Kingiri AN, Hall A. The Role of Policy Brokers: The Case of Biotechnology in Kenya. Review of Policy Research
663 [Internet]. 2012 Jul 1 [cited 2020 Apr 22];29(4):492–522. Available from: <http://doi.wiley.com/10.1111/j.1541-1338.2012.00573.x>
- 664 65. The Royal Society. Gene drive research: why it matters [Internet]. 2018 [cited 2020 Feb 22]. Available from:
665 <https://royalsociety.org/~media/policy/Publications/2018/08-11-18-gene-drive-statement.pdf>
- 666 66. Miles A, Harding NJ, Bottà G, Clarkson CS, Antão T, Kozak K, et al. Genetic diversity of the African malaria vector
667 *Anopheles gambiae*. Nature. 2017 Dec 7;552(7683):96–100.
- 668 67. Guerra CA, Reiner RC, Perkins TA, Lindsay SW, Midega JT, Brady OJ, et al. A global assembly of adult female
669 mosquito mark-release-recapture data to inform the control of mosquito-borne pathogens. Parasites and Vectors.
670 2014;7(1):1–15.
- 671 68. IDM. Epidemiological Modeling Software [Internet]. 2019 [cited 2019 Feb 27]. Available from:
672 <http://idmod.org/software>
- 673 69. Eckhoff PA. A malaria transmission-directed model of mosquito life cycle and ecology. Malaria journal [Internet]. 2011
674 Oct 17 [cited 2020 Mar 17];10(1):303. Available from: <https://malariajournal.biomedcentral.com/articles/10.1186/1475-2875-10-303>
- 675 70. Eckhoff PA. Malaria parasite diversity and transmission intensity affect development of parasitological immunity in a
676 mathematical model. Malaria Journal. 2012;1–14.
- 677 71. Eckhoff P. Mathematical models of within-host and transmission dynamics to determine effects of malaria interventions
678 in a variety of transmission settings. American Journal of Tropical Medicine and Hygiene [Internet]. 2013 May 1 [cited
679 2020 Oct 26];88(5):817–27. Available from: <https://www.ajtmh.org/content/journals/10.4269/ajtmh.12-0007>
- 680 72. Gerardin J, Eckhoff P, Wenger EA. Mass campaigns with antimalarial drugs: A modelling comparison of artemether-
681 lumefantrine and DHA-piperazine with and without primaquine as tools for malaria control and elimination. BMC
682 Infectious Diseases [Internet]. 2015 Mar 22 [cited 2020 Oct 26];15(1):144. Available from:
683 <https://bmcinfectdis.biomedcentral.com/articles/10.1186/s12879-015-0887-y>
- 684 73. Gerardin J, Ouedraogo AL, McCarthy KA, Eckhoff PA, Wenger EA. Characterization of the infectious reservoir of
685 malaria with an agent-based model calibrated to age-stratified parasite densities and infectiousness. Malaria journal.
686 2015 Jun;14:231.
- 687 74. Selvaraj P, Wenger EA, Gerardin J. Seasonality and heterogeneity of malaria transmission determine success of
688 interventions in high-endemic settings: A modeling study. BMC Infectious Diseases. 2018;18(1):1–14.
- 689 75. Selvaraj P, Wenger EA, Bridenbecker D, Windbichler N, Russell JR, Gerardin J, et al. Vector genetics, insecticide
690 resistance and gene drives: An agent-based modeling approach to evaluate malaria transmission and elimination.
691 Davenport MP, editor. PLOS Computational Biology [Internet]. 2020 Aug 14 [cited 2020 Oct 1];16(8):e1008121.
692 Available from: <https://dx.plos.org/10.1371/journal.pcbi.1008121>
- 693 76. USAID. Democratic Republic Of The Congo Demographic and Health Survey (DRC-DHS II 2013-2014) Supplemental
694 Malaria Report [Internet]. 2015 [cited 2020 Mar 17]. Available from: www.DHSprogram.com.
- 695 77. USAID. Demographic and Health Survey 2013-14 Key Findings Democratic Republic of Congo [Internet]. 2015 [cited
696 2020 Mar 17]. Available from: <http://www.dhsprogram.com>.
- 697 78. North AR, Burt A, Godfray HCJ. Modelling the potential of genetic control of malaria mosquitoes at national scale.
698 BMC Biology [Internet]. 2019 Mar 29 [cited 2020 Nov 6];17(1):26. Available from:
699 <https://bmcbiol.biomedcentral.com/articles/10.1186/s12915-019-0645-5>
- 700 79. The Malaria Atlas Project. PR Survey Data - MAP [Internet]. 2018 [cited 2018 Sep 14]. Available from:
701 <https://malariaatlas.org/pr-survey-data/>
- 702 80. QGIS Development Team. QGIS Geographic Information System [Internet]. Open Source Geospatial Foundation
703 Project. 2019 [cited 2019 Mar 1]. Available from: <http://qgis.osgeo.org>
- 704 81. School of Geography and Environmental Science, Southampton U of. Democratic Republic of the Congo 100m
705 Population. Alpha version 2010 and 2015 estimates of numbers of people per grid square, with national totals adjusted to
706 match UN population division estimates (<http://esa.un.org/wpp/>) and remaining unadjusted [Internet]. WorldPop. 2013.
707 Available from: www.worldpop.org
- 708 82. Koenraadt CJM, Githeko AK, Takken W. The effects of rainfall and evapotranspiration on the temporal dynamics of
709 *Anopheles gambiae s.s.* and *Anopheles arabiensis* in a Kenyan village. Acta tropica. 2004 Apr;90(2):141–53.
- 710 83. Hijmans RJ, Cameron SE, Parra JL, Jones PG, Jarvis A. Very high resolution interpolated climate surfaces for global
711 land areas. International Journal of Climatology. 2005 Dec;25(15):1965–78.
- 712 84. NOAA. The NOAA Climate Prediction Center African Rainfall Estimation Algorithm Version 2.0. 2006.
- 713 85. IRI/LDEO. dataset: USGS VCAP eight-day [Internet]. 2019 [cited 2019 Mar 13]. Available from:
714 <https://iridl.ldeo.columbia.edu/SOURCES/USGS/VCAP/eight-day/>
- 715 86. Chabot-Couture G, Nigmatulina K, Eckhoff P. An environmental data set for vector-borne disease modeling and
716 epidemiology. PLoS ONE. 2014;9(4).
- 717 87. Bhatt S, Weiss DJ, Cameron E, Bisanzio D, Mappin B, Dalrymple U, et al. The effect of malaria control on *Plasmodium*
718 *falciparum* in Africa between 2000 and 2015. Nature. 2015 Oct 8;526(7572):207–11.
- 719 88. WHO. World Malaria Report [Internet]. 2010 [cited 2020 May 5]. Available from:
- 720
- 721

- 722 https://www.who.int/malaria/world_malaria_report_2010/worldmalariareport2010.pdf?ua=1
723 89. Evans DB, Edejer TT-T, Adam T, Lim SS. Methods to assess the costs and health effects of interventions for improving
724 health in developing countries. *The British Journal of Medicine*. 2005;331(7525):1137–40.
725 90. WHO. Democratic Republic of the Congo Statistics [Internet]. 2016. Available from:
726 <http://www.who.int/countries/cod/en/>
727 91. Salomon JA. Disability-Adjusted Life Years. In: *Encyclopedia of Health Economics*. Elsevier; 2014. p. 200–3.
728 92. WHO. WHO methods and data sources for global burden of disease estimates 2000-2015 [Internet]. 2017 [cited 2020
729 Mar 22]. Available from: http://www.who.int/gho/mortality_burden_disease/en/index.html
730 93. Morel CM, Lauer JA, Evans DB. Cost effectiveness analysis of strategies to combat malaria in developing countries.
731 *The British Medical Journal* [Internet]. 2005 Dec;331(December):1–7. Available from:
732 <https://www.bmj.com/content/331/7528/1299>
733 94. WHO. AFR E: Cost effectiveness results for Malaria [Internet]. World Health Organization; 2020 [cited 2020 Jun 21].
734 Available from: https://www.who.int/choice/results/mal_afre/en/

735 **Acknowledgments**

736 **General:** The authors thank the Institute for Disease Modeling and, in particular, Benoit
737 Raybaud and Edward Wenger for their generous technical support and resource sharing.
738 We are immensely grateful to Philip Welkhoff and David O'Brochta for helpful
739 discussions and comments on earlier versions of the manuscript.

740 **Funding:** Federal Ministry for Economic Cooperation and Development (BMZ) via the German
741 Academic Exchange Service (DAAD) and the Wellcome Trust. The funding sources are
742 not involved in study design; in the collection, analysis, and interpretation of data; in the
743 writing of the report; and in the decision to submit the paper for publication.

744 **Author contributions:** Conceptualization and experimental design: NM, JG, CB, JvB, and MN.
745 Experimental work: NM. Data interpretation and analysis: NM, JG, and PS. Supervision:
746 JG, CB, and JvB. Writing original draft: NM and JG. Writing – review and editing: NM,
747 JG, PS, CB, JvB, MN and GA.

748 **Competing interests:** The authors state that there are no competing interests.

749 **Data and materials availability:**

750 Codes on GitHub:

751 gene drive: <https://github.com/NaniMet/gene-drive>

752 dtk-tools: <https://github.com/InstituteForDiseaseModeling/dtk-tools>

753 EMOD: <https://github.com/InstituteForDiseaseModeling/EMOD>