

1 **Predictors of postoperative biochemical remission in acromegaly**

2 Shun Yao, MD, PhD,^{1,2*} Wen-Li Chen, MD,^{1*} Sherwin Tavakol, MPH,^{2,3} Farhana Akter, MD^{4,5}

3 Michael P. Catalino, MD, MSc,^{2,6} Jie Luo, BS,^{7,8} Xiao-Peng Guo, MD, PhD,⁹ Ai-Liang Zeng,

4 MD, PhD,¹⁰ Leo Zekelman, BA,¹¹ Zhi-Gang Mao, MD, PhD,¹ Yong-Hong Zhu, PhD,¹² Qing-Zhi

5 Wu, PhD,¹³ Edward R Laws, Jr, MD, FACS,² Wenya Linda Bi, MD, PhD,^{2#} Hai-Jun Wang, MD,

6 PhD^{1#}

7 ¹ Center for Pituitary Tumor Surgery, Department of Neurosurgery, The First Affiliated Hospital,

8 Sun Yat-sen University, Guangzhou, Guangdong, China

9 ² Center for Skull Base and Pituitary Surgery, Department of Neurosurgery, Brigham and

10 Women's Hospital, Harvard Medical School, Boston, Massachusetts, USA

11 ³ Department of Neurological Surgery, Keck School of Medicine, University of Southern

12 California, Los Angeles, California, USA

13 ⁴ Faculty of Arts and Sciences, Harvard University, Cambridge, Massachusetts, USA

14 ⁵ Department of Neuroscience, University of Cambridge, Cambridge, UK

15 ⁶ Department of Neurosurgery, University of North Carolina, Chapel Hill, North Carolina, USA

16 ⁷ Surgical Planning Laboratory, Department of Radiology, Brigham and Women's Hospital,

17 Harvard Medical School, Boston, Massachusetts, USA

18 ⁸ Department of Complexity Science and Engineering, Graduate School of Frontier Sciences,

19 The University of Tokyo, Tokyo, Japan

20 ⁹ Department of Neurosurgery, Peking Union Medical College Hospital, Chinese Academy of

21 Medical Sciences and Peking Union Medical College, Beijing, China

22 ¹⁰ Department of Cancer Biology, University of Texas MD Anderson Cancer Center, Houston,

23 Texas, USA

24 ¹¹ Speech and Hearing Bioscience and Technology, Harvard University, Cambridge,
25 Massachusetts, USA

26 ¹² Department of Histology and Embryology, Zhongshan School of Medicine, Sun Yat-Sen
27 University, Guangzhou, Guangdong, China

28 ¹³ State Key Laboratory of Advanced Technology for Materials Synthesis and Processing,
29 Wuhan University of Technology, Wuhan, Hubei, China

30 *Shun Yao and Wen-Li Chen contributed equally to the work.

31 **Disclosure:** Leo Zekelman received funding from National Institute of Health (NIH) Ruth L.
32 Kirschstein National Research Service Award (T32DC000038-27).

33 **Financial support:** This work was supported by the funding to SY through the Chinese
34 Postdoctoral Science Foundation (2019M663271) and the Chinese Scholarship Council
35 (201808440461), Guangzhou Science and Technology Project (201704020085) to HJW.

36

37 **Co-corresponding authors**

38 **Wenya Linda Bi, M.D., Ph.D.**

39 Assistant Professor

40 Department of Neurosurgery, Brigham and Women's Hospital, Harvard Medical School

41 60 Fenwood Road, MA 02115, United States

42 Email: wbi@bwh.harvard.edu | Tel: +1 (617) 525-8319

43 **Hai-Jun Wang, M.D., Ph.D.**

44 Chairman and Professor

45 Department of Neurosurgery, The First Affiliated Hospital, Sun Yat-sen University

46 58 Zhongshan 2nd Rd, Yuexiu District, Guangzhou 510080, Guangdong, China

47 Email: wanghaij@mail.sysu.edu.cn | Tel: +86-138 2619 9966

48

49 **ABSTRACT**

50 **OBJECTIVE**

51 Acromegaly is a rare neuroendocrine condition that can lead to significant morbidity; therefore,
52 large studies are invaluable for understanding the disease burden. Despite China's vast
53 population size, studies on acromegaly remain sparse. In this report, we aimed to investigate
54 clinical characteristics and predictors of biochemical remission after surgery for acromegaly.

55 **METHODS**

56 A retrospective nationwide study was conducted using patient-reported data from the China
57 Acromegaly Patient Association (CAPA) from 1998 to 2018. Univariate analyses were
58 performed using Wilcoxon rank-sum tests, two-sample t-tests, and chi-squared tests. Using the
59 purposeful selection method, multivariate logistic regression analysis was employed to determine
60 independent predictors of biochemical remission at 3 months in patients after surgery.

61 **RESULTS:** Of the 575 cases (mean age: 37.3 years; 59% female), macroadenomas and invasive
62 tumors (Knosp score 3-4) were 87% and 61%, respectively. Ninety-five percent of patients were
63 treated first with surgery (5.1% transcranial and 94.9% endonasal) and 38.3% exhibited
64 biochemical remission at 3-months postoperatively. The following independent predictors of
65 biochemical remission were identified: preoperative growth hormone (GH) levels between 12
66 and 28 $\mu\text{g/L}$ [odds ratio (OR)=0.61; 95% confidence interval (CI), 0.39-0.96; $p=0.031$],
67 preoperative GH levels $>28 \mu\text{g/L}$ (OR=0.56; 95% CI, 0.35-0.90; $p=0.016$), macroadenoma
68 (OR=0.57; 95% CI, 0.33-0.97; $p=0.041$), giant adenomas (OR=0.17; 95% CI, 0.06-0.44;
69 $p=0.0005$), Knosp score 3-4 (OR=0.39; 95% CI, 0.25-0.59; $p<0.0001$), and preoperative
70 medication usage (OR=2.16; 95% CI, 1.38-3.39; $p=0.0008$).

71 **CONCLUSIONS:** In this nationwide study spanning over two decades, we highlight that higher
72 preoperative GH levels, large tumor size, and greater extent of tumor invasiveness are associated
73 with a lower likelihood of biochemical remission at 3-months after surgery, while preoperative
74 medical therapy increases the chance of remission.

75

76 **KEY WORDS:** acromegaly, growth hormone, pituitary tumor, predictors, biochemical
77 remission

78

79 **RUNNING TITLE:** Postoperative remission predictors in acromegaly

80

81 **ABBREVIATIONS**

82 ACTH adrenocorticotrophic hormone

83 **CAPA** China Acromegaly Patient Association

84 CI confidence interval

85 CT computed tomography

86 DA dopamine agonists

87 FDR family discovery rate

88 GH growth hormone

89 ICA internal carotid artery

90 IGF-1 insulin-like growth factor 1

91 LH, luteinizing hormone

92 IQR interquartile range

93 MRI high-resolution magnetic resonance imaging

94 OR odds ratio
95 PRL prolactin (PRL),
96 FSH follicle stimulating hormone,
97 TSH, thyroid-stimulating hormone
98 VIF variance influence factor
99 SD standard deviation
100 SRLs somatostatin receptor ligands

101

102 **Introduction**

103 Acromegaly is a rare condition characterized by the overproduction of growth hormone
104 (GH) from a hypersecreting pituitary tumor.¹⁻³ Clinical manifestations of GH-secreting tumors
105 can manifest insidiously and result in a delayed diagnosis, while the systemic repercussions of
106 insulin-like growth factor 1 (IGF-1) excess, resultant from GH stimulation, are associated with
107 increased morbidity and mortality.⁴ Symptoms and signs of acromegaly include facial changes,
108 excessive skeletal growth, soft tissue hypertrophy, obstructive sleep apnea, hyperhidrosis,
109 headache, and visual impairments.^{2,5-7} Persistent high levels of GH and/or IGF-1 may also result
110 in glucose intolerance, osteoporosis, arthritis, reproductive disorders, and cardiovascular
111 dysfunction, ultimately driving premature mortality.^{2,4-7}

112 Given the rarity of acromegaly, large studies that characterize the disease
113 pattern, describe risk factors predictive of poor disease control and inform management decisions
114 of this condition are scarce. In particular, there is a notable gap in data regarding prevalence,
115 disease severity, treatments administered, and clinical outcomes for acromegaly patients in China.
116 We present the first report from the China Acromegaly Patient Association (CAPA), which is a

117 non-profit, patient-advocacy organization with a patient-reported database encompassing
118 treatment from 112 hospitals. Using data from this directory, we aim to provide a comprehensive
119 description of clinical characteristics, and to identify predictors of biochemical remission at 3
120 months after surgery in patients with acromegaly in China, so as to improve recognition for the
121 diagnosis of acromegaly and to guide management decisions.

122

123 **Methods**

124

125 *Study Design and Data Collection*

126

127 We retrospectively reviewed the records of 916 acromegaly patients enrolled into the
128 multi-institutional China Acromegaly Patient Association (CAPA) database
129 (<https://capa.wohenok.com>) between June 1998 and December 2018. The CAPA database is
130 patient-reported and relies on the patient submission of demographic and clinical information
131 following the diagnosis and treatment of acromegaly, drawing upon patient information from
132 112 hospitals across China (**Supplemental Materials S1**). Patients lacking data on treatment
133 interventions or biochemical status at follow-up were excluded from the analysis, resulting in a
134 final cohort of 575 patients.

135 We extracted demographic data (including age, sex, location of residence, and insurance
136 type), disease duration, clinical symptoms, biochemical status (at diagnosis and on follow-up),
137 radiographic features, treatment history, histopathology, postoperative complications, and
138 follow-up at 3 months after treatment. Approval (approved ID [2020] 091) for this retrospective

139 study was obtained from CAPA and the institutional review board of The First Affiliated
140 Hospital of Sun Yat-sen University, Guangzhou, China.

141

142 *Variables Analyzed*

143

144 All patients in the CAPA database were diagnosed with acromegaly in accordance with
145 established guidelines (**Box 1**).⁸ Diagnostic factors include classic signs and symptoms,
146 biochemical assays, and radiographic identification of a pituitary tumor.

Box 1 | Diagnostic and biochemical remission criteria for acromegaly

Diagnostic criteria

- Classic signs and symptoms of acromegaly
- Endocrinological assay: fasting growth hormone (GH) > 2.5 µg/L, glucose GH inhibition test with lowest GH > 1 µg/L, and insulin-like growth factor 1 (IGF-1) level higher than the normal range of age- and sex-matched healthy individuals
- Radiographic identification of a pituitary tumor on computed tomography (CT), high-resolution magnetic resonance imaging (MRI), or dynamic contrast-enhanced MRI of the sellar region
- Pituitary hormone aberrancies: abnormal levels in prolactin (PRL), follicle stimulating hormone (FSH), luteinizing hormone (LH), thyroid-stimulating hormone (TSH), and/or adrenocorticotrophic hormone (ACTH)

Biochemical remission criteria⁸

- Random serum GH < 2.5 µg/L, glucose GH inhibition test with GH < 1 µg/L
- Normalized serum IGF-1 level

147

148 *Radiographic features*

149 Imaging was reviewed by either an attending neurosurgeon or neuroradiologist.
150 Cavernous sinus invasion was classified using the Knosp Grading System.⁹ Tumor invasion was
151 defined as Knosp grades 3 & 4 (evidence of tumor crossing the lateral border of the cavernous

152 carotid artery on coronal MRI image), while lack of invasion was defined as a Knosp score of 0
153 to 2 (margin of tumor medial to the lateral border of cavernous carotid artery).^{9,10}

154 Tumor size was classified into three categories: microadenomas (maximum diameter <1
155 cm), macroadenomas (1-4 cm), and giant adenomas (≥ 4 cm).¹¹

156

157 *Location of residence*

158 The geographic grouping was performed based on the Yicai Media Group
159 (<https://www.yicai.com>) stratification of Chinese cities and towns into 5 tiers, which we adapted
160 to classify patient residence into the following categories based on population density and size of
161 economy: large city, medium city, and small city/town.

162

163 *Insurance coverage*

164 There are three insurance schemes in China, including the urban employee-based basic
165 medical insurance scheme (UEBMI; launched in 1998), urban resident-based basic medical
166 insurance scheme (URBMI; launched in 2007), and rural new cooperative medical scheme
167 (NCMS; launched in 2003), which is intended to provide affordable health insurance for the poor
168 and improve the equity of health services in rural China.¹² In general, UEBMI covers a broader
169 array of medical services than URBMI, with NCMS having the least robust coverage.

170 *Treatment*

171

172 Primary treatment modalities included medication, radiotherapy, or surgery, which
173 comprised of microscopic endonasal, endoscopic endonasal, or transcranial surgery (**Figure 1**).

174 The receipt of preoperative medication was decided by an agreement between the physicians and
175 the patients, according to the established guidelines for acromegaly management^{3,8} and the
176 coverage of their medical insurance or financial capacity. All surgical specimens were analyzed
177 using immunohistopathology. Patients who did not achieve initial biochemical remission
178 received one of the following secondary treatments: repeat surgery, radiotherapy, medication, or
179 combined-therapy.

180

181 *Outcome Measures*

182

183 The primary outcome of interest was biochemical remission at 3 months postoperatively.
184 The recurrence rate was also identified using the latest follow up information. The criteria for
185 postoperative biochemical remission after surgery for acromegaly were based on the established
186 guidelines (**Box 1**).⁸

187

188 *Statistical Analysis*

189

190 Baseline characteristics were described using mean \pm standard deviation (SD), median
191 (interquartile range, IQR), or frequency according to the variable type. Group differences were
192 compared using the two-sample Student's t-test or Mann-Whitney U-test for continuous
193 variables, and Pearson's chi-squared test (two-tailed) or Fisher's exact test for categorical
194 variables, as appropriate. The family discovery rate (FDR) correction was performed across all
195 univariate analyses to adjust for multiple testing. A purposeful selection approach to multivariate
196 logistic regression analysis was performed to determine the independent predictors of

197 biochemical remission at 3 months postoperatively in patients with acromegaly. Results were
198 presented as odds ratios (ORs) with 95% confidence intervals (CI). The collinearity between
199 variables was explored and evaluated by the variance influence factor (VIF) in the regression
200 analysis. Significance was set at $p < 0.05$ (two-tailed). All statistical analyses were performed
201 using statistical packages in R (<https://www.R-project.org/>).¹³

202

203 **Results**

204 *Cohort*

205

206 We retrospectively analyzed presenting features, imaging, and clinical outcomes for 575
207 acromegaly patients (mean age 37.3 ± 10.3 years; 59% women) from the multi-institutional
208 patient-reported CAPA database. The median time from symptom onset to diagnosis was 5 years
209 (range: 1-10 years). The most common clinical symptoms and signs at presentation were
210 enlarged nose and prognathism (97.4%) (**Table 1**). Visual field abnormalities, resulting from
211 tumor mass effect, occurred in 49.2% of patients. Apoplexy occurred in 9.6%, producing tumor
212 mass effect. Other comorbidities associated with acromegaly were reported as follows:
213 cardiovascular disease (40.0%), impaired glucose tolerance (31.0%), osteoporosis (22.6%),
214 colonic polyps (16.3%), arthritis (15.8%), and colon cancer (0.7%).

215 Large and giant tumors dominated this cohort, with 73.2% being macroadenomas, 10.1%
216 being giant adenomas, and 16.7% being microadenomas (**Table 2, Figure 2A**). Consistent with
217 the prevalence of large tumors in this cohort, two-thirds of the tumors demonstrated cavernous
218 sinus invasion (**Table 2, Figure 2A**).

219 The majority of patients lived in large cities (43.8%), while only 20.4% of acromegaly
220 patients were from small cities/towns. The urban employer-driven UEBMI scheme was the most
221 prevalent insurance coverage in our cohort (63.7%), followed by the urban resident NCMS
222 (22.6%) and the rural URBMI (13.7%) plans (**Table 1**).

223 Median follow-up after the initial diagnosis was 54 months (range 6-295 months), while
224 median follow-up after initial treatment was 32 months (range 3-256 months), suggesting an
225 average of 19 months interval delay between diagnosis and treatment.

226

227 *Endocrinological Status*

228

229 Among 575 acromegaly patients, the mean levels of GH and IGF-1 prior to surgery were
230 26.8 µg/L and 781.5 µg/L respectively. Mean preoperative GH level was significantly higher in
231 patients with macroadenomas (27.3 µg/L) and giant adenomas (36.8 µg/L) compared to those
232 with microadenomas (18.5 µg/L) (both $p < 0.001$) (**Figure 2B**). Additionally, tumors with
233 cavernous sinus invasion exhibited significantly higher median GH levels than those without
234 invasion (28.7 µg/L vs. 23.3 µg/L, $p < 0.001$) (**Figure 2C**). Tumors with plurihormonal expression
235 showed higher median GH levels (22.7 µg/L) than dual-staining pituitary tumors of GH and
236 prolactin (DSPTs) (20.0 µg/L) and GH alone (16.5 µg/L), but these differences did not reach a
237 statistical significance.

238

239 *Treatment*

240

241 546 patients (95%) received surgery as their initial treatment, while 21 patients (3.7%)
242 received medical therapy alone and 8 patients (1.3%) received upfront radiation (**Figure 1**). The
243 most common operative approach was endoscopic endonasal transsphenoidal (94.9%), with
244 transcranial surgery (5.1% of cases) mostly reserved for larger tumors with a greater extent of
245 invasiveness. The mean age of patients who received either medication or radiation only was 49
246 years (range 32-70 years), compared to a mean of 37 years (range 16-76 years) in patients who
247 underwent surgery ($p < 0.001$). For patients receiving medication alone, mean GH levels trended
248 lower than that of patients who underwent surgery (19.7 vs. 27.0 $\mu\text{g/L}$, respectively; $p = 0.036$).

249

250 *Surgical Outcome*

251

252 Among the 546 patients who underwent initial surgical resection, histopathology
253 confirmed immunopositivity for GH alone in 81.5%, concurrent GH and prolactin staining in
254 13.7%, and the presence of additional hormone expression along with GH in the remaining
255 (4.8%) (**Table 2**). Tumors that stained for both GH and prolactin were more likely than solely
256 GH-staining tumors to be invasive (78.7% vs. 61.1%, respectively; $p = 0.003$).¹⁴ Moreover, the
257 most common postoperative complication was postoperative hyponatremia (sodium < 135
258 mmol/L) (26.0%), followed by diabetes insipidus (18.5%), cerebrospinal fluid leak (6.8%),
259 meningitis (0.4%). One case of internal carotid artery (ICA) injury was reported.

260

261 At three months after surgery, 209 (38.3%) patients had achieved biochemical remission
262 (**Table 3, Figure 1**). More aggressive tumors were associated with a lower likelihood of
263 remission at 3 months. Specifically, higher pre-operative GH levels, larger tumors, and the
presence of cavernous sinus invasion were all significantly associated with lack of remission

264 (p=0.003, p<0.001, p<0.001, respectively). Although biochemical remission was observed in
265 63.6% of microadenoma patients, it was only observed in 12.3% of patients with giant adenomas.
266 Similarly, 57.1% of cases with Knosp grade 0-2 experienced remission, compared to only 27.7%
267 of Knosp grade 3-4 tumors.

268 Multivariate logistic regression analysis showed that preoperative GH levels >28 µg/L
269 (highest tertile of our cohort) compared to pre-operative GH level <12 µg/L (lowest tertile in our
270 cohort) decreased the odds of remission at 3 months after surgery by 44% (p=0.016), adjusted for
271 tumor size and receipt of preoperative medication. Additionally, having a macroadenoma or
272 giant adenoma decreased the odds of remission by 43% (p=0.041) and 83% (p=0.0005),
273 respectively, compared to having a microadenoma. Similarly, tumors with a Knosp score of 3-4
274 had 61% less odds of biochemical remission at 3 months than those with a Knosp score of 0-2
275 (p<0.0001). Adjusted for age, preoperative GH level, tumor size, and Knosp score, preoperative
276 medication usage more than doubled the odds of biochemical remission (OR=2.16, p=0.0008)
277 (**Figure 3**). The reduction of statistical power through a high correlation between two or more
278 explanatory variables (multicollinearity) was not observed in our regression model (maximum
279 VIF=1.3).

280 The recurrence rate was lower in patients with initial biochemical remission (45.0%)
281 compared to patients without initial remission (65.9%) who presented lowest recurrent rate in
282 repeat surgery (48.6%) compared to patients undergoing radiotherapy (59.6%), medication
283 (63.2%), and combined treatments (75.6%) (**Figure 1**).

284 Patient age, sex, disease duration, city type of residence, insurance type, apoplexy,
285 surgical approach (microscopic endonasal, endoscopic endonasal, or transcranial), and

286 plurihormonal expression were not significantly associated with postoperative biochemical
287 remission in this cohort.

288

289 **Discussion**

290 We present the clinical characteristics of over 500 acromegaly patients in China and
291 observe tumor and treatment factors strongly associated with disease control at three months
292 after surgery or other definitive treatment. Our study represents the largest analysis of clinical
293 features and postoperative outcomes of acromegaly in China, and also constitutes the first
294 application of the CAPA database for clinical research. We observed a 3-month postoperative
295 remission rate of 38.3%, with the likelihood of disease control strongly influenced by the
296 preoperative GH level, tumor size, and tumor invasiveness as indicated by the Knosp grade.

297 Despite China's vast population size, medical studies on acromegaly remain sparse,
298 particularly in English-language journals. The earliest record of a surgical case of acromegaly in
299 China dates back to 1929, when the first patient was operated on using transcranial surgery at the
300 Peking Union Medical College Hospital (records endure in archives of the hospital library).
301 Early published studies from China were mostly case series and smaller cohorts. More recently, a
302 single-institution retrospective analysis of 358 Chinese acromegalic patients found the GH
303 remission rate to be 37.3% in patients with invasive macroadenomas without receipt of
304 preoperative somatostatin analogs as compared to 56.4% among those with pre-operative
305 medical treatment.¹⁵ We drew upon the power of a patient-reported database to expand on the
306 clinical experience in the diagnosis and treatment of acromegaly in China across multiple
307 institutions.

308

309 *Clinical characteristics*

310

311 Although the most commonly reported physical changes in our cohort were similar to
312 previously published series,^{2,16} the detection of such changes may occur in a delayed fashion
313 given the typically insidious onset over decades. Additionally, dental malocclusion, median
314 thenar neuropathy (carpal tunnel syndrome), change in shoe size or ring size, and skin tags may
315 be overlooked signs of acromegaly. Sleep apnea, headache, and hyperhidrosis were observed in
316 over half of patients, in addition to menstrual disturbances in two-thirds of female patients.
317 These, among other common non-physical, symptoms should prompt closer inspection for
318 physical signs of acromegaly and consideration for endocrinological evaluation, including
319 assaying IGF-1 determinations.

320 Although visual field deficit clearly triggers an alarm for a compressive etiology
321 involving the optic apparatus, 52.5% of patients with macroadenomas did not report any
322 subjective visual impairment. Clinical concern for a large pituitary tumor, as in aggressive
323 acromegaly cases, should prompt formal neuro-ophthalmologic evaluation.

324 Acromegaly is associated with premature mortality.^{17,18} Older age at diagnosis, increased
325 time from symptom onset to diagnosis, higher GH levels after treatment, and cardiovascular risk
326 factors are independent predictors of early mortality.¹⁸ Forty percent of patients in this cohort
327 reported cardiovascular symptoms or disease, including heart palpitations, arrhythmias (e.g.,
328 atrial fibrillation and heart block), structural heart diseases (e.g., cardiomyopathy and valvular
329 disease), and hypertension. These findings, when viewed in light of the fact that the mean age of
330 our cohort was only 37.3 years, underscores the strikingly significant impact of acromegaly on
331 cardiovascular health.¹⁹ Furthermore, the high incidence of impaired glucose tolerance (diabetes

332 mellitus), osteoporosis, colonic polyps, and arthritis/arthropathies observed also supports the
333 need for diligent and careful screening by providers, as outlined by the Endocrine Society
334 Clinical Practice Guidelines for acromegaly.¹ Early diagnosis in conjunction with effective
335 treatment and persistent control/screening of comorbidities are paramount to decreasing the
336 morbidity and mortality associated with this condition.

337

338 *Factors influencing biochemical remission*

339

340 The 38.3% biochemical remission rate at 3-months after surgery for a GH secreting
341 tumor in our cohort is relatively low compared to other reports in the literature.^{20,21} This may
342 reflect the high proportion of large and invasive tumors encompassed by our cohort. Additionally,
343 cultural factors and health literacy for neuroendocrinological diseases may contribute to a delay
344 in seeking medical care, resulting in the disease progression. In addition, 1 in 5 patients in our
345 cohort was from a small city or town, which may further delay access to medical care and
346 endocrinological evaluation. Although we did not observe a statistically significant impact of
347 socioeconomic or insurance status on the likelihood of biochemical remission after surgery for
348 acromegaly in this patient-reported cohort, further investigations are merited to improve the
349 delay between diagnosis and treatment, and also potential delays in the initial recognition of
350 acromegaly, especially amongst individuals with geographical and financial barriers.

351 Preoperative clinical and biochemical characteristics could impact the likelihood of
352 biochemical remission, including age at diagnosis,²² gender,²² preoperative serum levels of GH
353 and IGF-1,^{20,23–27} tumor size,^{20,24,28,29} preoperative medication usage,^{15,21} tumor
354 invasiveness,^{20,24,27–31} and histological pathology.^{24,30} Similar to other studies, our analysis also

355 revealed that larger tumors (giant and macroadenomas) were less likely than small tumors to
356 enter biochemical remission at 3 months. Further, patients with invasive tumors and higher
357 preoperative GH levels were less likely to attain remission, adjusted for tumor size and receipt of
358 preoperative medical therapy. Given that aggressive tumors were shown to be less likely to enter
359 biochemical remission postoperatively, early surgical intervention should be instituted to halt
360 further progression of disease.³²

361 Pharmaceutical treatment, including somatostatin receptor ligands (SRLs), growth
362 hormone receptor antagonists, and dopamine agonists (DA), have shown to have a beneficial
363 impact on surgical outcomes as both neoadjuvant and adjuvant therapy,^{15,21} which was also
364 demonstrated by our team.³³ In particular, administration of somatostatin analogs prior to surgery
365 is associated with higher endocrinological remission than adjuvant treatment alone.^{15,34–37}
366 Likewise, the use of preoperative medical treatment more than doubled the odds of remission in
367 our cohort.

368 Long-term remission in patients with initial remission showed a delayed improvement of
369 biochemical remission. Among secondary treatments in patients without initial remission, the
370 lowest recurrence rate presented in patients undergoing repeat surgery, the necessity of which is
371 highlighted in persistent cases with invasive tumors.^{38,39}

372

373 ***Limitations***

374 Our study strengthens the insight into the patterns of care and results of treatment for
375 acromegaly in China. The vast heterogeneity in the regional economy, insurance coverage,
376 education, health literacy, and accessibility of medical care, however, may limit the
377 generalizability of these results to all acromegaly patients in China. The self-reported nature of

378 the CAPA database further contributed to a significant burden of missing data at extent of
379 resection, detailed pathological results (Ki-67, somatostatin receptor subtype 2 expression, AIP
380 expression, and granularity), dates of secondary treatment, and continuous follow-ups. Although
381 we have the last follow-up record, which might underestimate the time to recurrence and
382 therefore limit us to further investigate predictors of long-term outcomes. Finally, as evidenced
383 by the low median age of our cohort, the majority of patients who contributed to this database
384 through online submission were young, likely reflecting age-related biases in adopting an
385 electronic reporting platform. Strategies to expand access and ease of data accrual from more
386 diverse populations, both in demographics and age, may further diversify the value of this
387 clinical database in the future.

388

389 **Conclusions**

390 We present the largest nation-wide analysis of clinical features and surgical outcomes of
391 acromegaly patients in China, driven from a patient-reported database. We highlight that higher
392 preoperative GH levels, giant adenomas, and greater extent of tumor invasiveness are associated
393 with a lower likelihood of biochemical remission at 3-months after surgery, while preoperative
394 medical therapy increases the chance of remission. Importantly, we have established the
395 effectiveness and potential of a patient-reported database in advancing neuroendocrinological
396 research.

397

398

399

400 **Disclosures**

401 The authors report no conflict of interest concerning the materials or methods used in this study
402 or the findings specified in this paper.

403

404 **Acknowledgments**

405 The authors would like to thank all the patients and families and their providers who collaborated
406 with the establishment of CAPA database. We are grateful for the collaboration with the Chinese
407 Association of Patients with Acromegaly (CAPA). We also thank Mr. Hao Luo (Warwick
408 Business School, United Kingdom) for creating the China heat-map for the geographic
409 distribution of acromegaly patients.

410

411 **Author Contributions**

412 Conception and design: WL Chen, HJ Wang, and WL Bi. Acquisition of data: WL Chen and HJ
413 Wang. Analysis and Interpretation of data: all authors. Drafting the article: S Yao, S Tavakol,
414 and WL Bi. Critically revising the article: S Yao, S Tavakol, F Akter, MP Catalino, ER Laws,
415 WL Bi, and HJ Wang. Reviewed submitted version of manuscript: all authors. Approved the
416 final version of manuscript on behalf of all authors: HJ Wang. Statistical analysis: S Yao, S
417 Tavakol, WL Bi. Graphic visualization: S Yao. Clinical diagnosis and radiological identification:
418 WL Chen, J Luo, and ZG Mao. Administrative/technical/material support: WL Chen, ZG Mao,
419 YH Zhu, and HJ Wang. Study supervision: HJ Wang and WL Bi.

420

421 **References:**

- 422 1. Katznelson L, Laws ER, Melmed S, et al. Acromegaly: An Endocrine Society Clinical
423 Practice Guideline. *J Clin Endocrinol Metab.* 2014;99(11):3933-3951. doi:10.1210/jc.2014-
424 2700
- 425 2. Colao A, Grasso LFS, Giustina A, et al. Acromegaly. *Nat Rev Dis Primers.* 2019;5(1):20.
426 doi:10.1038/s41572-019-0071-6
- 427 3. Cook DM, Ezzat S, Katznelson L, et al. AACE Medical Guidelines for Clinical Practice for
428 the diagnosis and treatment of acromegaly. *Endocr Pract.* 2004;10(3):213-225.
429 doi:10.4158/EP.10.3.213
- 430 4. Abreu A, Tovar AP, Castellanos R, et al. Challenges in the diagnosis and management of
431 acromegaly: a focus on comorbidities. *Pituitary.* 2016;19:448-457. doi:10.1007/s11102-
432 016-0725-2
- 433 5. Melmed S. Acromegaly. *New England Journal of Medicine.* 2006;355(24):2558-2573.
434 doi:10.1056/NEJMra062453
- 435 6. Lugo G, Pena L, Cordido F. Clinical Manifestations and Diagnosis of Acromegaly. *Int J*
436 *Endocrinol.* 2012;2012. doi:10.1155/2012/540398
- 437 7. Chanson P, Salenave S. Acromegaly. *Orphanet J Rare Dis.* 2008;3:17. doi:10.1186/1750-
438 1172-3-17

- 439 8. Chinese Society of Endocrinology, Chinese Neurosurgical Society, and Chinese Pituitary
440 Adenoma Cooperative Group. Chinese guideline of acromegaly diagnosis and management
441 (2013). *Natl Med J China*. 2013;93(27):2106-2111. doi:10.3760/cma.j.issn.0376-
442 2491.2013.27.005
- 443 9. Knosp E, Steiner E, Kitz K, Matula C. Pituitary adenomas with invasion of the cavernous
444 sinus space: a magnetic resonance imaging classification compared with surgical findings.
445 *Neurosurgery*. 1993;33(4):610-617. doi:10.1227/00006123-199310000-00008
- 446 10. Mooney MA, Hardesty DA, Sheehy JP, et al. Interrater and intrarater reliability of the Knosp
447 scale for pituitary adenoma grading. *Journal of Neurosurgery*. 2017;126(5):1714-1719.
448 doi:10.3171/2016.3.JNS153044
- 449 11. Molitch ME. Diagnosis and Treatment of Pituitary Adenomas: A Review. *JAMA*.
450 2017;317(5):516-524. doi:10.1001/jama.2016.19699
- 451 12. Meng Q, Fang H, Liu X, Yuan B, Xu J. Consolidating the social health insurance schemes in
452 China: towards an equitable and efficient health system. *The Lancet*.
453 2015;386(10002):1484-1492. doi:10.1016/S0140-6736(15)00342-6
- 454 13. R Core Team. R: A language and environment for statistical computing. *R Foundation for*
455 *Statistical Computing, Vienna, Austria*. Published online 2019. <https://www.R-project.org/>.
- 456 14. Rick J, Jahangiri A, Flanigan PM, et al. Growth hormone and prolactin-staining tumors
457 causing acromegaly: a retrospective review of clinical presentations and surgical outcomes.
458 *Journal of Neurosurgery*. 2018;131(1):147-153. doi:10.3171/2018.4.JNS18230

- 459 15. Duan L, Zhu H, Xing B, Gu F. Prolonged preoperative treatment of acromegaly with
460 Somatostatin analogs may improve surgical outcome in patients with invasive pituitary
461 macroadenoma (Knosp grades 1–3): a retrospective cohort study conducted at a single
462 center. *BMC Endocr Disord.* 2017;17(1):55. doi:10.1186/s12902-017-0205-3
- 463 16. Hoskuldsdottir GT, Fjalldal SB, Sigurjonsdottir HA. The incidence and prevalence of
464 acromegaly, a nationwide study from 1955 through 2013. *Pituitary.* 2015;18(6):803-807.
465 doi:10.1007/s11102-015-0655-4
- 466 17. Dekkers OM, Biermasz NR, Pereira AM, Romijn JA, Vandenbroucke JP. Mortality in
467 Acromegaly: A Metaanalysis. *J Clin Endocrinol Metab.* 2008;93(1):61-67.
468 doi:10.1210/jc.2007-1191
- 469 18. Holdaway IM, Rajasoorya RC, Gamble GD. Factors Influencing Mortality in Acromegaly. *J*
470 *Clin Endocrinol Metab.* 2004;89(2):667-674. doi:10.1210/jc.2003-031199
- 471 19. Guo X, Gao L, Zhang S, et al. Cardiovascular System Changes and Related Risk Factors in
472 Acromegaly Patients: A Case-Control Study. *Int J Endocrinol.* 2015;2015:573643.
473 doi:10.1155/2015/573643
- 474 20. Jane JA, Starke RM, Elzoghby MA, et al. Endoscopic Transsphenoidal Surgery for
475 Acromegaly: Remission Using Modern Criteria, Complications, and Predictors of Outcome.
476 *J Clin Endocrinol Metab.* 2011;96(9):2732-2740. doi:10.1210/jc.2011-0554

- 477 21. Yang C, Li G, Jiang S, Bao X, Wang R. Preoperative Somatostatin Analogues in Patients
478 with Newly-diagnosed Acromegaly: A Systematic Review and Meta-analysis of
479 Comparative Studies. *Sci Rep*. 2019;9(1):1-9. doi:10.1038/s41598-019-50639-6
- 480 22. Park SH, Ku CR, Moon JH, Kim EH, Kim SH, Lee EJ. Age- and Sex-Specific Differences as
481 Predictors of Surgical Remission Among Patients With Acromegaly. *J Clin Endocrinol*
482 *Metab*. 2018;103(3):909-916. doi:10.1210/jc.2017-01844
- 483 23. Minniti G, Jaffrain-Rea M-L, Esposito V, Santoro A, Tamburrano G, Cantore G. Evolving
484 criteria for post-operative biochemical remission of acromegaly: can we achieve a
485 definitive cure? An audit of surgical results on a large series and a review of the literature.
486 *Endocr Relat Cancer*. 2003;10(4):611-619. doi:10.1677/erc.0.0100611
- 487 24. Fernandez-Rodriguez E, Casanueva FF, Bernabeu I. Update on prognostic factors in
488 acromegaly: Is a risk score possible? *Pituitary*. 2015;18(3):431-440. doi:10.1007/s11102-
489 014-0574-9
- 490 25. Kaltsas GA, Isidori AM, Florakis D, et al. Predictors of the outcome of surgical treatment in
491 acromegaly and the value of the mean growth hormone day curve in assessing
492 postoperative disease activity. *J Clin Endocrinol Metab*. 2001;86(4):1645-1652.
493 doi:10.1210/jcem.86.4.7398
- 494 26. Biermasz NR, Dekker FW, Pereira AM, et al. Determinants of Survival in Treated
495 Acromegaly in a Single Center: Predictive Value of Serial Insulin-Like Growth Factor I
496 Measurements. *J Clin Endocrinol Metab*. 2004;89(6):2789-2796. doi:10.1210/jc.2003-
497 032041

- 498 27. Tindall GT, Oyesiku NM, Watts NB, Clark RV, Christy JH, Adams DA. Transsphenoidal
499 adenomectomy for growth hormone-secreting pituitary adenomas in acromegaly: outcome
500 analysis and determinants of failure. *J Neurosurg*. 1993;78(2):205-215.
501 doi:10.3171/jns.1993.78.2.0205
- 502 28. Sun H, Brzana J, Yedinak CG, Gultekin SH, Delashaw JB, Fleseriu M. Factors Associated
503 with Biochemical Remission after Microscopic Transsphenoidal Surgery for Acromegaly. *J*
504 *Neurol Surg B*. 2014;75(1):47-52. doi:10.1055/s-0033-1354578
- 505 29. Laws ER, Piepgras DG, Randall RV, Abboud CF. Neurosurgical management of acromegaly.
506 Results in 82 patients treated between 1972 and 1977. *J Neurosurg*. 1979;50(4):454-461.
507 doi:10.3171/jns.1979.50.4.0454
- 508 30. Nomikos P, Buchfelder M, Fahlbusch R. The outcome of surgery in 668 patients with
509 acromegaly using current criteria of biochemical 'cure.' *European Journal of*
510 *Endocrinology*. 2005;152(3):379-387. doi:10.1530/eje.1.01863
- 511 31. Antunes X, Ventura N, Camilo GB, et al. Predictors of surgical outcome and early criteria of
512 remission in acromegaly. *Endocrine*. 2018;60(3):415-422. doi:10.1007/s12020-018-1590-8
- 513 32. Laws ER. Surgery for acromegaly: evolution of the techniques and outcomes. *Rev Endocr*
514 *Metab Disord*. 2008;9(1):67-70. doi:10.1007/s11154-007-9064-y
- 515 33. Mao Z, Zhu Y, Tang H, et al. Preoperative lanreotide treatment in acromegalic patients with
516 macroadenomas increases short-term postoperative cure rates: a prospective, randomised
517 trial. *European Journal of Endocrinology*. 2010;162(4):661-666. doi:10.1530/EJE-09-0908

- 518 34. Nunes VS, Correa JMS, Puga MES, Silva EMK, Boguszewski CL. Preoperative
519 somatostatin analogues versus direct transsphenoidal surgery for newly-diagnosed
520 acromegaly patients: a systematic review and meta-analysis using the GRADE system.
521 *Pituitary*. 2015;18(4):500-508. doi:10.1007/s11102-014-0602-9
- 522 35. Albarel F, Castinetti F, Morange I, et al. Pre-surgical medical treatment, a major prognostic
523 factor for long-term remission in acromegaly. *Pituitary*. 2018;21(6):615-623.
524 doi:10.1007/s11102-018-0916-0
- 525 36. Shen M, Shou X, Wang Y, et al. Effect of presurgical long-acting octreotide treatment in
526 acromegaly patients with invasive pituitary macroadenomas: a prospective randomized
527 study. *Endocr J*. 2010;57(12):1035-1044. doi:10.1507/endocrj.k10e-203
- 528 37. Vance ML, Laws ER. Role of medical therapy in the management of acromegaly.
529 *Neurosurgery*. 2005;56(5):877-885.
- 530 38. Asha MJ, Takami H, Velasquez C, et al. Long-term outcomes of transsphenoidal surgery for
531 management of growth hormone-secreting adenomas: single-center results. *Journal of*
532 *Neurosurgery*. Published online October 2019:1-11. doi:10.3171/2019.6.JNS191187
- 533 39. Yamada S, Fukuhara N, Oyama K, Takeshita A, Takeuchi Y. Repeat transsphenoidal surgery
534 for the treatment of remaining or recurring pituitary tumors in acromegaly. *Neurosurgery*.
535 2010;67(4):949-956. doi:10.1227/NEU.0b013e3181ec4379
- 536

537 **Table 1. Demographics and clinical presentation (N=575)**

Categories	Distribution
Mean age (years), mean \pm SD	37.3 \pm 10.3
Male / Female	235/340
Disease duration (years), median (IQR)	5 (2.5-8.0)
Follow-up after initial diagnosis (months), median (IQR)	54 (30-86)
Follow-up after initial treatment (months), median (IQR)	32 (13-61)
Clinical symptoms and signs, n (%)	
<i>Enlarged nose and prognathism</i>	560 (97.4)
<i>Overgrowth of extremities</i>	537 (93.4)
<i>Menstrual disturbance (female)</i>	227 (66.8)
<i>Snoring or sleep apnea</i>	358 (62.3)
<i>Headache</i>	336 (58.4)
<i>Hyperhidrosis</i>	323 (56.2)
<i>Hypertrophy of frontal bones</i>	287 (49.9)
<i>Visual field abnormalities</i>	283 (49.2)
<i>Cardiovascular disease</i>	230 (40.0)
<i>Impaired glucose tolerance</i>	178 (31.0)
<i>Hypertrichosis</i>	197 (34.3)
<i>Jaw malocclusion</i>	139 (24.2)
<i>Osteoporosis</i>	130 (22.6)
<i>Colonic polyps</i>	94 (16.3)
<i>Arthritis</i>	91 (15.8)
<i>Galactorrhea</i>	88 (15.3)
<i>Colonic cancer</i>	4 (0.7%)
Resident area	
<i>Large city</i>	252 (43.8)
<i>Medium city</i>	206 (35.8)
<i>Small city/town</i>	117 (20.4)
Insurance type	
<i>Urban Employee Basic Medical Insurance</i>	366 (63.7)
<i>New Cooperative Medical Scheme</i>	130 (22.6)
<i>Urban Resident Basic Medical Insurance</i>	79 (13.7)

538

539 **Abbreviations:** IQR, interquartile range; SD, standard deviation.

540

541 **Table 2. Tumor characteristics and treatment (N=575)**

542

Categories	Distribution
Initial biochemical levels	
<i>GH (μg/L), mean ± SD</i>	26.8 ± 26.1
<i>IGF-1 (μg/L), mean ± SD</i>	781.5 ± 290.8
3-month biochemical levels	
<i>GH (μg/L), median, (IQR)</i>	4.32 (1.3 – 11.2)
<i>IGF-1 (μg/L), mean ± SD</i>	572.3 ± 289.7
Tumor size, n (%)	
<i>Microadenomas (< 1cm)</i>	96 (16.7)
<i>Macroadenomas (1 - 4cm)</i>	421 (73.2)
<i>Giant adenomas (≥ 4cm)</i>	58 (10.1)
Knosp score, n (%)	
<i>Score 0</i>	58 (10.1)
<i>Score 1</i>	110 (19.1)
<i>Score 2</i>	54 (9.4)
<i>Score 3</i>	270 (47.0)
<i>Score 4</i>	83 (14.4)
Apoplexy, n (%)	
	55 (9.6)
Preoperative medication, n (%)	
	125 (21.7)
Initial treatment, n (%)	
<i>Radiotherapy</i>	8 (1.3)
<i>Medication</i>	21 (3.7)
<i>Surgery</i>	546 (95)
Pathology, n (%)	
<i>GH</i>	445 (81.5)
<i>GH + PRL</i>	75 (13.7)
<i>GH + TSH</i>	5 (0.9)
<i>GH + ACTH</i>	3 (0.6)
<i>GH + (> 2 hormones)</i>	18 (3.3)
Postoperative complications, n* (%)	
<i>Transient hyponatremia</i>	142 (26.0)
<i>Transient diabetes insipidus</i>	101 (18.5)
<i>Cerebrospinal fluid leak</i>	37 (6.8)
<i>Meningitis</i>	2 (0.4)
<i>ICA injury (intraoperative)</i>	1 (0.2)

543 **Abbreviations:** ACTH, Adrenocorticotrophic hormone; GH, growth hormone; ICA, intracranial artery;
544 IGF-1, insulin-like growth factor 1; IQR, interquartile range; PRL, prolactin; SD, standard deviation;
545 TSH, thyroid stimulating hormone.

546 **Table 3. Comparison of demographics and clinical presentation between 3-month non-**
 547 **remission and remission cases**

Categories	Surgical remission		P-value ^d
	No (n = 337)	Yes (n = 209)	
Age (years), mean ± SD	36.0 ± 9.7	38.2 ± 10.1	0.08
Sex			0.966
<i>Male</i>	137 (62.0)	84 (38.0)	
<i>Female</i>	200 (61.5)	125 (39.5)	
Disease duration (years), median (IQR)	4 (2 - 8)	5 (2-8)	0.361
Initial GH levels (µg/L), median (IQR)	20.0 (12.0 – 40.0)	14.6 (10.2 – 29.9)	0.003
Tumor size , n (%)			< 0.001
<i>Microadenomas</i>	32 (36.4)	56 (63.6)	
<i>Macroadenomas</i>	255 (63.6)	146 (36.4)	
<i>Giant adenomas</i>	50 (87.7)	7 (12.3)	
Knosp score , n (%)			< 0.001
0-2	84 (42.9)	112 (57.1)	
3-4	253 (72.3)	97 (27.7)	
Apoplexy , n (%)	31 (62.0)	19 (38.0)	0.966
Preoperative medication , n (%)	67 (53.6)	58 (46.4)	0.08
Surgical approach , n (%)			0.262
<i>Transcranial surgery</i>	22 (78.6)	6 (21.4)	
<i>Microscopic TSS</i>	131 (62.7)	78 (37.3)	
<i>Endoscopic TSS</i>	184 (59.5)	125 (40.5)	
Pathology , n (%)			0.727
<i>GH</i>	269 (60.5)	176 (39.5)	
<i>GH + ACTH</i>	2 (66.7)	1 (33.3)	
<i>GH + PRL</i>	49 (65.3)	26 (34.7)	
<i>GH + TSH</i>	3 (60.0)	2 (40.0)	
<i>GH + (> 2 hormones)</i>	14 (77.8)	4 (22.2)	
City type of residence			0.521
<i>Large city</i>	138 (58.7)	97 (41.3)	
<i>Medium city</i>	131 (65.5)	69 (34.5)	
<i>Small city/town</i>	68 (61.3)	43 (38.7)	
Insurance type			0.721
<i>Urban Employee Basic Medical Insurance</i>	211 (61.9)	130 (38.1)	
<i>New Cooperative Medical Scheme</i>	83 (64.3)	46 (35.7)	
<i>Urban Resident Basic Medical Insurance</i>	43 (56.6)	33 (43.4)	

548 ^d **FDR correction**

549 **Abbreviations:** ACTH, Adrenocorticotrophic hormone; eTSS, endonasal transsphenoidal surgery;
 550 GH, growth hormone; IQR, interquartile range; PRL, prolactin; SD, standard deviation; TSH, thyroid
 551 stimulating hormone.

552 **Table 4. Multivariate predictors of 3-month surgical remission in acromegaly patients**

Variable	Logistic regression analysis		
	OR	95% CI	P value
Preoperative GH Level ($\mu\text{g/L}$)^a			
12 – 28	0.61	0.39 - 0.96	0.031
> 28	0.56	0.35 - 0.90	0.016
Tumor size^b			
<i>Macroadenoma</i>	0.57	0.33 - 0.97	0.041
<i>Giant adenoma</i>	0.17	0.06 - 0.44	0.0005
Knosp score: 3-4^c	0.39	0.25 - 0.59	< 0.0001
Preoperative medication usage	2.16	1.38 - 3.39	0.0008

553

554

555 ^aReference level <12 $\mu\text{g/L}$

556 ^bReference: Microadenoma

557 ^cReference: Knosp score 0-2

558 **Abbreviations:** CI, confidence interval; GH, growth hormone; OR, odds ratio.

559 **Figure Legends**

560 **Figure 1.** Treatment pathways among patients in the CAPA cohort.

561

562 **Figure 2.** (A) Distribution of cases by Knosp classification and tumor size. (B & C) The
563 association of preoperative growth hormone (GH) levels compared with tumor size and Knosp
564 score.

565

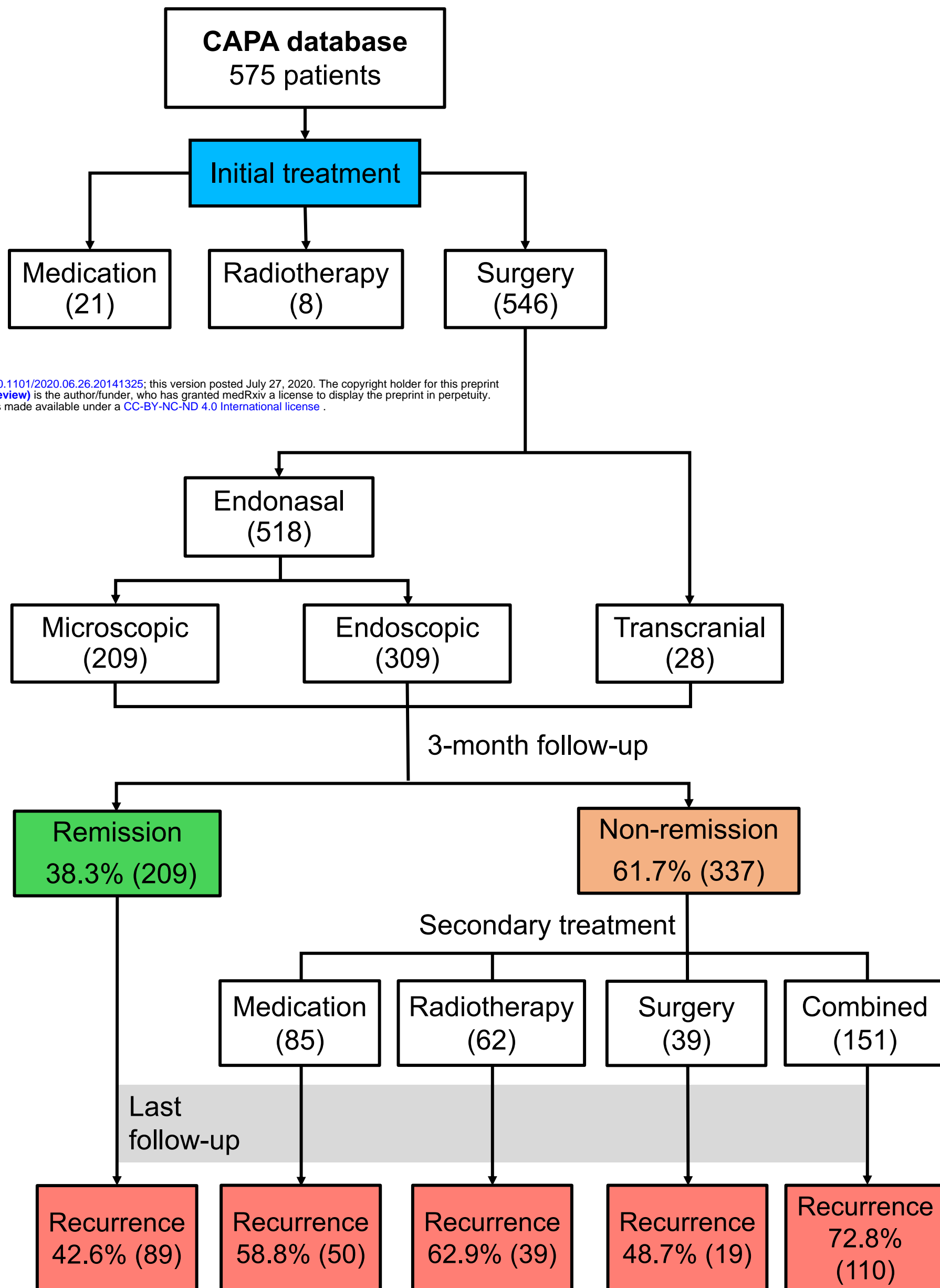
566 **Figure 3.** Adjusted odds ratios (OR) and 95% confidence intervals for predictors of biochemical
567 remission at 3 months ($p < 0.05$). ^aReference level: $< 12 \mu\text{g/L}$; ^bReference: Microadenoma;
568 ^cReference: Knosp score 0-2.

569

570

571

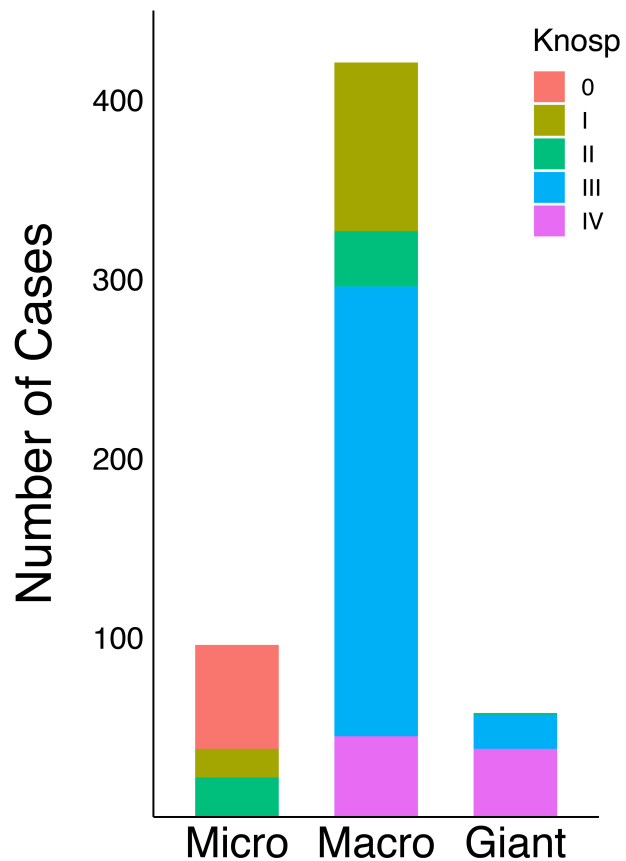
572 **Supplemental Material S1.** The geographic distribution of acromegaly patients in the China
573 Acromegaly Patient Association (CAPA) database between 1998 and 2018, across 23 provinces,
574 4 autonomous regions, 4 municipalities, and 2 Special Administrative Regions (Hong Kong and
575 Macau) in China.



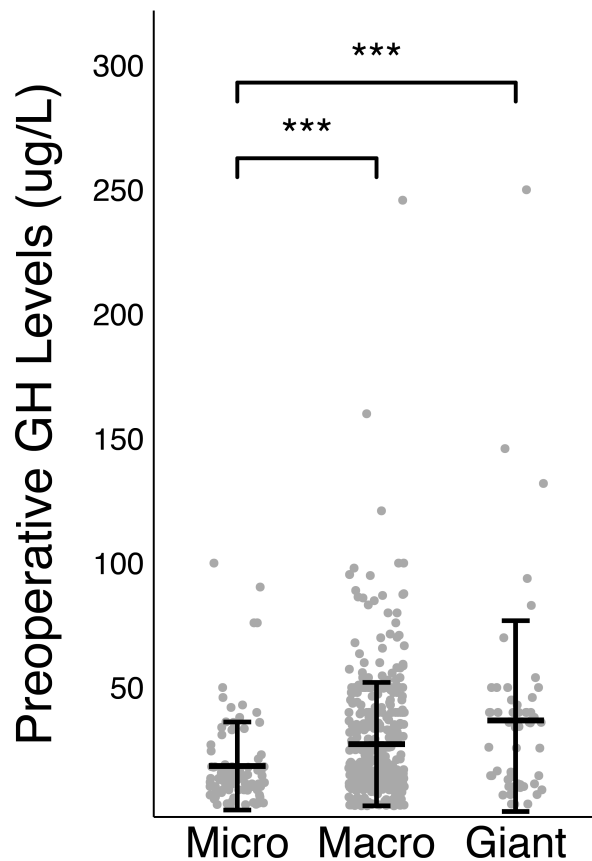
medRxiv preprint doi: <https://doi.org/10.1101/2020.06.26.20141325>; this version posted July 27, 2020. The copyright holder for this preprint (which was not certified by peer review) is the author/funder, who has granted medRxiv a license to display the preprint in perpetuity. It is made available under a [CC-BY-NC-ND 4.0 International license](https://creativecommons.org/licenses/by-nc-nd/4.0/).

A

Tumor Size By Knosp Class

**B**

Tumor Size

**C**

Knosp Classification

