

1 Association between maternal obesity and metabolic disorders
2 and congenital heart defects in the offspring: a literature review

3

4 Gitte Hedermann*¹, Paula L Hedley¹, Ida N Thagaard^{1,2}, Lone Krebs^{3,4}, Thorkild IA Sørensen^{5,6}, Charlotte Kvist
5 Ekelund^{4,7}, Michael Christiansen^{1,8}

6

7 ¹ Department for Congenital Disorders, Danish National Biobank and Biomarkers, Statens Serum Institut, Copenhagen,
8 Denmark

9 ² Department of Obstetrics and Gynaecology, Copenhagen University Hospital, Rigshospitalet, Copenhagen, Denmark

10 ³ Department of Obstetrics and Gynaecology, Copenhagen University Hospital, Amager and Hvidovre Hospital,
11 Denmark

12 ⁴ Department of Clinical Medicine, University of Copenhagen, Copenhagen, Denmark

13 ⁵ Department of Public Health, Section of Epidemiology, University of Copenhagen, Copenhagen, Denmark

14 ⁶ Section of Metabolic Genetics, Faculty of Health and Medical Sciences, The Novo Nordisk Foundation Center for
15 Basic Metabolic Research, University of Copenhagen, Copenhagen, Denmark

16 ⁷ Center of Fetal Medicine, Department of Obstetrics, Copenhagen University Hospital, Rigshospitalet, Copenhagen,
17 Denmark

18 ⁸ Department of Biomedical Sciences, University of Copenhagen, Copenhagen, Denmark

19

20 Keywords (MeSH): metabolic syndrome; heart defects, congenital; Body Mass Index; Hypertension,
21 pregnancy-induced; Diabetes Mellitus

NOTE: This preprint reports new research that has not been certified by peer review and should not be used to guide clinical practice.

22 Running title: Maternal obesity and metabolic disorders and CHDs in the offspring

23 Acknowledgements: Thank you to the researchers who replied to emails requesting extra information on

24 their studies and for prompt replies.

25 Funding information: This study was supported by The Danish Children Heart Foundation (18-R109-A5193-

26 26043). The funders had no role in study design, data collection and analysis, decision

27 to publish, or preparation of the manuscript.

28 Corresponding author*: Department for Congenital Disorders

29 Danish National Biobank and Biomarkers

30 Statens Serum Institut

31 Artillerivej 5

32 2300 Copenhagen

33 Denmark

34 gihc@ssi.dk

35 Conflict of interests: All authors have completed the ICMJE uniform disclosure form at

36 http://www.icmje.org/coi_disclosure.pdf and declared no financial relationships with

37 any organizations that might have an interest in the submitted work in the previous

38 three years, and no other relationships or activities that could appear to have

39 influenced the submitted work.

40

41

42 **Summary**

43 Congenital heart defects (CHDs) are the most common congenital malformation and will, in severe cases, have a
44 serious impact on neonatal mortality and morbidity. The aetiology of CHDs is complex. Large cohort studies have
45 reported an association between increased risk of CHDs in the offspring and individual maternal metabolic disorders
46 such as diabetes, hypertension, preeclampsia, and obesity. All conditions that can be related to insulin resistance and
47 possibly metabolic syndrome (MetS). The aim of this review is to evaluate the existing evidence on the association
48 between maternal metabolic disorders, defined as obesity, diabetes, hypertension, preeclampsia, dyslipidaemia, and
49 MetS, or combinations thereof and CHDs in the offspring. A literature search was performed using PubMed and
50 Embase databases. Of the 2,076 potentially relevant identified studies, 30 qualified for inclusion. Only one study dealt
51 with the combination of more than one maternal metabolic condition as risk factor for CHDs in the offspring. All other
52 studies investigated the individual metabolic disorders and their association with CHDs. Some disorders (chronic
53 hypertension, gestational diabetes, and obesity) increased risk of CHDs marginally whereas pregestational diabetes
54 and early-onset preeclampsia were highly associated with CHDs. Future studies on the combination of several
55 metabolic disorders in the same pregnancy and their association with CHDs are needed.

56

57 Abbreviations:

58 CHDs, congenital heart defects; MetS, metabolic syndrome; PE, preeclampsia; BMI, body mass index; GDM,
59 gestational diabetes; DM2, diabetes type 2; DM1, diabetes type 1; ICD-10, International Classification of Diseases, 10th
60 revision; NOS, Newcastle-Ottawa Scale; OR, odds ratios; RR, relative risks; PR, prevalence ratios; CI, 95% confidence
61 interval; aOR/aRR/aPR, adjusted; AVSD, atrioventricular septal defects; RVOTO, right ventricular outflow tract
62 obstruction; VSD, ventricular septal defects; ASD, atrial septal defect; NBDPS, National Birth Defects Prevention Study;
63 CoA, coarctation of the aorta.

64 **1. Introduction**

65 Congenital heart defects (CHDs) are structural malformations of the heart and/or the great intrathoracic vessels. They
66 are the most frequent congenital malformation (1) and birth prevalence is estimated to be around 8-10 per 1,000 live
67 births worldwide (1–3). The most critical and severe defects, major CHDs, (prevalence of 0.14% in Denmark) have a
68 serious impact on neonatal mortality and morbidity, and frequently result in neonatal heart failure or circulatory
69 collapse requiring acute surgery (3). Whereas, other types of CHDs like bicuspid aortic valve and transient septal heart
70 defects are far more frequent but more often with limited clinical significance.

71 Population-based prevalence of CHDs are difficult to determine, but Denmark's electronic registers are a useful
72 resource for ascertaining the number of diagnosed cases as well as treatment complications and outcomes. Using
73 such data, Lytzen *et al.* found that 75% of children with major CHDs, born in Denmark 1996-2013, underwent surgery.
74 Furthermore, the 1-year mortality rate for this group was 19.6%, although the rate decreased during the study period
75 (4). Improved infant treatment has led to a decrease in infant mortality and an increase in children and adults living
76 with CHDs (5–7). Indeed, a Canadian study estimated that adults account for two thirds of patients with CHDs (8). The
77 mortality rate is increased in adults with CHDs compared to the general population with the majority of patients with
78 CHDs succumbing to cardiovascular causes such as arrhythmia and heart failure (9).

79 The aetiology of CHDs is complex and poorly understood. An identifiable underlying cause (genetic and/or
80 environmental) is present in 20-30% of CHDs (10). For instance, 8-10% of CHDs can be attributed to chromosomal
81 aberrations (e.g., DiGeorge syndrome, Down syndrome, Turner syndrome, etc.) (10,11); while 5-15% may be the result
82 of single-nucleotide or pathogenic copy number variants (10,12). Additionally, viral infections in pregnancy (e.g.,
83 rubella), as well as exposure to certain teratogenic substances (e.g., alcohol or antiepileptic drugs) (13) may cause
84 CHDs if the foetus is exposed at a critical point in development.

85 The normal pregnancy is an adaptation between the maternal metabolism and foetal development. Differentiation of
86 cardiac tissues begins in the third week of gestation, and by week 8, the foetal heart has undergone major changes,
87 and will resemble the postnatal heart in structure and function (14). Thus, the maternal-foetal interaction in first
88 trimester is likely to be the most relevant for an association between maternal metabolism and CHDs. In first
89 trimester, the foetus does not have the ability to secrete insulin which may result in foetal hyperglycaemia in the

90 event of relative maternal insulin resistance (15). The significance of foetal hyperglycaemia has not been
91 demonstrated in humans, however, animal models have shown that in embryos of chicks and rodents, exogenous
92 glucose may cause a variety of malformations (16,17). Furthermore, increasingly worse glycaemic control around
93 conception in women with diabetes type 1 (DM1) was associated with a progressively increased risk of CHDs in the
94 offspring (18).

95 Large cohort studies from Scandinavia and North America have reported an association between increased risk of
96 CHDs and maternal metabolic disorders such as diabetes (19–21), chronic hypertension (22,23), preeclampsia (PE)
97 (24,25), and obesity (26,27). All metabolic disorders that could be associated with an underlying insulin resistance and
98 possibly the metabolic syndrome (MetS) (28,29).

99 MetS comprises a cluster of metabolic disorders in combination, usually any three of the following: abdominal obesity,
100 insulin resistance, dyslipidaemia and hypertension (28,30). It is commonly described in a non-pregnant population as a
101 risk factor for diabetes type 2 (DM2) and cardiovascular disease. Only one study has assessed MetS in pregnant
102 women and reported an incidence of 12.3% at 15 weeks' gestation (31) using the International Diabetes Federation
103 criteria (30). Since MetS is more prevalent with increasing age (28), it seems plausible that obesity, diabetes,
104 hypertension, PE and dyslipidaemia as individual conditions, or more likely in combination, during pregnancy are
105 related to MetS (28,29). Furthermore, the same conditions have been associated with increased risk of CHDs in the
106 offspring (19–27). We hypothesize that the combination of several maternal metabolic disorders (defined as obesity,
107 diabetes, hypertension, PE and dyslipidaemia), all related to MetS, could be associated with cumulative risk of CHDs in
108 the offspring.

109 The aim of this review is to evaluate the literature of associations between maternal metabolic disorders (obesity,
110 diabetes, hypertension, PE, dyslipidaemia, or MetS) or combinations thereof and CHDs in the offspring. Furthermore,
111 to point out gaps in current knowledge and make recommendations for future research.

112

113 **2. Methods**

114 **2.1 Search strategy**

115 A literature search of papers published between January 1, 1990 and October 6, 2019 was conducted using PubMed
116 and Embase. MetS was described by G.M. Reaven in 1988 as an “insulin resistance syndrome” (32), therefore the
117 literature search was limited to publications thereafter. The search strategy used keywords that combined CHDs and
118 pregnancies with different maternal metabolic disorders (overweight/obesity, hypertension, PE, diabetes,
119 dyslipidaemia and/or MetS). More details about the literature search can be found in Appendix 1. Subsequently,
120 reference lists were reviewed for additional relevant studies.

121

122 2.2 Exposures, outcomes and definitions

123 The exposures of interest were maternal overweight and obesity, hypertension, PE, diabetes (diabetes type 1 (DM1),
124 DM2 or GDM), dyslipidaemia, and/or MetS during pregnancy. Maternal body mass index (BMI) (weight in kilograms
125 divided by the square of the height in meters (kg/m^2)) was defined as pre-pregnancy or early-pregnancy BMI
126 measured in first trimester. The World Health Organization has defined BMI groups (BMI 18.5–24.9: normal weight;
127 BMI 25.0–29.9: overweight; BMI 30.0–34.9: obesity class I; BMI 35.0–39.9: obesity class II; BMI ≥ 40 : obesity class III)
128 (33). The outcome of interest was CHDs defined as structural malformations of the heart chambers, heart valves, great
129 arteries and septal defects, corresponding to DQ20-26 in the World Health Organization International Classification of
130 Diseases (ICD-10) or diagnoses referable to these. The CHD diagnoses are described as “any CHD” for the whole group
131 of diseases, “major CHDs” for a group of the most critical and severe CHD diagnoses (Table 1) or as specific CHD
132 diagnoses. Studies could include terminated pregnancies, miscarriages, stillbirths and/or live births.

133

134 2.3 Eligibility criteria

135 Two different authors (GH, PLH and/or INT) screened all titles and abstracts individually. Studies were initially eligible
136 if they met the following criteria: 1. Studies were published in English; 2. Studies were case-control or cohort studies;
137 3. The exposures of interest were maternal overweight or obesity, maternal hypertension or PE, maternal diabetes,
138 maternal dyslipidaemia, and/or maternal MetS; and 4. The outcome of interest was CHDs in the offspring.

139

140 2.4 Quality assessment

141 One author (GH) conducted the study selection and quality assessment based on a full-text review. Any doubts were
142 resolved by discussion with at least one co-author. The Newcastle-Ottawa Scale (NOS) was used to assess the quality
143 of eligible studies (34). Using this tool, each study was judged on eight items, arranged into three categories: selection
144 of cohorts or cases and controls; comparability of cohorts or cases and controls; and ascertainment of outcome or
145 exposure. Highest quality studies could be awarded nine stars. If a study received seven or more stars, it was
146 considered of high methodological quality and included in the review (34).

147 Results are presented as odds ratios (OR), relative risks (RR) or prevalence ratios (PR) with 95% confidence interval (CI)
148 unless other is stated.

149

150 3. Results

151 3.1 Study identification and selection

152 The selection of studies is described in Figure 1. In the event of multiple publications using the same data, we included
153 the study that provided the most comprehensive information. A total of 30 publications were included in the review
154 (Table 1). Among these, none was about maternal MetS (as a diagnostic category) and CHDs, seven publications dealt
155 with maternal hypertension or PE and CHDs (22–25,35–37), 13 dealt with maternal overweight or obesity and CHDs
156 (22,26,27,38–47), 16 dealt with maternal diabetes and CHDs (18–22,36,37,40,48–55), and none were about
157 dyslipidaemia and CHDs. Three studies investigated more than one maternal metabolic disorder (but not in
158 combination) (22,36,37), and only one study assessed a combination of two conditions and the risk of CHDs (40).
159 Figure 2 summarizes the content of the included studies.

160

161 3.2 Maternal chronic hypertension and CHDs in the offspring

162 Two large nationwide population-based cohort studies reported a significant association between maternal chronic
163 hypertension and any CHDs: one was a Canadian study by Liu et al. including 2.3 million mother-infant pairs, among
164 these 0.6% had chronic hypertension, and found an adjusted OR (aOR) 1.81; CI 1.61-2.03 (22). The other was a study
165 from Taiwan that included 1.4 million pregnancies and reported an aOR 1.87; CI 1.69-2.07 (36). Furthermore, Liu et al.
166 found a significant increased risk of five subtypes of CHDs when the mother had chronic hypertension: conotruncal
167 defects (aOR 1.71; CI 1.20–2.47), atrioventricular septal defects (AVSD) (aOR 1.97; CI 1.07–3.64), right ventricular
168 outflow tract obstruction (RVOTO) (aOR 3.17; CI 1.39–7.81), ventricular septal defects (VSD) (aOR 1.52; CI 1.11–2.09),
169 and atrial septal defect (ASD) (aOR 3.12; CI 2.41–4.03), and were not able to find an association for other subtypes
170 (heterotaxia and left ventricular outflow tract defects) (22). A Hungarian case-control study with 3,562 live-born cases
171 with CHDs reported a significant association between chronic hypertension and three subtypes of CHDs: VSD (OR 1.31;
172 CI 1.08–1.58), AVSD (OR 2.47; OR 1.19–4.60), and common truncus (OR 2.75; CI 1.04–6.06), but did not find an
173 association for a number of other subtypes of CHDs (Table 1) (37). None of these studies reported potential
174 antihypertensive use by the mothers.

175 In an American multi-site, population-based case-control study with 21,762 participants (National Birth Defects
176 Prevention Study, NBDPS), Fisher et al. found use of antihypertensive medication (centrally acting antiadrenergics, β -
177 blockers, renin–angiotensin system blockers, calcium channel blockers, and diuretics) from one month before
178 conception through the third month of pregnancy to be associated with an increased risk of both any CHD (OR 1.59; CI
179 1.23–2.05) and five subtypes of CHDs (23). Although, they observed statistically significant estimates for coarctation of
180 the aorta (CoA), pulmonary valve stenosis, Ebstein's anomaly, perimembranous VSD, and ASD secundum, ranging from
181 OR 1.90 (CI 1.09–3.31) for VSD to OR 3.89 (CI 1.51–10.06) for Ebstein's anomaly, they did not find an association for a
182 multiple of other CHD subtypes (23). The study also found a significant association between untreated hypertension
183 or late pregnancy antihypertensive medication initiation and the same subtypes of CHDs (with the exception of
184 Ebstein's anomaly) (23). Information on maternal use of antihypertensive medication in the NBDPS was from
185 telephone interviews with the mother made between six weeks and 24 months after estimated due date (23).

186

187 3.3 Maternal preeclampsia or gestational hypertension and CHDs in the offspring

188 Three studies investigated associations between preeclampsia (PE) and any CHDs or major CHDs, although the
189 definition of PE varied among the studies. Auger et al. reported a PR 1.57 (CI 1.48-1.67) of any CHDs in pregnancies
190 with PE, compared to pregnancies without PE in a Canadian population-based cohort study including 1.9 million
191 deliveries (25). However, PE with onset before 34 weeks of gestation was associated with a highly increased risk of
192 having an infant with any CHD in singleton pregnancies (PR 7.37; CI 6.61-8.21) (25). Boyd et al. reported a similar
193 association between early-onset PE (delivery before 34 weeks' gestation) and risk of any CHD in the offspring, in a
194 cohort of almost two million singleton pregnancies (OR 7.00; CI 6.11-8.03) (24). Brodwall et al. reported an association
195 between early-onset PE and major CHDs (Table 1) (aRR 2.7; CI 1.3-5.6), compared to normotensive pregnancies in
196 900,000 Norwegian singleton births (35). Similarly, Auger et al. found an association between early-onset PE and
197 critical CHDs (Table 1) (aPR 2.78; CI 1.71-4.50) (25), and reported an increased risk when presenting with PE with
198 intrauterine growth restriction (aPR 3.72, CI 2.45-5.64) (25).
199 Boyd et al. reported an association between any CHD and PE with delivery at 34 to 36 weeks (OR 2.82, CI 2.38-3.34).
200 They found a weaker association between PE at term and any CHDs (OR 1.16; CI 1.06-1.27), and no association
201 between gestational hypertension and any CHDs (24). Auger et al. found a weak association between any CHD and
202 late-onset PE (>34 weeks) (aPR 1.14; CI 1.06-1.23) (25).
203 Two studies assessed PE and CHDs, and potential risks of both in subsequent pregnancies (24,35). Brodwall et al. did
204 not find an association between PE and CHDs across pregnancies (35). However, Boyd et al. reported an increased risk
205 of having a child with CHD in subsequent pregnancies after a pregnancy with PE and delivery before 34 weeks'
206 gestation (OR 7.91; CI 6.06-10.3). Also an association between a previous pregnancy with a child with CHDs and
207 increased risk of PE with delivery before 34 weeks' gestation in subsequent pregnancies (OR 2.37; CI 1.68-3.34) (24).

208

209 3.4 Maternal overweight or obesity and CHDs in the offspring

210 Several studies have investigated the association between maternal overweight or obesity and any CHD, but only
211 some have specified how they defined "any CHD" (22,26,27,40,42,46). A large nationwide Swedish cohort study by
212 Persson et al. with two million singleton infants reported increasing risk estimates for any CHD with increasing
213 maternal BMI (overweight: RR 1.07; CI 1.04-1.10 to obesity class III: RR 1.60; CI 1.42-1.81) (26). Persson et al. made

214 their estimates from BMI measurements from the first antenatal visit. A similar American cohort study including
215 121,815 deliveries and maternal BMI from medical records also found increasing risk of any CHD with increasing
216 maternal BMI (overweight: aOR 1.15; CI 1.01-1.32 to obesity class III: aOR 1.34; CI 1.02-1.76) (27), and so did Gilboa et
217 al. in their case-control study including approximately 12,000 American deliveries from the NBDPS (40). Another large
218 cohort study by Liu et al. found an association between maternal obesity diagnosed as ICD-10 codes and any CHD
219 (aOR 1.48; CI 1.32-1.65) (22). Two studies failed to find a significant association between any CHD in the offspring and
220 maternal overweight or obesity (42,46): one cohort study from Northern England by Rankin et al. including 41,000
221 singleton pregnancies (42), the other an American case-control study with 851 cases and 2,767 controls (46).
222 Most studies investigated specific CHD diagnoses in relation to maternal BMI (Table 1). While some studies found
223 positive associations, other could not replicate these findings. A comparison between studies was impossible because
224 of varying definitions of BMI groups and CHD subtypes (Table 2).

225

226 3.5 Maternal pregestational diabetes and CHDs in the offspring

227 Seven studies reported how they defined “any CHD” (Table 1) (18–22,36,52). All studies found a significant
228 association, whether they reported association between any CHD and pregestational diabetes (PGDM) (19–21,52),
229 DM1 (18,22,36), or DM2 (22,36). PGDM was defined as DM1 or DM2 in all studies. Risk estimates for any CHD and
230 association with PGDM was reported by three large population-based cohort studies and one case-control study. One
231 study from Texas including 4.2 million infants (aPR 3.24; CI 2.86-3.67) (20), a second from Denmark including two
232 million infants (aRR 3.96; CI 3.48-4.49) (19), a third from Norway including 900,000 livebirths, stillbirths or terminated
233 pregnancies (aRR 2.92; CI 2.54-3.36) (21) and last an American study (NBDPS) with approximately 18,000 infants, who
234 reported risks for both isolated CHDs (aOR 4.65; CI 2.87–7.51) and CHD as part of multiple defects (aOR 10.77; CI
235 6.23–18.62) (52).

236 The association between any CHD and DM1 was reported by three large population-based studies, each of which
237 included at least one million pregnancies, from Sweden (aRR 3.19; CI 2.69-3.80) (18), Taiwan (aOR 2.32; CI 1.66–3.25)
238 (36), and Canada (OR 4.65; CI 4.13–5.24) (22). Two of the studies also reported a significant association between any
239 CHD and DM2 (aOR 2.85; CI 2.60–3.12 (36), or aOR 4.12; CI 3.69–4.60 (22)).

240 Four studies evaluated subtypes of CHDs according to Botto *et al.*'s classification (56). All studies found positive
241 associations for PGDM and selected subtypes listed in Table 1 (19–21,52), except for anomalous pulmonary venous
242 return in two studies (19,21), RVOTO in one study (21), and heterotaxia in one study (52). Two studies presented
243 associations between PGDM and major CHDs, but they defined major CHDs differently (Table 1): Leirgul *et al.* found an
244 association between PGDM and major CHDs (aRR 3.34; CI 2.48-4.49) (21), Chou *et al.* only found an association
245 between DM2 and major CHDs (aOR 2.80; CI 2.04-3.85), but not for DM1 and major CHDs (36).
246 Several studies have investigated the relationship between PGDM and specific CHD diagnoses (37,48,50–54) and in
247 most cases found a significant association (Table 3).

248

249 3.6 Maternal gestational diabetes and CHDs in the offspring

250 Five studies reported how they defined “any CHD” (Table 1) (19–21,52,55). Three studies found a significant
251 association between any CHD and GDM (aPR 1.49; CI 1.39-1.60 (20), aRR 1.47; CI 1.26–1.71 (21), and aOR 1.59; CI
252 1.27–1.99 for isolated CHDs (52)). These studies also reported on GDM and subtypes of CHDs (Table 4). Øyen *et al.*
253 found an association between any CHD and GDM diagnosed in the third trimester (aRR 1.36; CI 1.07-1.69), but could
254 not find a significant association between any CHD and GDM diagnosed in the second trimester (19). A Chinese study
255 reported the prevalence of any CHD from postnatal population-based screening of approximately 90,000 infants to be
256 33.7/1,000 in pregnant women with GDM vs. 19.8/1000 in pregnant women without GDM (55).

257

258 3.7 Combination of maternal obesity and gestational diabetes and CHDs in the offspring

259 Only one study comprised an assessment of the combined risk of two maternal metabolic conditions. Gilboa *et al.*
260 reported an accumulating effect of the combination of maternal obesity (BMI ≥ 30 kg/m²) and GDM and the risk of any
261 CHD (aOR 1.82; CI 1.36-2.44) (40). The relation between the combination of maternal obesity and GDM and subtypes
262 of CHDs are reported in Table 5.

263

264 4. Discussion

265 No studies assessing the association between CHDs in the offspring and maternal MetS were identified. Only one
266 study dealt with the combination of more than one maternal metabolic condition as risk factor for CHDs in the
267 offspring (40). All other studies investigated the individual metabolic disorders and their association with CHDs, and
268 here were no eligible studies on dyslipidaemia.

269 The associations between maternal metabolic disorders related to MetS and CHDs fall in three groups: A. chronic
270 hypertension, GDM, and obesity with ORs or RRs of 1.3-1.8; B. PGDM with ORs or RRs around 3-4; and C. early-onset
271 PE with ORs or PRs of 7. Thus, for the most prevalent maternal conditions, the relative risks of CHDs are only
272 marginally elevated. However, most of these conditions co-occur in pregnant women, which is why it is important to
273 study the relative risks associated with combinations of metabolic disorders. Furthermore, it is important to examine
274 whether a modification of a pre-existing condition influences risks for CHDs.

275 The aetiology of CHD is complex and the large population- and register based studies cannot distinguish subgroups
276 with markedly elevated risks from the larger group presumably without specific aetiologies, such specific
277 chromosomal aberrations or Mendelian inherited CHDs to establish evidence-based information for use in a clinical
278 setting. Furthermore, these studies do not address the combination of several maternal metabolic disorders related
279 to MetS, and they are hampered due to diverging definitions, classifications, and methodology.

280 The number of high-quality studies is surprisingly small, particularly in view of the high and increasing prevalence of
281 obesity, diabetes, and MetS. Furthermore, no studies from countries with high prevalence of PE, i.e. Sub-Saharan
282 Africa, were eligible, very few publications addressed this issue in high prevalence countries and those that did,
283 unfortunately, did not fulfil the inclusion criteria. This skewness may result in the findings being irrelevant for large
284 parts of the global population.

285 There is a clear pathophysiological connection between maternal insulin resistance and foetal CHDs, with glucose-
286 mediated mechanisms of CHD involving multiple developmental pathways (57). The association between PE, a
287 condition occurring by definition after gestational week 20, and CHDs developed much earlier may be explained by
288 the changes in maternal adipocytokine levels in first trimester of PE pregnancies (58,59).

289 PE is considered a disease of multiple aetiologies and may present with signs ranging from mild hypertension with a
290 normal foetus to a condition with severe intrauterine growth retardation and a maternal hypertensive syndrome (60).

291 As the mild hypertension may reflect a physiological response to the placental hypo-perfusion whereas the maternal
292 syndrome is caused by widespread endothelial damage, it is important to study the association between CHDs and PE
293 in cohorts of well-characterized patients. In two large studies, the association between CHDs and PE is much stronger
294 in PE with early-onset (24,25). This is compatible with an interference with foetal glucose regulation in first trimester.
295 Furthermore, one study also report a strong relation between CHD and PE with intrauterine growth retardation (25).
296 Women with chronic hypertension will most likely be undergoing treatment with antihypertensive drugs. It is thus
297 important to distinguish between the effects of antihypertensive drugs and the hypertension proper. A meta-analysis
298 by Ramakrishnan et al. observed an association between untreated hypertension and CHDs, which suggests that the
299 association between hypertension and CHDs is not simply due to teratogenic effects of medication alone (61). But the
300 effect is larger for treated hypertension. Thus, antihypertensive medications may lead to an additional increase in risk.
301 Treated hypertension might also indicate more severe disease in the mother.

302 Our findings regarding maternal obesity are compatible with findings from recent meta-analyses which included
303 studies not eligible for this review: Zhu et al. (17 studies) reported an OR 1.17 (CI 1.15-1.20) for maternal BMI \geq 30
304 kg/m² (62), and Zheng et al. (29 studies) reported an OR 1.32 (CI 1.21-1.43) for BMI > 30 kg/m² and OR 1.42 (1.33-
305 1.51) for BMI \geq 40 kg/m² (63). Two meta-analyses reported a dose-response effect on risk of CHDs with increasing BMI
306 (63,64). It is very well-established that maternal obesity is associated with marginally increased risk of CHDs. However,
307 an increase of 20-40% of a very small risk may not be clinically significant. Particularly as it has not been shown that
308 weight reduction normalizes the risk.

309 No articles on dyslipidaemia fulfilled the inclusion criteria for the review. However, one small case-control study from
310 China found significantly increased levels of low-density lipoprotein cholesterol and apolipoprotein B at 24 to 28
311 weeks' gestation in the pregnancies with a foetus with CHD compared to uncomplicated pregnancies (65). The mean
312 BMI was normal in both groups ($p=0.83$) (65).

313 Our analysis shows a remarkable lack of knowledge on the link between MetS, a major global health problem, and
314 CHDs in the offspring. There is a need for large population-based studies of the risk for foetal CHDs and combinations
315 of various maternal metabolic disorders. Furthermore, such studies should be ethnically inclusive and include women
316 of different socio-economic status. There is also a need for more detailed studies of the molecular mechanisms of

317 CHDs. A combination of large NGS-based genome and exome sequencing studies and the use of electronic health
318 records in a population-wide biobank setting could bring relevant knowledge on molecular mechanisms that might
319 support preventive approaches to CHDs as well as information of possible use in development of evidence-based
320 personalized medical advice.

321 The strength of this review is that we have selected only high-quality, original research studies. However, we have
322 limited our selection of studies to those published in English, which may have excluded a number of high-quality
323 studies which were published in another language.

324

325 **5. Conclusion**

326 The aetiology of CHDs is complex; furthermore, they are the most common malformations and a major cause of
327 morbidity and mortality in childhood. It is thus important to identify risk factors. Our review shows that there is a well-
328 established association, albeit to a varying extent, between obesity, hypertension, diabetes and PE with increased risk
329 of CHDs in the child. Frequently, these disorders occur clustered in the same pregnancy. Unfortunately, no studies had
330 been conducted into the risk of CHDs in children born by mothers with combination of several metabolic disorders
331 related to MetS. This hampers the clinical usefulness of the risk assessments. Since occurrence of MetS is rapidly
332 increasing, there is a need for such studies. Secondly, there is also a need for studies covering populations other than
333 those of European and Asian descent, particularly as the prevalence of MetS and its different manifestations vary
334 widely globally. Finally, despite the growing knowledge on the molecular aetiology of individual CHDs no studies have,
335 as of yet, studied the relation between the combination of maternal metabolic disorders and CHDs. Such studies may
336 result in the identification of subgroups of women where MetS might be of particularly importance as a risk factor.
337 The shortage, found in this study, of high-quality studies on the combination of metabolic disorders as a risk factor for
338 CHDs in the child makes it difficult to define treatment and preventive strategies.

339 References

- 340 1. Dolk H, Loane M, Garne E, European Surveillance of Congenital Anomalies (EUROCAT) Working Group.
341 Congenital heart defects in Europe: prevalence and perinatal mortality, 2000 to 2005. *Circulation*. 2011
342 Mar 1;123(8):841–9.
- 343 2. van der Linde D, Konings EEM, Slager MA, Witsenburg M, Helbing WA, Takkenberg JJM, et al. Birth
344 Prevalence of Congenital Heart Disease Worldwide. *J Am Coll Cardiol*. 2011 Nov;58(21):2241–7.
- 345 3. Lytzen R, Vejlstrop N, Bjerre J, Petersen OB, Leenskjold S, Dodd JK, et al. Live-Born Major Congenital
346 Heart Disease in Denmark: Incidence, Detection Rate, and Termination of Pregnancy Rate From 1996 to
347 2013. *JAMA Cardiol*. 2018 Sep 1;3(9):829–37.
- 348 4. Lytzen R, Vejlstrop N, Bjerre J, Petersen OB, Leenskjold S, Dodd JK, et al. Mortality and morbidity of
349 major congenital heart disease related to general prenatal screening for malformations. *Int J Cardiol*.
350 2019 01;290:93–9.
- 351 5. Triedman JK, Newburger JW. Trends in Congenital Heart Disease: The Next Decade. *Circulation*. 2016
352 Jun 21;133(25):2716–33.
- 353 6. Idorn L, Olsen M, Jensen AS, Juul K, Reimers JI, Sørensen K, et al. Univentricular hearts in Denmark
354 1977 to 2009: incidence and survival. *Int J Cardiol*. 2013 Aug 20;167(4):1311–6.
- 355 7. Raissadati A, Nieminen H, Jokinen E, Sairanen H. Progress in late results among pediatric cardiac
356 surgery patients: a population-based 6-decade study with 98% follow-up. *Circulation*. 2015 Jan
357 27;131(4):347–53; discussion 353.
- 358 8. Marelli AJ, Ionescu-Ittu R, Mackie AS, Guo L, Dendukuri N, Kaouache M. Lifetime prevalence of
359 congenital heart disease in the general population from 2000 to 2010. *Circulation*. 2014 Aug
360 26;130(9):749–56.
- 361 9. Verheugt CL, Uiterwaal CSPM, van der Velde ET, Meijboom FJ, Pieper PG, van Dijk APJ, et al. Mortality
362 in adult congenital heart disease. *Eur Heart J*. 2010 May;31(10):1220–9.
- 363 10. Pierpont ME, Brueckner M, Chung WK, Garg V, Lacro RV, McGuire AL, et al. Genetic Basis for Congenital
364 Heart Disease: Revisited: A Scientific Statement From the American Heart Association. *Circulation*. 2018
365 Nov 20;138(21):e653–711.
- 366 11. van der Bom T, Zomer AC, Zwinderman AH, Meijboom FJ, Bouma BJ, Mulder BJM. The changing
367 epidemiology of congenital heart disease. *Nat Rev Cardiol*. 2011 Jan;8(1):50–60.
- 368 12. Jin SC, Homsy J, Zaidi S, Lu Q, Morton S, DePalma SR, et al. Contribution of rare inherited and de novo
369 variants in 2,871 congenital heart disease probands. *Nat Genet*. 2017 Nov;49(11):1593–601.
- 370 13. Yagel S, Silverman NH, Gembruch U, editors. *Fetal Cardiology: Embryology, Genetics, Physiology,*
371 *Echocardiographic Evaluation, Diagnosis and Perinatal Management of Cardiac Diseases. Second*
372 *Edition. Vol. 2009. Informa Healthcare; Chapter 8.*

- 373 14. Yagel S, Silverman NH, Gembruch U, editors. Fetal Cardiology: Embryology, Genetics, Physiology,
374 Echocardiographic Evaluation, Diagnosis and Perinatal Management of Cardiac Diseases. Second
375 Edition. Vol. 2009. Informa Healthcare; Chapter 1.
- 376 15. Rorsman P, Arkhammar P, Bokvist K, Hellerström C, Nilsson T, Welsh M, et al. Failure of glucose to elicit
377 a normal secretory response in fetal pancreatic beta cells results from glucose insensitivity of the ATP-
378 regulated K⁺ channels. *Proc Natl Acad Sci U S A*. 1989 Jun;86(12):4505–9.
- 379 16. Hughes AF, Freeman RB, Fadem T. The teratogenic effects of sugars on the chick embryo. *J Embryol Exp*
380 *Morphol*. 1974 Dec;32(3):661–74.
- 381 17. Garnham EA, Beck F, Clarke CA, Stanisstreet M. Effects of glucose on rat embryos in culture.
382 *Diabetologia*. 1983 Sep;25(3):291–5.
- 383 18. Ludvigsson JF, Neovius M, Söderling J, Gudbjörnsdóttir S, Svensson A-M, Franzén S, et al.
384 Periconception glycaemic control in women with type 1 diabetes and risk of major birth defects:
385 population based cohort study in Sweden. *BMJ*. 2018 Jul 5;362:k2638.
- 386 19. Øyen N, Diaz LJ, Leirgul E, Boyd HA, Priest J, Mathiesen ER, et al. Prepregnancy Diabetes and Offspring
387 Risk of Congenital Heart Disease: A Nationwide Cohort Study. *Circulation*. 2016 Jun 7;133(23):2243–53.
- 388 20. Hoang TT, Marengo LK, Mitchell LE, Canfield MA, Agopian AJ. Original Findings and Updated Meta-
389 Analysis for the Association Between Maternal Diabetes and Risk for Congenital Heart Disease
390 Phenotypes. *Am J Epidemiol*. 2017 Jul 1;186(1):118–28.
- 391 21. Leirgul E, Brodwall K, Greve G, Vollset SE, Holmstrøm H, Tell GS, et al. Maternal Diabetes, Birth Weight,
392 and Neonatal Risk of Congenital Heart Defects in Norway, 1994-2009. *Obstet Gynecol*.
393 2016;128(5):1116–25.
- 394 22. Liu S, Joseph KS, Lisonkova S, Rouleau J, Van den Hof M, Sauve R, et al. Association between maternal
395 chronic conditions and congenital heart defects: a population-based cohort study. *Circulation*. 2013
396 Aug 6;128(6):583–9.
- 397 23. Fisher SC, Van Zutphen AR, Werler MM, Lin AE, Romitti PA, Druschel CM, et al. Maternal
398 Antihypertensive Medication Use and Congenital Heart Defects: Updated Results From the National
399 Birth Defects Prevention Study. *Hypertens Dallas Tex 1979*. 2017;69(5):798–805.
- 400 24. Boyd HA, Basit S, Behrens I, Leirgul E, Bundgaard H, Wohlfahrt J, et al. Association Between Fetal
401 Congenital Heart Defects and Maternal Risk of Hypertensive Disorders of Pregnancy in the Same
402 Pregnancy and Across Pregnancies. *Circulation*. 2017 Jul 4;136(1):39–48.
- 403 25. Auger N, Fraser WD, Healy-Profítós J, Arbour L. Association Between Preeclampsia and Congenital
404 Heart Defects. *JAMA*. 2015 Oct 20;314(15):1588–98.
- 405 26. Persson M, Razaz N, Edstedt Bonamy A-K, Villamor E, Cnattingius S. Maternal Overweight and Obesity
406 and Risk of Congenital Heart Defects. *J Am Coll Cardiol*. 2019 Jan 8;73(1):44–53.
- 407 27. Brite J, Laughon SK, Troendle J, Mills J. Maternal overweight and obesity and risk of congenital heart
408 defects in offspring. *Int J Obes 2005*. 2014 Jun;38(6):878–82.

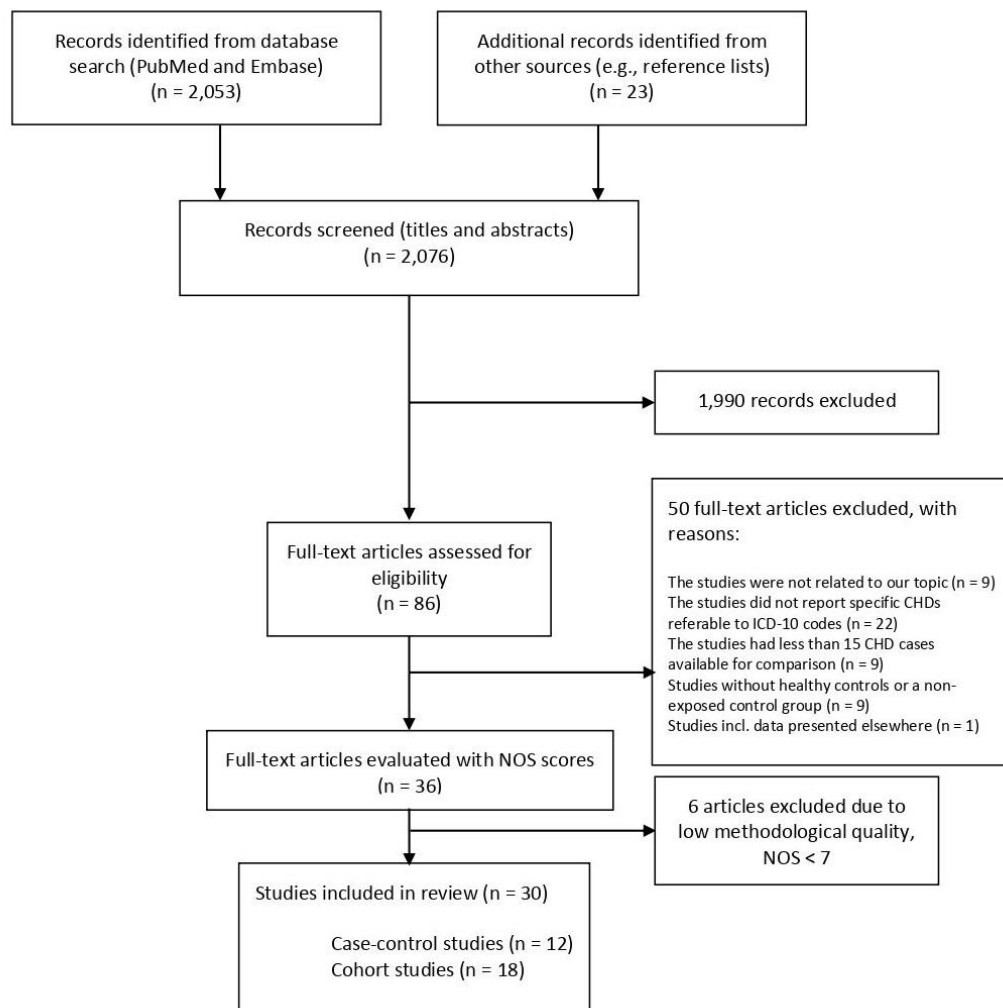
- 409 28. Cornier M-A, Dabelea D, Hernandez TL, Lindstrom RC, Steig AJ, Stob NR, et al. The metabolic syndrome.
410 *Endocr Rev.* 2008 Dec;29(7):777–822.
- 411 29. Jeyabalan A, Hubel CA, Roberts JM. Chapter 7 - Metabolic Syndrome and Preeclampsia. In: Taylor RN,
412 Roberts JM, Cunningham FG, Lindheimer MD, editors. *Chesley's Hypertensive Disorders in Pregnancy*
413 (Fourth Edition) [Internet]. San Diego: Academic Press; 2015 [cited 2020 Jun 16]. p. 133–60. Available
414 from: <http://www.sciencedirect.com/science/article/pii/B9780124078666000079>
- 415 30. O'Neill S, O'Driscoll L. Metabolic syndrome: a closer look at the growing epidemic and its associated
416 pathologies. *Obes Rev Off J Int Assoc Study Obes.* 2015 Jan;16(1):1–12.
- 417 31. Grieger JA, Bianco-Miotto T, Grzeskowiak LE, Leemaqz SY, Poston L, McCowan LM, et al. Metabolic
418 syndrome in pregnancy and risk for adverse pregnancy outcomes: A prospective cohort of nulliparous
419 women. *PLoS Med.* 2018;15(12):e1002710.
- 420 32. Reaven GM. Banting lecture 1988. Role of insulin resistance in human disease. *Diabetes.* 1988
421 Dec;37(12):1595–607.
- 422 33. Body mass index - BMI [Internet]. World Health Organization; 2020 [cited 2020 May 18]. Available
423 from: [http://www.euro.who.int/en/health-topics/disease-prevention/nutrition/a-healthy-](http://www.euro.who.int/en/health-topics/disease-prevention/nutrition/a-healthy-lifestyle/body-mass-index-bmi)
424 [lifestyle/body-mass-index-bmi](http://www.euro.who.int/en/health-topics/disease-prevention/nutrition/a-healthy-lifestyle/body-mass-index-bmi)
- 425 34. The Newcastle-Ottawa Scale (NOS) for assessing the quality of nonrandomised studies in meta-analyses
426 [Internet]. Available from: http://www.ohri.ca/programs/clinical_epidemiology/oxford.asp
- 427 35. Brodwall K, Leirgul E, Greve G, Vollset SE, Holmstrøm H, Tell GS, et al. Possible Common Aetiology
428 behind Maternal Preeclampsia and Congenital Heart Defects in the Child: a Cardiovascular Diseases in
429 Norway Project Study. *Paediatr Perinat Epidemiol.* 2016 Jan;30(1):76–85.
- 430 36. Chou H-H, Chiou M-J, Liang F-W, Chen L-H, Lu T-H, Li C-Y. Association of maternal chronic disease with
431 risk of congenital heart disease in offspring. *CMAJ Can Med Assoc J J Assoc Medicale Can.* 2016 Dec
432 6;188(17–18):E438–46.
- 433 37. Vereczkey A, Gerencsér B, Czeizel AE, Szabó I. Association of certain chronic maternal diseases with the
434 risk of specific congenital heart defects: a population-based study. *Eur J Obstet Gynecol Reprod Biol.*
435 2014 Nov;182:1–6.
- 436 38. Block SR, Watkins SM, Salemi JL, Rutkowski R, Tanner JP, Correia JA, et al. Maternal pre-pregnancy
437 body mass index and risk of selected birth defects: evidence of a dose-response relationship. *Paediatr*
438 *Perinat Epidemiol.* 2013 Nov;27(6):521–31.
- 439 39. Blomberg MI, Källén B. Maternal obesity and morbid obesity: the risk for birth defects in the offspring.
440 *Birt Defects Res A Clin Mol Teratol.* 2010 Jan;88(1):35–40.
- 441 40. Gilboa SM, Correa A, Botto LD, Rasmussen SA, Waller DK, Hobbs CA, et al. Association between
442 prepregnancy body mass index and congenital heart defects. *Am J Obstet Gynecol.* 2010
443 Jan;202(1):51.e1-51.e10.
- 444 41. Mills JL, Troendle J, Conley MR, Carter T, Druschel CM. Maternal obesity and congenital heart defects: a
445 population-based study. *Am J Clin Nutr.* 2010 Jun;91(6):1543–9.

- 446 42. Rankin J, Tennant PWG, Stothard KJ, Bythell M, Summerbell CD, Bell R. Maternal body mass index and
447 congenital anomaly risk: a cohort study. *Int J Obes* 2005. 2010 Sep;34(9):1371–80.
- 448 43. Shaw GM, Carmichael SL. Prepregnant obesity and risks of selected birth defects in offspring. *Epidemiol*
449 *Camb Mass*. 2008 Jul;19(4):616–20.
- 450 44. Cedergren MI, Källén BAJ. Maternal obesity and infant heart defects. *Obes Res*. 2003 Sep;11(9):1065–
451 71.
- 452 45. Watkins ML, Rasmussen SA, Honein MA, Botto LD, Moore CA. Maternal Obesity and Risk for Birth
453 Defects. *Pediatrics*. 2003 May 1;111(Supplement 1):1152–8.
- 454 46. Watkins ML, Botto LD. Maternal prepregnancy weight and congenital heart defects in offspring.
455 *Epidemiol Camb Mass*. 2001 Jul;12(4):439–46.
- 456 47. Shaw GM, Todoroff K, Schaffer DM, Selvin S. Maternal height and prepregnancy body mass index as
457 risk factors for selected congenital anomalies. *Paediatr Perinat Epidemiol*. 2000 Jul;14(3):234–9.
- 458 48. Kovalenko AA, Anda EE, Odland JØ, Nieboer E, Brenn T, Krettek A. Risk Factors for Ventricular Septal
459 Defects in Murmansk County, Russia: A Registry-Based Study. *Int J Environ Res Public Health*. 2018
460 24;15(7).
- 461 49. Liu S, Rouleau J, León JA, Sauve R, Joseph KS, Ray JG. Impact of pre-pregnancy diabetes mellitus on
462 congenital anomalies, Canada, 2002–2012. *Health Promot Chronic Dis Prev Can Res Policy Pract*. 2015
463 Jul;35(5):79–84.
- 464 50. Vinceti M, Malagoli C, Rothman KJ, Rodolfi R, Astolfi G, Calzolari E, et al. Risk of birth defects associated
465 with maternal pregestational diabetes. *Eur J Epidemiol*. 2014 Jun;29(6):411–8.
- 466 51. Agopian AJ, Moulik M, Gupta-Malhotra M, Marengo LK, Mitchell LE. Descriptive epidemiology of non-
467 syndromic complete atrioventricular canal defects. *Paediatr Perinat Epidemiol*. 2012 Nov;26(6):515–24.
- 468 52. Correa A, Gilboa SM, Besser LM, Botto LD, Moore CA, Hobbs CA, et al. Diabetes mellitus and birth
469 defects. *Am J Obstet Gynecol*. 2008 Sep;199(3):237.e1–9.
- 470 53. Sharpe PB, Chan A, Haan EA, Hiller JE. Maternal diabetes and congenital anomalies in South Australia
471 1986–2000: a population-based cohort study. *Birt Defects Res A Clin Mol Teratol*. 2005 Sep;73(9):605–
472 11.
- 473 54. Erickson JD. Risk factors for birth defects: data from the Atlanta Birth Defects Case-Control Study.
474 *Teratology*. 1991 Jan;43(1):41–51.
- 475 55. Liu X, Liu G, Wang P, Huang Y, Liu E, Li D, et al. Prevalence of congenital heart disease and its related
476 risk indicators among 90,796 Chinese infants aged less than 6 months in Tianjin. *Int J Epidemiol*. 2015
477 Jun;44(3):884–93.
- 478 56. Botto LD, Lin AE, Riehle-Colarusso T, Malik S, Correa A, National Birth Defects Prevention Study.
479 Seeking causes: Classifying and evaluating congenital heart defects in etiologic studies. *Birt Defects Res*
480 *A Clin Mol Teratol*. 2007 Oct;79(10):714–27.

- 481 57. Helle E, Priest JR. Maternal Obesity and Diabetes Mellitus as Risk Factors for Congenital Heart Disease
482 in the Offspring. *J Am Heart Assoc.* 2020 Apr 21;9(8):e011541.
- 483 58. Thagaard IN, Hedley PL, Holm J-C, Lange T, Larsen T, Krebs L, et al. Leptin and Adiponectin as markers
484 for preeclampsia in obese pregnant women, a cohort study. *Pregnancy Hypertens.* 2019 Jan;15:78–83.
- 485 59. Hedley PL, Placing S, Wøjdemann K, Carlsen AL, Shalmi A-C, Sundberg K, et al. Free leptin index and
486 PAPP-A: a first trimester maternal serum screening test for pre-eclampsia. *Prenat Diagn.* 2010
487 Feb;30(2):103–9.
- 488 60. Mol BWJ, Roberts CT, Thangaratinam S, Magee LA, de Groot CJM, Hofmeyr GJ. Pre-eclampsia. *Lancet*
489 *Lond Engl.* 2016 Mar 5;387(10022):999–1011.
- 490 61. Ramakrishnan A, Lee LJ, Mitchell LE, Agopian AJ. Maternal Hypertension During Pregnancy and the Risk
491 of Congenital Heart Defects in Offspring: A Systematic Review and Meta-analysis. *Pediatr Cardiol.* 2015
492 Oct;36(7):1442–51.
- 493 62. Zhu Y, Chen Y, Feng Y, Yu D, Mo X. Association between maternal body mass index and congenital heart
494 defects in infants: A meta-analysis. *Congenit Heart Dis.* 2018 Mar;13(2):271–81.
- 495 63. Zheng Z, Yang T, Chen L, Wang L, Zhang S, Wang T, et al. Increased maternal Body Mass Index is
496 associated with congenital heart defects: An updated meta-analysis of observational studies. *Int J*
497 *Cardiol.* 2018 Dec 15;273:112–20.
- 498 64. Liu X, Ding G, Yang W, Feng X, Li Y, Liu H, et al. Maternal Body Mass Index and Risk of Congenital Heart
499 Defects in Infants: A Dose-Response Meta-Analysis [Internet]. *BioMed Research International.* 2019
500 [cited 2019 Oct 21]. Available from: <https://www.hindawi.com/journals/bmri/2019/1315796/>
- 501 65. H.-J B, H.-M P, L Z, Y.-S L, X.-D L, S.-J L, et al. Dyslipidemia in pregnancy may contribute to increased risk
502 of congenital heart defects. *J Clin Exp Med.* 2017 Feb;
- 503

504 **Table and Figure Legends**

505 **Figure 1.** Flow diagram. The process of selection of studies to be included in the review. Literature search
506 included studies published from January 1, 1990 to October 6, 2019.
507 CHDs, congenital heart defects; ICD, International Classification of Disease; NOS, Newcastle-Ottawa Scale

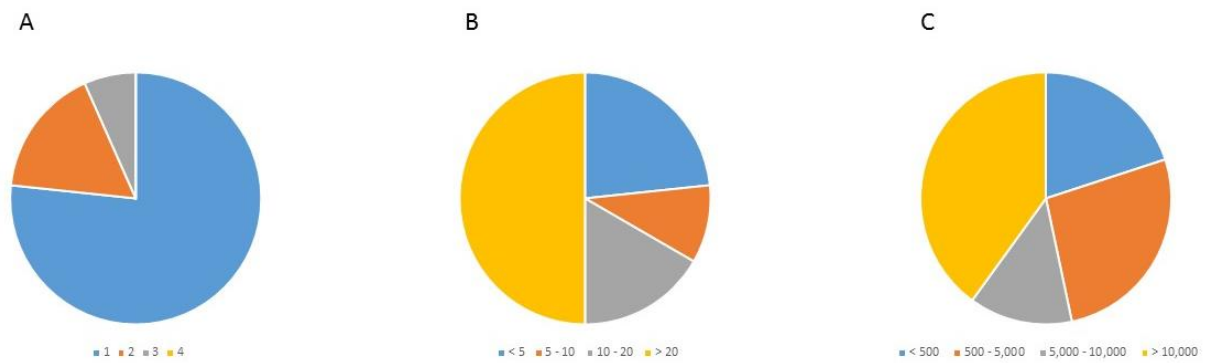


508

509

510

511 **Figure 2.** Content of the included studies. A. Number of different maternal metabolic disorders assessed in the
512 studies. Metabolic disorders were defined as obesity, diabetes, hypertension, preeclampsia, dyslipidaemia or
513 metabolic syndrome. B. Number of different congenital heart defect diagnoses assessed in the studies. C. Number of
514 patients with congenital heart defects included in the studies.



515

516

517 **Table 1.** Characteristics of included studies

| Author/publication year | Country of study population | Study design | Sample source (size of population) | Included study population | Plurality | Reported CHDs | Adjusted for confounders or matched | Maternal exposure | Sources of maternal exposure |
|-------------------------|-----------------------------|--------------|---|-------------------------------------|------------|---|-------------------------------------|---|------------------------------|
| Agopian 2012 | USA (Texas) | Cohort | Population-based (n=3,806,299) | Livebirths, stillbirths, terminated | All | AVSD (BPA: 745.620) | Unadjusted? | Any DM, PGDM, GDM | Registers |
| Auger 2015 | Canada (Quebec) | Cohort | Population-based (n=1,942,072) | Livebirths | All | Any CHD (ICD-9: 745-747.4; ICD-10: Q20-26.4 + Q26.8-26.9); critical CHDs (ToF, TGA, truncus arteriosus, hypoplastic left heart, UVH, CoA); non-critical CHDs (endocardial cushion, VSD, ASD, valve, aorta, pulmonary artery, heterotaxia) | Adjusted | Early-onset PE, late-onset PE, PE with growth restriction, severity of PE | Register |
| Block 2013 | USA (Florida) | Case-control | Population-based (2,767 CHD cases/1,079,746 controls) | Livebirths | Singletons | Aortic valve stenosis; CoA; AVSD; pulmonary valve atresia and stenosis; ToF; TGA; VSD | Adjusted | Overweight/obesity | Medical records |
| Blomberg 2010 | Sweden | Cohort | Population-based, nationwide (n=1,049,582) | Livebirths, stillbirths | Not stated | ToF, TGA, HLHS, common truncus (pooled as "serious CHDs" or separate) | Adjusted | Overweight/obesity | Registers |
| Boyd 2017 | Denmark | Cohort | Population-based, nationwide (n=1,972,857) | Live births | Singletons | Any CHD (ICD-8: 746.00-747.49, 759.00, 759.01, 759.09; ICD10: Q20-26 + Q893); Heterotaxia; Conotruncal defects; AVSD; APVR; LVOTO; RVOTO; different septal defects; other subtypes of CHDs | Adjusted | Early preterm PE, late preterm PE, term PE, gestational hypertension | Register |
| Brite 2014 | USA | Cohort | Population-based, multi-site, CSL (n=121,815) | Livebirths | Singletons | Any CHD (ICD-9: 745-747.4); Conotruncal defects; VSD; ASD | Adjusted | Overweight/obesity | Medical records |
| Brodwall 2016 | Norway | Cohort | Population-based, nationwide (n=914,703) | Livebirths, stillbirths, terminated | Singletons | Major CHDs also incl. VSD corrected age < 1y, UVH, cc-TGA, DOLV | Adjusted | Early-onset PE+severe/mild/unspecified, late-onset PE+severe/mild/unspecified, pregnancy-induced hypertension | Register |
| Cedergren 2003 | Sweden | Case-control | Population-based, nationwide (7,379 CHD cases/812,457 controls) | Livebirths, stillbirths | Not stated | HLHS; d-TGA; Endocardial cushion defects; ToF; VSD; ASD; CoA; Severe CHDs (11 subtypes of CHDs grouped together) | Adjusted | Overweight/obesity | Registers |

| | | | | | | | | | |
|----------------|-----------------------|--------------|--|-------------------------------------|------------|--|----------|---|---------------------------------|
| Chou 2016 | Taiwan | Cohort | Population-based, nationwide (n=1,387,650) | Livebirths | All | Any CHD (ICD-9-CM: 745-747.4); severe CHDs (ToF, TGA, DORV, APVR, tricuspid atresia, ccTGA, common truncus, UVH) | Adjusted | DM1, DM2, chronic hypertension | Register |
| Correa 2008 | USA | Case-control | Population-based, multi-site, NBDPS (13,030 CM cases/4,895 controls) | Livebirths | Not stated | Any CHD (described in NBDPS); 16 subtypes of CHDs | Adjusted | PGDM (DM1 or DM2), GDM | Interviews |
| Erickson 1991 | USA | Case-control | Population-based, ABDCCS (4,900 CM cases/3,000 controls) | Livebirths, stillbirths | Not stated | 13 subtypes of CHDs | Matched | DM | Interviews |
| Fisher 2017 | USA | Case-control | Population-based, multi-site, NBDPS (10,625 CHD cases/11,137 controls) | Livebirths, stillbirths, terminated | Singletons | Any CHD (described in NBDPS); Heterotaxia; Conotruncal defects; AVSD; APVR; LVOT defects; RVOT defects; Ebstein's anomaly; Septal defects; UVH | Adjusted | Hypertension incl. antihypertensive medications | Interviews/self-reported |
| Gilboa 2010 | USA | Case-control | Population-based, multi-site, NBDPS (6,440 CHD cases/5,673 controls) | Livebirths, stillbirths | Not stated | Any CHD (described in NBDPS); Heterotaxia; UVH; Conotruncal defects; AVSD; APVR; LVOTO; RVOTO; Ebstein's anomaly; Septal defects; CoA+VSD; VSD+ASD; pulmonary valve stenosis+ASD | Adjusted | Overweight/obesity, overweight/obesity+GDM | Interviews |
| Hoang 2016 | USA (Texas) | Cohort | Population-based (n=4,207,898) | Livebirths | All | Any CHD (BPA: 745.000–745.490, 745.510–745.900, 746.000–746.995, 747.100–747.320, 747.33–747.490); ASD; AVSD; Conotruncal defects; LVOTO; RVOTO; UVH; AVPR; VSD | Adjusted | Any DM, PGDM, GDM | Self-reported / medical records |
| Kovalenko 2018 | Russia (Murmansk) | Cohort | Population-based (n=52,253) | Livebirths | Singletons | VSD (ICD-10: Q21.0) | Adjusted | PGDM (DM1 or DM2), overweight/obesity | Registers |
| Leirgul 2016 | Norway | Cohort | Population-based, nationwide (n=914,427) | Livebirths, stillbirths, terminated | Singletons | Any CHD (45 CHD diagnoses listed in paper); major CHDs also incl. ccTGA, UVH, double inlet left ventricle, absent pulmonary valve and except valvular pulmonary stenosis; other subtypes of CHDs | Adjusted | DM1, DM2, GDM or unspecified DM | Registers |
| Liu 2013 | Canada (excl. Quebec) | Cohort | Population-based, nationwide (n=2,278,838) | Livebirths | All | Any CHD (ICD-10-CA: Q200-269, Q893); Heterotaxia; Conotruncal defects; AVSD; LVOTO; RVOTO; VSD; ASD; Multiple defects | Adjusted | PGDM (DM1, DM2), chronic hypertension, obesity | Register |

| | | | | | | | | | |
|-----------------|-----------------------------|-----------------------|--|-------------------------------------|------------|--|----------------------|---|---------------------------------|
| Liu 2015 | China (Tianjin) | Cohort | Population-based (n=90,796) | Livebirths | All | Any CHD (ASD, VSD, PDA, PS, ToF, AVSD, AS, UVH, Ebstein's anomaly, compound and others) | ?? | GDM, pregnancy-induced hypertension, overweight/obesity | Self-reported / medical records |
| Ludvigsson 2018 | Sweden | Cohort | Population-based, nationwide (n=1,162,323) | Livebirths | Singletons | Any CHD (Q20-Q25, Q260, Q262-Q269) | Adjusted | DM1 | Registers |
| Mills 2010 | USA (New York State) | Case-control (nested) | Population-based (7392 CHD cases/56,304 controls) | Livebirths, stillbirths? | Singletons | Conotruncal defects; TGA; DORV; ToF; All septal defects; ASD; VSD; LVOTO; HLHS; CoA; Aortic valve stenosis; RVOTO; Pulmonic valve stenosis; APVR; Total APVR; AVSD | Adjusted | Overweight/obesity | Medical records |
| Persson 2019 | Sweden | Cohort | Population-based, nationwide (n=2,050,491) | Livebirths | Singletons | Any CHD (ICD-10: Q20-25, Q260, Q262-269); ToF, TGA, AVSD, Aortic arch defect, UVH (complex CHDs) and 7 subtypes of CHD | Adjusted | Overweight/obesity | Registers |
| Rankin 2010 | England | Cohort | Population-based (n=41,013) | Livebirths, stillbirths, terminated | Singletons | Any CHD (ICD-10: Q20-26); TGA; VSD; ASD; ToF; Ebstein's anomaly; Pulmonary valve stenosis; Aortic valve atresia/stenosis, CoA | Adjusted | Overweight/obesity | Registers / medical records |
| Sharpe 2005 | Australia (South Australia) | Cohort | Population-based (n=282,260) | Livebirths, stillbirths | Singletons | TGA | Adjusted | PGDM, GDM | Interviews |
| Shaw 2000 | USA (California) | Case-control | Population-based (1,299 CM cases/734 controls) | Livebirths, stillbirths | Not stated | Conotruncal defects (ToF, d-TGA, TA, DORV, pulmonary valve atresia with VSD, subaortic VSD type I and aortico-pulmonary window); d-TGA; ToF | Adjusted | Overweight/obesity | Interviews |
| Shaw 2008 | USA (California) | Case-control | Population-based (301 CHD cases/1,390 controls) | Livebirths, stillbirths, terminated | Not stated | ToF; d-TGA | Adjusted | Overweight/obesity | Interviews |
| Vereczkey 2014 | Hungary | Case-control | Population-based (3,562 CHD cases/38,151 controls) | Livebirths | All | 20 different subtypes of CHDs | Adjusted | DM, chronic hypertension | Medical records |
| Vinceti 2014 | Italy | Cohort | Population-based (n=479,720) | Livebirths, stillbirths | All | TGA; ToF; VSD; ASD | Matched | PGDM (DM1 or DM2) | Registers |
| Watkins 2001 | USA | Case-control | Population-based, ABDCCS (1049 CHD cases/2,767 controls) | Livebirths, stillbirths | Not stated | Any CHD (ICD-9: 745.00–747.49, isolated or multiple); outflow tract defects (ToF, DORV, TA, TGA); ToF; TGA; Septal defects (VSD, ASD); VSD; ASD; Right-sided defects (PA without VSD, pulmonic stenosis, pulmonic atresia) | Matched and adjusted | Overweight/obesity | Self-reported |

| | | | | | | | | | |
|--------------|---------|--------------|--|-------------------------------------|------------|--|----------|--------------------|------------|
| Watkins 2003 | USA | Case-control | Population-based, Atlanta BDRFSS (640 CM cases/330 controls) | Livebirths, stillbirths, terminated | Not stated | LVOTO; RVOTO; ASD; VSD; ASD or VSD; outflow tract defects | Adjusted | Overweight/obesity | Interviews |
| Øyen 2016 | Denmark | Cohort | Population-based, nationwide (n=2,025,727) | Livebirths | Singletons | Any CHD (ICD-8: 740-759; ICD-10: Q20-26); Heterotaxia; Conotruncal defects; AVSD; APVR; LVOTO; RVOTO; Septal defects; other subtypes of CHDs | Adjusted | DM1, DM2, GDM | Registers |

518

519 Note: The CHD diagnoses are described as “any CHD” for the whole group of diseases, “major CHDs” for a group of the most critical and severe CHD diagnoses, or as
520 specific CHD diagnoses. Major CHDs are defined as (unless other stated): heterotaxia, conotruncal defects, atrioventricular septal defects, anomalous pulmonary
521 venous return, left ventricular outflow tract obstruction, right ventricular outflow tract obstruction.

522 Abbreviations: ABDCCS, Atlanta Birth Defect Case-Control Study; APVR, anomalous pulmonary venous return; ASD, atrial septum defect; AVSD, atrioventricular
523 septal defect; BDRFSS, Birth Defects Risk Factor Surveillance Study; BMI, body mass index (pre-pregnancy or early-pregnancy unless other stated); BPA, British
524 Pediatric Association (codes); BWIS, Baltimore Washington Infant Study; CHDs, congenital heart defects; CM, congenital malformations; CSL, The Consortium of Safe
525 Labor; CVM, cardiovascular malformations; DM, diabetes mellitus; DM1, diabetes mellitus type 1; DM2, diabetes mellitus type 2; DOLV, double outlet left ventricle;
526 d-TGA, dextro-transposition of the great arteries; ECM, early cardiovascular malformations; EUROCAT, European network of population-based registries for the
527 epidemiological surveillance of congenital anomalies; GA, gestational age in weeks; GDM, gestational diabetes mellitus; HbA1C, glycated haemoglobin; HLHS,
528 hypoplastic left heart syndrome; HRHS, hypoplastic right heart syndrome; ICD-10, International Classification of Diseases, 10th revision; ICD-10-CA, International
529 Classification of Diseases, 10th Revision, Canada; ICD-8, International Classification of Diseases, 8th revision; ICD-9-CM, International Classification of Diseases, 9th
530 revision, Clinical Modification; LVOTO, left ventricular outflow tract obstruction; NBDPS, National Birth Defects Prevention Study; PA, pulmonary atresia; PE,
531 preeclampsia; PGDM, pregestational diabetes; RVOTO, right ventricular outflow tract obstruction; TA, truncus arteriosus; TGA, transposition of the great arteries;
532 ToF, Tetralogy of Fallot; UVH, univentricular heart; VSD, ventricular septal defect

533 **Table 2.** Studies on maternal overweight/obesity and subtypes of congenital heart defects

| Publication | Agopian 2012 | Block 2013 | Blomberg 2010 | Brite 2014 | Cedergren 2003 | Gilboa 2010 | Liu 2013 | Mills 2010 | Persson 2019 | Rankin 2010 | Shaw 2000 | Shaw 2008 | Watkins 2001 | Watkins 2003 |
|--------------------------|-----------------------|--|---------------|------------|----------------|--|----------|--|--|-------------|-----------|-----------|--------------|--------------|
| Risk estimate | aPR (CI) | aOR (CI) | OR (CI) | aOR (CI) | aOR (CI) | aOR (CI) | aOR (CI) | aOR (CI) | aPR (CI) | aOR (CI) | OR (CI) | aOR (CI) | aOR (CI) | OR (CI) |
| UVH | | | | | | NSA | | | I: 1.64 (1.13-2.38) | | | | | |
| Common truncus | | | NSA | | | | | | | | | | | |
| TGA | | I: 1.32 (1.01-1.73); II: 1.54 (1.08-2.20); III: 1.80 (1.19-2.72) | NSA | | NSA | NSA | | NSA | II: 1.51 (1.08-2.12); III: 1.85 (1.11-3.08) | NSA | NSA | NSA | NSA | NSA |
| ToF | | I: 1.35 (1.02-1.79); II: 1.93 (1.38-2.71); III: 2.11 (1.42-3.12) | NSA | | NSA | BMI ≥25: 1.24 (1.01-1.53) | | Overweight: 1.28 (1.01-1.62); III: 2.02 (1.24-3.29); BMI ≥30: 1.32 (1.01-1.72) | NSA | NSA | NSA | NSA | NSA | NSA |
| DORV | | | | | | | | III: 2.47 (1.05-5.80) | | | | | | |
| Aortic arch defects | | | | | | | | | I: 1.32 (1.09-1.58); II: 1.60 (1.19-2.15); III: 1.87 (1.19-2.95) | | | | | |
| AVSD | BMI≥30: 1.7 (1.2-2.3) | BMI≥30: 1.55 (1.09-2.22) | | | NSA | NSA | NSA | NSA | | | | | | |
| TAPVR | | | | | | I: 1.99 (1.14-3.47); BMI ≥25: 1.53 (1.03-2.28) | | NSA | | | | | | |
| Ebstein's anomaly | | | | | | BMI≥25: 1.78 (1.02-3.13) | | | | | | | | |

| | | | | | | | | | | | | | | |
|--------------------------|--|---|--------------------------|--|-----|--|-----|---|--|-----|--|--|--|----------------------------|
| LVOTO | | | | | | I: 1.34 (1.03–1.73) | NSA | I+II: 1.51 (1.24-1.83); III: 1.52 (1.01-2.29); BMI≥30: 1.51 (1.25-1.82) | | | | | | Overweight: 3.3 (1.6–6.7) |
| CoA | | NSA | | | NSA | NSA | NSA | NSA | | NSA | | | | Overweight: 3.9 (1.1–13.8) |
| Aortic valve stenosis | | II: 1.93 (1.09-3.43) | | | | NSA | | I+II: 2.03 (1.41-2.92); BMI≥30: 2.04 (1.44-2.88) | | NSA | | | | |
| RVOTO | | | | | | Overweight: 1.35 (1.11–1.65); BMI ≥35: 1.61 (1.17–2.20); BMI ≥25: 1.34 (1.13–1.60) | NSA | I+II: 1.32 (1.10-1.58); BMI ≥30: 1.30 (1.10-1.55) | | | | | | NSA |
| HLHS | | NSA | BMI≥30: 1.67 (1.13–2.46) | | NSA | I: 1.51 (1.03–2.22); BMI≥25: 1.32 (1.02–1.72) | | I+II: 1.66 (1.13-2.45); BMI ≥30: 1.71 (1.19-2.46) | | | | | | NSA |
| Pulmonary valve stenosis | | II: 1.45 (1.13-1.87); III: 1.83 (1.39-2.40)* | | | | Overweight: 1.40 (1.11–1.75); BMI ≥35: 1.76 (1.24–2.48); BMI ≥25: 1.36 (1.12–1.66) | | I+II: 1.30 (1.06-1.59); BMI ≥30: 1.29 (1.07-1.56) | | NSA | | | | |
| Septal defects | | | | | | Overweight: 1.16 (1.01–1.34); BMI≥35: 1.35 (1.07–1.70); BMI≥25: 1.15 (1.02–1.30) | | III: 1.27 (1.07-1.52) | | | | | | NSA |

| | | | | | | | | | | | | | | |
|-----|--|--|--|---|--------------------------|--|--------------------------|---|--|--------------------------|--|--|-----|-----|
| VSD | | I: 1.10 (1.01-1.20); II: 1.17 (1.04-1.32); III: 1.32 (1.15-1.52) | | I+II: 1.39 (1.05-1.83); BMI≥30: 1.38 (1.06-1.79) | BMI>29: 1.14 (1.01-1.28) | NSA | NSA | NSA | | BMI≥30: 1.56 (1.01-2.40) | | | NSA | NSA |
| ASD | | | | BMI 30-39.9: 1.19 (1.01-1.42); BMI≥30: 1.22 (1.04-1.43) | BMI>29: 1.37 (1.09-1.72) | Overweight: 1.28 (1.03-1.59); BMI≥35: 1.51 (1.09-2.11); BMI≥25: 1.29 (1.07-1.55) | BMI≥25: 1.74 (1.32-2.31) | I+II: 1.18 (1.03, 1.35); BMI≥30: 1.20 (1.05-1.36) | | NSA | | | NSA | NSA |

534

535 Note: * Pulmonary valve stenosis and atresia; NSA = no significant association; overweight = BMI 25.0-29.9; I = obesity class I (BMI 30.0-34.9); II = obesity class II

536 (BMI 35.0-39.9); III = obesity class III (BMI ≥40)

537 Abbreviations: aPR/aOR, adjusted; AVSD, atrioventricular septal defect; BMI, body mass index (kg/m²); CI, 95% confidence interval; CoA, coarctation of the aorta;

538 DORV, double outlet right ventricle; LVOTO, left ventricular outflow tract obstruction; OR, odds ratio; PR, prevalence ratio; TAPVR, total anomalous pulmonary

539 venous return; TGA, transposition of the great arteries; ToF, tetralogy of Fallot; UVH, univentricular heart

540 **Table 3.** Studies on pre-gestational diabetes and subtypes of congenital heart defects

| Publication | Agopian 2012 | Correa 2008 | Erickson 1991 | Hoang 2016 | Kovalenko 2018 | Leirgul 2016 | Sharpe 2005 | Vereczkey 2014 | Vinceti 2014 |
|--------------------------|----------------|---|-----------------|--------------------|-------------------|-------------------|-------------|-------------------|------------------|
| Risk estimate | aPR (CI) | aOR (CI) | OR (CI) | aPR (CI) | aOR (CI) | aRR (CI) | RR (CI) | OR (CI) | aPR (CI) |
| UVH | | | | 4.10 (1.67-10.08) | | | | NSA | |
| Conotruncal | | | | | | 3.54 (2.25-5.57) | | NSA | |
| Common truncus | | | NSA | 13.20 (5.24-33.25) | | | | NSA | |
| TGA | | 3.34 (1.11-10.07)*, 71.97 (7.43-696.81)** | 5.90 (2.2-15.8) | | | | NSA | NSA | NSA |
| ToF | | 4.89 (2.18-10.95)*, 6.00 (1.67-21.58)** | NSA | 2.47 (1.10-5.55) | | | | NSA | 4.69 (1.51-14.1) |
| DORV | | | | | | | | NSA | |
| Aortic arch defects | | | | | | | | | |
| AVSD | | 12.36 (3.68-41.49)*, 25.28 (4.20-152.11)** | | 5.33 (2.81-10.11) | 8.72 (3.16-24.07) | 6.38 (3.15-12.94) | | NSA | |
| TAPVR | 6.7 (3.7-12.4) | 7.12 (1.99-25.42)* | | 3.40 (1.95-5.93) | | NSA | | | |
| Ebstein's anomaly | | | | 6.28 (1.06-37.27) | | | | NSA | |
| LVOTO | | 4.58 (1.30-16.10)* | | 4.55 (2.93-7.05) | | 2.21 (1.14-4.26) | | | |
| CoA | | NSA | NSA | 4.27 (2.41-7.57) | | | | 5.94 (1.80-14.47) | |
| Aortic stenosis | | 5.01 (1.09-22.90)* | | 4.95 (2.46-9.97) | | | | | |
| RVOTO | | 9.61 (3.53-26.15)*, 9.83 (1.05-91.85)** | | 4.08 (2.93-5.70) | | NSA | | | |
| HLHS | | NSA | | 4.14 (1.55-11.02) | | | | NSA | |
| Pulmonary valve stenosis | | 1.44 (0.41-5.06)* | | 3.81 (2.68-5.50) | | | | | |
| Septal defects | | | | | | 2.65 (2.15-3.27)* | | | |
| VSD | | 2.89 (1.27-6.56)*, 7.70 (2.37-25.04)** | 2.65 (1.3-5.3) | 3.49 (2.99-4.08) | | | | NSA | NSA |
| ASD | | 8.47 (4.37-16.42)*, 13.46 (5.23-34.60)** | NSA | 2.89 (2.49-3.36) | | | | NSA | NSA |

541

542 Note: Risks are for PGDM if nothing else is stated. PGDM is defined as diabetes type 1 or type 2; * = isolated defects; ** = multiple defects, NSA = no significant
543 association

544 Abbreviations: aPR/aOR/aRR, adjusted; AVSD, atrioventricular septal defect; CI, 95% confidence interval; CoA, coarctation of the aorta; DORV, double outlet right
545 ventricle; LVOTO, left ventricular outflow tract obstruction; PGDM, pregestational diabetes; OR, odds ratio; PR, prevalence ratio; pregestational diabetes; RR, relative
546 risk; TAPVR, total anomalous pulmonary venous return; TGA, transposition of the great arteries; ToF, tetralogy of Fallot; UVH, univentricular heart

547 **Table 4.** Studies on gestational diabetes and subtypes of congenital heart defects

| Publication | Correa 2008 | Hoang 2016 | Leirgul 2016 |
|--------------------------|---|------------------|------------------|
| Risk estimate | aOR (CI) | aPR (CI) | aRR (CI) |
| UVH | | NSA | |
| Conotruncal | | | NSA |
| Common truncus | | 2.78 (1.17-6.60) | |
| TGA | NSA | | |
| ToF | 1.80 (1.12–2.87) * | NSA | |
| DORV | | | |
| Aortic arch defects | | | |
| AVSD | NSA | 1.54 (1.03-2.31) | NSA |
| TAPVR | NSA | 2.31 (1.53-3.49) | |
| Ebstein's anomaly | | NSA | |
| LVOTO | | 1.86 (1.54-2.25) | NSA |
| CoA | NSA | 2.23 (1.79-2.77) | |
| Aortic stenosis | NSA | 1.76 (1.18-2.62) | |
| RVOTO | NSA | 1.38 (1.15-1.66) | NSA |
| HLHS | NSA | NSA | |
| Pulmonary valve stenosis | 2.41 (1.59–3.64)*, 5.96 (1.86–19.11)** | NSA | |
| Septal defects | | | 1.27 (1.01–1.60) |
| VSD | NSA | 1.33 (1.20-1.48) | |
| ASD | 2.16 (1.46–3.21)*, 2.40 (1.19–4.82)** | 1.39 (1.27-1.52) | |

548

549 Note: *, isolated defects; ** multiple defects; NSA = no significant association

550 Abbreviations: aPR/aOR/aRR, adjusted; AVSD, atrioventricular septal defect; CI, 95% confidence interval; CoA, coarctation of the aorta; DORV, double outlet right
551 ventricle; LVOTO, left ventricular outflow tract obstruction; OR, odds ratio; PR, prevalence ratio; RR, relative risk; TAPVR, total anomalous pulmonary venous return;
552 TGA, transposition of the great arteries; ToF, tetralogy of Fallot; UVH, univentricular heart

553 **Table 5.** Study on the combination of gestational diabetes and maternal overweight/obesity and subtypes of congenital heart defects

| | |
|---------------|-------------|
| Publication | Gilboa 2010 |
| Risk estimate | aOR (CI) |

| | |
|------------|-----|
| UVH | NSA |
|------------|-----|

| | |
|---------------------|---------------------------------|
| Conotruncal | NSA |
| Common truncus | |
| TGA | NSA |
| ToF | BMI \geq 30: 2.38 (1.37-4.14) |
| DORV | |
| Aortic arch defects | |

| | |
|--------------------------|-----|
| AVSD | NSA |
| TAPVR | NSA |
| Ebstein's anomaly | NSA |

| | |
|-----------------------|---------------------------------|
| LVOTO | BMI \geq 30: 1.87 (1.15-3.05) |
| CoA | Overweight: 1.98 (1.01-3.87) |
| Aortic valve stenosis | NSA |

| | |
|--------------------------|--|
| RVOTO | Overweight: 2.06 (1.17-3.63); BMI \geq 30: 1.82 (1.09-3.03) |
| HLHS | Overweight: 2.48 (1.03-5.97); BMI \geq 30: 2.81 (1.40-5.64) |
| Pulmonary valve stenosis | BMI \geq 30: 2.21 (1.30-3.76) |

| | |
|-----------------------|---------------------------------|
| Septal defects | BMI \geq 30: 1.91 (1.35-2.70) |
| VSD | NSA |
| ASD | BMI \geq 30: 2.74 (1.82-4.14) |

554

555 Note: NSA = no significant association; overweight = BMI 25.0–29.9

556 Abbreviations: AVSD, atrioventricular septal defect; aOR, adjusted odds ratio; BMI, body mass index (kg/m^2); CI, 95% confidence interval; CoA, coarctation of the
557 aorta; DORV, double outlet right ventricle; LVOTO, left ventricular outflow tract obstruction; TAPVR, total anomalous pulmonary venous return; TGA, transposition of
558 the great arteries; ToF, tetralogy of Fallot; UVH, univentricular heart