

HAS COUNTRYWIDE LOCKDOWN WORKED AS A FEASIBLE MEASURE IN BENDING THE COVID-19 CURVE IN DEVELOPING COUNTRIES?

Khondoker Nazmoon Nabi^{a,*}, Md. Robiul Islam^b

^a*Department of Mathematics, Bangladesh University of Engineering and Technology (BUET), Dhaka-1000, Bangladesh.*

^b*Department of Computer Science and Engineering, Green University of Bangladesh, Dhaka-1207, Bangladesh.*

Abstract

In the absence of any effective vaccine and clinically proven treatment, experts thought that strict lockdown measures could be an effective way to slow down the spread of novel coronavirus. Despite the strict lockdown measures in several developing countries, the number of newly infected cases is getting unbridled as time progresses. This anomaly ignites questions about the effectiveness of the prolonged strict confinement measures. In light of the above view, with an aim to find the answer to this question, trends of four epidemiological parameters: growth factor of daily reported COVID-19 cases, daily incidence proportion, daily cumulative index and effective reproduction number in five developing countries named Bangladesh, Brazil, Chile, Pakistan and South Africa have been analysed meticulously considering the different phases of their national lockdowns. Any compelling evidence has not been found in favor of country-wide lockdown effectiveness in the above-mentioned countries. Numerical results illustrate that stringent nationwide lockdown measures have failed bringing the epidemic threshold (R_e) of COVID-19 under unity. In addition, citizens of the aforementioned countries have been struggling with catastrophic socio-economic consequences due to prolonged confinement measures. Our study suggests that a new policy should be proposed for developing countries to battle against future disease outbreaks ensuring a perfect balance between saving lives and confirming livelihoods.

Keywords: COVID-19; growth factor; effective reproduction number; disease generation interval; disease incidence; daily cumulative index; lockdown effectiveness

*Corresponding author

Email address: nabinil@yahoo.com (Khondoker Nazmoon Nabi)

NOTE: This preprint reports new research that has not been certified by peer review and should not be used to guide clinical practice.

1. Introduction

On the eve of January, 2020, Chinese scientists identified a new respiratory virus named the novel coronavirus which has a virulent nature. With an intention to rein in the spread of the virus, an unprecedented aggressive lockdown has been imposed in Wuhan and in other cities in Hubei without any delay. Though this massive scale confinement strategy was discouraged by many experts in the primitive stage, as time progresses this policy has been applauded as an effective model of lockdown [Lau et al., \(2020\)](#). Meanwhile, the World Health Organisation (WHO) announced a global health emergency considering the severe transmissibility of COVID-19 on January 30, 2020 [Nabi \(2020\)](#).

In the wake of the outbreak of COVID-19 pandemic, numerous individuals who are living abroad mainly for work or travel purpose started returning back to their native countries promptly. This uncontrollable influx of arriving passengers from COVID-19 affected countries played a significant role in spreading COVID-19 transmission into the respective local population comprehensively [Guilherme et al., \(2020\)](#). The scenario started to exacerbate gradually because of inadequate screening of on-arrival suspected cases. Due to under-resourced and fragile health care systems in several cases, most of the developing countries failed to launch emergency plan initially to battle against this pandemic. Owing to underreporting on the early stage of the disease outbreak and scarcity of medical equipment and diagnostic kits to identify the potential spreaders, these countries failed to halt the initial outbreak of the virus [Nabi \(2020\)](#).

In the absence of any effective vaccine and clinically established treatment, any affected country could think of only two possible strategies to bring a control over the pandemic at an early stage of the outbreak [Gollier \(2020\)](#). Firstly, the entire population could be exposed to the virus with an aim to develop herd immunity in the community in a progressive way. However, in this way a targeted population (often elderly people) could die which would be highly unethical. Another strategy could be to enforce non-pharmaceutical measures like strict lockdown measures, social distancing, mandatory self or home quarantine, wearing masks and so on. Most of the countries even developing countries are no exceptions, opted for the second option without planning much about future economic shockwaves of the pandemic. With an eye towards stanching the spread of the virus, stay-at-home orders, prohibiting large gatherings of individuals and closures of all types of educational institutions and non-essential business have been imposed comprehensively. As a time-tested strategy for battling against COVID-19, restrictions on traveling have been imposed by the respective governments in developing countries. Maximum countries issued centralized quarantine orders for fourteen days to the inhabitants who have been tested positive or have had contact history with infected individuals. Stringent mask-wearing and strict physical distancing have been promoted as mass awareness program to curtail the risk of COVID-19 transmission. With an aim to ensure smooth supply chains for essential services, most of the governments allowed transportation of essential goods. Importantly, government officials continued allowing restrictive connectivity between country's capital city and other cities amid the coronavirus outbreak as capital city always plays a remarkable role in a developing country's economy [Kamruzzaman \(2020, May 28\)](#); [Rivers & Gallón \(2020, June 3\)](#); [Sajid & Latif \(2020, March 24\)](#). As a consequence, community transmission began to show up in a large scale in the developing countries.

47 To date, most of the developing countries are struggling hard to cope with the
48 unforeseen socio-economic aftermaths of harsh confinement policies compared to the
49 developed countries. Developing countries could face a net income loss of US 220
50 billion according to a report of the UN Development Programme (UNDP) [United
51 Nations \(2020\)](#). Daily wage workers who are considered as the most vulnerable section
52 of developing countries, have been struggling to meet up their daily income since the
53 beginning of the outbreak. In addition, such massive income losses could severely affect
54 their lifestyle as they do not possess any basic food security at all. For instance, some
55 recent studies have enlightened the fact that the agro-based industries and different
56 service sectors in Bangladesh are incurring a loss of about US 0.338 billion on daily
57 basis. Importantly, a loss of about US 2.51 billion had been incurred by the ready-made
58 garments sector, which is the key driving force of the country's entire export earnings
59 [Ahmed \(2020, June 10\)](#). Moreover, small businesses and startups being the worst hit
60 are expected to incur a loss of around US 582 billion amid this pandemic [Mahmood
61 \(2020, May 30\)](#). According to another research findings, the economic fallouts from
62 the global pandemic could increase global poverty by affecting as much as half a billion
63 people, or 8% of the global population. As a consequence, it would be really difficult
64 to achieve the Sustainable Development Goals (SDGs) 2030 on no poverty and zero
65 hunger [Mahmood \(2020, May 30\)](#). At present, with an aim to revive country's nearly
66 crippled economy, governments of several developing countries have been compelled
67 to lift lockdown restrictions amid continuous spikes in both new COVID-19 cases and
68 deaths. This seemingly ignites a fact that something went wrong in these developing
69 countries which requires broad-ranging research.

70 In light of the above view, the main objective of this study is to quantify the
71 impact and effectiveness of widespread lockdowns in five developing countries named
72 Bangladesh, Brazil, Chile, Pakistan and South Africa [ICQI \(2020\)](#) using four insightful
73 epidemiological parameters: growth factor of daily infected cases, daily disease inci-
74 dence proportion, daily cumulative index and effective reproduction number.

75 **2. Materials and methods**

76 In this study, trends of four significant epidemiological metrics: growth factor (GF),
77 daily incidence proportion (DIP), daily cumulative index (DCI) and effective reproduc-
78 tion number have been analysed to take a deeper look into the transmission dynamics
79 of COVID-19 in five developing countries in the world: Bangladesh, Brazil, Chile, Pak-
80 istan, and South Africa. Daily updates of confirmed COVID-19 cases for the above-
81 mentioned countries have been collected from a trusted online repository [Our World in
82 Data COVID-19 Dataset \(2020\)](#). The main reason for selecting the above-mentioned
83 developing countries is governments of these countries have been trying earnestly to
84 slow down the spread of the novel coronavirus by imposing strict lockdown measures
85 from the early stage of the outbreak. However, these countries have been witnessing
86 new records of infections and deaths with the passage of time in spite of imposing strin-
87 gent confinement measures by sacrificing all kinds of economic activities. Henceforth,
88 the effectiveness of countrywide lockdown in developing countries for a prolonged pe-
89 riod has become a burning question for research communities as well as policymakers
90 [Meunier \(2020\)](#).

Growth factor (GF) of the daily infected cases of COVID-19 has been used in this study as an insightful metric to understand the progression of a outbreak in any country [Tang & Wang, \(2020\)](#). A 5-day moving average of the daily infected cases of COVID-19 has been applied to calculate the growth factor of daily infected cases. This can be estimated by taking the average of the values of the observing day data, the previous two days data and the future two days data. It has been found that the number daily reported COVID-19 cases is somewhat noisy and volatile due to inconsistent daily testing numbers. To generate a better realistic scenario in any developing country, the 5-day moving average of the daily confirmed cases has been used [Ganyani et al., \(2020\)](#). The daily growth factor of COVID-19 new infections has been calculated using the following expression with an aim to understand the progression of the novel coronavirus in any country.

$$\text{Growth Factor } (r) = \frac{\text{Today's reported cases of COVID-19}}{\text{Yesterday's reported cases of COVID-19}}$$

91 For any country, $r > 1$ depicts that the trend curve of new infections blows up expo-
92 nentially, whereas $r < 1$ represents that the same curve decays to zero.

Daily incidence proportion (DIP) is the next epidemiological risk measure which has been used to estimate the probability of developing disease in any country [Lai et al., \(2020a\)](#) and [Lai et al., \(2020b\)](#). In an outbreak setting, from this estimation we can get a deeper understanding of disease progression as well as frequency of daily occurrence of new COVID-19 cases within a population as time progresses. It can also be referred as an attack rate or risk of developing any disease. As discussed earlier, a 5-day moving average of daily new infected cases has been used to calculate the DIP (per 1,000,000 per day) using the following expression:

$$\text{Incidence proportion} = \frac{\text{No. of daily new infected cases}}{\text{No. of individuals at risk of getting infected}} \times 1000000$$

93 The denominator represents susceptible population in any country i.e. individuals who
94 have the probability of getting infected with the disease. A high DIP depicts that the
95 disease is transmitting into the population at an excessive rate. On the other hand,
96 a low DIP indicates a minimal disease transmission in any community. In addition,
97 disease incidence is positively correlated with mortality according to a recent study [Lai](#)
98 [et al., \(2020b\)](#). Henceforth, to understand the severity of any disease outbreak, disease
99 incidence proportion is an insightful epidemiological parameter.

Daily cumulative index (DCI) is used as one of the most significant indicators to understand the evolution dynamics of any epidemic. Recent studies [Lai et al., \(2020a\)](#) and [Lai et al., \(2020b\)](#) have enlightened the fact that this indicator could give robust understanding about the average daily number of new infected cases in a country. It has been observed in recent studies that DCI is significantly correlated with mortality compared to disease incidence [Lai et al., \(2020b\)](#). DCI can be defined as follows:

$$\text{DCI} = \frac{\text{No. of cumulative cases on the observing day}}{\text{No. of days between the first reported case and the observing day}}$$

100 A continuous uptrend of DCI indicates that the average number of infected individuals
101 is increasing sharply on a daily basis, whereas a constant declining trend of DCI depicts

102 the fact that the mean value of daily infections is declining. A reduction in DCI can be
103 achieved by imposing successful infection control measures. Henceforth, trend analysis
104 of DCI plays a noticeable role in understanding the effectiveness of various disease
105 control measures.

To quantify the transmissibility of an epidemic, effective reproduction number (R_e) can be regraded as one of the most insightful epidemiological parameters. This significant metric represents the average number of secondary infections caused by an individual who has the capability to transmit any disease in an entirely susceptible population [Nabi \(2020\)](#). To date, sophisticated statistical methods have been employed to estimate the value of R_e precisely from the confirmed number of daily infected cases. Nevertheless, it is often really challenging to determine reliable estimates of R_e from available information. In our study, disease generation interval which refers to the duration between symptom onset of the primary case and the symptom onset of the secondary case has been used to estimate the effective reproduction number (R_e) of COVID-19 [Kohlberg & Abraham, \(2020\)](#). In several recent studies [Ganyani et al., \(2020\)](#); [Nishiura et al., \(2020\)](#); [Du et al., \(2020\)](#), it has been found that the mean generation interval of COVID-19 is approximately 4 days. By using the generation interval of COVID-19, R_e can easily be calculated from daily new infections using the following expression [Kohlberg & Abraham, \(2020\)](#):

$$\begin{aligned} \text{Today's number of newly infected cases} &= \\ R_e \times \text{Number of infected cases 4 days ago} \end{aligned}$$

Consequently, R_e can be expressed as follows:

$$R_e = \frac{\text{Today's number of newly infected cases}}{\text{Number of infected cases 4 days ago}}$$

106 Generally, the true number of infected cases is relatively higher than the confirmed
107 number of cases. Our estimation would not be affected for such discrepancies. For
108 instance, if the actual number of cases is three times higher than the reported number
109 of cases, then the multiplying factor will cancel out in the division. To smooth out
110 the fluctuations in number of testing, a 5-day moving average of daily reported cases
111 has been used in this study. A simple overview of disease burden can be gleaned using
112 this basic approximation of the effective reproduction number in terms of two simple
113 empirical parameters.

114 **3. Numerical results and discussions**

115 *3.1. Bangladesh*

116 On March 8, 2020, the very first case of COVID-19 was confirmed by the Institute
117 of Epidemiology, Disease Control and Research (IEDCR) of Bangladesh [Paul \(2020,](#)
118 [March 8\)](#). As the country witnessed the first death case due to the COVID-19, the
119 government officials reacted swiftly and announced closures of all educational institu-
120 tions from March 18 onwards. Afterwards, when there were 27 active COVID-19 cases
121 out of 39 total cases, the government decided to enforce a countrywide lockdown to
122 slow down the transmission of the virus with an exemption for the emergency services

123 from March 26 [Mithu & Ahmed \(2020, March 24\)](#). This lockdown can be regarded as
 124 the most strict lockdown until the decision of reopening shops and malls maintaining
 125 health guidelines for limited time period came into force from May 10. This decision of
 126 strict lockdown was taken by the officials under immense pressure regarding the biggest
 127 Muslim festival (Eid-Ul-Fitr). It has been found in our study that the growth factor of
 128 new infections followed a downward trend and reached 0.3 before the lockdown could
 129 have been responsible for such decline ([Fig. 1b](#)). Disease incubation period (around 5
 130 days [Nabi \(2020\)](#)) should be considered in this regard to determine the earliest effect
 131 of the imposed lockdown. Nevertheless, after five days of the lockdown a noticeable
 132 upswing of growth factor has been developed and hovered between 1.66 and 2 for one
 133 week ([Fig. 1b](#)). On the last day of this lockdown phase, the number of cumulative
 134 cases surpassed 14657. In addition, an average growth factor of 1.165 (95% confidence
 135 interval (CI): 1.08-1.25) in daily confirmed cases was conspicuous in this entire period
 136 ([Table 1](#)). In the second lockdown phase, it has been observed that the growth fac-
 137 tor maintained a incessant trend (Mean: 1.05; SD: 0.05) even though the lockdown
 138 intensity has been lowered. Moreover, daily incidence proportion and daily cumulative
 139 index both got doubled in this period ([Figs. 1d and 1e](#)). After a 66-day countrywide
 140 lockdown period, government officials have been compelled to lift the lockdown with
 141 some health guidelines from June 1 considering the catastrophic economic recession
 142 [Kamruzzaman \(2020, May 28\)](#). The strict lockdown policy has been unsuccessful to
 143 force down the epidemic threshold below 1 ([Fig. 1f](#)). When a strict two-month long
 144 lockdown policy has failed to flatten the contagion curve, then the effectiveness of the
 145 most optimistic lockdown theories remains as an enigma.

Table 1: Growth factor of daily infected cases, daily incidence proportion, daily cumulative index and effective reproduction number in **Bangladesh** considering different lockdown phases from March 8 to June 12.

Epidemiological Parameter	Before lockdown		Most strict lockdown ^a		Strict lockdown ^b		Unlockdown ^c	
	Mean [95% CI]	SD	Mean [95% CI]	SD	Mean [95% CI]	SD	Mean [95% CI]	SD
Growth Factor (GF)	1.31 [1, 1.62]	0.5	1.165 [1.08, 1.25]	0.305	1.05 [1.03, 1.076]	0.054	1.03 [1.02, 1.04]	0.02
Daily Incidence Proportion (DIP)	0.039 [0.023, 0.054]	0.033	5.4 [4.1, 6.74]	4.64	26.1 [23.2, 29.1]	6.89	48.1 [45.4, 50.8]	4.8
Daily Cumulative Index (DCI)	1.255 [0.9, 1.61]	0.765	73.8 [52.3, 95.3]	74.45	384.8 [343.1, 426.4]	97.4	705.9 [657.9, 754]	84.9
Effective Reproduction Number	2.78 [1.54, 4.01]	2	2.244 [1.59, 2.89]	2.25	1.22 [1.16, 1.27]	0.13	1.15 [1.1, 1.2]	0.09

^a The most strict countrywide lockdown was effective from 26 March to 9 May.

^b Strict lockdown was effective from May 10 to May 31.

^c Lockdown has been lifted from June 1 onwards.

146 3.2. Brazil

147 Brazil is currently the second-worst COVID-19 affected countries in the world and
 148 has strong possibility to outnumber the tally of infected cases reported in the United
 149 States which is holding the leading position as of June 14, 2020. On February 25, a
 150 61-year-old man who returned from Italy was reported as the first COVID-19 case in
 151 Brazil [Siciliano et al., \(2020\)](#). In response, Brazilian Health Ministry recommended at
 152 least 7-day isolation for both Brazilians and travellers arriving from outside. On March
 153 23, officials of Rio de Janeiro imposed a strict lockdown in the state which is followed
 154 by Sao Paulo from the next day [Mello & Gaier \(2020, April 9\)](#). A downtrend in growth

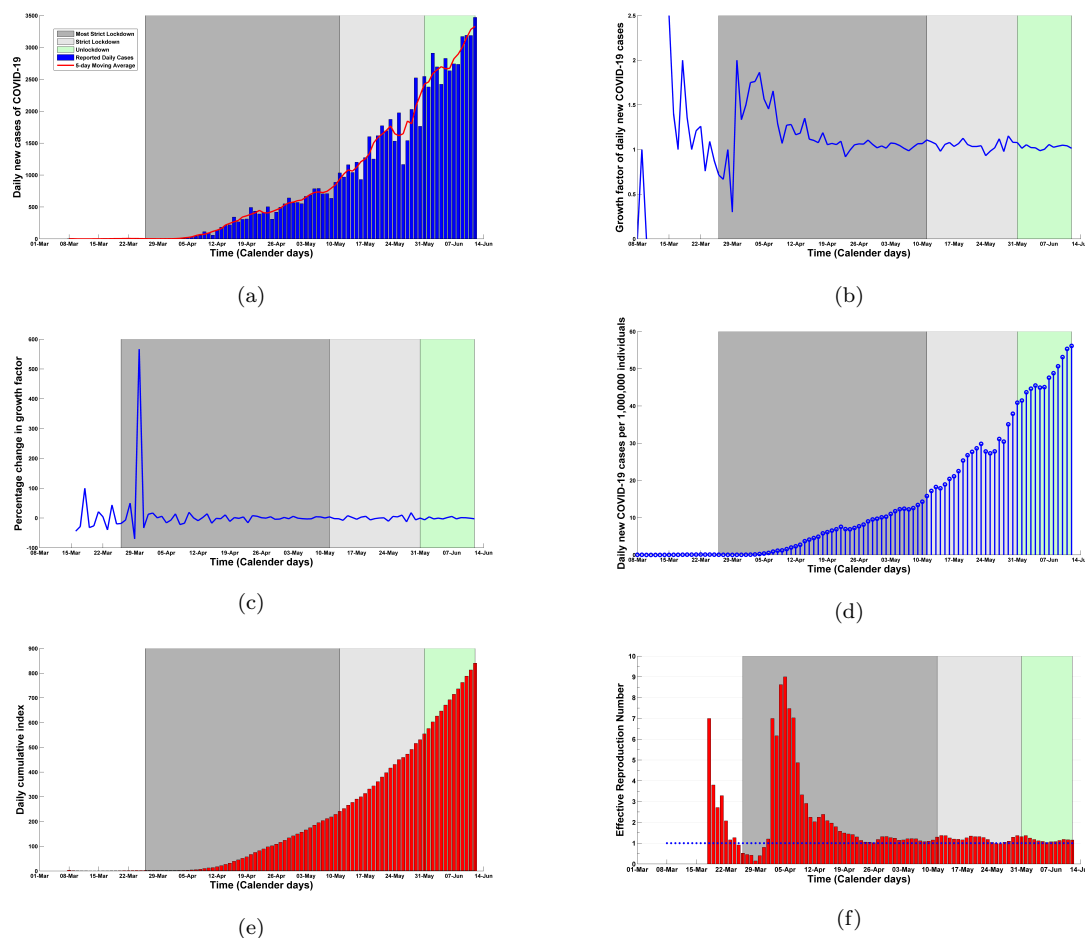


Figure 1: (a) Daily confirmed cases and 5-day moving average of daily cases, (b) growth factor, (c) percentage change in growth factor, (d) daily incidence proportion, (e) daily cumulative index and (f) effective reproduction number considering different lockdown phases in **Bangladesh** from March 8 to June 12. The intensities of different lockdown phases have been indicated in different colors: before lockdown (8/03/2020 – 25/03/2020); most strict lockdown (26/03/2020 – 09/05/2020); strict lockdown (10/05/2020 – 31/05/2020); unlockdown (1/06/2020 – 12/06/2020).

155 factor (GF) was evident before the enforcement of the strict sublockdown in Brazil
 156 (Fig. 2b). During the sublockdown phase, GF maintained a constant mean value of
 157 1.08 (95% CI: 1.04-1.11) with standard deviation (SD) around 0.1 (Table 2). Brazil
 158 eased its lockdown from June 2 with a view to mitigating the deeper economic recession
 159 in the country Rivers & Gallón (2020, June 3). Despite the prolonged lockdown, the
 160 rate of growth of new infections was almost identical with negligible deviation from
 161 the mean value (Table 2). Galloping growths in both DIP and DCI were evident in
 162 different lockdown periods (Figs. 2d and 2e). Importantly, the effective reproduction
 163 number could not be brought under unity (Fig. 2f) in spite of having more than two
 164 months of lockdown (Table 2).

Table 2: Growth factor of daily infected cases, daily incidence proportion, daily cumulative index and effective reproduction number in **Brazil** considering different lockdown phases from February 25 to June 11.

Epidemiological Parameter	Before lockdown		Strict sublockdown ^a		More strict sublockdown ^b		Easing of lockdown ^c	
	Mean [95% CI]	SD	Mean [95% CI]	SD	Mean [95% CI]	SD	Mean [95% CI]	SD
Growth Factor (GF)	1.44 [1.24, 1.65]	0.49	1.08 [1.04, 1.11]	0.1	1.06 [1.03, 1.09]	0.08	1.03 [0.98, 1.088]	0.09
Daily Incidence Proportion (DIP)	0.78 [0.27, 1.31]	1.36	23 [18.28, 27.7]	13.4	192.4 [159.6, 225.3]	104.7	440.7 [413, 468.5]	46.9
Daily Cumulative Index (DCI)	7.33 [2.9, 11.8]	11.5	338.2 [259.8, 416.6]	222.7	2477 [2070, 2880]	1288	6240 [5860, 6630]	649.1
Effective Reproduction Number	4.27 [2.96, 5.59]	3.08	1.42 [1.29, 1.55]	0.36	1.27 [1.21, 1.34]	0.22	1.07 [0.99, 1.15]	0.14

^a First strict sublockdown was enforced on 23 March.

^b More strict sublockdown was effective between 24 April and 1 June.

^c Lockdown has been eased on 2 June.

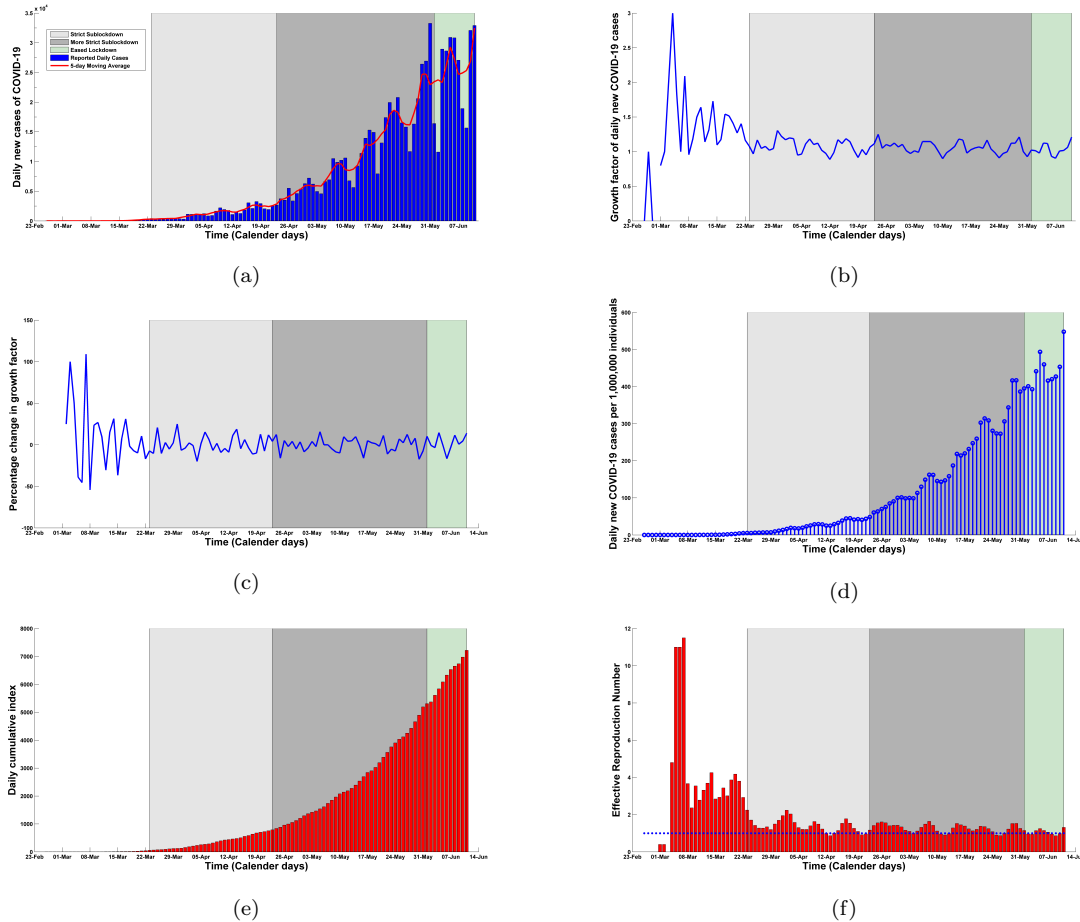


Figure 2: (a) Daily confirmed cases and 5-day moving average of daily cases, (b) growth factor, (c) percentage change in growth factor, (d) daily incidence proportion, (e) daily cumulative index and (f) effective reproduction number considering different lockdown phases in **Brazil** from February 25 to June 11. The intensities of different lockdown phases have been indicated in different colors: before lockdown (25/02/2020–22/03/2020); strict sublockdown (23/03/2020–23/04/2020); more strict lockdown (24/04/2020–1/06/2020); easing of lockdown (2/06/2020–11/06/2020).

165 3.3. Chile

166 The very first case of COVID-19 who had fresh travel history to Italy, was reported
 167 in Chile on March 3, 2020 [Ministry of Health, Chile \(2020\)](#). Afterwards, a faster growth
 168 rate of new infections (reached upto 2.3) was evident ([Fig. 3b](#)) and within 20 days the
 169 South American nation surpassed 632 confirmed COVID-19 cases [Ministry of Health,
 170 Chile \(2020\)](#). With an aim to stem the spread of coronavirus, a nationwide night-time
 171 2200-0500 curfew was announced by the Chile’s government on March 22 [Sherwood
 172 \(2020, March 22\)](#). [Fig. 3a](#) illustrates that the daily reported infected cases and its 5-day
 173 moving average between March 3 and June 13. Before the nightly curfew, the mean
 174 growth factor of daily infections was estimated to be around 1.09 (95% CI: 1.05-1.13)
 175 ([Table 3](#)). Nevertheless, the number of daily infected cases continued to creep upwards
 176 incessantly and community transmission could not be checked in this curfew period. In
 177 consequence, Chile’s government ratcheted up the restrictive measures by introducing
 178 general mandatory quarantine for the citizens in an effort to force down the contagion
 179 rate. In this phase, growth factor maintained a continuous upward trend and reached
 180 a maximum value of 1.26 on May 1 ([Fig. 3b](#)). In addition, a sharp daily increase of
 181 about 22% in growth factor was noticeable in this curfew period ([Fig. 3b](#)). As of May
 182 15, a complete shutdown of country’s capital Santiago was imposed as 80% of infected
 183 cases were identified in the capital [Aljazeera \(2020, May 14\)](#). Despite the strict curfew
 184 across the country, the daily cases per 1,000,000 individuals (daily incidence) soared up
 185 from 28.3 to 104.1 and the daily cumulative index shot up from 429 to 1580 within just
 186 32 days ([Figs. 3d and 3e](#)). This continuous upswing in new infections raised questions
 187 about the efficacy of the most optimistic theories of lockdown. Importantly, [Fig. 3f](#)
 188 depicts that this strict confinement measures have failed to bring down the epidemic
 189 threshold below 1. The mean value of this insightful epidemiological parameter was 1.19
 190 (95% CI: 1.14-1.26) in this above-mentioned period and according to our estimation
 191 this metric is going to maintain an upward trajectory in the upcoming days. As of
 192 June 13, Chileans are facing continuous spikes in daily cases and health care services
 193 are struggling to cope with this unforeseen crisis in spite of ongoing stringent curfew.

Table 3: Growth factor of daily infected cases, daily incidence proportion, daily cumulative index and effective reproduction number in **Chile** considering different lockdown phases from March 3 to June 13.

Epidemiological Parameter	Before lockdown		Nationwide nightly curfew ^a		More strict curfew ^b		Shutdown of country’s capital ^c	
	Mean [95% CI]	SD	Mean [95% CI]	SD	Mean [95% CI]	SD	Mean [95% CI]	SD
Growth Factor (GF)	1.24 [1.02, 1.46]	0.48	1.09 [1.05, 1.13]	0.08	1.04 [1.02, 1.07]	0.07	1.05 [1.03, 1.07]	0.06
Daily Incidence Proportion (DIP)	0.41 [0.18, 0.64]	0.49	4.35 [3.64, 5.05]	1.48	11.87 [9.69, 14.06]	6.5	67.67 [60.87, 74.47]	19.9
Daily Cumulative Index (DCI)	6.44 [3.13, 9.76]	7.16	80.2 [62.8, 97.5]	36.5	248.7 [222.9, 274.5]	76.7	962.9 [841.2, 1084]	356.4
Effective Reproduction Number	2.64 [1.78, 3.5]	1.86	1.49 [1.33, 1.64]	0.33	1.2 [1.11, 1.29]	0.27	1.19 [1.14, 1.26]	0.18

^a First nationwide night-time curfew was enforced on 22 March.

^b More strict nationwide night-time curfew with mandatory quarantine restrictions was effective from 9 April and 14 May.

^c Santiago which is the capital of Chile has been locked down on 15 May.

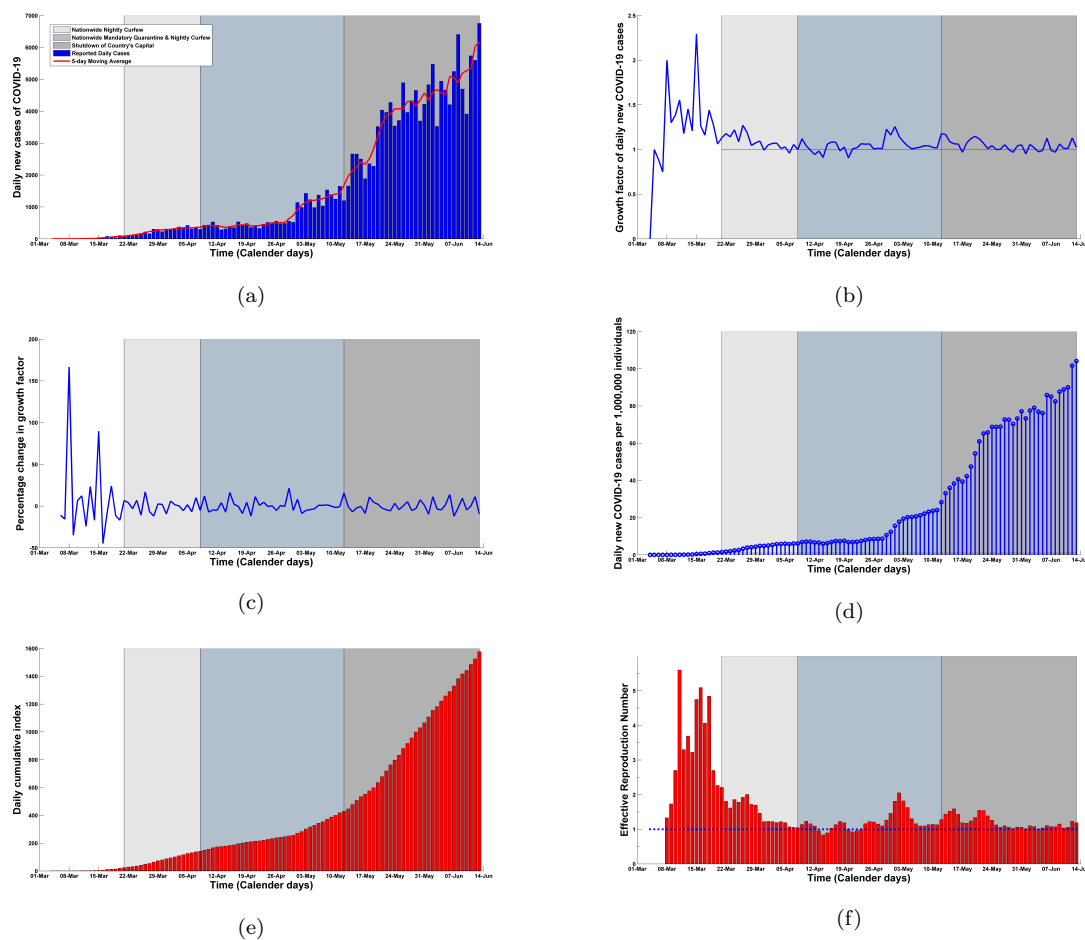


Figure 3: (a) Daily confirmed cases and 5-day moving average of daily cases, (b) growth factor, (c) percentage change in growth factor, (d) daily incidence proportion, (e) daily cumulative index and (f) effective reproduction number considering different lockdown phases in **Chile** from March 3 to June 13. The intensities of different lockdown phases have been indicated in different colors: before curfew (03/03/2020–21/03/2020); nationwide nightly curfew (22/03/2020–8/04/2020); more strict curfew (9/04/2020–14/05/2020); shutdown of country’s capital (15/05/2020–13/06/2020).

194 3.4. Pakistan

195 In Pakistan, a battle against the novel coronavirus has been started on February 26,
 196 with the identification of two COVID-19 positive cases who returned from Iran which
 197 was the worst-hit country at that time in Asian region [Shahid \(2020, February 27\)](#).
 198 With an aim to stanch the pandemic outbreak, a strict nationwide lockdown was forced
 199 by the officials of Pakistan in the middle of March [Donaldson \(2020, March 26\)](#). Growth
 200 factor had already begun to decline and reached 0.994 before the forced lockdown could
 201 have brought it under control ([Fig. 4b](#)). On March 31, government officials decided to
 202 lessen the intensity of the lockdown considering the economic recession and announced
 203 to open all kinds of transportation across the country [Sajid & Latif \(2020, March 24\)](#).
 204 During this partial lockdown period, daily incidence of COVID-19 ticked up from 1 to
 205 28.3 and daily cumulative index also surpassed 376 following an upward trend ([Figs.](#)
 206 [4d](#) and [4e](#)). In this period, impoverished people started venturing out from their house

207 in search of work as a significant number of people are dependent on daily wages.
 208 As the pandemic began to cripple Pakistan’s economy drastically, the government was
 209 compelled to take the decision of unlockdown with effect from May 9 [Gulf Today \(2020,](#)
 210 [May 9\)](#). Notably of all, in this unlockdown phase, it has been found in our analysis
 211 that the growth factor maintain an incessant trend with the mean value of around 1.04
 212 (95% CI: 1.02-1.06, SD: 0.06) which is much lower than the average values of both
 213 the lockdown periods ([Table 4](#)). This enlightens that the highly debated unlockdown
 214 policy has not brought any significant change in the growth factor of new infections
 215 ([Fig. 4c](#)). Moreover, [Fig. 4f](#) illustrates that the effective reproduction number also
 216 plateaued during this unlockdown period (Mean: 1.19; 95% CI: 1.12-1.27) ([Table 4](#)).
 217 Social distancing measures and stringent mask wearing guidelines may have been the
 218 actual trigger for forcing down this crucial parameter.

Table 4: Growth factor of daily infected cases, daily incidence proportion, daily cumulative index and effective reproduction number in **Pakistan** considering different lockdown phases from February 26 to June 12.

Epidemiological Parameter	Before lockdown		Forced lockdown ^a		Partial lockdown ^b		Unlockdown ^c	
	Mean [95% CI]	SD	Mean [95% CI]	SD	Mean [95% CI]	SD	Mean [95% CI]	SD
Growth Factor (GF)	1.52 [0.34, 2.7]	2.48	1.76 [0.53, 3]	2.5	1.07 [1.02, 1.12]	0.16	1.04 [1.02, 1.06]	0.06
Daily Incidence Proportion (DIP)	0.02 [0.015, 0.033]	0.02	1.62 [1.34, 1.89]	0.57	10.5 [8.46, 12.56]	6.53	48.3 [40.2, 56.5]	24.6
Daily Cumulative Index (DCI)	0.94 [0.75, 1.13]	0.4	25.4 [18.1, 32.65]	14.8	169.7 [141.96, 197.4]	88.3	688.7 [613.7, 763.7]	226.4
Effective Reproduction Number	2.68 [0.58, 4.77]	4.4	5.63 [1.5, 9.76]	8.4	1.34 [1.22, 1.46]	0.39	1.19 [1.12, 1.27]	0.22

^a First lockdown was enacted from 15 March, 2020.

^b Partial lockdown was effective from 31 March to 8 May.

^c Lockdown has been lifted on 9 May.

219 3.5. South Africa

220 In South Africa, the National institute for communicable diseases (NICD) first con-
 221 firmed COVID-19 patient who returned back in South Africa from Italy on March 1,
 222 2020 [South African Ministry of Health \(2020\)](#). To quell the progression of the out-
 223 break, South Africa’s government launched a master plan of five-tier lockdown system
 224 which came into effect on March 26, 2020 [Business Tech \(2020, March 23\)](#). Before
 225 the imposition of the most strict (level-5) lockdown, the growth factor of new infec-
 226 tions started to decline and reached its minimum value of 0.493 ([Fig. 5b](#)). Disease
 227 incubation period (around 5 days [Nabi \(2020\)](#)) should be considered in this regard
 228 to understand the earliest impact of the strict confinement measures. However, the
 229 growth rate began to soar and raised above 1 during this lockdown period ([Table 5](#)).
 230 After around one month, the entire country moved into a less strict lockdown (level-4)
 231 with stringent health protocols [Voice of America \(2020, March 14\)](#). Despite imposing
 232 harsh confinement measures, daily incidence continued to increase from 4.73 to 28.4
 233 and daily cumulative index surged from 95.5 to 355 ([Figs. 5d and 5e](#)). As the economic
 234 pressure reached boiling point and several million people were struggling with hunger
 235 and managing their livelihoods, government have been compelled to ease the intensity
 236 of the lockdown from June 1 onwards [Aljazeera \(2020, May 25\)](#). In this new lockdown
 237 (level-3) period, epidemic threshold maintained an average value of 1.22 (95% CI: 1.11-
 238 1.32) with a small standard deviation of 0.17 ([Table 5](#)). In a nutshell, a two-month long

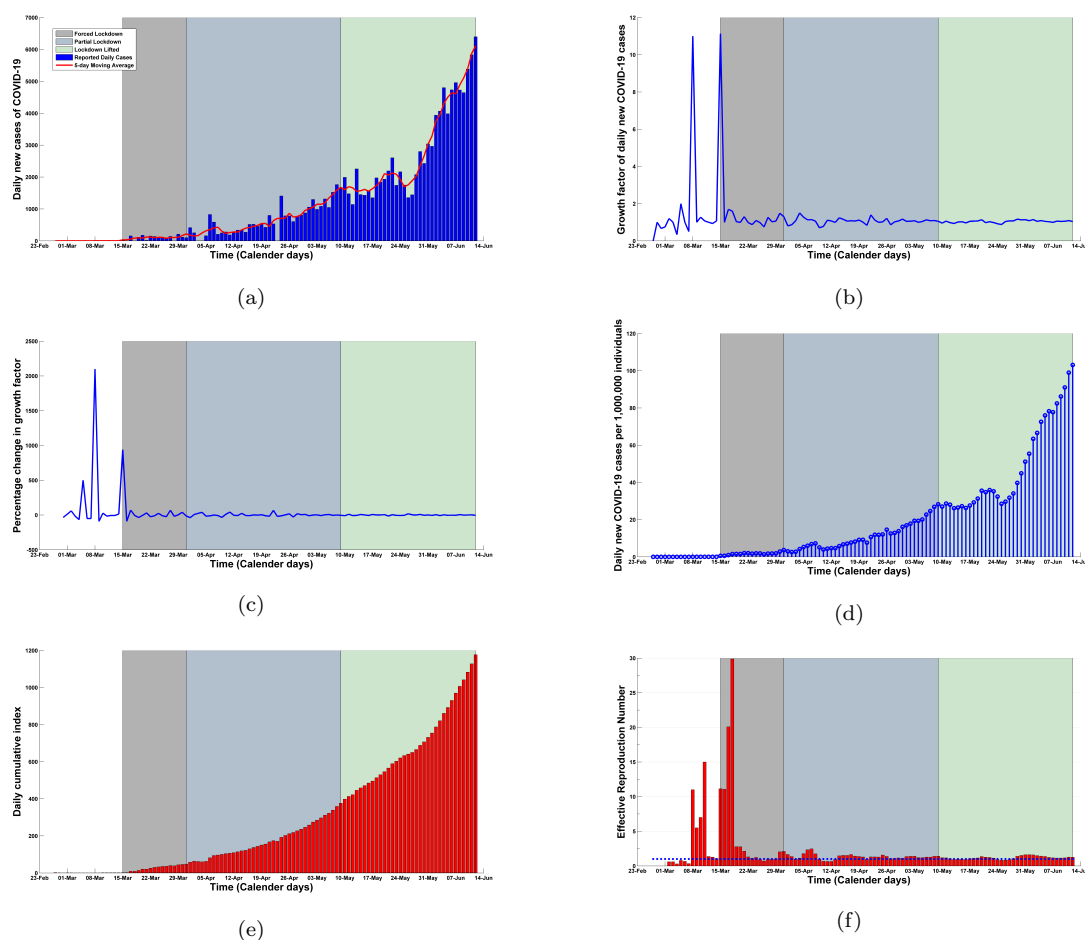


Figure 4: (a) Daily confirmed cases and 5-day moving average of daily cases, (b) growth factor, (c) percentage change in growth factor, (d) daily incidence proportion, (e) daily cumulative index and (f) effective reproduction number considering different lockdown phases in **Pakistan** from February 26 to June 12. The intensities of different lockdown phases have been indicated in different colors: before lockdown (26/02/2020–14/03/2020); forced lockdown (15/03/2020–30/03/2020); partial lockdown (31/03/2020–08/05/2020); unlockdown (09/05/2020–12/06/2020).

239 lockdown has failed to bring the effective reproduction number under unity and bend
 240 the daily incidence curve as well (Figs. 5f and 5d). Despite the enforcement of strin-
 241 gent confinement policies, the outbreak situation is exacerbating as time progresses
 242 with new records in both infected and death cases.

Table 5: Growth factor of daily infected cases, daily incidence proportion, daily cumulative index and effective reproduction number in **South Africa** considering different lockdown phases from March 1 to June 10.

Epidemiological Parameter	Before lockdown		Most strict lockdown ^a		More strict lockdown ^b		Strict lockdown ^c	
	Mean [95% CI]	SD	Mean [95% CI]	SD	Mean [95% CI]	SD	Mean [95% CI]	SD
Growth Factor (GF)	1.32 [1.11, 1.532]	0.494	1.03 [0.97, 1.08]	0.16	1.06 [1.04, 1.08]	0.06	1.036 [0.988, 1.086]	0.08
Daily Incidence Proportion (DIP)	0.6 [0.25, 0.96]	0.84	2.21 [1.83, 2.596]	1.15	13.9 [11.6, 16.23]	6.58	37.22 [33.66, 40.78]	5.74
Daily Cumulative Index (DCI)	8.29 [4.23, 12.35]	9.49	62.23 [57.43, 67.04]	14.5	201.4 [174.2, 228.6]	77.2	455.2 [416.5, 493.9]	62.4
Effective Reproduction Number	2.86 [2.08, 3.652]	1.84	1.17 [1.05, 1.29]	0.36	1.28 [1.23, 1.32]	0.15	1.22 [1.11, 1.32]	0.174

^a The most strict national lockdown (Level 5) was imposed on 26 March.

^b Stricter lockdown (Level 4) was effective from 1 May to 31 May.

^c National restrictions has been eased (Level 3) on 1 June.

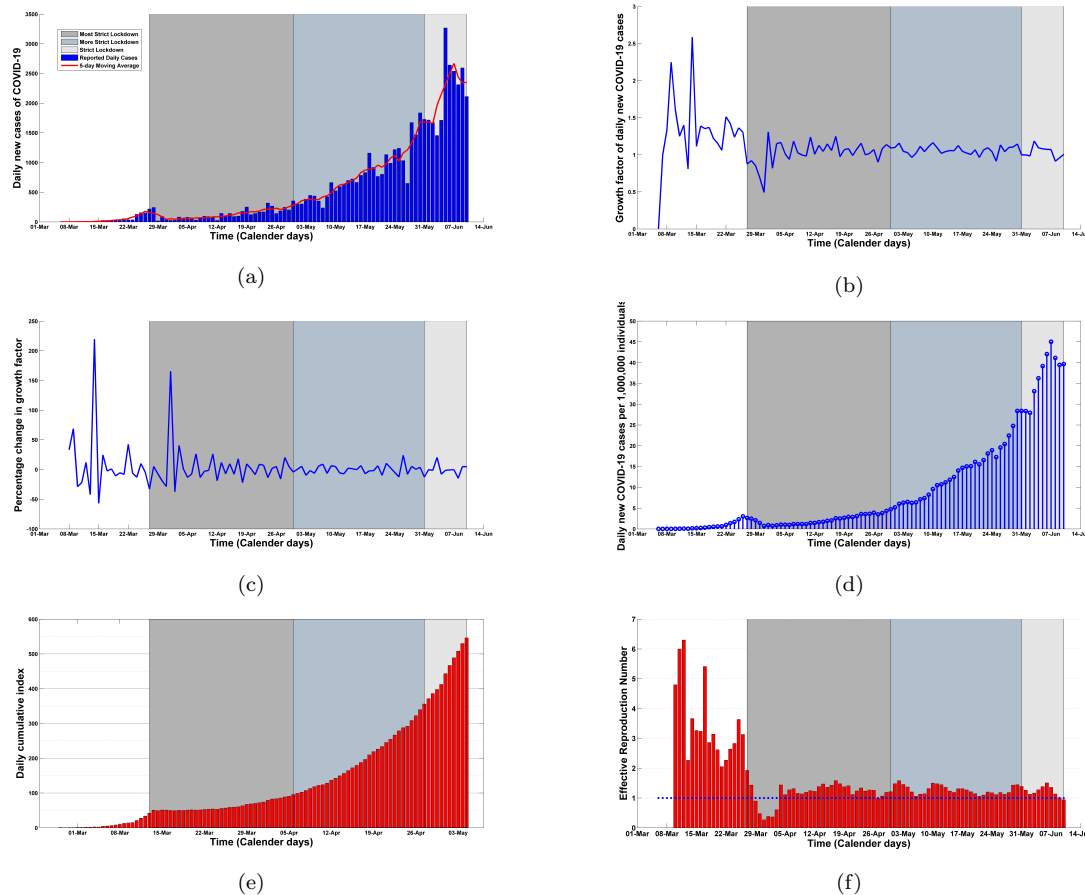


Figure 5: (a) Daily confirmed cases and 5-day moving average of daily cases, (b) growth factor, (c) percentage change in growth factor, (d) daily incidence proportion, (e) daily cumulative index and (f) effective reproduction number considering different lockdown phases in **South Africa** from March 1 to June 10. The intensities of different lockdown phases have been indicated in different colors: before lockdown (1/03/2020–25/03/2020); strictest lockdown (26/03/2020–30/04/2020); stricter lockdown (1/05/2020–31/05/2020); strict lockdown (1/06/2020–10/06/2020).

243 4. Concluding remarks

244 As the panic of the COVID-19 pandemic started unfolding to different parts of
245 the world, developing countries hurriedly launched strict lockdown policies considering
246 lockdown of Wuhan as a perfect model with an aim to quell the outbreak of the novel
247 coronavirus. Unfortunately, such draconian measures could not be implemented suc-
248 cessfully in developing countries compared to China because of unsuccessful isolation
249 of country's capital from other cities and strict confinement measures have also been
250 unsuccessful owing to irresponsible behavior of the citizens in maintaining social dis-
251 tancing guidelines. It is also worth mentioning that the national economies of these
252 developing countries comprehensively rely on their respective capital cities. For this
253 reason, governments were unable to cut off the connectivity between country's capital
254 and other cities. After analyzing various trends of different epidemiological parameters
255 in different lockdown phases, it has been unearthed that the impact of strict country-
256 wide lockdowns for prolonged period is paper-thin in developing countries which might
257 ignite a firestorm of controversy in the research community. Nevertheless, a rigorous
258 real-time data analysis of five developing countries reveals the fact that those imposed
259 lockdowns were not as effective to curb the spread of the virus as those were expected
260 to be. On the other hand, inhabitants of these countries are facing unprecedented
261 crises due to immense disruption of their respective national economies. As prolonged
262 lockdown cannot be a pragmatic solution for developing countries due to its catas-
263 trophic socio-economic consequences, most of the respective governments have been
264 compelled to ease the lockdown measures eventually. Our study suggests that a re-
265 finement of policy-making is indispensable for developing countries to ensure a perfect
266 balance between saving lives and confirming livelihoods.

267 References

- 268 Ahmed, Z., Coronavirus: Economy down, poverty up in Bangladesh, *Deutsche Welle*,
269 June 10, 2020, Available Form: [https://www.dw.com/en/coronavirus-economy-
270 down-poverty-up-in-bangladesh/a-53759686](https://www.dw.com/en/coronavirus-economy-down-poverty-up-in-bangladesh/a-53759686).
- 271 Donaldson, T., Pakistan lockdown idles factories—where orders had shriv-
272 eled up, *Sourcing Journal*, March 26, 2020. Available from: [https:
273 //sourcingjournal.com/topics/sourcing/pakistan-coronavirus-lockdown-
274 garment-factories-closed-synergies-worldwide-levis-202444](https://sourcingjournal.com/topics/sourcing/pakistan-coronavirus-lockdown-garment-factories-closed-synergies-worldwide-levis-202444).
- 275 Du, Z., Xu, X., Wu, Y., Wang, L., Cowling, B. J., & Meyers, L. (2020). Serial Inter-
276 val of COVID-19 among Publicly Reported Confirmed Cases. *Emerging Infectious
277 Diseases*, **26**(6), 1341-1343.
- 278 Ganyani, T., Kremer, C. , Chen, D., Torneri, A., Christel, F., Wallinga, J., Niel, H.
279 (2020). Estimating the generation interval for coronavirus disease (COVID-19) based
280 on symptom onset data, *Euro Surveillance*, **25**(17).
- 281 Gollier, C. (2020). If the objective is herd immunity, on whom should it be
282 built? *EconPol Europe Policy Brief*. Available Form: [https://www.econpol.eu/
283 publications/policy_brief_29](https://www.econpol.eu/publications/policy_brief_29).

- 284 Guilherme, D., Bruno, S., Bruno, B. F., Cleyton, M. S., Graciela, A. (2020). The impact
285 of COVID-19 partial lockdown on the air quality of the city of Rio de Janeiro, Brazil,
286 *Science of The Total Environment*, **729**, 139085.
- 287 ICQI (2020), List of developing countries, International Congress of Qualitative Inquiry
288 (Accessed on June 10, 2020), Available Form: [https://icqi.org/developing-](https://icqi.org/developing-countries-list)
289 [countries-list](https://icqi.org/developing-countries-list).
- 290 Kamruzzaman, M., Bangladesh to partly ease lockdown amid virus concerns, May 28,
291 2020, Available from: [https://www.aa.com.tr/en/asia-pacific/bangladesh-](https://www.aa.com.tr/en/asia-pacific/bangladesh-to-partly-ease-lockdown-amid-virus-concerns/1855714)
292 [to-partly-ease-lockdown-amid-virus-concerns/1855714](https://www.aa.com.tr/en/asia-pacific/bangladesh-to-partly-ease-lockdown-amid-virus-concerns/1855714).
- 293 Kohlberg, E., and Abraham, N. (2020). Demystifying the Math of the Coronavirus.
294 *Harvard Business School Working Paper*, No. 20-112.
- 295 Lai, C., Wang, C., Wang, Y., Hsueh, S., Ko, W., & Hsueh, P. (2020). Global epidemi-
296 ology of coronavirus disease 2019 (COVID-19): disease incidence, daily cumulative
297 index, mortality, and their association with country healthcare resources and eco-
298 nomic status. *International Journal of Antimicrobial Agents*, **55**(4), 105946.
- 299 Lai, C., Wang, C., Wang, Y., & Hsueh, P. (2020). Global coronavirus disease 2019:
300 What has daily cumulative index taught us? *International Journal of Antimicrobial*
301 *Agents*, **55**(6), 106001.
- 302 Lau, H., Khosrawipour, V., Kocbach, P., Mikolajczyk, A., Schubert, J., Bania, J.,
303 Khosrawipour, T. (2020). The positive impact of lockdown in Wuhan on containing
304 the COVID-19 outbreak in China, *Journal of Travel Medicine*, **27**(3).
- 305 Mahmood, M., COVID-19 and the developing world, *The Financial Express*, May 30,
306 2020, Available Form: [https://thefinancialexpress.com.bd/views/reviews/](https://thefinancialexpress.com.bd/views/reviews/covid-19-and-the-developing-world-1590852422)
307 [covid-19-and-the-developing-world-1590852422](https://thefinancialexpress.com.bd/views/reviews/covid-19-and-the-developing-world-1590852422).
- 308 Mello, G., & Gaier, R. V., “Brazil lockdowns, attacked by Bolsonaro, begin to slip”,
309 April 9, 2020, *Reuters*, Available from: [https://www.reuters.com/article/us-](https://www.reuters.com/article/us-health-coronavirus-brazil-lockdown/brazil-lockdowns-attacked-by-bolsonaro-begin-to-slip-idUSKCN21R30B)
310 [health-coronavirus-brazil-lockdown/brazil-lockdowns-attacked-by-](https://www.reuters.com/article/us-health-coronavirus-brazil-lockdown/brazil-lockdowns-attacked-by-bolsonaro-begin-to-slip-idUSKCN21R30B)
311 [bolsonaro-begin-to-slip-idUSKCN21R30B](https://www.reuters.com/article/us-health-coronavirus-brazil-lockdown/brazil-lockdowns-attacked-by-bolsonaro-begin-to-slip-idUSKCN21R30B).
- 312 Meunier, T. A. J. (2020). Full lockdown policies in Western Europe countries have
313 no evident impacts on the COVID-19 epidemic, *MedRxiv*, Available Form: [https:](https://doi.org/10.1101/2020.04.24.20078717)
314 [//doi.org/10.1101/2020.04.24.20078717](https://doi.org/10.1101/2020.04.24.20078717).
- 315 Ministerio de Salud de Chile (Spanish), “Informe Epidemiológico COVID-19” (Ac-
316 cessed on June 10, 2020). Available from: <https://www.minsal.cl>.
- 317 Mithu, A. I., & Ahmed, M. F., “Bangladesh prepares for lockdown”,
318 March 24, 2020, Available from: [https://tbsnews.net/coronavirus-chronicle/](https://tbsnews.net/coronavirus-chronicle/coronavirus-bangladesh/bangladesh-prepares-lockdown-60595)
319 [coronavirus-bangladesh/bangladesh-prepares-lockdown-60595](https://tbsnews.net/coronavirus-chronicle/coronavirus-bangladesh/bangladesh-prepares-lockdown-60595).
- 320 Nabi, K. N. (2020). Forecasting COVID-19 pandemic: A data-driven analysis. *Chaos,*
321 *Solitons & Fractals*. Available from: [https://authors.elsevier.com/tracking/](https://authors.elsevier.com/tracking/article/details.doaid=110046&jid=CHAOS&surname=Khondoker)
322 [article/details.doaid=110046&jid=CHAOS&surname=Khondoker](https://authors.elsevier.com/tracking/article/details.doaid=110046&jid=CHAOS&surname=Khondoker).

- 323 Nishiura, H., Linton, N. M., Akhmetzhanov, A. R. (2020). Serial interval of novel
324 coronavirus (COVID-19) infections. *International Journal of Infectious Diseases*, **93**,
325 284-286.
- 326 Our World in Data (2020), “Coronavirus Source Data”, Available Form: [https://
327 ourworldindata.org/coronavirus-source-data](https://ourworldindata.org/coronavirus-source-data).
- 328 Pakistan lifts lockdown amid jump in coronavirus cases, *Gulf Today*, May 9, 2020.
329 Available from: [https://www.gulftoday.ae/news/2020/05/09/pakistan-lifts-
330 lockdown-amid-jump-in-coronavirus-cases](https://www.gulftoday.ae/news/2020/05/09/pakistan-lifts-lockdown-amid-jump-in-coronavirus-cases).
- 331 Paul, R., Bangladesh confirms its first three cases of coronavirus, *Reuters*,
332 March 8, 2020. Available from: [https://www.reuters.com/article/us-health-
333 coronavirus-bangladesh-idUSKBN20V0FS](https://www.reuters.com/article/us-health-coronavirus-bangladesh-idUSKBN20V0FS).
- 334 Ramaphosa: South Africa coronavirus lockdown to ease from June 1, *Aljazeera*, May 25,
335 2020. Available from: [https://www.aljazeera.com/news/2020/05/ramaphosa-
336 south-africa-coronavirus-lockdown-ease-june-1-200525070634938.html](https://www.aljazeera.com/news/2020/05/ramaphosa-south-africa-coronavirus-lockdown-ease-june-1-200525070634938.html).
- 337 Ramaphosa announces 21 day coronavirus lockdown for South Africa, *Business
338 Tech*, March 23, 2020. Available from: [https://businesstech.co.za/news/
339 government/383927/ramaphosa-announces-21-day-coronavirus-lockdown-
340 for-south-africa](https://businesstech.co.za/news/government/383927/ramaphosa-announces-21-day-coronavirus-lockdown-for-south-africa).
- 341 Rivers, M., & Gallón, N., Mexico and parts of Brazil reopen after lockdown-
342 despite surging coronavirus cases, *CNN* June 3, 2020. Available from: [https://
343 edition.cnn.com/2020/06/02/americas/latin-america-coronavirus-
344 reopening-intl/index.html](https://edition.cnn.com/2020/06/02/americas/latin-america-coronavirus-reopening-intl/index.html).
- 345 Sajid, I. & Latif, A., Pakistan stays under lockdown amid coronavirus
346 outbreak, *Anadolu Agency*, March 24, 2020. Available from: [https://
347 www.aa.com.tr/en/asia-pacific/pakistan-stays-under-lockdown-amid-
348 coronavirus-outbreak/1777394](https://www.aa.com.tr/en/asia-pacific/pakistan-stays-under-lockdown-amid-coronavirus-outbreak/1777394).
- 349 Shahid, A., Two coronavirus cases confirmed in Pakistan, *Pakistan Today*, February 27,
350 2020. Available from: [https://www.pakistantoday.com.pk/2020/02/26/sindh-
351 health-two-coronavirus-cases-confirmed-in-pakistan-confirms-first-
352 coronavirus-case-in-karachi](https://www.pakistantoday.com.pk/2020/02/26/sindh-health-two-coronavirus-cases-confirmed-in-pakistan-confirms-first-coronavirus-case-in-karachi).
- 353 Sherwood, D., Chile announces nationwide nightly curfew, coronavirus
354 cases hit 632, *National post*, March 22, 2020. Available from: [https://
355 nationalpost.com/pmnh/health-pmn/chile-announces-nationwide-nightly-
356 curfew-coronavirus-cases-hit-632](https://nationalpost.com/pmnh/health-pmn/chile-announces-nationwide-nightly-curfew-coronavirus-cases-hit-632).
- 357 South African Ministry of Health, “Health updates on Coronavirus” (Accessed on
358 June 10, 2020). Available from: [https://www.gov.za/speeches/health-updates-
359 coronavirus-10-mar-2020-0000](https://www.gov.za/speeches/health-updates-coronavirus-10-mar-2020-0000).
- 360 South Africa set to move toward easing lockdown restrictions, *Voice of America News*,
361 March 14, 2020. Available from: [https://www.voanews.com/covid-19-pandemic/
362 south-africa-set-move-toward-easing-lockdown-restrictions](https://www.voanews.com/covid-19-pandemic/south-africa-set-move-toward-easing-lockdown-restrictions).

363 Tang, Y., and Wang, S. (2020). Mathematic modeling of COVID-19 in the United
364 States. *emphEmerging Microbes & Infections*, **9**(1), 827-829.

365 Total lockdown for Chile capital after surge in virus cases, *Aljazeera*, May 14, 2020.
366 Available from: [https://www.aljazeera.com/news/2020/05/total-lockdown-
367 chile-capital-surge-virus-cases-200513163148849](https://www.aljazeera.com/news/2020/05/total-lockdown-chile-capital-surge-virus-cases-200513163148849).

368 UN COVID-19 response. Available from: [https://www.un.org/
369 sustainabledevelopment/poverty](https://www.un.org/sustainabledevelopment/poverty).

370 Siciliano, B., Dantas, G., Silva, C. M., Arbilla, G. (2020). Increased ozone levels during
371 the COVID-19 lockdown: Analysis for the city of Rio de Janeiro, Brazil. *emphScience
372 of the Total Environment*, **737**, 139765.