

1 **A meta-analysis on the role of pre-existing chronic disease in the cardiac complications**  
2 **of SARS-CoV-2 infection**

3  
4 Jane E. Sinclair<sup>1</sup>, Yanshan Zhu<sup>1</sup>, Gang Xu<sup>2</sup>, Wei Ma<sup>3,4</sup>, Haiyan Shi<sup>5</sup>, Kun-Long Ma<sup>6</sup>, Chun-Feng Cao<sup>6</sup>, Ling-Xi  
5 Kong<sup>6</sup>, Ke-Qiang Wan<sup>6</sup>, Juan Liao<sup>6</sup>, Hai-Qiang Wang<sup>7</sup>, Matt Arentz<sup>8</sup>, Meredith Redd<sup>12</sup>, Linda A. Gallo<sup>13</sup>, &  
6 Kirsty R. Short<sup>1,14\*</sup>

7 <sup>1</sup> School of Chemistry and Molecular Biosciences, The University of Queensland, Brisbane, Australia  
8 <sup>2</sup> Guangzhou First People's Hospital, Guangzhou, Guangdong, China  
9 <sup>3</sup> Department of Geriatric Medicine, Guangzhou First People's Hospital, Guangzhou, Guangdong, China  
10 <sup>4</sup> School of Medicine, South China University of Technology, Guangzhou, Guangdong, China  
11 <sup>5</sup> Department of Respiratory Medicine, Guangzhou Eighth People's Hospital, Guangzhou, Guangdong, China  
12 <sup>6</sup> Yongchuan Hospital of Chongqing Medical University, Yongchuan, Chongqing, China  
13 <sup>7</sup> Institute of Integrative Medicine, Shaanxi University of Chinese Medicine, Xi'an Shaanxi Province, China  
14 <sup>8</sup> Department of Global Health, University of Washington, Seattle, Washington, U.S.A.  
15 <sup>12</sup> Institute for Molecular Bioscience, The University of Queensland, Brisbane, Australia  
16 <sup>13</sup> School of Biomedical Sciences, The University of Queensland, Brisbane, Australia  
17 <sup>14</sup> School of Public Health, The University of Queensland, Brisbane, Australia  
18 \* **Correspondence:** [k.short@uq.edu.au](mailto:k.short@uq.edu.au); Tel.: +61 7 336 54226

JES: Bachelors  
YZ: Masters  
GX: MD  
WM: MD  
HS: MD

K-LM: MD  
C-FC: MD  
L-XK: MD  
K-QW: MD  
JL: MD

H-QW: MD/PhD  
MA: MD  
MR: PhD  
LAG: PhD  
KRS: PhD

19  
20

21

22

23

24

25

26

27

28

29

30 **SUMMARY**

31 **Background:** Severe acute respiratory syndrome coronavirus 2 (SARS-CoV-2) has been associated with  
32 multiple direct and indirect cardiovascular complications. It is not yet well defined whether the patient groups at  
33 increased risk of SARS-CoV-2 severe respiratory disease experience similarly heightened incidence of  
34 cardiovascular complications. We sought to analyse the role of host co-morbidities (chronic respiratory  
35 illnesses, cardiovascular disease (CVD), hypertension or diabetes mellitus (DM)) in the acute cardiovascular  
36 complications associated with SARS-CoV-2 infection.

37 **Methods:** We retrospectively investigated published and pre-printed, publicly released, de-identified, data  
38 made available between Dec 1, 2019, and October 14, 2020. Information was accessed from PubMed, Embase,  
39 medRxiv and SSRN. 363 full-text articles were reviewed and 283 excluded for lack of original research,  
40 irrelevance to outcome, inappropriate cohort, or describing case reports of <10 patients. Data were extracted  
41 from 25 studies and the remaining 55 contacted to request appropriate data, to which four responded with data  
42 contributions. A final of 29 studies were included. This systematic review was conducted based on Preferred  
43 Reporting Items for Systematic Reviews (PRISMA) and Meta-analyses of Observational Studies in  
44 Epidemiology (MOOSE) statements. Included studies were critically appraised using Newcastle Ottawa Quality  
45 Assessment Scale (NOS). Data were extracted independently by multiple observers. When  $I^2 \leq 50\%$ , a  
46 fixed-effects model was selected, while a random-effects model was employed when  $I^2 > 50\%$ .  
47 Cardiovascular complications were measured as blood levels of cardiac biomarkers above the 99th percentile  
48 upper reference limit, new abnormalities in electrocardiography, and/or new abnormalities in echocardiography.

49 **Results:** Individual analyses of the majority of studies found that the median age was higher by approximately  
50 10 years in patients with cardiovascular complications. Pooled analyses showed the development of SARS-  
51 CoV-2 cardiovascular complications was significantly increased in patients with chronic respiratory illness  
52 (Odds Ratio (OR) 1.67[1.48,1.88]), CVD (OR 3.37[2.57,4.43]), hypertension (OR 2.68[2.11,3.41]), DM (OR  
53 1.60[1.31,1.95]) and male sex (OR 1.31[1.21,1.42]), findings that were mostly conserved during sub-analysis of  
54 studies stratified into four global geographic regions.

55 **Conclusions:** Age, chronic respiratory illness, CVD, hypertension, DM and male sex may represent prognostic  
56 factors for the development of both acute and chronic cardiovascular complications in COVID-19 disease,  
57 highlighting the need for a multidisciplinary approach to chronic disease patient management.

58

59

60

61

## 62 INTRODUCTION

63 Severe acute respiratory syndrome coronavirus 2 (SARS-CoV-2) emerged at the end of 2019 and has since gone  
64 on to cause the ongoing coronavirus disease 2019 (COVID-19) pandemic, infecting >50 million people  
65 worldwide. SARS-CoV-2 causes a broad range of respiratory symptoms, ranging from subclinical disease to  
66 viral pneumonia [1]. However, it is increasingly apparent that SARS-CoV-2 also causes a variety of extra-  
67 respiratory complications [1]. Specifically, SARS-CoV-2 infection has been associated with acute myocardial  
68 injury, myocarditis, arrhythmias, venous thromboembolism and other cardiac complications [2–6]. The  
69 development of these complications is likely enhanced by experimental testing of antimalarial and antiviral  
70 drugs, which have known cardiovascular side effects [4–12]. Although prevalence estimates vary, data from  
71 China suggests that approximately 7% of patients infected with SARS-CoV-2 develop cardiac injury (defined as  
72 elevated high-sensitivity cardiac troponin I or new echocardiographic; electrocardiographic (ECG)  
73 abnormalities) [13]. This prevalence increases to 25% in those hospitalised with COVID-19 [14], and 22% in  
74 patients who required intensive care unit (ICU) admission [13]. However, at present, the role of pre-existing  
75 chronic disease in the cardiac complications of COVID-19 remains to be elucidated.

76

77 Pre-existing chronic respiratory disease, cardiovascular disease (CVD), hypertension and diabetes mellitus  
78 (DM) have each been associated with increased rates of hospitalization, ICU admission, and death from the  
79 respiratory complications of SARS-CoV-2 [13–27]. It is not yet well defined whether these patient groups are  
80 also at an increased risk of SARS-CoV-2 associated cardiac injury. Some small studies have shown that patients  
81 with pre-existing CVD are at a higher risk of myocarditis and/or myocardial infarction (MI) from SARS-CoV-2  
82 [3, 28, 29]. A retrospective, single-centre case series of 187 patients with COVID-19 also found that pre-  
83 existing CVD increased the risk of cardiac injury (as defined by troponin elevation) (54.5% vs 13.2%) and  
84 mortality compared with patients without CVD [3]. Similarly, a meta-analysis of 28 observational studies found  
85 SARS-CoV-2 associated cardiac injury biomarkers to be related to a history of hypertension but not DM [30]. In  
86 contrast, Zhu and colleagues found that individuals with type 2 DM had a greater occurrence of acute heart  
87 injury (7.3% versus 3.0%) than individuals without DM [31].

88 There is a clear need to better understand the role of patient host factors in the extra-respiratory complications of  
89 SARS-CoV-2 infection. Here, we analysed the currently available literature on the role of pre-existing chronic  
90 respiratory illnesses, CVD, hypertension and DM in the prevalence of SARS-CoV-2 associated cardiac injury.

91

92

93

94

95

96

97

98

99

## 100 **METHODS**

101

### 102 *Study selection*

103 We retrospectively investigated published and pre-printed, publicly released and de-identified data made  
104 available between Dec 1, 2019, and October 14, 2020. Information was accessed from four databases (PubMed,  
105 Embase, medRxiv and SSRN) using the following search terms: ("covid-19"[All Fields]) OR ("SARS-CoV-  
106 2"[All Fields]) AND ("cardiac"[All Fields] AND "comorbid\*"[All Fields]). A total of 1076 articles were  
107 retrieved after duplicates were removed (available in either English or Chinese), following which 713 records  
108 were removed after screening by title and abstract. 363 full-text articles were reviewed. Of these, 283 articles  
109 were excluded because i) they did not include original research, ii) they were not relevant to the outcome, iii)  
110 they described an inappropriate patient population and/or iv) they described case reports of <10 patients. Of the  
111 remaining 80 studies that were deemed eligible, due to their containing data on patient pre-existing disease and  
112 cardiac complications as an outcome, 25 contained the required data format and these were extracted. The  
113 authors of the remaining 55 studies were contacted to request appropriate data (as they presented only aggregate  
114 data that did not specify the cross-over between pre-existing chronic disease and outcome), to which four groups  
115 responded with data contributions. Thus, a final of 29 studies were included in the meta-analysis [3,4,29,32-57].  
116 The selection process is shown in Figure 1.

117

### 118 *Data extraction and analysis*

119 Extracted variables were aggregate data of median age, sex, underlying chronic disease (chronic respiratory  
120 illness, CVD, hypertension and DM) and the occurrence of cardiac complications as an outcome. Patients with  
121 co-morbidities were included in all applicable categories. For cases in which the data source reported more than  
122 one type of co-morbid CVD separately (such as prevalence of both chronic heart failure and coronary heart  
123 disease within their cohort), only the group with the largest number of cases was included to avoid patient  
124 double up and overrepresentation of co-morbid CVD. *Analyses for each co-morbidity were performed  
125 independently, with each assuming one effect (the patient group in question) is considered as the main driver  
126 of effects.* Median data for age were analysed individually using a Mann-Whitney U test. R version 4.0.0  
127 software was used to analyse sex distribution as well as pre-existing chronic disease and cardiac outcomes  
128 through meta-analysis. Heterogeneity among studies was assessed by using the Q statistic with  $*P \leq 0.05$   
129 indicating the presence of significant heterogeneity and quantified by using the  $I^2$  statistic. A fixed-effects  
130 model was used as when  $I^2 < 50\%$  and random-effects model when  $I^2 > 50\%$ .

131

### 132 *Definition of cardiac complications*

133 Cardiac complications were defined as one or more of the following: blood levels of cardiac biomarkers  
134 (troponin I or creatine-kinase myocardial band) above the 99<sup>th</sup> percentile upper reference limit [58–60], and/or  
135 abnormalities observed in clinical assessments of the patients' heart function, including ECG [61–65] or  
136 echocardiography [62–66].

137

### 138 *Quality assessment and data synthesis*

139 The included studies were critically appraised using Newcastle Ottawa Quality Assessment Scale (NOS) [67].  
140 High-quality studies were defined as studies fulfilling NOS score of minimum 7. Data were synthesised from 29  
141 different and high-quality studies [3,4,29,32–57]. This systematic review was conducted based on the Preferred  
142 Reporting Items for Systematic Review and Meta-Analysis (PRISMA) [68] and Meta-analysis of Observational  
143 Studies in Epidemiology (MOOSE) [69] statements.

144

145

146

147

148

149

150

151

152

153

154

155

156

157

158

159

160

161

162

163

164

165

166

167

168

169

170

171

172

173

174

175

176 **RESULTS**

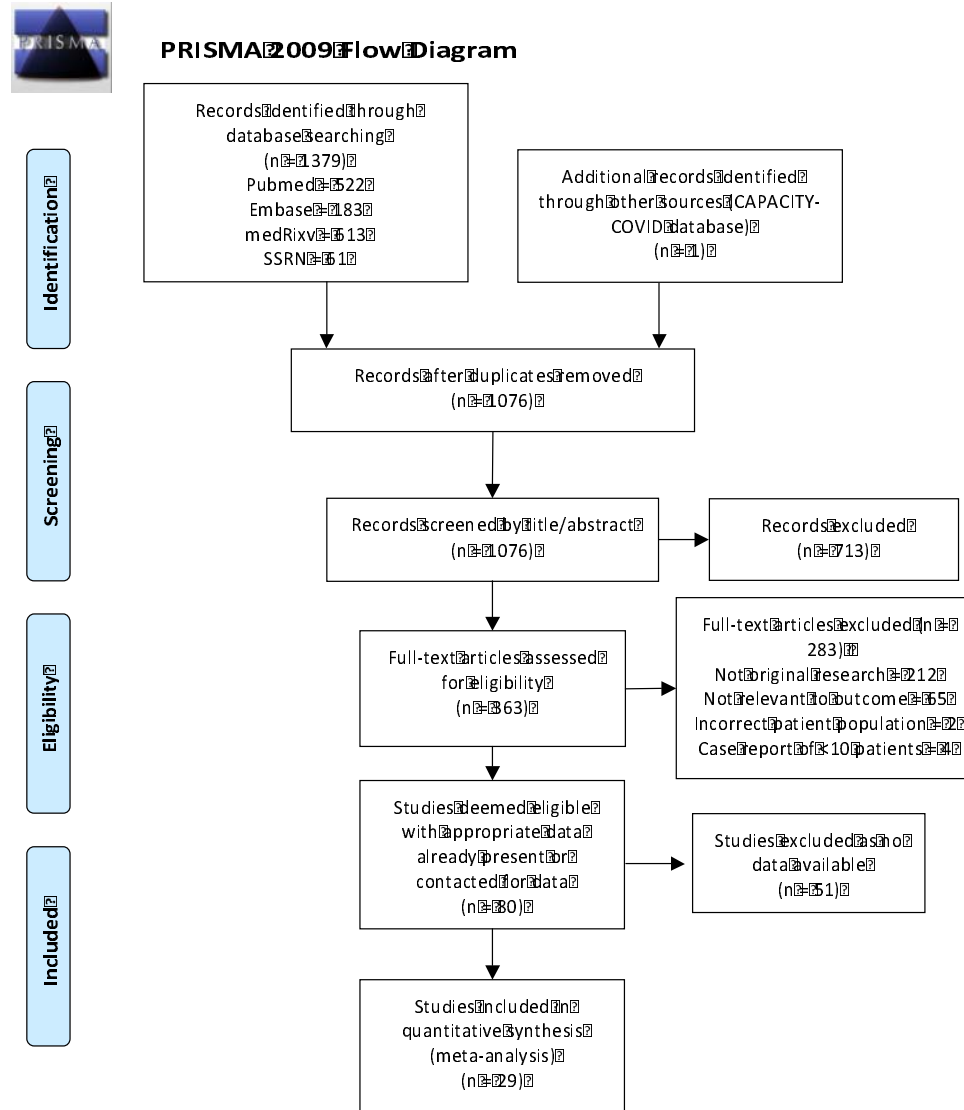
177 *SARS-CoV-2 patients with pre-existing chronic illnesses are at increased risk of acute cardiac complications*

178

179 We identified 1076 articles that described pre-existing chronic disease and cardiac complications of SARS-  
180 CoV-2, rejected 996 articles due to a lack of sufficient and/or appropriate data and derived a total of 80 articles.  
181 29 of these studies were subsequently used in a meta-analysis (Figure 1), all of which were high quality (Table  
182 1). Baseline characteristics of the patient populations as well as other relevant data are listed in Table 2. The  
183 definition of cardiac complications varied between studies, ranging from acute cardiac injury to fulminant  
184 myocarditis. 20 studies measured cardiac outcomes on the day of admission [3,29,32,34,35,37–41,43–48,50-  
185 52,57], and one at the time of patient death [33], with the remaining eight studies not specifying the time of  
186 assessment [4,36,42,49,53–55]. The studies were conducted in 10 countries in four geographical locations  
187 (U.S.A. [32,33,41,48,49], the Middle East [34,50,52], Europe [4,35–40,44,45,47], and the People’s Republic of  
188 China [3,29,42,43,46,51,53–57]) with a total of 3553 COVID-19 patients developing cardiac complications and  
189 13,225 COVID-19 patients without cardiac complications. Patients who presented with SARS-CoV-2 associated  
190 cardiac complications were, on average, 10 years older than in those who did not (Table 2).

191

192



193  
194  
195  
196  
197  
198  
199  
200  
201  
202  
203  
204  
205  
206  
207  
208  
209  
210  
211  
212  
213  
214

**Figure 1.** The Preferred Reporting Items for Systematic Reviews and Meta-analyses (PRISMA) flowchart of study selection.

215

**Table 1.** Quality assessment of the included studies using the Newcastle Ottawa Scale.

Study	Selection	Comparability	Outcome	Total
Abrams et al., 2020 <sup>32</sup>	****	--	***	7
Arentz et al., 2020 <sup>33</sup>	****	--	***	7
Barman et al., 2020 <sup>34</sup>	****	--	***	7
Bertini et al., 2020 <sup>35</sup>	****	--	***	7
CAPACITY COVID, 2020 <sup>36</sup>	****	--	***	7
Duerr et al., 2020 <sup>37</sup>	****	--	***	7
Ferrante et al., 2020 <sup>38</sup>	****	--	***	7
Ghio et al., 2020 <sup>39</sup>	****	--	***	7
Guo et al., 2020 <sup>3</sup>	****	--	***	7
Lairez et al., 2020 <sup>40</sup>	****	--	***	7
Lala et al., 2020 <sup>41</sup>	****	--	***	7
Li et al., 2020 <sup>42</sup>	****	--	***	7
Liu et al., 2020 <sup>43</sup>	****	--	***	7
Lombardi et al., 2020 <sup>44</sup>	****	--	***	7
Lorente-Ros et al., 2020 <sup>45</sup>	****	--	***	7
Ma et al., 2020 <sup>46</sup>	****	--	***	7
Pagnesi et al., 2020 <sup>47</sup>	****	--	***	7
Raad et al., 2020 <sup>48</sup>	****	--	***	7
Sala et al., 2020 <sup>4</sup>	****	--	***	7
Shah et al., 2020 <sup>49</sup>	****	--	***	7
Shahrokh et al., 2020 <sup>50</sup>	****	--	***	7
Shi et al., 2020 <sup>29</sup>	****	--	***	7
Song et al., 2020 <sup>51</sup>	****	--	***	7
Szekely et al., 2020 <sup>52</sup>	****	--	***	7
Toraih et al., 2020 <sup>53</sup>	****	--	***	7
Wei et al., 2020 <sup>54</sup>	****	--	***	7
Xie et al., 2020 <sup>55</sup>	****	--	***	7
Xu G et al., 2020 <sup>56</sup>	****	--	***	7
Xu H et al., 2020 <sup>57</sup>	****	--	***	7

216

217

218

219

220

221

222

223

224

225

226

227

228

229

230

231

232

233



**Table 2.** Summary of baseline characteristics of the included studies.

Study	Population	Sample size (males)		Age (years)			CC description	Assessment	Time of assessment
		CC	No CC	CC	No CC	Findings			
Abrams et al., 2020 <sup>32</sup>	Mortally ill COVID-19 patients hospitalised in 3 New York City hospitals between March 1 and April 3, 2020	11 (9)	122 (74)	64 (58-72)	82 (71.8-89)	$p=0.0009$	Arrhythmic death	Last recorded cardiac rhythm	After death
Arentz et al., 2020 <sup>33</sup>	Critically ill COVID-19 patients admitted to Evergreen Hospital ICU, Washington State	15 (8)	6 (3)	74 (61-82)	69.5 (66-73)	$p=0.3699$	Cardio-myopathy	Radiologic and laboratory findings	Day of ICU admission and again on day 5
Barman et al., 2020 <sup>34</sup>	Consecutive COVID-19 patients hospitalised in three government hospitals in Istanbul, Turkey	150 (86)	457 (248)	68.5±13.4	56.5±15.2	$p<0.001$	Cardiac injury	Laboratory findings only	Day of hospital admission
Bertini et al., 2020 <sup>35</sup>	431 consecutive COVID-19 patients hospitalized in Italy between 10 March and 14 April 2020 who died or were treated with invasive mechanical ventilation.	24 (16)	86 (64)	71 (59-76)	68 (60-78)	$p=0.88$	Hs-TnI > 5x the upper reference limit	Laboratory findings only	Day of hospital admission
CAPACITY COVID, 2020 <sup>36</sup>	COVID-19 patients registered to the international CAPACITY-COVID collaborative consortium with inclusion current from 13 countries	752 (537)	4811 (3019)	71 (64-77)	66 (55-76)	$p<0.001$	Cardiac complication	According to criteria of the European Society of Cardiology	From hospital admission to discharge
Duerr et al., 2020 <sup>37</sup>	COVID-19 patients admitted to the University Hospital Bonn, Germany	9 (4)	10 (5)	NA	NA	NA	Pericardial effusion	Radiologic and laboratory findings	Day of hospital admission
Ferrante et al., 2020 <sup>38</sup>	Consecutive COVID-19 patients undergoing chest CT on admission to Humanitas Research Hospital in Milan, Italy	123 (95)	209 (142)	74.2 (67.8-80.1)	60.7 (51.4-70.5)	$p<0.001$	Myocardial injury	Radiologic and laboratory findings	Day of hospital admission
Ghio et al., 2020 <sup>39</sup>	Consecutive adult COVID-19 patients admitted to the Emergency Department of Fondazione IRCCS Policlinico San Matteo (Pavia, Italy) from February 21st to March 31st 2020	74 (51)	266 (188)	76.1 (69.7-82.5)	68.6 (56.4-76.4)	$p<0.001$	Myocardial injury	Laboratory findings only	Day of hospital admission
Guo et al., 2020 <sup>3</sup>	Consecutive COVID-19 patients admitted to the Seventh Hospital of Wuhan City, China	52 (34)	135 (57)	71.4 (SD=9.43)	53.53 (SD=13.22)	$p<0.001$	Myocardial injury	Laboratory findings only	Day of hospital admission

It is made available under a [CC-BY-NC-ND 4.0 International license](https://creativecommons.org/licenses/by-nc-nd/4.0/).

Lairez et al., 2020 <sup>40</sup>	COVID-19 patients admitted to Rangueil Hospital of Toulouse University for dyspnea or chest pain from April 6, 2020, to May 1, 2020.	13 (11)	18 (16)	66±8	52±13	$p=0.015$	Myocardial injury	Radiologic and laboratory findings	Day of hospital admission
Lala et al., 2020 <sup>41</sup>	COVID-19 patients admitted to five Mount Sinai Health System hospitals in New York City	530 (318)	2206 (1312)	Median=70.59%	Median=60-70%	NA	Myocardial injury	Laboratory findings only	Day of hospital admission
Li et al., 2020 <sup>42</sup>	Critical type COVID-19 patients randomly selected from Renmin Hospital of Wuhan University, China	34 (23)	48 (29)	70.59% >70	37.5% >70	$p=0.003$	Myocardial damage	Laboratory findings only	NA
Liu et al., 2020 <sup>43</sup>	COVID-19 patients from Shenzhen Third People's Hospital in Shenzhen, China	1 (1)	11 (7)	63	62 (36-65)	NA	Fulminant myocarditis, cardiac failure	Radiologic and laboratory findings	Day of hospital admission
Lombardi et al., 2020 <sup>44</sup>	Consecutive COVID-19 patients hospitalized in 13 Italian cardiology units from March 1 to April 9, 2020.	278 (201)	336 (234)	71.3 (12)	64.0 (13.6)	$p<0.001$	Myocardial injury	Laboratory findings only	Day of hospital admission
Lorente-Ros et al., 2020 <sup>45</sup>	Consecutive adult COVID-19 patients admitted to a large tertiary hospital in Madrid, Spain	148 (71)	559 (193)	78.7	63.4	Standardised difference = 114%	Myocardial injury	Laboratory findings only	Day of hospital admission
Ma et al., 2020 <sup>46</sup>	Adult patients hospitalised with COVID-19 in Yongchuan, Chongqing, China	45 (27)	39 (21)	51 (45.5-63.5)	45 (39-53)	$p=0.026$	NA	Radiologic and laboratory findings	Day of hospital admission
Pagnesi et al., 2020 <sup>47</sup>	Hospitalised non-ICU COVID-19 patients from a large tertiary centre in Milan, Italy	29 (20)	171 (111)	65 (55-76)	62 (54-74)	$p=0.813$	Right ventricular dysfunction	Radiologic and laboratory findings	Day of hospital admission
Raad et al., 2020 <sup>48</sup>	COVID-19 patients admitted to Henry Ford Health System in Southeast Michigan, USA, between March 9 and April 15, 2020.	390 (229)	630 (280)	70 (51-89)	59 (39-79)	NA	Cardiac injury	Laboratory findings only	Day of hospital admission
Sala et al., 2020 <sup>4</sup>	Non-ICU COVID-19 patients admitted to seven COVID-19 units at a third-level hub centre in Milan, Italy	12 (NA)	116 (NA)	73±10	64±14	NA	Arrhythmias	Radiologic findings only	NA
Shah et al., 2020 <sup>49</sup>	Covid-19 patients admitted to 3 Phoebe Putney hospitals in Southwest Georgia, USA, between March 2 and June 7, 2020.	116 (62)	193 (70)	68.2±14.1	59.9±14.0	$p<0.001$	Cardiac injury	Laboratory findings only	NA
Shahrokh et al., 2020 <sup>50</sup>	COVID-19 patients presenting to the Sina Hospital emergency department in south Tehran, Iran between March and May 2020.	115 (69)	271 (167)	64.98±15.29	57.12±15.48	$p<0.001$	Cardiac injury	Radiologic and laboratory findings	Day of hospital admission
Shi et al.,	Consecutive severe COVID-19 inpatients of Renmin Hospital,	106	565	73	57	$p<0.001$	Myocardial	Laboratory	Day of hospital

2020 <sup>29</sup>	Wuhan University, China	(58)	(264)	(66-80)	(43-70)		injury	findings only	admission
Song et al., 2020 <sup>51</sup>	Critically ill COVID-19 patients admitted to the ICU at Tongji Hospital, Wuhan, China	34 (24)	30 (18)	67.8±10.3	61.3±13.3	<i>p</i> =0.033	Myocardial injury	Laboratory findings only	Day of hospital admission
Szekely et al., 2020 <sup>52</sup>	Consecutive adult COVID-19 patients admitted to Tel Aviv Medical Center, Israel	68 (46)	32 (17)	69.8±16	65.9±20	<i>p</i> =0.56	Abnormal echocardiogram	Radiologic findings only	Day of admission
Toraih et al., 2020 <sup>53</sup>	COVID-19 patients included in studies exploring pre-existing CVD as COVID-19 risk factors, cardiac injury, ICU admission or mortality	202 (NA)	958 (NA)	NA	NA	NA	Cardiac injury	Laboratory findings only	NA
Wei et al., 2020 <sup>54</sup>	COVID-19 patients admitted to two treatment centres in Sichuan, China	16 (7)	85 (47)	67(61-80.5)	47(33-55)	<i>p</i> <0.001	Acute myocardial injury	Radiologic and laboratory findings	NA
Xie et al., 2020 <sup>55</sup>	Non-critically ill COVID-19 patients admitted to Tongji Hospital, Wuhanm China	102 (46)	517 (251)	68.9±11.7	56.4±13.6	<i>p</i> <0.001	Acute cardiac-related injury	Radiologic and laboratory findings	NA
Xu G et al., 2020 <sup>56</sup>	Adult patients with COVID-19 in Guangzhou, China	12 (6)	253 (116)	62.6±14.5	48.1±15.5	<i>p</i> =0.002	Acute cardiac injury	Radiologic and laboratory findings	NA
Xu H et al., 2020 <sup>57</sup>	COVID-19 patients consecutively hospitalized between January 2 and March 17, 2020, in the Public Health Clinical Center of Chengdu, China.	47 (23)	46 (23)	41 (31-51)	54 (40-65)	<i>p</i> <0.001	Cardiac marker abnormalities	Laboratory findings only	Day of hospital admission

CC: cardiac complications; ICU: intensive care unit; NA: data not available.

235

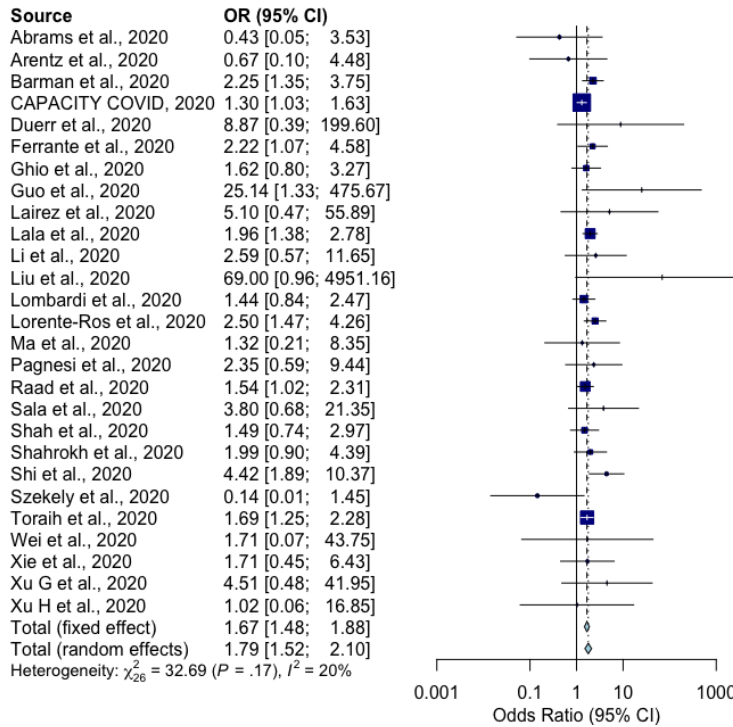
236

237

238

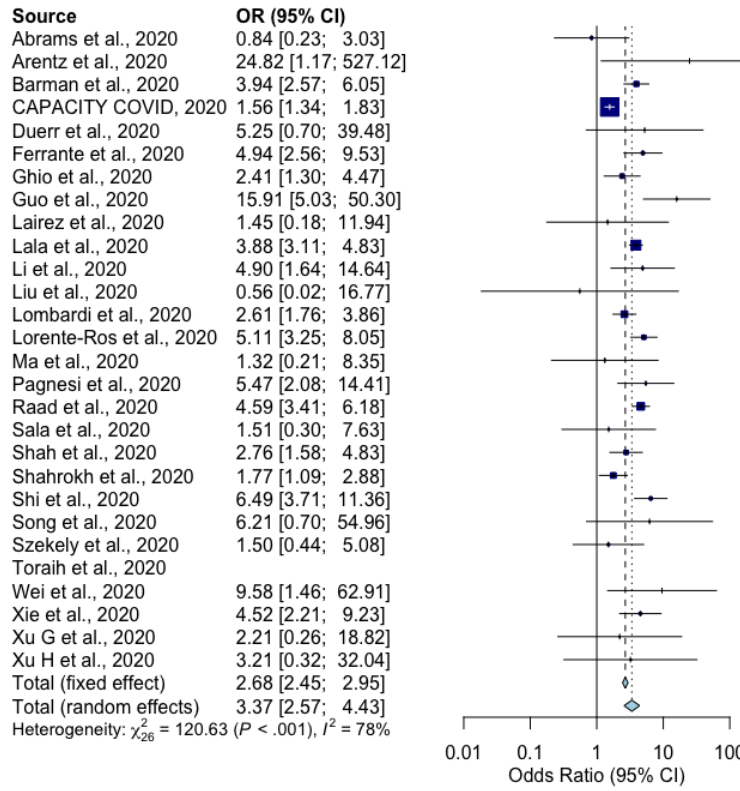
239

240 In a pooled analysis, chronic respiratory illness (odds ratio (OR): 1.67, 95% confidence interval (CI)  
 241 [1.48,1.88]) (Fig. 2), CVD (OR: 3.37, 95% CI [2.57,4.43]) (Fig. 3), hypertension (OR: 2.68, 95% CI  
 242 [2.11,3.41]) (Fig. 4), DM (OR: 1.60, 95% CI [1.31,1.95]) (Fig. 5), and male sex (OR: 1.31, 95% CI [1.21,1.42])  
 243 (Fig. 6), were each associated with a higher incidence of SARS-CoV-2 associated cardiac complications.  
 244



245  
 246  
 247  
 248  
 249  
 250  
 251  
 252  
 253

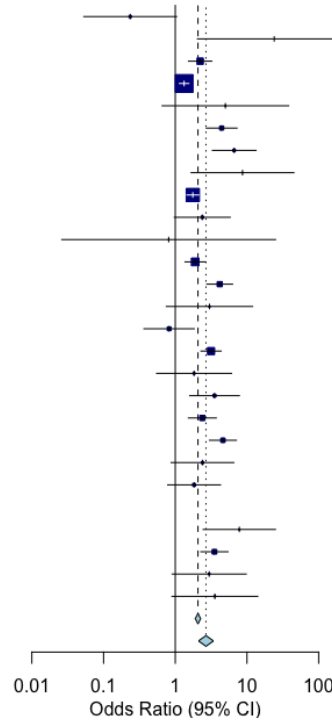
**Figure 2:** Forest plot of chronic respiratory illness as a risk factor for cardiac complications in COVID-19 patients. Fixed effect models apply when  $I^2 < 50\%$ .



254  
255  
256  
257  
258  
259  
260  
261  
262

**Figure 3:** Forest plot of pre-existing cardiovascular disease as a risk factor for cardiac complications in COVID-19 patients. Random effect models apply when  $I^2 > 50\%$ .

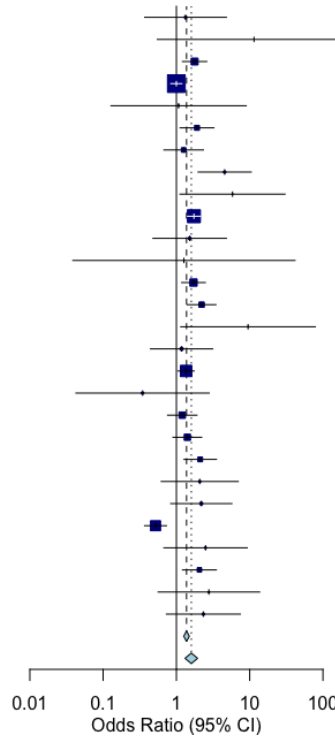
Source	OR (95% CI)
Abrams et al., 2020	0.24 [0.05; 1.05]
Arentz et al., 2020	24.00 [2.04; 282.67]
Barman et al., 2020	2.22 [1.53; 3.24]
CAPACITY COVID, 2020	1.33 [1.14; 1.55]
Duerr et al., 2020	5.00 [0.66; 38.15]
Ferrante et al., 2020	4.43 [2.70; 7.28]
Guo et al., 2020	6.64 [3.29; 13.38]
Lairez et al., 2020	8.67 [1.66; 45.21]
Lala et al., 2020	1.76 [1.45; 2.13]
Li et al., 2020	2.38 [0.97; 5.85]
Liu et al., 2020	0.81 [0.03; 25.10]
Lombardi et al., 2020	1.90 [1.37; 2.63]
Lorente-Ros et al., 2020	4.17 [2.75; 6.31]
Ma et al., 2020	3.00 [0.75; 12.00]
Pagnesi et al., 2020	0.82 [0.37; 1.84]
Raad et al., 2020	3.16 [2.28; 4.37]
Sala et al., 2020	1.83 [0.55; 6.10]
Shah et al., 2020	3.53 [1.59; 7.84]
Shahrokh et al., 2020	2.39 [1.53; 3.73]
Shi et al., 2020	4.62 [3.00; 7.13]
Song et al., 2020	2.40 [0.87; 6.57]
Szekely et al., 2020	1.83 [0.78; 4.28]
Toraih et al., 2020	
Wei et al., 2020	7.82 [2.45; 24.98]
Xie et al., 2020	3.52 [2.27; 5.45]
Xu G et al., 2020	2.97 [0.91; 9.77]
Xu H et al., 2020	3.57 [0.90; 14.15]
Total (fixed effect)	2.07 [1.90; 2.26]
Total (random effects)	2.68 [2.11; 3.41]
Heterogeneity: $\chi^2_{25} = 120.58$ ( $P < .001$ ), $I^2 = 79\%$	



263  
264  
265  
266  
267  
268  
269  
270  
271  
272  
273

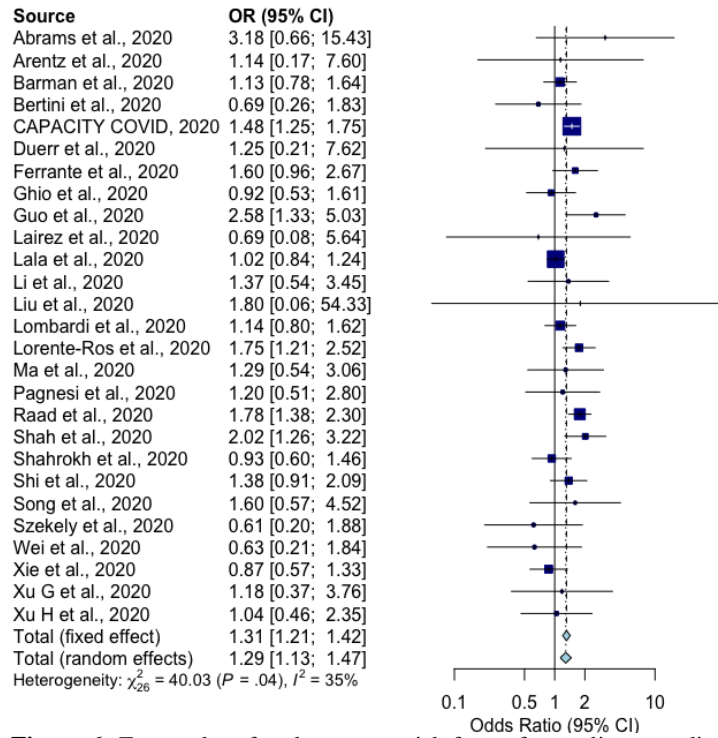
**Figure 4:** Forest plot of hypertension as a risk factor for cardiac complications in COVID-19 patients. Random effect models apply when  $I^2 > 50\%$ .

Source	OR (95% CI)
Abrams et al., 2020	1.33 [0.37; 4.82]
Arentz et al., 2020	11.47 [0.55; 239.66]
Barman et al., 2020	1.77 [1.21; 2.60]
CAPACITY COVID, 2020	1.00 [0.84; 1.19]
Duerr et al., 2020	1.07 [0.13; 8.98]
Ferrante et al., 2020	1.91 [1.12; 3.25]
Ghio et al., 2020	1.26 [0.68; 2.34]
Guo et al., 2020	4.56 [1.98; 10.51]
Lairez et al., 2020	5.83 [1.12; 30.40]
Lala et al., 2020	1.73 [1.42; 2.12]
Li et al., 2020	1.52 [0.48; 4.82]
Liu et al., 2020	1.27 [0.04; 41.56]
Lombardi et al., 2020	1.71 [1.18; 2.48]
Lorente-Ros et al., 2020	2.21 [1.41; 3.47]
Ma et al., 2020	9.50 [1.15; 78.80]
Pagnesi et al., 2020	1.18 [0.44; 3.14]
Raad et al., 2020	1.36 [1.05; 1.75]
Sala et al., 2020	0.35 [0.04; 2.80]
Shah et al., 2020	1.20 [0.76; 1.91]
Shahrokh et al., 2020	1.41 [0.90; 2.22]
Shi et al., 2020	2.11 [1.27; 3.53]
Song et al., 2020	2.08 [0.62; 6.99]
Szekely et al., 2020	2.19 [0.83; 5.73]
Toraih et al., 2020	0.52 [0.37; 0.73]
Wei et al., 2020	2.50 [0.67; 9.26]
Xie et al., 2020	2.06 [1.21; 3.51]
Xu G et al., 2020	2.78 [0.56; 13.70]
Xu H et al., 2020	2.33 [0.73; 7.46]
Total (fixed effect)	1.37 [1.26; 1.50]
Total (random effects)	1.60 [1.31; 1.95]



274  
275  
276  
277  
278  
279  
280  
281  
282  
283  
284

**Figure 5:** Forest plot of diabetes mellitus as a risk factor for cardiac complications in COVID-19 patients. Random effect models apply when  $I^2 > 50\%$ .



285  
286  
287  
288

**Figure 6:** Forest plot of male sex as a risk factor for cardiac complications in COVID-19 patients. Fixed effect models apply when  $I^2 < 50\%$ .

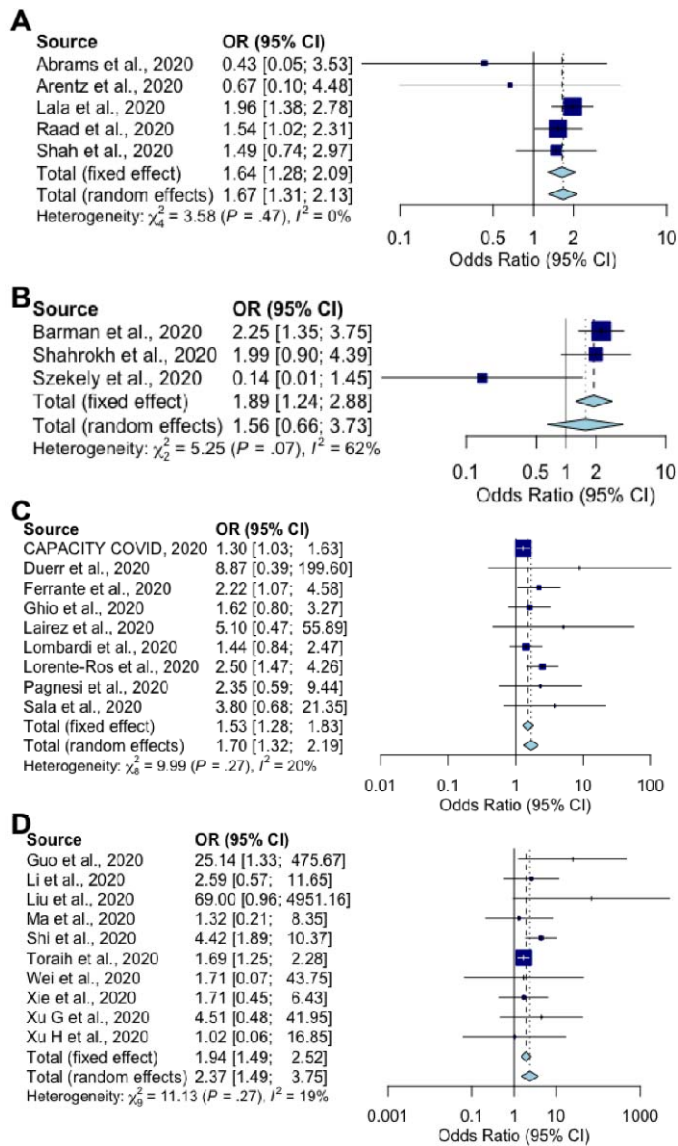
289  
290  
291  
292  
293

As large heterogeneity was detected amongst the total combined study cohort, the cohort was subdivided based on general global region in an attempt to account for this. Cohorts were divided into studies with cohorts primarily situated in the U.S.A [32,33,41,48,49], the Middle East [34,50,52], Europe [4,35–40,44,45,47], and China [3,29,42,43,46,51,53–57].

294  
295  
296  
297  
298  
299

Regionally-pooled sub-analysis of chronic respiratory illness found it to be associated with a higher incidence of SARS-CoV-2 associated cardiac complications in cohorts from the U.S.A. (OR: 1.64, 95% CI [1.28,2.09]) (Fig. 7, A), Europe (OR: 1.53, 95% CI [1.28,1.83]) (Fig. 7, C) and China (OR: 1.94, 95% CI [1.49,2.52]) (Fig. 7, D), but not the Middle East (Fig. 7, B). Regional subdivision accounted for the high heterogeneity amongst all but the Middle Eastern cohort.

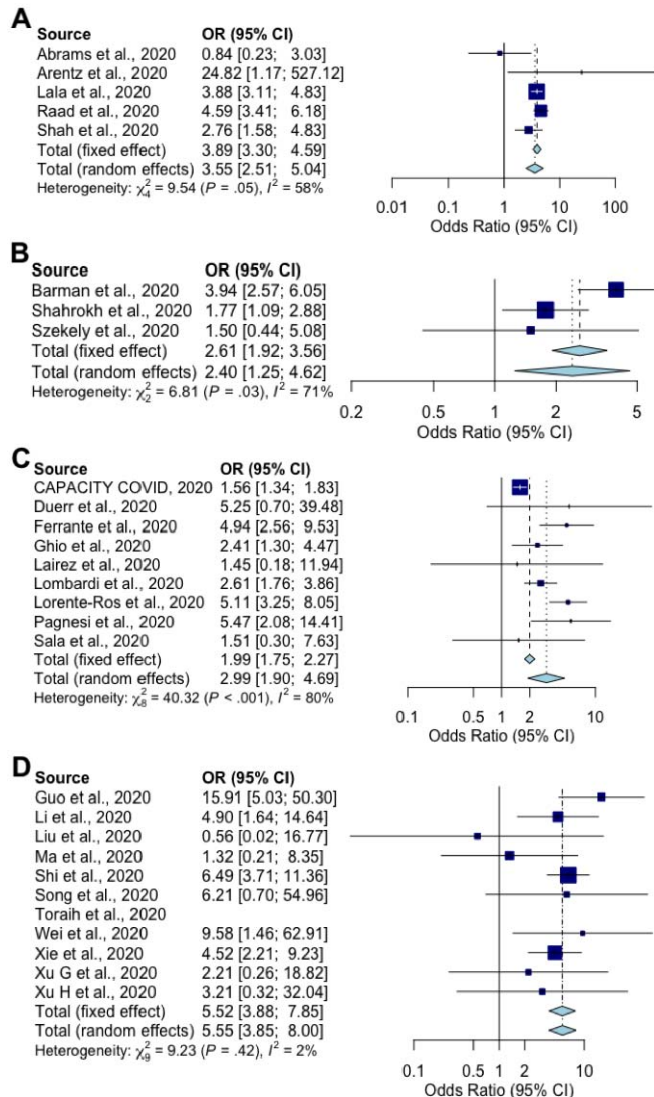




**Figure 7:** Forest plots of chronic respiratory as a risk factor for cardiac complications in COVID-19 patients divided by geographical region. A | Studies based primarily in the United States of America. B | Studies based primarily around the Middle East. C | Studies based primarily in Europe. D | Studies based primarily in China. Fixed effect models apply when  $I^2 < 50\%$  and random effects models apply when  $I^2 > 50\%$ .

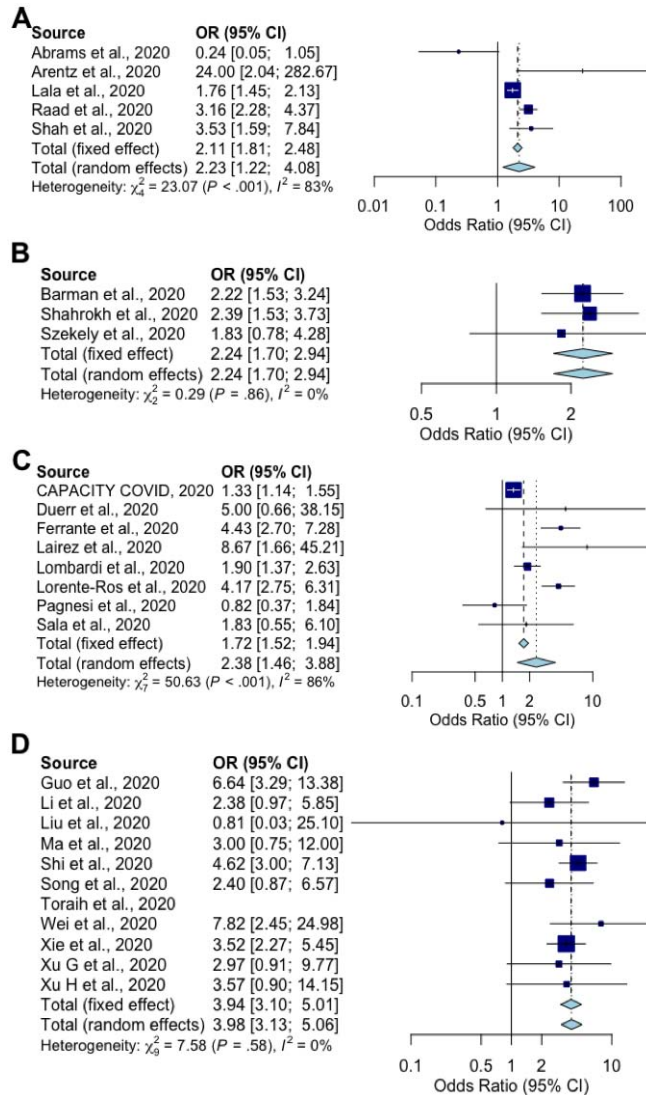
Regionally-pooled sub-analysis of pre-existing CVD found its association with a higher incidence of SARS-CoV-2 associated cardiac complications to be conserved across all cohorts from the U.S.A. (OR: 3.55, 95% CI [2.51,5.04]) (Fig. 8, A), the Middle East (OR: 2.40, 95% CI [1.25,4.62]) (Fig. 8, B), Europe (OR: 2.99, 95% CI [1.90,4.69]) (Fig. 8, C), and China (OR: 5.52, 95% CI [3.88,7.85]) (Fig. 8, D), despite regional subdivision failing to account for high heterogeneity amongst the former three regions.

300  
301  
302  
303  
304  
305  
306  
307  
308  
309  
310  
311



**Figure 8:** Forest plots of pre-existing cardiovascular disease as a risk factor for cardiac complications in COVID-19 patients divided by geographical region. A | Studies based primarily in the United States of America. B | Studies based primarily around the Middle East. C | Studies based primarily in Europe. D | Studies based primarily in China. Fixed effect models apply when  $I^2 < 50\%$  and random effects models apply when  $I^2 > 50\%$ .

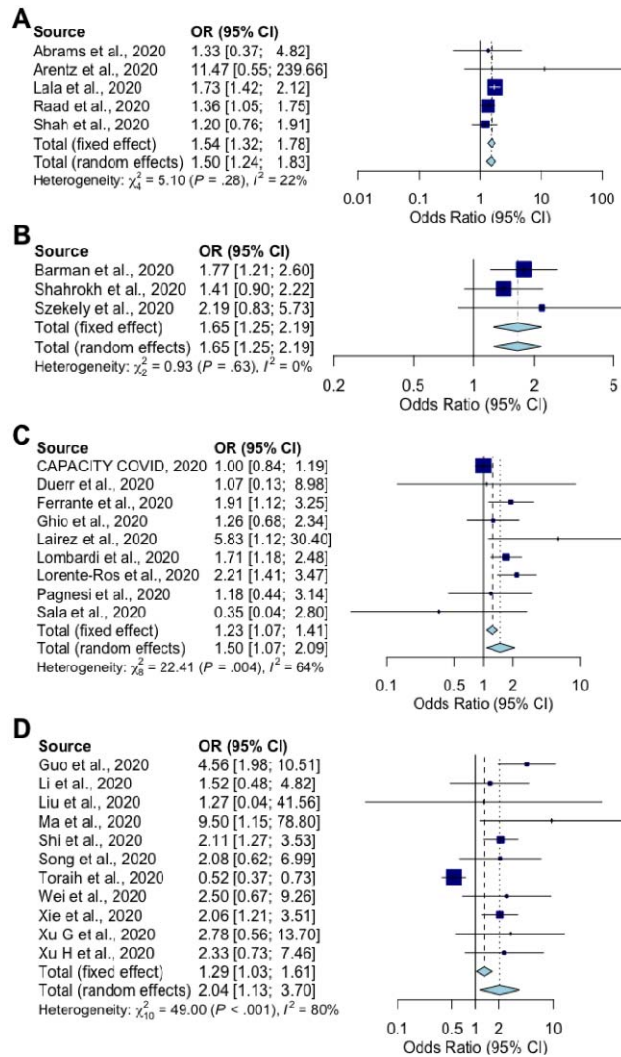
Regionally-pooled sub-analysis of hypertension found its association with a higher incidence of SARS-CoV-2 associated cardiac complications to be similarly conserved across all cohorts from the U.S.A. (OR: 2.23, 95% CI [1.22,4.08]) (Fig. 9, A), the Middle East (OR: 2.24, 95% CI [1.70,2.94]) (Fig. 9, B), Europe (OR: 2.38, 95% CI [1.46,3.88]) (Fig. 9, C), and China (OR: 3.94, 95% CI [3.10,5.01]) (Fig. 9, D), although regional subdivision could not account for high heterogeneity amongst the American and European cohorts.



**Figure 9:** Forest plots of hypertension as a risk factor for cardiac complications in COVID-19 patients divided by geographical region. A | Studies based primarily in the United States of America. B | Studies based primarily around the Middle East. C | Studies based primarily in Europe. D | Studies based primarily in China. Fixed effect models apply when  $I^2 < 50\%$  and random effects models apply when  $I^2 > 50\%$ .

325  
326  
327  
328  
329  
330  
331  
332  
333  
334  
335  
336  
337

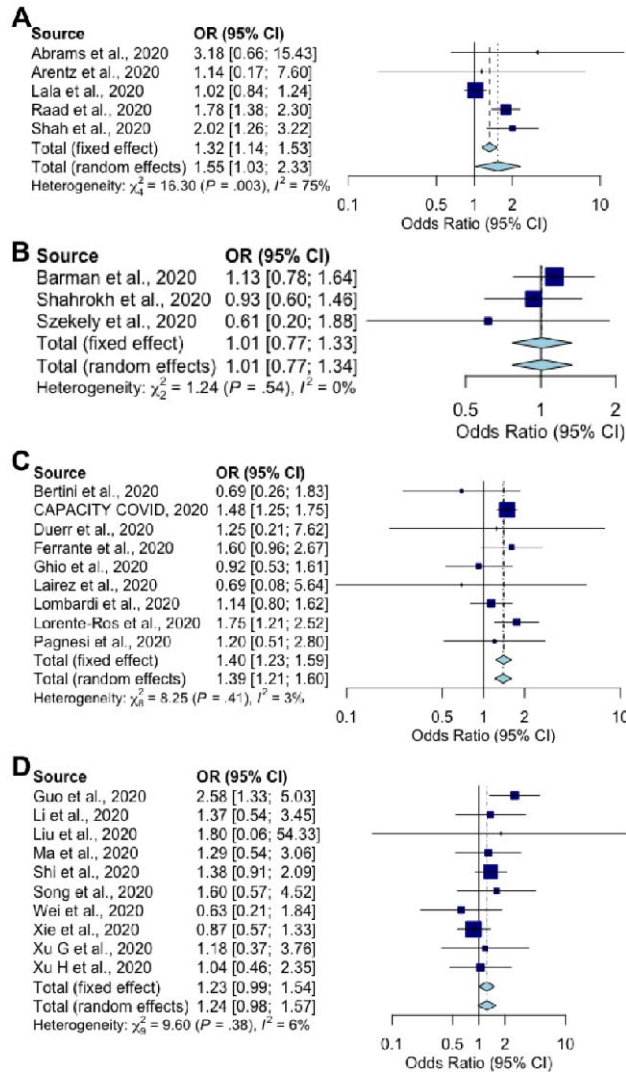
The association between DM and a higher incidence of SARS-CoV-2 associated cardiac complications was also conserved across all cohorts from the U.S.A. (OR: 1.54, 95% CI [1.32,1.78]) (Fig. 10, A), the Middle East (OR: 1.65, 95% CI [1.25,2.19]) (Fig. 10, B), Europe (OR: 1.50, 95% CI [1.07,2.09]) (Fig. 10, C), and China (OR: 2.04, 95% CI [1.13,3.70]) (Fig. 10, D), despite regional subdivision not accounting for high heterogeneity amongst the European and Chinese cohorts.



**Figure 10:** Forest plots of diabetes mellitus as a risk factor for cardiac complications in COVID-19 patients divided by geographical region. A | Studies based primarily in the United States of America. B | Studies based primarily around the Middle East. C | Studies based primarily in Europe. D | Studies based primarily in China. Fixed effect models apply when  $I^2 < 50\%$  and random effects models apply when  $I^2 > 50\%$ .

338  
339  
340  
341  
342  
343  
344  
345  
346  
347  
348  
349

Finally, regionally-pooled sub-analysis of male sex found it to be associated with a higher incidence of SARS-CoV-2 associated cardiac complications in cohorts from the U.S.A. (OR: 1.55, 95% CI [1.03,2.33]) (Fig. 11, A), and Europe (OR: 1.40, 95% CI [1.23,1.59]) (Fig. 11, C), but not the Middle East (Fig. 11, B) or China (Fig. 11, D). Regional subdivision accounted for the high heterogeneity amongst all but the American cohort.



**Figure 11:** Forest plots of male sex as a risk factor for cardiac complications in COVID-19 patients divided by geographical region. A | Studies based primarily in the United States of America. B | Studies based primarily around the Middle East. C | Studies based primarily in Europe. D | Studies based primarily in China. Fixed effect models apply when  $I^2 < 50\%$  and random effects models apply when  $I^2 > 50\%$ .

350  
351  
352  
353  
354  
355  
356  
  
357  
  
358  
  
359  
  
360  
  
361  
  
362  
  
363  
  
364

365 **DISCUSSION**

366

367 Our meta-analysis shows that older age, male sex, and pre-existing chronic respiratory disease, CVD,  
368 hypertension and DM are all risk factors for the development of cardiac complications associated with SARS-  
369 CoV-2 infection. At present the reasons for each of these association are unclear; each is a respiratory risk factor  
370 and thus might cause an indirect cardiac effect, however it could equally be the case that they exert their own  
371 direct catalytic effect on cardiac complications.

372

373 Our analysis identified a significant association between pre-existing CVD and the risk of SARS-CoV-2  
374 associated cardiac complications, which was conserved across global geographical regions. This is consistent  
375 with previous observations that 30% of patients with SARS-CoV-2 cardiac injury had a history of coronary  
376 heart disease [3,29]. The reason for this association remains unclear. These data may be the result of pre-  
377 existing CVD leading to an altered immune response, excessive cytokine release [5], endothelial dysfunction,  
378 increased procoagulant blood activity, rupturing of coronary atherosclerotic plaques [73], and the formation of  
379 an occlusive thrombi [74]. However, further investigations are required to validate this hypothesis.

380

381 The meta-analysis performed herein also found that chronic respiratory illness significantly increased the  
382 incidence of SARS-CoV-2 associated cardiac complications. It is possible that these data reflect the established  
383 indirect association between severe respiratory disease and subsequent acute cardiovascular event. Indeed,  
384 COVID-19 patients with pneumonia and acute respiratory distress syndrome (ARDS) display acute right  
385 ventricular hypertrophy despite an absence of pulmonary embolism or severe pulmonary hypertension [87].  
386 However, chronic lung disease has not been consistently associated with SARS-CoV-2 ARDS and hypoxemia  
387 [88], and thus this is unlikely to be the sole explanation for the increased risk of cardiac complications in  
388 patients with chronic respiratory illness in the present analysis. SARS-CoV-2 associated cardiac complications

389

390 The association between underlying DM and cardiac complications from SARS-CoV-2 may be attributable to a  
391 multitude of other effects induced by abnormal circulating substrates, including hyperglycaemia, and/or the co-  
392 existence and complex interactions with other, even subclinical, conditions in this patient group [91]. In  
393 response to changes in substrate availability, for example, the diabetic heart becomes increasingly dependent on  
394 fatty acids as a fuel source, which decreases work efficiency, and dysregulates responses to hypoxia [92]. These  
395 metabolic changes may predispose individuals with DM to an increased risk of ischemic cardiac injury upon  
396 SARS-CoV-2 infection. The contribution of underlying DM to the risk of SARS-CoV-2 associated cardiac  
397 complications, however, depends largely on the duration of pre-existing disease [93].

398

399

400 There are several limitations in our review. Firstly, the limited number of studies that met the pre-defined  
401 selection criteria disallowed correction for other variables that may confound these results. For example, it is  
402 possible that our observations were confounded by the strong effect that age has on cardiovascular health. Thus,  
403 it is not possible to conclude if people with these pre-existing conditions are just more susceptible to severe  
404 COVID-19 and thus the heart complications associated with this increased severity, or if there is indeed a

405 cardiac-specific effect occurring. Similarly, we cannot exclude the possibility that the associations observed  
406 herein are due, at least in part, to treatments for severe COVID-19 that may damage the heart. Indeed, the  
407 experimental therapeutic hydroxychloroquine has been associated with QT interval prolongation,  
408 cardiomyopathy and heart failure [8–10]. This is likewise the case for treatments for underlying conditions, such  
409 as ACE inhibitors and ARBs which, while not known to damage the heart, may interfere with how the immune  
410 system targets the virus [78]. Information regarding which, if any, therapeutics used in these cohorts of patients  
411 was not consistently available. We anticipate that as more data on the cardiac complications become available it  
412 will be possible for future analyses to correct for these and other confounders; however, it would also be  
413 worthwhile testing the effects of each these pre-existing chronic conditions in one of the recently developed  
414 murine models of SARS-CoV-2.

415

416 Despite the above limitations, these data have important implications for patient care. Patients with one or more  
417 underlying medical conditions should be closely monitored for both severe respiratory and extra-respiratory  
418 COVID-19 complications. Furthermore, the exploratory use of medications that are independently associated  
419 with cardiac complications should be considered with caution in these patient groups and perhaps bypassed in  
420 favour of lower-risk treatment options. There is thus a clear need for a multidisciplinary, collaborative team to  
421 manage the complexity of COVID-19 illness observed in patients with one or more underlying chronic disease.

422

#### 423 **RESOURCE AVAILABILITY**

424

425 **Lead contact:** Further information and requests for resources should be directed to and will be fulfilled by the  
426 Lead Contact, Dr. Kirsty Short ([k.short@uq.edu.au](mailto:k.short@uq.edu.au)).

427

428 **Materials availability:** This study did not generate new unique reagents.

429

430 **Data and code availability:** All data relevant to this study has been included in the manuscript. Data  
431 contributed by Xu et al., 2020<sup>31</sup>, Ma et al., 2020<sup>32</sup>, and Arentz et al., 2020<sup>35</sup>, may be obtained by contacting  
432 authors of each respective study. Data retrieved from remaining studies are published and publicly available. R  
433 version 4.0.0 software was used to analyse sex distribution as well as pre-existing chronic disease and cardiac  
434 outcomes through meta-analysis. The datasets/code supporting the current study have not been deposited in a  
435 public repository but are available from the corresponding author on request.

436

437

438

439

440

441

442

443

444

445 **DECLARATIONS**

446

447 **Acknowledgements:** We want express our gratitude to the CAPACITY-COVID collaborative  
448 consortium for their data contribution:

449 Admiraal de Ruyter Hospital, Goes, the Netherlands: van Kesteren HAM  
450 Albert Schweitzer Hospital, Dordrecht, the Netherlands: van de Watering DJ  
451 Amphia Hospital, Breda, the Netherlands: Schaap J, Alings AMW  
452 Amstelland Hospital, Amstelveen, the Netherlands: Asselbergs-Koning AMH  
453 Amsterdam University Medical Center, Amsterdam, the Netherlands: Pinto Y, Tjong FVY  
454 Antonius Hospital, Sneek, the Netherlands: de Vries JK  
455 Antwerp University Hospital, Antwerp, Belgium: van Craenenbroeck EM, Kwakkel –van Erp HM, van Ierssel S  
456 AZ Maria Middelaars, Gent, Belgium: de Sutter J  
457 Barts Health NHS Trust, London, United Kingdom: Saxena M  
458 Beatrix Hospital, Gorinchem, the Netherlands: Westendorp PHM  
459 Bernhoven Hospital, Uden, the Netherlands: van de Wal RMA  
460 Bravis Hospital, Roosendaal, the Netherlands: Dorman HGR, van Boxem AJM  
461 Catharina Hospital, Eindhoven, the Netherlands: Tio RA  
462 CHU UCL Namur – Site Godinne, Yvoir, Belgium: Gabriel LG  
463 Deventer Hospital, Deventer, the Netherlands: Badings EA  
464 Diakonessenhuis, Utrecht, the Netherlands: van Ofwegen-Hanekamp CEE  
465 Dijklander Hospital, Hoorn, the Netherlands: Wierda E  
466 Dutch Network for Cardiovascular Research (WCN): Schut A  
467 Elizabeth-TweeSteden Hospital, Tilburg, the Netherlands: Monraats PS  
468 E.M.M.S Hospital, Nazareth, Israel: Hellou EH  
469 Erasmus University Medical Center, Rotterdam, the Netherlands: den Uil CA, Jewbali LS  
470 Franciscus Gasthuis, Rotterdam, the Netherlands: Nierop PR  
471 Franciscus Vlietland, Schiedam, the Netherlands: van der Linden MMJM  
472 Gelre Hospitals, Apeldoorn, the Netherlands: Groenemeijer BE  
473 Gelre Hospitals, Zutphen, the Netherlands: Al-Windy NYY  
474 Groene Hart Hospital, Gouda, the Netherlands: van Hessen MWJ  
475 Haaglanden Medical Center, den Haag, the Netherlands: van der Heijden DJ  
476 Hospital do Espirito Santo, Évora, Portugal: Ribeiro MIA  
477 Hospital Group Twente, Almelo, the Netherlands: Linszen GCM  
478 Hospital Prof. Doutor Fernando Fonesca, Amadora, Portugal: Ferreira JB  
479 Imperial College Healthcare NHS Trust, London, United Kingdom: Prasad S  
480 I.M. Sechenov First Moscow State Medical University, Moscow, Russia: Kopylov Ph. Yu., Blagova OV  
481 Ikazia Hospital, Rotterdam, the Netherlands: Emans ME  
482 Incliva Research Institute, University of Valencia, Valencia, Spain: Redón J, Forner MJ  
483 Isala, Zwolle, the Netherlands: Hermanides RS  
484 Jeroen Bosch Hospital, 's-Hertogenbosch, the Netherlands: Haerkens-Arends HE  
485 Jessa Hospital, Hasselt, the Netherlands: Timmermans P Jr, Messiaen P  
486 Julius Center for Health Sciences and Primary Care, University Medical Center Utrecht, The Netherlands: van Smeden M  
487 King Fahd Hospital of the University, Khobar, Saudi Arabia: Al-Ali AK, Al-Muhanna FA, Al-Rubaish AM, Almubarak YA, Alnafie AN,  
488 Alshahrani M, Alshehri A  
489 Langeland Hospital, Zoetermeer, the Netherlands: van der Meer P  
490 Leeds Teaching Hospitals NHS Trust, Leeds, United Kingdom: Kearney M  
491 Leeuwarden Medical Center, Leeuwarden, the Netherlands: van den Brink FS  
492 Leiden University Medical Center, Leiden, the Netherlands: Siebelink HJ  
493 Maastad Hospital, Rotterdam, the Netherlands: Smits PC  
494 Maastricht University Medical Center, Maastricht, the Netherlands: Heymans SRB  
495 Manchester University NHS Foundation Trust, Manchester, United Kingdom: Buch M  
496 Martini Hospital, Groningen, the Netherlands: Tieleman RG, Reidinga AC  
497 Meander Medical Center, Amersfoort, the Netherlands: Mosterd A  
498 Medisch Spectrum Twente, Enschede, the Netherlands: Meijs MFL, Delsing CE, van Veen HPAA  
499 Netherlands Heart Institute, Utrecht, the Netherlands: Hermans-van Ast W, Iperen EPA  
500 Northumbria Healthcare NHS Foundation Trust, Cramlington, United Kingdom: Aujayeb A  
501 One Day Surgery Hospital, Cairo, Egypt: Salah R  
502 Queen Elizabeth University Hospital, Glasgow, United Kingdom: Touyz R  
503 Rijnstate Hospital, Arnhem, the Netherlands: Seelig J  
504 Rode Kruis Hospital, Beverwijk, the Netherlands: Westendorp ICD, Veldhuis LI  
505 Royal Brompton and Harefield NHS Foundation Trust, London, United Kingdom: Prasad S  
506 Royal Devon and Exeter NHS Foundation Trust, Exeter, United Kingdom: Shore AC  
507 Royal Free London NHS Foundation Trust, London, United Kingdom: Captur G  
508 Salford Royal NHS Foundation Trust, Salford, United Kingdom: Dark P  
509 San Luigi Gonzaga University Hospital, Orbassano, Turin, Italy: Montagna LM, Bianco MB, Mazzilli SGM  
510 Saxenburgh Medical Center, Hardenberg, the Netherlands: Kaplan R, Drost JT  
511 Slingeland Hospital, Doetinchem, the Netherlands: Schellings DAAM



512 Southern Health and Social Care Trust, Portadown, United Kingdom: Moriarty A  
513 Spaarne Gasthuis, Haarlem, the Netherlands: Kuijper AFM  
514 SSR Val Rosay, Saint-Didier-au-Mont-d'Or, France: Charlotte NC  
515 St. Antonius Hospital, Nieuwegein, the Netherlands: ten Berg JM  
516 St. Jansdal, Harderwijk, the Netherlands: van der Zee PM  
517 Tehran Heart Center, Tehran, Iran: Shafiee A, Hedayat B, Poorhosseini H, Saneei E  
518 The Newcastle upon Tyne Hospitals NHS Foundation Trust, Newcastle-upon-Tyne, United Kingdom: Zaman A  
519 Treant Zorggroep, Hoogeveen, the Netherlands: Anthonio RL  
520 University College London Hospitals NHS Foundation Trust, London, United Kingdom: Williams B, Patel R, Bell R  
521 University Hospitals Bristol NHS Foundation Trust, Bristol, United Kingdom: Caputo M  
522 University Hospital Brussels, Brussels, Belgium: Weytjens C  
523 University Hospital Complex of Granada, Granada, Spain: Macías-Ruiz R  
524 University Hospital of Geneva, Geneva, Switzerland: Tessitore E  
525 University Hospitals of Leicester NHS Trust, Leicester, United Kingdom: McCann GP  
526 University Medical Center Groningen, Groningen, the Netherlands: van Gilst WH  
527 University Medical Center Utrecht, Utrecht, the Netherlands: Asselbergs FW, van der Harst P, Linschoten M  
528 Van Weel-Bethesda Hospital, Dirksland, the Netherlands: Wu KW  
529 Zaans Medical Center, Zaandam, the Netherlands: Verschure DO  
530 Zuyderland Medical Center, Heerlen, the Netherlands: Kietselaer BLJH  
531

532 **Author contributions:** Idea and study design: KRS, LAG; Data collection and analysis: JES, YZ, GX, WM,  
533 HS, K-LM, C-FC, L-XK, K-QW, JL, MA, KRS; Writing the article: JES, KRS; Draft revision: JES, GX, WM,  
534 HS, K-LM, C-FC, L-XK, K-QW, JL, MA, MR, LAG, KRS; All authors have read the manuscript and have  
535 approved this submission.

536 **Declaration of interests:** The authors declare no conflict of interest. The funders had no role in the design of  
537 the study; in the collection, analyses, or interpretation of data; in the writing of the manuscript, or in the decision  
538 to publish the results.

539 **Funding:** KRS was supported by the Australian Research Council [DE180100512]. Collection of data  
540 contributed by Xu et al. was supported by the Guangzhou Health Research Project, the Guangzhou Health  
541 Committee (NO.20191A010014).

542 **Ethics approval and consent to participate:** The meta-analysis portion of this project was reviewed by the  
543 Human Ethics Research Office, The University of Queensland (CRICOS provider number: 00025B; application  
544 number: 2020001352) and deemed to be exempt from ethics review under the National Statement on Ethical  
545 Conduct in Human Research (National Statement §5.1.22).

## 546 REFERENCES

- 547
- 548 1. Clerkin KJ, Fried JA, Raikhelkar J et al. COVID-19 and cardiovascular disease. *Circulation*.  
549 2020;141:1648-1655. doi:10.1161/CIRCULATIONAHA.120.046941.
  - 550 2. Huang C, Wang Y, Li X et al. Clinical features of patients infected with 2019 novel coronavirus in Wuhan,  
551 China. *Lancet*. 2020;395:497-506. doi:10.1016/S0140-6736(20)30183-5.
  - 552 3. Guo T, Fan Y, Chen M et al. Cardiovascular implications of fatal outcomes of patients with coronavirus  
553 disease 2019 (COVID-19). *JAMA Cardiol*. 2020; doi:10.1001/jamacardio.2020.1017.
  - 554 4. Sala S, Peretto G, Gramegna M et al. Acute myocarditis presenting as a reverse Tako-Tsubo syndrome in a  
555 patient with SARS-CoV-2 respiratory infection. *Eur Heart J*. 2020;41(19):1861-1862.  
556 doi:10.1093/eurheartj/ehaa286.
  - 557 5. Zheng Y, Ma Y, Zhang J, Xie X. COVID-19 and the cardiovascular system. *Nat Rev Cardiol*. 2020;17:259-  
558 260. doi:10.1038/s41569-020-0360-5.
  - 559 6. Inciardi RM, Lip L, Zacccone G et al. Cardiac involvement in a patient with coronavirus disease 2019  
560 (COVID-19). *JAMA Cardiol*. 2020; doi:10.1001/jamacardio.2020.1096.

- 561 7. Edelson DP, Sasson C, Chan PS, et al. Interim guidance for basic and advanced life support in adults,  
562 children, and neonates with suspected or confirmed COVID-19: from the Emergency Cardiovascular Care  
563 Committee and Get With the Guidelines® -Resuscitation Adult and Pediatric Task Forces of the American  
564 Heart Association in collaboration with the American Academy of Pediatrics, American Association for  
565 Respiratory Care, American College of Emergency Physicians, the Society of Critical Care  
566 Anesthesiologists: supporting organisations: American Association of Critical Care Nurses and National  
567 EMS Physicians. *Circulation*. 2020; doi:10.1161/CIRCULATIONAHA.120.047463.
- 568 8. Page RL, 2nd, O'Bryant CL, Cheng D et al. Drugs that may cause or exacerbate heart failure: a scientific  
569 statement from the American Heart Association. *Circulation*. 2016;134(6):e32-69.  
570 doi:10.1161/cir.0000000000000426.
- 571 9. Guzik TJ, Mohiddin SA, Dimarco A et al. COVID-19 and the cardiovascular system: implications for risk  
572 assessment, diagnosis, and treatment options. *Cardiovasc Res*. 2020; doi:10.1093/cvr/cvaa106.
- 573 10. Chatre C, Roubille F, Vernhet H, Jorgensen C, Pers Y-M. Cardiac complications attributed to chloroquine  
574 and hydroxychloroquine: a systematic review of the literature. *Drug Saf*. 2018;41(10):919-931.  
575 doi:10.1007/s40264-018-0689-4.
- 576 11. Castagné B, Viprey M, Martin J, Schott A-M, Cucherat M, Soubrier M. Cardiovascular safety of  
577 tocilizumab: a systematic review and network meta-analysis. *PLoS ONE*. 2019;  
578 doi:10.1371/journal.pone.0220178.
- 579 12. Corrales-Medina VF, Alvarez KN, Weissfeld LA et al. Association between hospitalization for pneumonia  
580 and subsequent risk of cardiovascular disease. *JAMA*. 2015;313(3):264-274. doi:10.1001/jama.2014.18229.
- 581 13. Wang D, Hu B, Hu C et al. Clinical characteristics of 138 hospitalised patients with 2019 novel  
582 coronavirus-infected pneumonia in Wuhan, China. *JAMA*. 2020;323(11):1061-1069.  
583 doi:10.1001/jama.2020.1585.
- 584 14. Giustino G., Croft L.B., Stefanini G.G. Characterization of myocardial injury in patients with COVID-19. *J*  
585 *Am Coll Cardiol*. 2020;76:2043–2055.
- 586 15. Lippi G, Henry BM. Chronic obstructive pulmonary disease is associated with severe coronavirus disease  
587 2019 (COVID-19). *Respir Med*. 2020; doi:10.1016/j.rmed.2020.105941.
- 588 16. Li B, Yang J, Zhao F et al. Prevalence and impact of cardiovascular metabolic diseases on COVID-19 in  
589 China. *Clin Res Cardiol*. 2020;109:521-538. doi:10.1007/s00392-020-01626-9.
- 590 17. Zhou F, Yu T, Du R et al. Clinical course and risk factors for mortality of adult inpatients with COVID-19  
591 in Wuhan, China: a retrospective cohort study. *Lancet*. 2020;395(10229):1054-1062. doi:10.1016/S0140-  
592 6736(20)30566-3.
- 593 18. Yang J, Zheng Y, Gou X et al. Prevalence of comorbidities and its effects in patients infected with SARS-  
594 CoV-2: a systematic review and meta-analysis. *Int J Infect Dis*. 2020;94:91-95.  
595 doi:10.1016/j.ijid.2020.03.017.
- 596 19. Chen N, Zhou M, Dong X et al. Epidemiological and clinical characteristics of 99 cases of 2019 novel  
597 coronavirus pneumonia in Wuhan, China: a descriptive study. *Lancet*. 2020;395(10223):507-513.  
598 doi:10.1016/S0140-6736(20)30211-7.
- 599 20. Epidemiology Working Group for NCIP Epidemic Response, Chinese Center for Disease Control and  
600 Prevention. [The epidemiological characteristics of an outbreak of 2019 novel coronavirus disease  
601 (COVID-19) in China]. *Zhonghua Liu Xing Bing Xue Za Zhi* 2020;41(2):145-151.  
602 doi:10.3760/cma.j.issn.0254-6450.2020.02.003.
- 603 21. Yang X, Yu Y, Xu J et al. Clinical course and outcomes of critically ill patients with SARS-CoV-2  
604 pneumonia in Wuhan, China: a single-centred, retrospective, observational study. *Lancet Respir Med*.  
605 2020;8(5):475-481. doi:10.1016/S2213-2600(20)30079-5.
- 606 22. Wu Z, McGoogan JM. Characteristics of and important lessons from the coronavirus disease 2019  
607 (COVID-19) outbreak in China: summary of a report of 72314 cases from the Chinese Center for Disease  
608 Control and Prevention. *JAMA*. 2020;323(13):1239-1242. doi:10.1001/jama.2020.2648.
- 609 23. Targher G, Mantovani A, Wang X-B et al. Patients with diabetes are at higher risk for severe illness from  
610 COVID-19. *Diabetes Metab*. 2020; doi:10.1016/j.diabet.2020.05.001
- 611 24. Fang L, Karakiulakis G, Roth M. Are patients with hypertension and diabetes mellitus at increased risk for  
612 COVID-19 infection? *Lancet Respir Med*. 2020;8(4):e21. doi:10.1016/S2213-2600(20)30116-8.
- 613 25. Wu C, Chen X, Cai Y et al. Risk factors associated with acute respiratory distress syndrome and death in  
614 patients with coronavirus disease 2019 pneumonia in Wuhan, China. *JAMA Intern Med*. 2020;  
615 doi:10.1001/jamainternmed.2020.0994.
- 616 26. Ruan Q, Yang K, Wang W, Jiang L, Song J. Clinical predictors of mortality due to COVID-19 based on an  
617 analysis of data of 150 patients from Wuhan, China. *Intensive Care Med*. 2020;46:846-848.

- 618 doi:10.1007/s00134-020-05991-x.
- 619 27. Huang I, Lim MA, Pranata R. Diabetes mellitus is associated with increased mortality and severity of  
620 disease in COVID-19 pneumonia – as systematic review, meta-analysis, and meta-regression. *Diabetes*  
621 *Metab Syndr.* 2020;14(4):395-403. doi:10.1016/j.dsx.2020.04.018.
- 622 28. Hui H, Zhang Y, Yang X et al. Clinical and radiographic features of cardiac injury in patients with 2019  
623 novel coronavirus pneumonia. medRxiv. 2020; doi:10.1101/2020.02.24.20027052.
- 624 29. Shi S, Qin M, Cai Y, et al. Characteristics and clinical significance of myocardial injury in patients with  
625 severe coronavirus disease 2019. *Eur Heart J.* 2020; doi:10.1093/eurheartj/ehaa408.
- 626 30. Li J-W, Han T-W, Woodward M et al. The impact of 2019 novel coronavirus on heart injury: a systematic  
627 review and meta-analysis. *Prog Cardiovasc Dis.* 2020; doi:10.1016/j.pcad.2020.04.008.
- 628 31. Xhu L, She Z-G, Cheng X et al. Association of blood glucose control and outcomes in patients with  
629 COVID-19 and pre-existing type 2 diabetes. *Cell Metab.* 2020; doi:10.1016/j.cmet.2020.04.021.
- 630 32. Abrams M., Wan E.Y., Waase M.P., et al. Clinical and cardiac characteristics of COVID-19 mortalities in a  
631 diverse New York City cohort. *J Cardiovasc Electrophysiol.* 2020. doi: 10.1111/jce.14772.
- 632 33. Arentz M, Yim E, Klaff L et al. Characteristics and outcomes of 21 critically ill patients with COVID-19 in  
633 Washington State. *JAMA.* 2020;323(16):1612-1614. doi:10.1001/jama.2020.4326.
- 634 34. Barman HA, Atici A, Sahin I, et al. Prognostic significance of cardiac injury in COVID-19 patients with  
635 and without coronary artery disease. *Coronary Artery Dis.* 2020; doi: 10.1097/MCA.0000000000000914.
- 636 35. Bertini M., Ferrari R., Guardigli G., Malagu M., Vitali F., Zucchetti O., et al. (2020). Electrocardiographic  
637 features of 431 consecutive, critically ill COVID-19 patients: an insight into the mechanisms of cardiac  
638 involvement. *ESC*, doi: 10.1093/europace/euaa258.
- 639 36. Linschoten M., Asselbergs F.W. (2020). CAPACITY-COVID: a European Registry to determine the role of  
640 cardiovascular disease in the COVID-19 pandemic. doi:10.1093/eurheartj/ehaa280. The Netherlands.  
641 Accessed 13 October 2020. <https://capacity-covid.eu/>
- 642 37. Duerr G.D., Heine A., Hamiko M., Zimmer S., Luetkens J.A., Nattermann J., et al. (2020). Parameters  
643 predicting COVID-19-induced myocardial injury and mortality. *Life Sci*, 260, 118400.
- 644 38. Ferrante G., Fazzari F., Cozzi O., Maurina M., Bragato R., D’Orazio F., et al. (2020). Risk factors for  
645 myocardial injury and death in patients with COVID-19: insights from a cohort study with chest computed  
646 tomography. *ESC*, doi: 10.1093/cvr/cvaa193.
- 647 39. Ghio S., Baldi E., Vicentini A., Lenti M.V., Sabatino A.D., Matteo A.D., et al. (2020). Cardiac involvement  
648 at presentation in patients hospitalized with COVID-19 and their outcome in a tertiary referral hospital in  
649 Northern Italy. *Intern Emerg Med*, doi: 10.1007/s11739-020-02493-y.
- 650 40. Lairez O., Blanchard V., Houard V., Vardon-Bounes F., Lemasle M., Cariou E., et al. (2020). Cardiac  
651 imaging phenotype in patients with coronavirus disease 2019 (COVID-19): results of the cocarde study. *Int*  
652 *J Cardiovasc Imag*, doi: 10.1007/s10554-020-02010-4.
- 653 41. Lala A., Johnson K.W., Januzzi J.L., Russak A.J., Paranjpe I., Richter F., et al. (2020). Prevalence and  
654 impact of myocardial injury in patients hospitalized with COVID-19 infection. *J Am College Cardiol*, doi:  
655 10.1016/j.jacc.2020.06.007.
- 656 42. Li L., Zhang S., He B., Chen X., Zhao Q. (2020). Retrospective study of risk factors for myocardial damage  
657 in patients with critical coronavirus disease 2019 in Wuhan. *J Am Heart Assoc*, 10.1161/JAHA.120.016706.
- 658 43. Liu Y, Yang Y, Zhang C et al. Clinical and biochemical indexes from 2019-nCov infected patients linked to  
659 viral loads and lung injury. *Sci China Life Sci.* 2020;63:364-374. doi:10.1007/s11427-020-1643-8.
- 660 44. Lombardi C.M., Carubelli V., Iorio A., Inciardi R.M., Bellasi A., Canale C., et al. (2020). Association of  
661 troponin levels with mortality in Italian patients hospitalized with coronavirus disease 2019: Results of a  
662 multicenter study. *JAMA Cardiol*, doi: 10.1001/jamacardio.2020.3538.
- 663 45. Lorente-Ros A., Ruiz J.M.M., Rincon L.M., Perez R.O., Rivas S., Martinez-Moya R., et al. (2020).  
664 Myocardial injury determination improves risk stratification and predicts mortality in COVID-19 patients.  
665 *Cardiol J*, doi: 10.5603/CJ.a2020.0089.
- 666 46. Ma K-L, Liu Z-H, Cao C-F et al. COVID-19 myocarditis and severity factors: an adult cohort study.  
667 medRxiv. 2020; doi:10.1101/2020.03.19.20034124.
- 668 47. Pagnesi M., Baldetti L., Beneduce A., Calvo F., Gramegna M., Pazzanese V., et al. (2020). Pulmonary  
669 hypertension and right ventricular involvement in hospitalised patients with COVID-19. *Heart*, doi:  
670 10.1136/heartjnl-2020-317355.
- 671 48. Raad M., Dabbagh M., Gorgis S., Yan J., Chehab O., Dagher C., et al. (2020). Cardiac injury patterns and  
672 inpatients outcomes among patients admitted with COVID-19. *Elsevier*, doi:  
673 10.1016/j.amjcard.2020.07.040.
- 674 49. Shah P., Doshi R., Chenna A., Owens R., Cobb A., Ivey H., et al. (2020). Prognostic value of elevated  
675 cardiac troponin I in hospitalized COVID-19 patients. *Elsevier*, 10.1016/j.amjcard.2020.08.041.

- 676 50. Shahrokh K.S., Oraii A., Soleimani A., Hadadi A., Shajari Z., Montazeri M., *et al.* (2020). The association  
677 between cardiac injury and outcomes in hospitalised patients with COVID-19. *Intern Emerg Med*, doi:  
678 10.1007/s11739-020-02466-1.
- 679 51. Song Y., Gao P., Ran T., Qian H., Guo F., Chang L., *et al.* (2020). High inflammatory burden: a potential  
680 cause of myocardial injury in critically ill patients with COVID-19. *Front Cardiovasc Med*, doi:  
681 10.3389/fcvm.2020.00128.
- 682 52. Szekely Y., Lichter Y., Taieb P., Banai A., Hochstadt A., Merdler I., *et al.* (2020). Spectrum of cardiac  
683 manifestatos in COVID-19. *Circulation*, 142, 342–353.
- 684 53. Toraih E.A., Elshazli R.M., Hussein M.H., Elgaml A., Amin M., El-Mowafy M., *et al.* (2020). Association  
685 of cardiac biomarkers and comorbidities with increased mortality, severity, and cardiac injury in COVID-19  
686 patients. *J Med Virol*, doi: 10.1002/jmv.26166.
- 687 54. Wei J-F., Huang F-Y., Xiong T-Y., Liu Q., Chen H., Wang H., *et al.* (2020). Acute myocardial injury is  
688 common in patients with COVID-19 and impairs their prognosis. *Heart*, 106, 1154–1159.
- 689 55. Xie Y., Chen S., Wang X., Li B., Zhang T., He X., *et al.* (2020). Early diagnosis and clinical significance of  
690 acute cardiac injury – Under the iceberg: A retrospective cohort study of 619 non-critically ill hospitalized  
691 COVID-19 pneumonia patients. *medRxiv*, doi: 10.1101/2020.07.06.20147256.
- 692 56. Xu G, Zhao J, Zhang F *et al.* Favorable outcomes of elderly COVID-19 patients in Guangzhou, China: a  
693 retrospective, observational study. Research Square. 2020; doi:10.21203/rs.3.rs-26511/v1.
- 694 57. Xu H., Hou K., Xu R., Li Z., Fu H., Wen L., *et al.* (2020). Clinical characteristics and risk factors of cardiac  
695 involvement in COVID-19. *J Am Heart Assoc*, doi: 10.1161/JAHA.120.016807.
- 696 58. Wang X, Jiang H, Wu P *et al.* Epidemiology of avian influenza A H7N9 virus in human beings across five  
697 epidemics in mainland China, 2013-17: an epidemiological study of laboratory-confirmed case series.  
698 *Lancet Infect Dis*. 2017;17(8):822-832. doi:10.1016/S1473-3099(17)30323-7.
- 699 59. Yu D, Xiang G, Zhu W *et al.* The re-emergence of highly pathogenic avian influenza H7N9 viruses in  
700 humans in mainland China, 2019. *Euro Surveill*. 2019;24(21):1900273. doi:10.2807/1560-  
701 7917.ES.2019.24.21.1900273.
- 702 60. Thygesen K, Alpert JS, Jaffe AS *et al.* Fourth universal definition of myocardial infarction (2018).  
703 *Circulation*. 2018;138(20):e618-651. doi:10.1161/CIR.0000000000000617.
- 704 61. Gao H-N, Ly H-Z, Cao B *et al.* Clinical findings in 111 cases of influenza A (H7N9) virus infection. *N*  
705 *Engl J Med*. 2013;368:2277-2285. doi:10.1056/nejmoa1305584.
- 706 62. Jeyanathan T, Overgaard C, MGeer A. Cardiac complications of influenza infection in 3 adults. *CMAJ*.  
707 2013;185(7):581-584. doi:10.1503/cmaj.110807.
- 708 63. Wang J, Xu H, Yang X *et al.* Cardiac complications associated with the influenza viruses A subtype H7N9  
709 or pandemic H1N1 in critically ill patients under intensive care. *Braz J Infect Dis*. 2017;21(1):12-18.  
710 doi:10.1016/j.bjid.2016.10.005.
- 711 64. Estabragh ZR, Mamas A. The cardiovascular manifestations of influenza: a systematic review. *Int J*  
712 *Cardiol*. 2013;167(6):2397-2403. doi:10.1016/j.ijcard.2013.01.274.
- 713 65. Ito T, Akamatsu K, Ukimura A *et al.* The prevalence and findings of subclinical influenza-associated  
714 cardiac abnormalities among Japanese patients. *Intern Med*. 2018;57(13):1819-1826.  
715 doi:10.2169/internalmedicine.0316-17.
- 716 66. Chacko B, Peter JV, Pichamutha K *et al.* Cardiac manifestations in patients with pandemic (H1N1) 2009  
717 virus infection needing intensive care. *J Crit Care*. 2012;27(1):e1-106. doi:10.1016/j.jccr.2011.05.016.
- 718 67. Wells GA, Shea B, O'Connell D *et al.* 2019. The Newcastle-Ottawa Scale (NOS) for assessing the quality  
719 of nonrandomised studies in meta-analyses.  
720 [http://www.ohri.ca/programs/clinical\\_epidemiology/oxford.asp](http://www.ohri.ca/programs/clinical_epidemiology/oxford.asp). Accessed 27 July 2020.
- 721 68. Moher D, Liberati A, Tetzlaff J, Altman DG, The PRISMA Group. Preferred reporting items for systematic  
722 reviews and meta-analysis: the PRISMA statement. *PLoS Med*. 2009;6(7):e1000097.  
723 doi:10.1371/journal.pmed.1000097.
- 724 69. Stroup AF, Berlin JA, Morton SC *et al.* Meta-analysis of observational studies in epidemiology: a proposal  
725 for reporting. *JAMA*. 2000;283(15):2008-2012. doi:10.1001/jama.283.15.2008.
- 726 70. Nehring SM., Goyal A., Bansal P., Patel B.C. (2020). C Reactive Protein (CRP) [Updated 2020 Jun 5]. In:  
727 *StatPearls* [Internet]. Treasure Island (FL): StatPearls Publishing. Available from:  
728 <https://www.ncbi.nlm.nih.gov/books/NBK441843/>.
- 729 71. Ekelund S, Manfred K. Choosing cut-offs for NT-proBNP. 2011. <https://acutecaretesting.org/-/media/acutecaretesting/files/pdf/choosing-cutoffs-for-ntprobnp.pdf>
- 730 72. Lindsey J.B., Kennedy K.F., Stolker J.M., Gilchrist I.C, Mukherjee D., Marso S.P., *et al.* (2011). Prognostic  
731 implications of Creatine Kinase-MB elevation after percutaneous coronary intervention. *Circ Cardiovasc*  
732 *Interv*, 4, 474-480.
- 733

- 734 73. Madjid M, Vela D, Khalili-Tabrizi H, Casscells SW, Litovsky S. Systemic infections cause exaggerated  
735 local inflammation in atherosclerotic coronary arteries: clues to the triggering effect of acute infections on  
736 acute coronary syndromes. *Tex Heart Inst J.* 2007;34(1):11-18. PMID:17420787.
- 737 74. Corrales-Medina VF, Musher DM, Shachkina S, Chirinos JA. Acute pneumonia and the cardiovascular  
738 system. *Lancet.* 2013;381(9865):496-505. doi:10.1016/S0140-6736(12)61266-5.
- 739 75. Ishiyama Y, Gallagher PE, Averill DB, Tallant EA, Brosnihan KB, Ferrario CM. Upregulation of  
740 angiotensin-converting enzyme 2 after myocardial infarction by blockade of angiotensin II  
741 receptors. *Hypertension.* 2004;43(5):970-976. doi:10.1161/01.HYP.0000124667.34652.1a.
- 742 76. Wang J, He W, Guo L et al. The ACE2-Ang (1-7)-Mas receptor axis attenuates cardiac remodeling and  
743 fibrosis in post-myocardial infarction. *Molec Med Rep.* 2017;16(2):1973-1981.  
744 doi:10.3892/mmr.2017.6848.
- 745 77. Ferrario CM, Jessup J, Chappell MC et al. Effect of angiotensin-converting enzyme inhibition and  
746 angiotensin II receptor blockers on cardiac angiotensin-converting enzyme 2. *Circulation.*  
747 2005;111(20):2605-2610. doi:10.1161/circulationaha.104.510461.
- 748 78. Gheblawia M, Wang K, Viveirosa A et al. Angiotensin converting enzyme 2: SARSCoV-2 receptor and  
749 regulator of the renin-angiotensin system: celebrating the 20th anniversary of the discovery of ACE2. *Circ*  
750 *Res.* 2020; doi:10.1161/CIRCRESAHA.120.317015.
- 751 79. Patel VB, Zhong JC, Grant MB, Oudit GY. Role of the ACE2/Angiotensin 1-7 axis of the renin-angiotensin  
752 system in heart failure. *Circ Res.* 2016;118(8):1313-1326. doi:10.1161/CIRCRESAHA.116.307708.
- 753 80. Marchiano S, Hsiang T-Y, Higashi T, et al. SARS-CoV-2 infects human pluripotent stem cell-derived  
754 cardiomyocytes, impairing electrical and mechanical function. *bioRxiv.* 2020; doi:  
755 10.1101/2020.08.30.274464.
- 756 81. Lindner D, Fitzek A, Brauninger H, et al. Association of cardiac infection with SARS-CoV-2 in confirmed  
757 COVID-19 autopsy cases. *JAMA Cardiol.* 2020; doi: 10.1001/jamacardio.2020.3551.
- 758 82. Han MLK, McLaughlin VV, Criner GJ, Martinez FJ. Pulmonary diseases and the heart. *Circulation.*  
759 2007;116(25):2992-3005. doi:10.1161/CIRCULATIONAHA.106.685206.
- 760 83. Forfia PR, Vaidya A, Wieggers SE. Pulmonary heart disease: the heart-lung interaction and its impact on  
761 patient phenotypes. *Pulm Circ.* 2013;3(1):5-19. doi:10.4103/2045-8932.109910.
- 762 84. Barnes M, Heywood AE, Mahimbo A, Rahman B, Newall AT, Macintyre CR. Acute myocardial infarction  
763 and influenza: a meta-analysis of case-control studies. *Heart.* 2015;101(21):1738-1747.  
764 doi:10.1136/heartjnl-2015-307691.
- 765 85. Carter P, Lagan J, Fortune C et al. Association of cardiovascular disease with respiratory disease. *J Am Coll*  
766 *Cardiol.* 2019;73(17):2166-2177. doi:10.1016/j.jacc.2018.11.063.
- 767 86. Ingebrigsten TS, Marott JL, Vestbo J, Nordestgaard BG, Lange P. Coronary heart disease and heart failure  
768 in asthma, COPD and asthma-COPD overlap. *BMJ Open Resp Res.* 2020;7:e000470. doi:10.1136/bmjresp-  
769 2019-000470.
- 770 87. Martinez-Mateo V, Fernandez-Anguita MJ, Paule A. Electrocardiographic signs of acute right ventricular  
771 hypertrophy in patients with COVID-19 pneumonia: A clinical case series. *Electrocardiology.*  
772 2020;62:100-102.
- 773 88. Halpin DMG, Faner R, Sibila O, Badia JR, Agusti A. Do chronic respiratory diseases or their treatment  
774 affect the risk of SARS-CoV-2 infection? *Lancet.* 2020; doi:10.1016/S2213-2600(20)30167-3.
- 775 89. Bermejo-Martin JF, Martin-Fernandez M, Lopez-Mestanza C, Duque P, Almansa R. Shared features of  
776 endothelial dysfunction between sepsis and its preceding risk factors (aging and chronic disease). *J Clin*  
777 *Med.* 2018;7(11):400. doi:10.3390/jcm7110400.
- 778 90. Chen L, Li X, Chen M, Feng Y, Xiong C. The ACE2 expression in human heart indicated new potential  
779 mechanism of heart injury among patients infected with SARS-CoV-2. *Cardiovasc Res.* 2020;116(6):1097-  
780 1100. doi:10.1093/cvr/cvaa078.
- 781 91. Heather LC, Clarke K. Metabolism, hypoxia, and the diabetic heart. *J Mol Cell Cardiol.* 2011;50(4):598-  
782 605. doi:10.1016/j.yjmcc.2011.01.007.
- 783 92. Iqbal T, Welsby PJ, Howarth FC, Bidasee K, Adeghate E, Singh J. Effects of diabetes-induced  
784 hyperglycaemia in the heart: biochemical and structural alterations. In: Turan B, Dhalla N, editors. *Diabetic*  
785 *Cardiomyopathy: Advances in Biochemistry in Health and Disease*, vol 9. New York: Springer; 2014.  
786 ISBN:9781461493174.
- 787 93. Rask-Madsen C, King GL. Vascular complications of diabetes: mechanisms of injury and protective  
788 factors. *Cell Metab.* 2013;17(1):20-33. doi:10.1016/j.cmet.2012.11.012.