

1 **Impact of mental disorders on active tuberculosis treatment outcomes: a**
2 **systematic review and meta-analysis**

3
4 Ga Eun Lee MScPH^{*1}, James Scuffell MBChB MSc^{*2}, Jerome T. Galea PhD MSW^{3,4},
5 Sanghyuk S. Shin PhD⁵, Elizabeth Magill BA⁶, Ernesto Jaramillo MD PhD⁷, Annika C.
6 Sweetland DrPH MSW⁶

7
8 *These authors contributed equally to the manuscript.

9
10 ¹Department of Epidemiology, Biostatistics, and Occupational Health, McGill University,
11 Montreal, Canada

12 ²King's College London, London

13 ³School of Social Work, College of Behavioral and Community Sciences, University of
14 South Florida, Tampa, Florida

15 ⁴College of Public Health, University of South Florida

16 ⁵Sue & Bill Gross School of Nursing, University of California at Irvine, Irvine, California

17 ⁶Department of Psychiatry, Columbia Vagelos College of Physicians and Surgeons, New
18 York State Psychiatric Institute, New York, New York

19 ⁷Global Tuberculosis Programme, WHO, Geneva, Switzerland

20
21 **Running head:** Mental disorder and tuberculosis outcomes

22
23 **Correspondence to: Dr. James Scuffell, King's College London, London SE1 9RT,**
24 **UK. Electronic address: james.scuffell@kcl.ac.uk**

25
26 **Keywords:** Infectious Disease; Lost to Follow-up; Psychiatry; Treatment Adherence and
27 Compliance; Treatment Failure

28
29
30
31 **Counts:** Abstract 200, Manuscript 2485, References 43, Tables 4, Figures 3

32 **ABSTRACT**

33 *Background:* Comorbid mental disorders in patients with tuberculosis (TB) may
34 exacerbate TB treatment outcomes. We systematically reviewed current evidence on
35 the association between mental disorders and TB outcomes.

36
37 *Methods:* We searched eight databases for studies published from 1990-2018 that
38 compared TB treatment outcomes among patients with and without mental disorders.
39 We excluded studies that did not systematically assess mental disorders and studies
40 limited to substance use. We extracted study and patient characteristics and effect
41 measures and performed a meta-analysis using random-effects models to calculate
42 summary odds ratios (OR) with 95% confidence intervals (CI).

43
44 *Findings:* Of 7,687 studies identified, ten were included in the systematic review and
45 nine in the meta-analysis. Measurement of mental disorders and TB outcomes were
46 heterogeneous across studies. The pooled association between mental disorders and
47 any poor outcome, loss to follow-up, and non-adherence were OR 2.13 (95% CI: 0.85-
48 5.37), 1.90 (0.33-10.91), and 1.60 (0.81-3.02), respectively. High statistical
49 heterogeneity was present.

50
51 *Interpretation:* Our review suggests that mental disorders in TB patients increase the risk
52 of poor TB outcomes, but pooled estimates were imprecise due to small number of
53 eligible studies. Integration of psychological and TB services might improve TB
54 outcomes and progress towards TB elimination.

55 **INTRODUCTION**

56 To eliminate tuberculosis (TB) by 2030, the World Health Organization's End TB
57 Strategy calls for integrated, patient-centered care and prevention.¹ This strategic pillar
58 underscores the management of co-morbidities, including mental disorders, which have
59 been identified in up to 70% of TB patients.² TB and mental disorders share common
60 risk factors including homelessness, substance use, and HIV infection which may affect
61 health-related behaviours and treatment outcomes.²

62
63 A large body of work suggests an association between mental disorders and poor TB
64 treatment outcomes,²⁻⁹ yet many studies were not primarily designed to answer this
65 research question.³⁻⁶ Not all studies assess mental disorders systematically across all
66 participants,^{8,9} making results difficult to interpret.¹⁰ This gap in evidence greatly
67 impedes progress to formulate an evidence-based strategy to address mental health in
68 TB patients.

69
70 The purpose of this study was to systematically review evidence on the impact of mental
71 disorders on TB treatment outcomes. We only included studies that assessed mental
72 disorders systematically for all TB patients. Our primary objective was to determine
73 whether TB patients with concurrent mental disorders have poorer treatment outcomes
74 than patients without mental disorders. We also examined evidence on delayed
75 treatment initiation and medication adherence.

77 **METHODS**

78 This systematic review and meta-analysis was conducted in accordance with PRISMA
79 guidelines and the protocol was registered in the PROSPERO database
80 (CRD42019122382). Ethical approval was not required for this study.

82 *Search strategy*

83 We searched PubMed, Embase Classic, PsycINFO, Global Health, CINAHL, LILACS,
84 Scopus, and Web of Science Core Collection databases for terms related to TB, mental
85 disorder, and TB treatment outcomes. We used both free-text and subject heading

86 (MeSH) terms adapted for use in each database. The MeSH terms search was:
87 “Tuberculosis AND Mental disorders AND (Mortality OR Morbidity OR Death OR
88 Prognosis OR Disease-Free Survival OR Treatment Outcome OR Drug Resistance OR
89 Disease transmission, infectious OR Patient Acceptance of Health Care OR Treatment
90 Failure OR Patient Compliance OR Lost to Follow-Up OR Patient Dropouts OR
91 Treatment Refusal OR Health behavior OR Help-seeking Behavior OR recurrence)”. The
92 full search strategy for PubMed is available in Table 1.

93
94 Database searches were conducted during October 2018. We included articles
95 published between January 1, 1990 - towards the beginning of the Directly Observed
96 Therapy, Short Course (DOTS) strategy - and October 29, 2018. At full-text screening,
97 we reviewed articles published in languages familiar to the co-authors (English, French,
98 Spanish, Portuguese, Korean). We also screened relevant citations in included articles
99 and searched for subsequent publication of study protocols.

100

101 *Eligibility criteria*

102 *Study type and participants*

103 Study types included cross-sectional, case-control, and retrospective and prospective
104 cohort studies, as well as randomized controlled trials. We excluded qualitative studies,
105 case reports and series, theses, literature reviews, meta-analyses, commentaries,
106 editorials, conference abstracts, and latent TB studies. Studies included patients
107 initiating or undergoing treatment for active TB in any setting, with or without multidrug-
108 resistance (MDR).

109

110 *Exposures and outcomes of interest*

111 We defined mental disorders as mood disorders including depression, anxiety disorders,
112 post-traumatic stress disorder and psychotic disorders. The comparison group was no
113 mental disorders. We only included studies that assessed mental disorders in all TB
114 patients based on the Diagnostic and Statistical Manual of Mental Disorders (DSM),
115 International Classification of Diseases (ICD), or using a validated psychiatric screening
116 instrument. We excluded substance use disorders.

117

118 Our primary outcome of interest was TB treatment outcomes as defined by the World
119 Health Organization (WHO): successful (cured, treatment completion) and poor (default
120 or loss to follow-up, failure, death).¹¹ Secondary outcomes were diagnostic delay,
121 defined by time from symptom onset to TB diagnosis or treatment initiation; and
122 medication non-adherence measured by self-report, missed visits, pill count, or
123 physiological tests.

124

125 *Data analysis*

126 Records found in database searching were uploaded and de-duplicated in EndNote
127 using the Bramer method.¹² In duplicate, two reviewers (GL, JS) independently
128 screened abstracts and reviewed the full texts of relevant studies for inclusion. We used
129 Rayyan for screening.¹³

130

131 Data from all studies were extracted independently and duplicated by three authors (GL,
132 JS, EM) using a form based on the Cochrane Data Extraction and Assessment
133 template. Data included study characteristics (year, country, study design, sample size)
134 and patient characteristics (type of TB patient, mental health assessment and
135 prevalence, treatment for mental disorder, TB treatment outcomes). Adjusted and
136 unadjusted effect measures (odds, risk, prevalence and hazard ratios) were extracted or
137 calculated for the association between mental disorders and each outcome.

138

139 Quality of each study was assessed independently and duplicated among five assessors
140 (GL, JS, EM, JG, AS) using the Risk Of Bias In Non-Randomized Studies of
141 Interventions tool (ROBINS-I).¹⁴ Based on the literature, we specified age, sex, and
142 socioeconomic status as key *a priori* confounders. If studies adjusted for all three
143 confounders, the best bias judgement attributed for the confounding domain was
144 moderate, according to the ROBINS-I tool.¹⁴ Disagreements arising in the data
145 extraction and quality assessment process were resolved by consensus.

146

147 *Statistical analysis*

148 We calculated odds ratios (OR) and 95% confidence intervals (CI) for the association
149 between mental disorders and treatment outcomes. When direct calculation was not
150 possible, we calculated ORs from risk, hazard and prevalence ratios.^{15,16} Poor outcomes
151 were considered the inverse of successful outcomes. We estimated pooled odds ratios
152 based on the following TB treatment outcomes: any poor outcome (combinations of
153 failure, loss to follow-up, or death), loss to follow-up, and “non-adherence”, which
154 included all definitions of non-adherence across studies. Random-effects models were
155 used, given the clinical heterogeneity of study populations and mental disorders
156 assessed across studies. Heterogeneity was measured using I^2 statistics.¹⁷ Analysis
157 was done in R (Vienna, Austria).

158

159 **RESULTS**

160 We considered 5,086 studies for inclusion in the review (Figure 1). Abstract screening
161 eliminated 4,931 articles, leaving 155 for full-text screening. An additional 41 articles
162 were screened from citations within included studies. The most common reasons for
163 exclusion were: lack of relevant exposure or outcome (46.2%), outcome not stratified by
164 exposure (28.5%), or mental illness not systematically assessed (7.0%). In total, ten
165 studies met our inclusion criteria, and nine were included in meta-analysis (Figure 1).
166 We found no studies on TB treatment delay.

167

168 *Characteristics of included studies*

169 The ten included studies reported data on patients beginning TB treatment between
170 1999 and 2016 (Table 2). They were conducted in sub-Saharan Africa (South Africa,
171 Ethiopia, Zimbabwe, Zambia, and Tanzania) (n=6),^{18–23} Peru (n=3);^{24–26} and China
172 (n=1).²⁷ Six studies were cohort studies,^{18,19,23–26} three were cross-sectional
173 studies,^{21,22,27} and one was a case-control study.²⁰ The total sample size was 12,868
174 (range: 49-4,900). Two studies included MDR-TB patients only.^{25,26}

175

176 Mental disorder was measured at baseline either by psychiatric assessment^{20,25,26} or
177 self-reported screening tools.^{18,19,21–24,27} (Table 2) The prevalence of mental disorders
178 among TB patients ranged from 18.9%²⁶ to 67.6%.¹⁹ Four studies measured

179 depression,^{18,20,24,27} three psychological distress,^{19,22,23} and one post-traumatic stress
180 disorder.²¹ Two studies reported mental disorder as a composite variable.^{25,26} Only two
181 studies indicated that mental health support was provided to patients outside of usual
182 care.^{24,26}

183
184 *Primary outcomes*
185 *Association between mental disorders and poor TB treatment outcomes*
186 Four studies estimated the association between mental disorders and poor TB treatment
187 outcomes as a composite measure combining some or all of: treatment failure, loss to
188 follow-up, death (Table 3, Figure 2).^{18,19,24,25} Overall, mental disorders were associated
189 with increased odds of poor TB treatment outcomes (pooled OR 2.13, 95% CI 0.85-5.37,
190 Figure 2). Heterogeneity was high across studies (I^2 82%).

191
192 *Association between mental disorders and TB treatment loss to follow-up*
193 Two studies focused on the association between mental disorders and loss to follow-up,
194 but used different definitions (Table 3, Figure 2).^{18,26} One study defined loss to follow-up
195 as a patient on treatment for at least four weeks and whose treatment was interrupted
196 for eight or more consecutive weeks.¹⁸ The other study was defined loss to follow-up as
197 any patient missing 30 or more consecutive days of treatment.²⁶ In the meta-analysis
198 (Figure 2), mental disorder was associated with nearly double the odds of loss to follow-
199 up compared with no mental disorder (pooled OR 1.90, 95% CI 0.33-10.91). There was
200 high heterogeneity (I^2 78%).

201
202 *Association between mental disorders and death*
203 Two studies reported an association between mental disorders and death (Table 3).^{18,23}
204 In one study, depression was associated with 2.99 times the risk of death (95% CI 1.54-
205 5.78).¹⁸ Another study revealed that for each point increase of psychological distress
206 score, odds of death increased by 6% (95% CI 4-8%).²³ Meta-analysis was not
207 conducted for this outcome.

208
209 *Secondary outcomes*

210 *Association between mental disorders and non-adherence to TB treatment*

211 TB treatment non-adherence was examined in five studies, but definitions varied (Table
212 3, Figure 3). Three studies used self-reported non-adherence,^{21,22,27} one used
213 “discontinuation of treatment beyond the intensive phase of therapy,”²⁰ and the fifth
214 defined it as “missing a scheduled DOTS visit”.²³ One study had insufficient information
215 to calculate an effect estimate and was excluded from the meta-analysis.²⁰ Summarizing
216 the effect estimates, there was a trend towards increased odds of non-adherence (OR
217 1.60, 95% CI 0.84-3.02), with high statistical heterogeneity (I^2 86%) (Figure 3).

218

219 *Risk of bias assessment*

220 All included studies were observational studies, putting them at risk of bias according to
221 ROBINS-I (Table 4). Half of the studies showed moderate risk of bias related to
222 confounders by adjusting results for age, sex and socioeconomic status,^{18,22-24,27} while
223 the other half displayed serious risk of bias by not accounting for these confounders.¹⁹⁻
224 ^{21,25,26} Five studies had low risk of bias in selection of participants,^{18,23-26} but the other
225 five studies were at serious risk of bias with study inclusion being related to mental
226 health status and TB treatment outcome.^{19-22,27} The most serious methodological
227 concern was risk of classification of exposure. Six studies were at serious risk of bias for
228 this domain, either because mental health was determined at the same time as the
229 outcome or because the definition of mental disorder was not clear.^{19-23,27} The other four
230 studies had low risk of bias because they used locally validated tools or psychiatric
231 interviews.^{18,24-26} Two studies reported the provision of psychiatric treatment outside of
232 usual care and were classified as serious risk of bias for deviations from intended
233 exposure.^{24,26} The other studies were either at low risk of bias or had insufficient
234 information.^{18-23,25,27} For missing data one study was at serious risk of bias,²⁰ seven
235 were at low risk of bias,^{18,19,22,23,25-27} and two had no information.^{21,24} Four studies used
236 self-reported measures and were classified as serious risk of bias due to measurement
237 of outcomes.^{20-22,27} All except one study²² presented a low risk of bias in selection of
238 reported results.

239

240 **DISCUSSION**

241 Our systematic review and meta-analysis found TB patients with mental disorders may
242 have double the risk of loss to follow-up and three times the risk of death compared with
243 patients without mental disorders. Mental disorders were also associated with twice the
244 risk of treatment non-adherence. Still, few studies met criteria for inclusion, resulting in
245 decreased precision of effect estimates, and most included studies had serious risk of
246 bias.

247
248 These results are similar to but weaker than associations reported in another recent
249 systematic review focused only on depression.²⁸ This difference may be partially due to
250 variations in outcome definitions and statistical approaches between studies. The strong
251 link between mental disorders and non-adherence to TB treatment is consistent with
252 studies examining medication adherence in patients with mental disorders comorbid with
253 HIV and non-communicable diseases.^{29–31}

254
255 We found highly heterogeneous definitions of mental disorders across studies. Of the
256 ten included studies, only three captured mental disorders using ICD or DSM
257 criteria.^{20,25,26} The remaining seven used screening tools with various cut-off
258 scores.^{18,19,21–24,27} Given the overlap between some symptoms of TB and mental
259 disorders (e.g. disturbances in appetite, energy, and sleep), screening tools may not be
260 as effective at distinguishing etiology.³² Although half of the studies using screening
261 tools described validation in local populations, none described specific validation among
262 TB patients. This validation is imperative to better evaluate mental health in this
263 population.³³

264
265 There was also variation in definitions of TB outcomes. The WHO defines loss to follow-
266 up as “a TB patient who did not start treatment or whose treatment was interrupted for 2
267 consecutive months or more.”¹¹ However, only one study used this definition;¹⁹ the other
268 defined loss to follow-up as one month of treatment interruption.²⁶ The five studies
269 evaluating TB treatment adherence^{20–23,27} had even more disparate definitions: yes or
270 no,²⁰ taking less than 90% of medication,^{21,22} missing a scheduled DOTS visit,²³ and a

271 score qualifying low, medium, or high adherence.²⁷ Variations in outcome definitions
272 may partially explain differences in magnitude and precision of these results.

273
274 All included studies except one¹⁸ had serious risk of bias using the ROBINS-I tool,¹⁸
275 which limits the interpretation of current evidence. Half of the included studies did not
276 adjust for important confounders of age, sex, and socioeconomic status,³² and we could
277 not account for these in meta-analysis. Residual confounding is likely present since
278 none of the studies measured and adjusted for malnutrition, substance, alcohol or
279 tobacco use.^{34–37} There are also likely variations in quality and expectations of TB care
280 between studies.

281
282 Only one study specifically described mental health intervention provided.²⁶ MDR-TB
283 patients in Peru received group therapy and psychiatric medications to facilitate
284 adherence, which may explain why the association between mental disorders and loss
285 to follow-up was not significant in the study.²⁶ Interventions that aim to directly support
286 TB patients (e.g. psychological therapies and anti-depressant treatment) have been
287 shown to be acceptable^{38,39} and improve TB outcomes.⁴⁰ Individual psychotherapy,
288 peer-led “TB clubs”, and psychotropic medications have been shown to improve
289 adherence to TB treatment and TB.^{10,41} Patient-centered approaches like these either
290 address mental health directly or address TB-related stigma, but are not widely adopted.

291
292 *Strengths and limitations of study*

293 Our meta-analysis was limited by the small number of studies that met inclusion criteria.
294 For example, 13 studies from retrospective chart review or registry data were excluded
295 because it was unclear if mental disorders were assessed for all patients. To mitigate
296 the small number of studies, we combined all types of mental disorders and both TB and
297 MDR-TB together in the meta-analyses, resulting in high levels of heterogeneity and
298 wide confidence intervals in our pooled estimates. For example, compared to drug-
299 sensitive TB, psychosocial stressors associated with MDR-TB are significantly more
300 complicated;^{33,42} treatment regimens often include medicines with psychiatric side
301 effects, and treatment duration is much longer.⁴³ As a result, we were unable to form

302 conclusions for specific mental disorders, although different mental disorders may have
303 different impacts on TB outcomes.

304

305 **CONCLUSIONS**

306 This review emphasizes the scarcity of studies that methodically evaluate the impact of
307 mental disorders on TB treatment outcomes. A strong evidence base is essential to
308 close the treatment gap in mental health care and accelerate progress towards
309 achieving the targets of the WHO's End-TB Strategy. Future studies should
310 systematically assess mental disorders in TB patients using locally validated screening
311 tools or psychiatric evaluations, use standard outcome definitions, and measure and
312 control for confounders. Improving the quality of future studies will showcase the
313 magnitude of associations between mental disorders and TB treatment outcomes.

314 **ACKNOWLEDGEMENTS**

315 We thank Paul Mason, Fred Andayi, Lindokuhle Ndlandla, Lekha Puri, Ajaj Rangaraj,
316 and Rafael Silva Duarte for proposing this systematic review and meta-analyses during
317 a small group session at the McGill Summer Institute of Infectious Diseases.

318

319 Funding was provided in part by the US National Institute of Mental Health (NIMH grant
320 K01 MH104514) and National Institute of Allergy and Infectious Diseases (NIAID grant
321 K01 AI118559).

322 **REFERENCES**

- 323 1. World Health Organization. Implementing the end TB strategy: the essentials.
324 Geneva, Switzerland: World Health Organization; 2015.
- 325 2. Doherty AM, Kelly J, McDonald C, O'Dywer AM, Keane J, Cooney J. A review of
326 the interplay between tuberculosis and mental health. *Gen Hosp Psychiatry*.
327 2013;35(4):398–406.
- 328 3. Ribeiro Macedo L, Reis-Santos B, Riley LW, Maciel EL. Treatment outcomes of
329 tuberculosis patients in Brazilian prisons: a polytomous regression analysis. *Int J*
330 *Tuberc Lung Dis*. 2013 Nov;17(11):1427–34.
- 331 4. Duarte EC, Bierrenbach AL, Barbosa da Silva J, Tauil PL, de Fátima Duarte E.
332 Factors associated with deaths among pulmonary tuberculosis patients: a case-
333 control study with secondary data. *J Epidemiol Community Health*. 2009;63(3):233–
334 8.
- 335 5. Wang WB, Zhao Q, Yuan ZA, Jiang WL, Liu ML, Xu B. Deaths of tuberculosis
336 patients in urban China: a retrospective cohort study. *Int J Tuberc Lung Dis*. 2013
337 Apr;17(4):493–8.
- 338 6. Garrido M da S, Penna ML, Perez-Porcuna TM, de Souza AB, Marreiro L da S,
339 Albuquerque BC, et al. Factors associated with tuberculosis treatment default in an
340 endemic area of the Brazilian Amazon: a case control-study. *PLoS One*. 2012 Jun
341 12;7(6):e39134.
- 342 7. Sweetland AC, Jaramillo E, Wainberg ML, Chowdhary N, Oquendo MA, Medina-
343 Marino A, et al. Tuberculosis: an opportunity to integrate mental health services in
344 primary care in low-resource settings. *Lancet Psychiatry*. 2018 Dec;5(12):952–4.
- 345 8. Kuo S-C, Chen Y-T, Li S-Y, Lee Y-T, Yang AC, Chen T-L, et al. Incidence and
346 outcome of newly-diagnosed tuberculosis in schizophrenics: a 12-year, nationwide,
347 retrospective longitudinal study. *BMC Infect Dis*. 2013 Jul 29;13:351.
- 348 9. Sikjær MG, Løkke A, Hilberg O. The influence of psychiatric disorders on the
349 course of lung cancer, chronic obstructive pulmonary disease and tuberculosis.
350 *Respir Med*. 2018;135:35–41.

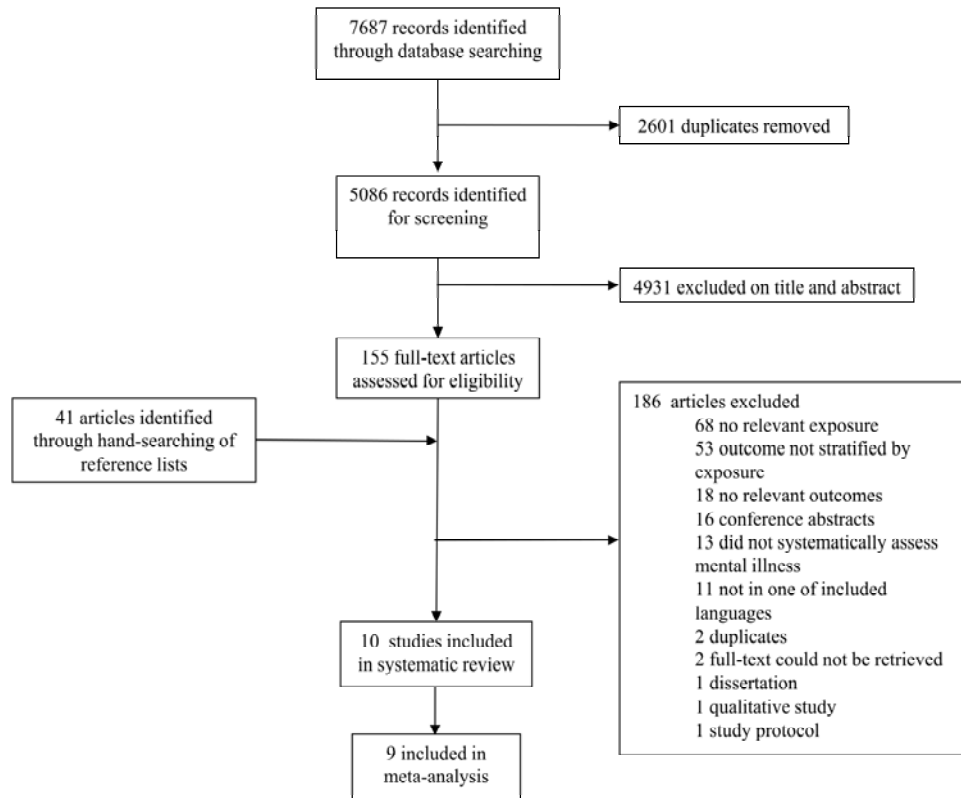
- 351 10. Sweetland A, Oquendo M, Wickramaratne P, Weissman M, Wainberg M.
352 Depression: a silent driver of the global tuberculosis epidemic. *World Psychiatry*.
353 2014 Oct;13(3):325–6.
- 354 11. World Health Organization. Definitions and reporting framework for tuberculosis -
355 2013 revision. Geneva, Switzerland: World Health Organization; 2013.
- 356 12. Bramer WM, Giustini D, de Jonge GB, Holland L, Bekhuis T. De-duplication of
357 database search results for systematic reviews in EndNote. *J Med Libr Assoc*. 2016
358 Jul;104(3):240–3.
- 359 13. Ouzzani M, Hammady H, Fedorowicz Z, Elmagarmid A. Rayyan—a web and mobile
360 app for systematic reviews. *Syst Rev*. 2016;5(1):210.
- 361 14. Sterne JA, Hernán MA, Reeves BC, Savović J, Berkman ND, Viswanathan M, et al.
362 ROBINS-I: a tool for assessing risk of bias in non-randomised studies of
363 interventions. *BMJ*. 2016 Oct 12;355:i4919.
- 364 15. Zhang J, Yu KF. What's the relative risk? A method of correcting the odds ratio in
365 cohort studies of common outcomes. *JAMA*. 1998 Nov 18;280(19):1690–1.
- 366 16. Tierney JF, Stewart LA, Ghersi D, Burdett S, Sydes MR. Practical methods for
367 incorporating summary time-to-event data into meta-analysis. *Trials*. 2007;8:16.
- 368 17. Higgins JPT, Thompson SG, Deeks JJ, Altman DG. Measuring inconsistency in
369 meta-analyses. *BMJ*. 2003;327(7414):557–60.
- 370 18. Ambaw F, Mayston R, Hanlon C, Medhin G, Alem A. Untreated depression and
371 tuberculosis treatment outcomes, quality of life and disability, Ethiopia. *Bull World*
372 *Health Organ*. 2018;96(4):243–55.
- 373 19. Tola HH, Shojaeizadeh D, Garmaroudi G, Tol A, Yekaninejad MS, Ejeta LT, et al.
374 Psychological distress and its effect on tuberculosis treatment outcomes in
375 Ethiopia. *Glob Health Action*. 2015;8:29019.
- 376 20. Govender S, Mash R. What are the reasons for patients not adhering to their anti-
377 TB treatment in a South African district hospital? *AJOL* [Internet]. 2009 [cited 2020
378 Mar 9];51(6). Available from: <https://www.ajol.info/index.php/safp/article/view/50083>
- 379 21. Peltzer K, Naidoo P, Matseke G, Louw J, McHunu G, Tutshana B. Prevalence of
380 post-traumatic stress symptoms and associated factors in tuberculosis (TB), TB

- 381 retreatment and/or TB-HIV co-infected primary public health-care patients in three
382 districts in South Africa. *Psychol Health Med.* 2013;18(4):387–97.
- 383 22. Naidoo P, Peltzer K, Louw J, Matseke G, McHunu G, Tutshana B. Predictors of
384 tuberculosis (TB) and antiretroviral (ARV) medication non-adherence in public
385 primary care patients in South Africa: a cross sectional study. *BMC Public Health.*
386 2013 Apr 26;13:396.
- 387 23. Theron G, Peter J, Zijenah L, Chanda D, Mangu C, Clowes P, et al. Psychological
388 distress and its relationship with non-adherence to TB treatment: a multicentre
389 study. *BMC Infect Dis.* 2015;15(1):253.
- 390 24. Ugarte-Gil C, Ruiz P, Zamudio C, Canaza L, Otero L, Kruger H, et al. Association of
391 major depressive episode with negative outcomes of tuberculosis treatment. *PLoS*
392 *One.* 2013;8(7):e69514.
- 393 25. Scuffell J, Boccia D, Garcia Velarde F, Leon SR, Raviola G, Lecca L, et al. Mental
394 disorders and drug/alcohol use in patients commencing extensively drug-resistant
395 tuberculosis treatment. *Public Health Action.* 2017 Sep 21;7(3):237–9.
- 396 26. Franke MF, Appleton SC, Bayona J, Arteaga F, Palacios E, Llaro K, et al. Risk
397 factors and mortality associated with default from multidrug-resistant tuberculosis
398 treatment. *Clin Infect Dis.* 2008;46(12):1844–51.
- 399 27. Yan S, Zhang S, Tong Y, Yin X, Lu Z, Gong Y. Nonadherence to antituberculosis
400 medications: the impact of stigma and depressive symptoms. *Am J Trop Med Hyg.*
401 2018 Jan;98(1):262–5.
- 402 28. Ruiz-Grosso P, Cachay R, Flor A de la, Schwalb A, Ugarte-Gil C. Association
403 between tuberculosis and depression on negative outcomes of tuberculosis
404 treatment: a systematic review and meta-analysis. *PLoS One.* 2020 Jan
405 10;15(1):e0227472.
- 406 29. Wang PS, Bohn RL, Knight E, Glynn RJ, Mogun H, Avorn J. Noncompliance with
407 antihypertensive medications: the impact of depressive symptoms and psychosocial
408 factors. *J Gen Intern Med.* 2002 Jul;17(7):504–11.
- 409 30. Eze-Nliam CM, Thombs BD, Lima BB, Smith CG, Ziegelstein RC. The association
410 of depression with adherence to antihypertensive medications: a systematic review.
411 *J Hypertens.* 2010;28(9):1785–95.

- 412 31. Uthman OA, Magidson JF, Safren SA, Nachegea JB. Depression and adherence to
413 antiretroviral therapy in low-, middle- and high-income countries: a systematic
414 review and meta-analysis. *Curr HIV/AIDS Rep.* 2014 Sep;11(3):291–307.
- 415 32. Sweetland AC, Kritski A, Oquendo MA, Sublette ME, Norcini Pala A, Silva LRB, et
416 al. Addressing the tuberculosis-depression syndemic to end the tuberculosis
417 epidemic. *Int J Tuberc Lung Dis.* 2017 01;21(8):852–61.
- 418 33. Walker IF, Baral SC, Wei X, Huque R, Khan A, Walley J, et al. Multidrug-resistant
419 tuberculosis treatment programmes insufficiently consider comorbid mental
420 disorders. *Int J Tuberc Lung Dis.* 2017;21(6):603–9.
- 421 34. Deiss RG, Rodwell TC, Garfein RS. Tuberculosis and illicit drug use: review and
422 update. *Clin Infect Dis.* 2009 Jan 1;48(1):72–82.
- 423 35. Janse Van Rensburg A, Dube A, Curran R, Ambaw F, Murdoch J, Bachmann M, et
424 al. Comorbidities between tuberculosis and common mental disorders: a scoping
425 review of epidemiological patterns and person-centred care interventions from low-
426 to-middle income and BRICS countries. *Infect Dis Poverty.* 2020;9(1):4.
- 427 36. Balinda IG, Sugrue DD, Ivers LC. More than malnutrition: a review of the
428 relationship between food insecurity and tuberculosis. *Open Forum Infect Dis.* 2019
429 Mar 7;6(4):ofz102.
- 430 37. Najt P, Fusar-Poli P, Brambilla P. Co-occurring mental and substance abuse
431 disorders: a review on the potential predictors and clinical outcomes. *Psychiatry*
432 *Res.* 2011 Apr 30;186(2):159–64.
- 433 38. Walker IF, Khanal S, Hicks JP, Lamichhane B, Thapa A, Elsey H, et al.
434 Implementation of a psychosocial support package for people receiving treatment
435 for multidrug-resistant tuberculosis in Nepal: a feasibility and acceptability study.
436 *PLoS One.* 2018 Jul 26;13(7):e0201163.
- 437 39. Wingfield T, Tovar MA, Huff D, Boccia D, Montoya R, Ramos E, et al. A randomized
438 controlled study of socioeconomic support to enhance tuberculosis prevention and
439 treatment, Peru. *Bull World Health Organ.* 2017 Apr 1;95(4):270–80.
- 440 40. Rocha C, Montoya R, Zevallos K, Curatola A, Ynga W, Franco J, et al. The
441 innovative socio-economic interventions against tuberculosis (ISIAT) project: an
442 operational assessment. *Int J Tuberc Lung Dis.* 2011 Jun;15(Suppl 2):S50–7.

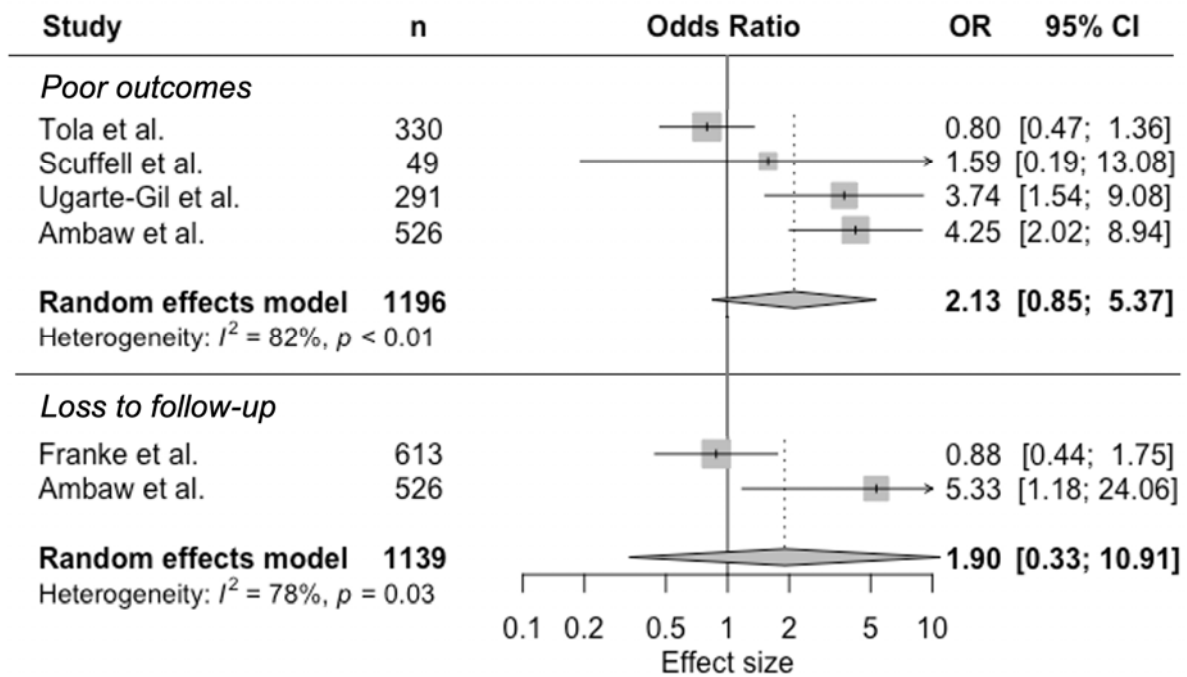
- 443 41. Alipanah N, Jarlsberg L, Miller C, Linh NN, Falzon D, Jaramillo E, et al. Adherence
444 interventions and outcomes of tuberculosis treatment: a systematic review and
445 meta-analysis of trials and observational studies. *PLoS Med.* 2018;15(7):e1002595.
- 446 42. Tanimura T, Jaramillo E, Weil D, Raviglione M, Lönnroth K. Financial burden for
447 tuberculosis patients in low- and middle-income countries: a systematic review. *Eur*
448 *Respir J.* 2014 Jun 1;43(6):1763–75.
- 449 43. Khanal S, Elsey H, King R, Baral SC, Bhatta BR, Newell JN. Development of a
450 patient-centred, psychosocial support intervention for multi-drug-resistant
451 tuberculosis (MDR-TB) care in Nepal. *PLoS One.* 2017;12(1):e0167559.
- 452

453 **Figure 1** Identification, screening, eligibility, and inclusion of studies, reported using the
454 PRISMA guidelines



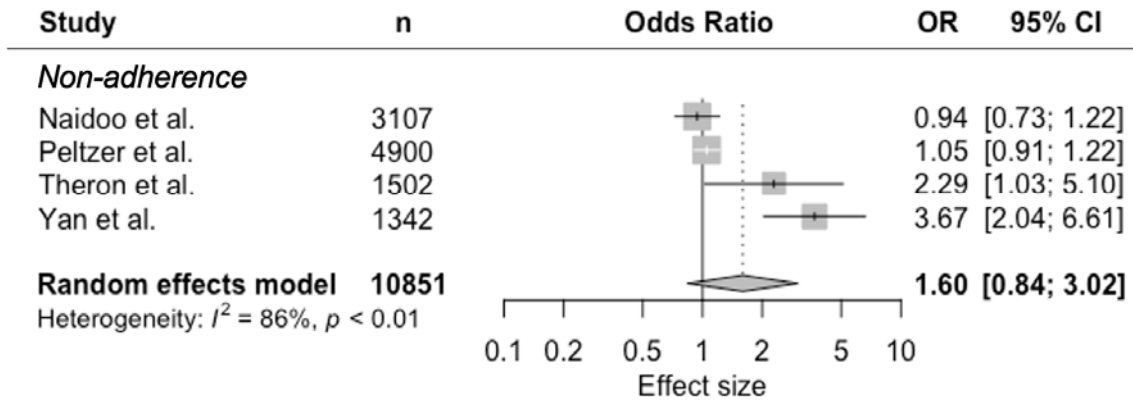
455

456 **Figure 2** Random-effects meta-analysis of observational studies on mental disorders
 457 and tuberculosis treatment outcomes



458
 459

460 **Figure 3** Random-effects meta-analysis of observational studies on mental disorders
 461 and tuberculosis treatment non-adherence



462

463 **Table 1** Search strategy for Pubmed

Search Number	Query
1	Tuberculosis [mh]
2	"tuberculosis"
3	#1 OR #2
4	Mental disorders [mh] mental disorder* OR mental illness* OR mental disease* OR mental health
5	condition*
6	psychiatric disorder* OR psychiatric illness* OR psychiatric disease* anxiety disorder* OR mood disorder* OR depression OR "depressive disorder" OR "depressive disorders" OR depressive episode* OR affective disorder* OR
7	psychotic disorder* OR "psychosis" OR "psychoses"
8	#5 OR #6 OR #7
9	#4 OR #8 Mortality [mh] OR Morbidity [mh] OR Death [mh] OR Prognosis [mh:noexp] OR
10	Disease-Free Survival [mh] OR Treatment Outcome [mh:noexp]
11	Drug Resistance [mh] OR Disease transmission, infectious [mh] Patient Acceptance of Health Care [mh:noexp] OR Treatment Failure [mh] OR Patient Compliance [mh] OR Lost to Follow-Up [mh] OR Patient Dropouts [mh] OR Treatment Refusal [mh] OR Health behavior [mh:noexp] OR Help-seeking
12	Behavior [mh] OR recurrence [mh]
13	#10 OR #11 OR #12 "Mortality" OR "death" OR "deaths" OR "died" OR "cause of death" OR "morbidity" OR fatal OR fatality OR fatal outcome* OR "prognosis" OR
14	"prognoses" cure OR cures OR cured OR "disease clearance" OR "pathogen clearance" OR "microbe clearance" OR "microbial clearance" OR "bacteria clearance" OR "bacterial clearance" OR "infection clearance" OR "organism clearance" OR
15	"disease-free survival" OR "disease-free interval" treatment dropout* OR dropout patient* OR patient dropout* OR no-show
16	patient* "patient compliance" OR "patient noncompliance" OR "patient adherence" OR "patient nonadherence" OR "treatment compliance" OR "treatment
17	noncompliance" OR "treatment adherence" OR "treatment nonadherence" "medication adherence" OR "medication nonadherence" OR "medication
18	compliance" OR "medication noncompliance" "lost to follow-up" OR lost to follow up* OR loss to follow up* OR "loss to follow- up" OR "default" OR "defaults" OR "defaulter" OR "defaulters" OR "defaulting"
19	OR treatment abandon* treatment outcome* OR treatment success* OR treatment fail* OR treatment complet* OR "completion of treatment" OR "success" OR "successes" OR "succeed" OR "succeeds" OR "succeeded" OR "successful" OR "successfully"
20	OR favorabl* OR favourabl* OR unfavorabl* OR unfavourabl*
21	treatment delay* OR treatment refus*
22	help-seeking behavi* OR treatment seeking behavi* OR health behavi*

drug resistan* OR multiple drug resistan* OR multi drug resistan* OR multi-drug
resistan* OR multidrug resistant* OR polydrug resistan* OR extensive* drug
resistan* OR antibiotic resistan* OR antimicrobial resistan* OR disease
transmission* OR resistance amplif* OR "amplification of resistance" OR
"relapse" OR "relapses" OR "relapsed" OR "relapser" OR "relapsers" OR
23 "relapsing" OR "recurrent" OR "recurrence" OR "recurrences"
24 #14 OR #15 OR #16 OR #17 OR #18 OR #19 OR #20 OR #21 OR #22 OR #23
25 #13 OR #24
26 #3 AND #9 AND #25

464

Table 2 Characteristics of included studies reporting an association between mental disorders and tuberculosis treatment outcomes. SES = socioeconomic status.

Study	Years	Country	Study design	Sample size	Type of TB patient	Mental health assessment	Mental disorder (prevalence)	Treatment for mental disorder	TB treatment outcomes
Ambaw	2014-2016	Ethiopia	Prospective cohort	575	Adults starting sensitive TB treatment	Locally validated Patient Health Questionnaire 9 score of 10 or above at baseline	Depression (53.9%)	Patients responding positively to questionnaire item of suicidal ideation referred to health workers at facilities trained in mental health care as part of WHO's mhGAP ^a .	Success Failure Loss to follow-up Death
Franke	1999-2002	Peru	Retrospective cohort	613	Patients starting MDR-TB ^b treatment	Clinically diagnosed at baseline	Mental disorder (18.9%), predominantly depression	Psychiatric consults and group therapy were offered to patients to address mental health needs, including depression, and increase social support. Patients received psychiatric medications	Loss to follow-up Death after loss to follow-up

Scuffell	2010-2012	Peru	Retrospective cohort	49	Adults starting XDR-TB ^c treatment	Psychiatric evaluations per ICD-10 criteria at baseline	Mental disorder (22.4%), sum of depression, anxiety, mixed anxiety-depressive disorder, psychosis	when indicated. NI ^d	Poor (failure, loss to follow-up, death)
Tola	2014	Ethiopia	Prospective cohort	330	Adults starting diagnosed with all types of TB on treatment for 1-2 months	Locally validated Kessler K-10 score 16 or above, at baseline	Psychological distress (67.6%)	NI ^d	Success (cure completion) Poor (loss to follow-up, failure, death)
Jgarte-Gil	2010-2011	Peru	Prospective cohort	291	Adults newly diagnosed with TB starting treatment	Locally validated 5-item Center for Epidemiologic Studies Depression Scale score 6 or above at baseline	Depression (37.5%)	Patients who had scores compatible with depression were referred to the treating physician of the Peruvian National TB Program.	Poor (death loss to follow-up)
Theron	2011-2012	South Africa, Zimbabwe, Zambia, Tanzania	Prospective cohort within randomized controlled trial	1,502	Adults with TB symptoms	Kessler K-10 scale as a continuous exposure at baseline	Psychological distress (22% with score greater or equal to 30)	NI ^d	Death Non-adherence
Govender	NI ^d	South Africa	Case-control	159	Newly registered	ICD-10 criteria at baseline,	Depression (prevalence not	NI ^d	Non-adherence

Vaidoo	2011	South Africa	Cross-sectional	3,107	patients starting TB treatment Adult new TB and new retreatment patients within one month of anti-TB treatment	considered as a depression score Kessler K-10 scale score 30 or above	recorded) Psychological distress (25.0%)	NI ^d	Non-adherence
Peltzer	2011	South Africa	Cross-sectional	4,900	Adults starting new treatment or retreatment within 1 month of treatment	4 item Primary Care PTSD Screen score of 2 or above	Post-traumatic stress disorder (29.6%)	NI ^d	Non-adherence
Yan	2013-2014	China	Cross-sectional	1,342	Patients with a diagnosis of TB, without a diagnosis of psychosis	Locally validated 20-item Center for Epidemiologic Studies Depression Scale score 16 or above. Mild depressive symptoms (16-25), severe depressive symptoms (≥26)	Depression (prevalence not reported)	NI ^d	Non-adherence

^amhGAP = Mental Health Gap Action Programme

^bMDR-TB = Multi drug resistant tuberculosis

^cXDR-TB = Extensively drug resistant tuberculosis

^dNI = No information

Table 3 Findings of included studies reporting an association between mental disorders and tuberculosis treatment outcomes

Study	Mental disorder	TB treatment outcome	Definition of TB treatment outcome	Time of outcome assessment	Adjustment for confounders	Findings
Ambaw	Depression	Success	Cure or treatment course completion	6 months	Age, Sex, SES	Adjusted RR 0.95 (0.91-1.00)
Tola	Psychological distress	Success	Cure or treatment course completion	6 months	Age, Sex, SES	Adjusted OR 2.87 (1.05-7.81)
Scuffell	Mental disorder	Poor	Failure, loss to follow-up, or death	Not applicable	None	Unadjusted OR 1.59 (0.26-17.6)
Ugarte-Gil	Depression	Poor	Death or loss to follow-up	6 months	Age, Sex, SES	Adjusted HR 3.46 (1.48-8.08)
Ambaw	Depression	Loss to follow-up	Patient on treatment for at least four weeks and whose treatment was interrupted for eight or more consecutive weeks	6 months	Age, Sex, SES	Adjusted RR 9.09 (6.72-12.30)
Franke	Mental disorder	Loss to follow-up	Patient missed ≥ 30 consecutive days of treatment, prior to physician-approved treatment completion or a physician suspended medications for a patient who was repeatedly nonadherent even after having undergone adherence counseling.	Not applicable	Age, Sex, SES	Unadjusted HR 0.96 (0.50-1.83)
Ambaw	Depression	Death	Death of patient (due to any cause) within six months of starting treatment	6 months	Age, Sex, SES	Adjusted RR 2.99 (1.54-5.78)
Theron	Psychological distress	Death	Not specified	6 months	Not reported	Unadjusted OR for continuous exposure 1.056 (1.035-1.082)
Theron	Psychological	Non-	Patients who were noted to have	2 months	Not specified.	Adjusted OR 2.29

	distress	adherence	missed at a scheduled DOTS visit as recorded on the patient's DOTS clinic card		Adjusted for site-baseline morbidity, and other clinical and socioeconomic differences.	(1.03-5.10)
Govender	Depression	Non-adherence	Patients still taking their anti-TB treatment at the end of the intensive phase.	End of intensive phase	None	Reported mean depression score of 7.14 (6.28-8.00) non-adherence versus 2.55 (1.88-3.22) adherence
Naidoo	Psychological distress	Non-adherence	Adherence assessed with the following question: "In your tuberculosis treatment in the past 3-4 weeks how many percent of your anti-tuberculosis medication did you take?" Adherence defined as having taken less than 90% of the anti-TB drugs.	During intensive phase of DOTS programme	Age, Sex, SES	Adjusted OR 0.94 (0.73-1.22)
Peltzer	Post-traumatic stress disorder	Non-adherence	Visual Analogue Scale to answer "In past 3-4 weeks how many percent were you taking your anti-tuberculosis medication?". Non-adherence defined as having taken less than 90% of their anti-TB medication.	Within 1 month of treatment	None	Unadjusted OR 1.00 (0.86-1.17)
Yan	Severe depressive symptoms	Non-adherence	8-item Morisky Medication Adherence Scale score less than 6 being low adherence, 6 to less than 8 being medium adherence, and 8 and higher being high adherence	No information	Age, Sex, SES	Compared to high adherence, adjusted OR 3.67 (2.04-6.61) for low TB treatment adherence

Table 4 Risk of bias assessment of observational studies on mental disorder and TB treatment outcomes and non-adherence, according to ROBINS-I criteria

Study	Risk of bias							Overall bias judgement
	Due to confounding	Selection of participants into the study	Classification of exposure	Deviations from intended exposure	Missing data	Measurement of outcomes	Selection of the reported result	
Ambaw	Moderate	Low	Low	Low	Low	Low	Low	Moderate
Franke	Serious	Low	Low	Serious	Low	Low	Low	Serious
Govender	Serious	Serious	Serious	?	Serious	Serious	Low	Serious
Naidoo	Moderate	Serious	Serious	?	Low	Serious	Serious	Serious
Peltzer	Serious	Serious	Serious	Low	?	Serious	Low	Serious
Scuffell	Serious	Low	Low	?	Low	Low	Low	Serious
Theron	Moderate	Low	Serious	?	Low	Low	Low	Serious
Tola	Serious	Serious	Serious	?	Low	Low	Low	Serious
Ugarte-Gil	Moderate	Low	Low	Serious	?	Low	Low	Serious
Yan	Moderate	Serious	Serious	Low	Low	Serious	Low	Serious

? = no information on which to base a judgement about risk of bias for this domain

Low risk of bias (the study is comparable to a well-performed randomized trial with regard to this domain)

Moderate risk of bias (the study is sound for a non-randomized study with regard to this domain but cannot be considered comparable to a well-performed randomized trial)

Serious risk of bias (the study has some important problems)

Critical risk of bias (the study is too problematic to provide any useful evidence on the effects of intervention)