

## **Chloroquine, but not hydroxychlorquine, prolongs the QT interval in a primary care population.**

Jonas L. Isaksen, MSc<sup>a</sup>, Anders G. Holst, MD, PhD<sup>b</sup>, Adrian Pietersen, MD<sup>d</sup>, Jonas B. Nielsen, MD, PhD<sup>e</sup>, Claus Graff, MSc, PhD<sup>c</sup>, Jørgen K. Kanters, MD<sup>a</sup>

Affiliations:

<sup>a</sup>Laboratory of Experimental Cardiology, Department of Biomedical Sciences, University of Copenhagen, Copenhagen, Denmark.

<sup>b</sup>Acesion Pharma, Copenhagen, Denmark

<sup>c</sup>Department of Health Science and Technology, Aalborg University, Aalborg, Denmark

<sup>d</sup>Copenhagen General Practitioners' Laboratory, Copenhagen, Denmark

<sup>e</sup>Division of Cardiovascular Medicine, Department of Internal Medicine, University of Michigan, Ann Arbor, MI

Address for correspondence:

Jørgen K. Kanters, Department of Biomedical Sciences 10.5, Nørre Allé 14, 2200 Copenhagen N, Denmark. [jkanters@sund.ku.dk](mailto:jkanters@sund.ku.dk), phone: +45 28757402

## **Abstract** (325/350 words)

**Background**—Chloroquine (CQ) and Hydroxychloroquine (HCQ) have recently been suggested as treatment for the current Corona Virus Disease 2019 (COVID-19) pandemic. However, despite their long-term use and only few case reports on adverse effects, CQ and HCQ are listed as a known risk of the lethal ventricular arrhythmia Torsade de Pointes and their cardiac safety profile is being questioned. Thus, we aimed to investigate the electrocardiographic and mortality effects of CQ and HCQ in a primary care population.

**Methods**—We used Danish health care registers and electrocardiograms (ECGs) from primary care to define three studies. 1) A paired study of subjects with ECGs before and during use of CQ/HCQ, 2) a matched ECG study of subjects taking CQ/HCQ compared to controls, and 3) a mortality study on people taking HCQ matched to control. In both matched studies, we adjusted for connective tissue diseases, use of QT-prolonging drugs, and cardiac disease. We used the QTc interval as the marker for electrocardiographic safety. In the mortality study, cases were followed from first claimed prescription until 300 days after estimated completion of the last prescription. 95% confidence intervals follow estimates in parenthesis.

**Results**—Use of CQ was associated with a 5.5 (0.7;10) ms increase in QTc in the paired study (n=10). In the matched study (n=28, controls=280), QTc was insignificantly increased in subjects taking CQ by 4.7 (-3.4;13) ms.

With a  $\Delta$ QTc of 1.0 (-5.6;7.5), use of HCQ was not associated with an increased QTc in the paired study (n=32). In the matched study (n=172, controls=1,720), QTc also was not different between groups (p=0.5). In the mortality study (n=3,368), use of HCQ was associated with a hazard ratio of 0.67 (0.43;1.05).

**Conclusions**—In subjects free of COVID-19, we found a small increase in QTc associated with use of chloroquine, but not hydroxychloroquine. We found no increased mortality associated with use of hydroxychloroquine.

## Introduction

The Corona Virus Disease 2019 (COVID-19) pandemic has led to investigation and use of chloroquine (CQ) and hydroxychloroquine (HCQ) in the treatment of COVID-19. CQ and HCQ are 4-aminoquinilines approved for medical use in 1949 and 1955, respectively, and both drugs interfere with important physiological mechanisms that may improve the clinical course of patients with COVID-19. CQ and HCQ are weak bases and accumulate in lysosomes increasing pH which interferes with virus entry and fusion(1). CQ and HCQ also inhibit viral gene expression and post translational modification necessary for viral replication(1). Furthermore, CQ and HCQ have direct anti-inflammatory actions by inhibition of B- and T-cell receptors and especially by decreasing TNF- $\alpha$  and cytokine production (interleukin-1 and interleukin-6)(2). The drawback is that CQ and HCQ have known cardiotoxic effects(3) including vasodilatation, hypotension, hypokalemia, negative inotropy, and arrhythmias. The risk of arrhythmias may partly be mediated through the other cardiotoxic effect and partly due to ion channel blockade. Both CQ and HCQ are known hERG-blockers, but also block a variety of other ion channels including sodium, calcium,  $I_{K1}$  potassium and pacemaker funny channels(4). Since CQ and HCQ are old drugs, the approvals were granted long before thorough QT studies were required and only limited ECG safety data exists. Despite the known hERG block, there is a paucity of documented Torsades de Pointes ventricular tachycardia (TdP) during treatment,(5) which may be attributed to the concomitant calcium block protecting against TdP.(6) Only three cases of TdP have been published(7-9), all in patients with concomitant morbidities as cirrhosis, heart failure, or preexisting QT-prolongation.

Only limited electrocardiographic information is available of the effect of CQ/HCQ. A study of 14 healthy subjects receiving 1.5 g of CQ (normal dose in COVID 0.15 g OD(2)) found significant prolongation of the QT interval around 20 ms(10). With HCQ there does not exist any studies with comparable ECG data before and after treatment. Since COVID-19 attacks the heart causing heart failure and even shock, it is unknown whether the arrhythmias seen in COVID-19 patients treated with HCQ/CQ are secondary to the disease or caused by the HCA/CQ treatment. Thus, an investigation of the electrocardiographic and mortality risks associated with CQ/HCQ treatment is needed.

The aim of the present study was to investigate the effects of CQ/HCQ on electrocardiographic parameters in a large primary care population without COVID-19 using Danish health care registers and electronic ECG data.

## **Methods**

### *ECG*

The primary population consisted of 449,584 patients with 978,901 ECGs from the Copenhagen General Practitioners' Laboratory (CGPL). CGPL was the core facility that received referrals from most General Practitioners in the Copenhagen area from 2001-2015 for blood sampling and ECG examination. Data from CGPL was linked with Danish registries for a full patient history and follow-up. The Danish Civil Register contains information on sex, birthday, and emigration/permanent stays abroad. The Danish Register of Patient Records contains information on all hospital contacts (in-patient and out-patient). The Register used International Classification of Diseases, eighth revision

(ICD-8) codes until 1993 and ICD-10 codes from 1994. The Danish Register of Medication Statistics holds information on every claimed prescription from Danish pharmacies. The Danish Register of Causes of Death contains information on mortality for all Danish Citizens.

Using the 12SL algorithm version 23 (GE Healthcare, Wauwatosa, WI), we obtained heart rate, QT interval, QRS duration, JT interval, PR interval, and presence of Right Bundle Branch Block (RBBB) or Left Bundle Branch Block (LBBB). The QT interval was corrected with Bazett (QTcB) and Framingham (QTcFrh) formulae. Based on the JT interval, JTc was obtained by linear correction for heart rate ( $JTc = JT - 119.4108 \cdot (RR - 1)$ , whereby RR is the R-to-R interval in seconds and JT is measured in ms).

### *Studies and populations*

From the primary study population, we defined three subsets, each with a CQ and a HCQ population: 1) Paired study, 2) Matched study, and 3) Mortality study. As an additional analysis, we conducted a fourth study on connective tissue diseases with three populations independent of CQ/HCQ prescriptions.

#### *Paired study*

The Paired study is comprised of people with an ECG taken during a period of CQ or HCQ treatment, respectively, and with a prior baseline ECG without HCQ/CQ treatment. Thus, in this study, the subjects served as their own controls.

#### *Matched study*

The Matched study is a comparison of subjects with an ECG taken during use of CQ or HCQ, respectively, compared to a matched reference population with no history of CQ and HCQ usage, respectively. Matching was done 10:1 on sex and age (rounded to integer years), sampled without replacement.

#### *Mortality study*

The Mortality study is a study of subjects with a prescription of HCQ matched 1:1 to sex- and age-matched controls with no prescription. Cases and their matched control were followed from the day of the first prescription until 300 days after predicted exhaustion of the last claimed prescription of the case. Since HCQ replaced CQ as the preferred drug in 1995 with some but only few CQ prescriptions thereafter, the mortality study was not performed in the CQ group due to lack of power.

#### *RA/SLE/SS study*

The RA/SLE/SS study included subjects with and without rheumatoid arthritis (RA), systemic lupus erythematosus (SLE), and Sjögren's syndrome (SS), respectively. As in the Matched study on CQ and HCQ, we identified subjects with a diagnosis of RA, SLE, or SS, respectively, and matched them 1:1, 3:1, and 2:1 to controls, respectively, on sex and age (rounded to integer years), sampled without replacement.

#### *Medication and comorbidity*

Using Anatomical Therapeutic Chemical (ATC) codes, we identified use of CQ and HCQ. SLE, RA, SS, and ischemic heart disease were defined using the International

Classification of Diseases, 10<sup>th</sup> revision (ICD-10). Diabetes mellitus, hypertension, and congestive heart failure were all defined using a combination of ICD-10 and ATC codes at baseline as done previously.(11) Exact definitions using ICD-10 and ATC codes are given in the **Supplementary Material**. Use of QT-prolonging drugs was defined as concomitant prescription of one of the 63 drugs listed on CredibleMeds.org on April 30<sup>th</sup> 2020 as having a known risk of Torsade des Pointes (TdP, a possibly lethal polymorphic form of ventricular tachycardia) except for CQ and HCQ (see the **Supplementary Material** for the full list).

### *Statistical considerations*

For subjects in the paired population, subjects served as their own controls and the results were thus inherently adjusted for comorbidity, age, and sex. We adjusted for a change in use of QT-prolonging drugs where appropriate. We used a random-effects regression model for continuous variables.

For subjects in the matched population, we compared continuous electrocardiographic variables using linear regression crudely as well as with adjustment for RA, SLE, SS, use of QT-prolonging drugs, hypertension, ischemic heart disease congestive heart failure, and diabetes mellitus, as appropriate. Categorical variables were tested using a two-sample test of proportions.

For subjects in the mortality population, we used Cox regression with full adjustment as with the matched population, as appropriate. Subjects were censored upon emigration

individually or 300 days after the last claimed prescription for each case/control pair. We used time-on-study as underlying time variable in the Cox model.

The Danish Data Protection Agency approved the use of de-identified data (2007-58-0015) on the conditions that the exact number of subjects in groups of < 3 subjects not be disclosed and that no calculations (including p-values) be reported on groups of < 5 subjects. All estimates were reported along with a 95 % confidence interval indicated as (lower to upper). Data management and statistical computations were performed in Stata (version 16), and a p-value < 0.05 was considered significant.



## Results

### Paired study

We identified ten subjects who had an ECG taken during a treatment of CQ and who had a prior ECG without treatment of CQ (**Table 1**, CQ population). Similarly, for treatment with HCQ, we identified 32 subjects (**Table 1**, HCQ population).

Compared to their baseline ECG, subjects taking CQ had a significantly longer QTcFrh by 5.5 ms (0.7 to 10,  $p=0.03$ ). We found no evidence of an increased QTcFrh after use of HCQ (1.0 ms, -5.6 to 7.5 ms,  $p=0.8$ ).

### *Matched study*

We identified 28 and 172 subjects with an ECG taken during a period of treatment with CQ or HCQ, respectively, and matched them 10:1 with controls.

Subjects on CQ (**Table 2**), compared to controls, were more likely to suffer from ischemic heart disease, but not hypertension. With full adjustment for RA, SLE, SS, QT-prolonging drugs, hypertension, diabetes, ischemic heart disease, and congestive heart failure, QTcFrh was 4.7 ms longer in the CQ group compared to control, but with a wide confidence interval (-3.4 to 13 ms,  $p=0.3$ ).

Subjects on HCQ (**Table 3**) more often than controls had RA, SLE or SS, as well as hypertension, ischemic heart disease, congestive heart failure, and diabetes. In the unadjusted analysis, we found an increased QTcFrh interval of 5 ms ( $p=0.002$ ). However,

after adjustment for RA, SLE, SS and QT-prolonging drugs, there was no significant difference in QTcFrh between cases and controls (3.1 ms, -1.1 to 7.3 ms,  $p=0.15$ ) and after additional adjustment for ischemic heart disease, hypertension, diabetes, and congestive heart failure, the difference in QTcFrh was reduced further to 1.3 ms (-2.9 to 5.6,  $p=0.5$ ). QRS duration followed a similar pattern in the adjusted and unadjusted analyses, whereas the JT interval also in the unadjusted analysis was comparable between the groups.

### Mortality study

We identified 3,368 subjects with a prescription for HCQ irrespective of an ECG (**Table 4**).

Subjects on HCQ were more likely to have RA, SLE, SS, hypertension, ischemic heart disease, and congestive heart failure. In the most crude analysis, adjusted only for sex and age, mortality was not different between subjects on HCQ and controls (HR=1.20, 0.85 to 1.71,  $p=0.3$ ). With adjustment for RA, SLE, SS, and use of other QT-prolonging drugs, we still found no significant difference between Hydroxychloroquine and matched controls (HR=0.80, 0.51 to 1.26,  $p=0.3$ ). Further adjustment for ischemic heart disease, diabetes, hypertension, and congestive heart failure did not change the association materially.

Kaplan-Meier survival curves are shown in **Figure 1**.

### RA/SLE/SS study

In the RA/SLE/SS study we defined three populations of cases and controls with and without RA, SLE, and SS respectively. We found no difference in crude or adjusted QTcFrh compared to control in any of the populations (**Supplementary Tables 1-3**). Heart rate was significantly higher in subjects with RA and SLE, but lower in subjects with SS. Crude PR interval was increased in subjects with SS, but not with adjustment for diabetes, ischemic heart disease, hypertension, and congestive heart failure. In the fully adjusted adjusted for sex, age, SS, SLE, QT-prolonging drugs, ischemic heart disease, diabetes, hypertension, and congestive heart failure, patients with RA had a shorter QRS duration compared to controls.

## **Discussion**

In this real-world study, we found a small, but significant, heart rate-corrected QT-prolongation of 5 ms with CQ, but no QT prolongation with HCQ. We did not find increased mortality in subjects taking CQ or HCQ.

### *Electrocardiographic safety*

CQ and HCQ are both listed as known causes of TdP on CredibleMeds.org,(12) and CQ is recognized by the World Health Organization (WHO) as prolonging the QT/QTc interval.(5) However, WHO states that CQ is associated with a low risk of cardiotoxicity based on PK/PD modelling.(5) In the present study, we found an increase in QTcFrh of 5.5 ms in the

paired CQ population, and no difference the paired HCQ population. Another study(10) showed that a 1,500 mg dose of CQ yielded an increase in QTc of 15-30 ms.

Matched on sex and age, subjects receiving HCQ showed a 5 ms increase in QTcFrh. However, the increased QTc disappeared upon adjustment for use of QT-prolonging medication and connective tissue diseases. Hence, the increased QTcFrh was likely caused by rheumatic disease and not HCQ. Thus, in both the matched and the paired analyses, we were unable to demonstrate any statistically significant increase in QTc associated with use of HCQ.

### *Mortality*

We did not find that use of HCQ was associated with an increased mortality. This is not surprising, since the toxicology profile of HCQ is better than that of CQ.(13) WHO reports that the few deaths associated with use of HCQ were caused by overdosing and chronic indications for HCQ.(5)

Only three case studies have demonstrated arrhythmic adverse events in association with use of CQ/HCQ. One study(7) involved a syncope in a patient with SLE and end stage renal disease and QT prolongation before HCQ initiation. Another study(8) documents TdP in a patient with SLE, with a history of cirrhosis, HBV-related hepatoma, prior myocardial infarction, and ventricular septal defect. The third study(9) involved a patient with SLE, who also suffered from Congestive Heart Failure, Chronic Kidney Disease stage 5, and Hypertension. All three case studies thus features patients with severe QT-prolonging comorbidity and chronic rather than episodic use of Hydroxychloroquine. Collectively,

evidence from the present and other studies found little risk of death or arrhythmic events associated with episodic use of HCQ.

### *Indication for HCQ*

Malaria was and still remains an indication for HCQ in Denmark, although it is no longer recommended.(14) HCQ is commonly prescribed for connective tissue diseases such as Rheumatoid Arthritis, Systemic Lupus Erythematosus, and Sjögren's Syndrome. We were only able to identify the reason for the HCQ treatment in forty to sixty percent of the cases, likely because milder connective tissue cases were treated in primary care and therefore never obtained a hospital ICD-10 diagnosis detectable in our registries. Furthermore, some subjects may have been prescribed HCQ as malaria prophylaxis.

### *CQ and HCQ for treatment of COVID-19*

CQ/HCQ has emerged as a possible treatment for COVID-19.(15) Naturally, given the known risk of increased QTc, concerns about the safety of the drugs have been raised.(16, 17) We have found different electrocardiographic safety profiles for CQ and HCQ. With CQ, we have demonstrated an increased QTcFrh of 5.5 ms. With HCQ, we found no increase in QTcFrh. For use of CQ and HCQ, respectively, we found no increased mortality.

CQ and HCQ have been used as malaria prophylaxis for decades without raising red flags and the use of HCQ in higher doses to treat auto-immune diseases also has not been

associated with an increased mortality. The few case studies that exist were associated with chronic use of HCQ beyond the duration corresponding to a COVID-19 treatment and with severe QT-prolonging comorbidity.

Arrhythmias are commonly seen in patients with COVID-19 (one study(18) reports 17 %) independently of treatment with CQ, HCQ, or azithromycin. The virus likely attacks the myocardium directly due to the high prevalence of angiotensin converting enzyme 2 (ACE2) receptors in the heart.(19) Shi et al. found cardiac lesions (based on high-sensitivity Troponin I) in 20 % of COVID-19 patient on admission.(20) There is no solid evidence for any significant proarrhythmic effects of CQ or HCQ. However, COVID-19 may play a super additive role in the safety profile of CQ/HCQ, and that can only be assessed with randomized studies on CQ/HCQ.

The present study found no grounds for concern for HCQ and minor cautions for CQ in patients free of COVID-19. Saleh et al.(21) in 200 COVID-19 patients treated with CQ/HCQ plus 60 % azithromycin, found no cases of TdP, although seven patients discontinued treatment due to QT-prolongation. Mercurio et al.(16) found one case of TdP in 90 patients treated with HCQ or HCQ+azithromycin. Bessière et al.(17) found no cases of TdP in 40 patients treated with HCQ plus/minus azithromycin. A limitation of the present study is that we cannot exclude an interaction between COVID-19 and CQ/HCQ treatment, and thus further studies – preferably randomized clinical trials – are needed to assess the cardiac safety of CQ/HCQ in patients with COVID-19.

## **Conclusions**

Using matched and paired studies of subjects free of COVID-19 receiving chloroquine or hydroxychloroquine, we found that use of chloroquine but not hydroxychloroquine was associated with a small increase in QTc. We were unable to show increased mortality associated with hydroxychloroquine.

## References

1. Kapoor KM, Kapoor A. Role of Chloroquine and Hydroxychloroquine in the Treatment of COVID-19 Infection- A Systematic Literature Review [Preprint server]. 2020 [updated March 30, 2020; cited 2020 May 7].
2. Sinha N, Balayla G. Hydroxychloroquine and covid-19. *Postgrad Med J*. 2020.
3. White NJ. Cardiotoxicity of antimalarial drugs. *Lancet Infect Dis*. 2007;7(8):549-58.
4. Capel RA, Herring N, Kalla M, Yavari A, Mirams GR, Douglas G, et al. Hydroxychloroquine reduces heart rate by modulating the hyperpolarization-activated current *I<sub>f</sub>*: Novel electrophysiological insights and therapeutic potential. *Heart Rhythm*. 2015;12(10):2186-94.
5. World Health Organization - Malaria Policy Advisory Committee Meeting. The Cardiotoxicity of Antimalarials. 2017.
6. Vicente J, Johannesen L, Mason JW, Crumb WJ, Pueyo E, Stockbridge N, et al. Comprehensive T wave morphology assessment in a randomized clinical study of dofetilide, quinidine, ranolazine, and verapamil. *J Am Heart Assoc*. 2015;4(4).
7. O'Laughlin JP, Mehta PH, Wong BC. Life Threatening Severe QTc Prolongation in Patient with Systemic Lupus Erythematosus due to Hydroxychloroquine. *Case Rep Cardiol*. 2016;2016:4626279.
8. Chen CY, Wang FL, Lin CC. Chronic hydroxychloroquine use associated with QT prolongation and refractory ventricular arrhythmia. *Clin Toxicol (Phila)*. 2006;44(2):173-5.
9. Morgan ND, Patel SV, Dvorkina O. Suspected hydroxychloroquine-associated QT-interval prolongation in a patient with systemic lupus erythematosus. *J Clin Rheumatol*. 2013;19(5):286-8.
10. Mzayek F, Deng H, Mather FJ, Wasilevich EC, Liu H, Hadi CM, et al. Randomized dose-ranging controlled trial of AQ-13, a candidate antimalarial, and chloroquine in healthy volunteers. *PLoS Clin Trials*. 2007;2(1):e6.
11. Ghouse J, Isaksen JL, Skov MW, Lind B, Svendsen JH, Kanters JK, et al. Effect of diabetes duration on the relationship between glycaemic control and risk of death in older adults with type 2 diabetes. *Diabetes Obes Metab*. 2019.
12. Woosley RL, Heise CW, Romero KA. QTdrug List [www.Crediblemeds.org](http://www.Crediblemeds.org) [Available from: [www.Crediblemeds.org](http://www.Crediblemeds.org)].
13. McChesney EW. Animal toxicity and pharmacokinetics of hydroxychloroquine sulfate. *Am J Med*. 1983;75(1, Part 1):11-8.
14. World Health Organization. International Travel and Health <https://www.who.int/ith/ith-country-list.pdf?ua=12018> [updated November 15, 2020].
15. Gautret P, Lagier JC, Parola P, Hoang VT, Meddeb L, Mailhe M, et al. Hydroxychloroquine and azithromycin as a treatment of COVID-19: results of an open-label non-randomized clinical trial. *Int J Antimicrob Agents*. 2020:105949.
16. Mercurio NJ, Yen CF, Shim DJ, Maher TR, McCoy CM, Zimetbaum PJ, et al. Risk of QT Interval Prolongation Associated With Use of Hydroxychloroquine With or Without Concomitant Azithromycin Among Hospitalized Patients Testing Positive for Coronavirus Disease 2019 (COVID-19). *JAMA Cardiol*. 2020.
17. Bessière F, Rocca H, Delinière A, Charrière R, Chevalier P, Argaud L, et al. Assessment of QT Intervals in a Case Series of Patients With Coronavirus Disease 2019 (COVID-19) Infection Treated With Hydroxychloroquine Alone or in Combination With Azithromycin in an Intensive Care Unit. *JAMA Cardiol*. 2020.
18. Wang D, Hu B, Hu C, Zhu F, Liu X, Zhang J, et al. Clinical Characteristics of 138 Hospitalized Patients With 2019 Novel Coronavirus-Infected Pneumonia in Wuhan, China. *Jama*. 2020;323(11):1061-9.
19. Zheng YY, Ma YT, Zhang JY, Xie X. COVID-19 and the cardiovascular system. *Nat Rev Cardiol*. 2020;17(5):259-60.
20. Shi S, Qin M, Shen B, Cai Y, Liu T, Yang F, et al. Association of Cardiac Injury With Mortality in Hospitalized Patients With COVID-19 in Wuhan, China. *JAMA Cardiol*. 2020.



21. Saleh M, Gabriels J, Chang D, Kim BS, Mansoor A, Mahmood E, et al. The Effect of Chloroquine, Hydroxychloroquine and Azithromycin on the Corrected QT Interval in Patients with SARS-CoV-2 Infection. *Circ Arrhythm Electrophysiol.* 2020.

## Tables

**Table 1.** Paired population: ECG findings in subjects with ECG during a treatment with chloroquine or hydroxychloroquine. Reported are findings from a prior baseline ECG and change upon drug administration.

Variables	ECG before and during treatment	
	Chloroquine	Hydroxychloroquine
n	10	32
Age, years	61.6 ± 5.6	54.5 ± 12.1
Sex, Females	<3	24 (75 %)
Baseline QT-prolonging drug aside from CQ/HCQ	<3	4 (13 %)
Study QT-prolonging drug aside from CQ/HCQ	<3	6 (19 %)
<b>ECG variables</b>		
Baseline Heart Rate, bpm	64.8 ± 14.7	70.9 ± 14.8
ΔHeart Rate, bpm	1.3 [-5.6;8.2], p=0.7	2.3 [-1.7;6.2], p=0.3
Baseline QTcB, ms	427 ± 30	432 ± 32
ΔQTcB, ms	6.0 [-0.6;12.7], p=0.08	2.4 [-6.3;11], p=0.6
ΔQTcB > 30 ms	<3	3 (9 %)
Baseline QTcFrh, ms	421 ± 20	420 ± 23
ΔQTcFrh, ms	5.5 [0.7;10], p=0.03	1.0 [-5.6;7.5], p=0.8
ΔQTcFrh > 30 ms	<3	<3
Baseline JTc, ms	316 ± 22	317 ± 22
ΔJTc, ms	2.8 [-3.3;8.9], p=0.4	-0.6 [-6.3;5.0], p=0.8
Baseline QRS duration, ms	104 ± 21	98 ± 18
ΔQRS duration, ms	2.2 [-1.4;5.8], p=0.2	0.2 [-3.7;4.0], p=0.9
Baseline PR interval, ms	164 ± 24	164 ± 29

$\Delta$ PR interval, ms	-0.4 [-9.1;8.2], p=0.9	-2.8 [-9.4;3.8], p=0.4
Baseline RBBB	<3	<3
Study RBBB	<3	<3
Baseline LBBB	<3	<3
Study LBBB	<3	<3

**Table 2.** Matched population: Characteristics and ECG findings in subjects taking chloroquine vs. control. For the ECG findings, adjusted models show effects independent of comorbidities.

Variable	Chloroquine	Control	p		
n	28	280			
Age, years	53.7 ± 14.0	53.6 ± 13.8			
Sex, females	11 (39 %)	110 (39 %)			
Rheumatoid Arthritis	<3	5 (1.8 %)			
Systemic Lupus Erythematosus	<3	<3			
Sjögren's Syndrome	<3	<3			
Use of QT-prolonging drug <sup>+</sup>	<3	16 (6 %)			
Hypertension	6 (21 %)	55 (20 %)	0.8		
Ischemic Heart Disease	7 (25 %)	20 (7 %)	0.001		
Congestive Heart Failure	<3	<3			
Diabetes Mellitus	4 (14 %)	19 (7 %)			
<b>ECG variables</b>	<b>Chloroquine</b>	<b>Control</b>	<b>P</b>	<b>Model 2* Δ/OR</b>	<b>Model 3<sup>§</sup> Δ/OR</b>
Heart rate, bpm	70.3 ± 15.9	71.9 ± 15.0	0.6	-1.8 [-7.6;4.1], p=0.6	-1.7 [-7.8;4.4], p=0.6
QTcB, ms	432 ± 27	429 ± 27	0.6	4.4 [-5.7;14], p=0.4	2.9 [-7.4;13], p=0.6
QTcFrh, ms	422 ± 21	417 ± 21	0.3	6.0 [-2.1;14], p=0.14	4.7 [-3.4;13], p=0.3
QTcB > 500 ms	<3	<3		NA	NA
JTc, ms	318 ± 17	317 ± 20	0.8	2.0 [-5.5;9.5], p=0.6	1.0 [-6.7;8.7], p=0.8
PR interval, ms	162 ± 23	162 ± 23	0.9	0.9 [-7.9;9.8], p=0.8	0.2 [-9.0;9.4], p=1.0
QRS duration, ms	100 ± 20	96 ± 13	0.16	4.5 [-1.0;10], p=0.11	4.2 [-1.5;9.8], p=0.15
RBBB	<3	4 (1.4 %)		Too few cases	Too few cases
LBBB	<3	<3		Too few cases	Too few cases

\*Adjusted for sex, age, Rheumatoid Arthritis, Systemic Lupus Erythematosus, Sjögren's Syndrome, and QT-prolonging drugs<sup>+</sup>. <sup>§</sup>Adjusted for sex, age, Rheumatoid Arthritis, Systemic Lupus Erythematosus, Sjögren's Syndrome, QT-prolonging drugs<sup>+</sup>, Diabetes, Ischemic Heart Disease, Hypertension, and Congestive Heart Failure.  
<sup>+</sup>Excluding Chloroquine and Hydroxychloroquine

DP: Not disclosed due to data protection restrictions (groups of <5). NA: Not applicable.

**Table 3.** Matched population: Characteristics and ECG findings in subjects taking hydroxychloroquine vs. control. For the ECG findings, adjusted models show effects independent of comorbidities.

<b>Variable</b>	<b>Hydroxy-chloroquine</b>	<b>Control</b>	<b>p</b>		
n	172	1,720			
Age, years	59.8 ± 14.7	59.8 ± 14.6			
Sex, females	120 (70 %)	1,200 (70 %)			
Rheumatoid Arthritis	76 (44 %)	17 (1.0 %)	<0.001		
Systemic Lupus Erythematosus	19 (11 %)	<3 (<0.2 %)			
Sjögren's Syndrome	8 (4.7 %)	4 (0.2 %)			
Use of QT-prolonging drug <sup>+</sup>	16 (9 %)	95 (6 %)	0.04		
Hypertension	82 (48 %)	403 (23 %)	<0.001		
Ischemic Heart Disease	31 (18 %)	112 (7 %)	<0.001		
Congestive Heart Failure	12 (7 %)	29 (1.7 %)	<0.001		
Diabetes Mellitus	26 (15 %)	141 (8 %)	0.002		
<b>ECG variables</b>	<b>Hydroxy-chloroquine</b>	<b>Control</b>	<b>p</b>	<b>Model 2* Δ/OR</b>	<b>Model 3<sup>§</sup> Δ/OR</b>
Heart rate, bpm	73.9 ± 14.3	72.5 ± 14.4	0.2	2.3 [-0.7;5.3], p=0.13	2.5 [-0.6;5.5], p=0.11
QTcB, ms	438 ± 26	432 ± 27	0.002	5.7 [0.2;11], p=0.04	3.9 [-1.6;9.5], p=0.16
QTcFrh, ms	424 ± 22	419 ± 20	0.002	3.1 [-1.1;7.3], p=0.15	1.3 [-2.9;5.6], p=0.5
QTcB > 500 ms	4 (2.3 %)	22 (1.3 %)		Too few cases	Too few cases
JTc, ms	323 ± 20	322 ± 21	0.5	-1.3	-1.1

				[-5.5;2.8], p=0.5	[-5.3;3.1], p=0.6
PR interval, ms	161 ± 27	160 ± 25	0.6	4.6 [-0.3;9.5], p=0.07	3.2 [-1.8;8.2], p=0.2
QRS duration, ms	96 ± 16	92 ± 14	0.004	3.5 [0.6;6.3], p=0.02	1.4 [-1.4;4.2], p=0.3
RBBB	6 (3.3 %)	26 (1.5 %)	0.06	2.5 [0.7;9], p=0.17	1.9 [0.5;7], p=0.4
LBBB	<3	9 (0.5 %)		Too few cases	Too few cases
<p>*Adjusted for sex, age, Rheumatoid Arthritis, Systemic Lupus Erythematosus, Sjögren's Syndrome, and QT-prolonging drugs<sup>‡</sup>. <sup>§</sup>Adjusted for sex, age, Rheumatoid Arthritis, Systemic Lupus Erythematosus, Sjögren's Syndrome, QT-prolonging drugs<sup>‡</sup>, Diabetes, Ischemic Heart Disease, Hypertension, and Congestive Heart Failure. <sup>†</sup>Excluding Chloroquine and Hydroxychloroquine  DP: Not disclosed due to data protection restrictions (groups of &lt;5).</p>					

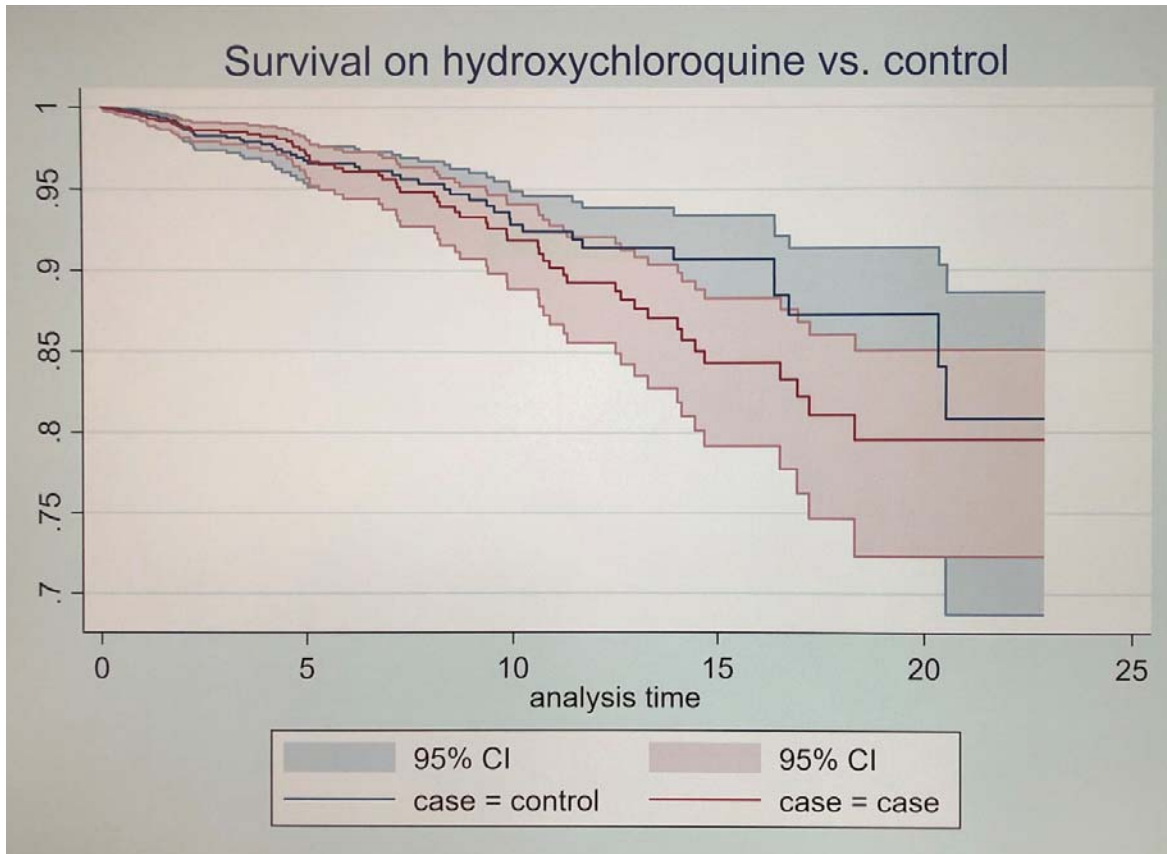
**Table 4.** Mortality population: Baseline characteristics and mortality in subjects taking hydroxychloroquine compared to sex- and age-matched controls.

<b>Variable</b>	<b>Hydroxychloroquine</b>	<b>Control</b>	<b>p</b>
n	3,368	3,368	
Age, years	53.1 ± 15.9	53.1 ± 15.9	
Sex, females	2,419 (72 %)	2,419 (72 %)	
Rheumatoid Arthritis	967 (29 %)	32 (1.0 %)	<0.001
Systemic Lupus Erythematosus	148 (4 %)	3 (0.9 %)	
Sjögren's Syndrome	116 (3 %)	9 (0.3 %)	<0.001
QT-prolonging drugs*	274 (8 %)	150 (4 %)	<0.001
QT-prolonging antibiotics	116 (3.4 %)	11 (0.3 %)	<0.001
QT-prolonging antidepressants	116 (3.4 %)	102 (3.0 %)	0.3
Hypertension	793 (24 %)	686 (20 %)	0.002
Ischemic Heart Disease	302 (9 %)	207 (6 %)	<0.001
Congestive Heart Failure	59 (1.8 %)	29 (0.9 %)	0.001
Diabetes Mellitus	219 (6.5 %)	222 (6.6 %)	0.9
<b>Risk of mortality, HR</b>	<b>Hydroxychloroquine</b>	<b>Control</b>	<b>p</b>
Number of events	73 (2.2 %)	56 (1.7 %)	
Adjusted for sex and age	1.20 (0.85-1.71)	1	0.3
Adjusted for sex, age, RA, SLE, SS, and QT-prolonging drugs*	0.80 (0.51-1.26)	1	0.3
Adjusted for sex, age, RA, SLE, SS, QT-prolonging drugs*, HTN, IHD, CHF, DM	0.79 (0.50-1.24)	1	0.3
*Excluding chloroquine and hydroxychloroquine. Some statistics not disclosed due to data protection restrictions (groups of <5). RA, Rheumatoid Arthritis; SLE, Systemic Lupus Erythematosus; SS, Sjögren's Syndrome; HTN, Hypertension; IHD, Ischemic Heart Disease; CHF, Congestive Heart Failure; DM, Diabetes Mellitus.			



## FIGURES

**Figure 1.** Survival for people on hydroxychloroquine and matched controls.



## Supplemental material for

### **Chloroquine, but not hydroxychloroquine prolongs the QT interval in a primary care population.**

Jonas L. Isaksen, Anders G. Holst, Adrian Pietersen, Jonas B. Nielsen, Claus Graff, Jørgen K. Kanters

#### **Supplemental methods**

Use of Chloroquine was defined when a prescription for Chloroquine (ATC code: P01BA01) was claimed.

Use of Hydroxychloroquine was defined in the same way using ATC code P01BA02.

Systemic Lupus Erythematosus was defined as any of the ICD-10 codes DM32, DG058A, DG737C, DI328B, DI398C, DJ991C, or DN085A, or either ICD-8 code 695.4 or 734.1.

Rheumatoid Arthritis was defined as any of the ICD-10 codes DM05 or DM06, or any of the ICD-8 codes 712.0, 712.1, or 712.3.

Ischemic heart disease was defined as any of the ICD-10 codes I20, I21, I23, I24, I25 or the ICD-8 code 410.

Diabetes mellitus was defined as any of the ICD-10 codes E10, E11, E12, E13 or E14, or use of insulin (ATC: A10A) or oral antidiabetics (ATC: A10B), or the ICD-8 code 761.1.

Hypertension was present if any of the ICD-10 codes I10 or I15, or the ICD-8 code 401 was found, or if we found concurrent use of two of these classes of medication: alpha blockers (ATC: C02A, C02B, C02C), non-loop diuretics (ATC: C02L, C03A, C03B, C03D, C03E, C03X, C07X, C07C, C07D, C08G, C02DA, C09BA, C09DA, C09XA52), vasodilators (ATC: C02DB, C02DD, C02DG, C04, C05), beta blockers (ATC: C07), calcium blockers (ATC: C08, C09BB, C09DB), or angiotensin converting enzyme inhibitors (ATC: C09).

Heart failure was present if the ICD-10 codes I42, I50, or J81, or the ICD-8 code 427.0 was found, or if a prescription of loop diuretics (ATC: C03C) was found.

The following drugs and ATC codes were considered QT-prolonging in the present study. The list was taken from CredibleMeds.org on April 30, 2020 (revision March 19, 2020), and is comprised of those drugs categorized as having a known risk of Torsade de Pointes (TdP), with the omissions of Chloroquine and Hydroxychloroquine.

<b>Generic drug name</b>	<b>ATC code(s)</b>
Aclarubicin	L01DB04
Amiodarone	C01BD01
Anagrelide	L01XX35
Arsenic trioxide	L01XX27
Astemizole	R06AX11

Azithromycin	J01FA10, S01AA26, J01RA07
Bepriidil	C08EA02
Cesium Chloride	No ATC available
Chlorpromazine	N05AA01
Chlorprothixene	N05AF03
Cilostazol	B01AC23
Ciprofloxacin	J01MA02, S01AE03, S02AA15, S03AA07, J01RA10, J01RA11, J01RA12
Cisapride	A03FA02
Citalopram	N06AB04
Clarithromycin	J01FA09, A02BD04, A02BD05, A02BD06, A02BD07, A02BD09, A02BD11
Cocaine	N01BC01, R02AD03, S01HA01, S02DA02
Disopyramide	C01BA03
Dofetilide	C01BD04
Domperidone	A03FA03
Donepezil	N06DA02, N06DA52, N06DA53
Dronedarone	C01BD07
Droperidol	N05AD08
Erythromycin	D10AF02, J01FA01, S01AA17, D10AF52
Escitalopram	N06AB10
Flecainide	C01BC04
Fluconazole	D01AC15, J02AC01
Gatifloxacin	J01MA16, S01AE06
Grepafloxacin	J01MA11
Halofantrine	P01BX01
Haloperidol	N05AD01
Hydroquinidine	C01BA13
Ibogaine	No ATC available
Ibutilide	C01DB05
Levofloxacin	A02BD10, J01MA12, S01AE05, J01RA05
Levomepromazine	N05AA02
Levomethadyl acetate	N07BC03
Levosulpride	N05AL07
Mesoridazine	N05AC03
Methadone	N07BC02, N02AC52
Moxifloxacin	J01MA14, S01AE07
Nifekalant	Not marketed in Denmark
Ondansetron	A04AA01
Oxaliplatin	L01XA03
Papaverine HCl	A03AD01, G04BE02, G04BE52
Pentamidine	P01CX01
Pimozide	N05AG02
Probucol	C10AX02
Procainamide	C01BA02
Propofol	N01AX10
Quinidine	C01BA01, C01BA51, C01BA71
Roxithromycin	J01FA06

Sevoflurane	N01AB08
Sotalol	C07AA07, C07FX02, C07BA07
Sparfloxacin	J01MA09
Sulpride	N05AL01
Sultopride	N05AL02
Terfenadine	R06AX12
Terlipressin	H01BA04
Terodiline	G04BD05
Thioridazine	N05AC02
Vandetanib	L01XE12

## Supplementary Tables

**Supplementary Table 1.** Characteristics and ECG findings in people with Rheumatoid Arthritis.

Variable	Rheumatoid Arthritis	Control	p		
n	6,329	6,329			
Age, years	64.2 ± 15.6	64.2 ± 15.6			
Sex, females	4,766 (75%)	4,766 (75%)			
Systemic Lupus Erythematosus	102 (1.6 %)	7 (0.1 %)	<0.001		
Sjögren's Syndrome	144 (2.3 %)	22 (0.4 %)	<0.001		
Use of QT-prolonging drugs <sup>#</sup>	619 (9.8 %)	414 (6.5 %)	<0.001		
Hypertension	2,436 (38 %)	1,816 (29 %)	<0.001		
Ischemic Heart Disease	902 (14 %)	531 (9 %)	<0.001		
Congestive Heart Failure	370 (5.9 %)	186 (2.7 %)	<0.001		
Diabetes Mellitus	775 (12 %)	443 (7 %)	<0.001		
ECG variables	Rheumatoid Arthritis	Control	p	Model 2* Δ/OR	Model 3 <sup>s</sup> Δ/OR
Heart rate, bpm	73.6 ± 14.4	73.0 ± 14.2	0.01	0.6 [0.1;1.1], p=0.01	0.6 [0.1;1.1], p=0.02
QTcB, ms	434 ± 27	433 ± 27	0.07	0.6 [-0.3;1.5], p=0.2	-0.2 [-1.1;0.8], p=0.7
QTcFrh, ms	420 ± 22	420 ± 22	0.4	0.1 [-0.7;0.9], p=0.8	-0.6 [-1.4;0.2], p=0.13
QTcB > 500 ms	97 (1.5 %)	96 (1.5 %)	0.9	1.0 [0.7;1.3], p=0.9	0.8 [0.6;1.1], p=0.2
JTc, ms	322 ± 23	322 ± 22	0.7	-0.1 [-0.8;0.7], p=0.8	-0.1 [-0.9;0.6], p=0.7
PR interval, ms	162 ± 27	161 ± 27	0.4	0.4 [-0.5;1.3], p=0.4	-0.4 [-1.3;0.5], p=0.4
QRS duration, ms	93 ± 16	93 ± 16	0.2	-0.1 [-0.6;0.4], p=0.7	-0.8 [-1.2;-0.2], p=0.01

RBBB	141 (2.2 %)	133 (2.1 %)	0.6	1.1 [0.8;1.4], p=0.6	1.0 [0.8;1.3], p=0.9
LBBB	45 (0.7 %)	60 (1.0 %)	0.14	0.8 [0.5;1.1], p=0.19	0.7 [0.5;1.1], p=0.09
<p><sup>#</sup>Except Chloroquine and Hydroxychloroquine. <sup>*</sup>Adjusted for sex, age, Sjögren's Syndrome, Systemic Lupus Erythematosus, and QT-prolonging drugs<sup>#</sup>. <sup>§</sup>Adjusted for sex, age, Sjögren's Syndrome, Systemic Lupus Erythematosus, Diabetes, Ischemic Heart Disease, Hypertension, and Congestive Heart Failure.</p>					

**Supplementary Table 2.** Characteristics and ECG findings in people with Systemic Lupus Erythematosus

<b>Variable</b>	<b>Systemic Lupus Erythematosus</b>	<b>Control</b>	<b>p</b>		
n	540	1,620			
Age, years	56.4 ± 15.0	56.4 ± 15.0			
Sex, females	465 (86%)	1,395 (86 %)			
Rheumatoid Arthritis	97 (18 %)	18 (1.1 %)	<0.001		
Sjögren's Syndrome	<3	9 (0.6 %)			
Use of QT-prolonging drugs <sup>#</sup>	54 (10 %)	96 (5.9 %)	0.001		
Hypertension	192 (36 %)	355 (22 %)	<0.001		
Ischemic Heart Disease	71 (13 %)	109 (7 %)	<0.001		
Congestive Heart Failure	23 (4.3 %)	29 (1.8 %)	0.001		
Diabetes Mellitus	40 (7.4 %)	85 (5.3 %)	0.06		
<b>ECG variables</b>	<b>Systemic Lupus Erythematosus</b>	<b>Control</b>	<b>p</b>	<b>Model 2* Δ/OR</b>	<b>Model 3<sup>s</sup> Δ/OR</b>
Heart rate, bpm	73.4 ± 14.1	71.8 ± 13.0	0.02	1.3 [-0.1;2.6], p=0.06	1.3 [-0.1;2.6], p=0.07
QTcB, ms	433 ± 24	431 ± 25	0.08	2.0 [-0.5;4.5], p=0.11	1.1 [-1.4;3.6], p=0.4
QTcFrh, ms	420 ± 19	419 ± 20	0.5	0.7 [-1.3;2.7], p=0.5	-0.1 [-2.1;1.9], p=0.9
QTcB > 500 ms	3 (0.6 %)	11 (0.7 %)		Too few cases	Too few cases
JTc, ms	324 ± 20	324 ± 21	0.9	0.4 [-1.6;2.4], p=0.7	0.1 [-2.0;2.2], p=0.9
PR interval, ms	158 ± 24	157 ± 25	0.6	1.2 [-1.4;3.7], p=0.4	0.4 [-2.2;3.0], p=0.8
QRS duration, ms	90 ± 13	90 ± 12	1.0	-0.2 [-1.4;1.1], p=0.8	-0.7 [-1.9;0.5], p=0.3

RBBB	4 (0.7 %)	14 (0.9 %)		Too few cases	Too few cases
LBBB	<3	9 (0.6 %)		Too few cases	Too few cases
<sup>#</sup> Except Chloroquine and Hydroxychloroquine. <sup>*</sup> Adjusted for sex, age, Rheumatoid Arthritis, Sjögren's Syndrome, and QT-prolonging drugs <sup>#</sup> . <sup>§</sup> Adjusted for sex, age, Rheumatoid Arthritis, Sjögren's Syndrome, QT-prolonging drugs <sup>#</sup> , Diabetes, Ischemic Heart Disease, Hypertension, and Congestive Heart Failure. DP: Not disclosed due to data protection restrictions (groups of <5).					



**Supplementary Table 3.** Characteristics and ECG findings in people with Sjögren's Syndrome

Variable	Sjögren's Syndrome	Control	p		
n	1,174	2,348			
Age, years	64.3 ± 14.1	64.3 ± 14.1			
Sex, females	1,042 (89%)	2,084 (89%)			
Rheumatoid Arthritis	168 (14 %)	41 (1.8 %)	<0.001		
Systemic Lupus Erythematosus	54 (4.6 %)	6 (0.3 %)	<0.001		
Use of QT-prolonging drugs <sup>#</sup>	132 (11 %)	151 (6.4 %)	<0.001		
Hypertension	467 (40 %)	677 (29 %)	<0.001		
Ischemic Heart Disease	184 (16 %)	198 (8.4 %)	<0.001		
Congestive Heart Failure	46 (3.9 %)	67 (2.9 %)	0.09		
Diabetes Mellitus	116 (9.9%)	170 (7.2 %)	0.007		
ECG variables	Sjögren's Syndrome	Control	p	Model 2* Δ/OR	Model 3 <sup>§</sup> Δ/OR
Heart rate, bpm	72.3 ± 13.4	73.3 ± 13.7	0.04	-1.3 [-2.3;-0.3], p=0.009	-1.2 [-2.2;-0.2], p=0.01
QTcB, ms	433 ± 26	433 ± 26	0.4	-1.1 [-3.0;0.7], p=0.2	-1.6 [-3.4;0.3], p=0.10
QTcFrh, ms	421 ± 21	420 ± 21	0.6	0.2 [-1.3;1.7], p=0.8	-0.3 [-1.8;1.3], p=0.7
QTcB > 500 ms	8 (0.7 %)	30 (1.3 %)	0.11	0.6 [0.3;1.2], p=0.16	0.5 [0.2;1.1], p=0.09
JTc, ms	325 ± 22	323 ± 21	0.16	0.9 [-0.7;2.4], p=0.3	0.7 [-0.8;2.3], p=0.4
PR interval, ms	162 ± 25	160 ± 26	0.02	2.0 [0.2;3.9], p=0.03	1.2 [-0.6;3.1], p=0.20
QRS duration, ms	91 ± 15	91 ± 14	0.5	-0.1 [-1.2;0.9], p=0.8	-0.5 [-1.5;0.5], p=0.3

RBBB	24 (2.0 %)	37 (1.6 %)	0.3	1.3 [0.8;2.2], p=0.3	1.2 [0.7;2.1], p=0.5
LBBB	9 (0.8 %)	25 (1.1 %)	0.4	0.7 [0.3;1.6], p=0.5	0.7 [0.3;1.6], p=0.4
<p>#Except Chloroquine and Hydroxychloroquine. *Adjusted for sex, age, Rheumatoid Arthritis, Systemic Lupus Erythematosus and QT-prolonging drugs#. §Adjusted for sex, age, Rheumatoid Arthritis, Systemic Lupus Erythematosus, QT-prolonging drugs#, Diabetes, Ischemic Heart Disease, Hypertension, and Congestive Heart Failure.</p>					