

Dimensions and modulators of behavioural and mental-health change during the Covid-19 pandemic

Adam Hampshire 1*, Peter Hellyer 1 2, Eyal Soreq 1, Mitul A. Mehta 2, Konstantinos Ioannidis 3 4, William Trender 1, Jon E. Grant 5, Samuel R. Chamberlain 3 4

1. Imperial College London 2. King's College London 3. Cambridgeshire and Peterborough NHS Foundation Trust. 4. Department of Psychiatry, University of Cambridge, UK. 5. Department of Psychiatry, University of Chicago, USA.

*Corresponding author a.hampshire@imperial.ac.uk 0207 594 7993

How has the Covid-19 pandemic affected mental health? What are the most common positives and negatives? How do population variables mediate the impact on mood and behaviour? Who is most at risk of adverse consequences? Which pragmatic measures can help? We address these questions in a data-driven manner by applying multivariate, machine-learning and natural-language processing methods to a survey database collected from 376,987 members of the general public. We report that small average changes in mood from pre- to mid-pandemic obfuscate substantial consequences, both positive and negative, for people from particular sub-populations, vocations, circumstances and personality profiles. The coping strategies that people find helpful during the pandemic are correspondingly diverse yet predictable. We propose that by combining psychological, and demographic variables, it is possible to identify individuals who are at most risk of adverse consequences and to extract individually tailored advice from the collective lived experiences of the general population.

Key words: pandemic, coronavirus, Covid-19, mental health, wellbeing, mood, impulsive, compulsive, predictors, population.

NOTE: This preprint reports new research that has not been certified by peer review and should not be used to guide clinical practice.

Introduction

The coronavirus disease 2019 (Covid-19) pandemic has brought about unprecedented change in peoples' lives due to direct and indirect consequences of the illness, physical distancing and socio-economic restructuring. These changes are likely to have affected mood, anxiety, other aspects of mental health and behaviour in widespread, profound but idiosyncratic ways.¹ Expert groups have posited that the impact on well-being is likely to relate to a variety of factors including (i) aspects of demographics such as age or ethnicity, (ii) social networks, (iii) financial/occupational circumstances (iv), being shielded or having carer responsibilities, (v) pre-existing mental health symptoms, (vi) maladaptive online technology use, (vii) personality traits and (viii) tendency towards compulsive behaviours.²⁻⁴

Urgent calls have been made to study these relationships because they are critical to inform policy and healthcare decisions, and to guide researchers and clinicians; however, to date, there is little published information. Indeed, knowledge about how pandemics affect mental health (including Covid-19) is limited, with many studies focusing on small rarefied samples, not examining temporal dynamics of change pre- to post-lockdown,⁵ nor integrating the diverse psycho-socio-economic variables that are relevant.⁶

More generally, addressing these knowledge gaps during the pandemic provides a unique opportunity to understand the nature and psychological basis of mental health resilience and vulnerability in the general population. It also presents a major methodological-statistical challenge. Specifically, there is likely to be a many-to-many mapping relationship between the ways that people have been affected by the pandemic and their psycho-socio-economic profiles. Furthermore, many of the relevant variables, for example psychiatric traits and technology use behaviours, will tend to covary. Moreover, it is not altogether clear what the major dimensions of the impact are, or which coping measures can help. In such a context, identifying, disentangling and mapping the key variables can only be achieved in a data-driven multivariate manner, which in turn necessitates the collection and analysis of largescale population data.

To address this challenge, we applied a combination of multivariate, machine learning, and natural-language processing methods to analyse a unique large-scale dataset, comprising a survey of mental health and wellbeing variables completed by 376,987 people, collected since late December 2019 and focused on January and May 2020, in collaboration with BBC2

Horizon, predominantly within the UK. Within this broader database were responses to a comprehensive questionnaire instrument capturing self-reported pandemic-impact in 74,830 out of 110,118 respondents in May, and free text from ~50,000 respondents stating in their own words the main positive and negative consequences of the pandemic, and what they had found helpful and would recommend to others to maintain health and well-being during this time.

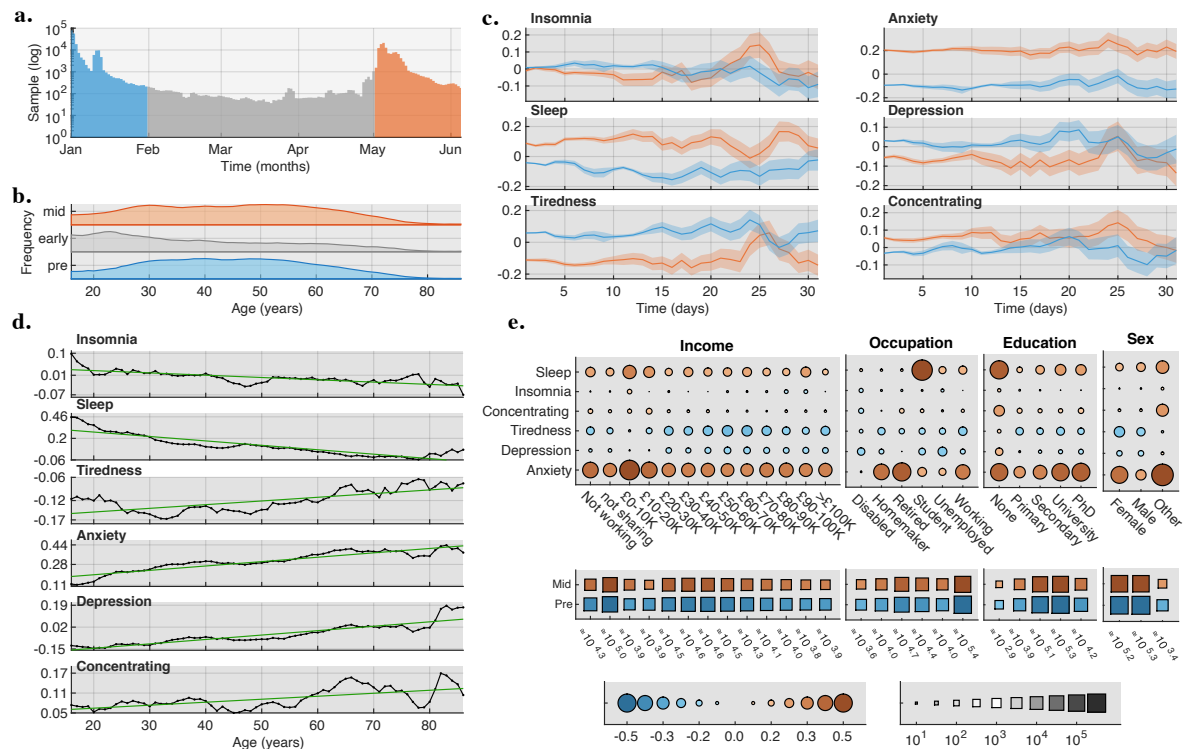
We first sought to confirm whether there were global differences in the population distributions of depression, anxiety, and sleep problems between January, just prior to the Covid-19 outbreak reaching the UK, and May, during peak lockdown. Next, we estimated in a data-driven manner the dimensionality of self-perceived impact of the pandemic during May. We then identified the major predictors for each impact dimension, in terms of sociodemographic, economic and individual-circumstance variables (e.g., work and home arrangements), pre-existing mental and neurologic disorders, personality and psychiatric traits, and technology use. Finally, we analysed free text data to determine the diversity of strategies that people most commonly reported helped them to cope during the pandemic, characterise those topics, and then explore the potential to generate individually tailored advice by mapping the covariance between topic prevalence and the population variables in a multivariate manner.

Results

Respondents

Starting from December 26th 2019, participants were recruited to the study website, where they completed cognitive tests and a detailed questionnaire (**Supplement 1**). Articles describing the study appeared on the BBC2 Horizon page, BBC Home page, BBC News Home page and circulated on mobile news meta-apps from January 1st 2020. A second promotional drive was launched on May 2nd 2020, aligned with a BBC2 Horizon Documentary focused on concurrently collected cognitive data, analysis of which is outside the scope of the current article. This produced two large peaks in data collection after the January (pre-pandemic N= 225,437) and May (mid-pandemic N= 122,680) launches, with more minimal data (Early-pandemic 9,610) in the intervening period. Participants aged under 16 were excluded prior to analysis because they were presented with an abbreviated questionnaire. Also, as a quality control people who completed the questionnaire too rapidly (defined as under 6 minutes) were excluded. This resulted in 215,886 Pre-pandemic, 8,680 Early-pandemic and 110,118 Mid-pandemic datasets in the reported analyses (**Figure 1a**).

Figure 1. Sociodemographic mediated differences in national mood scores during the Pre- and Mid-Pandemic epochs



1a. Data were collected throughout the first 5 months of 2020. Sampling was concentrated in early January and early May, when BBC2 Horizon, News and Homepage promoted the study. **1b.** Sociodemographic distributions, including age, were closely matched Pre-Pandemic (January) and Mid-Pandemic (May). Early-Pandemic (February-April) was more sparsely sampled and captured people from a different age distribution. **1c.** Daily mean with SEM mood scores of the population, calculated separately for each of the 31 days post promotion launches Mid-Pandemic and Pre-Pandemic. Age, gender, handedness, first language, country of residence occupational status, and earnings are factored out. Significantly scaled differences are reproducibly evident across the days, most notably increased prevalence of mood-anxiety, but also improved sleep and tiredness scores. **1d.** Differences in mean mood scores Mid-Pandemic minus Pre-Pandemic related to age. Older adults had a greater increase in anxiety. Younger adults increased sleep. Younger adults were less depressed whereas older adults were more depressed. **1e.** Sub-population counts (middle squares - size represents log N per sub population) and the corresponding scale/valence of mood-score change (upper circles - size represents SD units and colour direction of change). Substantial differences were evident as a function of sociodemographic sub-groups, with heightened anxiety particularly in retired people, workers, homemakers, low income earners, and for gender Other vs Female vs Male.

Plotting sociodemographic distributions for each of the three epochs (**Figure 1b&e**) showed high correspondence in sociodemographic distributions including sex, handedness, first language, ethnicity and education level. However, the more sparsely sampled early-pandemic epoch age distribution had a marked skew towards younger age, likely a consequence of reduced visibility within the public eye at that time. The other two epochs captured a broad and inclusive cross section of the population, with >100 participants per age year up to and including 85. Participants above this age were combined into an 86+ category. ~15% indicated that they were from minority ethnic groups. There were 161,916 female, 187,622

male and 3,026 indicating other (i.e. non-binary) gender. This demonstrated appropriate representation of minority groups in the dataset.

Differences in the population distributions of mood scores Pre-vs Mid-Pandemic

Differences in mood assessment scores were calculated for the densely sampled and closely matched Mid vs Pre-Pandemic epochs after factoring out age, sex, handedness, education level, first language, country of residence, occupational status and income. Six mental health measures were calculated and compared separately for people who were sampled at each of 31 days post launch, effectively providing 31 independent replication analyses (**Figure 1c**). When analysing large-scale data, very small effects will tend to have highly significant statistical values. Therefore, the better measure of significance is effect size. Here, the mean differences in mental health measures were generally in the small effect size range. The most reliable difference during the Mid-pandemic vs. Pre-pandemic epochs was for anxiety, the incidence of which increased on average by ~ 0.3 standard deviation units (SDs), with this result reliably evident in all 31 analyses. Depression decreased on average by ~ 0.08 SDs, an effect that was only evident in the more densely sampled timeframe just post launch. A decrease in tiredness was evident for almost all days, with an average difference of ~ 0.16 SDs. Problems concentrating increased marginally ~ 0.07 SDs. Problems with insomnia stayed approximately the same; however, mean reported hours slept per night increased ~ 0.19 SDs.

General Linear Models (GLMs) with interaction terms showed that these small but robust overall differences in mental health measures were amplified in select sociodemographic sub-populations (**Figure 1d-e**). Older adults showed the greatest increase in anxiety incidence, (0.4 - 0.5 SD for 60-80-year-olds). Increases in depression was lower for younger adults and higher for older adults (-0.2 SDs to 0.1 SDs). Females (0.32 SDs) had a greater increase in anxiety than Males (0.21 SDs) but less than those identifying their gender as Other (0.38 SDs). Vocationally, increased anxiety incidence was greater for retired people (0.38 SDs), followed by homemakers (0.32 SDs) and workers (0.29 SDs). People who identified gender as Other reported the greatest increase in problems concentrating (0.22 SDs).

Self-perceived pandemic impact and the PD-GIS-11 scale

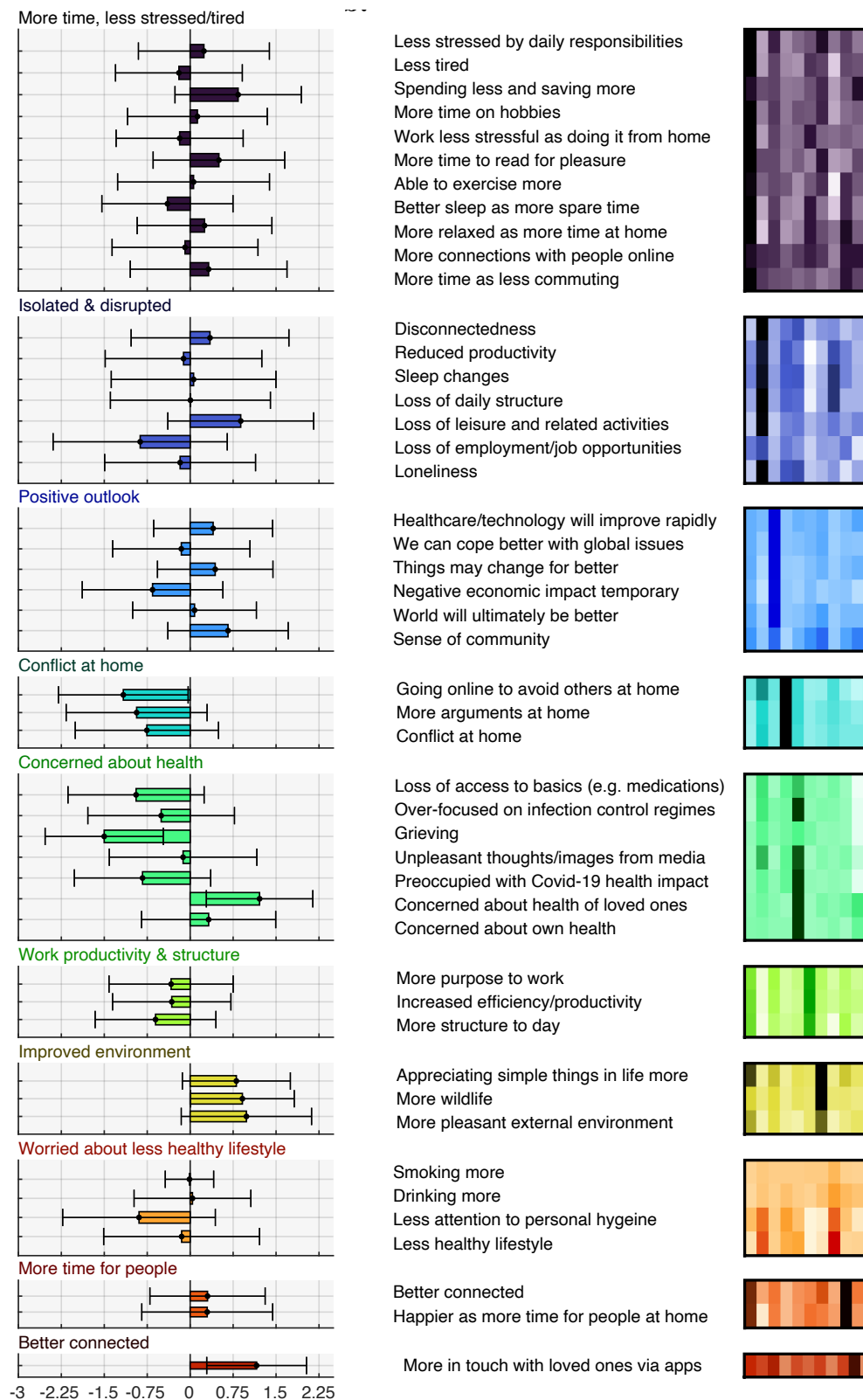
The results of the cross-epoch analyses provided initial evidence that there might be disproportionate pandemic effects on the above-noted aspects of mental health for some

people. A limitation though was that any finer grained behavioural basis to the pandemic impact could not be elucidated from the mood questionnaire alone. Consequently, in May, the online questionnaire was extended with the PanDemic General Impact Scale (PD-GIS-11), designed to probe self-perceived impact of the pandemic on day-to-day life.

Analysis of responses to individual items of the Pandemic General Impact Scale (PD-GIS-11) for 74,830 people showed strong overall agree/disagree biases for a subset of positive and negative statements (**Figure 2**). Some of the strongest agreement was with positive statements, e.g., improved natural environment, enjoying the simpler things in life, spending less money, saving more money, and a greater sense of community. Amongst the strongest agreement with negative statements was concern for health of loved ones, which notably, was higher than concern about one's own health, and loss of leisure/health activities. The strongest disagreement was with statements regarding loss of employment, increased conflict at home, preoccupation with infection and loss of access to basics. There was strong agreement that technology/science/healthcare would advance more rapidly and that things would change but not necessarily for the worse, but strong disagreement that economic impact would be temporary. People agreed that communication apps helped stay in touch with loved ones. These measures of overall agreement were contextualised by substantial population variability. Together, these results indicate that people were affected in very different ways, and not all of them negative.

Principal component analysis (**Supplement 2**) was conducted on the PD-GIS-11 with varimax rotation. Application of the Kaiser convention of including components with eigenvalues > 1 indicated 11 orthogonal dimensions, further supporting the view that people were affected in different ways. The component capturing the most variance (1) had heavy loadings for questions pertaining to positive perception of more free time, less stress and reduced tiredness. The next largest component (2) represented questions pertaining to loneliness and disruption of normal life. Subsequent factors represented (3) positive outlook; (4) increased conflict at home; (5) increased health obsession; (6) increased work engagement/efficiency; (7) improved environment; (8) concern about unhealthier lifestyle; (9) time for people; (10) connectedness; and (11) better sleep (**Figure 2**).

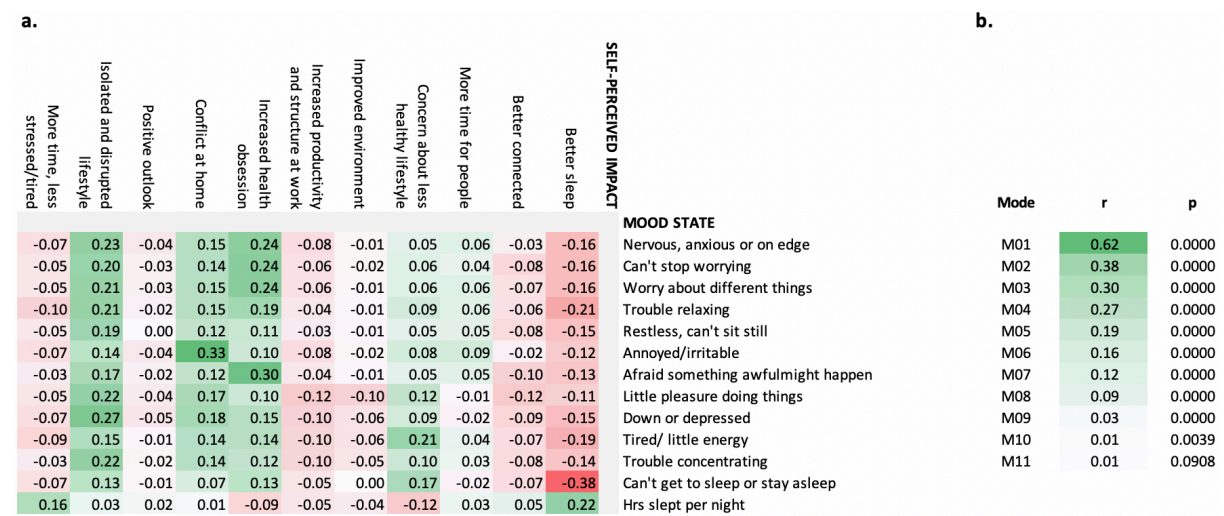
Figure 2. Individual item analysis and principal component analysis for the PD-GIS-11



Left. Strength of agreement with statements about pandemic impact. X scale is in SD units. **Right.** PCA identified 11 components underlying PD-GIS-11 responses (**Supplement 3**). These were labelled 1: positive perception of more free time, less stress and reduced tiredness. 2: loneliness/ disruption. 3: positive outlook. 4: increased conflict at home. 5: increased health obsession. 6: increased work engagement/efficiency. 7: improved environment. 8: concern about unhealthier lifestyle. 9: time for people. 10: connectedness. 11 Better sleep.

Bivariate cross-correlation of the PD-GIS-11 component scores with the mood self-assessment items demonstrated that self-perceived impact of the pandemic explained a substantial component of variance in the incidence of negative mood symptoms (**Figure 3**). This was primarily the case for the negative-impact sub-scales of the PD-GIS-11. The robustness of this relationship was further corroborated via canonical correlation analysis, which produced 10 statistically significant correlation modes, the largest of which had a canonical r value of 0.62 ($p < 0.001$).

Figure 3. Interrelationship between the PD-GIS-11 sub-scales and mood assessment



a. Pearson's r values for questionnaire scale pairwise correlations. Significant correlations were evident between measures of self-perceived covid-19 pandemic impact, as captured in the PD-GIS-11 sub-scales, and the mood self-assessment items. These were clearly stronger for the negative impact sub-scales. **b.** Canonical correlation analysis confirmed this relationship in a multivariate manner, with 10 statistically significant correlation modes, the largest of which had a canonical r value of 0.62.

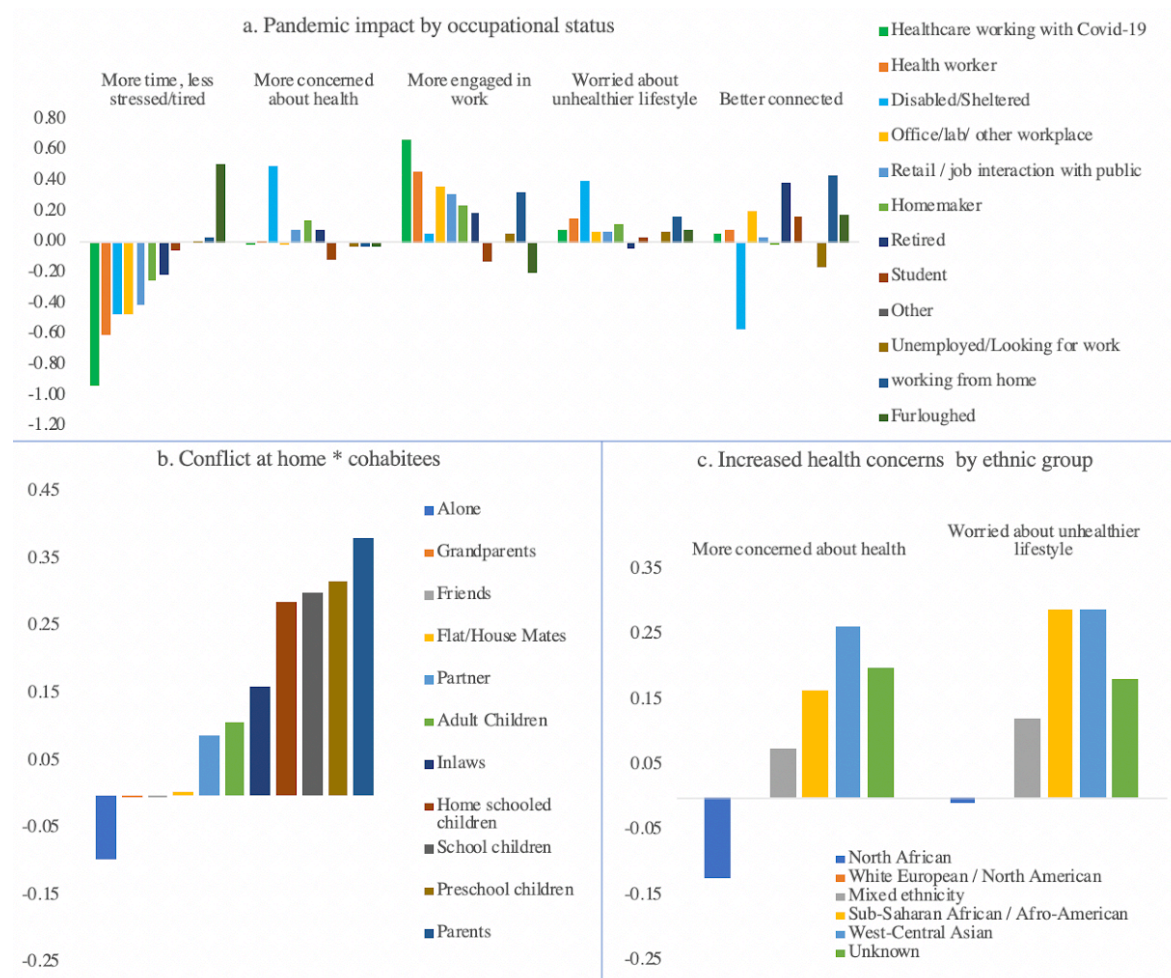
Statistical predictors of self-perceived pandemic impact

Together the above results demonstrated the validity of the PD-GIS-11 scale in providing a multi-dimensional assay of the idiosyncratic ways in which the pandemic affected mood and behaviour in May, during the lockdown. This enabled the central question, regarding how population variables relate to pandemic impact to be addressed.

We first used GLMs to examine the relationships of PD-GIS-11 scores with socio-demographic and economic variables, home context, cohabitants and work arrangements (**Figure 4**). A complex multivariate set of factors were substantially predictive of PD-GIS-11

scores (see **Supplement 3 for full results**). Work arrangements were amongst the most prominent with vocational differences spanning a very large effect size range; for example, health workers, particularly those on the frontline with Covid-19 patients had less time and were less relaxed relative to those who had been furloughed (1.5SDs), but also reported sleeping better (0.34SDs), having greater engagement in work (0.67SDs), and were the most likely to agree that the natural environment had changed for the better (0.25SDs).

Figure 4. Impact of the Covid-19 pandemic as a function of selected demographic variables

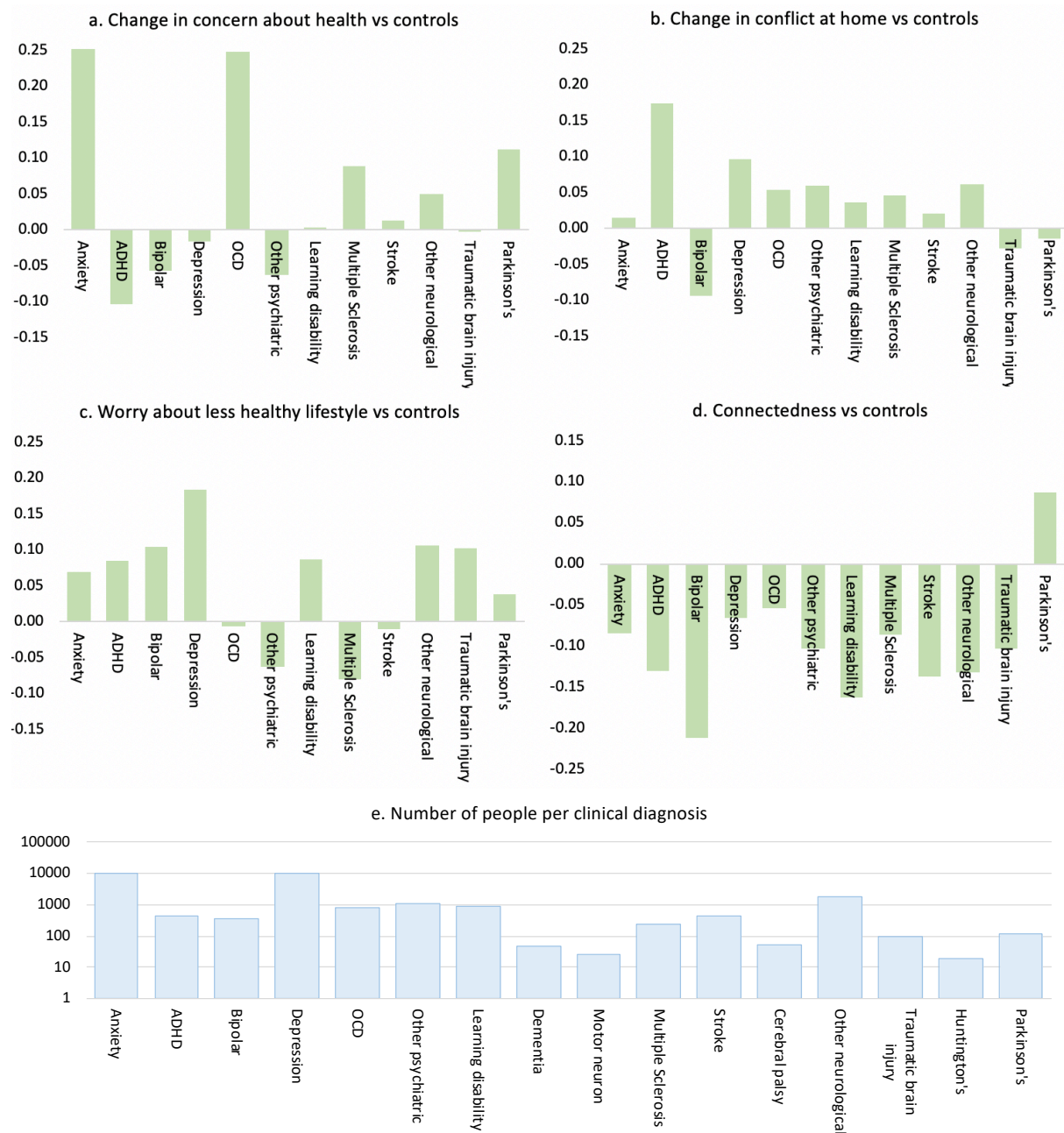


a. There were large and disproportionate impacts of the pandemic on the wellbeing of healthcare workers and disabled/shielded people. **b.** Conflict at home was predicted by type of cohabitees. **c.** Ethnicity predicted increased health concerns. **d.** People with anxiety and obsessive-compulsive disorder (OCD) were disproportionately concerned about health. **e.** People with attentional deficit hyperactivity disorder were more likely to report increased conflict at home. All effects reported in standard deviation units. Full GLM results are in **Supplement 3**.

People whose incomes had been negatively affected reported disproportionate disruption to everyday life (0.45SDs). People identifying as disabled or shielded reported substantially higher health obsession (0.5SDs), were less likely to report better connectedness (-0.57SDs) and were amongst the least likely to report feeling less stressed and having more time (-0.46SDs). The strongest contextual predictors of increased conflict in the home were cohabiting with preschool or school children (0.32SDs & 0.3SDs) or living with parents (0.38SDs)/in-laws (0.16SDs). People who had no, or unpleasant, outside environmental space were less likely to report reduced tiredness/stress than those with relaxing outside space (0.31SDs), were more worried about negative health implications of the lockdown (0.43SDs), and were less likely to report improved natural environment (0.43SDs). People from minority ethnic backgrounds tended to report higher health concerns (0.15-0.30SDs), but also were more likely to have a positive outlook (0.05-0.27SDs). The 8,347 participants who indicated they were looking after vulnerable older adults had higher scores for health obsession (0.17SDs) than the cohort average.

Next, we examined PD-GIS-11 scores for people reporting established diagnoses of different mental health and neurological conditions (**Figure 5 & Supplement 3**) after factoring out the above sociodemographic variables. As expected, depression (10,526) and anxiety (10,525) overlapped heavily in terms of comorbidity (6,305). Relative to the population mean, individuals with anxiety disorder and/or obsessive-compulsive disorder (797) reported greater increases in health obsessions relative to those reporting no conditions (0.25SDs). Those with attention-deficit hyperactivity disorder (ADHD, 449) reported greater increase in conflict at home (0.17SDs), and individuals with depression were more worried about having unhealthier lifestyles (0.18SDs). All clinical groups, apart from people with Parkinson's Disease, did not experience an increase in connectedness during the pandemic to the same extent as people without these disorders (0.05-0.21SDs).

Figure 5. Impact of the Covid-19 pandemic as a function of neurologic and psychiatric conditions

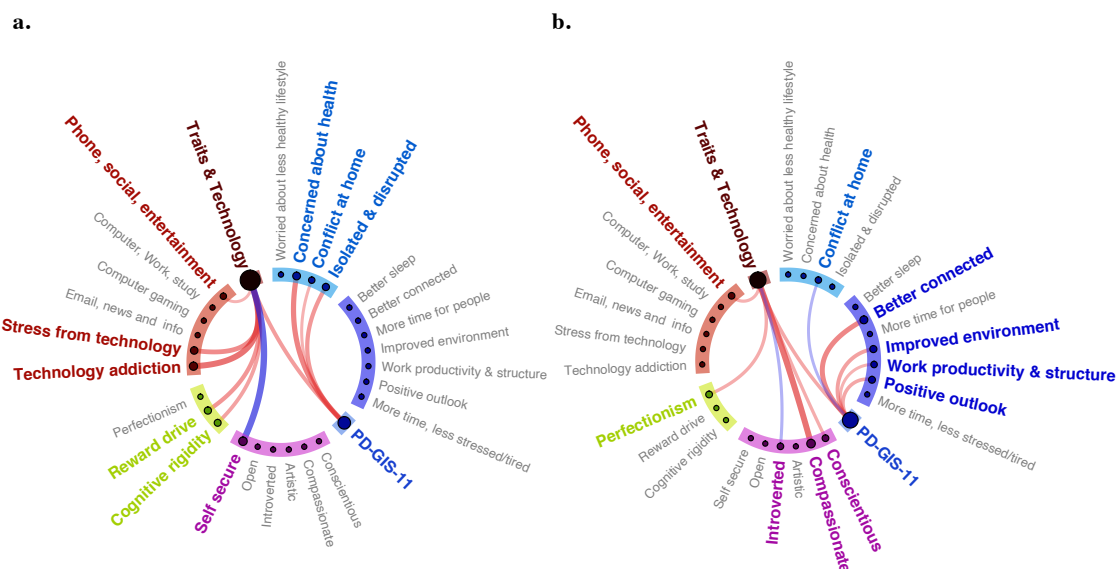


(Y axes for effect sizes in SD units). People who had been diagnosed with pre-existing conditions were more likely to report adverse consequences of the Covid-19 pandemic. **a.** Obsessive compulsive disorder and anxiety were associated with increased concerns about health during the pandemic. **b.** Attention deficit hyperactivity disorder was associated with increased conflict in the home. **c.** People with a history of depression were more likely to report increased concerns about the impact of the pandemic on the healthiness of their lifestyle. **d.** Almost all groups showed reduced connectedness relative to controls, with the exception of people with Parkinson's. **e.** Number of people indicating that they had been diagnosed with pre-existing neurologic and psychiatric conditions.

Finally, canonical correlation analysis was applied to quantify the multivariate associations between online technology use, personality traits, and compulsivity with Covid-19 impact (**Figure 6**) after factoring out sociodemographic variables. There were 11 statistically significant correlation modes. Full analyses are provided in **Supplement 3**. Cross-validation

analysis confirmed the model was not over-fitted, which is to be expected given the very large sample size. Back projecting the first CCA mode (canonical $r=0.41$) onto the PD-GIS-11 showed strong associations with adverse impact, including isolation/disruption ($r=0.44$), increased health obsession ($r=0.58$) and increased conflict at home ($r=0.27$). Back projection on the other side of the first mode showed strong associations with technology addiction ($r=0.67$), stress arising from technology use ($r=0.52$), compulsivity subscale reward drive ($r=0.45$) and cognitive rigidity ($r=0.38$), and negative association with the personality trait ‘self security’ ($r=-0.75$). Back projecting the second mode (canonical $r=0.34$) onto the PD-GIS-11 summarised positive pandemic impact, including better connectedness ($r=0.55$), improved environment ($r=0.39$), positive outlook ($r=0.35$), and greater work engagement ($r=0.27$), with a negative relationship to conflict at home ($r=-0.26$). The other side of the second mode associated positively with the traits compassion ($r=0.69$), conscientiousness ($r=0.31$) and perfectionism ($r=0.32$), and negatively with introversion ($r=-0.28$). Therefore, the self-reported impact of the pandemic was substantially mediated along multiple dimensions by personality traits, compulsivity, and technology use.

Figure 6. Canonical Correlation of Trait and Technology vs PD-GIS-11



Correlation weights of the trait & technology vs PD-GIS-11 canonical variates with each other and their back projections, thresholded at $|r| > 0.25$ (full results in [Supplement 3](#)). **a.** Mode 1 associated negative aspects of pandemic impact with technology stress and addiction, compulsivity traits and insecurity. **b.** Mode 2 associated positive aspects of pandemic impact with positive personality traits and perfectionism, a compulsivity trait. Red lines = positive correlations. Blue lines = negative correlations. Line weight = correlation r values.

Data-driven analysis of common impact and advice topics from free text

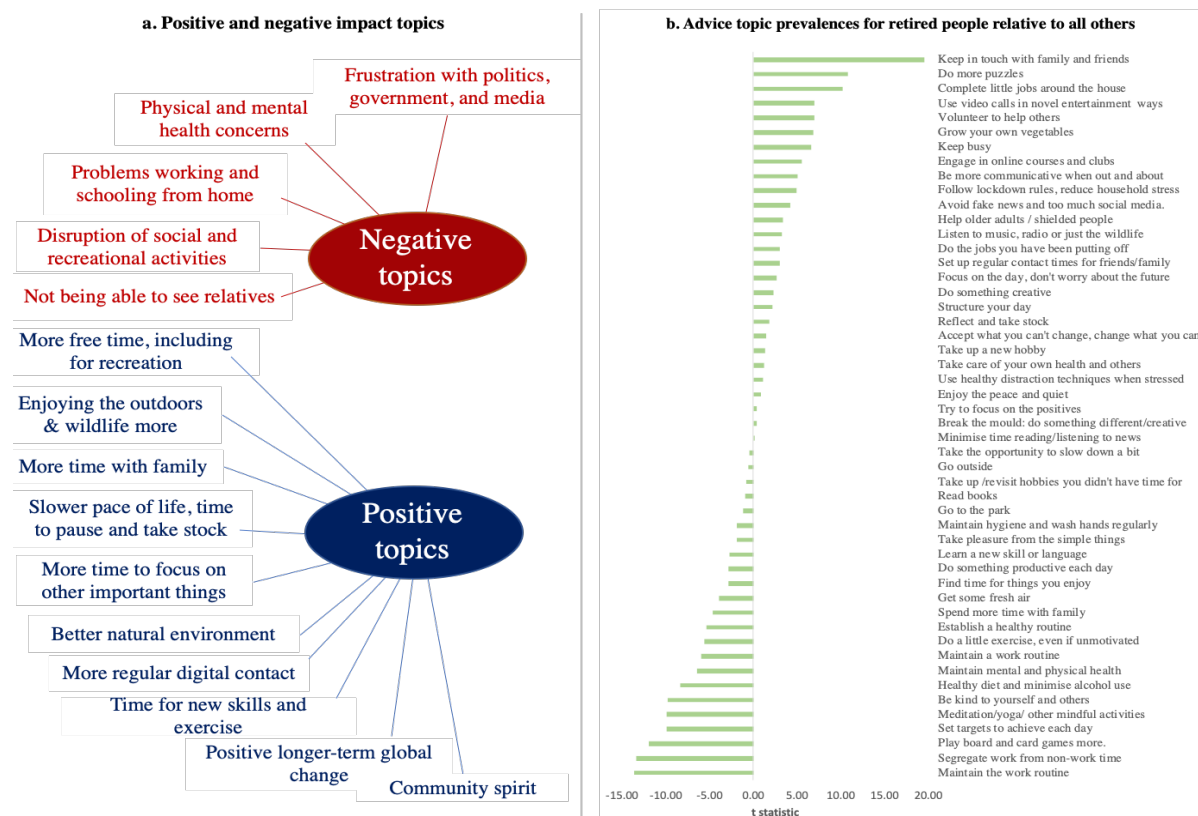
We further examined the dimensionality of pandemic impact through the application of Latent Dirichlet Allocation to free text in response to the questions “What has been most POSITIVE about the lockdown?”, “What has been most NEGATIVE about the lockdown?” This is one of the most established methods for identifying commonly co-occurring combinations of words, which can be used to characterise each document according to the topic mixtures from which it is comprised. This allows the prevalence of the topics to be further examined in relation to population variables of interest.

The best fitted ten exemplars of each topic from the free text are provided in **Supplement 4a**. The optimal number of topics was identified by calculating models at different levels of dimensionality in steps of five and determining the one that produced the lowest perplexity measure. Descriptions of the main negatives from 49,482 participants (**Figure 7a**) were best summarised by just five topics. In prevalence order, these were being unable to see relatives (especially older relatives), impracticalities of working or schooling from home, disruption of social and recreational activities, physical and mental health worries, and frustration with the media or government. Descriptions of the main positives from 48,315 people (**Figure 7a**) were somewhat more diverse, summarised by 10 topics, these being more free/recreational time, improved environment, time for important things, slower pace of life, positive long-term change, more time with family, learning new skills/expertise, more regular digital contact with friends/family, and enjoying the outdoors.

The same approach was then applied to free text responses to the question “What has been most POSITIVE about the lockdown?” Advice from 44,376 people was much more variable, being optimally summarised by ~50 topics. A number of topics fitted within the broader themes of structuring time, keeping occupied, maintaining communication and keeping physically healthy. The most prevalent topic was establishing a healthy routine, followed by using video conferencing to stay in touch, meditation/yoga, regular exercise, time outside, keeping busy, going for regular walks and planning a healthy diet.

When concatenating topic prevalence estimates, there was substantial shared variance between peoples’ topic mixtures and both the mood self-assessment (**Supplement 4b**) and the PD-GIS-11 (**Supplement 4c**), as quantified using canonical correlation analysis. This provided a cross validation of the scales and free text.

Figure 7. Topic modelling of free text responses



a. Latent Dirichlet Allocation (LDA) identified 5 negative topics and 10 positive topics from the free text responses describing the main negative and positive impacts of the Covid-19 pandemic. **b.** LDA identified ~50 topics from free text describing what people would recommend to others based on their lived experiences of the pandemic. The prevalence of the topics varied significantly across sub populations. Above, we present differences in the advice topic prevalence for retired older adults relative to the rest of the cohort.

A key question was whether the coping strategies that people recommended differed for people at greater risk of negative pandemic impact. To address this question, t-tests examined whether the topic prevalence covaried with some of the risk factors identified above (**Supplement 4d**). Some of the largest differences in topic prevalence related to retirement status (**Figure 7b**). Most prominently, retired people were more likely to recommend ‘set up regular time to keep in touch with friends and family’ ($t=19.506$ $p<0.001$) and ‘doing more puzzles’ ($t=10.729$ $p<0.001$) and taking time to complete jobs around the house ($t=10.223$ $p<0.001$). As one would expect, work related topics were less prevalent, including ‘segregate work and non-work time’ ($t=-13.330$ $p<0.001$) and ‘maintain the work routine’ ($t=-13.580$ $p<0.001$).

People whose income had been negatively affected were more likely to recommend ‘go to the park regularly’ ($t=5.196$ $p<0.001$) but less likely to recommend ‘take the opportunity to slow

down a bit' ($t=-7.057$ $p<0.001$). Frontline health workers were more likely to recommend 'maintaining personal hygiene/handwashing' ($t=3.199$ $p=0.001$), and 'segregating work and home time' ($t=3.102$ $p=0.002$). Conversely 'structure your day' ($t=-3.421$ $p=0.001$) and 'use distraction techniques when stressed' ($t=-3.239$ $p<0.001$) were less relevant for them. In contrast, more prevalent topics amongst disabled and shielded people included 'doing exercise even if unmotivated' ($t=3.918$ $p<0.001$), 'be more communicative with people' ($t=4.703$, $p<0.001$), 'follow lockdown rules and work out new approaches to reduce stress in the household' ($t=3.524$ $p<0.001$), 'listen to music or the wildlife' ($t=3.878$ $p<0.001$) and 'use the time to reflect' ($t=4.253$ $p<0.001$).

People who had been diagnosed with anxiety or depression were more likely to recommend 'being kind to yourself and others' (anxiety $t=4.996$ $p<0.001$; depression $t=7.863$ $p<0.001$) and to 'listen to music or appreciate wildlife' (anxiety $t=3.742$ $p<0.001$; depression $t=4.321$ $p<0.001$). Those with anxiety also were more likely to recommend meditation or yoga (anxiety $t=4.552$ $p<0.001$; depression $t=-0.278$ $p=0.787$), whereas those with depression were more likely to recommend 'taking pleasure in simple things' (anxiety $t=1.687$ $p=0.0917$; depression $t=3.868$ $p<0.001$) and 'doing exercise even if unmotivated' (anxiety $t=2.468$ $p=0.014$; depression $t=3.438$ $p<0.001$).

Finally, the prevalence of advice topics was examined in relation to people living with children because this was amongst the most substantial predictor of pandemic impact. The majority of topics also differed significantly in prevalence. Most notably, 'do something creative' ($t=13.282$ $p<0.001$), 'take the opportunity to slow down a bit' ($t=9.021$ $p<0.001$), 'try to focus on the positives' ($t=7.921$ $p<0.001$) and 'follow lockdown rules and work out new approaches to reduce stress in the household' ($t=7.254$ $p<0.001$) were all more prevalent.

Therefore, despite the intrinsic noisiness of topic modelling, the broad range of pragmatic coping strategies that people recommend applying differed significantly for sub-populations whose were most at risk of adverse impact during the pandemic.

Discussion

Our results provide converging evidence at large population scale that by May 2020 (peak UK lockdown), the Covid-19 pandemic had profound but idiosyncratic effects on mental health and wellbeing in the UK. The effects were complex, comprising multiple dimensions

of change, some being positive. The substantial variability in these dimensions of impact was associated with a combination of clinical/biological and psycho-socio-economic variables. Furthermore, there were statistically robust relationships between these variables and what people reported, in their own words, had helped them during the pandemic.

Differences in the population distributions of depression, anxiety, and sleep were observed from pre-pandemic to the time of maximal UK lockdown, being indicative of more pronounced untoward effects in particular groups, such as in older adults. However, such macro-data obfuscates considerable nuanced variations in the nature and extent of pandemic impact across individuals. Demographic characteristics, work, environment and social circumstances all had robust associations, varying in scale from small to very large, with the nature and extent of self-reported impact of the pandemic. In some ways this was anticipated based on extant literature,⁸⁻¹² but in others it was unexpected. Most notably, health workers showed very large differences to the broader population, being less relaxed and having less free time, but also reporting better sleep and greater work engagement. People from minority backgrounds were more worried about the impact of the pandemic on health, but also had more positive outlooks.

It was predicted that the impact of the Covid-19 pandemic would be substantially influenced by mental health and neurologic disorders,^{1,2} and dimensional traits.¹³ Notably, although overall, people with psychiatric and neurologic conditions were less likely to report increased connectedness during the pandemic, these generalised associations were of small scale. More selective associations were observed for particular disorders: e.g. elevated health worries in anxiety disorders / obsessive-compulsive disorder, and increased conflict at home in adults with attention-deficit hyperactivity disorder.^{14,15} However, trait and personality scales collectively accounted for disproportionate pandemic impact: negative impact was associated with compulsivity and insecurity, and positive impact with compassion, conscientiousness, perfectionism, and extroversion. This accords with the notion that certain personality traits are prominent in shaping resilience, whereas others engender vulnerability.¹⁶

Online technology can provide a powerful mediator of positive and negative impact during the pandemic. Prior studies proposed that a subset of people develop problematic usage of online technology.^{3,17,18} Accordingly, negative Covid-19 impact was strongly linked not with time spent using online technology *per se*, but with maladaptive online behaviours.

Conversely, the benefits of using technology to stay connected were prominent in the questionnaire and free text analyses. One might conclude that limiting screen time could be counterproductive; more nuanced approaches to develop healthy online behaviours are warranted.

The profound impact of the pandemic was perhaps best captured in the data-driven analysis of free text describing peoples' lived-experience. Crucially, the dimensionality of advice was much higher than for positive and negative impact statements, with ~50 topics optimally summarised the practical measures people said helped them during the pandemic. On one level, the fact that the prevalence of these topics differed significantly as a function of participant characteristics is surprising insofar as topic modelling is intrinsically noisy and the diversity of possible topics very broad. On another level, the observed relationships in many cases make intuitive sense; some measures are irrelevant or impractical, whereas others are more germane, depending on one's individual circumstances. Looking forwards, we believe that there is potential to extend the preliminary topic modelling analysis conducted here in order to identify pragmatic individually tailored advice based on this novel intersection of sociodemographic, contextual and personality variables with the corpus of peoples' self-expressed expert experiences. The rationale for thinking this could be effective as an intervention approach is simple: if something has proven tractable and effective for many people, in their own experience, it likely will also prove helpful for others. Indeed, we propose that such topics could conceivably be updated on a periodic basis, to determine pragmatic measures that people find helpful as events unfold during the recovery phase and beyond, and then making that advice available to others who have matched profiles. Future research should explore this potential through deeper analysis of the topics and study as a potential pragmatic intervention in future research.

Taken together, these results demonstrate the importance of measuring multiple dimensions when quantifying pandemic impact on mental health, and the necessity of incorporating the broad psycho-socio-economic context when seeking to understand, predict or mitigate such impact. The largest associations explaining pandemic impact related to occupation and home context, followed by medium associations with personality traits, compulsivity and maladaptive technology use, and smaller but still notable associations for mental health and neurological disorders and demographic characteristics. This complexity in turn necessitates careful study design to account for confounding factors.

Primary limitations of this study pertain to cross-sectional analysis albeit within the context of a longitudinal study. This is somewhat mitigated by the large scale of data and matching demographics for Pre and Mid pandemic timeframes, and by the rigorous multivariate statistical approaches deployed. We intend to recontact this cohort at 3, 6 and 12 months to plot change in the idiosyncratic impact of the pandemic and its aftermath in vivo^{19,20} including more detailed assessment of identified vulnerable sub-groups. We also note that the current paper focused on data from people aged 16 and above. It is vital that research also examines younger people using this and related methodologies adapted for that purpose.²

Methods

Recruitment

Starting from December 26th 2019, participants were recruited to the study website, where they completed cognitive tests and a detailed questionnaire. Articles describing the study were placed on the BBC2 Horizon, BBC Home page, BBC News Home page and circulated on mobile news meta-apps from January 1st 2020. To maximise representativeness of the sample there were no inclusion/exclusion criteria. Analyses here exclude data from participants under 16 years old, as they completed a briefer questionnaire, and those who responded to the questionnaire unfeasibly fast (<4 minutes). Cognitive test data will be reported separately. The study was approved by the Imperial College Research Ethics Committee (17IC4009).

Data collection

Data were collected via our custom server system, which produces study-specific websites (<https://gbws.cognitron.co.uk>) on the Amazon EC2. Questionnaires and tests were programmed in Javascript and HTML5. They were deliverable via personal computers, tablets and smartphones. The questionnaire included scales quantifying sociodemographic, lifestyle, online technology use, personality, and mental health (**Supplement 1**). Participants could enrol for longitudinal follow up, scheduled for 3, 6 and 12 months. People returning to the site outside of these timepoints were navigated to a different URL. On May 2nd 2020, the questionnaire was augmented - in light of the Covid-19 pandemic - with an extended mood scale, and an instrument comprising 47 items quantifying self-perceived effects on mood, behaviour and outlook (Pandemic General Impact Scale PD-GIS-11). Questions regarding

pre-existing psychiatric and neurological conditions, lockdown context, having the virus, and free text fields were added. This coincided with further promotion via BBC2 Horizon and BBC Homepage.

Data processing and statistical analysis

Analyses were conducted in MATLAB R2020a. Participants with missing data were retained as some questions were contingent on others; therefore, observations per analysis vary with data availability. The questionnaire was organised into the following scales: demographics/lifestyle, online technology use, mood, personality, compulsive traits, and pandemic impact. Where appropriate, scales were summarised in the following steps. Agree-disagree and frequency items were filtered for missing data casewise within scale, converted to numeric, rank transformed to normality, and subscale scores estimated using principal component analysis. Components with eigenvalues > 1 were varimax rotated and component scores estimated by regression. PCAs are reported in **Supplement 2**.

Cohort demographics were segmented into Pre-Pandemic, Early-Pandemic, and Mid-Pandemic epochs (**Figure 1a**). General linear modelling tested how sociodemographic variables statistically predicted differences in mood, anxiety, and sleep, between the densely sampled and demographically matched Pre-Pandemic and Mid-Pandemic epochs.

Subscales of the pandemic impact instrument (PD-GIS-11 **Supplement 3**) quantified self-perceived impact across 11 psycho-socio-economic dimensions. These were cross-validated against the mental health self-assessment using CCA and Pearson's correlation. General linear modelling (GLM) determined the relationship of sociodemographic variables, home context, cohabitants and work arrangements to the PD-GIS-11. Further GLMs examined carers and people reporting psychiatric and neurologic diagnoses (for groups with N > 90 members) with the sociodemographics factored out. Due to the expected shared variance between online technology use, personality traits and compulsivity, their multivariate relationships with the PD-GIS-11 were quantified via canonical correlation analysis (CCA).

Latent Dirichlet Allocation (LDA)⁷ was applied to extracted common topics from free text responses to the questions “What has been most POSITIVE about the lockdown?”, “What has been most NEGATIVE about the lockdown?” and “What have you done that you would recommend to others because it has helped you during the lockdown?” Further details are

given in **Supplement 4**. Optimal numbers of topics were estimated for each question as follows. LDA models of different complexity were trained on 2/3rds of the participants' data. The trained models were applied to the remaining data. The lowest resultant perplexity value, quantifying fit of theoretical and observed topic word distributions, was identified and the LDA model retrained on all data at the corresponding level of complexity. Inter-individual differences in topic mixture estimates were estimated and analysed with reference to mood, PD-GIS-11 and at-risk sub-populations using CCA and t-tests.

Acknowledgements

Dr Hampshire is supported by the UK Dementia Research Institute and Biomedical Research Centre at Imperial College London with technology development supported by EU-CIG EC Marie-Curie CIG and NIHR grant II-LB-0715-20006. Dr Soreq's role was supported by MRC grant MR/R005370/1. William Trender is supported by the EPSRC Center for Doctoral Training in Neurotechnology. Dr Chamberlain's role in this study was funded by a Wellcome Trust Clinical Fellowship (Reference 110049/Z/15/Z). Mitul Mehta is in part supported by the National Institute for Health Research (NIHR) Biomedical Research Centre at South London and Maudsley NHS Foundation Trust and King's College London. The views expressed are those of the author(s) and not necessarily those of the NHS, the NIHR or the Department of Health and Social Care. We would like to acknowledge COST Action CA16207 'European Network for Problematic Usage of the Internet', supported by COST (European Cooperation in Science and Technology); and the support of the National UK Research Network for Behavioural Addictions (NUK-BA).

Declaration of interests

Dr. Chamberlain consults for Promentis, and receives stipends for journal editorial work from Elsevier. Dr. Grant has received research grants from the TLC Foundation for Body-Focused Repetitive Behaviors, Biohaven, Promentis, and Avanir Pharmaceuticals. Prof. Mehta has received grant income from Takeda Pharmaceuticals, Johnson & Johnson and Lundbeck. Dr Adam Hampshire is owner and founder of Future Cognition Ltd and H2 Cognitive Designs Ltd, which develop custom cognitive assessment software for other university-based research groups. Dr Peter Hellyer is owner and co-founder of H2 Cognitive Designs Ltd. The authors report no other conflicts of interest.

References

- 1 Pfefferbaum, B. & North, C. S. Mental Health and the Covid-19 Pandemic. *N Engl J Med*, doi:10.1056/NEJMp2008017 (2020).
- 2 Holmes, E. A. et al. Multidisciplinary research priorities for the COVID-19 pandemic: a call for action for mental health science. *Lancet Psychiatry* 7, 547-560, doi:10.1016/S2215-0366(20)30168-1 (2020).
- 3 Kiraly, O. et al. Preventing problematic internet use during the COVID-19 pandemic: Consensus guidance. *Compr Psychiatry* 100, 152180, doi:10.1016/j.comppsy.2020.152180 (2020).
- 4 Pareek, M. et al. Ethnicity and COVID-19: an urgent public health research priority. *Lancet* 395, 1421-1422, doi:10.1016/S0140-6736(20)30922-3 (2020).
- 5 Brooks, S. K. et al. The psychological impact of quarantine and how to reduce it: rapid review of the evidence. *Lancet* 395, 912-920, doi:10.1016/S0140-6736(20)30460-8 (2020).
- 6 Ioannidis, K., Askelund, A. D., Kievit, R. A. & van Harmelen, A. L. The complex neurobiology of resilient functioning after childhood maltreatment. *BMC Med* 18, 32, doi:10.1186/s12916-020-1490-7 (2020).
- 7 Blei D.M, N. A. Y., Jordan M.I, Lafferty J. Latent Dirichlet allocation. *Journal of Machine Learning Research* 3, 993-1022 (2003).
- 8 Chowkwanyun, M. & Reed, A. L., Jr. Racial Health Disparities and Covid-19 - Caution and Context. *N Engl J Med*, doi:10.1056/NEJMp2012910 (2020).
- 9 England., P. H. Disparities in the risk and outcomes of COVID-19. . (2020).
- 10 Kirby, T. Evidence mounts on the disproportionate effect of COVID-19 on ethnic minorities. *Lancet Respir Med* 8, 547-548, doi:10.1016/S2213-2600(20)30228-9 (2020).
- 11 Lai, J. et al. Factors Associated With Mental Health Outcomes Among Health Care Workers Exposed to Coronavirus Disease 2019. *JAMA Netw Open* 3, e203976, doi:10.1001/jamanetworkopen.2020.3976 (2020).
- 12 Rossi, R. et al. Mental Health Outcomes Among Frontline and Second-Line Health Care Workers During the Coronavirus Disease 2019 (COVID-19) Pandemic in Italy. *JAMA Netw Open* 3, e2010185, doi:10.1001/jamanetworkopen.2020.10185 (2020).
- 13 Chamberlain, S. R., Stochl, J., Redden, S. A. & Grant, J. E. Latent traits of impulsivity and compulsivity: toward dimensional psychiatry. *Psychol Med* 48, 810-821, doi:10.1017/S0033291717002185 (2018).
- 14 Cortese, S. & Coghill, D. Twenty years of research on attention-deficit/hyperactivity disorder (ADHD): looking back, looking forward. *Evid Based Ment Health* 21, 173-176, doi:10.1136/ebmental-2018-300050 (2018).
- 15 Posner, J., Polanczyk, G. V. & Sonuga-Barke, E. Attention-deficit hyperactivity disorder. *Lancet* 395, 450-462, doi:10.1016/S0140-6736(19)33004-1 (2020).
- 16 Grant J.E, P. A., Chamberlain S.R. . Obsessive-Compulsive Personality Disorder. American Psychiatric Association Publishing (2019).
- 17 Ioannidis, K. et al. Problematic internet use (PIU): Associations with the impulsive-compulsive spectrum. An application of machine learning in psychiatry. *J Psychiatr Res* 83, 94-102, doi:10.1016/j.jpsychires.2016.08.010 (2016).
- 18 Tiego, J. et al. Problematic use of the Internet is a unidimensional quasi-trait with impulsive and compulsive subtypes. *BMC Psychiatry* 19, 348, doi:10.1186/s12888-019-2352-8 (2019).
- 19 Fancourt D, S. A., Bu F. Trajectories of depression and anxiety during enforced isolation due to COVID-19; longitudinal analyses of 59,318 adults in the UK with and without diagnosed mental illness. medRxiv (2020).

20 Wang, C. et al. A longitudinal study on the mental health of general population during the COVID-19 epidemic in China. *Brain Behav Immun*, doi:10.1016/j.bbi.2020.04.028 (2020).

Supplementary materials: Hampshire et al.

Contents

Supplement 1 - Study Questionnaires

Supplement 2 - Principal Component Analyses of Questionnaire Instrument scales

Supplement 3a - PD-GIS individual item and PCA

Supplement 3b - Canonical correlation analysis between Mood State and PD-GIS-11

Supplement 3c - Demographic predictors of the PD-GIS-11

Supplement 3d - Rates of previously diagnosed clinical conditions reported in the sample

Supplement 3e - GLM for clinical conditions vs PD-GIS-11 subscales

Supplement 3f - sub-sampling and permutation analyses to characterise overfit and reproducibility of canonical correlation analysis of PD-GIS-11 items vs traits and technology use

Supplement 4a - topics and their top ten exemplars

Supplement 4b - CCA of free text topic estimates vs mood self assessment item scores

Supplement 4c - CCA of free text topic estimates vs items of the PD-GIS-11

Supplement 4d - Topics, their relative prevalence in select sub-populations and top ten exemplars selected as having the highest topic mixtures

Supplement 1 - Study Questionnaires

(a) Demographic and other contextual information

The following background information was collected from participants: age, gender, ethnicity, country of residence, level of education, occupational status, and income.

(b) Mood, anxiety, and sleep

Mood and anxiety symptoms were recorded using the extensively validated Patient Health Questionnaire 2 (PHQ-2) and GAD-7 respectively^{1,2}The PHQ-2 and GAD-7 ask about symptoms over the preceding two weeks, and each question is answered on a 4-point scale, from 0 (not at all) to 3 (nearly every day). Additionally, we asked how many hours on average participants slept per night.

(c) Personality traits, and compulsivity

Personality traits were quantified using the extensively validated Big-5 Inventory, which comprises 44 questions³. Each question is a short phrase and is answered on a 5-point rating scale from 1 (strongly disagree) to 5 (strongly agree). Aspects of personality classically reflect extraversion, agreeableness, conscientiousness, neuroticism and openness to experience³Based on prior factor analysis of data from 60,000 participants, we used an abbreviated version, comprising 18 questions with a data-driven structure of 6 components. These are reported in the factor analysis in **Appendix 2**.

Compulsivity is a trans-diagnostic concept representing the tendency towards repetitive habits, and was measured using the Cambridge-Chicago Compulsivity Trait Scale (CHI-T)⁴. This is a 15-item questionnaire that is answered on a 4-point rating scale ranging from 1 (strongly disagree) to 4 (strongly agree). The CHI-T is sensitive to compulsivity across a range of disorders^{4,5}.

(d) Impact of the pandemic

The Pandemic General Impact Scale (PD-GIS-11) was developed for the current study to quantify the self-reported negative and positive impacts of the Covid-19 pandemic, on multiple levels of psycho-socio-economic investigation. The instrument comprised 47 questions, relating to potential negative and positive aspects of the situation, and longer term outlook. Each item is answered on a 5-point scale ranging from 1 (strongly disagree) to 4 (strongly agree). Negative impact questions covered areas of concern for health (own health and that of others), being concerned with the consequences of contracting Covid-19, loneliness, conflict at home, negative emotions from reading/listening to news, grieving, loss of employment/job/income, loss of leisure and well being activities, loss of daily structure, disruption of sleep patterns, less healthy lifestyles, less focus on personal hygiene, loss of productivity, social disconnection, life being dominated by infection control routines, loss of important goods/medication/services, more arguments in the household, and going on the internet to avoid people at home. Positive impact questions covered less commuting time, more structure to the day, joy at being able to spent more time with people at home, more connections with people online, sense of shared community, more efficient/productive work, being more relaxed due to more time at home, better sleep due to spare time, greater sense of purpose in work, greater opportunity to exercise, improved natural environment, time to read for pleasure, work less stressful due to doing it from home, spending more time on hobbies, spending less and saving money, more social contact outside of the home, feeling less tired, feeling better connected with people at home, more wildlife, taking greater appreciation for the simple things in life, and being less stressed by daily responsibilities.

(e) Online Technology use

Technology use was quantified by asking about frequency of use of the following, over the previous 4 week period: Smart Phone, Computer (Desktop/Laptop), Tablet Device, Gaming Console, Email, Social Media, reading the news, playing computer games, online gambling, working, learning/studying, shopping, streaming films or music, and searching for information online. Each question was responded to on a 7-point scale, from 0 (never) to 7 (more often than hourly every day).

(f) Stress from online technology

Stress from online technology was measured by asking the participants the following questions, regarding the past 4 weeks: When you checked Email, did it tend to make you feel stressed/unhappy or relieved/happy? When you used social media, did it tend to make you feel stressed/unhappy or relieved/happy? When you read the news, did it tend to make you feel stressed/unhappy or relieved/happy? When you played computer games, did it tend to make you feel stressed/unhappy or relieved/happy? The response options for each question were: "Mostly stressed/unhappy", "Mostly relieved/happy", "Both", or "Neither".

(g) Maladaptive ('Addictive') use of online technology

Maladaptive use of online technology was quantified using the following questions, which were based on expert consensus amongst the study team in the field of Problematic Usage of the Internet: How often did you check email or social media accounts after you went to bed? How often did you use internet related activities to block out disturbing thoughts or soothe yourself? How often did you choose to spend time on internet related activities to battle loneliness or boredom? How often did you suffer from negative financial consequences because of an online activity? How often did you check your email or social media account or equivalent before something else that you needed to do? How often did you try to stop an excessive online activity but feel a compulsion to continue? How often did you try to cut down the amount of time you spend on-line and fail? The questions asked about these areas over the preceding 4 week period. For the first question (using technology before bed), response options were 1 (never) to 5 (daily). For the other questions, response options were: 1 (never) to 7 (more than hourly every day).

References

- 1 Kroenke, K., Spitzer, R. L. & Williams, J. B. The Patient Health Questionnaire-2: validity of a two-item depression screener. *Med Care* 41, 1284-1292, doi:10.1097/01.MLR.0000093487.78664.3C (2003).
- 2 Spitzer, R. L., Kroenke, K., Williams, J. B. & Lowe, B. A brief measure for assessing generalized anxiety disorder: the GAD-7. *Arch Intern Med* 166, 1092-1097, doi:10.1001/archinte.166.10.1092 (2006).
- 3 John O.P, Naumann L.P & C.J., S. in *Handbook of personality: Theory and research* (ed R. W. Robins O. P. John, & L. A. Pervin) (Guilford Press, 2008).
- 4 Chamberlain, S. R. & Grant, J. E. Initial validation of a transdiagnostic compulsivity questionnaire: the Cambridge-Chicago Compulsivity Trait Scale. *CNS Spectr* 23, 340-346, doi:10.1017/S1092852918000810 (2018).
- 5 Albertella, L. *et al.* Compulsivity is measurable across distinct psychiatric symptom domains and is associated with familial risk and reward-related attentional capture. *CNS Spectr*, 1-8, doi:10.1017/S1092852919001330 (2019).

Appendix 2a - PCA of the Mood Self Assessment

Mid stage

C1	C2		Eigenvalue	Component
0.78	0.36	Q1 Nervous, anxious, on edge	6.99	C1
0.86	0.32	Q2 Down or depressed	1.17	C2
0.85	0.33	Q3 Tired or little energy	0.94	C3
0.65	0.48	Q4 Trouble concentrating	0.68	C4
0.43	0.46	Q5 Not able to get to sleep/stay asleep	0.54	C5
0.45	0.50	Q6 Not stop/control worrying	0.51	C6
0.64	0.40	Q7 Worrying about diferent things	0.43	C7
0.32	0.70	Q8 Trouble relaxing	0.42	C8
0.48	0.66	Q9 Restless/ can't stay still	0.37	C9
0.31	0.68	Q10 Easily annoyed/irritable	0.29	C10
0.32	0.67	Q11 Afraid something awful might happen	0.27	C11
0.30	0.51	Q12 Little pleasure doing things	0.23	C12
-0.06	-0.18	Q13 Hours slept	0.15	C13

	Q1	Q2	Q3	Q4	Q1	Q2	Q3	Q4	Q1	Q2	Q3	Q4	Q1
Q1		0.79	0.78	0.69	0.47	0.54	0.64	0.48	0.63	0.50	0.48	0.40	-0.09
Q2	0.79		0.84	0.70	0.51	0.53	0.68	0.50	0.64	0.49	0.49	0.42	-0.11
Q3	0.78	0.84		0.72	0.51	0.55	0.68	0.50	0.63	0.50	0.50	0.43	-0.11
Q4	0.69	0.70	0.72		0.61	0.55	0.59	0.51	0.60	0.51	0.53	0.52	-0.18
Q1	0.47	0.51	0.51	0.61		0.49	0.48	0.43	0.46	0.38	0.50	0.41	-0.13
Q2	0.54	0.53	0.55	0.55	0.49		0.50	0.48	0.54	0.50	0.46	0.36	-0.09
Q3	0.64	0.68	0.68	0.59	0.48	0.50		0.50	0.58	0.45	0.47	0.38	-0.10
Q4	0.48	0.50	0.50	0.51	0.43	0.48	0.50		0.69	0.57	0.57	0.40	-0.09
Q1	0.63	0.64	0.63	0.60	0.46	0.54	0.58	0.69		0.61	0.57	0.45	-0.12
Q2	0.50	0.49	0.50	0.51	0.38	0.50	0.45	0.57	0.61		0.57	0.47	-0.13
Q3	0.48	0.49	0.50	0.53	0.50	0.46	0.47	0.57	0.57	0.57		0.46	-0.11
Q4	0.40	0.42	0.43	0.52	0.41	0.36	0.38	0.40	0.45	0.47	0.46		-0.37
Q1	-0.09	-0.11	-0.11	-0.18	-0.13	-0.09	-0.10	-0.09	-0.12	-0.13	-0.11	-0.37	

All stages

Loadings	How often:	Eigenvalue	Component
0.77	Q1 Nervous, anxious, on edge	3.07	1
0.81	Q2 Down or depressed	0.63	2
0.72	Q3 Tired or little energy	0.50	3
0.71	Q4 Trouble concentrating	0.47	4
0.58	Q5 Not able to get to sleep/stay asleep	0.33	5

	Q1	Q2	Q3	Q4	Q5
Q1		0.66	0.51	0.55	0.44
Q2	0.66		0.58	0.54	0.44
Q3	0.51	0.58		0.54	0.45
Q4	0.55	0.54	0.54		0.44
Q5	0.44	0.44	0.45	0.44	

Appendix 2b - PCA of the Minimise Big5 Personality Scale

Secure	Open	Intrverted	Artistic	Compassionate	Conscientious	Q	Eigenvalue	Component
-0.06	0.11	-0.67	0.05	0.19	0.00	Talkative	3.33	C1
0.00	0.12	-0.03	0.01	0.16	0.72	Thorough job	2.25	C2
0.09	0.80	-0.14	0.16	0.03	0.06	Original/ new ideas	1.91	C3
-0.09	-0.01	0.80	-0.03	0.02	0.08	Reserved	1.74	C4
0.76	0.12	0.00	-0.02	0.19	0.05	Relaxed, handles stress well	1.55	C5
0.17	0.07	0.01	0.03	0.59	-0.06	Forgiving	1.22	C6
-0.10	0.14	0.07	0.02	0.10	-0.49	Disorganised	0.70	C7
-0.73	-0.01	0.13	0.03	0.10	-0.01	Worries a lot	0.67	C8
-0.06	-0.02	0.63	-0.01	0.02	-0.19	Tends to be quiet	0.61	C9
0.70	0.08	-0.04	-0.03	0.17	0.12	Stable/ not easily upset	0.58	C10
0.13	0.80	-0.05	0.18	0.01	0.04	Inventive	0.54	C11
0.05	0.16	0.01	0.03	0.15	0.68	Perseveres until the task is finished	0.49	C12
-0.06	0.21	-0.01	0.76	0.19	0.04	Values artistic/aesthetic experiences	0.48	C13
-0.01	0.07	-0.02	0.09	0.68	0.11	Kind/considerate to almost everyone	0.46	C14
0.01	0.48	0.04	0.28	0.24	0.03	Likes to reflect/play with ideas	0.41	C15
0.01	-0.07	0.05	-0.54	0.04	0.01	Few artistic instincts	0.40	C16
0.05	0.01	-0.12	0.05	0.55	0.12	Cooperative	0.36	C17
-0.02	0.17	-0.02	0.66	0.09	-0.01	Sophisticated in art/music/literature	0.29	C18

	Q1	Q2	Q3	Q4	Q5	Q6	Q7	Q8	Q9	Q10	Q11	Q12	Q13	Q14	Q15	Q16	Q17	Q18
Q1		0.09	0.20	-0.54	0.03	0.08	0.05	0.01	-0.42	-0.02	0.11	0.03	0.11	0.14	0.08	-0.03	0.19	0.11
Q2	0.09		0.16	0.04	0.09	0.05	-0.32	0.01	-0.14	0.12	0.11	0.53	0.09	0.20	0.11	0.00	0.17	0.04
Q3	0.20	0.16		-0.13	0.17	0.09	0.06	-0.08	-0.12	0.12	0.69	0.16	0.29	0.10	0.43	-0.15	0.06	0.25
Q4	-0.54	0.04	-0.13		-0.05	0.00	0.03	0.18	0.49	-0.01	-0.07	0.04	-0.02	0.00	0.03	0.06	-0.07	-0.03
Q5	0.03	0.09	0.17	-0.05		0.24	-0.05	-0.54	-0.04	0.59	0.18	0.12	0.00	0.12	0.10	0.04	0.14	0.02
Q6	0.08	0.05	0.09	0.00	0.24		0.09	-0.06	0.00	0.21	0.10	0.08	0.13	0.43	0.17	-0.02	0.32	0.08
Q7	0.05	-0.32	0.06	0.03	-0.05	0.09		0.12	0.19	-0.10	0.08	-0.29	0.05	-0.01	0.10	0.00	-0.04	0.05
Q8	0.01	0.01	-0.08	0.18	-0.54	-0.06	0.12		0.14	-0.48	-0.11	-0.02	0.09	0.06	0.03	0.00	0.00	0.05
Q9	-0.42	-0.14	-0.12	0.49	-0.04	0.00	0.19	0.14		-0.03	-0.07	-0.13	-0.01	-0.03	0.01	0.06	-0.10	-0.02
Q10	-0.02	0.12	0.12	-0.01	0.59	0.21	-0.10	-0.48	-0.03		0.17	0.17	-0.01	0.11	0.08	0.04	0.15	0.00
Q11	0.11	0.11	0.68	-0.07	0.18	0.10	0.08	-0.11	-0.07	0.17		0.18	0.30	0.09	0.43	-0.17	0.04	0.25
Q12	0.03	0.53	0.16	0.04	0.12	0.08	-0.29	-0.02	-0.13	0.17	0.18		0.11	0.18	0.15	0.00	0.17	0.04
Q13	0.11	0.09	0.29	-0.02	0.00	0.13	0.05	0.09	-0.01	-0.01	0.30	0.11		0.22	0.37	-0.41	0.14	0.56
Q14	0.14	0.20	0.10	0.00	0.12	0.43	-0.01	0.06	-0.03	0.11	0.09	0.18	0.22		0.23	-0.04	0.41	0.13
Q15	0.08	0.11	0.43	0.03	0.10	0.17	0.10	0.03	0.01	0.08	0.43	0.15	0.37	0.23		-0.15	0.16	0.29
Q16	-0.03	0.00	-0.15	0.06	0.04	-0.02	0.00	0.00	0.06	0.04	-0.17	0.00	-0.41	-0.04	-0.15		0.00	-0.37
Q17	0.19	0.17	0.06	-0.07	0.14	0.32	-0.04	0.00	-0.10	0.15	0.04	0.17	0.14	0.41	0.16	0.00		0.09
Q18	0.11	0.04	0.25	-0.03	0.02	0.08	0.05	0.05	-0.02	0.00	0.25	0.04	0.56	0.13	0.29	-0.37	0.09	

medRxiv preprint doi: <https://doi.org/10.1101/2020.06.18.20134635>; this version posted August 4, 2020. The copyright holder for this preprint (which was not certified by peer review) is the author/funder, who has granted medRxiv a license to display the preprint in perpetuity. It is made available under a [CC-BY-NC-ND 4.0 International license](https://creativecommons.org/licenses/by-nc-nd/4.0/) .

Appendix 2c - PCA of the Technology use, stress and addiction scales

USE

	Phone, social, entertainment	Computer, Work, study	Gaming	Email, news and info		Eigenvalue	Component
	0.567	0.154	0.091	0.257	Smart phone	3.58	C1
	0.094	0.652	0.080	0.239	Computer	1.73	C2
	-0.035	-0.040	0.060	0.301	Tablet	1.25	C3
	0.141	0.065	0.774	-0.046	Games console	1.15	C4
	0.165	0.328	-0.038	0.649	Email	0.96	C5
	0.585	-0.001	0.072	0.062	Social media	0.89	C6
	0.118	0.155	-0.022	0.332	News	0.87	C7
	0.035	0.057	0.719	0.015	Games	0.77	C8
	0.088	0.015	0.235	0.066	Gamble	0.66	C9
	0.158	0.693	0.003	0.229	Work	0.65	C10
	0.287	0.390	0.089	-0.094	Learn/study	0.59	C11
	0.255	0.118	0.036	0.266	Shop	0.53	C12
	0.516	0.258	0.251	-0.087	Stream	0.52	C13
	0.436	0.328	0.055	0.217	Search	0.46	C14
	0.444	0.335	0.199	0.027	Hours per day	0.40	C15

STRESS

Loadings	Q - stress from	Eigenvalue	Component
0.35	Email	1.4	C1
0.56	Social media	1.0	C2
0.32	News	0.8	C3
0.15	Computer games	0.8	C4

Addiction

Loading		Eigenvalue	Component
0.48	Q1 Check email/social media in bed	3.26	C1
0.62	Q2 Internet activities to sooth self / block out disturbing thoughts	0.94	C2
0.63	Q3 Time online to battle loneliness	0.84	C3
0.36	Q4 Negative financial consequences due to online pursuits	0.72	C4
0.67	Q5 Check email/social media before something important	0.52	C5
0.77	Q6 Try to stop online activity but feel compelled	0.41	C6
0.71	Q7 Try to cut down time online but fail	0.31	C7

	Q1	Q2	Q3	Q4	Q5	Q6	Q7	Q8	Q9	Q10	Q11	Q12	Q13	Q14	Q15
Q1		0.2482	0.0423	0.1591	0.3081	0.4089	0.1562	0.0876	0.0953	0.2642	0.1727	0.2014	0.3162	0.3415	0.31
Q2	0.2482		0.0186	0.094	0.385	0.0797	0.1831	0.1214	0.0371	0.5294	0.2372	0.1352	0.1974	0.2883	0.31
Q3	0.0423	0.0186		0.0222	0.1635	-0.014	0.1007	0.0569	0.009	0.0453	0.0012	0.1619	-0.046	0.0559	-0.03
Q4	0.1591	0.094	0.0222		-0.01	0.1341	-0.014	0.5635	0.206	0.0737	0.142	0.0532	0.302	0.0976	0.22
Q5	0.3081	0.385	0.1635	-0.01		0.1385	0.2847	0.0015	0.0481	0.4038	0.0959	0.2544	0.0996	0.3144	0.20
Q6	0.4089	0.0797	-0.014	0.1341	0.1385		0.0457	0.0781	0.07	0.1139	0.1626	0.1402	0.2748	0.2252	0.31
Q7	0.1562	0.1831	0.1007	-0.014	0.2847	0.0457		0.0076	0.0537	0.1793	0.0787	0.1331	0.0813	0.2604	0.09
Q8	0.0876	0.1214	0.0569	0.5635	0.0015	0.0781	0.0076		0.1574	0.0285	0.0931	0.0381	0.1938	0.0946	0.21
Q9	0.0953	0.0371	0.009	0.206	0.0481	0.07	0.0537	0.1574		0.0641	0.0215	0.0752	0.1063	0.0446	0.09
Q10	0.2642	0.5294	0.0453	0.0737	0.4038	0.1139	0.1793	0.0285	0.0641		0.3142	0.1896	0.2341	0.3299	0.29
Q11	0.1727	0.2372	0.0012	0.142	0.0959	0.1626	0.0787	0.0931	0.0215	0.3142		0.1321	0.3011	0.2746	0.26
Q12	0.2014	0.1352	0.1619	0.0532	0.2544	0.1402	0.1331	0.0381	0.0752	0.1896	0.1321		0.2032	0.2296	0.15
Q13	0.3162	0.1974	-0.046	0.302	0.0996	0.2748	0.0813	0.1938	0.1063	0.2341	0.3011	0.2032		0.3497	0.36
Q14	0.3415	0.2883	0.0559	0.0976	0.3144	0.2252	0.2604	0.0946	0.0446	0.3299	0.2746	0.2296	0.3497		0.33
Q15	0.311	0.315	-0.03	0.215	0.199	0.308	0.093	0.207	0.095	0.288	0.257	0.153	0.362	0.328	

	Q1	Q2	Q3	Q4
Q1		0.1853	0.1458	0.0337
Q2	0.1853		0.1742	0.1223
Q3	0.1458	0.1742		-0.017
Q4	0.0337	0.1223	-0.017	

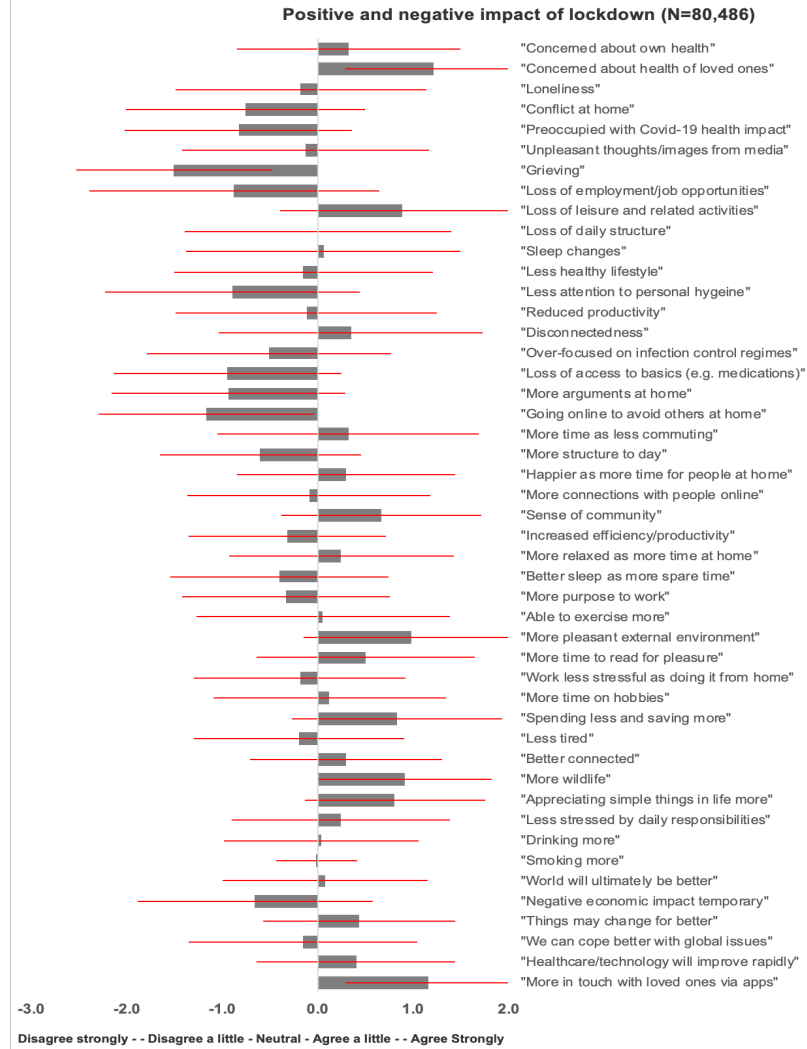
	Q1	Q2	Q3	Q4	Q5	Q6	Q7
Q1		0.37	0.34	0.15	0.43	0.29	0.27
Q2	0.37		0.58	0.24	0.41	0.41	0.36
Q3	0.34	0.58		0.23	0.45	0.42	0.36
Q4	0.15	0.24	0.23		0.21	0.29	0.25
Q5	0.43	0.41	0.45	0.21		0.50	0.44
Q6	0.29	0.41	0.42	0.29	0.50		0.68
Q7	0.27	0.36	0.36	0.25	0.44	0.68	

Appendix 2d - PCA of the CHIT compulsivity scale

Perfectionism	Reward drive	Cognitive rigidity		Eigenvalue	Component		Q1	Q2	Q3	Q4	Q5	Q6	Q7	Q8	Q9	Q10	Q11	Q12	Q13	Q14
0.57	-0.11	0.06	Leaving tasks unfinished	4.16	C1	Q1		0.4537	0.4017	0.1001	0.1548	0.0139	0.0716	-0.039	-0.115	0.2727	0.294	0.3696	0.1147	0.1604
0.67	-0.01	0.20	Doing things just right	2.01	C2	Q2	0.4537		0.5207	0.2201	0.2764	0.0902	0.1739	0.022	-0.019	0.3832	0.4188	0.4633	0.2342	0.2474
0.71	0.04	0.16	Completion to high standard	1.08	C3	Q3	0.4017	0.5207		0.2795	0.1953	0.116	0.156	0.0537	-0.036	0.4803	0.4457	0.4164	0.2052	0.3377
0.22	0.29	0.48	Repetitive thoughts	0.88	C4	Q4	0.1001	0.2201	0.2795		0.3345	0.3098	0.2406	0.2105	0.2308	0.3708	0.198	0.3063	0.3194	0.2802
0.17	0.08	0.54	Habits	0.83	C5	Q5	0.1548	0.2764	0.1953	0.3345		0.2481	0.217	0.064	0.1044	0.2482	0.1486	0.268	0.3346	0.1723
0.06	0.51	0.27	Addictive personality	0.70	C6	Q6	0.0139	0.0902	0.116	0.3098	0.2481		0.2783	0.3396	0.3867	0.2124	0.136	0.1591	0.1677	0.238
0.17	0.32	0.24	Stubborn/rigid	0.67	C7	Q7	0.0716	0.1739	0.156	0.2406	0.217	0.2783		0.2455	0.199	0.2201	0.2237	0.1817	0.1854	0.2255
0.03	0.67	0.01	Acting on urges	0.65	C8	Q8	-0.039	0.022	0.0537	0.2105	0.064	0.3396	0.2455		0.4774	0.1741	0.056	0.0928	0.0873	0.1657
-0.08	0.70	0.11	Immediate reward	0.58	C9	Q9	-0.115	-0.019	-0.036	0.2308	0.1044	0.3867	0.199	0.4774		0.1926	0.0198	0.0753	0.127	0.1487
0.53	0.25	0.32	Obsession with perfection	0.55	C10	Q10	0.2727	0.3832	0.4803	0.3708	0.2482	0.2124	0.2201	0.1741	0.1926		0.3868	0.429	0.3256	0.3634
0.61	0.10	0.13	Higher standards than others	0.52	C11	Q11	0.294	0.4188	0.4457	0.198	0.1486	0.136	0.2237	0.056	0.0198	0.3868		0.462	0.1815	0.3388
0.59	0.11	0.30	Soothed by completing tasks	0.49	C12	Q12	0.3696	0.4633	0.4164	0.3063	0.268	0.1591	0.1817	0.0928	0.0753	0.429	0.462		0.3044	0.3096
0.19	0.10	0.56	Avoid uncontrolled situations	0.47	C13	Q13	0.1147	0.2342	0.2052	0.3194	0.3346	0.1677	0.1854	0.0873	0.127	0.3256	0.1815	0.3044		0.3374
0.36	0.23	0.30	Need to be the best at things	0.41	C14	Q14	0.1604	0.2474	0.3377	0.2802	0.1723	0.238	0.2255	0.1657	0.1487	0.3634	0.3388	0.3096	0.3374	

Appendix 3a - PD-GIS-11 response distributions

Theme of each question:	Mean	SD	t	p
Concern about own health	0.3	0.3	1.17	79.0 <0.001
Concern about health of loved ones	1.2	0.93	374.3 <0.001	
Loneliness	-0.2	1.32	-38.3 <0.001	
Conflict at home	-0.8	1.25	-173.6 <0.001	
Focus on consequences of Covid-19	-0.8	1.19	-200.7 <0.001	
Unpleasant thoughts/images on	-0.1	1.29	-27.6 <0.001	
Grieving	-1.5	1.03	-418.0 <0.001	
Loss of employment/job opportunities	-0.9	1.52	-164.9 <0.001	
Loss of leisure and related activities	0.9	1.27	199.1 <0.001	
Loss of daily structure	0.0	1.40	0.8449	
Sleep changes	0.1	1.44	12.0 <0.001	
Less healthy lifestyle	-0.1	1.36	-31.6 <0.001	
Less attention to personal hygiene	-0.9	1.33	-192.4 <0.001	
Reduced productivity	-0.1	1.37	-24.4 <0.001	
Disconnectedness	0.3	1.38	72.2 <0.001	
Over-focused on infection control regimes	-0.5	1.28	-113.6 <0.001	
Loss of essential access to	-0.9	1.19	-228.3 <0.001	
More arguments at home	-0.9	1.23	-218.2 <0.001	
Going online to avoid others at home	-1.2	1.13	-296.1 <0.001	
More time as less commuting	0.3	1.37	67.6 <0.001	
More structure to day	-0.6	1.05	-164.8 <0.001	
Happier as spending more time with people	0.3	1.14	74.8 <0.001	
Connecting with people more than before	-0.1	1.27	-20.3 <0.001	
Sense of community	0.7	1.05	180.6 <0.001	
Increased efficiency/productivity	-0.3	1.03	-89.4 <0.001	
More relaxed as more time at home	0.2	1.18	61.2 <0.001	
Better sleep as more spare time	-0.4	1.14	-99.6 <0.001	
More purpose to work	-0.3	1.08	-88.3 <0.001	
Able to exercise more	0.1	1.33	12.8 <0.001	
Quieter/more relaxing external environment	1.0	1.14	247.8 <0.001	
More time to read for pleasure	0.5	1.15	125.4 <0.001	
Work less stressful as doing it from home	-0.2	1.11	-47.5 <0.001	
More time on hobbies	0.1	1.22	29.8 <0.001	
Spending less and saving more	0.8	1.10	218.1 <0.001	
Less tired	-0.2	1.11	-51.0 <0.001	
Better connected	0.3	1.01	86.5 <0.001	
More wildlife	0.9	0.90	289.3 <0.001	
Appreciating simple things in life more	0.8	0.94	245.6 <0.001	
Less stressed by daily responsibilities	0.2	1.14	60.2 <0.001	
Drinking more	0.0	1.02	11.1 <0.001	
Smoking more	0.0	0.42	-8.4 <0.001	
Belief that the world will be a better place	0.1	1.08	20.3 <0.001	
Belief that the negative economic impact	-0.7	1.23	-153.6 <0.001	
Things will change, not always for the worst	0.4	1.01	124.4 <0.001	
We can cope better with global issues like	-0.2	1.20	-37.0 <0.001	
Healthcare/technology will improve more	0.4	1.04	111.0 <0.001	
Communications apps have meant more	1.2	0.87	374.1 <0.001	



Appendix 3c - PD-GIS-11 vs Mood Self Assessment

Bivariate correlation of Mood Assessment and PD-GIS-11

	More time, less stressed/tired	Isolated and disrupted lifestyle	Positive outlook	Conflict at home	Increased health obsession	Increased productivity and structure at work	Improved environment	Concern about less healthy lifestyle	More time for people	Better connected	Better sleep
-0.07	0.22	-0.05	0.15	0.24	-0.08	-0.01	0.06	0.06	-0.03	-0.16	
-0.06	0.20	-0.03	0.14	0.24	-0.06	-0.02	0.06	0.04	-0.09	-0.16	
-0.05	0.21	-0.03	0.15	0.24	-0.06	-0.01	0.07	0.06	-0.07	-0.16	
-0.10	0.21	-0.02	0.15	0.19	-0.04	-0.01	0.09	0.05	-0.06	-0.21	
-0.05	0.19	0.00	0.13	0.11	-0.03	-0.01	0.05	0.05	-0.08	-0.15	
-0.07	0.13	-0.04	0.33	0.10	-0.07	-0.02	0.09	0.09	-0.02	-0.12	
-0.03	0.17	-0.02	0.12	0.30	-0.05	-0.01	0.06	0.05	-0.11	-0.13	
-0.06	0.21	-0.04	0.17	0.10	-0.12	-0.10	0.13	-0.01	-0.12	-0.11	
-0.07	0.26	-0.05	0.18	0.15	-0.10	-0.06	0.09	-0.02	-0.10	-0.15	
-0.09	0.15	-0.01	0.14	0.14	-0.09	-0.06	0.21	0.04	-0.07	-0.19	
-0.03	0.22	-0.02	0.14	0.12	-0.10	-0.05	0.10	0.03	-0.08	-0.14	
-0.07	0.13	-0.01	0.08	0.13	-0.05	0.00	0.17	-0.02	-0.07	-0.37	
0.16	0.04	0.02	0.01	-0.09	-0.05	-0.04	-0.12	0.03	0.05	0.22	

SELF-PERCEIVED IMPACT

MOOD STATE

Nervous, anxious or on edge
Can't stop worrying
Worry about different things
Trouble relaxing
Restless, can't sit still
Annoyed/irritable
Afraid something awful might happen
Little pleasure doing things
Down or depressed
Tired/ little energy
Trouble concentrating
Can't get to sleep or stay asleep
Hrs slept per night

Canonical correlation of Mood Assessment and PD-GIS-11

Mode	r	p
M01	0.62	0.0000
M02	0.38	0.0000
M03	0.30	0.0000
M04	0.27	0.0000
M05	0.19	0.0000
M06	0.16	0.0000
M07	0.12	0.0000
M08	0.09	0.0000
M09	0.03	0.0000
M10	0.01	0.0039
M11	0.01	0.0908

Appendix 3d - PD-GIS-11 vs socio-demographic, economic and context variables

P values for main effects and covariates

	More time, less stressed/tired	Isolated and disrupted lifestyle	Positive outlook	Conflict at home	Concern about health	More engaged in work	Improved environment	Worried about less healthy lifestyle	Better connected	Better sleep
Age	0.0000	0.0000	0.0276	0.0000	0.0000	0.0000	0.0000	0.6101	0.0000	0.0000
Sex	0.0000	0.0000	0.0000	0.4031	0.0000	0.0000	0.0000	0.0000	0.7447	0.0000
Handedness	0.0008	0.4508	0.2319	0.0058	0.1020	0.0000	0.0000	0.1073	0.5253	0.0000
First language	0.0036	0.0000	0.0000	0.0161	0.0000	0.0002	0.0000	0.0000	0.0064	0.0000
Ethnicity	0.0000	0.0000	0.0000	0.0821	0.0000	0.0001	0.0000	0.0000	0.1782	0.0355
Country of residence	0.3401	0.0577	0.1437	0.7074	0.1650	0.0921	0.0000	0.2162	0.9102	0.0257
Education	0.0000	0.0000	0.0000	0.0793	0.0005	0.0000	0.0000	0.0000	0.0000	0.0000
Relationship status	0.0003	0.0000	0.0000	0.0000	0.1993	0.0000	0.0000	0.0000	0.0000	0.0038
Home context	0.0021	0.0000	0.0948	0.1971	0.0000	0.0000	0.0899	0.0000	0.4235	0.0000
Work arrangements	0.0000	0.0000	0.0000	0.0000	0.0000	0.0000	0.0000	0.0000	0.0000	0.0000
income negatively affected	0.0004	0.0000	0.0000	0.0098	0.0344	0.0000	0.0000	0.0000	0.0000	0.0000
Live with adult children	0.3224	0.0000	0.0639	0.0000	0.0000	0.0000	0.9533	0.0000	0.0000	0.0001
Live with school children	0.0000	0.0000	0.0000	0.0000	0.0000	0.0018	0.0204	0.0000	0.0257	0.4201
Live with flat/house mates	0.3664	0.0000	0.2713	0.8112	0.5142	0.0490	0.1062	0.1360	0.0000	0.0013
Live with friends	0.6406	0.0038	0.8304	0.9690	0.0597	0.0026	0.8928	0.0000	0.8154	0.1922
Live with grandparents	0.5876	0.9671	0.0311	0.9615	0.0858	0.0678	0.0947	0.0595	0.0034	0.0183
Live with home schooled children	0.0000	0.0000	0.0004	0.0000	0.0807	0.6944	0.3407	0.0000	0.0000	0.6146
Live with inlaws	0.4229	0.9862	0.5449	0.0000	0.6215	0.2190	0.3502	0.9156	0.0026	0.4888
Living alone	0.0000	0.0000	0.1134	0.0000	0.0001	0.0689	0.0357	0.0399	0.0000	0.0009
Live with parents	0.3358	0.4580	0.2804	0.0000	0.0000	0.0001	0.0012	0.0291	0.0000	0.4047
Live with partner	0.8534	0.0000	0.6762	0.0000	0.1969	0.0001	0.2265	0.0000	0.0081	0.1210
Live with opreschoolchildren	0.0000	0.0000	0.0010	0.0000	0.3959	0.0033	0.5903	0.0000	0.3720	0.0000
Home has a balcony	0.1446	0.0378	0.6250	0.1771	0.6461	0.1743	0.0000	0.8529	0.2247	0.0000
Home has a large garden	0.3269	0.7997	0.1754	0.1725	0.0000	0.4632	0.0000	0.0416	0.0000	0.0007
Home ha no outside space	0.0001	0.0000	0.0184	0.6853	0.2478	0.0943	0.0000	0.0070	0.3855	0.0032
Home has overlooked outside space	0.0000	0.0000	0.0000	0.0052	0.0000	0.0031	0.0000	0.0000	0.0485	0.2418
Home has private outside space	0.1138	0.8028	0.9083	0.6361	0.1114	0.7591	0.0282	0.0353	0.6399	0.9529
Home has relaxing outside space	0.0000	0.0000	0.0000	0.0000	0.1468	0.7779	0.0000	0.0000	0.0000	0.7593
Home has a small garden	0.0437	0.0079	0.6313	0.9556	0.2394	0.0192	0.1054	0.7452	0.0004	0.0050
Home has unpleasant outside space	0.0000	0.0051	0.0000	0.0000	0.0008	0.0000	0.0000	0.0000	0.0006	0.0011
error	0.5000	0.5000	0.5000	0.5000	0.5000	0.5000	0.5000	0.5000	0.5000	0.5000

F values

	More time, less stressed/tired	Isolated and disrupted lifestyle	Positive outlook	Conflict at home	Concern about health	More engaged in work	Improved environment	Worried about less healthy lifestyle	Better connected	Better sleep
161	1079	5	188	190	154	433	0	1242	447	246
88	57	176	1	413	8	342	24	0	57	115
7	1	1	5	2	17	15	2	1	18	8
8	164	30	6	113	14	65	82	7	109	29
24	10	17	2	18	5	11	16	1	2	2
1	4	2	0	2	3	34	2	0	5	0
12	45	78	2	5	7	6	109	48	137	7
5	30	6	15	1	8	9	9	45	20	3
3	6	2	1	9	6	2	28	1	14	1
413	55	12	12	21	169	71	25	48	111	46
13	1749	164	7	4	99	132	146	689	1719	192
1	83	3	88	18	27	0	60	81	40	16
87	127	18	691	63	10	5	201	640	5	1
1	53	1	0	0	4	3	2	361	10	0
0	8	0	0	4	9	0	27	0	2	2
0	0	5	0	3	3	0	4	9	6	1
71	35	12	287	3	0	1	27	486	0	1
1	0	0	18	0	2	1	0	9	0	0
32	156	3	26	16	3	4	4	1477	11	8
1	1	1	390	43	16	10	5	140	1	0
0	116	0	29	2	15	1	35	35	7	2
916	34	11	373	1	9	0	79	761	1	73
2	4	0	2	0	2	18	0	1	23	2
1	0	2	2	29	1	26	4	23	12	0
14	33	6	0	1	3	38	7	1	9	1
20	30	19	8	30	9	21	73	4	1	4
3	0	0	0	3	0	5	4	0	0	4
81	21	19	39	2	0	55	25	41	118	0
4	7	0	0	1	5	3	0	13	8	1
35	8	21	18	11	19	42	89	12	11	6
1	1	1	1	1	1	1	1	1	1	1

Coefficient estimates

(Intercept)	0.45	1.38	-0.11	0.06	-0.24	-0.43	-0.14	-0.47	1.05	0.09	-0.73
age	-0.01	-0.02	0.00	-0.01	0.01	0.01	0.01	0.00	-0.02	-0.01	0.01
male	-0.14	-0.12	-0.20	-0.01	-0.32	0.04	-0.31	-0.08	0.00	-0.14	0.21
female	0a	0a	0a	0a	0a	0a	0a	0a	0a	0a	0a
other	-0.20	0.00	0.13	0.03	-0.06	0.00	-0.18	0.00	-0.06	-0.45	-0.02
Left handed	-0.02	-0.01	-0.01	0.01	0.02	0.00	0.08	-0.00	-0.02	0.00	-0.03
Right handed	0a	0a	0a	0a	0a	0a	0a	0a	0a	0a	0a
Ambidextrous	-0.09	-0.03	0.04	-0.08	-0.05	0.16	0.06	0.06	0.00	-0.20	-0.13
First Language_english	0a	0a	0a	0a	0a	0a	0a	0a	0a	0a	0a
FirstLanguage_Other	0.05	-0.26	-0.11	-0.04	0.21	0.07	-0.17	-0.19	-0.05	-0.25	0.13
Mixed ethnicity	0.11	-0.13	-0.04	0.03	0.08	-0.01	-0.08	0.12	-0.01	-0.03	-0.03
Unknown/other	0.20	-0.12	0.19	0.04	0.20	0.10	-0.14	0.18	0.01	-0.06	0.07
Sub-saharan African or Afro-american	0.41	-0.36	0.05	-0.11	0.16	-0.05	-0.37	0.29	-0.14	0.22	0.06
North African	0.21	0.05	0.27	-0.05	-0.12	0.00	-0.24	-0.01	-0.22	-0.14	0.21
West-central Asian	0.14	-0.04	0.19	0.09	0.26	0.14	-0.17	0.29	0.05	-0.07	-0.01
White european/american	0a	0a	0a	0a	0a	0a	0a	0a	0a	0a	0a
Country of residence is other	0.02	-0.03	-0.02	-0.01	0.02	0.03	-0.10	-0.02	0.00	0.05	0.01
Country of residence is UK	0a	0a	0a	0a	0a	0a	0a	0a	0a	0a	0a
Secondary school/High school diploma	-0.05	-0.13	0.14	-0.01	0.04	0.00	-0.04	0.20	-0.12	-0.25	-0.06
PhD	-0.10	-0.04	-0.13	-0.03	-0.04	-0.07	-0.08	-0.05	0.07	0.02	-0.04
Primary/Elementary school	-0.10	-0.19	0.23	0.02	0.05	-0.03	0.04	0.26	-0.11	-0.45	-0.09
No schooling	-0.09	-0.08	0.34	0.21	0.02	0.48	0.16	0.29	-0.21	-0.67	-0.34
University degree	0a	0a	0a	0a	0a	0a	0a	0a	0a	0a	0a
Single	0.07	-0.11	0.00	0.04	-0.03	-0.11	-0.12	0.10	-0.27	-0.19	-0.09
In a relationship	0.04	0.00	-0.01	0.09	0.00	-0.03	-0.01	0.00	-0.10	-0.10	-0.01
Divorced	0.10	0.02	0.04	-0.05	-0.03	-0.09	-0.03	0.15	-0.12	0.02	-0.03
Widowed	0.06	0.22	0.16	-0.04	-0.04	-0.01	-0.11	0.06	0.01	-0.17	0.02
Seperated	0.01	0.21	0.01	0.06	-0.10	-0.06	0.03	0.06	-0.13	-0.11	-0.08
Married	0a	0a	0a	0a	0a	0a	0a	0a	0a	0a	0a
Other	0.01	-0.21	0.00	-0.01	0.00	-0.01	-0.12	0.05	0.07	-0.19	-0.14
Semi	0.03	-0.03	0.01	-0.02	0.07	-0.04	0.00	0.12	0.00	-0.06	-0.01

It is made available under a [CC-BY-NC-ND 4.0 International license](https://creativecommons.org/licenses/by-nc-nd/4.0/).

medRxiv preprint doi: <https://doi.org/10.1101/2020.06.18.20134635>; this version posted August 4, 2020. The copyright holder for this preprint (which was not certified by peer review) is the author/funder, who has granted medRxiv a license to display the preprint in perpetuity.

Flat	0.05	-0.06	-0.03	-0.04	0.09	-0.10	-0.04	0.11	0.01	0.05	0.02
Terrace	0.05	-0.07	-0.02	-0.03	0.05	-0.05	0.01	0.18	0.00	-0.02	0.00
River home	-0.12	-0.09	0.12	-0.04	-0.10	-0.03	0.07	0.10	0.16	-0.29	-0.01
Bungalow	0.02	-0.04	0.03	0.00	0.07	0.00	-0.02	0.10	0.00	-0.17	-0.01
Detached	0a	0a	0a	0a	0a	0a	0a	0a	0a	0a	0a
Retired	-0.21	0.21	0.06	0.10	0.08	0.20	-0.13	-0.03	-0.24	0.39	0.20
Student	-0.06	0.29	0.24	0.20	-0.12	-0.12	-0.20	0.03	-0.05	0.17	0.16
working from home	0.04	0.05	0.06	0.08	-0.02	0.33	-0.28	0.17	0.08	0.44	0.03
Disabled/Not applicable/Sheltered employment	-0.46	-0.20	-0.01	0.08	0.50	0.06	-0.03	0.41	-0.03	-0.57	-0.15
Unemployed/Looking for work	0.00	0.15	-0.01	0.09	-0.03	0.06	-0.11	0.07	-0.03	-0.16	-0.16
furloughed	0.52	0.01	0.09	0.06	-0.02	-0.20	-0.11	0.09	-0.03	0.18	-0.17
other frontline health worker	-0.60	-0.09	0.15	0.02	0.01	0.46	0.11	0.15	-0.08	0.08	0.30
working in the office/lab/ other workplace	-0.46	-0.12	0.06	0.01	-0.01	0.37	0.00	0.08	-0.10	0.21	0.20
health worker with coronavirus patients	-0.94	-0.09	0.15	-0.02	-0.01	0.67	0.25	0.09	-0.12	0.06	0.34
retail of other job involving interaction with the public	-0.40	-0.14	0.10	0.00	0.08	0.31	0.08	0.07	-0.07	0.03	0.15
Homemaker	-0.25	-0.05	0.02	0.08	0.15	0.24	-0.09	0.12	-0.04	0.00	0.10
other work	0a	0a	0a	0a	0a	0a	0a	0a	0a	0a	0a
Income negatively affected by pandemic	0.03	0.45	-0.13	0.02	-0.02	-0.10	0.13	-0.13	0.26	-0.53	-0.18
Live with adult children	0.01	-0.12	0.02	0.11	-0.06	-0.06	0.00	0.11	0.11	-0.10	-0.06
Live with school children	-0.11	-0.15	0.05	0.30	-0.10	-0.04	0.03	0.20	0.32	-0.04	-0.01
Live with flat/house mates	0.02	0.22	0.03	0.01	0.02	-0.06	-0.05	-0.05	-0.53	0.11	-0.01
Live with friends	0.02	0.10	0.01	0.00	-0.07	-0.10	0.00	-0.19	-0.01	0.06	-0.06
Live with grandparents	-0.03	0.00	0.14	0.00	0.11	0.12	0.00	0.13	-0.18	-0.19	-0.07
Live with home schooled children	-0.15	-0.12	0.07	0.29	-0.03	-0.01	0.02	0.11	0.41	-0.01	0.02
Live with inlaws	0.03	0.00	0.03	0.16	-0.02	-0.05	0.04	0.00	-0.13	-0.04	-0.03
Living alone	0.11	0.27	0.03	-0.10	-0.08	0.04	-0.05	0.05	-0.78	0.09	-0.07
Live with parents	-0.02	-0.02	0.02	0.38	0.14	-0.08	-0.07	-0.05	-0.25	0.02	0.01
Live with partner	0.00	-0.21	-0.01	0.09	0.02	-0.07	0.02	0.12	0.11	0.06	0.04
Live with opreschoolchildren	-0.52	-0.11	0.06	0.32	0.02	0.05	-0.01	0.18	0.49	0.02	0.19
Home has a balcony	0.03	0.05	0.01	0.03	-0.01	0.03	-0.11	0.00	0.03	0.14	0.04
Home has a large garden	0.02	-0.01	0.03	-0.02	-0.11	-0.01	0.11	-0.04	0.09	0.08	-0.01
Home ha no outside space	-0.10	0.16	-0.06	0.01	0.03	-0.04	-0.18	0.08	0.02	0.10	0.03
Home has overlooked outside space	-0.06	0.09	-0.07	0.04	0.09	-0.04	-0.08	0.14	0.03	-0.02	-0.04
Home has private outside space	-0.02	0.00	0.00	-0.01	-0.02	0.00	-0.03	0.03	-0.01	0.00	-0.04
Home has relaxing outside space	0.11	-0.06	0.05	-0.07	-0.02	0.00	0.10	-0.07	0.08	0.17	0.00
Home has a small garden	-0.04	0.05	-0.01	0.00	-0.02	-0.04	0.03	0.01	0.07	0.07	0.03
Home has unpleasant outside space	-0.20	0.10	-0.16	0.13	0.12	-0.15	-0.24	0.36	-0.12	-0.14	-0.11

Observations

16	709
17	676
18	692
19	701
20	702
21	733
22	773
23	879
24	882
25	1041
26	1138
27	1215
28	1289
29	1322
30	1335
31	1268
32	1346
33	1248
34	1163
35	1168
36	1208
37	1115
38	1246
39	1439
40	1399
41	1285
42	1341
43	1278
44	1293
45	1552

46	1497
47	1521
48	1631
49	1720
50	1808
51	1596
52	1652
53	1710
54	1746
55	1847
56	1695
57	1654
58	1647
59	1583
60	1628
61	1460
62	1452
63	1411
64	1354
65	1313
66	1183
67	1121
68	977
69	857
70	852
71	711
72	733
73	642
74	378
75	352
76	278
77	220
78	162
79	153
80	123
81	86
82	98
83	66
84	39
85	44
86	117
Female	40844
Male	33402
Other	290
unknown	17
Ambidextrous	1915
Left handed	8014
Right handed	64624
English	70191
Other	4362
Mixed ethnicity	1630
North African	119
Rom, Sinti or B	48
Sub-saharan A	213
Unknown	3803
West-central A	224
White Europea	68516
United Kingdor	68720
other	5833
01 No schoolin	90
02 Primary/Ele	1493
03 Secondary s	26569
04 University d	43328
05 PhD	3073
Divorced	3208
In a relationshi	15779
Married	37595
Seperated	1140
Single	14995
Widowed	1836
Flat	11263
bungalow	4090
detached hous	24149

other	633
river home	182
semideteched	21526
terraced house	12710
Disabled/Not a	777
Homemaker	2405
Retired	14506
Student	5630
Unemployed/L	2340
furloughed	6798
health worker	1714
other	4143
other frontline	2873
retail of other j	2114
working from h	26782
working in the	4471
Income affecte	53093
Income affecte	21460
livewithadultc	12308
livewithatscho	12108
livewithflatho	2343
livewithfriends	1354
livewithgrandp	354
livewithhomes	4408
livewithinlaws	776
livewithlivingal	10179
livewithparent:	9790
livewithpartnei	47427
livewithpresch	5017
outsidespacebi	4132
outsidespacela	30258
outsidespacec	4301
outsidespaceov	7280
outsidespacepr	14131
outsidespacere	19083
outsidespacesr	33592
outsidespaceur	1241

Appendix 3e - PD-GIS-11 vs preexisting conditions

P values for main effects and covariates

	More time, less stressed/lived	Badged and diagnosed illness	Positive outlook	Conflict at home	Concern about health	Increased productivity and structure at work	Improved environment	Worried about less healthy lifestyle	More time for people	Better connected	Better sleep
Anxiety	0.9422	0.0175	0.0209	0.2570	0.0000	0.3450	0.0552	0.0000	0.0122	0.0000	0.0000
ADHD	0.9137	0.1100	0.2172	0.0003	0.0296	0.6573	0.1503	0.0794	0.1549	0.0065	0.8752
Bipolar	0.9920	0.4420	0.2528	0.0839	0.2866	0.6157	0.0066	0.0530	0.2767	0.0001	0.0185
Depression	0.0002	0.0000	0.0000	0.0000	0.2145	0.0000	0.0889	0.0000	0.0001	0.0000	0.0000
OCD	0.7239	0.1403	0.3296	0.1411	0.0000	0.5852	0.0562	0.8710	0.1563	0.1377	0.7220
Other psychiatric	0.2140	0.0015	0.4172	0.0580	0.0432	0.0740	0.6014	0.0487	0.6004	0.0009	0.0247
Learning disability	0.0338	0.1039	0.1436	0.2853	0.5229	0.0562	0.2429	0.0131	0.8848	0.0000	0.4263
Dementia	0.8385	0.0000	0.0000	0.2052	0.0599	0.4425	0.0323	0.0639	0.0038	0.0020	0.8247
Motor neuron	0.3803	0.6229	0.3621	0.6744	0.3220	0.2179	0.0937	0.2852	0.2950	0.0311	0.7882
Multiple Sclerosis	0.0620	0.8261	0.6168	0.4905	0.1757	0.1980	0.6721	0.2287	0.8489	0.1928	0.7366
Stroke	0.4021	0.4455	0.0123	0.6551	0.7999	0.8189	0.2222	0.8244	0.0485	0.0046	0.5661
Cerebral palsy	0.0811	0.1921	0.4014	0.0410	0.5207	0.1687	0.7709	0.4560	0.6989	0.0205	0.7608
Other neurological	0.3592	0.0364	0.7452	0.0102	0.0364	0.0259	0.7626	0.0000	0.1030	0.0000	0.8597
Traumatic brain injury	0.3939	0.9740	0.4088	0.7804	0.9743	0.6306	0.0361	0.3077	0.3845	0.3068	0.6753
Huntington's	0.5716	0.4903	0.6536	0.8417	0.0593	0.7244	0.7799	0.8856	0.8992	0.4865	0.3320
Parkinson's	0.5189	0.9089	0.6965	0.8799	0.2291	0.9350	0.0038	0.6770	0.8220	0.3472	0.2081
Error	0.5000	0.5000	0.5000	0.5000	0.5000	0.5000	0.5000	0.5000	0.5000	0.5000	0.5000

Coefficient estimates

(Intercept)	N	0.008874999	-0.02253887	0.002245452	-0.01988298	-0.03553512	6.26E-03	-0.00475401	-0.03958209	0.003004609	0.0322301512	0.041376963
Anxiety	10210	0.00	0.03	0.03	0.01	0.25	-0.01	0.02	0.07	0.03	-0.08	-0.13
ADHD	449	-0.01	0.08	0.06	0.17	-0.10	-0.02	-0.07	0.08	0.07	-0.13	0.01
Bipolar	350	0.00	0.04	0.06	-0.09	-0.06	-0.03	-0.15	0.10	0.06	-0.21	-0.13
Depression	10214	-0.05	0.13	-0.06	0.10	-0.02	-0.05	0.02	-0.18	-0.05	-0.07	-0.15
OCD	797	-0.01	-0.05	0.04	0.05	0.25	0.02	-0.07	0.01	-0.05	-0.05	0.01
Other psychiat	1099	-0.04	0.10	-0.03	0.06	-0.06	0.06	0.02	-0.06	0.02	-0.10	-0.07
Learning disabi	856	-0.07	-0.06	0.05	0.04	0.00	0.07	0.04	0.09	-0.01	-0.16	-0.03
Dementia	47	-0.03	-0.65	-0.64	0.19	-0.28	-0.12	-0.32	0.28	-0.45	-0.46	0.03
Motor neuron	26	0.18	0.10	0.19	0.09	-0.21	0.26	-0.35	-0.22	-0.22	-0.45	0.06
Multiple Sclerc	234	-0.12	-0.01	-0.03	0.05	0.09	-0.08	0.03	-0.08	0.01	-0.09	0.02
Stroke	430	0.04	0.04	0.12	0.02	0.01	-0.01	-0.06	-0.01	0.10	-0.14	-0.03
Cerebral palsy	54	0.24	0.18	-0.12	-0.29	0.09	0.19	0.04	0.10	-0.05	-0.32	-0.04
Other neurolog	1856	-0.02	-0.05	0.01	0.06	0.05	0.05	0.01	0.11	-0.04	-0.13	0.00
Traumatic brai	99	-0.09	0.00	0.08	-0.03	0.00	0.05	-0.21	0.10	0.09	-0.10	-0.04
Huntington's	19	-0.14	-0.17	0.11	0.05	-0.46	-0.09	-0.07	-0.04	-0.03	-0.17	0.24
Parkinson's	120	-0.06	-0.01	0.04	-0.01	0.11	-0.01	-0.27	0.04	-0.02	0.09	-0.12

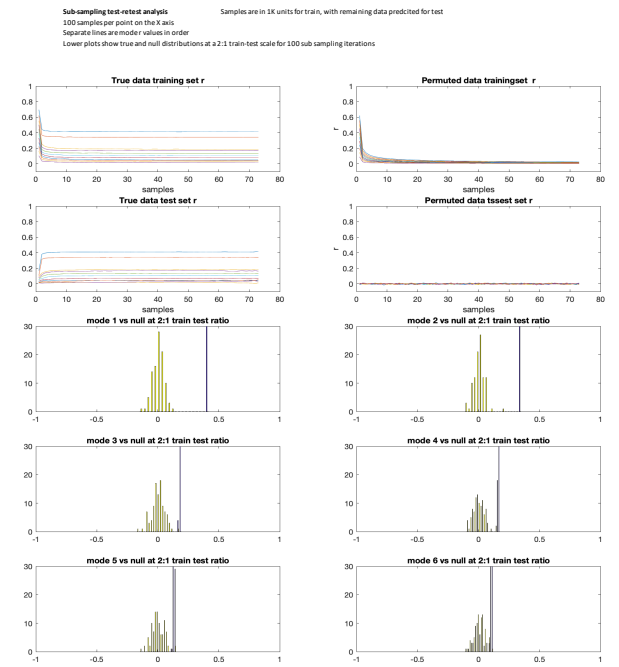
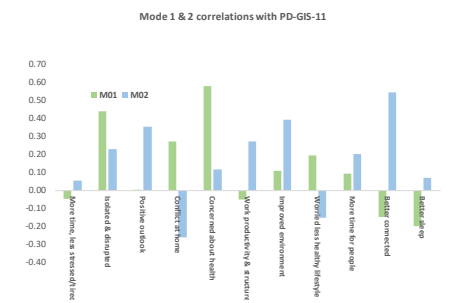
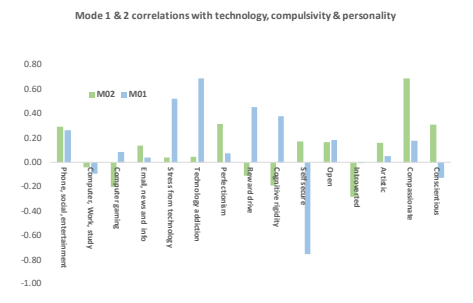
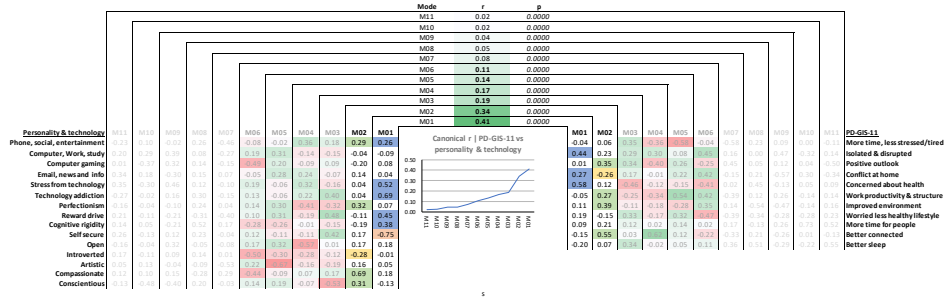
F values

	More time, less stressed/lived	Badged and diagnosed illness	Positive outlook	Conflict at home	Concern about health	Increased productivity and structure at work	Improved environment	Worried about less healthy lifestyle	More time for people	Better connected	Better sleep
0	6	3	2	13	5	1	393	1	4	30	101
0	3	2	1	3	1	0	2	2	3	7	0
0	1	1	1	3	1	0	7	4	1	15	6
14	110	21	58	2	17	3	212	16	27	145	
0	2	1	2	47	0	4	0	2	2	0	
2	10	1	4	4	3	0	4	0	11	5	
5	3	2	1	0	4	1	6	0	22	1	
0	19	18	2	4	1	5	3	9	10	0	
1	0	1	0	1	2	3	1	1	5	0	
3	0	0	0	0	2	0	1	0	2	0	
0	1	6	0	0	0	1	0	4	8	0	
3	2	1	4	0	2	0	1	0	5	0	
1	4	0	7	4	5	0	20	3	31	0	
0	0	0	0	0	4	0	0	0	0	1	
0	0	0	0	0	1	0	8	0	1	2	
1	1	1	1	1	1	1	1	1	1	1	

Incidence %

Observations	Group
12.76	10210 Anxiety
0.56	449 ADHD
0.44	350 Bipolar
12.77	10214 Depression
1.00	797 OCD
1.37	1099 Other psychiatric
1.07	856 Learning disability
0.06	47 Dementia
0.03	26 Motor neuron
0.29	234 Multiple Sclerosis
0.54	430 Stroke
0.07	54 Cerebral palsy
2.32	1856 Other neurological
0.12	99 Traumatic brain injury
0.02	19 Huntington's
0.15	120 Parkinson's

Appendix 3g - PD-GIS-11 vs traits and technology variables



Appendix 5a - negative topics (zoom to read)

Negative Topics

Perplexity index suggests just 5 topics for the negatives

Data cleaned/preprocessed, lemmatised and tokenised prior to LDA modelling, optimal model order determined by selection of lowest perplexity index

Here are the top 10 exemplars of each

Not being able to see relatives

- "not seeing grandson, son, daughter in law, daughter, son in law, especially not being able to travel to visit dad who had a heart attack and was in hospital"
- "missing family, seeing my mum, brother and nieces, cuddling family members - having that physical connection"
- "bereavement being unable to see and hug family members especially at the funeral, missing contact with close friends just not being able to socialize"
- "miss my parents, wider family and friends, miss family gatherings and grandparents spending time with children"
- "not being able to see close family not being able to hug family not being able to be with close friends and family"
- "being unable to visit elderly parents, not being able to visit or physically touch friends, especially those grieving"
- "being unable to visit/care for elderly parent living 200miles away especially on 95th birthday and being unable to visit newly born child in family in scotland."
- "not being able to see my parents, sister, nieces and in laws, my parents are missing out on my baby growing up and i miss the hugs."
- "not being able to spend time with extended family and not being able to have a proper funeral for my gran not being able to give them hugs."
- "not being able to hold a proper funeral for my grandad or hugging and physically spending time with family members and close friends"

Problems with working and schooling from home

- "both i and my husband are keyworkers, my daughter (11) goes to school hub... frequently being the only pupil in her class. i feel guilty for not being able to stay home with her. feel she is missing out on the quality time her peers are having, due to working hours (9-5) very little time left in evening for quality time with her... trying to make sure she is up date with school work (very little school work completed) at hub... so no peer support left to go on with it."
- "the balance between working from home and supporting the children in their school work it's very difficult and stressful at times and can cause more bickering/increased tension can cause a few more marital arguments. i feel i'm easily distracted at home and snack more which is not healthy i also feel the days are rolling into one and then becoming monotonous as we can't do anything new or different as it usually involves leaving the home to do this."
- "trying to work from home whilst partner works during the day i look after children then i start work once they are in bed so very late nights for me. it's almost back to a 1950's house where the woman cooks cleans and looks after children with the 21st century spin of working on top of all of that!"
- "spending more time with my young children! am working from home full time, my wife part time. this has been very difficult at times with 2 pre schoolers and can feel like i am not parenting or completing my paid work as well as before"
- "having to teach myself my a-levels is hard. i am also used to having all the school's resources (access to a workshop) which i no longer have. also i am worried that if lots of students this year defer a year before going to university, my year of application will be very competitive and my year may not have as good results due to fewer hours spent with a teacher."
- "i dont mind it adult children dont like they are not allowed in and argue with me on the door step. dont really like working from home i run a help line more suicide calls id rather deal with these in a team and not at home, feel more tired so no using time effectively, drink 1 glass red wine every few days. not doing my homework for a course feel unfocused more tired work more demanding lucky to have a job though"
- "dramatic increase in how tired i feel which makes doing my uni work from home incredibly difficult. i am far less productive. i feel stressed as i feel i should be spending time on my hobbies, doing something new in lockdown, but instead i am spending all my time trying to write essays for uni and not doing them very well as i am tired/unproductive."
- "my wife still works full time, with a long commute. i care for our 2 year daughter upto 14 hours a day, but still feel pressure to deliver work from home."
- "both my husband and myself trying to work from home and look after (home schooler) a 5 year and 7 year old has been very stressful. i have much less time in the day to try and get stuff done. no cleaner or ironing lady has added to the stress. the situation is near impossible because the schools are not open."
- "no school means problems as we have a small child and i have full time work from home but my husband who's a full time dad has no relief which is stressful. feel guilty about having to work so much when i am here."

Disruption of social and recreational activities

- "not being able to visit family and friends whom normally i would see daily or weekly, not being able to attend weekly church services, not being able to visit local shops daily, nor to travel short distances to shop further from home, not being able to go to the gym, to a weekly tai chi class and the choir, not being able to invite friends into our house, nor to go to their houses, not being able to visit the library, nor an gallery, or museum in the city, and not being able to attend concerts or plays"
- "being unable to visit family who are scattered across the country, and being unable to participate in my hobbies such as going dancing with friends, on holidays and weekends away, and attending daily social exercise classes at the local leisure centre."
- "freedom of movement, cannot just hop in the car to local pub or shops, miss the social interaction with the village group of oldies when we would meet for a pint and a natter in the local pub. also miss local village activities and clubs"
- "queuing for supermarkets and farm shops, garden centres being shut to get my garden and greenhouse plants/w and flower club not taking place and cancelled holiday with friends to brazil and peru"
- "not being able to take my dog on the walks he enjoys (country parks) as the were closed. meeting socially with friends - having coffee/lunch/dinner, not being able to attend exercise classes."
- "boredom, no socialising, pub visits, informal chats in the shops, cafes closure of public places, restaurants, sporting and cultural activities."
- "inability to go to regular social events: pub quizzes, knitting group, uni activities, closure of local recycling centre, garden centre, pubs, hairdresser"
- "miss spontaneity of going for a walk and popping into the pub for a couple of pints or getting dinner, not able to get some food, and do not want to be in supermarkets, not being able to play tennis, and not being able to meet with friends."
- "unable to see parents/siblings and their families, unable to go out to restaurants, cinema, theatres etc, unable to go out for the day to the seaside or a local countryside settings such as the canal for walks etc."
- "cancelled holiday, cancelled trips, no driving/riding out for the day, can't go to garden centre, can't meet up with friends, no restaurants open, missed a birthday celebration."

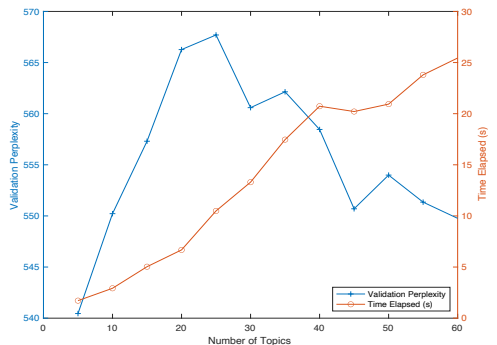
Physical and mental health concerns

- "lives being lost due to depression, more people suffering due to abuse (less support), financial problems, losing jobs, future problems with the economy, the general cost this is causing the young who are the future"
- "lack of social contact - lack of decent access to healthcare, concerns about personal health and that of loved ones, lack of contact with grandchildren"
- "loss of support network, fear of health implications, impact on physical and mental health, increase in expenses and uncertainty regarding finances."
- "number of deaths, job losses and long term impact on economy, negative impact on many peoples quality of life could be long term, less career opportunities for young, education affected"
- "anxiety about health and loved ones, isolation and lack of socialisation, worry about the economy and the future of my job and the hospitality business"
- "the feeling of lack of purpose, loss of routine, long term will be loss of a business and therefore a huge life change."
- "separation from loved ones for most people, loss of employment/income for many, fear and worry about health and future."
- "growing rates of domestic abuse and peoples concern for loved ones, worry about the future state of the economy and jobs."
- "loss of retirement income due to business failure, worry about elderly relatives, worry about children's jobs and economic impact on their future"
- "worry about health of myself and loved ones, worry about future job security due to economic impact and impacts on the industry sector i work in."

Politics, government, and media.

- "the fact that the public are being made to feel responsible for whether or not the rns and their staff can get through this crisis, the coping of the rns is not the public's responsibility, it is the responsibility of government, had we not had 10 years of Tory cuts to the rns and social care, we may have coped better. the way the crisis was handled from the start was terrible - the slow response of government, the arrogant way we wanted to do things our own way rather than model better countries like germany - now their economy will recover far faster than ours as they acted quicker and realised that the key was to test more - the ppe shortages in care homes and the rns were a disaster too - a disgrace, people seem to have forgotten very quickly how in his first budget, rishi sunak did nothing for the social care system...yet now boris says how sorry he is. the truth is the Tories really do not care about the rns and social care, we just need the public to realise this and stop believing Boris' lies!"
- "the british press to not celebrate the positive, they have not given the government any credit for the calm and controlled way they have dealt with the crisis, instead they ask the same question over and over again and focus on the negative elements and how many people have unfortunately lost their lives rather than celebrating those who have recovered, they also show graphs and numbers that do not give the correct impression, showing absolute figures instead of per capita is totally misleading, equally talking about new Zealand who is more sheep than people and fewer people that we have in london is again a pointless and scaremongering approach"
- "while many people are following government advice, many other people are still disregarding it and expecting that they will not be affected. this is negative for a few reasons, firstly, and most obviously, those people are allowing the virus to spread, secondly, this causes another division - between the careful and the careless, and whatever the outcome of this crisis may be, this division of opinion is just another thing people will argue about."
- "the reasons so many have suffered during this pandemic are down to the current Tory governments political decisions, now and over the last decade, they don't value or respect the people they govern (allegedly), or anyone who isn't like them, they don't even hold their own to account (unlected on the public payroll) when they flout the rules we've been forced to live by to protect each other, they hold us in contempt, it's deplorable, they are a destructive force who don't seem to know or care how to govern, they and their attitudes towards us is the most negative thing about lock down."
- "peoples attitude to social distancing and the moan of people who think it doesn't apply to them, panic buying, the government trying to make up for years of underfunding of the rns is the biggest negative, will it improve the governments view of the rns? no, it'll claim that the rns was successfully funded and ignore that we all had to pay by locking down and you can bet your boots they'll make us pay more in taxes to cover for it."
- "media coverage especially news on bbc, sky, itv and also newspapers, especially those left-leaning politically, poor behaviour of some individuals eg panic buying, too much whine signalling, incorrect analysis and presentation of statistics and surveys, too much 'fake news', the 'polarisation' of the crisis again especially by the left, the over the top 'heroisation' of the rns and other key workers, the closing down of many rns services, the 'putting down' of the uk by giving undue praise to other nations, mostly by tv and printed press, the unfair criticism of the government in its genuine efforts, too many bloggers and professors being presented as 'experts', not enough common sense being applied, the cockiness of the mostly under-30s in considering themselves not at threat, too many online/digital show-offs posting 'look at me' videos etc, not enough stoicism - ie, too many people have responded to the crisis in a hysterical or over the top manner, and also those with minority views and behaviours are being presented by media as representative of the whole nation, so overall the mode of reporting of the media emerges very badly"
- "media- disgraceful twisting and manipulation of news, no effort to report facts only to try to distort words and facts to make a story, media only looking for the worst in everything and reporting speculation and opinion as fact. i have noticed that people believe most of the completely non-factual information fed to them by the mainstream media"
- "the rush to get out of it, while i understand the economical reasons for lockdown to end, coming out of it so soon could result in an overall worse pandemic & lead to more unnecessary deaths, the general negative attitude towards lockdown is the worst part of lockdown."
- "essential workers are put at risk, when many of them didn't sign up for it or are vulnerable themselves, you constantly have to worry about people you know getting sick or dying, and know that there is no way to see them again before it happens"

"the most negative thing is watching the government back pedal and twist statistics in order to avoid panic (funny how ons data was only added when the daily death toll wouldnt be over 1000, we still don't have recovery data despite officials saying it was 'easily available' online), it has become increasingly obvious that boris johnson is just a cherto-lite version of trump, i can't believe that we are supposed to be taking him seriously when he can't even say the right words, i don't like that our country is so undereducated and selfish that we are in a position to place money and billionaires and capitalism over 50,000 lives, and that nobody took this seriously in the first place, it is honestly shocking that all the news and the media aren't reflecting the seething discontent in most of the country this guidance is 'vague' and impossible to apply to various sectors, the department for education has been slow to release information, probably because the government has been slow to create it. we live in a dystopian society, and pretty soon we will be in covid defined 'districts' like the huge games, and everybody in this country is just going to do what they are told and stick their heads in the sand, well i am telling you that this was widespread in january but nobody had any tests, to confirm it because our government would prefer to twiddle their thumbs and deal with Brexit."



Appendix 5b - positive topics (zoom to read)

Positives/Topics

Perplexity index suggests just 10 topics for the positives

Data cleaned/preprocessed, lemmatised and tokenised prior to LDA modelling, optimal model order determined by selection of lowest perplexity index

Here are the top 10 exemplars of each

More free time, including for recreation

"savings time and money not having to commute. less stress from commuting, saving money on other things. working from home, seeing my partner more, sleeping more, relaxing more. doing less."
"less time commuting, work less stressful, saving more money"
"time to spend with partner/better sleep as i'm worrying less about commuting less stress due to no commute"
"more free time at home. less commuting, work hours less rigid"
"more free time to exercise and cook healthier meals. less work stress as only working part-time and less work to do."
"having more time to exercise as having to commute less. less stressed due to work"
"working from home, no commute, more free time, saving money"
"not commuting, exercising more, drinking less and eating healthier and saving money"
"spend more time with family who are working from home and are less stressed due to not commuting but still can work productively remotely from their workplace."
"i have more time to look after me. working from home leaves me commuting time allowing me to work less hours in a day."

Better natural environment

"reduction in air pollution noise pollution fewer cars on the roads safer walking and cycling more birds and other wildlife"
"less pollution, less traffic noise, clearer skies due to reduced air traffic"
"less air, appreciation of the wildlife, less traffic, less pollution, less aircraft noise"
"less travel and associated costs, less cars on the roads. less pollution due to less road and air travel"
"less traffic on the roads, decrease in emissions, improved environment, less air traffic/clear sky"
"less noise from motorway traffic & the air is so blue, there are less planes & you can hear the birds singing"
"clearer air, less traffic, less noise can now hear birds singing"
"less traffic, less noise, more wildlife and birding. less pollution, no aeroplanes flying over, can cross the road more easily"
"clearer air due to less planes in the air also less traffic on the roads."
"quieter streets, cleaner air, less pollution, fewer cars, more bikes"

More time to focus on other important things

"been able to get house in order and complete tasks that have been put off for years"
"get to do jobs around the house that normally gets put off"
"more time with my wife. i hadn't had a proper break from work in almost a year, although i'm working from home it is like having an enforced holiday! i feel well rested for the first time in about 3 years!"
"able to get the garden jobs done that would have probably taken longer, jobs that have been put off."
"my partner has been able to stay at home with me and our 6 month old daughter which has meant that he could witness a lot of "firsts" that he would have missed if at work."
"most positive is being able to get around to jobs around the house like diy, gardening, that i don't normally get around to."
"finally getting jobs done around the house that i've been putting off"
"i am on maternity leave with my 8 month old daughter and it has been great to have my partner at home to hang out with us and share the workload as he is only working 3 days a week now and before he was working the evenings."
"all the jobs that we have been putting off have been done and diy jobs all finished."
"husband and son who normally work away from home are at home with me, so no longer alone during the week."

Slower pace of life, time to pause and take stock

"slowing the world to slow down and restart, making everyone see things from a different perspective. it really highlights what is important in life."
"the general pace of life has slowed down giving more time to consider life structure and once for the future."
"slower pace of life, realising that it should slow down and enjoy it a bit more"
"the pace of life has slowed down which is not a bad thing, i appreciate my loved ones more now too."
"giving everyone an opportunity to reflect on their lives but everyone's lives time to stop and appreciate what actually matters"
"the pace of life has slowed, allowing people a breathing space, a chance to take stock and to value the things that really matter - each other, the environment and the special moments in life."
"enjoy the simple things in life, recognising and then letting go of things that you previously thought were important but have now realised what truly matters in life, detaching yourself from objects and materials and loving and appreciating living things."
"the chance to reflect on the important things in life, slow down and enjoy nature."
"taking time to reflect on what is important in life, realising that i don't need all the things i thought i did to be happy"
"slowing down the pace of life, simplifying things, realising the things i don't need."

Positive longer term global change

"awareness of what is happening all over the world, how the economy will change - for better or worse, will the global pandemic be a sign of the future state of the health of the world?"
"increase in people looking out for each other, positive environmental impact, shows how we can solve big global problems e.g. climate change"
"positive impacts are hard to see but we are allowing the health service to build capacity to deal with covid cases when the lockdown ends."
"for many people this experience has brought an appreciation of those who work in essential services, and this may translate into an ongoing understanding that adequate funding for the future is essential."
"hopefully the rnc and lower paid key workers will be shown more consideration and respect."
"short term positive effect on the environment and short term higher value placed on key workers and rncs."
"a re-evaluation about the importance of the lowest paid workers (and frontline health workers) in our society."
"greener environment and positive effects on climate change which i hope can be continued."
"appreciation of the rnc and a possibility that a Tory government which is traditionally ideologically opposed to the rnc might have a change of heart and think it is worth investing in."
"i'm hopeful that people will realise we are not as secure as they think, and therefore will start to take climate change seriously, hopeful it will be a good chance for meaningful change in this respect, green economy etc."

More time with family

"i have more time to play persona 5 royal and i have been spending more quality time with my immediate family"
"spending more time with family at home, seeing more of my kids, kids are seeing more of their dad than before"
"spending quality time with my wife and young son"
"spending quality time with my daughter and not having to teach stroppy kids"
"being able to spend more time with my husband for my husband to be able to bond with our young baby"
"spending more time with wife, young family and pets"
"having more time with my immediate family, spending time with my children"
"family time - spending more time with husband and then with the baby"
"for those with families and children, they are able to spend more quality time together"
"spending time with my children and not having the guilt of spending time with wider family"

Community spirit

"the community spirit which has emerged, people saying hello to neighbours, people helping the more vulnerable in the community"
"sense of community has increased, seems to genuine concern for others - strangers helping strangers"
"people in general seem to be friendlier and there seems to be a greater sense of community"
"there is a greater sense of community, people are helping each other and generally being friendlier and more tolerant, much better for wildlife"
"the sense of community has been amazing, i have gotten to know neighbours i would only know to say hello, i have helped and been given help"
"the coming together of the local community, villagers have become more friendly and generally more helpful and kind to each other"
"people are pulling together more and are caring for the vulnerable and generally looking out for people more"
"sense of community, stronger connection with the neighbours and the wider community, more kindness and compassion"
"greater feeling of connection with neighbours, greater sense of community"
"community coming together and helping, valuing/seeing creativity of people, shared to entertain others."

Time for new skills and exercise

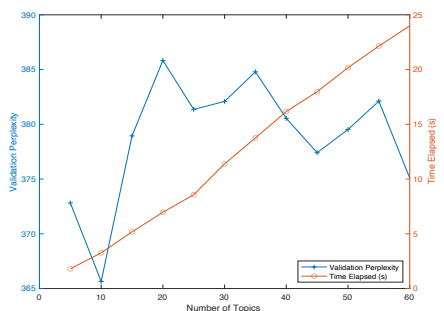
"the free time to do hobbies, and also to read more and also i have time to exercise and learn a new skill like juggling, i am cooking more, and am reading articles i am interested in that can help to complement my upcoming self form courses."
"trying out about yourself, finding time to try new things like yoga, time to learn, time to read"
"the ability to enjoy time on your own and explore hobbies and interests, more time for reflection, more creative time."
"because my gym exams were cancelled, i now have time to do hobbies such as reading and watching g films, i also have time to learn a new instrument and a new language"
"i have been able to do a lot more exercise and have enjoyed playing with my dogs, i have been able to relax a lot more and do things i otherwise wouldn't have time to do"
"i have more time to do things i wouldn't normally do like baking, reading, doing craft projects"
"the ability to spend more time relaxing, taking regular exercise and enjoying preparing and eating healthy meals"
"having more time for things i wouldn't have otherwise tried out e.g. running, reading, playing music"
"can discover new things like interests, more time with family, tests your self-discipline, more time to learn new things"
"i have had the time to learn new skills that i wouldn't have time to learn otherwise"

More regular digital contact

"i've discovered new ways of keeping in touch digitally and have spoken to people i love but don't often see more regularly"
"connecting with friends and family more frequently and esp. those in other countries, using social media such as houseparty and zoom to connect with groups of people."
"for me it has been making more effort to communicate regularly with family and friends - i keep a list of people to ensure that i ring them regularly"
"more regular communication with family, friends and loved ones if not face to face"
"being able to use technology to communicate (eg teams, zoom, google meet etc) and keep in touch with friends overseas"
"being more in touch with friends and family via zoom, including people i didn't used to speak to much before the lockdown"
"i can do my schoolwork easily whilst remaining in touch with friends, i also talk more to people and engage in conversations with family and quizzes via video"
"the fact that most people have complied willingly, i have made more effort to stay in touch with my closest friends and family."
"i have kept active everyday but miss the social contact of family, i also miss the social contact with friends when meeting for group activities and hobbies"
"friends and family are contacting me more regularly by phone than they did before the coronavirus - just for long chats, or to check up on me as an elderly person."

Enjoying the outdoors & wildlife more

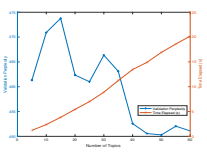
"going out for a walk and not hearing the sirens the fire engines building work especially living in the middle of london you can hear the birds, and actually appreciate that you're walking through the park"
"the warm weather makes it easier to forget what's going on when going for a daily walk"
"going for a daily walk and listening to and watching the birds"
"no pressure to be anywhere/when just to be going for daily walk and enjoying the outdoors"
"lack of pressure to be busy which i see in a lot of people before "how are you?" "so busy" as if it was a badge of honour, we can hear the birds better, lack of structure from external pressures can be a problem, those, like us who are already retired see an advantage in that we have had time to become accustomed to having no external pressures."
"more relaxed at home, lovely walks and exploring our local area"
"for me, it hasn't been a problem as i am not distressed at being alone and quite enjoy the freedom, and longer walks with my dog, thanks to glorious weather."
"walking my dog everyday and seeing people out exercising in small family groups, listening to the birds when out walking and watching them in the garden."
"the quietness and not having to rush around for appointments or to places i am required to do, i have enjoyed doing things from home, the roads, are also more quiet and it is generally more peaceful."
"going on walks and seeing more nature, more birds and wildlife around"



Appendix 4c - Advice topics (zoom to read)

1	1.1	1.1.1	1.1.2	1.1.3	1.1.4	1.1.5	1.1.6	1.1.7	1.1.8	1.1.9	1.1.10	1.1.11	1.1.12	1.1.13	1.1.14	1.1.15	1.1.16	1.1.17	1.1.18	1.1.19	1.1.20	1.1.21	1.1.22	1.1.23	1.1.24	1.1.25	1.1.26	1.1.27	1.1.28	1.1.29	1.1.30	1.1.31	1.1.32	1.1.33	1.1.34	1.1.35	1.1.36	1.1.37	1.1.38	1.1.39	1.1.40	1.1.41	1.1.42	1.1.43	1.1.44	1.1.45	1.1.46	1.1.47	1.1.48	1.1.49	1.1.50	1.1.51	1.1.52	1.1.53	1.1.54	1.1.55	1.1.56	1.1.57	1.1.58	1.1.59	1.1.60	1.1.61	1.1.62	1.1.63	1.1.64	1.1.65	1.1.66	1.1.67	1.1.68	1.1.69	1.1.70	1.1.71	1.1.72	1.1.73	1.1.74	1.1.75	1.1.76	1.1.77	1.1.78	1.1.79	1.1.80	1.1.81	1.1.82	1.1.83	1.1.84	1.1.85	1.1.86	1.1.87	1.1.88	1.1.89	1.1.90	1.1.91	1.1.92	1.1.93	1.1.94	1.1.95	1.1.96	1.1.97	1.1.98	1.1.99	1.1.100
2	2.1	2.1.1	2.1.2	2.1.3	2.1.4	2.1.5	2.1.6	2.1.7	2.1.8	2.1.9	2.1.10	2.1.11	2.1.12	2.1.13	2.1.14	2.1.15	2.1.16	2.1.17	2.1.18	2.1.19	2.1.20	2.1.21	2.1.22	2.1.23	2.1.24	2.1.25	2.1.26	2.1.27	2.1.28	2.1.29	2.1.30	2.1.31	2.1.32	2.1.33	2.1.34	2.1.35	2.1.36	2.1.37	2.1.38	2.1.39	2.1.40	2.1.41	2.1.42	2.1.43	2.1.44	2.1.45	2.1.46	2.1.47	2.1.48	2.1.49	2.1.50	2.1.51	2.1.52	2.1.53	2.1.54	2.1.55	2.1.56	2.1.57	2.1.58	2.1.59	2.1.60	2.1.61	2.1.62	2.1.63	2.1.64	2.1.65	2.1.66	2.1.67	2.1.68	2.1.69	2.1.70	2.1.71	2.1.72	2.1.73	2.1.74	2.1.75	2.1.76	2.1.77	2.1.78	2.1.79	2.1.80	2.1.81	2.1.82	2.1.83	2.1.84	2.1.85	2.1.86	2.1.87	2.1.88	2.1.89	2.1.90	2.1.91	2.1.92	2.1.93	2.1.94	2.1.95	2.1.96	2.1.97	2.1.98	2.1.99	2.1.100
3	3.1	3.1.1	3.1.2	3.1.3	3.1.4	3.1.5	3.1.6	3.1.7	3.1.8	3.1.9	3.1.10	3.1.11	3.1.12	3.1.13	3.1.14	3.1.15	3.1.16	3.1.17	3.1.18	3.1.19	3.1.20	3.1.21	3.1.22	3.1.23	3.1.24	3.1.25	3.1.26	3.1.27	3.1.28	3.1.29	3.1.30	3.1.31	3.1.32	3.1.33	3.1.34	3.1.35	3.1.36	3.1.37	3.1.38	3.1.39	3.1.40	3.1.41	3.1.42	3.1.43	3.1.44	3.1.45	3.1.46	3.1.47	3.1.48	3.1.49	3.1.50	3.1.51	3.1.52	3.1.53	3.1.54	3.1.55	3.1.56	3.1.57	3.1.58	3.1.59	3.1.60	3.1.61	3.1.62	3.1.63	3.1.64	3.1.65	3.1.66	3.1.67	3.1.68	3.1.69	3.1.70	3.1.71	3.1.72	3.1.73	3.1.74	3.1.75	3.1.76	3.1.77	3.1.78	3.1.79	3.1.80	3.1.81	3.1.82	3.1.83	3.1.84	3.1.85	3.1.86	3.1.87	3.1.88	3.1.89	3.1.90	3.1.91	3.1.92	3.1.93	3.1.94	3.1.95	3.1.96	3.1.97	3.1.98	3.1.99	3.1.100
4	4.1	4.1.1	4.1.2	4.1.3	4.1.4	4.1.5	4.1.6	4.1.7	4.1.8	4.1.9	4.1.10	4.1.11	4.1.12	4.1.13	4.1.14	4.1.15	4.1.16	4.1.17	4.1.18	4.1.19	4.1.20	4.1.21	4.1.22	4.1.23	4.1.24	4.1.25	4.1.26	4.1.27	4.1.28	4.1.29	4.1.30	4.1.31	4.1.32	4.1.33	4.1.34	4.1.35	4.1.36	4.1.37	4.1.38	4.1.39	4.1.40	4.1.41	4.1.42	4.1.43	4.1.44	4.1.45	4.1.46	4.1.47	4.1.48	4.1.49	4.1.50	4.1.51	4.1.52	4.1.53	4.1.54	4.1.55	4.1.56	4.1.57	4.1.58	4.1.59	4.1.60	4.1.61	4.1.62	4.1.63	4.1.64	4.1.65	4.1.66	4.1.67	4.1.68	4.1.69	4.1.70	4.1.71	4.1.72	4.1.73	4.1.74	4.1.75	4.1.76	4.1.77	4.1.78	4.1.79	4.1.80	4.1.81	4.1.82	4.1.83	4.1.84	4.1.85	4.1.86	4.1.87	4.1.88	4.1.89	4.1.90	4.1.91	4.1.92	4.1.93	4.1.94	4.1.95	4.1.96	4.1.97	4.1.98	4.1.99	4.1.100
5	5.1	5.1.1	5.1.2	5.1.3	5.1.4	5.1.5	5.1.6	5.1.7	5.1.8	5.1.9	5.1.10	5.1.11	5.1.12	5.1.13	5.1.14	5.1.15	5.1.16	5.1.17	5.1.18	5.1.19	5.1.20	5.1.21	5.1.22	5.1.23	5.1.24	5.1.25	5.1.26	5.1.27	5.1.28	5.1.29	5.1.30	5.1.31	5.1.32	5.1.33	5.1.34	5.1.35	5.1.36	5.1.37	5.1.38	5.1.39	5.1.40	5.1.41	5.1.42	5.1.43	5.1.44	5.1.45	5.1.46	5.1.47	5.1.48	5.1.49	5.1.50	5.1.51	5.1.52	5.1.53	5.1.54	5.1.55	5.1.56	5.1.57	5.1.58	5.1.59	5.1.60	5.1.61	5.1.62	5.1.63	5.1.64	5.1.65	5.1.66	5.1.67	5.1.68	5.1.69	5.1.70	5.1.71	5.1.72	5.1.73	5.1.74	5.1.75	5.1.76	5.1.77	5.1.78	5.1.79	5.1.80	5.1.81	5.1.82	5.1.83	5.1.84	5.1.85	5.1.86	5.1.87	5.1.88	5.1.89	5.1.90	5.1.91	5.1.92	5.1.93	5.1.94	5.1.95	5.1.96	5.1.97	5.1.98	5.1.99	5.1.100
6	6.1	6.1.1	6.1.2	6.1.3	6.1.4	6.1.5	6.1.6	6.1.7	6.1.8	6.1.9	6.1.10	6.1.11	6.1.12	6.1.13	6.1.14	6.1.15	6.1.16	6.1.17	6.1.18	6.1.19	6.1.20	6.1.21	6.1.22	6.1.23	6.1.24	6.1.25	6.1.26	6.1.27	6.1.28	6.1.29	6.1.30	6.1.31	6.1.32	6.1.33	6.1.34	6.1.35	6.1.36	6.1.37	6.1.38	6.1.39	6.1.40	6.1.41	6.1.42	6.1.43	6.1.44	6.1.45	6.1.46	6.1.47	6.1.48	6.1.49	6.1.50	6.1.51	6.1.52	6.1.53	6.1.54	6.1.55	6.1.56	6.1.57	6.1.58	6.1.59	6.1.60	6.1.61	6.1.62	6.1.63	6.1.64	6.1.65	6.1.66	6.1.67	6.1.68	6.1.69	6.1.70	6.1.71	6.1.72	6.1.73	6.1.74	6.1.75	6.1.76	6.1.77	6.1.78	6.1.79	6.1.80	6.1.81	6.1.82	6.1.83	6.1.84	6.1.85	6.1.86	6.1.87	6.1.88	6.1.89	6.1.90	6.1.91	6.1.92	6.1.93	6.1.94	6.1.95	6.1.96	6.1.97	6.1.98	6.1.99	6.1.100
7	7.1	7.1.1	7.1.2	7.1.3	7.1.4	7.1.5	7.1.6	7.1.7	7.1.8	7.1.9	7.1.10	7.1.11	7.1.12	7.1.13	7.1.14	7.1.15	7.1.16	7.1.17	7.1.18	7.1.19	7.1.20	7.1.21	7.1.22	7.1.23	7.1.24	7.1.25	7.1.26	7.1.27	7.1.28	7.1.29	7.1.30	7.1.31	7.1.32	7.1.33	7.1.34	7.1.35	7.1.36	7.1.37	7.1.38	7.1.39	7.1.40	7.1.41	7.1.42	7.1.43	7.1.44	7.1.45	7.1.46	7.1.47	7.1.48	7.1.49	7.1.50	7.1.51	7.1.52	7.1.53	7.1.54	7.1.55	7.1.56	7.1.57	7.1.58	7.1.59	7.1.60	7.1.61	7.1.62	7.1.63	7.1.64	7.1.65	7.1.66	7.1.67	7.1.68	7.1.69	7.1.70	7.1.71	7.1.72	7.1.73	7.1.74	7.1.75	7.1.76	7.1.77	7.1.78	7.1.79	7.1.80	7.1.81	7.1.82	7.1.83	7.1.84	7.1.85	7.1.86	7.1.87	7.1.88	7.1.89	7.1.90	7.1.91	7.1.92	7.1.93	7.1.94	7.1.95	7.1.96	7.1.97	7.1.98	7.1.99	7.1.100
8	8.1	8.1.1	8.1.2	8.1.3	8.1.4	8.1.5	8.1.6	8.1.7	8.1.8	8.1.9	8.1.10	8.1.11	8.1.12	8.1.13	8.1.14	8.1.15	8.1.16	8.1.17	8.1.18	8.1.19	8.1.20	8.1.21	8.1.22	8.1.23	8.1.24	8.1.25	8.1.26	8.1.27	8.1.28	8.1.29	8.1.30	8.1.31	8.1.32	8.1.33	8.1.34	8.1.35	8.1.36	8.1.37	8.1.38	8.1.39	8.1.40	8.1.41	8.1.42	8.1.43	8.1.44	8.1.45	8.1.46	8.1.47	8.1.48	8.1.49	8.1.50	8.1.51	8.1.52	8.1.53	8.1.54	8.1.55	8.1.56	8.1.57	8.1.58	8.1.59	8.1.60	8.1.61	8.1.62	8.1.63	8.1.64	8.1.65	8.1.66	8.1.67	8.1.68	8.1.69	8.1.70	8.1.71	8.1.72	8.1.73	8.1.74	8.1.75	8.1.76	8.1.77	8.1.78	8.1.79	8.1.80	8.1.81	8.1.82	8.1.83	8.1.84	8.1.85	8.1.86	8.1.87	8.1.88	8.1.89	8.1.90	8.1.91	8.1.92	8.1.93	8.1.94	8.1.95	8.1.96	8.1.97	8.1.98	8.1.99	8.1.100
9	9.1	9.1.1	9.1.2	9.1.3	9.1.4	9.1.5	9.1.6	9.1.7	9.1.8	9.1.9	9.1.10	9.1.11	9.1.12	9.1.13	9.1.14	9.1.15	9.1.16	9.1.17	9.1.18	9.1.19	9.1.20	9.1.21	9.1.22	9.1.23	9.1.24	9.1.25	9.1.26	9.1.27	9.1.28	9.1.29	9.1.30	9.1.31	9.1.32	9.1.33	9.1.34	9.1.35	9.1.36	9.1.37	9.1.38	9.1.39	9.1.40	9.1.41	9.1.42	9.1.43	9.1.44	9.1.45	9.1.46	9.1.47	9.1.48	9.1.49	9.1.50	9.1.51	9.1.52	9.1.53	9.1.54	9.1.55	9.1.56	9.1.57	9.1.58	9.1.59	9.1.60	9.1.61	9.1.62	9.1.63	9.1.64	9.1.65	9.1.66	9.1.67	9.1.68	9.1.69	9.1.70	9.1.71	9.1.72	9.1.73	9.1.74	9.1.75	9.1.76	9.1.77	9.1.78	9.1.79	9.1.80	9.1.81	9.1.82	9.1.83	9.1.84	9.1.85	9.1.86	9.1.87	9.1.88	9.1.89	9.1.90	9.1.91	9.1.92	9.1.93	9.1.94	9.1.95	9.1.96	9.1.97	9.1.98	9.1.99	9.1.100
10	10.1	10.1.1	10.1.2	10.1.3	10.1.4	10.1.5	10.1.6	10.1.7	10.1.8	10.1.9	10.1.10	10.1.11	10.1.12	10.1.13	10.1.14	10.1.15	10.1.16	10.1.17	10.1.18	10.1.19	10.1.20	10.1.21	10.1.22	10.1.23	10.1.24	10.1.25	10.1.26	10.1.27	10.1.28	10.1.29	10.1.30	10.1.31	10.1.32	10.1.33	10.1.34	10.1.35	10.1.36	10.1.37	10.1.38	10.1.39	10.1.40	10.1.41	10.1.42	10.1.43	10.1.44	10.1.45	10.1.46	10.1.47	10.1.48	10.1.49	10.1.50	10.1.51	10.1.52	10.1.53	10.1.54	10.1.55	10.1.56	10.1.57	10.1.58	10.1.59	10.1.60	10.1.61	10.1.62	10.1.63	10.1.64	10.1.65	10.1.66	10.1.67	10.1.68	10.1.69	10.1.70	10.1.71	10.1.72	10.1.73	10.1.74	10.1.75	10.1.76	10.1.77	10.1.78	10.1.79	10.1.80	10.1.81	10.1.82	10.1.83	10.1.84	10.1.85	10.1.86	10.1.87	10.1.88	10.1.89	10.1.90	10.1.91	10.1.92	10.1.93	10.1.94	10.1.95	10.1.96	10.1.97	10.1.98	10.1.99	10.1.100
11	11.1	11.1.1	11.1.2	11.1.3	11.1.4	11.1.5	11.1.6	11.1.7	11.1.8	11.1.9	11.1.10	11.1.11	11.1.12	11.1.13	11.1.14	11.1.15	11.1.16	11.1.17	11.1.18	11.1.19	11.1.20	11.1.21	11.1.22	11.1.23	11.1.24	11.1.25	11.1.26	11.1.27	11.1.28	11.1.29	11.1.30	11.1.31	11.1.32	11.1.33	11.1.34	11.1.35	11.1.36	11.1.37	11.1.38	11.1.39	11.1.40	11.1.41	11.1.42	11.1.43	11.1.44	11.1.45	11.1.46	11.1.47	11.1.48	11.1.49	11.1.50	11.1.51	11.1.52	11.1.53	11.1.54	11.1.55	11.1.56	11.1.57	11.1.58	11.1.59	11.1.60	11.1.61	11.1.62	11.1.63	11.1.64	11.1.65	11.1.66	11.1.67	11.1.68	11.1.69	11.1.70	11.1.71	11.1.72	11.1.73	11.1																										

1
2
3
4
5
6
7
8
9
10
11
12
13
14
15
16
17
18
19
20
21
22
23
24
25
26
27
28
29
30
31
32
33
34
35
36
37
38
39
40
41
42
43
44
45
46
47
48
49
50
51
52
53
54
55
56
57
58
59
60
61
62
63
64
65
66
67
68
69
70
71
72
73
74
75
76
77
78
79
80
81
82
83
84
85
86
87
88
89
90
91
92
93
94
95
96
97
98
99
100
101
102
103
104
105
106
107
108
109
110
111
112
113
114
115
116
117
118
119
120
121
122
123
124
125
126
127
128
129
130
131
132
133
134
135
136
137
138
139
140
141
142
143
144
145
146
147
148
149
150
151
152
153
154
155
156
157
158
159
160
161
162
163
164
165
166
167
168
169
170
171
172
173
174
175
176
177
178
179
180
181
182
183
184
185
186
187
188
189
190
191
192
193
194
195
196
197
198
199
200
201
202
203
204
205
206
207
208
209
210
211
212
213
214
215
216
217
218
219
220
221
222
223
224
225
226
227
228
229
230
231
232
233
234
235
236
237
238
239
240
241
242
243
244
245
246
247
248
249
250
251
252
253
254
255
256
257
258
259
260
261
262
263
264
265
266
267
268
269
270
271
272
273
274
275
276
277
278
279
280
281
282
283
284
285
286
287
288
289
290
291
292
293
294
295
296
297
298
299
300
301
302
303
304
305
306
307
308
309
310
311
312
313
314
315
316
317
318
319
320
321
322
323
324
325
326
327
328
329
330
331
332
333
334
335
336
337
338
339
340
341
342
343
344
345
346
347
348
349
350
351
352
353
354
355
356
357
358
359
360
361
362
363
364
365
366
367
368
369
370
371
372
373
374
375
376
377
378
379
380
381
382
383
384
385
386
387
388
389
390
391
392
393
394
395
396
397
398
399
400
401
402
403
404
405
406
407
408
409
410
411
412
413
414
415
416
417
418
419
420
421
422
423
424
425
426
427
428
429
430
431
432
433
434
435
436
437
438
439
440
441
442
443
444
445
446
447
448
449
450
451
452
453
454
455
456
457
458
459
460
461
462
463
464
465
466
467
468
469
470
471
472
473
474
475
476
477
478
479
480
481
482
483
484
485
486
487
488
489
490
491
492
493
494
495
496
497
498
499
500
501
502
503
504
505
506
507
508
509
510
511
512
513
514
515
516
517
518
519
520
521
522
523
524
525
526
527
528
529
530
531
532
533
534
535
536
537
538
539
540
541
542
543
544
545
546
547
548
549
550
551
552
553
554
555
556
557
558
559
560
561
562
563
564
565
566
567
568
569
570
571
572
573
574
575
576
577
578
579
580
581
582
583
584
585
586
587
588
589
590
591
592
593
594
595
596
597
598
599
600
601
602
603
604
605
606
607
608
609
610
611
612
613
614
615
616
617
618
619
620
621
622
623
624
625
626
627
628
629
630
631
632
633
634
635
636
637
638
639
640
641
642
643
644
645
646
647
648
649
650
651
652
653
654
655
656
657
658
659
660
661
662
663
664
665
666
667
668
669
670
671
672
673
674
675
676
677
678
679
680
681
682
683
684
685
686
687
688
689
690
691
692
693
694
695
696
697
698
699
700
701
702
703
704
705
706
707
708
709
710
711
712
713
714
715
716
717
718
719
720
721
722
723
724
725
726
727
728
729
730
731
732
733
734
735
736
737
738
739
740
741
742
743
744
745
746
747
748
749
750
751
752
753
754
755
756
757
758
759
760
761
762
763
764
765
766
767
768
769
770
771
772
773
774
775
776
777
778
779
780
781
782
783
784
785
786
787
788
789
790
791
792
793
794
795
796
797
798
799
800
801
802
803
804
805
806
807
808
809
810
811
812
813
814
815
816
817
818
819
820
821
822
823
824
825
826
827
828
829
830
831
832
833
834
835
836
837
838
839
840
841
842
843
844
845
846
847
848
849
850
851
852
853
854
855
856
857
858
859
860
861
862
863
864
865
866
867
868
869
870
871
872
873
874
875
876
877
878
879
880
881
882
883
884
885
886
887
888
889
890
891
892
893
894
895
896
897
898
899
900
901
902
903
904
905
906
907
908
909
910
911
912
913
914
915
916
917
918
919
920
921
922
923
924
925
926
927
928
929
930
931
932
933
934
935
936
937
938
939
940
941
942
943
944
945
946
947
948
949
950
951
952
953
954
955
956
957
958
959
960
961
962
963
964
965
966
967
968
969
970
971
972
973
974
975
976
977
978
979
980
981
982
983
984
985
986
987
988
989
990
991
992
993
994
995
996
997
998
999
1000



Appendix 4d - Advice topic prevalences vs risk factors (zoom to read)

Example group comparisons	Caring for older adult		Disabled/limited		Health worker		Retired		Anxiety		Depression		Income negatively affected		Cohabites (I)			Cohabites (II)		
	t	p	t	p	t	p	t	p	t	p	t	p	t	p	school children	home schooled children	pre-school children	school children	home schooled children	pre-school children
Establish a healthy routine	0.138	0.590	4.481	0.000	1.784	0.074	-0.311	0.000	-3.854	0.000	-1.795	0.000	-2.306	0.021	1.833	1.219	0.254	0.000	0.223	0.799
Connect with others using video calls, including in novel ways (e.g., "virtual TV nights")	-0.082	0.930	1.294	0.198	1.837	0.067	4.987	0.000	4.467	0.000	-1.857	0.063	-3.717	0.000	2.056	-0.115	1.813	0.000	0.065	0.264
Do meditation, yoga, or other mindful activities	1.113	0.266	2.029	0.042	2.998	0.003	-0.861	0.000	4.647	0.000	-0.217	0.787	-1.071	0.284	2.105	-1.109	0.269	0.000	0.151	0.385
Try to do a little exercise, even if you don't feel motivated	1.517	0.120	1.018	0.308	1.493	0.141	-0.507	0.000	3.669	0.001	1.488	0.140	-0.402	0.689	0.401	-1.170	0.241	0.000	0.000	0.000
Go outside	0.412	0.681	2.513	0.011	0.588	0.536	-0.617	0.537	1.222	0.222	-1.877	0.063	1.908	0.056	3.882	1.232	-1.079	0.000	0.238	0.281
Keep busy	0.392	0.693	-0.820	0.417	-0.820	0.417	-0.503	0.000	-0.469	0.643	0.000	0.000	0.000	0.000	0.000	-1.022	-0.001	0.000	0.000	0.000
Use healthy distraction techniques when stressed	-0.079	0.937	1.305	0.192	-1.219	0.226	1.114	0.261	1.683	0.092	-1.213	0.230	-1.045	0.302	1.189	0.270	1.164	0.000	0.113	0.298
Try hard to have a healthy diet and minimize alcohol use	1.841	0.066	1.820	0.069	-0.179	0.858	-0.009	0.921	-0.009	0.921	-0.124	0.902	1.244	0.219	2.138	-1.176	1.051	0.000	0.229	0.208
Structure your day	0.895	0.371	2.261	0.024	-1.421	0.155	1.122	0.264	3.028	0.002	-4.309	0.000	-0.428	0.669	2.500	-0.000	1.987	0.000	0.390	0.049
Go more positive	-0.005	0.985	-0.408	0.681	-0.864	0.377	10.770	0.000	-1.111	0.267	0.000	0.000	-0.466	0.639	1.511	-2.446	-2.056	0.000	0.376	0.000
Enjoy the peace and quiet	-1.092	0.275	0.230	0.819	0.229	0.819	0.795	0.426	0.429	0.668	0.415	0.138	1.209	0.227	4.778	1.186	2.888	0.000	0.113	0.000
Go to the park	-1.474	0.046	-0.407	0.681	-0.407	0.681	-1.135	0.256	1.888	0.059	-1.854	0.059	-1.106	0.269	1.511	-2.446	-2.056	0.000	0.376	0.000
Take up a new hobby	-1.038	0.109	-0.943	0.346	0.117	0.891	1.339	0.181	1.713	0.086	1.303	0.239	1.133	0.257	0.596	0.316	0.648	0.000	0.113	0.000
Set up regular contact times for friends and family, whether over the telephone or using video calls	1.295	0.106	1.778	0.075	1.686	0.096	-0.476	0.633	0.886	0.376	2.382	0.010	-1.077	0.286	3.821	1.897	1.118	0.000	0.000	0.000
Keep in touch with family and friends	-1.038	0.109	-0.943	0.346	0.117	0.891	1.339	0.181	1.713	0.086	1.303	0.239	1.133	0.257	0.596	0.316	0.648	0.000	0.113	0.000
Take the opportunity to show others a bit	-1.038	0.109	-0.943	0.346	0.117	0.891	1.339	0.181	1.713	0.086	1.303	0.239	1.133	0.257	0.596	0.316	0.648	0.000	0.113	0.000
Spent more time with family	-1.037	0.110	-0.954	0.339	-0.172	0.710	-0.795	0.424	-0.699	0.486	-0.802	0.416	1.642	-0.331	1.044	-1.031	-1.004	0.000	0.000	0.000
Focus on getting through the current day; try not to worry so much about the future	-1.471	0.141	1.267	0.205	-0.126	0.718	1.186	0.100	-0.221	0.825	-1.017	0.312	0.817	0.414	-0.596	-0.602	-1.037	0.000	0.000	0.000
Help older adults / shielded people	-0.385	0.558	1.821	0.069	-0.529	0.611	3.105	0.001	1.272	0.203	2.105	0.020	-1.374	0.169	4.085	-2.009	2.200	0.000	0.788	0.027
Maintain a work routine	0.682	0.490	2.247	0.029	2.148	0.031	6.003	0.000	1.221	0.220	1.817	0.072	0.822	0.414	1.817	-0.801	1.040	0.000	0.548	0.001
Take up or revisit hobbies that you don't normally have time to do	0.196	0.561	2.024	0.043	-0.985	0.324	-0.814	0.416	1.864	0.067	3.103	0.000	2.646	-1.204	2.646	-1.204	2.467	0.000	0.071	0.001
Do something creative	1.211	0.111	1.248	0.215	0.184	0.851	1.227	0.224	1.122	0.262	0.000	0.000	1.382	0.168	1.382	0.168	1.381	0.000	0.000	0.000
Be kind to yourself and others	-1.211	0.111	-1.248	0.215	-0.184	0.851	-1.227	0.224	-1.122	0.262	0.000	0.000	-1.382	0.168	-1.382	0.168	-1.381	0.000	0.000	0.000
Try to focus on the positives	-1.211	0.111	-1.248	0.215	-0.184	0.851	-1.227	0.224	-1.122	0.262	0.000	0.000	-1.382	0.168	-1.382	0.168	-1.381	0.000	0.000	0.000
Minimize time reading or listening to the news	-1.024	0.217	1.181	0.238	0.339	0.510	0.603	0.545	1.055	0.295	-1.054	0.287	-1.865	0.062	7.881	3.884	3.845	0.000	0.000	0.000
Reflect and take stock	-0.702	0.483	1.211	0.226	1.308	0.191	1.649	0.064	1.603	0.109	-1.477	0.140	1.945	0.033	2.100	-2.010	1.118	0.000	0.423	0.315
Informative to help others	-0.618	0.540	1.401	0.160	0.280	0.584	0.603	0.545	1.309	0.181	2.204	0.017	1.817	0.181	4.214	-0.848	1.241	0.000	0.621	0.000
Take pleasure from the simple things	0.448	0.654	1.303	0.270	2.818	0.005	-1.960	0.020	1.831	0.087	3.804	0.000	-0.729	0.466	4.708	1.205	1.181	0.000	0.223	0.111
Be more communicative with people around you, when out and about	-0.759	0.448	1.041	0.308	0.888	0.370	4.960	0.000	2.756	0.004	3.811	0.000	-1.866	0.059	6.145	1.822	1.051	0.000	0.007	0.288
Read books	0.211	0.835	1.198	0.231	0.882	0.389	-1.000	0.317	0.113	0.755	0.438	0.117	1.599	0.110	3.649	-0.601	1.617	0.000	0.548	0.302
Engage in social activities and clubs	0.977	0.360	2.179	0.029	0.181	0.868	6.461	0.000	0.648	0.513	-0.071	0.888	-1.143	0.249	1.857	-1.977	0.618	0.000	0.000	0.000
Work out what makes you happy and make sure you do it	1.719	0.086	-0.046	0.962	1.508	0.132	-2.820	0.005	1.559	0.053	1.078	0.281	1.287	0.205	2.850	-0.717	1.818	0.000	0.471	0.066
Significant work time with your work time	-1.090	0.272	1.085	0.282	1.210	0.268	-11.207	0.000	-1.281	0.000	-1.281	0.000	-1.539	0.011	0.015	-1.900	1.160	0.000	0.114	0.000
Maintain your mental and physical health	-0.230	0.826	1.878	0.026	1.090	0.276	1.118	0.261	3.812	0.000	4.474	0.000	-1.136	0.257	2.805	-1.148	3.810	0.000	0.882	0.000
Keep up with news and what's going on in the world	1.147	0.111	1.018	0.310	0.847	0.394	-0.207	0.826	0.207	0.826	-0.057	0.164	1.715	0.066	0.015	-1.763	1.900	0.000	0.000	0.000
Listen to music, podcasts or enjoy the wildlife	0.418	0.584	0.219	0.819	0.674	0.500	4.420	0.000	1.668	0.000	2.788	0.005	0.919	0.350	0.462	-1.411	1.118	0.000	0.000	0.000
Attend the things you cannot change and change the things you can	-0.140	0.720	0.077	0.944	0.104	0.857	1.454	0.146	1.069	0.279	-0.179	0.668	-0.105	0.810	1.074	-1.010	0.511	0.000	0.000	0.000
Maintain personal hygiene and wash hands regularly	1.117	0.235	1.911	0.055	-0.111	0.935	-0.012	0.980	0.767	0.443	-1.198	0.232	1.946	0.052	2.375	-1.033	0.511	0.000	0.316	0.056
Follow lockdown rules and wear and new approaches to reduce stress in the household	1.617	0.105	1.524	0.020	0.171	0.710	4.670	0.000	1.021	0.313	-0.179	0.646	1.810	0.020	7.254	2.830	4.173	0.000	0.000	0.000
Complete tasks you are putting off	0.708	0.479	0.792	0.428	1.169	0.242	-1.143	0.262	1.394	0.163	-0.326	0.745	2.181	0.033	3.886	-0.388	0.215	0.000	0.348	0.823
Stay safe and think about your own health and also that of others	-1.610	0.107	0.214	0.861	-0.213	0.836	-10.211	0.000	-0.121	0.900	-0.413	0.516	0.537	0.603	1.857	-1.018	1.160	0.000	0.000	0.000
Do the jobs you have been putting off	0.144	0.887	0.672	0.501	1.025	0.301	-0.000	0.000	1.368	0.002	-1.292	0.166	2.768	0.020	4.183	-0.021	0.660	0.000	0.999	0.646
Learn a new skill or language	0.995	0.320	1.115	0.265	-2.759	0.001	-2.088	0.007	1.022	0.302	-2.088	0.029	-0.409	0.649	1.285	-1.821	1.190	0.000	0.000	0.214
Get some fresh air	0.730	0.478	0.944	0.344	0.944	0.344	0.134	0.744	0.164	0.744	0.164	1.814	0.002	14.812	5.418	5.888	0.000	0.000	0.000	
Break the routine by something different or creative	-0.207	0.770	1.497	0.134	1.424	0.158	6.423	0.000	1.371	0.030	2.441	0.015	-1.384	0.047	4.761	-0.714	2.645	0.000	0.471	0.008
Grow your own	0.307	0.709	1.075	0.282	1.419	0.151	11.161	0.000	0.905	0.388	-1.817	0.101	-1.718	0.066	4.849	0.111	1.041	0.000	0.794	0.288
Play board and card games more	1.217	0.226	0.626	0.532	0.768	0.443	0.423	0.600	0.648	0.517	2.943	0.011	1.279	0.201	4.215	-0.213	1.722	0.000	0.836	0.085

Appendix 4e - CCA of all topics vs mood self assessment (zoom to read)

Topic	M1	M2	M3	M4	M5	M6	M7	M8	M9	M10	M11	M12
Establish a healthy routine	0.07	0.27	0.17	0.26	0.09	0.19	0.19	0.29	0.09	0.10	0.08	0.13
Connect with others using video calls, including to novel ways (e.g. "Virtual TV night")	0.05	-0.02	-0.08	0.29	0.07	0.05	0.07	0.11	0.16	0.08	0.03	0.13
Do meditation, yoga, or other mental activities	-0.11	0.21	0.05	0.11	0.03	0.04	0.10	0.13	0.15	0.06	0.07	0.10
Try to do a little exercise, even if you don't feel motivated	-0.11	0.21	0.05	0.11	0.03	0.04	0.10	0.13	0.15	0.06	0.07	0.10
Use healthy distraction techniques when stressed	0.05	-0.06	-0.11	0.14	0.17	0.07	0.10	0.11	0.15	0.07	0.06	0.11
Try hard to have a healthy diet and moderate alcohol use	-0.07	-0.06	-0.14	0.18	0.13	0.23	0.02	0.03	0.07	0.11	0.07	0.05
Structure your day	0.09	-0.11	-0.08	0.18	0.10	0.06	0.14	0.06	0.14	0.08	0.11	0.20
Go to your regular sleep schedule	0.09	-0.11	-0.08	0.18	0.10	0.06	0.14	0.06	0.14	0.08	0.11	0.20
Take up a new hobby	0.09	-0.11	-0.08	0.18	0.10	0.06	0.14	0.06	0.14	0.08	0.11	0.20
Set up regular contact times for friends and family, whether over the telephone or using video calls	-0.06	0.05	-0.11	0.11	0.15	0.11	0.15	0.07	0.08	0.04	0.06	0.15
Keep in touch with friends and family	0.05	-0.12	-0.23	0.09	0.09	0.07	0.07	0.12	0.05	0.03	0.04	0.09
Take the opportunity to slow down a bit	0.01	0.12	0.09	0.07	0.01	0.09	0.05	0.06	0.06	0.05	0.03	0.03
Focus on getting through the current day; try not to worry too much about the future	0.01	0.06	0.04	0.01	0.06	0.07	0.06	0.10	0.10	0.11	0.11	0.15
Have video chats / virtual hangouts	0.05	-0.07	-0.09	0.05	0.09	0.11	0.09	0.07	0.07	0.07	0.07	0.13
Maintain a work routine	-0.01	-0.03	0.03	0.13	0.03	0.16	0.05	-0.11	0.04	0.13	0.19	0.28
Take up or rekindle hobbies that you don't normally have time to do	-0.05	-0.08	0.08	0.10	0.18	0.10	0.10	0.11	0.14	0.05	0.04	0.06
Do something creative	-0.04	-0.11	0.12	0.06	0.20	0.11	0.05	0.07	0.03	0.11	0.13	0.17
Go to bed on time and wake up on time	0.01	0.12	0.12	0.04	0.04	0.00	0.06	0.07	0.08	0.08	0.06	0.26
Try to focus on the positives	0.09	-0.03	0.08	0.05	0.08	0.13	0.20	0.16	0.12	0.19	0.24	0.22
Minimum time meditating or listening to music	-0.07	0.06	0.12	0.15	0.06	0.08	0.02	0.01	0.14	0.05	0.11	0.12
Reflect and take stock	0.10	0.18	0.23	0.01	0.05	0.01	0.13	0.03	0.11	0.04	0.22	0.16
Volunteer to help others	0.01	0.10	0.09	0.00	0.11	0.18	0.03	0.14	0.27	0.05	0.21	0.21
Take pleasure from the simple things	0.00	0.12	0.02	0.08	0.05	0.13	0.15	0.13	0.27	0.12	0.21	0.21
Engage in online courses and clubs	-0.06	0.18	0.05	0.06	0.07	0.17	0.05	0.16	0.14	0.05	0.26	0.24
Engage in online courses and clubs	-0.06	0.18	0.05	0.06	0.07	0.17	0.05	0.16	0.14	0.05	0.26	0.24
Read books	-0.04	-0.04	0.03	0.08	0.03	0.29	0.03	0.05	0.18	0.14	0.26	0.26
Engage in online courses and clubs	-0.06	0.18	0.05	0.06	0.07	0.17	0.05	0.16	0.14	0.05	0.26	0.24
Work out what makes you happy and make sure you do it	-0.03	-0.03	0.03	0.07	0.10	0.15	0.08	0.05	0.28	0.14	0.31	0.31
Schedule work time from work time	0.10	0.02	0.25	0.05	0.11	0.28	0.19	0.20	0.22	0.15	0.45	0.43
Listen to music, read or just the wildlife	-0.09	0.13	0.11	0.06	0.07	0.05	0.04	0.08	0.25	0.12	0.42	0.41
Maintain the work routine	-0.11	-0.09	0.12	0.04	0.02	0.10	0.06	0.07	0.30	0.14	0.41	0.44
Maintain your mental and physical health	-0.08	-0.01	0.03	0.06	0.15	0.06	0.02	0.05	0.15	0.11	0.35	0.30
Set targets to achieve each day	-0.07	0.09	0.00	0.08	0.05	0.16	0.13	0.09	0.05	0.12	0.32	0.32
Set targets to achieve each day	-0.07	0.09	0.00	0.08	0.05	0.16	0.13	0.09	0.05	0.12	0.32	0.32
Follow lockdown rules and work out new approaches to reduce stress in the household	0.01	0.02	0.01	0.05	0.08	0.08	0.16	0.10	0.11	0.07	0.32	0.32
Maintain personal hygiene and wash hands regularly	0.01	0.03	0.01	0.02	0.12	0.18	0.14	0.09	0.09	0.06	0.36	0.36
Find something productive to do each day	0.04	0.04	0.11	0.01	0.02	0.12	0.18	0.10	0.11	0.07	0.36	0.36
Stay safe and think about your own health and that of others	0.01	0.05	-0.03	-0.08	0.08	0.04	0.04	0.17	0.02	0.12	0.34	0.34
Complete little jobs around the house	0.18	0.06	0.19	0.03	0.03	0.07	0.08	0.06	0.11	0.11	0.34	0.34
Do the jobs you have been putting off	0.01	0.05	0.03	0.07	0.07	0.07	0.11	0.04	0.05	0.08	0.34	0.34
Learn a new skill or language	0.02	-0.01	0.01	0.19	0.10	0.07	0.03	0.11	0.11	0.07	0.37	0.33
Get some fresh air	0.01	-0.05	0.15	0.08	0.05	0.07	0.11	0.09	0.04	0.11	0.37	0.35
Break the mould: do something different or creative	-0.02	0.10	0.14	0.04	0.06	0.06	0.01	0.01	0.11	0.07	0.39	0.35
Give your pet	0.01	-0.09	0.25	0.19	0.07	0.08	0.04	0.00	0.08	0.04	0.38	0.34
Play board and card games more	-0.06	-0.09	0.11	0.03	0.05	0.21	0.19	0.01	0.28	0.03	0.34	0.39
Read the news and do social media	-0.01	-0.14	0.05	0.07	0.16	0.14	0.00	0.00	0.00	0.00	0.37	0.35
More free time, including for recreation	-0.11	-0.10	0.00	0.04	0.09	0.05	0.11	0.11	0.11	0.11	0.41	0.41
Better mental environment	0.04	0.20	0.09	0.09	0.06	0.16	0.02	0.01	0.10	0.10	0.41	0.41
More time to focus on other important things	0.01	0.10	0.09	0.05	0.22	0.00	0.10	0.10	0.10	0.10	0.35	0.42
Spouse pays off the bills to please and take stock	-0.04	-0.06	0.16	0.02	0.02	0.02	0.00	0.00	0.00	0.00	0.34	0.42
Positive longer term global changes	0.01	0.20	0.09	0.03	0.04	0.12	0.12	0.22	0.04	0.04	0.39	0.42
More time with family	-0.11	0.08	0.20	0.07	0.05	0.12	0.10	0.11	0.04	0.04	0.39	0.42
Community spirit	0.19	0.20	0.08	0.15	0.08	0.29	0.07	0.04	0.11	0.04	0.41	0.47
Time for new skills and exercises	-0.01	-0.20	0.26	0.26	0.06	0.04	0.04	0.04	0.04	0.04	0.37	0.45
More regular digital contact	-0.01	0.11	0.19	0.16	0.22	0.02	0.12	0.13	0.05	0.11	0.41	0.45
Enjoying the outdoors & wildlife more	0.05	-0.05	0.10	0.10	0.00	0.07	0.26	0.13	0.03	0.03	0.41	0.45
Not being able to see relatives	0.00	0.14	0.29	0.08	0.00	0.00	0.11	0.18	0.20	0.24	0.41	0.47
Problems with working and studying from home	0.09	0.24	0.05	0.12	0.06	0.10	0.10	0.10	0.10	0.10	0.40	0.41
Disruption of social and recreational activities	0.04	0.16	0.34	0.23	0.18	0.09	0.21	0.11	0.04	0.04	0.37	0.41
Physical and mental health concerns	-0.21	-0.09	0.18	0.11	0.00	0.06	0.17	0.00	0.00	0.00	0.37	0.42
Politics, government, and media	-0.05	0.15	0.00	0.08	0.08	0.01	0.01	0.00	0.00	0.00	0.36	0.36

