

Descriptive Epidemiological Assessment of the Relationship between the Global Burden of Influenza from 2017-2019 and COVID-19

Authors

Stefan David Baral¹, Katherine B. Rucinski², Jean Olivier Twahirwa Rwema¹, Amrita Rao¹, Neia Prata Menezes¹, Daouda Diouf³, Adeeba Kamarulzaman⁴, Nancy Phaswana-Mafuya⁵, Sharmistha Mishra^{6,7}

Affiliations

1. Department of Epidemiology, Johns Hopkins School of Public Health, Baltimore, MD
2. Department of International Health, Johns Hopkins School of Public Health, Baltimore, MD
3. Enda Santé, Dakar, Sénégal
4. Faculty of Medicine, Universiti Malaya, Kuala Lumpur, Malaysia
5. Department of Environmental Health, Faculty of Health Sciences, University of Johannesburg, South Africa
6. Department of Medicine, St. Michael's Hospital, Unity Health Toronto
7. Institute of Health Policy, Management and Evaluation, University of Toronto

Correspondence: Stefan D. Baral, MD, Department of Epidemiology, Johns Hopkins Bloomberg School of Public Health, 615 N Wolfe Street E E7146 Baltimore, MD 21205 (email: sbaral@jhu.edu)

Email Addresses of Authors

Stefan Baral: sbaral@jhu.edu
Katherine Rucinski: rucinski@jhu.edu
Jean Olivier Twahirwa Rwema: jtwahir1@jhmi.edu
Amrita Rao: arao24@jhu.edu
Neia Prata Menezes: nprata@jhu.edu
Daouda Diouf: dioufda@endatiersmonde.org
Adeeba Kamarulzaman: adeeba@ummc.edu.my
Nancy Phaswana-Mafuya: refilwep@uj.ac.za
Sharmistha Mishra: sharmistha.mishra@utoronto.ca

Abstract

Background

SARS-CoV-2 and influenza are lipid-enveloped viruses with differential morbidity and mortality but shared modes of transmission.

Objective

With a descriptive epidemiological framing, we assessed whether recent historical patterns of regional influenza burden are reflected in the observed heterogeneity in COVID-19 cases across regions of the world.

Methods

Weekly surveillance data reported by the World Health Organization from January 2017–December 2019 for influenza and through October 31, 2020 for COVID-19 were used to assess seasonal and temporal trends for influenza and COVID-19 cases across the seven World Bank regions.

Results

In regions with more pronounced influenza seasonality, COVID-19 epidemics have largely followed trends similar to those seen for influenza from 2017-2019. COVID-19 epidemics in countries across Europe and Central Asia and North America, have been marked by a first peak during the spring, followed by significant reductions in COVID-19 cases in the summer months, and a second wave in the fall. In Latin America and Caribbean, COVID-19 epidemics in several countries peaked in the summer, corresponding to months with highest influenza activity in the region. Countries from regions with less pronounced influenza activity including South Asia and Sub-Saharan Africa, showed more heterogeneity in COVID-19 epidemics seen to date. However, similarities in COVID-19 and influenza trends were evident within select countries irrespective of region.

Conclusion

Ecological consistency in COVID-19 trends seen to date with influenza trends suggest the potential for shared individual, structural, and environmental determinants of transmission. Using a descriptive epidemiological framework to assess shared regional trends for rapidly emerging respiratory pathogens with better-studied respiratory infections may provide further insights into the differential impacts of non-pharmacologic interventions and intersections with environmental conditions. Ultimately, forecasting trends and informing interventions for novel respiratory pathogens like COVID-19 should leverage epidemiologic patterns in the relative burden of past respiratory pathogens as prior information.

Introduction

The COVID-19 pandemic has affected each region of the world differently. As of December 2020, Europe and the Americas regions have registered the highest numbers of COVID-19 cases and deaths while South-East Asia, Sub-Saharan Africa, and the Western Pacific have experienced comparatively milder epidemics [1]. Heterogeneity in COVID-19 burden has also been observed within cities, across cities, and across regions within a country [2, 3]. This heterogeneity likely stems from differences in underlying population structure with respect to age distribution, population and housing density, access to health care, burden of comorbidities, socio-economic and structural barriers to engagement in health, environmental factors, and the breadth and intensity of public health interventions. Furthermore, there remains active investigation into the heterogeneity of effects of both COVID-19 and the associated response on potential syndemics including infectious diseases such as HIV and tuberculosis and non-communicable conditions including mental health, reproductive health, and malnutrition [4].

Similar to SARS-CoV-2, the virus that causes COVID-19 disease, influenza is a lipid-enveloped respiratory virus but with a more established evidence base for both effective non-pharmacologic intervention strategies and transmission dynamics [5-7]. Importantly, influenza is associated with a shorter incubation period and with lower mortality than the currently estimated SARS-CoV-2 infection case fatality rate [8-10]. The relative risks of indoor vs. outdoor transmission, risks for contact, droplet-based, and aerosolization-mediated transmission are better established for influenza [11-13]. Influenza seasonality and spatial distribution are not fully understood but likely reflect individual, population, and environmental determinants [14]. Moreover, the annual burden and associated mortality secondary to pandemic and non-pandemic seasonal influenza strains vary significantly. The 2009 H1N1 pandemic was estimated to cause over 60 million infections in the United States, and resulted in higher mortality among youth but fewer deaths overall as older people were more likely to be immune [15]. In 2017, there were an estimated 45 million cases of mostly H3N2 and Influenza B in the United States associated with higher mortality particularly among older adults given limited pre-existing immunity and limited vaccine effectiveness [16]. Environmental factors have been shown to explain, in part, the differences in influenza seasonality between temperate regions where cases peak during winter months and tropical regions which may have multiple peaks or intermittent influenza activity [17, 18]. However, even within specific regions, some countries show influenza transmission patterns that appear distinct from regional trends [19, 20].

There have been early reports suggesting shared individual and structural determinants of infection between influenza and SARS-CoV-2. In the United States, there is evidence of higher COVID-19 incidence, morbidity and mortality among African American communities secondary to underlying inequities including structural racism [21]. These racial disparities were also observed during the 2009 H1N1 influenza pandemic with similar drivers including higher risk of exposure due to inability to social distance, higher burden of comorbidities and limited access to health care among African American and other racialized communities [22-24]. Similar early trajectories of COVID-19 and 2009 H1N1 have been noted in South Africa with higher burdens initially among higher income communities reporting more travel with rapid epidemiologic

transition to lower income communities [25]. Finally, increases in COVID-19 in late May and June in some areas of the Southern hemisphere including countries across South America, Sub-Saharan Africa, East Asia and the Pacific were consistent with the timing of the traditional influenza season [26]. Specifically, in South Africa, epidemic growth is consistent with the influenza season and with epicenters of COVID-19 appearing to be similar to areas with increased influenza transmission [27, 28].

When this novel coronavirus emerged in early 2020, regional and national forecasting exercises drew on emerging data on the trajectory of detected cases of COVID-19 in the epicenters of China and Italy to translate their reproductive rates into best- and worst-case scenarios for populations all over the world. However, despite early comparison of the average mortality of influenza and SARS-CoV-2, there has not been a systematic evaluation of whether historical distributions in influenza burden are relevant in understanding the burden and distribution of SARS-CoV-2 infection. Descriptive epidemiological assessment within and across both influenza and COVID-19 may provide early insight into overlapping individual, structural, and environmental determinants of infection which have implications for public health responses. Moreover, documenting consistencies in the burden of disease across both pathogens may facilitate the generation of testable hypotheses, facilitating future analytic comparisons as well as future pandemic preparedness. In this study, we investigated global influenza transmission patterns from 2017 onwards to describe shared trends with the epidemiology of COVID-19.

Methods

Data abstraction and assessment of eligibility

Influenza

We used publicly available data to characterize temporal patterns of influenza across seven regions between 2017 and 2019. Organization of countries into regions was based on World Bank classifications, namely: East Asia and the Pacific, Europe and Central Asia, Latin America and the Caribbean, Middle East and North Africa, North America, South Asia, and Sub-Saharan Africa. Within each region, we assessed country-specific weekly reported cases of influenza, including both Influenza A and B, from 1 January 2017 to 31 December 2019. Data were abstracted from FluNet, a global web-based tool developed by the World Health Organization for influenza virologic surveillance, which captures weekly laboratory confirmed influenza cases. FluNet aggregates data from the National Influenza Centres of the Global Influenza Surveillance and Response System and other national influenza reference laboratories. Since more temperate zones in the Northern and Southern Hemispheres have generally opposing seasonal influenza trends, we report influenza case counts by calendar year from January 1 to December 31, which also facilitates comparisons with COVID-19. Finally, influenza case counts for the calendar year of 2020 were excluded given that public health measures focused on COVID-19 prevention and mitigation likely significantly decreased seasonal influenza cases for this time period [29]. The suspension of FluView, the core influenza reporting system in the United States, further precluded the inclusion 2020 influenza case counts.

We assessed patterns of missing data for each country and by year to determine eligibility for inclusion in analyses. For each year, countries where $\geq 90\%$ of available weekly case reports

were complete (assessed as the total number of non-missing records over the total number of all included weeks for that year) were included in analyses. For countries where data were <90% complete, we made the following determination: Countries where data missingness appeared to follow a seasonal pattern (e.g, data were missing only for weeks outside of the known influenza season, likely reflecting country-specific seasonal influenza reporting guidelines) were retained in analyses. Countries where weekly case counts were <90% complete and did not appear to follow a seasonal pattern, were denoted as missing.

COVID-19

We abstracted the daily number of COVID-19 cases reported between 1 January 2020 and 31 October 2020 for all countries and corresponding World Bank regions using data from the World Health Organization Coronavirus Situation Report. As we are in the first year of COVID-19, it was not possible to assess missingness of data similar to the methods used for influenza.

Regional Influenza and COVID-19 burden

Influenza

We assessed the overall burden of influenza for all included countries across and within each region. To do so, we summed the absolute number of weekly influenza cases for each region, country and year (January 1 to December 31 of each year) given the temporal variability in influenza seasons around the world. Countries were ranked in descending order within each region from highest to lowest number of absolute cases overall and for 2017, 2018, and 2019.

COVID-19

We assessed, and similarly ranked, in descending order, cumulative cases of COVID-19 as reported through 31 October within each region.

Comparison of regional burden of Influenza and COVID-19

We used regional plots for both influenza and COVID-19 cases to visualize cross-pathogen comparisons. For each region, we plotted the mean number of weekly influenza cases for the five highest ranked countries across 2017, 2018, and 2019. Influenza cases were averaged to ensure observed trends were robust to one-off spikes or changes to reporting systems in select years. Daily COVID-19 cases for the five highest ranked countries within each region were plotted using a 7-day moving average. We similarly plotted influenza and COVID-19 cases using per-capita proportions for these countries to facilitate standardized comparisons across countries and regions. Plots were visually inspected to confirm temporal patterns, and we described similarities or differences across and within all regions.

Within-country comparison of Influenza and COVID-19

We used plots to visually compare within-country trends for both influenza and COVID-19 over time. We assessed the top 20 countries with the highest burden of COVID-19 for each region, further restricting plots to those countries where influenza data were eligible for inclusion. As with regional comparisons, we plotted the mean number of weekly influenza cases across 2017, 2018, and 2019 and daily COVID-19 cases were plotted using a 7-day moving average.

Results

Influenza cases were assessed for 171 countries. For each year, more than half (ranging from 55.6% -56.7%) of all countries reported $\geq 90\%$ complete data (**Multimedia Appendix 1**). The proportion of countries where data were $< 90\%$ complete but followed a pattern of seasonal missingness were also included in influenza analyses, ranged from 22.8% in 2017 to 24.0% in 2019. Differences in data completion and patterns of missingness were evident across all regions. The overall influenza burden between 2017 and 2019 varied by region and by countries within all seven identified regions (**Table 1**). Regions with the highest absolute burden of influenza included North America (903,554 cases), Europe and Central Asia (599,820 cases), and East Asia and the Pacific (389,657 cases). Countries with the highest proportion of regional influenza cases were as follows: East Asia and the Pacific (China; 77.5%); Europe and Central Asia (the United Kingdom; 17.7%), Latin America and the Caribbean (Mexico, 20.2%), Middle East and North Africa (Qatar, 40.5%), North America (the United States, 82.9%), South Asia (India, 46.6%), and Sub-Saharan Africa (South Africa, 18.7%). Across regions, countries with the highest overall burden of influenza from 2017 to 2019, included the United States (749,472 cases), China (302,126 cases), Canada (154,082 cases), the United Kingdom (106,087 cases), and Norway (71,727 cases).

Regions with the highest absolute burden of COVID-19 included Latin America and the Caribbean (11,045,364 cases), Europe and Central Asia (9,197,241 cases), South Asia (9,107,653 cases), and North America (9,081,471 cases) (**Table 2**). Within each region, countries with the highest proportion of COVID-19 regional cases were as follows: East Asia and the Pacific (Indonesia; 34.2%); Europe and Central Asia (Russia; 17.6%), Latin America and the Caribbean (Brazil, 49.7%), Middle East and North Africa (Iran, 22.7%), North America (the United States, 97.5%), South Asia (India, 89.3%), and Sub-Saharan Africa (South Africa, 63.5%) (**Table 2**). Specific countries with the highest overall burden of COVID-19 cases as of October 31, 2020 included the United States (8,852,730 cases), India, (8,137,119 cases), Brazil (5,494,376 cases), Russia (1,618,116 cases), and France (1,299,278 cases) (**Table 2**).

Seasonal variation in influenza cases was observed within all regions. Seasonal trends were most pronounced across countries for North America, Europe and Central Asia, Middle East and North Africa, East Asia and the Pacific, and Latin America and the Caribbean (**Figure 1**). Seasonal trends were also evident but largely inconsistent across countries within South Asia and sub-Saharan Africa. These dynamics were mainly present when trends were assessed by per capita proportions instead of case counts (**Figure 2**).

COVID-19 epidemics generally followed trends similar to those observed for influenza from 2017-2019 in the regions with the most pronounced influenza seasonal trends (**Figure 2**). This was more apparent in Europe and Central Asia with an early wave of COVID-19 epidemics in several countries from March – May followed by significant drops in transmission in the summer and a second wave in the fall. With the exception of the United States that has seen sustained transmission over the year, Canada and Bermuda, have also had COVID-19 epidemics largely similar to those observed in European countries. In Latin America and the Caribbean, COVID-19 epidemics in Brazil, Argentina, Peru, Colombia peaked during the summer and started decreasing in fall corresponding to influenza trends in the region. Countries in sub-Saharan

Africa, South Asia, and Middle East and North Africa have shown more heterogeneity in their COVID-19 epidemics.

Similarities between COVID-19 and influenza trends were more marked within individual countries irrespective of region (**Multimedia Appendix 2**). Peaks of COVID-19 epidemics in exemplary countries, including Australia, Brazil, India, South Asia and South Africa, coincided with months of peak influenza activity in those countries from 2017-2019 (**Figure 3**).

Discussion

In this descriptive epidemiological study, we found ecological consistency between the seasonal influenza trends from 2017-2019 and the COVID-19 trends seen to date. Specifically, this similarity was highest in regions with more pronounced influenza seasonality including North America, Europe and Central Asia and Latin America and the Caribbean regions where peaks of COVID-19 cases coincided with periods of high influenza activity. In East Asia and the Pacific and Sub-Saharan Africa, there was more marked heterogeneity in COVID-19 pandemics in countries of these regions. However, within-country comparisons of 2017-2019 influenza epidemics and COVID-19 cases were evident irrespective of region. The ecological consistency in the seasonal trends of COVID-19 and the recent burden of influenza is suggestive of likely shared individual, structural, and environmental determinants of infection which has implications for public health.

Outside of public health interventions, there is generally less consensus on the determinants that potentiate or inhibit COVID-19 transmission. However, given decades of study, there is more information available on the individual, population-level, and environmental determinants of influenza. At the individual level, underlying immunity is related to previous exposure to similar strains and vaccine uptake and effectiveness. Effectiveness of vaccines depends on circulating influenza strains i.e. pandemic and non-pandemic, or seasonal, secondary to antigenic drift and shift of influenza viruses. Population-level characteristics include vaccine coverage and shield immunity, indoor air quality, population density, social norms, and health care infrastructure [30-32]. Finally, environmental factors affecting influenza include temperature, air pollution, and humidity [30, 33]. Given how rapidly COVID-19 has emerged, conclusions of different studies exploring the role of environmental conditions have differed significantly. One study found no associations between latitude and temperature with COVID-19 epidemic growth using a two-week exposure period in March across 144 geopolitical areas [34]. However, a “living” review leveraging data from December, 2019 onwards from nearly 4000 locations across the world showed significant differences in COVID-19 burden associated with temperature, humidity, pollution, and other environmental factors [35]. Collectively, these studies suggest the potential for at least some seasonal variation secondary to changes in environmental conditions in the transmission of SARS-CoV-2 similar to other respiratory pathogens, including influenza and other seasonal coronaviruses [36-39].

Influenza seasonality is more pronounced in more temperate areas of the Northern and Southern hemispheres consistent with opposing fall and winter seasons. A recent assessment of the seasonality of infectious pathogens included individual-level determinants such as growing immunity throughout an influenza season secondary to vaccination or exposure, that results in

achieving effective levels of shield immunity limiting transmission [40]. There has been some study of existing immunity to COVID-19 mediated via cross-reactivity with other coronaviruses [40, 41]. However, lesser population-wide immunity could result in sustained transmission even during times with less transmission of other respiratory pathogens. Influenza seasonality may also be secondary to population-level changes, including potentially higher crowding in colder weather, increased use of respite care and housing, people returning to work and school, and increased use of transit services that may collectively facilitate transmission. Environmental conditions may further affect individual susceptibility to infection as well as contact or respiratory droplet transmission patterns. While there is likely a relationship between testing infrastructure and influenza reporting, the consistency in the COVID-19 and influenza trends among countries within each region was notable. COVID-19 emerged in East Asia and the Pacific though there was relatively limited COVID-19 spread in several settings in March and April, 2020 potentially secondary to widely implemented non-pharmacologic interventions [29]. Notably, and consistent with influenza season, there was a resurgence of COVID-19 in Australia starting in July and ending in September, 2020 [42-44].

A hallmark of COVID-19 has been the role of social determinants of health with socioeconomic status, living conditions, access to health care, and underlying comorbidities being consistent predictors of COVID-19 incidence and mortality around the world [45, 46]. Moreover, structural factors including racism have been documented in several settings including the United States, United Kingdom, Sweden, and Canada, but likely relevant in many more settings not reporting on racial identity of those affected [47-49]. Notably, similar disparities were observed in the 2009 H1N1 pandemic in the United States though there has been limited documentation of socioeconomic disparities of influenza in most settings [22, 50]. While disparities are well documented for other infectious diseases such as HIV, these disparities evolve across cycles of transmission spanning years. Given how rapidly disparities emerged with COVID-19, interventions to address disparities may be observable over shorter time horizons and provide insight into effective interventions to address pervasive social health inequities. Secondary to intersections of differential access to health care and medical mistrust, the development of a generally effective vaccine has not mitigated disparities [51-53]. Leveraging frameworks focused on optimizing implementation of influenza vaccination strategies including increased equity will be critical in informing SARS-CoV-2 vaccines when available [54, 55]. Moreover, there has been significant research into studying correlates of protection for influenza vaccine development as well as the role of cellular immunity in complementing the humoral response which are both actively being studied for COVID-19 [56-59]. Finally, COVID-19 is rapidly increasing our understanding of post-viral morbidities including chronic fatigue syndrome and chronic myofascial pain syndromes as well as potential cardiovascular complications [60]. While post-viral complications have been described for other viruses, the known exposure to COVID-19 as an etiological agent may provide further insight into the mechanisms and potential interventions [61-66].

This study has several limitations. Risk of ecological fallacy is relevant where individuals in generally lower burden regions or countries may have high risks of acquisition and transmission secondary to micro-epidemics, including in those in congregate living settings, refugee and migrant work camps, long term care facilities, homeless shelters, and prisons. Missingness in data aggregated by FluNet is another limitation. We assumed that countries where influenza data

was missing in a seasonal pattern was a reflection of very few case counts and/or reduced reporting outside of the typical influenza season, and indeed seasonal “missingness” was most apparent for countries in the European region, where the influenza season has been well documented. However, by excluding countries with > 10% data missingness that did not follow a seasonal influenza pattern, several countries in the Pacific and in sub-Saharan Africa (e.g. Sudan) and were not included in the comparison of rankings despite high COVID-19 and influenza burden. There have been examples of COVID-19 resurgence outside of traditional influenza season such as in South Africa potentially due to the emergence of new variants of COVID-19 highlighting the complex intersection of drivers of transmission in specific subnational areas [67]. Finally, there have been dramatic decreases in the burden of influenza in the 2020 season likely due to an intersection of the effects of non-pharmacological interventions combined with decreases in international travel. It is unclear how this will affect vulnerability to future seasons of influenza [68].

In addition, absolute influenza and COVID-19 case counts were reported, rather than positivity rates, assuming that biases present in interpreting positivity rates (e.g. laboratory infrastructure to implement broad testing strategies) is likely reflected in the total number of cases, across both influenza and COVID-19. Heterogeneity in testing capacity, test kit availability, and in guidelines for prioritizing testing eligibility for COVID-19, may additionally challenge direct comparisons between COVID-19 and influenza case counts across countries. Testing capacity for COVID-19 has been highly dynamic, with continued limited capacity to meet screening and testing demands still evident in some countries [69]. In the case of influenza, country-wide variations in diagnostic testing strategies may belie differences in case detection. For instance, rapid influenza diagnostic tests are commonly used in clinical settings in many countries yet have documented lower sensitivity relative to other diagnostic methods [70].

Relatedly, contact tracing strategies for COVID-19 may vary across and within countries. As the pandemic has progressed, strategies have adapted to testing individuals with exposure to confirmed cases, irrespective of their symptomology [71]. This approach is not typically used for influenza. Finally, evidence suggests that non-pharmaceutical interventions for COVID-19 may concurrently limit influenza spread, due to their shared modes of transmission [72, 73]. While COVID-19 transmission has likely persisted due to unknown baseline population immunity, limited influenza detection may reflect decreased propensity for testing outside of the influenza season in some countries, as previously highlighted. Nonetheless, these data further underscore the potential utility to leverage our understanding and mitigation strategies for other respiratory pathogens to understand and combat COVID-19 and future pandemics due to respiratory pathogens.

The results presented here suggest shared regional differential distribution in the global burden of COVID-19 with that of influenza. This ecological overlap suggests that the underlying dynamics of transmission of influenza and COVID-19 are similar as they relate to spatial, seasonal, population structure and the disparities that lead to disproportionate vulnerabilities in various population groups. In considering the host-pathogen-environment framework commonly used for infectious diseases, emerging infections represent novel pathogens, but the populations and environment under which they emerge, and spread are the same. Similarly, the similarities observed here suggest the potential utility of informing COVID-19 prevention and mitigation

interventions with the vast data available characterizing critical issues including the relative risks of indoor vs. outdoor transmission, risks of aerosolization for influenza, and even optimal delivery of vaccines and chemoprophylaxis and treatment strategies. Ultimately, regional and national public health systems preparing and responding to the current and future waves of COVID-19 may benefit from evaluating the relative burden of past respiratory pathogens and the impact of non-pharmacologic, pharmacologic, and prophylactic intervention strategies as prior information when forecasting and implementing interventions, and when evaluating the transmission impact of interventions applied to date in the context of potential seasonal effects on transmission.

References

1. WHO. COVID-19 Weekly Epidemiological Update - Dec 27, 2020. Geneva, Switzerland: WHO, 2020.
2. Devlin H. Regional differences in Covid-19 transmission rate emerge in England. *The Guardian*. 2020 May 15, 2020.
3. CDC. Geographic Differences in COVID-19 Cases, Deaths, and Incidence — United States, February 12–April 7, 2020. USA: CDC, 2020.
4. Baral S, Rao A, Twahirwa Rwema JO, Lyons C, Cevik M, Kågesten AE, et al. Competing Health Risks Associated with the COVID-19 Pandemic and Response: A Scoping Review. *medRxiv*. 2021 Jan 8. PMID: 33442703. doi: 10.1101/2021.01.07.21249419.
5. Ahmed F, Zviedrite N, Uzicanin A. Effectiveness of workplace social distancing measures in reducing influenza transmission: a systematic review. *BMC Public Health*. 2018 Apr 18;18(1):518. PMID: 29669545. doi: 10.1186/s12889-018-5446-1.
6. Long Y, Hu T, Liu L, Chen R, Guo Q, Yang L, et al. Effectiveness of N95 respirators versus surgical masks against influenza: A systematic review and meta-analysis. *J Evid Based Med*. 2020 May;13(2):93-101. PMID: 32167245. doi: 10.1111/jebm.12381.
7. Feng S, Shen C, Xia N, Song W, Fan M, Cowling BJ. Rational use of face masks in the COVID-19 pandemic. *Lancet Respir Med*. 2020 May;8(5):434-6. PMID: 32203710. doi: 10.1016/s2213-2600(20)30134-x.
8. Lessler J, Reich NG, Brookmeyer R, Perl TM, Nelson KE, Cummings DA. Incubation periods of acute respiratory viral infections: a systematic review. *Lancet Infect Dis*. 2009 May;9(5):291-300. PMID: 19393959. doi: 10.1016/s1473-3099(09)70069-6.
9. Baud D, Qi X, Nielsen-Saines K, Musso D, Pomar L, Favre G. Real estimates of mortality following COVID-19 infection. *The Lancet Infectious Diseases*. doi: 10.1016/S1473-3099(20)30195-X.
10. Faust JS, Del Rio C. Assessment of Deaths From COVID-19 and From Seasonal Influenza. *JAMA Intern Med*. 2020 May 14. PMID: 32407441. doi: 10.1001/jamainternmed.2020.2306.
11. Yang W, Elankumaran S, Marr LC. Concentrations and size distributions of airborne influenza A viruses measured indoors at a health centre, a day-care centre and on aeroplanes. *J R Soc Interface*. 2011 Aug 7;8(61):1176-84. PMID: 21300628. doi: 10.1098/rsif.2010.0686.
12. Marr LC, Tang JW, Van Mullekom J, Lakdawala SS. Mechanistic insights into the effect of humidity on airborne influenza virus survival, transmission and incidence. *J R Soc Interface*. 2019 Jan 31;16(150):20180298. PMID: 30958176. doi: 10.1098/rsif.2018.0298.
13. Yang W, Marr LC. Dynamics of airborne influenza A viruses indoors and dependence on humidity. *PLoS One*. 2011;6(6):e21481. PMID: 21731764. doi: 10.1371/journal.pone.0021481.
14. Moriyama M, Hugentobler WJ, Iwasaki A. Seasonality of Respiratory Viral Infections. *Annu Rev Virol*. 2020 Mar 20. PMID: 32196426. doi: 10.1146/annurev-virology-012420-022445.
15. Hancock K, Veguilla V, Lu X, Zhong W, Butler EN, Sun H, et al. Cross-Reactive Antibody Responses to the 2009 Pandemic H1N1 Influenza Virus. *New England Journal of Medicine*. 2009;361(20):1945-52. PMID: 19745214. doi: 10.1056/NEJMoa0906453.
16. Allen JD, Ross TM. H3N2 influenza viruses in humans: Viral mechanisms, evolution, and evaluation. *Hum Vaccin Immunother*. 2018;14(8):1840-7. PMID: 29641358. doi: 10.1080/21645515.2018.1462639.
17. Tamerius JD, Shaman J, Alonso WJ, Bloom-Feshbach K, Uejio CK, Comrie A, et al. Environmental predictors of seasonal influenza epidemics across temperate and tropical climates. *PLoS Pathog*. 2013 Mar;9(3):e1003194. PMID: 23505366. doi: 10.1371/journal.ppat.1003194.

18. Hirve S, Newman LP, Paget J, Azziz-Baumgartner E, Fitzner J, Bhat N, et al. Influenza Seasonality in the Tropics and Subtropics - When to Vaccinate? PLoS One. 2016;11(4):e0153003. PMID: 27119988. doi: 10.1371/journal.pone.0153003.
19. Saha S, Chadha M, Shu Y, Group of Asian Researchers on I. Divergent seasonal patterns of influenza types A and B across latitude gradient in Tropical Asia. Influenza Other Respir Viruses. 2016 May;10(3):176-84. PMID: 26781162. doi: 10.1111/irv.12372.
20. Xu ZW, Li ZJ, Hu WB. Global dynamic spatiotemporal pattern of seasonal influenza since 2009 influenza pandemic. Infect Dis Poverty. 2020 Jan 3;9(1):2. PMID: 31900215. doi: 10.1186/s40249-019-0618-5.
21. Millett GA, Jones AT, Benkeser D, Baral S, Mercer L, Beyrer C, et al. Assessing Differential Impacts of COVID-19 on Black Communities. Ann Epidemiol. 2020 May 14. PMID: 32419766. doi: 10.1016/j.annepidem.2020.05.003.
22. Quinn SC, Kumar S, Freimuth VS, Musa D, Casteneda-Angarita N, Kidwell K. Racial disparities in exposure, susceptibility, and access to health care in the US H1N1 influenza pandemic. Am J Public Health. 2011 Feb;101(2):285-93. PMID: 21164098. doi: 10.2105/AJPH.2009.188029.
23. Bibbins-Domingo K. This Time Must Be Different: Disparities During the COVID-19 Pandemic. Ann Intern Med. 2020 Apr 28. PMID: 32343767. doi: 10.7326/M20-2247.
24. Kirby T. Evidence mounts on the disproportionate effect of COVID-19 on ethnic minorities. The Lancet Respiratory Medicine. 2020. doi: 10.1016/s2213-2600(20)30228-9.
25. Phaswana-Mafuya N, Shisana O, Gray G, Zungu N, Bekker L-G, Kuonza L, et al. The utility of 2009 H1N1 pandemic data in understanding the transmission potential and estimating the burden of COVID-19 in South Africa to guide mitigation strategies2020. ISBN: 2078-5135[escape].
26. Collyns D. Peru's coronavirus response was 'right on time' – so why isn't it working? (<https://www.theguardian.com/global-development/2020/may/20/peru-coronavirus-lockdown-new-cases>). Lima2020.
27. NICD. Weekly Respiratory Pathogens Surveillance Report - Week 23, 2020. South Africa: National Institute for Communicable Diseases, 2020.
28. NICD. National COVID-19 daily report - June 15, 2020. South Africa National Institute for Communicable Diseases Africa DoH-RoS; 2020.
29. Cowling BJ, Ali ST, Ng TWY, Tsang TK, Li JCM, Fong MW, et al. Impact assessment of non-pharmaceutical interventions against coronavirus disease 2019 and influenza in Hong Kong: an observational study. Lancet Public Health. 2020 May;5(5):e279-e88. PMID: 32311320. doi: 10.1016/s2468-2667(20)30090-6.
30. Lofgren E, Fefferman NH, Naumov YN, Gorski J, Naumova EN. Influenza seasonality: underlying causes and modeling theories. J Virol. 2007 Jun;81(11):5429-36. PMID: 17182688. doi: 10.1128/JVI.01680-06.
31. Luongo JC, Fennelly KP, Keen JA, Zhai ZJ, Jones BW, Miller SL. Role of mechanical ventilation in the airborne transmission of infectious agents in buildings. Indoor Air. 2016 Oct;26(5):666-78. PMID: 26562748. doi: 10.1111/ina.12267.
32. Fuhrmann C. The Effects of Weather and Climate on the Seasonality of Influenza: What We Know and What We Need to Know. Geography Compass. 2010:718-30. doi: 10.1111/j.1749-8198.2010.00343.x.
33. Lowen AC, Steel J. Roles of humidity and temperature in shaping influenza seasonality. J Virol. 2014 Jul;88(14):7692-5. PMID: 24789791. doi: 10.1128/JVI.03544-13.
34. Juni P, Rothenbuhler M, Bobos P, Thorpe KE, da Costa BR, Fisman DN, et al. Impact of climate and public health interventions on the COVID-19 pandemic: A prospective cohort study. CMAJ. 2020 May 8. PMID: 32385067. doi: 10.1503/cmaj.200920.

35. Ran Xu, Hazhir Rahmandad, Marichi Gupta, Catherine DiGennaro, Navid Ghaffarzadegan, Heresh Amini, et al. The Modest Impact of Weather and Air Pollution on COVID-19 Transmission. preprint. 2020.
36. Sajadi MM, Habibzadeh P, Vintzileos A, Shokouhi S, Miralles-Wilhelm F, Amoroso A. Temperature, Humidity, and Latitude Analysis to Estimate Potential Spread and Seasonality of Coronavirus Disease 2019 (COVID-19). *JAMA Netw Open*. 2020 Jun 1;3(6):e2011834. PMID: 32525550. doi: 10.1001/jamanetworkopen.2020.11834.
37. Causal empirical estimates suggest COVID-19 transmission rates are highly seasonal [database on the Internet]. 2020.
38. Climate affects global patterns of COVID-19 early outbreak dynamics [database on the Internet]. 2020.
39. Neher RA, Dyrdak R, Druelle V, Hodcroft EB, Albert J. Potential impact of seasonal forcing on a SARS-CoV-2 pandemic. *Swiss Med Wkly*. 2020 Mar 9;150:w20224. PMID: 32176808. doi: 10.4414/smw.2020.20224.
40. Cohen J. Why do dozens of diseases wax and wane with the seasons—and will COVID-19? *Science Mag*. 2020.
41. Grifoni A, Weiskopf D, Ramirez SI, Mateus J, Dan JM, Moderbacher CR, et al. Targets of T Cell Responses to SARS-CoV-2 Coronavirus in Humans with COVID-19 Disease and Unexposed Individuals. *Cell*. 2020 May 20. PMID: 32473127. doi: 10.1016/j.cell.2020.05.015.
42. Alison Rourke HD. Hong Kong imposes restrictions as Covid-19 cases rise across Asia *The Guardian*. 2020.
43. Packham C. Australia suffers 'disturbing' COVID-19 surge, state curbs wedding parties. *Reuters*. 2020.
44. Packham C. Australia tightens restrictions as COVID-19 cases top 10,000. *Reuters*. 2020.
45. Mishra S, Kwong JC, Chan AK, Baral SD. Understanding heterogeneity to inform the public health response to COVID-19 in Canada. *CMAJ : Canadian Medical Association journal = journal de l'Association medicale canadienne*. 2020 Jun 3. PMID: 32493741. doi: 10.1503/cmaj.201112.
46. Okonkwo NE, Aguwa UT, Jang M, Barré IA, Page KR, Sullivan PS, et al. COVID-19 and the US response: accelerating health inequities. *BMJ Evid Based Med*. 2020 Jun 3. PMID: 32493833. doi: 10.1136/bmjebm-2020-111426.
47. Millett GA, Jones AT, Benkeser D, Baral S, Mercer L, Beyrer C, et al. Assessing Differential Impacts of COVID-19 on Black Communities. *Annals of epidemiology*. 2020 2020/05/14/. doi: <https://doi.org/10.1016/j.annepidem.2020.05.003>.
48. Yaya S, Yeboah H, Charles CH, Otu A, Labonte R. Ethnic and racial disparities in COVID-19-related deaths: counting the trees, hiding the forest. *BMJ Glob Health*. 2020 Jun;5(6). PMID: 32513864. doi: 10.1136/bmjgh-2020-002913.
49. Hansson E, Albin M, Rasmussen M, Jakobsson K. Stora skillnader i överdödlighet våren 2020 utifrån födelseland. *Läkartidningen*. 2020;117.
50. Weinman AL, Sullivan SG, Vijaykrishna D, Markey P, Levy A, Miller A, et al. Epidemiological trends in notified influenza cases in Australia's Northern Territory, 2007-2016. *Influenza Other Respir Viruses*. 2020 May 23. PMID: 32445270. doi: 10.1111/irv.12757.
51. Hall LL, Xu L, Mahmud SM, Puckrein GA, Thommes EW, Chit A. A Map of Racial and Ethnic Disparities in Influenza Vaccine Uptake in the Medicare Fee-for-Service Program. *Adv Ther*. 2020 May;37(5):2224-35. PMID: 32274750. doi: 10.1007/s12325-020-01324-y.
52. Loiacono MM, Mahmud SM, Chit A, van Aalst R, Kwong JC, Mitsakakis N, et al. Patient and practice level factors associated with seasonal influenza vaccine uptake among at-risk adults in England, 2011 to 2016: An age-stratified retrospective cohort study. *Vaccine X*. 2020 Apr 9;4:100054. PMID: 32072152. doi: 10.1016/j.jvacx.2020.100054.

53. Akpalu Y, Sullivan SJ, Regan AK. Association between health insurance coverage and uptake of seasonal influenza vaccine in Brazos County, Texas. *Vaccine*. 2020 Feb 24;38(9):2132-5. PMID: 32008878. doi: 10.1016/j.vaccine.2020.01.029.
54. Wang L, Chen J, Marathe A. A Framework for Discovering Health Disparities among Cohorts in an Influenza Epidemic. *World Wide Web*. 2019 Nov;22(6):2997-3020. PMID: 31777450. doi: 10.1007/s11280-018-0608-8.
55. Webster F, Gidding H, Matthews V, Taylor R, Menzies R. What isn't measured isn't done - eight years with no progress in Aboriginal and Torres Strait Islander adult influenza and pneumococcal vaccination. *Australian and New Zealand journal of public health*. 2019 Dec;43(6):558-62. PMID: 31617660. doi: 10.1111/1753-6405.12944.
56. Ward BJ, Pillet S, Charland N, Trepanier S, Couillard J, Landry N. The establishment of surrogates and correlates of protection: Useful tools for the licensure of effective influenza vaccines? *Hum Vaccin Immunother*. 2018 Mar 4;14(3):647-56. PMID: 29252098. doi: 10.1080/21645515.2017.1413518.
57. Sekine T, Perez-Potti A, Rivera-Ballesteros O, Straling K, Gorin JB, Olsson A, et al. Robust T cell immunity in convalescent individuals with asymptomatic or mild COVID-19. Preprint; bioRxiv. 2020. doi: 10.1101/2020.06.29.174888.
58. Trombetta CM, Montomoli E. Influenza immunology evaluation and correlates of protection: a focus on vaccines. *Expert Rev Vaccines*. 2016 Aug;15(8):967-76. PMID: 26954563. doi: 10.1586/14760584.2016.1164046.
59. Gallais F, Velay A, Wendling MJ, Nazon C, Partisani M, Jean Sibilia J, et al. Intrafamilial Exposure to SARS-CoV-2 Induces Cellular Immune Response without Seroconversion. medRxiv (preprint). 2020. doi: 10.1101/2020.06.21.20132449.
60. Long B, Brady WJ, Koyfman A, Gottlieb M. Cardiovascular complications in COVID-19. *Am J Emerg Med*. 2020:S0735-6757(20)30277-1. PMID: 32317203. doi: 10.1016/j.ajem.2020.04.048.
61. Maggio MC, Cimaz R, Alaimo A, Comparato C, Di Lisi D, Corsello G. Kawasaki disease triggered by parvovirus infection: an atypical case report of two siblings. *J Med Case Rep*. 2019 Apr 24;13(1):104. PMID: 31014402. doi: 10.1186/s13256-019-2028-5.
62. Puttaraksa K, Pirttinen H, Karvonen K, Nykky J, Naides SJ, Gilbert L. Parvovirus B19V Nonstructural Protein NS1 Induces Double-Stranded Deoxyribonucleic Acid Autoantibodies and End-Organ Damage in Nonautoimmune Mice. *The Journal of Infectious Diseases*. 2018;219(9):1418-29. doi: 10.1093/infdis/jiy614.
63. Iglesias-Gamarra A, Restrepo JF, Matteson EL. Small-vessel vasculitis. *Curr Rheumatol Rep*. 2007 Aug;9(4):304-11. PMID: 17688840. doi: 10.1007/s11926-007-0049-3.
64. Crudele GD, Amadasi A, Marasciuolo L, Rancati A, Gentile G, Zoja R. A case report of lethal post-viral lymphocytic myocarditis with exclusive location in the right ventricle. *Leg Med (Tokyo)*. 2016 Mar;19:1-4. PMID: 26980245. doi: 10.1016/j.legalmed.2016.01.005.
65. Smatti MK, Cyprian FS, Nasrallah GK, Al Thani AA, Almishal RO, Yassine HM. Viruses and Autoimmunity: A Review on the Potential Interaction and Molecular Mechanisms. *Viruses*. 2019;11(8):762. PMID: 31430946. doi: 10.3390/v11080762.
66. Klok FA, Boon G, Barco S, Endres M, Geelhoed JJM, Knauss S, et al. The Post-COVID-19 Functional Status scale: a tool to measure functional status over time after COVID-19. *Eur Respir J*. 2020 Jul;56(1). PMID: 32398306. doi: 10.1183/13993003.01494-2020.
67. Tegally H, Wilkinson E, Giovanetti M, Iranzadeh A, Fonseca V, Giandhari J, et al. Emergence and rapid spread of a new severe acute respiratory syndrome-related coronavirus 2 (SARS-CoV-2) lineage with multiple spike mutations in South Africa. medRxiv. 2020:2020.12.21.20248640. doi: 10.1101/2020.12.21.20248640.
68. Olsen SJ, Azziz-Baumgartner E, Budd AP, Brammer L, Sullivan S, Pineda RF, et al. Decreased Influenza Activity During the COVID-19 Pandemic - United States, Australia, Chile,

- and South Africa, 2020. *MMWR Morb Mortal Wkly Rep.* 2020 Sep 18;69(37):1305-9. PMID: 32941415. doi: 10.15585/mmwr.mm6937a6.
69. Omori R, Mizumoto K, Chowell G. Changes in testing rates could mask the novel coronavirus disease (COVID-19) growth rate. *Int J Infect Dis.* 2020 May;94:116-8. PMID: 32320809. doi: 10.1016/j.ijid.2020.04.021.
70. Chartrand C, Pai M. How accurate are rapid influenza diagnostic tests? *Expert Review of Anti-Infective Therapy.* 2012 Jun 2012 2014-03-07;10(6):615-7. PMID: 1022262284; 22734950. doi: <http://dx.doi.org/10.1586/eri.12.49>.
71. CDC. Health Departments: Interim Guidance on Developing a COVID-19 Case Investigation & Contact Tracing Plan. US Department of Health and Human Services, 2020.
72. Wiemken TL, Shacham E. Identifying potential undocumented COVID-19 using publicly reported influenza-like-illness and laboratory-confirmed influenza disease in the United States: An approach to syndromic surveillance? *Am J Infect Control.* 2020 Aug;48(8):961-3. PMID: 32437754. doi: 10.1016/j.ajic.2020.05.007.
73. Cowling BJ, Ali ST, Ng TWY, Tsang TK, Li JCM, Fong MW, et al. Impact assessment of non-pharmaceutical interventions against coronavirus disease 2019 and influenza in Hong Kong: an observational study. *The Lancet Public Health.* 2020;5(5):e279-e88. doi: 10.1016/s2468-2667(20)30090-6.

TABLE 1. Influenza cases for top 15 countries by World Bank region, overall and by year from January 1 2017 to December 31 2019*

	Overall Influenza			2019 Influenza			2018 Influenza			2017 Influenza		
		Cases	% of regional total		Cases	% of regional total		Cases	% of regional total		Cases	% of regional total
Sub-Saharan Africa		18,930	100.0		7,521	100.0		5,785	100.0		5,624	100.0
	South Africa	3,534	18.7	Ghana	1,172	15.6	South Africa	1,160	20.1	South Africa	1,210	21.5
	Ghana	2,383	12.6	South Africa	1,164	15.5	Ghana	742	12.8	Senegal	820	14.6
	Senegal	1,783	9.4	Mauritius	570	7.6	Senegal	480	8.3	Ghana	469	8.3
	Madagascar	1,117	5.9	Togo	501	6.7	Zambia	391	6.8	Cameroon	447	7.9
	Cameroon	1,098	5.8	Senegal	483	6.4	Tanzania	330	5.7	Uganda	404	7.2
	Ivory Coast	1,057	5.6	Ivory Coast	458	6.1	Cameroon	319	5.5	Madagascar	368	6.5
	Togo	988	5.2	Madagascar	451	6.0	Madagascar	298	5.2	Ivory Coast	337	6.0
	Zambia	971	5.1	Zambia	426	5.7	Ivory Coast	262	4.5	Tanzania	304	5.4
	Tanzania	876	4.6	Cameroon	332	4.4	Togo	254	4.4	Togo	233	4.1
	Mauritius	767	4.1	Tanzania	242	3.2	Burkina Faso	236	4.1	Mali	165	2.9
	Uganda	621	3.3	Mali	235	3.1	Kenya	216	3.7	Zambia	154	2.7
	Mali	544	2.9	Kenya	220	2.9	Ethiopia	203	3.5	Ethiopia	117	2.1
	Ethiopia	534	2.8	Ethiopia	214	2.8	Central African Republic	177	3.1	Niger	117	2.1
	Kenya	461	2.4	Uganda	179	2.4	Mali	144	2.5	Central African Republic	109	1.9
	Burkina Faso	398	2.1	Niger	144	1.9	Mauritius	102	1.8	Mauritius	95	1.7
East Asia & Pacific		389,657	100.0		158,173	100.0		101,937	100.0		129,547	100.0
	China	302,126	77.5	China	122,757	77.6	China	80,297	78.8	China	99,072	76.5
	Japan	29,449	7.6	Australia	14,002	8.9	Japan	9,076	8.9	Australia	10,509	8.1
	Australia	28,775	7.4	Japan	10,029	6.3	Australia	4,264	4.2	Japan	10,344	8.0
	Republic of Korea	4,958	1.3	Republic of Korea	1,702	1.1	Republic of Korea	1,952	1.9	Republic of Korea	1,304	1.0
	Thailand	3,640	0.9	Thailand	1,568	1.0	Singapore	1,106	1.1	Thailand	1,288	1.0
	Singapore	3,258	0.8	Singapore	1,154	0.7	Thailand	784	0.8	Indonesia	1,045	0.8
	New Zealand	2,377	0.6	Malaysia	1,115	0.7	Indonesia	710	0.7	Singapore	998	0.8
	Malaysia	2,270	0.6	New Zealand	957	0.6	Lao PDR	661	0.6	New Zealand	945	0.7
	Indonesia	2,251	0.6	Mongolia	909	0.6	Malaysia	493	0.5	Vietnam	793	0.6
	Lao PDR	2,039	0.5	Myanmar	806	0.5	New Zealand	475	0.5	Lao PDR	788	0.6
	Mongolia	1,746	0.4	Lao PDR	590	0.4	Korea, Dem.	474	0.5	Malaysia	662	0.5

							People's Rep.					
	Vietnam	1,493	0.4	New Caledonia	541	0.3	Vietnam	345	0.3	Mongolia	533	0.4
	Myanmar	1,340	0.3	Indonesia	496	0.3	Mongolia	304	0.3	Myanmar	431	0.3
	New Caledonia	1,036	0.3	Vietnam	355	0.2	New Caledonia	291	0.3	Philippines	268	0.2
	Korea, Dem. People's Rep.	851	0.2	Philippines	346	0.2	Cambodia	234	0.2	Cambodia	226	0.2
South Asia		31,992	100.0		17,313	100.0		5,401	100.0		9,278	100.0
	India	14,895	46.6	India	10,428	60.2	India	1,880	34.8	India	2,587	27.9
	Nepal	5,678	17.7	Nepal	2,569	14.8	Nepal	957	17.7	Sri Lanka	2,361	25.4
	Sri Lanka	3,794	11.9	Bangladesh	1,783	10.3	Sri Lanka	947	17.5	Nepal	2,152	23.2
	Bangladesh	3,647	11.4	Pakistan	1,002	5.8	Bangladesh	673	12.5	Bangladesh	1,191	12.8
	Bhutan	1,487	4.6	Bhutan	679	3.9	Maldives	393	7.3	Bhutan	444	4.8
	Pakistan	1,002	3.1	Sri Lanka	486	2.8	Bhutan	364	6.7	Maldives	435	4.7
	Maldives	916	2.9	Afghanistan	278	1.6	Afghanistan	187	3.5	Afghanistan	108	1.2
	Afghanistan	573	1.8	Maldives	88	0.5						
Middle East & North Africa		67,610	100.0		31,348	100.0		21,224	100.0		15,038	100.0
	Qatar	27,363	40.5	Qatar	8,365	26.7	Qatar	11,450	53.9	Qatar	7,548	50.2
	Iran	9,445	14.0	Iran	7,387	23.6	Egypt	2,072	9.8	Oman	3,024	20.1
	Kuwait	6,601	9.8	Kuwait	6,601	21.1	Israel	1,602	7.5	Israel	1,145	7.6
	Oman	5,788	8.6	Saudi Arabia	2,423	7.7	Iran	1,430	6.7	Saudi Arabia	700	4.7
	Egypt	4,986	7.4	Egypt	2,339	7.5	Oman	1,388	6.5	Iran	628	4.2
	Israel	4,543	6.7	Israel	1,796	5.7	Saudi Arabia	1,179	5.6	Egypt	575	3.8
	Saudi Arabia	4,302	6.4	Oman	1,376	4.4	Malta	880	4.1	Malta	505	3.4
	Malta	1,385	2.0	Jordan	366	1.2	Tunisia	315	1.5	Tunisia	342	2.3
	Jordan	891	1.3	Lebanon	262	0.8	Algeria	310	1.5	Jordan	252	1.7
	Tunisia	860	1.3	Tunisia	203	0.6	Jordan	273	1.3	Algeria	134	0.9
	Bahrain	488	0.7	Bahrain	197	0.6	Bahrain	202	1.0	Lebanon	96	0.6
	Lebanon	481	0.7	Algeria	33	0.1	Lebanon	123	0.6	Bahrain	89	0.6
	Algeria	477	0.7									
Latin America & Caribbean		93,712	100.0		33,308	100.0		31,606	100.0		28,798	100.0
	Mexico	18,976	20.2	Chile	7,371	22.1	Brazil	7,012	22.2	Argentina	6,566	22.8
	Argentina	17,658	18.8	Mexico	6,963	20.9	Mexico	5,667	17.9	Mexico	6,346	22.0
	Brazil	16,477	17.6	Argentina	6,477	19.4	Argentina	4,615	14.6	Brazil	6,006	20.9
	Chile	15,783	16.8	Brazil	3,459	10.4	Chile	4,192	13.3	Chile	4,220	14.7

	Colombia	3,549	3.8	Paraguay	1,498	4.5	Bolivia	2,068	6.5	Paraguay	948	3.3
	Nicaragua	3,501	3.7	Nicaragua	1,419	4.3	Colombia	1,425	4.5	Bolivia	873	3.0
	Paraguay	3,378	3.6	Colombia	1,316	4.0	Nicaragua	1,320	4.2	Colombia	808	2.8
	Bolivia	3,371	3.6	Ecuador	615	1.8	Peru	1,061	3.4	Nicaragua	762	2.6
	Peru	1,651	1.8	Costa Rica	505	1.5	Paraguay	932	2.9	Costa Rica	591	2.1
	Ecuador	1,393	1.5	Jamaica	479	1.4	Ecuador	778	2.5	El Salvador	288	1.0
	Costa Rica	1,266	1.4	Cuba	463	1.4	Haiti	340	1.1	Panama	262	0.9
	Guatemala	863	0.9	Bolivia	430	1.3	Honduras	322	1.0	Peru	241	0.8
	Cuba	846	0.9	Panama	382	1.1	Guatemala	322	1.0	Guatemala	228	0.8
	Panama	846	0.9	Haiti	358	1.1	Cuba	238	0.8	Uruguay	197	0.7
	Haiti	809	0.9	Peru	349	1.0	Dominican Republic	203	0.6	Cuba	145	0.5
North America		903,554	100.0		310,724	100.0		334,093	100.0		258,737	100.0
	United States of America	749,472	82.9	United States of America	267,528	86.1	United States of America	267,611	80.1	United States of America	214,333	82.8
	Canada	154,082	17.1	Canada	43,196	13.9	Canada	66,482	19.9	Canada	44,404	17.2
Europe & Central Asia		599,020	100.0		224,554	100.0		235,606			138,870	100.0
	United Kingdom	106,087	17.7	United Kingdom	42,448	18.9	United Kingdom	44,120	18.7	United Kingdom	19,519	14.1
	Norway	71,727	12.0	France	25,405	11.3	Norway	32,966	14.0	Norway	16,479	11.9
	France	62,672	10.5	Norway	22,282	9.9	France	21,610	9.2	France	15,657	11.3
	Spain	49,971	8.3	Russian Federation	19,340	8.6	Sweden	21,407	9.1	Russian Federation	14,635	10.5
	Russian Federation	49,289	8.2	Spain	17,232	7.7	Spain	19,973	8.5	Spain	12,766	9.2
	Sweden	46,472	7.8	Switzerland	14,096	6.3	Denmark	17,120	7.3	Sweden	11,242	8.1
	Switzerland	35,856	6.0	Sweden	13,823	6.2	Russian Federation	15,314	6.5	Switzerland	9,842	7.1
	Denmark	33,599	5.6	Denmark	11,835	5.3	Switzerland	11,918	5.1	Denmark	4,644	3.3
	Italy	13,539	2.3	Portugal	6,634	3.0	Austria	5,143	2.2	Slovenia	3,906	2.8
	Portugal	11,904	2.0	Italy	6,361	2.8	Ireland	4,984	2.1	Netherlands	3,428	2.5
	Netherlands	11,430	1.9	Netherlands	5,166	2.3	Italy	4,382	1.9	Latvia	3,121	2.2
	Austria	11,311	1.9	Croatia	4,823	2.1	Portugal	3,984	1.7	Italy	2,796	2.0
	Ireland	10,964	1.8	Ireland	4,201	1.9	Slovenia	3,020	1.3	Austria	2,071	1.5
	Slovenia	10,502	1.8	Austria	4,097	1.8	Netherlands	2,836	1.2	Croatia	1,796	1.3
	Croatia	9,216	1.5	Slovenia	3,576	1.6	Latvia	2,785	1.2	Ireland	1,779	1.3

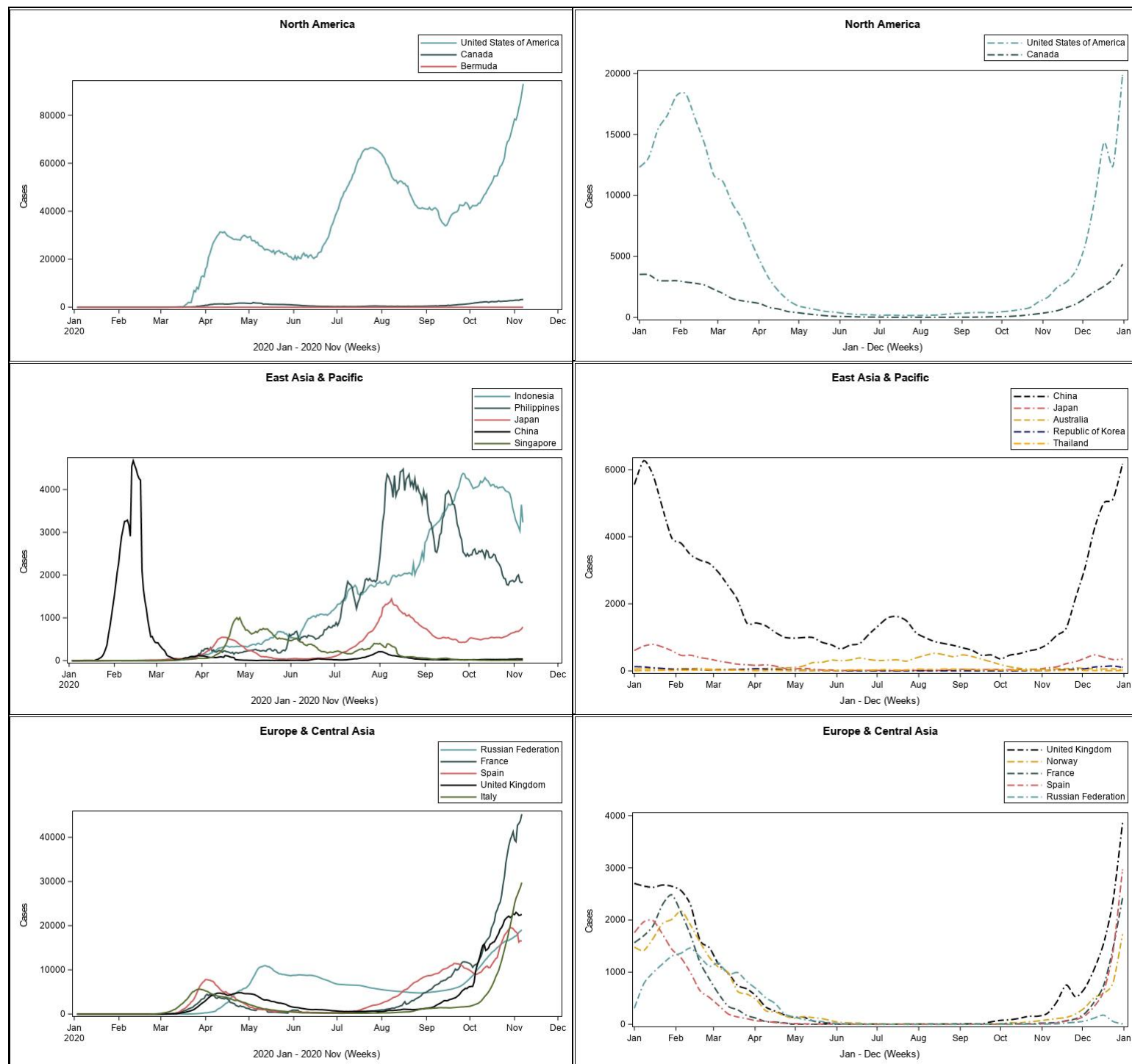
*Excludes countries with missing influenza data

TABLE 2. COVID-19 cases for top 15 countries by World Bank region, from January 1 2020 to October 31 2020

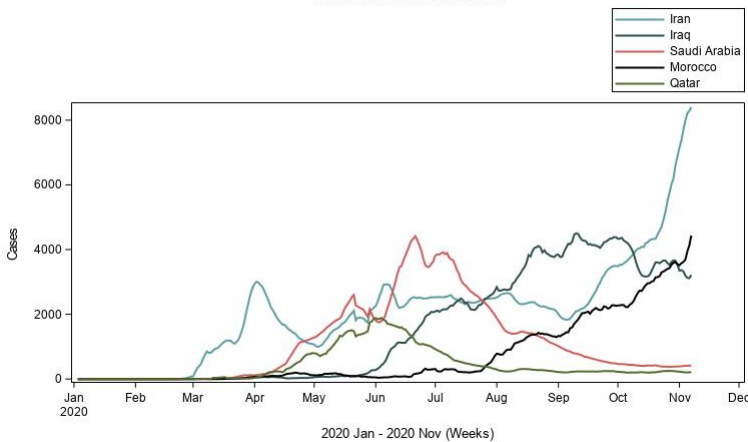
	COVID-19 cases	% of regional total
Sub-Saharan Africa	1,139,329	100.0
South Africa	723,682	63.5
Ethiopia	95,789	8.4
Nigeria	62,691	5.5
Kenya	53,797	4.7
Ghana	48,055	4.2
Cameroon	21,793	1.9
Cote d'Ivoire	20,628	1.8
Madagascar	16,968	1.5
Zambia	16,415	1.4
Senegal	15,593	1.4
Sudan	13,804	1.2
Namibia	12,907	1.1
Mozambique	12,777	1.1
Uganda	12,410	1.1
Guinea	12,020	1.1
East Asia & Pacific	1,191,632	100.0
Indonesia	406,945	34.2
Philippines	378,933	31.8
Japan	100,392	8.4
China	91,893	7.7
Singapore	58,003	4.9
Myanmar	51,496	4.3
Malaysia	30,889	2.6
Australia	27,582	2.3
Korea, Rep.	26,511	2.2
French Polynesia	7,262	0.6
Guam	4,579	0.4
Thailand	3,780	0.3
New Zealand	1,601	0.1
Vietnam	1,177	0.1
Papua New Guinea	589	0.0
South Asia	9,107,653	100.0
India	8,137,119	89.3
Bangladesh	406,364	4.5
Pakistan	332,186	3.6
Nepal	168,235	1.8
Afghanistan	41,334	0.5
Maldives	11,643	0.1
Sri Lanka	10,424	0.1
Bhutan	348	0.0
Middle East & North Africa	2,662,465	100.0
Iran	604,952	22.7
Iraq	470,633	17.7
Saudi Arabia	346,880	13.0
Morocco	215,294	8.1
Qatar	132,343	5.0
United Arab Emirates	131,508	4.9
Kuwait	125,337	4.7
Oman	114,434	4.3
Egypt	107,385	4.0
Bahrain	81,466	3.1

	Lebanon	79,529	3.0
	Jordan	69,306	2.6
	West Bank and Gaza	64,741	2.4
	Libya	60,628	2.3
	Tunisia	58,029	2.2
Latin America & Caribbean		11,045,364	100.0
	Brazil	5,494,376	49.7
	Argentina	1,143,800	10.4
	Colombia	1,053,122	9.5
	Mexico	912,811	8.3
	Peru	897,594	8.1
	Chile	508,571	4.6
	Ecuador	167,147	1.5
	Bolivia	141,484	1.3
	Panama	132,045	1.2
	Dominican Republic	126,332	1.1
	Costa Rica	107,570	1.0
	Guatemala	107,339	1.0
	Honduras	96,150	0.9
	Venezuela	91,280	0.8
	Puerto Rico	65,743	0.2
North America		2,662,465	100.0
	United States of America	8,852,730	97.5
	Canada	228,542	2.5
	Bermuda	199	0.0
Europe & Central Asia		9,197,241	100.0
	Russian Federation	1,618,116	17.6
	France	1,299,278	14.1
	Spain	1,212,190	13.2
	United Kingdom	989,749	10.8
	Italy	647,674	7.0
	Germany	518,753	5.6
	Belgium	441,807	4.8
	Ukraine	387,481	4.2
	Turkey	373,154	4.1
	Netherlands	340,974	3.7
	Poland	340,834	3.7
	Czech Republic	323,673	3.5
	Israel	314,244	3.4
	Romania	235,586	2.6
	Switzerland	153,728	1.7

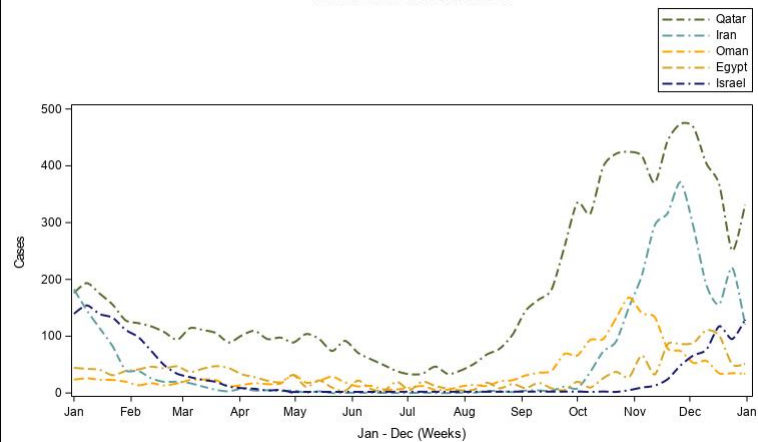
Figure 1. Weekly trends in new COVID-19 cases (left panel, solid lines) and Influenza cases (right panel, dashed lines) presented by World Bank region. Daily COVID-19 cases were extracted from WHO and are presented as a 7-day moving average between January 1 2020 and October 31 2020. Weekly influenza cases were extracted from FluNet and averaged by week across all reporting years (2017-2019).



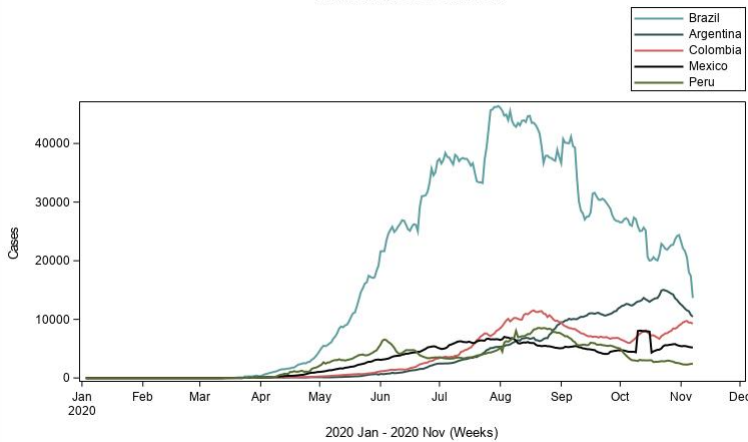
Middle East & North Africa



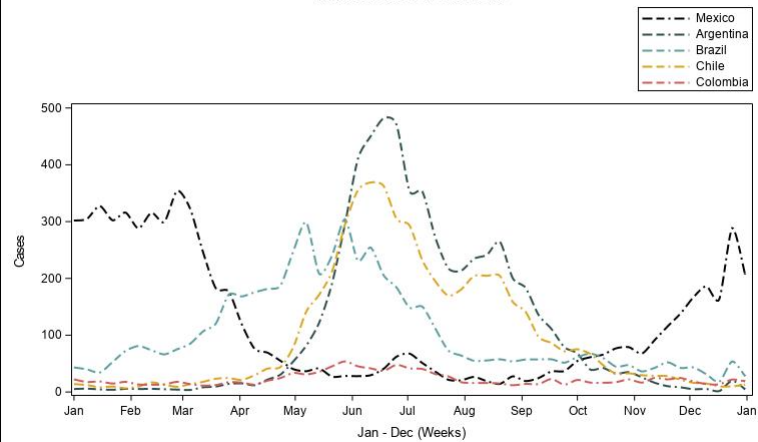
Middle East & North Africa



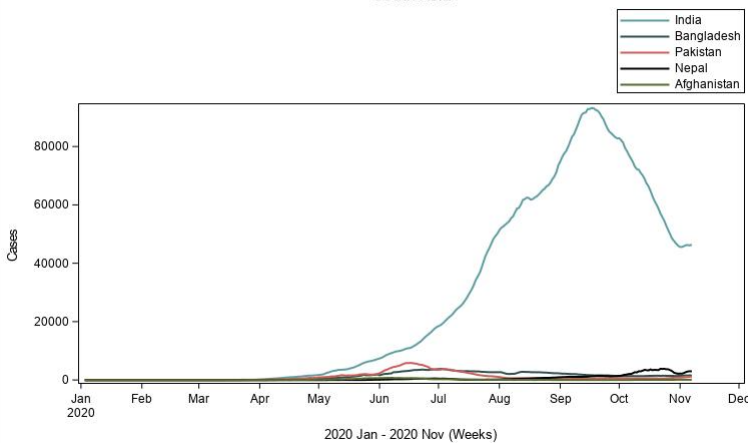
Latin America & Caribbean



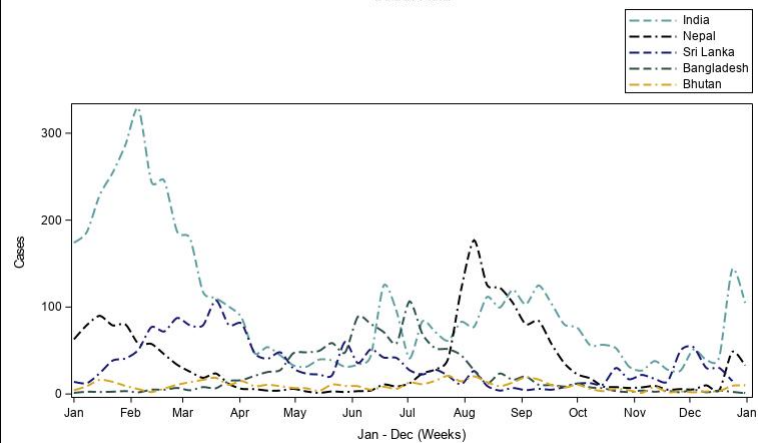
Latin America & Caribbean



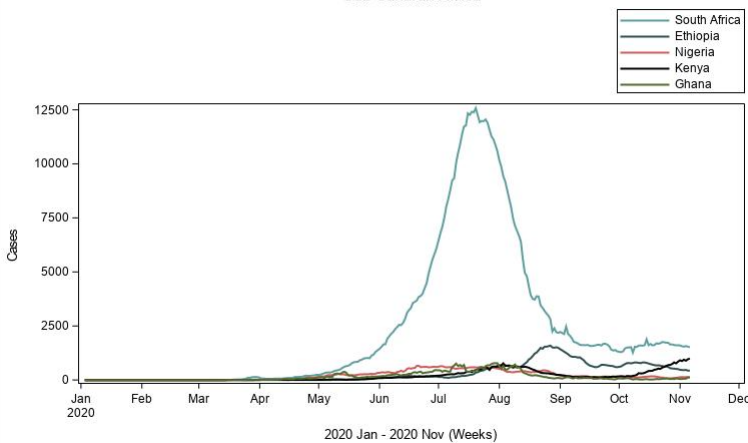
South Asia



South Asia



Sub-Saharan Africa



Sub-Saharan Africa

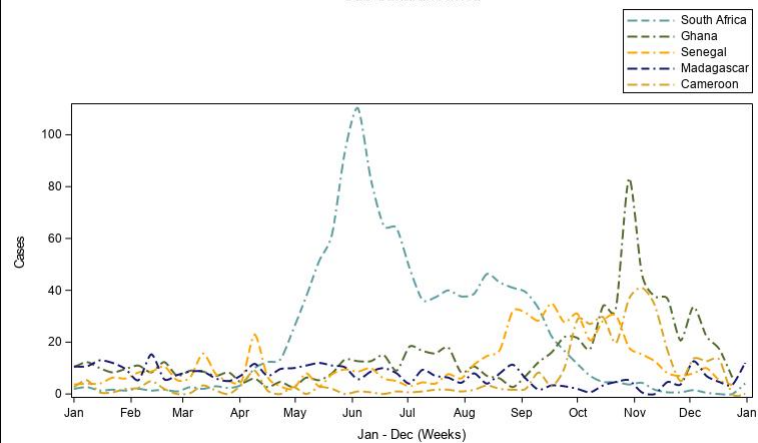
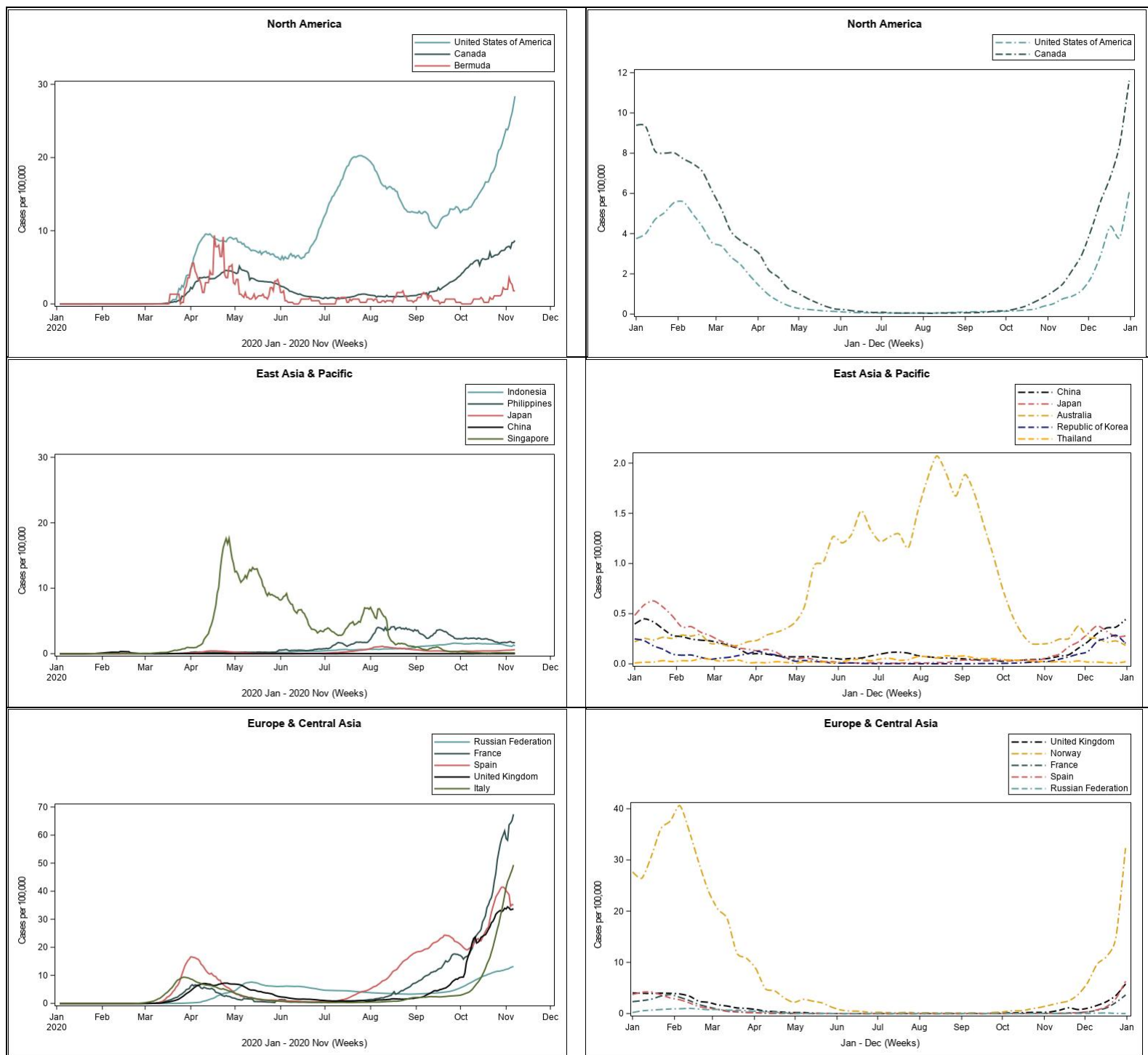


Figure 2. Weekly trends in new COVID-19 cases per capita (left panel, solid lines) and Influenza cases per capita (right panel, dashed lines) presented by World Bank region. Daily COVID-19 cases were extracted from WHO and are presented as a 7-day moving average, per 100,000 persons, between January 1 2020 and October 31 2020. Weekly influenza cases were extracted from FluNet and averaged by week, per 100,000 persons, across all reporting years (2017-2019).



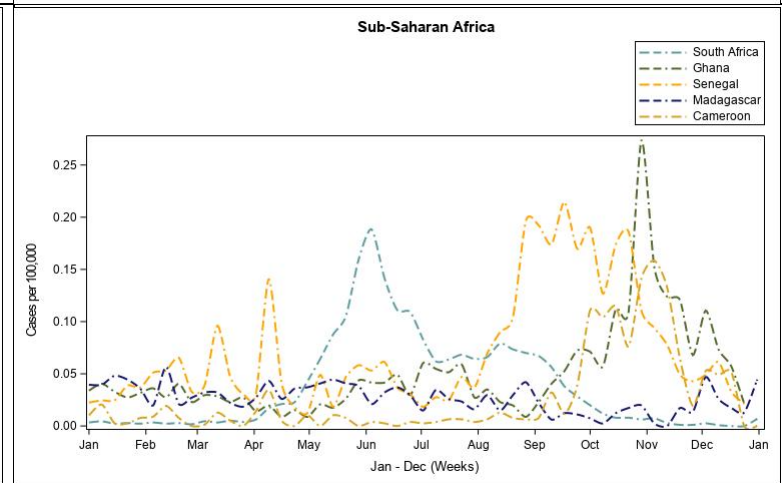
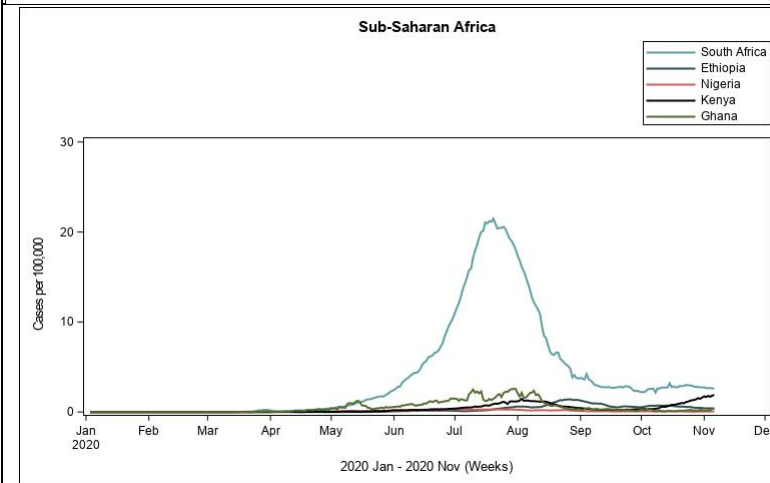
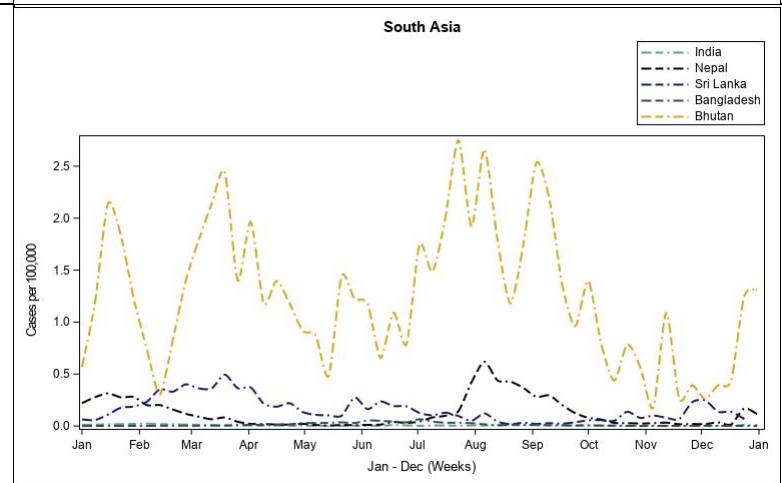
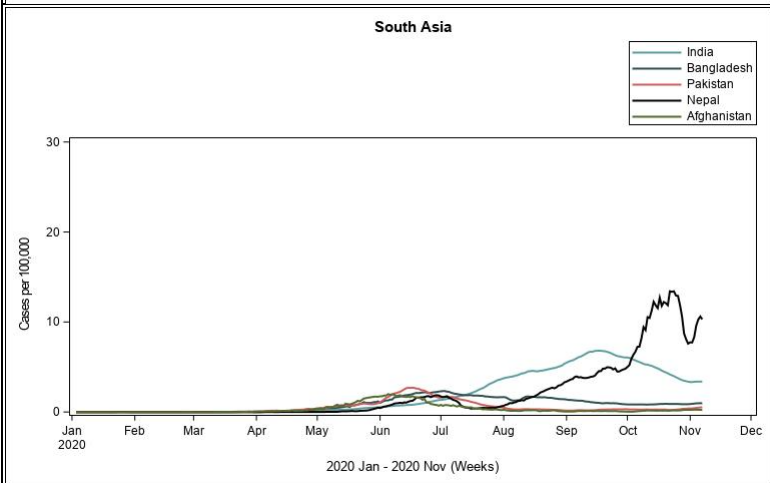
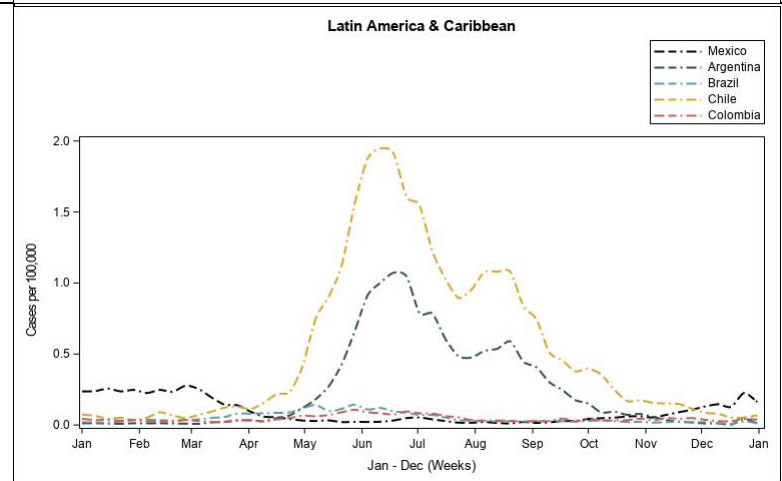
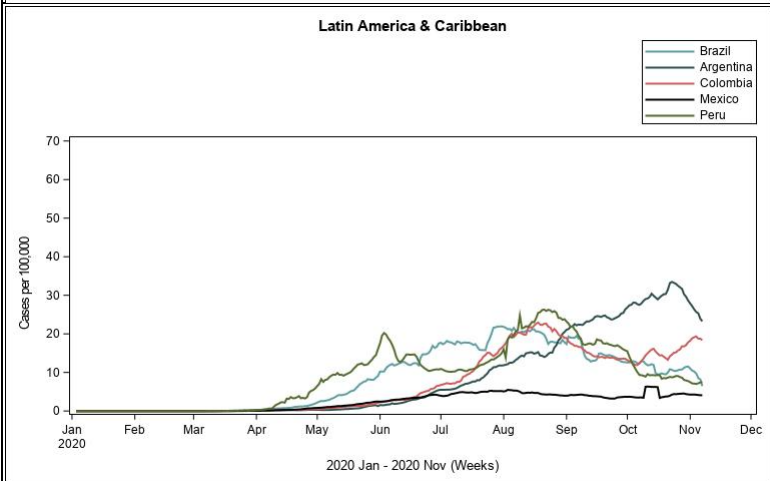
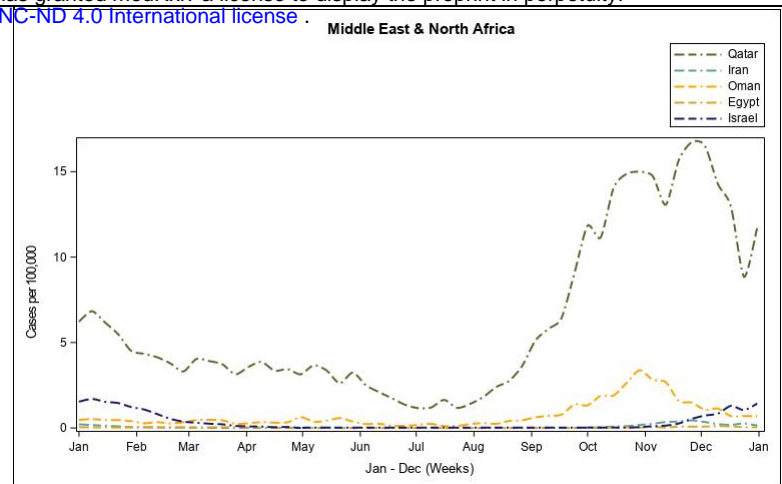
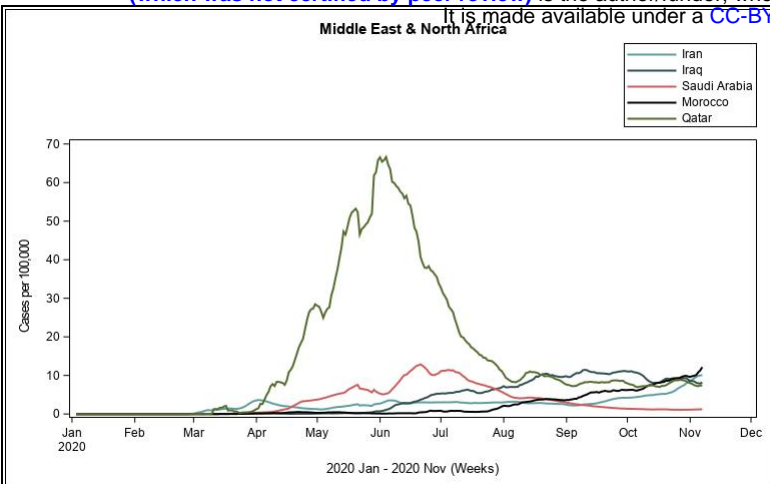


Figure 3. Weekly trends in new COVID-19 cases (solid lines) and Influenza cases (dashed lines) presented by country. Daily COVID-19 cases were extracted from WHO and are presented as a 7-day moving average between January 1 2020 and October 31 2020. Weekly influenza cases were extracted from FluNet (Weeks) and averaged by week across all reporting years (2017-2019).

