

1 **Anti-phospholipid antibodies in COVID-19 are different from those detectable** 2 **in the anti-phospholipid syndrome.**

3 Maria Orietta Borghi^{*,†}, Asmaa Beltagy^{*,‡}, Emirena Garrafa^{§,¶}, Daniele Curreli^{*}, Germana
4 Cecchini^{**}, Caterina Bodio^{*}, Claudia Grossi^{*}, Simonetta Blengino^{††}, Angela Tincani^{††}, Franco
5 Franceschini^{††}, Laura Andreoli^{††}, Maria Grazia Lazzaroni^{††}, Silvia Piantoni^{††}, Stefania Masneri^{††},
6 Francesca Crisafulli^{††}, Duilio Brugnoli[¶], Maria Lorenza Muiesan^{§§}, Massimo Salvetti^{§§}, Gianfranco
7 Parati^{††}, Erminio Torresani^{**}, Michael Mahler^{¶¶}, Francesca Heilbron^{††}, Francesca Pregnolato^{*},
8 Martino Pengo^{††}, Francesco Tedesco^{*}, Nicola Pozzi^{***,#}, Pier Luigi Meroni^{*,#}

9
10 ^{*}Istituto Auxologico Italiano, IRCCS, Immunorheumatology Research Laboratory, Milan, Italy.

11 [†]Department of Clinical Sciences and Community Health, University of Milan, Milan, Italy.

12 [‡]Rheumatology and Clinical Immunology Department, Faculty of Medicine, Alexandria University,
13 Alexandria, Egypt.

14 [§]Department of Molecular and Translational Medicine, University of Brescia, Brescia, Italy.

15 [¶]Department of Laboratory Diagnostics, ASST Spedali Civili, Brescia, Italy.

16 ^{**}Istituto Auxologico Italiano, IRCCS, Department of Chemical Chemistry, Milan, Italy.

17 ^{††}Istituto Auxologico Italiano, IRCCS, Department of Cardiovascular, Neural and Metabolic
18 Sciences, San Luca Hospital, Milan, Italy.

19 ^{††}Rheumatology and Clinical Immunology Unit, Department of Clinical and Experimental
20 Sciences, ASST Spedali Civili and University of Brescia, Brescia, Italy.

21 ^{§§}UOC 2° Medicina, Department of Clinical and Experimental Sciences, ASST Spedali Civili and
22 University of Brescia, Brescia, Italy.

23 ^{¶¶}Inova Diagnostics, Inc., San Diego, CA, USA.

24 ^{***}Department of Biochemistry and Molecular Biology, Saint Louis University School of Medicine,
25 St. Louis, MO, USA.

26 **Correspondence**

27 **#Corresponding author:**

28 Pier Luigi Meroni, Immunorheumatology Research Laboratory, Istituto Auxologico Italiano, Via
29 Zucchi 18, 20095 Cusano Milanino (MI), Italy

30 Phone number: +39-02-619113033; e-mail: pierluigi.meroni@unimi.it

31 **#Co-corresponding Author:**

32 Nicola Pozzi, Department of Biochemistry and Molecular Biology, Saint Louis University School
33 of Medicine, 1100 South Grand Blvd., St. Louis, MO 63104, USA

34 Phone number: +1-314-9779241; e-mail: nicola.pozzi@health.slu.edu

35
36
37 **Key words** Anti-phospholipid antibodies, β_2 glycoprotein I, prothrombin, autoimmunity, COVID-
38 19, thrombosis.

39
40 **Running Head:** aPL antibodies and COVID-19

41
42 Total words: 1709

43 Figures N.3

44 Tables: N.2

45

46

47

48

49 **Abstract**

50

51 **Background.** Critically ill patients with coronavirus disease 2019 (COVID-19) have a profound
52 hypercoagulable state and often develop coagulopathy which leads to organ failure and death.
53 Because of a prolonged activated partial-thromboplastin time (aPTT), a relationship with anti-
54 phospholipid antibodies (aPL) has been proposed, but results are controversial. Functional assays
55 for aPL (i.e., lupus anticoagulant) can be influenced by concomitant anticoagulation and/or high
56 levels of C reactive protein. The presence of anti-cardiolipin (aCL), anti-beta2-glycoprotein I (anti-
57 β_2 GPI) and anti-phosphatidylserine/prothrombin (aPS/PT) antibodies was not investigated
58 systematically. Epitope specificity of anti- β_2 GPI antibodies was not reported.

59 **Objective.** To evaluate the prevalence and the clinical association of aPL in a large cohort of
60 COVID-19 patients, and to characterize the epitope specificity of anti- β_2 GPI antibodies.

61 **Methods.** ELISA and chemiluminescence assays were used to test 122 sera of patients suffering
62 from severe COVID-19. Of them, 16 displayed major thrombotic events.

63 **Results.** Anti- β_2 GPI IgG/IgA/IgM were the most frequent in 15.6/6.6/9.0% of patients, while aCL
64 IgG/IgM were detected in 5.7/6.6% by ELISA. Comparable values were found by
65 chemiluminescence. aPS/PT IgG/IgM were detectable in 2.5 and 9.8% by ELISA. No association
66 between thrombosis and aPL was found. Reactivity against domain 1 and 4-5 of β_2 GPI was limited
67 to 3/58 (5.2%) tested sera for each domain and did not correlate with aCL/anti- β_2 GPI nor with
68 thrombosis.

69 **Conclusions.** aPL show a low prevalence in COVID-19 patients and are not associated with major
70 thrombotic events. aPL in COVID-19 patients are mainly directed against β_2 GPI but display an
71 epitope specificity different from antibodies in antiphospholipid syndrome.

72

73

74 **1. Introduction**

75 Critically ill patients with coronavirus disease 2019 (COVID-19) have a profound hypercoagulable
76 state and often develop thrombosis in veins, arteries and in the microcirculation [1,2]. Recent
77 analysis showed several coagulation abnormalities in these patients, including prominent elevation
78 of fibrin/fibrinogen degradation products (i.e., D-dimer) and a prolonged activated partial-
79 thromboplastin time (aPTT). While high levels of D-dimer are consistent with sustained activation
80 of the clotting and fibrinolytic cascades, the combination of prolonged aPTT and both arterial and
81 venous thrombosis was, however, surprising, and it is reminiscent of a clinical scenario known as
82 antiphospholipid syndrome (APS) [3].

83 Looking at the causes for aPTT prolongation, recent studies have shown that lupus anticoagulant
84 (LA) can be detected in a significant percentage of COVID-19 samples [4-6]. Since LA is often
85 caused by aPL, these findings support the idea that aPL may play a role in COVID-19[7]. However,
86 it is important to point out that LA is a very sensitive assay and its outcome can be influenced by
87 several factors, most notably heparin administration [8] and a profound inflammatory state
88 characterized by high levels of C reactive protein (CRP) [9,10]. Both of them are present in
89 COVID-19 patients [11].

90 Another method to detect aPL that is in principle insensitive to anticoagulation and other
91 confounding agents relies on the detection and quantification of autoantibodies using solid phase
92 assays[3]. Using this method, the presence of aPL was recently reported in a handful of case reports
93 and small cohorts of patients [4,6,7,12,13]. While encouraging, this data is limited and its
94 interpretation remains controversial, with some investigators proposing an important role of aPL in
95 COVID-19 patients[7] while others suggesting a very poor correlation between aPL and thrombotic
96 events [14]. There is no information on the antigen specificity of COVID-19 aPL in comparison
97 with APS antibodies. Such information and a larger study, possibly multicenter, may be
98 instrumental to clarify the real clinical value of these autoantibodies.
99

100 **2. Materials and methods**

102 *2.1 Patients*

103 A total of 122 patients were enrolled from two COVID-19 referral centers in Lombardia. All
104 patients tested positive to SARS-CoV-2, and classified as severe or critical COVID-19 [11]. Mean
105 age was 68.5 (\pm SD 16.4) years; 77 were men and 45 women. No diagnosis of previous
106 autoimmune diseases was made; six patients had a thrombotic event (three arterial and three
107 venous) in the past clinical history. Eighty-seven patients suffering from APS were also tested for
108 anti-cardiolipin (aCL) and anti- β_2 GPI IgG/IgM [15].The study was approved by the Ethics
109 Committees (Istituto Auxologico Italiano 3-04-2020 - Milan and ASST Spedali Civili NP4187 -
110 Brescia).
111

112 *2.2 Detection of aPL*

113 Anti-cardiolipin and anti- β_2 GPI IgG/IgA/IgM were detected by chemiluminescence immunoassay
114 (CIA; Quanta Flash, Inova, San Diego, CA, US) and a home-made ELISA as described [15,16].
115 Anti- β_2 GPI domain 1 IgG (anti-D1) were detected by CIA[15,16], IgG anti-D4-5 by a home-made
116 ELISA, as described [15,16]. Anti-phosphatidylserine/prothrombin (aPS/PT) IgG/IgM were
117 detected by a commercial ELISA as reported[17].
118

119 *2.3 Statistical analysis*

120 Data were analyzed using R v3.4.0. Descriptive statistics was used to summarize data. Associations
121 and differences between categorical or continuous variables were tested by Fisher's exact test and
122 non-parametric Mann-Whitney test, respectively. A p-value <0.05 was considered statistically
123 significant.

124

125 **3. Results**

126

127 **3.1 Patients**

128 Table 1 reports the median with minimum and maximum values for different coagulation and
129 inflammation parameters in 122 severe or critical COVID-19 patients. In particular, prolonged
130 aPTT (>30 sec) was found in 57.6% while PT INR values were above the cut-off in 24.8% of the
131 cases. Most of the patients (120/122) were on anticoagulation with low molecular weight heparin
132 (70% on therapeutic and the remaining on prophylactic dosage). Despite anticoagulation, we
133 observed sixteen thrombotic events (13.1%, 8 in veins and 8 in arteries). These statistics are in
134 agreement with previous reports[2,18-23] and document a systemic inflammation and a
135 coagulopathy in our patients.

136

137 **3.2 Anti-cardiolipin and anti- β_2 GPI antibody testing.**

138 In the APS field, testing for LA is not recommended when patients are on heparin, since the
139 presence of heparin, even if neutralized, may lead to false positive results [8]. Likewise, high levels
140 CRP, such as those found in our cohort of patients, have been shown to prolong aPTT
141 independently from the presence of aPL[9,10]. On these bases, the presence of aPL was researched
142 using solid phase assays, and not LA. First, we investigated the presence of aCL and anti- β_2 GPI,
143 two APS classification criteria[3]. Testing was independently performed in Milan and Brescia,
144 using harmonized methodologies[24]. The prevalence of COVID-19 patients positive for aCL and
145 anti- β_2 GPI IgG/IgA/IgM detected by ELISA and CIA is summarized in Table 2. The ELISA raw
146 data are shown in Fig. 1. We found IgG/IgM aCL in 5.7/6.6% of patients, whereas anti- β_2 GPI
147 IgG/IgA/IgM were found in 15.6/6.6/9.0% of patients. Similar values were obtained for aCL
148 antibodies using CIA (Table 1), whereas a slightly lower sensitivity was obtained for anti- β_2 GPI
149 antibodies [25]. The positivity for aCL and anti- β_2 GPI antibodies was at medium/low titer in
150 contrast with the medium/high titers found in the control group of primary APS (Figure 1). There is
151 no association between aPL positivity and thrombotic events.

152

153 **3.3 Epitope characterization of anti- β_2 GPI antibodies**

154 Fifty-eight sera were also tested with D1 and D4-5-coated plates in order to characterize their
155 epitope specificity. Fig. 2B shows that three out of 58 samples reacted with D1, while in Fig. 2C,
156 three samples tested positive for D4-5. None of the sera was positive for both domains and all
157 displayed a weak reactivity with no association with thrombosis.

158

159 **3.4 Anti-phosphatidylserine/prothrombin antibody testing**

160 Prolonged aPTT (>30 sec) was found in 57.6% of the patients. Although aPS/PT are not included in
161 the APS classification laboratory tests, they can be associated with a prolonged aPTT and with the
162 presence of LA[17]. Consequently, we looked at the presence of aPS/PT antibodies in our cohort
163 and we found fifteen out of 122 sera positive for aPS/PT (12.3%), mostly of the IgM isotype (12 out
164 15) and at a low titer (Fig. 3). There was no association between prolonged aPTT and the presence
165 of aPS/PT antibodies nor with thrombotic events in our COVID-19 cohort.

166

167 **4. Discussion**

168 Taken together, our data shows a low prevalence of classification criteria aPL in COVID-19
169 patients. In this regard, our study confirms recent studies obtained with smaller cohorts of
170 patients[4,14,23]. Importantly, our data also shows that aPL are slightly more reactive towards
171 β_2 GPI-coated plates as compared to CL-coated ones and that, regardless of the nature of aPL, there
172 is no association between aPL positivity and thrombotic events ($p=1$).

173 A striking difference between the autoantibody profile in COVID-19 patients as compared to the
174 one in APS concerned the titers of aPL. Medium/low aPL titers were consistently found in the

175 patients with COVID-19. By contrast, medium/high titers are usually found in APS patients (Fig.
176 1). This difference suggests that aPL found in COVID-19 may be different from aPL found in APS
177 and led us to further investigate the epitope specificity of anti- β_2 GPI antibodies. We focused on
178 autoantibodies directed against the N-terminal domain 1 (anti-D1) or the C-terminal domains 4-5
179 (anti-D4-5) of the molecule[16] (Fig. 2A). This is because anti-D1 antibodies are associated with an
180 increased risk of thrombosis and pregnancy complications in APS[15,16,26]. By contrast, anti D4-5
181 antibodies are associated neither with vascular nor obstetric APS manifestations[15,27].
182 Furthermore, anti D4-5 antibodies are also reported at high levels in the so called asymptomatic
183 aPL carriers and are frequently found in non-APS (e.g. patients with leprosy, atopic dermatitis,
184 atherosclerosis and in children born to mothers with systemic autoimmune diseases) [27]. We found
185 that three out of 58 samples reacted with D1, and three samples tested positive for D4-5. None of
186 the sera was positive for both domains and all displayed a weak reactivity. Although the number of
187 the investigated sera is relatively small, this finding is quite different from the results found in APS
188 in which almost all the sera positive for the whole β_2 GPI molecule also reacted with domain D1 at
189 high titer[15,26]. Furthermore, at variance with APS patients, none of the anti-D1 positive patients
190 displayed thrombotic events[26].

191 Approximately fifty-seven per cent of COVID-19 patients has prolonged aPTT. Yet, only a small
192 proportion of COVID-19 patients carry aCL and anti- β_2 GPI antibodies. This suggests that other
193 factors must be responsible for the prolonged aPTT phenomenon. Since aPS/PT can be associated
194 with a prolonged aPTT and with the presence of LA[17], we tested our cohort for aPS/PT
195 antibodies. We found a small percentage (12.3%) of positive sera, mostly of the IgM isotype (12 out
196 15) and at a low titer. Again there was no association between prolonged aPTT and the presence of
197 aPS/PT antibodies nor with thrombotic events in our COVID-19 cohort. This indicates that aPS/PT
198 are not responsible for the prolongation of aPTT nor are predictors of adverse clinical outcomes.
199 Furthermore, in contrast to what we would have expected in APS[28], we found no associations
200 between the presence of aPS/PT, aCL and anti- β_2 GPI antibodies. This data is in line with the
201 unusual epitope specificity of anti- β_2 GPI antibodies documented in Fig. 2, supporting the
202 hypothesis that aPL found in COVID-19 patients are different from aPL found in APS patients.
203 Whether COVID-19 aPL are similar to the ones found in other infectious diseases such as HCV,
204 HBV and HIV[29] remains to be determined.

205 In conclusion, while medium/high aPL titers with D1 specificity are associated with vascular events
206 in APS, low antibody titers with reactivity against β_2 GPI epitope(s) different from D1 or D4,5 can
207 be found in COVID-19. This may explain the lack of association with thrombotic events in
208 COVID-19. In addition, our data do not support the hypothesis that aPL can be the main cause of
209 prolonged aPTT in these patients. Although low titer aPL are not predictive of vascular events in
210 the APS, it is important to keep in mind that COVID-19 patients suffer from an acute form of
211 systemic inflammation with complement activation[30], which may be responsible for endothelial
212 perturbation. In this context, since β_2 GPI can accumulate on the activated endothelium at high
213 density, even low titers of aPL may become pathogenic thus potentiating or even triggering
214 thrombus formation, especially when anticoagulation is suspended. A comparable condition in
215 which low titers of aPL can cause substantial damage is seen in obstetric APS, where high levels of
216 β_2 GPI can be found in the placenta[31]. Hence, while transitory aPL are likely to be clinically
217 irrelevant in COVID-19 patients as in other infections[29], detection of aPL may be useful for
218 identifying patients potentially at risk of thrombosis after the hospital discharge. Accordingly, an
219 anticoagulant prophylaxis could be justified before a confirmatory assay[3].

220

221 5. Authorship

222 M.O. Borghi, M. Pengo, A. Tincani, F. Franceschini, F. Tedesco, N. Pozzi, P.L. Meroni designed
223 the study; S. Blengino, G. Parati, F. Heilbron, M. Pengo, M.G. Lazzaroni, M.L. Muiesan, M.

224 Salvetti collected clinical samples; E. Garrafa, D. Curreli, G. Cecchini, C. Bodio, C. Grossi, S.
225 Piantoni, S. Masneri, F. Crisafulli, D. Brugnoli, E. Torresani, M. Mahler, L. Andreoli, performed
226 research; M.O. Borghi, A. Beltagy, F. Pregonato, F. Tedesco, N. Pozzi, P.L. Meroni analyzed data;
227 M.O. Borghi, F. Tedesco, N. Pozzi, P.L. Meroni wrote the manuscript. All authors reviewed and
228 approved the manuscript.

229

230 **6. Acknowledgment**

231

232 The study was in part supported by IRCCS Istituto Auxologico Italiano - Ricerca Corrente 2019
233 (PL Meroni), a grant from the Italian Ministry of Foreign Affairs and International Cooperation
234 (MAECI) for foreign citizens and Italian citizens living abroad (A. Beltagy) and a National
235 Institutes of Health Research Grant HL150146 (N. Pozzi). The Authors would like to thank: Drs. N.
236 Carabellese and G. Martini (Department of Laboratory Diagnostics; ASST Spedali Civili, Brescia,
237 Italy) for their valuable collaboration; all the physicians of the COVID-19 Units of the IRCCS
238 Istituto Auxologico Italiano (Milan) and the ASST Spedali Civili (Brescia).

239

240 **7. Conflict of interests**

241

242 M. Mahler is an employee at Inova Diagnostics, Inc. All the other authors declared no conflict of
243 interest.

244

245

246

247

248

249

250

251

252

253

254

255

256

257

258

259

260

261

262

263

264

265

266

267

268

269

270

271

272

273

274

275

276

277

8. References

278

279

1. Carsana L., Sonzogni A., Nasr A., Rossi R.S., Pellegrinelli A., Zerbi P. *et al.* Pulmonary post-mortem findings in a large series of COVID-19 cases from Northern Italy. *medRxiv* 2020:2020.04.19.20054262. doi:10.1016/S1473-3099(20)30434-5[Epub ahead of print].

280

281

282

2. Tang N., Li D., Wang X., Sun Z. Abnormal coagulation parameters are associated with poor prognosis in patients with novel coronavirus pneumonia. *J Thromb Haemost* 2020; 18: 844-7. doi:10.1111/jth.14768

283

284

285

3. Garcia D., Erkan D. Diagnosis and Management of the Antiphospholipid Syndrome. *N Engl J Med* 2018; 378: 2010-21. doi:10.1056/NEJMra1705454

286

287

4. Harzallah I., Debliguis A., Drénou B. Lupus anticoagulant is frequent in patients with

288

289

Covid-19. *J Thromb Haemost* 2020; 10.1111/jth.14867. doi:10.1111/jth.14867

290

291

5. Bowles L., Platton S., Yartey N., Dave M., Lee K., Hart D.P. *et al.* Lupus Anticoagulant and Abnormal Coagulation Tests in Patients with Covid-19. *N Engl J Med* 2020; NEJMc2013656. doi:10.1056/NEJMc2013656

292

293

6. Pineton de Chambrun M., Frere C., Miyara M., Amoura Z., Martin-Toutain I. Mathian A. *et al.* High Frequency of Antiphospholipid Antibodies in Critically-ill COVID-19 Patients: a Link with Hypercoagulability? *J Intern Med* 2020; 10.1111/joim.13126. doi:10.1111/joim.13126

294

295

7. Zhang Y., Xiao M., Zhang S., Xia P., Cao W., Jiang W. *et al.* Coagulopathy and Antiphospholipid Antibodies in Patients with Covid-19. *N Engl J Med* 2020; 382: e38. doi:10.1056/NEJMc2007575

296

297

298

8. Martinuzzo M.E., Barrera L.H., D 'Adamo M.A., Otaso J.C., Gimenez M.I., Oyhamburu J. Frequent False-positive results of lupus anticoagulant tests in plasmas of patients receiving the new oral anticoagulants and enoxaparin. *Int J Lab Hematol* 2014; 36: 144-50. doi:10.1111/ijlh.12138

299

300

301

302

9. Schouwers S.M.E., Delanghe J.R., Devreese K.M.J. Lupus Anticoagulant (LAC) testing in patients with inflammatory status: Does C-reactive protein interfere with LAC test results? *Thromb Res* 2010; 125: 102-4. doi:10.1016/j.thromres.2009.09.001

303

304

305

10. Ruinmans-Koerts J., Ahmed-Ousenkova Y.M., Kaasjager H.A.H., Hendriks-van Wijhe C., Hovens M.M.C. When to screen for lupus anticoagulant? Influence of testing during acute phase and consequences for clinical practise. *Lupus* 2015; 24: 1233-5. doi:10.1177/0961203315583540

306

307

308

11. Chen G., Wu D., Guo W., Cao Y., Huang D., Wang H. *et al.* Clinical and immunological features of severe and moderate coronavirus disease 2019. *J Clin Invest* 2020; 130: 2620-9. doi:10.1172/JCI137244

309

310

311

12. Zuo Y., Estes S.K., Gandhi A.A., Yalavarthi S., Ali R.A., Shi H. *et al.* Prothrombotic antiphospholipid antibodies in COVID-19. *medRxiv* 2020: 2020.06.15.20131607. doi:10.1101/2020.06.15.20131607 [Epub ahead of print].

312

313

13. Xiao M., Zhang Y., Zhang S., Qin X., Xia P., Cao W. *et al.* Brief Report: Anti-phospholipid antibodies in critically ill patients with Coronavirus Disease 2019 (COVID-19). *Arthritis Rheumatol* 2020; 10.1002/art.41425. doi:10.1002/art.41425

314

315

14. Galeano-Valle F, Oblitas CM, Ferreiro-Mazón MM, Alonso-Muñoz J., Del Toro-Cervera J., Di Natale M. *et al.* Antiphospholipid antibodies are not elevated in patients with severe COVID-19 pneumonia and venous thromboembolism. *Thromb Res* 2020; 192: 113-5. doi:10.1016/j.thromres.2020.05.017

316

317

318

319

320

321

322

- 323 15. Chighizola C.B., Pregnolato F., Andreoli L., Bodio C., Cesana L., Comerio C. *et al.* Beyond
324 thrombosis: Anti- β 2GPI domain 1 antibodies identify late pregnancy morbidity in anti-
325 phospholipid syndrome. *J Autoimmun* 2018; 90: 76-83. doi:10.1016/j.jaut.2018.02.002
- 326 16. Durigutto P., Grossi C., Borghi M.O., Macor P., Pregnolato F., Raschi E. *et al.* New insight
327 into antiphospholipid syndrome: antibodies to β 2glycoprotein I-domain 5 fail to induce
328 thrombi in rats. *Haematologica* 2019; 104: 819-26. doi:10.3324/haematol.2018.198119
- 329 17. Tincani A., Morozzi G., Afeltra A., Alessandri C., Allegri F., Bistoni O. *et al.*
330 Antiprothrombin antibodies: a comparative analysis of homemade and commercial methods.
331 A collaborative study by the Forum Interdisciplinare per la Ricerca nelle Malattie
332 Autoimmuni (FIRMA). *Clin Exp Rheumatol* 2007; 25: 268-74.
- 333 18. Nahum J., Morichau-Beauchant T., Daviaud F., Echegut P., Fichet J., Maillet J.M. *et al.*
334 Venous Thrombosis Among Critically Ill Patients With Coronavirus Disease 2019 (COVID-
335 19). *JAMA Network Open* 2020; 3: e2010478-e. doi:10.1001/jamanetworkopen.2020.10478
- 336 19. Zhang L., Feng X., Zhang D., Jiang C., Mei H., Wang J. *et al.* Deep Vein Thrombosis in
337 Hospitalized Patients with Coronavirus Disease 2019 (COVID-19) in Wuhan, China:
338 Prevalence, Risk Factors, and Outcome. *Circulation* 2020;
339 doi:10.1161/CIRCULATIONAHA.120.046702 [Epub ahead of print].
- 340 20. Klok F.A., Kruip M.J.H.A., van der Meer N.J.M., Arbous M.S., Gommers D.A.M.P.J., Kant
341 K.M. *et al.* Incidence of thrombotic complications in critically ill ICU patients with COVID-
342 19. *Thromb Res* 2020; 191: 145-7. doi:10.1016/j.thromres.2020.04.013
- 343 21. Lodigiani C., Iapichino G., Carenzo L., Cecconi M., Ferrazzi P., Sebastian T. *et al.* Venous
344 and arterial thromboembolic complications in COVID-19 patients admitted to an academic
345 hospital in Milan, Italy. *Thromb Res* 2020; 191: 9-14. doi:10.1016/j.thromres.2020.04.024
- 346 22. Middeldorp S., Coppens M., van Haaps T.F., Foppen M., Vlaar A.P., Müller M.C.A. *et al.*
347 Incidence of venous thromboembolism in hospitalized patients with COVID-19. *J Thromb*
348 *Haemost* 2020; 10.1111/jth.14888. doi:10.1111/jth.14888
- 349 23. Beyrouti R., Adams M.E., Benjamin L., Cohen H., Farmer S.F., Goh Y.Y. *et al.*
350 Characteristics of ischaemic stroke associated with COVID-19. *J Neurol Neurosurg*
351 *Psychiatry* 2020; jnnp-2020-323586. [Epub ahead of print]. doi:10.1136/jnnp-2020-323586
- 352 24. Andreoli L., Rizzini S., Allegri F., Meroni P., Tincani A. Are the Current Attempts at
353 Standardization of Antiphospholipid Antibodies Still Useful? Emerging Technologies Signal
354 a Shift in Direction. *Semin Thromb Hemost* 2008; 34: 356-60. doi:10.1055/s-0028-1085478
- 355 25. Lakos G., Bentow C., Mahler M. A Clinical Approach for Defining the Threshold between
356 Low and Medium Anti-Cardiolipin Antibody Levels for QUANTA Flash Assays. *Antibodies*
357 *(Basel, Switzerland)*. 2016; 5: 14. doi:10.3390/antib5020014
- 358 26. Radin M., Cecchi I., Roccatello D., Meroni P.L., Sciascia S. Prevalence and Thrombotic
359 Risk Assessment of Anti- β 2 Glycoprotein I Domain I Antibodies: A Systematic Review.
360 *Semin Thromb Hemost* 2018; 44: 466-74. doi:10.1055/s-0037-1603936
- 361 27. Andreoli L., Chighizola C.B., Nalli C., Gerosa M., Borghi M.O., Pregnolato F. *et al.* Clinical
362 characterization of antiphospholipid syndrome by detection of IgG antibodies against β 2 -
363 glycoprotein i domain 1 and domain 4/5: ratio of anti-domain 1 to anti-domain 4/5 as a
364 useful new biomarker for antiphospholipid syndrome. *Arthritis Rheumatol* 2015; 67: 2196-
365 204. doi:10.1002/art.39187
- 366 28. Cattini M.G., Bison E., Pontara E., Cheng C., Denas G., Pengo V. Tetra positive thrombotic
367 antiphospholipid syndrome: Major contribution of anti-phosphatidyl-serine/prothrombin
368 antibodies to lupus anticoagulant activity. *J Thromb Haemost* 2020; 18: 1124-32.
369 doi:10.1111/jth.14765
- 370 29. García-Carrasco M., Galarza-Maldonado C., Mendoza-Pinto C., Escarcega R.O., Cervera R.
371 Infections and the Antiphospholipid Syndrome. *Clin Rev Allergy Immunol* 2009; 36: 104-8.
372 doi:10.1007/s12016-008-8103-0

- 373 30. Cugno M., Meroni P.L., Gualtierotti R., Griffini S., Grovetti E., Torri A. *et al.* Complement
374 activation in patients with COVID-19: A novel therapeutic target. *J Allergy Clin Immunol*
375 2020; S0091-6749(20)30650-3. doi:10.1016/j.jaci.2020.05.006
- 376 31. Pregnolato F., Gerosa M., Raimondo M.G., Comerio C., Bartoli F., Lonati P.A. *et al.*
377 EUREKA algorithm predicts obstetric risk and response to treatment in women with
378 different subsets of anti-phospholipid antibodies. *Rheumatology (Oxford)* 2020; keaa203.
379 doi:10.1093/rheumatology/keaa203 [Epub ahead of print].
- 380 32. Ruben E.A., Planer W., Chinnaraj M., Chen Z., Zuo X., Pengo V. *et al.* The J-elongated
381 conformation of beta2-glycoprotein I predominates in solution: Implications for our
382 understanding of antiphospholipid syndrome. *J Biol Chem* 2020; jbc.RA120.013939.
383 doi:10.1074/jbc.RA120.013939

384
385
386
387
388
389

390
391
392
393
394
395
396
397
398
399
400
401
402
403
404
405
406
407
408
409
410
411
412
413
414
415
416
417
418
419
420
421
422

423

424

425

426 9. Figure legends

427

428 **Figure 1. Titers of aCL and a β_2 GPI antibodies detected by ELISA in COVID-19 patients** 429 **(black, n=122) and comparison with APS patients (green, n=86).**

430 Values are expressed as median levels [first and third quartile]. **Panel A:** aCL. From the left to the
431 right: COVID-19 IgG: 15 [8 - 15]; APS IgG: 65 [22 - 103]; COVID-19 IgM: 6.2 [2.6 - 10.8]; and
432 APS IgM: 4.0 [1 - 11]. **Panel B:** a β_2 GPI. From the left to the right: COVID-19 IgG: 0.06 [0.04 -
433 0.10]; APS IgG: 1.14 [0.52- 1.55]; COVID-19 IgM: 0.065 [0.02 - 0.142]; APS IgM: 0.23 [0.105 -
434 0.741]; and COVID-19 IgA: 0.04 [0.02 - 0.09]. Cutoff values are aCL IgG/IgM 20 phospholipid
435 units (GPL/MPL); a β_2 GPI IgG/IgM/ IgA ELISA 0.13, 0.27 and 0.16 optical units (OD),
436 respectively.

437

438 **Figure 2. Epitope specificity of anti- β_2 GPI antibodies in COVID-19 patients. Panel A.**

439 Three-dimensional structure of β_2 GPI solved at 2.4 Å by X-ray crystallography (PDI ID: 6V06
440 [32]) displaying the positioning of the fragments used in this study. The N-terminal D1 is shown in
441 red. The C-terminal D4-5 fragment is shown in blue. N-linked glycosylations are shown as magenta
442 stick. Titers of anti-D1 (**panel B**) and anti-D4-5 antibodies (**panel C**) in 58 COVID-19 patients
443 detected by chemiluminescence and ELISA, respectively. Values are expressed as median levels
444 [first and third quartile]. Anti-D1 (aD1): 3.6 [3.6 - 4.7]. Anti-D4-D5 (aD4-D5): 0.10 [0.068 -
445 0.199]. Cutoff values are >20 chemiluminescent units (CU) and >0.405 optical units (OD) for aD1
446 and aD4-D5, respectively.

447

448 **Figure 3. Titers of aPS/PT antibodies detected by ELISA in COVID-19 patients.**

449 Values are expressed as median levels [first and third quartile]. aPS/PT IgG:13.6 [8 to 15.2];
450 aPS/PT IgM:11.4 [8 to 16.5] IgM. Cut-off of the assays was 30 units/ml.

Table 1. Coagulation and inflammation parameters expressed as median with minimum and maximum in severe or critical COVID-19 patients.

	D-dimer μg/L	CRP mg/dl	Ferritin μg/L	IL-6 ng/L	White cells n/μl	Neutrophils n/μl	Platelets n x 10 ³ /μl	PT ratio	aPTT sec	Fibrinogen mg/dl
COVID-19	984.47	126.99	1024	25.1	8000	6600	350	1.196	30.13	521
	200-40234	0.1-470.3	55-9002	3-496	2500-12900	1560-12510	60-800	0.9-6.9	21-75.4	202-840
Normal range	< 500	0.00-0.05	30-400	< 10	4300-10500	1800-8100	140-450	≤ 1.2	< 30 sec	200-400

Table 2. Prevalence of COVID-19 patients positive for aPL

	ELISA		CIA	
	aCL	a β_2 GPI	aCL CIA	a β_2 GPI CIA
IgG	5.7 (7)*	15.6 (19)	9.8 (12)	5.0 (6)
IgM	6.6 (8)	9.0 (11)	6.6 (8)	5.0 (6)
IgA	nd	6.6 (8)	2.5 (3)	0.8 (1)

*Values are expressed as percentage (n) of positive patients. aCL: anti-cardiolipin antibodies;

a β_2 GPI: anti- β_2 glycoprotein I antibodies; ELISA: enzyme linked immunosorbent assay; CIA:

chemiluminescence immunoassay; nd: not done.

Figure 1

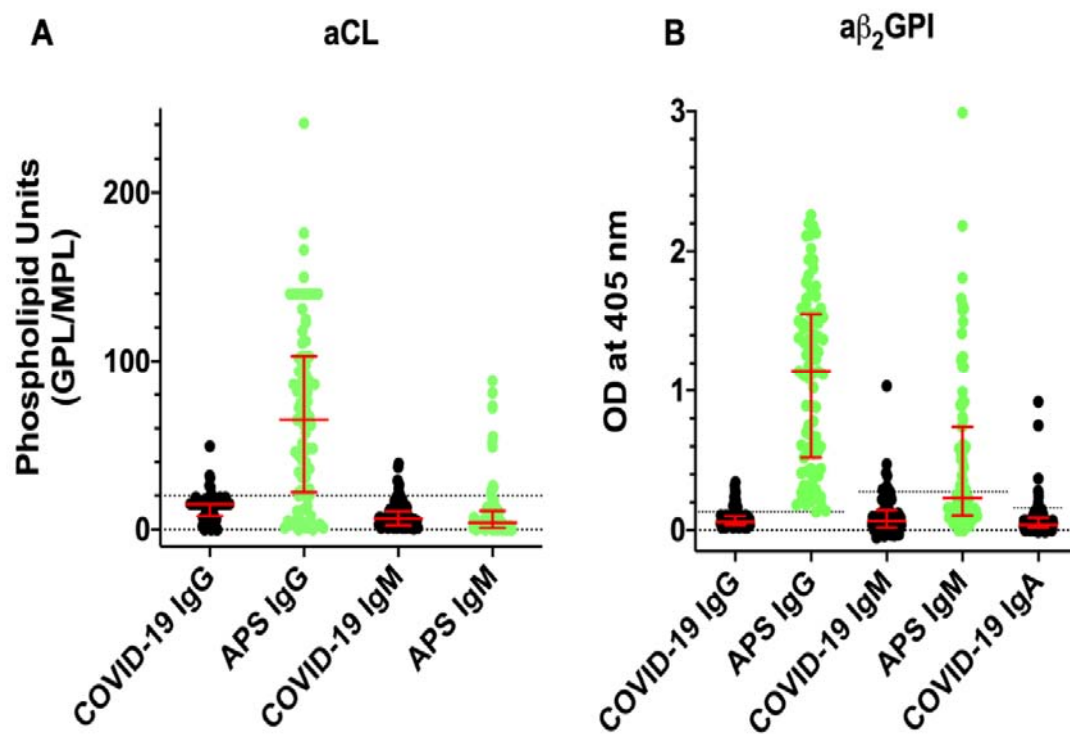


Figure 2

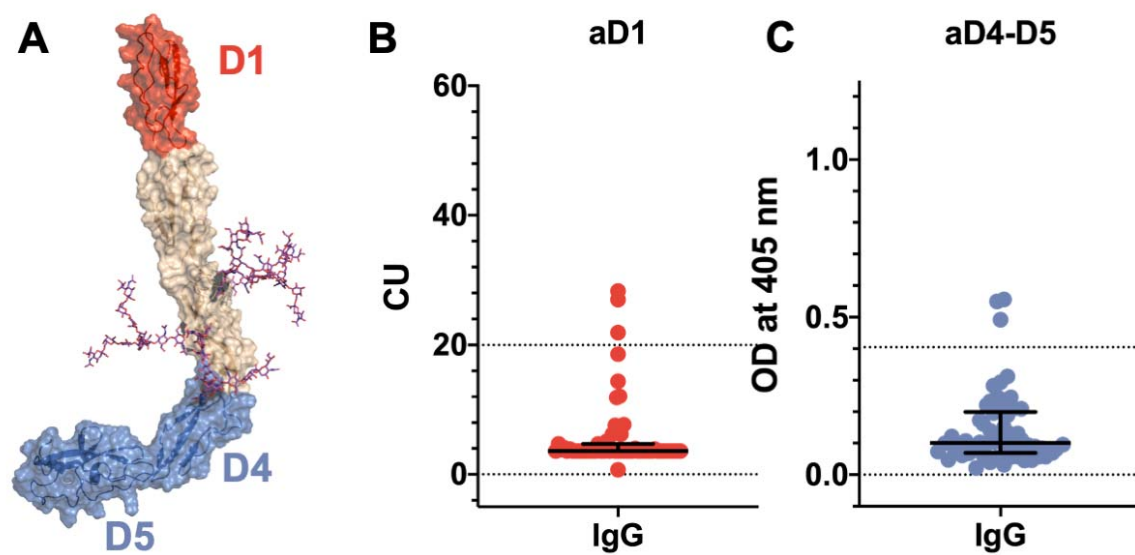
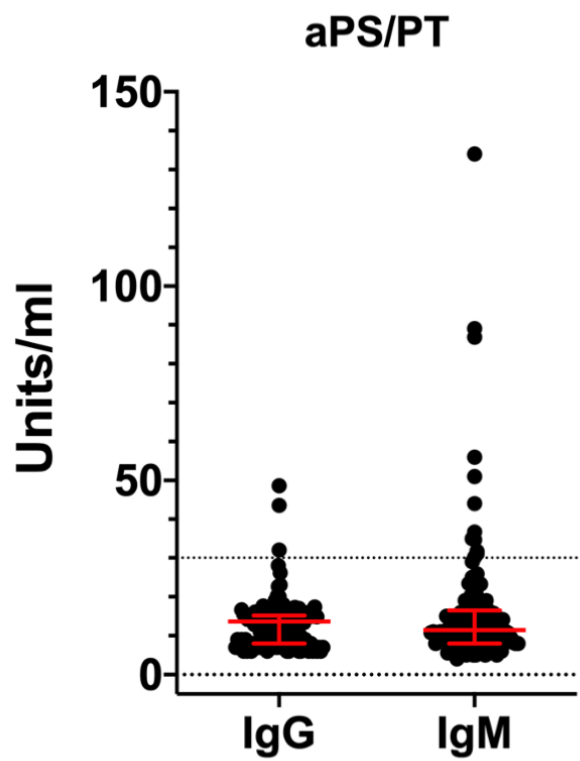
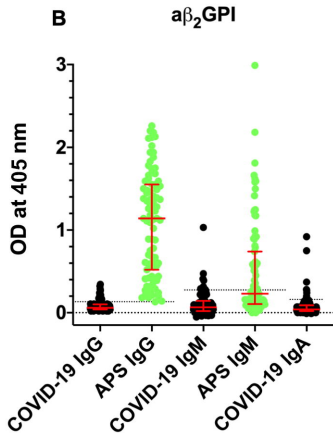
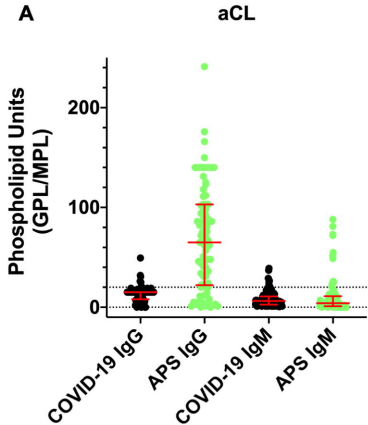
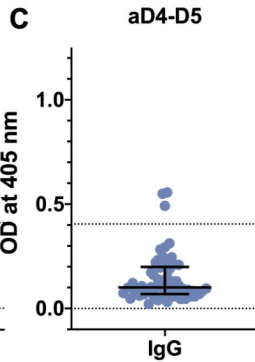
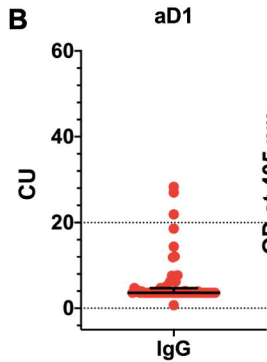
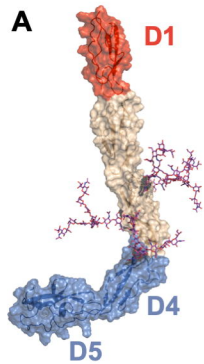


Figure 3







aPS/PT

