

Original article

## **Neutrophil nuclear patterns to distinguish between pathological and non-pathological autoantibodies detected on HEp-2 cells**

Running Title: Neutrophils vs. HEp-2 cells for pathological autoantibodies

Dong Il Won<sup>1\*</sup>, Jihea Park<sup>2</sup>, Beom Soo Kim<sup>2</sup>, Chae Eun Kim<sup>2</sup>, Heon Sik Yoon<sup>2</sup>, Ji Soo Jung<sup>2</sup>

<sup>1</sup>Department of Clinical Pathology, School of Medicine, Kyungpook National University, Daegu, Republic of Korea

<sup>2</sup>Department of Medicine, School of Medicine, Kyungpook National University, Daegu, Republic of Korea

\*Corresponding author: Dong Il Won, MD, PhD

ORCID: [orcid.org/0000-0002-1983-2515](https://orcid.org/0000-0002-1983-2515)

Department of Laboratory Medicine,  
Kyungpook National University Hospital  
130, Dongdeok-ro, Jung-gu, Daegu  
41944, Republic of Korea

Tel: +82-53-200-5291

Fax: +82-53-426-3367

E-mail: [wondi@knu.ac.kr](mailto:wondi@knu.ac.kr)

### **Conflicts of Interest**

The authors state that there are no conflicts of interest in this study.

## **Neutrophil nuclear patterns to distinguish between pathological and non-pathological autoantibodies detected on HEp-2 cells**

**Running Title:** Neutrophils vs. HEp-2 cells for pathological autoantibodies

### **Abstract**

**Background:** Antinuclear antibody (ANA) testing is used to diagnose systemic autoimmune rheumatic disease (SARD). Autoantibodies (Abs) associated with the “homogeneous-like” pattern on ANA HEp-2 cell nuclei can be classified as pathological (e.g., anti-dsDNA, anti-nucleosome, anti-histone, anti-Scl-70 Abs) or non-pathological (e.g., anti-DFS70 Abs).

**Methods:** Anti-neutrophil cytoplasmic anti-antibody (ANCA) testing was used to classify individuals who presented with a homogeneous-like pattern on ANA testing. Enrolled subjects included (1) young individuals with a dense fine speckled pattern on ANA testing (young non-SARD group, n = 58) and patients with (2) systemic lupus erythematosus (SLE) with anti-dsDNA Abs (SLE group, n = 33), (3) rheumatoid arthritis (RA) with anti-nucleosome, anti-histone Abs, and others (RA group, n = 42), and (4) diffuse systemic sclerosis (SSc) with Scl-70 Abs (diffuse SSc group, n = 11).

**Results:** Negative rates (95% confidence interval) of neutrophil nuclear patterns on ANCA testing were: 96.6% (88.1%–99.6%) of the young non-SARD group, 3.0% (0.1%–15.8%) of the SLE group, 4.8% (0.6%–16.2%) of the RA group, and 54.5% (23.4%–83.3%) of the diffuse SSc group. The negative rate of the non-SARD group was significantly higher than those of the SARD group (all  $P < 0.05$ ).

**Conclusions:** ANCA testing helps to identify individuals with non-pathological anti-DFS70 Abs who present with homogeneous-like patterns in HEp-2 cell nuclei on ANA testing.

**Key Words:** antinuclear antibody, anti-neutrophil cytoplasmic antibody, homogeneous pattern, anti-DFS70 antibody

## Introduction

Anti-nuclear antibody (ANA) testing is currently used to diagnose systemic autoimmune rheumatoid disease (SARD).<sup>1</sup> This testing method is an indirect immunofluorescence (IIF) assay to assess binding of serum antibodies (Abs) to human HEp-2 cells that originated from human laryngeal epithelial carcinoma. The nature of the target antigen detected by SARD-associated autoantibodies differs among various diseases; as such, unique reaction patterns are revealed on ANA testing. When performing ANA testing, the fluorescence intensity (FI), reaction pattern, and Ab titer in the patient serum needs to be accurately determined, as these findings are critical in order to discriminate between ANA-positive healthy individuals and patients with SARD.<sup>2-4</sup>

Anti-neutrophil cytoplasmic anti-antibody (ANCA) testing is used to diagnose systemic necrotizing vasculitis. The target antigens of associated Abs are components of the cytoplasmic granules of neutrophils, including proteinase-3 (PR3), myeloperoxidase (MPO), elastase, lactoferrin, lysozyme, and cathepsin G, among others. ANCA testing with the IIF assay uses fixed neutrophils attached to the surface of glass slides as targets for Ab binding.<sup>5</sup>

Cells from the HEp-2 line are theoretically capable of infinite cell division. By contrast, circulating neutrophils are produced in and released from bone marrow; these cells do not proliferate and typically undergo apoptosis within one day. As such, there are considerable differences with respect to intracellular components when comparing these two target cells. As such, a comparison of the reaction patterns (HEp-2 cells for ANA testing and neutrophils for ANCA testing) may provide useful clues toward identifying the target antigens of specific Abs (Fig. 1).

Autoantibodies showing “homogeneous-like” patterns in HEp-2 cell nuclei on ANA testing may be classified into pathological Abs (for example, anti-dsDNA, anti-nucleosome, anti-histone, anti-Scl-70 Abs, among others) and non-pathological Abs, most notably anti-DFS70. In this study, we identified a series of patients with a homogeneous-like pattern in HEp-2 cell nuclei on ANA testing. Then, we explored the characteristic neutrophil nuclear patterns on ANCA testing in order to identify clues to help to distinguish between pathological and non-pathological autoantibodies.

## Materials and Methods

ANA or ANCA testing requested by the Departments of Rheumatology or Pediatrics at Kyungpook National University Hospital (Daegu, Korea) was conducted by the Department of Laboratory Medicine. Tests were carried out using the automated IIF assay using serum samples obtained from the patients.

Reaction patterns in neutrophil nuclei on ANCA testing were evaluated retrospectively in cases in which patient sera generated a homogeneous-like pattern in HEp-2 cell nuclei on ANA testing. A total of 10,758 ANA tests (8,728 patients) and 5,822 ANCA tests (5,356 patients) were included in this study from January 1, 2018 to February 29, 2020. The study protocol was determined to be exempt by the Institutional Review Board of our hospital (IRB file No.: KNUH 2020-01-051).

### Enrolled subjects

ANA patterns were determined according to the criteria of the International Consensus on ANA Patterns (ICAP).<sup>6</sup> We selected patients with homogeneous-like patterns (ICAP codes: AC-1, AC-2, and AC-29) in HEp-2 cell nuclei on ANA testing in whom ANCA testing was also performed. Participants were classified into the following four groups according to the diagnoses that were confirmed by their respective physicians: (1) individuals under 40 years of age who were not diagnosed with SARD (young non-SARD group), (2) patients diagnosed with systemic lupus erythematosus (SLE) (SLE group), (3) patients with rheumatoid arthritis (RA) (RA group), and (4) patients with diffuse systemic sclerosis (SSc) (diffuse SSc group). The selection criteria for each group are summarized in Table 1. In particular, the RA group was selected to include those with Abs that targeted nucleosomes, histones, or single-stranded DNA (ssDNA) as opposed to double-stranded DNA (dsDNA).

The young non-SARD group included two subgroups, including those whose sera revealed (1) a dense fine speckled (DFS) pattern (ICAP code AC-2) alone or (2) DFS pattern associated with few nuclear dots (AC-7) on ANA testing. Among these samples, fluorescence intensity (FI) values determined by automated IIF (see below) were usually measured at levels less than 1500 light intensity units (LIU). As such, an upper limit (1500 LIU) on the FI value was applied when selecting among the patients with SLE or RA, so that the FI values of these groups might not differ significantly from the young non-SARD group. When selecting cases from those with diffuse SSc, a patient was included only if speckled nucleoli and several dots on mitotic cell chromosomes (AC-10) were detected together with the homogeneous patterns on HEp-2 cell nuclei (AC-29).

The characteristics of the participants selected and assigned to each category are presented in Table 2. As intended, FI values in ANA testing of the SLE or RA groups showed no significant difference compared to those of the non-SARD group (unpaired *t*-test).

### Automated IIF testing

ANA or ANCA slide processing, from specimen dilution to the final wash steps, was completely performed using a QUANTA-Lyser instrument. Digital images of stained HEp-2 cells or neutrophils were acquired using the NOVA View instrument with software version 2.0. Two independent experts reviewed these images on liquid crystal display (LCD) monitors using the QUANTA Link (all from INOVA Diagnostics, San Diego, CA, USA).<sup>7,8</sup>

NOVA Lite HEp-2 IgG ANA with DAPI kits were used for ANA screening with sera diluted at 1:80. NOVA Lite ANCA (ethanol fixed) kits were used for ANCA screening with sera diluted at 1:20 (all from INOVA). The cutoff values used to discriminate between a positive and negative FI value were 48 LIU for ANA testing and 20 LIU for ANCA testing.

Among those samples identified as homogeneous-like patterns in HEp-2 cell nuclei on ANA testing, we evaluated cases in which ANCA testing had been conducted simultaneously. To distinguish pathological Abs from non-pathological Abs based on ANCA neutrophil nuclear patterns, solid nuclear, or intranuclear patterns on ANAC testing were regarded as positive. In addition, very perinuclear (atypical P-ANCA) patterns accompanied by these nuclear patterns were also regarded as positive.

### **Statistical analysis**

Statistical analyses were performed using SPSS version 23.0 (IBM corp., Armonk, NY, USA). An unpaired *t*-test was used to compare FI values between two groups. For rates of negative neutrophil nuclear patterns in ANCA testing, 95% confidence intervals (CIs) were obtained, and groups were compared with Fisher's exact test. *P*-values < 0.05 were considered significant. Data are expressed as mean ± standard deviation or range (minimum–maximum).

## Results

We explored the relationship between homogeneous-like patterns in HEp-2 cell nuclei on ANA testing and neutrophil nuclear patterns on ANCA testing in four distinct participant groups.

### Fluorescence microscope digital images of both ANA and ANCA testing

Representative fluorescent microscopic images of results from ANA and ANCA testing for each group are presented in Fig. 2.

### Changes in FI (ANA vs. ANCA) in a patient serum sample in each group

Among those in whom ANA testing revealed homogeneous-like patterns on HEp-2 cell nuclei, changes in FI were evaluated (ANA testing vs. ANCA testing, Fig. 3).

### 3. Qualitative assessment of FI values or reaction patterns in neutrophil nuclei on ANCA testing.

Among those who presented with homogeneous-like patterns in HEp-2 cell nuclei on ANA testing, statistical analysis of the FI values and qualitative visual determination of neutrophil nuclear patterns on ANCA testing are shown in Table 3.

Negative rates of ANCA neutrophil nuclear patterns were: 96.6% (CI: 88.1%–99.6%) of the young non-SARD group, 3.0% (CI: 0.1%–15.8%) of the SLE group, 4.8% (CI: 0.6%–16.2%) of the RA group, and 54.5% (CI: 23.4%–83.3%) of the diffuse SSc group.

Regarding positive to negative qualitative determinations, the difference between two disease groups in all three pairs was significant ( $P < 0.05$ , Fisher's exact test) using the non-SARD group as the reference. A comparison of FI values in ANCA testing of all three pairs was also significant ( $P < 0.05$ , unpaired  $t$ -test).

In this study, eight ANCA tests that revealed very perinuclear patterns were excluded from the negative cases of neutrophil nuclear reactions, because all those cases were accompanied by solid nuclear or intranuclear patterns (see Fig. 2, RA patient). In two cases associated with the non-SARD group, FI values in ANCA testing exceeded the cutoff value 20 LIU (i.e., 31.0 and 63.0 LIU, respectively), although the ANCA neutrophil nuclear patterns were visually negative. Both cases showed an increase in FI values due to non-specific staining of intercellular background areas (i.e., false positive FI values). Two of the cases assigned to the SLE group also had no positive neutrophil nuclear patterns. In both cases, serum dsDNA Ab levels were also negative (4.07 and 1.25 IU/mL, reference value  $< 7.0$  IU/mL).

## Discussion

Pediatricians often request ANA testing to rule out SARD in an otherwise healthy child with minor skin lesions or microscopic hematuria of unknown origin. A laboratory report that misreads a DFS pattern as a homogeneous pattern can evoke unnecessary and unwarranted anxiety. At this time, the physician can only regard this result as clinically unimportant after confirming negativity on secondary tests, ANA panel testing for extractable nuclear antigens (ENA; Sm, RNP, SSA/Ro, SSB/La, Scl-70, Jo-1, CENP-B, among others). This study revealed that neutrophil nuclear patterns on ANCA testing can accurately distinguish anti-DFS70 Ab from anti-dsDNA Ab, anti-nucleosome Ab, or anti-histone Ab in SARD patients who initially present with ANA test results that include a homogenous-like pattern on HEp-2 cell nuclei.

The diseases that are associated with the aforementioned homogeneous-like ANA patterns include (1) SLE, which tests positive for anti-dsDNA Ab, (2) anti-nucleosome Ab-positive SLE, RA, and autoimmune hepatitis (AIH), and (3) anti-Scl-70 Ab-positive diffuse SSc. Anti-dsDNA Abs are unique to SLE and are detected in 75–90% of patients with active disease. Anti-nucleosome Abs are detected in 75% of all SLE patients, in 100% of those diagnosed with drug-induced lupus, and in 20%–50% of patients with AIH type I.<sup>6</sup> In a study that explored target specificity of autoantibodies in 59 ANA-positive RA patient sera, anti-histone Abs were detected most often (14/59, 23.7%) followed by Abs targeting ssDNA (4/59), SS-A (4/59), and dsDNA (2/59).<sup>9</sup> RA patients treated with anti-TNF $\alpha$  (infliximab) may gradually develop anti-dsDNA and anti-nucleosome Abs for a period of 30 weeks.<sup>10</sup>

Anti-Scl-70 Ab targets Scl-70 (DNA topoisomerase I), is detected in serum samples from patients diagnosed with diffuse SSc, and generates a homogeneous pattern in HEp-2 cell nuclei on ANA testing (AC-29); this pattern is indistinguishable from that generated by anti-dsDNA Abs.<sup>11, 12</sup> The presence of speckled nucleoli and several dots on the positive mitotic cell chromosomes (AC-10) helps to distinguish between these two Abs. This unique pattern is related to Ab targeting of RNA polymerase I and/or nucleolar organizing regions (NOR)-90 (hUBF).<sup>13</sup>

The anti-DFS70 Ab generates the DFS pattern (AC-2) in both nuclei and mitotic cell chromosomes of HEp-2 cells. The target antigen of this autoantibody is dense fine speckles 70 (DFS70), a protein also known as the DNA binding transcription coactivator p75.<sup>14, 15</sup> In healthy children, this reaction pattern is often accompanied by 1 to 6 nuclear dots (anti-p80-coilin Ab, AC-7).<sup>16</sup> Of the 58 young (< 40 years old) non-SARD patients who generated a DFS pattern, 13 samples also generated this pattern (few nuclear dots). This DFS pattern on HEp-2 cell nuclei can be problematic because it can be difficult to distinguish from the homogeneous pattern. In our study, this DFS pattern (AC-2) was often mistaken for a mixed pattern of the homogeneous and fine speckled pattern on HEp-2 cell nuclei due to the accompanying positive mitotic cell karyoplasm (AC-1 and AC-4)

As such, the distinctions between pathological and non-pathological autoantibodies based on

reaction patterns on HEp-2 cell nuclei are often not straightforward. As shown here, ANCA testing can be used as a means to distinguish between these Abs. As shown, the ANCA neutrophil nuclear pattern is routinely negative in the cases of non-pathologic anti-DFS70 Ab and positive for pathological Abs targeting dsDNA, nucleosomes, and histones.

It should be noted that the anti-Scl-70 Ab identified in serum samples from diffuse SSc patients (AC-29) may show positive patterns in neutrophil nuclei on ANCA testing. Fortunately, the ANA pattern includes both speckled nucleoli as well as several dots on mitotic cell chromosomes (NOR-90 Ab or RNA polymerase I Ab, AC-10); as such, it is possible to distinguish antibodies targeting Scl-70 from those targeting dsDNA and DFS70 based on ANA testing alone. Solid or intranuclear staining of neutrophil nuclei on ANCA testing was detected in 5 of the 11 cases included in the diffuse SSc group; this may be due to the actions of incidental anti-nucleosome, anti-histone, or anti-ssDNA Abs, among others, as opposed to those of anti-Scl-70 Ab.

According to a recent study of Carbone *et al*<sup>17</sup>, in which 14 tests for disease-marker autoantibodies were performed in a total of DFS70 Ab-positive 55 adults, all men (10/55) tested negative. Among the women (45/55), about half the study subjects (23/45) tested positive: anti-thyroid peroxidase Ab was the most common of the Abs detected (7/23), one subject tested positive for Ab against Mi-2, a member of the ENA family, and three subjects were also ANCA-positive, with antibodies targeting MPO, PR3, or both. Concerning clinical features of DFS70 Ab-positive subjects, the majority of subjects (37/55) were healthy, while the remaining subjects (18/55) were diagnosed with various diseases including four subjects with celiac disease. This Carbone's study suggests a DFS pattern in adults should trigger a follow-up investigation for autoimmune diseases, especially among women. Nevertheless, we believe that the anti-DFS70 Ab detected in adults is more or an epiphenomenon associated with immune system dysregulation and that this antibody per se may not play a pathogenic role.

All five antigens associated with homogeneous-like patterns on HEp-2 cell nuclei such as dsDNA, nucleosome, histone, DNA binding transmission cofactor p75 (DFS70), and DNA topoisomerase I (Scl-70) appear to be enriched in HEp-2 cell nuclei. However, the DFS70 and Scl-70 antigens are not as prominent in neutrophil nuclei; this is the basis of the strategy used to distinguish pathological from non-pathological Abs. An alternative approach is to perform anti-DFS70 Ab testing with a commercial kit (INOVA) or to verify the results with ANA panel testing; this approach is not economically feasible. As such, an evaluation of ANCA neutrophil nuclear patterns may be an important strategy that can be used to detect (or to exclude the possibility of) pathological autoantibodies as shown in our study. Our results do not imply that ANCA testing always needs to be performed in parallel with ANA testing,

In RA, the very perinuclear (atypical P-ANCA) patterns frequently observed on ANCA testing are related to the prevalence of antibodies against lactoferrin, among other targets.<sup>18</sup> In our study, very perinuclear patterns were observed in 7 out of 42 patients diagnosed with RA.

There are some limitations to our study. First, we did not always confirm the autoantibody



specificities by a solid phase assay to determine whether those were consistent with the intended for each disease group; this is especially the case for anti-nucleosome Ab or anti-histone Ab. However, anti-dsDNA and anti-Scl-70 Ab were always confirmed as part of the routine diagnostic workup. Fortunately, this limitation seems to have been overcome to some extent with close observation and evaluation of the reaction patterns in HEp-2 cell nuclei on ANA testing. Second, patients diagnosed with AIH were not included in this study due to their limited numbers; we recognize that homogeneous-like patterns on ANA HEp-2 cell nuclei can be detected in association with AIH due to the actions of anti-nucleosome Abs.<sup>19</sup> Third, the manufacturer of ANA or ANCA slides used in our study was limited to a single company (INOVA). The specific nature of the fixative solution and process used to pretreat HEp-2 cells and neutrophils may result in denaturation or elimination of relevant cellular antigens. As such, further studies are needed in order to determine whether the results of our study can be reproduced using slides from other manufacturers. Finally, additional studies focused on determining whether DFS70 and Scl-70 antigens can be detected in neutrophil nuclear extracts by immunoblotting would provide important support for this study.

In conclusion, identification of homogeneous-like patterns in HEp-2 cell nuclei on ANA testing might be followed-up with ANCA testing to evaluate neutrophil nuclear patterns; this will help to determine whether the ANA pattern is attributed to the presence of non-pathological anti-DFS70 Abs.

## REFERENCES

1. Briolay J, Gioud M, Monier JC, et al. Antinuclear antibodies detected by indirect immunofluorescence on HEp2 cells and by immunoblotting in patients with systemic sclerosis. *Autoimmunity*. 1989;2(2):165-176.
2. Mariz HA, Sato EI, Barbosa SH, Rodrigues SH, Dellavance A, Andrade LE. Pattern on the antinuclear antibody-HEp-2 test is a critical parameter for discriminating antinuclear antibody-positive healthy individuals and patients with autoimmune rheumatic diseases. *Arthritis Rheum*. Jan 2011;63(1):191-200.
3. Soto ME, Hernandez-Becerril N, Perez-Chiney AC, et al. Predictive value of antinuclear antibodies in autoimmune diseases classified by clinical criteria: Analytical study in a specialized health institute, one year follow-up. *Results Immunol*. 2015;5:13-22.
4. Solomon DH, Kavanaugh AJ, Schur PH, Comm ACRAH. Evidence-based guidelines for the use of immunologic tests: Antinuclear antibody testing. *Arthritis & Rheumatism-Arthritis Care & Research*. Aug 15 2002;47(4):434-444.
5. Savige J, Dimech W, Fritzler M, et al. Addendum to the International Consensus Statement on testing and reporting of antineutrophil cytoplasmic antibodies. Quality control guidelines, comments, and recommendations for testing in other autoimmune diseases. *Am J Clin Pathol*. Sep 2003;120(3):312-318.
6. von Mühlen CA, Fritzler MJ, Chan EKL. Clinical and laboratory evaluation of systemic rheumatic diseases. In: McPherson RA, Pincus MR, eds. *Henry's clinical diagnosis and management by laboratory methods*. 23 ed. St. Louis: Elsevier; 2016:993-1015.
7. Bizzaro N, Antico A, Platzgummer S, et al. Automated antinuclear immunofluorescence antibody screening: a comparative study of six computer-aided diagnostic systems. *Autoimmun Rev*. Mar 2014;13(3):292-298.
8. Ricchiuti V, Adams J, Hardy DJ, Katayev A, Fleming JK. Automated Processing and Evaluation of Anti-Nuclear Antibody Indirect Immunofluorescence Testing. *Front Immunol*. 2018;9:927.
9. Aitchison CT, Peebles C, Joslin F, Tan EM. Characteristics of antinuclear antibodies in rheumatoid arthritis. Reactivity of rheumatoid factor with a histone-dependent nuclear antigen. *Arthritis Rheum*. May 1980;23(5):528-538.
10. Eriksson C, Engstrand S, Sundqvist KG, Rantapaa-Dahlqvist S. Autoantibody formation in patients with rheumatoid arthritis treated with anti-TNF alpha. *Ann Rheum Dis*. Mar 2005;64(3):403-407.
11. Spencer-Green G, Alter D, Welch HG. Test performance in systemic sclerosis: anti-centromere and anti-Scl-70 antibodies. *Am J Med*. Sep 1997;103(3):242-248.
12. Steen VD. Autoantibodies in systemic sclerosis. *Semin Arthritis Rheum*. Aug 2005;35(1):35-42.
13. Saigusa R, Asano Y, Nakamura K, et al. Association of anti-RNA polymerase III antibody and malignancy in Japanese patients with systemic sclerosis. *J Dermatol*. May 2015;42(5):524-527.
14. Carter JB, Carter S, Saschenbrecker S, Goeckeritz BE. Recognition and Relevance of Anti-DFS70 Autoantibodies in Routine Antinuclear Autoantibodies Testing at a Community Hospital. *Front Med (Lausanne)*. 2018;5:88.
15. Mahler M, Hanly JG, Fritzler MJ. Importance of the dense fine speckled pattern on HEp-2 cells and anti-DFS70 antibodies for the diagnosis of systemic autoimmune diseases. *Autoimmun Rev*. Jul 2012;11(9):642-645.
16. Goto N, Sugiura K, Ogawa Y, et al. Anti-p80 coilin autoantibodies react with a conserved epitope and are associated with anti-DFS70/LEDGF autoantibodies. *J Autoimmun*. Feb 2006;26(1):42-51.
17. Carbone T, Pafundi V, Tramontano G, et al. Prevalence and serological profile of anti-DFS70 positive subjects from a routine ANA cohort. *Sci Rep*. Feb 18 2019;9(1):2177.
18. Perel SB, Prain KM, Wilson RJ, Hogan PG, Gillis D, Wong RC. Diagnostic value of distinguishing and reporting different perinuclear ANCA (P-ANCA) immunofluorescence patterns: a prospective study. *Am J Clin Pathol*. Aug 2013;140(2):184-192.
19. Sebode M, Weiler-Normann C, Liwinski T, Schramm C. Autoantibodies in Autoimmune Liver Disease-Clinical and Diagnostic Relevance. *Front Immunol*. 2018;9:609.

## Tables

Table 1. Enrollment criteria and assignment to individual disease groups

Disease group	Age, years	ANA testing		FI value, LIU	ICAP code	Intended target of autoantibody
		HEp-2 cell nuclear pattern				
		Resting nucleus	cell Mitotic chromosome			
Young non-SARD	Less than 40	Dense fine speckled (+ few dots)	Dense fine speckled	No limit	AC-2 (+ AC-7)	DFS70 (+ p80-coilin)
SLE	No limit	Homogeneous	Homogeneous	Less than 1,500	AC-1	dsDNA
RA	No limit	Homogeneous	Homogeneous	Less than 1,500	AC-1	Nucleosome, histone, ssDNA, etc.
Diffuse SSc	No limit	Homogeneous (+ speckled Nucleolus)	Homogeneous & several dots	No limit	AC-29 & AC-10	ScI-70 (+ RNA polymerase I)

Abbreviations: SARD, systemic autoimmune rheumatic disease; SLE, systemic lupus erythematosus; RA, rheumatoid arthritis; SSc, systemic sclerosis; ANA, antinuclear antibody; FI, fluorescence intensity; LIU, light intensity unit; ICAP, International Consensus on ANA Patterns.

Table 2. Demographics of enrolled subjects according to each disease group

Disease Group	n	Sex (M:F)	Age, years (range)	FI in ANA testing	
				value	P-value*
Young non-SARD	58	21:37	17.9 (2–38)	467.1 ± 342.8	
SLE	33	1:32	37.3 (13–72)	590.1 ± 468.0	0.154
RA	42	10:32	59.5 (24–83)	484.8 ± 508.8	0.835
Diffuse SSc	11	2:9	53.9 (34–69)	1,573.5 ± 732.6	3.24E-11

\*FI values of non-SARD group were compared with those of the other disease groups (unpaired *t*-test). Abbreviations: SARD, systemic autoimmune rheumatic disease; SLE, systemic lupus erythematosus; RA, rheumatoid arthritis; SSc, systemic sclerosis; ANA, antinuclear antibody; FI, fluorescence intensity.

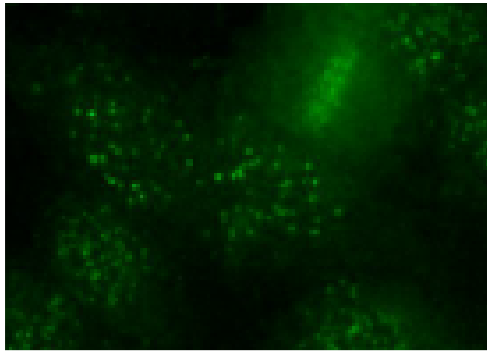
Table 3. Qualitative and quantitative results of ANCA testing according to each disease group with the homogeneous-like patterns in HEp-2 cell nuclei on ANA testing.

	n	No. of positive neutrophil nuclear reaction			FE test* P-value	FI in ANCA testing	
		Positive		Negative (%)		Value	<i>t</i> -test* P-value
		Solid intranuclear	or Very perinuclear				
Young non-SARD	58	2	0	56 (96.6)	6.3 ± 11.2		
SLE	33	31	1	1 (3.0)	1.25E-20	622.0 ± 952.5 3.60E-06	
RA	42	33	7	2 (4.8)	5.05E-23	470.6 ± 492.1 1.30E-10	
Diffuse SSc	11	5	0	6 (54.5)	7.33E-4	87.6 ± 130.7 9.46E-06	

\*FI values of non-SARD group were compared with those of the other disease groups (unpaired *t*-test). Abbreviations: SARD, systemic autoimmune rheumatic disease; SLE, systemic lupus erythematosus; RA, rheumatoid arthritis; SSc, systemic sclerosis; ANA, antinuclear antibody; ANCA, anti-neutrophil cytoplasmic antibody; FI, fluorescence intensity; FE test, Fisher's exact test.

## Figures

(A) HEp-2 cells in ANA testing



(B) Neutrophils in ANCA testing

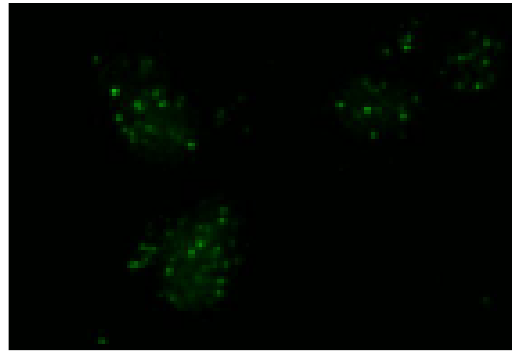


Fig. 1. (A) ANA and (B) ANCA testing of serum from a patient with systemic sclerosis (limited). In this case, neutrophil nuclei share the same reaction pattern (discretely speckled) as do HEp-2 cell nuclei. The targets of autoantibodies associated with this disease are centromeres which are present in both substrate cells (anti-IgG-FITC staining,  $\times 200$ ). Abbreviations: ANA, antinuclear antibody; ANCA, anti-neutrophil cytoplasmic antibody.

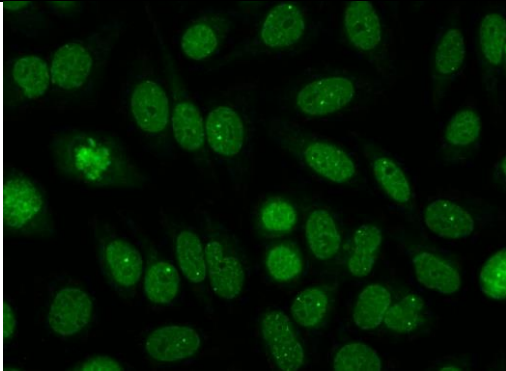
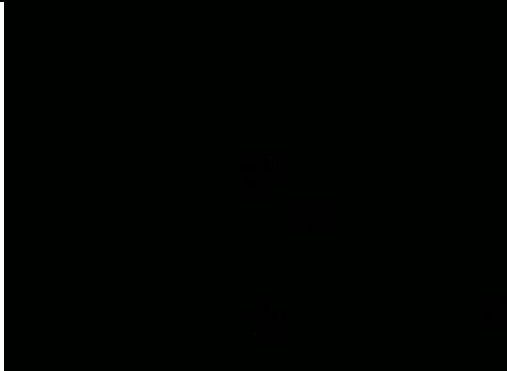
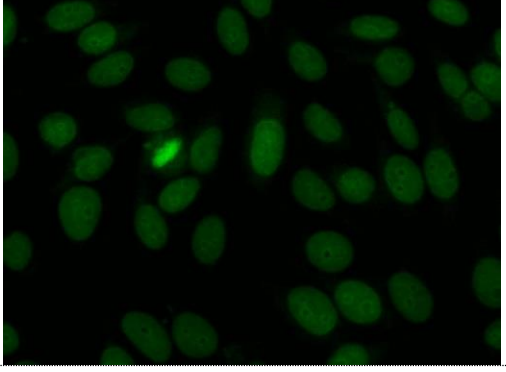
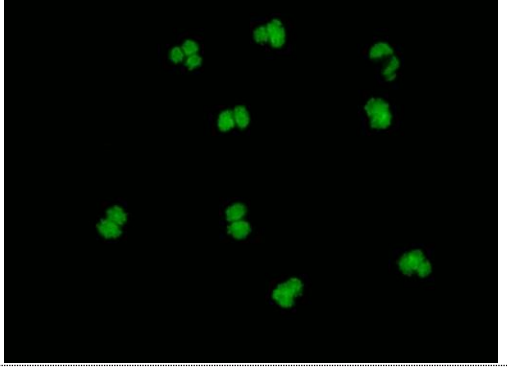
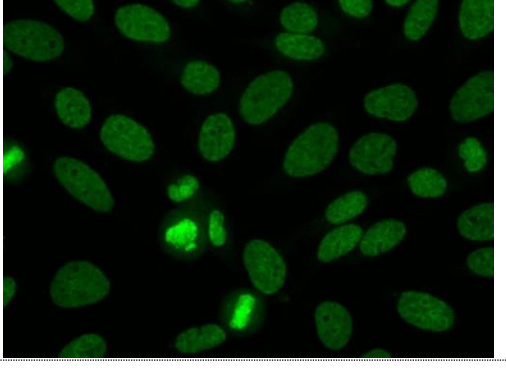
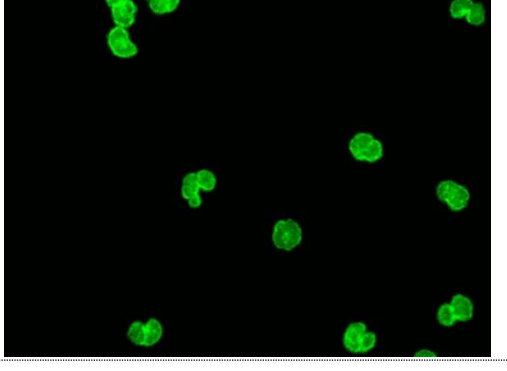
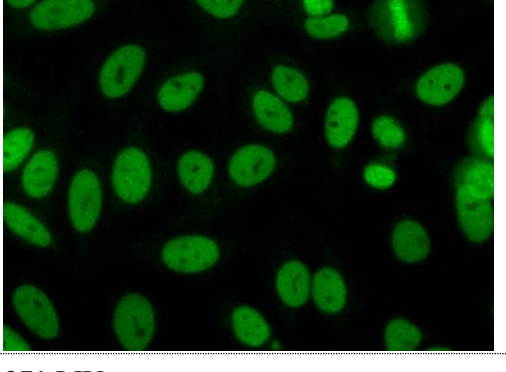
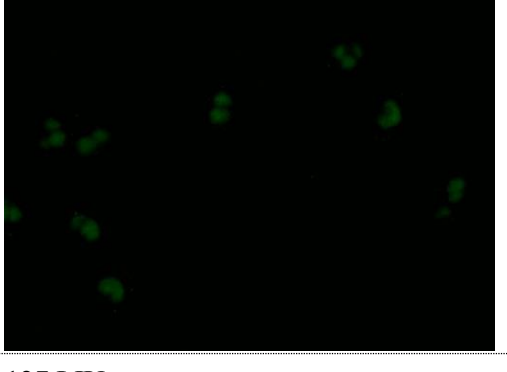
	ANA (FI cutoff 48 LIU)	ANCA (FI cutoff 20 LIU)
Young non-SARD F/10		
FI	1130 LIU	2 LIU
SLE F/36		
FI	458 LIU	322 LIU
RA F/26		
FI	667 LIU	822 LIU
Diffuse SSc F/52		
FI	971 LIU	127 LIU

Fig. 2. ANA and ANCA staining using serum samples that revealed a homogeneous-like pattern on ANA HEp-2 cell nuclei. A representative case for each study group is presented. On the left, serum from a young individual who was not diagnosed with SARD (non-SARD) shows a dense fine speckled pattern (AC-2) as well as a pattern of few nuclear dots (AC-7). Serum from a patient with diffuse SSc reveals both a homogeneous pattern (AC-29) and a speckled nucleolar pattern (AC-10). In the latter case, several dots were found in association with mitotic cell chromosomes (anti-IgG-FITC staining,  $\times 200$ ). Abbreviations: SARD, systemic autoimmune rheumatic disease; SLE, systemic lupus erythematosus; RA, rheumatoid arthritis; SSc, systemic sclerosis; ANA, antinuclear antibody; ANCA, anti-neutrophil cytoplasmic antibody; FI, fluorescence intensity; LIU, light intensity unit.

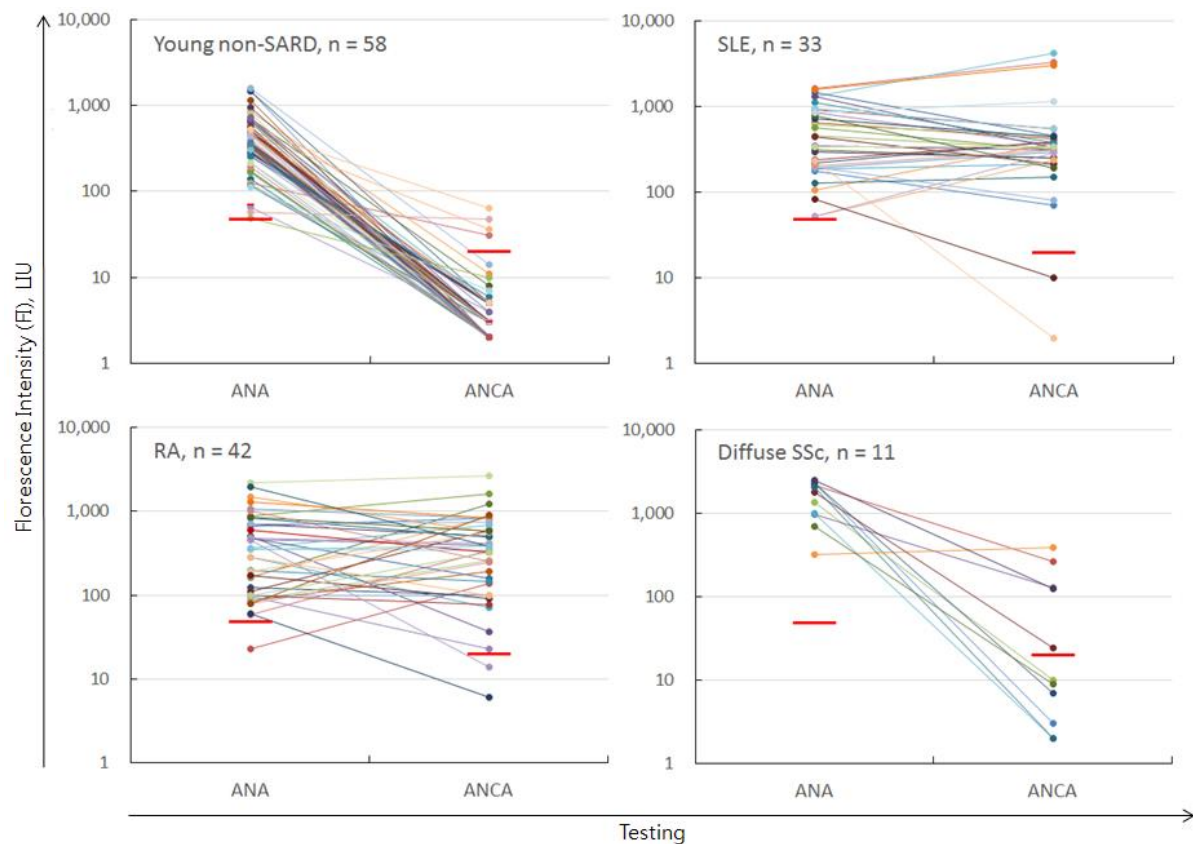


Fig. 3. Comparisons of individual results of both testing strategies using serum samples from patients with homogeneous-like patterns in HEp-2 cell nuclei on ANA testing. These are presented according to individual disease groups (young non-SARD, SLE, RA, and diffuse SSc). Most of the samples from those in the young non-SARD group show an abrupt decline in FI values (ANA > ANCA). All three pairs for comparison of FI values (ANA vs. ANCA testing) with the non-SARD group as reference were significant ( $P < 0.05$ , unpaired t-test). Abbreviations: SARD, systemic autoimmune rheumatic disease; SLE, systemic lupus erythematosus; RA, rheumatoid arthritis; SSc, systemic sclerosis; FI, fluorescence intensity; LIU, light intensity unit; ANA, antinuclear antibody; ANCA, anti-neutrophil cytoplasmic antibody.