

High-Dose Oral Insulin in Young Children at High Risk for Type 1 Diabetes: The Pre-POInT-early Clinical Trial

One Sentence Summary: Oral insulin given daily to very young children was safe and may engage the adaptive immune system in an *INSULIN* genotype-dependent manner.

Robin Assfalg^{1,2,3†}, Jan Knoop^{1†}, Kristi L. Hoffman^{4†}, Markus Pfirmann⁵, Jose Maria Zapardiel-Gonzalo¹, Anna Hofelich², Anne Eugster^{6,7}, Marc Weigelt⁶, Claudia Matzke¹, Julia Reinhardt⁶, Yannick Fuchs⁶, Melanie Bunk¹, Andreas Weiss¹, Markus Hippich¹, Kathrin Halfter⁵, Stefanie M. Hauck⁸, Jörg Hasford⁵, Joseph F. Petrosino⁴, Peter Achenbach^{1,2,3}, Ezio Bonifacio^{3,6,7,9}, Anette-Gabriele Ziegler^{1,2,3*}

¹Institute of Diabetes Research, Helmholtz Zentrum München, German Research Center for Environmental Health, Munich-Neuherberg, Germany

²Forschergruppe Diabetes, Technical University Munich, at Klinikum rechts der Isar, Munich, Germany

³German Center for Diabetes Research (DZD), Munich, Germany

⁴Alkek Center for Metagenomics and Microbiome Research, Department of Molecular Virology and Microbiology, Baylor College of Medicine, One Baylor Plaza, Houston, TX, USA

⁵Institute for Medical Information Processing, Biometry, and Epidemiology, Ludwig-Maximilians-University Munich, Germany

⁶Technische Universität Dresden, Center for Regenerative Therapies Dresden, Dresden, Germany

⁷Paul Langerhans Institute Dresden of the Helmholtz Center Munich at University Hospital Carl Gustav Carus and Faculty of Medicine, TU Dresden, Germany

⁸Research Unit Protein Science, Helmholtz Zentrum München, German Research Center for Environmental Health, Munich-Neuherberg, Germany

⁹Institute for Diabetes and Obesity, Helmholtz Diabetes Center at Helmholtz Zentrum München, Munich-Neuherberg, Germany

***Corresponding author**

Anette-Gabriele Ziegler, MD

Institute of Diabetes Research, Helmholtz Zentrum München,

Ingolstaedter Landstr. 1, 85764 Neuherberg, Germany

E-mail: anette-g.ziegler@helmholtz-muenchen.de

Phone: +49 89 3137 2896

Fax: +49 89 3187 3144

‡Joint first authors

Key Words: Oral immunotherapy, insulin, primary prevention, type 1 diabetes, autoimmunity

Word count: Abstract, 176; Main text, references, figure legends, 9805

2 Tables and 5 Figures

Abstract

Oral administration of antigen can induce immunological tolerance. We studied the safety and immunological effects of daily oral insulin immunotherapy for 12 months in 44 islet autoantibody-negative children aged 6 months to 2 years with elevated risk for type 1 diabetes randomized 1:1 to insulin or placebo. Oral insulin was well tolerated with no changes in metabolic variables. The primary immune efficacy outcome was an induction of antibody or T cell responses to oral insulin. Outcome was not different between treatment groups and responses were observed in both children who received insulin (55%) or placebo (67%). Responses were modified by the type 1 diabetes *INSULIN* gene. Antibody responses to insulin were more frequent in insulin- as compared to placebo-treated children with a susceptible genotype. Oral insulin altered the gut microbiome in an *INSULIN* genotype-related manner. Concomitant inflammation modified the *in vitro* T cell responses to insulin in children with susceptible genotypes. Oral insulin immunotherapy in young genetically at-risk children may engage the adaptive immune system in an *INSULIN* genotype-dependent manner, potentially by changes in the microbiome.

Introduction

Type 1 diabetes results from an autoimmune destruction of insulin-producing β cells in the pancreatic islets of Langerhans, and is characterized by circulating islet autoantibodies to β cell antigens (1, 2). Insulin is a key early autoantigen in childhood diabetes (3, 4). Autoimmunity against insulin often appears in genetically susceptible children aged 9 months–3 years, with a peak incidence at 9–12 months of age (5-7), and a loss of tolerance to insulin often leads to type 1 diabetes (8, 9). Immune tolerance to insulin is influenced by allelic variations in *INSULIN (INS)* (10-12) and the human leukocyte antigen (HLA) DR4-DQ8 haplotype (8) via mechanisms involving thymic T cell deletion (13, 14).

Controlled exposure to antigen leads to protection against immune-mediated diseases such as childhood allergy (15) and animal models of autoimmunity (16). In type 1 diabetes, attempts have been made to reduce disease risk in individuals with established autoimmunity by administration of antigen orally (17, 18), intranasally (19, 20), intravenously, or subcutaneously (21, 22). Treatment-associated immune effects such as increases in antibody titers (20-22) and changes in CD4⁺ T cell responses to administered autoantigen were observed in some of these studies (20), indicating that administration could lead to immune modulation. Although none of these trials achieved their primary outcomes of diabetes prevention, beneficial treatment effects were observed in exploratory analyses of subgroups within the oral insulin immunotherapy trials (17, 18).

We reasoned that, similar to peanut allergy (15), the efficacy of antigen-specific immune therapy to prevent autoimmune disease would improve if treatment was started early in life and before individuals become autoantibody positive (23). There are several challenges in commencing autoantigen-specific immune-therapy in childhood. Establishing safety is of utmost importance. Also important is the ability to identify the immune and other effects of exposure. We previously demonstrated that daily oral administration of high doses (67.5 mg) of insulin to children with a genetic risk of type 1 diabetes did not induce unwanted hypoglycemia and was associated with the induction of low affinity antibodies against insulin and insulin-responsive CD4⁺ T cell with features of regulation (24). These immune responses were not typical of autoimmune diabetes (8, 25). From these findings, we inferred that the treatment was likely to be safe and

capable of inducing an immune response that might protect against the development of type 1 diabetes. While these findings are an important proof of concept, they were obtained in children aged 2–7 years, which is after the period of greatest susceptibility to insulin autoimmunity and, therefore, late for primary prevention of islet autoimmunity. It was, therefore, prudent to assess safety in children aged less than 2 years. To address this, we have conducted the Pre-POInT-early randomized controlled trial in children aged 6 months–2 years when the risk for insulin autoimmunity is greatest. Children in this period undergo rapid growth, a transition from maternally derived immunity to acquired protection, and concomitant exposure to vaccinations and infectious agents (26) leading to large changes in the immune repertoire and the gut microbiome. Daily exposure of the mucosal immune system to a key autoantigen in genetically susceptible children during this period presents a unique opportunity to assess the interplay between these factors in eliciting immune responses.

The Pre-POInT-early trial had four major objectives. First, to determine the safety of daily oral insulin administration in very young children with high genetic susceptibility for type 1 diabetes second, to determine whether the previously observed antibody and CD4⁺ T cell findings could be observed in younger children; third, to explore interactions between oral insulin therapy and pathogenetic factors such as the *INS* genotype operating in early childhood; and fourth, to investigate if and how the microbiome may mediate responses during this period of high susceptibility.

Results

Participants

In total, 167 infants aged 6 months to 2 years with a first-degree family history of type 1 diabetes were screened (Fig. 1a). Of these, 49 were eligible based on their HLA DRB1-DQA1-DQB1 genotype and the lack of antibodies to insulin (IAA), glutamic acid decarboxylase (GADA), insulinoma-associated antigen 2 (IA-2A), or zinc transporter-8 (ZnT8A). Consent to participate was provided for 44 children (17 girls), who were randomized at a median age of 1.1 years (interquartile range [IQR], 0.8–1.7 years). There were no differences in baseline characteristics between the two groups (Table 1). All of the randomized children received at least one dose of their allocated treatment; 22 children received oral placebo (median, 12.0 months; cumulative exposure, 252.5 months) and 22 children received oral insulin (median, 12.0 months; Table S1). The insulin dose was escalated from 7.5 to 22.5 mg and to 67.5 mg (Fig. 1b), with cumulative exposure of 66.7, 67.2, and 126.2 months, respectively (Table S1). The parents of one child in the placebo group withdrew their child from the study prior to attending the 3-month follow-up visit; no adverse event reporting or immune data were available from this child. Median adherence to the allocated treatments was 97.9% for placebo and 96.9% for oral insulin (Table S1). Of 220 planned study visits, 212 (96.5%) were completed.

Glucose metabolism and laboratory findings

Oral insulin therapy was well tolerated with no evidence of treatment-related hypoglycemia. All blood glucose concentrations measured within 2 h after the first dose of placebo or oral insulin, or the first dose after each dose escalation were >50 mg/dL, except for one instance in a child in the placebo group (Fig. 2a–d). There were no differences between the placebo and insulin group in blood glucose, insulin, or C-peptide values (Table S2), the insulin/C-peptide ratio (Fig. 2e–f), or the areas under the concentration–time curves for glucose, insulin, or C-peptide (Table S2). Persistent islet autoantibodies against GAD, IA-2 or ZnT8 (study endpoint) developed 6.9 months after randomization in one child in the oral insulin group and 9.5

months in one child in the placebo group. There were no differences in blood counts and blood chemistry between the two groups (Table S3a,b).

Adverse events

A total of 114 adverse events were reported over a cumulative exposure period of 21.1 years in 21/21 children in the placebo group (5.64 events per year), and 181 adverse events were reported over a cumulative exposure period of 21.7 years in 22/22 children in the oral insulin group (8.38 events per year). The time to the first observed adverse event was not significantly different between the two groups ($P = 0.39$; log rank test). Infections were the most frequently reported adverse events (Table S4a). There was no difference in the severity of adverse events between the two groups. There were six serious adverse events, four in the oral insulin group and two in the placebo group, none of which were considered related to the study drug. By system organ class, the frequency of skin and subcutaneous tissue disorders was greater in the oral insulin group (12 events in 8 children) than in the placebo group (1 event in 1 child; $P = 0.01$; Fig.S4a). These included diaper rash, erythema, eczema, pruritus, and urticaria (Table S4b). The overall frequency of skin and subcutaneous tissue disorders among all reported adverse events was 4.3% and all of these adverse events were classified as mild (grade 1) and resolved.

Immunological response to daily oral insulin administration

The primary outcome was a positive antibody or CD4⁺ T cell response to insulin and was based on findings from the Pre-POInT trial (24). An antibody response was defined as an increase in serum IgG antibodies to insulin, salivary IgA antibodies to insulin, or serum IAA and a CD4⁺ T cell response was defined as a stimulation index (SI) above 3 that was more than 2-fold increased over baseline (see Methods). The primary outcome was observed in 26/43 (60.5%) children at 3 ($n = 13$), 6 ($n = 9$), or 9 months ($n = 4$) after randomization (Table 2), including 14/21 (66.7%; 95% confidence interval [CI] 45.4%–82.8%) in the placebo group and 12/22 (54.6%; 95% CI 34.7%–73.1%) in the oral insulin group ($P = 0.54$). Age- and sex-adjusted responses did not differ between the two groups (HR, 0.78; 95% CI, 0.36-1.70; $P = 0.53$).

The observed frequency in the placebo group was greater than our assumption based on the previous Pre-POInT study of children aged 2–7 years, in which 2/10 (20%) children had a positive antibody or CD4⁺ T cell response to insulin over 102 months of exposure ($P = 0.02$) (24). The responses to insulin in the placebo group were unexpectedly high for both antibodies (7/21) and CD4⁺ T-cells (8/21). The cumulative frequencies of antibody responses to insulin at 6 and 12 months were 19% (95% CI 0.1%–37%), and 33.4% (95% CI 13.4%–53.2%), respectively, in the placebo group, and 45.5% (95% CI 24.5%–66.5%), and 50.4% (95% CI 29.4%–71.4%), respectively, in the oral insulin group ($P = 0.18$; Fig. 3a). Responses included an increased IgG binding to insulin (7 in placebo group and 9 in oral insulin group) and a salivary IgA response to insulin (1 in placebo group and 2 in oral insulin group). The cumulative frequencies of the positive CD4⁺ T cell responses to insulin at 6 and 12 months were 33.3% (95% CI 13.4%–53.2%), and 38.5% (95% CI 18.5%–58.5%), respectively, in the placebo group, and 13.6% (95% CI 0.1%–27.6%), and 18.4% (95% CI 2.4%–34.4%), respectively, in the oral insulin group ($P = 0.15$; Fig. 3b). We also compared the CD4⁺ T cell responses to insulin between the two groups at baseline and at 12 months (Fig. 3c). The responses at 12 months were lower in the oral insulin group (median SI, 0.97; IQR, 0.71–1.21) than in the placebo group (median SI, 1.41; IQR, 0.94–2.2; $P = 0.014$).

The *INS* genotype was associated with immunological responses to treatment

Immunological responses to insulin are more frequent in children with susceptible *INS* genotypes (12, 27). Therefore, an exploratory outcome included in the statistical analysis plan was to determine the frequency of immune responses to insulin in children with the susceptible *INS* AA genotype. An antibody response to insulin was observed in 10/22 children with the susceptible *INS* AA genotype, including 2/11 children in the placebo group (cumulative frequency at 12 months, 18.2%; 95% CI 0.1%–40.4%) and 8/11 children in the oral insulin group (75.8%; 95% CI 48.8%–99.9%; $P = 0.0085$; Fig. 3d; Table S5). This difference remained significant after correction for multiple comparisons ($P = 0.032$; $n = 4$ comparisons). The majority of children with the susceptible *INS* AA genotype in the oral insulin group showed an antibody response prior to receiving the 67.5 mg dose (cumulative frequency at 6 months, 63.6%, 95% CI 20.5–83.4%). An

interaction between *INS* genotype and treatment was statistically tested using the Cox proportional hazards model and was observed for an antibody response ($P = 0.024$). Age was inversely associated with the antibody response in this model ($P = 0.032$). Age in the children with the susceptible *INS* AA genotype was not different between the placebo (median, 1.0 year) and oral insulin (median, 0.8 years) groups. The frequency of T cell responses to insulin in children with the *INS* AA genotype was not different between the placebo group (5/11) and the oral insulin group (4/11; $P > 0.99$; Table S5).

Age, *INS* genotype, and treatment are associated with microbiome alterations

The administration of high doses of oral insulin to young children presented the possibility to assess effects on a changing microbiome. Of 116 stool samples collected from 42 participants, 115 were sequenced including 40 collected at baseline, 40 at 6 months, and 35 at 12 months follow-up. The average mapped reads per sample was 16,817 with a minimum (rarefaction level) of 10,142. There was a marked relationship between the age of the children and the alpha and beta diversities of the microbiome. Bacterial richness (observed operational taxonomic units [OTUs]) and bacterial evenness (Shannon diversity) increased with age, and bacterial community metrics (unweighted Jaccard distance and weighted Bray–Curtis distance) converged with age (Fig. 4a–d). Similar findings were observed by whole genome sequencing (Fig. S2a–d). There were significant changes in the abundances of several phyla and genera over time (Fig. S3a,b).

The alpha and beta diversities of the microbiome did not differ between the oral insulin and placebo groups at 6- and 12-months follow-up. However, there were significant bacterial community differences between children with the *INS* AA genotype and children with the AT or TT genotypes, and between the treatment groups after stratification by *INS* genotype. The unweighted and weighted bacterial community metrics differed between children with the *INS* AA genotype and children with the AT or TT genotypes (unweighted Jaccard distance $P = 0.025$; weighted Bray–Curtis distance $P = 0.042$; Fig. 4e,f). The relative abundance of *Bacteroides dorei* was increased in children with the *INS* AA genotype (6.2%) versus children with the AT or TT genotypes (0.4%; $P = 0.002$; Fig. S4a). The unweighted Jaccard distance in children with the *INS* AA genotype who received oral insulin differed as compared to the placebo group and to children with the AT

or TT genotypes ($P = 0.0069$; Fig. 4g). Subtle differences in alpha diversity included a more pronounced age-related increase in bacterial richness, as measured by the observed OTUs, in children with the *INS* AA genotype in the oral insulin group as compared with the placebo group (Fig. S4b,c). There was also a potential increase in bacterial evenness (Shannon diversity) observed among children with the *INS* AA genotype who showed a positive antibody response to insulin as compared with children who showed no antibody response ($P = 0.04$; Fig. 4h).

Type 1 interferon profiles interacted with *INS* genotype to promote CD4⁺ T cell responses to insulin

Unlike the antibody responses, the frequent CD4⁺ T cell responses to insulin measured *in vitro* were not associated with age or *INS* genotype. We reasoned that the children were at a critical age of exposure to vaccination and infection, which may influence the immune response to insulin. Therefore, we examined the cell profiles of children at each study visit and frequently observed samples with CD169 (Siglec-1) expression on monocytes (59/208, 28.5%; Fig. 5a,b), an indication of an ongoing type 1 interferon response (28). This feature was observed in 32/43 (74%) children and was found on multiple samples in 19 (44%) children. CD169 expression on monocytes was associated with the relative frequency of the inflammatory type intermediate (CD14⁺⁺CD16⁺) monocytes ($r = 0.52$; $P < 0.0001$; Fig. 5c), and both of these features were associated with an increased frequency of activated (CD69⁺) T cells (CD169⁺ monocytes, $r = 0.34$, $P < 0.0001$; intermediate monocytes, $r = 0.65$, $P < 0.0001$). Monocyte CD169 expression was also associated with decreased gut microbiome richness ($P = 0.033$; Fig. S5a,b) and younger age ($P = 0.014$; Fig. S5c). Adverse events were more frequently reported in the 2 weeks prior to blood draw for follow-up samples that were monocyte CD169⁺ (20/49, 40.8%) as compared to samples that were CD169⁻ (21/118, 17.8%; $P = 0.0028$).

Strikingly, we found an association between CD169 expression and positive CD4⁺ T cell responses to insulin (SI > 3; 12/50 CD169⁺ vs 10/146 CD169⁻; $P = 0.0026$), suggesting that the *in vitro* assay may be affected by the inflammatory state of the sample. The *INS* gene modified this association, which was only observed in children with the susceptible genotype (Fig. 5d). Among children with the *INS* AA genotype,

CD4⁺ T cell responses to insulin were observed in 9/31 (29%) CD169⁺ samples versus 2/68 (3%) CD169⁻ samples ($P = 0.0004$). A similar relationship between monocyte CD169 expression and T cell response to insulin in children with the *INS* AA genotype was observed for CD8⁺ T cells (Fig. S6). Oral insulin treatment did not influence the T cell responses in relation to monocyte CD169 expression in children with the *INS* AA genotype ($P = 0.77$). Monocyte CD169 expression was not associated with antibody responses to insulin.

We examined the gene transcription profiles of insulin-responsive CD4⁺ T cells in relation to monocyte CD169 expression and *INS* genotype. The expression of 76 genes was analyzed in 1036 insulin-responsive CD4⁺ T cells from samples with a >3 SI response to insulin. The profiles were distributed in 11 cell clusters (Fig. S7a), including two clusters with features of Th1/Th21-like T cells (*IFNG*, *IL-21*; clusters 2 and 3; $n = 184$ cells), and three clusters with features of Tregs (*FOXP3*, low *CD127* and low cytokine expression; clusters 9, 10, and 11; $n = 313$ cells; Fig. S7b). The distribution across clusters differed between cells from CD169⁺ and CD169⁻ samples ($P = 1.5 \times 10^{-10}$) and between cells from children with the *INS* AA genotype and the AT or TT genotypes ($P = 4.3 \times 10^{-7}$). Consistent with the association of T cell responses with CD169 expression in samples from *INS* AA children, the distribution across clusters also differed between the CD169⁺ and CD169⁻ samples from children with the *INS* AA genotype ($P = 0.0003$), but not among samples from children with the AT or TT genotypes ($P = 0.060$). Among children with the *INS* AA genotype, the CD169⁺ samples contained a higher proportion of insulin-responsive cells in the Th1/Th21-like clusters (88/323; 27.2%) than the CD169⁻ samples (28/163, 17.2%; $P = 0.0094$) and a lower proportion of insulin-responsive cells in the Treg-like clusters (67/323, 19.4% vs. 46/163, 28.2%; $P = 0.0028$; Fig. 5e). The proportion of cells in the Treg-like clusters did not increase during oral insulin treatment.

Immune cell and inflammatory marker profiles were unaffected by *INS* gene or oral insulin treatment

The relationships between *INS* genotype, treatment, inflammation and immune response prompted an examination of immune profiles. We found cell populations that were constant over the 12-month follow-up within individuals but showed strong inter-individual differences (Treg, CD8⁺ T cells; Fig. S8a,b); other

cell populations varied across measurements within children (activated CD8⁺ T cells, intermediate monocytes; Fig. S8c,d). Age was strongly correlated with the frequency of peripheral blood mononuclear cell populations (Fig. S9a,b) and with the plasma concentration of several inflammatory markers, and there were multiple plasma markers correlated with each other, monocyte CD169 expression, and the frequency of cell populations (Fig. S10, Table S6). In particular, monocyte CD169 expression was strongly correlated with the levels of the proinflammatory plasma proteins CXCL10 ($r = 0.49$; $P = 0.0002$), IL-6 ($r = 0.42$; $P = 0.0038$), and IFN γ ($r = 0.39$; $P = 0.0095$). No differences in cell population frequency or plasma inflammatory markers were observed between the children who received oral insulin and placebo in the whole group or in the children with *INS* AA genotype (Fig. S9c,d).

Discussion

The Pre-POInT-early study demonstrated that daily oral administration of up to 67.5 mg insulin to healthy, genetically at-risk, islet autoantibody-negative children at 6 months to 2 years of age was well tolerated without signs of hypoglycemia. The study failed to meet its primary outcome of immune efficacy defined by the findings in a study of older children (24) as a composite of antibody and CD4⁺ T cell responses to insulin. The children enrolled in Pre-POInT-early showed unexpectedly high antibody and T cell responses to insulin, which were associated with younger age, a monocyte inflammatory profile, and an interaction between treatment and the type 1 diabetes susceptible *INS* genotype. Treatment effects were identified in sub-group analyses of children with the susceptible *INS* genotype and included antibody responses to insulin and differences in the microbiome between children in the oral insulin and placebo groups.

Although hypoglycemia was not previously reported during treatment with oral insulin (17, 18, 24), children <2 years of age have not previously been exposed to oral insulin. Therefore, the absence of hypoglycemia at any of the tested doses with a cumulative exposure of >21 years is an important safety outcome. We also found no differences in glucose, insulin, and C-peptide over a 2-h period after administration of insulin compared with administration of a placebo. To our knowledge, this is the first study to include comprehensive metabolic measures upon administration of oral insulin in all participating children. These data indicate that oral insulin is unlikely to enter the blood stream, a conclusion that was important for initiating the POInT phase 2b trial in 4–6-month-old infants (29). Of note, the induction of tolerance by oral antigen is thought to be via antigen uptake in the oral and/or gut mucosa and does not require entry into the blood stream.

As in the Diabetes Prevention Trial-Type 1 (DPT-1) (17), TrialNet (18), and Pre-POInT (24) trials, we observed no signs of allergy or intolerance to orally administered insulin. The frequency of adverse events was not increased in the oral insulin group, except for skin and subcutaneous tissue disorders. This was not observed in larger secondary prevention DPT-1 (17) and TrialNet (18) trials, where children from 3 years of age were treated with a daily dose of 7.5 mg oral insulin. It is possible that our finding was due to the exposure of children at ≤ 3 years of age or the use of higher oral insulin doses that may increase the likelihood

of skin exposure to study drug. The overall frequency of skin and subcutaneous tissue disorders among all reported adverse events (4.3%) is comparable with that in TrialNet (7.7%) (18). Unlike some of the previous studies, our study included mandatory reporting of grade 1 (mild) events. All skin and subcutaneous tissue adverse events in our study were classified as mild, resolved during course of the study, and were not correlated with other blood chemistry measurements or inflammatory markers.

In addition to establishing safety, our objective was to find evidence for a treatment-induced immune response, which included IgG binding to insulin, salivary IgA against insulin, and CD4⁺ T cell responses to insulin. The study design and sample size were based on results from the previous Pre-POInT study, which enrolled children at 2–7 years of age with greater genetic risk (24). Using the same outcomes and measurement methods, we observed a higher overall reactivity to insulin in the placebo group in this study (67%) than in the previous Pre-POInT study (20%), markedly reducing the study power. Our misjudgment on the effect size in favor of oral insulin, leading to the inclusion of 44 children presents a major study limitation. The younger age of the children is the main difference compared with the previous study and is likely to contribute to the higher frequency of immune responses to insulin in this study. Evidence for this include the association between the antibody responses to insulin and younger age, and the correlation between age and T cell and monocyte subset compositions, with the latter being associated with the T cell responses to insulin. Other limitations of the study include the short follow-up period on relatively few children, which prevented us from assessing the efficacy of treatment in preventing islet autoimmunity or type 1 diabetes. A strength of the study is that, despite the challenge of obtaining blood samples from young children, adherence to the study protocol was high with comprehensive sample and data collection. This allowed us to collect extensive mechanistic data under the stringent conditions of a randomized controlled trial, in which all data with the exception of the plasma inflammatory markers were collected centrally before unblinding. These data included deep phenotyping of the immune responses and microbiome during early childhood and provided new insights into how oral insulin perturbs the immune system and disease mechanism. Many of these were based on exploratory and sub-group analyses that were not corrected for multiple comparisons, and, therefore, require validation in subsequent studies such as the POInT trial (29).

We found that the *INS* genotype influenced some of the immune efficacy measures. In particular, we observed a robust effect of oral insulin on the antibody response in children with the susceptible *INS* AA genotype, suggesting that the *INS* gene modifies the likelihood of the immune system responding to oral insulin. The response was observed at the 22.5 mg dose, which is lower than in the previous study (24) and may reflect the lower body weight of children in the present study. Genetic susceptibility criteria in the earlier Pre-POInT study were more stringent and, although *INS* genotyping was unavailable, it is likely that the majority of participants had the susceptible AA genotype. We also discovered differences in the microbiome composition between children with susceptible and non-susceptible *INS* genotypes and after oral insulin treatment in children with the susceptible *INS* AA genotype. This included differences in bacterial diversity and richness, and an increased abundance of *Bacteroides dorei* in children with the susceptible *INS* genotype, a finding that is consistent with, and may explain, the increased abundance of *Bacteroides dorei* in children who developed type 1 diabetes in a Finnish study (30). Therefore, oral insulin was associated with an antibody response and changes in the gut microbiota and both of these effects were modified by *INS*. A question emerging from these findings is whether these were independent associations or whether the effects of oral insulin on the microbiome increased the likelihood of an antibody response. The increased alpha diversity in children treated with oral insulin who showed an antibody response compared with those without a response is consistent with the concept that the treatment's effects on the microbiome may have mediated the immune response.

Unlike the antibody outcome, the *in vitro* T cell responses to insulin were not associated with treatment after stratification by the *INS* genotype. The T cell responses were, however, strongly associated with monocyte CD169 expression, providing new insights into disease pathogenesis. Monocyte CD169 expression is a sensitive marker of a type 1 interferon signature, which increases before islet autoantibody seroconversion in young children and is associated with respiratory infection (28). CD169⁺ samples were surprisingly frequent and observed in the majority of children. They were also associated with recent adverse events, younger age, and several other inflammatory markers. The findings indicate substantial inflammatory responses in this age period that may reflect increased exposure to infection, vaccines, or other inflammatory

conditions, and/or a greater inflammatory response in young children. Early infection is associated with islet autoimmunity (31-33) and type 1 diabetes (34). Thus, our findings that *in vitro* T cell responses to insulin were more likely to occur in CD169⁺ samples in children with the susceptible *INS* AA genotype may be relevant to the mechanism of insulin autoimmunity. We believe that our results do not reflect the presence of *in vivo* primed T cells, but rather a heightened ability of the CD169⁺ monocytes to activate naive T cells in the *in vitro* assay. Children with the susceptible *INS* genotype are expected to have more peripheral insulin-autoreactive T cells (13, 14). Extending our *in vitro* findings, we suggest that a type 1 interferon response to infection in antigen-presenting cells *in vivo* further increases the likelihood of activating these T cells and eventually leads to insulin autoimmunity. The observation that the insulin-responsive cells from the CD169⁺ samples contained more Th1/Th21 cells and fewer Tregs supports this hypothesis, and may also explain our previous finding of proinflammatory, proinsulin-responsive T cells in infants who later developed islet autoimmunity (25). The requirement of danger signals for the activation of naive T cells is well documented (35) and findings in the NOD mice with respect to type 1 interferon receptor generally support a role of innate immune pathways, activated macrophages and microbiome in autoimmune diabetes (36-38). However, to our knowledge, this is the first demonstration of a relationship between the innate immune status and the T cell response to an antigen in unmanipulated samples obtained from children. Nevertheless, a consequence of our findings is that the T cell response assay used to measure the treatment outcome is likely to be compromised in very young children and may be unsuitable for the detection of *in vivo* primed T cells against oral insulin in these children.

Overall, this study demonstrated safety for high dose oral insulin administration in young children, but did not reach its primary immune efficacy outcome. Exploratory analyses, however, provide evidence that insulin, when administered orally to very young children, is detected by the immune system and that its response is modified by the *INS* gene. We, therefore, advocate that ongoing and future trials should incorporate stratification by *INS* genotype into their study design and analyses. Although oral insulin appears to modify the immune response, we do not know if this will also increase tolerance. The efficacy of preventing islet autoimmunity is currently under investigation (29).

Methods

Participants

The Pre-POInT-early study was a randomized, placebo-controlled, double blind, single-center, pilot phase II clinical study (Clinicaltrials.gov NCT02547519). Participants were recruited between December 2015 and December 2016. Follow-up visits were completed in December 2017. Children were eligible if they were aged 6 months to 2.99 years, seronegative for IAA, GADA, IA-2A, and ZnT8A, and at high genetic risk of developing type 1 diabetes. High genetic risk was defined by a first-degree relative with type 1 diabetes diagnosed before 40 years old and a HLA genotype that included the HLA DR4-DQB1*0302 or HLA DR4-DQB1*0304 haplotypes, and did not include one of the following alleles or haplotypes: DR 11, DR 12, DQB1*0602, DR7-DQB1*0303, DR14-DQB1*0503. The study was approved by the Ethikkommission der Fakultät für Medizin der Technischen Universität München (206/15). The parents or legal guardians of each child provided written informed consent. The study was performed in compliance with the current version of the Helsinki declaration.

Randomization and masking

A computer-generated randomization list was prepared with an allocation ratio of 1:1 (placebo to oral insulin) using a web-based system (<https://wwwapp.ibe.med.uni-muenchen.de/randoulette/>). All investigators and participants were masked to the treatment allocation. Unblinding was not necessary during the study.

Intervention

Insulin crystals were provided by Lilly Pharmaceuticals (Indianapolis, Indiana). The investigational products (insulin and placebo) were manufactured as identical capsules containing either insulin crystals (7.5, 22.5, or 67.5 mg) in microcrystalline cellulose (total capsule content 200 mg) or 200 mg microcrystalline cellulose placebo by InPhaSol, Apotheke des Universitätsklinikums Heidelberg, Germany.

The drug packages were sequentially numbered according to the randomly allocated treatment. Parents were instructed to sprinkle the contents of one capsule onto one teaspoon of food (e.g. yogurt, breast milk, or commercial baby food) for administration once daily.

Children were randomized 1:1 to receive oral insulin or placebo for a period of 12 months. Children in the oral insulin group received 7.5 mg of insulin for 3 months, then 22.5 mg for 3 months, and finally 67.5 mg for 6 months (Fig. 1b). Follow-up visits were scheduled at 3, 6, 9, and 12 months after starting treatment.

Procedures

Blood samples and saliva were collected at each visit to determine islet autoantibodies, immune responses to insulin, lymphocyte and monocyte subsets, and salivary IgA antibodies to insulin. At the baseline, 3-month, and 6-month visits, blood samples were collected before (−10 min) and 30, 60, 90, and 120 min after study drug intake to measure blood glucose, insulin, and C-peptide. Blood cell counts, liver function, electrolytes, IgE, and plasma markers of inflammation were measured at baseline (visit 1) and 12 months (visit 5). Stool samples were collected to assess the microbiome at baseline, 6 months, and 12 months. Medication adherence was assessed by family self-reporting of daily capsule administration using adherence sheets. Children reached study endpoint and stopped treatment if they developed persistent autoantibodies (GADA, IA-2A, or ZnT8A) or clinical diabetes. The development of IAA was not considered as an endpoint as it was considered a potential response to oral insulin. The final statistical analysis plan of the study was signed on July 3, 2018. All data except the plasma markers of inflammation were submitted before the data hardlock which was signed on July 18, 2018: Data was unblinded by the independent study statistician on July 24, 2018.

Measurements related to safety

Serum insulin and C-peptide concentrations were measured by fluorescence enzyme immunoassays using an automated immunoassay analyzer (AIA-360, Tosoh Bioscience Inc., South San Francisco, CA). The families were instructed to note any symptoms of hypoglycemic events such as trembling, sweating or

impaired consciousness after study drug intake. Hypoglycemia was defined as a blood glucose level <50 mg/dL (2.78 mmol/L). IgE against insulin was measured using a radiobinding assay (39). Islet autoantibodies (GADA, IA-2A, and ZnT8A) were measured using harmonized radiobinding methods (40, 41). Throughout the study, the investigators recorded any adverse events using an adverse event clinical report form, regardless of the event's severity or relation to the study drug or study procedure.

Measurements of immunological response

The primary immune efficacy outcome was an immune response to insulin, defined as an increase in any one or more of the following: serum IgG antibodies to insulin, salivary IgA antibodies to insulin, serum IAA, or a CD4⁺ T cell response to insulin. Additional outcomes included the antibody and CD4⁺ T cell responses in children with the *INS* AA genotype, the gene expression profile CD4⁺ T cells responding to insulin, T lymphocyte and monocyte subset frequencies, stool microbiome, and plasma inflammatory markers.

Insulin autoantibody levels were measured using a competitive radiobinding assay (42, 43). A positive response was defined as a value of ≥ 1.5 and a ≥ 2 -fold increase from baseline. IgG binding to insulin was measured by a non-competitive radiobinding assay with protein-G capture of IgG (44). A positive response was defined as an increase of >10 counts/min from the baseline value. Salivary IgA binding to insulin was measured using a radiobinding assay as previously described (24). A positive response was defined as an increase of ≥ 3 -fold from baseline.

CD4⁺ T cell antigen responses were measured using stored frozen peripheral blood mononuclear cells (PBMCs). Responses were measured using a dye (Cell Proliferation Dye eFluor 670, eBioscience, San Diego, CAL) dilution assay, quantifying proliferation (eFluor670^{dim} cells) and activation (CD25⁺) after 5 days of culture without or with the antigen insulin (50 μ g/mL, Lilly Pharmaceuticals) as previously described (24) (Fig. S11). The assay included a median of 12 wells containing 200,000 eFluor670 dye-labelled cells in medium plus insulin and 6 wells with cells and medium alone. The SI was calculated as the number of CD4⁺ eFluor670^{dim}CD25⁺ cells per 50,000 acquired live CD4⁺ T cells in all wells containing

insulin relative to the number of CD4⁺ eFluor670^{dim}CD25⁺ cells per 50,000 acquired live CD4⁺ T cells in all wells containing medium alone. A positive sample was defined as an SI of >3. A positive T cell outcome was defined as a positive sample and an increase in SI of >2-fold at any follow-up visit relative to the baseline value. CD8⁺ T cell proliferation responses to insulin were also measured in the same assay by gating on CD8⁺CD4⁻ T cells (Fig. S11).

***INS* genotyping**

Genomic DNA was amplified using primers (forward: 5'-GGTCTGTTCCAAGGGCCTTT-3'; biotinylated reverse: 5'-ATGGCAGAAGGACAGTGATCTGG-3') targeting rs689 of *INS* and the SsoFast EvaGreen Supermix on a CFX96 system (Bio-Rad, Hercules, CA) according to manufacturer's protocol. Subsequently, genotyping of rs689 was performed by pyrosequencing on a PyroMark Q48 Autoprep using a sequencing primer (5'-CTCAGCCCTGCCTGT-3') and PyroMark Q48 Advanced Reagents (Qiagen, Hilden, Germany) according to manufacturer's protocol. Primer design and SNP analysis was carried out using the PyroMark Assay Design 2.0 and PyroMark Q48 Autoprep 2.4.2 Software (Qiagen), respectively.

Phenotyping of lymphocytes and monocytes

Freshly isolated PBMCs (2.5×10^5 cells) were incubated for 1 min at room temperature with Fc receptor blocking reagent (Miltenyi Biotec, Bergisch Gladbach, Germany). Cell surface markers were stained for 20 min at 4 °C in phosphate-buffered saline (PBS) without Ca²⁺ and Mg²⁺ (PBS^{-/-}; Gibco) containing 0.5% bovine serum albumin using the following mouse anti-human monoclonal antibodies: anti-CD3 Alexa Fluor 700 (clone HIT3 α ; BioLegend, San Diego, CAL), anti-CD4 Brilliant Violet 510 (SK3; BD Biosciences, San Jose, CAL), anti-CD8a Brilliant Violet 605 (RPA-T8), anti-CD14 Pacific Blue (HCD14), anti-CD16 PerCP-Cy5.5 (3G8; all BioLegend), anti-CD25 PE (M-A251; BD Biosciences), anti-CD45RA PE-Cy5 (HI100; BioLegend), anti-CD69 fluorescein isothiocyanate (FN50; BD Biosciences), anti-CD127 PE-Cy7 (A019D5) and anti-CD169 Alexa Fluor 647 (7-239; both BioLegend). Cells were washed twice in PBS^{-/-} and stained for 20 min at room temperature with Zombie NIR (BioLegend) to evaluate cell viability. PBMCs

were fixed with 1.5% formalin in PBS^{-/-} and analyzed within 24 h on a flow cytometer (LSR Fortessa, Becton Dickinson, Franklin Lakes, NJ) using FACSDiva acquisition software (Version 7.0; BD Biosciences). FlowJo software (Version 10; TreeStar Inc., Ashland, OR) was used to analyze lymphocyte and monocyte subsets.

Single-cell gene expression profiling

CD4⁺ T cells that had proliferated, as determined by eFluor® 670 dilution, and displayed CD25 upregulation were identified as responding cells and were single-cell-sorted directly into 96-well microplates containing 5 µL of PBS prepared with diethylpyrocarbonate-treated water. For samples that had an SI against insulin above 3, cells were processed for gene expression. cDNA was synthesized directly from cells using qScript™ cDNA Supermix (Quanta Biosciences, Gaithersburg, MD). Total cDNA was pre-amplified for 18 cycles, with 1 cycle of denaturation at 95 °C for 1 min, followed by cycling at 95 °C for 15 s, 60 °C for 1 min, and 72 °C for 1.5 min, followed by one cycle of 72 °C for 7 min, with TATAA GrandMaster Mix (TATAA Biocenter, Göteborg, Sweden) in the presence of 76 primer pairs at a final volume of 35 µL. Then, 10 µL of preamplified DNA was treated with 1.2 units of exonuclease I. To quantify gene expression, real-time PCR was performed on the BioMark™ HD System (Fluidigm Corporation, South San Francisco, CA) using the 96.96 Dynamic Array IFC according to the GE 96 × 96 Fast PCR+ Melt protocol with SsoFast EvaGreen Supermix containing Low ROX (Bio-Rad) and 5 µM of primers in each assay. The primers and target genes are listed in Table S7. Raw data were analyzed using Fluidigm Real-Time PCR analysis software and GenEx Pro 5.3.6 Software (MultiD, Göteborg, Sweden). Additional data analysis was done using KNIME 2.5.2 software. Analysis of multivariate gene expression patterns was performed by Uniform Manifold Approximation and Projection for Dimension Reduction (UMAP) (45) and unsupervised WARD hierarchical clustering (hclust) on the pre-processed Ct values. For pre-processing, a linear model was used to correct for potential confounding effects, which can mask relevant biological variability (46). In brief, batch effects (dummy coding for each plate/batch) were modeled jointly with dose effects by regressing out

the effect of plates on each individual gene while controlling for dose in order to obtain a corrected gene expression dataset.

Stool microbiome

Stool samples were collected at home at the day of the visit or within two days before or after the visit at baseline, 6 months, and 12 months, into tubes containing ethanol that were provided to the parents. The samples were brought to the visit, aliquoted, and stored at -80°C . Alternatively, samples could be sent to the central laboratory with guaranteed delivery within 24 h. The bacterial component of the microbiome in each stool sample was analyzed by 16S rRNA gene compositional analysis, as previously described (26). To generate 16S rDNA data, genomic bacterial DNA was extracted from the samples using MO BIO PowerMag Soil DNA Isolation Kit (Qiagen). The 16S rDNA V4 region was amplified by PCR and sequenced in the MiSeq platform (Illumina) using the 2×250 bp paired-end protocol. The primers used for amplification contained adapters for MiSeq sequencing and dual-index barcodes so that the PCR products may be pooled and sequenced directly (47), targeting at least 10,000 reads per sample. The standard pipeline for processing and analyzing the 16S rDNA gene data incorporated phylogenetic and alignment-based approaches to maximize data resolution. The read pairs were demultiplexed based on the unique molecular barcodes, and reads were merged using USEARCH v7.0.1001 (48). 16S rRNA gene sequences were assigned into Operational Taxonomic Units (OTUs) or phylotypes at a similarity cutoff value of 97% using the UPARSE pipeline. Abundances were recovered by mapping the demultiplexed reads to the UPARSE OTUs.

A subset of samples was selected for metagenomic whole genome shotgun (WGS) sequencing for deeper characterization. Metagenomic WGS sequencing utilized the same extracted bacterial genomic DNA used for 16S rDNA compositional analysis. For WGS, individual libraries constructed from each sample were loaded into the HiSeq platform (Illumina) and sequenced using the 2x100 bp pair-end read protocol. The process of quality filtering, trimming and demultiplexing was carried out by in-house pipeline developed by assembling a number of publicly available tools such as Casava v1.8.3 (Illumina) for the generation of

fastqs, Trim Galore and cutadapt for adapter and quality trimming, and PRINSEQ for sample demultiplexing. In addition, Bowtie2 v2.2.1 (49) was used to map reads to custom databases for bacteria, viruses, human, and vectors. Reads whose highest identity match was not bacterial were removed from subsequent analysis. For bacterial reads, the highest identity match was chosen. If there were multiple top hits, the lowest common ancestor was determined.

Plasma inflammatory markers

Inflammation-related protein biomarkers were determined after unblinding of participants. Measurements were performed by proximity extension assay using the Olink inflammation panel (Olink, Uppsala, Sweden) following manufacturer's instructions.

Statistical analysis

Sample size

The primary endpoint of the study was immune efficacy. The null hypothesis was that the probability of developing an antibody and/or T cell response to insulin in the oral insulin group equals the probability of developing an antibody and/or T cell response in the placebo group. Based on results of the Pre-POInT study (24), response rates of 20% in the placebo group and 67% in the oral insulin group were assumed. Accordingly, enrolment and randomization of 44 children 1:1 to two treatment groups was expected to be sufficient to reject the null hypothesis with a two-sided Fisher's exact test at a significance level of 0.05 and a power of 80% and 10% dropout. The sample size estimation was performed using PS Power and Sample Size Calculations software version 3.0.43 (50).

Statistical comparisons

To compare continuous variables between the two independent groups, we used the Mann–Whitney U test with normal approximation. The Kruskal-Wallis test was applied when the number of groups was larger than two. Differences in categorical variables between the groups were assessed using Fisher's exact test.

Unless otherwise indicated, continuous variables are reported as the median and IQR. The probabilities of time-to-event variables were estimated with the Kaplan–Meier method and compared with the log-rank test. Additional analyses were planned to compare the immunological outcomes in children with the *INS* AA genotype and treatment effects on the stool microbiome. These and all other analyses were considered exploratory. An interaction between *INS* genotype and treatment on immunological responses to insulin was assessed using the Cox proportional hazards model. All analyses comparing responses in relation to monocyte CD169 expression, and analyses of cell frequency and plasma inflammatory markers were defined post-hoc. Spearman’s correlation was calculated to assess the correlation between two continuous variables. Differences between groups’ centroids defined by a principal component analysis (PCA) were assessed using a permutational multivariate analysis of variance (PERMANOVA). Analysis of age relationships to cell population frequencies included a linear mixed model with the cell frequencies as fixed effects and the children identification numbers as a random effect was fitted to predict the age. Stool analyses were conducted to characterize differences in the microbiome between the two treatment groups, including stratification by *INS* AA genotype and to determine the relationship of the microbiome to the immune responses in blood. Differences in beta diversity were visualized using a principal coordinates analysis (PCoA) followed by a PERMANOVA to assess differences between groups. The significance level of two-sided *P* values was 0.05 for all statistical tests. Point estimates are given together with the 95% CIs.

References

1. M. A. Atkinson, G. S. Eisenbarth, A. W. Michels, Type 1 diabetes. *Lancet* **383**, 69-82 (2014).
2. E. Bonifacio, P. Achenbach, Birth and coming of age of islet autoantibodies. *Clinical and experimental immunology* **198**, 294-305 (2019).
3. A. G. Ziegler, M. Hummel, M. Schenker, E. Bonifacio, Autoantibody appearance and risk for development of childhood diabetes in offspring of parents with type 1 diabetes: the 2-year analysis of the German BABYDIAB Study. *Diabetes* **48**, 460-468 (1999).
4. J. Ilonen, A. Hammis, A. P. Laine, J. Lempainen, O. Vaarala, R. Veijola, O. Simell, M. Knip, Patterns of beta-cell autoantibody appearance and genetic associations during the first years of life. *Diabetes* **62**, 3636-3640 (2013).
5. J. P. Krischer, K. F. Lynch, D. A. Schatz, J. Ilonen, A. Lernmark, W. A. Hagopian, M. J. Rewers, J. X. She, O. G. Simell, J. Toppari, A. G. Ziegler, B. Akolkar, E. Bonifacio, T. S. Group, The 6 year incidence of diabetes-associated autoantibodies in genetically at-risk children: the TEDDY study. *Diabetologia* **58**, 980-987 (2015).
6. V. Parikka, K. Nanto-Salonen, M. Saarinen, T. Simell, J. Ilonen, H. Hyoty, R. Veijola, M. Knip, O. Simell, Early seroconversion and rapidly increasing autoantibody concentrations predict prepubertal manifestation of type 1 diabetes in children at genetic risk. *Diabetologia* **55**, 1926-1936 (2012).
7. A. G. Ziegler, E. Bonifacio, B.-B. S. Group, Age-related islet autoantibody incidence in offspring of patients with type 1 diabetes. *Diabetologia* **55**, 1937-1943 (2012).
8. P. Achenbach, K. Koczwara, A. Knopff, H. Naserke, A. G. Ziegler, E. Bonifacio, Mature high-affinity immune responses to (pro)insulin anticipate the autoimmune cascade that leads to type 1 diabetes. *The Journal of clinical investigation* **114**, 589-597 (2004).
9. A. G. Ziegler, M. Rewers, O. Simell, T. Simell, J. Lempainen, A. Steck, C. Winkler, J. Ilonen, R. Veijola, M. Knip, E. Bonifacio, G. S. Eisenbarth, Seroconversion to multiple islet autoantibodies and risk of progression to diabetes in children. *Jama* **309**, 2473-2479 (2013).
10. S. T. Bennett, A. M. Lucassen, S. C. Gough, E. E. Powell, D. E. Undlien, L. E. Pritchard, M. E. Merriman, Y. Kawaguchi, M. J. Dronsfield, F. Pociot, et al., Susceptibility to human type 1 diabetes at IDDM2 is determined by tandem repeat variation at the insulin gene minisatellite locus. *Nat Genet* **9**, 284-292 (1995).
11. B. J. Barratt, F. Payne, C. E. Lowe, R. Hermann, B. C. Healy, D. Harold, P. Concannon, N. Gharani, M. I. McCarthy, M. G. Olavesen, R. McCormack, C. Guja, C. Ionescu-Tirgoviste, D. E. Undlien, K. S. Ronningen, K. M. Gillespie, E. Tuomilehto-Wolf, J. Tuomilehto, S. T. Bennett, D. G. Clayton, H. J. Cordell, J. A. Todd, Remapping the insulin gene/IDDM2 locus in type 1 diabetes. *Diabetes* **53**, 1884-1889 (2004).
12. M. Walter, E. Albert, M. Conrad, E. Keller, M. Hummel, K. Ferber, B. J. Barratt, J. A. Todd, A. G. Ziegler, E. Bonifacio, IDDM2/insulin VNTR modifies risk conferred by IDDM1/HLA for development of Type 1 diabetes and associated autoimmunity. *Diabetologia* **46**, 712-720 (2003).
13. P. Vafiadis, S. T. Bennett, J. A. Todd, J. Nadeau, R. Grabs, C. G. Goodyer, S. Wickramasinghe, E. Colle, C. Polychronakos, Insulin expression in human thymus is modulated by INS VNTR alleles at the IDDM2 locus. *Nat Genet* **15**, 289-292 (1997).
14. A. Pugliese, M. Zeller, A. Fernandez, Jr., L. J. Zalcberg, R. J. Bartlett, C. Ricordi, M. Pietropaolo, G. S. Eisenbarth, S. T. Bennett, D. D. Patel, The insulin gene is transcribed in the human thymus and transcription levels correlated with allelic variation at the INS VNTR-IDDM2 susceptibility locus for type 1 diabetes. *Nat Genet* **15**, 293-297 (1997).
15. G. Du Toit, G. Roberts, P. H. Sayre, H. T. Bahnson, S. Radulovic, A. F. Santos, H. A. Brough, D. Phippard, M. Basting, M. Feeney, V. Turcanu, M. L. Sever, M. Gomez Lorenzo, M. Plaut, G. Lack,

- L. S. Team, Randomized trial of peanut consumption in infants at risk for peanut allergy. *The New England journal of medicine* **372**, 803-813 (2015).
16. S. D. Miller, D. M. Turley, J. R. Podojil, Antigen-specific tolerance strategies for the prevention and treatment of autoimmune disease. *Nat Rev Immunol* **7**, 665-677 (2007).
 17. J. S. Skyler, J. P. Krischer, J. Wolfsdorf, C. Cowie, J. P. Palmer, C. Greenbaum, D. Cuthbertson, L. E. Rafkin-Mervis, H. P. Chase, E. Leschek, Effects of oral insulin in relatives of patients with type 1 diabetes: The Diabetes Prevention Trial--Type 1. *Diabetes care* **28**, 1068-1076 (2005).
 18. G. Writing Committee for the Type 1 Diabetes TrialNet Oral Insulin Study, J. P. Krischer, D. A. Schatz, B. Bundy, J. S. Skyler, C. J. Greenbaum, Effect of Oral Insulin on Prevention of Diabetes in Relatives of Patients With Type 1 Diabetes: A Randomized Clinical Trial. *Jama* **318**, 1891-1902 (2017).
 19. K. Nanto-Salonen, A. Kupila, S. Simell, H. Siljander, T. Salonsaari, A. Hekkala, S. Korhonen, R. Erkkola, J. I. Sipila, L. Haavisto, M. Siltala, J. Tuominen, J. Hakalax, H. Hyoty, J. Ilonen, R. Veijola, T. Simell, M. Knip, O. Simell, Nasal insulin to prevent type 1 diabetes in children with HLA genotypes and autoantibodies conferring increased risk of disease: a double-blind, randomised controlled trial. *Lancet* **372**, 1746-1755 (2008).
 20. L. C. Harrison, M. C. Honeyman, C. E. Steele, N. L. Stone, E. Sarugeri, E. Bonifacio, J. J. Couper, P. G. Colman, Pancreatic beta-cell function and immune responses to insulin after administration of intranasal insulin to humans at risk for type 1 diabetes. *Diabetes care* **27**, 2348-2355 (2004).
 21. G. Diabetes Prevention Trial--Type 1 Diabetes Study, Effects of insulin in relatives of patients with type 1 diabetes mellitus. *The New England journal of medicine* **346**, 1685-1691 (2002).
 22. H. Elding Larsson, M. Lundgren, B. Jonsdottir, D. Cuthbertson, J. Krischer, A.-I. T. S. G. Di, Safety and efficacy of autoantigen-specific therapy with 2 doses of alum-formulated glutamate decarboxylase in children with multiple islet autoantibodies and risk for type 1 diabetes: A randomized clinical trial. *Pediatric diabetes* **19**, 410-419 (2018).
 23. E. Bonifacio, A. Ziegler, P. Achenbach, J. Barker, G. Eisenbarth, Translating mucosal antigen based prevention of autoimmune diabetes to human. *Novartis Found Symp* **292**, 187-199; discussion 199-201, 202-183 (2008).
 24. E. Bonifacio, A. G. Ziegler, G. Klingensmith, E. Schober, P. J. Bingley, M. Rottenkolber, A. Theil, A. Eugster, R. Puff, C. Peplow, F. Buettner, K. Lange, J. Hasford, P. Achenbach, P. S. G. Pre, Effects of high-dose oral insulin on immune responses in children at high risk for type 1 diabetes: the Pre-POINT randomized clinical trial. *Jama* **313**, 1541-1549 (2015).
 25. A. K. Heninger, A. Eugster, D. Kuehn, F. Buettner, M. Kuhn, A. Lindner, S. Dietz, S. Jergens, C. Wilhelm, A. Beyerlein, A. G. Ziegler, E. Bonifacio, A divergent population of autoantigen-responsive CD4(+) T cells in infants prior to beta cell autoimmunity. *Science translational medicine* **9**, (2017).
 26. C. J. Stewart, N. J. Ajami, J. L. O'Brien, D. S. Hutchinson, D. P. Smith, M. C. Wong, M. C. Ross, R. E. Lloyd, H. Doddapaneni, G. A. Metcalf, D. Muzny, R. A. Gibbs, T. Vatanen, C. Huttenhower, R. J. Xavier, M. Rewers, W. Hagopian, J. Toppari, A. G. Ziegler, J. X. She, B. Akolkar, A. Lernmark, H. Hyoty, K. Vehik, J. P. Krischer, J. F. Petrosino, Temporal development of the gut microbiome in early childhood from the TEDDY study. *Nature* **562**, 583-588 (2018).
 27. A. Sharma, X. Liu, D. Hadley, W. Hagopian, W. M. Chen, S. Onengut-Gumuscu, C. Torn, A. K. Steck, B. I. Frohnert, M. Rewers, A. G. Ziegler, A. Lernmark, J. Toppari, J. P. Krischer, B. Akolkar, S. S. Rich, J. X. She, T. S. Group, Identification of non-HLA genes associated with development of islet autoimmunity and type 1 diabetes in the prospective TEDDY cohort. *Journal of autoimmunity* **89**, 90-100 (2018).
 28. R. C. Ferreira, H. Guo, R. M. Coulson, D. J. Smyth, M. L. Pekalski, O. S. Burren, A. J. Cutler, J. D. Doecke, S. Flint, E. F. McKinney, P. A. Lyons, K. G. Smith, P. Achenbach, A. Beyerlein, D. B. Dunger, D. G. Clayton, L. S. Wicker, J. A. Todd, E. Bonifacio, C. Wallace, A. G. Ziegler, A type I

- interferon transcriptional signature precedes autoimmunity in children genetically at risk for type 1 diabetes. *Diabetes* **63**, 2538-2550 (2014).
29. A. G. Ziegler, P. Achenbach, R. Berner, K. Casteels, T. Danne, M. Gundert, J. Hasford, V. S. Hoffmann, O. Kordonouri, K. Lange, H. Elding Larsson, M. Lundgren, M. D. Snape, A. Szypowska, J. A. Todd, E. Bonifacio, G. S. g. and the, Oral insulin therapy for primary prevention of type 1 diabetes in infants with high genetic risk: the GPPAD-POInT (global platform for the prevention of autoimmune diabetes primary oral insulin trial) study protocol. *BMJ open* **9**, e028578 (2019).
 30. A. G. Davis-Richardson, A. N. Ardisson, R. Dias, V. Simell, M. T. Leonard, K. M. Kempainen, J. C. Drew, D. Schatz, M. A. Atkinson, B. Kolaczowski, J. Ilonen, M. Knip, J. Toppari, N. Nurminen, H. Hyoty, R. Veijola, T. Simell, J. Mykkanen, O. Simell, E. W. Triplett, *Bacteroides dorei* dominates gut microbiome prior to autoimmunity in Finnish children at high risk for type 1 diabetes. *Front Microbiol* **5**, 678 (2014).
 31. T. Rasmussen, E. Witso, G. Tapia, L. C. Stene, K. S. Ronningen, Self-reported lower respiratory tract infections and development of islet autoimmunity in children with the type 1 diabetes high-risk HLA genotype: the MIDIA study. *Diabetes/metabolism research and reviews* **27**, 834-837 (2011).
 32. A. Beyerlein, F. Wehweck, A. G. Ziegler, M. Pflueger, Respiratory infections in early life and the development of islet autoimmunity in children at increased type 1 diabetes risk: evidence from the BABYDIET study. *JAMA pediatrics* **167**, 800-807 (2013).
 33. M. Lonnrot, K. F. Lynch, H. Elding Larsson, A. Lernmark, M. J. Rewers, C. Torn, B. R. Burkhardt, T. Briese, W. A. Hagopian, J. X. She, O. G. Simell, J. Toppari, A. G. Ziegler, B. Akolkar, J. P. Krischer, H. Hyoty, T. S. Group, Respiratory infections are temporally associated with initiation of type 1 diabetes autoimmunity: the TEDDY study. *Diabetologia* **60**, 1931-1940 (2017).
 34. A. Beyerlein, E. Donnachie, S. Jergens, A. G. Ziegler, Infections in Early Life and Development of Type 1 Diabetes. *Jama* **315**, 1899-1901 (2016).
 35. P. Matzinger, An innate sense of danger. *Semin Immunol* **10**, 399-415 (1998).
 36. L. Wen, R. E. Ley, P. Y. Volchkov, P. B. Stranges, L. Avanesyan, A. C. Stonebraker, C. Hu, F. S. Wong, G. L. Szot, J. A. Bluestone, J. I. Gordon, A. V. Chervonsky, Innate immunity and intestinal microbiota in the development of Type 1 diabetes. *Nature* **455**, 1109-1113 (2008).
 37. J. A. Carrero, N. D. Benshoff, K. Nalley, E. R. Unanue, Type I and II Interferon Receptors Differentially Regulate Type 1 Diabetes Susceptibility in Male Versus Female NOD Mice. *Diabetes* **67**, 1830-1835 (2018).
 38. E. R. Unanue, X. Wan, The Immunoreactive Platform of the Pancreatic Islets Influences the Development of Autoreactivity. *Diabetes* **68**, 1544-1551 (2019).
 39. E. Bonifacio, M. Scirpoli, K. Kredel, M. Fuchtenbusch, A. G. Ziegler, Early autoantibody responses in prediabetes are IgG1 dominated and suggest antigen-specific regulation. *Journal of immunology* **163**, 525-532 (1999).
 40. E. Bonifacio, L. Yu, A. K. Williams, G. S. Eisenbarth, P. J. Bingley, S. M. Marcovina, K. Adler, A. G. Ziegler, P. W. Mueller, D. A. Schatz, J. P. Krischer, M. W. Steffes, B. Akolkar, Harmonization of glutamic acid decarboxylase and islet antigen-2 autoantibody assays for national institute of diabetes and digestive and kidney diseases consortia. *The Journal of clinical endocrinology and metabolism* **95**, 3360-3367 (2010).
 41. P. Achenbach, V. Lampasona, U. Landherr, K. Koczwara, S. Krause, H. Grallert, C. Winkler, M. Pfluger, T. Illig, E. Bonifacio, A. G. Ziegler, Autoantibodies to zinc transporter 8 and SLC30A8 genotype stratify type 1 diabetes risk. *Diabetologia* **52**, 1881-1888 (2009).
 42. H. E. Naserke, N. Dozio, A. G. Ziegler, E. Bonifacio, Comparison of a novel micro-assay for insulin autoantibodies with the conventional radiobinding assay. *Diabetologia* **41**, 681-683 (1998).
 43. A. J. Williams, P. J. Bingley, E. Bonifacio, J. P. Palmer, E. A. Gale, A novel micro-assay for insulin autoantibodies. *Journal of autoimmunity* **10**, 473-478 (1997).

44. K. Koczwara, D. Muller, P. Achenbach, A. G. Ziegler, E. Bonifacio, Identification of insulin autoantibodies of IgA isotype that preferentially target non-human insulin. *Clinical immunology* **124**, 77-82 (2007).
45. E. Becht, L. McInnes, J. Healy, C. A. Dutertre, I. W. H. Kwok, L. G. Ng, F. Ginhoux, E. W. Newell, Dimensionality reduction for visualizing single-cell data using UMAP. *Nat Biotechnol*, (2018).
46. F. Buettner, K. N. Natarajan, F. P. Casale, V. Proserpio, A. Scialdone, F. J. Theis, S. A. Teichmann, J. C. Marioni, O. Stegle, Computational analysis of cell-to-cell heterogeneity in single-cell RNA-sequencing data reveals hidden subpopulations of cells. *Nat Biotechnol* **33**, 155-160 (2015).
47. J. G. Caporaso, C. L. Lauber, W. A. Walters, D. Berg-Lyons, J. Huntley, N. Fierer, S. M. Owens, J. Betley, L. Fraser, M. Bauer, N. Gormley, J. A. Gilbert, G. Smith, R. Knight, Ultra-high-throughput microbial community analysis on the Illumina HiSeq and MiSeq platforms. *ISME J* **6**, 1621-1624 (2012).
48. R. C. Edgar, Search and clustering orders of magnitude faster than BLAST. *Bioinformatics* **26**, 2460-2461 (2010).
49. B. Langmead, S. L. Salzberg, Fast gapped-read alignment with Bowtie 2. *Nat Methods* **9**, 357-359 (2012).
50. W. D. Dupont, W. D. Plummer, Jr., Power and sample size calculations for studies involving linear regression. *Control Clin Trials* **19**, 589-601 (1998).

Acknowledgements

We are grateful to the participating families and children; the members of the Data Safety Monitoring Board (Chantal Mathieu, Mark Peakman, Olga Kordonouri); all members of the Pre-POInT-early study team (Stephanie Zillmer, Christian Sebelesky, Nadezhda Lagoda, Melanie Heinrich, Nicole Maison, Alevtina Durmashkina, Susanne Hivner, Fiona Fischer, Marina Holzmeier, Anita Gavrisan, Claudia Peplow, Ramona Lickert, Marlon Scholz, Yvonne Kriesen, Melanie Herbst), Annett Lindner for technical assistance in measuring gene expression, and the FACS facility of the Center for Molecular Cell Biology, TU Dresden. We thank Lilly Pharmaceuticals for donating the insulin crystals and InPhaSol, Apotheke des Universitätsklinikums Heidelberg for the production and supply of the investigational products. The study was monitored by Viktoria Janke (Münchner Studienzentrum, Technical University Munich). The study sponsor was the Technical University Munich, represented by the School of Medicine. The Pre-POINT-early clinical trial was supported by the German Center for Diabetes Research (DZD e.V.), the Juvenile Diabetes Research Foundation (JDRF grant 1-SRA-2018-546-S-B), and the Federal Ministry of Education and Research (BMBF, grant FKZ01KX1818).

Author contributions

R.A. was the clinical coordinator of the study. J.K., K.L.H., A.E., M.W., C.M., J.R., Y.F., M.H., S.M.H. were responsible for laboratory measurements. A.H. was the medical doctor and M.B. lead study nurse responsible for the clinical trial visits and contacting the families. M.P., K.H., and J.H. were the trial statisticians. A.W. supported the statistical analysis. K.L.H. and J.Z.G. analyzed the microbiome data. J.F.P. oversaw the microbiome analysis. P.A. oversaw the antibody analysis. E.B. oversaw the T cell analysis. A.G.Z. and E.B. were responsible for study design. A.G.Z. and P.A. were responsible for study conduct. E.B. and A.G.Z. were responsible for data analysis. A.G.Z. was the principal investigator of the study. A.G.Z., E.B., and R.A. drafted the manuscript. J.K., K.L.H., J.Z.G., A.E., J.F.P., and P.A. were involved in the interpretation of the results and preparation of the manuscript. All authors read and approved the final version of the manuscript.

Competing interests

A patent has been filed (PLA17A05; international patent application no: WO 2019/002364) with the title "Method for determining the risk to develop type 1 diabetes" by Helmholtz Zentrum München Deutsches Forschungszentrum für Gesundheit und Umwelt (GmbH). P.A., E.B., and A.G.Z are listed as inventors. The patent describes a method for determining genetic risk for personalized strategies to prevent type 1 diabetes, including oral immunotherapy with the insulin dose examined in the manuscript. R.A., J.K., K.L.H., M.P., J.Z.G., A.H., A.E., M.W., C.M., J.R., Y.F., M.B., A.W., M.H., K.H., S.M.H., J.H., J.P., P.A., E.B., and A.G.Z declare no other competing interests.

Data availability

All reasonable requests for raw and analyzed data and materials will be promptly reviewed by the corresponding author to determine whether the request is subject to confidentiality obligations. Any data and materials that can be shared will be available from the corresponding author on reasonable request, with appropriate additional ethical approvals, and released via a material transfer agreement.

Figure legends

Fig. 1 | Schematics of participant disposition, design, and treatment groups. **a**, Disposition of the participants. All children had a first-degree family history of type 1 diabetes. *study end point was the development of persistent antibodies to GAD, IA-2 or ZnT8. **b**, Study design and treatment groups.

Fig. 2 | Blood glucose concentration and insulin/C-peptide ratio over time. **a,b**, Blood glucose concentrations (**a**) and insulin/C-peptide ratio (**b**) measured before and after study drug intake at baseline, 3 months, and 6 months. The dashed line indicates the threshold for hypoglycemia (50 mg/dL). The conversion factor for glucose values to millimoles per liter is $\text{mg/dL} \times 0.0555$.

Fig. 3 | Responses to treatment and analysis of responses. **a,b**, Immune response to oral insulin or placebo. Kaplan–Meier analysis of a positive antibody response to insulin (**a**) and CD4⁺ T cell response to insulin (**b**) as defined by the primary outcome criteria in children who received placebo (blue line; $n = 21$) or oral insulin (red line; $n = 22$). The follow-up time is calculated from the first day of treatment. **c**, CD4⁺ T cell response to insulin calculated as the stimulation index relative to medium control at baseline (visit 1) and at 12 months (visit 5) in children who received placebo (blue circles; $n = 21$ at baseline, $n = 18$ at 12 months) or oral insulin (red circles; $n = 22$ at baseline, $n = 18$ at 12 months). **d**, Kaplan–Meier analysis of a positive antibody response to insulin as defined by the primary outcome criteria in children with the *INS* AA genotype who received placebo (blue line; $n = 11$) or oral insulin (red line; $n = 11$).

Fig. 4 | Microbiome alterations in relation to age, *INS* genotype, and treatment. **a,b**, Alpha diversity in relation to age over the time of study participation in samples from baseline ($n = 40$), 6 months ($n = 40$), and 12 months ($n = 35$). **a**, Richness (Observed OTU) and, **b**, evenness (Shannon). **c,d**, Beta diversity in relation to age over time of study participation (baseline, 6 months, 12 months). **c**, Jaccard distance, **d**, Bray-Curtis distance. Each dot represents the distance between two samples within the age range. **e-f**, Beta diversity differences by PCoA (baseline, 6 months, 12 months). **e**, Jaccard distance in children with the *INS*

AA genotype (purple dots and lines) or the *INS* AT or TT genotype (green dots and lines). **f**, Bray-Curtis distance in children with the *INS* AA genotype (purple circles and lines) or the *INS* AT or TT genotype (green circles and lines). **g**, Jaccard distance in children with the *INS* AA genotype who received placebo (blue dots and lines) or oral insulin (red dots and lines), and in children with the *INS* AT or TT genotype who received placebo (green dots and lines) or oral insulin (orange dots and lines). For treatment-related analyses, only post-baseline samples at 6 and 12 months were included. **h**, Alpha diversity (Shannon) in children with the *INS* AA genotype who had a negative ($n = 22$ samples) or positive ($n = 4$ samples) antibody response to insulin (6 months, 12 months). Unless indicated, the plots include both placebo and oral insulin-treated children.

Fig. 5 | T cell responses to insulin in relation to *INS* genotype and monocyte CD169 expression. **a,b,c,d**, Monocyte CD169 expression and CD4⁺ T cell responses to insulin over the time of study participation (baseline, 3, 6, 9, 12 months) in all study participants. **a**, Representative flow cytometry histograms of CD169 staining intensity on monocytes. Shown are three samples with low (blue; 0.6% positive cells), moderate (light blue, 21.2% positive cells) and high monocyte CD169 expression (red, 99.7% positive cells). A threshold of >5% positive monocytes was used as the threshold for defining monocyte CD169⁺ samples. **b**, Percentage of CD169⁺ cells out of CD14⁺ monocytes in relation to age over the time of study participation in children who received placebo (blue lines; $n = 21$) or oral insulin (red lines; $n = 22$). **c**, Correlation between the frequency of CD169⁺ monocytes and the frequency of intermediate monocytes in peripheral blood from children who received placebo (blue circles; $n = 102$ samples) or oral insulin (red circles; $n = 104$ samples). **d**, CD4⁺ T cell responses to insulin (SI) in samples from 20 children with the *INS* AT or TT genotype and 22 children with the *INS* AA genotype and stratified by monocyte CD169 expression as negative (CD169^{neg}, black circles; $n = 148$ samples) or positive (CD169^{pos}, green circles; $n = 58$ samples) in all study visits. **e**, The frequencies of insulin-responsive CD4⁺ T cells ($n = 1036$ cells from 22 samples) in the Th1/Th21-like cell clusters 2 and 3 (left) and the Treg-like clusters 9, 10, 11 (right) according to whether cells were from children with the *INS* AT/TT ($n = 550$ cells) or *INS* AA ($n = 486$ cells) genotype

and samples that were monocyte CD169 negative (white and dark gray bars, n = 559 cells) or positive (light gray and black bars, n = 477 cells).

High-Dose Oral Insulin in Young Children at High Risk for Type 1 Diabetes: The Pre-POInT-early

ClinicalTrials.gov preprint doi: <https://doi.org/10.1101/2020.06.12.20129189>; this version posted June 14, 2020. The copyright holder for this preprint (which was not certified by peer review) is the author/funder, who has granted medRxiv a license to display the preprint in perpetuity. It is made available under a [CC-BY-NC-ND 4.0 International license](https://creativecommons.org/licenses/by-nc-nd/4.0/).

Robin Assfalg^{1,2,3†}, Jan Knoop^{1†}, Kristi L. Hoffman^{4†}, Markus Pfirrmann⁵, Jose Maria Zapardiel-Gonzalo¹, Anna Hofelich², Anne Eugster^{6,7}, Marc Weigelt⁶, Claudia Matzke¹, Julia Reinhardt⁶, Yannick Fuchs⁶, Melanie Bunk¹, Andreas Weiss¹, Markus Hippich¹, Kathrin Halfter⁵, Stefanie M. Hauck⁸, Jörg Hasford⁵, Joseph F. Petrosino⁴, Peter Achenbach^{1,2,3}, Ezio Bonifacio^{3,6,7,9}, Anette-Gabriele Ziegler^{1,2,3*}

¹Institute of Diabetes Research, Helmholtz Zentrum München, German Research Center for Environmental Health, Munich-Neuherberg, Germany

²Forschergruppe Diabetes, Technical University Munich, at Klinikum rechts der Isar, Munich, Germany

³German Center for Diabetes Research (DZD), Munich, Germany

⁴Alkek Center for Metagenomics and Microbiome Research, Department of Molecular Virology and Microbiology, Baylor College of Medicine, One Baylor Plaza, Houston, TX, USA

⁵Institute for Medical Information Processing, Biometry, and Epidemiology, Ludwig-Maximilians-University Munich, Germany

⁶Technische Universität Dresden, Center for Regenerative Therapies Dresden, Dresden, Germany

⁷Paul Langerhans Institute Dresden of the Helmholtz Center Munich at University Hospital Carl Gustav Carus and Faculty of Medicine, TU Dresden, Germany

⁸Research Unit Protein Science, Helmholtz Zentrum München, German Research Center for Environmental Health, Munich-Neuherberg, Germany

⁹Institute for Diabetes and Obesity, Helmholtz Diabetes Center at Helmholtz Zentrum München, Munich-Neuherberg, Germany

*Corresponding author

Anette-Gabriele Ziegler, MD

Institute of Diabetes Research, Helmholtz Zentrum München,

Ingolstaedter Landstr. 1, 85764 Neuherberg, Germany

E-mail: anette-g.ziegler@helmholtz-muenchen.de

Phone: +49 89 3137 2896

Fax: +49 89 3187 3144

†Joint first authors

Table 1 | Baseline characteristics of children enrolled in the Pre-POInT-early study

medRxiv preprint doi: <https://doi.org/10.1101/2020.06.12.20129189>; this version posted June 14, 2020. The copyright holder for this preprint (which was not certified by peer review) is the author/funder, who has granted medRxiv a license to display the preprint in perpetuity. It is made available under a [CC-BY-NC-ND 4.0 International license](https://creativecommons.org/licenses/by-nc-nd/4.0/).

	Placebo	Oral Insulin
Participants, n	22	22
Girls, n (%)	10 (45.6)	7 (31.8)
Age, median (IQR); years	1.2 (0.9 - 1.9)	1.0 (0.8 - 1.4)
Weight, median (IQR); kg	10.5 (9.3 - 12.8)	9.6 (8.3 - 11.7)
Height, median (IQR); cm	78.0 (73.0 - 87.0)	74.0 (70.0 - 82.0)
First degree T1D relative (n)		
mother	8	7
father	6	6
sibling	4	5
multiplex ^a	4	4
HLA genotype (n)		
DR 3/4 DQ 8	6	5
DR 4/4 DQ 8	3	3
DR 4/x DQ 8 ^b	13	14
INS VNTR genotype (n)		
A/A	11	11
A/T	8	11
T/T	1	0

^a Multiplex indicates that a child has at least two first degree relatives with type 1 diabetes

^b x = non-DR3, non-DR4

IQR, interquartile range; T1D, type 1 diabetes; HLA, human leukocyte antigen; VNTR, variable number tandem repeat

Table 2 | Primary outcome response to insulin

medRxiv preprint doi: <https://doi.org/10.1101/2020.06.12.20129129>; this version posted June 14, 2020. The copyright holder for this preprint (which was not certified by peer review) is the author/funder, who has granted medRxiv a license to display the preprint in perpetuity. It is made available under a [CC-BY-NC-ND 4.0 International license](https://creativecommons.org/licenses/by-nc-nd/4.0/).

Treatment group	Positive antibody outcome ^a (n)	Positive CD4 ⁺ T cell outcome ^b (n)	Positive trial outcome ^c (n)
All children (n=43)			
Placebo (n=21)	7	8	14
Oral insulin (n=22)	11	4	12
<i>INS</i> AA genotype (n=22)			
Placebo (n=11)	2	5	7
Oral insulin (n=11)	8	4	9

^a A positive antibody outcome was defined as an increase in serum IgG antibodies to insulin, salivary

IgA antibodies to insulin, or two-fold increase in serum IAA.

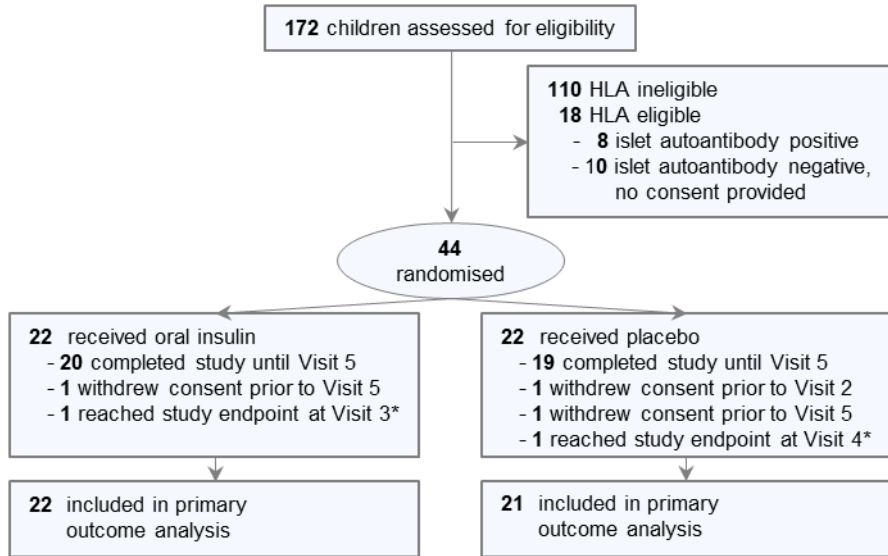
^b A positive CD4⁺ T cell outcome was defined as a CD4⁺ T cell response to insulin (SI >3) that was

more than 2-fold increased over baseline.

^c A positive trial outcome was defined as a positive antibody outcome or positive CD4⁺ T cell outcome.

Figure 1

a)



b)

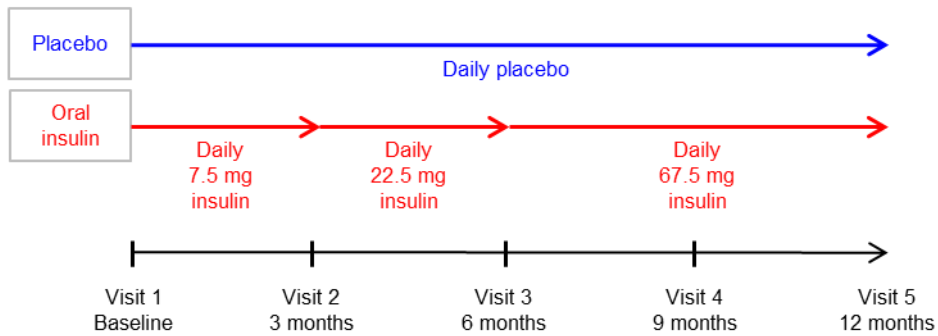


Figure 2

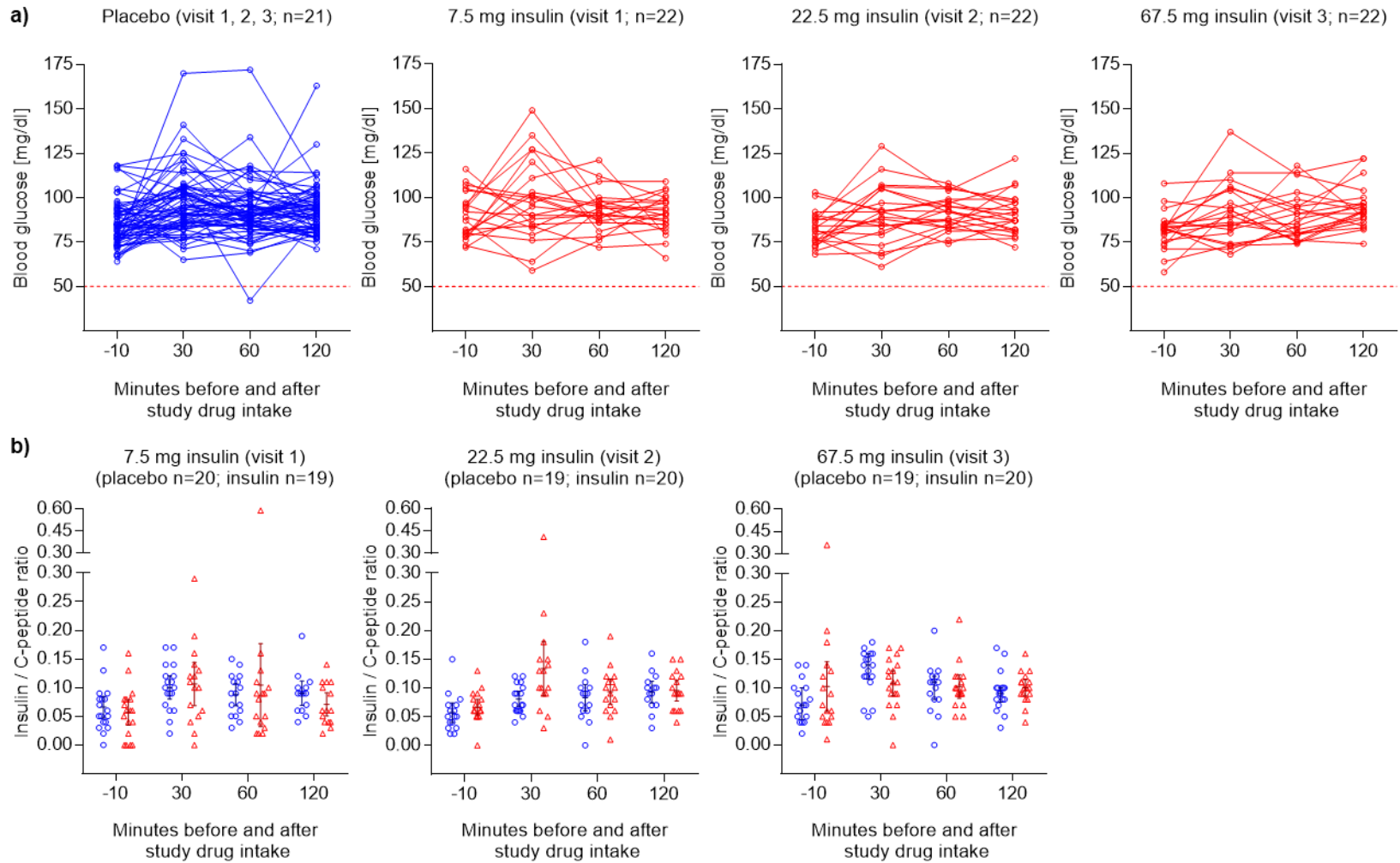


Figure 3

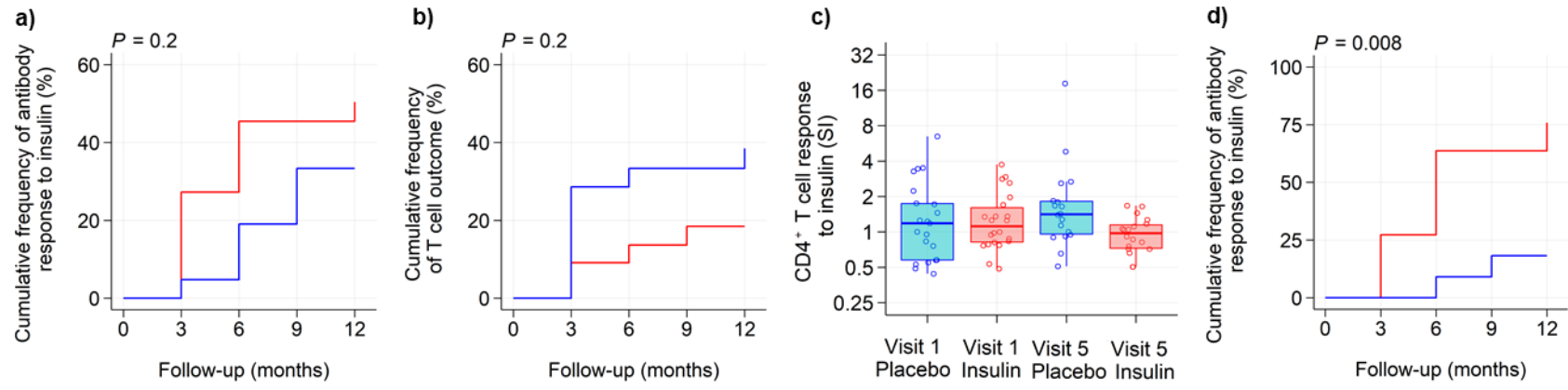


Figure 4

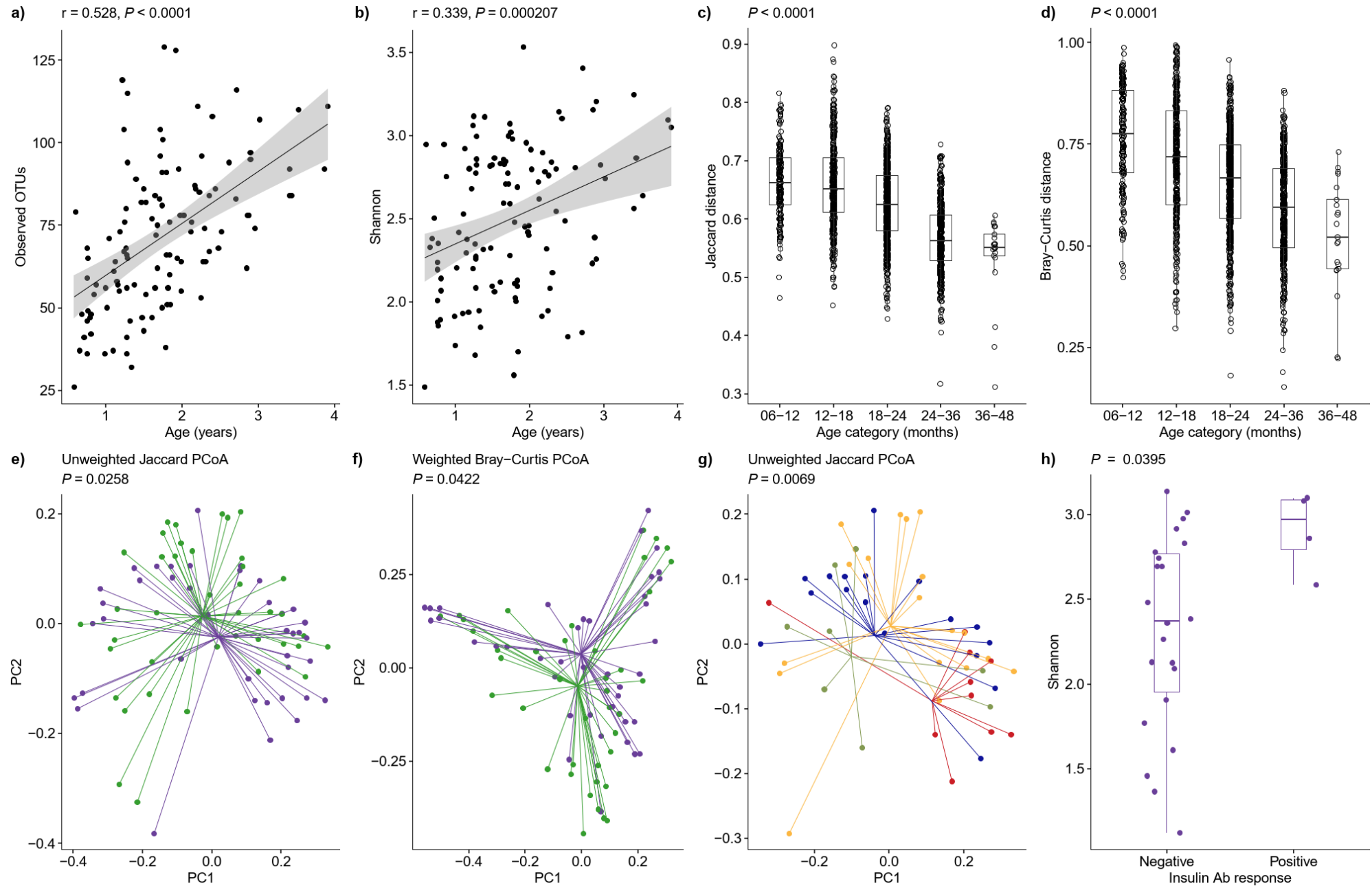


Figure 5

