

1 Research Article – Attribution: CC-BY-ND.

2

3 Reducing SARS-CoV-2 infectious spreading patterns by removing S and R  
4 compartments from SIR model equation

5

6 Charles Roberto Telles<sup>1</sup>

7 <sup>1</sup>Multisector Projects Division. Secretary of State for Education and Sport of Paraná. Água  
8 Verde Avenue, 2140. Água Verde. Curitiba - PR, 80240-900. Brazil.

9 Correspondence: [charlestelles@seed.pr.gov.br](mailto:charlestelles@seed.pr.gov.br)

10

11 **Abstract:** This research points to the asymptotic instability of SIR model and its variants to  
12 predict the behavior of SARS-CoV-2 infection spreading patterns over the population and time  
13 aspects. Mainly for the “S” and “R” terms of the equation, the predictive results fail due to  
14 confounding environment of variables that sustain the virus contagion within population  
15 complex network basis of analysis. While “S” and “R” are not homologous data of analysis,  
16 thus with improper topological metrics used in many researches, these terms leads to the  
17 asymptotic feature of “I” term as the most stable point of analysis to achieve proper predictive  
18 methods. Having in its basis of formulation the policies adopted by countries, “I” therefore  
19 presents a stable fixed point orientation in order to be used as a predictive analysis of nearby  
20 future patterns of SARS-CoV-2 infection. New metrics using a Weinbull approach for “I” are  
21 presented and fixed point orientation (sensitivity of the method) are demonstrated empirically  
22 by worldwide statistical data.

23

24 **Keywords:** COVID-19; Mathematical Modeling of Infectious Diseases; SIR Model and Variants;

25 **NOTE:** This preprint reports new research that has not been certified by peer review and should not be used to guide clinical practice.  
Policies Convergence and Stability Properties; Prediction Methods.

26        **1) INTRODUCTION**

27        The nonlinear dimensionality reduction scenario pointed in this research refers mainly to  
28        the unpredictability of epidemiologic framework of SIR (susceptible, infected, removed)  
29        stochastic or deterministic models and its variants to track the possible rate of infection of the  
30        severe acute respiratory syndrome coronavirus 2 (SARS-CoV-2) among population.

31        The starting point to the limitation of predicting future rates of transmission was  
32        importantly and deeply noticed by Manzo and Roberts *et al* [1,2] during the pandemic  
33        spreading, and also briefly described by Merchant and other authors [3,4,5,6]. These authors  
34        presented described analysis of SIR models and variants failures to achieve a good to fit  
35        predictability and sensitivity of how SARS-CoV-2 infectious spreading patterns might occurs  
36        over time (also this limitation being live verifiable by automated tools data bases available to  
37        perform it at <https://projects.fivethirtyeight.com/covid-forecasts/> [7] as exemplified in “S1  
38        figure”. Many researches based on SIR models or its variants [8], just to mention very few  
39        examples [7,9-18] are confronted with barriers found mainly on the basis of S and R  
40        compartments of SIR model due to pandemic complex scenario involving societies and SARS-  
41        CoV-2 distinct spreading patterns of infection where those two terms of equations are now  
42        suspended. “S2 figure”

43        Despite new formulations based on agent-based modeling approaches [19,20] for SARS-  
44        CoV-2 are being deeply described [21-23], the lack of fixed point orientation and asymptotic  
45        instability for S and R are still visible when we consider that an agent-based model can be  
46        under or overestimated by the type and duration of policy making worldwide [24-33] having  
47        this feature as the main attractive network interactions. This confounding environment of  
48        study presents itself for COVID-19 pandemic as an impossible methodology to be used in terms  
49        of prediction since embedded components between policies and individual behavior are  
50        presented and act as a limiting factors for the machine learning analytics for S and R as well as

51 the pre assumptions of a global homomorphism basis for the individual scale of infected  
52 person and SARS-CoV-2 behavior to population behavior.

53 Recent researches have been pointing to the robust analysis of convergence orientation  
54 within policies adoption by countries (non-pharmaceutical interventions (NPIs)) [24-33],  
55 therefore, remaining these efforts to the conclusion of component I of model as the best  
56 predictable pattern formation to be used for epidemics analytical behavior. Considering all  
57 countries epidemic behavior in convergence to the policies adopted, I component present a  
58 good performance of indicator of analysis behavior to infer with numerical results the noise [1-  
59 7] caused by some compartment components of SIR models approaches of predictability.

60 Even with high variance produced by other variables for S and R that influence the final  
61 solutions of the phenomenon, these fixed point stable parameters of I can create a confident  
62 region of statistical analysis [24-33] in terms of observation of the exponential growth of virus  
63 along days and therefore it could be more conclusive to many mathematical infectious disease  
64 models (SIR stochastic or deterministic approaches) that were created since the beginning of  
65 epidemics and later pandemics spreading.

66 Many variables that affect virus transmission rates [34], such as the type and duration of  
67 health policies adopted by each country (NPIs), health infrastructure, population genetics,  
68 human variance in terms of biological resistance (symptomatic, pre and asymptomatic cases),  
69 epidemic outbreak, infodemics worldwide (individual, community, government and media  
70 scale), globalization aspects, COVID-19 testing availability, reliability and time for results  
71 outcomes, virus mutation, and citizen adherence to social isolation and social distancing  
72 present a strong influence on the S and R behavior patterns. These confounding outcomes in  
73 each country pose a challenge to identify exact design and results of S and R patterns,  
74 therefore influencing on I compartment. However these inputs of data can create a  
75 confounding environment of study, where the mathematical simulation of SIR model finds  
76 limitations due to these non-homologous data [1-7] and consequently heteroscedasticity form

77 for data results; in this sense, it is justifiable the analysis policies adopted by countries as the  
78 most reliable, at the moment [24-33], form of reducing COVID-19 cases while no vaccine or  
79 drugs present consistent and effective use for treating the disease or stop virus propagation,  
80 that could influence directly the S and R components, thus, performing a robust prediction  
81 analysis.

82

## 83 **2) METHODOLOGY**

### 84 *2.1 The S and R constraints*

85 In many phenomena, the level of randomness of a system assumes extreme asymptotic  
86 instability characteristics for variables convergence aspects as it is observed in this pandemic  
87 patterns [7]. The confounding environment of variables involved in the pandemic spreading  
88 patterns assume distinct values for the exponential behavior of infection over time not only for  
89 the same sample of analysis (country) [7], but samples compared to each other [35,36].

90 In order to extract fixed point orientation with not homologous data involved in the  
91 epidemics cases, concerning the system global homomorphism over time, no stability pattern  
92 was found for S and R in recent researches [7-23] except for I [24-33]. This stability feature for  
93 S and R is not commonly observed in the empirical terms of the analysis for short time periods  
94 of observation while these data presented time-varying empirical data and unresolved partial  
95 differential equations on the basis of epidemics evolution and this still applies for long time  
96 periods as well [1,2,7,37]. While S and R periodic fixed point that could uncover a stability  
97 pattern formation needed for a deterministic SIR modeling are not obtained  
98 (vaccines/drugs/immunization), results, nowadays [7-23] generates probabilistic distributions  
99 permeating the system for short time lengths (local homomorphism) and long time lengths  
100 (global homomorphism) generating distinct distributions shapes and scales for each country.  
101 These set of variables that make up the system assumes different behaviors over time periods  
102 and it is not possible to determine universally that the system have a persistent not

103 embedding behavior in the way it was constantly observed in many researches using SIR and  
104 its variants models [7-23], having in the data sets the main limiting factor of analysis.

105 Now consider this premise that confounding or even spurious environment (not  
106 homologous) of variables presented by S and R compartments of SIR equation basis present  
107 high instability properties in terms of expressing convergent orientation of the global  
108 homomorphism for the infection spreading patterns, while I compartment of SIR model is  
109 asymptotic stable to the policies adopted by countries. For this point, the evolution of the  
110 disease spreading patterns need to be evaluated by the policies adopted by countries that  
111 present nowadays the most stable pattern of convergence [24-33] and therefore, most reliable  
112 and sensitive data can be used as tool for predictive analysis.

113 By excluding S and R compartments of equation and using only I variable as an indicator of  
114 infection spreading pattern, it exclude as well the limiting factors of SIR model of predictive  
115 analysis and therefore, the confounding environment of research. The compartment I  
116 resemble the growth of infection over days that depending on the policies adopted by a  
117 country it express higher or lower exponential growth behavior. If considering the exponential  
118 growth as how efficient are the policies adopted in order to reduce transmission patterns,  
119 then, we have an indicator of analysis that is pre assumed on fixed point orientation of  
120 infection spreading patterns, and hence, a valid indicator of countermeasures , monitoring  
121 aspects and expected results in a wide domain of policies to be adopted.

122 To achieve this indicator's numerical results, we need to understand time periods of  
123 infection based on cumulative cases time series data limited to the exponential behavior of  
124 infection in its mean per population samples. The mean reflects the sensitivity needed to  
125 observe the phenomenon evolution over time and how stability patterns are occurring. For  
126 this point of observation, exponential growth mean resembles exactly how the infection  
127 spreading patterns have encountered adequate policy measures or inadequate fixed point  
128 orientation of the type of policy adopted as it will be explained in the next subsection 2.2.

129        2.2 “I” of SIR model as the most reliable and sensitive indicator

130        For this analysis, it was considered the observed infected population samples  $Y =$   
131         $(Y_1, \dots, Y_n)$  of the general definition of the exponential behavior of infection as  $f(Y; \lambda) =$   
132         $\lambda e^{-\lambda Y}$  where the samples are taken from zero cases until the observed maximum exponential  
133        growth reached per population amount for each country [35-36] under the  $I'$  (new infection  
134        spreading patterns under policy measures influence) designed region of analysis.

135        In the shape behavior  $k = 1$  or  $k > 1$  of exponential irregular distributions of SARS-CoV-  
136        2 infection defined in the original form as  $\frac{dI}{dt} = \beta \frac{SI}{N} - gI$ , generically and instable [7-23] it can  
137        understood as  $I = \left(\frac{W}{\lambda}\right)^k$  (1), where the infected  $I$  is influenced by unpredictable scale of  
138        infection  $\lambda$  ( $N$ ) with inconsistent behavior of variables transition rate ( $\beta SI$ ) defined as  $W$ , and  
139        is not assumed for  $gI$  in the original form of  $R$ , that there are a normal distribution output for  
140        this virus spreading patterns, therefore it was used an unpredictable shape  $k$ , mainly defined  
141        those as components  $S$  and  $R$  of SIR model and its variants. This equation represents the  
142        presence of confounding variables environment  $W$  with unknown predictive scale of  $exp \lambda$  or  
143        maximum likelihood estimator for  $\lambda$  due to nonlinear inputs for  $S$  and  $R$ , and therefore  
144        generating nonlinear outputs  $k$  (asymptotic instability) [38] by the virus infection  $I$  over  $Y$   
145        (population). The outputs with heteroscedasticity form for  $k$  and  $\lambda$  are removed of occurring  
146        as far as the  $\kappa < 1$  Weibull parameterization aspect [39] of distribution be elected as the most  
147        reliable region of analysis (attractive orientation), thus modifying the first equation (1) to  
148         $I = \left(\frac{y}{t}\right)^{\frac{\pi}{2} < y < \pi} - \left(\frac{W}{\lambda}\right)^k$  (2), hence with the new SIR model proposition as  $I = I' - S + R$ , where  
149         $I$  is asymptotic to  $I'$ . This is a mandatory redesign since many scientific breakthroughs are  
150        pointing to policies as the best approaches to reduce COVID-19 nowadays [24-33].

151        This mean  $y$  indicated at (2) is found as a persistence diagram existence [40] by mapping  
152        each adjacent pair to the point  $(f(Y), f(t))$  minimum and maximum observations, resulting in  
153        critical points of  $Y$  function over time  $t$  in not adjacent form, thus expressing random critical

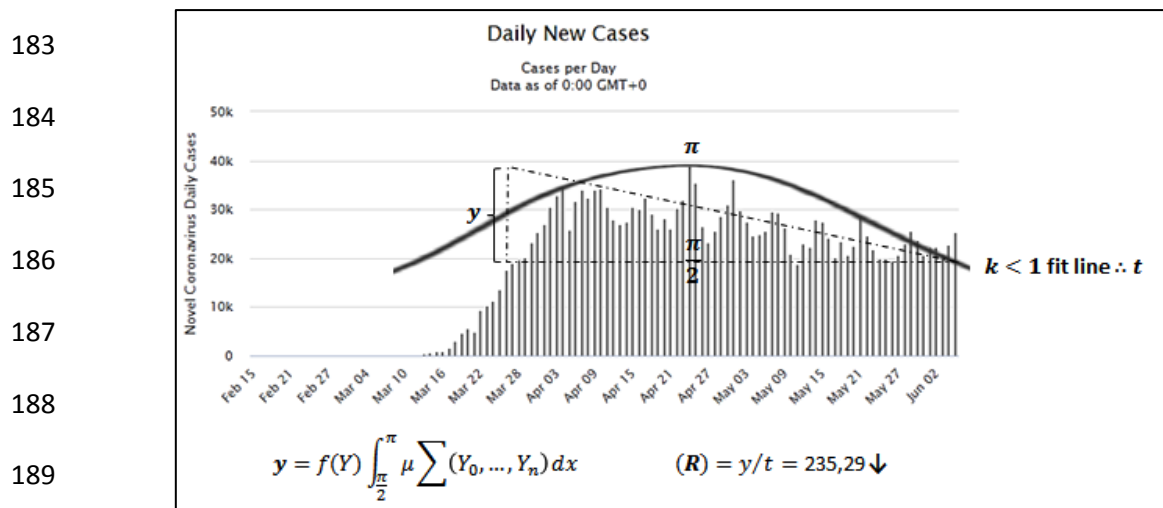
154 values defined by  $I = \left(\frac{W}{\lambda}\right)^k$  in the original form of observation of the event. But since we need  
155 to filter  $f(Y) - f(t)$  unstable critical points (oscillatory instability of S and R) to an attractive  
156 minimum behavior for the distribution functions  $F$  for S and R towards I, as  $\lim_{n \rightarrow \infty} F_{S_n}(Y, t) +$   
157  $F_{R_n}(Y, t) = F_{I_n}(Y, t)$ , therefore, the redefinition of mean  $y$  over time is a necessary condition.

158 At this point, by rejecting the persistence diagram unstable critical points generated, a  
159 local minimum of the event as an average mean can be obtained by having  $y$  with the higher  
160 number of samples  $Y$  that finds a condition roughly described in the nonlinear oscillations  
161 within the exponential growth epidemic behavior of event as limited between local maximum  
162 growth defined by  $\pi$  by its half curvature oscillations  $\frac{\pi}{2}$  as a local minimum being non periodic  
163  $(2\pi)$  due to  $\kappa < 1$ . Therefore  $y$  assumes the desired oscillations samples and region condition  
164 like  $\frac{\pi}{2} < y < \pi$  where persistent homology can be found for  $t \therefore \kappa < 1$  to be situated in the  
165 oscillations pairing region of  $\sin(\pi) = 1$  and  $\cos(\pi) = 0$  for  $y$  desired coordinates  
166  $(f(Y), f(t))$  of stability with  $t + 1$  as  $y = f(Y) \int_{\frac{\pi}{2}}^{\pi} \mu \sum(Y_0, \dots, Y_n) dx$ , thus assuming the shape  
167 and limit to  $\kappa < 1$ . Then concerning time lengths of samples, it is designed as  $t(x + 1) \leq$   
168  $f(Y) \mu \sum(Y_0, \dots, Y_n) dx$  starting from  $t_0, \dots, t_n \leq \sin(y)$  results in the desired data distribution  
169 with a conditional shape of Weibull parameterization  $\kappa < 1$  for the analysis, therefore  
170 rejecting any critical value beyond  $\cos(\pi) = 0$  and under  $\sin(\pi) = 1$ .

171 In this simple and overall form, redefining the mean shape for the infection spreading  
172 patterns of  $I'$  approximately as  $y = 1/\lambda$  under  $\kappa < 1$ , the numerical representation of the  
173 scale considering a global homomorphism of the persistent homology [40] observed can be  
174 limited by the highest number of scales that fitted best by the observed exponential mean  $y$   
175 scale of  $I'$  until it reaches a desired form like  $y = Y$ .

176 This modeling is represented at figure 1 for United States analysis on 02, Jun, 2020 [35].  
177 At this point the days counting forward this condition will be rejected to extract the  
178 exponential infection spreading rate in the formula  $rate(R) = y/t$  and  $t = \kappa$  only in the

179 desired event expression. This approach can be more sensitive in terms of time overview of  
 180 the disease and its potential to infect as time passes. This sensitivity is much more confident  
 181 for predictions due to the exponential behavior of infections at community phases of infection  
 182 spreading patterns.



190 **Figure 1.** Exponential infection spreading rate for United States. ( $R$ ) analysis obtained for 02 Jun, 2020. Note that  
 191 persistent homology is now showed in the figure. However it can be induced by hypotenuse angle proximity. Data  
 192 source: Worldometer.

194 Now considering the critical points of  $I$  found per population  $Y$  margins that infection has  
 195 reached, it is counted as  $I'$  the positive exponential growth in the mean  $y$  found at the region  
 196 limited to  $\frac{\pi}{2} < y < \pi$  for first, second or other waves of infection, counting for this second or  
 197 other period with cumulative time since outbreak (but not cumulative population ratio found  
 198 for the first wave of infection or the previous ones).

199 At Table 1, for the second column, it presents the growth of infection (minimum values)  
 200 per amount of population  $Y$  observed for a given sample (country) by the empirical  
 201 observations, therefore, in the proposition  $I = I' - S + R$ , it gives the values of the  
 202 exponential growth mean reached in the  $I'$  shape in average days peaks of infection since the  
 203 outbreak until the condition  $\kappa < 1$  and therefore not counting as a mean  $y$  higher values than  
 204 the ones found at  $I' - S + R$ . The third column " $t$ " presents how much days the infection



205 presented an exponential growth with a mean reached. And finally the fourth column ( $R$ )  
 206 approach have similarities with SIR models, but it is based on distinct aspects of analysis of  
 207 variables  $S$  and  $R$  by removing these variables from the formula and focusing mainly in the  $I$   
 208 variable defined by Weibull parameterizations and exponential desired distributions. This  
 209 design of analysis is very relevant due to instability aspects of SIR analysis taken since outbreak  
 210 of disease, mainly existing in the  $S$  and  $R$  variables due infodemics, type of analysis conducted  
 211 for this research (the apparent lack of overall topological homology of data) and other  
 212 nonlinear aspects of the new coronavirus 2 disease. For this reason, the proposed method of  
 213 analysis considers only the infectious disease aspect of evolution of cases rather than pre  
 214 assuming full immunity or deterministic models for population behavior that is in this case one  
 215 of the most influencing forms of keeping the virus active in its propagation.

216

217 **Table 1. COVID-19 exponential growing patterns per population and time period by country/region.**

Country	$y$	$t$	$R$ on 01 May
Worldwide	60.000	99	606,06↓
Europe	30.000	91	329,67↓
Italy	4.000	51	78,43=
South Korea	250	20	12,5=
China	1.500	28	53,57=
Iran	2.000	46	43,47=
Spain	5.000	55	90,90↓
France	4.000	45	88,88↓
United States	30.000	53	566,03↑
Brazil	5.000	51	98,03↑
Germany	4.000	41	97,56↓
Russia	5.000	46	108,69↑
United Kingdom	5.000	58	86,20↑
Singapore	500	57	8,77↑
Portugal	500	49	10,20↓
India	1.000	58	17,24↑
Canada	1.500	48	31,25↑
Japan	500	67	7,46↑
Sweden	500	58	8,62↑
Argentina	100	57	1,75↓
Chile	500	52	9,61↑
Saudi Arabia	1.000	54	18,51↑
United Arab Emirates	400	70	5,71↓
Egypt	200	62	3,22↑
Pakistan	500	53	9,43↑

218

The  $y$  and  $t$  data are retrieved for 01 May, 2020. Data source: Worldometer.

219           What are the main frontiers to achieve a stability behavior concerning data science  
220 and big data in order to build a robust performance for predictive and behavior analytics of  
221 complex events of COVID-19 spreading patterns of infection? Based on this introductory  
222 statement we have the following points to address:

223

224       *a. Micro-processes under a given assumed stability;*

225           That in this case assumes a monotonically increasing exponential behavior for I  
226 component even with the not homologous data presented in the complex event as S and  
227 R and therefore the indicator is limited directly to the policies adopted by countries as the  
228 main stability point of analysis for  $\kappa < 1$ . At this point, the micro-processes for S and R are  
229 the main constraint for the SIR model traditional application in the case of SARS-CoV-2  
230 modeling equation.

231

232       *b. Time and machine learning/mathematical simulations experience;*

233           Defined as a local homomorphism of solutions for S and R, the SIR predictions  
234 performed until now fail to assume a global homomorphism for all epidemics duration  
235 and its behavior for each sample (country) analyzed. This is caused mainly due to  
236 observations of short time lengths of the infection event in which possibly the  
237 confounding variable's environment of S and R aren't the kind of data in empirical terms  
238 that gives origin to recurrent plots or defined phases spaces, and also not being possible  
239 to apply this same results to other sample in terms of size, time and spreading patterns.  
240 Considering I as the unique feature, stable analysis and phase space can be extracted  
241 among samples and mainly having all those comparisons based on the same root of  
242 observation parameters, a feature that makes the analysis robust and predictive as far as  
243 observations are taken from empirical data at specific shape and scale distribution of the  
244 event.

245 *c. Empirical observations and data constraint (the lack of persistent homology);*

246 To perform a reliable analysis on such set of data for S and R one would have to correct  
247 for multiple factors for each country, such as phase of the epidemic, time from the virus  
248 introduction into population to start of mass testing campaigns, case definition, number  
249 of tests performed per million population, sensitivity of tests used, testing criteria,  
250 population compliance, testing availability in different regions of a country, estimated  
251 ratio of detected and undetected cases, etc. This confounding environment of analysis for  
252 each country assume high dimensional order and nonlinear oscillations together with  
253 item 1, 2 and 4 due to complex scenario each country has in its social, economic, political,  
254 scientific and cultural aspects and are considered as the main cause for S and R failures  
255 rates of predictive analysis of SARS-CoV-2 with SIR deterministic or stochastic models  
256 variants.

257

258 *d. Privacy and internet of things.*

259 Concerning mobile apps and person-to-person surveys to detect SARS-CoV-2 features,  
260 many statistical results present possibly false information, subjectivity of data and limited  
261 scope of analysis due to ethical or policies implications. For these limiting points the data  
262 sets used to estimate values for S and R can challenge serious flaws and inconsistency.  
263 These factors sum up to the item 3 constraints and it was not addressed further in this  
264 research, however this was considered as a consistent point of constraint for S and R data  
265 retrieved worldwide [41,42].

266

267 Based on a local homomorphism existent for  $\kappa < 1$  shape based on  $(R) = y/t$  scale of  
268 distribution, a consistent fixed point orientation can be observed in these results section,  
269 therefore confirming the use of the indicator as a predictive tool designed for policies  
270 measures adopted to reduce COVID-19 infection spreading patterns.

271 **3) RESULTS**

272 *3.1 A predictive tool for policy measures*

273 How can governments precisely state “let’s keep the policies as they are or let’s adopt  
274 new ones or change the old ones scope or criteria?”. This answer also addresses to the  
275 question: how much sensitive of data retrieved and fixed point orientation have the policies  
276 adopted among countries for predictive analysis?

277 Now after explaining the methodology used, Table 2 presents, from the epidemics  
278 outbreaks until days considered as 7 and 13 April, 7 days were the amount of time is taken and  
279 the behavior of infection obtained for prediction and sensitivity, indicated by arrows, can be  
280 with high confidence in order to make predictions as it can be observed by differences in the  
281 nearby future. In the 25 samples analyzed, 12 presented (orange color) different behavior of  
282 infection spreading patterns while 13 expressed a constant evolution of infection that  
283 indicates also a positive analysis for predictive statistics even with low amount of time  
284 considered (7 days sensitivity and prediction).

285

286 **Table 2. Sensitivity of time and exponential spreading patterns confronted with policy measures adopted by**

287 **countries.**

Country	R on 7 April	R on 13 April
Worldwide	675,67↑	886,07↑
Europe	410,95↑	379,74↓
Italy	90,90↓	78,43↓
South Korea	12,5↓	12,5=
China	53,57↓	53,57=
Iran	44,44↑	43,47↓
Spain	131,57↑	121,95↓
France	138,88↑	100↓
United States	625↑	540,54↓
Brazil	25↑	28,57↑
Germany	105,26↑	100↓
Russia	15,62↑	27,02↑
United Kingdom	64,51↑	69,64↑
Singapore	0,96↑	1,75↑
Portugal	15,15↑	13,15↓
India	8,33↑	9,43↑
Canada	27,77↑	24,39↓
Japan	3,92↑	7,14↑
Sweden	5,71↑	0,65↓
Argentina	1,51↑	2,56↑
Chile	10↑	8,33↓

Saudi Arabia	3↑	4,16↑
United Arab Emirates	4,34↑	5,76↑
Egypt	1,31↑	2,27↑
Pakistan	3,44↑	5,71↑

Data source: Worldometer.

288

289

290 While in 7 days of predicting analysis, several countries implemented new policies [43,44]  
 291 measures to reduce SARS-CoV-2 spreading patterns and prediction was affected highly by this  
 292 measures. Note that no specification of policy measures was provided. The objective of this  
 293 research is not to determine which measure gives the best result, but just to provide the  
 294 observation that policies do have influence on the COVID-19 spreading patterns. For further  
 295 interests on the type, duration and efficacy of measures adopted by countries, refer to [24-33].

296 Table 3 presents, from the epidemics outbreaks until days considered as 13 April to 01  
 297 May, counting for higher time period of analysis. Only 7 days more were added on 13 April  
 298 results since 07 April when policy measures were vastly started or in course among countries.  
 299 For this new predictive results based on policies influences adopted, for 19 days in future, the  
 300 behavior of infection obtained for prediction on 13 May, indicated by arrows, were modified  
 301 on 01 May. In this period, the same as happen before, new policies measures were adopted or  
 302 in course by countries [43,44], thus influencing the predictive/sensitivity analysis. In the 25  
 303 samples analyzed, 9 presented (orange color) different behavior of infection spreading  
 304 patterns while 16 expressed a constant evolution of infection that indicates also a positive  
 305 analysis for predictive statistics even with low amount of time considered (19 days sensitivity  
 306 and prediction).

307

308 **Table 3. Sensitivity of time and exponential spreading patterns confronted with policy measures adopted by**  
 309 **countries.**

Country	R on 13 April	R on 01 May
Worldwide	886,07↑	606,06↓
Europe	379,74↓	329,67↓
Italy	78,43↓	78,43=
South Korea	12,5=	12,5=
China	53,57=	53,57=

Iran	43,47↓	43,47=
Spain	121,95↓	90,90↓
France	100↓	88,88↓
United States	540,54↓	566,03↑
Brazil	28,57↑	98,03↑
Germany	100↓	97,56↓
Russia	27,02↑	108,69↑
United Kingdom	69,64↑	86,20↑
Singapore	1,75↑	8,77↑
Portugal	13,15↓	10,20↓
India	9,43↑	17,24↑
Canada	24,39↓	31,25↑
Japan	7,14↑	7,46↑
Sweden	0,65↓	8,62↑
Argentina	2,56↑	1,75↓
Chile	8,33↓	9,61↑
Saudi Arabia	4,16↑	18,51↑
United Arab Emirates	5,76↑	5,71↓
Egypt	2,27↑	3,22↑
Pakistan	5,71↑	9,43↑

Data source: Worldometer.

310

311

312 It is possible to observe that countries who didn't change its policies measures [43,44]  
 313 didn't express modifications obtained by this predictive method. This happened even for  
 314 countries who already understood its data as a good fit to reduce SARS-CoV-2 spreading  
 315 patterns as well as countries that didn't make any modification due to countries personal  
 316 reasons.

317 Now from epidemics outbreaks until 02 June that gives 33 more days of the event  
 318 evolution at Table 4 having as parameter the data of 01 May, even with oscillatory dynamics of  
 319 policies adopted, one might assume that as far as policies don't change anymore, the  
 320 predictive method will point to a very confident method to predict nearby future analysis of  
 321 infection spreading patterns. For this concern, since sensitivity is very connected to policies,  
 322 the predictive power can be evaluated for any given future time of analysis by it. In this form,  
 323 this research states that no matter how S and R will affect the event, the convergent attraction  
 324 of policies can provide robust analysis of infection spreading patterns in terms of prediction  
 325 and sensitivity.

326

327 **Table 4. Sensitivity of time and exponential spreading patterns confronted with policy measures adopted by**  
 328 **countries.**

Country	R on 01 May	R on 02 June
Worldwide	606,06↓	572,51↓
Europe	329,67↓	162,6↓
Italy	78,43=	78,43=
South Korea	12,5=	0,09↓
China	53,57=	53,57=
Iran	43,47=	25,64↓
Spain	90,90↓	90,90=
France	88,88↓	3,89↓
United States	566,03↑	235,29↓
Brazil	98,03↑	180,72↑
Germany	97,56↓	2,73↓
Russia	108,69↑	96,15↓
United Kingdom	86,20↑	22,22↓
Singapore	8,77↑	5,61↓
Portugal	10,20↓	1,85↓
India	17,24↑	64,44↑
Canada	31,25↑	9,37↓
Japan	7,46↑	0,30↓
Sweden	8,62↑	6,66↓
Argentina	1,75↓	6,17↑
Chile	9,61↑	41,66↑
Saudi Arabia	18,51↑	17,44↓
United Arab Emirates	5,71↓	5,39↓
Egypt	3,22↑	7,44↑
Pakistan	9,43↑	23,52↑

Data source: Worldometer.

329

330

331 Now from 01 May to 02 June, in the 25 samples analyzed, 11 presented different behavior  
 332 (orange color) of infection spreading patterns while 14 expressed a constant evolution of  
 333 infection that indicates also a positive analysis for predictive statistics even with high amount  
 334 of time considered (33 days sensitivity and prediction).

335 By performing these examples of analysis, it can be observed that prediction is highly  
 336 associated with the policies adopted by countries, and therefore the predictive power is  
 337 intrinsically associated with the sensitivity power of analysis over time.

338 One important observation of the method proposed given by the author due to his  
 339 nationality, is about Brazil COVID-19 spreading patterns where since beginning of local  
 340 epidemics, each state adopted distinct measures without a federal whole pack of actions to be  
 341 performed for public policies (health and economics). This initial divergence among states

342 provided the infection spreading patterns to be in a heteroscedasticity form for statistical  
343 descriptive data. The false feeling that some states were more infected than others and mainly  
344 empirical based methods used to start policies interventions made the exponential power of  
345 infection grow beyond any type of scientific study conducted to predict the infection spreading  
346 patterns. This was mainly caused by the observations of this research, due to S and R  
347 parameters of analysis and constraints. Also, if observing data of tables 1-4 for Brazil, you are  
348 going to see that policies used by country as a whole didn't find any other instability aspect for  
349 COVID-19 reduction. These results for the country Brazil, resembles exactly what happened  
350 here along the time: no default policies for the whole country, several changes in policies  
351 adopted by states individually (trying to find what gives the best results), no use or belief in  
352 scientific data and very poor population compliance/confidence to measures randomly taken.

353 That's the author analysis of his country of origin based on political scenario of country  
354 and indicator metrics obtained.

355

#### 356 **4) DISCUSSION**

357 It is not needed that all countries present the same date of implementing measures to  
358 prove the article findings since distinct phases of epidemics among countries and regarding  
359 policies measures starting date are not a deterministic model in real life, but both data present  
360 high asymptotic stability, therefore, being predictable and observable by the proposed  
361 mathematical modeling.

362 Another point for removing S and R terms of SIR model equation is related to table's data  
363 and random dates that refer to different epidemic phases of data collection for each country.  
364 These distinct phases are important to be considered together in any sample collection due to  
365 need of a methodology that can extract behavior of the disease in the not optimal evolution  
366 (SIR deterministic approaches) of the virus infection and policies adopted by countries, hence,  
367 revealing in the complex scenario the disease dynamics under a confounding environment of



368 data with more sensitivity and possible rapid response of countries policies. The homology line  
369 of research conducted here applies only for the first exponential maximum increase of the  
370 phenomena and it can be tracked topologically by the policies adopted by each country over  
371 time, even excluding any other confounding variable existent in the event, since it will not  
372 affect the overall convergence of the phenomena.

373 All the variables that influence COVID-19 spreading patterns is exactly what this article  
374 points to be observed as they are confounding and it is needed to extract an indicator that can  
375 point to the high asymptotic effect of the phenomena, that is in this case the policies adopted.  
376 The empirical results from China and South Korea are the main evidence on it. Considering it  
377 there is not reason to correct these confounding factors with numerical results in the  
378 topological field by now since we have strong indicative that all this random data influence can  
379 be asymptotically unstable (not convergent) to the policy measures.

380 Following these statements, and by these data being not homologous, the analysis for this  
381 relations lead to high degree of heteroscedasticity that can be observed not in terms of  
382 variance analysis or linear regression analysis but a general overview of distribution shapes  
383 and scales with Weibull parameterization in order to analyze only the exponential behavior  
384 related to the formation of normal distributions phase or tendencies at marginal measures. In  
385 this way, both homologous and not homologous topologies are pre assumed qualitatively  
386 (QDE) for a preexistence of fixed point orientation of the event. In this way, the method  
387 proposed reveals patterns of homology formation in the invisible condition of detecting each  
388 variable's coupling behavior effects.

389 The homology is obtained by considering as stated in the Weibull approach by excluding  
390 any data related to the minimum value of the exponential curve before a second wave is  
391 observed. One other advantage of the method is that there is no need to describe the event in  
392 its full behavior (very long time lengths) as well as wait for longer time series to be able to  
393 make predictions about how policies influence the event. This was not proven by numerical

394 results on the algebraic topology field, but it was presented by the numerical results towards  
395 the probabilistic distributions observed in the data that reflects, among other countries, based  
396 on China and South Korea margins, the exact point of homology among the confounding  
397 variables from the beginning of the outbreak until the mean point of the exponential behavior  
398 of the event over time.

399

## 400 **5) CONCLUSION**

401 A method to be used as qualitative indicator of epidemics spreading patterns is offered  
402 and it is based on how policy measures influence the growing of exponential curve. Formula,  
403 results and discussion of topological framework is briefly presented in order to sustain the  
404 robustness of mathematical and empirical framework of analysis. This approach is mainly  
405 addressed to government's interventions on public health measures against COVID-19 and also  
406 for researches to analyze independently for your own country how policies affected the  
407 evolution of virus spreading patterns.

408 The results obtained showed that the indicator can be valid as a predictive method of  
409 analysis in terms of identifying how the epidemics are behaving over time being influenced by  
410 public health policies. The method used is high sensible to policies adopted by countries having  
411 a confidence power relative to how a country respond to epidemic in terms of these policies.

412 Strategic policy interventions can be proposed while events takes place over time as well  
413 as evaluations of how policies already adopted can be failing to achieve the desired results.  
414 This feature can be used both for country or regions/states/localities within a country. Policy  
415 measures are considered nowadays as the best optimal solution to contain COVID-19  
416 spreading patterns towards exponential growing aspect.

417 The COVID-19 event was considered from a theoretical viewpoint using the qualitative  
418 theory of differential equations (QED) framework to help to understand how the input of many  
419 variables and output results in terms of convergence and stability aspects of policies adopted

420 by each country, could point to any possible confounding data related to empirical evidences  
421 of countries divergences visible through cumulative daily new cases and time for an  
422 exponential growing behavior of infection.

423 The authors also invite/suggests other researchers to perform the same analysis for their  
424 own country in other publications. Observe in details how indicator behaves and at what time  
425 (date) policies were adopted, as well as other aspects such as integrity of the measure, regions  
426 that adopted it, population compliance, duration and other strong variables influence like  
427 economics aspects. A machine learning tool could be used to track these results as an  
428 informative graph per country/region/city/public area/local building with specific range of  
429 time crossing the data of policy adopted/modified by one week, two weeks, one month and  
430 finally three months. That could be a good start to help governments or other interested  
431 people to retrieve predictive analysis and strategic plans to achieve COVID-19 spreading  
432 patterns reduction.

433

434 **Acknowledgments:** I would like to thank all journals that have made COVID-19 research free to read, responding  
435 the call to action from the Office of Science and Technology Policy (OSTP) and other governments. This policy action  
436 was vital for researchers around the world to publish new discoveries about the virus.

437

## 438 REFERENCES

- 439 1. Manzo G. Complex Social Networks are Missing in the Dominant COVID-19 Epidemic Models. *Sociologica*. 2020  
440 May 20;14(1):31-49.
- 441 2. Roberts M, Andreasen V, Lloyd A, Pellis L. Nine challenges for deterministic epidemic models. *Epidemics*. 2015  
442 Mar 1;10:49-53.
- 443 3. Merchant H. CoViD-19 may not end as predicted by the SIR model. *The BMJ*. 2020 May 2;369:m1567-rr.
- 444 4. Adam, D. The Simulations Driving the World's Response to COVID-19. How Epidemiologists Rushed to Model the  
445 Coronavirus Pandemic. *Nature*, 580, 316–318. <https://doi.org/10.1038/d41586-020-01003-6>. 2020.
- 446 5. Luo J. Predictive Monitoring of COVID-19. SUTD Data-Driven Innovation Lab. 2020.

- 447 6. Koerth M, Bronner L, Mithani J. Why It's So Freaking Hard To Make A Good COVID-19 Model. Abc News:  
448 FiveThirtyEight. Retrieved from: [https://fivethirtyeight.com/features/why-its-so-freaking-hard-to-make-a-good-](https://fivethirtyeight.com/features/why-its-so-freaking-hard-to-make-a-good-covid-19-model/)  
449 [covid-19-model/](https://fivethirtyeight.com/features/why-its-so-freaking-hard-to-make-a-good-covid-19-model/). 2020 Mar 31.
- 450 7. Best R, Boice J. Where The Latest COVID-19 Models Think We're Headed — And Why They Disagree. Abc News:  
451 FiveThirtyEight. Retrieved from: <https://projects.fivethirtyeight.com/covid-forecasts/>. 2020 Jun 11.
- 452 8. Liu Y, Gayle AA, Wilder-Smith A, Rocklöv J. The reproductive number of COVID-19 is higher compared to SARS  
453 coronavirus. *Journal of travel medicine*. 2020 Mar 13.
- 454 9. Wu JT, Leung K, Leung GM. Nowcasting and forecasting the potential domestic and international spread of the  
455 2019-nCoV outbreak originating in Wuhan, China: a modelling study. *The Lancet* 395, 689–697.  
456 doi:10.1016/s0140-6736(20)30260-9. 2020.
- 457 10. Liu T, Hu J, Xiao J, He G, Kang M, Rong Z, Lin L, Zhong H, Huang Q, Deng A, Zeng W. Time-varying transmission  
458 dynamics of Novel Coronavirus Pneumonia in China. *bioRxiv*. 2020 Jan 1.
- 459 11. Li Q, Guan X, Wu P, Wang X, Zhou L, Tong Y, Ren R, Leung KS, Lau EH, Wong JY, Xing X. Early transmission  
460 dynamics in Wuhan, China, of novel coronavirus–infected pneumonia. *New England Journal of Medicine*. 2020  
461 Jan 29.
- 462 12. GU C, Jiang W, Zhao T, Zheng B. 2020 Mathematical Recommendations to Fight Against COVID-19. *SSRN*  
463 *Electronic Journal* doi:10.2139/ssrn.3551006.
- 464 13. Wang L, Wu JT. 2018 Characterizing the dynamics underlying global spread of epidemics. *Nature*  
465 *Communications* 9. doi:10.1038/s41467-017-02344-z.
- 466 14. Roques L, Klein EK, Papaix J, Sar A, Soubeyrand S. Using early data to estimate the actual infection fatality ratio  
467 from COVID-19 in France. *Biology*. 2020 May;9(5):97.
- 468 15. Tang B, Scarabel F, Bragazzi NL, McCarthy Z, Glazer M, Xiao Y, Heffernan JM, Asgary A, Ogden NH, Wu J. De-  
469 Escalation by Reversing the Escalation with a Stronger Synergistic Package of Contact Tracing, Quarantine,  
470 Isolation and Personal Protection: Feasibility of Preventing a COVID-19 Rebound in Ontario, Canada, as a Case  
471 Study. *Biology*. 2020 May;9(5):100.
- 472 16. Griette, Quentin, and Zhihua Liu. "Estimating the last day for COVID-19 outbreak in mainland China." *medRxiv*  
473 (2020).
- 474 17. Liu Z, Magal P, Seydi O, Webb G. A model to predict COVID-19 epidemics with applications to South Korea, Italy,  
475 and Spain. *SIAM News* (to appear). 2020.
- 476 18. Cotta, Renato Machado, Carolina Palma Naveira-Cotta, and P. Magal. "Modelling the COVID-19 epidemics in  
477 Brasil: Parametric identification and public health measures influence." *medRxiv* (2020).

- 478 19. Chen D. Modeling the spread of infectious diseases: A review. Analyzing and modeling spatial and temporal  
479 dynamics of infectious diseases. 2014 Oct 20:19-42.
- 480 20. Jackson MO, López-Pintado D. Diffusion and contagion in networks with heterogeneous agents and homophily.  
481 Network Science. 2013 Apr;1(1):49-67.
- 482 21. Chang SL, Harding N, Zachreson C, Cliff OM, Prokopenko M. Modelling transmission and control of the COVID-19  
483 pandemic in Australia. arXiv preprint arXiv:2003.10218. 2020 Mar 23.
- 484 22. Rothan HA, Byrareddy SN. The epidemiology and pathogenesis of coronavirus disease (COVID-19) outbreak.  
485 Journal of autoimmunity. 2020 Feb 26:102433.
- 486 23. Vermeulen, Ben, Andreas Pyka, and Matthias Müller. "An agent-based policy laboratory for COVID-19  
487 containment strategies." (2020).
- 488 24. Tuite AR, Fisman DN. 2020 Reporting, Epidemic Growth, and Reproduction Numbers for the 2019 Novel  
489 Coronavirus (2019-nCoV) Epidemic. Annals of Internal Medicine doi:10.7326/m20-0358.
- 490 25. Lipsitch M. 2003 Transmission Dynamics and Control of Severe Acute Respiratory Syndrome. Science 300, 1966–  
491 1970. doi:10.1126/science.1086616.
- 492 26. Ebrahim SH, Memish ZA. 2020 COVID-19 – the role of mass gatherings. Travel Medicine and Infectious Disease,  
493 101617. doi:10.1016/j.tmaid.2020.101617.
- 494 27. Alves TH, de Souza TA, de Almeida Silva S, Ramos NA, de Oliveira SV. Underreporting of death by COVID-19 in  
495 Brazil's second most populous state. medRxiv. 2020 Jan 1.
- 496 28. Lopes H, Middleton J. ASPHER statement on the strategic use of masks. ASPHER (2020).  
497 DOI:10.13140/RG.2.2.25528.70403.
- 498 29. Telles, C. R. (2020). Influence of countries adopted policies for COVID-19 reduction under the view of the  
499 airborne transmission framework. medRxiv.
- 500 30. Block P, Hoffman M, Raabe IJ, Dowd JB, Rahal C, Kashyap R, Mills MC. Social network-based distancing strategies  
501 to flatten the COVID-19 curve in a post-lockdown world. Nature Human Behaviour. 2020 Jun 4:1-9.
- 502 31. Romano A, Sotis C, Dominioni G, Guidi S. Covid-19 data: The logarithmic scale misinforms the public and affects  
503 policy preferences. Available at SSRN 3588511. 2020 Apr 29.
- 504 32. Ferguson N, Laydon D, Nedjati Gilani G, Imai N, Ainslie K, Baguelin M, Bhatia S, Boonyasiri A, Cucunuba Perez ZU,  
505 Cuomo-Dannenburg G, Dighe A. Report 9: Impact of non-pharmaceutical interventions (NPIs) to reduce  
506 COVID19 mortality and healthcare demand.
- 507 33. Chu DK, Akl EA, Duda S, Solo K, Yaacoub S, Schünemann HJ, El-harakeh A, Bognanni A, Lotfi T, Loeb M, Hajizadeh  
508 A. Physical distancing, face masks, and eye protection to prevent person-to-person transmission of SARS-CoV-2  
509 and COVID-19: a systematic review and meta-analysis. The Lancet. 2020 Jun 1.

- 510 34. World Health Organization (WHO). Coronavirus disease 2019 (COVID-19) situation reports, June 10, 2020.  
511 Retrieved from: <https://www.who.int/emergencies/diseases/novel-coronavirus-2019/situation-reports>.
- 512 35. Worldometer. COVID-19 Coronavirus pandemic. World Data, June 10, 2020. Retrieved from:  
513 <https://www.worldometers.info/coronavirus/>.
- 514 36. John Hopkins University. Coronavirus Resource Center, June 10, 2020. Retrieved from:  
515 <https://coronavirus.jhu.edu/map.html>
- 516 37. Britton T, House T, Lloyd AL, Mollison D, Riley S, Trapman P. Five challenges for stochastic epidemic models  
517 involving global transmission. *Epidemics*. 2015 Mar 1;10:54-7.
- 518 38. Telles CR. False Asymptotic Instability Behavior at Iterated Functions with Lyapunov Stability in Nonlinear Time  
519 Series. arXiv preprint arXiv:1911.07646. 2019 Nov 13.
- 520 39. Jiang R, Murthy DN. A study of Weibull shape parameter: Properties and significance. *Reliability Engineering &*  
521 *System Safety*. 2011 Dec 1;96(12):1619-26.
- 522 40. Edelsbrunner, H., & Harer, J. (2008). Persistent homology-a survey. *Contemporary mathematics*, 453, 257-282.
- 523 41. Hua J, Shaw R. Corona virus (Covid-19) "infodemic" and emerging issues through a data lens: The case of china.  
524 *International journal of environmental research and public health*. 2020 Jan;17(7):2309.
- 525 42. Gallotti R, Valle F, Castaldo N, Sacco P, De Domenico M. Assessing the risks of " infodemics" in response to  
526 COVID-19 epidemics. arXiv preprint arXiv:2004.03997. 2020 Apr 8.
- 527 43. International Labour Organization (ILO). COVID-19 and the world of work: Country policy responses. Geneva,  
528 Switzerland: ILO, 2020. Retrieved from: [https://www.ilo.org/global/topics/coronavirus/country-responses/lang-](https://www.ilo.org/global/topics/coronavirus/country-responses/lang-en/index.htm)  
529 [-en/index.htm](https://www.ilo.org/global/topics/coronavirus/country-responses/lang-en/index.htm).
- 530 44. International Monetary Fund (IMF). Policy Responses to COVID-19, June 10, 2020. Retrieved from:  
531 <https://www.imf.org/en/Topics/imf-and-covid19/Policy-Responses-to-COVID-19#A>.  
532
- 533 **Conflicts of Interest:** "The author declares no conflict of interest."
- 534 **Author Contributions:** Not applicable.
- 535 **Funding:** "This research received no external funding".
- 536 **Statement of Ethics:** No humans or animals were involved in this study. Ethics approval was not required.
- 537 **No trial registration is applied for this study.**
- 538 **Data availability:**
- 539 a) All data about COVID-19 daily cases over time are held in a public repository:  
540 <https://www.worldometers.info/coronavirus/>.
- 541 b) All data about COVID-19 policies adopted by countries are held in a public repository:

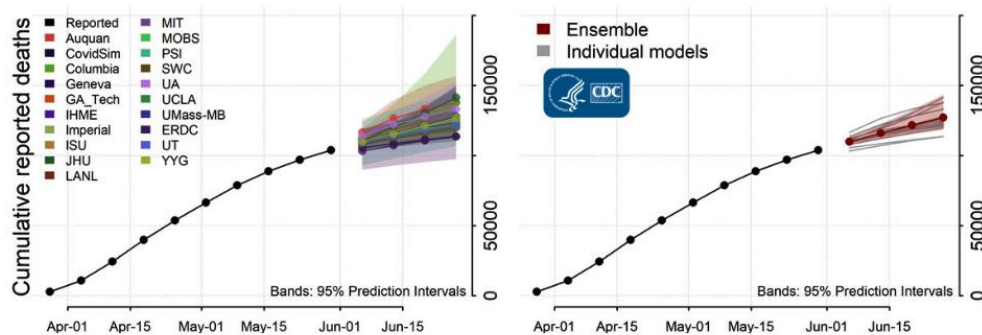
- 542 1. <https://www.ilo.org/global/topics/coronavirus/country-responses/lang--en/index.htm>  
 543 2. <https://www.imf.org/en/Topics/imf-and-covid19/Policy-Responses-to-COVID-19#A>  
 544 c) All other relevant data are within the manuscript and its Supporting Information files.

545  
 546 **Supplementary Materials:**

547 **“S1 Figure”.** Title: Uncertainty of predictive methods with automated tools. Source: Centers for Disease Control and  
 548 Prevention (CDC). Retrieved from: <https://www.cdc.gov/coronavirus/2019-ncov/covid-data/forecasting-us.html>, on  
 549 June 11, 2020.

## 550 National Forecast

### 551 National Forecast

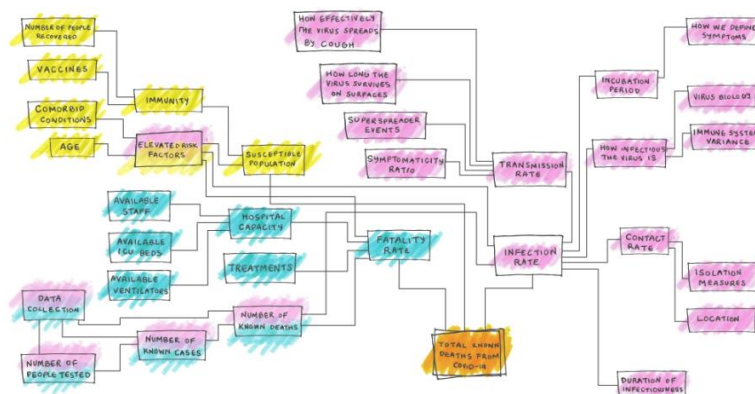


552  
 553  
 554  
 555  
 556  
 557  
 558 **Legend:** Mostly of the models present a shaded region where prediction might face uncertainty degree of  
 559 confidence. S1 supporting information image from CDC is under license of Public Health Image Library (PHIL):  
 560 royalty-free.

561  
 562

563 **“S2 Figure”.** Title: Confounding environment of variables that influence COVID-19 infectious spreading patterns.  
 564 **Image rights - Authors:** By Maggie Koerth, Laura Bronner and Jasmine Mithani. **Title of featured article:** “Filed  
 565 under Coronavirus”. **Published** Mar. 31, 2020. **Source:** ABC News Internet Ventures. All rights reserved – Five Thirty  
 566 Eight. **Retrieved from:** [https://fivethirtyeight.com/features/why-its-so-freaking-hard-to-make-a-good-covid-19-](https://fivethirtyeight.com/features/why-its-so-freaking-hard-to-make-a-good-covid-19-model/)  
 567 [model/](https://fivethirtyeight.com/features/why-its-so-freaking-hard-to-make-a-good-covid-19-model/), on June 11, 2020.

568  
 569  
 570  
 571  
 572  
 573



574 S2 supporting information image from ABC News Internet Ventures. All rights reserved – Five Thirty Eight and the  
575 author have received permission to reuse as far as it has the proper attribution.