

1 **Associations between wearing masks, washing hands, and social distancing practices, and**
2 **risk of COVID-19 infection in public: a cohort-based case-control study in Thailand**

3
4 Pawinee Doung-ngern PhD,¹ Repeepong Suphanchaimat PhD,^{1,2} Apinya Panjangampatthana
5 BSc,¹ Chawisar Janekrongtham MD,¹ Duangrat Ruampoom BSc,¹ Nawaporn Daochaeng BSc,¹
6 Napatchakorn Eungkanit BSc,¹ Nichakul Pisitpayat MD,¹ Nuengruethai Srisong BSc,¹ Oiythip
7 Yasopa BSc,¹ Patchanee Plernprom BSc,¹ Pitiphon Promduangsi MD,¹ Panita Kumphon BSc,¹
8 Paphanij Suangtho MPH,¹ Peeriya Watakulsin MD,¹ Sarinya Chaiya BSc,¹ Somkid
9 Kripattanapong BSc,¹ Thanawadee Chantian MPH,¹ Chawetsan Namwat MPH,^{1,2} Direk
10 Limmathurotsakul PhD,^{3,4,5}

11
12 ¹ Department of Disease Control, Ministry of Public Health, Tiwanon Road, Nonthaburi, 11000,
13 Thailand.

14 ² International Health Policy Program (IHPP), Ministry of Public Health, Tiwanon Road,
15 Nonthaburi, 11000, Thailand.

16 ³ Mahidol-Oxford Tropical Medicine Research Unit, Faculty of Tropical Medicine, Mahidol
17 University, Rajvithi Road, Bangkok, 10400, Thailand

18 ⁴ Department of Tropical Hygiene, Faculty of Tropical Medicine, Mahidol University, Rajvithi
19 Road, Bangkok, 10400, Thailand

20 ⁵ Centre for Tropical Medicine and Global Health, Nuffield Department of Medicine, University
21 of Oxford, Old Road Campus, Oxford, OX3 7LG, United Kingdom

22

23 **Corresponding author:** Direk Limmathurotsakul, 420/6 Mahidol-Oxford Tropical Medicine

24 Research Unit, Faculty of Tropical Medicine, Rajvithi Road, Bangkok, Thailand, 10400. Tel.

25 +66-2-203-6333 Email: direk@tropmedres.ac

26

27 **Alternate corresponding author:** Pawinee Doung-ngern, Department of Disease Control,

28 Ministry of Public Health, Nonthaburi, 11000, Thailand. Email: pawind@gmail.com

29

30 **Word count:** Abstract 292, Main Text 3,397

31 **Keywords:** COVID-19, SARS-CoV-2, mask, medical mask, non-medical mask, hand washing,

32 social distancing, contact tracing

33

34 **Summary**

35 **Background.** Effectiveness of personal protective measure against COVID-19 infection is largely
36 unknown.

37

38 **Methods.** We conducted a retrospective case-control study, using a cohort of contact tracing
39 records in Thailand. A total of 1,050 asymptomatic contacts of COVID-19 patients between 1 and
40 31 March 2020 were retrospectively interviewed by phone about their protective measures against
41 COVID-19 infection. Cases were defined as asymptomatic contacts who were diagnosed with
42 COVID-19 by 21 April 2020. Multilevel mixed-effect logistic regression models were used

43

44 **Findings.** Overall, 211 (20%) were diagnosed with COVID-19 by 21 Apr 2020 (case group) while
45 839 (80%) were not (control group). Fourteen percent of cases (29/210) and 24% of controls
46 (198/823) reported wearing either non-medical or medical masks all the time during the contact
47 period. Wearing masks all the time (adjusted odds ratio [aOR] 0.23; 95%CI 0.09-0.60) was
48 independently associated with lower risk of COVID-19 infection compared to not wearing masks,
49 while wearing masks sometimes (aOR 0.87; 95%CI 0.41-1.84) was not. Shortest distance of
50 contact >1 meter (aOR 0.15; 95%CI 0.04-0.63), duration of close contact \leq 15 minutes (aOR 0.24;
51 95%CI 0.07-0.90) and washing hands often (aOR 0.33; 95%CI 0.13-0.87) were significantly
52 associated with lower risk of infection. Sharing a cigarette (aOR 3.47; 95%CI 1.09-11.02) was
53 associated with higher risk of infection. Those who wore masks all the time were more likely to
54 wash hands and practice social distancing. We estimated that if everyone wore a mask all the time,
55 washed hands often, did not share a dish, cup or cigarette, maintained distances >1 meter and spent
56 \leq 15 minutes with close contacts, cases would have been reduced by 84%.

57

58 **Interpretation.** Our findings support consistently wearing masks, washing hands, and social
59 distancing in public to protect against COVID-19 infections. Combining measures could
60 substantially reduce infections in Thailand.

61

62 **Funding:** The study was supported by the DDC, MoPH, Thailand. DL is supported by the
63 Wellcome Trust (106698/Z/14/Z).

64

65 **Introduction**

66 There is an urgent need to evaluate the effectiveness of wearing masks by healthy persons in the
67 general public against COVID-19 infections. During the early stages of the outbreak of COVID-
68 19, the World Health Organization (WHO) announced on 27 February 2020 that, “For
69 asymptomatic individuals, wearing a mask of any type is not recommended”.¹ The rationale, at
70 that time, was to avoid unnecessary cost, procurement burden, and a false sense of security.¹ A
71 number of systematic reviews also found no conclusive evidence to support the widespread use of
72 masks in public against respiratory infectious diseases such as influenza, SARS and COVID-19.²⁻
73 ⁴ However, China and many countries in Asia including South Korea, Japan and Thailand have
74 recommended the use of face mask among the general public since early in the outbreak.⁵ There
75 is also increasing evidence that COVID-19 patients can have a “pre-symptomatic” period, during
76 which infected persons can be contagious and, therefore, transmit the virus to others before
77 symptoms develop.⁶ This led to the change of the recommendation of the US Centers for Disease
78 Control and Prevention, updated on 4 April 2020, from warning the public against wearing face
79 masks to advising everyone to wear a cloth face covering when in public.⁷ On 6 April and 5 June
80 2020, WHO updated their advice on the use of masks for the general public, and encouraged
81 countries to conduct research on this topic.⁶

82
83 Thailand has been implementing multiple measures to mitigate transmission of COVID-19 since
84 the beginning of the outbreak. The country has established thermal screening at airports since 3
85 January 2020, and detected the first case of COVID-19 outside China, a traveler from Wuhan
86 arriving at Bangkok Suvarnabhumi airport, on 8 January 2020.⁸ The country utilized the
87 Surveillance and Rapid Response Team (SRRT), together with Village Health Volunteers, to

88 perform contact tracing, educate the public about the disease and monitor the close contacts of
89 COVID-19 patients in quarantine. The SRRT is an epidemiologic investigation team trained to
90 conduct surveillance, investigations and initial controls of communicable diseases; including
91 H5N1, SARS and MERS.⁹ Currently, there are more than 1,000 SRRTs established at district,
92 provincial and regional levels in the country,⁹ working on contact tracing for COVID-19. In
93 February 2020, public pressure to wear masks was high, medical masks were difficult to procure
94 by the public, and the government categorized medical masks as price-controlled goods and
95 announced COVID-19 as a dangerous communicable disease according to the Communicable
96 Disease Act 2015 in order to empower officials to quarantine contacts and close venues. On 3
97 March, the Ministry of Public Health (MoPH) announced the recommendation of cloth mask for
98 the public. On 18 March, schools, universities, bars, nightclubs and entertainment venues were
99 closed. On 26 March, while the country was reporting approximately 100-150 new COVID-19
100 patients per day, the government declared a national state of emergency, prohibited public
101 gatherings, and enforced everyone to wear a face mask on public transport.¹⁰ On 21 April, 19 new
102 PCR-confirmed COVID-19 patients were announced by the MoPH, Thailand, bringing the total
103 number of patients to 2,811 patients.¹⁰

104
105 Given the lack of currently available evidence, we evaluated the effectiveness of mask wearing,
106 hand washing, social distancing and other protective measures against COVID-19 infection in
107 public in Thailand

108

109 **Methods**

110 **Study design and participants.**

111 We conducted a retrospective case-control study in which both cases and controls were drawn
112 from a cohort of contact tracing records of the central SRRT team, Department of Disease Control
113 (DDC), MoPH, Thailand (Figure 1). Contacts were defined by the DDC MoPH as individuals who
114 had activities together with or were in the same location(s) as a COVID-19 patient.^{11,12} The main
115 aim of contact tracing was to identify and evaluate contacts, perform PCR diagnostic tests, and
116 quarantine high-risk contacts. Contacts were tested with PCR assays per national contact tracing
117 guidelines (Supplementary Text).^{11,12} All PCR tests were performed at laboratories certified for
118 COVID-19 testing by the National Institute of Health of Thailand. Data on risk factors associated
119 with COVID-19 infection, such as type of contact and use of mask, were recorded during the
120 contact investigation, but not complete.

121
122 The central SRRT team was tasked to perform contact investigations for any cluster with at least
123 five PCR-confirmed COVID-19 patients from the same location(s) within a one-week period.¹¹
124 We primarily used these data to identify asymptomatic contacts of COVID-19 patients between 1
125 and 31 March 2020. To reduce the bias of the selection of asymptomatic contacts, all contact
126 tracing records of the central SRRT team were used in the study.

127

128 **Procedures**

129 We then conducted telephone calls and asked details about their contacts with COVID-19 patients
130 (e.g. date, location, duration and distance of contacts), whether they wore masks, washed their
131 hands and performed social distancing during the contact period, and whether the COVID-19
132 patient, if known, wore a mask. We also asked, and checked using records of the DDC, whether
133 and when they were sick and diagnosed with COVID-19. To include only asymptomatic contacts

134 in the study, we excluded people from the analysis who already had any symptoms of COVID-19
135 on the first day of contact. We also excluded contacts whose contact locations were healthcare
136 facilities because this study aimed to focus on infection in the public.

137
138 Asymptomatic contacts, cases, controls, index patients, primary index patients and COVID-19
139 patients were defined as described in Table 1. The reporting of this study follows the STROBE
140 guidelines.

141
142 **Selection of cases and controls**

143 We defined asymptomatic contacts who were later diagnosed as COVID-19 patients using PCR
144 assays by 21 Apr 2020 as cases (Table 1). All asymptomatic contacts who were not diagnosed as
145 COVID-19 patients using PCR assays by 21 Apr 2020 were controls. We arbitrarily used 21 days
146 after 31 March as the cutoff based on the evidence that most COVID-19 patients would likely
147 develop symptoms within 14 days¹³ and it should take less than another 7 days for symptomatic
148 patients to present at healthcare facilities and be tested for COVID-19 with PCR assays.

149
150 **Statistical analysis**

151 Odds ratios (OR) and 95% confidence intervals were estimated for associations between
152 development of COVID-19 and baseline covariates, such as wearing masks, washing hands and
153 social distancing using logistic regression with a random effect for location and a random effect
154 for index patient nested within the same location. The interviewer identified the index patient, the
155 symptomatic COVID-19 patient who had the closest contact, if an asymptomatic contact had
156 contacted with more than one symptomatic COVID-19 patient. The percentage of missing values

157 in the variable whether the COVID-19 patients wore a mask was 27%, and the variable was not
158 included in the analyses. We assumed that missing values were missing at random and used
159 imputation by chained equations. We created 10 imputed datasets and the imputation model
160 included all listed confounders and the case-control indicator. We developed the final multilevel
161 mixed-effect logistic regression models on the basis of previous knowledge and a purposeful
162 selection method.¹⁴ Compliance of wearing mask was strongly associated with lower risk of
163 COVID-19 infection in multivariable models, while type of mask was not. Due to the collinearity
164 between the two variables, type of mask was not included in the final model.

165
166 We also estimated OR and 95% confidence intervals for associations between compliance of mask
167 wearing and other practices; including washing hands and social distancing using multinomial
168 logistic regression models and the imputed data set. Logistic regression was also used to estimate
169 p-values for pairwise comparisons. Bonferroni correction was not performed. We estimated
170 secondary attack rate using definitions as described in Table 1, to allow for comparison with other
171 studies.

172
173 We conducted a sensitivity analysis by including type of mask in the multilevel mixed-effects
174 logistic regression model for COVID-19 infection. We also tested a pre-defined interaction
175 between type of mask and compliance of wearing masks.

176
177 To respond to national policy, we also estimated population attributable fraction (PAF) using the
178 imputed dataset and a direct method based on logistic regression as described previously
179 (Supplementary Text).^{15,16} The final multivariable model was modified by considering each risk

180 factor dichotomously, and PAF was calculated by subtraction of the total number of predicted
181 cases from total number of observed cases, divided by the total number of observed cases. STATA
182 version 14.2 and R version 4.0.0 were used for all analyses.

183
184 **Role of the funding source:** The study sponsor did not participate in study design, data collection,
185 analysis, interpretation of data, or writing of the article. PD, RS and DL had access to all the data
186 in the study.

187
188 **RESULTS**

189 Contact tracing by the central SRRT team consisted of 1,716 individuals who had contact with or
190 were in the same location as a COVID-19 patient, and who were associated with three large clusters
191 in nightclubs, boxing stadiums and a state enterprise office in Thailand (Figure 1). Overall, we
192 considered 18 individuals as primary index patients because they were the first to have symptoms
193 at those places, had symptoms since the first day of visiting those places, or were considered to be
194 the origin of infection of cases based on the contact investigations; 11 from the nightclub cluster,
195 5 from the boxing stadium cluster and 2 from the state enterprise office cluster. Timelines of
196 primary index patients from nightclub, boxing stadium and state enterprise clusters are described
197 in details in Supplementary Text and Supplementary Figure 1-3. All 18 primary index patients
198 were excluded from the analysis of the case-control study.

199
200 After retrospectively interviewing each contact by phone and applying the exclusion criteria
201 (Figure 1), we included 1,050 asymptomatic contacts who had contact with or were in the same
202 location as a symptomatic COVID-19 patient between 1 and 31 March 2020 in the analysis. The

203 median age of individuals was 38 years (IQR 28-51) and 55% were male (Table 1). Most
204 asymptomatic contacts included in the study were associated with the boxing stadium cluster (61%,
205 n=645), with 36% (n=374) with the nightclub cluster, and 3% (n=31) with the state enterprise
206 office cluster.

207
208 Overall, 211 (20%) asymptomatic contacts were later diagnosed with COVID-19 by 21 Apr 2020
209 (case group) and 839 (80%) were not (control group). Of the 211 cases, 150 (71%) had symptoms
210 prior to the diagnosis of COVID-19 using PCR assays. The last date that a COVID-19 case was
211 diagnosed was 9 April 2020. Of 839 controls, 719 (86%) were tested with PCR assays at least once.

212
213 Figure 2 illustrates contacts (and possible transmission of COVID-19 infections) between index
214 patients to asymptomatic contacts included in the study. A total of 228, 144 and 20 asymptomatic
215 contacts had contact with index patients at nightclubs, boxing stadiums and the state enterprise
216 office, respectively. The others were contacts of cases related to nightclubs, boxing stadiums and
217 the state enterprise office at workplaces (n=277), households (n=230) and other places (n=151).

218
219 **Primary analysis**

220 Table 2 shows there was a negative association between risk of COVID-19 infection and shortest
221 distance of contact >1 meter (adjusted odds ratio [aOR] 0.15, 95% confidence interval [CI] 0.04-
222 0.63), duration of contact ≤15 minutes (aOR 0.24, 95%CI 0.07-0.90), washing hands often (aOR
223 0.33, 95%CI 0.13-0.87) and wearing masks all the time (aOR 0.23, 95%CI 0.09-0.60). Wearing
224 masks sometimes was not significantly associated with lower risk of infection (aOR 0.87, 95%CI
225 0.41-1.84), whereas sharing cigarettes was associated with higher risk of COVID-19 infection

226 (aOR 3.47, 1.09-11.02). Type of mask was associated with infection at the univariable model.
227 Compliance of wearing masks was strongly associated with lower risk of COVID-19 infection in
228 multivariable models, while type of mask was not. Due to the collinearity between the two
229 variables, type of mask was not included in the final model.

230

231 **Association between compliance of mask wearing and other social distancing practices.**

232 Since wearing masks all the time was found to be negatively associated with COVID-19 infection,
233 we wanted to explore characteristics of those patients because of a potential false sense of security
234 caused by wearing masks. We found that those who wore masks all the time were more likely to
235 have shortest distance of contact >1 meter (25% vs. 18%, pairwise $p=0.03$), have duration of
236 contact ≤ 15 minutes (26% vs 13%, pairwise $p<0.001$) and wash their hands often (79% vs. 26%,
237 pairwise $p<0.001$) compared with those who did not wear masks (Table 3). We found that those
238 who wore masks sometimes were more likely to wash their hands often (43% vs. 26%, pairwise
239 $p<0.001$) compared with those who did not wear masks. However, they were more likely to have
240 physical contact (50% vs. 42%, pairwise $p=0.03$) and duration of contact >60 minutes (75% vs.
241 67%, pairwise $p=0.04$) compared with those who did not wear masks.

242

243 **Secondary attack rate**

244 Overall, 982 (94%) were contacts with high-risk exposure. All 68 asymptomatic contacts without
245 high-risk exposure were controls. Among asymptomatic contacts with high-risk exposure included
246 in the study, the nightclub secondary attack rate was 16% (35/213), the boxing stadium secondary
247 attack rate was 87% (125/144), the workplace secondary attack rate was 4% (11/250), the

248 household secondary attack rate was 17% (38/230), and the secondary attack rate at other places
249 was 1% (2/145).

250

251 **Sensitivity analyses**

252 To determine if type of mask was independently associated with infection, we included type of
253 mask in the multivariable model (Supplementary Table 1). Type of mask was not independently
254 associated with infection ($p=0.55$). Interaction between type of mask and compliance of mask
255 wearing was not observed.

256

257 **Population attributable fraction (PAF)**

258 Using the direct method to calculate PAF, we estimated that the proportional reduction in cases
259 that would occur if everyone wore a mask all the time during contact with index patients was 0.28
260 (Table 4). Among modifiable risk factors evaluated, PAF of shortest distance of contact <1 meter
261 was highest at 0.40. If everyone wore a mask all the time, washed hands often, did not share a dish,
262 cup or cigarette, had shortest distance of contact >1 meter and had duration of close contact ≤ 15
263 min, cases would have been reduced by 84%. The reduction could be as high as 97% to 99% in
264 most places under evaluation, except boxing stadiums with an estimated reduction of 75%.

265

266 **DISCUSSIONS**

267 This cohort-based case-control study provides a supporting evidence that wearing masks, washing
268 hands and social distancing are independently associated with lower risk of COVID-19 infection
269 in the general public. We observed that wearing masks all the time when exposed to someone with
270 COVID-19 was associated with lower risk of infection, while wearing masks sometimes was not.

271 This supports the recommendation that people should be wearing their masks correctly at all times
272 in public and at home when there is an increased risk.⁵⁻⁷

273
274 We quantified the effectiveness of different measures that could be implemented to protect against
275 COVID-19 infections in nightclubs, stadiums, workplaces and other public gathering places. We
276 estimated that adopting all recommendations (wearing masks all the time, washing hands often,
277 not sharing dishes, cups or cigarettes, maintaining a distance of <1 meter and spending ≤ 15 minutes
278 with a close contact) could result in controlling 84% of the burden of COVID-19 infections in our
279 setting during the study period. We recommend that all public gathering places consider all
280 measures to protect against COVID-19 and new pandemic diseases in the future.

281
282 The effectiveness of wearing masks observed in this study is consistent with previous studies;
283 including a randomized-controlled trial (RCT) showing that adherent use of a face mask reduce
284 the risk of influenza-like illness¹⁷ and case-control studies which found that wearing masks is
285 associated with lower risk of SARS infection.¹⁸⁻²⁰ While previous studies found use of surgical
286 masks or 12–16-layer cotton masks demonstrated protection against coronavirus infection in the
287 community,¹⁸⁻²⁰ we did not observe a difference between wearing non-medical and medical masks
288 in the general population. Therefore, we strongly support wearing non-medical masks in public to
289 protect against COVID-19 infections. Even though the risk perception of COVID-19 threat can
290 increase the likelihood of wearing medical masks in other settings,²¹ we maintain that medical
291 masks should be reserved for healthcare workers.

292

293 This study found a negative association between risk of COVID-19 infection and social distancing
294 (i.e. distance and duration of contact), which is consistent with previous studies which found that
295 at least 1-meter physical distancing was strongly associated with a large protective effect, and
296 distances of 2 meters could be more effective.²⁰ Effectiveness of hand hygiene is consistent with
297 the previous studies.²²

298
299 The household secondary attack rate in our study (17%) is comparable with those reported ranging
300 from 11% to 19%,^{23,24} and relatively high compared to workplaces and other places. While
301 challenging and sometimes impractical, household members should immediately separate a person
302 who develops any possible symptoms of COVID-19 from other household members (i.e. a sick
303 person should stay in a specific room, use a separate bathroom, if possible, and do not share dishes,
304 cups and other utensils in the households).²⁵ All household members should be encouraged to wear
305 masks, keep washing hands and perform social distancing to the extent possible.²⁶

306
307 The high number of COVID-19 patients associated with nightclubs in Bangkok is comparable to
308 COVID-19 outbreak associated with Itaewon nightclub cluster in Seoul, Korea, in May 2020.²⁷
309 Similarly, we also found individuals who visited several nightclubs in the same area during the
310 short period of time. The high number of COVID-19 patient cluster associated with boxing
311 stadiums in Bangkok is similar to a cluster likely to have been associated with a football match in
312 Italy in February 2020.²⁸ The secondary attack rate of COVID-19 at a choir practice in the U.S.
313 was reported to be as high as 53%,²⁹ and the secondary attack rates in public gathering places with
314 high density of people shouting and cheering, such as football and boxing stadiums, are still largely
315 unknown.

316

317 It is likely that clear and consistent public messaging from policy makers prevents a false sense of
318 security and promotes compliance with social distancing in Thailand. We found that those who
319 wore masks all the time were also more likely to wash hands and perform social distancing. It is
320 recommended that both mainstream and social media support public health responses by teaming
321 with government in providing consistent, simple and clear messages.³⁰ Both positive and negative
322 messages can influence the public.³⁰ In Thailand, daily briefings of Thailand's Centre for COVID-
323 19 Situation Administration (CCSA) gave clear and consistent messages on social distancing every
324 day, as well as how to put on a mask and wash hands. The regular situation reports and advices by
325 CCSA may have improved the confidence in the public and compliance with the recommendations.

326

327 Nonetheless, public messaging on how to wear masks correctly needs to be consistently delivered,
328 particularly among those who wear masks sometimes or incorrectly (e.g. not covering both nose
329 and mouth). This is because, based on our findings, those who wear masks intermittently could be
330 a group that did not practice social distancing adequately.

331

332 There are several limitations of the study. First, our finding might not be generalizable to all
333 settings, since findings were based on contacts associated with three major COVID-19 clusters in
334 Thailand during March 2020. Second, the estimated odds ratios were based on a condition that the
335 contact with index patients occurred. Our study did not evaluate or take into account the probability
336 of contacting index patients in public. Our study also lacked power to evaluate whether wearing
337 masks by index patients can prevent infecting others in public. Third, our findings were based on
338 PCR testing per national contact tracing guideline,^{11,12} and as such the estimated odds ratios might

339 not take account of all asymptomatic infections. Fourth, it is impossible to identify every potential
340 contact an individual has and some individuals may have been contacts to more than one COVID-
341 19 patient. Hence, our estimated secondary attack rates among contacts with high-risk exposure
342 could be over or under-estimated. Fifth, findings were subject to common biases of retrospective
343 case-control studies; including memory bias, observer bias and information bias. Nonetheless, we
344 used structured interviews, whereby each participant was asked the same set of defined questions,
345 to reduce potential biases.

346

347 As measures against COVID-19 are being implemented or relaxed in many countries worldwide,
348 it is important that we continue to expand our understanding about the effectiveness of each
349 personal protective measure. Wearing masks, washing hands and social distancing are strongly
350 associated with lower risk of COVID-19 infections. We strongly support wearing non-medical
351 masks in public to protect against COVID-19 infections. We also suggest that medical masks
352 should be reserved for healthcare workers. Everyone should also wash their hands frequently and
353 comply with recommendations of social distancing.

354

355

356 **Research in context**

357 **Evidence before this study**

358 We searched PubMed and medRxiv for peer-reviewed articles, preprints and research reports on
359 effectiveness of wearing masks, washing hands, and social distancing against COVID-19 and
360 related diseases; including severe acute respiratory syndrome (SARS) and Middle East respiratory
361 syndrome (MERS). We identified two case-control studies from China and one cohort study from
362 Vietnam evaluating effectiveness of wearing masks against SARS in public. A recent meta-
363 analysis estimated an overall relative risk of wearing masks in public (0.56; 95%CI 0.40-0.79)
364 based on the three studies. A meta-analysis including six case-control studies on SARS estimated
365 odds ratio of hand washing more than 10 times daily in preventing disease transmission (0.45;
366 95%CI 0.36-0.57). The recent meta-analysis found a negative association between risk of infection
367 and physical distancing; six of 38 studies included were on COVID-19. No comparative studies of
368 wearing masks or washing hands in public against COVID-19 infections were identified.

369

370 **Added value of this study**

371 We did a cohort-based case-control study of 1,050 asymptomatic contacts of COVID-19 patients
372 in the general public in Thailand. Our findings are, to the best of our knowledge, the first
373 comparative study to quantitatively assess the protective effects of wearing masks and washing
374 hands against COVID-19 infections in the general population. We observed that wearing masks
375 all the time when exposed to someone with COVID-19 was associated with lower risk of infection,
376 while wearing masks sometimes was not. We also found that those who wore masks all the time
377 were more likely to perform social distancing, while those who wore masks intermittently were
378 less likely to. We estimated that adopting all recommendations (wearing masks all the time,

379 washing hands often, not sharing dishes, cups or cigarettes, maintaining a distance of <1 meter and
380 spending <15 minutes with a close contact) could result in controlling 84% of the burden of
381 COVID-19 infections in our setting during the study period. The reduction could be as high as
382 97% to 99% in most places, except boxing stadiums with an estimated reduction of 75%.

383

384 **Implication of all the available evidence**

385 As lockdowns are being relaxed in many countries, our findings provide some evidence supporting
386 consistently wearing non-medical mask, washing hands, and performing social distancing to
387 protect against COVID-19 in public gathering places. The effectiveness of complying with all
388 measures could be high. However, in places with a high density of people, additional measures
389 may be required. Policy makers should strive to deliver public messaging on recommendations
390 against COVID-19 infection clearly and consistently, particularly among those who wear masks
391 intermittently or incorrectly. Our data also showed that no protective measure was associated with
392 complete protection from COVID-19 infection. All measures, including wearing non-medical
393 masks, washing hands, and social distancing are required to protect against COVID-19 infections
394 in public.

395

396

397 **Contributors**

398 PD, RS, CN and DL contributed to design of the study. PD, RS and DL contributed to setting up
399 the database and quality control. AP, CJ, DR, ND, NE, NP, NS, OY, PaP, PiP, PK, PS, PW, SC,
400 SK and TC contributed to data collection. DL carried out the main statistical analysis. PD and RS
401 coordinated the study and contributed to the statistical analyses. PD, RS and DL contributed to
402 interpretation of the results and drafted the manuscript. All authors commented on drafts and read
403 and approved the final manuscript. The corresponding author attests that all listed authors meet
404 authorship criteria and that no others meeting the criteria have been omitted. PD is the guarantor.

405

406 **Declaration of interests:** We declare no competing interests.

407

408 **Data sharing:** All data in aggregate are reported in the manuscript.

409

410 **Acknowledgement:**

411 We thank all participants and all COVID-19 patients involved in providing information. We thank
412 all SRRT members at the central, regional, provincial and district levels, as well as all Village
413 Health Volunteers in Thailand. We thank Pattraporn Klanjatturat and Inthira Yamabhai for the
414 technical assistance. We thank Dr. Suwannachai Wattanayingcharoenchai, Dr. Sombat
415 Thanprasertkul, Dr. Panithee Thammawijaya and Dr. Walairat Chaifoo of the DDC, MoPH, and
416 Dr. Virsasakdi Chongsuvivatwong from Prince of Songkhla University for their advices and
417 direction.

418

419 **Funding:** The study was supported by the DDC, MoPH, Thailand. DL is supported by the
420 Wellcome Trust (106698/Z/14/Z). The study sponsors did not participate in study design, data
421 collection, analysis, interpretation of data, or writing of the article.

422
423 **Ethical approval:** As this study was part of the routine situation analysis and outbreak
424 investigation of the DDC MoPH Thailand, it was not required to obtain ethics approval and no
425 written informed consent was collected. However, the study team strictly followed ethical
426 standards in research; that is, all individual information was strictly kept confidential and not
427 reported in the paper. The DDC MoPH Thailand approved the analysis and reporting of data in
428 aggregate.

429

430 **References**

- 431 1. WHO. Rational use of personal protective equipment for coronavirus disease (COVID-
432 19): interim guidance, 27 February 2020. <https://apps.who.int/iris/handle/10665/331215>
433 (accessed 16 June 2020).
- 434 2. Long Y, Hu T, Liu L, et al. Effectiveness of N95 respirators versus surgical masks
435 against influenza: A systematic review and meta-analysis. *J Evid Based Med* 2020.
- 436 3. Cowling BJ, Zhou Y, Ip DK, Leung GM, Aiello AE. Face masks to prevent transmission
437 of influenza virus: a systematic review. *Epidemiol Infect* 2010; **138**(4): 449-56.
- 438 4. Jefferson T, Del Mar CB, Dooley L, et al. Physical interventions to interrupt or reduce
439 the spread of respiratory viruses. *Cochrane Database Syst Rev* 2011; (7): CD006207.
- 440 5. Feng S, Shen C, Xia N, Song W, Fan M, Cowling BJ. Rational use of face masks in the
441 COVID-19 pandemic. *Lancet Respir Med* 2020.
- 442 6. WHO. Advice on the use of masks in the context of COVID-19: interim guidance, 5 June
443 2020. <https://apps.who.int/iris/handle/10665/332293> (accessed 16 June 2020).
- 444 7. Centers for Disease Control and Prevention. Coronavirus disease 2019 (COVID-19) How
445 to Protect Yourself and Others 2020. [https://www.cdc.gov/coronavirus/2019-ncov/prevent-
446 getting-sick/prevention-H.pdf](https://www.cdc.gov/coronavirus/2019-ncov/prevent-getting-sick/prevention-H.pdf) (accessed 16 June 2020).
- 447 8. Okada P, Buathong R, Phuygun S, et al. Early transmission patterns of coronavirus
448 disease 2019 (COVID-19) in travellers from Wuhan to Thailand, January 2020. *Euro Surveill*
449 2020; **25**(8).
- 450 9. Chunsuttiwat S. Response to avian influenza and preparedness for pandemic influenza:
451 Thailand's experience. *Respirology* 2008; **13 Suppl 1**: S36-40.

- 452 10. WHO Thailand. Coronavirus disease 2019 (COVID-19) WHO Thailand Situation Report
453 - 21 April 2020 2020 [https://www.who.int/docs/default-source/searo/thailand/2020-04-21-tha-](https://www.who.int/docs/default-source/searo/thailand/2020-04-21-tha-sitrep-59-covid19-new-template-final.pdf?sfvrsn=31bc500a_0)
454 [sitrep-59-covid19-new-template-final.pdf?sfvrsn=31bc500a_0](https://www.who.int/docs/default-source/searo/thailand/2020-04-21-tha-sitrep-59-covid19-new-template-final.pdf?sfvrsn=31bc500a_0) (accessed 16 June 2020).
- 455 11. Department of Disease Control, Ministry of Public Health, Thailand. Coronavirus
456 Disease 2019: COVID-19, updated on 3 March 20202020.
457 https://ddc.moph.go.th/viralpneumonia/file/guidelines/G_Invest_03_2.pdf (accessed 16 June
458 2020).12. Department of Disease Control, Ministry of Public Health, Thailand. Coronavirus
459 Disase 2019: COVID-19, updated on 23 March 20202020.
460 https://ddc.moph.go.th/viralpneumonia/file/g_srrt/g_srrt_250363.pdf (accessed 16 June 2020).
- 461 13. Lauer SA, Grantz KH, Bi Q, et al. The Incubation Period of Coronavirus Disease 2019
462 (COVID-19) From Publicly Reported Confirmed Cases: Estimation and Application. *Ann Intern*
463 *Med* 2020.
- 464 14. Bursac Z, Gauss CH, Williams DK, Hosmer DW. Purposeful selection of variables in
465 logistic regression. *Source Code Biol Med* 2008; **3**: 17.
- 466 15. Azimi SS, Khalili D, Hadaegh F, Yavari P, Mehrabi Y, Azizi F. Calculating population
467 attributable fraction for cardiovascular risk factors using different methods in a population based
468 cohort study. *J Res Health Sci* 2015; **15**(1): 22-7.
- 469 16. Ruckinger S, von Kries R, Toschke AM. An illustration of and programs estimating
470 attributable fractions in large scale surveys considering multiple risk factors. *BMC Med Res*
471 *Methodol* 2009; **9**: 7.
- 472 17. MacIntyre CR, Cauchemez S, Dwyer DE, et al. Face mask use and control of respiratory
473 virus transmission in households. *Emerg Infect Dis* 2009; **15**(2): 233-41.

- 474 18. Wu J, Xu F, Zhou W, et al. Risk factors for SARS among persons without known contact
475 with SARS patients, Beijing, China. *Emerg Infect Dis* 2004; **10**(2): 210-6.
- 476 19. Lau JT, Tsui H, Lau M, Yang X. SARS transmission, risk factors, and prevention in
477 Hong Kong. *Emerg Infect Dis* 2004; **10**(4): 587-92.
- 478 20. Chu DK, Akl EA, Duda S, et al. Physical distancing, face masks, and eye protection to
479 prevent person-to-person transmission of SARS-CoV-2 and COVID-19: a systematic review and
480 meta-analysis. *Lancet* 2020.
- 481 21. Huynh TD. The more I fear about COVID-19, the more I wear medical masks: A survey
482 on risk perception and medical masks uses. *medRxiv* 2020: 2020.03.26.20044388.
- 483 22. Jefferson T, Del Mar C, Dooley L, et al. Physical interventions to interrupt or reduce the
484 spread of respiratory viruses: systematic review. *BMJ* 2009; **339**: b3675.
- 485 23. Bi Q, Wu Y, Mei S, et al. Epidemiology and transmission of COVID-19 in 391 cases and
486 1286 of their close contacts in Shenzhen, China: a retrospective cohort study. *Lancet Infect Dis*
487 2020.
- 488 24. Jing Q-L, Liu M-J, Yuan J, et al. Household Secondary Attack Rate of COVID-19 and
489 Associated Determinants. *medRxiv* 2020: 2020.04.11.20056010.
- 490 25. Centers for Disease Control and Prevention. Coronavirus Disease 2019 What To Do If
491 You Are Sick2020. [https://www.cdc.gov/coronavirus/2019-ncov/if-you-are-sick/steps-when-](https://www.cdc.gov/coronavirus/2019-ncov/if-you-are-sick/steps-when-sick.html)
492 [sick.html](https://www.cdc.gov/coronavirus/2019-ncov/if-you-are-sick/steps-when-sick.html) (accessed 16 June 2020).
- 493 26. Centers for Disease Control and Prevention. Households Living in Close Quarters: How
494 to Protect Those That Are Most Vulnerable2020. [https://www.cdc.gov/coronavirus/2019-](https://www.cdc.gov/coronavirus/2019-ncov/daily-life-coping/living-in-close-quarters.html)
495 [ncov/daily-life-coping/living-in-close-quarters.html](https://www.cdc.gov/coronavirus/2019-ncov/daily-life-coping/living-in-close-quarters.html) (accessed 16 June 2020).

- 496 27. PROMED. PRO/AH/EDR> COVID-19-update (176): China, S. Korea, countries w/ high
497 local transmission2020. <https://promedmail.org/promed-post/?id=7325551> (accessed 16 June
498 2020).
- 499 28. Boccia S, Ricciardi W, Ioannidis JPA. What Other Countries Can Learn From Italy
500 During the COVID-19 Pandemic. *JAMA Intern Med* 2020.
- 501 29. Hamner L, Dubbel P, Capron I, et al. High SARS-CoV-2 Attack Rate Following
502 Exposure at a Choir Practice - Skagit County, Washington, March 2020. *MMWR Morb Mortal*
503 *Wkly Rep* 2020; **69**(19): 606-10.
- 504 30. Hopman J, Allegranzi B, Mehtar S. Managing COVID-19 in Low- and Middle-Income
505 Countries. *JAMA* 2020.
- 506

507 **Table 1. Definitions used in the study**

Classification	Definition
Asymptomatic contacts	Individuals who had contact with or were in the same location as a symptomatic COVID-19 patient, and had no symptoms of COVID-19 on the first day of contact.
Cases	Asymptomatic contacts of COVID-19 patients who were later diagnosed and officially reported as COVID-19 patients by 21 Apr 2020.
Controls	Asymptomatic contacts of COVID-19 patients who were never diagnosed as COVID-19 patients by 21 Apr 2020.
Index patients	The COVID-19 patients identified from the contract tracing data as the potential source of infection. Cases (as defined above) could also be included as index patients.
Primary index patients	The earliest COVID-19 patients whose probable sources of infection were prior to the study period (1 to 31 March 2020), whom we were not able to identify the source of infection from, or whose probable sources of infection were outside the contract tracing data included in the study
COVID-19 patients	Individuals who had PCR positive for SARS-CoV-2, officially confirmed and reported by Department of Disease Control (DDC), Ministry of Public Health (MoPH), Thailand
Secondary attack rate	The percentage of new cases among asymptomatic contacts with high-risk exposure
High-risk exposure	Individuals who lived in the same household as a COVID-19 patient, had a direct physical contact with a COVID-19 case, had face-to-face contact with a COVID-19 case within 1 meter and longer than 15 minutes, or were in a closed environment with a COVID-19 patient at a distance of within 1 meter and longer than 15 minutes.
Household contact	Individuals who lived in the same household as a COVID-19 patient

508

509

Table 2. Factors associated with COVID-19 infections

Factors	Cases (n=211)	Controls (n=839)	Crude odds ratio (95% CI) ^a	P	Adjusted odds ratio (95% CI) ^a	P
Male gender	146/211 (69%)	434/838 (52%)	0.83 (0.47-1.46)	0.52	0.76 (0.41-1.41)	0.38
Age group						
≤15 years old	6/211 (3%)	49/829 (6%)	0.65 (0.17-2.48)	0.28	0.57 (0.15-2.21)	0.20
>15 – 40 years old	94/211 (45%)	435/829 (52%)	1.0		1.0	
>40 – 65 years old	98/211 (46%)	302/829 (36%)	1.66 (0.92-2.99)		1.77 (0.94-3.32)	
>65 years old	13/211 (6%)	43/829 (5%)	1.27 (0.32-4.97)		0.97 (0.22-4.24)	
Contact place^b						
Nightclub	35 (17%)	193 (23%)	Not applicable ^c	-	Not applicable ^c	-
Boxing stadium	125 (59%)	19 (2%)				
Workplace	11 (5%)	286 (34%)				
Household	38 (18%)	192 (23%)				
Others	2 (1%)	149 (18%)				
Shortest distance of contact						
Physical contact	132/197 (67%)	292/809 (36%)	1.0	0.001	1.0	0.02
≤1 meter without physical contact	61/197 (31%)	335/809 (41%)	0.76 (0.43-1.36)		1.09 (0.58-2.07)	
>1 meter	4/197 (2%)	182/809 (22%)	0.08 (0.02-0.30)		0.15 (0.04-0.63)	
Duration of contact within 1 meter						
>60 minutes	180/199 (90%)	487/801 (61%)	1.0	0.003	1.0	0.09
>15 – 60 minutes	14/199 (7%)	162/801 (20%)	0.52 (0.23-1.16)		0.67 (0.29-1.55)	
≤15 minutes	5/199 (3%)	152/801 (19%)	0.13 (0.04-0.46)		0.24 (0.07-0.90)	
Sharing dishes or cups^{d,e}						
No	125/210 (60%)	576/837 (69%)	1.0	0.001	1.0	0.38
Yes	85/210 (40%)	261/837 (31%)	2.72 (1.49-4.97)		1.33 (0.70-2.54)	
Sharing cigarettes^{d,f}						
No	196/209 (94%)	824/836 (99%)	1.0	0.001	1.0	0.04
Yes	13/209 (6%)	12/836 (1%)	6.19 (2.13-17.95)		3.47 (1.09-11.02)	
Washing hands^{d,g}						
None	44/210 (21%)	121/826 (15%)	1.0	<0.001	1.0	0.04
Sometimes	114/210 (54%)	333/826 (40%)	0.40 (0.18-0.89)		0.34 (0.14-0.81)	
Often	52/210 (25%)	372/826 (45%)	0.19 (0.08-0.44)		0.33 (0.13-0.87)	
Wearing masks^{d,h}						

Not wearing masks	102/211 (48%)	500/834 (60%)	1.0	0.003	-	-
Wearing non-medical masks	25/211 (12%)	77/834 (9%)	0.78 (0.32-1.90)			
Wearing non-medical and medical masks alternately	12/211 (6%)	48/834 (6%)	0.46 (0.13-1.64)			
Wearing medical masks	72/211 (34%)	209/834 (25%)	0.25 (0.12-0.53)			
Compliance with mask wearing ^{d,h}						
Not wearing a mask	102/210 (49%)	500/823 (61%)	1.0	<0.001	1.0	0.007
Sometimes	79/210 (38%)	125/823 (15%)	0.75 (0.37-1.52)		0.87 (0.41-1.84)	
All the time	29/210 (14%)	198/823 (24%)	0.15 (0.07-0.36)		0.23 (0.09-0.60)	

Footnote of Table 2. ^a Both crude and adjusted odds ratios were estimated using logistic regression with a random effect for location and a random effect for index patient nested within the same location. ^b The state enterprise office was considered and included as a workplace. Others included restaurants, markets, malls, religious places, households of index patients or other people but not living together, etc. ^c Location was included in the model as a random effect variable. ^d During the contact period. ^e Sharing dishes but using communal spoons all the time was considered as not sharing dishes. ^f Included sharing electronic cigarettes and any vaping devices. ^g Included washing with soap and water, and with alcohol-based solutions. ^h Wearing masks incorrectly (i.e. not covering both nose and mouth) was considered as not wearing.

Table 3. Factors associated with compliance of mask wearing

Factors	Not wearing masks (n=602)	Wearing masks sometimes (n=204)	Wearing masks all the time (n=227)	P
Male gender	324/601 (54%)	129/204 (63%)	115/227 (51%)	0.03
Age group				
≤15 years old	45/594 (8%)	5/204 (2%)	3/225 (1%)	<0.001
>15 – 40 years old	269/594 (45%)	117/204 (57%)	132/225 (59%)	
>40 – 65 years old	236/594 (40%)	76/204 (37%)	84/225 (37%)	
>65 years old	44/594 (7%)	6/204 (3%)	6/225 (3%)	
Contact places				
Nightclub	84 (14%)	51 (25%)	91 (40%)	<0.001
Boxing stadium	48 (8%)	66 (32%)	29 (13%)	
Workplace ^a	178 (30%)	46 (23%)	64 (28%)	
Household	167 (28%)	27 (13%)	33 (15%)	
Others ^b	125 (21%)	14 (7%)	10 (4%)	
Shortest distance of contact				
Physical contact	246/588 (42%)	96/191 (50%)	76/212 (36%)	0.005
≤1 meter without physical contact	238/588 (40%)	70/191 (37%)	83/212 (39%)	
>1 meter	104/588 (18%)	25/191 (13%)	53/212 (25%)	
Duration of contact within 1 meter				
>60 minutes	396/590 (67%)	143/190 (75%)	121/205 (59%)	<0.001
>15 – 60 minutes	120/590 (20%)	23/190 (12%)	30/205 (15%)	
≤15 minutes	74/590 (13%)	24/190 (13%)	54/205 (26%)	
Sharing dishes or cups ^{c,d}				
No	361/601 (60%)	130/203 (64%)	200/226 (88%)	<0.001
Yes	240/601 (40%)	73/203 (36%)	26/226 (12%)	
Sharing cigarettes ^{c,e}				
No	586/600 (98%)	194/202 (96%)	223/226 (99%)	0.26
Yes	14/600 (2%)	8/202 (4%)	3/226 (1%)	
Washing hands ^{c,f}				
None	142/594 (24%)	16/203 (8%)	6/224 (3%)	<0.001
Sometimes	298/594 (50%)	99/203 (49%)	42/224 (19%)	
Often	154/594 (26%)	88/203 (43%)	176/224 (79%)	

Footnote of Table 3. P values were estimated using univariable multinomial logistic regression models. Missing values were imputed using the imputation model. Wearing masks incorrectly (i.e. not covering both nose and mouth) was considered as not wearing. ^a The state enterprise office was considered and included as a workplace. ^b Included restaurants, markets, malls, religious places, public places, households of index patients or other people but not living together, etc. ^c During the contact period. ^d Sharing dishes but using communal spoons all the time was considered as not sharing dishes. ^e Included sharing electronic cigarettes and any vaping devices. ^f Included washing with soap and water, and with alcohol-based solutions.

Table 4. Population attributable fraction (PAF) of risk factors for COVID-19 infection

Risk factors	Nightclub		Boxing stadium		Workplace		Household		Other places		Overall	
	Prev ^a	PAF ^b	Prev ^a	PAF ^b	Prev ^a	PAF ^b	Prev ^b	PAF ^b	Prev ^a	PAF ^b	Prev ^a	PAF ^b
Non-modifiable												
Female gender	0.51	0.08	0.13	0.002	0.40	0.03	0.68	0.09	0.40	0.08	0.45	0.03
Age group >15 years old	1.00	0.32	0.98	0.05	0.99	0.37	0.82	0.26	0.96	0.37	0.95	0.15
Modifiable												
Distance of contact <1 m ^c	0.88	0.71	0.98	0.19	0.65	0.72	0.87	0.68	0.85	0.76	0.82	0.40
Duration of contact within 1m >15 min ^c	0.86	0.55	0.99	0.11	0.70	0.57	0.91	0.53	0.91	0.64	0.85	0.29
Sharing dishes or cups ^{c,d}	0.34	0.10	0.30	0.01	0.19	0.06	0.57	0.11	0.26	0.13	0.33	0.04
Sharing cigarettes ^{c,e}	0.08	0.12	0.02	0.001	0.01	0.06	0	0	0.01	0.007	0.02	0.02
Not washing hands ^{c,f}	0.05	0.06	0.21	0.01	0.20	0.17	0.10	0.08	0.28	0.29	0.16	0.04
Not wearing masks all the time ^{c,g}	0.60	0.52	0.80	0.08	0.78	0.65	0.86	0.55	0.94	0.68	0.78	0.28
Sum of all modifiable risk factorsⁱ		0.98		0.75		0.98		0.97		0.99		0.84

Footnote of Table 4. ^a Prevalence (Prev) was estimated using the imputed data set. ^b PAF was estimated using the direct method (Supplementary Text). ^c During the contact period. ^d Sharing a dish but using communal spoons all the time was considered as not sharing a dish. ^e Included sharing an electronic cigarette and any vaping device. ^f Washing hands included washing with soap and water, and with alcohol-based solutions. ^g Wearing masks incorrectly (i.e. not covering both nose and mouth) was considered as not wearing. ⁱ Age and gender were considered as non-modifiable risk factors, while other risk factors were considered as modifiable. Total PAF was directly estimated using logistic regression in the form of natural logarithm; therefore, total PAF was not equal to the direct summation of PAF of each risk factor.

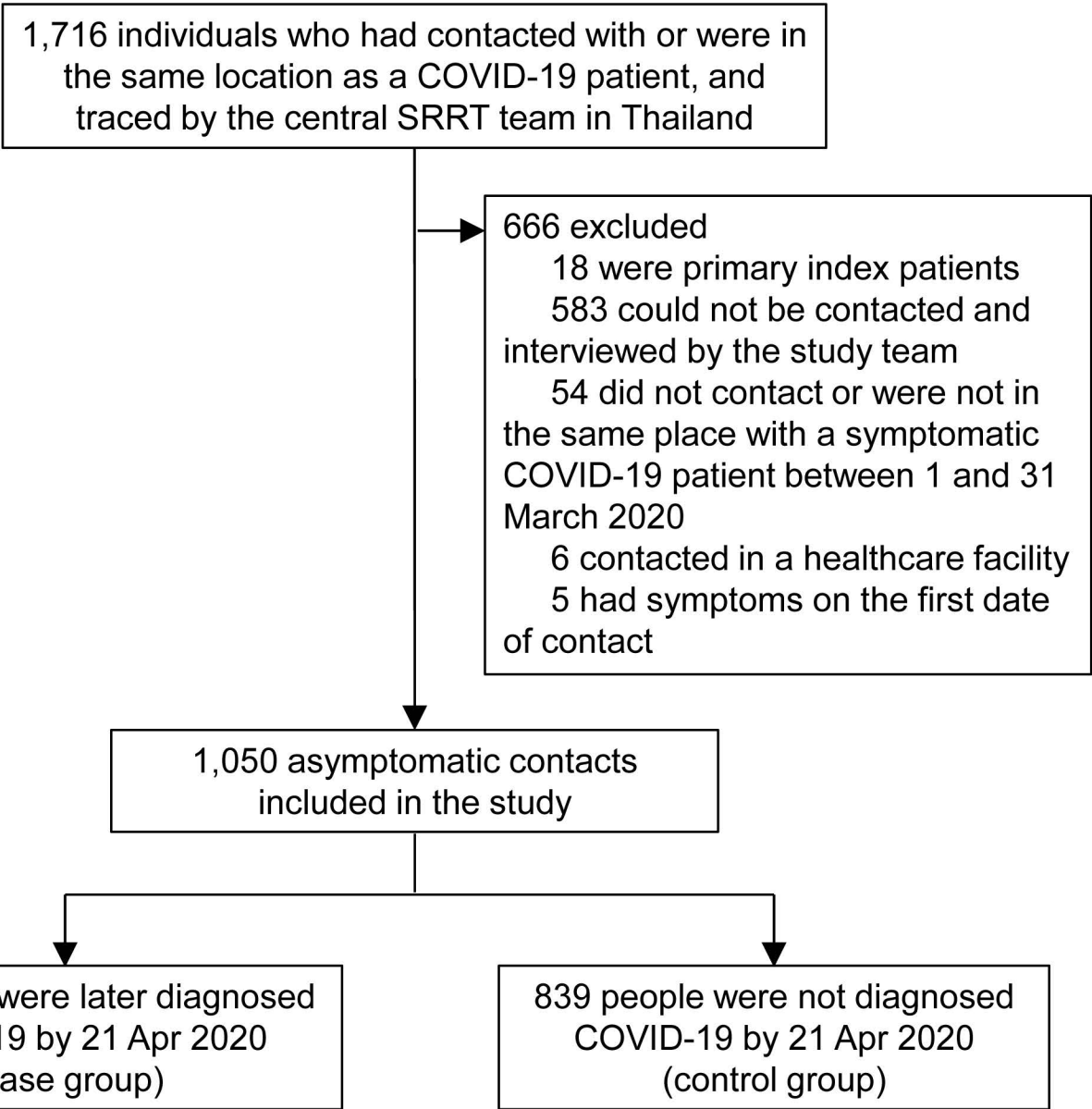
Figure legend

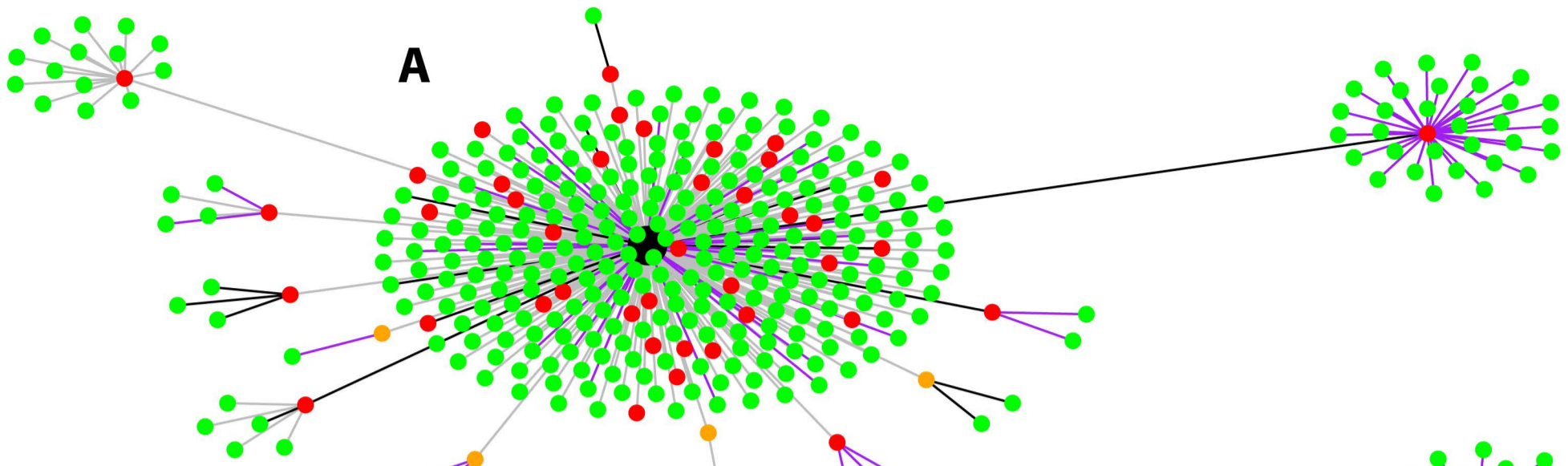
Figure 1. Study flow diagram

Footnote of Figure 1. SRRT= Surveillance and Rapid Response Team (SRRT), Ministry of Public Health (MoPH), Thailand

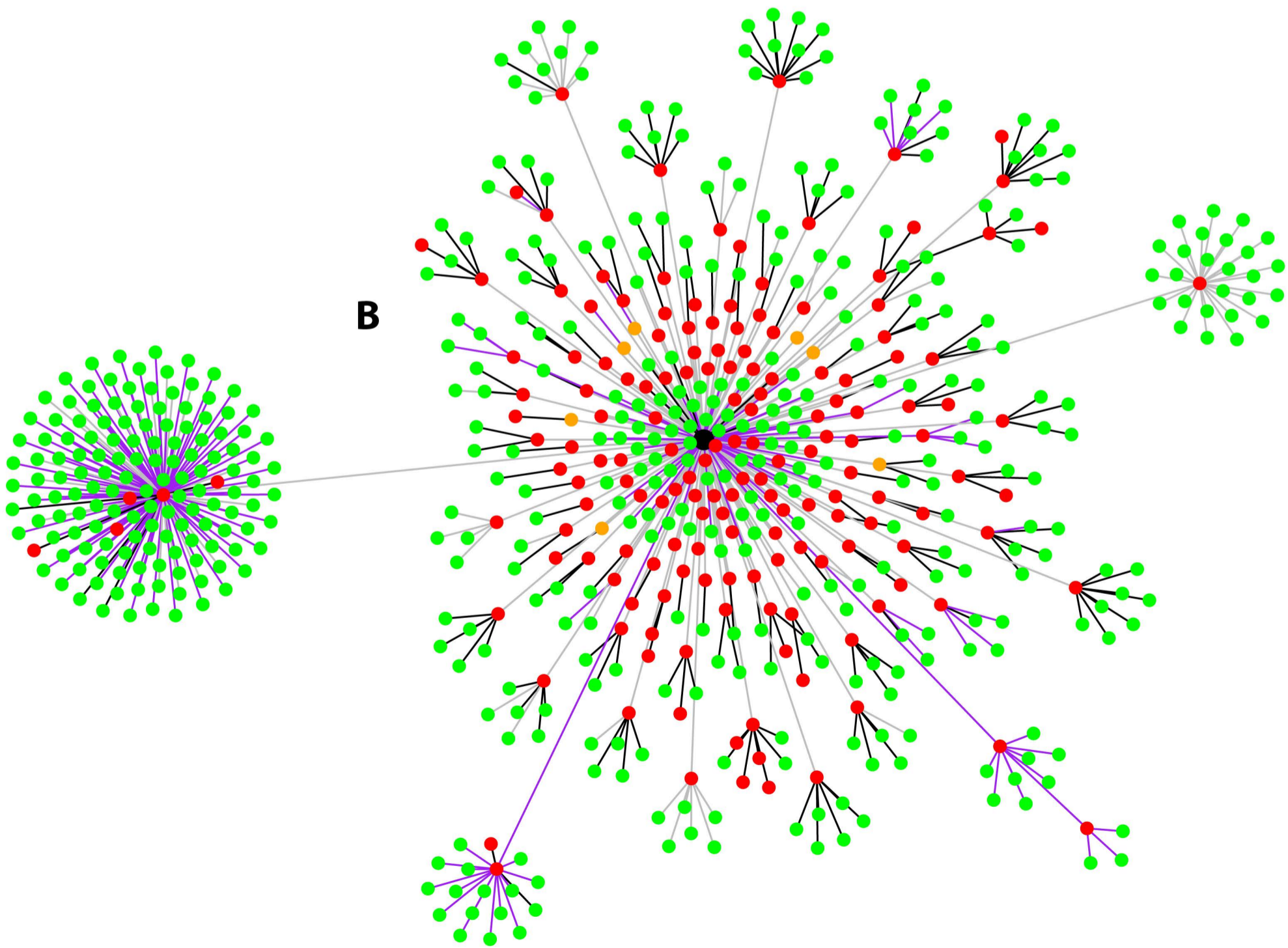
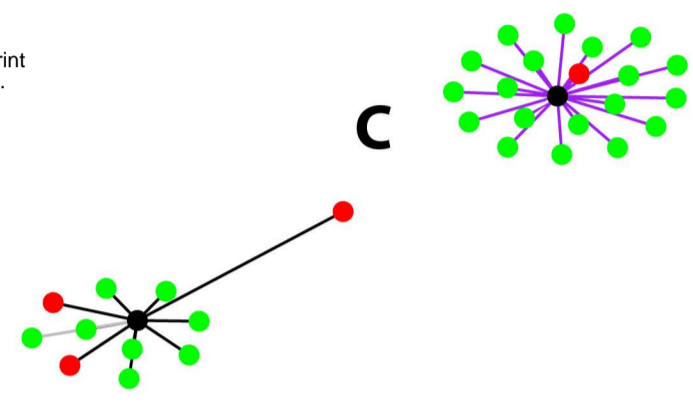
Figure 2. Development and transmission of COVID-19 among asymptomatic contacts included in the study

Footnote of Figure 2. A, B and C represent the nightclub cluster, boxing stadium cluster and state enterprise office cluster, respectively. Black nodes represent primary index patients, red dots represent cases, and green dots represent controls. Orange dots represent index patients (confirmed COVID-19 patients) who could not be contacted by the study team. Black lines represent household contacts, purple lines represent contacts at workplaces and gray lines represent contacts at other locations. Definition of index patients, cases and controls are listed in Table 1.





medRxiv preprint doi: <https://doi.org/10.1101/2020.06.11.20128900>; this version posted June 19, 2020. The copyright holder for this preprint (which was not certified by peer review) is the author/funder, who has granted medRxiv a license to display the preprint in perpetuity. It is made available under a [CC-BY 4.0 International license](https://creativecommons.org/licenses/by/4.0/).



Supplementary Text

Supplementary Methods

Study design and participants

Contacts were classified by MoPH as high-risk contacts if they were family members or lived in the same household as a COVID-19 patient, if they were within 1-meter distance longer than 5 minutes of a COVID-19 patient, if they were exposed to cough, sneeze or secretions of a COVID-19 patient and were not wearing a protective gear, such as mask, or if they were in the same closed environment (e.g. room, nightclub, stadium, vehicle) within 1-meter distance longer than 15 minutes of a COVID-19 patient and they were not wearing a protective gear, such as mask.^{12,13} Contacts were classified as low-risk contacts if they had activities together with or were in the same locations as a COVID-19 patient, but did not fulfil the criteria of a high-risk contact.^{12,13} All high-risk contacts with any symptoms were tested with a PCR assay and quarantined in a hospital or a quarantine site.^{12,13} All high-risk contacts without any symptoms were self-quarantined at home.^{12,13} Before 23 March 2020, all high-risk contacts without any symptoms were tested using PCR assays on day 5 after the last date of exposure to a case.¹² As of 23 March 2020, all household contacts were tested using PCR assays regardless of their symptoms. Other high-risk contacts were tested only if they developed any COVID-19 symptoms.¹³ All low-risk contacts were recommended to perform self-monitoring for 14 days, and visit healthcare facilities immediately for PCR-assays if they develop any symptoms of COVID-19.^{12,13}

Statistical analysis

To respond to the national policy, we estimated direct population attributable fraction (PAF) using the imputed dataset and the direct method as previously described.^{27 28} Direct PAF can be obtained

by calculating PAFs directly from individuals' data using logistic regression.^{27 28} First, we had to modify our final logistic regression model by considering each risk factor dichotomously. Then, irrespective of exposure to each risk factor for each individual, that factor was removed from the population by calculating probability based on all observations as unexposed. The predicted probability of developing COVID-19 infection for each asymptomatic contact, with the assumption that there was no exposure to a certain risk factor, is:

$$P_{ki} = \frac{1}{1 + \exp[-(\beta_0 + \sum_{j \neq i} \beta_j x_j)]}$$

P_{ki} is representative of predicted probability of COVID-19 infection in individual asymptomatic contact k , assuming no exposure to a specific risk factor (x_i); β_j indicates the regression coefficient of risk factor (x_j), except risk factor number i (x_i). Subsequently, the sum of all predicted probabilities for all individuals in the study would be equal to adjusted estimate of total cases, which is anticipated in the absence of that specific risk factor (x_i).

Then, PAF was estimated by subtraction of the total number of predicted cases from total number of observed cases, divided by the total number of observed cases:

$$PAF = \frac{\text{Total number of observed cases} - \text{Total number of predicted cases}}{\text{Total number of observed cases}}$$

Supplementary Results

For the pub cluster, we identified 11 primary index patients who started having symptoms from 4 to 8 March and were diagnosed (and isolated) from 3 to 10 March (Supplementary Figure 1). Those primary index patients visited multiple nightclubs included in the analysis during the study period, and 35 of 228 (15%) asymptomatic contacts at nightclubs had PCR-confirmed COVID-19 infections after the contact (Figure 2, Cluster A).

For the boxing stadium cluster, we identified 5 primary index patients who started having symptoms from 6 to 12 March and were diagnosed (and isolated) from 11 to 21 March (Supplementary Figure 2). Those primary index patients visited multiple boxing stadiums included in the analysis during the study period, and 125 of 144 (87%) asymptomatic contacts at the boxing stadiums had PCR-confirmed COVID-19 infections after the contact (Figure 2, Cluster B).

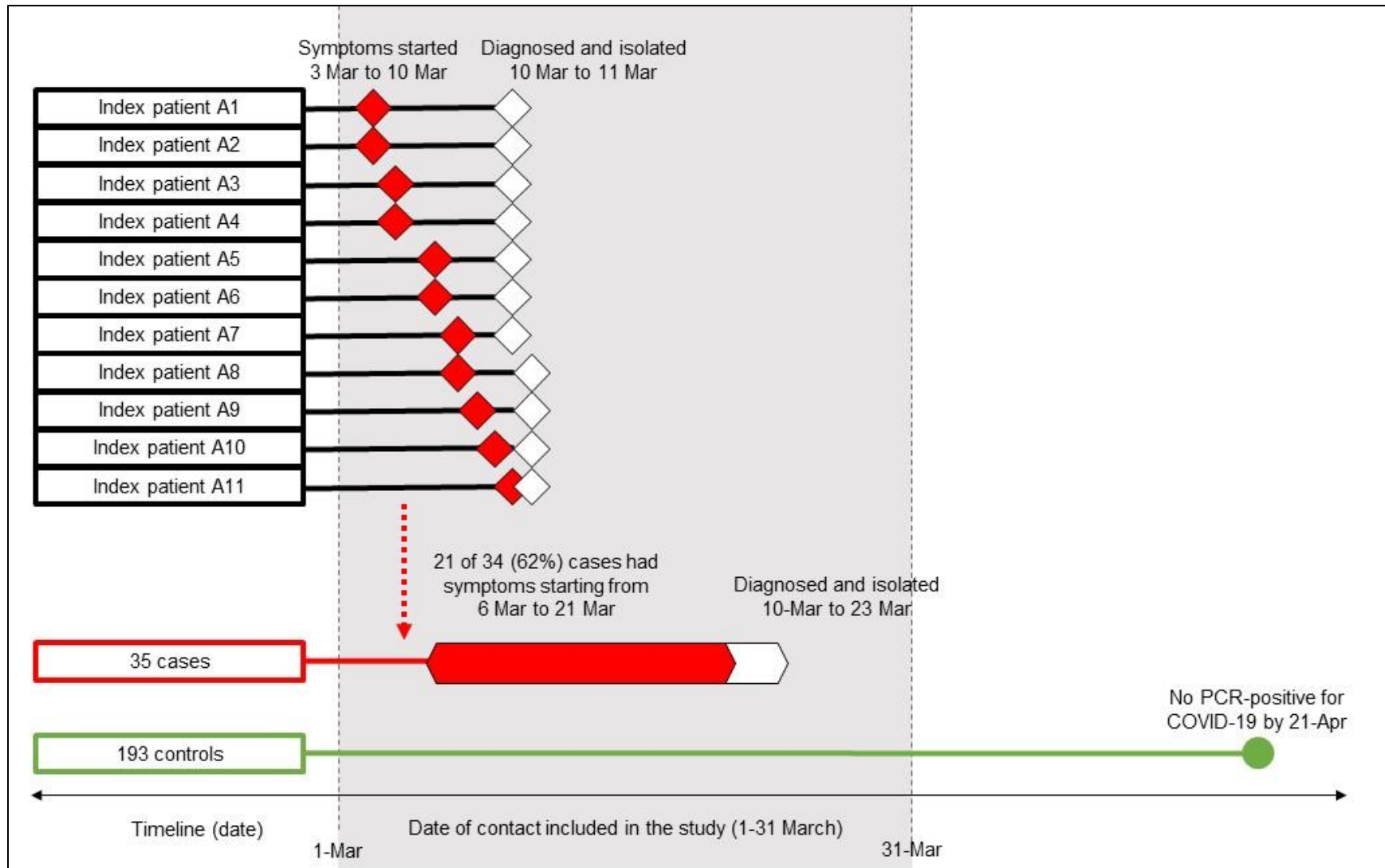
Of the two primary index patients for the office cluster; one had had symptoms since 15 March 2020 (Primary index patient C1 in Supplementary Figure 3) and was considered as the source of infection to one new case in the office during the study period. The other primary index patient (Primary index patient C2 in Supplementary Figure 3) was a household member of a staff at the office, and was considered as the source of infection to that staff via household contact.

Supplementary Table 1. Factors associated with COVID-19 infections in a multivariable model including type of mask

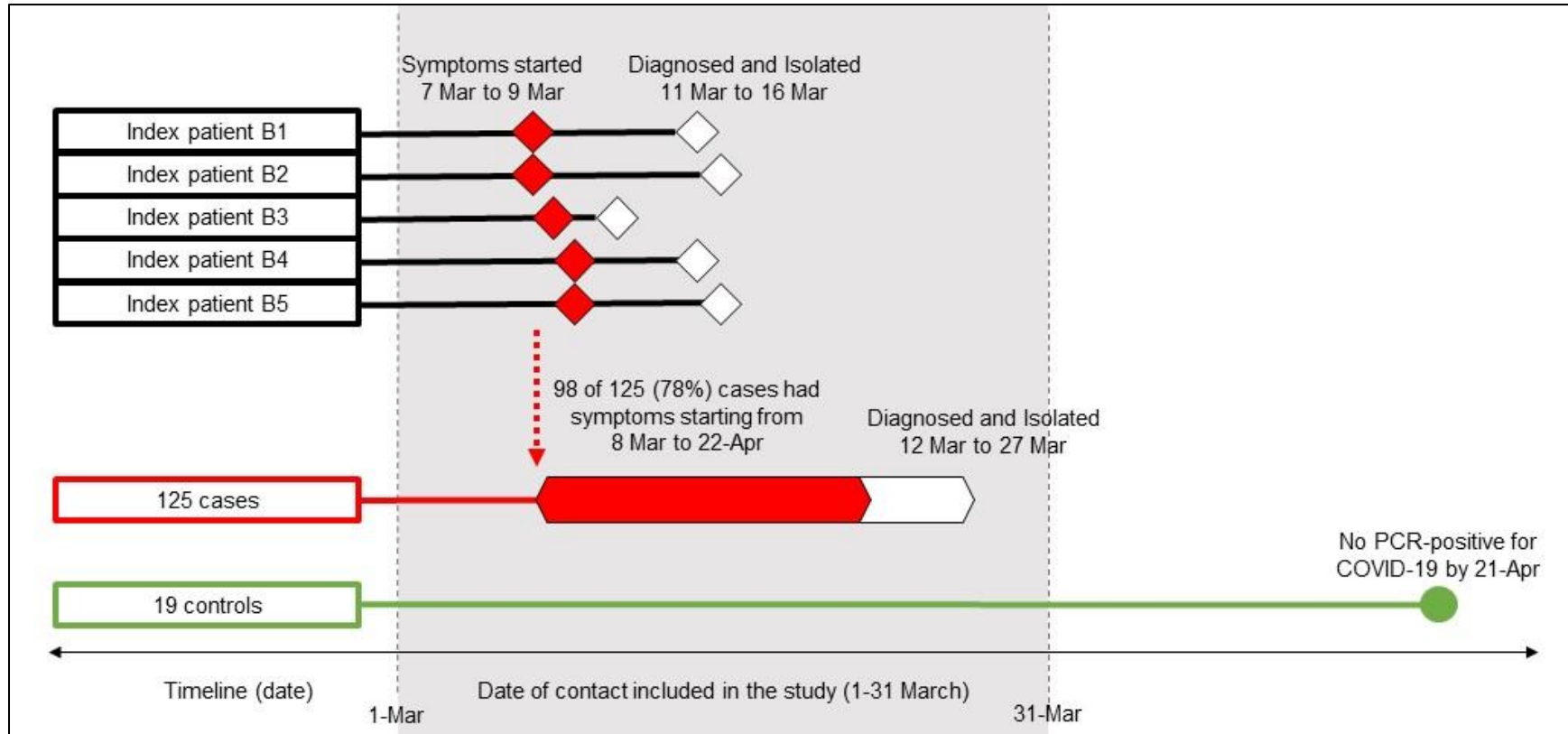
Factors	Adjusted odds ratio (95% CI)^a	P
Male gender	0.75 (0.40-1.38)	0.35
Age group		
≤15 years old	0.55 (0.14-2.15)	
>15 – 40 years old	1.0	
>40 – 65 years old	1.76 (0.93-3.31)	
>65 years old	1.00 (0.23-4.34)	
Contact place^b		
Nightclub	Not applicable ^c	-
Boxing stadium		
Workplace		
Household		
Others		
Shortest distance of contact		
Physical contact	1.0	0.02
≤1 meter without physical contact	1.07 (0.56-2.01)	
>1 meter	0.15 (0.04-0.63)	
Duration of contact within 1 meter		
>60 minutes	1.0	0.09
>15 – 60 minutes	0.66 (0.28-1.52)	
≤15 minutes	0.24 (0.06-0.91)	
Sharing dishes or cups^{d,e}		
No	1.0	0.39
Yes	1.32 (0.69-2.52)	
Sharing cigarettes^{d,f}		
No	1.0	0.03
Yes	3.46 (1.09-10.98)	
Washing hands^{d,g}		
None	1.0	0.04
Sometimes	0.33 (0.14-0.79)	
Often	0.33 (0.13-0.88)	
Wearing masks^{d,h}		
Not wearing masks	1.0	0.55
Wearing Non-medical masks	1.30 (0.48-3.47)	
Wearing Non-medical and medical mask alternately	1.04 (0.26-4.14)	
Wearing Medical masks	0.62 (0.25-1.52)	
Wearing masks all the time^{d,h}		
No	1.0	0.006
Yes	0.31 (0.12-0.80)	

Footnote of Supplementary Table 1. ^a Both crude and adjusted odds ratios were estimated using logistic regression with a random effect for location and a random effect for index patient nested within the same location. Missing values were imputed using the imputation model. ^b The state enterprise office was considered and included as workplaces. Others included restaurants, markets, malls, religious places, households of index patients or other people but not living together, etc. ^c Location was included in the model as a random effect variable. ^d During the contact period. ^e Sharing dishes but using communal spoons all the time was considered as not sharing dishes. ^f Included sharing electronic cigarettes and any vaping devices. ^g Included washing with soap and water, and with alcohol-based solutions. ^h Wearing masks incorrectly (i.e. not covering both nose and mouth) was considered as not wearing.

Supplementary Figure 1. Timeline and possible transmission of primary index patients of the pub cluster



Supplementary Figure 2. Timeline and possible transmission of primary index patients of the boxing stadium cluster



Supplementary Figure 3. Timeline and possible transmission of primary index patients of the state enterprise office cluster

