

When is SARS-CoV-2 in your shopping list?

Gustavo Hernandez-Mejia^{1,3} and Esteban A. Hernandez-Vargas^{2,1,*}

¹Frankfurt Institute for Advanced Studies, Frankfurt am Main, Germany

²Instituto de Matemáticas, Universidad Nacional Autónoma de México, Boulevard Juriquilla 3001, Santiago de Querétaro, Qro., 76230, México

³Faculty of Biological Sciences, Goethe University, Frankfurt am Main, Germany

*esteban@im.unam.mx

ABSTRACT

The pandemic of coronavirus disease 2019 (COVID-19) has caused, by May 24th 2020, more than 5.3 million confirmed cases worldwide. The necessity of keeping open and accessible public commercial establishments such as supermarkets or pharmacies increases during the pandemic provided that distancing rules and crowd control are satisfied.

Herein, using agent-based models, we explore the potential spread of the novel SARS-CoV-2 considering the case of a small size supermarket. For diverse distancing rules and number of simultaneous users (customers), we question flexible and limited movement policies, guiding the flow and interactions of users in place. Results indicate that a guided, limited in movement and well-organized policy combined with a distance rule of at least 1 m between users and a small number of them (15) may aid in the mitigation of potential new contagions in more than 90% compared to the usual policy of flexible movement with more users (30) which may reach up to 64% of mitigation of potential new infections under the same distancing conditions. This study may guide novel strategies for the mitigation of the current COVID-19 pandemic, at any stage, and prevention of future outbreaks of SARS-CoV-2 or related viruses.

1 Introduction

2 The world is currently impacted by the coronavirus disease 2019 (COVID-19) pandemic which is caused by the severe acute
3 respiratory syndrome coronavirus 2 (SARS-CoV-2) that, by May 24th 2020, has caused more than 5.3 million confirmed cases.
4 Many authorities at the global level have adopted measures known as "physical distancing" or "social distancing" (SD) which
5 go from schools and workplaces closure to limiting gatherings, quarantining infected individuals and their family members
6 and self-quarantining to avoid getting infected^{1,2}. Besides, hygiene measures have been large recommended, these include
7 washing hands, covering up when coughing or sneezing, and avoid touching the face with unwashed hands since these may be
8 frequently touched by other potentially infected people. One of the first reported studies of the potential effect of SD strategies
9 on COVID-19 burden was developed in Singapore³ and the interventions continued in other several European countries⁴. The
10 objective of the SD interventions is to decelerate the spread of infection and reduce the intensity of the epidemic to avoid
11 potential overwhelming health systems and, at the same time, gain a time-line to develop treatments and vaccines. However,
12 a matter of consideration is that these interventions may hold for long periods with certain relaxing phases as population
13 immunity gradually increases allowing the measures to loosen^{1,5}. There is still limited evidence to support SD measures as
14 schemes of reducing transmission and slowing down the spread, however, accessible evidence may suggest that staggered
15 and cumulative implementation of these interventions, in conjunction with testing and contact tracing of all suspected cases⁶
16 following close scientific and ethical basis, show the most effective outcome against COVID-19⁷⁻⁹.

17 One of the most important players of goods supply chains for the population, as well as key social encounter places, are
18 public commercial establishments. Supermarkets, pharmacies, grocery stores, discount stores, and other commercial chains can
19 act as a route of spread for both, clients (users) and place workers¹⁰. Public commercial establishments are generally enclosed
20 places usually with one entrance and one exit gates that under normal situations, SD measures and the number of users has no
21 relevance. Inside the establishment, users freely interact with each other following pretty well-defined trajectories as those of
22 supermarket corridors. In this manner, users and working personnel in place can be characterized in terms of their movements
23 when following the corridors as well as their physical interactions and the physical distance between and among them, under a
24 physical metric. In this direction, agent-based (AB) modeling schemes can map all desired characteristics of users and workers,
25 the agents, and their interactions in the establishment's corridors, identified as agents' trajectories or paths. AB schemes have
26 previously been used to devise strategies on health behaviors, social epidemiology¹¹, and to advise on the mitigation of previous
27 influenza outbreaks¹² as well as to explore immune responses to this virus¹³. Under this approach, AB schemes are also to be
28 employed for testing population strategies for enclosed environments for the coronavirus pandemic¹⁴ that may add to the forces
29 of non-pharmaceutical interventions¹⁵ especially in high-density population places, like urban scenarios¹⁶. Moreover, since
30 specific conditions and characterizations can be implemented for agents and trajectories, diverse behavioral aspects can be
31 designed and tested, for instance, the checkout area design of a supermarket to model the users flow and guidance strategies¹⁷.

32 Herein, we explore the potential spread of the novel SARS-CoV-2 in public commercial establishments using an AB
33 approach. We analyze diverse distancing rules between users and different population sizes in a layout that represents a

34 small-to-medium size supermarket. Also, we test flexible and limited movement policies that guide the flow and interactions of
 35 users inside the supermarket. Results indicate that a guided, limited in movement and well-organized policy may significantly
 36 collaborate into the mitigation of potential new contagions of SARS-CoV-2 in public commercial establishments.

37 Methods

38 Commercial establishment layout

39 We consider a general layout of a public commercial establishment, in this case, a small-to-medium size supermarket structure.
 40 The considered dimensions of the establishment may also be suitable for pharmacies, discount markets, and convenience stores.

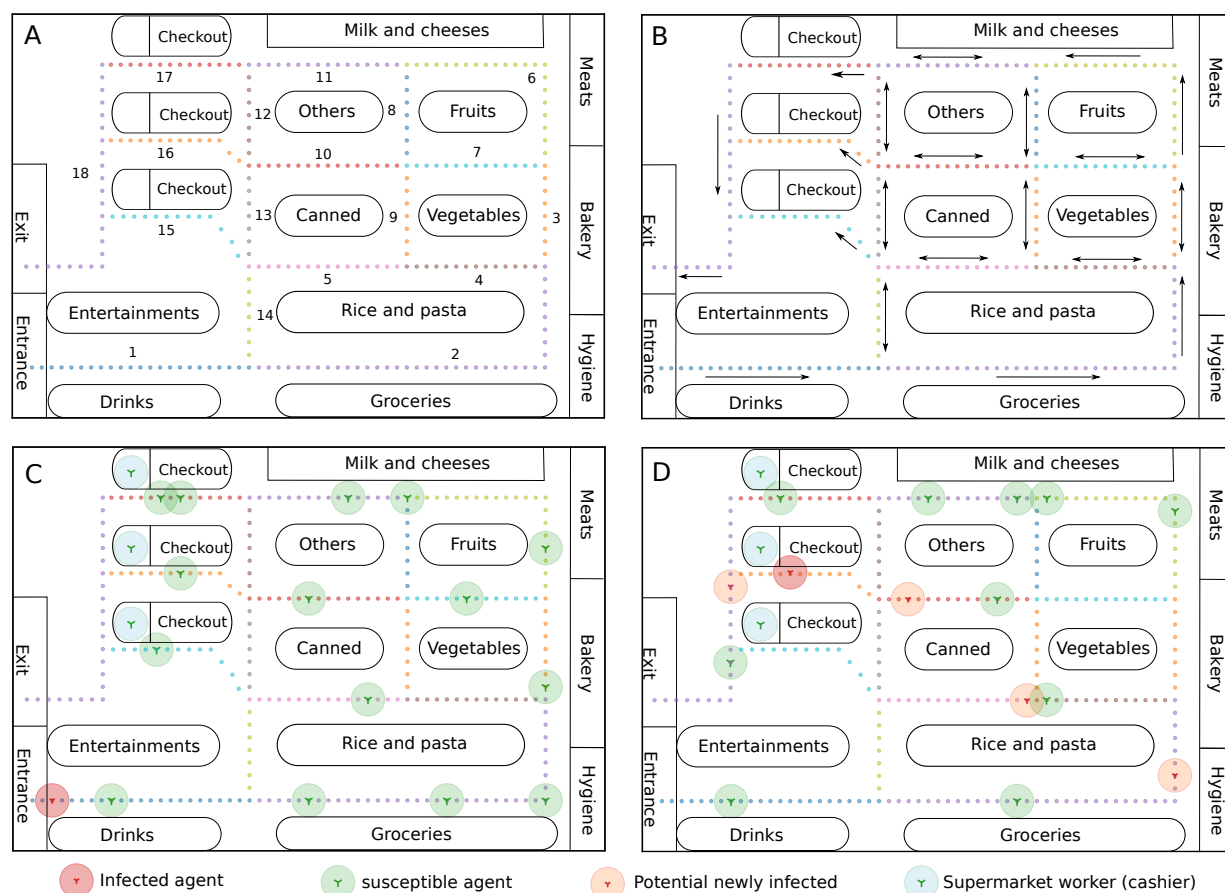


Figure 1. Supermarket layout and spread model. A) Corridors in the layout (paths) are highlighted with dot-colored (marks) lines, showing the routes that agents can follow, also, the identifier number of each corridor is shown. The layout represents a small to medium size supermarket of 30×16 m. In this case example, the distance between marks is 50 cm (distancing rule). Since this is a general layout, the labels of the areas of the supermarket can be modified for a more suitable representation. B) Supermarket layout with arrows indicating the directions that each path can handle, some of them are bidirectional, some others unidirectional. C) Agents are divided into four subsets, susceptible (green), potential newly infected agents (orange), workers of the supermarket (cashiers, blue), and the infected agent (red). All agents, except the cashiers, can freely move all around the supermarket using and standing over the marks of the paths, therefore, the distance between agents is given by the separation of the marks of the paths. The layout shows the initial allocation of all agents considering that an infected agent enters the supermarket and moves around it following the paths. D) The infected agent is now in the checkout area after some movements in the layout, four potential newly infected agents have been produced.

41 Figure 1 depicts the considered structure, accounting for one entrance access and one exit. Corridors and shelves are
42 distributed within the supermarket in such a manner that the users can freely move through them, avoiding bottlenecks. Figure
43 1-A shows the corridors marked with dot-colored lines and an identifier number. The marks stand for the distancing rule of an
44 agent when moving, although it is also allowed that more than one agent can stand in the same mark as they freely move. All
45 paths are designed following this metric to map all the supermarket corridors. Figure 1-B shows the directions that agents can
46 follow on each corridor highlighting the routes available when moving on the layout. Whenever an agent reaches the end of
47 a corridor and can take more than one corridor to continue, it selects the next one based on a probability of selection (50%)
48 with a binomial distribution. We consider three checkout stations operating with one supermarket worker (cashier) per station.
49 As shown in Figure 1, the labels on the shelves indicate a general conception of the supermarket areas, these can naturally be
50 named differently. The model is rendered in a Cartesian layout where each agent is represented through its x - and y -coordinates
51 that change as the agent moves through the supermarket paths.

52 Spread model

53 The model considers the uninfected (U) and infected (I) populations, represented by agents U_j and I_i , respectively. We consider
54 a potential contagion from an infectious agent to have a probability of spread (P_{Spread}) of 50% with a binomial distribution.
55 The spread is also governed by the "physical" distance (Euclidean distance, $EUC(I_i, U_j)$) between the infectious agent I_i and
56 the uninfected one U_j . A potential contagion must therefore first satisfy a minimum distance threshold (M_D) between agents
57 and a positive outcome of the binomial probability. The simulation initiates with a fixed population size $N = U + I$ and, each
58 potential newly infected agent is taken from the U -population and appended to the I -population.

59 A case example with an initial allocation of 15 uninfected users, three cashiers and one infected user is shown in Figure 1-C.
60 This presents a case in which the infected agent (user) enters the supermarket and starts moving using the paths following the
61 directions of Figure 1-B, all other agents also move and can leave the supermarket. Those agents that leave the supermarket,
62 infected or uninfected, are replaced by uninfected agents. After some movements inside the supermarket, the infected agent is
63 on the checkout area and has had potential contagion with at least four other uninfected agents, as shown in Figure 1-D. A
64 case example with an initial allocation of 15 uninfected users, three cashiers and one infected user is shown in Figure 1-C.
65 This presents a case in which the infected agent (user) enters the supermarket and starts moving using the paths following the
66 directions of Figure 1-B, all other agents also move and can leave the supermarket. Those agents that leave the supermarket,
67 infected or uninfected, are replaced by uninfected agents. After some movements inside the supermarket, the infected agent is
68 on the checkout area and has had potential contagion with at least four other uninfected agents, as shown in Figure 1-D. Finally,
69 the simulation steps are as follow: all agents move from the initial allocation to the immediate next one (agent steps) according
70 to the distancing rule and the corridor direction, the minimum distance threshold and contagion probability are checked (all
71 uninfected agents respect to the infectious), potential newly infected are generated if applicable, and all agents move again.
72 The simulation stops when the infectious agent reaches a maximum number of agent steps or leaves the supermarket. The
73 maximum number of steps also allows representing the spent time in the supermarket this can go from 15 to 40 minutes.

74 Results

75 Flexible movement policy

76 We aim to test the impact of different distancing rules and population sizes on the generation of potential newly infected.
77 Therefore, we test 5 distancing rules, 30 cm, 50 cm, 1 m, 1.5 m, and 2 m. Besides, we test populations of 15, 20, 30, and
78 50 uninfected agents. In all cases, we account for 3 cashiers and one infected agent. The minimum distance threshold is 1.5
79 m. We perform 1000 simulations per case registering the number of potential newly infected cases as well as the percentage
80 of repetition (frequency) of each case for all the distancing rules and population sizes. We identify this test as the flexible
81 movement policy, as all agents can move using the directions of Figure 1-B with almost no movement limitations. The results
82 with the number of potential newly infected from all simulation cases and the total of potential newly infected are depicted in
83 Figure 2.

84 The distribution of the percentage of repetition of cases greatly varies with respect to the number of potential newly infected
85 agents as the population size increases. The distribution of cases considering 15 and 20 uninfected agents, the red and green
86 histograms, show similar behavior in all distancing rules. Using the rules of 30 cm to 1 m (Figure 2-A-C), for instance, the
87 shape of the histograms show a uniform tendency while for rules of 1.5 and 2 m both histograms present a higher percentage of
88 repeated cases for up to 5 newly infected. However, this is not the case when comparing with the 30 agents histogram (yellow),
89 in which all cases present a bimodal distribution with peaks around 5 to 10 and 20 to 25 newly infected agents. This behavior
90 may be reflecting the separation of cases in which the infectious agent spends less time in the supermarket compared to those
91 cases spending more time since the interaction with other agents is also being reduced. Similarly, the distribution of the 50
92 agent histograms presents two peaks in all distancing rules, the first shape peaking from 5 to 15 newly infected and the second
93 shape peaking from 45 to 50 newly infected agents.

94 The distancing rule may weakly affect the total of potential newly infected, however, the smaller uninfected populations may
95 add to the mitigation of potential contagions. In Figure 2-F, the total number of potential contagions present slight differences
96 between distancing rules for populations of up to 20 agents, both cases with around 10 thousand (10 K) total cases. In the case
97 of 30 agents, the total of potential contagions remains around 20 K in all distancing rules, and, for 50 agents, the total reaches
98 almost 40 K of potential newly infected. The greater difference in the number of potential newly infected agents relies on
99 keeping the population inside the supermarket to be less than 30 users, preferably between 15 and 20 users.

100 Limited movement policy

101 We further test a limited movement policy aiming to explore the impact on the potential contagions mitigation. The distancing
102 rules remain as in the flexible movement policy, however, the corridors' usage directions and some access to corridors are
103 limited. Figure 3-A shows the framework of the limited movement policy in which the identifier number of each corridor
104 remains as those in Figure 1-A, however, the access to corridor 14, for instance, is fully restricted. There are some corridors in
105 which a user can enter but not exit to the same corridor, for instance, corridor 7 can be accessed from corridor 3 but can not

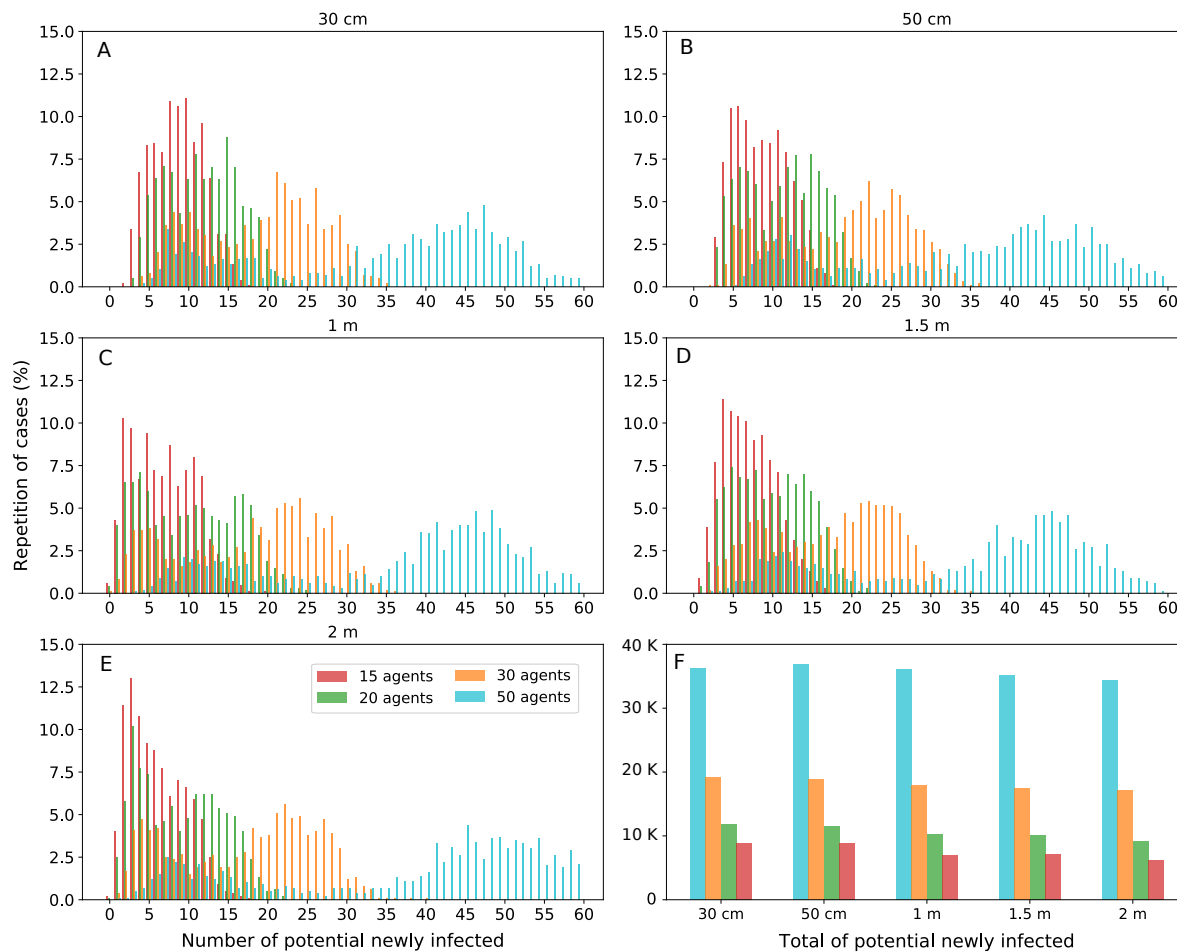


Figure 2. Flexible movement policy with potential newly infected agents considering different distancing rules and population sizes. Each panel presents the distribution of the number of potential newly infected agents and the percentage of case repetition for populations of 15 (red) 20 (green) 30 (yellow) and 50 (blue) uninfected agents and three cashiers. A-E) The distancing rules are indicated on top of panels. Each distribution case reports the results of 1000 simulation. F) The total of the potential newly infected agents for each case of population size and distancing rules.

106 return to corridor 3 or 6. If corridor 7 is accessed from corridors 8 or 9, the user must return to use one of these corridors. These
 107 rules are indicated by the oval arrows and elbow arrows in Figure 3-A and pretend to guide users' flow.

108 The general behavior depicts that accounting for the same initial users' allocation shown in Figure 1-C, users interact with a
 109 limited number of other users, mostly with those who entered the supermarket. A case example is depicted in Figure 3-B where
 110 the infectious agent leaves the supermarket and produced three potential newly infected agents that also are about to leave the
 111 supermarket. No other newly infected agent is found out of the checkout area and those agents in the remaining areas are all
 112 susceptible.

113 Results of the limited movement policy are shown in Figure 4 accounting for the same distancing rules and population sizes
 114 as in the flexible movement framework. Using the limited movement policy, the distribution shape of potential newly infected
 115 agents shows to follow a gamma distribution shape when exploring up to 30 susceptible agents for all of the distancing rules,
 116 generally peaking from 0 to 5 potential new contagions when using up to 20 susceptible agents. The distribution of cases using

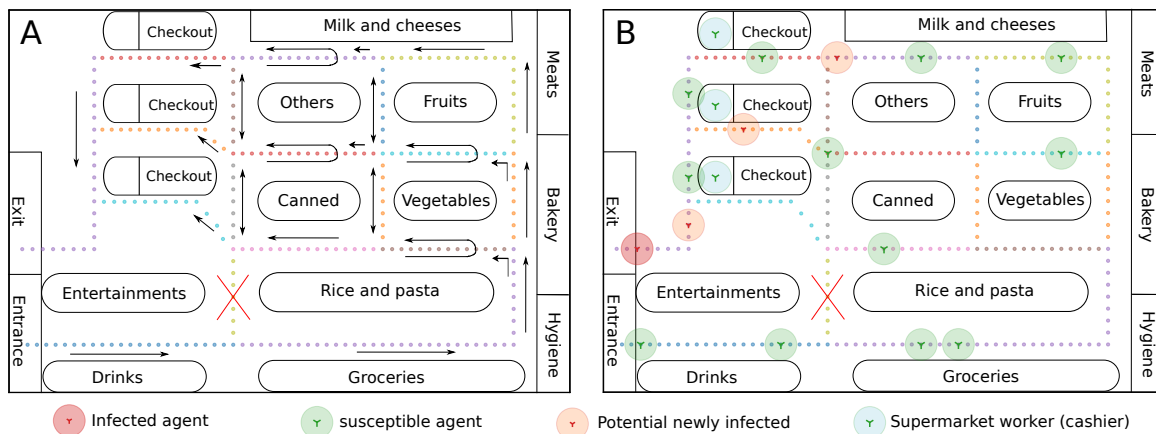


Figure 3. Limited movement policy layout. A) The corridors conserve the same identification number as in Figure 1-A as well as the dotted lines indicating the distancing rule of the paths. The corridors also show the new movement policy highlighted by oval, elbow, unidirectional and bidirectional arrows all over the supermarket layout. Some corridors like the number 8 and 9, for instance, remain in a bidirectional policy while others like 4 and 7 now present an oval arrow policy. The last indicates that these corridors can be, for example, accessed from corridor 3 but no return can be made to this corridor. Also, corridors 4 and 7 can be accessed from corridors 8 and 9, and users must return to use one of these corridors. Lastly, corridor 14 is no longer available. B) The last steps of a case example simulation accounting for 15 susceptible agents and the limited movement policy, the initial allocation of agents is similar to the one in Figure 1-C. In this case, the newly infected agents remain closer to the infectious agent, in the checkout area, since agents follow the guidance rules.

117 30 agents peaks from 0 to 10 potential new contagions. The frequency of cases also reached 10% more repetition of cases for
 118 the tests with populations of 15 and 20 agents, compared to the flexible movement test. For the case of 50 susceptible agents,
 119 the distribution shape is mostly uniform with less than 10% of repetition cases reported. Importantly, the total of potential
 120 newly infected remains in less than 10 K in all distancing rules for the tests with 15 and 20 agents. For the case of 30 agents,
 121 the total potential contagions are above 10 K for the distancing rules of 30 and 50 cm, however, potential contagions are below
 122 10 K when the distancing rule is of at least 1 m. Finally, the case with 50 agents shows to produce more than 20 K potential
 123 new contagions in all distancing rules.

124 For a clearer comparison and appreciation of the tested policies we show in Figure 5 the histograms of both, flexible and
 125 limited movement policies. The histograms report the total of potential contagions for all population sizes and distancing rules.
 126 Considering the flexible policy, the ideal distancing rule may be at least 1.5 m between users and up to 15 users at a time.
 127 However, when using the limited movement framework, the number of users can be increased to 20. A similar panorama can be
 128 observed for 30 users since the distancing rules do not present great variation among them in the total of potential contagions,
 129 however, contagion mitigation can benefit from the limited movement approach since the total number of potential contagions
 130 can be reduced for up to 10 K compared to the flexible movement policy, combined with a distancing rule of at least 1.5 m.
 131 In a similar direction, the maximum number of possible contagions is observed when 50 users simultaneously interact in the
 132 establishment, with a similar impact of the limited movement policies on the potential new contagions, respect to the 30 users
 133 case. On average, up to 10 K fewer cases can be reached with the limited movement policy, compared to the flexible movement
 134 approach. However, the size of the population may prevent the benefit from further distancing rules and movement policies.

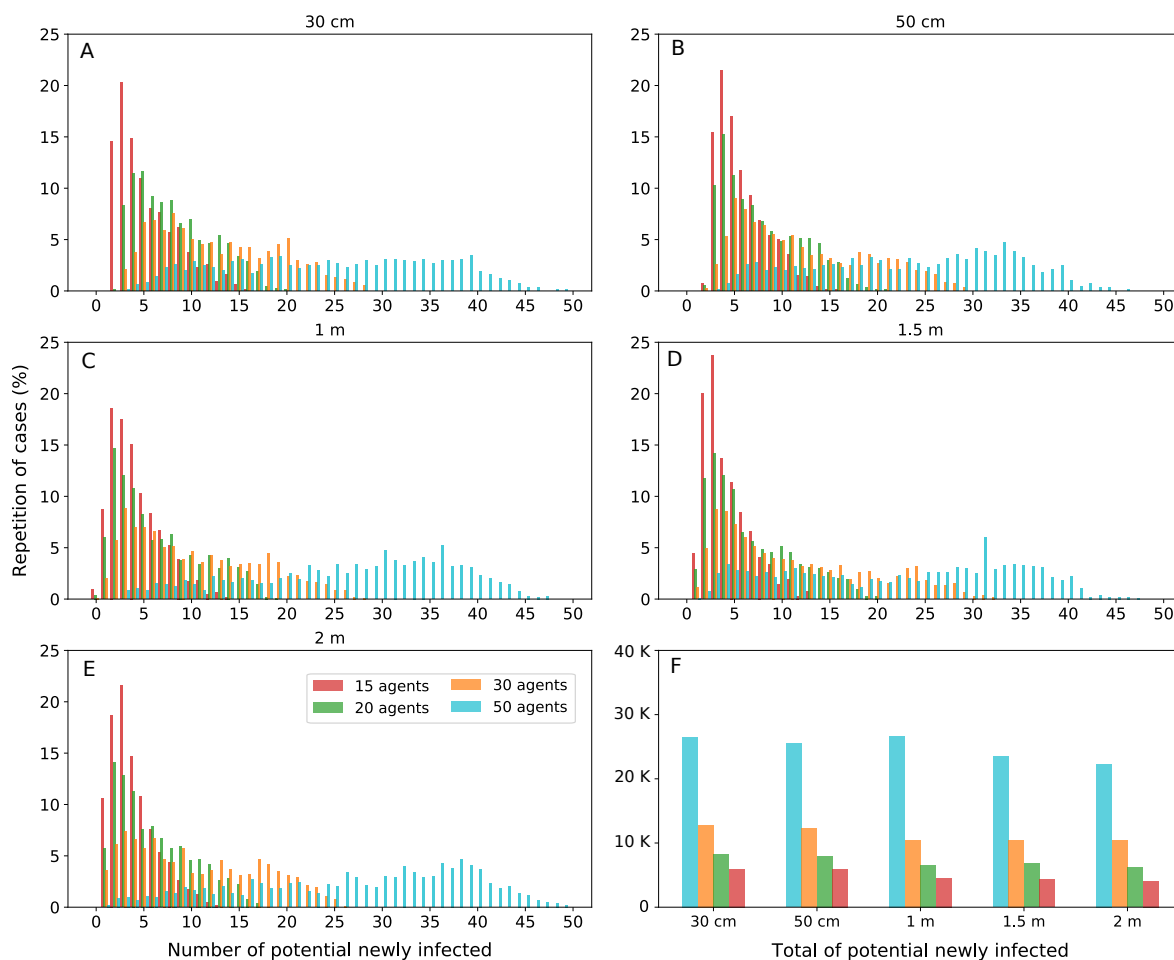


Figure 4. Limited movement policy results. The number of potential newly infected agents and case repetition percentages for different population sizes considering distancing rules of A) 30 cm, B) 50 cm, C) 1 m, D) 1.5 m, and E) 2 m. Each distribution case reports the results of 1000 simulations with populations of 15 (red), 20 (green), 30 (yellow), and 50 (blue) uninfected agents, and three cashiers. F) The total of the potential newly infected agents for each case of population size and distancing rules with the limited movement approach.

135 We further analyze the impact of the tested schemes on reducing the viral spread through the percentage of mitigation
136 of potential contagions, as reported in Table 1. In this approach, we consider that a population of 50 users is to enter the
137 supermarket, however, we explore different cases using the complete population or subsets of it to enter the supermarket at a
138 time. Accounting for the simulations results in Figure 5, we compute the mitigation benefit as the percentage of users that
139 remain susceptible after each of the performed simulations for both policies, flexible and limited movement. The distancing
140 rules and the fraction of users (number of users) remain as in Figure 5. The number of users remains constant as those that
141 leave the supermarket, potentially infected or not, are replaced by susceptible users.

142 The lowest percentage of mitigation of potential contagions is observed, as expected, whenever the complete population (50
143 users) accumulates inside the establishment for the distancing rule of 30 cm with the flexible movement policy, with only 27.4%
144 of potential spread mitigation. Since the establishment is considered to be crowded, the distancing rules may have a negligible
145 impact on the spread mitigation, reaching a mild 31.2% of potential mitigation with 2 m distancing. On the other hand, if

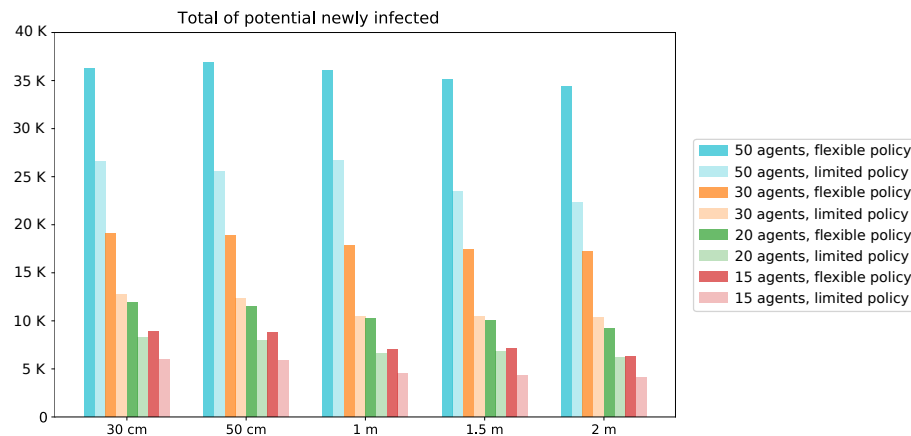


Figure 5. Comparison of flexible and limited movement policies. The histograms show the total number of potential newly infected for all population sizes and distancing rules in the test. The flexible movement policy histograms are depicted with darker colors, reporting the data of Figure 2-F. The limited movement framework is depicted with lighter color histograms and report data of Figure 4-F.

146 the limited movement policy is considered, the mitigation of potential spreads reaches more than 50% for distancing rules of
147 at least 1.5 m. A resemblance of the total population case is observed if using 30 users at a time, for the flexible movement
148 approach, for instance, the percentage of mitigation of contagions reaches 65.5% for a rule of 2 m distancing, while the limited
149 movement policy presents 79.2 % of potential mitigation for the same distancing rule. Of note, using the limited movement
150 policy with rules of at least 1 m distance, the potential mitigation can reach almost 80%, a promising scheme compared to the
151 limitations of the flexible approach that presents up to 65% of potential mitigation.

152 For the case of 20 simultaneous users, while the flexible movement policy reaches maximum potential mitigation of 81.6%,
153 naturally with the 2 m rule, the mitigation using the limited movement approach reaches up to 87.5% for the same distancing
154 rule. In this direction, whenever up to 15 users are allowed to share the establishment, the mitigation of potential new contagions
155 benefits from both movement approaches and distancing rules, as may be expected. However, clearer differences can be found
156 when comparing movement policies. In the common approach which is represented by the flexible policy, the percentage of
157 mitigation reports at least 82% and reaches 87.5% for 2 m distancing, while the limited movement policy already reaches 88%
158 of potential mitigation for the 30 cm policy. The reason for this outcome is that the infectious agent may remain in closer
159 contact with a limited number of users when the movements are restricted, regardless of the distancing rule. Moreover, if
160 a limited movement approach is performed in combination with at least 1 m of distancing rule, the mitigation of potential
161 contagions reaches more than 90%, guiding potential schemes of viral spread mitigation.

162 Discussion

163 Considering the tested policies, it is clear that to mitigate the spread of the virus and therefore limiting potential new contagions,
164 commercial establishments can set distancing rules between users but also limit the number of users inside the establishment
165 at a time. We depict the case example of a supermarket testing different levels of distancing rules and the number of users,

Distancing rule	Number of users							
	15 users		20 users		30 users		50 users	
	Flexible (%)	Limited (%)	Flexible (%)	Limited (%)	Flexible (%)	Limited (%)	Flexible (%)	Limited (%)
30 cm	82.2	88.1	76.2	83.3	61.7	74.4	27.4	46.9
50 cm	82.3	88.1	77.1	84.0	62.1	75.3	26.2	49.0
1 m	86.0	90.8	79.5	86.8	64.2	79.1	27.9	46.6
1.5 m	85.7	91.3	79.9	86.3	65.1	79.0	29.7	53.0
2 m	87.5	91.8	81.6	87.5	65.5	79.2	31.2	55.4

Table 1. Percentage of mitigation of potential contagions. The percentages are presented according to the distancing rules and number of simultaneous users of the commercial establishment. A population size of 50 potential users is considered to evaluate how the number of simultaneous users, distancing rules, and movement policies impact the percentage of mitigation, which is the portion of users that remain susceptible after a simulation case. The percentages of mitigation are presented for the policies of flexible movement and limited movement.

besides, we explore two motion policies, the flexible and limited movement policies, whose results comparison are shown in Figure 5. Taking these results, we estimate the percentage of mitigation of potential new contagions for the flexible and limited movement schemes, accounting for the number of users and distancing rules. Results are reported in Table 1. Under this approach, if a percentage of mitigation of at least 85% is desired to reach, the flexible movement policy may be successful allowing the minimum number of users, 15 users, and a distancing rule of more than 1.5 m between users (86%). On the other hand, whenever the limited movement policy is used the number of users should be up to 20 and keep a distancing rule of at least 1 m (86.8%). Moreover, if more than 90% mitigation of potential viral spread is the target, then the limited movement policy with at least 1 m distance rule should be used. A target of more than 90% mitigation would not be overcome using the flexible movement approach. Of note, the percentage of mitigation scheme support not only the distancing rules and number of users schemes but also guided frameworks that allow users to access all areas of commercial establishments, in a well-organized manner, while significantly reduce the potential of SARS-CoV-2 contagion at any stage of the pandemic. The guided-limited movement policies may be also implemented in outbreak events of similar viruses, such as influenza A virus.

Hygiene measures, social distancing, gathering prevention and self-isolation are some of the most common recommendations that governments and authorities have indicated to combat the current pandemic, however, policies that add to viral spread mitigation in commercial establishments are still to be better implemented. A limitation of these kinds of policies may be the implementation itself, since they can represent extra work and pressure to the personnel establishments and, in some cases, extra personnel might be needed to control the access and keep only a certain number of users inside the place. However, a positive point is that schemes as the limited movement policy can be implemented at any point in the pandemic and can be a key part of the measures relaxation. For instance, reducing the number of users to the minimum during the critic period of the pandemic and gradually increase this number as conditions allow. These policies may also add to avoid premature relaxation of interventions, which may produce a second wave of infections¹⁸, a phenomenon that has been seen in influenza pandemics¹⁹. Finally, these schemes can be followed when still not a vaccine is available and during the first-in-human trials^{20,21}, but also be combined with vaccination strategies, once feasible.

189 The approaches herein developed, results and interpretations look to guide policy-makers, merchant authorities, public
190 commercial establishments chains, and the general society to be aware of potential measures that can assist in the mitigation of
191 the current SARS-CoV-2 pandemic, learn from them and, after implementation feedback, improve the schemes for the current
192 and future pandemic events.

193 **Acknowledgements**

194 We thank the support of the Alfons und Gertrud Kassel-Stiftung and the Deutsche Forschungsgemeinschaft through the project
195 HE7707/5-1.

196 **Author contributions statement**

197 G.H-M. and E.A.H-V. conceived the experiments, G.H-M. conducted the experiments, G.H-M. and E.A.H-V. analysed the
198 results. All authors reviewed the manuscript.

199 **References**

- 200 **1.** Kissler, S. M., Tedijanto, C., Lipsitch, M. & Grad, Y. Social distancing strategies for curbing the COVID-19 epidemic.
201 *medRxiv* (2020).
- 202 **2.** Wilder-Smith, A. & Freedman, D. Isolation, quarantine, social distancing and community containment: pivotal role for
203 old-style public health measures in the novel coronavirus (2019-ncov) outbreak. *J. travel medicine* **27**, taaa020 (2020).
- 204 **3.** Koo, J. R. *et al.* Interventions to mitigate early spread of SARS-CoV-2 in Singapore: a modelling study. *The Lancet Infect.*
205 *Dis.* (2020).
- 206 **4.** Flaxman, S. *et al.* Report 13: Estimating the number of infections and the impact of non-pharmaceutical interventions on
207 covid-19 in 11 european countries. (2020).
- 208 **5.** Anderson, R. M., Heesterbeek, H., Klinkenberg, D. & Hollingsworth, T. D. How will country-based mitigation measures
209 influence the course of the COVID-19 epidemic? *The Lancet* **395**, 931–934 (2020).
- 210 **6.** Matrajt, L. & Leung, T. Evaluating the effectiveness of social distancing interventions against COVID-19. *medRxiv* (2020).
- 211 **7.** Mahtani, K. R., Heneghan, C. & Aronson, J. K. What is the evidence for social distancing during global pandemics? a
212 rapid summary of current knowledge. (2020).
- 213 **8.** Fong, M. W. *et al.* Nonpharmaceutical measures for pandemic influenza in nonhealthcare settings—social distancing
214 measures. *Emerg Infect Dis* **26**, 26 (2020).
- 215 **9.** Lewnard, J. A. & Lo, N. C. Scientific and ethical basis for social-distancing interventions against COVID-19. *The Lancet.*
216 *Infect. diseases* (2020).

- 217 **10.** Tian, S. *et al.* Epidemiological investigation and intergenerational clinical characteristics of 24 COVID-19 patients
218 associated with supermarket cluster. *medRxiv* (2020).
- 219 **11.** Tracy, M., Cerdá, M. & Keyes, K. M. Agent-based modeling in public health: current applications and future directions.
220 *Annu. review public health* **39**, 77–94 (2018).
- 221 **12.** Mao, L. Agent-based simulation for weekend-extension strategies to mitigate influenza outbreaks. *BMC public health* **11**,
222 522 (2011).
- 223 **13.** Hernandez-Mejia, G. & Hernandez-Vargas, E. A. Uncovering antibody cross-reaction dynamics in influenza a infections.
224 *bioRxiv* (2020).
- 225 **14.** Peng, B. & Amos, C. I. Population simulations of COVID-19 outbreaks provide tools for risk assessment and continuity
226 planning. *medRxiv* (2020).
- 227 **15.** Imai, N. *et al.* Adoption and impact of non-pharmaceutical interventions for COVID-19. *Wellcome Open Res.* **5**, 59 (2020).
- 228 **16.** Lee, V. J. *et al.* Epidemic preparedness in urban settings: new challenges and opportunities. *The Lancet Infect. Dis.* (2020).
- 229 **17.** Yamane, S., Otori, K., Obata, A., Kobayashi, N. & Yugami, N. Agent-based social simulation for a checkout layout design
230 of a specific supermarket. In *Proceedings of 13th international workshop on multi-agent based simulation*, 153–64 (2012).
- 231 **18.** Xu, S. & Li, Y. Beware of the second wave of COVID-19. *The Lancet* **395**, 1321–1322 (2020).
- 232 **19.** Mummert, A., Weiss, H., Long, L.-P., Amigó, J. M. & Wan, X.-F. A perspective on multiple waves of influenza pandemics.
233 *PloS one* **8** (2013).
- 234 **20.** Amanat, F. & Krammer, F. SARS-CoV-2 vaccines: status report. *Immunity* (2020).
- 235 **21.** Zhu, F.-C., Li, Y.-H. & *et. all.* Safety, tolerability, and immunogenicity of a recombinant adenovirus type-5 vectored
236 COVID-19 vaccine: a dose-escalation, open-label, non-randomised, first-in-human trial. *The Lancet. Infect. diseases*
237 (2020).