

1 Plasma levels of soluble ACE2 are associated with sex, Metabolic Syndrome, and its  
2 biomarkers in a large cohort, pointing to a possible mechanism for increased severity in  
3 COVID-19  
4

5 Sergey A. Kornilov<sup>a\*</sup>, Isabelle Lucas<sup>a</sup>, Kathleen Jade<sup>a</sup>, Chengzhen L. Dai<sup>a</sup>, Jennifer C. Lovejoy<sup>a</sup>,  
6 & Andrew T. Magis<sup>a</sup>  
7

8 <sup>a</sup> Institute for Systems Biology, Seattle, WA  
9 401 Terry Ave N  
10 Seattle WA 98109-5263  
11

12 \*Corresponding author; [sergey.kornilov@isbscience.org](mailto:sergey.kornilov@isbscience.org)  
13

14 Abstract

15 We examined the associations between plasma concentrations of soluble ACE2 and biomarkers  
16 of Metabolic Syndrome in a large (N=2,051) sample of individuals who participated in a  
17 commercial wellness program and who underwent deep molecular phenotyping. sACE2 levels  
18 were significantly higher in men, compared to women, and in individuals with Metabolic  
19 Syndrome, compared to controls. sACE2 levels showed reliable associations with all individuals  
20 components of Metabolic Syndrome, including obesity, hypertension, insulin resistance,  
21 hyperlipidemia, and as well as markers of liver damage. This profile of associations was  
22 statistically significantly stronger in men, compared to women, and points to preexisting  
23 cardiometabolic conditions as possible risk factors for increased severity of symptoms in some  
24 COVID-19 patients through increased expression of ACE2 in the liver.  
25

26 Keywords: ACE2, SARS-CoV-2, COVID-19, Metabolic Syndrome, GGT, liver function

27

28 List of abbreviations

29 sACE2/mACE2 – soluble/membrane-bound angiotensin-converting enzyme-2

30 MetS – Metabolic Syndrome

31 GGT – gamma-glutamyl-transferase

32 BMI – Body Mass Index

33 HbA1c – glycohemoglobin A1c

34 HOMA-IR – homeostatic model assessment of insulin resistance

35 hs-CRP – high-sensitivity C-reactive protein

36

37 Patients who are at high risk for mortality from COVID-19, the disease caused by severe acute  
38 respiratory syndrome coronavirus 2 (SARS-CoV-2), are more likely to be older and male, and to  
39 have chronic diseases such as hypertension, diabetes, cardiovascular, and chronic lung  
40 disease [1,2]. Although the mechanisms behind these associations are poorly understood, this  
41 increased risk could be partly associated with increased expression of the cellular receptor of  
42 SARS-CoV-2, angiotensin-converting enzyme-2 (ACE2), which is found at elevated levels in  
43 older individuals, men, and in cardiovascular and inflammatory conditions [3,4]. ACE2 maintains  
44 homeostasis of the renin-angiotensin system and converts angiotensin II to angiotensin 1-7,  
45 which has vasodilatory and anti-inflammatory properties. It occurs in a membrane bound form  
46 (mACE2), highly expressed in heart, airways, kidney, and liver tissue, and in an enzymatically  
47 active soluble form (sACE2) that is generated in response to inflammatory signals and disease  
48 via mACE2 shedding into the blood where it normally is found at low levels in healthy  
49 individuals.

50

51 We interrogated the associations between plasma concentrations of sACE2 and biomarkers of  
52 Metabolic Syndrome (Body Mass Index, BMI; blood pressure; glycemic markers, and lipid

53 levels), adiposity (plasma leptin and serum adiponectin), inflammation (high-sensitivity C-  
54 reactive protein, hsCRP, white cell count, and interleukin-8) and liver damage (alanine  
55 aminotransferase, aspartate transaminase, and gamma-glutamyl-transferase, GGT) in data  
56 from a large cohort of participants in a commercial wellness program who had undergone  
57 comprehensive multi-omic profiling (N=2,051; 1,238 women and 813 men, aged 22 to 87 years,  
58 M=47.3, SD=11.71) (see [5] for details). Clinical laboratory tests were performed in CLIA-  
59 certified laboratories by Quest Diagnostics or LabCorp. Plasma sACE2 and leptin levels were  
60 measured via proximity extension immunoassaying using Olink® Cardiovascular II proteomics  
61 panel. Analyses were performed using transformed and scaled biomarker values in a robust  
62 linear regression framework while controlling for age, sex (except sex-specific analyses), eight  
63 genetic principal components, smoking, vendor, season, and use of diabetes, cholesterol-  
64 lowering, and ACE-inhibitor medications.

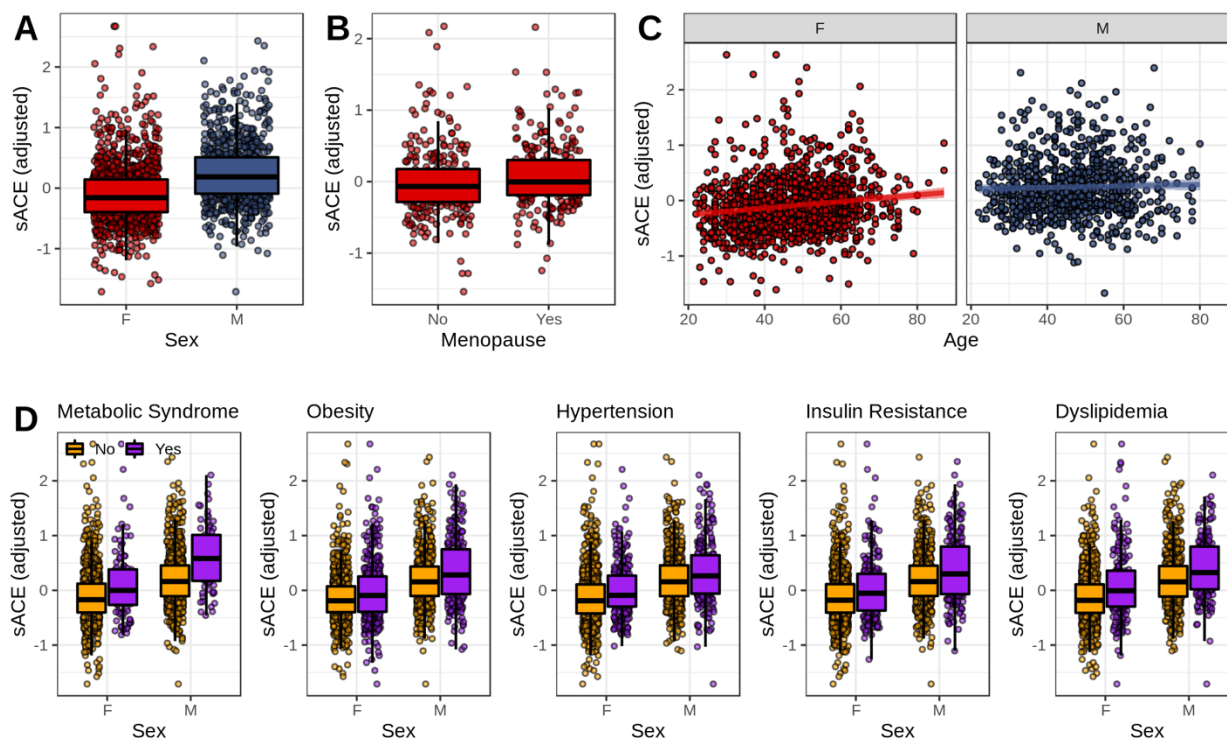
65  
66 Confirming results from recent studies [3,4], we found higher plasma sACE2 levels in men  
67 compared to women ( $P=2 \times 10^{-16}$ ), and in older individuals ( $P=8.6 \times 10^{-11}$ ), with the age association  
68 more pronounced in women (for the interaction,  $P_{\text{int}}=0.02$ ). We found higher levels of sACE2 in  
69 post-menopausal women, compared to pre-menopausal women ( $P=0.02$ ; see Figure 1).

70  
71 Individuals who met World Health Organization's (WHO) diagnostic criteria for MetS (N=171)  
72 displayed elevated plasma sACE2 levels compared to controls (N=1,880;  $P=4.7 \times 10^{-5}$ ), and the  
73 effect was stronger in men ( $P_{\text{int}}=8.9 \times 10^{-5}$ ). We found all of MetS component biomarkers to be  
74 positively associated with plasma sACE2 (see Figure 2). The associations were significantly  
75 stronger in men for biomarkers of obesity and adiposity (BMI,  $P_{\text{int}}=0.0123$ ; leptin,  $P_{\text{int}}=0.0342$ ),  
76 insulin resistance and hyperglycemia (HbA1c,  $P_{\text{int}}=0.0368$ ; HOMA-IR,  $P_{\text{int}}=0.042$ ), as well as  
77 triglycerides ( $P_{\text{int}}=0.0134$ ) and serum hsCRP ( $P_{\text{int}}=0.041$ ). Among examined biomarkers, we  
78 found the strongest association between sACE2 and GGT ( $P=3.44 \times 10^{-90}$ ), an enzyme that is an

79 important indicator of oxidative stress and liver and bile duct damage. The association between  
80 GGT and sACE2 was also preferentially stronger in men ( $P=0.01$ ).

81  
82 The observed robust pattern of associations between increased plasma sACE and MetS points  
83 to the possible shared pathways in cardiometabolic disease and COVID-19, implicating insulin  
84 resistance, chronic inflammation, and liver damage. This pattern is intriguing given that both  
85 sACE2 and mACE2 have been shown to be upregulated in a rat model of chronic liver disease  
86 [6] and that sACE2 levels are higher in patients with heart failure [4]. This upregulation may be  
87 related to the tissue-specific patterns of increased SARS-CoV-2 infectivity in patients with  
88 cardiovascular disease and/or liver damage, and warrants further research on sACE2 as a  
89 potential biomarker for COVID-19 severity.

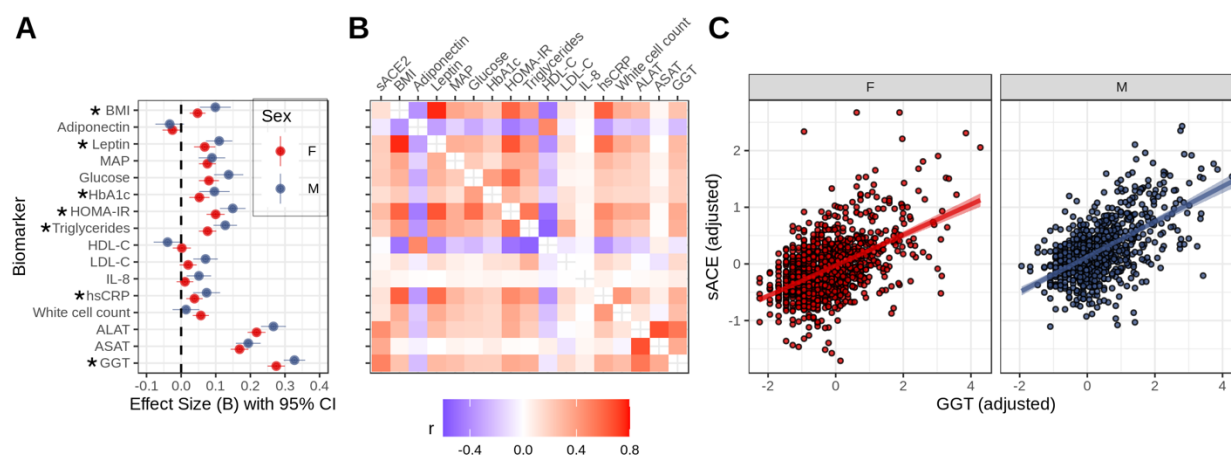
90



92

93 **Figure 1. The associations of plasma sACE2 levels with sex, age, and Metabolic**  
94 **Syndrome.** Panel A: sex differences in plasma sACE2 levels. Panel B: differences in sACE2

95 levels between pre- (N=272) and post-menopausal women (N=251) women over 35 years of  
96 age. Panel C: associations between sACE2 and age. Panel D: differences in sACE2 levels in  
97 individuals who do vs. do not meet diagnostic criteria for MetS and its subcomponents. The  
98 following diagnostic criteria, based on WHO guidelines, were used: Obesity: BMI>30 kg/m<sup>2</sup>,  
99 Hyperglycemia: fasting glucose >100 mg/dl or other evidence of insulin resistance (e.g.,  
100 prescription); Hypertension: systolic/diastolic blood pressure >=140/90 mm/hg; Dyslipidemia:  
101 triglycerides > 150 or HDL-C <35 for men and <39 for women. Overall status was determined  
102 as MetS if the individual met criteria for insulin resistance and satisfied at least one other  
103 domain criterion for the syndrome. sACE2: soluble ACE2 (adjusted for covariates and scaled).



104  
105 **Figure 2. Associations between sACE2 and biomarkers of Metabolic Syndrome,**  
106 **inflammation, and liver damage.** Panel A: effect size estimates from robust linear regressions  
107 predicting sACE2 from biomarkers estimated for men and women separately. Effect sizes are in  
108 NPX (log2 metric for the sACE2 measurement) per each standard deviation increase in  
109 transformed biomarker. Biomarkers for which a significant interaction with sex was established  
110 are marked with \*. Panel B: partial Spearman correlations between study biomarkers and  
111 sACE2 levels in the total sample. Panel C: scatterplot of associations between GGT and  
112 sACE2. BMI: Body Mass Index; MAP – Mean Arterial Blood Pressure, HbA1c –  
113 glycohemoglobin A1c, HOMA-IR – homeostatic model assessment of insulin resistance, HDL-C

114 - high-density lipoprotein cholesterol, LDL-C – low-density lipoprotein cholesterol. IL-8 -  
115 interleukin 8, hsCRP – high-sensitivity C-reactive protein, ALAT – alanine aminotransferase,  
116 ASAT – aspartate transaminase, GGT – gamma-glutamyl-transferase.

117

## 118 **Declarations**

### 119 **Ethics approval and consent to participate**

120 All research was conducted in accordance to regulations and guidelines for observational  
121 research in human subjects. The study was reviewed and approved by the Western IRB (Study  
122 Number 1178906). The research was performed entirely using de-identified and aggregated  
123 data of individuals who had signed a research authorization allowing the use of their  
124 anonymized data in research. Per current U.S. regulations for use of deidentified data, informed  
125 consent was not required.

### 126 **Consent for publication**

127 Not applicable.

### 128 **Availability of data and materials**

129 The dataset supporting the conclusions of this article is available from the authors upon request.

### 130 **Competing interests**

131 The authors were previously employed by Arivale, Inc, and held stock options in the company.  
132 Arivale is now closed.

### 133 **Funding**

134 **Authors' contributions**

135 SK, ILB, KJ, JL, CD, AM conceptualized the study and drafted the manuscript. SK, CD, AM  
136 performed data quality control and assurance, transformation, and data analysis. All authors  
137 critically revised the manuscript.

138 **Acknowledgements**

139 The express their gratitude to the members of the Arivale program for granting the permission to  
140 use their deidentified data for research, and to Mr. Brett Smith at Institute for Systems Biology  
141 for his contribution to the study.

142 **References**

- 143 1. Tian W, Jiang W, Yao J, et al. Predictors of mortality in hospitalized COVID-19 patients:  
144 A systematic review and meta-analysis. *J Med Virol.* 2020;10.1002/jmv.26050.
- 145 2. Guo W, LM, Dong Y, et al. Diabetes is a risk factor for the progression and prognosis of  
146 COVID-19. *Diabetes Metab Res Rev.* 2020: e3319.
- 147 3. Swärd P, Edsfeldt A, Reepalu A, Jehpsson L, Rosengren BE, Karlsson MK. Age and sex  
148 differences in soluble ACE2 may give insights for COVID-19. *Crit Care.* 2020;24(1):221.
- 149 4. Sama IE, Ravera A, Santema BT, et al. Circulating plasma concentrations of  
150 angiotensin-converting enzyme 2 in men and women with heart failure and effects of  
151 renin-angiotensin-aldosterone inhibitors. *Eur Heart J.* 2020;41(19):1810-1817.
- 152 5. Zubair N., Conomos M., Hood L., et al. Genetic Predisposition Impacts Clinical Changes  
153 in a Lifestyle Coaching Program. *Sci Rep* 9. 2019:6805.
- 154 6. Herath CB., Warner, FJ., et al. Upregulation of hepatic Upregulation of hepatic  
155 angiotensin-converting enzyme 2 (ACE2) and angiotensin-(1–7) levels in experimental  
156 biliary fibrosis. *Journ of Hepatol.* 2007;47(3):387-395