

1 **Child wasting and concurrent stunting in low- and middle-income countries**

2 Andrew Mertens,^{1*} Jade Benjamin-Chung,¹ John M Colford Jr,¹ Alan E Hubbard,¹ Mark J van der Laan,¹
3 Jeremy Coyle¹, Oleg Sofrygin,¹ Wilson Cai,¹ Wendy Jilek,¹ Sonali Dayal,¹ Anna Nguyen,¹ Nolan N
4 Pokpongkiat,¹ Stephanie Djajadi,¹ Anmol Seth,¹ Esther O Chung,¹ Ivana Malenica,¹ Nima Hejazi,¹ Haodong
5 Li,¹ Ryan Hafen,² Vishak Subramoney,³ Jonas Häggström,⁴ Thea Norman,⁵ Parul Christian,⁶ Kenneth H
6 Brown,⁷ Benjamin F. Arnold,^{1,8,9*} and members of the *ki* Child Growth Consortium[‡]

7
8 ¹ Division of Epidemiology & Biostatistics, University of California, Berkeley, 2121 Berkeley Way Rm 5302
9 Berkeley, CA 94720-7360

10 ² Hafen Consulting, LLC, West Richland WA, 99353

11 ³ Certara Canada, 2000 Peel St, Montreal, Quebec H3A 2W5, Canada

12 ⁴ MTEK Sciences 802-777 West Broadway, Vancouver, BC, V5Z 1J8, Canada

13 ⁵ Quantitative Sciences, Bill & Melinda Gates Foundation, 500 5th Ave N, Seattle, WA 98109

14 ⁶ Maternal, Newborn & Child Health Discovery & Tools, Bill & Melinda Gates Foundation, 500 5th Ave N,
15 Seattle, WA 98109

16 ⁷ Department of Nutrition, University of California, Davis, 3135 Meyer Hall, Davis, CA 95616-5270

17 ⁸ Francis I. Proctor Foundation, University of California, San Francisco, 95 Kirkham St, San Francisco, CA
18 94143

19 ⁹ Department of Ophthalmology, University of California, San Francisco, 10 Koret Way, San Francisco, CA
20 94143

21

22 * Corresponding authors:

23

24 Andrew Mertens, amertens@berkeley.edu, Division of Epidemiology & Biostatistics, University of
25 California, Berkeley, 2121 Berkeley Way Rm 5302 Berkeley, CA 94720-7360

26 Benjamin F. Arnold, ben.arnold@ucsf.edu, Francis I. Proctor Foundation, University of California, San
27 Francisco, 95 Kirkham St, San Francisco, CA 94143

28

29 **Abstract**

30 Acute malnutrition accounts for an immense disease burden and is implicated as a key, underlying cause
31 of child mortality in low resource settings. Child wasting, defined as weight-for-length more than 2
32 standard deviations below international standards, is a leading indicator to measure the Sustainable
33 Development Goal target to end malnutrition by 2030. Prevailing methods to measure wasting rely on
34 cross-sectional surveys that are unable to measure onset, recovery, and persistence — key features of
35 wasting epidemiology that could inform preventive interventions and disease burden estimates. Here,
36 we show through an analysis of 18 longitudinal cohorts that child wasting is a highly dynamic process of
37 incident onset and recovery, and that peak incidence is between birth and 3 months — far earlier than
38 peak prevalence at 12-15 months. By age 24 months the proportion of children who had ever
39 experienced a wasting episode (33%) was more than 5-fold higher than prevalence (6%), suggesting that
40 the wasting burden is likely far higher than cross-sectional surveys suggest. Seasonally driven changes in
41 population mean weight-for-length were large (>0.5 z in some cohorts) and were synchronous with
42 rainfall across diverse settings, creating potential for seasonally targeted interventions. Our results
43 motivate a new focus on extending preventive interventions for child wasting to pregnant and lactating
44 mothers, and for preventive and therapeutic interventions to include children below age 6 months in
45 addition to current targets of ages 6-59 months.

46 ‡ Members of the *ki* Child Growth Consortium

- 47 1. Tahmeed Ahmed, International Centre for Diarrhoeal Disease Research, Bangladesh
- 48 2. Asad Ali, Aga Khan University, Pakistan
- 49 3. France Begín, UNICEF, USA
- 50 4. Pascal Obong Bessong, HIV/AIDS & Global Health Research Programme, University of Venda,
51 South Africa
- 52 5. Robert E. Black, Johns Hopkins University, Bloomberg School of Public Health, USA
- 53 6. Ladaporn Bodhidatta, Armed Forces Research Institute of Medical Sciences, Thailand
- 54 7. William Checkley, Johns Hopkins University, School of Medicine, USA
- 55 8. Jean E. Crabtree, Leeds Institute for Medical Research, St. James's University Hospital, University
56 of Leeds, United Kingdom
- 57 9. Rina Das, International Centre for Diarrhoeal Disease Research, Bangladesh
- 58 10. Subhasish Das, International Centre for Diarrhoeal Disease Research, Bangladesh
- 59 11. Christopher P. Duggan, Center for Nutrition, Boston Children's Hospital, USA
- 60 12. Abu Syed Golam Faruque, International Centre for Diarrhoeal Disease Research, Bangladesh
- 61 13. Wafaie W. Fawzi, Department of Global Health and Population, Harvard TH Chan School of
62 Public Health, USA
- 63 14. José Quirino da Silva Filho, Federal University of Ceará, Brazil
- 64 15. Robert H. Gilman, Johns Hopkins University, Bloomberg School of Public Health, USA
- 65 16. Richard Guerrant, University of Virginia, USA
- 66 17. Rashidul Haque, International Centre for Diarrhoeal Disease Research, Bangladesh
- 67 18. Eric R. Houpt, University of Virginia, USA
- 68 19. Najeeha Talat Iqbal, Department of Pediatrics and Child Health, Aga Khan University, Pakistan
- 69 20. Jacob John, Christian Medical College, Vellore, Tamil Nadu, India
- 70 21. Sushil Matthew John, Professor, Low Cost Effective Care Unit, Christian Medical College, Vellore,
71 Tamil Nadu, India
- 72 22. Gagandeep Kang, Translational Health Science and Technology Institute, India
- 73 23. Margaret Kosek, University of Virginia, USA
- 74 24. Aldo Ângelo Moreira Lima, Federal University of Ceará, Brazil
- 75 25. Tjale Cloupas Mahopo, Department of Nutrition, School of Health Sciences, University of Venda,
76 South Africa
- 77 26. Dharma S. Manandhar, Mother and Infant Research Activities (MIRA), Nepal
- 78 27. Karim P. Manji, Department of Pediatrics and Child Health, Muhimbili University School of
79 Health and Allied Sciences, Tanzania
- 80 28. Estomih Mduma, Haydom Lutheran Hospital, Tanzania
- 81 29. Venkata Raghava Mohan, Professor, Community Medicine, Christian Medical College, Vellore,
82 Tamil Nadu, India
- 83 30. Sophie E. Moore, Department of Women and Children's Health, Kings College London, UK &
84 MRC Unit The Gambia at London School of Hygiene and Tropical Medicine, United Kingdom
- 85 31. Mzwakhe Emanuel Nyathi, Department of Animal Services, School of Agriculture, University of
86 Venda, South Africa

- 87 32. Maribel Paredes Olortegui, AB PRISMA, Peru
88 33. William A. Petri, University of Virginia, USA
89 34. Prasanna Samuel Premkumar, Christian Medical College, India
90 35. Andrew M. Prentice, MRC Unit The Gambia at London School of Hygiene and Tropical Medicine,
91 United Kingdom
92 36. Najeeb Rahman, Aga Khan University, Pakistan
93 37. Kamran Sadiq, Aga Khan University, Pakistan
94 38. Rajiv Sarkar, Christian Medical College, Vellore, Tamil Nadu, India
95 39. Naomi M. Saville, Institute for Global Health University of College London, United Kingdom
96 40. Bhim P. Shrestha, Health Research and Development Forum (HRDF), Kathmandu, Nepal
97 41. Sanjaya Kumar Shrestha, Walter Reed/AFRIMS Research Unit, University of Bergen Soares,
98 Federal University of Ceará, Brazil
99 42. Bakary Sonko, MRC Unit The Gambia at London School of Hygiene and Tropical Medicine, United
100 Kingdom
101 43. Erling Svensen, Haukeland University Hospital, Norway
102 44. Sana Syed, Department of Pediatrics, Division of Gastroenterology, Hepatology & Nutrition
103 University of Virginia School of Medicine, USA, and Aga Khan University, Pakistan
104 45. Fayaz Umrani, Aga Khan University, Pakistan
105 46. Honorine D. Ward, Tufts Medical Center, Tufts University School of Medicine, USA
106 47. Pablo Penataro Yori, University of Virginia, USA

107
108
109
110
111
112
113
114
115
116
117
118
119
120
121
122
123
124
125

126 Introduction

127 Undernutrition contributes to 45% of deaths in children under 5 years of age.^{1,2} Wasting, or
128 dangerously low weight for a given length, is a form of undernutrition that results from a loss of muscle
129 and fat tissue from acute malnutrition or infection.³⁻⁵ An estimated 52 million children worldwide (7.7%
130 of children under 5 years) are wasted, with over half living in South Asia; and prevalence has not
131 decreased in 30 years.^{1,6} Wasting in early childhood, defined as a weight-for-length Z-score (WLZ) < -2,
132 is a serious condition, as children with less tissue mass have weakened immune systems and are
133 vulnerable to disease, leading to an increased mortality risk, especially if the wasting is severe (WLZ < -
134 3).^{2-4,7,8} Severe wasting can be successfully treated using nutrition rehabilitation with ready-to-use-
135 therapeutic foods and appropriate antimicrobial agents,^{9,10} but relapse and mortality continue to be
136 high. Also, randomized trials have shown inconsistent and small effects of nutritional interventions in
137 preventing moderate wasting.¹¹ Although reducing mortality from wasting through treatment is
138 impactful and cost effective,^{9,12} prevention is important as children who recover from wasting have a
139 higher risk of poor long-term growth and neurocognitive development.^{2,13,14} Wasting may also be a risk
140 factor for stunting.^{8,15,16} Research and programs often consider wasting and stunting separately, but
141 similar risk factors underlie each condition,^{17,18,19} wasting may reduce linear growth,²⁰ and concurrent
142 wasting and stunting heightens mortality risk far beyond the mortality risk of either condition in
143 isolation.^{3,7,8,21} The failure to implement large scale programs to prevent wasting may reflect a historic
144 focus of programs and research on the treatment of severe wasting rather than prevention, or an
145 incomplete understanding of the optimal time to intervene.

146 Wasting is thought to occur primarily during the critical period for adequate, appropriate and
147 safe complementary feeding from ages 6-24 months.^{22,23} Episodes of illness including diarrhea and
148 pneumonia may be followed by wasting or periods of food insecurity could cause more wasting,
149 although a better understanding of the pathways to wasting and therefore the optimal ages/times at
150 which to intervene is needed.²⁴ A more complete understanding of the epidemiology of wasting and
151 how it varies by age is key to develop and target preventive interventions.^{11,25,26-28}

152 Unlike the cumulative process of linear growth failure leading to stunting,²⁹ wasting varies
153 considerably over time both within-individuals and within-populations.^{16,30} This dynamic nature means
154 that the number of wasting episodes within a year is poorly captured in cross-sectional, survey-based
155 estimates of wasting: as many as 13 times the number of children who are wasted at one point in time
156 (prevalence) may experience a period of being wasted within a year (incidence).³¹ Wasting varies within
157 populations in relation to seasonal changes in food insecurity or disease,^{25,32-34} but not consistently
158 between countries; the wasting peaks were not always in the hungry season²⁴ and there may be an
159 interaction between season and child age.³⁵ The highly seasonal nature of wasting means surveys of
160 prevalence taken at different times have limited comparability. Longitudinal analyses could provide new,
161 crucial information about the optimal timing of intervention delivery to prevent seasonal peaks.²⁴
162 Overall, there is limited research about incident episodes of wasting.^{1,2} Anthropometry measurements
163 from 18 longitudinal cohorts in low- and middle-income countries (LMICs) provided a unique
164 opportunity to examine the life-course of early childhood wasting across diverse populations.

165 Pooled longitudinal analyses

167 Here, we report a pooled analysis of 18 longitudinal cohorts from 10 LMICs in South Asia, Sub-
168 Saharan Africa, and Latin America, that measured length and weight monthly among children 0-24
169 months of age. Our primary objectives were to produce the first large-scale estimates of wasting
170 incidence and recovery and to quantify the temporal and regional variation. We also assessed the
171 concurrence of wasting and stunting and compared estimates of wasting prevalence and incidence. We

172 hypothesized that a careful examination of wasting incidence and recovery would provide new insights
173 into the timing and burden of wasting and that incidence-based summaries of wasting could differ from
174 summaries based on prevalence.

175 To test these hypotheses, we analyzed data from the Bill & Melinda Gates Foundation's Knowledge
176 Integration (*ki*) database, which includes observations on millions of participants from varied studies on
177 child growth and development.³⁶ We selected longitudinal cohorts for analysis that met 5 criteria: 1)
178 conducted in low- or middle-income countries; 2) enrolled children between birth and age 24 months
179 and measured their length and weight repeatedly over time; 3) did not restrict enrollment to acutely ill
180 children; 4) enrolled at least 200 children; 5) collected anthropometry measurements at least monthly
181 (Extended Data Fig 1).

182 Inclusion criteria were defined to select cohorts representative of general populations in low- and
183 middle-income countries (LMICs) with sufficiently frequent measurements to investigate the acute,
184 dynamic nature of wasting. Eighteen cohorts met the inclusion criteria, encompassing 10,854 children
185 and 187,215 total anthropometry measurements from birth to age 24 months (Fig 1).

186 We calculated weight-for-length Z-scores (WLZ) using WHO 2006 growth standards.³⁷ We dropped
187 381 unrealistic measurements (0.2%) of WLZ (> 5 or < -5 Z-score), following the WHO
188 recommendations.³⁸ Cohorts ranged in size from 215 children in the CONTENT cohort³⁹ to 2,920 children
189 from the MRC Keneba cohort⁴⁰ (Fig 1). Unless otherwise indicated, we calculated estimates within
190 cohorts and then pooled estimates across cohorts using random effects models fit with restricted
191 maximum likelihood estimation, which is more conservative than fixed-effects models when cohort-
192 specific estimates are heterogeneous.^{41,42} Cohorts were distributed throughout South Asia, Africa, and
193 Latin America, but did not cover entire regions (Extended Data Fig 2). We assessed *ki* cohort
194 representativeness by comparing Z-score measurements to population-based samples measured in
195 Demographic and Health Surveys (DHS). We found that in Latin America, both weight and length were
196 higher in *ki* cohorts than in population-based DHS samples, but WLZ distributions were similar (Extended
197 Data Fig 3). WAZ distributions were nearly identical between the Asian and African *ki* cohorts and
198 population-based DHS samples, but the mean LAZ was lower in *ki* cohorts than in their target
199 populations, and thus mean WLZ was higher (Extended Data Fig 3). LAZ decreased from birth to 6
200 months in *ki* cohorts but held steady over this age range in the DHS data, so the *ki* cohort estimates of
201 early WLZ recovery may be higher than estimates from population-based samples.

202

203 **Regional differences in wasting**

204 Across all observations, mean WLZ was near zero at birth and then increased over the first 6 months
205 before decreasing until 12 months (Fig 2a). Region-specific patterns in Latin America and South Asia
206 reflected the overall pattern, although children in South Asian cohorts had much lower WLZ throughout
207 the age range. Mean WLZ among children from African cohorts was similar to children from Latin
208 American cohorts at birth but then steadily decreased until 12 months (Fig 2a).

209 Children were wasted for 15,543 (8.7%) measurements, and severely wasted for 3,290 (1.8%)
210 measurements. The highest wasting prevalence was at birth, which may result from intrauterine growth
211 restriction or preterm birth, with a random-effects pooled prevalence of 11.9% (95% CI: 7.0, 19.5), in
212 contrast to prior research findings that show peaks in wasting prevalence occurring in children between
213 6-24 months old (Fig 2b).^{35,43-45} Across all three regions, there was a consistent pattern in prevalence
214 decreasing from birth to three months and then increasing until children were 12 months old, but in
215 South Asia and Latin America wasting prevalence was higher at birth than at 12 months. Severe wasting
216 followed a similar pattern but was much rarer (Extended data fig 4). Wasting onset was highest during
217 the first 3 months (Fig 2c). Overall, almost half (47.8%) of children who ever experienced wasting in the

218 first two years of life experienced the first onset of wasting in their first 3 months, and an estimated
219 14.8% (95% CI: 9.1, 23.0) of all children experienced wasting by age 3 months. Prevalence measures of
220 wasting masked how common it was for children to experience wasting in their first 24 months. After
221 birth, a maximum of 7.0% (95% CI: 4.4, 11.0) of children were wasted any specific age, but 33.3% (95%
222 CI: 21.1, 48.3) of children experienced at least one wasting episode by age 24 months, and in South
223 Asian cohorts the proportion was 50.5% (95% CI:41.6, 59.3, Fig 2b, c).

224 Cohorts from South Asia, where low birthweight is common,⁴⁶ wasting prevalence at birth was
225 18.9% (95% CI: 15.0, 23.7), suggesting that poor maternal nutrition or maternal illness are key regional
226 drivers of wasting.⁴⁷ There may be regional differences in wasting etiology, as prior research has found
227 that severely wasted children respond slower to treatment in India than in Africa, potentially due to the
228 younger ages of wasted children, more severe wasting episodes, or the use of WLZ to identify severe
229 wasting.^{17,48-51} WLZ cutoffs may capture different severities of growth failure across different
230 populations due to population differences in body composition; children with thinner abdomens will
231 have lower WLZ scores even with identical body fat and muscle composition as children with a thicker
232 abdomens.^{52,53}

233

234 **Seasonality of wasting**

235 We joined monthly rainfall totals to cohorts by location and year, and for each cohort we
236 estimated a seasonality index based on rainfall (details in Methods).^{54,55} We estimated monthly average
237 WLZ and examined seasonal changes with respect to rainfall, under the hypothesis that seasonal
238 changes in food availability tied to rainfall and harvests could cause seasonal wasting. Mean WLZ varied
239 dramatically by calendar date in almost all cohorts, with a consistent minimum mean WLZ coinciding
240 with peak rainfall (Fig 3a). Mean WLZ was -0.23 (95% CI: -0.31, -0.15) lower during the three months
241 period of peak rainfall, compared to the mean WLZ in the opposite three-month period of the year,
242 when pooled across cohorts (Fig. 3b). Average seasonal decline in WLZ was -0.26 (95% CI: -0.34, -0.19) in
243 cohorts with a seasonality index > 0.8, but some cohorts evidenced seasonal WLZ declines of more than
244 0.5 Z. (Fig. 3b).

245 South Asian cohorts had temporally synchronous rainfall, so we estimated WLZ at birth by
246 calendar month, pooled across the 10 South Asian cohorts. Mean WLZ at birth varied by almost a full
247 standard deviation depending on the month the child was born (range: -0.5 Z to -1.3 Z; Fig 3c), which
248 suggests that seasonally-influenced maternal nutrition, likely mediated through intrauterine growth
249 restriction or preterm birth,⁵⁶ was a major determinant of child WLZ at birth. Birth month also
250 influenced the effect of season on WLZ trajectories that persisted through a child's second year of life
251 (Extended Data Fig 5).

252

253 **Wasting incidence and recovery**

254 There was high variability in wasting status across longitudinal measurements and frequent
255 fluctuations of many children's WLZ measurements around the -2 Z threshold. We thus defined unique
256 wasting episodes by imposing a 60-day recovery period when a child's WLZ measurements needed to
257 remain above -2 to be considered recovered and at risk for a future episode (Fig 4a). Children who were
258 born wasted were considered to have an incident episode of wasting at birth. Incidence at all ages was
259 higher in South Asia, with highest incidence in the first 3 months, even when excluding episodes of
260 wasting at birth (Fig 4b).

261 Ultimately, most children recovered from moderate or severe wasting episodes, reinforcing its
262 status as an acute condition. Children met our definition of "recovered" in 91.5% of episodes of
263 moderate and 82.5% of episodes of severe wasting. Pooling across cohorts, children recovered from

264 39.2% (95% CI: 33.9, 44.7) of wasting episodes within 30 days, 64.6% (95% CI: 58.8, 70.0) within 60
265 days, and 71.0% (95% CI: 65.5, 76.0) within 90 days. Median episode length was 42 (95% CI: 39, 44) days.
266 We examined the distribution of WLZ in the three-month period after a child was considered recovered
267 from wasting, stratified by the age at which the episode occurred. We found that children recovered to
268 a higher WLZ from at-birth wasting or wasting episodes in the 0-6 month age window compared with
269 episodes that occurred at older ages (Fig 4c). Consistent with larger WLZ increases during recovery from
270 wasting at younger ages, a larger proportion of children recovered within 30, 60, and 90 days if the
271 wasting episode occurred before age 6 months (Fig 4d). South Asian cohorts had lower rates of recovery
272 in the 6-18 month age period compared with other regions (Fig 4d). On average, however, the WLZ of
273 children born wasted did not catch up to the WLZ of children not born wasted, and children who were
274 born wasted but recovered had a higher cumulative incidence of wasting after 6 months of age (37.1%
275 cumulative incidence in children born wasted [95% CI: 28.3, 47.0] vs. 24.3% cumulative incidence in
276 children not born wasted [95% CI: 17.6, 32.5], Fig 4e-f).

277

278 **Persistent and concurrent growth failure**

279 The longitudinal cohorts enabled us to identify a subset of children who experienced persistent
280 wasting during their first 24 months. We used a pragmatic definition¹⁵ that classified children as
281 persistently wasted if $\geq 50\%$ of their WLZ measurements from birth to 24 months fell below -2 , which
282 could result from many short wasting episodes or a few longer episodes. Among 9,788 children with at
283 least four measurements, 3.7% (95% CI: 2.2, 6.1) were persistently wasted. Persistent wasting was
284 highest in South Asia, with 6.9% (95% CI: 4.7, 10.2) persistently wasted over the first 24 months of life
285 (Extended Data Fig 4). Among children wasted at birth, 11.4% of children were persistently wasted after
286 6 months (95% CI: 9.2, 14.0) while 6.5% of children not enrolled wasted were persistently wasted after 6
287 months (95% CI: 4.4, 9.4). A companion article reports key determinants of persistent wasting and its
288 consequences for mortality.⁵⁷

289 Wasted children who are simultaneously stunted (length-for-age $Z < -2$) are at substantially
290 higher risk of mortality than all other growth phenotypes.⁷ We characterized the epidemiology of
291 concurrent wasting and stunting across cohorts and by region to understand when concurrent wasting
292 and stunting first manifests and when it is most common among children under 24 months. Overall,
293 1,508 children (14%) were both wasted and stunted during at least one measurement, and 233 (2%)
294 were both severely wasted and severely stunted during at least one measurement. Children who were
295 ever wasted in the first 6 months were 1.8 (95% CI: 1.5, 2.3) times more likely to be both wasted and
296 stunted between ages 18-24 months. Concurrent wasting and stunting was most common in South Asia,
297 with peak prevalence at ages 12-18 months (Fig 5a), driven primarily by increases in stunting prevalence
298 as children aged.²⁹ Among anthropometry measurements of wasted children, a large proportion were
299 also classified as underweight (37.9%) or stunted and underweight (39.9%); the highest proportion of
300 only-wasted children occurred at birth (6.2% of all children, Fig 5b). A companion article reports the
301 relationship between WLZ and risk of subsequent linear growth failure.⁵⁷

302

303 **Discussion**

304 There were several limitations to this analysis. Z-score distributions in the cohorts were broadly
305 similar to measurements from nationally representative surveys, but South Asian cohorts had lower LAZ
306 (Extended data Fig 3), which could have led to higher rates of wasting recovery in early life compared
307 with the general population. Children were not measured at the same ages across all cohorts, and not
308 every child was measured from birth to age 24 months, so the population underlying each age-specific
309 estimate varied. We assumed recovery from moderate wasting was spontaneous because we did not

310 have consistent data across cohorts on child treatment referral; wasting recovery may thus be higher in
311 these highly monitored cohorts than in the general population due to treatment referrals. We used
312 weight-for-length Z-score to define wasting, as it was measured in all cohorts, but mid-upper arm
313 circumference (MUAC) as an alternative wasting measure has been found in some settings to be a better
314 predictor of subsequent mortality.^{58–60} Case fatality rates for severe wasting are high so if incident
315 wasting and mortality occurred between monthly visits we could have under-estimated incidence rates,
316 and prevalence estimates could be lower from survivorship bias.^{61,62} Additionally, the WHO Child
317 Growth Standards overestimate wasting at birth among children born preterm, but we did not adjust Z-
318 scores for gestational age in the primary analyses because only five included cohorts measured
319 gestational age via either recall of last menstrual period or newborn examination.⁶³ Adjustment for
320 gestational age among cohorts that measured it reduced at-birth stunting prevalence by one percent
321 and at-birth underweight prevalence by two percent (Extended data Fig 6). Even if preterm birth
322 accounts for some of at-birth wasting, the small birth size — by any cause — documented in this analysis
323 raises concern because of its consequences for child growth failure and mortality during the first 24
324 months.⁵⁷

325 Our results provide new insights into the dynamic process of child wasting with important
326 implications for preventive interventions. WLZ varied dramatically by season in most cohorts, and in
327 South Asia at-birth WLZ varied by 0.7 z-scores (95% CI: 0.4, 1.0) depending on birth month with
328 consequences that persisted throughout the first 24 months (Fig 3, Extended Data Figure 5). These
329 results provide strong support for the development of seasonally targeted interventions to prevent
330 wasting in food-insecure populations. The longitudinal analyses show that the wasting burden is likely
331 far larger than can be quantified with prevailing methods based on cross-sectional, prevalence surveys.
332 By age 24 months, 50% of children in South Asian cohorts experienced at least one wasting episode and
333 7% were persistently wasted — new insights only possible from the longitudinal data analyses. Crucially,
334 we found that onset of wasting was highest from birth to age 3 months, and among children who
335 experience any wasting during their first 24 months, 48% experience their first wasting episode during
336 this early period. Wasting treatment programs have traditionally focused on children from 6–59 months.
337 Our results should motivate preventive and therapeutic programs to consider extending efforts to
338 mothers during pregnancy and early lactation, and to children during the first months of life. If
339 preventive or therapeutic interventions focus on ages earlier than 6 months, then they must integrate
340 carefully with current recommendations for exclusive breastfeeding.

341

342

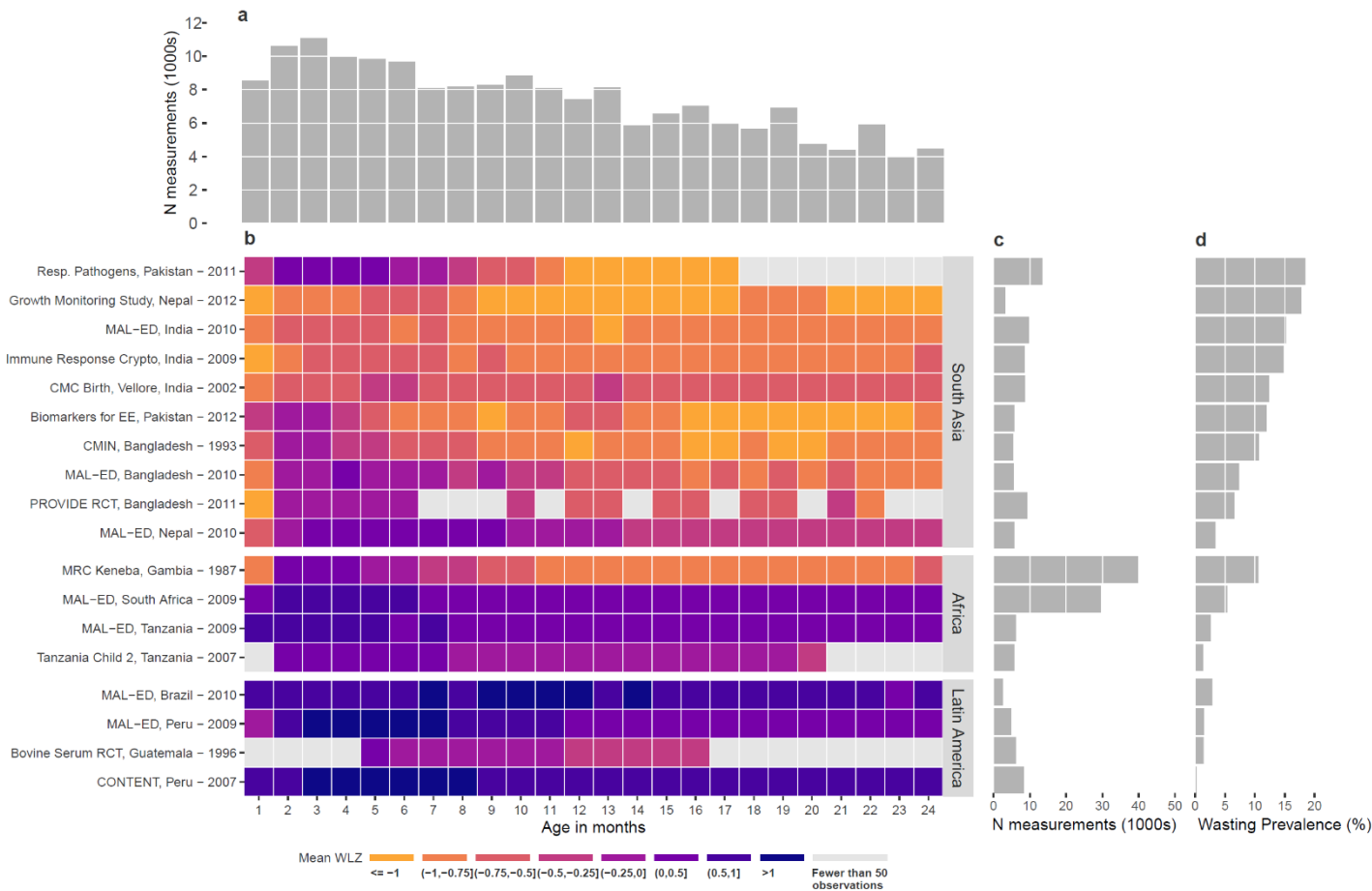
343 References

- 344 1. WHO Multicentre Growth Reference Study Group. WHO Child Growth Standards: Length/height-for-age,
345 weight-for-age, weight-for-length, weight-for-height and body mass index-for-age: Methods and
346 development. Geneva: World Health Organization, 2006 (312 pages).
- 347 2. Black, R. E. *et al.* Maternal and child undernutrition and overweight in low-income and middle-income
348 countries. *Lancet* **382**, 427–451 (2013).
- 349 3. Briend, A., Khara, T. & Dolan, C. Wasting and stunting—similarities and differences: policy and programmatic
350 implications. *Food Nutr. Bull.* **36**, S15–23 (2015).
- 351 4. Chang, C. Y. *et al.* Children successfully treated for moderate acute malnutrition remain at risk for malnutrition
352 and death in the subsequent year after recovery. *J. Nutr.* **143**, 215–220 (2013).
- 353 5. Malnutrition and Infection: Complex Mechanisms and Global Impacts.
354 <https://journals.plos.org/plosmedicine/article?id=10.1371/journal.pmed.0040115>.
- 355 6. Briend, A. & Prinzo, Z. W. Dietary management of moderate malnutrition: time for a change. *Food Nutr. Bull.*
356 **30**, S265–266 (2009).

- 357 7. McDonald, C. M. *et al.* The effect of multiple anthropometric deficits on child mortality: meta-analysis of
358 individual data in 10 prospective studies from developing countries. *Am. J. Clin. Nutr.* **97**, 896–901 (2013).
- 359 8. Myatt, M. *et al.* Children who are both wasted and stunted are also underweight and have a high risk of
360 death: a descriptive epidemiology of multiple anthropometric deficits using data from 51 countries. *Arch.*
361 *Public Health* **76**, (2018).
- 362 9. Bhutta, Z. A. *et al.* Evidence-based interventions for improvement of maternal and child nutrition: what can be
363 done and at what cost? *The Lancet* **382**, 452–477 (2013).
- 364 10. World Health Organization & Nutrition for Health and Development. *Guideline.* (2013).
- 365 11. Bhutta, Z. A. *et al.* What works? Interventions for maternal and child undernutrition and survival. *Lancet* **371**,
366 417–440 (2008).
- 367 12. Horton, R. Maternal and child undernutrition: an urgent opportunity. *The Lancet* **371**, 179 (2008).
- 368 13. Grantham-McGregor, S. *et al.* Developmental potential in the first 5 years for children in developing countries.
369 *The Lancet* **369**, 60–70 (2007).
- 370 14. Martins, V. J. B. *et al.* Long-Lasting Effects of Undernutrition. *Int. J. Environ. Res. Public. Health* **8**, 1817–1846
371 (2011).
- 372 15. Richard, S. A. *et al.* Wasting Is Associated with Stunting in Early Childhood¹²³. *J. Nutr.* **142**, 1291–1296 (2012).
- 373 16. Stobaugh, H. C. *et al.* Children with Poor Linear Growth Are at Risk for Repeated Relapse to Wasting after
374 Recovery from Moderate Acute Malnutrition. *J. Nutr.* **148**, 974–979 (2018).
- 375 17. Martorell, R. & Young, M. F. Patterns of Stunting and Wasting: Potential Explanatory Factors. *Adv. Nutr.* **3**,
376 227–233 (2012).
- 377 18. Saaka, M. & Galaa, S. Z. Relationships between Wasting and Stunting and Their Concurrent Occurrence in
378 Ghanaian Preschool Children. *J. Nutr. Metab.* **2016**, (2016).
- 379 19. Hoffman, D., Cacciola, T., Barrios, P. & Simon, J. Temporal changes and determinants of childhood nutritional
380 status in Kenya and Zambia. *J. Health Popul. Nutr.* **36**, 27 (2017).
- 381 20. Isanaka, S., Hitchings, M. D. T., Berthé, F., Briend, A. & Grais, R. F. Linear growth faltering and the role of
382 weight attainment: Prospective analysis of young children recovering from severe wasting in Niger. *Matern.*
383 *Child. Nutr.* **0**, e12817.
- 384 21. C, A., T, K., C, D., Ja, B. & Group, W. T. I. Research priorities on the relationship between wasting and stunting.
385 *Field Exch.* **53** 28 (2016).
- 386 22. Lenters, L., Wazny, K. & Bhutta, Z. A. Management of Severe and Moderate Acute Malnutrition in Children. in
387 *Reproductive, Maternal, Newborn, and Child Health: Disease Control Priorities, Third Edition (Volume 2)* (eds.
388 Black, R. E., Laxminarayan, R., Temmerman, M. & Walker, N.) (The International Bank for Reconstruction and
389 Development / The World Bank, 2016).
- 390 23. Das, J. K., Salam, R. A., Imdad, A. & Bhutta, Z. A. Infant and Young Child Growth. in *Reproductive, Maternal,*
391 *Newborn, and Child Health: Disease Control Priorities, Third Edition (Volume 2)* (eds. Black, R. E.,
392 Laxminarayan, R., Temmerman, M. & Walker, N.) (The International Bank for Reconstruction and
393 Development / The World Bank, 2016).
- 394 24. Young, H. & Marshak, A. A discussion paper on the scope of the problem, its drivers, and strategies for moving
395 forward for policy, practice, and research. 55.
- 396 25. Nabwera, H. M., Fulford, A. J., Moore, S. E. & Prentice, A. M. Growth faltering in rural Gambian children after
397 four decades of interventions: a retrospective cohort study. *Lancet Glob. Health* **5**, e208–e216 (2017).
- 398 26. Lenters, L. M., Wazny, K., Webb, P., Ahmed, T. & Bhutta, Z. A. Treatment of severe and moderate acute
399 malnutrition in low- and middle-income settings: a systematic review, meta-analysis and Delphi process. *BMC*
400 *Public Health* **13**, S23 (2013).
- 401 27. Luby, S. P. *et al.* Effects of water quality, sanitation, handwashing, and nutritional interventions on diarrhoea
402 and child growth in rural Bangladesh: a cluster randomised controlled trial. *Lancet Glob. Health* **6**, e302–e315
403 (2018).

- 404 28. Null, C. *et al.* Effects of water quality, sanitation, handwashing, and nutritional interventions on diarrhoea and
405 child growth in rural Kenya: a cluster-randomised controlled trial. *Lancet Glob. Health* **6**, e316–e329 (2018).
- 406 29. Benjamin-Chung, J. *et al.* (submitted). Early childhood linear growth failure in low-and middle-income
407 countries. (2020).
- 408 30. Osgood-Zimmerman, A. *et al.* Mapping child growth failure in Africa between 2000 and 2015. *Nature* **555**, 41–
409 47 (2018).
- 410 31. Bulti, A. *et al.* Improving estimates of the burden of severe acute malnutrition and predictions of caseload for
411 programs treating severe acute malnutrition: experiences from Nigeria. *Arch. Public Health* **75**, (2017).
- 412 32. Brown, K. H., Black, R. E. & Becker, S. Seasonal changes in nutritional status and the prevalence of
413 malnutrition in a longitudinal study of young children in rural Bangladesh. *Am. J. Clin. Nutr.* **36**, 303–313
414 (1982).
- 415 33. Egata, G., Berhane, Y. & Worku, A. Seasonal variation in the prevalence of acute undernutrition among
416 children under five years of age in east rural Ethiopia: a longitudinal study. *BMC Public Health* **13**, (2013).
- 417 34. Kinyoki, D. K. *et al.* Space-time mapping of wasting among children under the age of five years in Somalia from
418 2007 to 2010. *Spat. Spatio-Temporal Epidemiol.* **16**, 77–87 (2016).
- 419 35. Schoenbuchner, S. M. *et al.* The relationship between wasting and stunting: a retrospective cohort analysis of
420 longitudinal data in Gambian children from 1976 to 2016. *Am. J. Clin. Nutr.* doi:10.1093/ajcn/nqy326.
- 421 36. Peppard, T. *et al.* (submitted). Combined longitudinal growth cohorts from infants born in South Asia, Sub-
422 Saharan Africa and Latin America. (2020).
- 423 37. WHO Multicentre Growth Reference Study Group. WHO child growth standards: length/height-for-age,
424 weight-for-age, weight-for-length, weight-for-height and body mass index-for-age: Methods and
425 development. *Geneva World Health Organ.* 312 pages (2006).
- 426 38. Organization, W. H. & Fund (UNICEF), U. N. C. *Recommendations for data collection, analysis and reporting on*
427 *anthropometric indicators in children under 5 years old.* (World Health Organization, 2019).
- 428 39. Jaganath, D. *et al.* First Detected *Helicobacter pylori* Infection in Infancy Modifies the Association Between
429 Diarrheal Disease and Childhood Growth in Peru. *Helicobacter* **19**, 272–279 (2014).
- 430 40. Hennig, B. J. *et al.* Cohort Profile: The Kiang West Longitudinal Population Study (KWLPS)—a platform for
431 integrated research and health care provision in rural Gambia. *Int. J. Epidemiol.* **46**, e13 (2017).
- 432 41. Viechtbauer, W. Bias and Efficiency of Meta-Analytic Variance Estimators in the Random-Effects Model. *J.*
433 *Educ. Behav. Stat.* **30**, 261–293 (2005).
- 434 42. Raudenbush, S. W. Analyzing Effect Sizes: Random-Effects Models. in *The Handbook of Research Synthesis and*
435 *Meta-Analysis* 295–315 (Russell Sage Foundation, 2009).
- 436 43. de Onis, M. *et al.* Comparison of the World Health Organization (WHO) Child Growth Standards and the
437 National Center for Health Statistics/WHO international growth reference: implications for child health
438 programmes. *Public Health Nutr.* **9**, 942–947 (2006).
- 439 44. Garenne, M., Myatt, M., Khara, T., Dolan, C. & Briend, A. Concurrent wasting and stunting among under-five
440 children in Niakhar, Senegal. *Matern. Child. Nutr.* **15**, (2019).
- 441 45. Payandeh, A., Saki, A., Safarian, M., Tabesh, H. & Siadat, Z. Prevalence of Malnutrition among Preschool
442 Children in Northeast of Iran, A Result of a Population Based Study. *Glob. J. Health Sci.* **5**, 208–212 (2013).
- 443 46. Blencowe, H. *et al.* National, regional, and worldwide estimates of low birthweight in 2015, with trends from
444 2000: a systematic analysis. *Lancet Glob. Health* **0**, (2019).
- 445 47. Ashorn, P. *et al.* Co-causation of reduced newborn size by maternal undernutrition, infections, and
446 inflammation. *Matern. Child. Nutr.* **14**, e12585 (2018).
- 447 48. Victora, C. G., Onis, M. de, Hallal, P. C., Blössner, M. & Shrimpton, R. Worldwide Timing of Growth Faltering:
448 Revisiting Implications for Interventions. *Pediatrics* **125**, e473–e480 (2010).
- 449 49. Hemalatha, R., Radhakrishna, K. & Kumar, Bn. Undernutrition in children & critical windows of opportunity in
450 Indian context. *Indian J. Med. Res.* **148**, 612 (2018).

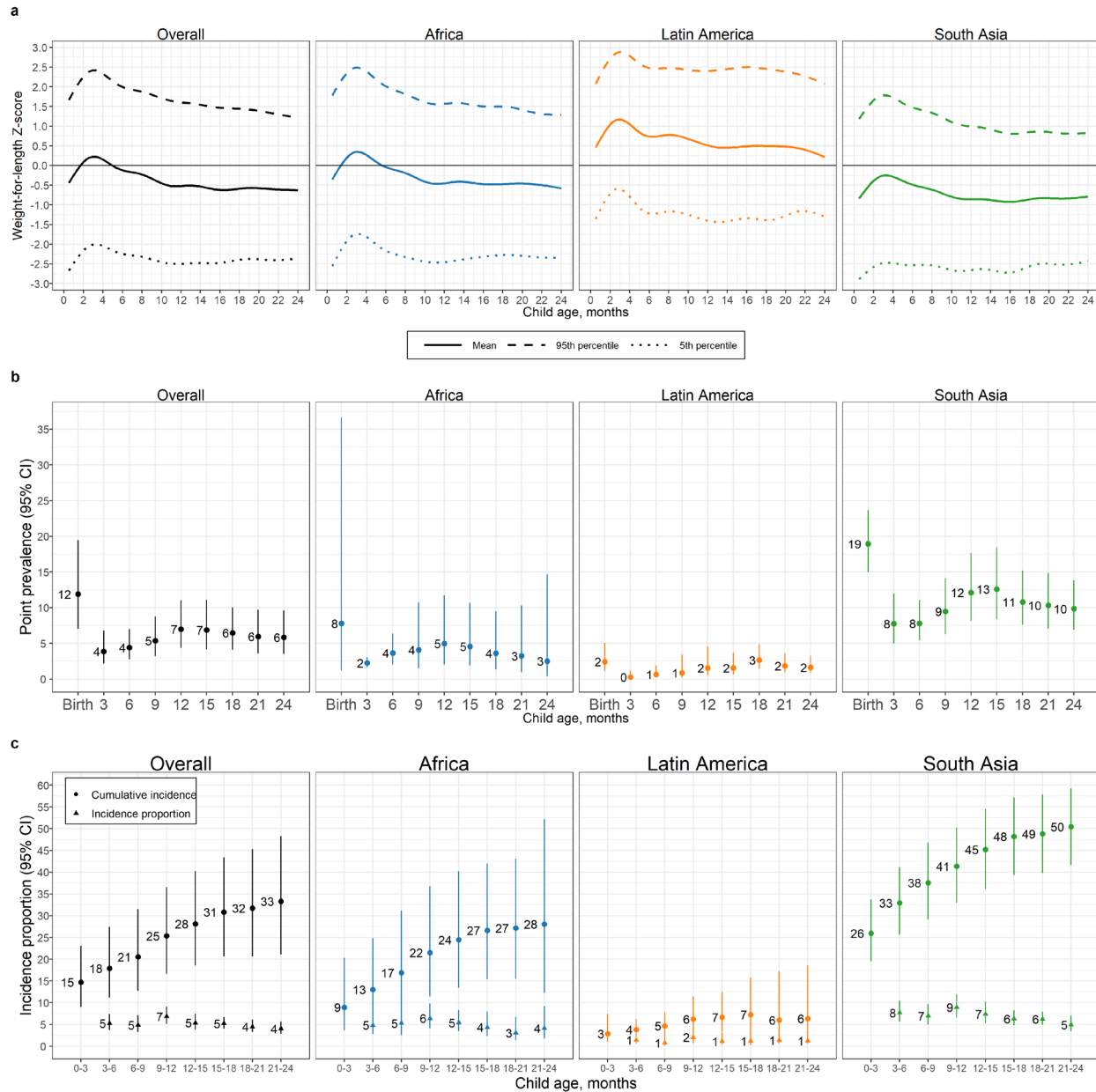
- 451 50. Global, regional, and national causes of under-5 mortality in 2000–15: an updated systematic analysis with
452 implications for the Sustainable Development Goals - ScienceDirect.
453 <https://www.sciencedirect.com/science/article/pii/S0140673616315938>.
- 454 51. Efficacy of three feeding regimens for home-based management of children with uncomplicated severe acute
455 malnutrition: a randomised trial in India | BMJ Global Health. <https://gh.bmj.com/content/1/4/e000144>.
- 456 52. Victora, C. G. The Association between Wasting and Stunting: An International Perspective. *J. Nutr.* **122**, 1105–
457 1110 (1992).
- 458 53. Post, C. L. & Victora, C. G. The low prevalence of weight-for-height deficits in Brazilian children is related to
459 body proportions. *J. Nutr.* **131**, 1290–1296 (2001).
- 460 54. Harris, I., Jones, P. D., Osborn, T. J. & Lister, D. H. Updated high-resolution grids of monthly climatic
461 observations – the CRU TS3.10 Dataset. *Int. J. Climatol.* **34**, 623–642 (2014).
- 462 55. Walsh, R. P. D. & Lawler, D. M. Rainfall Seasonality: Description, Spatial Patterns and Change Through Time.
463 *Weather* **36**, 201–208 (1981).
- 464 56. Christian, P. *et al.* Risk of childhood undernutrition related to small-for-gestational age and preterm birth in
465 low- and middle-income countries. *Int J Epidemiol* **42**, 1340–1355 (2013).
- 466 57. Mertens, A. *et al.* (submitted). Causes and consequences of child growth failure in low- and middle-income
467 countries. (2020).
- 468 58. Aguayo, V. M., Aneja, S., Badgaiyan, N. & Singh, K. Mid upper-arm circumference is an effective tool to identify
469 infants and young children with severe acute malnutrition in India. *Public Health Nutr.* **18**, 3244–3248 (2015).
- 470 59. Kikafunda, J. K., Walker, A. F., Collett, D. & Tumwine, J. K. Risk factors for early childhood malnutrition in
471 Uganda. *Pediatrics* **102**, E45 (1998).
- 472 60. Berkley, J. *et al.* Assessment of severe malnutrition among hospitalized children in rural Kenya: comparison of
473 weight for height and mid upper arm circumference. *JAMA* **294**, 591–597 (2005).
- 474 61. Manary, M. J. & Sandige, H. L. Management of acute moderate and severe childhood malnutrition. *BMJ* **337**,
475 a2180 (2008).
- 476 62. Collins, S. *et al.* Management of severe acute malnutrition in children. *The Lancet* **368**, 1992–2000 (2006).
- 477 63. Perumal, N. *et al.* Effect of correcting for gestational age at birth on population prevalence of early childhood
478 undernutrition. *Emerg. Themes Epidemiol.* **15**, 3 (2018).
- 479
- 480
- 481
- 482



483

484 **Figure 1 | Summaries of included cohorts.**

485 (a) Number of observations (1000s) across cohorts by age in months. (b) Mean weight-
 486 for-length Z-scores (WLZ) by age in months for each included cohort. Cohorts are
 487 sorted by geographic region and overall mean weight-for-length Z-score. The country of
 488 each cohort and the start year is printed by each cohort name. (c) The number of
 489 observations included in each cohort. (d) Overall wasting prevalence by cohort, defined
 490 as proportion of measurements with $WLZ < -2$.



491

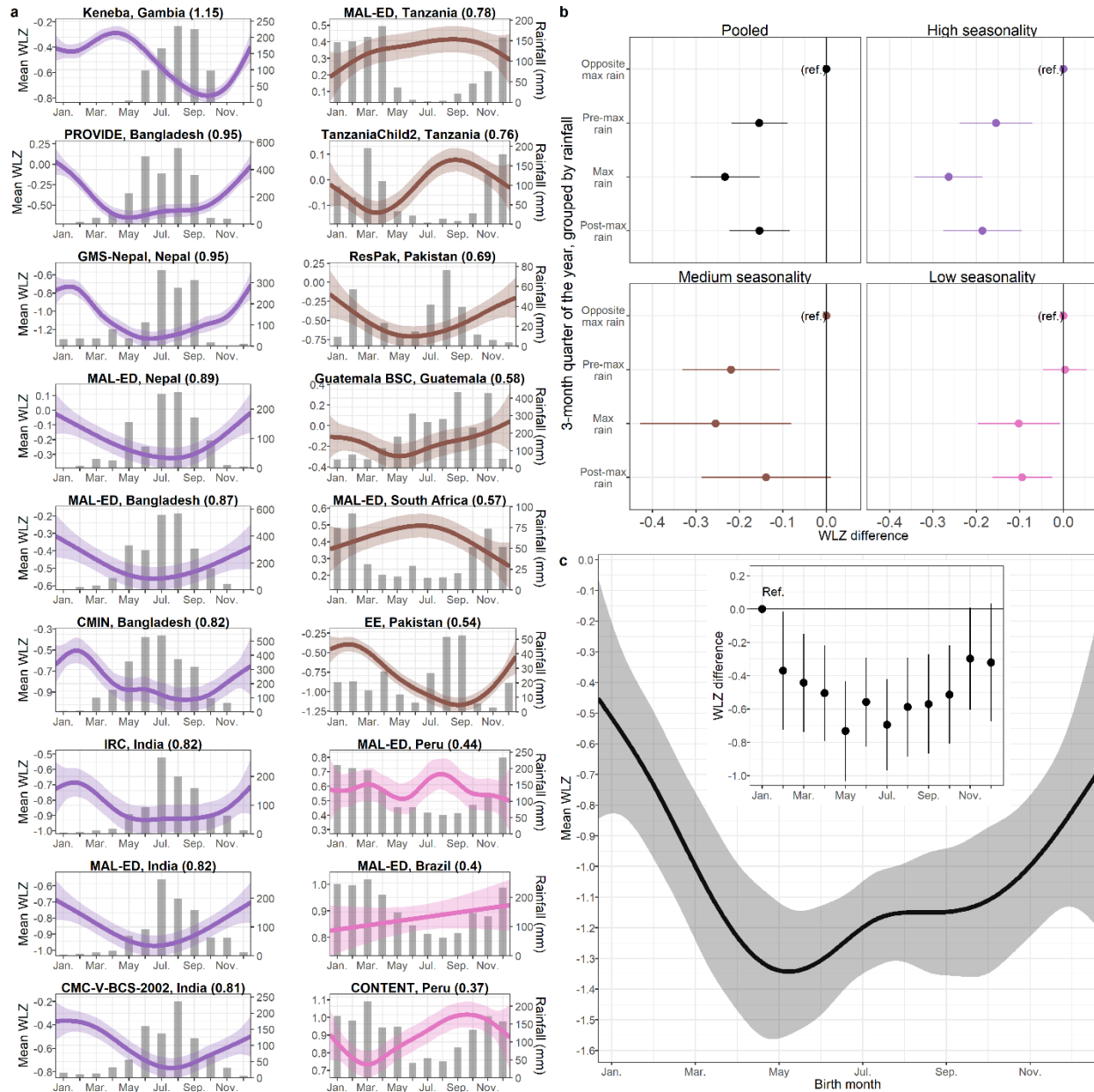
492 **Figure 2 | WLZ, prevalence and incidence of wasting by age and region.**

493 (a) Mean, 5th and 95th percentile of weight-for-length Z-score (WLZ) by age in 18 included longitudinal
 494 cohorts, overall (N=18 studies; N=3,858-10,388 observations per month) and stratified by region (Africa:
 495 N=4 studies, N=1,067-5,428 observations; Latin America: N=4 studies, N=417-1358 observations, South
 496 Asia 10 studies, N=2,223-4,142 observations).

497 (b) Age-specific wasting prevalence, defined as WLZ < -2, overall (N=3,985-9,353 children) and stratified
 498 by region (Africa: 1,701-5,017 children, Latin America: N=209-996 children, South Asia: N=1,994-3,605
 499 children).

500 (c) Age-specific wasting incidence overall (N=5,848-9,841 children) and stratified by region (Africa:
 501 N=2,249-5,259 children, Latin America: N=572-1,010 children, South Asia: N=2,916-3,832 children).
 502 Cumulative incidence measures the proportion of children who have ever experienced wasting since
 503 birth, while the new incident cases represent the proportion of children at risk who had an episode of
 504 wasting begin during the age range.

505 Estimation details for all plots are in the methods.

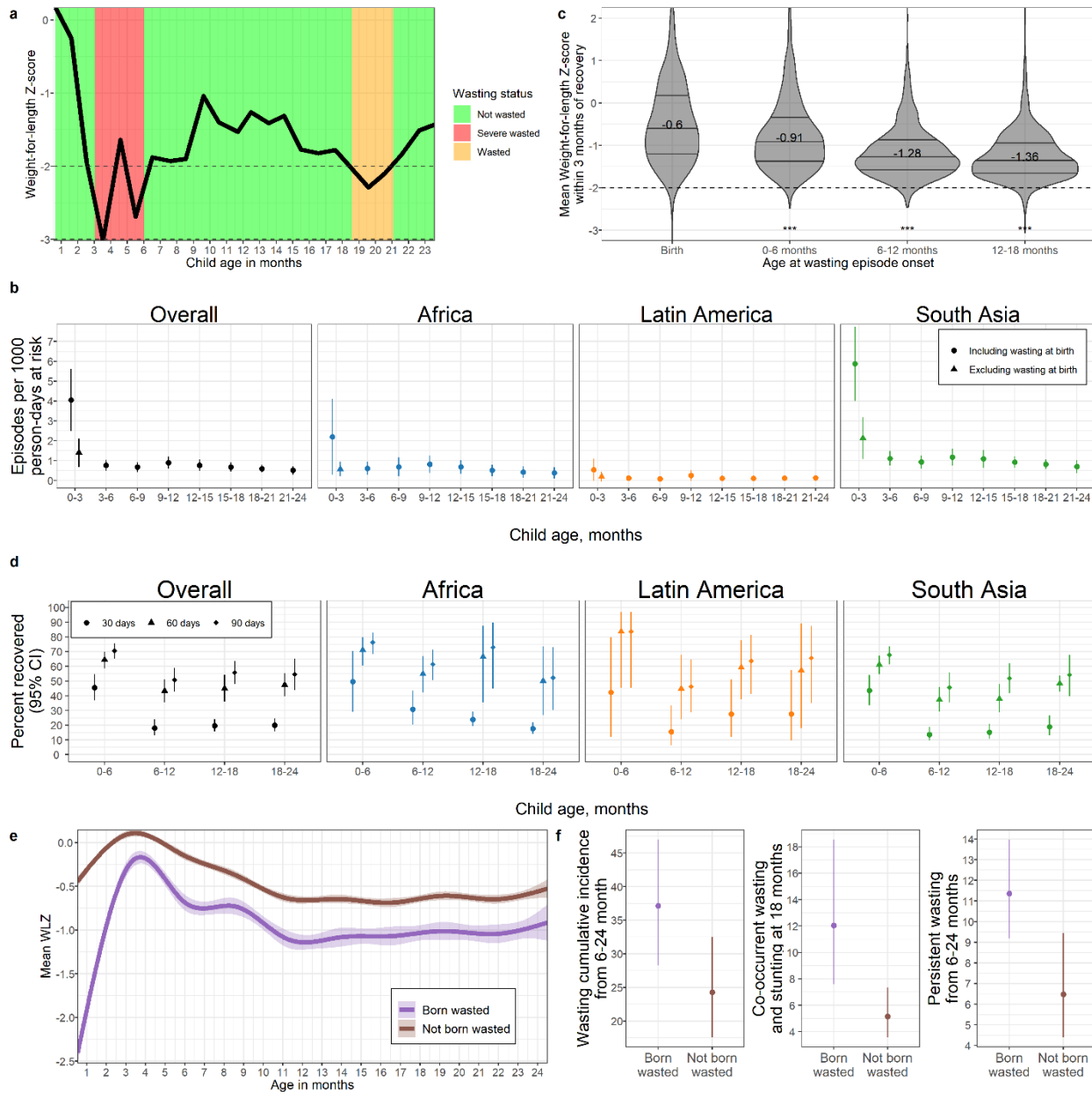


506
507
508
509
510
511
512
513
514
515
516
517
518
519

Figure 3 | Mean weight-for-length Z-scores by age and season.

- (a) Cubic splines of mean WLZ over day of the year, superimposed over histograms of monthly mean rainfall over study periods, with the seasonality index printed in parentheses beside the cohort name, and splines colored by high (≥ 0.8), medium (< 0.8 and ≥ 0.5), and low seasonality categories (< 0.5). Sample sizes range from 215 children (8,339 measurements) in CONTENT to 2,396 (29,596 measurements) in the Tanzania Child cohort.
- (b) Mean differences in child WLZ between quarters of the year defined around the 3-month period with the highest mean rainfall, pooled across cohorts in panel (a) overall (N=18 cohorts, 2,545-40,115 observations) and by seasonality index (high: N=9 cohorts, 5,372-40,115 observations, medium: N=6 cohorts, 2,545-29,518 observations, low: N=3 cohorts, 4,837-8,339 observations).
- (c) Cubic spline of mean WLZ at birth across birth months among 2,334 children with WLZ measured at birth in ten South Asian cohorts, with mean differences in WLZ at birth by birth month in the inset plot.

Estimation details for all plots are in the methods.



521 **Figure 4| Wasting incidence rate and recovery.**

522 (a) Example child WLZ trajectory and wasting episode classifications.

523 (b) Wasting incidence rate per 1,000 days at risk, stratified by age and region (Overall: N=484,737-
524 769,154 child-days per estimate, Africa: N=245,046-407,940 child-days, Latin America: N= 44,306-
525 101,549 child-days, South Asia: N=178,112-302,470 child-days).

526 (c) The distribution of children's mean WLZ in the three months following recovery from wasting, with
527 inter-quartile range marked. Children wasted before age 6 months experienced larger improvements in
528 WLZ compared with children wasted at older ages ($p < 0.001$). The analysis uses 3,563 observations of
529 2,205 children who recovered from wasting episodes, with 1,219 observations at birth, 614 observations
530 from 0-6 months, 794 observations from 6-12 months, and 936 observations from 12-18 months.

531 (d) Recovery proportion from wasting within 30, 60, and 90 days of episode onset (N=18 cohorts, 5,373
532 wasting episodes).

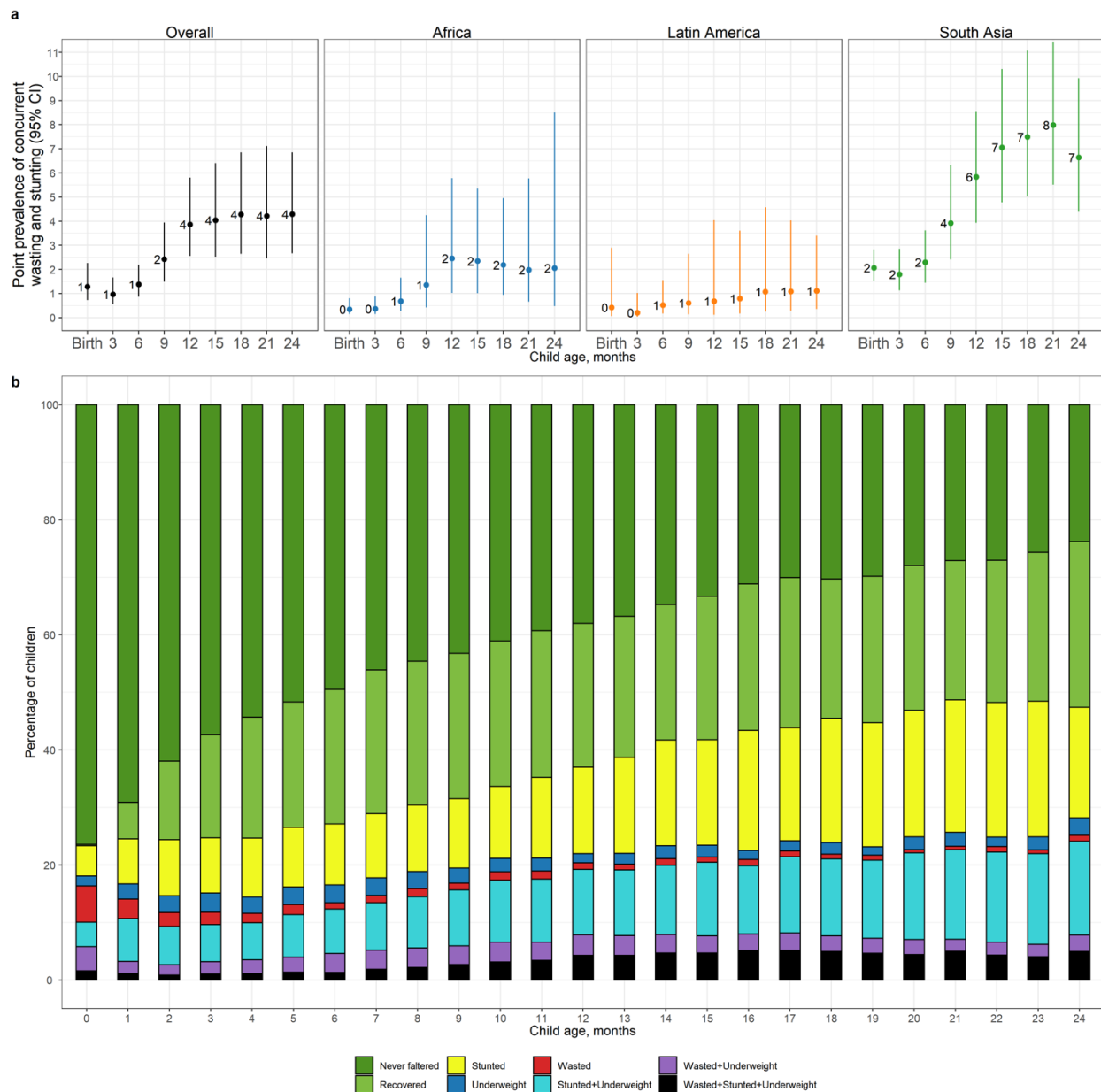
533 (e) Mean WLZ by age shows that children born wasted (N=758 children, 13,958 observations) did not
534 catch up to children not born wasted (N=3,306 children, 61,618 observations).

535 (f) Higher measures of wasting after 6 months of age among children born wasted (N=758) compared to
536 those who were not (N=3,306).

537 Estimation details for all plots are in the methods.

538

539



540
541
542
543
544
545
546
547
548
549
550
551
552

Figure 5| Co-occurrence of wasting, stunting, and underweight.

(a) Age-specific prevalence of co-occurrent wasting and stunting overall (N=3,984 to 9,346 children) and stratified by region (Africa: N=1,700-5,014 children, Latin America: N= 290-996 children, South Asia: N=1,994-3,601 children).

(b) Proportion of children with measures of growth failure, alone or combined. Children never faltered at an age in months had never been wasted, stunted, or underweight, and children in the “recovered” category were not wasted, stunted, or underweight but had experienced at least one of these conditions previously. All children who were wasted and stunted were also underweight. The number of children contributing to each age ranges from 2,077 to 8,652 children, with 10,815 total children.

Estimation details for all plots are in the methods.

553 **Materials and Methods**

554 **Study designs and inclusion criteria**

555 We included all longitudinal observational studies and randomized trials available through the *ki* project
556 on April 2018 that met five inclusion criteria (Extended Data Figure 1): 1) conducted in low- or middle-
557 income countries; 2) enrolled children between birth and age 24 months and measured their length and
558 weight repeatedly over time; 3) did not restrict enrollment to acutely ill children; 4) enrolled at least 200
559 children; 5) collected anthropometry measurements at least monthly. The frequency of measurements
560 was assessed by calculating the median days between measurements. Our pre-specified analysis
561 protocol stipulated that if randomized trials found effects of interventions on growth, the analysis would
562 only include the control arm only; yet, all intervention trials that met the inclusion criteria had null
563 effects on growth, so all arms were included. We included all children under 24 months of age, assuming
564 months were 30.4167 days. We excluded extreme measurements of WLZ > 5 or < -5 and of WAZ < -6 or
565 > 5, consistent with 2006 WHO Growth Standards recommendations.¹ We checked for cohort-wide
566 anthropometry measurement quality by plotting Z-score densities and calculating the proportion of
567 length measurements where length decreased beyond the expected technical error of measurement
568 compared to the last measurement on a child. One cohort, MAL-ED Pakistan, was excluded because
569 measurements exhibited a multimodal WLZ distribution with scores binned at -2, -1.5, and -1 instead
570 of continuously distributed.

571

572

573 **Outcome definitions**

574 We used the following outcome measures in the analysis:

575 Weight-for-Length Z-scores were calculated using the 2006 WHO growth standards,² and mean WLZ was
576 calculated within strata of interest. We used the medians of triplicate measurements of lengths and
577 weights of children from pre-2006 cohorts to re-calculate Z scores to the 2006 standard.

578 Prevalent wasting was defined as the proportion of measurements within a specific stratum (e.g., age)
579 below the 2006 WHO standard -2 WLZ, and analogously below the 2006 WHO standard -3 WLZ for
580 severe wasting. For each age, we included children with WLZ measurements within one month before
581 and after that age in the point prevalence estimate (e.g., for point prevalence at 6 months, we include
582 children aged 5-7 months).

583 Incident wasting episodes were defined as a change in WLZ from above -2 Z in the prior measurement
584 to below -2 Z in the current measurement. Similarly, we defined severe wasting episodes using -3 Z
585 cutoff. We assumed a 60-day washout period between episodes of wasting before a new episode of
586 wasting could occur (Fig 4a). Children were considered at risk for wasting at birth, so children born
587 wasted were considered to have an incident episode of wasting at birth. Children were also assumed to
588 be at risk of wasting at the first measurement in studies that enrolled children after birth, so children
589 wasted at the first measurement in a non-birth cohort were assumed to have incident wasting occurring
590 at the age halfway between birth and the first measurement.

591 Incidence proportion of wasting was calculated during a defined age range (e.g. 6-12 months) as the
592 proportion of children at risk who became wasted during the age period (the onset of new episodes).

593 Recovery from wasting was defined as a WLZ change from below to above -2 Z among children who are
594 currently wasted or severely wasted. We required a child to maintain WLZ above -2 for 60 days to be
595 considered “recovered”. Children were only considered “at risk” for recovery if their prior
596 measurement was below -2 WLZ. We measured the proportion of children who recover from moderate
597 wasting (WLZ < -2) within 30, 60, and 90 days of the onset of the episode. We assumed recovery from

598 wasting was spontaneous because we did not have consistent information on referral guidelines across
599 cohorts in the analysis, but some children with moderate wasting may have been referred to clinical
600 facilities for outpatient treatment.

601 Wasting duration was estimated by counting the days between the onset of wasting and recovery within
602 an individual child. We assumed that the episode started or ended at the midpoint between
603 measurements. For example, if a child was not wasted at age 40 days, wasted at age 70 days, and not
604 wasted at age 100 days, the duration of the wasting episode was: $(70-40)/2 + (100-70)/2 = 30$ days. We
605 calculated the median duration of wasting episodes among cohorts where children recovered during the
606 study period from >50% of observed wasting episodes, as the duration of episodes that extended
607 beyond study period is unknown. Therefore, the median duration could only be calculated when less
608 than half of episodes were censored. Confidence intervals were calculated using the quantile method.

609 Incidence rate of wasting was calculated during defined age ranges as the number of incident episodes
610 of wasting per 1,000 child-days at risk during the age range. Children were considered “at risk” for
611 incident wasting episodes if they were not currently wasted and were classified as recovered from any
612 prior wasting episode (beyond the 60-day washout period). Therefore, wasted children, or children
613 within the washout period, did not contribute to the person-time at risk for wasting used to calculate
614 wasting incidence. To calculate person-time at risk of wasting, we assumed that the onset of a wasting
615 episode occurred when the child’s age was at the midpoint between the measurement of $WLZ \geq -2$ and
616 the measurement of $WLZ < -2$, and conversely the time of recovery occurred when the child’s age was
617 at the midpoint between the last measurement of $WLZ < -2$ and the first measurement of $WLZ \geq -2$
618 within the 60-day washout period (Fig 4a).

619 Persistent wasting was defined as a >50% longitudinal prevalence of below -2 WLZ (wasting), and
620 analogously >50% longitudinal prevalence of below -3 WLZ for persistent severe wasting.³

621 Concurrent prevalence of wasting and stunting was defined as the proportion of measurements at a
622 specific age when a child was both wasted and stunted at the same measurement. For each age, we
623 included children with WLZ and LAZ measurements within one month before and after that age in the
624 point prevalence estimate (e.g., for point prevalence at 6 months, we include children aged 5-7 months).

625 Prevalent underweight was defined as the proportion of measurements at a specific age below the 2006
626 WHO standard -2 WAZ. For each age, we included children with WAZ measurements within one month
627 before and after that age in the point prevalence estimate (e.g., for point prevalence at 6 months, we
628 include children aged 5-7 months).

629

630 Subgroups of interest

631 We stratified the above outcomes of interest within the following subgroups: Child age, grouped into
632 one, three, or six month intervals, (depending on the outcome); the region of the world (Asia, sub-
633 Saharan Africa, Latin America); the month of the year, and the combinations of the above categories.

634

635

636 **Statistical analysis**

637 All analyses were conducted in R version 3.6.2. Supplementary pooled, regional, and cohort-specific
638 results, and sensitivity analyses are available in online supplements at ([https://child-
639 growth.github.io/wasting](https://child-growth.github.io/wasting)).

640

641 Fixed and random effects models

642 We estimated wasting outcomes within specific cohorts and pooled estimates within each age strata
643 using random effects models. We estimated overall pooled effects, and pooled estimates specific to
644 South Asian, African, or Latin American cohorts. We pooled all statistics using random effects models,
645 and repeated the pooling using fixed effects models as a sensitivity analysis. The pooling methods are
646 detailed in Benjamin-Chung (2020).⁴

647 All pooling was completed using the `rma()` function from the “metafor” package in the R language
648 (version 3.4.2).⁵

649

650 Fitted spline curves

651 Fitted smoothers used in manuscript figures were fit using cubic splines and generalized cross-
652 validation, except in Figure 2a, where locally estimated scatterplot smoothing (LOESS) was applied to
653 monthly mean weight-for-length Z-scores pooled across cohorts using random-effects models.⁶ We
654 estimated approximate 95% simultaneous confidence intervals around the cubic splines using a
655 parametric bootstrap that resampled from the posterior the generalized additive model parameter
656 variance-covariance matrix.⁷

657 Seasonality analysis

658 We compared mean WLZ over day of the year, over child birth day, and over seasons defined by
659 rainfall. We estimated mean WLZ by cohort over day of the year and child birth day using cubic splines
660 (Fig. 3a, c).⁸ Splines of WLZ over day of the year were plotted over country-level monthly mean rainfall
661 averaged over the years a study measured child anthropometry below ages 24 months (Fig. 3a). Rainfall
662 data was extracted from the University of East Anglia Climate Research Unit CRU TS dataset (version
663 3.23, 23 October 2015).⁹

664 The season of peak rainfall was defined as the three-month period with the highest mean
665 rainfall. Mean differences in WLZ between three-month quarters was estimated using linear regression
666 models. We compared the consecutive three months of the maximum average rainfall over the study
667 period, as well as the three months prior and the three months after the maximum-rainfall period, to a
668 reference level of the three months opposite the calendar year of the maximum-rainfall period. We
669 used all WLZ measurements of children under two years of age.

670 Estimates were unadjusted for other covariates because we assumed that seasonal effects on
671 WLZ were exogenous and could not be confounded. Mean differences in WLZ were pooled across
672 cohorts using random-effects models, with cohorts grouped by the Walsh and Lawler seasonality
673 index.¹⁰ Cohorts from years with a seasonal index ≥ 0.8 were classified as occurring in locations with high
674 seasonality, cohorts with a seasonal index < 0.8 and ≥ 0.5 were classified as occurring in locations with
675 medium seasonality, and cohorts with a seasonal index < 0.5 were classified as occurring in locations
676 with low seasonality, with cutpoints chosen to keep cohorts from the same country grouped together.¹⁰

677

678

$$\text{Seasonal Index} = \frac{1}{R} \sum_{n=1}^{n=12} \left| X_n - \frac{R}{12} \right|$$

679 Where R = total annual precipitation and X_n = monthly precipitation.

680

681

682

683

684 Estimation of mean LAZ, WAZ, and WLZ by age in Demographic and Health Surveys and *ki*
685 cohorts

686 We downloaded standard DHS individual recode files for each country from the DHS program
687 website (<https://dhsprogram.com/>). We used the most recent standard DHS datasets for the individual
688 women's, household, and length and weight datasets from each country, and we estimated age-
689 stratified mean LAZ, WAZ, and WLZ from ages 0 to 24 months within each DHS survey, accounting for
690 the complex survey design and sampling weights. See Benjamin-Chung et. al (2020) for additional details
691 on the DHS data cleaning and analysis.⁴ We compared DHS estimates with mean LAZ, WAZ, and WLZ by
692 age in the *ki* study cohorts with penalized cubic-splines with bandwidths chosen using generalized cross-
693 validation.⁸

694

695 Figure-specific methods

696 Figure 2.

- 697 (a) Spline fits with approximate 95% simultaneous confidence intervals.
698 (b) Estimates include children with WLZ measurements within one month before and after
699 that age in the point prevalence estimate, averaging multiple measurements if available
700 for a child. We pooled estimates across studies using random effects models fit with
701 restricted maximum likelihood estimation. Vertical bars indicate 95% confidence intervals.
702 (c). We pooled estimates across studies using random effects models fit with restricted
703 maximum likelihood estimation. Vertical bars indicate 95% confidence intervals. While
704 cumulative incidence cannot decrease over time, the estimated pooled cumulative
705 incidence decreased between the 15-18 month and 18-21 month age bands in the Latin
706 America panel because fewer children were measured between 18-21 months.

707

708 Figure 3.

- 709 (a) Rainfall data was extracted from the University of East Anglia Climate Research Unit
710 CRU TS dataset (version 3.23, 23 October 2015).⁹ Spline fits with approximate 95%
711 simultaneous confidence intervals are colored by category of seasonal index (high: \geq
712 0.8, medium: < 0.8 and ≥ 0.5 , low: < 0.5) defined by rainfall, and the Walsh and
713 Lawler seasonal index is printed within parentheses next to cohort names.¹⁰ Higher
714 seasonality indices indicate more heterogeneity in rainfall across months of the year.
715 Y-axis scales vary to best illustrate the seasonal averages for individual cohorts.
716 (b) Cohort-specific mean differences were estimated using linear regressions,
717 unadjusted for other covariates. Cohort-specific estimates of seasonal differences in
718 WLZ were pooled using random-effects models.¹⁰ The three-month period opposite
719 the three months of maximum rainfall was used as the reference level (e.g., if June-
720 August was the period of maximum rainfall, the reference level is child mean WLZ
721 during January-March).
722 (c) Estimates are from children with WLZ measured at birth in South Asian cohorts in
723 both the primary and the inset plot. Shaded region around spline fit indicates its 95%
724 simultaneous confidence interval. In the inset plot, the estimation of mean differences
725 in WLZ based on month of birth use the same methods as in Panel (b) to estimate
726 cohort-specific difference, then pool using fixed effect models due to data sparsity.
727 January is used as the reference level

728 Figure 4.

- 729 (a) Green intervals mark when the child was not wasted, the yellow interval marks when
730 a child was moderately wasted, and the red interval marks when a child was severely
731 wasted. The age of wasting onset was assumed to occur halfway between a
732 measurement of WLZ < -2 and the previous measurement of WLZ ≥ -2 . Recovery
733 from an episode of wasting or severe wasting occurred when a child had

- 734 measurements of $WLZ \geq -2$ for at least 60 days, with the age of recovery assumed to
735 be halfway between the last measurement of $WLZ < -2$ and the first measurement of
736 $WLZ \geq -2$.
- 737 (b) Estimates are stratified by child age and geographic region. Wasting incidence was
738 calculated as described in panel (a), and the person-time used in the denominator
739 was determined by the number of days a child was at risk of a new wasting episode
740 (not wasted or in the 60-day recovery period). Incidence rate was estimated by
741 pooling information over cohorts using a random effects estimator; vertical lines
742 indicate 95% confidence intervals.
- 743 (c) Violin plots illustrate the distribution of WLZ in the 3 months following recovery from
744 wasting episodes, with horizontal lines marking the inter-quartile range and
745 annotated with the median WLZ after recovery. Distributions of WLZ after recovery
746 are stratified by age at wasting onset (birth, 0-6m, 6-12m, 12-24m). The horizontal
747 lines within the violins mark the interquartile range, with the median WLZ labeled, and
748 the dashed line marks the -2 Z threshold used to define wasting.
- 749 (d) Proportion of children who recovered from a wasting episode within 30, 60, and 90
750 days of episode onset, stratified by region and age at the onset of the wasting
751 episode. Recovery was defined as 2 or more consecutive measures of $WLZ > -2$.
752 Proportions estimated by pooling information over cohorts using a random effects
753 estimator; vertical lines indicate 95% confidence intervals.
- 754 (e) Spline curves of children's WLZ over the first two years of life, stratified by wasting
755 status at birth, show that children born wasted experienced large gains in WLZ in the
756 first four months, but on average their WLZ did not catch up to children not born
757 wasted. Estimates are stratified by wasting status at birth, which includes the first
758 measure of a child within 7 days of birth.
- 759 (f) Estimates of cumulative incidence of wasting from 6-24 months, prevalence of co-
760 occurring wasting and stunting at 18 months, and proportion of children persistently
761 wasted from 6-24 months of age among children born wasted compared to those
762 who were not.

763 Figure 5.

- 764 (a) Estimates were pooled across cohorts using random effects models fit with restricted
765 maximum likelihood estimation. All children who were wasted and stunted were also
766 underweight.
- 767 (b) Proportions in each category were calculated within cohorts, pooled using random
768 effects, and scaled so percentages added to 100%.

769

770 Sensitivity analyses

771 We estimated incidence rates and of wasting after excluding children born or enrolled wasted (Fig. 4b).
772 The rationale for this sensitivity analysis is that incident cases at birth imply a different type of
773 intervention (i.e., prenatal) compared with postnatal onset of wasting. We estimated the overall and
774 region stratified prevalence of persistent wasting and of underweight and severe wasting by age
775 (Extended data fig. 4). We also examined the effect of shorter (30 day) and longer (90) day washout
776 period when determining if a child was again at risk when estimating wasting incidence and wasting
777 recovery rates (Extended data fig. 5). Within cohorts that measured child gestational age at birth, we
778 estimated the prevalence of stunting and underweight at birth both uncorrected and corrected for
779 gestational age at birth using the Intergrowth standards.¹¹ Within cohorts that measured middle-upper-
780 arm circumference (MUAC), and alternative measurement for classifying wasting than weight-for-length
781 Z-score, we compared wasting prevalence estimated with WLZ and with MUAC. We also re-estimate
782 primary results dropping observations of children at birth within the MRC Keneba cohort, which used a
783 different team to measure child anthropometry at birth from the trained anthropometrists used in
784 follow-up measurements. Lastly, we compared estimates pooled using random effects models, which

785 are more conservative in the presence of study heterogeneity, with estimates pooled using fixed effects
786 (inverse variance weighted) models, (results in online supplements at [https://child-](https://child-growth.github.io/wasting)
787 [growth.github.io/wasting](https://child-growth.github.io/wasting)).

788

789 **Data and code availability**

790 The data that support the findings of this study are available from the Bill and Melinda Gates Foundation
791 Knowledge Integration project upon reasonable request. Replication scripts for this analysis are
792 available here: <https://github.com/child-growth/ki-longitudinal-growth>.

793

794

795 **Methods References**

- 796 1. Organization, W. H. & Fund (UNICEF), U. N. C. *Recommendations for data collection, analysis and reporting on*
797 *anthropometric indicators in children under 5 years old.* (World Health Organization, 2019).
- 798 2. WHO Multicentre Growth Reference Study Group. WHO child growth standards: length/height-for-age,
799 weight-for-age, weight-for-length, weight-for-height and body mass index-for-age: Methods and
800 development. *Geneva World Health Organ.* 312 pages (2006).
- 801 3. Richard, S. A. *et al.* Wasting Is Associated with Stunting in Early Childhood123. *J. Nutr.* **142**, 1291–1296 (2012).
- 802 4. Benjamin-Chung, J. *et. al.* (submitted). Early childhood linear growth failure in low-and middle-income
803 countries. (2020).
- 804 5. Viechtbauer, W. Conducting Meta-Analyses in R with the metafor Package. *J. Stat. Softw.* **36**, 1–48 (2010).
- 805 6. Cleveland, W. S. & Loader, C. Smoothing by Local Regression: Principles and Methods. in *Statistical Theory and*
806 *Computational Aspects of Smoothing* (eds. Härdle, W. & Schimek, M. G.) 10–49 (Physica-Verlag HD, 1996).
807 doi:10.1007/978-3-642-48425-4_2.
- 808 7. Ruppert, D., Wand, M. P. & Carroll, R. J. *Semiparametric Regression.* (Cambridge University Press, 2003).
809 doi:10.1017/CBO9780511755453.
- 810 8. Wood, S. N., Pya, N. & Säfken, B. Smoothing Parameter and Model Selection for General Smooth Models. *J.*
811 *Am. Stat. Assoc.* **111**, 1548–1563 (2016).
- 812 9. Harris, I., Jones, P. D., Osborn, T. J. & Lister, D. H. Updated high-resolution grids of monthly climatic
813 observations – the CRU TS3.10 Dataset. *Int. J. Climatol.* **34**, 623–642 (2014).
- 814 10. Walsh, R. P. D. & Lawler, D. M. Rainfall Seasonality: Description, Spatial Patterns and Change Through Time.
815 *Weather* **36**, 201–208 (1981).
- 816 11. Papageorghiou, A. T. *et al.* The INTERGROWTH-21st fetal growth standards: toward the global integration of
817 pregnancy and pediatric care. *Am. J. Obstet. Gynecol.* **218**, S630–S640 (2018).

818

819

820

821

822

823

824

825

826

827

828

829 Acknowledgments

830 This research was financially supported by a global development grant (OPP1165144) from the Bill &
831 Melinda Gates Foundation to the University of California, Berkeley, CA, USA. We would also like to thank
832 the following collaborators on the included cohorts and trials for their contributions to study planning,
833 data collection, and analysis: Muhammad Sharif, Sajjad Kerio, Ms. Urosa, Ms. Alveen, Shahneel Hussain,
834 Vikas Paudel (Mother and Infant Research Activities), Anthony Costello (University College London),
835 Benjamin Torun, Lindsey M Locks, Christine M McDonald, Roland Kupka, Ronald J Bosch, Rodrick
836 Kisenge, Said Aboud, Molin Wang, and all other members of the study staffs and field teams. We would
837 also like to thank all study participants and their families for their important contributions.

838

839 Author contributions

840 Conceptualization: A.M., J.B., J.M.C., K.H.B., P.C., B.F.A

841 Funding Acquisition: J.M.C., A.E.H., M.J.V., B.F.A.

842 Data curation: A.M., J.B., J.C., O.S., W.C., A.N., N.N.P., W.J., E.O.C., S.D., N.H., I.M., H.L., R.H., V.S., J.H.,
843 T.N.

844 Formal analyses: A.M., J.B., J.C., O.S., W.C., A.N., N.N.P., W.J., E.O.C., S.D., N.H., I.M., H.L., V.S., B.F.A

845 Methodology: A.M., J.B., J.M.C, J.C., O.S., N.H., I.M., A.E.H., M.J.V., K.H.B., P.C., B.F.A.

846 Visualization: A.M., J.B., A.N., N.N.P., S.D., A.S., J.C., R.H., K.H.B., P.C., B.F.A.

847 Writing – Original Draft Preparation: A.M., J.B., B.F.A.

848 Writing – Review & Editing: A.M., J.B., J.M.C., K.H.B., P.C., B.F.A., *ki* Child Growth Consortium members

849

850 Competing interest declaration

851 Thea Norman is an employee of the Bill & Melinda Gates Foundation (BMGF). Kenneth H Brown and
852 Parul Christian are former employees of BMGF. Jeremy Coyle, Vishak Subramoney, Ryan Hafen, and
853 Jonas Häggström work as research contractors funded by the BMGF.

854

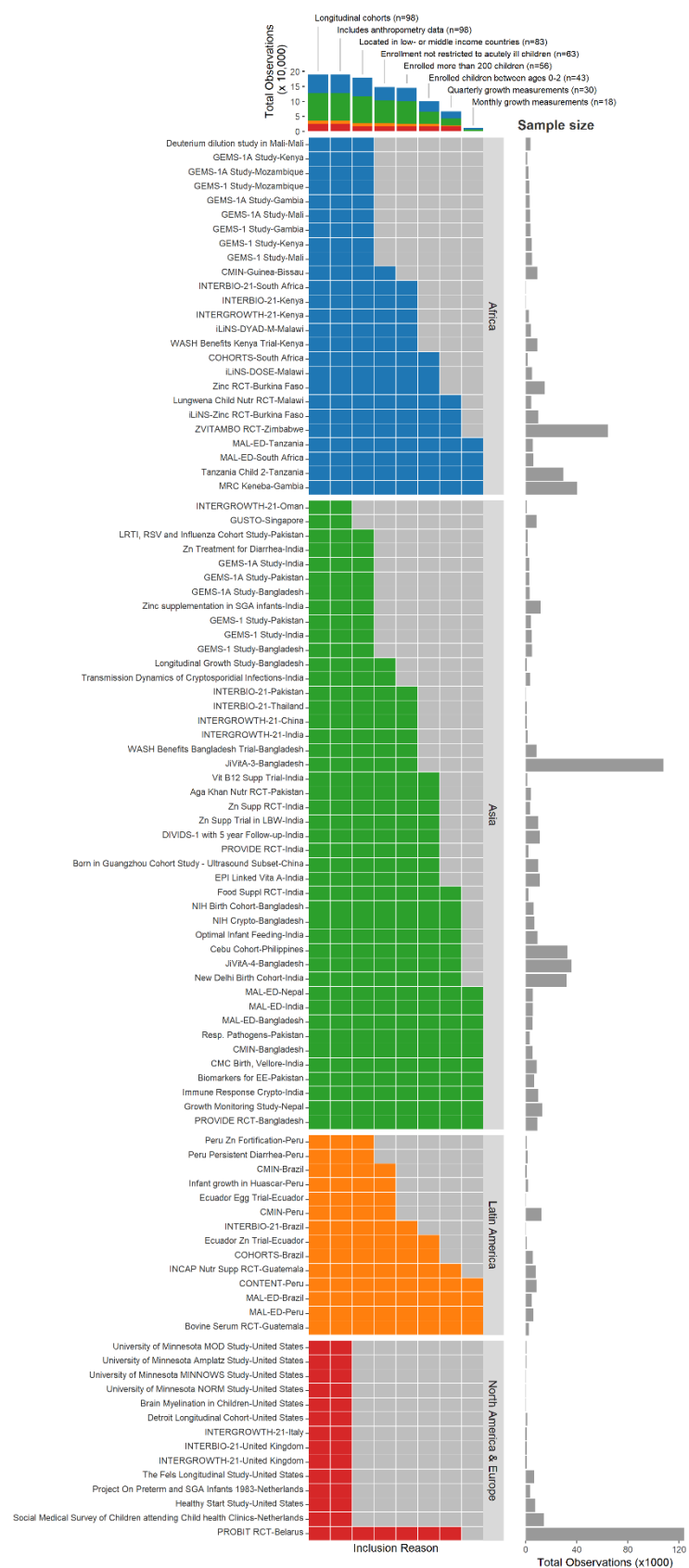
855 Additional information

856 Supplementary Information is available for this paper at <https://child-growth.github.io/wasting>.

857

858 Correspondence and requests for materials should be addressed to Andrew Mertens
859 (amertens@berkeley.edu) and Benjamin F. Arnold (ben.arnold@ucsf.edu).

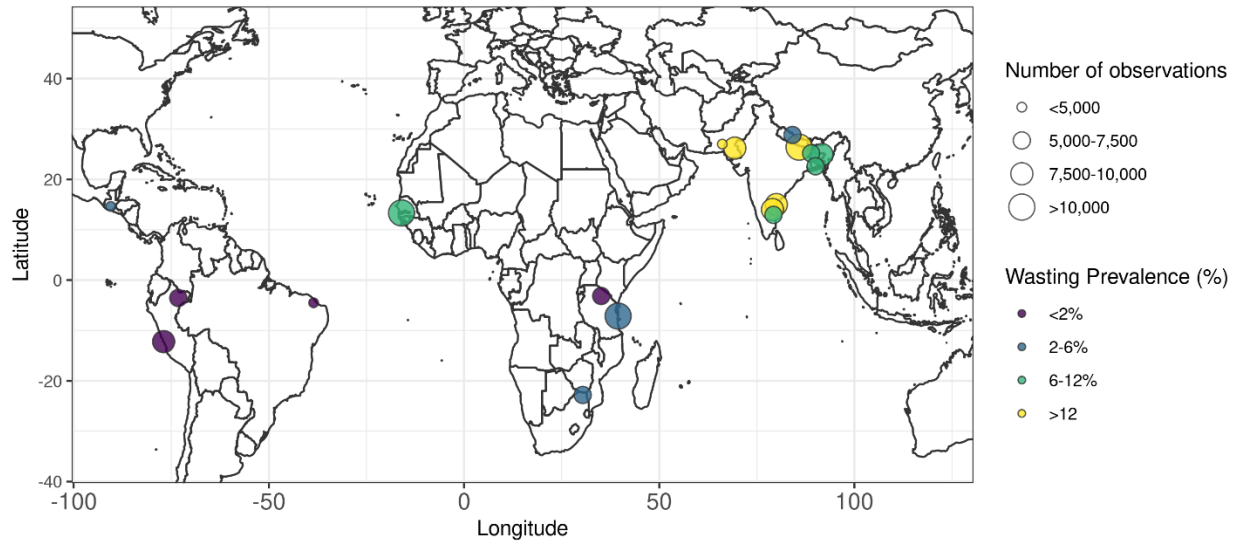
860



862 **Extended Data Figure 1| *ki* cohort selection.**

863 Analyses focused on longitudinal cohorts to enable the estimation of prospective incidence rates
864 and growth velocity. On July 15, 2018, there were 86 longitudinal studies on GHAP. From this
865 set, we applied five inclusion criteria to select cohorts for analysis. Our rationale for each
866 criterion follows. (1) *Studies were conducted in lower income or middle-income countries.* Our
867 target of inference for analyses was children in LMICs, which remains a key target population
868 for preventive interventions. (2) *Studies measured length and weight between birth and age 24*
869 *months.* We were principally interested in growth failure during the first two years of life
870 including at birth, thought to be the key window for linear growth failure ⁷. (3) *Studies did not*
871 *restrict enrollment to acutely ill children.* Our focus on descriptive analyses led us to target, to
872 the extent possible, the general population. We thus excluded some studies that exclusively
873 enrolled acutely ill children, such as children who presented to hospital with acute diarrhea or
874 who were severely malnourished. (4) *Studies enrolled at least 200 children.* Age-stratified
875 incident episodes of stunting and wasting were sufficiently rare that we wanted to ensure each
876 cohort would have enough information to estimate rates before contributing to pooled estimates.
877 (5) *Studies collected anthropometry measurements at least every 3 months.* We limited studies
878 to those with higher temporal resolution to ensure that we adequately captured incident
879 episodes and recovery. We further restricted analyses of wasting incidence and recovery to
880 cohorts with monthly measurements because of high temporal variation in WHZ within
881 individuals.

882
883
884
885
886
887
888
889
890
891
892
893
894



895

896

897 **Extended Data Figure 2 | Geographic location of *ki* cohorts.** Locations are

898 approximate and jittered slightly for display.

899

900

901

902

903

904

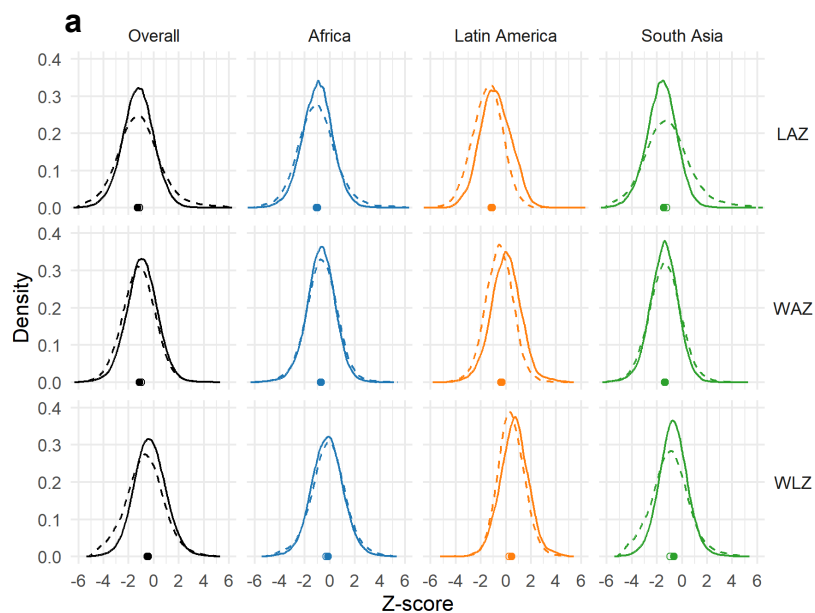
905

906

907

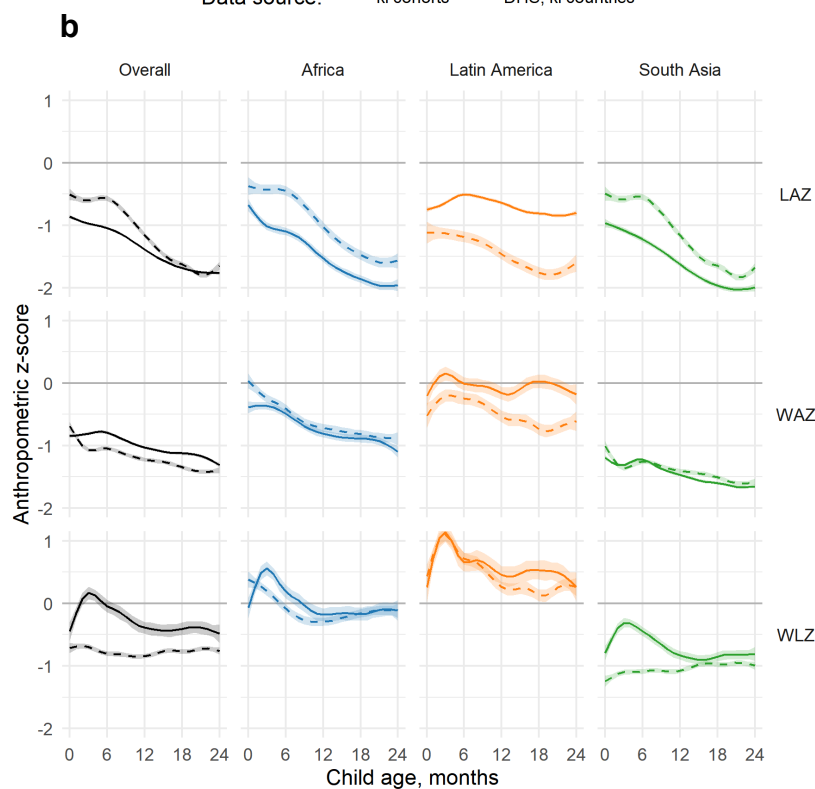
908

909



Data source: — ki cohorts - - DHS, ki countries

910



Data source: — ki cohorts - - DHS, ki countries

911

912 **Extended Data Figure 3 | Comparison of cohort anthropometry to population-**
 913 **based samples**

914 (a) Kernel density distributions of length-for-age (LAZ), weight-for-age (WAZ), and weight-for-
 915 length Z-scores (WLZ) from measurements among children under 24 months old in 18 *ki*

916 longitudinal cohorts (solid line) and among children measured in population-based,
917 Demographic and Health Surveys (dashed). Estimates stratified by WHO region: AFRO (Africa),
918 SEARO (South East Asia), PAHO (Latin America). DHS estimates include the most recent survey
919 from all countries measured in each WHO region. Overall estimates pool across the three
920 regions.

921 **(b)** Mean LAZ, WAZ, and WLZ by age among 18 *ki* longitudinal cohorts (solid line) and in
922 Demographic and Health Surveys (dashed). Means estimated with cubic splines and shaded
923 regions show approximate, simultaneous 95% credible intervals.

924

925

926

927

928

929

930

931

932

933

934

935

936

937

938

939

940

941

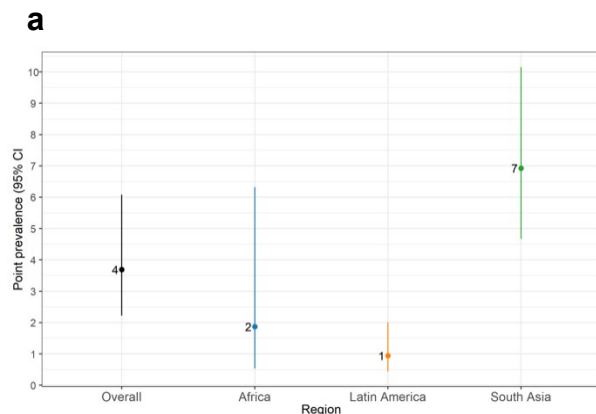
942

943

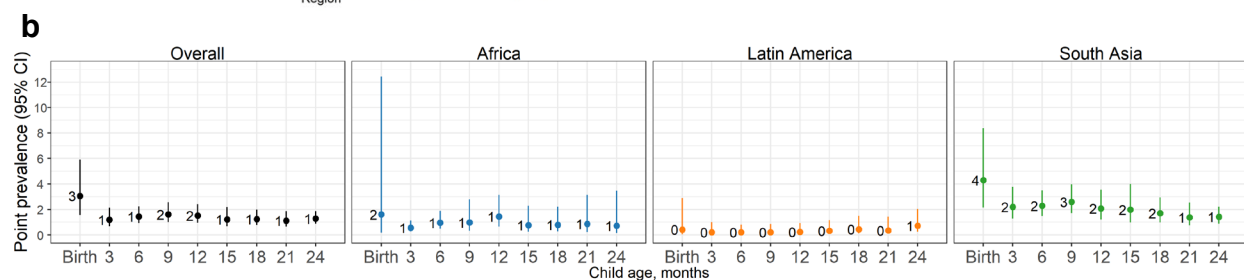
944

945

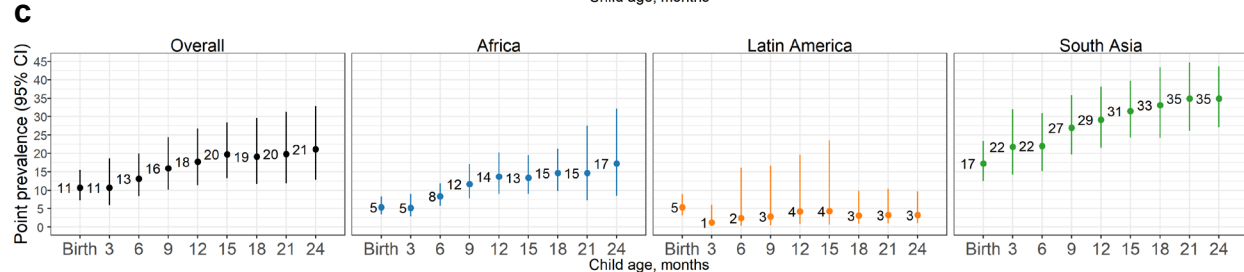
946



947



948



949

950

Extended Data Figure 4 | Prevalence of persistent wasting, severe wasting, and underweight by region.

953 (a) Proportion of children persistently wasted ($\geq 50\%$ of measurements from birth to 24 months of age, overall and stratified by region.

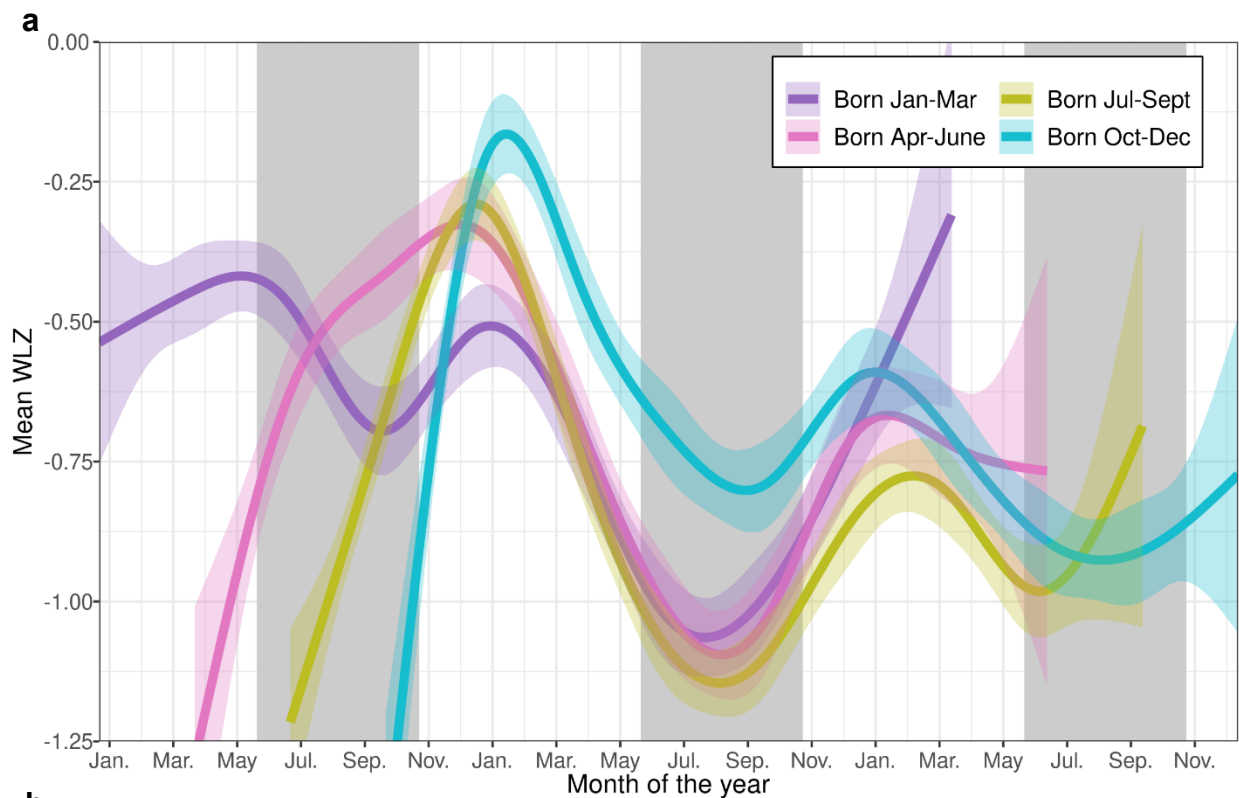
955 (b) Prevalence of severe wasting ($WLZ < -3$) by age and region.

956 (c) Prevalence of underweight (weight-for-age Z-score < -2) by age and region.

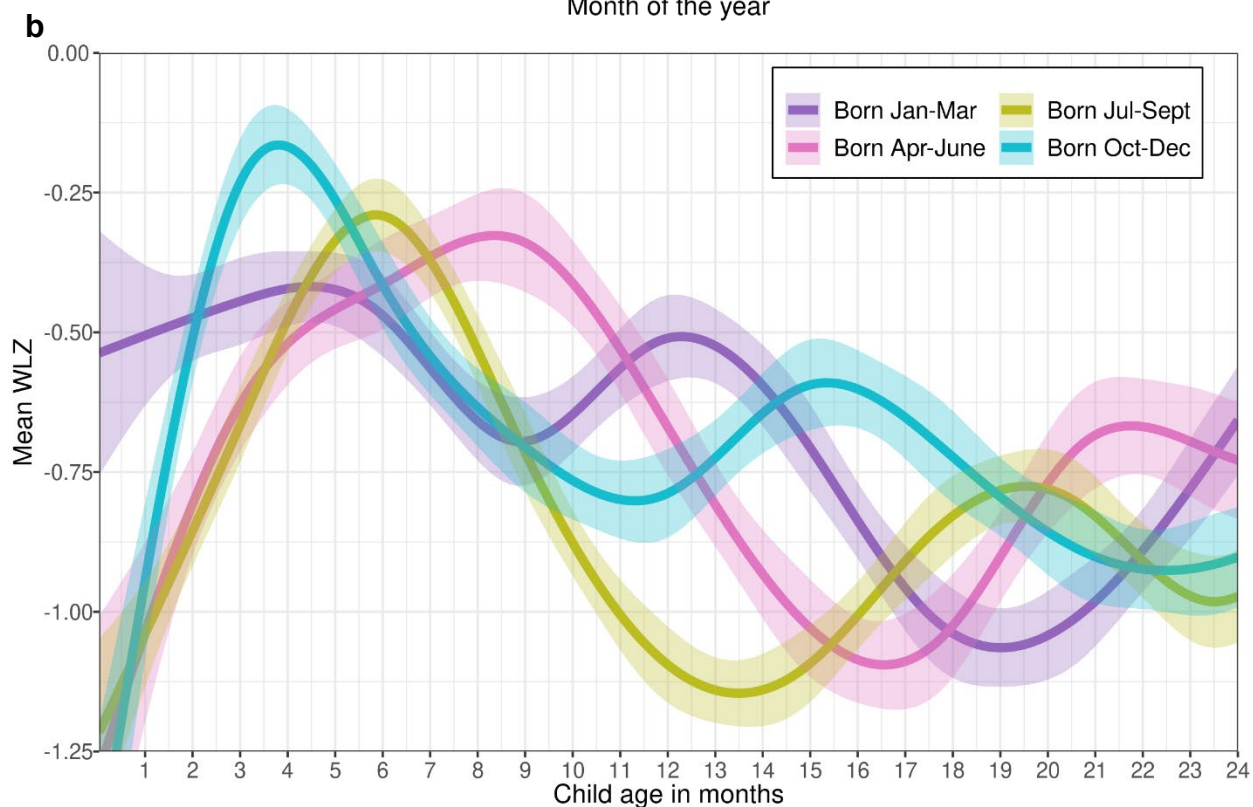
957

958

959



960



961

962

Extended Data Figure 5 | Month of birth affects seasonal patterns in WLZ

963

964

965

(a) Mean WLZ by calendar month among South Asian cohorts, with children stratified by birth month. The X-axis begins at January 1st of the year of the first January birthday in each cohort. Grey backgrounds indicate the approximate timing of seasonal monsoons in South Asia (June-September) Shaded regions

966 around spline fits indicate 95% simultaneous confidence intervals. Ten cohorts, 3,880 children, and
967 75,371 measurements were used to estimate the splines. South Asian children born in July-September
968 had the lowest mean WLZ overall and children born April-September had larger seasonal declines in
969 WLZ during their second year of life than children born October-March.

970 **(b)** Mean WLZ from birth to age 24 months among children from South Asian cohorts stratified by birth
971 month. Shaded regions around spline fits indicate 95% simultaneous confidence intervals. Data used is
972 the same as in panel (a).

973

974

975

976

977

978

979

980

981

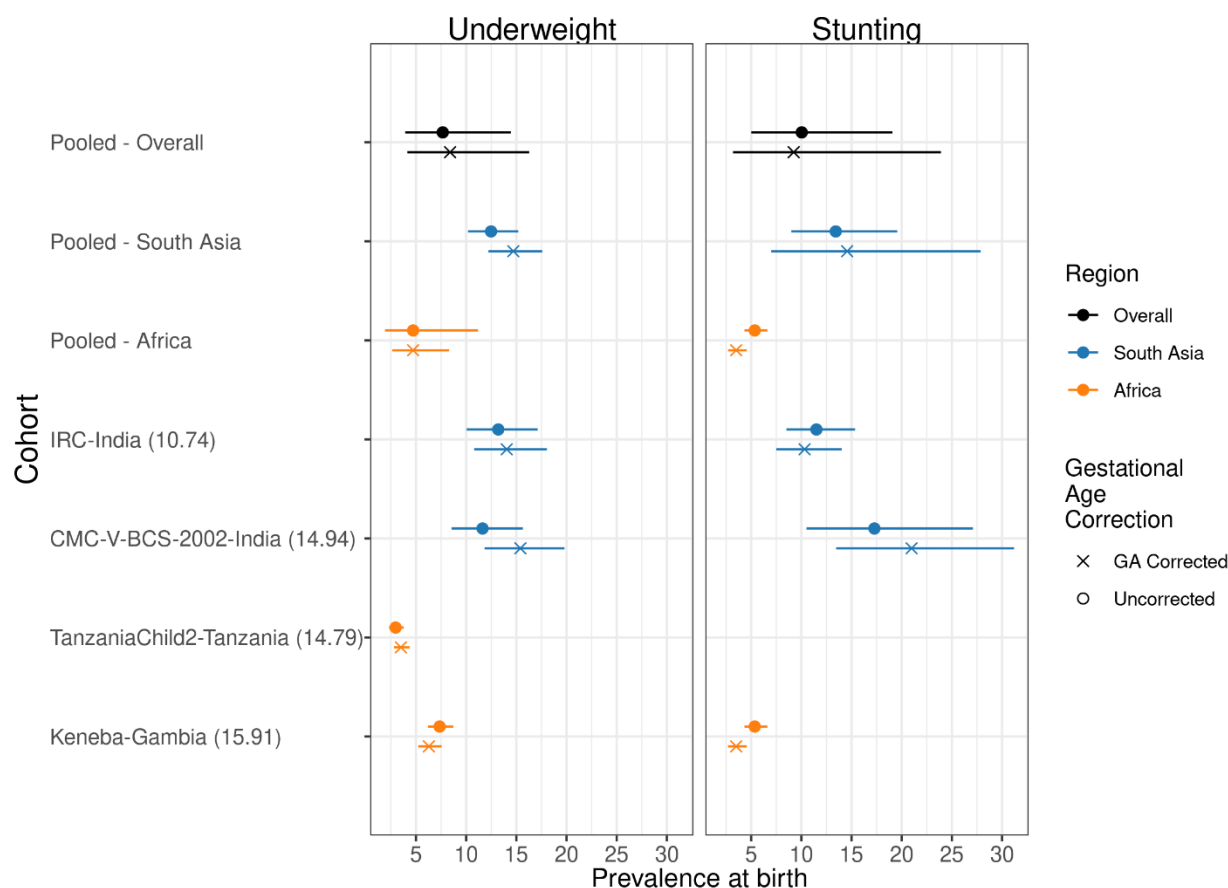
982

983

984

985

986



987
988
989
990
991
992
993
994
995
996
997
998
999
1000
1001
1002
1003
1004
1005
1006
1007
1008

Extended Data Figure 6 | Comparison of underweight and stunting prevalence at birth with and without gestational age correction

This figure includes the results from correcting at-birth Z-scores in the *ki* cohorts that measured gestational age (GA). The corrections are using the Intergrowth standards and are implemented using the R *growthstandards* package (<https://ki-tools.github.io/growthstandards/>). Overall, the prevalence at birth decreased slightly after correcting for gestational age, but the cohort-specific results are inconsistent. Observations with GA outside of the Intergrowth standards range (<168 or > 300 days) were dropped for both the corrected and uncorrected data. Prevalence increased after GA correction in some cohorts due to high rates of late-term births based on reported GA. There were no length measurements at birth in the Tanzania Child 2 cohort, so they do not have stunting estimates. There were 4,445 measurements used in the underweight analysis and 1,931 measurements used in the stunting analysis. Gestational age was estimates based on mother’s recall of the last menstrual period in the IRC, CMC-V-BCS-2002, and Tanzania Child cohorts, and was based on the Dubowitz method (newborn exam) in the MRC Keneba cohort.

1009 **Extended Data Table 1 | Summary of *ki* cohorts**

Region, Study ID	Country	Study Years	Design	Children Enrolled*	Anthropometry measurement ages (months)	Total measurements*	Primary References
South Asia							
Biomarkers for EE	Pakistan	2013-2015	Prospective cohort	380	Birth, 1, 2, ..., 18	8428	Iqbal et al 2018 Nature Scientific Reports ¹
Resp. Pathogens	Pakistan	2011 - 2014	Prospective cohort	284	Birth, 1, 2, ..., 17	3164	Ali et al 2016 Journal of Medical Virology ²
Growth Monitoring Study	Nepal	2012 - Ongoing	Prospective cohort	686	Birth, 1, 2, ..., 24	13340	Not yet published
MAL-ED	Nepal	2010 - 2014	Prospective cohort	240	Birth, 1, 2, ..., 24	5695	Shrestha et al 2014 Clin Infect Dis ³
CMC Birth Cohort, Vellore	India	2002 - 2006	Prospective cohort	373	Birth, 0.5, 1, 1.5, ..., 24	8697	Gladstone et al. 2011 NEJM ⁴
MAL-ED	India	2010 - 2012	Prospective cohort	251	Birth, 1, 2, ..., 24	5697	John et al 2014 Clin Infect Dis ⁵
Vellore Crypto Study	India	2008 - 2011	Prospective cohort	410	Birth, 1, 2, ..., 24	9729	Kattula et al. 2014 BMJ Open ⁶
CMIN	Bangladesh	1993 - 1996	Prospective Cohort	272	Birth, 3, 6, ..., 24	5372	Pathela et al 2007 Acta Paediatrica ⁷
MAL-ED	Bangladesh	2010 - 2014	Prospective cohort	263	Birth, 1, 2, ..., 24	5592	Ahmed et al 2014 Clin Infect Dis ⁸
PROVIDE RCT	Bangladesh	2011 - 2014	Individual RCT	700	Birth, 6, 10, 12, 14, 17, 18, 24, 39, 40, 52, 53 (weeks)	9202	Kirkpatrick et al 2015 Am J Trop Med Hyg ⁹
Africa							
MAL-ED	Tanzania	2009 - 2014	Prospective cohort	261	Birth, 1, 2, ..., 24	5698	Mduma et al 2014 Clin Infect Dis ¹⁰
Tanzania Child 2	Tanzania	2007 - 2011	Individual RCT	2396	1, 2, ..., 20	29518	Locks et al Am J Clin Nutr 2016 ¹¹
MAL-ED	South Africa	2009 - 2014	Prospective cohort	312	Birth, 1, 2, ..., 24	6151	Bessong et al 2014 Clin Infect Dis ¹²
MRC Keneba	Gambia	1987 - 1997	Cohort	2920	Birth, 1, 2, ..., 24	40117	Schoenbuchner et al. 2019, AJCN ¹³
Latin America							
MAL-ED	Peru	2009 - 2014	Prospective cohort	302	Birth, 1, 2, ..., 24	6127	Yori et al 2014 Clin Infect Dis ¹⁴
CONTENT	Peru	2007 - 2011	Prospective cohort	215	Birth, 1, 2, ..., 24	8339	Jaganath et al 2014 Helicobacter ¹⁵
Bovine Serum RCT	Guatemala	1997 - 1998	Individual RCT	315	Baseline, 1, 2, ..., 8	2545	Begin et al. 2008, EJCN ¹⁶
MAL-ED	Brazil	2010 - 2014	Prospective cohort	233	Birth, 1, 2, ..., 24	4838	Lima et al 2014 Clin Infect Dis ¹⁷
*Children enrolled is for children with measurements under 2 years of age. Total measurements are number of measurements of anthropometry on children under 2 years of age.							

1010
1011
1012
1013
1014
1015
1016
1017

1018 **Supplementary References**

- 1019 1. Iqbal, N. T. *et al.* Promising Biomarkers of Environmental Enteric Dysfunction: A Prospective Cohort
1020 study in Pakistani Children. *Sci. Rep.* **8**, 2966 (2018).
- 1021 2. Ali, A. *et al.* Respiratory viruses associated with severe pneumonia in children under 2 years old in a
1022 rural community in Pakistan. *J. Med. Virol.* **88**, 1882–1890 (2016).
- 1023 3. Shrestha, P. S. *et al.* Bhaktapur, Nepal: The MAL-ED Birth Cohort Study in Nepal. *Clin. Infect. Dis.*
1024 **59**, S300–S303 (2014).
- 1025 4. Gladstone, B. P. *et al.* Protective Effect of Natural Rotavirus Infection in an Indian Birth Cohort. *N.*
1026 *Engl. J. Med.* **365**, 337–346 (2011).
- 1027 5. John, S. M. *et al.* Establishment of the MAL-ED Birth Cohort Study Site in Vellore, Southern India.
1028 *Clin. Infect. Dis.* **59**, S295–S299 (2014).
- 1029 6. Kattula, D. *et al.* The first 1000 days of life: prenatal and postnatal risk factors for morbidity and
1030 growth in a birth cohort in southern India. *BMJ Open* **4**, e005404 (2014).
- 1031 7. Pathela, P. *et al.* Diarrheal illness in a cohort of children 0-2 years of age in rural Bangladesh: I.
1032 Incidence and risk factors: Risk factors for diarrhea in Bangladeshi children. *Acta Paediatr.* **95**, 430–
1033 437 (2007).
- 1034 8. Ahmed, T. *et al.* The MAL-ED Cohort Study in Mirpur, Bangladesh. *Clin. Infect. Dis.* **59**, S280–S286
1035 (2014).
- 1036 9. Kirkpatrick, B. D. *et al.* The “Performance of Rotavirus and Oral Polio Vaccines in Developing
1037 Countries” (PROVIDE) Study: Description of Methods of an Interventional Study Designed to Explore
1038 Complex Biologic Problems. *Am. J. Trop. Med. Hyg.* **92**, 744–751 (2015).
- 1039 10. Mduma, E. R. *et al.* The Etiology, Risk Factors, and Interactions of Enteric Infections and Malnutrition
1040 and the Consequences for Child Health and Development Study (MAL-ED): Description of the
1041 Tanzanian Site. *Clin. Infect. Dis.* **59**, S325–S330 (2014).
- 1042 11. Locks, L. M. *et al.* Effect of zinc and multivitamin supplementation on the growth of Tanzanian
1043 children aged 6–84 wk: a randomized, placebo-controlled, double-blind trial¹². *Am. J. Clin. Nutr.* **103**,
1044 910–918 (2016).
- 1045 12. Bessong, P. O., Nyathi, E., Mahopo, T. C. & Netshandama, V. Development of the Dzimauli
1046 Community in Vhembe District, Limpopo Province of South Africa, for the MAL-ED Cohort Study.
1047 *Clin. Infect. Dis.* **59**, S317–S324 (2014).
- 1048 13. Schoenbuchner, S. M. *et al.* The relationship between wasting and stunting: a retrospective cohort
1049 analysis of longitudinal data in Gambian children from 1976 to 2016. *Am. J. Clin. Nutr.*
1050 doi:10.1093/ajcn/nqy326.
- 1051 14. Yori, P. P. *et al.* Santa Clara de Nanay: The MAL-ED Cohort in Peru. *Clin. Infect. Dis.* **59**, S310–S316
1052 (2014).
- 1053 15. Jaganath, D. *et al.* First Detected *Helicobacter pylori* Infection in Infancy Modifies the Association
1054 Between Diarrheal Disease and Childhood Growth in Peru. *Helicobacter* **19**, 272–279 (2014).
- 1055 16. Bégin, F., Santizo, M.-C., Peerson, J. M., Torún, B. & Brown, K. H. Effects of bovine serum
1056 concentrate, with or without supplemental micronutrients, on the growth, morbidity, and micronutrient
1057 status of young children in a low-income, peri-urban Guatemalan community. *Eur. J. Clin. Nutr.* **62**,
1058 39–50 (2008).
- 1059 17. Lima, A. A. M. *et al.* Geography, Population, Demography, Socioeconomic, Anthropometry, and
1060 Environmental Status in the MAL-ED Cohort and Case-Control Study Sites in Fortaleza, Ceará,
1061 Brazil. *Clin. Infect. Dis.* **59**, S287–S294 (2014).

1062
1063
1064
1065