

An imperfect tool: COVID-19 ‘test & trace’  
success relies on minimising the impact of false  
negatives and continuation of physical  
distancing.

Emma L. Davis<sup>1,+,\*</sup>, Tim C. D. Lucas<sup>1,+</sup>, Anna Borlase<sup>1</sup>,  
Timothy M Pollington<sup>1,3</sup>, Sam Abbott<sup>2</sup>, Diepreye Ayabina<sup>1</sup>,  
Thomas Crellen<sup>1</sup>, Joel Hellewell<sup>2</sup>, Li Pi<sup>1</sup>, CMMID COVID-19  
working group<sup>6</sup>, Graham F. Medley<sup>4</sup>, T. Déirdre  
Hollingsworth<sup>1,†</sup>, and Petra Klepac<sup>2,5,†</sup>

<sup>1</sup>Big Data Institute, University of Oxford, UK.

<sup>2</sup>Department of Infectious Disease Epidemiology, London  
School of Hygiene and Tropical Medicine, UK.

<sup>3</sup>MathSys CDT, University of Warwick, UK.

<sup>4</sup>Centre for Mathematical Modelling of Infectious Disease &  
Department of Global Health and Development, London  
School of Hygiene and Tropical Medicine, London, UK.

<sup>5</sup>Department for Applied Mathematics and Theoretical  
Physics, University of Cambridge, UK.

<sup>6</sup>Full list of members in supplementary material.

\*Corresponding author: [Emma.Davis@bdi.ox.ac.uk](mailto:Emma.Davis@bdi.ox.ac.uk)

<sup>+,†</sup>Contributed equally



1

## Abstract

2 The increasingly evident role of asymptomatic and pre-symptomatic trans-  
3 mission means testing is central to COVID-19 control, but test sensitivity  
4 estimates are low (around 65%). We extend an existing branching pro-  
5 cess contact tracing model, adding diagnostic testing and refining parameter  
6 estimates. Poor test sensitivity potentially reduces the efficacy of contact  
7 tracing, due to false-negative results impacting quarantine. We show that,  
8 counter-intuitively, faster testing could also reduce operational test sensitiv-  
9 ity, exacerbating this effect. If sensitivity-based risks are mitigated, we find  
10 that contact tracing can facilitate control, but small changes in the popula-  
11 tion reproduction number (1.3 to 1.5) could impact contact tracing feasibility.

## 12 Main

13 In December 2019, SARS-CoV-2, a novel coronavirus strain, was detected  
14 in Hubei Province, China [1]. By 31st January 2020 the first UK cases of  
15 COVID-19, the disease caused by SARS-CoV-2, were confirmed [2]. Ini-  
16 tial modelling studies indicated that fast and effective contact tracing could  
17 contain the UK outbreak in most settings [3, 4]. However, by 20th March  
18 there were almost 4,000 confirmed cases nationwide [5], at which point the  
19 UK Government halted national contact tracing and scaled up physical dis-  
20 tancing measures, including the closure of schools and social venues, ex-  
21 tending to heightened restrictions on non-essential travel, outdoor activities  
22 and between-household social mixing [6]. Similar patterns occurred in other  
23 countries [7, 8].

24 By early May 2020 these measures were estimated to have reduced the  
25 effective reproduction number,  $R$ , from 2.6 to 0.62 [9, 10] and so from 12th–  
26 13th May in England some limitations on outdoor exercise were lifted and  
27 workers encouraged to return to work if they could maintain physical dis-  
28 tancing [11].

29 Capacity for diagnostic testing in the UK, as in other countries, has been  
30 escalated over recent months, with capacity reaching over 300,000 tests a day  
31 by the end of June (<https://coronavirus.data.gov.uk/testing>). Cur-  
32 rently, testing of asymptomatic individuals is limited to staff and patients  
33 in NHS and social care facilities [12], but on the 28th of May the UK Gov-  
34 ernment rolled out the initial stages of their ‘Test & Trace’ contact tracing  
35 programme to the general population, which aims to follow chains of trans-  
36 mission and use isolation to prevent onward spread. Since the beginning of  
37 ‘Test & Trace’ over 3 million people were tested by the end of July, just under  
38 50,000 of which were positive [13].

39 Crucially, the current strategy only tests symptomatic contacts and noti-  
40 fies individuals that they no longer need to isolate following a negative test,  
41 which comes back in 24 or 48 hours depending on type of test [13]. However,  
42 there are critical limitations to the diagnostic test, with poor sensitivity (cur-  
43 rent estimates imply close to 65% [14, 15]), especially in community-based  
44 settings, leading to high false negative rates which are exacerbated by high  
45 variability in symptom severity [15]. Infectious individuals who test falsely  
46 negative may prematurely resume their normal activities, contributing to  
47 ongoing chains of transmission: reliance on testing of contacts will always  
48 reduce the effectiveness of contact tracing, potentially substantially [16].

49 Imperfect adherence and the innate difficulties in identifying contacts will  
50 pose challenges for ‘Test & Trace’, particularly in crowded urban settings [17].  
51 Therefore, evaluating both the limitations of contact tracing and how to  
52 maximise its effectiveness could be crucial in preventing an exponential rise in  
53 cases, which might see contact tracing capacity rapidly exceeded and stricter  
54 physical distancing measures required [18].

55 As our knowledge of the transmission dynamics of SARS-CoV-2 grows,  
56 extending Hellewell et al.’s [3] UK-focused contact tracing study with new  
57 insights could inform this ‘Test & Trace’ strategy. The key conclusion of the  
58 initial study was that highly effective contact tracing would be sufficient to  
59 control an initial outbreak of COVID-19 in the UK, however substantial new  
60 evidence supports much higher pre- and asymptomatic transmission rates  
61 than had initially been considered [19, 20, 21]. The focus on rapid testing  
62 in the UK contact tracing programme also requires a detailed assessment of  
63 the associated trade-offs through mechanistic modelling of the testing pro-  
64 cess. Up-to-date modelling studies are therefore needed to investigate the  
65 feasibility of contact tracing and the conditions under which it is effective.

66 We use improved incubation period and serial interval estimates [22, 23,  
67 24], consider imperfect self-reporting and tracing rates and simulate the use  
68 of diagnostic tests for both detection and tracing of asymptomatic infection  
69 chains. We also simulate decision-making regarding quarantine procedures  
70 for traced individuals and explore the trade-offs introduced by poor test sen-  
71 sitivity, particularly when negative test results are used to advise individuals  
72 to cease self-isolation.

## 73 **Results**

### 74 **Testing**

75 By comparing the time individuals are tested after exposure in the model  
76 to temporal estimates of PCR test sensitivity [15] we see that an average of  
77 65% sensitivity is a relatively realistic expectation if testing is conducted 2 or  
78 more days post-isolation (Figure 1a). Test sensitivity is expected to peak at  
79 just over 75% 8 days post-exposure, but the majority of testing in the model  
80 occurs between 4 and 7 days post-exposure, where sensitivity estimates have  
81 more variance.

82 In the case of a 2 day testing delay, 29.3% of cases are tested before 5 days  
83 post-exposure, at which point sensitivity estimates are around 62%, and only

84 10.2% of cases are tested before 4 days post-exposure. The time-weighted  
85 average of expected test sensitivity for all cases tested in the model with a 2  
86 day delay is 68.0%. For a 4 day test delay, less than 1% of cases are tested  
87 before day 5 post-exposure, but just under 10% are tested after day 14, when  
88 test sensitivity drops to 61%.

89 However, in the case of immediate testing, 65% sensitivity could be a  
90 substantial over-estimate, with 64.5% of cases being tested before 5 days  
91 post-exposure and 48.9% before 4 days, meaning the test could be less than  
92 33% sensitive for around half of all cases tested.

93 Even if test sensitivity was constant, the timing of testing and quarantine  
94 duration has an impact on the risk of a large outbreak (at least 2,000 cases)  
95 and can undermine the positive impact of testing within a contact tracing  
96 programme. The probability of a large outbreak occurring is greater with  
97 an assumed test sensitivity of 65% compared to scenarios where no testing  
98 was carried out at all if testing is rapid and results in an immediate return  
99 to normal behaviour (Figure 1b, upper left panel). This result was observed  
100 across all contact tracing coverage rates. The deleterious effect of releasing  
101 false negative cases is mitigated by using a precautionary seven-day quaran-  
102 tine period, which reduced the risk of a large outbreak 11.7% to 3.9% for  
103  $R_S = 1.3$  with 60% contact tracing (Figure 1b).

104 A two day delay in carrying out the tests also led to a decrease in the  
105 probability of a large outbreak, from 11.7% to 6.3% for  $R_S$  of 1.3. Combining  
106 the two-day delay in testing and the seven-day precautionary quarantine  
107 reduced the risk of a large outbreak further, from 11.7% to 3.4% for  $R_S =$   
108 1.3 and 60% contact tracing.

109 In the case of instant testing and an immediate end to quarantine if the  
110 test is negative, there was a comparatively small benefit from scaling up  
111 of contact tracing coverage from 0% to 100%, implying that much of the  
112 potential positive impact of contact tracing could be lost if such an approach  
113 were taken.

114 Whilst a test with 65% sensitivity and no minimum quarantine period  
115 can reduce the benefits of contact tracing, if a test were to be 95% sensitive,  
116 this would improve the outcome compared to no testing in all scenarios.  
117 However, with a two-day test delay and seven-day precautionary quarantine  
118 a 65% sensitive test is almost as effective in reducing transmission as a 95%  
119 sensitive test due to this strategy ensuring quarantine of all cases during peak  
120 transmission periods irrespective of test result.

## 121 Case detection

122 Even with perfect contact tracing and employing good diagnostic practices  
123 (100% of contacts traced in 24 hours and a minimum quarantine period of  
124 7 days), a large proportion of cases are likely to go unobserved (Figure 2).  
125 High levels of symptomatic self-reporting to the tracing programme and im-  
126 proved test sensitivity can increase case detection: 95% sensitivity and 100%  
127 self-reporting gives an increase from 30.5% to 73.9% compared to 65% sensi-  
128 tivity and 50% self-reporting (both for  $R_S = 1.3$ ). However, this still results  
129 in 26.1% of cases being missed, hence detecting every case is essentially in-  
130 feasible.

## 131 Super-spreading events

132 Every missed case is a potential new chain of transmission and, given the high  
133 heterogeneity in the secondary case distribution, characterised by dispersion  
134 parameter  $k$ , there is a substantial risk of super-spreading events. Consid-  
135 ering a scenario with poor adherence to self-reporting guidelines and where  
136 one missed case leads to a cluster of either 5 or 100 new cases, we assume  
137 observation of the outbreak only occurs when the first case is hospitalised,  
138 after which contact tracing may be initiated (Figure 3a and b).

139 For a cluster of 5 new cases the median total unobserved outbreak size  
140 before the first case is hospitalised is 13 cases for  $R_S = 1.3$  and 16 cases for  
141  $R_S = 1.5$ , which translates to 8.0% and 36.9% probability of a large outbreak  
142 respectively if 60% contact tracing can be implemented (Figure 3c). For a  
143 cluster of 100 new cases the median is 219 for  $R_S = 1.3$  and 238 for  $R_S = 1.5$ ,  
144 translating to 36.3% and 84.9% probability of a large outbreak with 60%  
145 contact tracing. This emphasises the importance of maintaining physical  
146 distancing measures that restrict the attendance of indoor social gatherings  
147 to avoid super-spreading events which could rapidly escalate.

## 148 Additional observations

149 More generally, the probability of a large outbreak given the current outbreak  
150 size (Figure 3c) could be used to assess at what point during an epidemic  
151 contact tracing would be unable to control transmission, as well as to inform  
152 targets for coverage and speed. In our model both the time taken to trace  
153 contacts and the proportion of contacts traced had effects on the risk of a  
154 large outbreak, although increasing tracing speed may have the counter-effect

155 of reducing average test sensitivity due to impact on test timing with respect  
156 to exposure.

157 We also found that higher contact tracing coverage results in a lower  
158 overall number of individuals which are traced, tested and quarantined, due  
159 to the lower outbreak size. This means that achieving greater efficacy in  
160 tracing will ultimately require fewer resources. However, these resources are  
161 likely to be needed in a more condensed period of time.

## 162 **Conclusions**

163 Our results show that with a test sensitivity of 65%, fast testing which rec-  
164ommends infected but false-negative individuals to cease quarantine could be  
165 counter-productive, undermining contact tracing efforts, and may be worse  
166 than not testing. However the impact of low test sensitivity could be miti-  
167gated by applying a minimum quarantine period to all traced contacts and  
168 using positive tests to prompt further contact tracing. This would allow  
169 negative individuals to leave quarantine comparatively early, but not imme-  
170diately upon receipt of test result. Simply slowing down the decision-making  
171 process, so any false negative tests occur later in the infectious period, will  
172 also reduce the amount of transmission caused by premature cessation of  
173 quarantine and potentially increase likelihood of a more accurate test re-  
174sult [15]. Control policies in some countries are being designed to account  
175 for the high proportion of false negative individuals: for instance Greece  
176 requires negative-testing international arrivals to self-quarantine for seven  
177 days [25]; in Singapore two negative tests 24 hours apart are required to  
178 release from quarantine [26].

179 We show that even a test with low (65%) sensitivity can improve contact  
180 tracing outcomes if the impact of false negative cases can be limited by  
181 employing appropriate precautionary measures. This effect is seen because  
182 testing can bridge asymptomatic links in transmission chains that would  
183 otherwise have been missed, although there is some uncertainty surrounding  
184 the infectiousness of asymptomatic individuals [23]. Nonetheless, this benefit  
185 is only possible, provided testing is applied to all contacts, not just those  
186 displaying symptoms as was the initial UK policy.

187 Testing asymptomatic contacts would require more testing and resources,  
188 as well as potentially testing individuals earlier in their infectious period,  
189 before symptom onset. Earlier testing increases the impact of immediate  
190 quarantine cessation for false negative cases, so this would require a minimum



191 quarantine period. Despite these considerations, if very good contact tracing  
192 can be implemented from the beginning of the outbreak then fewer total  
193 resources will be required because of a smaller final outbreak size, meaning  
194 the key factor for feasibility will be time-limited resource access.

195 We demonstrated that small increases in the reproduction number un-  
196 der physical distancing measures,  $R_S$ , has a large impact on the feasibility  
197 of contact tracing. We only consider values of  $R_S$  up to 1.5, which is still  
198 substantially lower than estimates of  $R_0$  in the absence of any interventions  
199 ( $R_0 \approx 2.7$  [27]), but may be achievable with partial interventions. Our esti-  
200 mates of  $R_S$  reflect a decrease in social contacts of almost 50% but even 60%  
201 coverage and a one day trace time is insufficient to negate the risk of a large  
202 outbreak. This reiterates that physical distancing is still critical, even with  
203 highly effective contact tracing, and that contact tracing will likely be insuf-  
204 ficient to allow a complete return to normal life without additional measures,  
205 such as an effective vaccine.

206 In addition to general physical distancing, the risk posed by a single large  
207 super-spreading event means that relaxing restrictions on large gatherings,  
208 particularly indoors, could lead to a rise in case numbers, especially in com-  
209 munities where self-reporting rates are expected to be poor. Even with very  
210 low  $R_S = 1.1$ , a local cluster of 100 unobserved cases could approximately  
211 double in size before being detected.

212 However, we found that the risk of a large outbreak ( $\geq 2,000$  cases) was  
213 relatively low for  $R_S = 1.1$  no matter what the contact tracing and testing  
214 strategy. What is of note to national governments who are exiting extreme  
215 social distancing is that a dramatic change in the dynamics occurs in the  
216 small absolute increase of  $R_S$  to 1.3. At  $R_S = 1.1$  with a poorly resourced  
217 or ineffective contact tracing system the probability of a large outbreak is  
218 roughly 1%. However when  $R_S \geq 1.3$  then an ineffective contact tracing  
219 system becomes noticeable, at which stage it is too late to act.

220 A number of our assumptions may cause our results to appear unduly  
221 optimistic. For example, we model a scenario with very low initial case num-  
222 bers and assume that tracing can be initiated before test results are received,  
223 and that contacts of up to 3 days pre-onset are traced. This means there  
224 is potentially an increased requirement for maintaining physical distancing  
225 measures, even if contact tracing is deployed at high coverage nationwide.

226 We also consider the test to have a fixed sensitivity over the course of  
227 infection, whereas previous studies show that testing too early or late after  
228 exposure can dramatically increase false negative rates [15]. However, these

229 temporal estimates ignore variation in the incubation period, assuming a  
230 fixed onset time of 5 days. Additionally, high between-person variance has  
231 been observed in the natural history of infection [23]. It is therefore unclear  
232 what is driving these temporal changes in sensitivity or whether this temporal  
233 profile makes sense on an individual basis.

234 Furthermore there were worrying trends in adherence to movement re-  
235 strictions towards the end of “lockdown”, suggesting that recommended quar-  
236 antine through the ‘Test & Trace’ programme may also be affected; an un-  
237 published study of 90,000 adults across the UK in the two weeks up to 25th  
238 May found that lockdown adherence may have dropped to 50% [28]. Our as-  
239 sumption of 90% untraced symptomatic individuals self-isolating is therefore  
240 at the upper end of realistic, although symptomatic individuals will perhaps  
241 be more cautious or less mobile due to the burden of symptoms. However,  
242 this could also have repercussions on assuming that contact-traced individu-  
243 als will self-isolate when asked to do so, particularly if asymptomatic.

244 Modelling studies in other countries have proposed combinations of con-  
245 tact tracing and population-level mitigation strategies [29] and a recent UK  
246 study puts  $R_S$  in the range of 1–1.6 for a combination of school closures,  
247 50% reduction in social contacts and elderly shielding [10]. This covers the  
248 range of values considered in this study and demonstrates the potential level  
249 of physical distancing together with high-coverage contact tracing to keep  
250 the effective reproduction number below one.

251 We also assume the Negative Binomial dispersion,  $k$ , of secondary cases,  
252 does not vary with  $R_S$  due to different social distancing measures. This  
253 relationship is poorly characterised, but it is believed that social distancing  
254 may increase  $k$ , leading to decreased heterogeneity in number of contacts,  
255 potentially making outbreak control harder, although this effect is expected  
256 to be at least cancelled out by the reduction in the mean [30]. Furthermore  
257 it is also possible that less heterogeneity in contacts may make tracing of  
258 individual contacts more feasible, allowing for a higher coverage.

259 Contact tracing improvements include *secondary contact tracing* as seen  
260 in Vietnam, i.e. tracing the contacts of contacts of known cases, to get ahead  
261 of the chain of transmission [31]. The use of a digital tracing app across  
262 the UK if combined with manual tracing could boost tracing coverage [32]  
263 and interactive dashboards are being rolled out across a number of countries  
264 to inform modelling efforts and raise public awareness [33]. Backwards con-  
265 tact tracing, whilst highly labour intensive, could also fill vital gaps where  
266 transmission links have been missed [34]. As experience in contact tracing

267 develops, it will also likely be possible to give contacts a prior probability of  
268 infection (based on the duration and contact setting for example) and com-  
269 bine this with the test results to give a more accurate measure by which to  
270 determine isolation requirements.

271 Overall, we conclude that contact tracing could bring substantial benefits  
272 to controlling and preventing outbreaks, with tracing coverage and speed  
273 playing an important role, as well as testing. However, any ‘test & trace’  
274 strategy must carefully consider the limitation of poor test sensitivity, as well  
275 as the additional tracing information obtained from testing asymptomatic  
276 individuals. Poorly sensitive tests are inappropriate for ruling out a diagnosis,  
277 and infectious individuals immediately halting quarantine following a false  
278 negative result could have dangerous implications. In line with previous  
279 studies [8], we have demonstrated that contact tracing alone is highly unlikely  
280 to prevent large outbreaks unless used in combination with evidence-based  
281 physical distancing measures, including restrictions on large gatherings.

## 282 **Methods**

283 In this extension of a previous COVID-19 branching process model [3], the  
284 number of potential secondary cases generated by an index case is drawn  
285 from a Negative Binomial. The exposure time for each case, relative to in-  
286 fector onset, is drawn from a shifted Gamma distribution that allows for  
287 pre-symptomatic transmission and is left-truncated to ensure secondary case  
288 exposure time is after the primary case exposure time. Secondary cases are  
289 averted if the primary case is classified as ‘quarantined’ at the time of infec-  
290 tion, assuming within household segregation is possible. The probability of  
291 quarantine depends on whether the primary case was traced, any test result,  
292 and adherence to self-isolation recommendations (Figure 4). Each simulation  
293 was seeded with five infected individuals that are initially undetected by the  
294 contact tracing system.

### 295 **Secondary case distribution**

296 A standard Negative Binomial assumption was used to represent hetero-  
297 geneity in onward transmission due to factors such as individual contact  
298 patterns or infectiousness, with the mean relating to the *effective repro-*  
299 *duction number under physical distancing*  $R_S$  which takes a value of 1.1,  
300 1.3 or 1.5 with a constant dispersion parameter  $k = 0.16$ , as used in the

301 original analysis [30, 3]. The estimates of  $k$  for SARS-COV-2 are wide-  
302 ranging, from  $k = 0.1$  (*range* : 0.05 – 0.2) for pre-lockdown UK [34] to  
303  $k = 0.25$  (*range* : 0.13 – 0.88) for Tianjin, China during lockdown mea-  
304 sures [35]. Due to the variation in the literature we have not updated this  
305 parameter as 0.16 lies within these ranges and it is not yet possible to derive  
306 accurate national estimates of  $k$  for post-lockdown scenarios. Here a smaller  
307  $k$  represents greater heterogeneity in transmission and results in the majority  
308 of index cases leading to no secondary infections, while a small proportion of  
309 individuals infect a large number of secondary cases. All parameter estimates  
310 and references can be found in Table 1.

### 311 **Generation interval**

312 The incubation period (time from exposure to symptoms) is assumed to fol-  
313 low a Lognormal distribution with mean 1.43 and standard deviation 0.66  
314 on the log scale [22]. Each new case is then infected at an exposure time  
315 drawn from a Gamma-distributed infectivity profile (shape = 17.77, rate =  
316  $1.39 \text{ day}^{-1}$ , shift = 12.98 days) relative to their infector’s symptom onset.  
317 If this time is before the infector’s exposure then this value is rejected and  
318 re-sampled to prevent negative generation intervals. This Gamma distribu-  
319 tion has been fitted under these sampling assumptions to serial interval data  
320 published by He et al. [23] using the `fitdistr` package in R and our resulting  
321 distributions qualitatively match those presented in the original paper (Fig-  
322 ure 5). The exposure time is then compared to the isolation times of the  
323 infector and cases are averted if the infector is in isolation when the infection  
324 event would have happened. For non-averted cases, symptom onset times are  
325 then drawn from the Lognormal incubation period distribution and the prob-  
326 ability of a case remaining asymptomatic throughout their infected period is  
327 fixed at 40% [19, 20].

### 328 **Contact tracing**

329 New cases are identified either through tracing contacts of known cases or  
330 symptomatic individuals self-reporting to the system, which we model as a  
331 two-stage process. Firstly, if an individual is symptomatic (i.e. has a fever  
332 and/or dry persistent cough) but untraced we assume that a combination of  
333 reduced social activity due to illness, and awareness of COVID-19 preven-  
334 tion measures, results in a 90% chance of self-isolation one day after symptom

335 onset. Secondly, individuals who self-isolate in this way then have a proba-  
336 bility of contacting the tracing programme and reporting their symptoms as  
337 a potential case, which can be varied in the model.

338 The assumption of 90% self-isolation relies on high levels of public aware-  
339 ness and draws on evidence from COVID-19 studies in the United States  
340 and Israel that suggest 87.3% to 94% of individuals may isolate if they had  
341 COVID-19 symptoms [36, 37]. These figures are supported by a US-based  
342 2013 study that reports 72% of respondents would stay at home if they had  
343 flu-like symptoms, provisional on access to sick pay [38], without the ad-  
344 ditional factor of social responsibility introduced by pandemic awareness.  
345 However, it is important to note that this figure may still be optimistic, with  
346 one study reporting 62.2% of Japanese citizens surveyed went to work within  
347 seven days of onset of symptoms [39] and another that 75.1% of individuals  
348 living in a UK households with COVID-19 symptoms admit to leaving the  
349 house in the last 24 hours [40].

350 Contact tracing is initiated where an existing case has been identified  
351 and isolated. The contacts of that individual are then traced with 40%–  
352 100% coverage. If a contact is successfully traced they will always isolate.  
353 The time taken to trace and isolate a contact is either one day or drawn from  
354 a Uniform distribution of 1–4 days. In the absence of testing, traced contacts  
355 are assumed to isolate until non-infectious—approximately 14 days [23]. Any  
356 contacts that show symptoms or test positive will have their contacts traced;  
357 this continues until no further cases result in transmission chain extinction.

## 358 **Testing**

359 In simulations that include testing, we assume test sensitivities of 65% or  
360 95% with the lower value representing true sensitivity observed in healthcare  
361 settings [14, 15] and the higher value being closer to measurements in con-  
362 trolled conditions [41] and also to demonstrate utility of an alternative testing  
363 protocol with higher sensitivity. Due to the nature of the branching process  
364 model, only infected individuals are modelled so the impact of test specificity  
365 cannot be assessed under these methods, although the implications would be  
366 related to programme feasibility rather than efficacy. Current specificity es-  
367 timates are believed to be reasonably high in comparison [42, 16, 43], with  
368 some estimates of close to 100%, but false positive tests could lead to unnec-  
369 essary negative socioeconomic impact under any scheme requiring quarantine  
370 of healthy individuals.

371 When testing is included in the model, all individuals that either self-  
372 report to the contact tracing system (individual A in Figure 4), or are traced  
373 contacts (B & D in Figure 4), are tested. From the moment a contact self-  
374 reports or is traced, either a zero- or two-day delay is simulated before the  
375 test result is returned, chosen to be representative of UK programme tar-  
376 gets. If a positive test is returned, the individual’s contacts are traced. If a  
377 negative test is returned, two different scenarios are explored; either a) im-  
378 mediate departure from quarantine, or b) the individual is asked to complete  
379 a precautionary quarantine period (e.g. 7 days from beginning of isolation).  
380 Any contacts of a negative-testing case that were successfully identified prior  
381 to receiving the test result are still isolated and tested.

### 382 **No active case detection**

383 A scenario in which there is no active case detection in the community is  
384 considered whereby the only detected cases are those who are hospitalised.  
385 This is simulated by reducing the case reporting proportion to 6%, reflect-  
386 ing the hospitalisation rate in the UK [44]. Time from symptom onset to  
387 hospitalisation is drawn from an Exponential distribution with mean 5.954  
388 days (fitted to data published alongside a modelling study [44]). We then  
389 defined the undetected outbreak size as the number of cases that were ex-  
390 posed prior to the first hospitalisation, given an initial seeding of 5 index  
391 cases at  $t = 0$ . We also consider a scenario of 100 index cases to represent a  
392 mass super-spreading event, such as the large outbreaks seen in meat-packing  
393 plants across Europe [45] or an instance in the SARS outbreak where a flight  
394 attendant is thought to have infected more than 100 individuals [46].

### 395 **Simulation process**

396 Results presented are the combined output of 5,000 simulations for each  
397 parameter combination, or scenario, considered. These results are used to  
398 derive the probability of a large outbreak given a range of conditions. A  
399 *large outbreak* is considered to be 2,000 cases and each simulation is run  
400 for a maximum of 300 days. The threshold of 2,000 cases was chosen by  
401 running simulations with a maximum of 5,000 cases and noting which of the  
402 simulated epidemics that went extinct; 99% of extinction events occurred  
403 before reaching 2,000 cases. The model was written in R and the code is  
404 publicly available in an online GitHub repository (<https://github.com/>

405 `timcdlucas/ringbp`).

## Acknowledgments & funding sources

ELD, TCDL, AB, DA, LP, TMP, GM & TDH gratefully acknowledge funding of the NTD Modelling Consortium by the Bill & Melinda Gates Foundation (BMGF) (grant number OPP1184344). The following funding sources are acknowledged as providing funding for the named authors. This research was partly funded by the Bill & Melinda Gates Foundation (NTD Modelling Consortium OPP1184344: GM). This project has received funding from the European Union's Horizon 2020 research and innovation programme - project EpiPose (101003688: PK). Royal Society (RP/EA/180004: PK). Wellcome Trust (210758/Z/18/Z: JH, SA). Views, opinions, assumptions or any other information set out in this article should not be attributed to BMGF or any person connected with them. TC is funded by a Sir Henry Wellcome Fellowship from the Wellcome Trust (reference 215919/Z/19/Z). TMP's PhD is supported by the Engineering & Physical Sciences Research Council, Medical Research Council and University of Warwick (grant number EP/L015374/1). TMP thanks Big Data Institute for hosting him during this work. All funders had no role in the study design, collection, analysis, interpretation of data, writing of the report, or decision to submit the manuscript for publication.

## CRedit contribution statement

Conceptualisation: ELD, TCDL, PK, GFM, TDH  
Formal Analysis: ELD, TCDL  
Funding acquisition: TDH  
Investigation: ELD, TCDL, AB, TMP, LP, DA, TC  
Methodology: ELD, TCDL  
Software: ELD, TCDL, SA, JH  
Visualization: ELD, AB  
Writing – original draft: ELD, TCDL  
Writing – review & editing: All authors

## Declaration of competing interest

The authors declare that they have no known competing financial interests or personal relationships that could have appeared to influence the work reported in this paper.

## References

- [1] South China Morning Post. Coronavirus: China's first confirmed Covid-19 case traced back to November 17. [www.scmp.com/news/china/society/article/3074991/coronavirus-chinas-first-confirmed-covid-19-case-traced-back](http://www.scmp.com/news/china/society/article/3074991/coronavirus-chinas-first-confirmed-covid-19-case-traced-back) (2020). Accessed 2020-06-02.
- [2] The Guardian. Could Covid-19 have reached the UK earlier than thought? [www.theguardian.com/world/2020/jun/01/spate-of-possible-uk-coronavirus-cases-from-2019-come-to-light](http://www.theguardian.com/world/2020/jun/01/spate-of-possible-uk-coronavirus-cases-from-2019-come-to-light) (2020). Accessed 2020-06-02.
- [3] Hellewell, J. *et al.* Feasibility of controlling COVID-19 outbreaks by isolation of cases and contacts. *The Lancet Global Health* (2020).
- [4] Keeling, M. J., Hollingsworth, T. D. & Read, J. M. The efficacy of contact tracing for the containment of the 2019 novel coronavirus (COVID-19). *medRxiv* (2020).
- [5] Worldometer. Coronavirus UK summary. [www.worldometers.info/coronavirus/country/uk](http://www.worldometers.info/coronavirus/country/uk) (2020). Accessed: 2020-05-12.
- [6] GOV.UK. Coronavirus (COVID-19). [www.gov.uk/coronavirus](http://www.gov.uk/coronavirus) (2020). Accessed 2020-05-12.
- [7] Flaxman, S. *et al.* Estimating the effects of non-pharmaceutical interventions on COVID-19 in Europe. *Nature* 1–5 (2020).
- [8] Giordano, G. *et al.* Modelling the COVID-19 epidemic and implementation of population-wide interventions in Italy. *Nature Medicine* 1–6 (2020).



- [9] Jarvis, C. I. *et al.* Quantifying the impact of physical distance measures on the transmission of COVID-19 in the UK. *BMC Medicine* **18**, 1–10 (2020).
- [10] Davies, N. G. *et al.* Effects of non-pharmaceutical interventions on COVID-19 cases, deaths and demand for hospital services in the UK: a modelling study. *The Lancet Public Health* (2020).
- [11] BBC. Coronavirus: Some return to work as lockdown eases slightly in England. [www.bbc.co.uk/news/uk-52642222](http://www.bbc.co.uk/news/uk-52642222) (2020). Accessed: 2020-06-02.
- [12] UK Department of Health and Social Care. Coronavirus (COVID-19): getting tested. [www.gov.uk/guidance/coronavirus-covid-19-getting-tested](http://www.gov.uk/guidance/coronavirus-covid-19-getting-tested) (2020). Accessed: 2020-05-12.
- [13] UK Department of Health and Social Care. Weekly NHS Test and Trace bulletin, England: 23 July to 29 July 2020. Updated 10th August. (2020).
- [14] Menni, C. *et al.* Real-time tracking of self-reported symptoms to predict potential COVID-19. *Nature Medicine* 1–4 (2020).
- [15] Kucirka, L. M., Lauer, S. A., Laeyendecker, O., Boon, D. & Lessler, J. Variation in false-negative rate of reverse transcriptase polymerase chain reaction-based SARS-CoV-2 tests by time since exposure. *Annals of Internal Medicine* (2020).
- [16] Zitek, T. The appropriate use of testing for COVID-19. *Western Journal of Emergency Medicine* **21**, 470 (2020).
- [17] Ferretti, L. *et al.* Quantifying SARS-CoV-2 transmission suggests epidemic control with digital contact tracing. *Science* **368** (2020).
- [18] Anderson, R. M., Heesterbeek, H., Klinkenberg, D. & Hollingsworth, T. D. How will country-based mitigation measures influence the course of the COVID-19 epidemic? *The Lancet* **395**, 931–934 (2020).
- [19] Mizumoto, K., Kagaya, K., Zarebski, A. & Chowell, G. Estimating the asymptomatic proportion of coronavirus disease 2019 (COVID-19) cases on board the Diamond Princess cruise ship, Yokohama, Japan, 2020. *Eurosurveillance* **25**, 2000180 (2020).

- [20] Lavezzo, E. *et al.* Suppression of a SARS-CoV-2 outbreak in the Italian municipality of Vo. *Nature*, 1–5 (2020).
- [21] Emery, J. C. *et al.* The contribution of asymptomatic SARS-CoV-2 infections to transmission - a model-based analysis of the Diamond Princess outbreak. *medRxiv* (2020).
- [22] Li, Q. *et al.* Early transmission dynamics in Wuhan, China, of novel coronavirus-infected pneumonia. *New England Journal of Medicine* (2020).
- [23] He, X. *et al.* Temporal dynamics in viral shedding and transmissibility of COVID-19. *Nature Medicine* 1–4 (2020).
- [24] Ganyani, T. *et al.* Estimating the generation interval for coronavirus disease (COVID-19) based on symptom onset data, March 2020. *Euro-surveillance* **25**, 2000257 (2020).
- [25] The Guardian. Greece to resume flights from UK on 15 June with strict rules. [www.theguardian.com/world/2020/may/31/greece-to-resume-flights-from-uk-on-15-june-with-strict-rules](http://www.theguardian.com/world/2020/may/31/greece-to-resume-flights-from-uk-on-15-june-with-strict-rules) (2020). Accessed: 2020-06-01.
- [26] The Straits Times. Coronavirus: Why a double negative test is needed before discharge. [www.gov.uk/coronavirus](http://www.gov.uk/coronavirus) (2020). Accessed: 2020-06-03.
- [27] Imai, N. *et al.* Report 3: Transmissibility of 2019-nCoV. Tech. Rep., Imperial College London, UK (2020).
- [28] UCL. Just over half of adults strictly sticking to lockdown guidelines as confidence in government falls. [www.ucl.ac.uk/news/2020/may/just-over-half-adults-strictly-sticking-lockdown-guidelines-confidence-government-falls](http://www.ucl.ac.uk/news/2020/may/just-over-half-adults-strictly-sticking-lockdown-guidelines-confidence-government-falls) (2020). Accessed: 2020-05-31.
- [29] Koo, J. R. *et al.* Interventions to mitigate early spread of SARS-CoV-2 in Singapore: a modelling study. *The Lancet Infectious Diseases* (2020).
- [30] Lloyd-Smith, J. O., Schreiber, S. J., Kopp, P. E. & Getz, W. M. Super-spreading and the effect of individual variation on disease emergence. *Nature* **438**, 355–359 (2005).

- [31] Le, S. M. Containing the coronavirus (COVID-19): Lessons from Vietnam. <https://blogs.worldbank.org/health/containing-coronavirus-covid-19-lessons-vietnam>. (2020). Accessed: 2020-06-03.
- [32] BBC News. Coronavirus: NHS virus-tracing app downloaded 55,000 times. [www.bbc.co.uk/news/uk-england-hampshire-52617236](http://www.bbc.co.uk/news/uk-england-hampshire-52617236) (2020). Accessed: 2020-06-03.
- [33] Dong, E., Du, H. & Gardner, L. An interactive web-based dashboard to track COVID-19 in real time. *The Lancet Infectious Diseases* **20**, 533–534 (2020).
- [34] Endo, A., Abbott, S., Kucharski, A. J., Funk, S. *et al.* Estimating the overdispersion in COVID-19 transmission using outbreak sizes outside China. *Wellcome Open Research* **5**, 67 (2020).
- [35] Zhang, Y., Li, Y., Wang, L., Li, M. & Zhou, X. Evaluating transmission heterogeneity and super-spreading event of COVID-19 in a metropolis of China. *International Journal of Environmental Research and Public Health* **3705** (2020).
- [36] Heffner, J., Vives, M.-L. & FeldmanHall, O. Emotional responses to prosocial messages increase willingness to self-isolate during the COVID-19 pandemic. *PsyArXiv* (2020).
- [37] Bodas, M. & Peleg, K. Self-isolation compliance in the COVID-19 era influenced by compensation: Findings from a recent survey in Israel. *Health Affairs* **39**, 936–941 (2020).
- [38] Kumar, S., Grefenstette, J. J., Galloway, D., Albert, S. M. & Burke, D. S. Policies to reduce influenza in the workplace: impact assessments using an agent-based model. *American Journal of Public Health* **103**, 1406–1411 (2013).
- [39] Machida, M. *et al.* The actual implementation status of self-isolation among Japanese workers during the COVID-19 outbreak. *Tropical Medicine and Health* **48**, 1–8 (2020).

- [40] Smith, L. E. *et al.* Factors associated with adherence to self-isolation and lockdown measures in the UK; a cross-sectional survey. medRxiv (2020).
- [41] van Kasteren, P. *et al.* Comparison of seven commercial RT-PCR diagnostic kits for COVID-19. *Journal of Clinical Virology* **128** (2020).
- [42] Nalla, A. K. *et al.* Comparative performance of SARS-CoV-2 detection assays using seven different primer-probe sets and one assay kit. *Journal of Clinical Microbiology* **58** (2020).
- [43] Grassly, N. *et al.* Report 16: Role of testing in COVID-19 control. Imperial College London (2020).
- [44] Verity, R. *et al.* Estimates of the severity of coronavirus disease 2019: a model-based analysis. *The Lancet Infectious Diseases* 669–677, DOI: 10.1016/S1473-3099(20)30243-7 (2020).
- [45] Middleton, J., Reintjes, R. & Lopes, H. Meat plants - a new front line in the COVID-19 pandemic (2020).
- [46] Gopinath, S., Lichtman, J. S., Bouley, D. M., Elias, J. E. & Monack, D. M. Role of disease-associated tolerance in infectious superspreaders. *Proceedings of the National Academy of Sciences* **111**, 15780–15785 (2014).

Parameter	Values	Refs
Number of initial cases	5, 100	range
Effective reproduction number under physical distancing, $R_S$	1.1, 1.3, 1.5	range
Dispersion of $R_S$ , $k$	0.16	[30, 3]
Proportion asymptomatic	40%	[19, 20]
Delay: onset to isolation	1 day	
Incubation period (Lognormal)	mean log: 1.43	[22, 23]
Incubation period (Lognormal)	sd log: 0.66	[22, 23]
Infection time (Gamma)	shape: 17.77	[23]
Infection time (Gamma)	rate: 1.39 day <sup>-1</sup>	[23]
Infection time shift	-13.0 days	[23]
Untraced self-isolation prob.	90%	[36, 37, 38]
Self-reporting probability	0.5–1.0	range
Contact tracing coverage	0–100%	range
Min time to trace contacts	1 day	
Max time to trace contacts	1–4 days	range
Test sensitivity	65%, 95%	[15, 14, 41]
Delay: isolate to test result	0–2 days	range
Isolation duration if -ve test	0–7 days	range
Proportion cases hospitalised	6%	[44]
Onset to hospitalisation (Exp)	mean: 5.95 days	[44]

Table 1: Model parameters values/ranges. Parameters taken from the literature are fixed and for other parameters a range of values are explored.

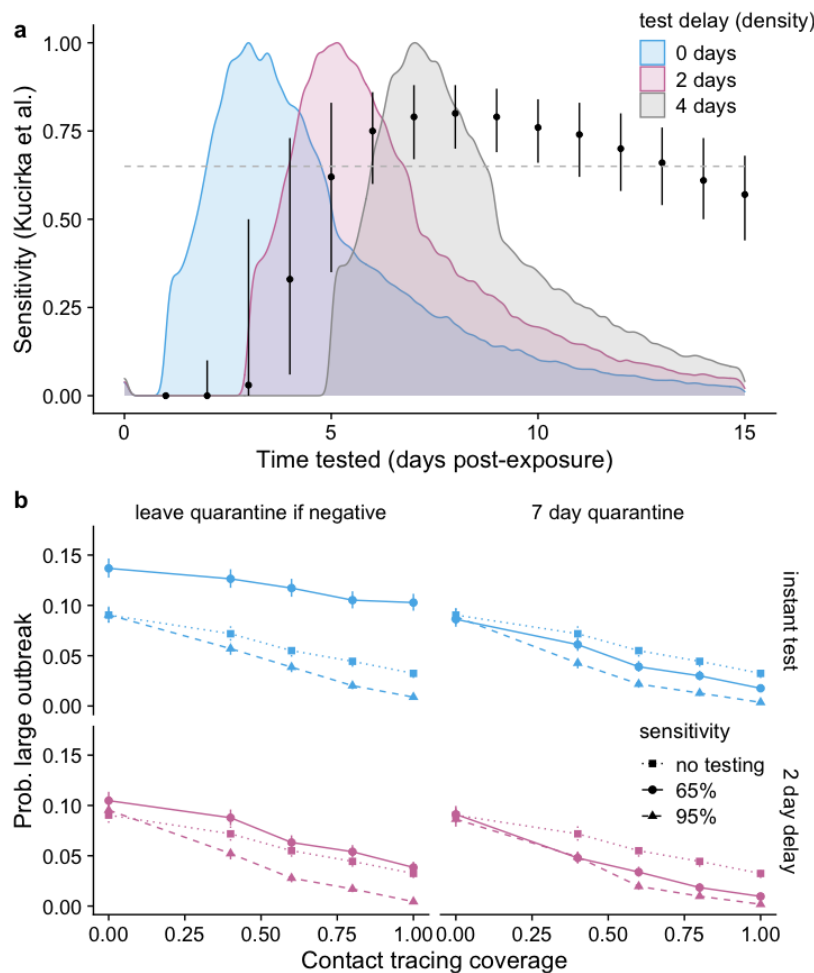


Figure 1: **Test sensitivity and mitigation.** **a)** Normalised density distributions of time cases are tested in our model, measured in days post-exposure, for an immediate test upon identification (blue), a 2 day delay to testing (pink) and a 4 day delay (grey) for  $R_S = 1.3$ . Black data points are temporal sensitivity estimates from Kuchirka et al. [15]. Grey dashed line represents 65% sensitivity (as assumed in the model). **b)** Comparing effectiveness of test-and-release of negative-testing cases (left-hand panels) with a minimum seven-day quarantine period (right-hand panels). Assuming 65% sensitivity; 50% self-reporting; 1 day trace delay. Error bars: 95% confidence intervals from simulation output variation.

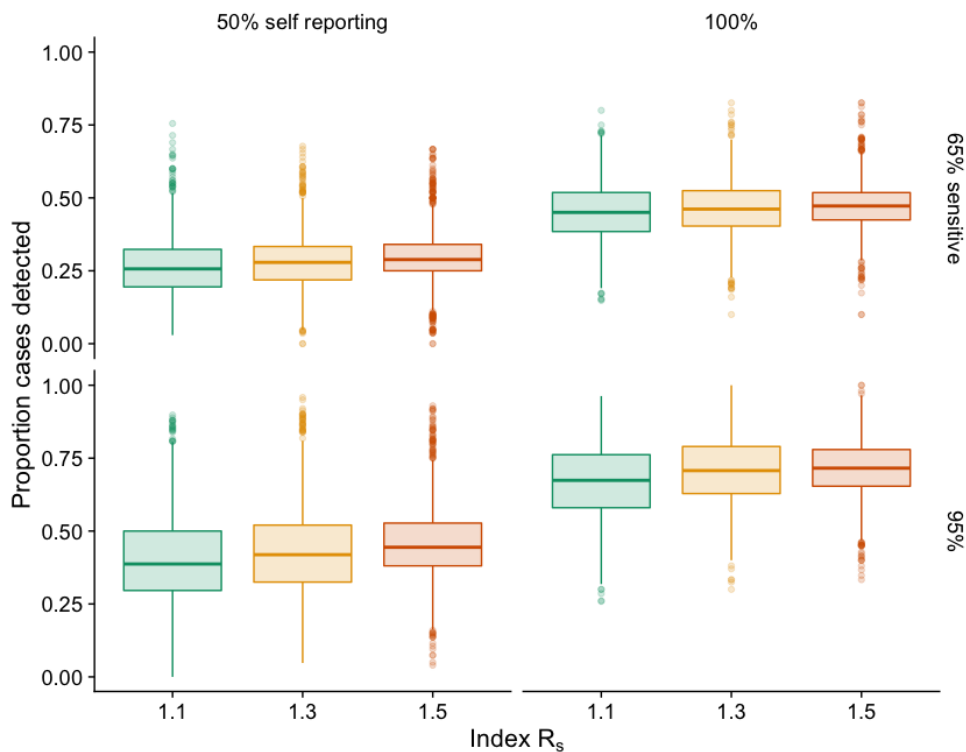


Figure 2: **Case detection.** Proportion of cases detected for varying self-reporting of symptomatic cases (50% and 100%) and diagnostic test sensitivity (65% and 95%). Effective reproduction number under physical distancing:  $R_S = 1.1, 1.3$  and  $1.5$ . Box boundaries represent lower (25%), median (50%) and upper (75%) quartiles; whiskers represent the full range of values, excluding outliers, which are marked individually.

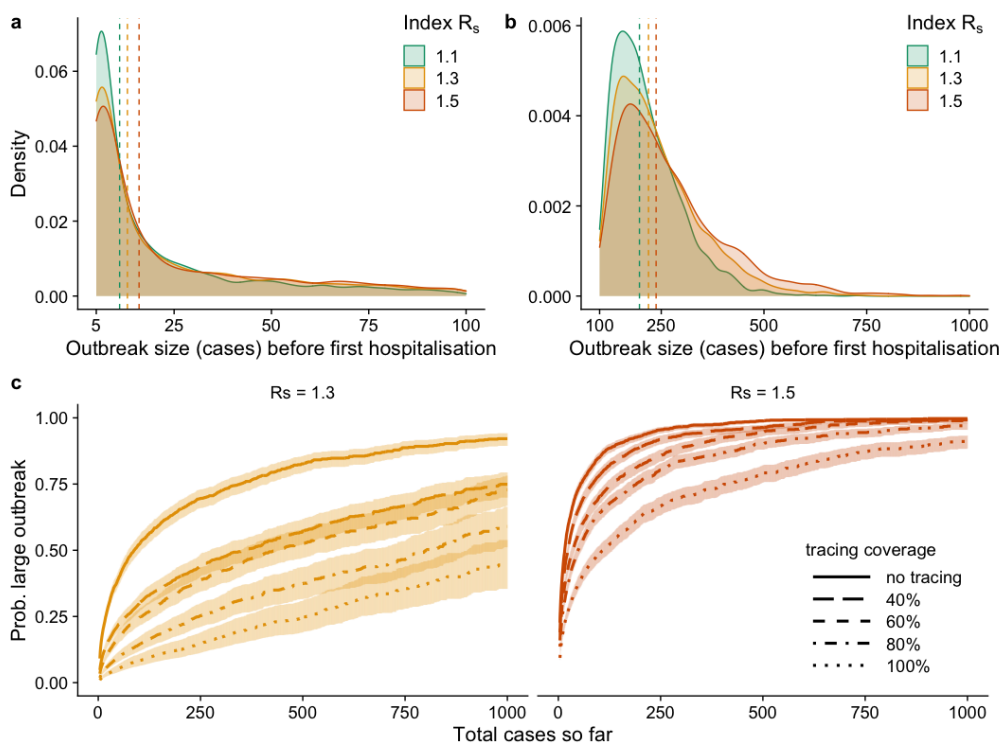


Figure 3: **Super-spreading scenarios.** **a)** Total cases occurring before first hospitalisation in a population with no active tracing or case detection from one super-spreading event (5 new cases). **b)** Same as a) but with 100 new cases. Vertical dashed lines represent median values. **c)** Probability of outbreak by total number of cases so far. Sensitivity = 65%, self-reporting proportion = 50%, individuals testing negative are isolated for a minimum of 7 days, time to test from isolation = 2 days. Error windows: 95% confidence intervals calculated from simulation output variation.



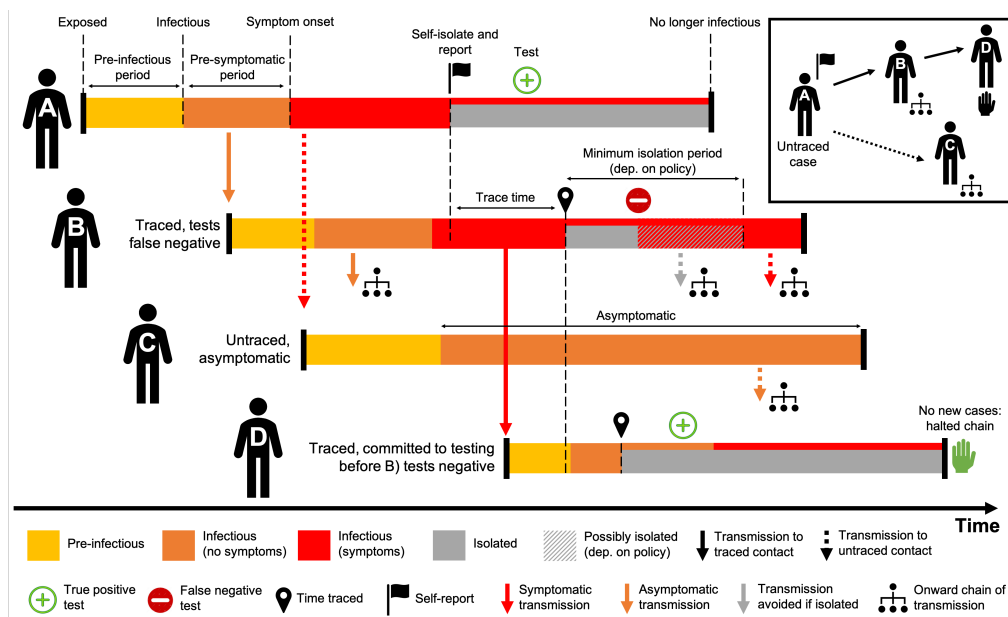


Figure 4: **Contact tracing schematic.** Overview of the contact tracing process implemented in our model. **Person A** isolates and self-reports to the contact tracing programme with some delay after symptom onset, by which time they have infected Persons B and C. When Person A self-reports contact tracing is initiated. They are then tested with positive result and remain isolated for their infectious period. **Person B** was infected by A prior to their symptom onset and is detected by tracing after some delay, after infecting Person D. After isolating they are tested, with a false negative result. This leads to B either a) stopping isolation immediately or b) finishing a minimum 7 day isolation period. Both may allow new onward transmission. **Person C** was infected by A but not traced as a contact. Person C does not develop symptoms but is infectious, leading to missed transmission. **Person D** was traced and tested before the false negative test was returned for Person B. The test for D returns positive, meaning that D remains isolated, halting this chain of transmission.

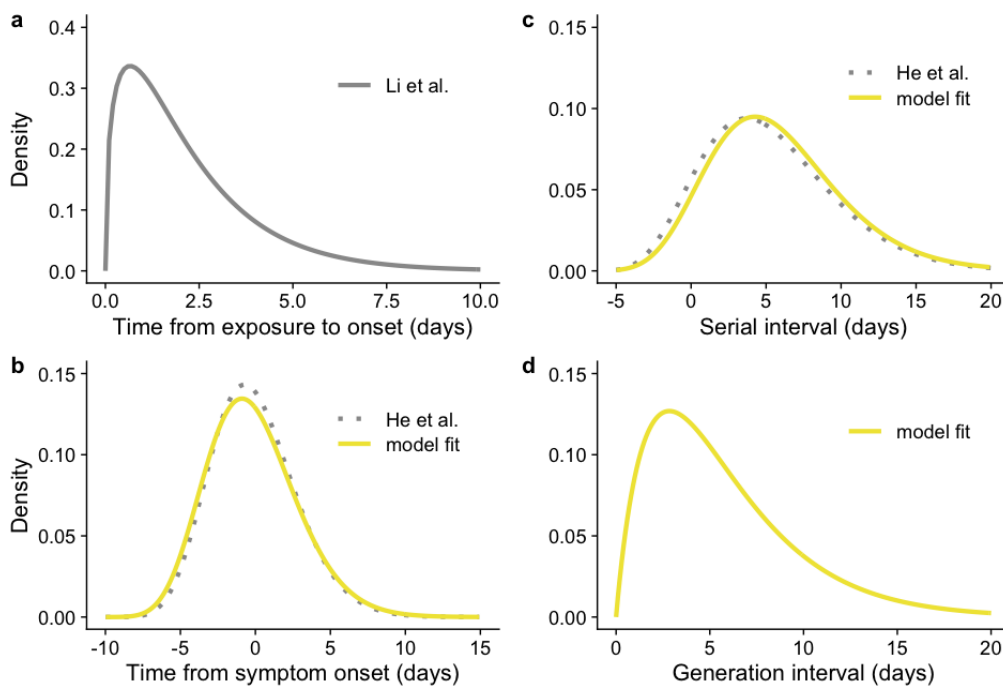


Figure 5: **Parameters' distributions.** Distributions for **a)** incubation period (exposure time to symptom onset) from Li et al. [22]; **b)** transmission profile relative to symptom onset, fitted to data and compared to He et al. [23]; **c)** serial interval, fitted and compared to He et al. [23]; and **d)** generation interval, combined distribution from a) and b) with re-sampling to prevent negative serial intervals, as described in the main text.

