

1
2
3
4
5
6
7
8
9
10
11
12
13
14
15
16
17
18
19
20
21
22

Changes in health promoting behavior during COVID-19 physical distancing: Utilizing Wearable Technology to Examine Trends in Sleep, Activity, and Cardiovascular Indicators of Health.

Emily R Capodilupo¹ and Dean J Miller²

¹ Whoop, Inc., Department of Data Science and Research, Boston, Massachusetts

² Central Queensland University, Appleton Institute for Behavioral Science, Adelaide, South

Australia

Correspondence concerning this article should be addressed to:

Dean J. Miller, Appleton Institute for Behavioral Science, Adelaide, South Australia, Australia.

Tel: +61 8378 4523. Email: d.j.miller@cqu.edu.au

23 **Abstract**

24 The COVID-19 pandemic incited unprecedented restrictions on the behavior of society. The aims
25 of this study were to quantify changes to sleep/wake behavior and exercise behavior, as well as
26 changes in physiological markers of health during COVID-19 physical distancing. A retrospective
27 analysis of 5,436 US-based subscribers to the WHOOP platform (mean age = 40.25 ± 11.33 ; 1,536
28 females, 3,900 males) was conducted covering the period from January 1st, 2020 through May
29 15th, 2020. This time period was separated into a 68-day baseline period and a 67-day physical
30 distancing period. To provide context and allow for potential confounders (e.g., change of season),
31 data were also extracted from the corresponding time periods in 2019. As compared to baseline,
32 during physical distancing, all subjects fell asleep earlier (-0.25 hours), woke up later (0.48 hours),
33 obtained more sleep (+0.35 hours) and reduced social jet lag (-0.21 hours). Contrasting sleep
34 behavior was seen in 2019, with subjects falling asleep and waking up at a similar time (-0.01
35 hours; -0.05 hours), obtaining less sleep (-0.14 hours) and maintaining social jet lag (0.01 hours)
36 in corresponding periods. Individuals exercised more intensely during physical distancing by
37 increasing the time spent in high heart rate zones. In 2020, resting heart rate decreased (-0.9 beats
38 per minute) and heart rate variability increased (+0.98 milliseconds) during physical distancing
39 when compared to baseline. However, similar changes were seen in 2019, suggesting the variation
40 may not be related to the introduction of physical distancing mandates. The findings suggest that
41 changes in societal commitments (e.g., daily commute; working from home) during physical
42 distancing may have resulted in changes to health-related behavior (i.e., increased exercise
43 intensity and longer sleep duration). As the COVID-19 pandemic eases, maintenance of certain
44 aspects of physical distancing (e.g., working from home) may allow for positive changes to
45 sleep/wake and exercise behaviors.

46 **Introduction**

47 Severe acute respiratory syndrome coronavirus 2 (SARS-CoV-2), the virus responsible for the
48 COVID-19 pandemic [1], has caused significant social and economic disruptions and has altered
49 the behavior of society. Millions of employees and business owners ceased working or shifted to
50 working from home rather than commuting into offices. Physical distancing protocols put in place
51 to reduce disease transmission also precluded previously common forms of group leisure and
52 athletic activities. Exercise and sleep are two primary behaviors that may have been impacted by
53 COVID-19 restrictions - with individuals confined to their homes and likely experiencing change
54 to work (e.g., loss of employment; reduced commuting) and at-home commitments (e.g.,
55 childcare).

56 Changes in sleep/wake behavior can have meaningful implications on health. Insufficient
57 sleep duration has been shown to correlate with impairments to cognitive performance [2], insulin
58 sensitivity [3] and diabetes [4], cardiovascular disease [5], impairments to mental health [6], and
59 reduced physical performance [7]. Increasing sleep quantity has been shown to counteract many
60 of these effects; for example, increases in sleep quantity have been shown to drive changes in
61 attention [8] and stress hormone expression [9] even within already healthy populations. Changes
62 in sleep timing and the consistency of bedtimes and wake times also have profound effects on
63 wellbeing, with benefits seen when a consistent sleep schedule is maintained [10]. These benefits
64 are understood to be related to the circadian rhythm; shifting sleep timing decouples the circadian
65 rhythm from the sleep/wake rhythm [11, 12], contributing to adverse health outcomes such as
66 higher rates of cardiovascular disease [13] and breast cancer [14].

67 Physical distancing mandates brought with them temporary closure of gyms, banning of
68 team sports, and cancelations of competitive seasons. For individuals that ordinarily exercise in

69 these public settings, the way in which they obtain their daily exercise may have changed
70 dramatically during the pandemic. Sudden changes in exercise modality, frequency and duration
71 may have a variety of effects on fitness. For example, one study showed that women who
72 participated in multiple exercise modalities had higher muscular endurance than women who
73 participated in only one athletic activity [15]. Sudden changes in the exercise modalities performed
74 by individuals may also result in changes to injury rates and [16] exercise intensity (e.g.,
75 transitioning from weight training to running). Therefore, if COVID-19 restrictions do provide
76 more opportunity for exercise, increases in exercise frequency and intensity may result in
77 beneficial cardiovascular adaptations [17]. Understanding how the distribution of time spent in
78 each heart rate zone is perhaps as important as understanding how total exercise and exercise
79 modality changed as a result of the COVID-19 pandemic. In this context, wearable technology can
80 be leveraged to provide unique insight into health related behavior and subsequent health outcomes
81 in large population cohorts.

82 The WHOOP strap (Whoop, Inc., Boston, MA, USA) is a commercially available wearable
83 device that has been third-party validated to measure sleep, resting heart rate (RHR), heart rate
84 variability (HRV), and respiratory rate [18]. Previous research has shown that metrics such as RHR
85 [19] and HRV [20] are powerful indicators of cardiovascular health. Conditions brought forth by
86 the pandemic create a natural testing ground in which to examine changes in health related
87 behavior and whether these impact cardiovascular indicators of health. The primary aim of this
88 study is to quantify the impact of physical distancing mandates on health related behaviors –
89 specifically sleep timing and duration and exercise frequency, intensity, and modality. This study
90 also explores the physical outcomes of these changes in behavior by examining markers of
91 physical health, including sleep duration, RHR, and HRV.

92 **Materials and Methods**

93 This study conducted a retrospective analysis of health-related behavior before and during
94 COVID-19 physical distancing restrictions. A total of 5,436 WHOOP members based in the United
95 States of America (mean age = 40.25 ± 11.33 ; 1,536 females, 3,900 males) were selected from the
96 WHOOP subscriber-base. Inclusion criteria were (1) having recorded sleeps for at least 120 of the
97 135 (89%) days between January 1 and March 9 in 2019 and 2020, respectively; and (2) be between
98 the ages of 18 and 80 on May 15th, 2020, when data was extracted for analysis. The study was
99 approved by the Central Queensland University Human Research Ethics Committee. Data were
100 collected with the written consent of individuals via WHOOP Inc's terms of service.

101 To examine the acute changes in health related behavior, the period between January 1,
102 2020 and March 9th, 2020 was classified as a baseline period, while the period from March 10th,
103 2020 through May 15th, 2020 was classified as a physical distancing period. While no single date
104 globally separates pre- and post-physical distancing, delineation of the data on March 9th is based
105 on the rough timeline along which most users would have been subject to some level of physical
106 distancing mandate or recommendation. During the week of March 9th, the World Health
107 Organization officially classified COVID-19 as a pandemic [21] and a National State of
108 Emergency was declared in the United States of America [22]. The May 15th physical distancing
109 end date was chosen such that the physical distancing period analyzed would end before gradual
110 easing physical distancing begins. Additionally, utilizing the chosen dates to represent physical
111 distancing resulted in similar durations of baseline and physical distancing (68 and 67 days,
112 respectively). To provide context for potential confounders (e.g., change in season), data were also
113 extracted from the corresponding dates in 2019.

114 **Data extraction**

115 The WHOOP strap (Boston, Massachusetts, USA) is a wearable device that collects continuous
116 heart rate, 3-axis accelerometer, temperature, and 3-axis gyroscope data. In combination with the
117 WHOOP mobile device app and cloud-based analytics platform, a series of algorithms evaluate
118 duration and phases of sleep, RHR and HRV. Validation of sleep and cardiovascular measures
119 gleaned from WHOOP against gold standard polysomnography support a low degree of bias and
120 low precision errors [18, 23].

121 The WHOOP strap is capable of automatically detecting exercise and can automatically
122 identify and classify 54 different modalities. Additionally, users of the WHOOP platform have the
123 ability to manually log exercise that don't meet the algorithm's criteria for automatic detection.

124 The following variables were obtained from the WHOOP platform:

- 125 ● Sleep opportunity duration: *total time dedicated to sleep each night. Measured primarily*
126 *through automatic detection in the WHOOP app. Users are alerted each morning when*
127 *their automatically detected sleep is ready for review and have the ability to edit the start*
128 *and stop times should any errors occur.*
- 129 ● Social jet lag: *the difference between sleep opportunity onset on weekends (Saturday and*
130 *Sunday) and weekdays (Monday through Friday) resulting from misalignment between*
131 *social and internal clocks [24].*
- 132 ● Sleep opportunity onset: *the time that each sleep opportunity was initiated relative to local*
133 *time zone.*
- 134 ● Sleep opportunity offset: *the time that each sleep opportunity ended relative to local time*
135 *zone*

- 136 ● Sleep duration (hours): *total amount of time spent asleep each night. Measured through*
137 *automatic detection.*
- 138 ● Exercise frequency: *daily percentage of individuals that recorded an exercise session.*
- 139 ● Exercise type - *the sport or exercise type chosen for each exercise session. Labeled*
140 *automatically by the app via a machine learning algorithm or manually by the WHOOP-*
141 *user.*
- 142 ● Exercise intensity: *percentage of exercise duration spent in each of the six heart rate zones*
143 *- Zone 1 = 0-50% heart rate reserve (HRR) ; zone 2 = 50-60% HRR, zone 3 = 60-70%*
144 *HRR, zone 4 = 70-80% HRR, zone 5 = 80-90% HRR, zone 6 = 90-100% HRR. Measured*
145 *automatically during the exercise session.*
- 146 ● Resting heart rate (beats per minute; bpm) - *the mean value of heart beats per minute*
147 *sampled during slow wave sleep. Automatically measured during slow wave sleep each*
148 *night.*
- 149 ● Heart rate variability (milliseconds; ms) - *the root-mean-square difference of successive*
150 *heartbeat intervals sampled during slow wave sleep. Automatically measured during slow*
151 *wave sleep each night.*

152 Throughout, dates are assigned to sleeps and exercise based on the local time zone's date in which
153 they end, for example, a sleep beginning in the final hours of January 1st and ending on the
154 morning of January 2nd is attributed to January 2nd.

155

156

157 **Data Analysis**

158 Independent non-parametric significance tests (Mann-Whitney U tests) were performed to
159 examine differences in sleep and health related dependent variables between control and physical
160 distancing periods in 2019 and 2020, respectively. Analyses for the 2020 time periods were also
161 conducted at the cohort-level with data grouped by age and sex. An additional analysis examining
162 changes between the 2020 control and physical distancing periods and corresponding changes in
163 2019 were also conducted. Where $p < 0.05$, Bonferroni corrections were made to reduce the chance
164 of obtaining a type 1 error. To assess the magnitude of the differences between these periods,
165 Cohen's d effect sizes and 95% confidence limits for effect size were also calculated. Effect sizes
166 were interpreted as: < 0.20 (trivial), 0.2 to 0.59 (small), 0.60 to 1.19 (moderate), 1.20 to 1.99 (large),
167 and > 2.0 (very large) [25].

168 **Results**

169 **Sleep**

170 A summary of sleep/wake behavior for age and gender cohorts are presented in Table 1. In 2020,
171 average sleep opportunity duration was significantly longer during physical distancing when
172 compared to baseline (*large effect size*). During the corresponding time periods in 2019, sleep
173 opportunity duration decreased (*small effect size*). In 2020, average sleep opportunity duration was
174 significantly longer during physical distancing when compared to baseline for 18-25 year-olds
175 (*large effect size*), 25-40 year-olds (*large effect size*), 40-55 year-olds (*moderate effect size*), 55-
176 80 year-olds (*moderate effect size*), females (*large effect size*) and males (*moderate effect size*)
177 (Table 1).

178 In 2020, average sleep opportunity onset was 15 minutes later during physical distancing
179 when compared to baseline (*moderate effect size*). Average sleep opportunity onset was 1 minute
180 earlier for the corresponding time periods in 2019 (*trivial effect size*). In 2020, average sleep
181 opportunity onset was significantly earlier during physical distancing when compared to baseline
182 for 18-25 year-olds (*large effect size*), 25-40 year-olds (*moderate effect size*), 40-55 year-olds (*very*
183 *large effect size*), 55-80 year-olds (*very large effect size*), females (*very large effect size*), and males
184 (*moderate effect size*) (Table 1). These data are presented in Fig 1.

185 In 2020, average sleep opportunity offset was significantly later during physical distancing
186 when compared to baseline (*moderate effect size*). Average sleep opportunity offset was three
187 minutes earlier for the corresponding time periods in 2019 (*trivial effect size*). In 2020, average
188 sleep opportunity offset was significantly later for 18-25 year-olds (*large effect size*), 25-40 year-
189 olds (*moderate effect size*), 40-55 year-olds (*moderate effect size*), 55-80 year-olds (*moderate*
190 *effect size*), females (*large effect size*), and males (*moderate effect size*) (Table 1). These data are
191 presented in Fig 1.

192

193 Table 1. Sleep/wake behavior as a function of time period.

Variable	Time period		Outcomes	
	Baseline (M±SD)	Physical distancing (M±SD)	Difference (PD-BL; M±SEM)	Effect size (95% CL)
Sleep opportunity duration (h)				
2019	7.70 ± 0.21	7.64 ± 0.19	-0.05 ± 0.003*	-0.30 (-0.34, -0.30)
2020	7.65 ± 0.20	7.89 ± 0.18	0.24 ± 0.003**	1.26 (1.22, 1.30)
18-25 year-olds	7.83 ± 0.16	8.14 ± 0.16	0.31 ± 0.009**	1.94 (1.77, 2.10)
25-40 year-olds	7.66 ± 0.19	7.93 ± 0.19	0.27 ± 0.004**	1.42 (1.36, 1.48)
40-55 year-olds	7.56 ± 0.25	7.78 ± 0.21	0.21 ± 0.005**	0.95 (0.89, 1.02)
55-80 year-olds	7.75 ± 0.19	7.90 ± 0.17	0.15 ± 0.007*	0.83 (0.72, 0.94)
Females	7.80 ± 0.2	8.07 ± 0.18	0.27 ± 0.005**	1.42 (1.35, 1.49)
Males	7.59 ± 0.2	7.81 ± 0.19	0.22 ± 0.003**	1.13 (1.08, 1.17)
Sleep onset time (hh:mm)				
2019	22:59 ± 0:20	22:58 ± 00:15	-00:01 ± 00:01	-0.03 (-0.07, 0.00)
2020	22:58 ± 0:19	23:13 ± 00:10	00:15 ± 00:01	1.02 (0.98, 1.06)
18-25 year-olds	23:31 ± 0:24	23:58 ± 00:13	00:26 ± 00:03**	1.58 (1.42, 1.74)
25-40 year-olds	23:04 ± 0:23	23:21 ± 00:13	00:16 ± 00:01**	1.13 (1.07, 1.18)
40-55 year-olds	22:49 ± 0:17	23:04 ± 00:09	00:14 ± 00:01**	3.47 (3.39, 3.55)
55-80 year-olds	22:37 ± 0:13	22:47 ± 00:07	00:09 ± 00:01**	3.18 (3.05, 3.31)
Females	22:46 ± 0:19	23:04 ± 00:10	00:18 ± 00:01**	3.10 (3.01, 3.18)
Males	23:03 ± 0:19	23:17 ± 00:10	00:14 ± 00:01**	1.10 (1.05, 1.14)
Sleep offset time (hh:mm)				
2019	06:43 ± 0:30	06:40 ± 00:27	-00:03 ± 00:01	-0.11 (-0.14, -0.07)
2020	06:40 ± 0:29	07:09 ± 00:21	00:29 ± 00:01**	1.15 (1.11, 1.18)
18-25 year-olds	07:24 ± 0:28	08:09 ± 00:19	00:45 ± 00:04**	1.88 (1.71, 2.05)
25-40 year-olds	06:48 ± 0:31	07:20 ± 00:23	00:32 ± 00:01**	1.17 (1.12, 1.23)
40-55 year-olds	06:26 ± 0:30	06:54 ± 00:21	00:27 ± 00:02**	1.08 (1.02, 1.15)
55-80 year-olds	06:25 ± 0:21	06:44 ± 00:15	00:18 ± 00:02**	1.04 (0.93, 1.15)
Females	06:37 ± 0:28	07:11 ± 00:21	00:34 ± 00:02**	1.37 (1.30, 1.45)
Males	06:41 ± 0:30	07:09 ± 00:21	00:27 ± 00:01**	1.08 (1.04, 1.13)

194 Notes: BL = baseline; PD = physical distancing; SEM = standard error of the mean; * = p-value

195 <0.05; ** = p-value <0.001.

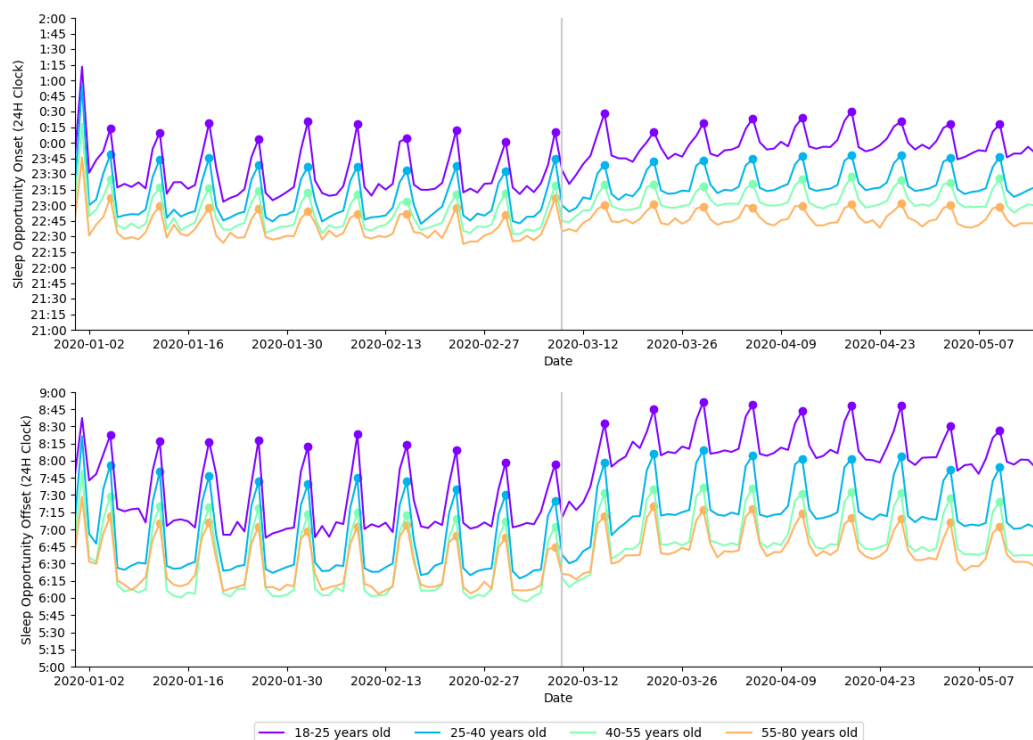
196

197

198

199

200



201

202 **Fig 1.** Daily average sleep opportunity onset time and sleep opportunity offset time in 2020
203 presented by age cohort. Each age cohort is plotted in a different color, indicated in the legend.
204 Filled circles indicate Sundays; a gray vertical line separates baseline and physical distancing.

205

206 In 2020, average sleep duration was significantly longer during physical distancing when
207 compared to baseline (*moderate effect size*). Average sleep duration was significantly shorter for
208 the corresponding time periods in 2019 (*very large effect size*). In 2020, average sleep duration
209 was significantly longer during physical distancing when compared to baseline for 18-25 year-olds
210 (*very large effect size*), 25-40 year-olds (*large effect size*), 40-55 year-olds (*large effect size*), 55-

211 80 year-olds (*moderate effect size*), 50-59 year-olds (*moderate effect size*), females (*large effect*
212 *size*), and males (*large effect size*) (Table 2). These data are presented in Fig 2.

213 In 2020, average social jet lag was significantly reduced during physical distancing when
214 compared to baseline (*large effect size*). Average social jet lag was significantly higher for the
215 corresponding time periods in 2019 (*very large effect size*). In 2020, average social jet lag was
216 significantly reduced during physical distancing when compared to baseline for 18-25 year-olds
217 (*very large effect size*), 25-40 year-olds (*very large effect size*), 40-55 year-olds (*very large effect*
218 *size*), 55-80 year-olds (*large effect size*), females (*large effect size*), and males (*large effect size*)
219 (Table 2).

220

221 Table 2. Objective sleep outcomes as a function of time period.

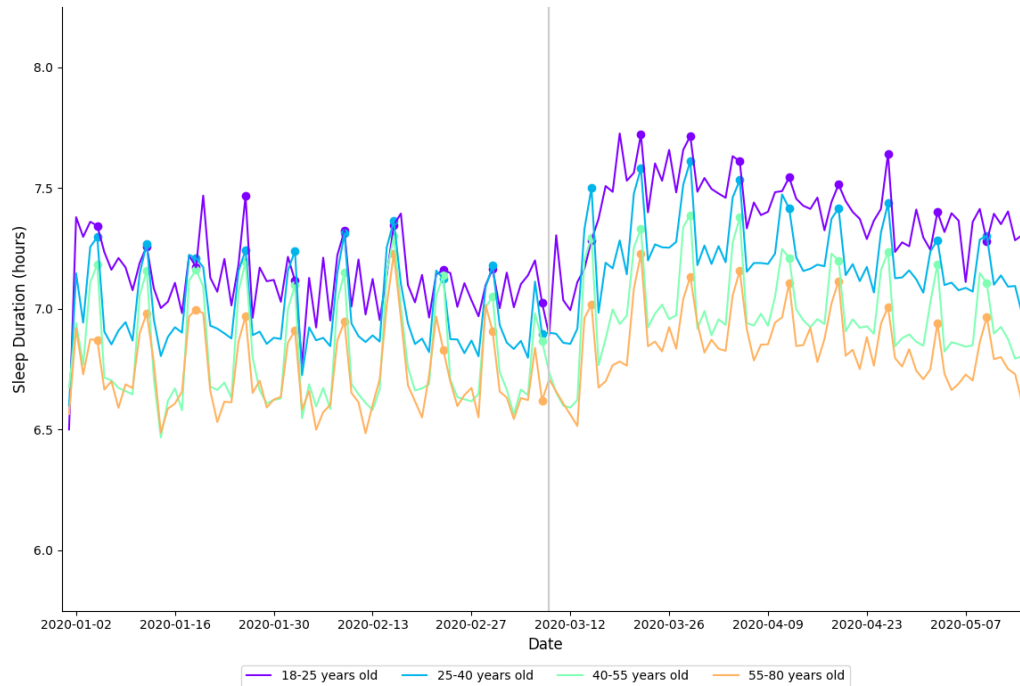
Variable	Time period		Outcomes	
	Baseline (M±SD)	Physical distancing (M±SD)	Difference (PD-BL; M±SEM)	Effect size (95% CL)
Sleep duration (hours)				
2019	7.25 ± 0.19	7.11 ± 0.22	-0.14 ± 0.003**	-0.68 (-0.72, -0.64)
2020	6.90 ± 0.17	7.10 ± 0.16	0.21 ± 0.009**	1.18 (1.07, 1.29)
18-25 year-olds	7.12 ± 0.15	7.41 ± 0.15	0.29 ± 0.003**	1.93 (1.81, 2.05)
25-40 year-olds	6.98 ± 0.17	7.21 ± 0.16	0.23 ± 0.004**	1.39 (1.32, 1.45)
40-55 year-olds	6.80 ± 0.22	6.98 ± 0.18	0.18 ± 0.008**	0.85 (0.76, 0.95)
55-80 year-olds	6.73 ± 0.16	6.85 ± 0.15	0.12 ± 0.004**	0.78 (0.69, 0.88)
Females	6.81 ± 0.18	7.01 ± 0.17	0.19 ± 0.003**	1.16 (1.10, 1.22)
Males	7.10 ± 0.18	7.33 ± 0.16	0.23 ± 0.003**	1.35 (1.30, 1.40)
Social jet lag (hours)				
2019	0.50 ± 0.22	0.56 ± 0.1	0.06 ± 0.002**	0.35 (0.31, 0.39)
2020	0.51 ± 0.22	0.38 ± 0.07	-0.13 ± 0.002**	-0.80 (-0.83, -0.76)
18-25 year-olds	0.67 ± 0.26	0.41 ± 0.13	-0.26 ± 0.012**	-1.26 (-1.43, -1.10)
25-40 year-olds	0.62 ± 0.24	0.47 ± 0.09	-0.15 ± 0.004**	-0.83 (-0.88, -0.77)
40-55 year-olds	0.43 ± 0.2	0.34 ± 0.07	-0.09 ± 0.003**	-0.60 (-0.67, -0.54)
55-80 year-olds	0.33 ± 0.16	0.25 ± 0.04	-0.08 ± 0.005**	-0.69 (-0.80, -0.57)
Females	0.5 ± 0.22	0.37 ± 0.08	-0.13 ± 0.004**	-0.79 (-0.86, -0.71)
Males	0.52 ± 0.21	0.39 ± 0.07	-0.13 ± 0.003**	-0.83 (-0.88, -0.79)

222 Notes: BL = baseline; PD = physical distancing; SEM = standard error of the mean; * = p-value

223 <0.05; ** = p-value <0.001.

224

225



226

227 **Fig 2.** Daily average sleep duration in 2020 aggregated by age cohort. Each cohort is plotted in a
228 different color, indicated in the legend. Filled circles indicate Sundays; a vertical gray line separates
229 baseline and physical distancing.

230

231 Exercise

232 Summaries of exercise behavior for age and gender cohorts are presented in Table 3 and Fig 3. In
233 2020, there was no difference in exercise frequency during physical distancing when compared to
234 baseline (*small effect size*). There was no difference in exercise intensity for the corresponding
235 time periods in 2019 (*trivial effect size*). In 2020, exercise frequency did not differ between

236 baseline and physical distancing for 18-25 year-olds (*small effect size*), 25-40 year-olds (*small*
 237 *effect size*), 40-55 year-olds (*moderate effect size*) and males (*small effect size*). Exercise frequency
 238 increased during physical distancing when compared to baseline for 55-80 year-olds (*moderate*
 239 *effect size*) and females (*small effect size*) (Table 3). These data are presented in Fig 3.

240
 241 Table 3. Daily percentage of users that engaged in exercise (i.e., exercise frequency) as a
 242 function of time period.

Cohort	Exercise frequency (%)		Outcomes	
	Baseline (M±SD)	Physical distancing (M±SD)	Difference (PD-BL; M±SEM)	Effect size (95% CL)
2019	66.98 ± 4.14	67.0 ± 4.67	0.02 ± 0.06	0.00 (-0.03, 0.04)
2020	59.9 ± 4.04	61.91 ± 4.36	2.01 ± 0.06**	0.48 (0.44, 0.52)
Age (years)				
18-25 year-olds	65.62 ± 10.44	62.83 ± 8.22	-2.79 ± 0.05**	-0.30 (-0.45, -0.14)
25-40 year-olds	60.09 ± 5.01	61.7 ± 4.77	1.61 ± 0.10*	-0.80 (-0.86, -0.75)
40-55 year-olds	58.72 ± 3.31	61.85 ± 4.33	3.13 ± 0.09**	0.46 (0.39, 0.52)
55-80 year-olds	59.27 ± 2.75	62.17 ± 5.14	2.89 ± 0.16**	0.84 (0.73, 0.95)
Sex				
Females	63.29 ± 5.49	65.43 ± 5.16	2.14 ± 0.14*	1.16 (1.08, 1.23)
Males	58.53 ± 3.61	60.45 ± 4.21	1.92 ± 0.06**	-0.72 (-0.77, -0.68)

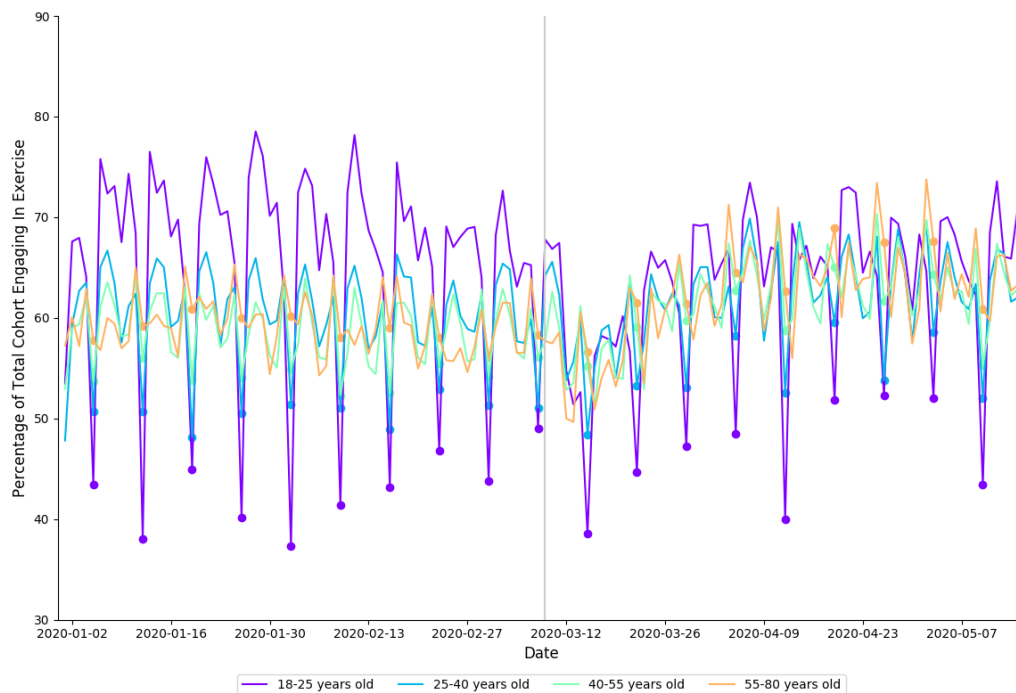
243 Notes: BL = baseline; PD = physical distancing; SEM = standard error of the mean; * = p-value

244 <0.05; ** = p-value <0.001.

245
 246 In 2020, individuals spent less time in HR zone 1 (*small effect size*), HR zone 2 (*moderate*
 247 *effect size*) and HR zone 3 (*large effect size*); and spent more time in HR zone 4 (*small effect size*),
 248 HR zone 5 (*moderate effect size*), and HR zone 6 (*moderate effect size*) during physical distancing
 249 compared to baseline (Table 4). For the corresponding periods in 2019, individuals spent less time
 250 in HR zone 1, and more time in HR zone 5 and HR zone 6. These data are presented in Fig 4.

251

252



253

254 **Fig 3.** Percentage of each age cohort in 2020 that logged an exercise session, by date. Each cohort
255 is shown in a different color, indicated in the legend. Filled circles indicate Sundays, a vertical
256 gray line separates baseline from physical distancing.

257

258

259 Table 4. Distribution of exercise intensity as a function of time period.

HR Zone	Time period		Outcomes	
	Baseline (M±SD)	Physical distancing (M±SD)	Difference (PD-BL; M±SEM)	Effect size (95% CL)
2019				
Zone 1	11.94 ± 0.51	10.94 ± 0.93	-1.0 ± 0.01**	-1.33 (-1.37, -1.29)
Zone 2	21.43 ± 1.08	20.82 ± 1.19	-0.61 ± 0.015*	-0.54 (-0.57, -0.50)
Zone 3	28.84 ± 0.57	29.25 ± 0.51	0.41 ± 0.007**	0.76 (0.72, 0.80)
Zone 4	24.28 ± 0.86	24.8 ± 1.06	0.52 ± 0.013*	0.54 (0.50, 0.58)
Zone 5	12.22 ± 0.95	12.77 ± 1.14	0.55 ± 0.014*	0.52 (0.49, 0.56)
Zone 6	1.30 ± 0.15	1.42 ± 0.19	0.12 ± 0.002**	0.70 (0.66, 0.74)
2020				
Zone 1	11.66 ± 0.8	12.09 ± 1.18	0.43 ± 0.014*	0.43 (0.39, 0.46)
Zone 2	20.32 ± 1.17	19.54 ± 0.91	-0.78 ± 0.014**	-0.74 (-0.78, -0.71)
Zone 3	27.73 ± 0.62	26.58 ± 0.54	-1.15 ± 0.008**	-1.98 (-2.02, -1.94)
Zone 4	25.54 ± 1.12	25.98 ± 1.19	0.44 ± 0.016*	0.38 (0.34, 0.42)
Zone 5	13.42 ± 1.11	14.33 ± 0.69	0.91 ± 0.013**	0.98 (0.95, 1.02)
Zone 6	1.33 ± 0.16	1.48 ± 0.12	0.15 ± 0.002**	1.06 (1.02, 1.10)

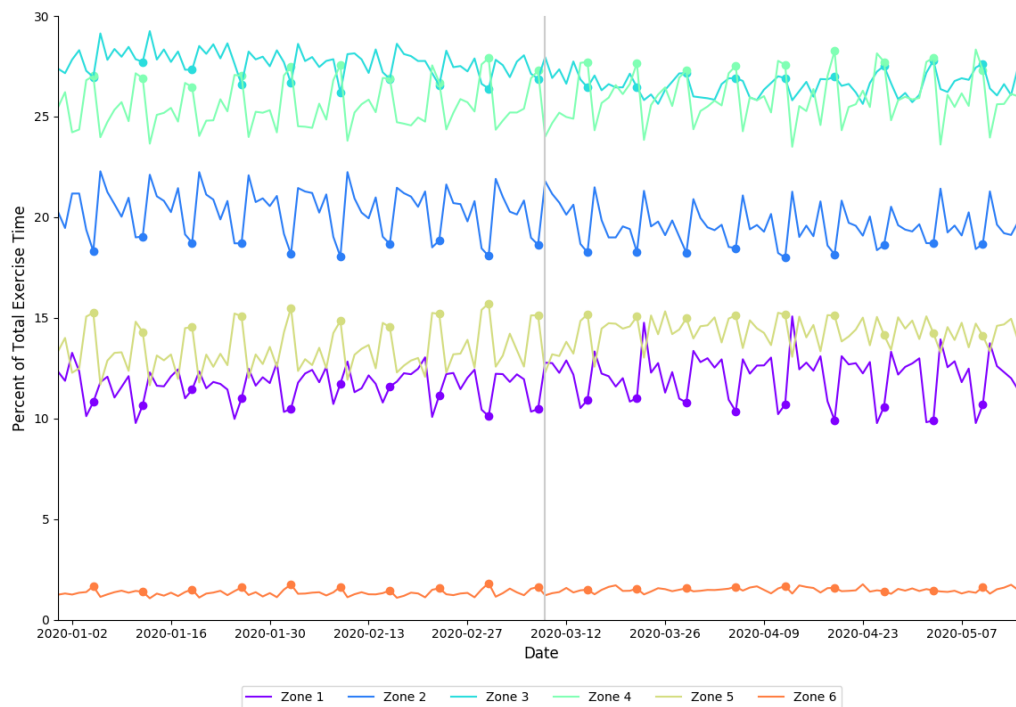
260 Notes: BL = baseline; PD = physical distancing; SEM = standard error of the mean; * = p-value

261 <0.05; ** = p-value <0.001.

262

263

264



265

266 **Fig 4.** Distribution of proportion of total exercise time spent in each heart rate zone in 2020,
267 arranged by date. Each heart rate zone is shown in a different color, indicated by the legend. Filled
268 circles indicate Sundays; the vertical gray line delineates between baseline and physical distancing.

269

270 **Cardiovascular indicators of health**

271 A summary of cardiovascular outcomes for age and gender cohorts are presented in Table
272 5. In 2020, average RHR was lower during physical distancing when compared to baseline (*large*
273 *effect size*). For the corresponding periods in 2019, average RHR was lower (moderate effect size).
274 In 2020, average RHR was lower during physical distancing when compared to baseline for 18-25
275 year-olds (*moderate effect size*), 25-40 year-olds (*moderate effect size*), 40-55 year-olds (*large*
276 *effect size*), 55-80 year-olds (*large effect size*), females (*large effect size*), and males (*large effect*
277 *size*) (Table 5). These data are presented in Fig 5.

278 In 2020, average HRV was higher during physical distancing when compared to baseline
279 (*large effect size*). Average HRV increased over the corresponding time periods in 2019 (*moderate*
280 *effect size*). In 2020, average HRV was higher during physical distancing when compared to
281 baseline for 18-25 year-olds (*moderate effect size*), 25-40 year-olds (*moderate effect size*), 40-55
282 year-olds (*large effect size*), 55-80 year-olds (*large effect size*), females (*large effect size*), and
283 males (*large effect size*) (Table 5). These data are presented in Fig 5.

284

285 Table 5. Cardiovascular outcomes as a function of time period.

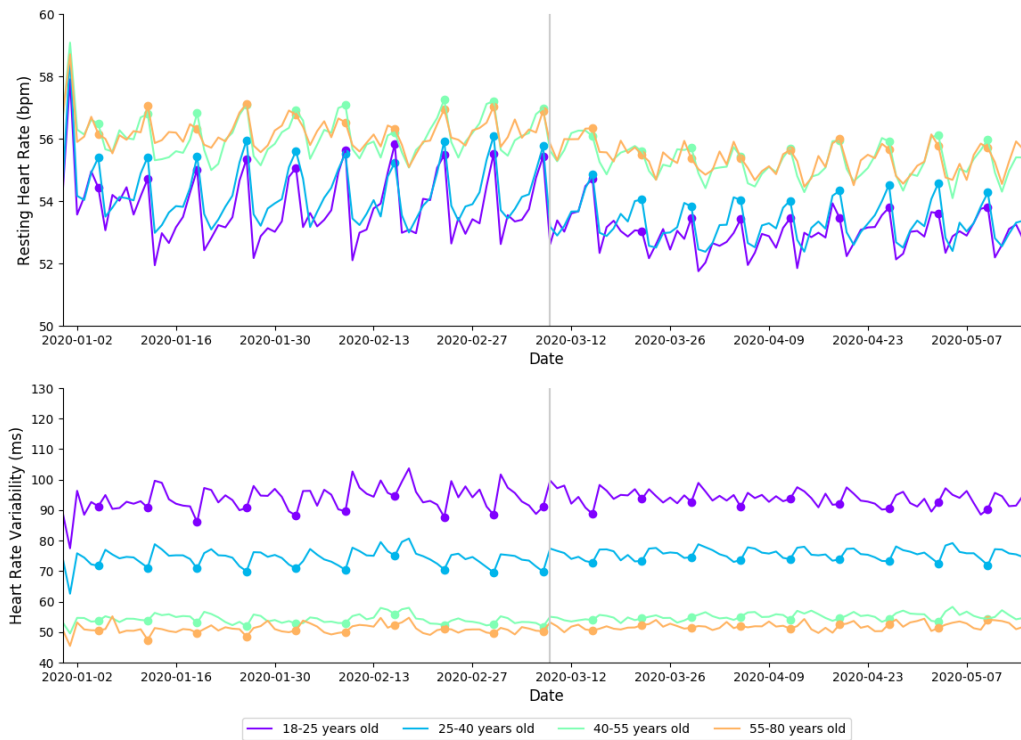
Variable	Time period		Outcomes	
	Baseline (M±SD)	Physical distancing (M±SD)	Difference (PD-BL; M±SEM)	Effect size (95% CL)
Resting heart rate (bpm)				
2019	55.15 ± 0.8	54.64 ± 0.76	-0.51 ± 0.011**	-0.65 (-0.69, -0.62)
2020	55.09 ± 0.81	54.2 ± 0.55	-0.90 ± 0.009**	-1.29 (-1.32, -1.25)
18-25 year-olds	53.82 ± 1.06	52.98 ± 0.58	-0.84 ± 0.048**	-0.98 (-1.14, -0.82)
25-40 year-olds	54.26 ± 0.97	53.31 ± 0.61	-0.95 ± 0.016**	-1.17 (-1.23, -1.12)
40-55 year-olds	56.11 ± 0.68	55.24 ± 0.53	-0.87 ± 0.014**	-1.43 (-1.49, -1.36)
55-80 year-olds	56.21 ± 0.52	55.35 ± 0.47	-0.86 ± 0.020**	-1.74 (-1.85, -1.62)
Females	56.74 ± 0.77	55.89 ± 0.52	-0.84 ± 0.017**	-1.29 (-1.37, -1.22)
Males	54.43 ± 0.85	53.5 ± 0.58	-0.93 ± 0.012**	-1.28 (-1.32, -1.23)
Heart rate variability (ms)				
2019	61.31 ± 2.04	64.28 ± 4.2	2.97 ± 0.045**	0.90 (0.86, 0.94)
2020	65.85 ± 2.28	66.82 ± 1.4	0.98 ± 0.026**	0.51 (0.47, 0.55)
18-25 year-olds	93.77 ± 4.25	93.87 ± 2.35	0.09 ± 0.193	0.03 (-0.13, 0.19)
25-40 year-olds	74.26 ± 2.77	75.58 ± 1.69	1.32 ± 0.045**	0.58 (0.52, 0.63)
40-55 year-olds	54.15 ± 1.52	55.11 ± 1.12	0.96 ± 0.031**	0.72 (0.65, 0.78)
55-80 year-olds	50.99 ± 1.56	51.98 ± 1.15	0.99 ± 0.054**	0.72 (0.61, 0.83)
Females	67.35 ± 2.2	68.4 ± 1.48	1.05 ± 0.048**	0.56 (0.49, 0.63)
Males	65.24 ± 2.34	66.18 ± 1.44	0.94 ± 0.031**	0.48 (0.44, 0.53)

286 Notes: BL = baseline; PD = physical distancing; bpm = beats per minute; ms = milliseconds; * =

287 p-value <0.05; ** = p-value <0.001.

288

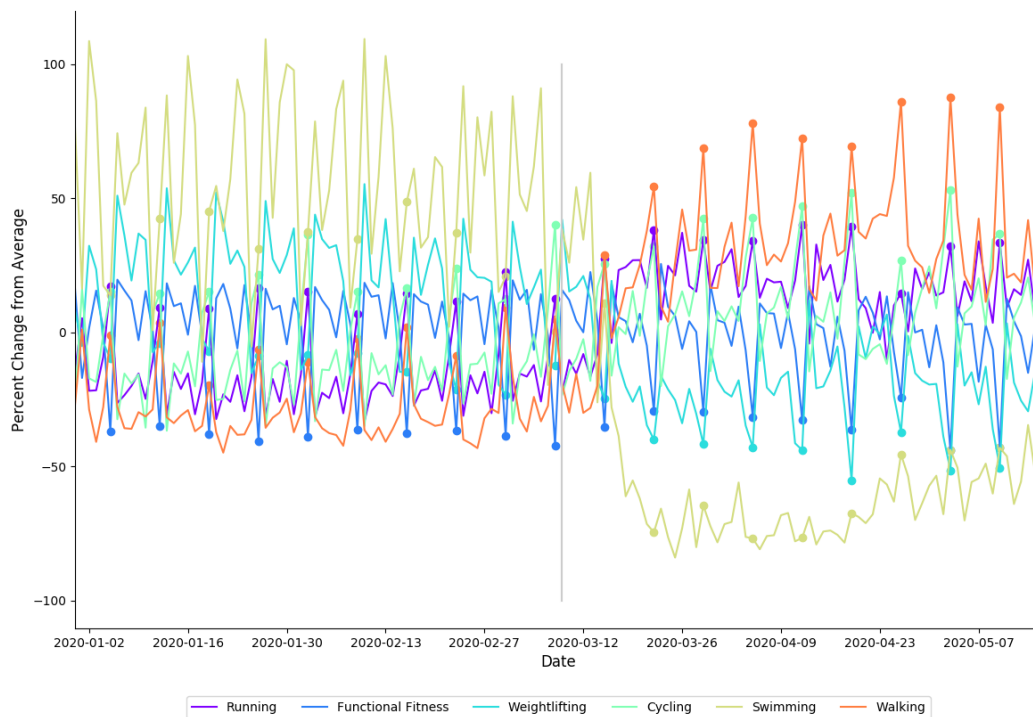
289



290
291 **Fig 5.** Changes in RHR (top) and HRV (bottom) in 2020 arranged by date and age cohort. Each
292 cohort is shown with a differently colored line as indicated in the legends. bpm = beats per minute;
293 ms = milliseconds. Filled circles indicate Sundays; a gray vertical line separates baseline from
294 physical distancing.

295
296
297
298
299
300
301

302



303

304 Fig 6. Percentage of change from average for the six most popular exercise modalities. Each
305 modality is shown with a differently colored line as indicated in the legends. Filled circles indicate
306 Sundays; a gray vertical line separates baseline from physical distancing.

307

308

309

310 **Comparison of 2019 and 2020**

311 A comparison of changes to sleep and exercise variables during designated time periods (i.e., BL-
312 PD) between 2019 and 2020 are presented in Table 6. Subjects significantly increased sleep
313 opportunity duration (*large effect size*), delayed sleep offset time (*moderate effect size*), had an
314 earlier sleep offset time (*moderate effect size*), increased sleep duration (*large effect size*) and
315 reduced social jet lag (*moderate effect size*) during PD in 2020 when compared to the shift in the
316 corresponding time periods in 2019 (Table 6). Subjects decreased exercise frequency (*very large*
317 *effect size*) during PD in 2020 when compared to the changes seen in the corresponding time
318 periods in 2019. For exercise intensity, subjects significantly decreased the proportion of time
319 spent in zones 2 (*trivial effect size*), 3 (*very large effect size*) and 6 (*trivial effect sizes*), and
320 significantly increased the proportion of time spent in zones 1 (*large effect size*), 4 (*trivial effect*
321 *size*), and 5 (*small effect size*) during PD in 2020 when compared to the changes in the
322 corresponding time periods in 2019. Subjects reduced RHR (*small effect size*) and increased HRV
323 (*moderate effect size*) during PD in 2020 when compared to the changes seen in the corresponding
324 time periods in 2019.

325

326 Table 6. Differences in sleep and exercise related variables as a function of year.

Variable	Year		Outcomes	
	2019 (BL-PD; M±SD)	2020 (BL-PD; M±SD)	Difference (2020-2019; M±SEM)	Effect size (95% CL)
Sleep opportunity duration (h)	-0.05 ± 0.20	0.24 ± 0.19	0.29 ± 0.003	1.49 (1.45, 1.53)
Sleep onset time (hh:mm)	00:00 ± 0:18	00:15 ± 0:15	00:15 ± 00:00	0.91 (0.87, 0.94)
Sleep offset time (hh:mm)	-00:03 ± 0:28	-00:29 ± 0:25	-00:26 ± 00:00	0.98 (0.94, 1.02)
Sleep duration (h)	-0.14 ± 0.20	0.21 ± 0.17	0.35 ± 0.003	1.89 (1.85, 1.93)
Social jet lag (h)	0.00 ± 0.20	-0.20 ± 0.20	-0.2 ± 0.003	-1.00 (-1.04, -0.96)
Exercise frequency (%)	0.02 ± 0.04	2.01 ± 0.04	1.99 ± 0.001	49.75 (49.38, 50.12)
Exercise intensity				
Zone 1 (%)	-1.0 ± 0.75	0.43 ± 1.0	1.43 ± 0.012	1.62 (1.58, 1.66)
Zone 2 (%)	-0.61 ± 1.13	-0.78 ± 1.04	-0.17 ± 0.015	-0.16 (-0.19, -0.12)
Zone 3 (%)	0.41 ± 0.54	-1.15 ± 0.58	-1.56 ± 0.007	-2.78 (-2.83, -2.74)
Zone 4 (%)	0.52 ± 0.96	0.44 ± 1.15	-0.08 ± 0.014	-0.08 (-0.11, -0.04)
Zone 5 (%)	0.55 ± 1.04	0.91 ± 0.92	0.36 ± 0.013	0.37 (0.33, 0.40)
Zone 6 (%)	0.12 ± 0.17	0.15 ± 0.14	0.03 ± 0.002	0.19 (0.16, 0.23)
RHR (bpm)	-0.51 ± 0.78	-0.90 ± 0.69	-0.39 ± 0.010	-0.53 (-0.57, -0.49)
HRV (ms)	2.97 ± 3.27	0.98 ± 1.87	-1.99 ± 0.036	-0.75 (-0.79, -0.71)

327 Notes: BL = baseline; PD = physical distancing; bpm = beats per minute; ms = milliseconds; * =

328 p-value <0.05; ** = p-value <0.001.

329

330

331 **Discussion**

332 The aim of this study was to detail changes in health related behavior and outcomes associated
333 with the introduction of physical distancing mandates during the COVID-19 pandemic. A
334 retrospective analysis of sleep and activity patterns was conducted covering January 1, 2020
335 through May 15, 2020 including 5,436 US-based WHOOP members. Given that the timeframes
336 in the study included changes of season and daylight saving, a corresponding dataset from 2019
337 was included to provide additional context. Findings were divided into sleep, activity, and
338 cardiovascular indicators of health and are discussed below.

339 **Sleep**

340 The primary sleep related findings were (1) sleep onset shifted later during physical distancing;
341 (2) average sleep duration increased in all age and gender cohorts during physical distancing and
342 (3) social jet lag – i.e., weekday-to-weekend variability of sleep opportunity onset and offset –
343 decreased for all gender and age cohorts during physical distancing.

344 The findings of this study suggest that the implementation of physical distancing mandates
345 may have impacted the sleep/wake behavior of this population. Along with increased sleep
346 opportunity duration during physical distancing, an apparent shift towards a later sleep onset and
347 offset was evident. It appears that subjects were able to obtain more sleep by delaying sleep offset.
348 It can be suggested that this behavioral change may be due to reduced morning commitments
349 during physical distancing (e.g., commute). The shifts seen in 2019 support this finding, with the
350 same subjects exhibiting earlier wake times (Table 1) and less total sleep in the corresponding
351 periods (Table 2). A similar delay in sleep timing during COVID-19 restrictions have been
352 reported in multiple survey-based studies [26, 27, 28]. In regard to changes among age cohorts,
353 18-25 year-olds experienced the largest delay their sleep offset time. This finding reflects the

354 established differences in chronobiology across age cohorts - younger individuals tend to have a
355 late chronotype while older individuals skew towards an earlier chronotype [29]. Given that school
356 and collegiate based commitments likely reduced during physical distancing – the data suggests
357 that teenagers and young adults returned to a more chronobiologically suitable sleep period (i.e.,
358 go to bed late, wake up late).

359 In addition to exhibiting differences in the magnitude of average sleep timing shifts, Fig 1
360 highlights a significant reduction in the social jet lag during physical distancing. In contrast, a
361 significant increase in social jet lag was seen in 2019. It is likely that the reduction in social jet lag
362 seen in 2020 were due to restrictions on social or extra-curricular activities during physical
363 distancing. As may be expected, this was most prominent in the younger cohorts, with larger
364 reductions seen when compared to older cohorts (Table 2). In support of our findings, a recent
365 global survey of 11,431 adults from 40 countries found that social jet lag reduced by approximately
366 30 minutes during physical distancing restrictions [27].

367 Average nightly sleep duration in 2020 was significantly higher during physical distancing
368 than during baseline for all age cohorts (Fig 1). This finding is in contrast to the reduction in sleep
369 duration seen in 2019 (Table 6) – suggesting that this change was likely due to the shifts in
370 sleep/wake behavior experienced during physical distancing. Once again, larger changes were seen
371 in the younger age cohorts (i.e., 18-25 year old's). These findings suggest that physical distancing
372 may have alleviated societal factors (e.g., work or academic commitments, commuting) that
373 restrict sleep opportunity, allowing individuals to revert towards biological sleep/wake
374 preferences. Practical applications can be made across all age cohorts; however, the data highlight
375 important changes in behavior amongst the 18-25 year-old cohort. As mentioned above,
376 individuals from this age cohort typically have late chronotypes (i.e., their circadian drive for sleep

377 initiates later in the night). However, they are often expected to fulfil academic or sport related
378 commitments early in the morning - decreasing opportunity for sleep. Prior literature has
379 demonstrated subjective and objective benefits associated with even minor extension to average
380 sleep duration when sustained over time; a 2018 study by Lo et al. [30] showed that 10 minutes of
381 extended sleep duration in secondary school students correlated with improved alertness and
382 mental health. These findings show that despite their typically late chronotype, 18-25 year-olds
383 will shift their sleep offset later if given the opportunity. In addition to improvements in cognition,
384 sleep extensions have been shown to correspond with statistically significant reductions in systolic
385 blood pressure [31].

386 **Exercise**

387 The primary exercise findings were that (1) a higher proportion of individuals performed exercise
388 during physical distancing; (2) individuals increased exercise intensity during physical distancing,
389 and (3) individuals changed the types of athletic activities they were performing during physical
390 distancing. The changes in activities observed are consistent with adherence to bans on gatherings
391 of more than 10 people and closures of athletic facilities such as fitness clubs and gyms.
392 Coincidentally, athletic activities that are compliant to physical distancing appear to be those that
393 also require high cardiovascular load (i.e., running, cycling). This is supported by a decrease in
394 weightlifting and increases in activities like running (Fig 6). This increase may be due to the
395 minimal equipment needs (e.g., pair of sneakers for running), and that individuals are likely to
396 prioritize outdoor activities whilst confined to their homes for much of each day. Previous studies
397 suggest that engagement in new exercise modalities may increase exercise intensity [32], improve
398 athletic performance and improve cardiovascular health [33, 34]. Therefore, alterations to training

399 stimulus (i.e., exercise modality), and the associated physiological adaptations, may be an
400 unexpected side effect of physical distancing restrictions.

401 In addition to changes in exercise modalities performed, our data show that individuals
402 exercised more intensely during physical distancing (Fig 4). In 2020, the highest three heart rate
403 zones (collectively, 70-100% HRR) occupy a larger proportion of total exercise time during
404 physical distancing than they did during baseline (Table 4). Similar increases were seen in Zones
405 4, 5 and 6 in 2019, however there was a significantly larger shift seen in Zone 5 during 2020 (Table
406 6). In 2020, distributions in relative time spent in heart rate zones 2 through 5 show a cyclical
407 pattern with a 7-day period that is more pronounced during baseline than physical distancing;
408 relatively more time is spent in zones 4, 5, and 6 on weekends, while more time is spent in zones
409 2 and 3 on weekdays (Fig 4). The differentiation between weekend and weekday heart rate zone
410 distributions is less pronounced in all heart rate zones during physical distancing than it was during
411 baseline. This suggests that individuals were performing more intense exercise on weekdays
412 during physical distancing when compared to baseline. An increase in time spent in these higher
413 heart rate zones may mean an increase in anaerobic training, which has been previously
414 demonstrated to reduce RHR and improve endurance [35]. The present study highlights changes
415 in exercise modality and increases in exercise intensity in this subset of WHOOP users during
416 physical distancing restrictions. Irrespective of physical distancing mandates, it is physiologically
417 sound to suggest that such behaviors, if sustained, should result in improved health outcomes [36].

418 **Cardiovascular Indicators of health**

419 The main finding regarding cardiovascular indicators of health was that average RHR decreased
420 and HRV increased during physical distancing (Fig 3). Both outcomes represent an improvement
421 in cardiovascular health – however it should be noted that similar shifts were seen in 2019. In

422 particular, the increase in HRV seen in 2019 was larger than the increase seen in 2020 (Table 6).
423 While the mechanisms behind these differences are unclear, HRV is known to be sensitive to
424 changes in a range of behavioral factors (e.g., exposure to novel training stimuli, alcohol
425 consumption; overtraining). A possible explanation for the smaller increase seen in 2020 may be
426 that increased exercise intensity during physical distancing increased the contribution of the
427 sympathetic nervous system – therefore resulting smaller acute increases in HRV.

428 For RHR, there was a larger reduction in 2020 compared to 2019, suggesting that changes
429 to sleep and exercise behaviors during physical distancing may have had positive benefits on
430 cardiovascular health. Analysis of the baseline period shows expected moderate differences across
431 age cohorts in which younger individuals show signs of greater cardiovascular fitness than older
432 cohorts. While it is well documented that HRV declines with age [37, 38], previous studies have
433 demonstrated no age-related increase in RHR. For example, Kostis et al [39] found no relationship
434 between age and RHR; this apparent discrepancy may be related to the small effect size and the
435 relatively small datasets of previous studies. Therefore, a novel finding of the present study is that
436 older cohorts presented with progressively higher RHR.

437 **Limitations and boundary conditions**

438 Interpretations of the present results must be made with consideration to the boundary conditions.
439 The WHOOP user demographic is likely to be more health conscious, have a higher socioeconomic
440 status and are more likely to have the ability to work from home. The findings of this study may
441 not be representative of global changes in behavior due to all individuals being in the United States
442 of America. While it is reasonable to suggest that individuals from this demographic might have
443 decreased professional commitments during physical distancing, it is also possible that exercise
444 opportunity may decrease due to childcare or other at-home commitments. No data were collected

445 regarding the mental health of participants and the severity and/or adherence to physical distancing
446 mandates among the subjects. The date chosen to distinguish between the respective periods was
447 an estimated timeline along which most users would have been subject to some level of physical
448 distancing mandate or recommendation. The high number of statistical comparisons (i.e., multiple
449 testing) and large sample size may have increased the likelihood of significant findings in the
450 analyses. However, Bonferroni corrections were made to reduce the likelihood of type 1 errors due
451 to multiple testing and Cohen's d effect sizes were used to assess the magnitude of each effect.

452

453 **Conclusions**

454 The aim of this study was to report on the sleep and exercise behavioral changes associated with
455 COVID-19 related physical distancing mandates. The findings suggest that physical distancing
456 mandates may have resulted in changes to sleep and exercise patterns, which may have
457 consequences on the health and wellbeing of this demographic. While improved sleep and exercise
458 patterns appear to be the mechanism for positive health-related behavior change during physical
459 distancing, it is unclear which specific barriers were limiting these activities prior to physical
460 distancing. It is reasonable to assume that decreases in business hours-based commitments (e.g.,
461 commuting) has previously impacted health related behavior (i.e., exercise and sleep). Therefore,
462 in the context of a post-pandemic society, increased flexibility in how business, academia and
463 other professional endeavors are conducted (i.e., ability to work from home) may allow individuals
464 more opportunity to engage in health enhancing behaviors. Future research will be required as
465 countries begin to reopen to investigate which behaviors are maintained, how these behaviors
466 impact mental health, and if cohorts return to their previous behaviors.

467 **References**

- 468 1. Coronaviridae Study Group of the International Committee on Taxonomy of Viruses. The species
469 *Severe acute respiratory syndrome-related coronavirus*: classifying 2019-nCoV and naming it
470 SARS-CoV-2. *Nat Microbiol.* 2020;5(4):536-44. doi: 10.1038/s41564-020-0695-z. PMID:
471 32123347.
- 472 2. Banks S, Dinges DF. Behavioral and physiological consequences of sleep restriction. *J Clin Sleep*
473 *Med.* 2007;3(5):519-28. PMID: 17803017.
- 474 3. Buxton OM, Pavlova M, Reid EW, Wang W, Simonson DC, Adler GK. Sleep restriction for 1
475 week reduces insulin sensitivity in healthy men. *Diabetes.* 2010;59(9):2126-33. doi: 10.2337/db09-
476 0699. PMID: 20585000.
- 477 4. Hsieh SD, Muto T, Murase T, Tsuji H, Arase Y. Association of short sleep duration with obesity,
478 diabetes, fatty liver and behavioral factors in Japanese men. *Intern Med.* 2011;50(21):2499-502.
479 doi: 10.2169/internalmedicine.50.5844. PMID: 22041348.
- 480 5. Cappuccio FP, Cooper D, D'Elia L, Strazzullo P, Miller MA. Sleep duration predicts cardiovascular
481 outcomes: a systematic review and meta-analysis of prospective studies. *Eur Heart J.*
482 2011;32(12):1484-92. doi: 10.1093/eurheartj/ehr007. PMID: 21300732.
- 483 6. Zhang J, Paksarian D, Lamers F, Hickie IB, He J, Merikangas KR. Sleep Patterns and Mental
484 Health Correlates in US Adolescents. *J Pediatr.* 2017;182:137-43. doi:
485 10.1016/j.jpeds.2016.11.007. PMID: 27939122.
- 486 7. Kirschen GW, Jones JJ, Hale L. The Impact of Sleep Duration on Performance Among Competitive
487 Athletes: A Systematic Literature Review. *Clin J Sport Med.* 2018. doi:
488 10.1097/JSM.0000000000000622. PMID: 29944513.
- 489 8. Arnal PJ, Sauvet F, Leger D, van Beers P, Bayon V, Bougard C, et al. Benefits of Sleep Extension
490 on Sustained Attention and Sleep Pressure Before and During Total Sleep Deprivation and
491 Recovery. *Sleep.* 2015;38(12):1935-43. doi: 10.5665/sleep.5244. PMID: 26194565.

- 492 9. Swinbourne R, Miller J, Smart D, Dulson DK, Gill N. The Effects of Sleep Extension on Sleep,
493 Performance, Immunity and Physical Stress in Rugby Players. *Sports (Basel)*. 2018;6(2). doi:
494 10.3390/sports6020042. PMID: 29910346.
- 495 10. Phillips AJK, Clerx WM, O'Brien CS, Sano A, Barger LK, Picard RW, et al. Irregular sleep/wake
496 patterns are associated with poorer academic performance and delayed circadian and sleep/wake
497 timing. *Sci Rep*. 2017;7(1):3216. doi: 10.1038/s41598-017-03171-4. PMID: 28607474.
- 498 11. Czeisler CA. Duration, timing and quality of sleep are each vital for health, performance and safety.
499 *Sleep Health*. 2015;1(1):5-8. doi: 10.1016/j.sleh.2014.12.008. PMID: 29073414.
- 500 12. Wright KP, Jr., Hull JT, Hughes RJ, Ronda JM, Czeisler CA. Sleep and wakefulness out of phase
501 with internal biological time impairs learning in humans. *J Cogn Neurosci*. 2006;18(4):508-21. doi:
502 10.1162/jocn.2006.18.4.508. PMID: 16768357.
- 503 13. Vetter C, Devore EE, Wegrzyn LR, Massa J, Speizer FE, Kawachi I, et al. Association Between
504 Rotating Night Shift Work and Risk of Coronary Heart Disease Among Women. *JAMA*.
505 2016;315(16):1726-34. doi: 10.1001/jama.2016.4454. PMID: 27115377.
- 506 14. Schernhammer ES, Laden F, Speizer FE, Willett WC, Hunter DJ, Kawachi I, et al. Rotating night
507 shifts and risk of breast cancer in women participating in the nurses' health study. *J Natl Cancer*
508 *Inst*. 2001;93(20):1563-8. doi: 10.1093/jnci/93.20.1563. PMID: 11604480.
- 509 15. Grier T, Canham-Chervak M, Anderson MK, Bushman TT, Jones BH. The effects of cross-training
510 on fitness and injury in women. *US Army Med Dep J*. 2015:33-41. PMID: 26101904.
- 511 16. Nielsen RO, Parner ET, Nohr EA, Sorensen H, Lind M, Rasmussen S. Excessive progression in
512 weekly running distance and risk of running-related injuries: an association which varies according
513 to type of injury. *J Orthop Sports Phys Ther*. 2014;44(10):739-47. doi: 10.2519/jospt.2014.5164.
514 PMID: 25155475.
- 515 17. Patel H, Alkhawam H, Madanieh R, Shah N, Kosmas CE, Vittorio TJ. Aerobic vs anaerobic
516 exercise training effects on the cardiovascular system. *World J Cardiol*. 2017;9(2):134-8. doi:
517 10.4330/wjc.v9.i2.134. PMID: 28289526.

- 518 18. Berryhill S, Morton CJ, Dean A, Berryhill A, Provencio-Dean N, Patel SI, et al. Effect of Wearables
519 on Sleep in Healthy Individuals: A Randomized Cross-Over Trial and Validation Study.
520 0(0);jcs.8356. doi: doi:10.5664/jcs.8356.
- 521 19. Aune D, Sen A, o'Hartaigh B, Janszky I, Romundstad PR, Tonstad S, et al. Resting heart rate and
522 the risk of cardiovascular disease, total cancer, and all-cause mortality - A systematic review and
523 dose-response meta-analysis of prospective studies. *Nutr Metab Cardiovasc Dis.* 2017;27(6):504-
524 17. doi: 10.1016/j.numecd.2017.04.004. PMID: 28552551.
- 525 20. Thayer JF, Yamamoto SS, Brosschot JF. The relationship of autonomic imbalance, heart rate
526 variability and cardiovascular disease risk factors. *Int J Cardiol.* 2010;141(2):122-31. doi:
527 10.1016/j.ijcard.2009.09.543. PMID: 19910061.
- 528 21. Cucinotta D, Vanelli M. WHO Declares COVID-19 a Pandemic. *Acta Biomed.* 2020;91(1):157-
529 60. doi: 10.23750/abm.v91i1.9397. PMID: 32191675.
- 530 22. Executive Office of the President. Proclamation 9994: Declaring a National Emergency
531 Concerning the Novel Coronavirus Disease (COVID-19) Outbreak. March 13, 2020.
- 532 23. Miller DJ, Lastella M, Scanlan AT, Bellenger C, Halson SL, Roach GD, et al. A validation study
533 of the WHOOP strap against polysomnography to assess sleep. *Journal of Sports Sciences.* 2020:1-
534 6. doi: 10.1080/02640414.2020.1797448.
- 535 24. Wittman C, Dinich J, Merrow M, Roenneberg T. Social Jetlag: Misalignment of Biological and
536 Social Time. *Chronobiol Int.* 2006; 23(1-2):497-509. doi: 10.1080/07420520500545979. PMID:
537 16687322
- 538 25. Hopkins WG, Marshall SW, Batterham AM, Hanin J. Progressive statistics for studies in sports
539 medicine and exercise science. *Med Sci Sports Exerc.* 2009;41(1):3-13. doi:
540 10.1249/MSS.0b013e31818cb278. PMID: 19092709.
- 541 26. Cellini N, Conte F, De Rosa O, Giganti F, Malloggi S, Reynt M, et al. Changes in sleep timing and
542 subjective sleep quality during the COVID-19 lockdown in Italy and Belgium: age, gender and

- 543 working status as modulating factors. *Sleep Med.* 2021;77:112-9. Epub 2020/12/22. doi:
544 10.1016/j.sleep.2020.11.027.
- 545 27. Korman M, Tkachev V, Reis C, Komada Y, Kitamura S, Gubin D, et al. COVID-19-mandated
546 social restrictions unveil the impact of social time pressure on sleep and body clock. *Scientific*
547 *Reports.* 2020;10(1):22225. doi: 10.1038/s41598-020-79299-7.
- 548 28. Facer-Childs ER, Hoffman D, Tran JN, Drummond SPA, Rajaratnam SMW. Sleep and mental
549 health in athletes during COVID-19 lockdown. *Sleep.* 2021. doi: 10.1093/sleep/zsaa261.
- 550 29. Fischer D, Lombardi DA, Marucci-Wellman H, Roenneberg T. Chronotypes in the US - Influence
551 of age and sex. *PLoS One.* 2017;12(6):e0178782. doi: 10.1371/journal.pone.0178782. PMID:
552 28636610.
- 553 30. Lo JC, Lee SM, Lee XK, Sasmita K, Chee N, Tandj J, et al. Sustained benefits of delaying school
554 start time on adolescent sleep and well-being. *Sleep.* 2018;41(6). doi: 10.1093/sleep/zsy052. PMID:
555 29648616.
- 556 31. Stock AA, Lee S, Nahmod NG, Chang AM. Effects of sleep extension on sleep duration, sleepiness,
557 and blood pressure in college students. *Sleep Health.* 2020;6(1):32-9. doi:
558 10.1016/j.sleh.2019.10.003. PMID: 31753739.
- 559 32. Godfrey RJ. Cross-training. *Sports Exercise and Injury.* 1998;(4):50-5.
- 560 33. Tanaka H. Effects of cross-training. Transfer of training effects on VO₂max between cycling,
561 running and swimming. *Sports Med.* 1994;18(5):330-9. doi: 10.2165/00007256-199418050-
562 00005. PMID: 7871294.
- 563 34. Tanaka H, Swensen T. Impact of resistance training on endurance performance. A new form of
564 cross-training? *Sports Med.* 1998;25(3):191-200. doi: 10.2165/00007256-199825030-00005.
565 PMID: 9554029.
- 566 35. Hunter GR, McCarthy JP. Pressor Response Associated With High-Intensity Anaerobic Training.
567 *The Physician and Sportsmedicine.* 1983;11(4):150-62. doi: 10.1080/00913847.1983.11708515.

- 568 36. Cornelissen VA, Verheyden B, Aubert AE, Fagard RH. Effects of aerobic training intensity on
569 resting, exercise and post-exercise blood pressure, heart rate and heart-rate variability. *J Hum*
570 *Hypertens.* 2010;24(3):175-82. Epub 2009/06/26. doi: 10.1038/jhh.2009.51. PubMed PMID:
571 19554028.
- 572 37. Schwartz JB, Gibb WJ, Tran T. Aging effects on heart rate variation. *J Gerontol.* 1991;46(3):M99-
573 106. doi: 10.1093/geronj/46.3.m99. PMID: 2030273.
- 574 38. Jensen-Urstad K, Storck N, Bouvier F, Ericson M, Lindblad LE, Jensen-Urstad M. Heart rate
575 variability in healthy subjects is related to age and gender. *Acta Physiol Scand.* 1997;160(3):235-
576 41. doi: 10.1046/j.1365-201X.1997.00142.x. PMID: 9246386.
- 577 39. Kostis JB, Moreyra AE, Amendo MT, Di Pietro J, Cosgrove N, Kuo PT. The effect of age on heart
578 rate in subjects free of heart disease. Studies by ambulatory electrocardiography and maximal
579 exercise stress test. *Circulation.* 1982;65(1):141-5. doi: 10.1161/01.cir.65.1.141. PMID: 7198013.