

1 **A tertiary center experience of multiple myeloma patients with COVID-19:**
2 **lessons learned and the path forward**

3
4 Bo Wang^{1*}, Oliver Van Oekelen^{1*}, Tarek H. Mouhieddine², Diane Marie Del Valle¹, Joshua
5 Richter¹, Hearn Jay Cho¹, Shambavi Richard¹, Ajai Chari¹, Sacha Gnjjatic¹, Miriam Merad^{1,3},
6 Sundar Jagannath¹, Samir Parekh¹, Deepu Madduri¹

7
8 *Equal contribution

- 9
10 1- Tisch Cancer Institute, Icahn School of Medicine at Mount Sinai, New York, NY, 10029,
11 USA.
12 2- Department of Medicine, Icahn School of Medicine at Mount Sinai, New York, NY,
13 10029, USA.
14 3- Precision Immunology Institute, Icahn School of Medicine at Mount Sinai, New York, NY,
15 10029, USA.
16
17
18
19
20
21
22
23
24
25
26

27 **Corresponding author:**
28 Deepu Madduri, MD
29 Tisch Cancer Institute
30 Icahn School of Medicine at Mount Sinai
31 10 East 102nd Street, 6th Floor, New York, NY 10029
32 Phone: 212-241-7873
33 deepu.madduri@mountsinai.org
34
35
36
37
38
39
40
41
42

43 Journal: Journal of Hematology and Oncology
44 Article type: Research Article
45 Word count: 3824
46 Tables: 4
47 Figures: 1 (supplemental)
48 References: 40
49 Keywords: multiple myeloma, smoldering multiple myeloma, COVID-19, SARS, SARS-Cov-2,
50 New York, pandemic

51 **Abstract**

52 **Background:** The COVID-19 pandemic, caused by SARS-CoV-2 virus, has resulted in over
53 100,000 deaths in the United States. Our institution has treated over 2,000 COVID-19 patients
54 during the pandemic in New York City. The pandemic directly impacted cancer patients and the
55 organization of cancer care. Mount Sinai Hospital has a large and diverse multiple myeloma
56 (MM) population. Herein, we report the characteristics of COVID-19 infection and serological
57 response in MM patients in a large tertiary care institution in New York.

58

59 **Methods:** We performed a retrospective study on a cohort of 58 patients with a plasma-cell
60 disorder (54 MM, 4 smoldering MM) who developed COVID-19 between March 1, 2020 and
61 April 30, 2020. We report epidemiological, clinical and laboratory characteristics including
62 persistence of viral detection by polymerase chain reaction (PCR) and anti-SARS-CoV-2
63 antibody testing, treatments initiated, and outcomes.

64

65 **Results:** Of the 58 patients diagnosed with COVID-19, 36 were hospitalized and 22 were
66 managed at home. The median age was 67 years; 52% of patients were male and 63% were
67 non-white. Hypertension (64%), hyperlipidemia (62%), obesity (37%), diabetes mellitus (28%),
68 chronic kidney disease (24%) and lung disease (21%) were the most common comorbidities. In
69 the total cohort, 14 patients (24%) died. Older age (>70 years), male sex, cardiovascular risk,
70 and patients not in complete remission (CR) or stringent CR were significantly ($p<0.05$)
71 associated with hospitalization. Among hospitalized patients, laboratory findings demonstrated
72 elevation of traditional inflammatory markers (CRP, ferritin, D-dimer) and a significant ($p<0.05$)
73 association between elevated inflammatory markers, severe hypogammaglobulinemia, non-
74 white race, and mortality. Ninety-six percent (22/23) of patients developed antibodies to SARS-
75 CoV-2 at a median of 32 days after initial diagnosis. Median time to PCR negativity was 43
76 (range 19-68) days from initial positive PCR.

77

78 **Conclusions:** Drug exposure and MM disease status at the time of contracting COVID-19 had
79 no bearing on mortality. Mounting a severe inflammatory response to SARS-CoV-2 and severe
80 hypogammaglobulinemia were associated with higher mortality. The majority of patients
81 mounted an antibody response to SARS-CoV-2. These findings pave a path to identification of
82 vulnerable MM patients who need early intervention to improve outcome in future outbreaks of
83 COVID-19.

84

85

86

87

88

89

90

91

92

93

94

95

96

97

98

99

100

101

102 **Introduction**

103 The coronavirus disease 2019 (COVID-19) pandemic, caused by Severe Acute Respiratory
104 Syndrome Coronavirus-2 (SARS-CoV-2), represents a world-wide public health crisis. Patient
105 care has been drastically altered, primarily in epidemic, urban areas. As of May 22, 2020, New
106 York City had nearly 200,000 confirmed cases of COVID-19 with over 16,000 deaths and a
107 patient death rate of 21%¹, with cancer patients comprising about 8% of all COVID-19 fatalities
108 in the state of New York². Mount Sinai Hospital, a tertiary care center in New York City, has
109 treated over 2,000 admitted COVID-19 patients thus far. At our cancer center, we actively care
110 for a large and particularly diverse population of over 3000 multiple myeloma (MM) patients.
111 Like many other centers in the region and the world, clinical care at our institution has seen
112 significant changes in an attempt to mitigate the spread of SARS-CoV-2 to vulnerable cancer
113 patients receiving treatment. Balancing the competing risks of treatment delay or alteration
114 versus infection is essential and depends upon understanding the clinical profile of COVID-19 in
115 this vulnerable population.

116
117 Limited studies describing the impact of COVID-19 both in the United States³ and abroad⁴⁻⁷
118 suggest a higher risk of hospitalization and poor outcomes including death in certain subsets of
119 cancer patients. The effect of COVID-19 on patients with MM, the second most common
120 hematological malignancy, is of particularly great concern due to immunosuppression
121 associated with the disease, and at this time remains incompletely understood. MM is a plasma
122 cell malignancy, diagnosed at a median age around 70 years in patients often with multiple
123 comorbidities⁸. MM is associated with both cellular and humoral immune dysfunction and
124 causes a state of generalized immune suppression, leaving patients especially vulnerable to
125 infections^{9,10}.

126

127 In contrast to the reported immunosuppressive nature of MM, COVID-19 infection has
128 demonstrated propensity for triggering an uncontrolled immune inflammatory cascade¹¹⁻¹³ that
129 bears resemblance to cytokine release syndrome (CRS) seen in patients treated with chimeric
130 antigen receptor (CAR) T cells and bispecific antibodies^{14,15}. Inflammatory markers and
131 cytokines, including C-reactive protein (CRP), ferritin, interleukin (IL)-6, have been significantly
132 elevated in multiple cohorts of patients infected with COVID-19¹⁶⁻¹⁹.

133
134 We aimed to characterize the population of MM patients at our institution who developed
135 COVID-19 in the epicenter of the pandemic in the United States. To address this, we
136 retrospectively analyzed a cohort of 58 MM and smoldering MM (SMM) patients treated at the
137 Mount Sinai Hospital who were diagnosed with COVID-19 between March 1 and April 30, 2020.
138 We have identified several demographic characteristics and comorbidities associated with
139 hospitalization and elevation of certain inflammatory markers associated with increased
140 mortality as described below.

141
142 **Methods**

143 **Study design, inclusion criteria and data collection**

144 The study was designed from a register of patients with SMM and MM in any phase of
145 response, currently receiving treatment or follow-up at the Mount Sinai Hospital. All patients with
146 a confirmed or presumptive diagnosis of COVID-19 between March 1, 2020 and April 30, 2020
147 were considered potentially relevant. Infection with SARS-CoV-2 was confirmed by Roche
148 Cobas 6800 polymerase chain reaction (PCR) in patients that were treated at the Mount Sinai
149 Hospital. For patients admitted to other hospital systems, inclusion was based on external
150 reporting and follow up testing confirmation. Similarly, outpatients that reported a positive
151 COVID-19 test to our clinic (e.g. over the phone) were included in the analysis, awaiting
152 collection of their formal test results. Anti-SARS-CoV-2 antibody testing was performed using an

153 anti-IgG assay developed at Mount Sinai Health System Department of Pathology in
154 collaboration with the Icahn School of Medicine at Mount Sinai Department of Microbiology
155 under a Food and Drug Administration (FDA) Emergency Use Authorization. We reviewed
156 clinical charts, nursing records, laboratory findings and radiological images for patients and
157 obtained demographic data from the electronic medical records. Plasma levels of selected
158 inflammatory cytokines, including IL-1 β , IL-6, IL-8 and tumor necrosis factor- α (TNF- α), were
159 assessed using the ELLA rapid detection enzyme-linked immunosorbent assay (ELISA)
160 microfluidics platform and made available through the Mount Sinai data warehouse for
161 hospitalized patients. Treatment response criteria were used as defined by the International
162 Myeloma Working Group (IMWG)^{20,21}. This retrospective study was approved by the institutional
163 review board (IRB) of the Mount Sinai Hospital and is in compliance with the Declaration of
164 Helsinki and International Conference on Harmonization Guidelines for Good Clinical Practice
165 (IRB: GCO#: 11-1433).

166

167 **Statistical analysis**

168 Continuous variables are presented as a median and interquartile range (IQR). Categorical
169 variables are shown as percentage and absolute number of patients. Wherever two outcome
170 groups are compared, Fisher's exact test was used to determine significance and odds ratios
171 (ORs) were reported for categorical variables and Mann-Whitney U test was used to determine
172 significance for continuous variables. A two-sided alpha < 0.05 was considered statistically
173 significant. All statistical analyses were done using R (version 3.6.1).

174

175 **Data availability**

176 The datasets analyzed during the current study are not publicly available due to United States
177 Federal Health Insurance Portability and Accountability Act (HIPAA) compliance, but a de-
178 identified dataset may be available from the corresponding author on reasonable request.

179

180 **Results**

181 **Baseline characteristics**

182 Our cohort of 58 patients encompassed 52% males and had a median age of 67 years (IQR:
183 12.5 years), with 17% of patients older than 75 years (**Table 1**). The median body mass index
184 (BMI) was 27.6 kg/m² (with 37% of patients with a BMI > 30 kg/m²). The majority of patients
185 reported being non-white (63%), with 13 (23%) patients of African American and 9 (16%) of
186 Hispanic origin.

187

188 The most common comorbidities were hypertension (64%), hyperlipidemia (62%), previous or
189 active smoking (37%), diabetes mellitus type 2 (28%), chronic kidney disease (CKD, estimated
190 glomerular filtration rate (eGFR) <60 mL/min) (24%) and lung disease (21%), including asthma
191 or chronic obstructive lung disease (COPD). Thirty-two patients (55%) had a high-risk
192 cardiovascular profile (defined as having ≥2 of the conditions: hypertension, hyperlipidemia and
193 diabetes) and 13 (22%) had coronary artery disease (CAD) and/or cerebrovascular disease.
194 Seven (12%) patients had congestive heart failure. Twelve (21%) patients were on therapeutic
195 anticoagulation and 34 (59%) were on aspirin, while 26 (45%) patients were on an angiotensin-
196 converting-enzyme (ACE) inhibitor or angiotensin II receptor blocker (ARB).

197

198 **Myeloma characteristics**

199 The cohort included 54 MM and 4 SMM patients (**Table 2**). The median time from diagnosis to
200 COVID-19 infection was 29.8 months (IQR: 44.2 months). MM patients had a median of 1.5
201 (IQR: 2) lines of therapy and 9 (17%) patients had more than 4 previous lines of treatment.

202 Twenty-two (41%) patients had a prior autologous stem cell transplant (ASCT). The median age
203 of patients with and without prior ASCT was 63.5 and 70 years, respectively. Of all patients, 27
204 (47%) had an Eastern Cooperative Oncology Group (ECOG) performance status of 0 at the
205 time of COVID-19 infection. The most common myeloma subtype was IgG (59%) followed by
206 IgA (19%), with light chain involvement in 33% of cases. High-risk cytogenetics were present in
207 22 (39%) patients, with 18 (33%) patients having an international staging system (ISS) of 1,
208 while 14 (26%) and 10 (19%) patients had ISS 2 and 3, respectively, at time of MM diagnosis.
209 At time of SARS-CoV-2 infection, 3 SMM and 8 MM patients were not on therapy. Among the
210 remaining patients, 28 (48%) patients were being treated with daratumumab, 32 (55%) patients
211 were on immunomodulatory drugs (IMiDs), 22 (38%) were on a proteasome inhibitor (PI), 5
212 (9%) were on venetoclax, and 30 (52%) patients were on concomitant corticosteroids.

213
214 The disease status at the time of SARS-CoV-2 infection included 15 (26%) patients in complete
215 response (CR) or stringent CR (sCR), 11 (19%), 13 (22%) and 2 (3%) patients who had a very
216 good partial response (VGPR), partial response (PR) and stable disease (SD), respectively, and
217 9 (16%) who had progressive disease (PD). Response status was not evaluable for 8 (14%) of
218 patients (including 4 SMM patients and 1 newly diagnosed patient).

219
220 Biochemical parameters at the last routine clinic visit before presentation with COVID-19 were
221 collected to determine if these steady-state parameters would provide insight into which patients
222 are particularly vulnerable (**Table 2**). Twenty patients (35%) had leukopenia ($<4 \times 10^9/L$) and 7
223 (12%) lymphocytopenia (grade 3, $<0.5 \times 10^9/L$) at their last clinic visit. The monoclonal spike (M-
224 spike) was undetectable in 31 (54%) patients. Median serum IgG level of all patients was 805
225 mg/dL (IQR: 736 mg/dL) and 37% (21/57) of patients had hypogammaglobulinemia (< 700
226 mg/dL), while 11% (6/57) of patients had severe (< 400 mg/dL) hypogammaglobulinemia.

227 Immunoparesis, defined as a reduction in one or more of the uninvolved immunoglobulins below
228 the lower limit of normal²², was present in 89% (51/57) of patients.

229

230 **Clinical course and biochemical parameters**

231 The most common reported symptoms among all patients were fever (70%), cough (65%), and
232 dyspnea (45%). Thirty-six patients were admitted at a hospital for inpatient care, 23 of which
233 were admitted at our healthcare system and had both clinical and biochemical parameters
234 available, as shown in **Table 3**. The median time between self-reported symptom onset and
235 admission was 3 days. Among the 23 patients, 16 (70%) were febrile, and 11 (48%) were
236 tachycardic with a heart rate >100 beats per minute (bpm) at time of presentation. Ten (43%)
237 patients required immediate oxygen support: 7 needed a nasal cannula or non-rebreather mask,
238 1 needed high flow oxygen and 2 were immediately intubated and required mechanical
239 ventilation.

240

241 During their hospital stay, 22 (95%) patients developed fever, 18 (78%) tachycardia (>100 bpm)
242 and 18 (78%) hypoxemia (SpO₂ < 93%). Five (22%) patients never required supplemental
243 oxygen and 10 (40%) needed a nasal cannula or non-rebreather mask at some point during
244 hospitalization. Four (17%) patients were treated with high-flow oxygen, continuous positive
245 airway pressure (CPAP) or bi-level positive airway pressure (BiPAP) machines and five (22%)
246 were eventually intubated. Seven (30%) patients required intensive care unit (ICU) care during
247 their hospitalization. The median length of stay was 22 days. Of the 23 patients admitted to our
248 hospital with COVID-19, seven (30%) died. When we consider the total hospitalized cohort (36
249 patients, i.e. including patients admitted at other hospitals), the mortality rate was 39% (14
250 patients). All 14 deaths were due to COVID-19. There were no deaths reported in patients who
251 were not hospitalized among the total cohort.

252

253 Patients presented with multiple elevated inflammatory markers, including CRP (median: 89
254 mg/L), ferritin (median: 595 µg/L), IL-6 (median: 82.4 pg/mL), whereas procalcitonin was normal
255 (median: 0.2 ng/mL). Leukocytes were not elevated (median: $4.3 \times 10^9/L$) and the absolute
256 lymphocyte count was low (median $0.6 \times 10^9/L$) whereas absolute neutrophil count was within
257 normal range (median $3.6 \times 10^9/L$). On initial presentation, lactate dehydrogenase (LDH,
258 median 249.5 U/L), fibrinogen (median 600 mg/dL) and D-dimer (median 1.2 mg/L) were
259 elevated but transaminases were normal (median aspartate aminotransferase (AST) and
260 alanine aminotransferase (ALT): 24 U/L and 20 U/L, respectively). Peak levels for these
261 markers are shown in **Table 3** and temporal trends for a subset of patients are illustrated in
262 **Supplementary Figure S1**. CRP and ferritin peaked early (within the first 10 days of
263 hospitalization) and subsequently demonstrated a downward trend over time, with a slower
264 decline in ferritin levels notable in patients that eventually died. D-dimer level was transiently
265 elevated in some patients but was persistently and progressively elevated in all patients that
266 eventually died. The inflammatory cytokines IL-1 β , IL-6, IL-8 and TNF- α , were assessed over
267 the duration of hospitalization at the discretion of the treating physician. Peak levels for IL-6, IL-
268 8 and TNF- α were elevated (median: 128.5 pg/mL, 65.4 pg/mL and 28.7 pg/mL, respectively)
269 and levels for IL-1 β were generally low (median: 0.5pg/mL).

270

271 We describe COVID-19 management comprehensively for the 23 patients hospitalized at our
272 center and their outcome (**Table 3**). One (4%) patient received remdesivir, 17 (74%) patients
273 received hydroxychloroquine and 17 (74%) patients received azithromycin. Nineteen (82%)
274 patients were treated with other antibiotics, most commonly a beta-lactam antibiotic \pm
275 vancomycin (n = 16) for presumed bacterial superinfection. Six (26%) patients received
276 granulocyte colony stimulating factor (G-CSF) and 18 (78%) patients received therapeutic
277 anticoagulation, 13 of which had not been on full anticoagulation before COVID-19. Patients
278 were treated with a direct oral anticoagulant (DOAC, n = 3), therapeutic doses of enoxaparin (n

279 = 8) or a heparin drip (n = 2). There were no major bleeding events. Ten (43%) patients were
280 given systemic corticosteroids. One (4%) patient was treated with convalescent plasma. Anti-
281 TNF α , anti-IL-6 and anti-IL-1 therapy was initiated in 1 (4%), 4 (17%) and 2 (9%) patients,
282 respectively. Five patients (22%) were given low dose selinexor, a selective inhibitor of nuclear
283 export, for its presumed activity against virus host protein interaction²³ and to counter
284 amplification of pro-inflammatory signaling²⁴.

285

286 **Antibody serology and repeat PCR testing**

287 We collected data on antibody testing and follow up PCR testing for patients. As of May 28,
288 2020, 96% (22/23) of patients have developed antibodies against SARS-CoV-2 at a median
289 time of 32 (range 6-50) days since COVID-19 diagnosis. Titers ranged from 1:160 to 1:2880,
290 with 74% (17/23) exhibiting the most significant titer level of 1:2880, 9% (2/23) with 1:960, 9%
291 (2/23) with 1:320, and 4% (1/23) with 1:160. Antibody titer did not correlate with COVID-19
292 severity, yet we observed that all 5 MM patients with low titers (< 1:2880) had
293 hypogammaglobulinemia. The one patient who did not develop any antibodies had SMM and
294 was tested 27 days after initial diagnosis. So far, 27 patients have undergone repeat PCR
295 testing; 74% (20/27) are negative and median time to PCR negativity was 43 (range 19-68)
296 days from initial positive PCR. Among the 22 patients with positive antibody titers, 19 patients
297 had repeat PCR swab and 3 remained positive while 16 were negative.

298

299 **Clinical associations**

300 In a univariate analysis on all patients, we found that the following variables were significantly
301 associated with hospitalization, as shown in **Table 4**: age over 70 (OR 7.74, p = 0.007), male
302 sex (OR 3.70, p = 0.030), diabetes mellitus type 2 (OR 6.18, p = 0.016), high cardiovascular risk
303 profile (OR 3.42, p = 0.032), history of CAD (OR ∞ , p = 0.009), history of CHF (OR ∞ , p =
304 0.037), use of statins (OR = 12.10, p < 0.001) and use of beta blockers (OR 9.63, p = 0.002).

305 We also noted significant associations between hospitalization status and grade 3
306 lymphocytopenia (OR ∞ , $p = 0.036$) at the last clinic visit prior to COVID-19 infection. Patients
307 who had not achieved complete remission or stringent complete remission were at increased
308 risk of hospitalization ($p = 0.013$).

309

310 Similarly, for hospitalized patients, using a univariate approach, we found statistically significant
311 association between mortality and these variables: non-white race (OR 10.49, $p = 0.011$), statin
312 use (OR 6.21, $p = 0.012$), severe hypogammaglobulinemia (OR 7.80, $p = 0.027$), and higher
313 peak levels of D-dimer ($p = 0.004$), ferritin ($p = 0.007$), procalcitonin ($p = 0.010$), and CRP ($p =$
314 0.019). The full list of associations is shown in **Table 4**.

315

316 **Discussion**

317 Situated in the heart of New York City, our cancer center at Mount Sinai Hospital bore witness
318 to the immense disruption of healthcare caused by COVID-19. During the initial phase of the
319 pandemic, the goal was to keep patients at home following federal and state guidelines of
320 isolation, social distancing, and strict hand hygiene²⁵⁻²⁷. Patients were switched to all oral
321 regimens if possible or had delayed therapy depending on perceived risk of need for therapy to
322 control myeloma versus exposure to SARS-CoV-2. Yet community transmission of SARS-CoV-
323 2 during the pandemic was inevitable.

324

325 There were no deaths among myeloma patients with milder symptoms who were managed
326 entirely as outpatients with COVID-19 in this cohort. The mortality rates of the overall cohort (n
327 $= 58$), MM patients admitted to Mount Sinai Hospital ($n = 23$), and all admitted MM patients ($n =$
328 36) were 24%, 30%, and 39% respectively. These figures are in line with the overall mortality
329 seen in New York, where the estimated mortality among hospitalized patients over 45 years old

330 is 37% as of May 25, 2020^{1,28}. Interestingly the mortality among our cohort of MM patients was
331 lower than the 54.6% seen in a mixed cohort of MM patients treated in Britain²⁹. We
332 acknowledge that the apparent mortality differences between different countries and health
333 systems may be affected by the local epidemiology, hospitalization and resource utilization rates
334 and potential differences in escalation of care. However, in both of these populations, there
335 appeared to be a trend toward increased mortality in patients of non-white/Caucasian
336 background. This has been consistently seen in the United States, where death rates for
337 COVID-19 are several fold higher in patients of Black and Hispanic origins³⁰⁻³².

338
339 MM specific disease characteristics and the type of MM treatment were not associated with
340 increased mortality. In contrast, we observed that age and cardiovascular risk factors (diabetes,
341 CAD, CHF) were significantly associated with patient hospitalization for COVID-19. The data
342 from our cohort showed that non-white background, severe (< 400 mg/dL)
343 hypogammaglobulinemia, and statin use were significantly associated with mortality. This
344 information would indicate that during the post pandemic phase, we do not have to change the
345 management of myeloma patients. However, earlier diagnosis of COVID-19 and prompt
346 intervention especially for the vulnerable population identified above is warranted to reduce the
347 risk of mortality. As we reopen and move forward into a post-COVID-19 era, we will need to
348 remain vigilant, particularly for select patient groups, and await effective COVID-19 treatments
349 while balancing the need to manage patients' myeloma.

350
351 We were able to capture the evolution of inflammatory markers for patients who were admitted
352 to the inpatient service and we found a significant association with mortality in patients who had
353 elevated D-dimer, CRP, or ferritin. Many COVID-19 patients treated at our institution also
354 received a rapid panel for cytokine testing as part of a larger study to characterize the
355 inflammatory profile of COVID-19 illness. Among our cohort of hospitalized patients, those who

356 died appeared to exhibit rather elevated pro-inflammatory cytokines, consistent in principle with
357 what was seen in a large COVID-19 cohort analyzed at the Mount Sinai Health System³³. It is
358 possible that a CRS-like syndrome, similar though not identical to one seen in MM patients
359 treated with CAR-T^{14,34} and bispecific antibodies^{35,36}, occurs in a significant portion of MM
360 patients afflicted with COVID-19. Various agents including but not limited to anti-IL-6³⁹
361 monoclonal antibodies and JAK inhibitors⁴⁰ are presently under investigation to address
362 potential components of immune dysregulation in COVID-19. We noted that patients who died
363 from COVID-19 had alarmingly elevated D-dimer levels compared to survivors (median of 18.24
364 mg/L vs 1.96 mg/L). Emerging research suggests that the overwhelming immune activation
365 during SARS-CoV-2 infection is a potent catalyst for significant arterial and venous
366 thromboembolism leading to strokes and pulmonary emboli^{16,37}, and serum pro-inflammatory
367 cytokines including IL-1 β , TNF- α , and IL-6 have been tied to endothelial damage underlying
368 thrombus formation seen in COVID-19³⁸. To counter this possibility, a large majority of patients
369 admitted to our institution in this cohort received therapeutic anticoagulation and none suffered
370 bleeding events. Our data regarding inflammatory markers raises the question if the process
371 driving severe D-dimer elevation in MM patients with COVID-19 is the same or is separate from
372 the CRS-like process seen in many COVID-19 patients.

373
374 Data on the persistence of SARS-CoV-2 by PCR and development of specific antibody
375 response to the virus in potentially immunocompromised cancer patients have thus far been
376 lacking. A significant majority of tested patients among this cohort cleared infection by PCR and
377 developed antibodies despite a very high proportion of patients who fit the definition of classical
378 myeloma-associated immunoparesis. Immunoparesis alone was not significantly associated
379 with hospitalization or mortality and importantly did not appear to affect the development of anti-
380 SARS-CoV-2 antibodies. Looking forward, we will need to determine if development of
381 antibodies confers protection against reinfection.

382

383 This study has the limitations of single institution, retrospective reporting of a smaller cohort of
384 patients. Serological data were not available for a minority of the patients who were hospitalized
385 at outside institutions. The observations reported here have to be confirmed by a larger series of
386 data collected from multiple institutions and such efforts are underway. Few patients received
387 COVID-19 directed treatment on clinical trials. The role of recently emergency approved anti-
388 viral agent remdesivir or convalescent plasma should be explored in the high-risk population
389 with myeloma.

390

391 **Conclusions**

392 In this study of patients treated for myeloma at the Mount Sinai Hospital, we provide
393 a detailed analysis of a cohort of 58 MM and SMM patients who developed COVID-19. Although
394 several demographic factors and comorbidities increased risk of hospitalization and mortality,
395 myeloma therapy and immunoparesis did not influence outcomes. In fact, survival was
396 comparable to the overall population of New York during the pandemic, and patients generally
397 mounted a significant antibody response to SARS-CoV-2. The data herein supports the need to
398 maintain proactive management of MM patients by balancing their need for therapy with the
399 increased risk of hospitalization and death in a subset of MM patients with COVID-19.

400

401

402

403

404

405

406

407

408

409 **Abbreviations**

410 ACE: angiotensin-converting-enzyme; ALT: alanine aminotransferase; ARB: angiotensin
411 II receptor blocker; ASCT: autologous stem cell transplant; AST: aspartate
412 aminotransferase; BiPAP: bi-level positive airway pressure; BMI: body mass index;
413 bpm: beats per minute; CAD: coronary artery disease; CAR: chimeric antigen receptor;
414 CHF: congestive heart failure; CKD: chronic kidney disease; COPD: chronic obstructive
415 lung disease; COVID-19: coronavirus disease 2019; CPAP: continuous positive airway
416 pressure; CR: complete response; CRS: cytokine release syndrome; CRP: C-reactive
417 protein; DOAC: direct oral anticoagulant; ECOG: Eastern Cooperative Oncology Group;
418 eGFR: estimated glomerular filtration rate; ELISA: enzyme-linked immunosorbent
419 assay; G-CSF: granulocyte colony stimulating factor; HIPAA: Health Insurance
420 Portability and Accountability Act; IMWG: International Myeloma Working Group; ICU:
421 intensive care unit; IL: interleukin; IMiD: immunomodulatory drug; IRB: institutional
422 review board; IQR: interquartile range; ISS: international staging system; LDH: lactate
423 dehydrogenase; MM: Multiple myeloma; OR: odd's ratio; PCR: polymerase chain
424 reaction; PD: progressive disease; PI: proteasome inhibitor; PR: partial response;

425 SARS-CoV-2: Severe Acute Respiratory Syndrome Coronavirus 2; sCR: stringent
426 complete response; SD: stable disease; SMM: smoldering multiple myeloma; TNF- α :
427 tumor necrosis factor- α ; VGPR: very good partial response.

428

429 **Author Contributions**

430 Conceptualization, BW, OVO, THM, SJ, SP, and DM; Methodology, OVO; Investigation, BW,
431 OVO, THM, DV and SG; Writing – Original Draft, BW, OVO, THM; Writing – Review & Editing,
432 all authors; Funding Acquisition, SJ.; Resources, MM, SJ, SP and DM; Supervision, MM, SJ, SP
433 and DM.

434

435 **Conflict of Interest:**

436 A.C.: Advisory board and consulting fees from Amgen, Antegene, Celgene, Janssen,
437 Karyopharm, Millennium/Takeda, Novartis Pharmaceuticals, Oncopeptides, Sanofi; research
438 funding from Amgen, Celgene, Janssen, Millennium/Takeda, Novartis Pharmaceuticals,
439 Pharmacyclics. S. J.: Advisory board and consulting fees from Celgene, Bristol-Myers Squibb,
440 Janssen Pharmaceuticals and Merck. H. J. C: Employed by the Multiple Myeloma Research
441 Foundation, advisory board and consulting fees from Genetech, Celgene, Bristol Myers Squibb,
442 GlaxoSmithKline and received research funding from Takeda, Celgene, and Genetech. D. M.:
443 Advisory board and consulting fees from Janssen, Celgene, Bristol Myers Squibb, Takeda,
444 Legend, GlaxoSmithKline, Kinevant, and Foundation Medicine. B.W.: Consulting fees from
445 Sanofi Genzyme. J. R.: Speaking fees from Celgene and Janssen, advisory board and
446 consulting fees from Celgene, Janssen, Bristol Myers Squibb, Oncopeptides, Adaptive
447 Biotechnologies, X4 Pharmaceuticals, Karyopharm, and Antegene. S. P.: Consulting fees from
448 Foundation Medicine, research funding from Celgene and Karyopharm. Supported by
449 1R01CA244899-01A1.

450

451 All other authors declare no potential conflict of interest.

452

453 **Acknowledgements**

454 We would like to acknowledge all the staff and families for the selfless efforts in caring for
455 patients who developed COVID-19, and the strength and courage of all patients affected by the
456 pandemic.

457

458 **Funding**

459 There is no outside funding declared for this study.

460 References

- 461 1. Richardson S, Hirsch JS, Narasimhan M, et al. Presenting Characteristics, Comorbidities, and
462 Outcomes Among 5700 Patients Hospitalized With COVID-19 in the New York City Area. *JAMA* 2020.
- 463 2. <https://covid19tracker.health.ny.gov/>
- 464 3. Robilotti EV, Babady NE, Mead PA, et al. Determinants of Severity in Cancer Patients with
465 COVID-19 Illness. *medRxiv* 2020:2020.05.04.20086322.
- 466 4. Dai M, Liu D, Liu M, et al. Patients with Cancer Appear More Vulnerable to SARS-COV-2: A
467 Multicenter Study during the COVID-19 Outbreak. *Cancer Discov* 2020.
- 468 5. Liang W, Guan W, Chen R, et al. Cancer patients in SARS-CoV-2 infection: a nationwide analysis
469 in China. *Lancet Oncol* 2020;21:335-7.
- 470 6. Yu J, Ouyang W, Chua MLK, Xie C. SARS-CoV-2 Transmission in Patients With Cancer at a Tertiary
471 Care Hospital in Wuhan, China. *JAMA Oncology* 2020.
- 472 7. Zhang L, Zhu F, Xie L, et al. Clinical characteristics of COVID-19-infected cancer patients: a
473 retrospective case study in three hospitals within Wuhan, China. *Ann Oncol* 2020.
- 474 8. Kyle RA, Rajkumar SV. Multiple myeloma. *Blood* 2008;111:2962-72.
- 475 9. Lee SJ, Borrello I. Role of the Immune Response in Disease Progression and Therapy in Multiple
476 Myeloma. *Cancer Treat Res* 2016;169:207-25.
- 477 10. Kumar SK, Anderson KC. Immune Therapies in Multiple Myeloma. *Clinical Cancer Research*
478 2016;22:5453-60.
- 479 11. Ingraham NE, Lotfi-Emran S, Thielen BK, et al. Immunomodulation in COVID-19. *The Lancet*
480 *Respiratory Medicine*.
- 481 12. Mehta P, McAuley DF, Brown M, et al. COVID-19: consider cytokine storm syndromes and
482 immunosuppression. *Lancet* 2020.
- 483 13. Merad M, Martin JC. Pathological inflammation in patients with COVID-19: a key role for
484 monocytes and macrophages. *Nature Reviews Immunology* 2020.
- 485 14. Liu D, Zhao J. Cytokine release syndrome: grading, modeling, and new therapy. *Journal of*
486 *Hematology & Oncology* 2018;11:121.
- 487 15. Lee DW, Santomaso BD, Locke FL, et al. ASTCT Consensus Grading for Cytokine Release
488 Syndrome and Neurologic Toxicity Associated with Immune Effector Cells. *Biol Blood Marrow Transplant*
489 2019;25:625-38.
- 490 16. Zhang C, Wu Z, Li J-W, Zhao H, Wang G-Q. The cytokine release syndrome (CRS) of severe
491 COVID-19 and Interleukin-6 receptor (IL-6R) antagonist Tocilizumab may be the key to reduce the
492 mortality. *International Journal of Antimicrobial Agents* 2020:105954.
- 493 17. Mehta P, McAuley DF, Brown M, Sanchez E, Tattersall RS, Manson JJ. COVID-19: consider
494 cytokine storm syndromes and immunosuppression. *Lancet (London, England)* 2020;395:1033-4.
- 495 18. Huang C, Wang Y, Li X, et al. Clinical features of patients infected with 2019 novel coronavirus in
496 Wuhan, China. *Lancet (London, England)* 2020;395:497-506.
- 497 19. Gong J, Dong H, Xia SQ, et al. Correlation Analysis Between Disease Severity and Inflammation-
498 related Parameters in Patients with COVID-19 Pneumonia. *medRxiv* 2020:2020.02.25.20025643.
- 499 20. Rajkumar SV, Dimopoulos MA, Palumbo A, et al. International Myeloma Working Group updated
500 criteria for the diagnosis of multiple myeloma. *The Lancet Oncology* 2014;15:e538-48.
- 501 21. Kumar S, Paiva B, Anderson KC, et al. International Myeloma Working Group consensus criteria
502 for response and minimal residual disease assessment in multiple myeloma. *The Lancet Oncology*
503 2016;17:e328-e46.
- 504 22. Sørrig R, Klausen TW, Salomo M, et al. Smoldering multiple myeloma risk factors for
505 progression: a Danish population-based cohort study. *European Journal of Haematology* 2016;97:303-9.

- 506 23. Widman DG, Gornisiewicz S, Shacham S, Tamir S. In vitro toxicity and efficacy of verdinexor, an
507 exportin 1 inhibitor, on opportunistic viruses affecting immunocompromised individuals. *PloS one*
508 2018;13:e0200043.
- 509 24. Wu M, Gui H, Feng Z, et al. KPT-330, a potent and selective CRM1 inhibitor, exhibits anti-
510 inflammation effects and protection against sepsis. *Biochemical and biophysical research*
511 *communications* 2018;503:1773-9.
- 512 25. Al Saleh AS, Sher T, Gertz MA. Multiple Myeloma in the Time of COVID-19. *Acta haematologica*
513 2020:1-7.
- 514 26. Society IM. Recommendations for the Management of Myeloma Patients During the COVID-19
515 Pandemic. 2020.
- 516 27. Malard F, Mohty M. Management of patients with multiple myeloma during the COVID-19
517 pandemic. *The Lancet Haematology* 2020.
- 518 28. COVID-19: Data. 2020. at <https://www1.nyc.gov/site/doh/covid/covid-19-data.page>.)
- 519 29. Cook G, Ashcroft AJ, Pratt G, et al. Real-world assessment of the clinical impact of symptomatic
520 infection with severe acute respiratory syndrome coronavirus (COVID-19 disease) in patients with
521 Multiple Myeloma receiving systemic anti-cancer therapy. *British Journal of Haematology*;n/a.
- 522 30. Gross CP, Essien UR, Pasha S, Gross JR, Wang S-y, Nunez-Smith M. Racial and Ethnic Disparities
523 in Population Level Covid-19 Mortality. *medRxiv* 2020:2020.05.07.20094250.
- 524 31. Henning-Smith C, Tuttle M, Kozhimannil KB. Unequal Distribution of COVID-19 Risk among Rural
525 Residents by Race and Ethnicity. *The Journal of rural health : official journal of the American Rural*
526 *Health Association and the National Rural Health Care Association* 2020.
- 527 32. Howard G, Safford MM, Moy CS, et al. Racial Differences in the Incidence of Cardiovascular Risk
528 Factors in Older Black and White Adults. *Journal of the American Geriatrics Society* 2017;65:83-90.
- 529 33. Diane Marie Del Valle M, Seunghye Kim-Schulze PD, Hsin-Hui Huang PD, et al. An inflammatory
530 cytokine signature helps predict COVID-19 severity and death. *MEDRXIV* 2020;115758.
- 531 34. Jatiani SS, Aleman A, Madduri D, et al. Myeloma CAR-T CRS Management with IL-1R Antagonist
532 Anakinra. *Clinical Lymphoma Myeloma and Leukemia* 2020.
- 533 35. Dai H, Wu Z, Jia H, et al. Bispecific CAR-T cells targeting both CD19 and CD22 for therapy of
534 adults with relapsed or refractory B cell acute lymphoblastic leukemia. *Journal of Hematology &*
535 *Oncology* 2020;13:30.
- 536 36. Costa LJ WS, Bermúdez A. First clinical study of the B-cell maturation antigen (BCMA) 2+1 T cell
537 engager (TCE) CC-93269 in patients (pts) with relapsed/refractory multiple myeloma (RRMM): interim
538 results of a phase 1 multicenter trial. Abstract #143. *American Society of Hematology. Orlando, FL: ASH*
539 *Annual Meeting Proceedings*; 2019.
- 540 37. Tseng C-TK, Perrone LA, Zhu H, Makino S, Peters CJ. Severe Acute Respiratory Syndrome and the
541 Innate Immune Responses: Modulation of Effector Cell Function without Productive Infection. *The*
542 *Journal of Immunology* 2005;174:7977-85.
- 543 38. Bryce C, Grimes Z, Pujadas E, et al. Pathophysiology of SARS-CoV-2: targeting of endothelial cells
544 renders a complex disease with thrombotic microangiopathy and aberrant immune response. *The*
545 *Mount Sinai COVID-19 autopsy experience. medRxiv* 2020:2020.05.18.20099960.
- 546 39. Xu X, Han M, Li T, et al. Effective treatment of severe COVID-19 patients with tocilizumab.
547 *Proceedings of the National Academy of Sciences* 2020;117:10970-5.
- 548 40. Cao Y, Wei J, Zou L, et al. Ruxolitinib in treatment of severe coronavirus disease 2019 (COVID-
549 19): A multicenter, single-blind, randomized controlled trial. *Journal of Allergy and Clinical Immunology*
550 2020.

552 **Tables**

553 **Table 1: Demographics and baseline characteristics of patients**

	All patients n = 58		Patients not admitted to hospital n = 22		Hospitalized, discharged alive n = 22		Hospitalized, deceased n = 14	
Demographics								
Age (years)	67	[12.5]	64	[11.5]	71	[18.5]	68	[8]
Sex (male)	52%	(30)	32%	(7)	68%	(15)	57%	(8)
Race (non-white)	63%	(36/57)	55%	(12)	55%	(12/22)	92%	(12)
BMI (kg/m ²)	27.6	[7.9]	26.1	[5.3]	28.2	[10.2]	29.5	[9.9]
Obesity (BMI > 30 kg/m ²)	37%	(21/57)	27%	(6)	38%	(8/21)	50%	(7)
Comorbidities								
High cardiovascular risk profile (≥2 of hypertension, hyperlipidemia, diabetes)	55%	(32)	36%	(8)	64%	(14)	71%	(10)
Hypertension	64%	(37)	59%	(13)	59%	(13)	79%	(11)
Hyperlipidemia	62%	(36)	50%	(11)	59%	(13)	86%	(12)
Diabetes	28%	(16)	9%	(2)	45%	(10)	29%	(4)
Previous atherosclerotic complications (CAD and/or CVA)	22%	(13)	0%	(0)	36%	(8)	36%	(5)
Congestive heart failure	12%	(7)	0%	(0)	14%	(3)	29%	(4)
Current or former smoker	37%	(21/57)	27%	(6)	38%	(8/21)	50%	(7)
Lung disease (COPD, emphysema, asthma, bronchiectasis)	21%	(12)	18%	(4)	27%	(6)	14%	(2)
Chronic kidney disease (eGFR < 60 mL/min)	24%	(14)	23%	(5)	27%	(6)	21%	(3)
History of other malignancy	9%	(5)	5%	(1)	5%	(1)	21%	(3)
Number of comorbidities	2	[3]	1	[1.75]	3	[3]	3.5	[1.75]
Concomitant medication								
Anticoagulation	21%	(12)	9%	(2)	27%	(6)	29%	(4)
Aspirin	59%	(34)	59%	(13)	59%	(13)	57%	(8)
Statin	47%	(27)	14%	(3)	59%	(13)	79%	(11)
ACE inhibitor or angiotensin II receptor blocker	45%	(26)	36%	(8)	41%	(9)	64%	(9)
Beta blocker	34%	(20)	9%	(2)	50%	(11)	50%	(7)
Metformin	16%	(9)	5%	(1)	32%	(7)	7%	(1)
Non-steroidal anti-inflammatory drug	5%	(3)	5%	(1)	5%	(1)	7%	(1)
Oral corticosteroids	53%	(31)	45%	(10)	50%	(11)	71%	(10)
COVID-19 confirmed by PCR at MSH	71%	(41)	59%	(13)	86%	(19)	64%	(9)

Note: values are presented as percentage (n) or median [interquartile range].

Abbreviations: BMI, body mass index; CAD, coronary artery disease; CVA, cerebrovascular accident; COPD, chronic obstructive pulmonary disease; eGFR, estimated glomerular filtration rate; ACE, angiotensin converting enzyme; NSAID, non-steroidal anti-inflammatory drug; MSH, Mount Sinai Hospital

554

555

556 **Table 2: Myeloma disease characteristics of patients**

	All patients n = 58		Patients not admitted to hospital n = 22		Hospitalized, discharged alive n = 22		Hospitalized, deceased n = 14	
Disease characteristics								
SMM	7%	(4)	9%	(2)	5%	(1)	7%	(1)
SMM/MM subtype								
IgD	2%	(1)	5%	(1)	0%	(0)	0%	(0)
IgG	59%	(34)	59%	(13)	64%	(14)	50%	(7)
IgA	19%	(11)	23%	(5)	14%	(3)	21%	(3)
Light chain disease	33%	(19)	23%	(5)	41%	(9)	36%	(5)
Extramedullary disease history	31%	(18)	36%	(8)	32%	(7)	21%	(3)
ISS at diagnosis								
1	33%	(18/54)	45%	(9/20)	43%	(9/21)	0%	(0/13)
2	26%	(14/54)	25%	(5/20)	33%	(7/21)	15%	(2/13)
3	19%	(10/54)	20%	(4/20)	14%	(3/21)	23%	(3/13)
not known	22%	(12/54)	10%	(2/20)	10%	(2/21)	62%	(8/13)
High risk cytogenetics	39%	(22/56)	33%	(7/21)	41%	(9)	46%	(6/13)
Time since MM diagnosis (months)	29.8	[44.2]	44.8	[38.7]	27.2	[55.8]	28.6	[23.6]
History of ASCT								
Time since ASCT (days)	41%	(22/54)	60%	(12/20)	24%	(5/21)	38%	(5/13)
ASCT within last year	985	[1590]	985	[744]	2148	[2206]	460	[1734]
ASCT within last year	9%	(5/54)	15%	(3/20)	0%	(0/21)	15%	(2/13)
Lines of therapy (n)								
More than 4 lines of treatment	1.5	[2]	2	[2]	2	[3]	1	[1]
More than 4 lines of treatment	17%	(9/54)	20%	(4/20)	19%	(4/21)	8%	(1/13)
ECOG O	47%	(27)	64%	(14)	41%	(9)	29%	(4)
Current response status*								
sCR or CR	26%	(15)	45%	(10)	14%	(3)	14%	(2)
VGPR	19%	(11)	18%	(4)	14%	(3)	29%	(4)
PR	22%	(13)	18%	(4)	23%	(5)	29%	(4)
SD	3%	(2)	5%	(1)	5%	(1)	0%	(0)
PD	16%	(9)	5%	(1)	23%	(5)	21%	(3)
Not evaluable	14%	(8)	9%	(2)	23%	(5)	7%	(1)
Current MM treatment regimen								
Contains CD38 mAb	48%	(28)	50%	(11)	50%	(11)	43%	(6)
Contains IMiD	55%	(32)	55%	(12)	59%	(13)	50%	(7)
Contains proteasome inhibitor	38%	(22)	27%	(6)	41%	(9)	50%	(7)
Contains corticosteroids	52%	(30)	45%	(10)	50%	(11)	64%	(9)
Contains venetoclax	9%	(5)	14%	(3)	9%	(2)	0%	(0)
No active treatment	19%	(11)	18%	(4)	18%	(4)	21%	(3)
Biochemical parameters at last clinic visit before COVID-19 episode								
Leukocyte count (x10e9/L)	4.6	[2.1]	4.1	[2.1]	5.2	[2.4]	4.7	[1.5]
Leukocytopenia (< 4 x 10e9/L)	35%	(20/57)	41%	(9)	33%	(7/21)	29%	(4)
Absolute neutrophil count (x10e9/L)	2.6	[2.2]	2.4	[1]	3.4	[3]	2.4	[1.4]
Neutropenia (< 2 x10e9/L)	26%	(15/57)	32%	(7)	29%	(6/21)	14%	(2)
Absolute lymphocyte count (x10e9/L)	1	[0.8]	1.1	[1.2]	0.8	[0.9]	1.2	[0.5]
Lymphocytopenia (< 0.5 x 10e9/L)	12%	(7/57)	0%	(0)	33%	(7/21)	0%	(0)
Serum free light chain ratio (involved/uninvolved)	2.5	[11.9]	1.6	[3.3]	7.7	[45.5]	1.8	[5.2]
M spike (g/dL)	0	[0.6]	0	[0.2]	0.3	[1.2]	0.1	[0.4]
IgG (mg/dL)	805	[736]	1074.5	[683.8]	764	[1121]	727	[496.8]
Hypogammaglobulinemia (IgG < 700 mg/dL)	37%	(21/57)	32%	(7)	38%	(8/21)	43%	(6)

Severe hypogammaglobulinemia (IgG < 400 mg/dL)	11%	(6/57)	0%	(0)	10%	(2/21)	29%	(4)
Immunoparesis	89%	(51/57)	82%	(18)	95%	(20/21)	93%	(13)

Note: values are presented as percentage (n) or median [interquartile range].

Abbreviations: SMM, smoldering multiple myeloma; Ig, immunoglobulin; ISS, international staging system; MM, multiple myeloma; ASCT, autologous stem cell transplant; ECOG, Eastern Cooperative Oncology Group; sCR, stringent complete response; CR, complete response; VGPR, very good partial response; SD, stable disease; PD, progressive disease; mAb, monoclonal antibody; IMiD, immunomodulatory agent; *according to IMWG criteria

557

558

559

560 **Table 3: Clinical parameters, treatments and outcomes of patients hospitalized**

561 **due to COVID-19 at Mount Sinai Hospital**

<i>Subset of patients treated at Mount Sinai hospital for which full clinical data was available</i>	Hospitalized patients total		Hospitalized patients alive		Hospitalized patients deceased	
	n = 23		n = 16		n = 7	
Clinical presentation						
Fever	70%	(16)	69%	(11)	71%	(5)
Systolic BP < 90 mmHg	9%	(2)	0%	(0)	29%	(2)
MAP < 65 mmHg	9%	(2)	0%	(0)	29%	(2)
Heart rate > 100 bpm	48%	(11)	56%	(9)	29%	(2)
RR > 20/min	26%	(6)	19%	(3)	43%	(3)
Oxygen requirement at presentation						
None	57%	(13)	69%	(11)	29%	(2)
Nasal cannula or NRB mask	30%	(7)	25%	(4)	43%	(3)
High-flow oxygen, CPAP or BiPAP	4%	(1)	0%	(0)	14%	(1)
Mechanical ventilation	9%	(2)	6%	(1)	14%	(1)
Treatment initiated						
Remdesivir	4%	(1)	6%	(1)	0%	(0)
Hydroxychloroquine	74%	(17)	69%	(11)	86%	(6)
Azithromycin	74%	(17)	75%	(12)	71%	(5)
Other antibiotics	83%	(19)	81%	(13)	86%	(6)
G-CSF	26%	(6)	38%	(6)	0%	(0)
Therapeutic anticoagulation	78%	(18)	69%	(11)	100%	(7)
Systemic corticosteroids	43%	(10)	31%	(5)	71%	(5)
Anti-TNF	4%	(1)	0%	(0)	14%	(1)
Anti-IL-1	9%	(2)	0%	(0)	29%	(2)
Anti-IL-6	17%	(4)	13%	(2)	29%	(2)
Selinexor	22%	(5)	25%	(4)	14%	(1)
Convalescent plasma	4%	(1)	6%	(1)	0%	(0)
Complications						
Highest level of oxygen requirement						
None	26%	(6)	31%	(5)	14%	(1)
Nasal cannula or NRB mask	39%	(9)	56%	(9)	0%	(0)
High-flow oxygen, CPAP or BiPAP	13%	(3)	6%	(1)	29%	(2)
Mechanical ventilation	22%	(5)	6%	(1)	57%	(4)
ICU	30%	(7)	6%	(1)	86%	(6)
Acute kidney injury	52%	(12)	38%	(6)	86%	(6)
Shock	30%	(7)	0%	(0)	100%	(7)
Sepsis or HAP/VAP	9%	(2)	6%	(1)	14%	(1)
C. difficile infection	4%	(1)	6%	(1)	0%	(0)
Cardiac complication	30%	(7)	19%	(3)	57%	(4)
Worst biochemical parameters						
CRP	151.5	[178.1]	144.9	[107.7]	294.1	[132.9]
Total leukocyte count (x10e9/L) (lowest)	3.3	[2.6]	2.9	[2.4]	4.3	[8.4]
Absolute lymphocyte count (x10e9/L) (lowest)	0.3	[0.4]	0.4	[0.5]	0.2	[0.2]
Creatinine (mg/dL)	1.6	[2.4]	1.1	[1.4]	2.7	[2]
Procalcitonin (ng/mL)	0.8	[2.1]	0.5	[0.8]	2.7	[9.9]

Ferritin (µg/L)	2537	[2578]	1282	[2170.5]	3409	[2018]
Fibrinogen (mg/dL)	667	[167]	646	[209.5]	673.5	[43.8]
D-dimer (mg/L)	2.5	[14.3]	2	[2.6]	20	[7.6]
LDH (U/L)	531.5	[515.8]	478	[329]	739	[344]
ALT (U/L)	61	[58.5]	43.5	[52.8]	79	[32]
AST (U/L)	78	[62.5]	49.5	[54.3]	101	[51.5]
IL-1β (pg/mL)	0.5	[0.9]	0.5	[0.8]	0.5	[0.9]
IL-6 (pg/mL)	128.5	[211.6]	119.3	[102.4]	296.8	[821.2]
IL-8 (pg/mL)	65.4	[62.3]	46.6	[67.6]	137	[89.6]
TNF-alfa (pg/mL)	28.7	[11]	29.4	[8.4]	21.3	[15.2]

Note: values are presented as percentage (n) or median [interquartile range].

Abbreviations: BP, blood pressure; MAP, mean arterial pressure; SpO₂, oxygen saturation; RR, respiratory rate; NRB, non-rebreather; CPAP, continuous positive airway pressure; BiPAP, bi-level positive airway pressure; G-CSF, granulocyte colony stimulating factor; TNF, tumor necrosis factor; IL, interleukin; ICU, intensive care unit; HAP, hospital-acquired pneumonia; VAP, ventilator-associated pneumonia; CRP, C-reactive protein; LDH, lactate dehydrogenase; ALT, alanine aminotransferase; AST, aspartate aminotransferase

562

563

564 **Table 4: Univariate associations of selected variables with risk of hospitalization**
 565 **and mortality**

	Hospitalized vs non-hospitalized	n = 58	Mortality (dead vs alive)	n = 58
	OR [95% CI] or median NH/H	p value	OR [95% CI] or median dead/alive	p value
Demographics				
Age (> 70 years)	7.74 [1.51 - 78.12]	0.007	1.32 [0.29 - 5.47]	0.744
Sex (male)	3.7 [1.08 - 13.81]	0.030	1.33 [0.34 - 5.48]	0.762
Race (non-white)	1.87 [0.55 - 6.51]	0.275	10.49 [1.35 - 481.76]	0.011
Obesity (BMI ≥ 30 kg/m2)	1.98 [0.56 - 7.72]	0.272	2.04 [0.5 - 8.4]	0.340
Comorbidities				
High cardiovascular risk profile (≥2 of hypertension, hyperlipidemia, diabetes)	3.42 [1.01 - 12.4]	0.032	2.46 [0.59 - 12.43]	0.221
Hypertension	1.38 [0.4 - 4.73]	0.585	2.5 [0.55 - 15.93]	0.220
Hyperlipidemia	2.24 [0.66 - 7.81]	0.170	4.88 [0.92 - 49.98]	0.057
Diabetes	6.18 [1.19 - 62.84]	0.016	1.07 [0.2 - 4.67]	1.000
Coronary artery disease	Inf [1.64 - Inf]	0.009	2.49 [0.43 - 13.07]	0.233
Stroke	∞ [0.58 - ∞]	0.145	2.24 [0.17 - 22.05]	0.585
Congestive heart failure	∞ [0.96 - ∞]	0.037	5.26 [0.76 - 41.93]	0.051
Current or former smoker	1.98 [0.56 - 7.72]	0.272	2.04 [0.5 - 8.4]	0.340
Lung disease (COPD, emphysema, asthma, bronchiectasis)	1.28 [0.29 - 6.69]	1.000	0.57 [0.05 - 3.3]	0.711
Chronic kidney disease (eGFR < 60 mL/min)	1.13 [0.28 - 5.06]	1.000	0.82 [0.12 - 3.97]	1.000
History of other malignancy	2.59 [0.23 - 135.24]	0.640	5.51 [0.56 - 73.43]	0.085
Number of comorbidities	1/3	0.011	2/3.5	0.055
Concomitant medications				
Anticoagulation	3.77 [0.69 - 39.19]	0.108	1.78 [0.32 - 8.51]	0.457
ACE inhibitor or angiotensin II receptor blocker	1.73 [0.52 - 6.06]	0.416	2.81 [0.7 - 12.6]	0.126
Beta blocker	9.63 [1.89 - 97.14]	0.002	2.35 [0.58 - 9.72]	0.203
Metformin	5.85 [0.69 - 278.29]	0.133	0.35 [0.01 - 3.08]	0.431
Statin	12.06 [2.78 - 76.13]	<0.001	6.21 [1.37 - 39.77]	0.012
Aspirin	0.97 [0.28 - 3.23]	1.000	0.92 [0.23 - 3.83]	1.000
NSAID	1.23 [0.06 - 76.27]	1.000	1.6 [0.03 - 33.14]	1.000
Oral corticosteroids	1.66 [0.51 - 5.61]	0.420	2.69 [0.65 - 13.59]	0.139
Disease characteristics				
Light chain disease	2.09 [0.44 - 13.55]	0.342	1.19 [0.26 - 4.88]	1.000
High risk cytogenetics	1.49 [0.43 - 5.52]	0.577	1.44 [0.33 - 6.03]	0.747
Current response status				
sCR or CR	0.2 [0.04 - 0.8]	0.013	0.4 [0.04 - 2.23]	0.317
Current MM treatment regimen				
Contains CD38 mAb	0.9 [0.27 - 2.95]	1.000	0.75 [0.18 - 2.96]	0.762
Contains IMiD	1.04 [0.31 - 3.43]	1.000	0.76 [0.19 - 3.04]	0.761
Contains proteasome inhibitor	2.11 [0.6 - 8.17]	0.267	1.91 [0.47 - 7.78]	0.350
Contains corticosteroids	1.49 [0.45 - 4.99]	0.589	1.95 [0.49 - 8.67]	0.363
Contains venetoclax	0.38 [0.03 - 3.62]	0.357	0 [0 - 3.45]	0.322
No active treatment	1.08 [0.23 - 5.79]	1.000	1.22 [0.18 - 6.34]	1.000

Biochemical parameters

at last clinic visit before COVID-19 episode

Leukocytopenia (< 4 x 10e9/L)	0.67 [0.19 - 2.34]	0.571	0.68 [0.13 - 2.88]	0.749
Lymphocytopenia (< 0.5 x 10e9/L)	∞ [0.99 - ∞]	0.036	0 [0 - 2.07]	0.176
Neutropenia (< 2 x10e9/L)	0.64 [0.16 - 2.52]	0.542	0.39 [0.04 - 2.16]	0.312
IgG level (mg/dL)	1074.5 / 738	0.297	869 / 718	0.074
Hypogammaglobulinemia (IgG < 700 mg/dL)	1.42 [0.41 - 5.24]	0.584	1.39 [0.33 - 5.61]	0.751
Severe hypogammaglobulinemia (IgG < 400 mg/dL)	∞ [0.79 - ∞]	0.072	7.80 [0.97 - 97.75]	0.027
Immunoparesis	3.58 [0.46 - 43.2]	0.192	1.70 [0.17 - 87.01]	1.000

Peak biochemical parameters during hospitalization

Note: variables below only apply to the subset of patients hospitalized at Mount Sinai Hospital

n = 23

CRP (mg/L)	-	-	144.8 / 289.4	0.019
Total leukocyte count (x10e9/L) (lowest)	-	-	2.9 / 4.2	0.444
Absolute lymphocyte count (x10e9/L) (lowest)	-	-	0.4 / 0.2	0.319
Creatinine (mg/dL)	-	-	1.1 / 2.5	0.052
Procalcitonin (ng/mL)	-	-	0.5 / 2.3	0.010
Ferritin (µg/L)	-	-	1282 / 3474	0.007
Fibrinogen (mg/dL)	-	-	646 / 667	0.888
D-dimer (mg/L)	-	-	2 / 18.2	0.004
LDH (U/L)	-	-	478 / 830	0.065
ALT (U/L)	-	-	43.5 / 76.5	0.244
AST (U/L)	-	-	49.5 / 100	0.054
IL-1b (pg/mL)	-	-	0.5 / 0.5	1.000
IL-6 (pg/mL)	-	-	119.2 / 296.8	0.117
IL-8 (pg/mL)	-	-	46.6 / 137	0.104
TNF-alfa (pg/mL)	-	-	29.4 / 21.3	0.574

Note: values are presented as OR [95% confidence interval] or median of group 1/median of group 2; p values according to Wilcoxon test for continuous variables and Fisher's exact test for categorical variables

Abbreviations: OR, odds ratio; CI, confidence interval; NH, not hospitalized; H, hospitalized; BMI, body mass index; COPD, chronic obstructive pulmonary disease; eGFR, estimated glomerular filtration rate; ACE, angiotensin converting enzyme; NSAID, non-steroidal anti-inflammatory drug; ASCT, autologous stem cell transplant; Ig, immunoglobulin; CRP, C-reactive protein; ALT, alanine aminotransferase; AST, aspartate aminotransferase; IL, interleukin; TNF, tumor necrosis factor

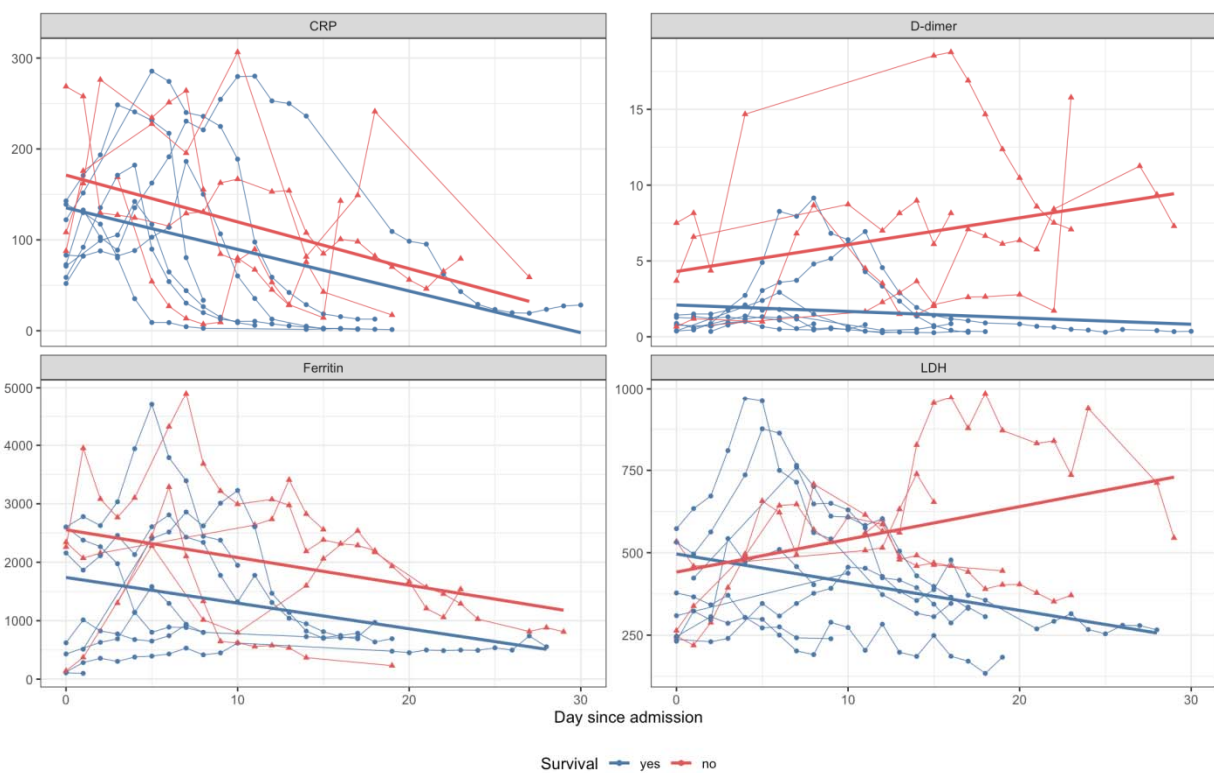
566

567

568 **Supplementary Figures**

569 **Figure S1:** Evolution of selected inflammatory biomarkers in a subset of patients (n = 12)
570 hospitalized at the Mount Sinai Hospital for which the data was available. Different
571 measurements from the same patient are connected. A linear regression line is plotted for the
572 subgroup of patients that survived (blue, n = 8) and died (red, n = 4), respectively.

573



574