

Title: Implementation and evaluation of a novel real-time multiplex assay for SARS-CoV-2: In-field learnings from a clinical microbiology laboratory

Author names: Eloise Williams¹, Katherine Bond¹, Brian Chong², Dawn Giltrap¹, Malcolm Eaton¹, Peter Kyriakou¹, Peter Calvert¹, Bowen Zhang¹, Mahendra Siwan¹, Benjamin Howden³, Julian Druce², Mike Catton², Deborah A Williamson^{1,2,3}

Author affiliations:

¹ *Department of Microbiology, Royal Melbourne Hospital, Melbourne, Victoria, Australia*

² *Victorian Infectious Diseases Reference Laboratory, The Peter Doherty Institute for Infection and Immunity, Melbourne, Australia*

³ *Department of Microbiology and Immunology, The University of Melbourne at The Peter Doherty Institute for Infection and Immunity, Melbourne, Australia*

1 **ABSTRACT**

2 The unprecedented scale of testing required to effectively control the coronavirus
3 disease (COVID-19) pandemic has necessitated urgent implementation of rapid
4 testing in clinical microbiology laboratories. To date, there are limited data available
5 on the analytical performance of emerging commercially available assays for severe
6 acute respiratory syndrome coronavirus 2 (SARS-CoV-2) and integration of these
7 assays into laboratory workflows. Here, we performed a prospective validation study
8 of a commercially available assay, the AusDiagnostics Coronavirus Typing (8-well)
9 assay. Respiratory tract samples for SARS-CoV-2 testing were collected between 1st
10 March and 25th March 2020. All positive samples and a random subset of negative
11 samples were sent to a reference laboratory for confirmation. In total, 2,673 samples
12 were analyzed using the Coronavirus Typing assay. The predominant sample type
13 was a combined nasopharyngeal/throat swab (2,640/2,673; 98.8%). Fifty-four
14 patients were positive for SARS-CoV-2 (0.02%) using the Coronavirus Typing assay;
15 53/54 (98.1%) positive results and 621/621 (100%) negative results were concordant
16 with the reference laboratory. Compared to the reference standard, sensitivity of the
17 Coronavirus Typing assay for SARS-CoV-2 was 100% [95% CI 93.2%-100%],
18 specificity 99.8% [95% CI 99.1%-100%], positive predictive value 98.1% (95% CI
19 90.2%-99.7%) and negative predictive value 100% [95% CI 99.4%-100%]. In many
20 countries, standard regulatory requirements for the introduction of new assays have
21 been replaced by emergency authorizations and it is critical that laboratories share
22 their post-market validation experiences, as the consequences of widespread
23 introduction of a sub-optimal assay for SARS-CoV-2 are profound. Here, we share
24 our in-field experience, and encourage other laboratories to follow suit.

25

26 **1. INTRODUCTION**

27 The coronavirus disease (COVID-19) pandemic caused by severe acute respiratory
28 syndrome coronavirus 2 (SARS-CoV-2) is a global public health emergency on an
29 unprecedented scale. One of the fundamental pillars in the prevention and control of
30 COVID-19 is timely, scalable and accurate diagnostic testing. Initial laboratory
31 responses included early characterization and release of the viral whole genome
32 sequence by Chinese investigators in early January 2020 ¹, which enabled rapid
33 development of real-time reverse-transcription polymerase chain reaction (RT-PCR)
34 workflows for detection of SARS-CoV-2. In many settings, testing was initially
35 conducted using in-house RT-PCR assays in public health laboratories ²⁻⁶.
36 However, the sheer scale of testing required to effectively control this pandemic
37 means there is an urgent need for rapid, sensitive and specific testing in routine
38 clinical microbiology laboratories beyond the public health laboratory setting.

39

40 In many countries, the need for rapid introduction of SARS-CoV-2 testing has
41 resulted in rapid changes or extensions to existing regulatory frameworks. For
42 example, in the United States (US) the US Food and Drug Association (FDA) began
43 allowing SARS-CoV-2 testing using laboratory-developed tests without prior agency
44 approval on 29th February 2020, as long as laboratories submitted an Emergency
45 Use Authorization application within 15 days ⁷. In Australia, the Commonwealth
46 Department of Health exempted medical devices related to the diagnosis,
47 confirmatory testing, prevention, monitoring, treatment or alleviation of COVID-19
48 infection from the requirement for devices to be included in the Therapeutic Goods
49 Administration (TGA) Australian Register of Therapeutic Goods (ARTG) ahead of
50 use in Australia on 31st January, 2020 for laboratories within the Public Health

51 Laboratory Network of Australasia (PHLN) ⁸ and expanded these exemptions to
52 include all accredited pathology laboratories on 22nd March 2020 ⁹.

53

54 A range of commercially available RT-PCR assays are now approved for use in
55 diagnostic laboratories in Australia ¹⁰, although to date, there are little published data
56 on the performance characteristics and implementation of these assays in diagnostic
57 microbiology workflows ¹¹. Here, we describe our initial experience using a
58 commercially-available multiplex two-step nested tandem RT-PCR assay for the
59 detection of coronaviruses that infect humans, including SARS-CoV-2. We
60 demonstrate high sensitivity and specificity for this assay, and describe rapid
61 upscaling and integration into our laboratory workflow.

62

63 **METHODS**

64 ***Study setting, testing timeline and patient populations***

65 This study was conducted in the Department of Microbiology, Royal Melbourne
66 Hospital (RMH). RMH is an academic teaching hospital located in central Melbourne,
67 Victoria, Australia, that has approximately 1,400 beds across hospital and
68 community settings. On 25th January 2020, a dedicated screening clinic for patients
69 with suspected COVID-19 was implemented at RMH ¹², and on 11th March 2020 a
70 separate clinic was established at RMH for healthcare workers with suspected
71 COVID-19. From 23rd January to 13th March 2020, diagnostic testing of RMH patients
72 for SARS-CoV-2 was performed at the Victorian Infectious Diseases Reference
73 Laboratory (VIDRL). On 3rd March 2020, testing was implemented in the RMH
74 laboratory using the Coronavirus Typing (8-well) panel (AusDiagnostics, Mascot,
75 Australia).

76

77 ***Patient samples***

78 Study samples were collected as part of routine clinical care between 1st March 2020
79 and 25th March 2020. Samples comprised combined nasopharyngeal and throat
80 swabs collected in universal transport media (Copan Diagnostics, Murrieta, USA) or
81 Liquid Amies transport media (Copan Diagnostics, Murrieta, USA), sputum, tracheal
82 aspirates, bronchoalveolar lavage and bronchial washings. Victorian Department of
83 Health guidelines during this period limited testing to patients who met at least one
84 clinical (fever or acute respiratory infection) and one epidemiological criteria for
85 COVID-19 (international travel with onset of symptoms within 14 days of return;
86 close contact of confirmed COVID-19 case with onset of symptoms within 14 days of
87 last contact; healthcare or residential aged care workers; aged and residential care
88 residents; patients who are Aboriginal and Torres Strait Islander); or patients
89 admitted to hospital with acute respiratory tract infection and fever ¹³.

90

91 ***Diagnostic testing***

92 RNA was extracted from 200uL of clinical samples using either the viral RNA mini kit
93 (QIAGEN, Hilden, Germany) on the EZ1 Advanced system (QIAGEN, Hilden,
94 Germany) or the MT-PREP Extractor System (AusDiagnostics, Mascot, Australia).
95 On both platforms, RNA was eluted in 60uL. Extracted RNA was subsequently
96 tested using the Coronavirus Typing assay. This is a two-step, hemi-nested
97 multiplex tandem PCR, with seven coronavirus RNA targets (Table 1) plus a
98 proprietary artificial sequence as an internal control. Currently, it is intended for use
99 as a research use only (RUO) assay, meaning that it can be used for SARS-CoV-2
100 testing as long as the testing laboratory is able to provide robust validation data. The

101 High-Plex 24 system (AusDiagnostics, Mascot, Australia) was used to perform the
102 two-step real-time RT-PCR. In each run, the following controls were used: (i) a
103 negative control comprising PCR grade sterile water; (ii) a proprietary artificial target
104 sequence used as an internal control to monitor sample inhibition, and (iii) an
105 external positive control, which initially comprised SARS-2-CoV complementary DNA
106 (cDNA), pending the availability of gamma-irradiated SARS-CoV-2 in mid-March.

107

108 In keeping with national guidelines regarding the validation of new diagnostic assays
109 for SARS-CoV-2^{14, 15} and in order to generate sufficient validation data, all samples
110 were initially tested in parallel with Victoria's virology reference laboratory, VIDRL. At
111 the reference laboratory, testing was first conducted using an in-house assay for the
112 SARS-CoV-2 RdRp gene¹⁶. If positive, subsequent testing for the SARS-CoV-2 E
113 gene was conducted, using previously published primers². All samples that tested
114 positive for SARS-CoV-2 using the Coronavirus Typing assay were sent to the
115 reference laboratory for confirmatory testing. Further, a subset of samples that
116 tested negative on the Coronavirus Typing assay were also tested at the reference
117 laboratory in order to provide additional specificity data. Prior to commencement of
118 clinical testing the reference laboratory also provided a blinded quality assessment
119 panel containing a dilution series of samples of standard culture medium spiked in
120 duplicate with gamma-irradiated culture supernatants of a SARS-CoV-2 isolate,
121 described previously¹⁶.

122

123 Samples that had a negative result on the Coronavirus Typing assay and the VIDRL
124 RdRP assay were considered a true negative result. Samples that had a positive
125 result for SARS-CoV-2 on the Coronavirus Typing assay were tested on both the

126 RdRP and E gene assays at the reference laboratory. Two concordant positive
127 results between the 3 assays were considered a true positive result. Samples with a
128 single positive assay result were considered discrepant.

129

130 ***Statistical analyses***

131 Sensitivity, specificity, positive predictive value and negative predictive value were
132 reported with 95% confidence intervals. Spearman's rank correlation was used to
133 examine the association between viral concentration and days from symptom onset.
134 All statistical analyses were performed using R (version 3.53). A p value ≤ 0.05 was
135 considered statistically significant.

136

137 **RESULTS**

138 ***Characteristics of the study population and diagnostic testing results***

139 Over the study period, a total of 2,673 patient samples were analyzed using the
140 Coronavirus Typing assay. The predominant sample type was a combined
141 nasopharyngeal/throat swab (2640/2673; 98.8%); with lower respiratory tract
142 samples comprising 33/2,673 (1.2%) of samples (18 sputa, 7 tracheal aspirates, 4
143 bronchial washes and 4 bronchoalveolar lavage specimens). Overall, 1,129 (42%)
144 patients were male. The median age of patients was 35 years [interquartile range
145 (IQR); 28-50 years]. Most samples were collected through the dedicated COVID-19
146 screening clinic in the Emergency Department (2,002/2,673 samples; 74.9%), with
147 513/2,673 (19.2%) samples from the dedicated COVID-19 staff testing clinic,
148 108/2,673 (4%) from other inpatient wards, 30/2,673 (1.1%) from outpatient clinics
149 and 20/2,673 (0.7%) from the intensive care unit.

150

151 Of the 2,673 patient samples tested, 54 patients were positive for SARS-CoV-2
152 (0.02%). Of these, 33/54 were male (61%). The median age of PCR-positive
153 patients was 40 years [IQR 29-51 years]. Forty-one patients (76%) had returned
154 from international travel in the preceding 14 days, 27 patients (50%) were contacts of
155 known cases of COVID-19 and 15 patients (28%) had both of these risk factors. Four
156 patients (7%) were healthcare workers. Four patients (7.4%) required admission to
157 hospital, however no patients required intensive care unit support. One patient had
158 no clear epidemiological link (no international travel or known contact with a COVID-
159 19 case), suggesting possible community transmission. Of the 54 SARS-CoV-2
160 positive patients, the median time from onset of symptoms to swab collection was 3
161 days [IQR; 1-5 days] and the median turn-around time from sample collection to
162 result for SARS-CoV-2 positive results was 13 hours [IQR; 10-21 hours].

163

164 ***Assay performance***

165 All 54 positive samples were sent to the reference laboratory for confirmation, and a
166 random subset of 621/2,673 negative samples (23%) was also tested at the
167 reference laboratory. Of the 54 positive results, 53 were positive on at least one
168 confirmatory assay at VIDRL. Of the 621 randomly selected negative samples that
169 were sent to the reference laboratory, all were confirmed as negative. Compared to
170 the reference standard, sensitivity of the Coronavirus Typing assay for SARS-CoV-2
171 was 100% [95% CI 93.2%-100%], specificity 99.8% [95% CI 99.1%-100%], positive
172 predictive value 98.1% (95% CI 90.2%-99.7%) and negative predictive value 100%
173 [95% CI 99.4%-100%].

174

175 Importantly, there was a single discrepant sample that tested positive on the
176 AusDiagnostics Coronavirus Typing assay, and negative on the RdRP and E gene
177 assays at VIDRL. This sample had a melt curve at the appropriate temperature on
178 the AusDiagnostics assay and had a low semi-quantitative concentration of SARS-
179 CoV-2. Testing of multiple replicates of this sample at VIDRL disclosed a pattern of
180 results typical of a sample at the limit of detection in the reference assays: positive in
181 some replicates at high cycle threshold values, and negative in others (data not
182 shown). This sample was collected 4 days after symptom onset from a patient with
183 who had recently returned from international travel and had contact with a known
184 case of COVID-19. Given the public health consequences of reporting a false-
185 negative result, we elected to report this result as a 'probable low positive result.'

186

187 The comparative results of the quality assessment panel from the reference
188 laboratory are shown in Supplementary Table 1. All samples were extracted on both
189 the EZ1 Advanced system and the MT-PREP Extractor System. SARS-CoV-2 was
190 detected in all 12 gamma-irradiated SARS-CoV-2 spiked samples from a blinded set
191 of 20 samples using the Coronavirus Typing assay (Supplementary Table 1).

192

193 Other respiratory pathogens were detected in 191/2,673 (7%) samples, with
194 seasonal coronaviruses accounting for 119/191 (62%) of these infections.

195 Coinfection with SARS-CoV-2 was detected on two occasions, one in combination
196 with RSV and another with human coronavirus OC43 (Supplementary Table 2).

197

198 A weak inverse correlation was demonstrated between the semi-quantitative
199 assessment of viral concentration of SARS-CoV-2 using the Coronavirus Typing

200 assay and the time of swab collection after symptom onset ($r^2 = -0.3357$; $p=0.01$)
201 with the highest viral concentrations detected in the first 24-48 hours after symptom
202 onset (Figure 1).

203

204 ***Integration into workflow***

205 The number of samples received for SARS-CoV-2 increased rapidly after the
206 implementation of testing at RMH, with over 200 samples received per day by the
207 second week of testing (Figure 2A). We undertook an internal audit assessing the
208 time of day that specimens arrived in the laboratory; we identified that the majority of
209 samples arrived in the afternoon and evening, rather than in the morning (Figure 2B).
210 This information enabled us to rapidly adjust work rosters for our specialist molecular
211 scientific staff rostering in order to optimize our SARS-CoV-2 testing workflow. This
212 adjustment allowed the laboratory to consistently achieve turnaround times of less
213 than 24 hours for coronavirus testing (Figure 2C).

214

215 **DISCUSSION**

216 Initial diagnostic testing for SARS-CoV-2 in low prevalence, high resource settings
217 was focused in public health labs, generally using in-house real-time RT-PCR
218 assays recommended to the World Health Organization (WHO) ^{2, 15}. However, as the
219 COVID-19 pandemic has rapidly evolved, the focus of testing has shifted to
220 diagnostic testing in clinical microbiology laboratories to enable the delivery of
221 clinical care ⁷. The emergency exemptions instituted by national regulatory bodies
222 such as the FDA in the US and the TGA in Australia have led to expedited approvals
223 for in-vitro diagnostic tests to be generated based only on information provided by
224 the manufacturer and limited external validation (<https://www.tga.gov.au/covid-19->

225 test-kits-included-artg-legal-supply-australia). There is thus an urgent need for robust
226 clinical validation data to support the use of commercial assays for SARS-CoV-2
227 testing. Here, we provide validation of a commercially-available assay, and describe
228 how we integrated testing for SARS-CoV-2 into a busy academic hospital laboratory.
229

230 Our early experience of testing for SARS-CoV-2 is similar to other early data from
231 low incidence settings^{17, 18}. This initial cohort of patients with COVID-19 was
232 predominantly returning international travelers; and half had known contact with a
233 confirmed COVID-19 case. In general, patients were younger than those seen in
234 higher incidence settings where community transmission has been established¹⁹.
235 These findings may be impacted by selection bias, given the Victorian Department of
236 Health guidelines in place at the time of this study mostly limited testing to those with
237 epidemiological risk factors for COVID-19. At the beginning of this study, only limited
238 community transmission had been established in Australia²⁰, with the situation
239 evolving such that on the last date of patient inclusion, 2,799 cases had been
240 confirmed in Australia, with 547 new cases in the previous 24 hours and 11 total
241 deaths²¹. Significant public health measures designed to mitigate the clinical,
242 societal and economic impact of COVID-19 were instituted in a staged manner
243 during this study period including international travel restrictions and increasing
244 social distancing measures²².

245
246 Similar to other studies, we describe a correlation between days after symptom
247 onset and concentration of SARS-CoV-2, with the highest concentrations
248 demonstrated early after symptom onset,²³⁻²⁵. This suggests that SARS-CoV-2 can
249 be transmitted early in disease, even when symptoms are relatively mild and often

250 prior to patients seeking medical attention and the diagnosis of COVID-19 being
251 established. This may account for the efficient person-to-person transmission noted
252 ²⁶, particularly within families and social gatherings ^{27, 28}. This finding has significant
253 implications for infection control and public health measures required to mitigate this
254 disease.

255

256 Compared to a public health laboratory reference standard, we found that the
257 Coronavirus Typing assay had high sensitivity, specificity and negative predictive
258 value, and in our laboratory, was well-suited to medium-throughput testing for SARS-
259 CoV-2 (100-200 specimens per day). We hypothesize that the single discrepant
260 result (positive on Coronavirus Typing assay and negative at reference laboratory)
261 was due to technical differences in the assay design, with the Coronavirus Typing
262 assay having a hemi-nested design and high number of PCR cycles – it is possible
263 that these technical differences may result in a lower limit of detection than the public
264 health laboratory reference standard. In addition, testing on the original referred
265 swab after RMH diagnostic testing had been performed may have diminished the
266 quantity of available input material for testing at the reference laboratory.

267

268 In order to accommodate the rapid introduction of a high-impact new test, it was
269 necessary to undertake considerable changes to the workflow of the laboratory, with
270 a change in our staffing shift patterns towards late afternoon and evening work.
271 Similar to many clinical microbiology laboratories, molecular work in our laboratory is
272 performed by staff with specific skills in molecular biology. However, in order to
273 accommodate changes in shift pattern (and to ensure a larger pool of staff to perform
274 testing) we introduced a rapid training program for non-molecular staff. Collectively,

275 these workflow changes enabled us to reduce the turn-around time for producing a
276 SARS-CoV-2 result, which will be important as the pandemic in Australia evolves
277 towards clinical care of infected patients.

278

279 Although a limitation of our study is the single-site design, we provide robust
280 validation data for a testing platform that is widely used across Australia, and has
281 also been used in the United States and the United Kingdom ²⁹. In this rapidly
282 evolving pandemic, where standard regulatory requirements for the introduction of
283 new assays have been replaced by emergency authorizations in many countries,
284 including Australia, it is critical that laboratories share their post-market validation
285 experiences, as the consequences of widespread introduction of a sub-optimal
286 assay for SARS-CoV-2 are profound.

287

288 COVID-19 has placed unprecedented demands on clinical microbiology laboratories.
289 In conjunction with the public health units, clinical microbiology laboratories were part
290 of the first ‘wave’ of response to this pandemic ³⁰. Subsequent waves will relate to
291 clinical management, critical care and end of life support for those affected by this
292 disease ³¹⁻³³. In Australia, containment and preparedness measures, particularly
293 international travel restrictions, allowed time for clinical microbiology laboratories to
294 review diagnostic assays, develop workflows and implement testing prior to the
295 surge in demand. Here we share our pragmatic ‘in-field’ experience, and encourage
296 other laboratories to follow suit.

297

298

299

300 **ACKNOWLEDGEMENTS**

301 We thank staff in the Department of Microbiology at the Royal Melbourne Hospital
302 and in the Victorian Infectious Diseases Reference Laboratory for technical support.

303

304 **FUNDING**

305 No specific funding was received to conduct this work.

306

307 **CONFLICTS OF INTEREST**

308 All authors: no conflicts.

309

310 **ETHICS**

311 This study was approved as part of routine activities relating to the introduction and
312 validation of in-vitro diagnostic devices QA2019134. Validation studies are a core
313 part of laboratory work. This validation study was conducted according to the
314 guidelines of the National Pathology Accreditation Advisory Council, '*Requirement*
315 *for quality control, external quality assurance and method evaluation (sixth*
316 *edition)*³⁴.

317

318 All authors had full access to all of the data (including statistical reports and tables)
319 in the study.

320

321

322

323

324

325 REFERENCES

- 326 [1] Zhu N, Zhang D, Wang W, et al. A Novel Coronavirus from Patients with Pneumonia
327 in China, 2019. *N Engl J Med.* 2020; 382: 727-33.
- 328 [2] Corman VM, Landt O, Kaiser M, et al. Detection of 2019 novel coronavirus (2019-
329 nCoV) by real-time RT-PCR. *Euro Surveill.* 2020; 25.
- 330 [3] Reusken C, Broberg EK, Haagmans B, et al. Laboratory readiness and response for
331 novel coronavirus (2019-nCoV) in expert laboratories in 30 EU/EEA countries, January 2020.
332 *Euro Surveill.* 2020; 25.
- 333 [4] Centers for Disease Control and Prevention. CDC 2019 Novel Coronavirus (2019-
334 nCoV) Real-Time RT-PCR Diagnostic Panel. Atlanta: Centers for Disease Control and
335 Prevention, 2020.
- 336 [5] Chu DKW, Pan Y, Cheng SMS, et al. Molecular Diagnosis of a Novel Coronavirus
337 (2019-nCoV) Causing an Outbreak of Pneumonia. *Clin Chem.* 2020.
- 338 [6] Pfeifferle S, Reucher S, Norz D, et al. Evaluation of a quantitative RT-PCR assay for the
339 detection of the emerging coronavirus SARS-CoV-2 using a high throughput system. *Euro*
340 *Surveill.* 2020; 25.
- 341 [7] Sharfstein JM, Becker SJ, Mello MM. Diagnostic Testing for the Novel Coronavirus.
342 *JAMA.* 2020.
- 343 [8] *Therapeutic Goods (Medical Devices—Novel Coronavirus) (Emergency) Exemption*
344 *2020.* (Cth)
- 345 [9] *Therapeutic Goods (Medical Devices - Accredited Pathology Laboratories (COVID-19*
346 *Emergency) Exemption 2020.* (Cth)
- 347 [10] Australian Government Department of Health: Therapeutic Goods Administration.
348 COVID-19 test kits included on the ARTG for legal supply in Australia. Canberra: Australian

- 349 Government Department of Health, 2020. [https://www.tga.gov.au/covid-19-test-kits-](https://www.tga.gov.au/covid-19-test-kits-included-artg-legal-supply-australia)
350 [included-artg-legal-supply-australia](https://www.tga.gov.au/covid-19-test-kits-included-artg-legal-supply-australia). Accessed 12th April, 2020.
- 351 [11] Konrad R, Eberle U, Dangel A, et al. Rapid establishment of laboratory diagnostics for
352 the novel coronavirus SARS-CoV-2 in Bavaria, Germany, February 2020. *Euro Surveill.* 2020;
353 25.
- 354 [12] Rojek A DM, Camilleri D, Marshall C, Buising K, Walsham N, Putland M. Early clinical
355 response to a high consequence infectious disease outbreak at the Royal Melbourne
356 Hospital Emergency Department - insights from COVID-19. *Med J Aust.* 2020.
- 357 [13] Victorian Department of Health and Human Services. Coronavirus disease 2019
358 (COVID-19): case and contact management guidelines for health services and general
359 practitioners. Version 15. 2020.
- 360 [14] National Pathology Accreditation Advisory Council. Requirements for the
361 development and use of in-house in vitro diagnostic medical devices (IVDs) (Fourth Edition).
362 Canberra: Australian Government Department of Health, 2018.
- 363 [15] Public Health Laboratory Network. PHLN guidance on laboratory testing for SARS-
364 CoV-2 (the virus that causes COVID-19). Public Health Laboratory Network, 2020.
- 365 [16] Caly L DJ, Roberts J, Bond K, Tran T, KostECKI R, Yoga Y, Naughton W, Tairaoa G,
366 Seemann T, Schultz MB, Howden BP, Korman TM, Lewin SR, Williamson DA, Catton M.
367 Isolation and rapid sharing of the 2019 novel coronavirus (SARS-CoV-2) from the first
368 diagnosis of COVID-19 in Australia. *Med J Aust.* 2020.
- 369 [17] Ng Y, Li Z, Chua YX, et al. Evaluation of the Effectiveness of Surveillance and
370 Containment Measures for the First 100 Patients with COVID-19 in Singapore - January 2-
371 February 29, 2020. *MMWR.* 2020; 69: 307-11.

- 372 [18] Spiteri G, Fielding J, Diercke M, et al. First cases of coronavirus disease 2019 (COVID-
373 19) in the WHO European Region, 24 January to 21 February 2020. *Euro Surveill.* 2020; 25.
- 374 [19] Onder G, Rezza G, Brusaferro S. Case-Fatality Rate and Characteristics of Patients
375 Dying in Relation to COVID-19 in Italy. *JAMA.* 2020.
- 376 [20] World Health Organization. Coronavirus disease 2019 (COVID-19) Situation Report -
377 42, 2nd March 2020. Geneva: World Health Organization.
- 378 [21] World Health Organization. Coronavirus disease 2019 (COVID-19) Situation Report -
379 66, 26 March 2020. Geneva: World Health Organization.
- 380 [22] Australian Government Department of Health. Government response to the COVID-
381 19 outbreak. Canberra, 2020. [https://www.health.gov.au/news/health-alerts/novel-](https://www.health.gov.au/news/health-alerts/novel-coronavirus-2019-ncov-health-alert/government-response-to-the-covid-19-outbreak)
382 [coronavirus-2019-ncov-health-alert/government-response-to-the-covid-19-outbreak.](https://www.health.gov.au/news/health-alerts/novel-coronavirus-2019-ncov-health-alert/government-response-to-the-covid-19-outbreak)
383 Accessed 12th April, 2020.
- 384 [23] To KK, Tsang OT, Leung WS, et al. Temporal profiles of viral load in posterior
385 oropharyngeal saliva samples and serum antibody responses during infection by SARS-CoV-
386 2: an observational cohort study. *Lancet Infect Dis.* 2020.
- 387 [24] Kim JY, Ko JH, Kim Y, et al. Viral Load Kinetics of SARS-CoV-2 Infection in First Two
388 Patients in Korea. *J Korean Medl Sci.* 2020; 35: e86.
- 389 [25] Zou L, Ruan F, Huang M, et al. SARS-CoV-2 Viral Load in Upper Respiratory Specimens
390 of Infected Patients. *N Engl J Med.* 2020; 382: 1177-79.
- 391 [26] Li Q, Guan X, Wu P, et al. Early Transmission Dynamics in Wuhan, China, of Novel
392 Coronavirus–Infected Pneumonia. *N Eng J Med.* 2020; 382: 1199-207.
- 393 [27] Pung R, Chiew CJ, Young BE, et al. Investigation of three clusters of COVID-19 in
394 Singapore: implications for surveillance and response measures. *Lancet.* 2020; 395: 1039-46.

- 395 [28] Chan JF-W, Yuan S, Kok K-H, et al. A familial cluster of pneumonia associated with
396 the 2019 novel coronavirus indicating person-to-person transmission: a study of a family
397 cluster. *Lancet*. 2020; 395: 514-23.
- 398 [29] Meunier D, Woodford N, Hopkins KL. Evaluation of the AusDiagnostics MT CRE EU
399 assay for the detection of carbapenemase genes and transferable colistin resistance
400 determinants mcr-1/-2 in MDR Gram-negative bacteria. *J Antimicrob Chemother*. 2018; 73:
401 3355-58.
- 402 [30] Binnicker MJ. Emergence of a Novel Coronavirus Disease (COVID-19) and the
403 Importance of Diagnostic Testing: Why Partnership between Clinical Laboratories, Public
404 Health Agencies, and Industry Is Essential to Control the Outbreak. *Clin Chem*. 2020.
- 405 [31] Poston JT, Patel BK, Davis AM. Management of Critically Ill Adults With COVID-19.
406 *JAMA* 2020.
- 407 [32] Murthy S, Gomersall CD, Fowler RA. Care for Critically Ill Patients With COVID-19.
408 *JAMA*. 2020.
- 409 [33] Curtis JR, Kross EK, Stapleton RD. The Importance of Addressing Advance Care
410 Planning and Decisions About Do-Not-Resuscitate Orders During Novel Coronavirus 2019
411 (COVID-19). *JAMA*. 2020.
- 412 [34] National Pathology Accreditation Advisory Council. Requirements for Quality
413 Control, External Quality Assurance and Method Evaluation (Sixth edition 2018). *Canberra:*
414 *Australian Government Department of Health*; 2018.
- 415
- 416
- 417
- 418

419 **TABLE**

420 **Table 1.** Viral targets present in the AusDiagnostics Coronavirus Typing Assay

Virus assay	Genetic Target of RT-PCR Sequence
HCoV-HKU1	Nucleocapsid
HCoV-OC43	Nucleocapsid
HCoV-229E	Membrane protein
HCoV-NL63	Membrane protein
MERS-CoV	Orf1ab
SARS-CoV	Orf1ab
SARS-CoV-2	Orf1ab

421 Abbreviations: CoV, coronavirus; HCoV, human coronavirus; MERS, Middle Eastern
422 respiratory syndrome; Orf, open reading frame; SARS, Severe acute respiratory
423 syndrome.

424

425

426

427

428

429

430

431

432

433

434

435 **FIGURE LEGENDS**

436 **Figure 1.** Box-plot of Coronavirus Typing assay semi-quantitative concentration
437 value relative to the date a nasopharyngeal/throat swab was taken for SARS-CoV-2
438 after symptom onset. The solid line represents the median and the whiskers
439 represent the interquartile range

440 **Figure 2:** A) Number of SARS-CoV-2 tests performed using the Coronavirus Typing
441 assay per day; B) Number of samples received by hour of the day for SARS-CoV-2
442 during the study period; C) Median turnaround time for SARS-CoV-2 testing from
443 sample collection to result availability per day

Figure 1. Correlation between semi-quantitative assessment of viral concentration of SARS-CoV-2 and time of swab collection after symptom onset

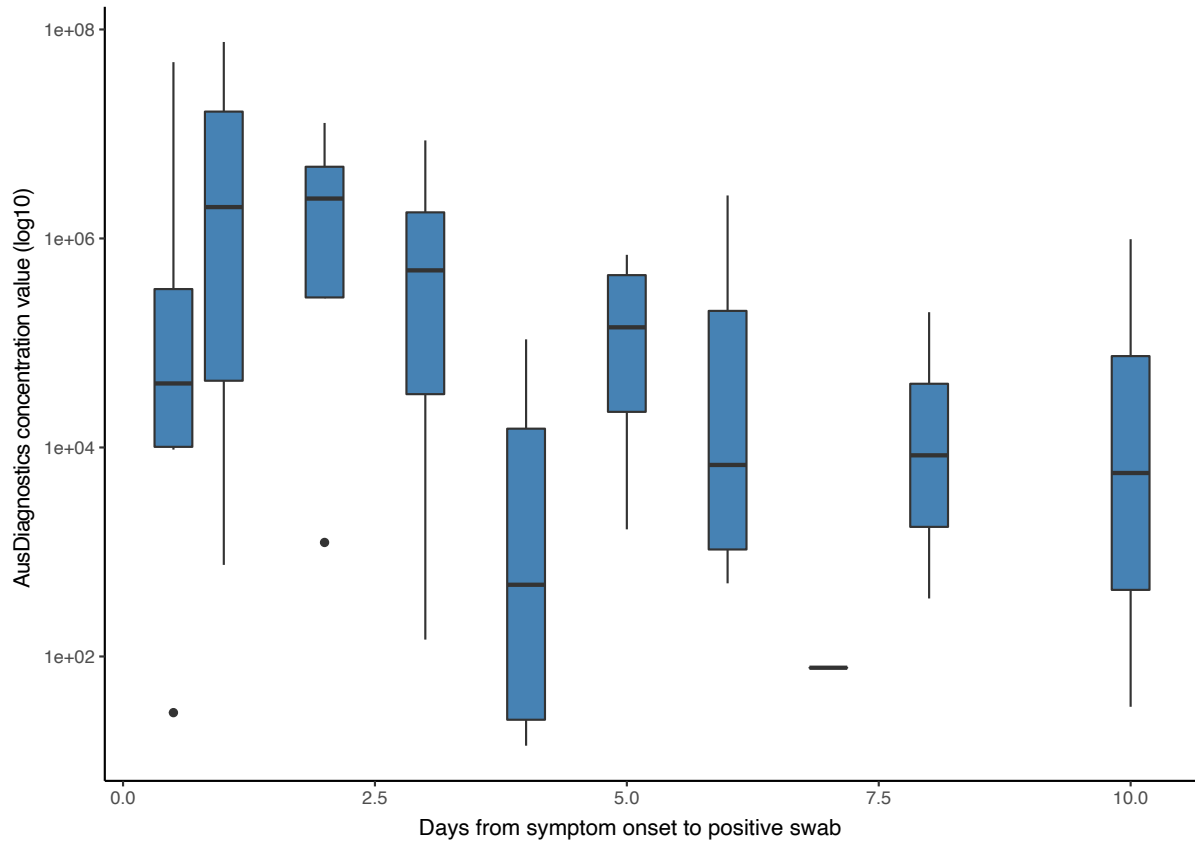


Figure 1 Legend. Box-plot of Coronavirus Typing assay semi-quantitative concentration value relative to the date a nasopharyngeal/throat swab was taken for SARS-CoV-2 after symptom onset. The solid line represent the median and the whiskers represent the interquartile range

medRxiv preprint doi: <https://doi.org/10.1101/2020.06.03.20117267>; this version posted June 5, 2020. The copyright holder for this preprint (which was not certified by peer review) is the author/funder, who has granted medRxiv a license to display the preprint in perpetuity. All rights reserved. No reuse allowed without permission.

Figure 2. Characteristics of samples received for SARS-CoV-2 testing during the validation study period.

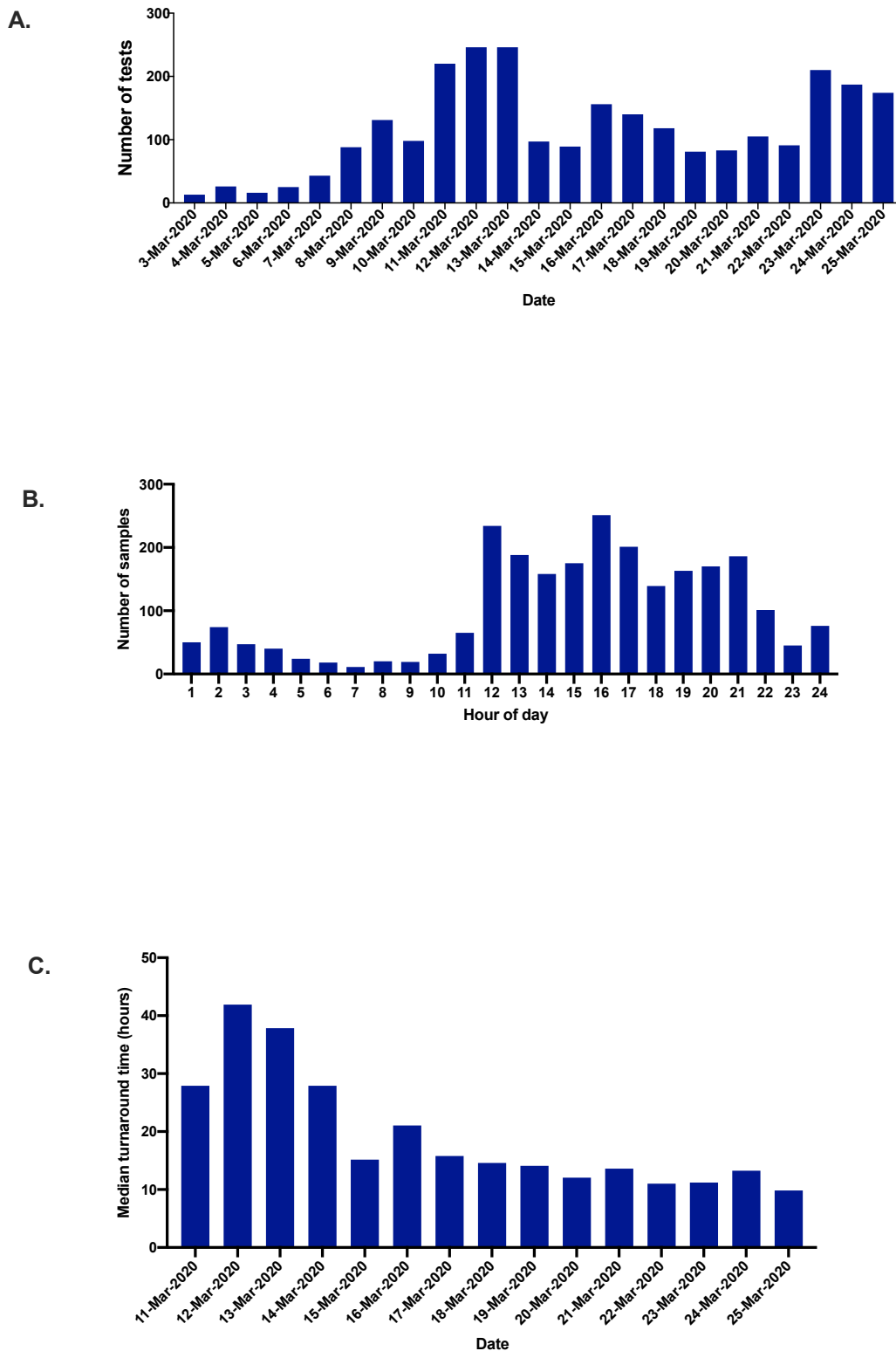


Figure 2 Legend. A) Number of SARS-CoV-2 tests performed using the Coronavirus Typing assay per day; B) Number of samples received by hour of the day for SARS-CoV-2 during the study period; C) Median turnaround time for SARS-CoV-2 testing from sample collection to result availability per day