

Quantifying the prevalence of COVID-19 patients who are persistently SARS-CoV-2 PCR positive yet not hospitalized

Vineet Agarwal¹⁺, AJ Venkatakrisnan¹⁺, Arjun Puranik¹, Agustin Lopez-Marquez¹, Douglas W. Challener², John C. O'Horo², Andrew D. Badley², John D. Halamka², William G. Morice II^{2,3}, Venky Soundararajan^{1*}

1. Inference, inc., One Main Street, Suite 400, East Arcade, Cambridge, MA 02142, USA

2. Mayo Clinic, Rochester MN, USA

3. Mayo Clinic Laboratories, Rochester MN, USA

+ Joint first authors

* Address correspondence to venky@inference.net

With anecdotal reports of viral shedding from COVID-19 patients for several weeks, there is a need to quantify the prevalence of patients who are persistently SARS-CoV-2 PCR positive. Here, we characterize the temporal distribution of diagnostic SARS-CoV-2 PCR outcomes from nasopharyngeal swabs and associated EHR-derived features over two months for 874 COVID-19 patients with longitudinal data. Among a cohort of 379 COVID-19 patients with at least one positive follow-up SARS-CoV-2 PCR test, 53 patients remain SARS-CoV-2-positive after four weeks of initial diagnosis. Surprisingly, a majority of COVID-19 patients that are persistently PCR positive are not hospitalized (40 of 53 patients), and have no enrichments among symptoms, demographics, or medical history. In a cohort of 370 COVID-19 patients that transition to a confirmed PCR negative status, the upper bound of PCR positive duration has a mean of 21.2 days with standard deviation of 9.3 days. Of the 81 COVID patients with serologic testing, 68 patients have developed anti-SARS-CoV-2 IgG to date, with a mean upper bound of time to seroconversion of 38.1 days (95% C.I. = 35.2-41.1 days). Given that persistently positive PCR tests and serologic tests do not necessarily imply replication competent virus and neutralizing immunity respectively, there is need for quantitative assays such as droplet digital PCR (ddPCR) that can help estimate viral load in non-hospitalized COVID-19 patients. This study motivates the advancement of a platform linking longitudinal diagnostic and serologic testing data with real-time epidemiological data, towards proactively managing emerging hotspots of COVID-19 community transmission.

Introduction

As COVID-19 continues to rage globally with over 5 million confirmed infected individuals and 300,000 deaths¹, the world is grappling with the dual challenge of stemming the tide of the current pandemic and planning for reopening the economies in the post-COVID phase. Currently, there are over a million patients that have recovered from COVID-19¹, and some governments have suggested that antibody-based tests in recovered individuals can be used as the basis for an “immunity passport”² to travel or return-to-work assuming that they are protected against re-infection. However, there are also emerging reports of viral shedding for many days post-

recovery, as evidenced from PCR tests on stool samples³ and recurrent SARS-CoV-2-positive PCR tests in “cured” patients⁴.

In addition to routine RT-PCR assays that are the gold standard for COVID-19 clinical diagnosis, recent studies have suggested droplet digital PCR (ddPCR, dd-PCR or dPCR) as a more sensitive assay for quantifying viral load in early infection stages and detecting replication competent virus during any subsequent minimal residual disease phases^{5,6}. The cycle threshold (CT) values from SARS-CoV-2 RT-PCR assays has also been correlated with culture positivity rate to suggest that CT values above 33-34 may no longer harbor replication competent virus⁷.

The general lack of quantification of infection duration, viral shedding, and potential for transmission necessitates longitudinal monitoring of viral clearance in COVID-19 patients. Such an analysis has the potential to help inform epidemiological strategies to help ‘flatten the curve’ within communities most affected by the ongoing pandemic, and also help shape the evolving guidelines from states and governments regarding the duration of self-quarantining among COVID-19 patients⁸.

Results

Between February and May 2020, 74,993 individuals underwent routine SARS-CoV-2 PCR testing at the Mayo Clinic hospitals in Minnesota, Arizona and Florida, and the associated Mayo Clinic Health System (**Figure 1a**). 12,445 individuals (16.6%) were subjected to the PCR test more than once, with most of these individuals ($n = 11,474$) subjected to 2 or 3 PCR tests each (**Figure 1a**). Of all the individuals tested, 2,239 patients tested SARS-CoV-2-positive at least once during the study period (henceforth, COVID_{pos}) (**Figure 1b**). The age distributions in the context of hospitalization, intensive care unit (ICU) admission, and mortality status are shown for COVID_{pos} patients in **Figure 1c-f**. Notably, over 50% of the COVID_{pos} patients in this study are in the age group of 0-40. The pattern of increased hospitalization, ICU admissions and death in the elderly compared to the younger populations is consistent with previous studies of COVID-19 patient demographics⁸⁻¹⁰.

Among the 2,239 COVID_{pos} patients, 874 patients (39%) were subjected to two or more PCR tests, and 379 patients (16.9%) had at least two SARS-CoV-2-positive tests (**Figure 1b,g**). It is noted that 537 of 2,239 COVID_{pos} patients were administered at least two additional PCR tests after their initial diagnostic test, with 108 patients oscillating from SARS-CoV-2-positive to SARS-CoV-2-negative and back to SARS-CoV-2-positive status one or more times (**Figure 1h**).

Despite the caveats of routine RT-PCR assays not confirmatory of replication competent virus as noted previously, the availability of these longitudinal PCR test results and their associated Electronic Health Record (EHR), provides an excellent opportunity to quantify the persistence of SARS-CoV-2-positive PCR results. Specifically, we aimed to quantify for each patient – (1) a *lower bound of infection duration*, defined as the time in days between the first and last positive SARS-CoV-2 PCR tests, and (2) an *upper bound of infection duration*, defined as the time in days between the first positive PCR test and the second negative PCR test after which there are no further positive PCR tests (**Figure 2a**). The lower bound captures the most intuitive estimate of infection duration, at least from the standpoint of SARS-CoV-2 PCR positivity.

Nevertheless, our quantification of the upper bound is motivated by recent reports of high false-negative rates for SARS-CoV-2 PCR tests¹¹, our own observation of oscillations in serial PCR testing outcomes (**Figure 1h**), and the requirement for healthcare workers to observe negative PCR results on two consecutive days to meet the CDC “Return to Work” criteria⁸.

COVID-19 patients whose lower bound of infection duration is greater than four weeks (28 days) are hereafter referred to as patients that are ‘persistently PCR positive’. For the 370 COVID_{pos} patients that switched to a confirmed negative status, i.e. two negative SARS-CoV-2 PCR tests following the last positive SARS-CoV-2 test, the distribution of the upper bound of infection duration has a mean of 21.2 days and a standard deviation of 9.3 days (**Figure 2b**).

Of the 379 COVID_{pos} patients with at least two PCR positive results, interestingly, 53 patients (14%) are persistently PCR positive (**Figure 2c**), and strikingly the majority of these patients are not hospitalized. Based on the analysis of all the available positive SARS-CoV-2 IgG antibody tests (n = 68 patients), the upper bound of time to IgG-seroconversion from initial PCR diagnostic testing has a mean of 38.1 days (95% confidence interval: 35.2-41.1 days; **Figure 3a**). Here, we consider this analysis an “upper bound”, rather than a definitive time to seroconversion, as each patient may have experienced IgG seroconversion prior to the date when the serology test was actually administered. Based on the limited longitudinal real-world data available for IgG seroconversion, this upper bound is the best estimate we are able to obtain at this juncture. Despite this caveat, a few patients are noted to turn IgG-seropositive around 10 days post their initial SARS-CoV-2-positive PCR diagnosis date. The finding that the time to IgG seroconversion is shorter than the lower bound of infection based on PCR tests, suggests that COVID-19 patients may potentially continue to shed viral RNA while generating IgG antibodies (**Figure 3b**). It is important to re-emphasize that a persistent SARS-CoV-2-positive PCR test is *not* indicative of long-term replication-competent virus^{12,13} and also that SARS-CoV-2 IgG seropositivity is not confirmatory of neutralizing immunity. The assessment of viral loads by methods that evaluate the Ct intervals of routine RT-PCR assays or employ droplet digital PCR (ddPCR) assays^{5,6} would help inform the significance of the real-world evidence reported in this study. Similarly, the assessment of whether any of the IgG and IgM antibodies generated are able to neutralize the SARS-CoV-2 surface proteins (spike, envelope, membrane) or the nucleocapsid protein¹⁴ would add an immunological lens to interpret the seroconversion upper bounds noted in this study. Taken together, such additional research would help inform whether current CDC guidelines of 10 days self-quarantining for asymptomatic patients may be broadly satisfactory, including for patients that are noted to be persistently SARS-CoV-2 PCR positive by our study⁸.

Examining the factors that may have warranted follow-up SARS-CoV-2 PCR testing does not provide any obvious explanation. For instance, patients that are persistently PCR positive do not seem to be enriched for health care practitioners or have any discernible underlying condition. Despite social distancing norms and rigorous adherence to self-quarantining, some of the asymptomatic COVID-19 patients with protracted SARS-CoV-2-positive PCR tests who also shed virus as determined by ddPCR testing or CT interval quantification from routine RT-PCR tests, may be considered as increasing the odds of unintended community transmission

In order to better understand whether COVID-19 patients that are persistently SARS-CoV-2 PCR positive display any distinctive or noteworthy symptoms, we defined a control cohort of COVID-19 patients with an *upper bound of infection duration* between 1 to 13 days. We compared the COVID-19 patients that are persistently PCR positive with this control cohort by analyzing 269 commonly occurring clinical features out of over 15,000 possible features that were extracted from various structured databases constituting the COVID_{pos} patient's Electronic Health Records (EHRs) between the February-May 2020 study period. These EHR databases examined include, but are not limited to, diagnosis, ICD codes, medication history, immunization records, procedures, vitals, lab tests, and demographics (*see Methods*). Surprisingly, we do not find any significant distinguishing clinical features for COVID-19 patients who are persistently PCR positive. While this preliminary observation has to be monitored as more COVID-19 patients' longitudinal data are incorporated into our analytical framework, at this juncture, it appears that the majority of the patients that are persistently SARS-CoV-2 PCR positive may not have significant symptomatology that could have otherwise prompted their clinical follow-up.

Discussion

A recent study from China of 74 COVID_{pos} patient's fecal samples and respiratory swabs observed SARS-CoV-2-positive swabs with a mean duration of 15.4 days and standard deviation of 6.7 days from the first symptom onset¹⁵. In this study, we have shown that COVID-19 patients that are persistently PCR positive are predominantly not hospitalized and potentially asymptomatic, thus underlining the importance of understanding the temporal dynamics of viral load, the duration of infectivity, and the likelihood of community transmission. Studies focusing on the temporal profiles of viral shedding suggest that the viral loads are highest at the symptom onset which decreases monotonically towards detection limit around day 21^{13,16} and that live virus could no longer be cultured after day 8, leading to the hypothesis that SARS-CoV-2 infectiousness may decline from the time of symptom onset^{12,13}. Whether such experimental results are generalizable to all COVID-19 patients that are persistently PCR positive is an important follow-up question stemming from this study. Although the SARS-CoV-2-positive PCR tests by no means causally implicate replication-competent virus, the presence of viral RNA for several weeks from initial infection certainly warrants longitudinal monitoring of the viral load, as mentioned previously^{5,7}. Nonetheless, the question still remains as to why some COVID_{pos} patients harbor viruses or viral RNA for far longer than other COVID_{pos} patients. Additional research into the immunological, microbiome, environmental, immunization, and other factors associated with persistent SARS-CoV-2 PCR positive status is necessary to help contextualize the implications of our clinical observations.

It may be noted that the clinical sensitivity of SARS-CoV-2 PCR tests has been debated to some extent¹⁷, and certainly there are anecdotal examples from our own clinic experience where critical ill COVID-19 patients can switch from a COVID_{pos} status to a COVID_{neg} status within a short period of time. To robustly enable scientific assessment of the sensitivity of the routine RT-PCR testing data analyzed here, we summarized the entire pattern of serial PCR outcomes across the 2,239 COVID-19 patients in this study. This analysis shows that the vast majority of the COVID-19 patients subjected to our RT-PCR assays do produce consistent results, as determined by multiple contiguous PCR tests resulting in the same outcome. There is a small

minority of COVID-19 patients where aberrant switching of PCR outcomes is indeed observed, with the underlying reasons undetermined at this juncture.

Several factors could influence the persistent SARS-CoV-2 PCR positive status. Replicative fitness of a given virus is one of them. For instance, in HIV, not all viruses replicate equivalently, and differences may be attributable in part to polymorphisms in different genes¹⁸. For SARS-CoV-2 there are reports of different polymorphisms that have been speculated to impact disease severity or transmissibility, such as the D164G mutation in the spike (S) protein¹⁹. Another factor that may influence the persistence of PCR positivity could be the timing and quantum of immune response. For example, given the role of IFN response in viral shedding²⁰, early IFN response is likely to be beneficial and reduce shedding, whereas late IFN response may be deleterious and delay clearance. Another potential factor to consider is the T cell response²¹. When T cells express high levels of different effector mechanisms (e.g. Perforin/granzyme B, IFN, FasL/ TRAIL etc), they are thought to work better than if they produce only one effector pathway.

Our findings raise important additional follow-up questions. Recent studies have identified coagulation associated issues in COVID-19 patients^{22,23}. Building on our findings, it may be interesting to examine the rate of change of coagulation signals (e.g. by longitudinal lab testing of platelet count, fibrinogen levels, d-dimer values) and the levels of immune cells (e.g. neutrophils, monocytes, basophils, lymphocytes) in COVID-19 patients that are persistently PCR positive versus patients who are able to more rapidly eliminate the virus. It is also intriguing to examine how the duration of SARS-CoV-2 PCR positive status correlates to the rate of IgG seroconversion and the presence of effective humoral immunity as measured by neutralizing antibodies. While our study certainly calls for more prolonged longitudinal testing of viral RNA as well as live viruses, it remains to be seen how practical this is, given reports of insufficient availability of test kits²⁴.

Given the significant value of longitudinal SARS-CoV-2 PCR testing, efforts are underway to develop an epidemiological tracking platform that integrates the SARS-CoV-2 PCR testing data at the county-level across states that have published this information (Figure 4). One of the applications in this platform ('Measures app') enables measuring geographical and temporal trends of SARS-CoV-2 test positivity - i.e. positive SARS-CoV-2 PCR tests as a fraction of the total SARS-CoV-2 PCR tests conducted by each county. Given the presence of persistent SARS-CoV-2 PCR positive patients across different counties, such a Precision COVID-19 platform may aid in the detection of "hot spots" of SARS-CoV-2 infectivity towards guiding the appropriate allocation of PPE resources and diagnostic kits to stem community transmission proactively.

The significant prevalence of persistently PCR positive COVID-19 patients suggests that prolonged monitoring of viral loads in COVID-19 patients, together with sustained periods of low SARS-CoV-2 test positivity, could jointly help inform when to reopen each county's operations. Ultimately, understanding the personalized factors underlying the duration of SARS-CoV-2 positive status in COVID-19 patients will be important to better inform such return-to-work strategies that are underway within large enterprises, as well as across states and countries.

Methods

SARS-CoV-2 diagnostic tests conducted by Mayo Clinic hospitals and health system

In regards to RT-PCR methodology, for Mayo Clinic patients seen in the Rochester MN hospital, a pair of SARS-CoV-2 diagnostic tests were employed^{25,26}. The Roche Cobas diagnostic test was employed by the Mayo Clinic's Florida hospitals, and the Abbott diagnostic test was used by the Mayo Clinic's Arizona hospitals²⁷. These SARS-CoV-2 PCR tests amplify different segments of the viral genome, but are considered largely equivalent from the perspective of their analytical performance. The LOINC code of the SARS-CoV-2 IgG test analyzed is 94563-4²⁸.

Statistical analysis of longitudinal SARS-CoV-2 RT-PCR results

The features considered in the analysis to differentiate the COVID-19 patients that are persistently PCR positive include all structured entities from the EHR, including but not limited to demographics, diagnosis, ICD codes, medication history, immunization record, procedures, vitals and lab tests. Any feature which is enriched significantly towards either shorter durations (less than 14 days between first positive to second negative test, as depicted in **Figure 2b**) or longer durations (greater than or equal to 28 days between first positive to recent/final positive test, as depicted in **Figure 2c**) was noted down. During the observation period ($n = 116$; 53 persistently PCR positive patients; 63 control patients), there were 269 EHR-derived features that were considered, including potentially prior to each patient's COVID-19 diagnosis. The 2-proportion z-test p-value (after BH adjustment for multiple hypothesis correction) was used to assess the differences of each feature between the persistently PCR positive patients and the control cohort, defined as those COVID-19 patients with an *upper bound of infection duration* between 1 to 13 days. The procedure was as follows:

1. Filter by features which are present in overall at least 10% of the patients we're looking at.
2. It's possible that there is a bias of more overall features towards the long-term or control cohort. We are not interested in this bias. To account for this, for each feature, we compute the "baseline" proportion difference, i.e. the weighted mean proportion of persistently positive patients that are positive for that feature minus the weighted mean proportion of control cohort which is positive for that feature. Call this baseline difference O (we have one such O for each feature).
3. Perform a 2-proportion z-test for whether the difference between feature-positive rate in the long-term cohort and feature-positive rate in the control cohort is significantly different from the baseline O .
4. Adjust these p -values for multiple hypotheses using the Benjamini-Hochberg procedure (with FDR controlled at 0.1 level).

We repeated the above procedure for slightly different underlying data as well; in particular, we re-ran on the following variants:

- i. We filtered to look only at patients who were not hospitalized (as those would be of most concern).
- ii. Each binary feature (phenotype, lab test, etc) occurred at a particular day in the patient's record. We filtered by only those features which occur 0, 21 or 28 days following diagnosis.

- iii. Variations (i) and (ii) together

Statistical analysis employed in the Precision COVID-19 platform

The following metrics are used as part of this epidemiological tracking application:

Total Population: number of people that live in a given territory. This is based on USA Census data.

Tests: number of patients tested for SARS-CoV-2 (PCR testing) to date. This information is based on Mayo Clinic Labs testing.

Positive Tests: number of patients tested for SARS-CoV-2 (PCR testing) that have been positive to date.

%Positive: fraction of patients tested (PCR testing) that have been positive for SARS-CoV-2 to date. The color schema used was based on worldwide benchmarks using South Korea as a positive reference and New York as a negative reference.

Relative Testing: the number of tests per capita in a territory divided by the number of tests per capita in the region where that territory belongs to. For example, a county with a Relative Testing of 2.0 means that such county has performed twice as many tests per capita relative to the entire state.

Cases (Gov't): this is the number of SARS-CoV-2 positive patients in the territory as reported by each government or state agency.

Relative Incidence: number of SARS-CoV-2 cases per capita in a territory (as reported by government/state agencies) divided by the number of cases per capita in the region. For example, a county with a Relative Incidence of 2.0 means that such a county has had twice as many SARS-CoV-2 cases per capita relative to the entire state.

Testing-to-Incidence Ratio: this is the ratio between Relative Testing and Relative Incidence at the county level.

Acknowledgments

The authors thank Mathai Mammen, Murali Aravamudan, Patrick Lenehan, Will Gibson, Jacob Martin, Travis Hughes, and Tyler Wagner for their helpful feedback on this research.

Conflict of Interest Statement

ADB is supported by Grants AI 110173 and AI120698 from NIAID, 109593-62-RGRL from Amfar, and the HH Sheikh Khalifa Bin Zayed Al-Nahyan named professorship from Mayo Clinic. ADB is a consultant for Abbvie, is on scientific advisory boards for Nference and Zentalis, and is founder and President of Splissen therapeutics. One or more of the investigators associated with this project and Mayo Clinic have a Financial Conflict of Interest in technology used in the research and that the investigator(s) and Mayo Clinic may stand to gain financially from the successful outcome of the research. The title of the project is – IRB 20-003334: “CDAP – Study of COVID-19 patient characteristics with augmented curation of Electronic Health Records (EHR) to inform strategic and operational decisions”. This research has been reviewed by the Mayo Clinic Conflict

of Interest Review Board and is being conducted in compliance with Mayo Clinic Conflict of Interest policies.

References

1. Home. *Johns Hopkins Coronavirus Resource Center* <https://coronavirus.jhu.edu/>.
2. Phelan, A. L. COVID-19 immunity passports and vaccination certificates: scientific, equitable, and legal challenges. *Lancet* **395**, 1595–1598 (2020).
3. Chen, Y. *et al.* The presence of SARS-CoV-2 RNA in the feces of COVID-19 patients. *J. Med. Virol.* (2020) doi:10.1002/jmv.25825.
4. Qu, Y.-M., Kang, E.-M. & Cong, H.-Y. Positive result of Sars-Cov-2 in sputum from a cured patient with COVID-19. *Travel Medicine and Infectious Disease* vol. 34 101619 (2020).
5. Suo, T. *et al.* ddPCR: a more accurate tool for SARS-CoV-2 detection in low viral load specimens. *Emerg. Microbes Infect.* 1–30 (2020).
6. Dong, L. *et al.* Highly accurate and sensitive diagnostic detection of SARS-CoV-2 by digital PCR. doi:10.1101/2020.03.14.20036129.
7. La Scola, B. *et al.* Viral RNA load as determined by cell culture as a management tool for discharge of SARS-CoV-2 patients from infectious disease wards. *Eur. J. Clin. Microbiol. Infect. Dis.* **39**, 1059–1061 (2020).
8. CDC. Coronavirus Disease 2019 (COVID-19). *Centers for Disease Control and Prevention* <https://www.cdc.gov/coronavirus/2019-ncov/if-you-are-sick/end-home-isolation.html> (2020).
9. Richardson, S. *et al.* Presenting Characteristics, Comorbidities, and Outcomes Among 5700 Patients Hospitalized With COVID-19 in the New York City Area. *JAMA* (2020) doi:10.1001/jama.2020.6775.
10. Zhou, F. *et al.* Clinical course and risk factors for mortality of adult inpatients with COVID-19 in Wuhan, China: a retrospective cohort study. *The Lancet* vol. 395 1054–1062 (2020).
11. Kucirka, L. M., Lauer, S. A., Laeyendecker, O., Boon, D. & Lessler, J. Variation in False-Negative Rate of Reverse Transcriptase Polymerase Chain Reaction–Based SARS-CoV-2

- Tests by Time Since Exposure. *Annals of Internal Medicine* (2020) doi:10.7326/m20-1495.
12. Wölfel, R. *et al.* Virological assessment of hospitalized patients with COVID-2019. *Nature* **581**, 465–469 (2020).
 13. He, X. *et al.* Temporal dynamics in viral shedding and transmissibility of COVID-19. *Nat. Med.* **26**, 672–675 (2020).
 14. Zhou, G. & Zhao, Q. Perspectives on therapeutic neutralizing antibodies against the Novel Coronavirus SARS-CoV-2. *International Journal of Biological Sciences* vol. 16 1718–1723 (2020).
 15. Wu, Y. *et al.* Prolonged presence of SARS-CoV-2 viral RNA in faecal samples. *Lancet Gastroenterol Hepatol* **5**, 434–435 (2020).
 16. To, K. K.-W. *et al.* Temporal profiles of viral load in posterior oropharyngeal saliva samples and serum antibody responses during infection by SARS-CoV-2: an observational cohort study. *Lancet Infect. Dis.* **20**, 565–574 (2020).
 17. Vogels, C. B. F. *et al.* Analytical sensitivity and efficiency comparisons of SARS-COV-2 qRT-PCR primer-probe sets. *medRxiv* 2020.03.30.20048108 (2020).
 18. Natesampillai, S. *et al.* Patients with Discordant Responses to Antiretroviral Therapy Have Impaired Killing of HIV-Infected T Cells. *PLoS Pathog.* **6**, e1001213 (2010).
 19. Korber, B. *et al.* Spike mutation pipeline reveals the emergence of a more transmissible form of SARS-CoV-2. *bioRxiv* 2020.04.29.069054 (2020) doi:10.1101/2020.04.29.069054.
 20. Klinkhammer, J. *et al.* IFN- λ prevents influenza virus spread from the upper airways to the lungs and limits virus transmission. *Elife* **7**, (2018).
 21. Sridhar, S. *et al.* Cellular immune correlates of protection against symptomatic pandemic influenza. *Nat. Med.* **19**, 1305–1312 (2013).
 22. Pawlowski, C. *et al.* Longitudinal laboratory testing tied to PCR diagnostics in COVID-19 patients reveals temporal evolution of distinctive coagulopathy signatures. doi:10.1101/2020.05.21.20109439.

23. Levi, M., Thachil, J., Iba, T. & Levy, J. H. Coagulation abnormalities and thrombosis in patients with COVID-19. *Lancet Haematol* **7**, e438–e440 (2020).
24. Addressing Coronavirus Testing Bottleneck, Scientists Turn to RNA-Extraction-Free PCR. *GenomeWeb* <https://www.genomeweb.com/pcr/addressing-coronavirus-testing-bottleneck-scientists-turn-rna-extraction-free-pcr>.
25. Rodino, K. G. *et al.* Evaluation of Saline, Phosphate-Buffered Saline, and Minimum Essential Medium as Potential Alternatives to Viral Transport Media for SARS-CoV-2 Testing. *J. Clin. Microbiol.* **58**, (2020).
26. cobas® SARS-CoV-2 Test (for the COVID-19 Coronavirus) | Roche Diagnostics. *Diagnostics* <https://diagnostics.roche.com/us/en/products/params/cobas-sars-cov-2-test.html>.
27. Abbott RealTime SARS-CoV-2 Assay (EUA) | Abbott Molecular. <https://www.molecular.abbott/us/en/products/infectious-disease/RealTime-SARS-CoV-2-Assay>.
28. Website. <https://loinc.org/94563-4/>.

Figure Legends

Figure 1. Distributions of **(a)** number of PCR tests per individual, **(b)** number of PCR tests taken by COVID_{pos} patients, **(c)** age of COVID_{pos} patients, **(d)** age of hospitalized COVID_{pos} patients, **(e)** age of ICU-admitted COVID_{pos} patients, **(f)** age of deceased COVID_{pos} patients, **(g)** the number of patients by sequence of SARS-COV-2 PCR positive and negative results, and **(h)** the number of switches between COVID_{pos} and COVID_{neg} status in longitudinal testing of COVID_{pos} patients; box indicates the count of patients that switched from COVID_{pos} to COVID_{neg} and back to COVID_{pos} status at least once. **(c-f)** Compared to the overall COVID_{pos} patient population that includes a considerable proportion of 0-40 year old individuals (n = 2239, mean = 41.4 years, standard deviation = 19 years, median = 39 years), there is a shift to the older aged population among the hospitalized patients (n = 190, mean = 58.2 years, standard deviation = 18.9 years, median = 60 years), ICU patients (n = 77 patients, mean = 58.9 years, standard deviation = 14.8 years, median = 59 years), and deceased patients (n = 30 patients, mean = 83.5 years, standard deviation = 9.3 years, and median = 86.5 years).

Figure 2. Distribution of the COVIDpos patients by **(a)** duration between the day of diagnosis to first negative test after last positive test. **(b)** duration between the day of diagnosis to the last positive test.

Figure 3. Distribution of upper-bound of the duration to convert to sero-positive status based on SARS-CoV-2 IgG test and comparison to COVID_{pos} status based on SARS-CoV-2 IgG antibody test. (a) Histogram of duration (in days) between the day of diagnosis based on SARS-CoV-2 PCR test and day of seropositive status based on SARS-CoV-2 IgG test. (b) Comparison of sero-positive status (based on antibody test) and COVIDpos status (based on PCR test). Cases that are sero-positive and PCR positive are boxed.

Figure 4. The 'Precision COVID-19' platform that is being developed for real-time epidemiological surveillance of positive SARS-CoV-2 PCR tests conducted as a fraction of the total SARS-CoV-2 PCR tests conducted that day within each county is visualized herein.

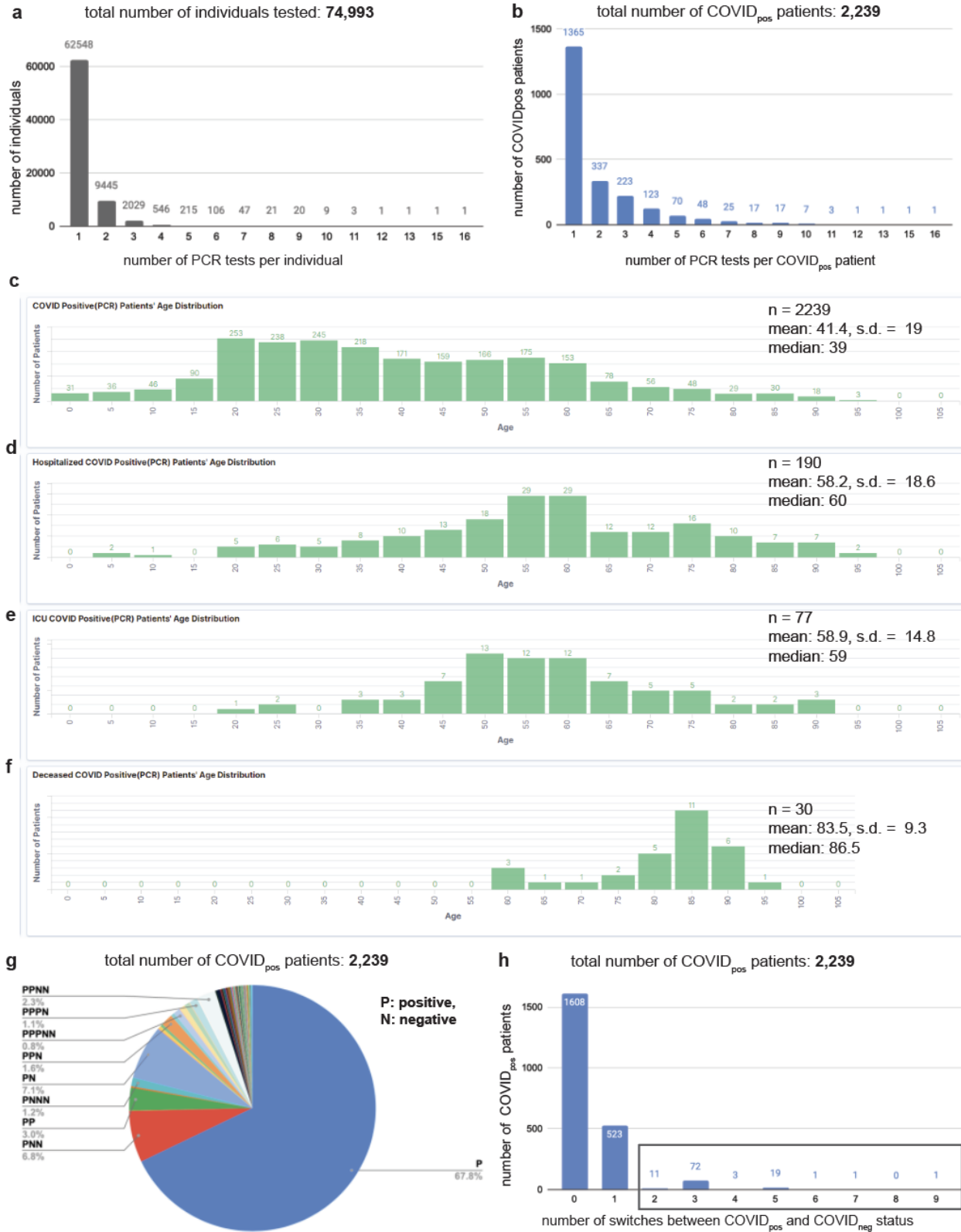
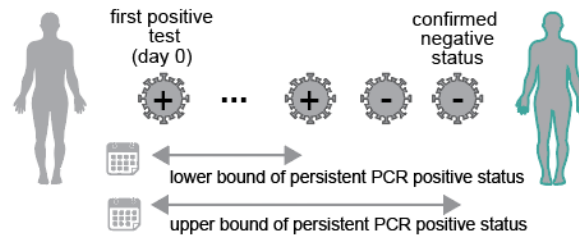
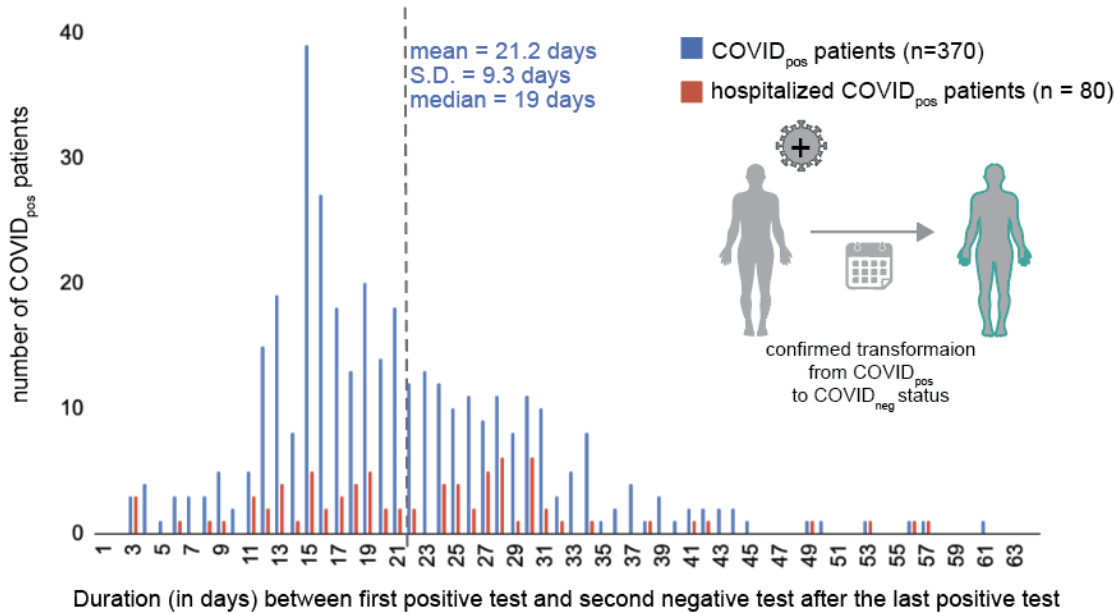


Figure 1

a Longitudinal testing in COVID-19 patients based on nasopharyngeal SARS-CoV-2 PCR tests



b Distribution of upper bound of persistent PCR positive status duration post diagnosis



c Distribution of lower bound of persistent PCR positive status duration post diagnosis

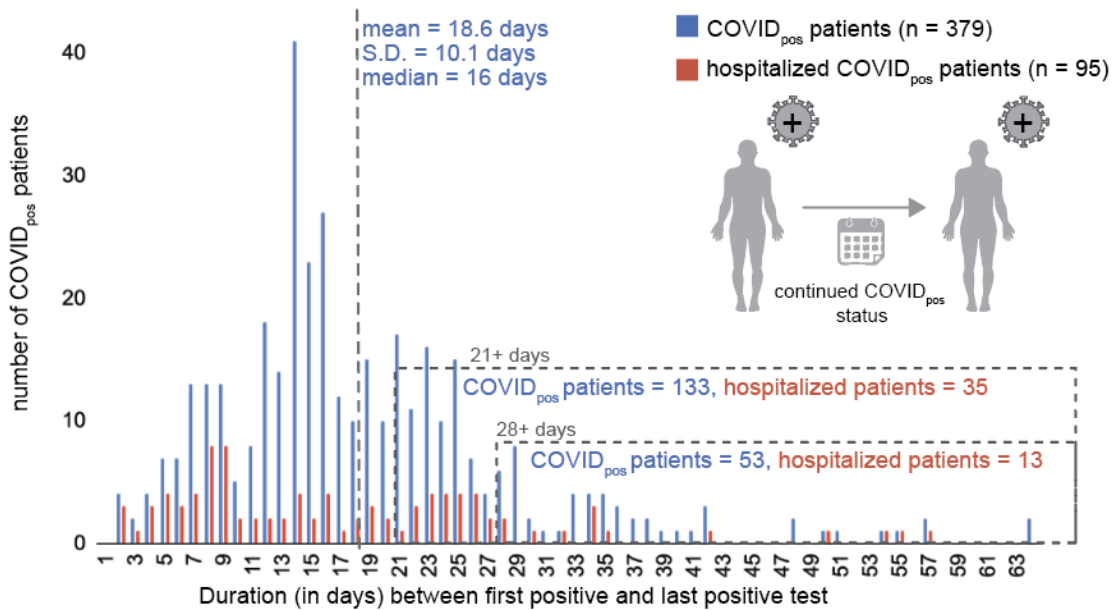
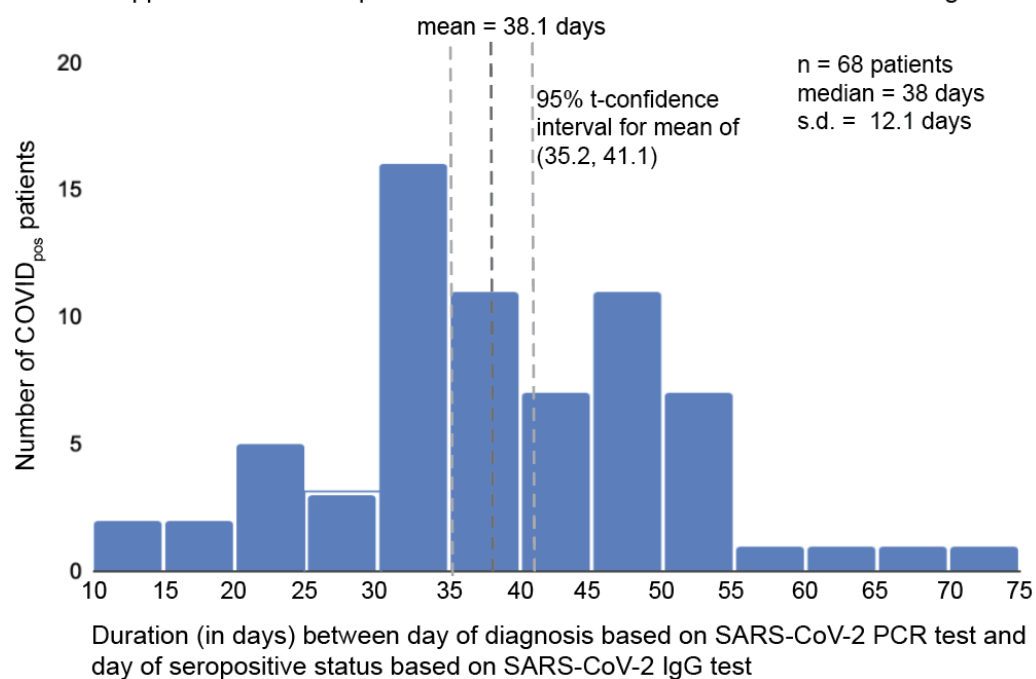


Figure 2

a Distribution of upper-bound of sero-positive transition duration based on SARS-CoV-2 IgG test



b Comparison of sero-positive status (based on antibody test) and COVID_{pos} status (based on PCR test)

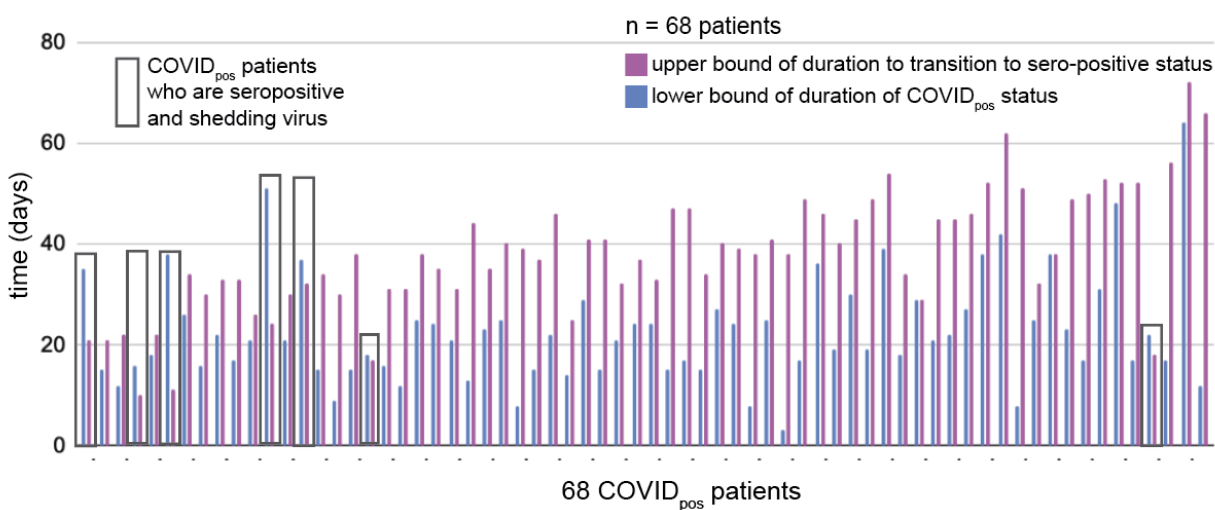


Figure 3

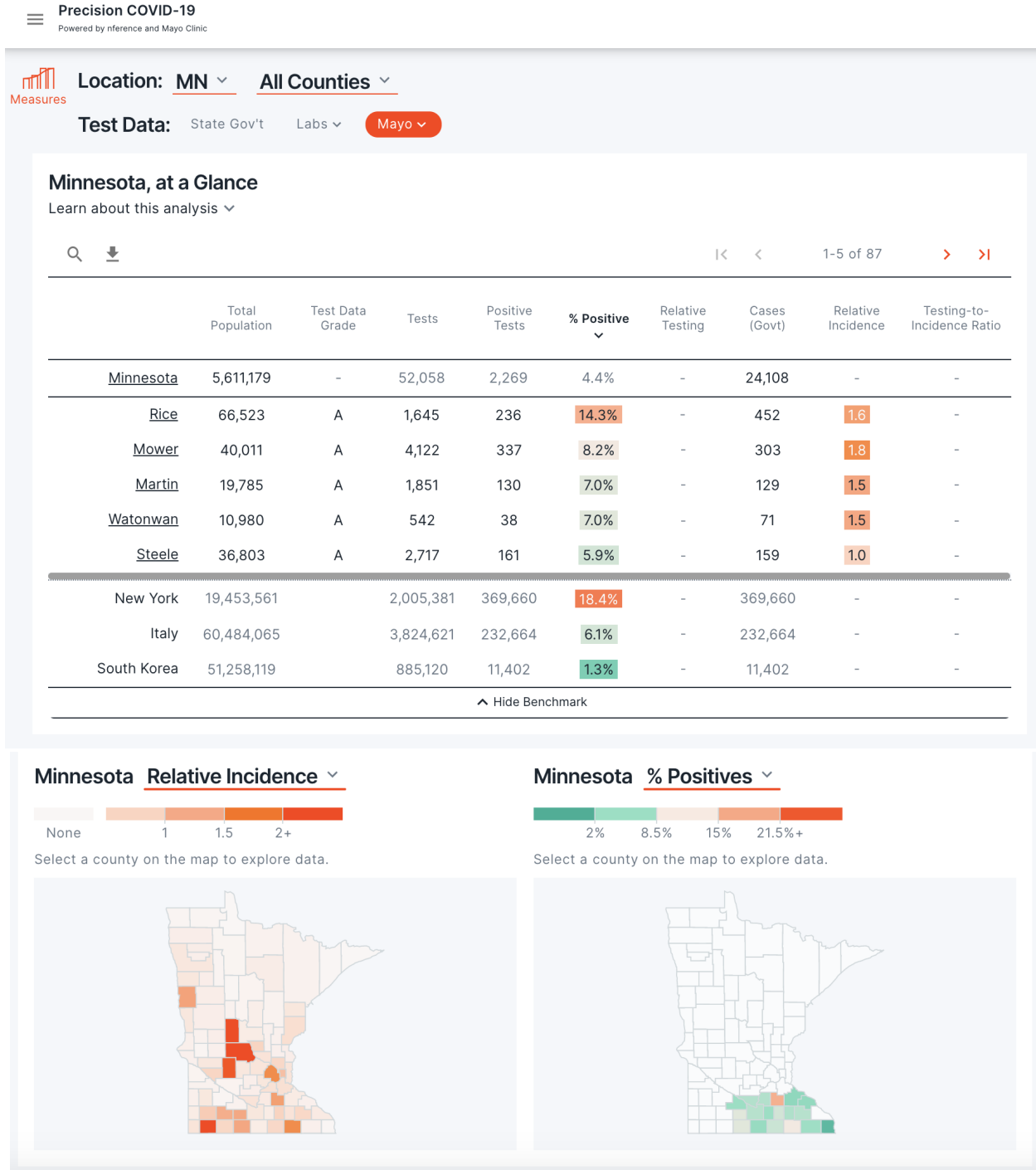


Figure 4