

Hand Washing Compliance and COVID-19: A Non-Participatory Observational Study among Hospital Visitors

Biniyam Sahiledengle^{1*}, Yohannes Tekalegn¹, Abulie Takele¹, Demisu Zenbaba¹, Zinash Teferu¹, Alelign Tasew¹, Tesfaye Assefa², Kebebe Bekele³, Abdi Tesemma³, Habtamu Gezahegn⁴, Tadesse Awoke⁵, Bruce John Edward Quisido²

¹Madda Walabu University Goba Referral hospital, Department of Public Health, Bale-Goba, Ethiopia

²Madda Walabu University Goba Referral hospital, Department of Nursing, Bale-Goba, Ethiopia

³Madda Walabu University Goba Referral hospital, Department of Surgery, Bale-Goba, Ethiopia

⁴Madda Walabu University Goba Referral hospital, Department of Physiology, Bale-Goba, Ethiopia

⁵University of Gondar, College of Medicine and Health Sciences, Department of Epidemiology and Biostatistics, Gondar, Ethiopia

* Corresponding Author

E-mail: biniyam.sahiledengle@gmail.com

ORCID: 0000-0002-1114-4849

19 Abstract

20 **Background:** Hand washing remains a key measure for intercepting the dispatch of the Coronavirus disease
21 (COVID-19). However, hand washing must be perpetuated properly using soap and water for at least 20
22 seconds. In response to the current COVID-19 pandemic, various hospitals have imposed mandatory hand
23 washing to everyone prior entering the facilities, and when leaving. This study aimed to assess the hand washing
24 compliance among visitors of a university referral hospital.

25 **Methods:** A non-participatory observational study was conducted in the main entrance of the hospital from April
26 27 to May 3, 2020, to measure hand washing compliance of its visitors. The quality of hand washing was
27 assessed via direct observation for compliance with the recommended World Health Organization (WHO) core
28 steps. Data were collected using Open Data Kit (ODK) mobile application.

29 **Results:** A total of 1,282 hospital visitors were observed, of which 874(68.2%) were males. Full hand washing
30 compliances were observed among 0.9% (95% CI: 0.4-1.4) of the visitors. Withal, there was no difference in the
31 compliances between genders (0.9% vs 0.7%, $P = 0.745$).

32 **Conclusion:** Despite the fact that proper hand washing with soap and water is proven to be one of the effective
33 ways in preventing the spread of COVID-19, a significant number of hospital visitors did not practice standard
34 hand washing procedures. Improvements in this measure are urgently needed in the face of the current COVID-
35 19 pandemic.

36

37 **Keywords:** Hand washing, Compliance, COVID-19, Ethiopia, Observation

38

39 **Background**

40 Hand washing is reckoned to be one of the paramount measures for preventing the transmissions of Severe
41 Acute Respiratory Syndrome (SARS)-CoV-2 virus, which causes the Coronavirus disease (COVID-19). Hand
42 washing is simple, cost-effective, and one of the first lines of defense in ceasing the spread of the current
43 pandemic. It must be done properly using soap and water for at least 20 seconds [1-3].

44 Respiratory infection caused by viruses like COVID-19 spread when mucus or droplets containing the virus
45 advances into the body through the eyes, nose, or throat. Most often, this betides through contact with
46 contaminated hands. The risk of COVID-19 transmission is also magnified when people come in contact with an
47 infected person, or when they abut surfaces that an infected person has contaminated [3]. Coronavirus subsist in
48 the hands may be effaced with handwashing using soap and water, and if it's done properly. If the hands are
49 virtuous, there will be a marginal chance that people can dispatch the virus to the eyes, nose, or mouth of other
50 people, or when they touch their faces [4]. Currently, there is a systematic review apropos hand washing and its
51 risk for respiratory infection, and it implied that hand cleaning can gash the risk of the infection by 16% [5]. It is
52 therefore paramount to wash the hands often and correctly to stop the spread of COVID-19 [1, 2, 6]. The
53 unerring way of hand washing requires five key steps: 1) wet both hands under clean running water; 2) stow a
54 liberal amount of soap to the front and back of the hands, as well as fingertips; 3) rub in between and around the
55 fingers; rub the back of each hand using the palm of the other hand; rub fingertips of each hand to the opposite
56 palm of the other hand, and rub each thumb clasped to the opposite hand for at least 20 seconds; 4) rinse
57 thoroughly under running water, and dry hands with clean paper/towel; 5) turn off the water using a paper towel
58 [1,7,8].

59 Compliance of the community with the recommended hand hygiene practices has paramount importance in
60 averting the spread of COVID-19. Be that as it may, there are ample attestations that in umpteen settings, hand
61 washing behaviors linger as an area which requisites improvement [1, 9-12]. A recent study by Pogrebna et al
62 found that a country's hand washing culture is a very compelling predictor of the degree of COVID-19 spread
63 [12].

64 In response to COVID-19, the World Health Organization (WHO) has strongly recommended that all the state
65 members proffer public hand hygiene stations, and ensuring obligatory usage of these when visitors or personnel
66 enter and leave the facilities, such as hospitals and health centers[2]. Ethiopia reported its first case of COVID-
67 19 on 13th March 2020 [13]. From that time on, the country aggressively engaged and communicated different
68 COVID-19 prevention measures to the general public. As part of its preventive proceedings, the public was
69 notified to regularly wash their hands with soap and water for 20 seconds using the recommended steps.
70 Furthermore, all hospitals should ensure the availability of hand washing stations in their main entrances, and
71 that everyone should wash their hands before entering the facilities and when leaving [14]. Still and all, the
72 acceptance of hospital visitors toward hand washing as a routine habit – and their compliances with the
73 prescribed hand washing techniques were uncertain. In lieu of these, concerns about the poor hand hygiene
74 culture in Ethiopia – and their negative implications in the control of COVID-19 were the motivations behind the
75 undertakings of this study. Accordingly, this study assessed the hand washing compliances among the visitors of
76 Madda Walabu University Goba Referral Hospital, Southeast of Ethiopia.

77 **Methods**

78 **Study Design and Setting**

79 A non-participatory observation study was conducted for a period of one week (from April 27 to May 3, 2020) to
80 determine the magnitude of hand washing compliance (HWC) of the visitors entering Madda Walabu University
81 Goba Referral Hospital. It is the only referral hospital in Bale Zone, Southeast Ethiopia. Data were collected
82 through direct observations and were executed in the main entrance of the referral hospital for seven
83 consecutive days to appreciate a complete picture of the weekly HWC among its visitors. The observations were
84 imposed in the morning and afternoon (8:30-11:00 A.M and 2:00 -4:30 P.M). These times were chosen because
85 they were the busiest visiting hours. Due to the current COVID-19 pandemic, hand washing facilities and the
86 necessary resources (plain soaps and clean, running waters) were available at the main entrance of the referral
87 hospital. Accordingly, visitors were obliged to wash their hands upon arrival on the hospital premises, and when
88 leaving. Furthermore, large 1.2 m² hand washing signs were stationed at the hospital entrance to remind visitors
89 about washing their hands.

90 **Study Participants and Data Collection Procedures**

91 All visitors who washed their hands before entering and when leaving the referral hospital were observed.
92 Anyone who needs assistance/instruction in washing his/her hands was excluded. The observation was
93 conducted using the recommended WHO hand washing tool [7]. Trained data collectors performed all
94 observations and recorded the data using (Open Data Kit (ODK) Collect mobile Apps. To ensure data quality, the
95 data collectors were informed to observe one visitor at a time. They also made sure that the visitors did not
96 recognize them in order for the observant to display natural handwashing behaviors. Each time, two data
97 collectors were involved, and they stand beside the washing area pretending to wait for someone else, or
98 sometimes, they let their shoes be cleaned at the nearby shoe-cleaning stands.

99 Prior to the beginning of the study, all data collectors were extensively trained regarding data collection protocols
100 and hand washing steps. To establish the inter-rater reliability, a testing session was imposed to data collectors
101 by simulating hand washing demonstrations by random individuals while they observe them. And the interrater
102 reliability was determined to be 0.86.

103 As recommended by the WHO, the study recorded and analyzed the recommended hand washing steps: 1)
104 wetting the hands with water, 2) applying enough amount of soap to cover all hand surfaces, 3) rubbing the
105 hand's palm with the other palm - rotary movement, 4) rubbing the right palm over the left dorsum with interlaced
106 fingers, and vice versa, 5) again palm to palm rubbing with fingers interlaced, back of fingers to opposing palms
107 with fingers interlocked, 6) rotational rubbing of left thumb clasped in the right palm, and vice versa, 7) rotational
108 rubbing, backward and forward with clasped fingers of the right hand in the left palm, and vice versa, 8) rinsing
109 the hands with water, 9) drying them with a clean item/towel, and finally, 10) using a clean item when turning off
110 the faucet [7].

111 **Operational Definition**

112 **Full compliance:** wetting of hands, covering wet hands with soap, scrubbing all surfaces, including palms, back
113 of the hands, in between fingers, and under the fingernails for about 20 seconds, rinsing well with running water,
114 and finally, dry of hands with a clean cloth or by waving in the air [1].

115 **Partial compliance:** washing both hands with soap specifically, wetting hands, covering wet hands with soap,
116 washing right palm over left dorsum with interlaced fingers and vice versa, and palm to palm rubbing with fingers
117 interlaced, rinsing well with running water, and finally, drying using a clean cloth for about 20 seconds.

118 **Minimal compliance:** washing both hands with soap for about 20 seconds, which only includes wetting the
119 hands, covering wet hands with soap, and rinsing well with running water.

120 **Non-compliance:** rinsing both hands with water only.

121

122 **Statistical Analysis**

123 All observed data were collected using ODK and were exported to the Statistical Package for the Social
124 Sciences (SPSS) 20.0 software program for analysis. Based on the operational definitions mentioned, the level
125 of hand washing compliance was computed. Descriptive statistics were computed to summarize the study
126 findings. To test whether hand washing compliance varied across the weekdays and gender, the Chi-square test
127 (χ^2) was used. A p-value < 0.05 was considered as statistically significant. Finally, data were presented in tables
128 and graphs, as appropriate.

129

130 **Ethical approval and considerations**

131 The study was approved by ethical review committee of Madda Walabu University Goba Referral Hospital
132 Research and Technology Transfer Office and permission was sought from Goba Referral Hospital medical
133 director office (*Ref.no 01/2/12594*). Data collectors were worn protective face masks and kept reasonable
134 physical distance during data collection. The data were collected in a private condition and kept confidential.

135

136 Results

137 A total of 1,282 visitors were observed, of which 874 (68.2%) were males and 408 (31.8%) were females. Six
138 hundred thirty (47.8%) visitors were observed in the morning schedules (**Table 1**).

139 **Table 1: The Characteristics of the Study Participants and their Distributions Over the Weekdays in Goba**
140 **Referral Hospital, May 2020 (n=1,282)**

| Variable | Category | Frequency | Percent |
|----------------------|-----------|-----------|---------|
| Sex | Male | 874 | 68.2 |
| | Female | 408 | 31.8 |
| Observation Sessions | Afternoon | 669 | 52.2 |
| | Morning | 613 | 47.8 |
| Days of the Week | Monday | 226 | 17.6 |
| | Tuesday | 132 | 10.3 |
| | Wednesday | 231 | 18.0 |
| | Thursday | 171 | 13.3 |
| | Friday | 156 | 12.2 |
| | Saturday | 225 | 17.6 |
| | Sunday | 141 | 11.0 |

141

142 Hand Washing Compliance

143 The descriptive analysis of the hand washing steps was shown in **Table 2**. The median (Q1-Q3) duration of hand
144 washing was 22 seconds (14-34). In total, only 0.9% (95%CI: 0.4-1.4) of the study participants were fully
145 compliant with the recommended hand washing techniques. A significant number of hospital visitors did not
146 wash their hands properly or they have washed their hands in less effective ways (minimal, partial, or non-
147 compliant) (**Fig 1**). The areas of the hand most neglected during hand washing among hospital visitors were
148 presented in **Fig 2**.

149 **Fig 1:** Bar graph including hand washing compliance of hospital visitors at the entrance of Madda Walabu
150 University Goba Referral Hospital, Southeast Ethiopia, May 2020 (n=1,282)

151 **Fig 2:** Images of most commonly missed hand washing areas identified among hospital visitors at the entrance
152 of Madda Walabu University Goba Referral Hospital, Southeast Ethiopia, May 2020 (n=1,282)

153

154 **Table 2: Hand washing compliance in response to COVID-19 pandemic among Study participants of**
 155 **Madda Walabu University Goba Referral Hospital, Southeast Ethiopia (n=1,282)**

| Hand Washing Practice | Frequency (yes) | Percent | 95%CI |
|---|-----------------|---------|-----------|
| Wet hands with water | 1271 | 99.1 | 98.7-99.6 |
| Apply enough soap to cover all hand surfaces | 952 | 74.3 | 71.8-76.8 |
| Rub hands palm to palm | 607 | 47.3 | 44.5-50.1 |
| Right palm over left dorsum with interlaced fingers and vice versa | 176 | 13.7 | 12.0-15.7 |
| Palm to palm with fingers interlaced | 197 | 15.4 | 13.3-17.4 |
| Backs of fingers to opposing palm with fingers interlocked | 71 | 5.5 | 4.3-6.8 |
| Rotational rubbing of left thumb clasped in the right palm and vice versa | 64 | 5.0 | 3.8-6.3 |
| Rotational rubbing, backward and forward with clasped fingers of the right hand in left the palm and vice versa | 65 | 5.1 | 3.9-6.3 |
| Rinse hands with water | 1102 | 86.0 | 84.0-87.9 |
| Use towel/ clean item to turn off the faucet | 185 | 14.4 | 12.6-16.3 |
| Duration of hand washing, Median (Q1-Q3): 22 seconds (14-34) | | | |
| < 20 seconds | 596 | 46.5 | 43.9-49.0 |
| ≥ 20 seconds | 686 | 53.5 | 51.0-56.1 |
| The Overall Hand Washing Compliance Score | | | |
| Full compliance with hand washing | | | |
| Yes | 11 | 0.9 | 0.4-1.4 |
| No | 1271 | 99.1 | 98.6-99.6 |
| Partial compliance to hand washing [#] | | | |
| Yes | 37 | 2.9 | 2.0-3.8 |
| No | 1245 | 97.1 | 96.2-98.0 |
| Minimal compliance to hand washing [#] | | | |
| Yes | 605 | 47.2 | 44.4-49.9 |
| No | 677 | 52.8 | 50.1-55.6 |
| Non-compliance to hand washing [#] | | | |
| Yes | 258 | 20.1 | 17.8-22.3 |
| No | 1024 | 78.9 | 77.7-82.2 |

156 [#] Visitors did not wash their hands properly or in a less effective way as described in the operational definition
 157 section

158

159 **Relationship between Hand Washing Compliance and Associated Variables**

160 As shown in **Table 3**, there is no statistically significant difference between male and female hospital visitors
 161 concerning hand washing compliance (full and partial compliance). Significant differences were noted in hand
 162 washing compliance (full compliance) in between the weekdays (p=0.03) (**Additional File 2**). No significant
 163 differences in hand washing were noted based on time of day (p=0.875) (**Additional File 2**).

164 **Table 3: The association between hand washing compliance and sex of the respondents of Madda**
 165 **Walabu University Goba Referral Hospital, Southeast Ethiopia, May 2020 (n=1,282)**

| Hand Washing Practice | Category | Male (n=874) | Female (n=408) | p-value |
|---|----------|-----------------|-------------------|------------------|
| Wet hands with water | Yes | 866(99.1) | 405(99.3) | 0.745 |
| | No | 8(0.9) | 3(0.7) | |
| Apply enough soap to cover all hand surfaces | Yes | 658(75.3) | 294(72.1) | 0.218 |
| | No | 216(24.7) | 114(27.9) | |
| Rub hands palm to palm | Yes | 423(48.4) | 184(45.1) | 0.270 |
| | No | 451(51.6) | 224(54.9) | |
| Right palm over left dorsum with interlaced fingers and vice versa | Yes | 141(16.1) | 35(8.6) | p-value < 0.001* |
| | No | 733(83.9) | 373(91.4) | |
| Palm to palm with fingers interlaced | Yes | 142(16.2) | 55(13.5) | 0.201 |
| | No | 732(83.8) | 353(86.5) | |
| Backs of fingers to opposing palm with fingers interlocked | Yes | 58(6.6) | 13(3.2) | 0.012* |
| | No | 816(93.4) | 395(96.8) | |
| Rotational rubbing of left thumb clasped in the right palm and vice versa | Yes | 48(5.5) | 16(3.9) | 0.229 |
| | No | 826(94.5) | 392(96.1) | |
| Rotational rubbing, backward and forward with clasped fingers of the right hand in left palm and vice versa | Yes | 51(5.8) | 14(3.4) | 0.068 |
| | No | 823(94.2) | 394(96.6) | |
| Rinse hands with water | Yes | 760(87.0) | 342(83.8) | 0.133 |
| | No | 114(13.0) | 66(16.2) | |
| Use towel/ clean item to turn off the faucet | Yes | 131(15.0) | 54(13.2) | 0.405 |
| | No | 743(85.0) | 354(86.8) | |
| Overall Compliance Level | | | | |
| Full compliance with hand washing | Yes | 8 (0.9) | 3(0.7) | 0.745 |
| | No | 866(99.1) | 405 (99.3) | |
| Partial compliance to hand washing | Yes | 27 (3.1) | 10 (2.5) | 0.525 |
| | No | 847(96.9) | 398 (97.5) | |
| Minimal compliance with hand washing | Yes | 444(50.8) | 161 (39.5) | p-value < 0.001* |
| | No | 430 (49.2) | 247 (60.5) | |
| Non-compliance to hand washing | Yes | 162 (18.5) | 96 (23.5) | 0.038* |
| | No | 712 (81.5) | 312 (76.5) | |

166 *p-value < 0.05

167

168 Discussion

169 Good hand washing compliance with soap and water for at least 20 seconds is effective in preventing the spread
170 of COVID-19. In response to the current COVID-19 pandemic, the WHO recommended the establishment of
171 hand washing stations located around public areas where people can wash their hands frequently, and
172 somehow prevent themselves from contracting COVID-19 disease. However, public compliance towards the
173 recommended hand washing techniques in these stations is still unknown in many low-income countries,
174 including Ethiopia. Currently, it is now customary to see hand washing facilities in different public areas, yet
175 the question of "Do the people comply with the correct hand washing techniques?" is a fundamental
176 unanswered question. To the best of our knowledge, there is no study done in Sub-Saharan Africa and in
177 Ethiopia, particularly regarding the assessment on the level of hand washing compliance among hospital visitors
178 during this COVID-19 pandemic.

179 In the current study, only 0.9% of the visitors were observed for full compliance with the recommended hand
180 washing steps. The foremost, very low compliance among hospital visitors is of great concern, and thus
181 highlight the urgent need for interventions from the health authorities, healthcare professionals, and hospital
182 administrators. Also, the findings underscore the need for further behavioral change strategies in increasing the
183 hospital visitors' compliance, not merely with just the provision of hand washing stations. The level of compliance
184 reported in this study was almost comparable from the baseline assessments in Miami 0.52% [15], and São
185 Paulo, Brazil 1.7% [16]. Despite the similarities between the aforementioned studies, our finding is still extremely
186 low, hence, the present study is conducted during this time of COVID-19 pandemic. Conversely, a relatively
187 higher hand washing adherence by visitors was observed in the United Kingdom 25% [17] and 10.6% [18].

188 In this study, 46.5% of the study participants wash their hands for less than 20 seconds. According to the CDC,
189 UNICEF, and other experts, a 20-second hand washing is recommended. However, the WHO recommends 40-
190 60 seconds, and this encompasses the entire hand washing process from wetting the hands and applying soap,
191 until the hands are fully dried, whereas, the 20-second recommendation focuses only on the process of
192 scrubbing hands with soap [7, 8, 22, 24]. The challenges behind keeping this duration in public stations need
193 further attention. Some suggest that if people have trouble keeping track, humming the entire "Happy Birthday"
194 song twice before rinsing can help [23]. Failing to meet the proper hand washing techniques and accurate

195 duration can have serious consequences in controlling COVID-19 in counties like Ethiopia, where the healthcare
196 system is not yet matured enough to handle such a pandemic.

197 Previously conducted studies came up with promising results – audible reminders [19], stylized human watching
198 eye presentations [20], and active methods to encourage hand washing, led to marked improvements on
199 compliance [21]. On the other hand, improving hand washing thru knowledge alone is typically insufficient to
200 change hand washing behaviors [22]. In many cases, humans modify their behavior in a socially desirable way
201 when being observed by others. Hence, applying this basic idea to public hand washing stations may be helpful
202 to positively influence the behavior of individuals [20, 23].

203 In Ethiopia, hand washing awareness-raising campaigns by some public figures, national radio and television
204 public service announcements, and social media graphics were intensified to raise awareness about the benefits
205 of hand washing in relation to combating COVID-19. Unfortunately, regardless of these efforts mentioned, there
206 are still little improvements in the hand washing habits of the community. Answering the reasons and factors
207 behind the current low compliance is beyond the scope of this study.

208 There are few limitations in our study. First, we did not use the electronic hand washing observation system
209 which offers a greater advantage over human observations. Second, despite our assumption, the presence of
210 the data collectors may have influenced the hospital visitors' hand washing activities, and it is likely to have a
211 'Hawthorne effect'. Third, selectivity may be possible as the data collectors do not collect data from all people
212 entering and leaving the health facility.

213 **Conclusion**

214 In conclusion, compliance with proper hand washing among the visitors of Goba Referral Hospital in that specific
215 time period is alarmingly low. A significant number of hospital visitors did not wash their hands properly or
216 washed them in less effective ways. In this era of COVID-19 pandemic, mandating compliance towards proper
217 hand washing to all hospital visitors before entering the hospital and leaving it should be of paramount
218 importance.

219

220 **Acknowledgments**

221 The authors would like to thank Madda Walabu University Goba referral hospital public health department staff
222 for providing their unreserved support. We would like to acknowledge Goba Referral Hospital staff for their
223 support at a time of data collection.

224

225

226 References

- 227 1. Centers for Disease Control and Prevention (CDC). Hand Hygiene in Healthcare Settings. 2019. Retrieved
228 from <https://www.cdc.gov/handhygiene/index.html> (Accessed May 12, 2020).
- 229 2. World Health Organization (WHO). WHO interim recommendation on hand obligatory hand hygiene against
230 transmission of COVID-19. 2020. Retrieved from [https://www.who.int/docs/default-source/inaugural-who-
231 partners-forum/who-interim-recommendation-on-obligatory-hand-hygiene-against-transmission-of-covid-
232 19.pdf](https://www.who.int/docs/default-source/inaugural-who-partners-forum/who-interim-recommendation-on-obligatory-hand-hygiene-against-transmission-of-covid-19.pdf) (Accessed May 12, 2020).
- 233 3. UNICEF. Everything you need to know about washing your hands to protect against coronavirus (COVID-19)
234 Retrieved from [https://www.unicef.org/coronavirus/everything-you-need-know-about-washing-your-hands-
235 protect-against-coronavirus-covid-19](https://www.unicef.org/coronavirus/everything-you-need-know-about-washing-your-hands-protect-against-coronavirus-covid-19) (Accessed May 12, 2020)
- 236 4. COVID-19 and water, sanitation and hygiene message for policy makers. Retrieved from
237 [https://www.sanitationandwaterforall.org/sites/default/files/2020-04/SWA%20messages%20on%20COVID-
238 19.pdf](https://www.sanitationandwaterforall.org/sites/default/files/2020-04/SWA%20messages%20on%20COVID-19.pdf) (Accessed May 12, 2020)
- 239 5. Rabie T, Curtis V. Hand washing and risk of respiratory infections: a quantitative systematic review. *Tropical
240 medicine and international health*. 2006; 11(3):258-67.
- 241 6. WHO. Coronavirus disease (COVID-19) advice for the public. Retrieved from
242 <https://www.who.int/emergencies/diseases/novel-coronavirus-2019/advice-for-public> (Accessed May 12,
243 2020).
- 244 7. WHO. How to hand wash poster .2019. Retrieved from
245 https://www.who.int/gpsc/5may/How_To_HandWash_Poster.pdf?ua=1 (Accessed May 12, 2020).
- 246 8. Centers for Disease Control and Prevention (CDC). Hand washing: Clean Hands Save Lives. Retrieved
247 from https://www.cdc.gov/hand_washing/when-how-hand_washing.html (Accessed May 12, 2020).
- 248 9. Alzyood M, Jackson D, Aveyard H, Brooke J. COVID-19 reinforces the importance of handwashing. *J Clin
249 Nurs*. 2020. <https://doi.org/10.1111/jocn.15313>
- 250 10. Allegranzi B, Bagheri Nejad S, Combescure C, Graafmans W, Attar H, Donaldson L, et al. Burden of
251 endemic health-care-associated infection in developing countries: systematic review and metaanalysis.
252 *Lancet*. 2011;377(9761):228-41.
- 253 11. Loftus MJ, Guitart C, Tartari E, Stewardson AJ, Amer F, Bellissimo-Rodrigues F, et al. Hand hygiene in low-
254 and middle-income countries. *Int J Infect Dis*. 2019;86:25-30.
- 255 12. Pogrebna G, Kharlamov A. The Impact of Cross-Cultural Differences in Hand washing Patterns on the
256 COVID-19 Outbreak Magnitude (preprint).
- 257 13. Retrieved from: <https://www.afro.who.int/news/first-case-covid-19-confirmed-ethiopia> (Accessed May 23,
258 2020).
- 259 14. National COVID-19 management guideline handbook. FMOH. April 2020. Retrieved from
260 [http://www.moh.gov.et/ejcc/sites/default/files/2020-
261 04/COVID%2019%20Handbook%20for%20health%20professionals%20FMOH%202020.pdf](http://www.moh.gov.et/ejcc/sites/default/files/2020-04/COVID%2019%20Handbook%20for%20health%20professionals%20FMOH%202020.pdf)(Accessed May
262 12, 2020).
- 263 15. Birnbach DJ, Nevo I, Barnes S, Fitzpatrick M, Rosen LF, Everett-Thomas R, Sanko JS, Arheart KL. Do
264 hospital visitors wash their hands? Assessing the use of alcohol-based hand sanitizer in a hospital lobby.
265 *American journal of infection control*. 2012; 40(4):340-3.
- 266 16. Vaidotas M, Yokota PK, Marra AR, Camargo TZ, da Silva Victor E, Gysi DM, Leal F, dos Santos OF,
267 Edmond MB. Measuring hand hygiene compliance rates at hospital entrances. *American journal of infection
268 control*. 2015; 43(7):694-6.
- 269 17. Wolfe R, O'Neill E. Hand hygiene compliance by visitors to hospitals—can we do better?. *American journal
270 of infection control*. 2012; 40(9):899.
- 271 18. Fakhry M, Hanna GB, Anderson O, Holmes A, Nathwani D. Effectiveness of an audible reminder on hand
272 hygiene adherence. *American journal of infection control*. 2012; 40(4):320-3.
- 273 19. Fakhry M, Hanna G, Anderson O, Holmes A, Nathwani D. Effectiveness of an audible reminder on hand
274 hygiene adherence. *American Journal of Infection Control*. 2012. 40:320-3
- 275 20. Pfattheicher S, Strauch C, Diefenbacher S, Schnuerch R. A field study on watching eyes and hand hygiene
276 compliance in a public restroom. *Journal of Applied Social Psychology*. 2018;48(4):188-94.
- 277 21. Willison-Parry T, Haidar E, Martini L, Coates A. Hand washing adherence by visitors is poor: Is there a
278 simple solution? *American Journal of Infection Control*. 2013; 41:928-9.

- 279 22. Seimetz E, Kumar S, Mosler H-J. Effects of an awareness raising campaign on intention and behavioural
280 determinants for hand washing. Health Educ Res. 2016;31(2):109-120.
- 281 23. Global Hand washing Partnership. Retrieved from [https://globalhand washing.org/about-hand washing/faqs/](https://globalhandwashing.org/about-hand-washing/faqs/)
282 (Accessed May 12, 2020).
- 283 24. How Much Time You Spend Washing Your Hands Makes a Difference. Retrieved from
284 <https://www.healthline.com/health/how-long-should-you-wash-your-hands> (Accessed May 12, 2020).

285

286

287 **Supporting Information**

288 **Additional File 1:** The Association between Hand Washing Compliance during the Weekdays in Madda Walabu
289 University Goba Referral Hospital, Southeast Ethiopia, May 2020 (n=1,282)

290 **Additional File 2:** The association between hand washing compliance and observation sessions in Madda
291 Walabu University Goba Referral Hospital, Southeast Ethiopia, May 2020 (n=1,282)

292

Hand Washing Compliance

Full compliance to HW

0.9

Partial compliance to HW

2.9

Minimal compliance to HW

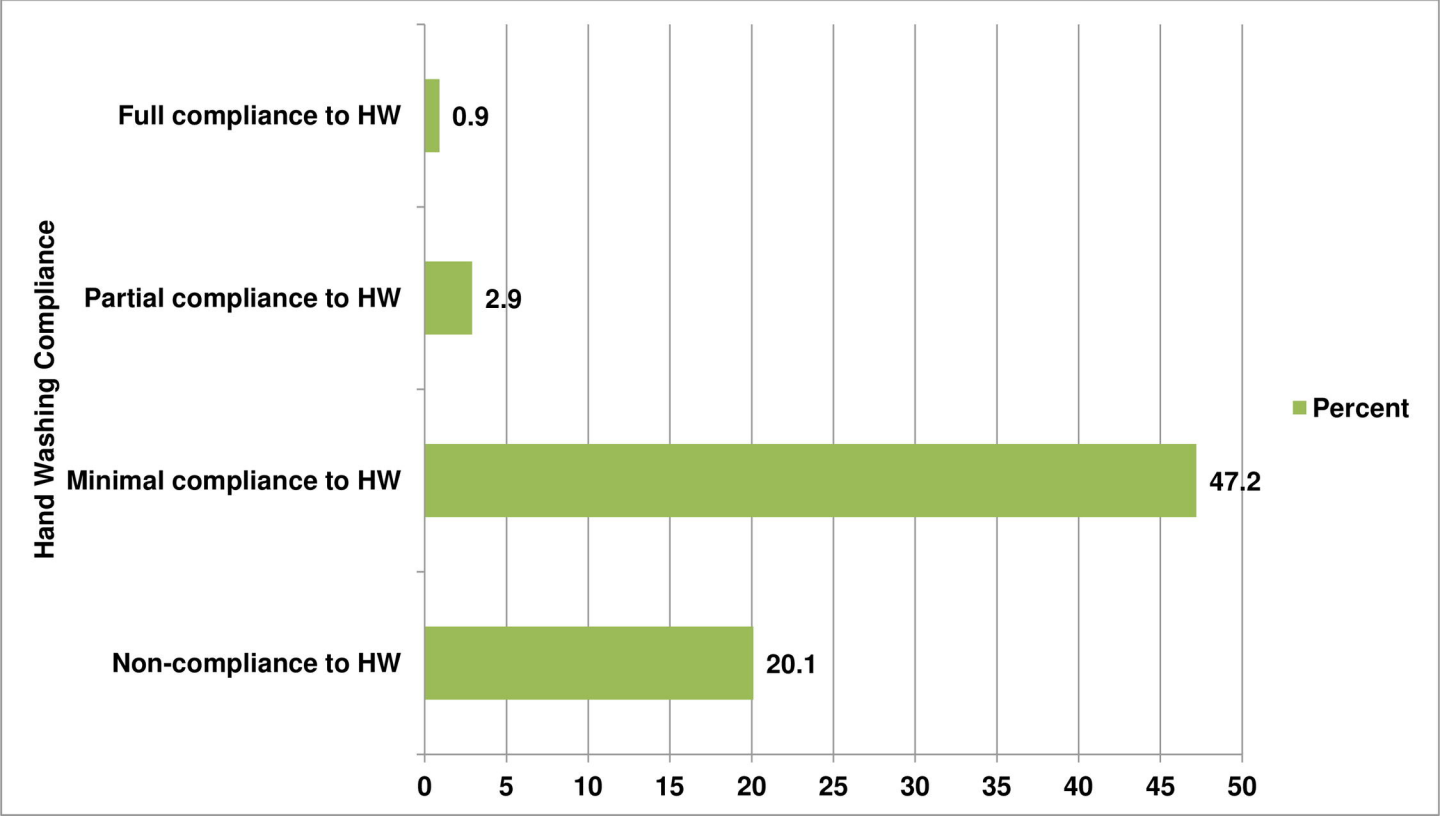
47.2

Non-compliance to HW

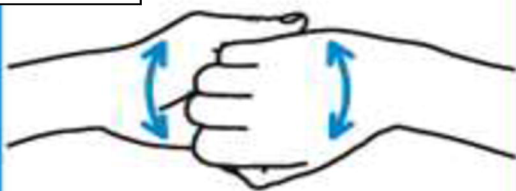
20.1

■ Percent

0 5 10 15 20 25 30 35 40 45 50



5.5%



backs of fingers to opposing palms with fingers interlocked

5.1%



rotational rubbing, backwards and forwards with clasped fingers of right hand in left palm and vice versa.

5.0%



rotational rubbing of left thumb clasped in right palm and vice versa