

## **Development and implementation of a customised rapid syndromic diagnostic test for severe pneumonia**

Vilas Navapurkar FFICM<sup>\*1</sup>, Josefin Bartholdson Scott PhD<sup>\*2</sup>, Mailis Maes MPhil<sup>2</sup>, Ellen Higginson PhD<sup>2</sup>, Sally Forrest BSc<sup>2</sup>, Joana Pereira-Dias MSc<sup>2</sup>, Surendra Parmar MSc<sup>3</sup>, Emma Heasman-Hunt BSc<sup>3</sup>, Petra Polgarova MSc<sup>1</sup>, Jo Brown MCLinRes<sup>1</sup>, Lissamma Titti BN<sup>1</sup>, William PW Smith BA<sup>4</sup>, Matthew Routledge MB BS<sup>5</sup>, David Sapsford MFRPSII<sup>6</sup>, M.Estée Török PhD<sup>7,8</sup>, David A Enoch FRCPath<sup>3</sup>, Vanessa Wong PhD<sup>3,5</sup>, Martin D Curran PhD<sup>3</sup>, Nicholas M Brown MD<sup>3</sup>, Jurgen Herre PhD<sup>9</sup>, Gordon Dougan FRS<sup>2</sup>, Andrew Conway Morris PhD<sup>1,10\*\*</sup>

1. John V Farman Intensive Care Unit, Addenbrooke's Hospital, Cambridge, United Kingdom
2. Cambridge Institute of Therapeutic Immunology & Infectious Disease, Department of Medicine, University of Cambridge, Cambridge, United Kingdom
3. Clinical Microbiology and Public Health Laboratory, Public Health England, Cambridge, United Kingdom
4. Clinical School, University of Cambridge, Cambridge, United Kingdom
5. Infectious Diseases, Addenbrooke's Hospital, Cambridge, United Kingdom
6. Pharmacy Department, Addenbrooke's Hospital, Cambridge, United Kingdom
7. Department of Medicine, University of Cambridge
8. Department of Microbiology, Cambridge University Hospitals NHS Foundation Trust, United Kingdom
9. Respiratory Medicine, Addenbrooke's Hospital, Cambridge, United Kingdom
10. Division of Anaesthesia, Department of Medicine, University of Cambridge, Cambridge, United Kingdom

\*The identified authors contributed equally to the manuscript.

\*\*Address for correspondence

Andrew Conway Morris  
Division of Anaesthesia  
Department of Medicine  
Level 4, Addenbrooke's Hospital  
Hills Road  
Cambridge  
CB2 0QQ  
Email: [mozza@doctors.org.uk](mailto:mozza@doctors.org.uk)  
Phone: +44 (0)1223 217889

Running title: Rapid syndromic diagnostic for severe pneumonia

Word count: 3555

## Abstract

### Rationale

The diagnosis of infectious diseases has been hampered by reliance on microbial culture. Cultures take several days to return a result and organisms frequently fail to grow. In critically ill patients this leads to the use of empiric, broad-spectrum antimicrobials and compromises effective stewardship. The objective of this study was to establish the performance and clinical utility of a syndromic diagnostic approach to severe pneumonia.

### Methods

Single ICU observational cohort study with contemporaneous comparator group. We developed and implemented a TaqMan array card (TAC) covering 52 respiratory pathogens in ventilated patients with suspected pneumonia. The time to result was compared against conventional culture, and sensitivity compared to conventional microbiology and metagenomic sequencing. We observed the clinician decisions in response to array results, comparing antibiotic free days (AFD) between the study cohort and comparator group.

### Results

95 patients were enrolled with 71 forming the comparator group. TAC returned results 61 hours (IQR 42-90) faster than culture. The test had an overall sensitivity of 99% (95% CI 98-99%) compared to conventional culture and metagenomic sequencing. In 53% of patients the TAC results altered clinical management, with 64% of changes leading to de-escalation, 27% to an increase in spectrum, and investigations for alternative diagnoses in 9%. There was a significant difference in the distribution of AFDs with more AFDs in the TAC group ( $p=0.02$ ).

### Conclusions

Implementation of a customised syndromic diagnostic approach to pneumonia led to faster results, with high sensitivity and measurable impact on clinical decision making.

Abstract word count:246

Keywords: Critical Care, Pneumonia, Molecular pathology, Antimicrobial stewardship

Trial registration NCT03996330 -registered 24/6/2019

#### Authorship (CReDIT)

VN -Conceptualisation, resources, investigation, writing-review and editing, project administration, funding acquisition, supervision.

JBS -resources, investigation, data curation, formal analysis, writing-original draft.

MM-resources, investigation, writing-review and editing.

EH-investigation, writing-review and editing.

SF-investigation, writing-review and editing.

JD-investigation, writing-review and editing.

SP-investigation, writing-review and editing.

EHH-investigation, writing-review and editing.

PP-investigation, data curation writing-review and editing.

JB-investigation, data curation writing-review and editing.

LT-investigation, data curation writing-review and editing.

WS- data curation writing-review and editing

MR-data curation writing-review and editing.  
DS-data curation writing-review and editing.  
MET-conceptualisation, investigation, data curation writing-review and editing  
DE-investigation, writing-review and editing.  
VW-formal analysis, investigation, data curation writing-review and editing.  
MDC-Conceptualisation, resources, investigation, writing-review and editing, project administration, funding acquisition, supervision.  
NB-Conceptualisation, resources, investigation, writing-review and editing, project administration, supervision.  
JH-Conceptualisation, resources, investigation, writing-review and editing.  
GD-Conceptualisation, resources, investigation, writing-review and editing, project administration, funding acquisition, supervision.  
ACM-Conceptualisation, methodology, resources, investigation, writing-original draft, project administration, formal analysis, funding acquisition, supervision.

The study was funded by Addenbrooke's Charitable Trust and the NIHR Cambridge Biomedical Resource Centre (grant held by Professor Dougan). Dr Török is supported by a Clinician Scientist Fellowship (funded by the Academy of Medical Sciences and the Health Foundation) and by the NIHR Biomedical Research Centre. Dr Conway Morris is supported by a Clinical Research Career Development Fellowship from the Wellcome Trust (WT 2055214/Z/16/Z). The metagenomic sequencing was funded by the Wellcome Trust.

Declaration of interest: MDC is the inventor on a patent held by the Secretary of State for Health (UK Government) EP2788503, which covers some of the genetic sequences used in this study. All other authors declare no conflict of interest.

Ethical permissions: The study was approved by the Leeds East Research Ethics Committee (17/YH/0286) and registered with [clinicaltrials.gov](http://clinicaltrials.gov) (NCT03996330). The retrospective assessment of routinely collected data from the comparator group received a consent waiver and was conducted under a protocol approved by the institutional review board (A095506). Informed consent was obtained from the patient or a proxy decision maker where the patient lacked capacity, follow-up consent was sought when patient recovered capacity.

## 1 **Introduction**

2

3 For many decades the diagnosis of infectious diseases has relied on a combination of clinical assessment and the  
4 culture of microorganisms. However, it is common for patients with clear clinical evidence of infection to have  
5 negative microbiological cultures.<sup>1,2</sup> Furthermore, the time taken to obtain a result by conventional culture can  
6 be several days.<sup>3</sup> Optimising antimicrobial therapy can be challenging, especially in patients who are at risk of  
7 multidrug resistant organisms.<sup>2</sup> In critically ill patients, this frequently results in the empiric use of several  
8 broad-spectrum agents, with predictable consequences for antimicrobial resistance and other forms of  
9 antimicrobial-related harm.<sup>4</sup> Conversely, failure to identify the causative organism can lead to failure to select  
10 the correct antimicrobial, which is associated with poor outcomes.<sup>5</sup>

11

12 Pneumonia amongst ventilated, critically ill patients can be especially difficult to diagnose.<sup>6</sup> Most critically ill  
13 patients are systemically inflamed,<sup>7</sup> clinical examination is unreliable<sup>8</sup> and there are multiple causes of  
14 radiographic lung infiltrates most of which are non-infectious.<sup>9</sup> In the case of ventilator-associated pneumonia  
15 (VAP) it is estimated that only 20-40% of patients suspected of having infection actually have it confirmed,<sup>10</sup>  
16 although this confirmation relies on the imperfect diagnostic standard of microbiological culture.

17

18 The development of host-based biomarkers for infection, such as C-reactive protein,<sup>11</sup> procalcitonin,<sup>12</sup> and  
19 alveolar cytokine concentrations<sup>13</sup> have been advanced as useful measures to help rationalise antimicrobial use.  
20 However, their utility in the diagnosis<sup>11,12</sup> and antimicrobial stewardship<sup>14,15</sup> of pneumonia has been challenged.

21

22 There is, therefore, a pressing need for rapid, sensitive, multi-pathogen focussed diagnostic tests for pneumonia  
23 which can aid effective and efficient antimicrobial optimisation. The use of TaqMan array cards (TAC),  
24 enabling single-plex real-time polymerase chain reaction (RT-PCR) to simultaneously target multiple respiratory  
25 pathogens, has previously shown promising results compared to conventional culture methods.<sup>16</sup> However,  
26 previous experience had demonstrated that multiplex PCR with restricted coverage of common respiratory  
27 pathogens had a limited impact on clinical decision making.<sup>17</sup> In this study we set out to evaluate the clinical  
28 utility of a customised TAC based syndromic diagnostic for severe pneumonia.

29

30

31

## 32 **Methods**

33

34 Detailed methods are included in the Supplementary appendix.

35

### 36 **Setting**

37 Patients were recruited from a single, 20 bedded teaching hospital Intensive Care Unit (ICU). The unit is a  
38 mixed general medical-surgical unit which supports solid organ and stem-cell transplantation and haematology-  
39 oncology services.

40

### 41 **Recruitment**

42 Prospectively identified patients were eligible for inclusion if they were receiving invasive mechanical  
43 ventilation, the treating clinician suspected pneumonia and was planning to perform diagnostic bronchoscopy.  
44 Consent was obtained from the patient or a proxy decision maker. Patients who were not included in the study  
45 due to lack of study team availability, and those from the month prior and month following the study, had their  
46 data reviewed retrospectively and acted as a comparator group.

47

### 48 **Test development**

49 Organism coverage for the TAC was selected from the known microbial flora encountered in the ICU,  
50 supplemented by the literature concerning causative organisms reported in severe pneumonia<sup>1,2,6,10,17,18</sup>. The  
51 species covered by the card are shown in figure 1. The card also included primers to target the endogenous  
52 control RNase P and the internal control MS2. All primers were validated prior to clinical use and tested against  
53 Public Health England's quality control for molecular diagnostics pilot external quality assessment (QCMD  
54 EQA) samples (supplemental section).

55

### 56 **Sampling procedure**

57 Bronchoscopy was undertaken in accordance with existing unit protocols and similar to that used in previous  
58 studies.<sup>10</sup> An ethylenediaminetetraacetic acid (EDTA) blood sample and blood culture (BACTEC, Beckton  
59 Dickinson, Warriner, UK) were taken at the time of bronchoscopy.

60

### 61 **Conventional microbiological testing**

62 Bronchoalveolar lavage (BAL) samples were processed according to the UK Standards for Microbiology  
63 Investigations (SMI).<sup>19</sup> Further details of conventional culture and in-house multi-plex PCR assays are contained  
64 in the supplemental section.

65

66 Following review by a consultant clinical scientist, results were returned to the ICU team. Clinical microbiology  
67 advice was available 24 hours/day, and patients underwent weekday daily combined ICU-Microbiology multi-  
68 disciplinary review in keeping with existing unit practice (weekend microbiology input was only on specific  
69 request). The study did not mandate any course of action by the treating clinical team, however the notes were  
70 retrospectively reviewed by a member of the study team, not involved in the clinical decision making process, to  
71 assess whether the information from the TAC had influenced patient management. Conventional microbiology

72 results were returned to clinicians via the electronic health record; however in practice these were returned  
73 sometime after the TAC results. Data were collected on the use of antibiotics amongst patients in the study and  
74 the comparator group, with the number of days alive and free of antibiotics in the seven days following lavage  
75 compared (antibiotic-free days, AFDs) for first episode only. Seven days was selected as being in keeping with  
76 a recent RCT of a novel diagnostic in ventilated pneumonia<sup>15</sup> and was judged to be a timeframe in which the  
77 specific impact of the TAC might be seen.

78

#### 79 **TAC validation**

80 The TAC was compared to the reference standard of conventional bacterial culture and PCR, in combination  
81 with metagenomic sequencing, as it is recognised that culture alone is an imperfect measure of the microbial  
82 composition of a sample. As lavage samples are low microbial biomass samples generally dominated by human  
83 DNA, a combination of shotgun and 16S amplicon sequencing approaches were used. Details of the  
84 conventional microbiology and metagenomic sequencing are in the supplemental methods.

85

#### 86 **Economic analysis**

87 A flow model for establishing diagnostic tests and decision points for antibiotic prescribing was created (figure  
88 E1). Costs for conventional microbiological tests were obtained from the Public Health England Clinical  
89 Microbiology and Public Health Laboratory, whilst costs for the TAC were determined by the cost of the array  
90 consumables and estimated staff time to run the assay.

91

#### 92 **Statistical analysis**

93 The protocol, agreed prior to study initiation, set out the primary and secondary endpoints. The co-primary  
94 endpoints were agreement between conventional microbiology, with sequencing added to form a composite  
95 reference during the study, and the TAC, assessed by sensitivity and median time to result for conventional  
96 culture and TAC assessed by Wilcoxon matched-pairs test. Where a reference standard was missing this was  
97 treated as 'negative', in accordance with pessimistic assumptions about index test performance (i.e. if reference  
98 standard was missing any TAC results were assumed to be 'false positive' for determination of specificity).  
99 Indeterminate results were excluded from analysis. Analysis was conducted using Graphpad prism v5.0  
100 (Graphpad inc, San Diego, CA).

101

#### 102 **Study size**

103 As the incidence of infections with specific organisms could only be inferred from conventional culture which is  
104 known to be insensitive, a formal power calculation was not performed. A pragmatic study size of 100 patients  
105 was selected to balance cost against including sufficient numbers to be able to make a judgement on card utility.

106

#### 107 **Ethical and regulatory approvals and funding**

108 The study was approved by the Leeds East Research Ethics Committee (17/YH/0286) and registered with  
109 clinicaltrials.gov (NCT03996330). The retrospective assessment of routinely collected data from the comparator  
110 group received a consent waiver and was conducted under a protocol approved by the institutional review board  
111 (A095506).

112

## 113 **Results**

### 114 **Recruitment**

115 Following technical validation of the TAC (supplemental section, table E1) 100 patients were recruited between  
116 February 2018 and August 2019. The study flow diagram is shown in figure 2. 64% of eligible patients were  
117 recruited, with lack of the study team availability the only reason for non-recruitment. Table 1 shows  
118 demographic and clinical features of the study population and comparator group. Although inclusion criteria  
119 were pragmatic and only required clinician suspicion of pneumonia, in practice all patients met ECDC criteria  
120 for clinical pneumonia<sup>20</sup>.

121

122 Five patients were recruited twice, having suffered a subsequent respiratory deterioration following the initial  
123 episode. These episodes occurred a median of 11 days apart (range 4-42 days). In one further patient samples  
124 were taken from two separate segments of the lung during the same bronchoscopic procedure. As these were  
125 taken at the same time only the primary sample corresponding to the site of maximal radiographic change has  
126 been included in the main results. The results of both samples are presented in table E2 for completeness.  
127 Although transitory reduction in oxygenation was common during bronchoscopy, no patient in the study  
128 suffered any protocol-defined serious adverse events.

129

### 130 **Time to result**

131 The co-primary outcome for this study was time to result for the microarray compared to validated conventional  
132 microbial culture. Median difference in time to result between TAC and conventional culture was 61 hours  
133 (range 19-256) (figure E2). The minimum TAC time to return was 4 hours, with median time to result 22 hours  
134 (range 4-42), most of the delays in results arose from not running the card outside routine working hours.

135

### 136 **Comparison of organisms detected by TAC compared to conventional microbiology and sequencing.**

137 179 organisms were identified from 100 patients on the TAC (table 2 and E3), excluding duplicate organisms  
138 (organisms detected at genus and species level or species and sub-type level). Conventional microbial culture  
139 and PCR detected 66 organisms (table 2 and E3) whilst sequencing revealed 109 organisms from 98 patients  
140 (two patients could not be sequenced), combined a total of 118 organisms were detected. Ten organisms  
141 detected by conventional microbiology or sequencing were missed by the TAC (overall sensitivity 92%, 95% CI  
142 85-96%). 71 organisms were detected by TAC only, considering all targets, 4952 tests were negative by TAC,  
143 giving a specificity of 99% (95% CI 98-99%). TAC cards which were negative for all pathogens in 21 cases,  
144 with 18 of these fully negative on both conventional microbiology and sequencing. Out of the 82 samples with  
145 pathogens detected, only 31 presented with a single organism. In the majority of cases (51 samples), we  
146 observed mixed infections (table E3 and figure E3).

147

148 In terms of the 10 ‘missed organisms’, one organism, that was positive by both culture and sequencing albeit in  
149 different patients, was *Citrobacter freundii*, for which we did not have a sequence on the card. A further five  
150 pathogens were detected by sequencing (*Staphylococcus aureus*, *Legionella* spp., and *Staphylococcus*  
151 *epidermidis*) or both culture and sequencing (two *E. faecium*), and although detected by TAC, these did not pass  
152 the internal quality control standards required for reporting and were considered ‘negative’ results. The

153 remaining three organisms, two Rhinovirus by conventional PCR and one *Staphylococcus* spp. by sequencing,  
154 were not detected by TAC at all. In one case the conventional culture was reported as ‘Mixed respiratory tract  
155 flora at  $>10^4$  CFU/ml’ with TAC detection of *E. faecium*, *C. albicans*, and *S. epidermidis* which was deemed an  
156 indeterminate result for conventional culture, however sequencing was successful on this sample.

157

158 One case of *Aspergillus fumigatus* was detected on the TAC, and although no fungal organisms were grown on  
159 culture the lavage galactomannan antibody test was highly positive (5.92 Units, reference range  $<0.5$ units), the  
160 patient had radiographic evidence of fungal pneumonia and multiple risk factors for invasive aspergillosis.

161

162 Notably, in the 10 samples from the 5 patients enrolled twice, the organisms detected demonstrated homogeneity  
163 between samples taken within the same ICU admission (table E2), as did samples taken from two separate areas  
164 of the lung on the same day.

165

### 166 **Quantitation**

167 In total, 25 organisms were grown on conventional culture at  $\geq 10^4$  CFU/ml, the conventional cut off for  
168 quantitative culture of lavage.<sup>20</sup> The median cycles to threshold (Ct) for these organisms that were also detected  
169 by TAC was 27 (IQR 24-29, range 20-33), by contrast culturable organisms detected on TAC but not on culture  
170 had a median Ct of 32 (IQR 30-34, range 22-38). A similar range of Ct values was noted in the QCMD EQA  
171 pilot study samples (table E1).

172

### 173 **Comparison of conventional blood culture and TAC**

174 Nuclear material extracted from the EDTA blood sample was run on the array card. This was compared with  
175 blood culture taken at the time of bronchoscopy. The yield from both conventional culture and TAC was  
176 limited, with 5 positive organisms on conventional testing and 20 organisms detected on the array card (table  
177 E4). *Streptococcus pneumoniae* was the only bacteria detected from blood on the array, being detected 5 times.  
178 14 of the organisms were detected in both lavage and blood, including all the cases of *Streptococcus*  
179 *pneumoniae* in blood.

180

### 181 **Impact on clinical decision making**

182 In 53 (53%) of patients the results from the TAC led to a change in clinical management (table 3). 64% of  
183 decisions were decreases in antimicrobial intensity. The most common de-escalation decisions were stopping  
184 macrolides in the absence of atypical organisms and de-escalating from anti-pseudomonal penicillins and  
185 carbapenems to narrower spectrum beta-lactam antibiotics (table E5). 27% of decisions involved broadening of  
186 the spectrum of coverage and in six cases the result prompted a search for an alternative diagnosis (three also  
187 involved de-escalation of antimicrobials). In some patients several changes occurred. In a further five cases the  
188 research team’s opinion was that management could have been changed (all five cases would have been de-  
189 escalation). Patients in the comparator group demonstrated significantly fewer antibiotic-free days (distribution  
190 of AFDs shown in figure 3).

191

192



## 193 **Economic analysis**

194 The costs of conventional microbiological testing were £222 (US\$ 286), whilst the costs of TAC and  
195 bacteriological culture for sensitivity testing was £171 (US\$ 220), a difference of £51 (US\$65). Figure E1 shows  
196 workflow with and without TAC.

197

198

## 199 **Discussion**

200

201 We demonstrate that a customised molecular diagnostic, designed to meet the needs of a specific clinical setting  
202 produced accurate results in a clinically important timeframe and influenced patient management decisions.  
203 This was within the context of a well-established antimicrobial stewardship programme. Results were returned  
204 to clinicians 61 hours faster than conventional cultures, and the accuracy of the results was confirmed by culture,  
205 sequencing or both. Notably, many previous studies in respiratory infection specifically exclude critically ill  
206 patients, who are those who may suffer the most from inappropriate antimicrobial therapy<sup>5</sup> but are also at  
207 greatest risk of antimicrobial-associated harm.<sup>4</sup> Importantly this can be achieved at no additional cost to the  
208 laboratory.

209

210 Molecular diagnostic platforms for respiratory infection syndromes have, until recently, largely focussed on  
211 viral pathogens. However, the need to optimise antimicrobial therapy whilst limiting the over-use of these  
212 precious drugs has led to repeated calls for effective bacterial-focussed diagnostics.<sup>21</sup> TACs have been  
213 previously reported for use in pneumonia.<sup>17,22,23</sup> However, apart from our previous report<sup>17</sup> that demonstrated  
214 limited clinical impact due to restricted organism coverage, none of the other reports have included ventilated  
215 patients and all were restricted to retrospective analysis of stored samples. Commercial multiple-pathogen arrays  
216 that include respiratory bacteria have recently become available. However, reports of their use in ventilated  
217 patients also remain restricted to retrospective analysis of stored samples.<sup>3,24,25</sup> These commercially available  
218 assays lack the breadth of coverage and the customisability of the TAC, with one evaluation noting that clinical  
219 use of the assay investigated to withhold antibiotics could have led to inappropriate undertreatment.<sup>3</sup>

220

221 Patients who develop critical illness as a result of pneumonia present a particular diagnostic challenge, as these  
222 infections may involve a variety of bacterial, fungal and viral pathogens.<sup>2</sup> Although the source of acquisition of  
223 severe pneumonia may indicate the risk of particular organisms,<sup>6,26,27</sup> this is an imperfect method of predicting  
224 the causative organism.<sup>28</sup> The difficulty in predicting the causative organism, coupled with the insensitivity of  
225 culture-based culture detection leads to frequent use of multiple, broad-spectrum antimicrobials. Even when  
226 culture results in growth of an organism, the time-frame on which these results are available compromises  
227 effective antimicrobial stewardship, and in practice de-escalation is rare<sup>29</sup> as there remains a constant concern  
228 about organisms which remain undetected.

229

230 Although there is now widespread acceptance of the presence of a respiratory microbiome,<sup>30,31</sup> the lungs of  
231 ventilated patients present a challenge to highly sensitive molecular diagnostics. The proximal respiratory tract  
232 of ventilated patients becomes rapidly colonised with predominantly Gram negative organisms<sup>32</sup> as the

233 microbiome is disrupted.<sup>31,33</sup> This can occur in the absence of infection, and there is a risk that highly sensitive  
234 techniques will be more susceptible to the detection of colonising organisms, driving an unintended increase in  
235 antimicrobial use. The use of semi-quantitative cultures of protected lower airway specimens, with growth  
236 above 10<sup>4</sup> colony forming units/ml for BAL have been used to distinguish infection from colonisation.<sup>20,34</sup> We  
237 adapted this approach in this study, using the quasi-quantitative Ct value provided by RT-PCR and testing  
238 protected broncho-alveolar samples. This ensured that the dominant change in practice seen was the de-  
239 escalation of antimicrobials. However, we also found a substantial proportion of changes involved broadening  
240 the coverage to cover organisms that had not been anticipated. Had our study been judged by conventional  
241 ‘reduction in antimicrobial use’ the modest reduction in antibiotic-free days seen may have been considered  
242 irrelevant. We suggest that consensus measures of antimicrobial optimization be developed to assess the clinical  
243 utility of novel microbial diagnostics.

244

245 One of the problems that has beset microbial diagnostics studies has been the absence of a ‘gold standard’  
246 against which the candidate can be assessed,<sup>35</sup> as it is acknowledged that conventional culture is imperfect. For  
247 this study we used a combination of conventional culture and metagenomic sequencing. All but 10 organisms  
248 identified by conventional microbiology or sequencing were detected by the TAC. The card was, overall, more  
249 sensitive than either of the confirmatory techniques. We do not believe these additional TAC hits to be true  
250 ‘false positives’ but rather reflect the enhanced sensitivity of targeted PCR. Notably, all of these TAC-only  
251 detections occurred at high Ct values, indicating limited and almost certainly clinically irrelevant numbers of  
252 organisms. We therefore believe that the sequencing and culture results can give clinicians considerable  
253 confidence in the results provided.

254

255 The selection of organisms targeted on the card was crucial, and informed by our previous experience where  
256 omission of key organisms of concern significantly limited the impact of a similar card.<sup>17</sup> Given the case mix of  
257 our unit, with a high proportion of immunosuppressed patients, we opted to include a number of low  
258 pathogenicity organisms, such a coagulase-negative *staphylococci*, *enterococci* and *Candida albicans* on the  
259 card. The detection of these organisms can be challenging to interpret, and indeed given the knowledge that  
260 many critically ill patients may be immunoparitic even if not classically immunosuppressed<sup>6</sup> their significance  
261 remains uncertain. Their presence, and the frequency of polymicrobial detection, indicates a dysbiotic response  
262 in the lungs of critically ill patients,<sup>31,33,34,36</sup> and knowing how to respond to this dysbiosis remains an area of  
263 uncertainty. One of the advantages of the TAC as a platform is its customizability, and single targets can be  
264 easily added or modified without having to re-optimize the entire panel, that allowed us to deploy the card  
265 during the recent COVID19 pandemic<sup>37</sup>, and will also allow it to be adapted to other units or geographic  
266 locations. Narrowing of spectrum was based on expert microbiological advice in light of the known prevalence  
267 of antimicrobial resistance in species identified in our area, the addition of further AMR genes to the TAC may  
268 help further narrow spectra.

269

270 This study had a number of strengths. We developed a test that met the needs of a particular intensive care unit,  
271 and implemented it in the context of a well-established stewardship programme. We managed to include a  
272 significant proportion of the patients undergoing bronchoscopic investigation for pneumonia, and thus our

273 results are likely to be representative of our unit's workload. . However, validation in external cohorts is  
274 required to demonstrate generalisability. A potential weakness is that as an observational study, the assessment  
275 of impact on clinical decision making is susceptible to bias, and we cannot be certain that the changes to clinical  
276 management made would not have occurred without the TAC result. However, the more objective increase in  
277 AFDs relative to the comparator group is supportive of genuine impact. Our comparator group was similar to  
278 the study group in terms of demographic and illness severity indices, and by being drawn from the same time  
279 period of the study being managed by the same clinicians, in an environment in which a study which may  
280 influence antimicrobial stewardship was occurring, therefore we believe the differences seen are indeed due to  
281 the diagnostic approach used. However, we cannot exclude the possibility that a comparator group made up of  
282 patients admitted at times when the study team were not available may differ in unmeasured ways from the  
283 study cohort. The similar 28-day mortality suggests that our TAC-based approach, with overall reduction in  
284 antibiotic intensity, was not harmful. Although one patient was positive by TAC for *Aspergillus*, with raised  
285 galactomannan and supportive radiology, two further patients met similar criteria for probable invasive  
286 aspergillosis but were negative for *Aspergillus* by TAC. Whilst these counted as 'true negatives' as we had set  
287 out in our original protocol, we suggest caution in the use of this card for ruling out *Aspergillus* infection.  
288 As there are no agreed standards for sequencing to determine the presence of pathogens in clinical samples, we  
289 relied on pragmatic criteria agreed within the research team. However, given the acknowledged insensitivity of  
290 conventional culture<sup>35</sup>, we believe this adds significant additional confirmation of the performance of the TAC.

291  
292 In conclusion, we have developed a customised respiratory diagnostic which covers a broad range of pathogenic  
293 organisms, and validated it against the standard of conventional microbiology as well as metagenomic  
294 sequencing. In a pragmatic, observational study of the implementation of this tool, within the context of an  
295 established antimicrobial stewardship program, we were able to see significant impact on clinical decision  
296 making. Although external validation is required, we believe this represents a promising new approach to the  
297 management of severe pneumonia with the potential to impact on patient management and outcomes.

298  
299  
300  
301  
302  
303  
304  
305

## 306 Acknowledgements

307  
308 The authors thank the consultant intensivists of the John V Farman Intensive Care Unit, Drs P Bradley, P  
309 Featherstone, S Ford, M Georgieva, A Johnston, R Mahroof, J Martin, J Preller, K Patel, C Summers M Trivedi,  
310 J Varley, Pharmacist L Radford and the nursing and physiotherapy teams who managed the patients, and the  
311 patients and their families who consented to the study. We also thank Torsten Seemann for access to his Kraken  
312 database.

313  
314  
315  
316  
317

## 318 References:

319

- 320 1. Cilloniz C, Ewig S, Polverino E, et al. Microbial aetiology of community-acquired pneumonia  
321 and its relation to severity. *Thorax*. 2011;66(4):340-346.
- 322 2. Vincent J-L, Sakr Y, Singer M, et al. Prevalence and Outcomes of Infection Among Patients  
323 in Intensive Care Units in 2017. *JAMA*. 2020;323(15):1478–10.
- 324 3. Gadsby NJ, McHugh MP, Forbes C, et al. Comparison of Unyvero P55 Pneumonia Cartridge,  
325 in-house PCR and culture for the identification of respiratory pathogens and antibiotic resistance in  
326 bronchoalveolar lavage fluids in the critical care setting. *Eur J Clin Microbiol Infect Dis*.  
327 2019;38(6):1171–1178.
- 328 4. Arulkumaran N, Routledge M, Schlebusch S, Lipman J, Morris AC. Antimicrobial-associated  
329 harm in critical care: a narrative review. *Intensive Care Med*. January 2020:1-11.
- 330 5. Iregui M, Ward S, Sherman G, Fraser VJ, Kollef MH. Clinical Importance of Delays in the  
331 Initiation of Appropriate Antibiotic Treatment for Ventilator-Associated Pneumonia. 2002;122(1):262-  
332 268.
- 333 6. Morris AC. Management of pneumonia in intensive care. *J Emerg Crit Care Med*.  
334 2018;2(0):101-101.
- 335 7. Rangel-Frausto MS, Pittet D, Costigan M, Hwang T, Davis CS, Wenzel RP. The Natural  
336 History of the Systemic Inflammatory Response Syndrome (SIRS). *JAMA*. 1995;273(2):117–5.
- 337 8. Lichtenstein D, Goldstein I, Mourgeon E, Cluzel P, Grenier P, Rouby J-J. Comparative  
338 diagnostic performances of auscultation, chest radiography, and lung ultrasonography in acute  
339 respiratory distress syndrome. *Anesthesiology*. 2004;100(1):9-15.
- 340 9. Meduri GU, Mauldin GL, Wunderink RG, et al. Causes of fever and pulmonary densities in  
341 patients with clinical manifestations of ventilator-associated pneumonia. *Chest*. 1994;106(1):221-235.
- 342 10. Conway Morris A, Kefala K, Wilkinson TS, et al. Diagnostic importance of pulmonary  
343 interleukin-1{beta} and interleukin-8 in ventilator-associated pneumonia. *Thorax*. 2010;65(3):201-207.
- 344 11. Povoia P, Coelho L, Almeida E, et al. C-reactive protein as a marker of ventilator-associated  
345 pneumonia resolution: a pilot study. *Eur Resp J*. 2005;25(5):804-812.
- 346 12. Pfister R, Kochanek M, Leygeber T, et al. Procalcitonin for diagnosis of bacterial pneumonia  
347 in critically ill patients during 2009 H1N1 influenza pandemic: a prospective cohort study, systematic  
348 review and individual patient data meta-analysis. *Critical Care*. 2014;18(2):1-11.
- 349 13. Hellyer TP, Morris AC, McAuley DF, et al. Diagnostic accuracy of pulmonary host  
350 inflammatory mediators in the exclusion of ventilator-acquired pneumonia. *Thorax*. 2015;70(1):41-47.
- 351 14. Huang DT, Yealy DM, Filbin MR, et al. Procalcitonin-Guided Use of Antibiotics for Lower  
352 Respiratory Tract Infection. *N Engl J Med*. 2018;379(3):236-249.
- 353 15. Hellyer TP, McAuley DF, Walsh TS, et al. Biomarker-guided antibiotic stewardship in  
354 suspected ventilator-associated pneumonia (VAPrapid2): a randomised controlled trial and process  
355 evaluation. *Lancet Resp Med*. December 2019:1-10.
- 356 16. Steensels D, Reynders M, Descheemaeker P, et al. Clinical evaluation of a multi-parameter  
357 customized respiratory TaqMan® array card compared to conventional methods in  
358 immunocompromised patients. *J Clin Virol*. 2015;72:36-41.
- 359 17. Jones N, Conway Morris A, Curran MD et al. Evaluating the use of a 22-pathogen TaqMan  
360 array card for rapid diagnosis of respiratory pathogens in Intensive Care. *J Med Microbiol*. 2020; 69:  
361 971-978.

- 362 18. Gadsby NJ, Russell CD, McHugh MP, et al. Comprehensive Molecular Testing for  
363 Respiratory Pathogens in Community-Acquired Pneumonia. *Clin Infect Dis*. 2016;62(7):817-823.
- 364 19. Public Health England. Investigation of bronchoalveolar lavage, sputum and associated  
365 specimens UK SMI B 57 issue 3.5 (May 2019) (available from  
366 [https://www.gov.uk/government/publications/smi-b-57-investigation-of-bronchoalveolar-lavage-](https://www.gov.uk/government/publications/smi-b-57-investigation-of-bronchoalveolar-lavage-sputum-and-associated-specimens)  
367 [sputum-and-associated-specimens](https://www.gov.uk/government/publications/smi-b-57-investigation-of-bronchoalveolar-lavage-sputum-and-associated-specimens)) accessed 20/5/2020
- 368 20. Plachouras D, Lepape A, Suetens C. ECDC definitions and methods for the surveillance of  
369 healthcare-associated infections in intensive care units. *Intensive Care Med*. October 2018:1-3.
- 370 21. The Lancet Respiratory Medicine. Pneumonia research: time to fill in the gaps. *Lancet Resp*  
371 *Med*. 2019;7(12):993.
- 372 22 Wolff BJ, Bramley AM, Thurman KA, et al. Improved Detection of Respiratory Pathogens by  
373 Use of High-Quality Sputum with TaqMan Array Card Technology. Onderdonk AB, ed. *J Clin*  
374 *Microbiol*. 2017;55(1):110-121.
- 375 23 Hercik C, Cosmas L, Mogeni OD, et al. A diagnostic and epidemiologic investigation of acute  
376 febrile illness (AFI) in Kilombero, Tanzania. Schildgen O, ed. *PLoS ONE*. 2017;12(12):e0189712-  
377 e0189720.
- 378 24 Pulido MR, Moreno-Martínez P, González-Galán V, et al. Application of BioFire FilmArray  
379 Blood Culture Identification panel for rapid identification of the causative agents of ventilator-associated  
380 pneumonia. *Clini Micro Infect*. 2018;24(11):1213.e1-1213.e4.
- 381 25 Yoo IY, Huh K, Shim HJ, et al. Evaluation of the BioFire FilmArray Pneumonia Panel for  
382 rapid detection of respiratory bacterial pathogens and antibiotic resistance genes in sputum and  
383 endotracheal aspirate specimens. *Int J Infect Dis*. 2020;95:326-331.
- 384 26. American Thoracic Society, Infectious Diseases Society of America. Guidelines for the  
385 management of adults with hospital-acquired, ventilator-associated, and healthcare-associated  
386 pneumonia. *Am J Respir Crit Care Med*. 2005;171(4):388-416.
- 387 27. Chastre J, Fagon J-Y. Ventilator-associated pneumonia. *Am J Respir Crit Care Med*.  
388 2002;165(7):867-903.
- 389 28. Yap V, Datta D, Metersky ML. Is the Present Definition of Health Care–Associated  
390 Pneumonia the Best Way to Define Risk of Infection with Antibiotic-Resistant Pathogens? *Infect Dis*  
391 *Clin North Am*. 2013;27(1):1-18.
- 392 29. Kollef MH, Morrow LE, Niederman MS, et al. Clinical Characteristics and Treatment Patterns  
393 Among Patients With Ventilator-Associated Pneumonia. *Chest*. 2006;129(5):1210-1218.
- 394 30. Langelier C, Kalantar KL, Moazed F, et al. Integrating host response and unbiased microbe  
395 detection for lower respiratory tract infection diagnosis in critically ill adults. *Proc Natl Acad Sci USA*.  
396 2018;319:201809700.
- 397 31. Zakharkina T, Martin-Loeches I, Matamoros S, et al. The dynamics of the pulmonary  
398 microbiome during mechanical ventilation in the intensive care unit and the association with occurrence  
399 of pneumonia. *Thorax*. 2017;72(9):803-810.
- 400 32. Ewig S, Torres A, El-Ebiary M, et al. Bacterial colonization patterns in mechanically  
401 ventilated patients with traumatic and medical head injury. Incidence, risk factors, and association with  
402 ventilator-associated pneumonia. *Am J Respir Crit Care Med*. 1999;159(1):188-198.
- 403 33. Roquilly A, Torres A, Villadangos JA, et al. Pathophysiological role of respiratory dysbiosis  
404 in hospital-acquired pneumonia. *Lancet Resp Med*. 2019;7(8):710-720.

- 405 34. Morris AC, Kefala K, Simpson AJ, et al. Evaluation of the effect of diagnostic methodology  
406 on the reported incidence of ventilator-associated pneumonia. *Thorax*. 2009;64(6):516-522.  
407 doi:10.1136/thx.2008.110239.
- 408 35. Bhat N, O'Brien KL, Karron RA, Driscoll AJ, Murdoch DR, the Pneumonia Methods Working  
409 Group. Use and Evaluation of Molecular Diagnostics for Pneumonia Etiology Studies. *Clin Infect Dis*.  
410 2012;54(suppl 2):S153-S158.
- 411 36. Nolan TJ, Gadsby NJ, Hellyer TP, et al. Low-pathogenicity *Mycoplasma* spp. alter human  
412 monocyte and macrophage function and are highly prevalent among patients with ventilator-acquired  
413 pneumonia. *Thorax*. 2016;71(7):594-600.
- 414

415

Parameter	Study patients (95 patients)	Comparator group (71 patients)
Median age (range)	60 (21-86)	62 (18-83)
n (%) female	41 (43 %)	27 (38 %)
Median (IQR) functional comorbidity index	1 (2)	-
n (%) with community-acquired pneumonia	34 (36%)	20 (28%)
n (%) hospital-acquired pneumonia	61 (64%)	51 (72%)
of HAP n (%) ventilator-associated	24 (39%)	27 (52%)
Median (IQR) APACHE II score on admission	16 (10)	16 (9)
% receiving antibiotics at time of lavage	82%	96%
Median (IQR) FiO2 prior to bronchoscopy	0.5 (0.25)	0.5 (0.30)
Median (IQR) white cell count	10.5 (12.4)	10.7 (9.5)
Median (IQR) neutrophil count	8.6 (11.5)	8.8 (8.63)
Median (IQR) C-reactive protein concentration	198 (153)	146 (154)
28 day Mortality	30 (32%)	21 (30%)

416

417

418 **Table 1: clinical and demographic details of patients enrolled in the study.** APACHE II, acute physiology  
419 and chronic health evaluation II, FiO2, fraction of inspired oxygen.

420

421

422

Organism detected	Frequency (by conventional microbiology)	Frequency (by TAC)	Frequency (by sequencing)
<b>Bacteria</b>			
<i>Citrobacter freundii</i>	1***	0	1***
<i>Enterobacter cloacae</i>	2	8	3
<i>Enterococcus faecalis</i>	0	3	0
<i>Enterococcus faecium</i>	3	7	7
<i>Escherichia coli</i>	6	14	6
<i>Klebsiella pneumoniae</i>	3	5	3
<i>Enterobacteriaceae</i> (not further specified)	0	1	2
<i>Haemophilus influenzae</i>	0	3	2
<i>Legionella pneumophila</i>	1*	1	1
<i>Legionella</i> spp. (non-pneumophila)	0	2	2
<i>Moraxella catharralis</i>	0	1	0
<i>Mycoplasma pneumoniae</i>	0	1	1
<i>Proteus</i> spp.	0	2	0
<i>Pseudomonas aeruginosa</i>	2	5	4
<i>Serratia marcescens</i>	1	3	0
<i>Staphylococcus aureus</i>	2	8	8
<i>Staphylococcus epidermidis</i>	0	9	2
Other coagulase negative <i>Staphylococcus</i>	0	1	2
Other <i>Staphylococcus</i> spp. (not further specified)	0	0	1
<i>Stenotrophomonas maltophilia</i>	2	4	2
<i>Streptococcus pneumoniae</i>	1	9	6
<i>Streptococcus pyogenes</i>	0	1	0
<i>Streptococcus</i> spp. (not further specified)	0	23	10
Mixed upper respiratory tract flora	1	N/A	N/A
<b>Fungi</b>			
<i>Aspergillus</i> spp.	0**	1	0
<i>Candida albicans</i>	1	12	10
<i>Candida</i> spp.	0	1	1
<i>Pneumocystis jirovecii</i>	4	4	3
<b>Viruses</b>			
Coronavirus <sup>#</sup>	0	3	1
Cytomegalovirus	5	7	4
Epstein-Barr Virus	1	6	1
Herpes simplex virus	7	11	7
Human metapneumovirus	1	1	1
Influenza A	7	7	5
Influenza B	3	3	2
Parainfluenza virus	4	4	4
Rhinovirus	8	8	7

423

424

425

426

427

428

429

430

431

432

433

434

435

**Table 2: Organisms detected by conventional microbiological testing (left hand column), by TAC (middle column), and by microbial sequencing (right hand column).** \* Legionella urinary antigen test positive. \*\* Positive BAL galactomannan enzyme immunoassay (>0.5 units) with CT consistent with fungal pneumonia and known risk factors but fungal cultures were not positive. \*\*\*One hit not found in same patient. # -refers to human coronavirus OC43 and NL63, no tests were undertaken for SARS-CoV2 and final testing occurred in August 2019.



436

Type of change		
Reduction in spectrum	Stopping therapeutic antimicrobial agent(s)*	33
	Changing to a narrower spectrum	7
	Withholding planned treatment	2
Increase in spectrum	Addition of further antimicrobials	14
	Change to broader spectrum agent	4
Alternative diagnosis investigated or made	Computed Tomography scan	2
	Tissue biopsy	2
	Alternative diagnosis made	2

437

438

**Table 3: changes in treatment made as a result of findings from the TAC (some patients had more than one change within a given type – e.g. both reduction spectrum and cessation of antimicrobials) .**

439

440

441

\*in two cases antimicrobials were reduced to prophylactic dose as patients remained at risk of opportunistic infections

442

443

444

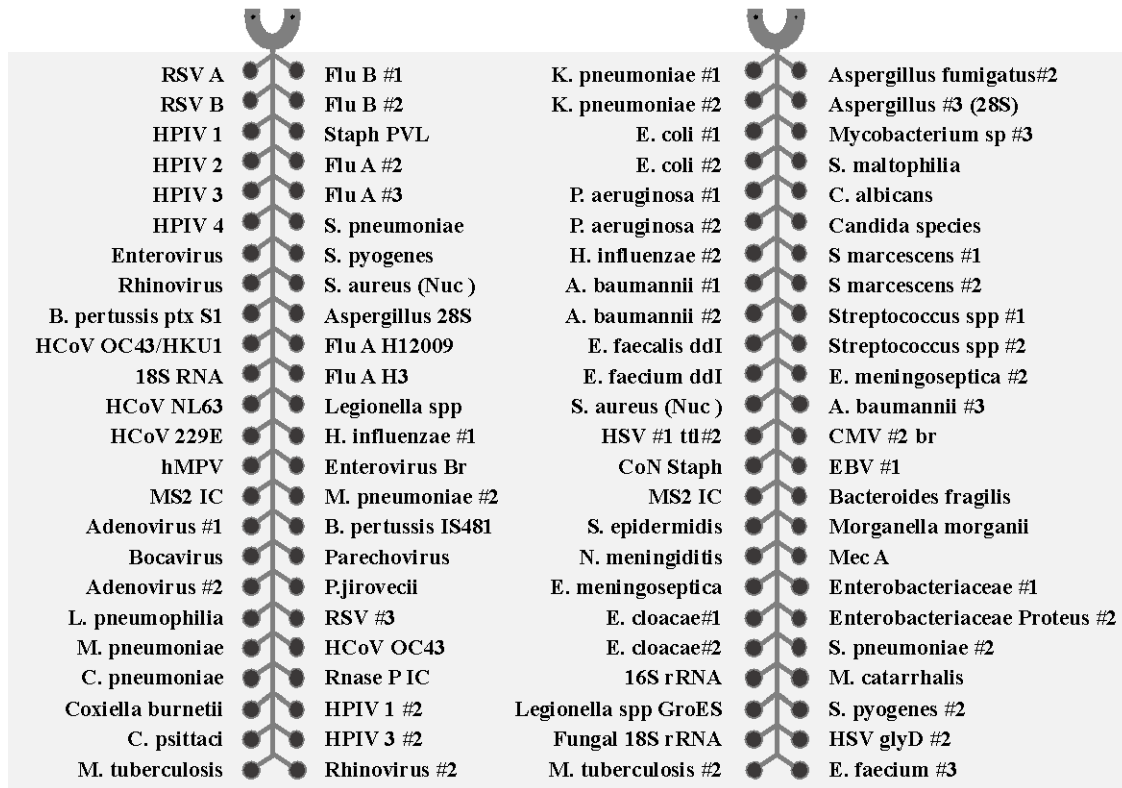


Figure 1: layout of TAC

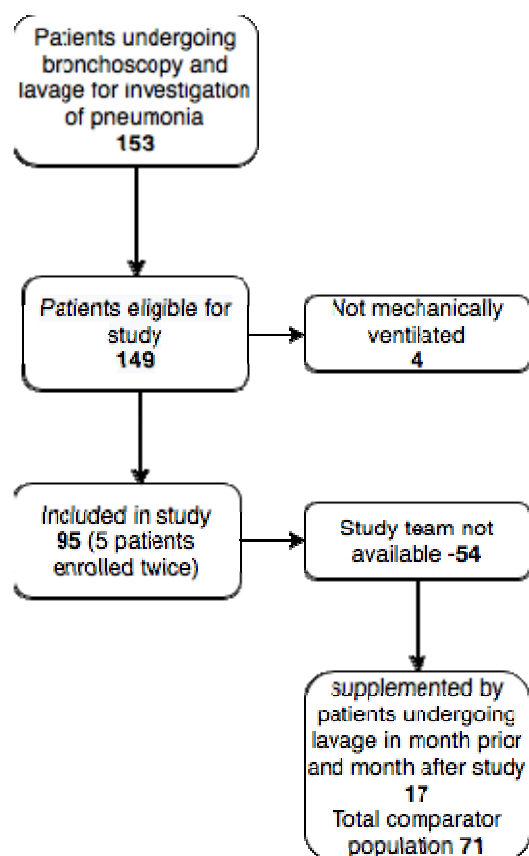
445

446

447

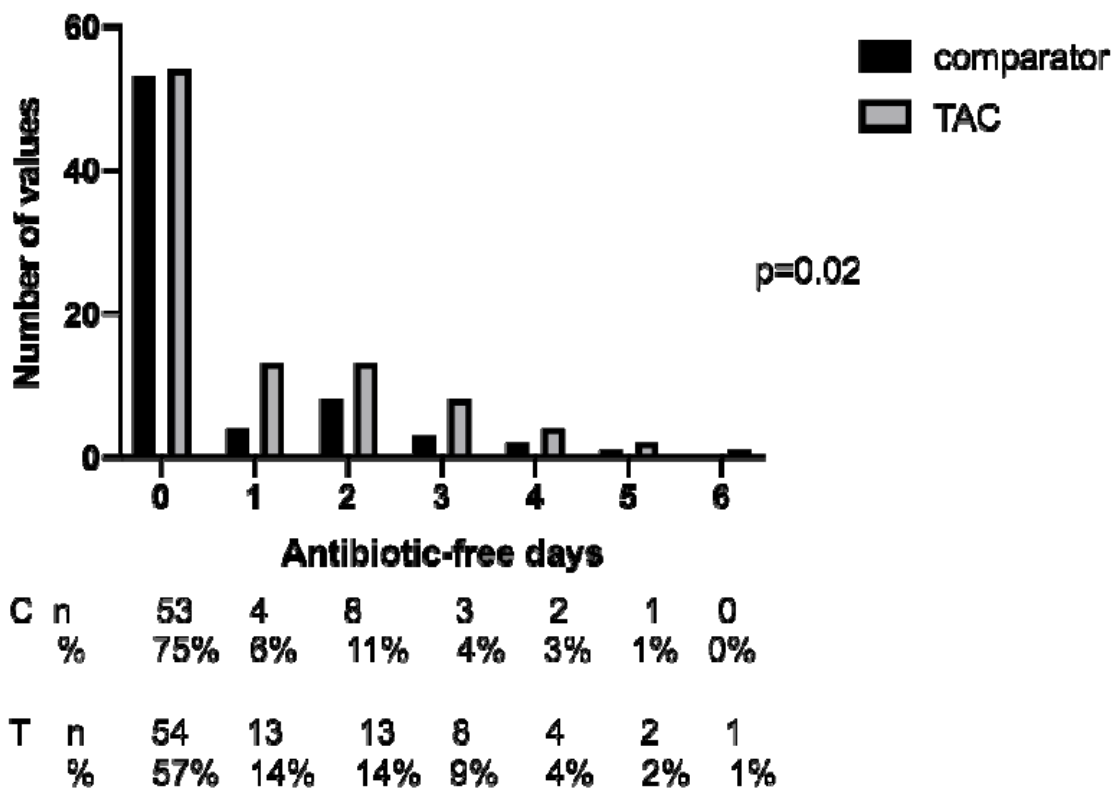
448

449



450  
451  
452  
453  
454  
455

**Figure 2: recruitment flow chart**



456  
457  
458  
459  
460

**Figure 3: Distribution of days alive and free of antibiotics in the seven days following bronchoscopy and lavage in the TAC and comparator cohorts.** Following first lavage only for patients who had more than one BAL during ICU admission. Numbers in each category and percentage shown below graph, p value by Mann-Whitney U test.

