

“The expediency of local modelling to aid national responses to SARS-CoV-2.”

Bernard M. Groen¹ (DBA) , Paul Turner² (PhD) , Peter Lacey³ (MSc)

[THIS IS A PRE-PRINT – AS SUCH IT IS STILL SUBJECT TO PEER REVIEW](#)

KEY WORDS: SARS-CoV-2; COVID19; PANDEMIC MODELLING; HEALTH SYSTEMS MODELLING; PUBLIC HEALTH POLICY; HEALTH ECONOMICS; HEALTH BEHAVIOUR.

WORD COUNT: 2,249 (NET) 2,761 (GROSS) (MAY 2020)

Abstract

Background: With the SARS-CoV-2 pandemic gripping most of the globe, healthcare and economic recovery strategies are being explored currently as a matter of urgency. The underpinning rationale of this paper is that we believe that health and care services are provided locally, therefore, local implications of national policy need to be reflected when informing national responses to the SARS-CoV-2 pandemic.

Methods: We adopted the assumptions underlying the United Kingdom government’s national epidemiological model which influences the national policy response to the SARS-CoV-2 pandemic. Then used these in a local context and show how projections in terms of presentations of symptomatic patients differ in a variety of settings depending on local demographics. **Setting:** *North of England, United Kingdom, population modelled at four local constituent levels which aggregated gives a total population of 3.2m.*

Results: We clearly demonstrate that there is significant difference in the way the national modelling outputs are replicated at local levels. Specifically, in terms of projected increased levels of demand for services on the local health and care systems.

Conclusions: This analysis provides significant evidence of differing timelines specifically in terms of subsequent projected peak demands. In addition, it clearly indicates varying levels of such demand throughout the four modelled localities. These idiosyncrasies are ‘masked’ by both regional and national approaches to modelling. We urge readers to ensure that any national policy is appropriately adopted through the use of a complementary bottom up approach, to suit local health and care systems. Finally, we share our methodology to ensure other professionals could replicate this study elsewhere.

¹ Corresponding author contact details: Dr Bernard M. Groen, Durham University Business School, Mill Hill Lane, Durham, United Kingdom, DH1 3LB; b.m.groen@durham.ac.uk

² University of Lincoln, United Kingdom, and Whole Systems Partnership, United Kingdom

³ [Whole Systems Partnership](#), United Kingdom

1 **Background**

2 National governments are forced to take urgent action using national policies to restrict social
3 interactions and temporary business closures which impact significantly on numerous factors of our
4 lives. In order to fully understand how limited health and care resources could be utilised and
5 maximised in response to this pandemic, we need to create a thorough understanding of the impact
6 of national policy on local health and care systems. Our guiding principle and understanding here is
7 that health and care services are provided locally (effectively at Integrated Care Partnership – ICP
8 level) not regionally or nationally, indeed, not in aggregate but to individuals. Therefore, we conducted
9 a study using well-established model parameters which are used to inform national policy and adapted
10 these to consider local nuances to see whether any projected model outputs would behave differently
11 to national projections. We show how projections in terms of presentations of symptomatic patients
12 in a hospital setting significantly vary between local communities. Indeed, when aggregated up to
13 regional or national levels, such local idiosyncrasies fade which may have profound consequences in
14 efforts to coordinating local health and care services in response to SARS-CoV-19.

15 **Methods**

16

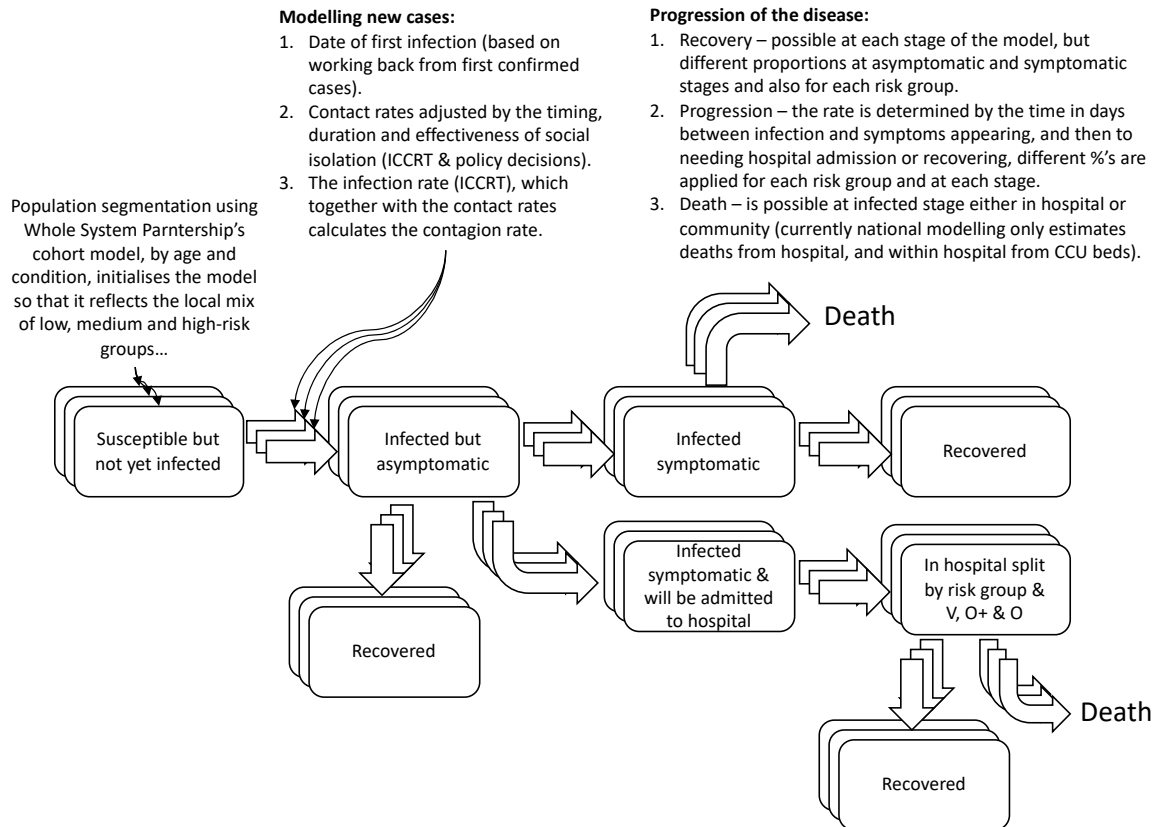
17 **Model design**

18 A System Dynamic Model (SDM) approach is selected and a Susceptible, Exposed, Infectious,
19 Recovered, (SEIR) stock and flow model designed by the SDM software manufacturer⁴ is adapted for
20 the base model. The model is run over a one-year period starting from 1st January 2020 and calculates
21 one transaction per day using the Euler integration method. SDM offers communities a tool with which
22 to understand their systems and become ready to influence and engage with real-world actions
23 (Minyard et al., 2018) whilst avoiding discrete operational level interference. The purpose of the SDM
24 allows Integrated Care System (ICS) communities to simulate scenarios for non-pharmaceutical
25 interventions to SARS-CoV-2 and examine care provision away from a national perspective. Porter
26 and Oleson discuss limitations in SEIR arising from exponential distribution of latent and infectious
27 times (Porter & Oleson, 2013) and SDM was selected to allow the dynamic application of stochastic
28 distribution of infection of the susceptible population over time. SDM also allows the ability to apply
29 variables to control the transmission of the virus (social distancing measures) with which to test
30 interventions (Lopez & Rodo, 2020) (Milne & Xie, 2020).

31

32 The model concept is shown in figure 1 below.

⁴ iSee Systems <https://www.iseesystems.com/>



1

2 **Figure 1:** epidemiological model concept

3 **Data**

4 The SDM is calibrated with data describing the population, virus characteristics and actual
 5 outcomes. Population data are extracted from the Office for National Statistics (ONS) census
 6 projections by age and Clinical Commissioning Group (CCG) and applied to the ICS or population being
 7 modelled (see Localisation sector for further work). The virus characteristics are taken from the
 8 Imperial College COVID-19 Response Team (ICCRT) simulation, which informs United Kingdom
 9 government's national policy on the SARS-CoV-2 pandemic (Ferguson et al., 2020); namely the fatality
 10 and virus transmission rates by age group. Actual outcomes, for daily hospital deaths and admissions
 11 are taken from ICS situation reports which are consistent with NHS England reporting and hospital
 12 length of stay data are extracted from each acute hospital trust. Generic processed data is available
 13 by consulting (Groen & Turner, 2020).

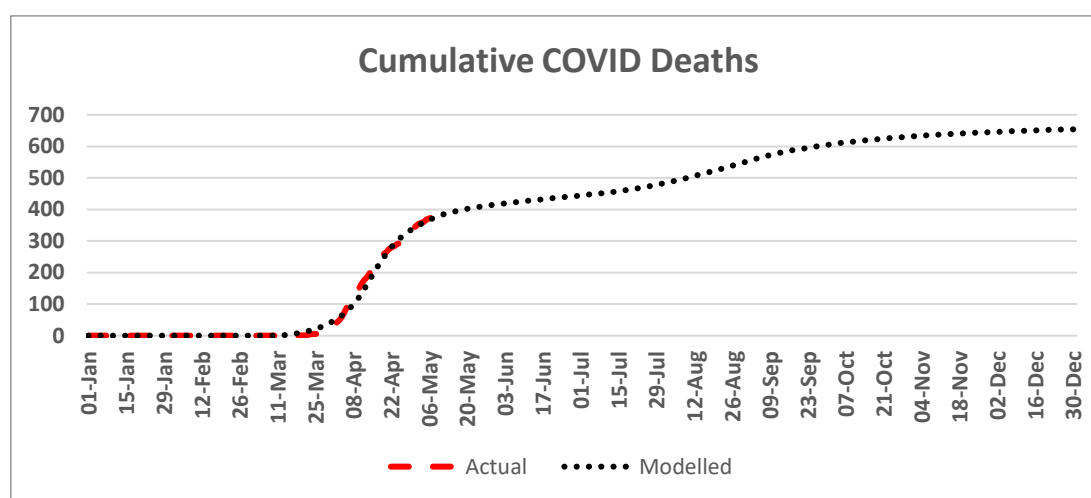
14 **Validation**

15 To maintain fidelity to the ICCRT simulation, the SDM was initially calibrated with United
 16 Kingdom population data and the outputs from both models matched ($R_0 = 2.4$, the estimated
 17 reproduction number at the time of validation). Both models temporally match for expected deaths
 18 and critical care bed provision based on proposed intervention efficacy.

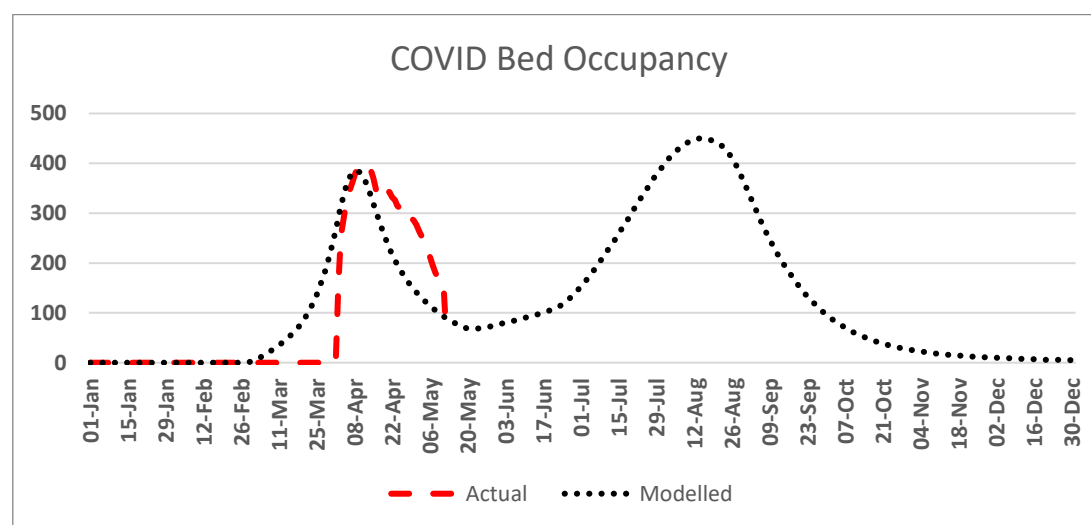
19

1 Adaptation and Localisation

2 Using the ICCRT simulation, the SDM categorised the initial susceptible population into age
3 groupings. To reflect local characteristics, this was augmented to include a risk profile (low, moderate,
4 and high) using population-based health profiles taken from a separate proprietary model (the Cohort
5 model). The cohort model uses data extracted from ONS and the Kent Integrated Dataset to create
6 prevalence and incidence for morbidities (including expected multi-morbidities) adjusted for each
7 English CCG. Models were calibrated for each ICS in the North East and North Cumbria region of
8 England, based on its constituent CCGs, and was seeded for initial infections 30 days prior to the first
9 cluster of deaths on sequential days and validated so that modelled outcomes for ICS hospital bed
10 occupation and deaths fitted actual situation report results. An example ICS results are shown in figure
11 2 and 3.



12
13 **Figure 2:** Model validation example 1



14
15 **Figure 3:** Model validation example 2

16

1 Scenarios

2 We set four scenarios to simulate the demand on healthcare service provision following the
 3 initial intervention to reduce potential virus transmitting contacts introduced by the UK government
 4 during March 2020. Baseline contacts pre-intervention (before March 2020) were set at a nominal
 5 value of 100 and adjusted for likely reductions from government interventions for the remainder of
 6 2020. The scenarios tested. The adjusted contact value and timings for these scenarios are
 7 summarised in table 1 below.

Description	
Scenario 1	The initial impact from the intervention is extended but weakens following initial success. Later in the year the impact from the intervention increases as a result of effective test, track, and trace.
Scenario 2	Gradual, medium to long term relaxation of social distancing from May 10th results in a reduction in the effectiveness of social distancing.
Scenario 3	Cyclical relax/renew - May 10th relaxation with a reduction in the effectiveness of social distancing following by subsequent lock down and release.
Scenario 4	Extended social distancing but weakening of the initial lock down followed by effective implementation of track and trace.

8 **Table 1:** Summary of scenarios modelled.

	Risk Profile	Jan	Feb	Mar	Apr	May	Jun	Jul	Aug	Sep	Oct	Nov	Dec
Scenario 1	Low	100	100	80	80	65	65	55	65	65	65	65	65
	Medium	100	100	85	85	75	75	65	75	75	75	75	75
	High	100	100	90	90	80	80	75	85	85	85	85	85
Scenario 2	Low	100	100	80	80	60	60	60	60	60	60	60	60
	Medium	100	100	85	85	70	70	70	70	70	70	70	70
	High	100	100	90	90	75	75	75	75	75	75	75	75
Scenario 3	Low	100	100	80	80	50	50	60	50	50	60	60	60
	Medium	100	100	85	85	60	60	70	60	60	70	70	70
	High	100	100	90	90	75	75	80	75	75	75	75	75
Scenario 4	Low	100	100	80	80	65	65	70	70	70	70	70	70
	Medium	100	100	85	85	75	75	80	80	80	80	80	80
	High	100	100	90	90	80	80	80	80	80	80	80	80

9
 10 **Table 2:** Model scenarios for contact adjustments during 2020.

11 Results

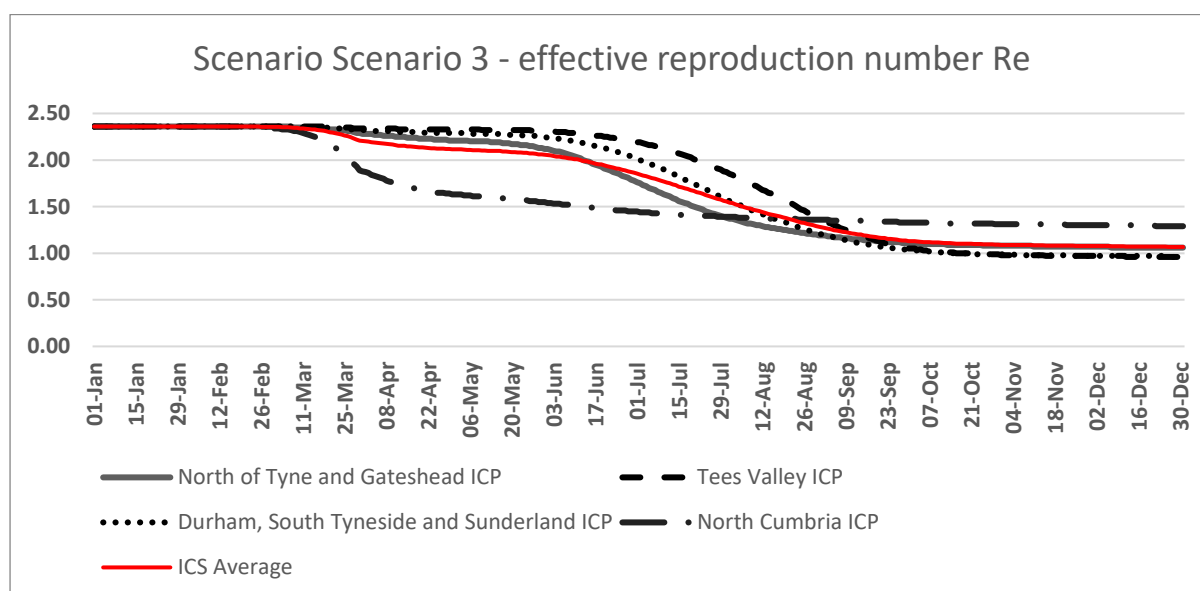
12 The scenarios were run for four local communities in the North East of England and North
 13 Cumbria. All calibration data were assumed the same except for population health needs and the
 14 seeding date required for timing in order to fit the model outcomes to actual. Modelled Outcomes

1 from the scenarios were analysed for hospital deaths, acute hospital bed occupancy split between bed
2 capacity requiring ventilation, continuous positive airway pressure (oxygen plus) and oxygen.
3 Epidemiological progression was also analysed using:

- 4 • the effective reproduction number - R_e (the proportion of overall population remaining
5 susceptible to the virus). $R_e = R_o \times (\text{population susceptible} / \text{total population})$
- 6 • the effective reproduction number over time - R_t (representing the average new infections
7 arising from active infections at time_t).

8 Epidemiology

9 The differences in susceptible population resulting from the pre-intervention viral spread can
10 be seen in the results in figure 4. The efficacy of the changing contact rate arising from the scenarios
11 creates dynamics in viral progression, for example West (i.e. North Cumbria) recorded earlier cases in
12 larger quantities than the other areas within the ICS and the effect can be seen in R_e lowering at a
13 more rapid rate in the period to April 2020.



14

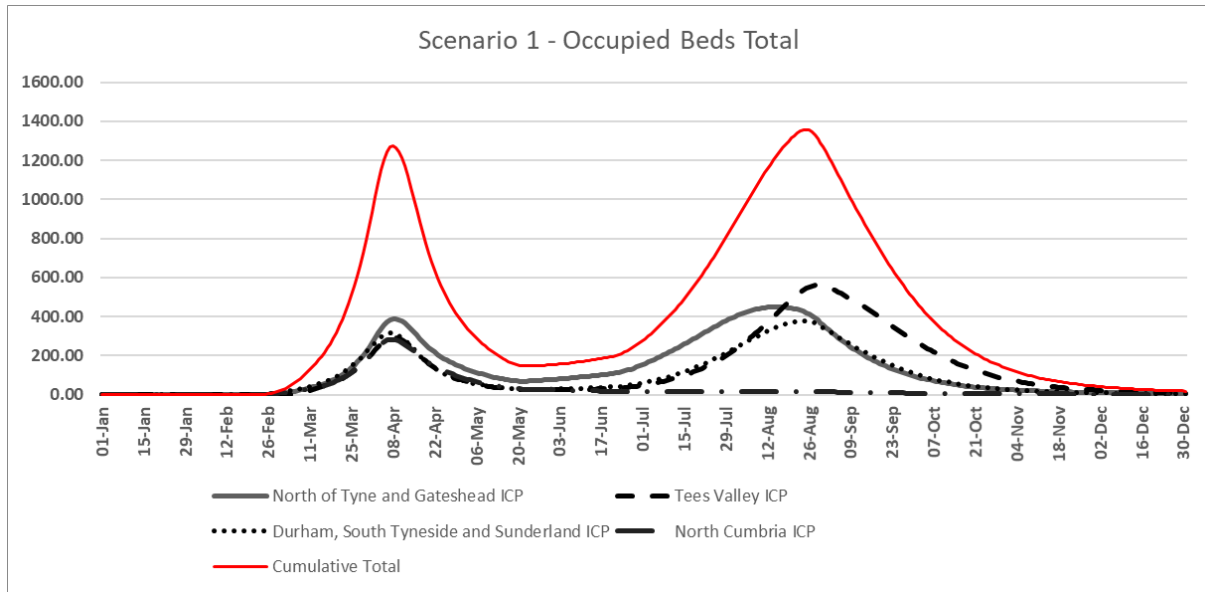
15

16 **Figure 4:** Differences in effective reproduction number R_e under scenario 3

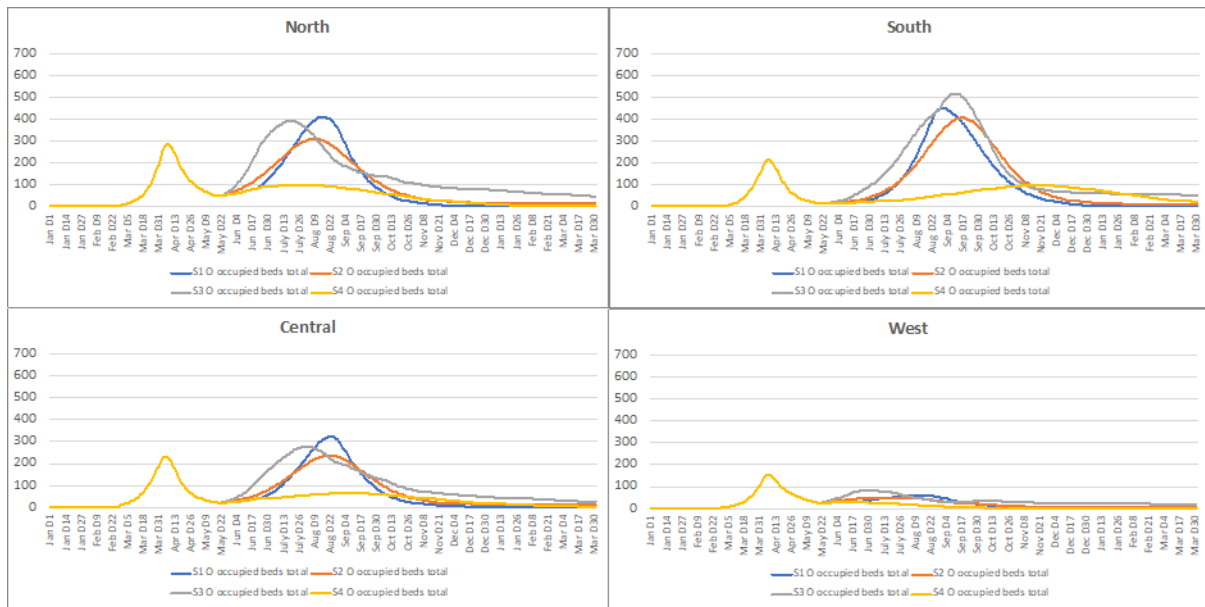
17 The dynamic of viral progression can be seen in the demand for acute hospital beds and deaths
18 in the following sections, modelled outputs for all four scenarios are fitted to actual performance from
19 the model inception until the data of simulation in mid-May 2020.

20

1 **Bed Occupation**



2
3 **Figure 5:** Showing scenario 1 results for the entire ICS then split by ICPs clearly showing variation between local communities.

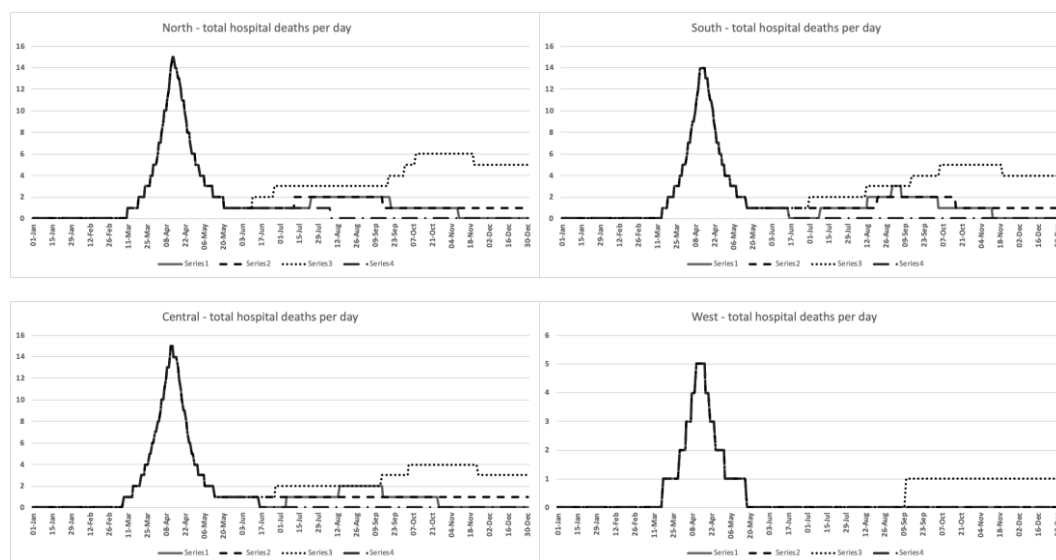


4
5 **Figure 6:** Showing scenario 1 results demand for oxygen beds by individual ICP, clearly showing local idiosyncrasies in terms
6 of demand.

7 Results above are split by locality in figure 6 modelling demand for oxygen beds. This
8 illustrates overall demand for this type of bed, however, we have modelled this for each type of SARS-
9 CoV-19 demand a more detailed analysis and anonymised data can be accessed at (Groen & Turner,
10 2020). Generally speaking the n beds is based on the , which accounts for the higher number of total
11 demand for such bed types. However, it is important to note that patients admitted to this type of
12 beds tend to have a shorter length of stay and are clinically less complicated to manage operationally.

13

1 Hospital Deaths



2
3
4 **Figure 7:** Deaths in hospitals modelled

5 The model is indicating a higher first peak in terms of hospital deaths, owing to the fact that
6 the cohort approach considers the remaining susceptibility amongst the uninfected population and
7 stratifies this by category of cohort.

8 Discussion

9 With regards to contact rate and seeding of the model – we have subjected our approach to
10 numerous tests to demonstrate that the overall outcomes from the pandemic, for example in terms
11 of deaths, are highly sensitive to the timing of initial seeding and the subsequent lock-down. We
12 applied the national model on a single data file on the 23rd March 2020. In areas of high initial seeding
13 of the virus the additional days of spread may result in differences in the overall number of deaths
14 expected and in the subsequent size of any second wave of the pandemic. This will rely on different
15 levels of the remaining susceptible populations after the observed initial peak. We certainly believe
16 that this strengthens the case for scenario planning of subsequent easing or resumption of any lock-
17 down measures on the basis our locally focused approach to modelling this pandemic.

18 The model is sensitive to two major variables outside of the virus characteristic, these are
19 seeding volume/date and the contact reduction. Model seeding assumes a certain number of
20 infections entering the region to create the virus uptake prior to the first peak, however it does not
21 currently assume any new cases coming from out of region after that time. This seems an unlikely
22 scenario and future version of the model will address this issue as more evidence on travel following
23 easing of government policy is made we aim to refine this using intelligence and conceptual
24 approaches such as outlined in (China CDC, 2020). This will be important as the current
25 epidemiological element of the model is one of self-perpetuating transmission – the current infected
26 population are the only ones who will contribute to new infections. Social distancing contacts also

1 depend on a less aggregated view. Local characteristics for potentially virus transmitting contacts can
2 be estimated through data including urban / rural or population density measures (Leung et al., 2020;
3 Li et al., 2020), household density, vulnerability indices and movement/transport (Kraemer et al.,
4 2020) see (Prem et al., 2020) for how these factors played a role in China’s approach to social isolation.
5 This would allow greater understanding of influences on clinical demand through more sophisticated
6 scenario building.

7 As per well-established literature, the model concurs on recent peer-reviewed publications
8 and popular media outlet coverage which draw attention to a ‘second wave’ scenario, see (World
9 Health Organization, 2020) and (Xu & Li, 2020) for example. Indeed, it is within that context that we
10 stress the importance of locally defined modelling approach (effectively; bottom up) which reflects
11 local population needs, which, when aggregated will comprise a more insightful and nuanced
12 approach to inform national approaches to this global challenge. We call on researchers to adopt our
13 approach within their own local context to ensure health and care demands are met locally within the
14 inevitable constraints that comes with national policy.

15

16 **Notes on Limitations**

17 Contact too sensitive – developed into multidimensional transmission by place, movement
18 vulnerability, social/domestic contact which will be applied to the age-based population health needs.
19 Questions over the small number needed for seeding compared to local estimates (may mean
20 infection rate is higher as per other papers). Model fitted to recorded hospital admissions and deaths
21 (although COVID deaths outside of hospital are modelled).

- 22 • Contact rate and seeding – highly sensitive independent factors
- 23 • Deaths peak in first wave – more high risk / vulnerable (from cohort model)
- 24 • Beds have generally higher demand in second (subsequent waves, depending on relaxation in
25 scenario)
- 26 • Time of initial infections important in epidemiology.
- 27 • The capacity numbers used in the reports remain high as they are in use nationally at this level
28 but we will look to work with providers to add more ‘accurate’ numbers in the coming week,
29 alongside those currently in use.

30

1 Citations

- 2 China CDC, W. B. (2020). *The Novel Coronavirus Pneumonia Emergency Response Epidemiology*
3 *Team. The epidemiological characteristics of an outbreak of 2019 novel coronavirus diseases*
4 *(COVID-19)—China.*
- 5 Ferguson, N. M., Laydon, D., Nedjati-Gilani, G., Imai, N., Ainslie, K., Baguelin, M., Bhatia, S.,
6 Boonyasiri, A., Cucunubá, Z., Cuomo-Dannenburg, G., Dighe, A., Dorigatti, I., Fu, H., Gaythorpe,
7 K., Green, W., Hamlet, A., Hinsley, W., Okell, L. C., Van Elsland, S., ... Ghani, A. C. (2020). Impact
8 of non-pharmaceutical interventions (NPIs) to reduce COVID-19 mortality and healthcare
9 demand. *Imperial.Ac.Uk, March*, 3–20. <https://doi.org/10.25561/77482>
- 10 Groen, B. M., & Turner, P. (2020). *SARS-CoV-19 North East and North Cumbria Data - Harvard*
11 *Dataverse.* <https://doi.org/https://doi.org/10.7910/DVN/MTK2NW>
- 12 Kraemer, M., Yang, C., Gutierrez, B., & al., et. (2020). The effect of human mobility and control
13 measures on the COVID-19 epidemic in China. *Science.*
- 14 Leung, K., Wu, J. T., Liu, D., & Leung, G. M. (2020). First-wave COVID-19 transmissibility and severity
15 in China outside Hubei after control measures, and second-wave scenario planning: a modelling
16 impact assessment. *The Lancet*, *395*(10233), 1382–1393. [https://doi.org/10.1016/S0140-](https://doi.org/10.1016/S0140-6736(20)30746-7)
17 [6736\(20\)30746-7](https://doi.org/10.1016/S0140-6736(20)30746-7)
- 18 Li, Q., Guan, X., Wu, P., Wang, X., Zhou, L., Tong, Y., Ren, R., Leung, K. S. M., Lau, E. H. Y., Wong, J. Y.,
19 Xing, X., Xiang, N., Wu, Y., Li, C., Chen, Q., Li, D., Liu, T., Zhao, J., Liu, M., ... Feng, Z. (2020). Early
20 Transmission Dynamics in Wuhan, China, of Novel Coronavirus-Infected Pneumonia. *The New*
21 *England Journal of Medicine*, *382*(13), 1199–1207. <https://doi.org/10.1056/NEJMoa2001316>
- 22 Lopez, L. R., & Rodo, X. (2020). A modified SEIR model to predict the COVID-19 outbreak in Spain:
23 simulating control scenarios and multi-scale epidemics. *MedRxiv*, 2020.03.27.20045005.
24 <https://doi.org/10.1101/2020.03.27.20045005>
- 25 Milne, G. J., & Xie, S. (2020). The Effectiveness of Social Distancing in Mitigating COVID-19 Spread: a
26 modelling analysis. *MedRxiv*, 2020.03.20.20040055.
27 <https://doi.org/10.1101/2020.03.20.20040055>
- 28 Minyard, K., Smith, T. A., Turner, R., Milstein, B., & Solomon, L. (2018). Community and
29 programmatic factors influencing effective use of system dynamic models. *System Dynamics*
30 *Review*, *34*(1–2), 154–171. <https://doi.org/10.1002/sdr.1596>
- 31 Porter, A. T., & Oleson, J. J. (2013). A Path-Specific SEIR Model for use with General Latent and
32 Infectious Time Distributions. *Biometrics*, *69*(1), 101–108. [https://doi.org/10.1111/j.1541-](https://doi.org/10.1111/j.1541-0420.2012.01809.x)
33 [0420.2012.01809.x](https://doi.org/10.1111/j.1541-0420.2012.01809.x)
- 34 Prem, K., Liu, Y., Russell, T., & al., et. (2020). The effect of control strategies to reduce social mixing
35 on outcomes of the COVID-19 epidemic in Wuhan, China: a modelling study. *Lancet Public*
36 *Health.*
- 37 World Health Organization. (2020). *Rolling updates on coronavirus disease (COVID-19): WHO*
38 *characterizes COVID-19 as a pandemic.* [http://www.euro.who.int/en/health-](http://www.euro.who.int/en/health-topics/communicable-diseases/influenza/data-and-statistics/pandemic-influenza/about-pandemic-phases)
39 [topics/communicable-diseases/influenza/data-and-statistics/pandemic-influenza/about-](http://www.euro.who.int/en/health-topics/communicable-diseases/influenza/data-and-statistics/pandemic-influenza/about-pandemic-phases)
40 [pandemic-phases](http://www.euro.who.int/en/health-topics/communicable-diseases/influenza/data-and-statistics/pandemic-influenza/about-pandemic-phases)
- 41 Xu, S., & Li, Y. (2020). Beware of the second wave of COVID-19. *The Lancet*, *395*(10233), 1321–1322.
42 [https://doi.org/10.1016/S0140-6736\(20\)30845-X](https://doi.org/10.1016/S0140-6736(20)30845-X)

43