

Diabetes is associated with increased risk for in-hospital mortality in patients with COVID-19: a systematic review and meta-analysis comprising 18,506 patients

Leonidas Palaiodimos MD^{1,2}, Natalia Chamorro-Pareja MD^{2,3}, Dimitrios Karamanis PhD⁴, Weijia Li MD^{2,3}, Phaedon D. Zavras MD^{2,3}, Priyanka Mathias MD^{2,5}, Damianos G. Kokkinidis MD^{2,3}

¹ Division of Hospital Medicine, Montefiore Medical Center, Bronx, NY, USA

² Albert Einstein College of Medicine, Bronx, NY, USA

³ Department of Medicine, Jacobi Medical Center, Bronx, NY, USA

⁴ Department of Economics, University of Piraeus, Attica, Greece

⁵ Division of Endocrinology, Montefiore Medical Center, Bronx, NY, USA

Running title: Diabetes as a prognostic factor for mortality in COVID-19

Key words: COVID-19; SARS-CoV-2; novel coronavirus; diabetes; mortality; prognostic factor; risk factor; predictor; systematic review; meta-analysis

Corresponding author:

Leonidas Palaiodimos, MD MSc

Division of Hospital Medicine, Montefiore Medical Center, Albert Einstein College of Medicine

111 East 210th street, Bronx, NY 10467, NW building, 8th floor

Email: leonidas.palaiodimos@gmail.com

Funding: None

Relationships with Industry and Conflict of Interest: None of the authors

Word count of the abstract: 198

Word count of the manuscript (excluding abstract and references): 2,014

Number of figures: 5

Number of tables: 3

Number of supplementary figures: 10

Number of references: 37

Abstract

Background: Infectious diseases are more frequent and can be associated with worse outcomes in patients with diabetes. Our aim was to systematically review and synthesize with a meta-analysis the available observational studies reporting the effect of diabetes in mortality among hospitalized patients with COVID-19.

Methods: Medline, Embase, Google Scholar, and medRxiv databases were reviewed. A random-effect model meta-analysis was used and I-square was utilized to assess the heterogeneity. In-hospital mortality was defined as the endpoint. Sensitivity, subgroup, and meta-regression analyses were performed.

Results: 18,506 patients were included in this meta-analysis (3,713 diabetics and 14,793 non-diabetics). Patients with diabetes were associated with a higher risk of death

compared to patients without diabetes (OR: 1.65; 95% CI: 1.35–1.96; I^2 77.4%). The heterogeneity was high. A study level meta-regression analysis was performed for all the important covariates and no significant interactions were found between the covariates and the outcome of mortality.

Conclusion: This meta-analysis shows that that the likelihood of death is 65% higher in diabetic hospitalized patients with COVID-19 compared to non-diabetics. Further studies are needed to assess whether this association is independent or not, as well as to investigate to role of glucose control prior or during the disease.

Introduction:

Diabetes Mellitus is one of the leading causes of morbidity and mortality in the world and is mainly associated with significant cardiovascular and renal complications. The estimated global prevalence was 9.3% in 2019 with an increasing trend (1, 2). In the United States alone, more than 34 million adults had known or undiagnosed diabetes in 2018 (3). In 2017, diabetes was listed as the underlying or contributing cause of death on 270,702 death certificates that corresponds to a crude rate of 83.1 per 100,000 persons (3).

Infectious diseases are more frequent and can be associated with worse outcomes in patients with diabetes (4). Therefore, it is not surprising that diabetes has been considered a possible risk factor or a predictor for worse outcomes in patients with Coronavirus Disease 2019 (COVID-19) (5-7). COVID-19 rapidly reached the level of pandemic and has caused more than 300 thousand deaths worldwide within a few months despite unprecedented mitigation measures (8). The strength of the association between the two pandemics, diabetes and COVID-19, has been investigated in observational cohorts around the world.

We aimed to systematically review and synthesize with a meta-analysis the available observational studies reporting the effect of diabetes in mortality among hospitalized patients with COVID-19.

Methods

This study was performed according to the Preferred Reporting Items for Systematic Reviews and Meta-Analyses (PRISMA) (9).

Literature search

We conducted a systematic literature search of the Medline, Embase, Google Scholar, and medRxiv (the preprint server for health sciences) up to May 10, 2020 for observational studies providing any kind of association between diabetes and mortality in hospitalized patients with COVID-19. Two investigators (LP, DGK) independently searched for eligible studies. In cases where there was a disagreement regarding the eligibility of a study, a third investigator (FZ) was involved in order consensus to be reached. The reference list of pertinent reviews and observational studies was also manually searched for further potentially eligible studies. A combination of the following keywords was used to perform our searches: "COVID-19", "SARS-CoV-2", "novel coronavirus", "risk factor", "mortality", and "death". The pre-specified inclusion criteria were: (i) studies included adult patients hospitalized for COVID-19, (ii) studies provided any kind of association between diabetes and mortality in the aforementioned

population. The prespecified exclusion criteria were: (i) certainly or possibly duplicated or overlapping patient populations and (ii) studies included prespecified patient populations based on a specific diagnosis (e.g. only hypertensives or only patients with cancer). In the cases of duplicated or overlapping populations, the studies with the larger samples were included.

Data extraction and outcomes

Data extraction was performed based on a pre-defined data extraction form by two independent investigators (NCP, WL) blinded to each other. The pre-specified outcome was in-hospital mortality.

Risk of bias assessment

Two independent reviewers (NCP, PM) assessed the risk of bias of the included studies with Quality in Prognosis Studies tool (QUIPS) (10). Studies were assessed as having low, moderate, serious or critical risk of bias for the following domains: study participation, study attrition, prognostic factor measurement, confounding measurement and account, outcome measurement, analysis and reporting.

Statistical analysis

We estimated the odds ratios (ORs) and their respective 95% confidence intervals (CI) for all the individual studies. When neither OR nor event rates were provided, we used the unadjusted hazard ratios and converted them to ORs given the short follow-up

period. For studies that provided both adjusted and unadjusted ORs, we used the unadjusted effect estimate. We performed a meta-analysis using the random effects model according to the method of Der Simonian and Laird. Heterogeneity among trials for each outcome was assessed with the I-squared test. Values < 25% indicated low, 25 to 70% moderate, and > 70% high heterogeneity. Egger test and funnel plots were used to assess for publication bias. Subgroup and sensitivity analyses were performed based on the location where the studies were conducted and the mean/median age. A meta-regression analysis was performed for important covariates in order to address high heterogeneity among included studies. Statistical significance level was set at 0.05 with CI calculated at the 95% level. Stata 14.1 (Stata Corp., College Station, Texas) was used for statistical analysis.

Results:

Out of 1,721 studies screened from the literature and on-line sources, fourteen observational studies (twelve retrospective and two prospective) met the prespecified criteria for inclusion in the analysis (**Figure 1**) (11-24). The characteristics of these studies are summarized in **Table 1**. Overall, all the studies were found to have low risk of bias (**Figure 2**). Five studies were conducted in Asia, five in the United States and four in Europe. The total number of patients included in the final dataset was 18,506 patients: 3,713 diabetics and 14,793 non-diabetics. The mean or median age was above 60 years

in twelve studies. 43% (7,967) of the population was women. Among studies which reported their results in event rates, the overall frequency of death events in diabetics was 41.1% (991 out of 2,413) compared to 17.6% (2,113 out of 12,012) in the non-diabetic group (the numbers of death events in the groups of interest were not provided in three studies; instead, odds or hazard ratios were provided). In our meta-analysis of 14 studies, we found that patients with diabetes were associated with a higher risk of death compared to patients without diabetes, but with significant heterogeneity (OR: 1.65; 95% CI: 1.35–1.96; I^2 77.4%; **Figure 3**).

Sensitivity and subgroup analyses

Sensitivity analysis were conducted for studies that were performed in the United States (N=5), Asia (5), and Europe-United States (N=9). Similarly, to the overall analysis, our sensitivity analysis for studies conducted in the United States revealed a higher chance of death among diabetic patients compared to non-diabetes group (OR: 1.34; 95% CI: 1.04–1.85; I^2 73.7%). We found a similar association for studies conducted in Asia (OR: 2.12; 95% CI: 1.09–3.16; I^2 61.1%) and among studies conducted in the United States or Europe (OR: 1.60; 95% CI: 1.27–1.93; I^2 82.8%, **Figure 4**). Subgroup analysis of the studies that had a mean or median age less than 60 years (N=2, both from Asia) did not show a significant difference in mortality between diabetics and non-diabetics (OR: 2.3; 95% CI: 0.01–4.92; I^2 75.5%, **Figure 4**) but was probably limited by the small sample given the wide confidence intervals.

Assessment for Publication Bias

Assessment for publication bias was performed with two different ways. First, an Egger test was conducted that was not suggestive of publication bias ($P = 0.255$). Second, we performed a visual assessment of the results of the funnel plot which was not indicative of publication bias, as well (**Figure 5**).

Meta-regression analysis

A study level meta-regression analysis was performed for all the important covariates (age: $p=0.474$, female sex: $p=0.766$, hypertension: $p=0.524$, coronary artery disease: $p=0.808$, heart failure: $p=0.263$, chronic kidney disease: $p=0.875$, history of stroke: $p=0.252$, smoking history: $p=0.639$, COPD history: $p=0.620$, and malignancy history: $p=0.329$). No significant interactions were found between the covariates and the outcome of mortality. The detailed meta-regression results can be found in **Table 3** and **online supplementary material (supplementary figures 1-10)**

Discussion:

Our study was a systematic review and meta-analysis of observational studies reporting on the association between diabetes and mortality in adult hospitalized patients with COVID-19. Our findings can be summarized as following: i) overall, death was 65% more likely to occur in diabetic inpatients compared to non-diabetic ones but was limited by significant heterogeneity, ii) this association remained significant when the analysis

focused on geographical regions of study origin with, once again, significant heterogeneity, iii) our meta-regression analysis did not show an association between how frequent the other significant comorbidities were across different studies and our results.

The findings of our meta-analysis are consistent with the results of some of the large observational cohorts. In one of the largest retrospective studies of hospitalized patients with COVID-19 in New York, diabetics were 33.8% (1,808/5,700) of the total inpatient population (25), whereas the prevalence of diabetes in the general population in New York is 10.5% (26). An early cohort of 1,099 patients with COVID-19 from China revealed that 17.8% of the whole cohort developed severe disease, while the respective rate in the diabetic subgroup was 34.6% (27). On the other hand, another large study from New York (4,103 patients) showed that diabetes is not an independent risk factor for development of critical illness, although a trend was noted (OR: 1.14, 95% CI: 0.83-1.58). (28). Smaller cohorts included in this meta-analysis did not show an association of diabetes with in-hospital mortality, but these studies had relatively small samples and were likely underpowered (18, 22, 23). Given the heterogeneity of the results across the literature, our meta-analysis comes to answer this significant question by utilizing a total sample of 18,506 patients.

Diabetes is associated with higher susceptibility to infectious diseases and higher infection-related mortality (29). A retrospective matched-control study from Canada of

more than one million participants showed that diabetics had significantly higher risk to be hospitalized due to an infection, develop sepsis, and die regardless of the affected system or organ or whether the infection was viral or bacterial (30). Similarly, an English cohort of more than 100 thousand diabetics and 200 thousand control subjects revealed that diabetic patients had significantly higher rates of all types of infections with an almost double risk for hospitalization and death compared to non-diabetics (31). Among others, diabetics had 40% higher rates of lower respiratory infections (101.1 vs. 73.3; per 1,000 patients/year) (31). In the 2009 H1N1 pandemic, it was noted that diabetes tripled the risk of hospitalization and quadrupled the risk of admission to intensive care units (32).

Reduced T-lymphocytes response, decreased neutrophil function, impaired humoral immunity, increased adherence of microorganisms in diabetic cells, and increased virulence of some microorganisms in a high-glucose environment are some of the pathogenetic mechanisms that make diabetics more susceptible to infections (4, 33). In addition, diabetes is a major cause of endothelial dysfunction (34). The increasing evidence of endothelial involvement in severe COVID-19 (35, 36), which potentially contributes to COVID-19-associated coagulopathy (37), could raise the hypothesis that the diabetic dysfunctional endothelium is more susceptible to further damage related to COVID-19.

The main strengths of our study are its strict methodology, robust analysis, and the relatively large number of included studies and overall patient sample. Notably three continents and most of the countries that had high COVID-19 incidence were represented. Sensitivity, subgroup, and meta-regression analyses were performed as needed.

The main limitation of our study is the lack of data on glucose control prior or during hospitalization. Therefore, we could not estimate the associations of controlled and uncontrolled diabetes with in-hospital mortality and we recognize that the association would probably be stronger in patients with uncontrolled diabetes and weaker in patients with controlled diabetes. A patient-level meta-analysis would be needed to assess this very important parameter. Second, the estimated association is not adjusted for other important covariates. Unfortunately, only three of the included studies provided adjusted estimates. We tried to solve this methodological issue by performing a meta-regression analysis which showed that the different rates of the other major comorbidities across different studied did not have an impact on the results. Similarly, a patient-level meta-analysis would be the ideal way to adjust for other significant covariates. Third, our meta-analysis was limited by significant heterogeneity, which we tried to assess by using a random-effects model, performing subgroups and sensitivity, and meta-regression analysis.

In conclusion, the present systematic review and meta-analysis revealed that the likelihood of death is 65% higher in diabetic hospitalized patients with COVID-19 compared to non-diabetics. Further studies are needed to assess whether this association is independent or not, as well as to investigate the role of glucose control prior or during the disease. In the meantime, attention should be paid in preventing diabetes and its complications and protecting this population from COVID-19 given the higher chance for adverse outcomes once they are diagnosed with the disease. In addition, diabetic patients diagnosed with COVID-19 should be treated with attention given the possible higher risk for adverse outcomes. While we recognize the limitations, we hope that our study will add to the continuous research of the effect of diabetes in COVID-19.

References

1. Zhou B, Lu Y, Hajifathalian K, Bentham J, Di Cesare M, Danaei G, Bixby H, Cowan MJ, Ali MK, Taddei C, Lo WC. Worldwide trends in diabetes since 1980: a pooled analysis of 751 population-based studies with 4·4 million participants. *The Lancet*. 2016 Apr 9;387(10027):1513-30.
2. Saeedi P, Petersohn I, Salpea P, Malanda B, Karuranga S, Unwin N, Colagiuri S, Guariguata L, Motala AA, Ogurtsova K, Shaw JE. Global and regional diabetes prevalence estimates for 2019 and projections for 2030 and 2045: Results from the International Diabetes Federation Diabetes Atlas. *Diabetes research and clinical practice*. 2019 Nov 1;157:107843.

3. Centers for Disease Control and Prevention. National diabetes statistics report, 2020. Atlanta, GA: Centers for Disease Control and Prevention, US Department of Health and Human Services. 2020.
4. Casqueiro J, Casqueiro J, Alves C. Infections in patients with diabetes mellitus: A review of pathogenesis. Indian journal of endocrinology and metabolism. 2012 Mar;16(Suppl1):S27.
5. Hussain A, Bhowmik B, do Vale Moreira NC. COVID-19 and diabetes: Knowledge in progress. Diabetes Research and Clinical Practice. 2020 Apr 9:108142.
6. Maddaloni E, Buzzetti R. Covid-19 and diabetes mellitus: unveiling the interaction of two pandemics. Diabetes/Metabolism Research and Reviews. 2020 Mar 31.
7. Angelidi AM, Belanger MJ, Mantzoros CS. COVID-19 and diabetes mellitus: what we know, how our patients should be treated now, and what should happen next. Metabolism-Clinical and Experimental. 2020 Apr 19.
8. WHO Coronavirus Disease (COVID-19) Dashboard. Updated: May 19, 2020. Accessed: May 19, 2020. <https://covid19.who.int/>
9. Moher D, Liberati A, Tetzlaff J, et al. Preferred reporting items for systematic reviews and meta-analyses: the PRISMA statement. Ann Intern Med 2009; 151: 264–269.
10. Hayden JA, van der Windt DA, Cartwright JL, Côté P, Bombardier C. Assessing bias in studies of prognostic factors. Annals of internal medicine. 2013 Feb 19;158(4):280-6.
11. Guan WJ, Liang WH, Zhao Y, Liang HR, Chen ZS, Li YM, Liu XQ, Chen RC, Tang CL, Wang T, Ou CQ. Comorbidity and its impact on 1590 patients with Covid-19 in China: A Nationwide Analysis. European Respiratory Journal. 2020 May 1;55(5).
12. Han M, Ma K, Wang X, Yan W, Wang H, You J, Wang Q, Chen H, Wang J, Chen L, Xu D. Higher Fasting Plasma Glucose Reduced the Survival Rate of 306 Hospitalized Patients with COVID-19 in Wuhan, China.

13. Zeng X, Fan H, Lu D, Huang F, Meng X, Li Z, Tang M, Zhang J, Liu N, Liu Z, Zhao J. Association between ABO blood groups and clinical outcome of coronavirus disease 2019: Evidence from two cohorts. medRxiv. 2020 Jan 1.
14. Nikpouraghdam M, Farahani AJ, Alishiri G, Heydari S, Ebrahimnia M, Samadinia H, Sepandi M, Jafari NJ, Izadi M, Qazvini A, Dorostkar R. Epidemiological characteristics of coronavirus disease 2019 (COVID-19) patients in IRAN: A single center study. Journal of Clinical Virology. 2020 Apr 21.
15. Javanian M, Bayani M, Shokri M, Sadeghi-Haddad-Zavareh M, Babazadeh A, Yeganeh B, Mohseni S, Mehraein R, Sepidarkish M, Bijani A, Rostami A. Clinical and laboratory findings from patients with COVID-19 pneumonia in Babol North of Iran: a retrospective cohort study. Romanian Journal of Internal Medicine. 2020 May 11;1(ahead-of-print).
16. Rossi PG, Marino M, Formisano D, Venturelli F, Vicentini M, Grilli R, Reggio Emilia COVID-19 Working Group. Characteristics and outcomes of a cohort of SARS-CoV-2 patients in the Province of Reggio Emilia, Italy. medRxiv. 2020 Jan 1.
17. Borobia AM, Carcas AJ, Arnalich F, Alvarez-Sala R, Montserrat J, Quintana M, Figueira JC, Santos-Olmo RM, Garcia-Rodriguez J, Martin-Vega A, Ramirez E. A cohort of patients with COVID-19 in a major teaching hospital in Europe. medRxiv. 2020 Jan 1.
18. Perez Guzman PN, Daunt A, Mukherjee S, Crook P, Forlano R, Kont M, Lochen A, Vollmer M, Middleton P, Judge R, Harlow C. Report 17: Clinical characteristics and predictors of outcomes of hospitalized patients with COVID-19 in a London NHS Trust: a retrospective cohort study.
19. Tomlins J, Hamilton F, Gunning S, Sheehy C. Clinical features of 95 sequential hospitalized patients with novel coronavirus 2019 disease (COVID-19), the first UK cohort. The Journal of Infection. 2020 Apr 27.
20. Levy TJ, Richardson S, Coppa K, Barnaby DP, McGinn T, Becker LB, Davidson KW, Hirsch JS, Zanos T, Northwell COVID-19 Research Consortium. Estimating

Survival of Hospitalized COVID-19 Patients from Admission Information. medRxiv. 2020 Jan 1.

21. Wang Z, Zheutlin AB, Kao YH, Ayers KL, Gross SJ, Kovatch P, Nirenberg S, Charney AW, Nadkarni GN, O'Reilly PF, Just AC. Analysis of hospitalized COVID-19 patients in the Mount Sinai Health System using electronic medical records (EMR) reveals important prognostic factors for improved clinical outcomes. medRxiv. 2020 Jan 1.

22. Cummings MJ, Baldwin MR, Abrams D, Jacobson SD, Meyer BJ, Balough EM, Aaron JG, Claassen J, Rabbani LE, Hastie J, Hochman BR. Epidemiology, clinical course, and outcomes of critically ill adults with COVID-19 in New York City: a prospective cohort study. *The Lancet*. 2020 May 19.

23. Palaiodimos L, Kokkinidis DG, Li W, Karamanis D, Ognibene J, Arora S, Southern WN, Mantzoros CS. Severe obesity is associated with higher in-hospital mortality in a cohort of patients with COVID-19 in the Bronx, New York. *Metabolism*. 2020 May 16:154262.

24. Bode B, Garrett V, Messler J, McFarland R, Crowe J, Booth R, Klonoff DC. Glycemic characteristics and clinical outcomes of COVID-19 patients hospitalized in the United States. *Journal of Diabetes Science and Technology*. 2020 May 9:1932296820924469.

25. Richardson S, Hirsch JS, Narasimhan M, Crawford JM, McGinn T, Davidson KW, Barnaby DP, Becker LB, Chelico JD, Cohen SL, Cookingham J. Presenting characteristics, comorbidities, and outcomes among 5700 patients hospitalized with COVID-19 in the New York City area. *Jama*. 2020 Apr 22.

26. New York State. Department of Health. Diabetes and Diabetes Prevention. Updated: November 2019. Accessed May 23, 2020. <https://www.health.ny.gov/diseases/conditions/diabetes/>

27. Guan WJ, Ni ZY, Hu Y, Liang WH, Ou CQ, He JX, Liu L, Shan H, Lei CL, Hui DS, Du B. Clinical characteristics of coronavirus disease 2019 in China. *New England journal of medicine*. 2020 Apr 30;382(18):1708-20.
28. Petrilli CM, Jones SA, Yang J, Rajagopalan H, O'Donnell LF, Chernyak Y, Tobin K, Cerfolio RJ, Francois F, Horwitz LI. Factors associated with hospitalization and critical illness among 4,103 patients with COVID-19 disease in New York City. *medRxiv*. 2020 Jan 1.
29. Knapp S. Diabetes and infection: Is there a link?-A mini-review. *Gerontology*. 2013;59(2):99-104.
30. Shah BR, Hux JE. Quantifying the risk of infectious diseases for people with diabetes. *Diabetes care*. 2003 Feb 1;26(2):510-3.
31. Carey IM, Critchley JA, DeWilde S, Harris T, Hosking FJ, Cook DG. Risk of infection in type 1 and type 2 diabetes compared with the general population: a matched cohort study. *Diabetes Care*. 2018 Mar 1;41(3):513-21.
32. Allard R, Leclerc P, Tremblay C, Tannenbaum TN. Diabetes and the severity of pandemic influenza A (H1N1) infection. *Diabetes care*. 2010 Jul 1;33(7):1491-3.
33. Geerlings SE, Hoepelman AI. Immune dysfunction in patients with diabetes mellitus (DM). *FEMS Immunology & Medical Microbiology*. 1999 Dec 1;26(3-4):259-65.
34. Avogaro A, Albiero M, Menegazzo L, de Kreutzenberg S, Fadini GP. Endothelial dysfunction in diabetes: the role of reparatory mechanisms. *Diabetes care*. 2011 May 1;34(Supplement 2):S285-90.
35. Varga Z, Flammer AJ, Steiger P, Haberecker M, Andermatt R, Zinkernagel AS, Mehra MR, Schuepbach RA, Ruschitzka F, Moch H. Endothelial cell infection and endotheliitis in COVID-19. *The Lancet*. 2020 May 2;395(10234):1417-8.
36. Escher R, Breakey N, Lämmle B. Severe COVID-19 infection associated with endothelial activation. *Thrombosis Research*. 2020 Jun 1;190:62.

37. Connors JM, Levy JH. COVID-19 and its implications for thrombosis and anticoagulation. *Blood*. 2020 Apr 27.

Table 1: Characteristics of the included studies

Study	Country	Region	Institution	Study design	First patient	Last patient	Number of included patients
Guan	China	31 regions (including Wuhan)	Multicenter	Retrospective	December 25	January 31	1,590
Han	China	Wuhan	Tongji Hospital	Retrospective	February 2	February 15	306
Zeng	China	Xi'an and Wuhan	Multicenter (not Tongji hospital)	Retrospective	February 5	March 20	97
Nikpouraghdam	Iran	Tehran	Baqiyatallah Hospital	Retrospective	February 19	April 15	2,964
Javanian	Iran	Babol	Babol University of Medical Sciences	Retrospective	February 25	March 12	100
Rossi	Italy	Reggio Emilia	Multicenter	Prospective	February 27	April 2	1,075 ^a
Borobia	Spain	Madrid	La Paz University Hospital	Retrospective	February 25	April 19	2,226
Perez Guzman	United Kingdom	London	Imperial College Healthcare NHS Trust	Retrospective	February 25	April 5	520
Tomlins	United Kingdom	Bristol	North Bristol NHS Trust	Retrospective	March 1	March 30	95
Levy	United States	New York	Northwell Health	Retrospective	March 1	April 12	5,233
Wang	United States	New York	Mount Sinai Health System	Retrospective	March 7	April 15	3,273
Cummings	United States	New York	New York-Presbyterian	Prospective	March 2	April 1	257
Palaiodimos	United States	New York	Montefiore Medical Center	Retrospective	March 9	March 22	200
Bode	United States	10 states (not New York)	Multicenter	Retrospective	March 1	April 6	570 ^b

Notes: a. Only the subset of patients who were hospitalized were included, b. Only the subset of patients who had been discharged or died were included

Table 2: Baseline characteristics of patients per included study

Study	Age	Female (n, %)	DM (n, %)	HTN (n, %)	HLD (n, %)	CAD (n, %)	HF (n, %)	CKD (n, %)	CVA (n, %)	Smoking (n, %)	COPD (n, %)	Malignancy (n, %)
Guan	48.9±16.3 ^a	674 (42.7)	130 (8.2)	269 (16.9)	NA	59 (3.7)	NA	NA	30 (1.9)	111 (7.0)	24 (1.5)	NA
Han	60 (49-70) ^b	132 (43.1)	129 (42.2)	119 (38.9)	NA	25 (8.2)	NA	4 (1.3)	11 (3.6)	5 (1.6)	18 (5.9)	18 (5.9)
Zeng	67 (57-75) ^b	38 (39.2)	26 (26.8)	47 (48.5)	NA	NA	NA	8 (8.2)	NA	NA	8 (8.2)	NA
Nikpouraghdam	55.5±15.2 ^a	1,009 (34.0)	113 (3.8)	59 (1.9)	NA	37(1.3)	NA	18 (0.6)	NA	NA	60 (2.0)	17 (0.6)
Javanian	60.1±13.9 ^a	49 (49.0)	37 (37.0)	32 (32.0)	NA	NA	NA	12 (12.0)	3 (3.0)	NA	12 (12.0)	4 (4.0)
Rossi	63.2 ^c	418 (38.9)	175 (16.3)	280 (26.0)	85 (7.9)	115 (10.6)	96 (8.9)	45 (4.2)	NA	NA	91 (8.5)	167 (15.5)
Borobia	61 (46-78) ^b	1152 (51.8)	381 (17.1)	920 (41.3)	NA	NA	NA	174 (7.8)	NA	157 (7.1)	153 (6.9)	385 (17.3)
Perez Guzman	67 (41-93) ^b	198 (38.0)	138 (26.5)	187 (36.0)	82 (16.0)	43 (8.2)	21 (4.0)	70 (13.4)	34 (6.5)	NA	20 (3.8)	46 (8.8)
Tomlins	75 (59-82) ^b	35 (37.0)	37/95 (38.9)	35 (37.0)	NA	21 (22.0)	15 (16.0)	22 (23.0)	8 (8.4)	NA	10 (11.0)	20 (21.0)
Levy	21-106 ^d	2,176 (41.6)	1414 (27.0)	2474 (50.2)	NA	454 (9.2)	219 (4.4)	326 (6.6)	NA	NA	NA	NA
Wang	60 (46-71) vs. 75 (65-84) ^e	1,399 (42.7)	768 (23.5)	1082 (33.0)	NA	NA	NA	NA	NA	116 (3.5)	NA	233 (7.1)
Cummings	62 (51-72) ^b	87 (34.0)	92 (35.8)	162 (63.0)	NA	NA	NA	37 (14.0)	NA	NA	24 (9.0)	18 (7.0)
Palaiodimos	64 (50-73.5) ^b	102 (51.0)	79/200 (39.5)	152 (76.0)	92 (46.2)	33 (16.5)	34 (17.0)	58 (29.0)	22 (11.0)	65 (32.5)	28 (14.0)	11 (5.5)
Bode	65 (24-95) vs. 61 (18-101) ^f	498 (44.4)	184 (32.3)	NA	NA	NA	NA	NA	NA	NA	NA	NA

Abbreviations: DM=diabetes mellitus, HTN=hypertension, HLD=hyperlipidemia, CAD=coronary artery disease, HF=heart failure, CKD=chronic kidney disease, CVA=cerebrovascular accident, COPD=chronic obstructive pulmonary, NA=non-available

Notes: a. mean±SD, b. median (IQR), c. mean, d. median (range) in diabetics vs. non-diabetics, d. range, e. median (IQR) in discharged vs. deceased, f. median (range) in diabetics vs. non-diabetics

Table 3: Results of the meta-regression analysis

Variables	Coefficient	Standard error	p-value
Age	-0.019	0.026	0.474
Female	-0.003	0.010	0.766
HTN	-0.005	0.007	0.524
CAD	0.594	0.361	0.808
HF	0.026	0.019	0.263
CKD	-0.003	0.018	0.875
CVA	-0.078	0.058	0.252
Smoking	-0.012	0.024	0.639
COPD	-0.022	0.043	0.620
Malignancy	0.025	0.024	0.329

Abbreviations: HTN=hypertension, CAD=coronary artery disease, HF=heart failure, CKD=chronic kidney disease, CVA=cerebrovascular accident, COPD=chronic obstructive pulmonary disease

Figure 1. PRISMA 2009 flow diagram

Figure 2. Risk of bias assessment based on the Quality in Prognosis Studies (QUIPS) tool

Figure 3. Overall analysis: diabetes vs. no diabetes for in-hospital mortality

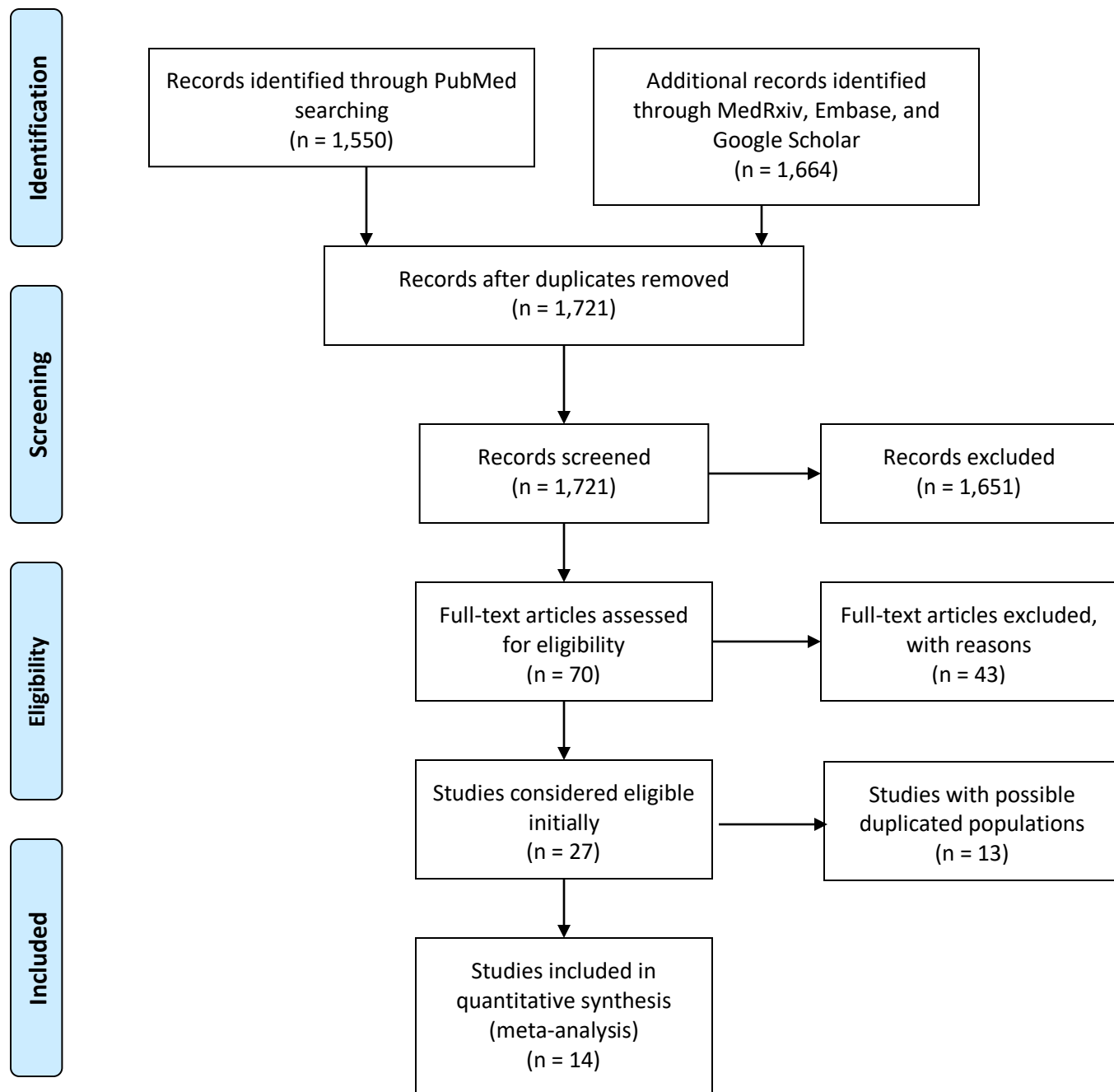
Figure 4. Sensitivity and subgroup analyses based on the region of the study origin and the mean/median age of the study population: diabetes vs. no diabetes for in-hospital mortality

Figure 5. Funnel plot for assessment of publication bias

Online supplementary material. Ten graphs of the meta-regression analyses for age, female sex, hypertension, coronary artery disease, heart failure, chronic kidney disease, history of stroke, smoking history, COPD history, and malignancy, respectively.



PRISMA 2009 Flow Diagram



From: Moher D, Liberati A, Tetzlaff J, Altman DG, The PRISMA Group (2009). Preferred Reporting Items for Systematic Reviews and Meta-Analyses: The PRISMA Statement. PLoS Med 6(7): e1000097. doi:10.1371/journal.pmed1000097

For more information, visit www.prisma-statement.org.

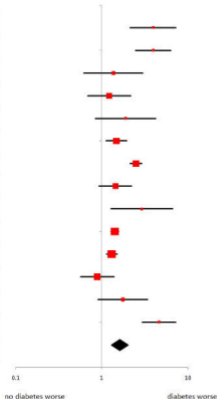


	Climate	Water	Energy	Maritime transport	Infrastructure	Health	Education	Peace & security	Environment	Gender	Humanity	Countering	Disruptive	Trade
1. Global participation	Low	Low	Low	Low	Low	Low	Low	Low	High	Low	Low	Low	Low	Low
2. Global attention	High	High	High	High	High	High	High	High	High	High	High	High	High	High
3. Regional attention to the sector	Low	Low	Low	Low	Low	Low	Low	Low	Low	Low	Low	Low	Low	Low
4. Cross-sector engagement	Low	Low	Low	Low	Low	Low	Low	Low	Low	Low	Low	Low	Low	Low
5. Global critical thinking	Low	High	Low	Low	High	Low	High	Low	High	Low	Low	Low	Low	High
6. Disruption to sector & interlinking	Low	Low	Low	Low	Low	Low	Low	Low	Low	Low	Low	Low	Low	Low

What is the overall picture? (A) (B) (C) (D) (E) (F) (G) (H) (I) (J) (K) (L) (M) (N) (O) (P) (Q) (R) (S) (T) (U) (V) (W) (X) (Y) (Z) (AA) (AB) (AC) (AD) (AE) (AF) (AG) (AH) (AI) (AJ) (AK) (AL) (AM) (AN) (AO) (AP) (AQ) (AR) (AS) (AT) (AU) (AV) (AW) (AX) (AY) (AZ) (BA) (BB) (BC) (BD) (BE) (BF) (BG) (BH) (BI) (BJ) (BK) (BL) (BM) (BN) (BO) (BP) (BQ) (BR) (BS) (BT) (BU) (BV) (BW) (BX) (BY) (BZ) (CA) (CB) (CC) (CD) (CE) (CF) (CG) (CH) (CI) (CJ) (CK) (CL) (CM) (CN) (CO) (CP) (CQ) (CR) (CS) (CT) (CU) (CV) (CW) (CX) (CY) (CZ) (DA) (DB) (DC) (DD) (DE) (DF) (DG) (DH) (DI) (DJ) (DK) (DL) (DM) (DN) (DO) (DP) (DQ) (DR) (DS) (DT) (DU) (DV) (DW) (DX) (DY) (DZ) (EA) (EB) (EC) (ED) (EE) (EF) (EG) (EH) (EI) (EJ) (EK) (EL) (EM) (EN) (EO) (EP) (EQ) (ER) (ES) (ET) (EU) (EV) (EW) (EX) (EY) (EZ) (FA) (FB) (FC) (FD) (FE) (FF) (FG) (FH) (FI) (FJ) (FK) (FL) (FM) (FN) (FO) (FP) (FQ) (FR) (FS) (FT) (FU) (FV) (FW) (FX) (FY) (FZ) (GA) (GB) (GC) (GD) (GE) (GF) (GG) (GH) (GI) (GJ) (GK) (GL) (GM) (GN) (GO) (GP) (GQ) (GR) (GS) (GT) (GU) (GV) (GW) (GX) (GY) (GZ) (HA) (HB) (HC) (HD) (HE) (HF) (HG) (HH) (HI) (HJ) (HK) (HL) (HM) (HN) (HO) (HP) (HQ) (HR) (HS) (HT) (HU) (HV) (HW) (HX) (HY) (HZ) (IA) (IB) (IC) (ID) (IE) (IF) (IG) (IH) (II) (IJ) (IK) (IL) (IM) (IN) (IO) (IP) (IQ) (IR) (IS) (IT) (IU) (IV) (IW) (IX) (IY) (IZ) (JA) (JB) (JC) (JD) (JE) (JF) (JG) (JH) (JI) (JJ) (JK) (JL) (JM) (JN) (JO) (JP) (JQ) (JR) (JS) (JT) (JU) (JV) (JW) (JX) (JY) (JZ) (KA) (KB) (KC) (KD) (KE) (KF) (KG) (KH) (KI) (KJ) (KK) (KL) (KM) (KN) (KO) (KP) (KQ) (KR) (KS) (KT) (KU) (KV) (KW) (KX) (KY) (KZ) (LA) (LB) (LC) (LD) (LE) (LF) (LG) (LH) (LI) (LJ) (LK) (LL) (LM) (LN) (LO) (LP) (LQ) (LR) (LS) (LT) (LU) (LV) (LW) (LX) (LY) (LZ) (MA) (MB) (MC) (MD) (ME) (MF) (MG) (MH) (MI) (MJ) (MK) (ML) (MN) (MO) (MP) (MQ) (MR) (MS) (MT) (MU) (MV) (MW) (MX) (MY) (MZ) (NA) (NB) (NC) (ND) (NE) (NF) (NG) (NH) (NI) (NJ) (NK) (NL) (NM) (NO) (NP) (NQ) (NR) (NS) (NT) (NU) (NV) (NW) (NX) (NY) (NZ) (OA) (OB) (OC) (OD) (OE) (OF) (OG) (OH) (OI) (OJ) (OK) (OL) (OM) (ON) (OO) (OP) (OQ) (OR) (OS) (OT) (OU) (OV) (OW) (OX) (OY) (OZ) (PA) (PB) (PC) (PD) (PE) (PF) (PG) (PH) (PI) (PJ) (PK) (PL) (PM) (PN) (PO) (PP) (PQ) (PR) (PS) (PT) (PU) (PV) (PW) (PX) (PY) (PZ) (QA) (QB) (QC) (QD) (QE) (QF) (QG) (QH) (QI) (QJ) (QK) (QL) (QM) (QN) (QO) (QP) (QQ) (QR) (QS) (QT) (QU) (QV) (QW) (QX) (QY) (QZ) (RA) (RB) (RC) (RD) (RE) (RF) (RG) (RH) (RI) (RJ) (RK) (RL) (RM) (RN) (RO) (RP) (RQ) (RR) (RS) (RT) (RU) (RV) (RW) (RX) (RY) (RZ) (SA) (SB) (SC) (SD) (SE) (SF) (SG) (SH) (SI) (SJ) (SK) (SL) (SM) (SN) (SO) (SP) (SQ) (SR) (SS) (ST) (SU) (SV) (SW) (SX) (SY) (SZ) (TA) (TB) (TC) (TD) (TE) (TF) (TG) (TH) (TI) (TJ) (TK) (TL) (TM) (TN) (TO) (TP) (TQ) (TR) (TS) (TT) (TU) (TV) (TW) (TX) (TY) (TZ) (UA) (UB) (UC) (UD) (UE) (UF) (UG) (UH) (UI) (UJ) (UK) (UL) (UM) (UN) (UO) (UP) (UQ) (UR) (US) (UT) (UU) (UV) (UW) (UX) (UY) (UZ) (VA) (VB) (VC) (VD) (VE) (VF) (VG) (VH) (VI) (VJ) (VK) (VL) (VM) (VN) (VO) (VP) (VQ) (VR) (VS) (VT) (VU) (VV) (VW) (VX) (VY) (VZ) (WA) (WB) (WC) (WD) (WE) (WF) (WG) (WH) (WI) (WJ) (WK) (WL) (WM) (WN) (WO) (WP) (WQ) (WR) (WS) (WT) (WU) (WV) (WW) (WX) (WY) (WZ) (XA) (XB) (XC) (XD) (XE) (XF) (XG) (XH) (XI) (XJ) (XK) (XL) (XM) (XN) (XO) (XP) (XQ) (XR) (XS) (XT) (XU) (XV) (XW) (XX) (XY) (XZ) (YA) (YB) (YC) (YD) (YE) (YF) (YG) (YH) (YI) (YJ) (YK) (YL) (YM) (YN) (YO) (YP) (YQ) (YR) (YS) (YT) (YU) (YV) (YW) (YX) (YZ) (ZA) (ZB) (ZC) (ZD) (ZE) (ZF) (ZG) (ZH) (ZI) (ZJ) (ZK) (ZL) (ZM) (ZN) (ZO) (ZP) (ZQ) (ZR) (ZS) (ZT) (ZU) (ZV) (ZW) (ZX) (ZY) (ZZ)

Study	Weight, %	OR, CI 95%
Guan	1.30	3.95 (2.15-7.23)
Han	2.20	3.97 (2.48-6.35)
Zeng	4.60	1.37 (0.62-3.00)
Nikpouraghdam	8.10	1.22 (0.69-2.16)
Javanian	2.70	1.89 (0.85-4.23)
Rossi	11.90	1.48 (1.13-1.94)
Borobia	12.00	2.51 (2.14-2.94)
Perez Guzman	9.10	1.44 (0.93-2.21)
Tomlins	1.20	2.91 (1.28-6.62)
Levy	14.60	1.42 (1.28-1.57)
Wang	14.30	1.31 (1.14-1.51)
Cummings	11.90	0.89 (0.57-1.39)
Palaodimos	4.30	1.76 (0.91-3.40)
Bode	1.80	4.63 (2.96-7.26)
Overall	100	1.65 (1.35-1.96)

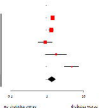
Heterogeneity: $I^2 = 77.4\%$, $p = 0.000$



United States

Study	Weight, %	OR, CI 95%
Levy	50.0	1.75 (1.08-2.82)
Wang	50.0	1.29 (1.18-1.41)
Chen	20.0	0.81 (0.57-1.15)
Polonsky	5.0	1.28 (0.71-2.30)
HMO	5.0	0.81 (0.56-1.16)
Overall	100	1.39 (1.08-1.82)

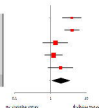
Heterogeneity: $I^2 = 71.7\%$, $p < 0.001$



Asia

Study	Weight, %	OR, CI 95%
Chen	75.0	1.75 (1.70-1.79)
Wang	15.0	1.74 (1.68-1.79)
Levy	7.5	1.23 (0.99-1.52)
Polonsky	8.0	1.23 (0.89-1.70)
Chen	15.0	1.43 (1.26-1.62)
Overall	100	1.72 (1.66-1.78)

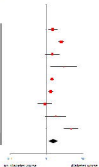
Heterogeneity: $I^2 = 0.0\%$, $p = 0.990$



Europe-United States

Study	Weight, %	OR, CI 95%
Chen	15.0	1.76 (1.33-2.33)
Berthia	15.0	1.73 (1.32-2.27)
Chen	15.0	1.76 (1.32-2.33)
Levy	5.0	1.71 (1.28-2.28)
Wang	10.0	1.23 (1.10-1.37)
Chen	15.0	0.81 (0.67-0.97)
Polonsky	5.0	1.28 (0.71-2.30)
Berthia	5.0	0.81 (0.56-1.16)
Overall	100	1.38 (1.27-1.50)

Heterogeneity: $I^2 = 82.8\%$, $p < 0.000$



Median < 60 years

Study	Weight, %	OR, CI 95%
Chen	75.0	1.75 (1.70-1.79)
Polonsky	15.0	1.23 (0.89-1.70)
Overall	100	1.50 (1.43-1.57)

Heterogeneity: $I^2 = 0.0\%$, $p = 0.990$



Figure 1: A plot of the probability density function (PDF) of the number of successes in a binomial distribution with $n=10$ trials and $p=0.5$ probability of success. The x-axis is labeled "number of successes" and ranges from 0 to 10. The y-axis is labeled "probability density function" and ranges from 0 to 0.1. The plot shows a symmetric distribution centered at 5, with a peak probability of approximately 0.0977. A horizontal line is drawn at $y=0.05$.

