

Characteristics of Ischemic Stroke in COVID-19: A Need for Early Detection and Management

Dinesh V. Jillella, MD¹; Nicholas J. Janocko, MD¹; Fadi Nahab, MD²; Karima Benameur, MD²;

James G. Greene MD, PhD²; Wendy L. Wright MD, JM²; Mahmoud Obideen, MD²; Srikant

Rangaraju MD, MSc¹

¹Department of Neurology, Emory University School of Medicine and Grady Memorial Hospital, Atlanta, GA, USA; dinesh.jillella@emory.edu, njanock@emory.edu, srikant.rangaraju@emory.edu

²Department of Neurology, Emory University School of Medicine, Atlanta, GA, USA

fnahab@emory.edu, karima.benameur@emory.edu, jggreen@emory.edu, wwrigh2@emory.edu, mahmoud.obideen@emory.edu

Title character count: 53

Abstract word count: 247

Manuscript word count: (excluding abstract, references, tables): 1458

Number of references: 13

Number of tables: 1

Number of figures: 1

Grant support/Funding: None

Conflict of interest/Financial Disclosures: None

Keywords: COVID-19, ischemic stroke, reperfusion therapy, cryptogenic stroke, embolic stroke, hypercoagulable state, inflammation.

Corresponding Author:

Dinesh Jillella, MD

49 Jesse Hill Jr. Dr. SE,

Atlanta, GA 30303.

Dinesh.jillella@emory.edu

Abstract

Objective: In the setting of the Coronavirus Disease 2019 (COVID-19) global pandemic caused by SARS-CoV-2, a potential association of this disease with stroke has been suggested. We aimed to describe the characteristics of patients who were admitted with COVID-19 and had an acute ischemic stroke (AIS).

Methods: This is a case series of PCR-confirmed COVID-19 patients with ischemic stroke admitted to an academic health system in metropolitan Atlanta (USA) between March 24th, 2020, and May 5th, 2020. Demographic, clinical, and radiographic characteristics were described.

Results: Of 124 ischemic stroke patients admitted during this study period, 8 (6.5%) were also diagnosed with COVID-19. The mean age of patients was 64.3 ± 6.5 years, 5 (62.5%) male, mean time from last-normal was 4.8 days [SD 4.8], and none received acute reperfusion therapy. All 8 patients had at least one stroke-associated co-morbidity. The predominant pattern of ischemic stroke was embolic; 3 were explained by atrial fibrillation while 5 (62.5%) were cryptogenic. In contrast, cryptogenic strokes were seen in 20 (16.1%) of 124 total stroke admissions during this time.

Conclusions:

In our case series, ischemic stroke affected COVID-19 patients with traditional stroke risk factors with an age of stroke presentation typically seen in non-COVID populations. We observed a predominantly embolic pattern of stroke with a higher than expected rate of cryptogenic strokes and with a prolonged median time to presentation/symptom recognition

limiting the use of acute reperfusion treatments. These results highlight the need for aggressive identification and management of AIS in COVID-19.

Introduction:

The United States has seen an exponential rise in COVID-19 infection cases recently, resulting in over 1.4 million cases and >85,000 deaths. In the setting of the COVID-19 pandemic, there have been reports of its association with various neurological disorders including stroke (1, 2). Stroke has been reported in 5.7 % of patients with severe COVID-19 infections and 0.8 % of patients with non-severe infection in an Asian study (1). Previous studies have reported the role of infectious agents in stroke pathogenesis (3). Based on the underlying hypercoagulability and increased incidence of thrombotic events in severe COVID-19 patients, increased risk of stroke, particularly of embolic etiology, may be predicted. A recent case series of 5 young COVID-19 patients with embolic strokes with few/no traditional risk factors supports this idea (4). However, there are very limited data on the characteristics and frequency of stroke in COVID-19. In this case series from a large academic hospital system in the Southern United States, we report clinical and radiographic characteristics of eight acute ischemic stroke (AIS) patients with COVID-19 infection.

Methods:

Study Design:

This is a retrospective study of adult patients aged 18 years or above admitted to Emory Healthcare hospitals in Atlanta, Georgia, USA with a diagnosis of COVID-19 and identified to have an acute ischemic stroke at initial presentation or during hospital admission. The Institutional Review Board of Emory University approved this retrospective study.

Inclusion and Exclusion Criteria:

Adult patients aged 18 years or above at the time of PCR-confirmed COVID-19 admission from March 24th, 2020 to May 5th, 2020 were included. Diagnosis of acute ischemic stroke based on clinical and radiological confirmation at presentation or during admission was required for inclusion. Patients were excluded if they did not have either clinical or radiological confirmation on review of the patient records.

Study Variables:

We captured demographic variables including age, sex and race. Clinical variables collected include vascular risk factors such as diabetes mellitus (DM), hyperlipidemia, hypertension, congestive heart failure (CHF) and atrial fibrillation; deep vein thrombosis (DVT) or pulmonary embolism (PE); ischemic stroke-specific features like etiology as per TOAST guidelines (5); hemispheric laterality and location of stroke; neurological symptomatology; therapeutic interventions used including intravenous tissue plasminogen activator (iv-tPA) or mechanical thrombectomy (MT); stroke outcome measures including modified Rankin Scale (mRS at discharge), admission to the intensive care unit (ICU) and the duration of ICU stay; non-neurological presenting symptoms and diagnoses; brain imaging and laboratory characteristics in COVID-19 infection and therapies used.

Results:

A total of 124 ischemic stroke patients were admitted during this time-period including 8 (6.5%) who were diagnosed with COVID-19. Mean age was 64 +/- 5.7 years, 5 (62.5%) were male and (62.5%) were Black Americans. History of DM was present in 6 (75%) patients and hypertension was present in 7 (88%) patients and all patients had at least one medical comorbidity (DM,

hypertension, atrial fibrillation, or hyperlipidemia). The predominant pattern of ischemic stroke observed was embolic (8 of 8) and a clear cardio-embolic cause was identified for 3 cases (atrial fibrillation or flutter). Four patients had D-dimer levels of > 3,000 ng/mL with 3 of these having a level > 60,000 ng/mL at admission, and 3 having deep venous thrombosis (DVT) or pulmonary embolism (PE). In comparison to the high rate of embolic pattern cryptogenic (stroke of undetermined etiology per the TOAST criteria) (5) stroke etiology in this case series, 20 (16.1 %) strokes were deemed cryptogenic out of all the non-COVID-19 stroke admissions across all hospitals. Baseline characteristics and clinical and investigational characteristics of these 8 AIS patients with COVID-19 infection are described in Table 1.

Table 1: Clinical and radiographic characteristics of AIS patients with COVID-19

	Patient 1	Patient 2	Patient 3	Patient 4	Patient 5	Patient 6	Patient 7	Patient 8
Demographics:								
Age	50-60	60-70	70-80	50-60	60-70	60-70	60-70	60-70
Sex	Female	Male	Male	Female	Male	Male	Male	Female
Race	Black	Unknown	White	Black	Black	White	Black	Black
Stroke Risk Factors/Associated Medical Conditions:								
Diabetes	Yes	No	No	Yes	Yes	Yes	Yes	Yes
Hypertension	Yes	No	Yes	Yes	Yes	Yes	Yes	Yes
Hyperlipidemia	No	No	Yes	No	No	Yes	Yes	No
Atrial Fibrillation or Flutter	No	Yes	No	No	Yes	No	Yes	No
DVT/PE	Yes	No	No	No	No	Yes	No	Yes

Stroke Characteristics:								
Etiology	Cryptogenic	Cardio-embolic	Cryptogenic	Cryptogenic	Cardio-embolic	Cryptogenic	Cardio-embolic	Cryptogenic
Location Anterior versus Posterior	Anterior	Anterior and Posterior	Anterior	Anterior	Anterior and Posterior	Anterior	Anterior	Anterior
Side	Bilateral	Bilateral	Right	Left	Bilateral	Left	Left	Right
Acute Therapy	No tPA or EVT	No tPA or EVT	No tPA or EVT	No tPA or EVT	No tPA or EVT	No tPA or EVT	No tPA or EVT	No tPA or EVT
Time from COVID-19 manifestations to stroke symptom onset or identification in days	11	6	25	0.75	7	14	2	2
Last known normal in days	11	6	0.5	0.75	2	14	2	2
Primary Neurological Symptoms	Encephalopathy	Coma	Bilateral Hearing Loss	Aphasia, Right-sided Weakness	Bilateral Lower Extremity Weakness	Obtundation	Aphasia, Encephalopathy	Left-sided weakness and Right Gaze Deviation
Cerebral Imaging Figure 1 (A to H)	A) MRI Brain: Small infarctions in the bilateral corona radiata, centrum semiovale, splenium of the corpus callosum, and left	B) CT Head: Infarct in the left parietal lobe and two infarcts in the frontal and occipital lobes Involving the MCA	C) MRI Brain: Right temporal lobe infarction of the insular and sub-insular cortex involving the MCA territory.	D) CT Head: Left frontal lobe infarction involving the ACA territory	E) MRI Brain: Small Infarctions involving the bilateral MCA territories.	F) CT Head: Left paramedian occipital lobe and parietal lobe infarction involving the PCA and MCA territories	G) CT Head: Left temporal and parietal lobe infarction involving the MCA territory	H) CT Head: Right frontal, temporal and parietal lobe infarctions involving the MCA territory

	temporal lobe involving the bilateral MCA territories.	and PCA territories.						
COVID-19 Characteristics:								
Clinical Features:	Hypoxic Respiratory Failure	Respiratory and Cardiogenic Shock	Fatigue	Shortness of Breath, Encephalopathy	Cough, Fever	Hypoxia, Shock, Encephalopathy	Cough, Encephalopathy	Hypoxic Respiratory Failure
COVID-19 Therapy:	Hydroxychloroquine	None	None	Hydroxychloroquine	Remdesivir	None	None	None
General Therapeutics:								
ACE /ARB use	No	No	No	No	Yes	Yes	Yes	No
Laboratory Parameters on initial presentation:								
WBC (10E3/mcL)	9.5	15.1	8.9	8.4	9.3	17.9	3.5	19.1
Platelet count (10E3/mcL)	318	302	255	291	409	337	156	466
CRP (mg/L)	182	27.5	3.3	236.4	126.1	104.2	59	72.9
Ferritin (ng/ml)	549	NA	433	NA	NA	NA	571	15
Fibrinogen (mg/dl)	861	571	NA	NA	580	NA	NA	765

D-Dimer (ng/ml)	1934	4724	781	> 60,000	2119	> 60,000	833	> 60,000
INR	1.12	1.2	1.12	1.34	1.62	1.3	1.24	1.33
LDL (mg/dl)	46	UTC	NA	121	22	78	33	55
Triglycerides (mg/dl)	87	301	NA	178	59	94	46	232
HgA1c (%)	11.3	6.1	NA	8.6	6.4	5.5	12.1	6.6
Outcomes:								
mRS on Admission	0	0	1	0	3	3	1	0
mRS at Discharge*	3	6	1	3	4	5	2	6
ICU Admission	Yes	Yes	No	Yes	Yes	Yes	No	Yes
ICU LOS (days)	21	12	-	5	1	9	-	11

Legend:

DVT/PE – Deep venous thrombosis/Pulmonary Embolus; ivtPA – intravenous tissue plasminogen activator; MT – Mechanical thrombectomy; MRI – Magnetic Resonance Imaging; CT – Computed Tomography; ACA – Anterior Cerebral Artery; MCA – Middle Cerebral Artery; PCA – Posterior Cerebral Artery; ACE/ARB – Angiotensin-Converting Enzyme/Angiotensin Receptor Blocker; WBC – White blood count; CRP: C-reactive protein, INR- International Normalized Ratio, LDL- Low-density Lipoprotein; UTC = unable to be calculated; MRS – Modified Rankin Scale; ICU – Intensive Care Unit; NA = Not available, LOS – length of stay;

*Most recent MRS if the patient was still admitted at the time of chart review.

FIGURE 1:

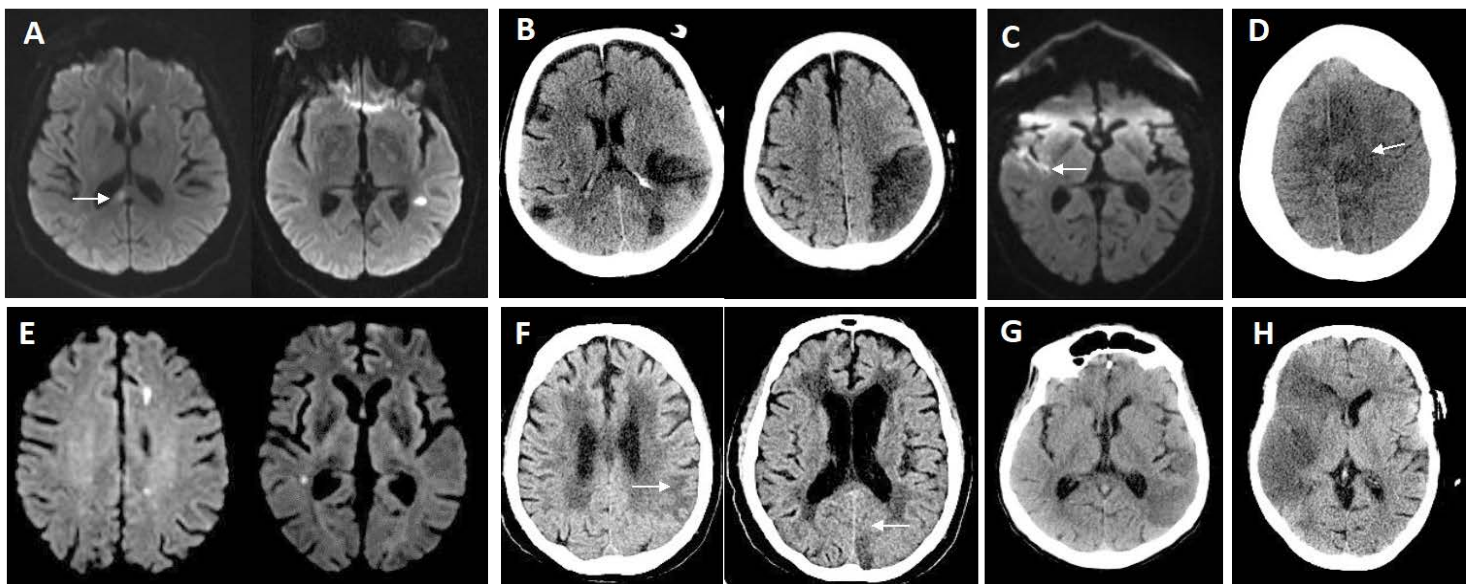


Figure 1. Imaging characteristics of ischemic stroke in COVID-19 patients

1A: MRI of the brain showing areas of infarction in the right corpus callosum and left temporal lobe on the diffusion-weighted sequence.

1B: CT brain showing hypodensities in the bilateral middle cerebral artery territories.

1C: MRI brain showing a right-sided temporal lobe infarction on the diffusion-weighted sequence.

1D: CT head showing hypodensity in the left anterior cerebral artery territory.

1E: MRI brain showing areas of infarction in the left frontal and right temporal lobes on the diffusion-weighted sequence.

1F: CT head showing hypodensities correlating with infarctions in the left parietal and occipital lobes.

1G: CT head showing a hypodensity in the left temporal lobe

1H: CT head showing a large infarction in the right middle cerebral artery territory.

Discussion:

COVID-19 infection caused by the SARS-CoV2 virus is associated with multi-system dysfunction including neurological involvement, systemic inflammation, and hypercoagulability. Neurological involvement with stroke as a manifestation was reported in 2.8 % (6) of patients with COVID-19 based on an Asian study of 214 patients. Ischemic stroke constituted a majority of these patients with 5 of the 6 having a diagnosis of ischemic stroke (1).

Infectious pathogens have been described to contribute to stroke causation via various mechanisms including accelerated atherosclerosis, vasculitis, vasculopathy, and coagulopathy

(3). Coagulopathy/hypercoagulable state specifically has been postulated to be one of the important mechanisms of COVID-19's clinical effects (6, 7). Its possible effect on stroke causation is still unclear although some recent case reports in young patients with few/no comorbid risk factors potentially point towards an association (4). In our study, COVID-19 patients with AIS constituted 6.5% of the ischemic stroke admissions in our healthcare system. All the patients had an embolic pattern stroke noted on imaging and without a clear source of the embolism identified in 5 of the 8 (62.5%) meeting the criteria for cryptogenic strokes that contribute to 10-30% of all stroke cases and lower in centers with advanced testing capabilities (8). Cryptogenic strokes overall constituted 16.1 % at all our stroke centers, considerably lower than that observed in our case series. 3 patients (none of whom had a diagnosis of atrial fibrillation or flutter) also had DVT or PE. Of these 3, 2 patients had D-dimer elevations > 60,000 ng/ml. Based on this information, COVID-19 associated hypercoagulable state stemming from the pro-inflammatory processes (6, 7) could be hypothesized as a possible contributory mechanism for the higher prevalence of embolic cryptogenic stroke presentations in our series, although further studies are needed to confirm this finding considering the limitations of our retrospective case series.

One patient had a prior diagnosis of atrial fibrillation while two had new diagnoses of atrial fibrillation/flutter during this admission that could be causal in the stroke etiologies in these three patients. Active infectious processes triggering atrial fibrillation events have been described (9) and increasing reports suggest a cardiac involvement with COVID-19 infections (10, 11). Of note, none of the cardiac arrhythmias were observed in patients who received hydroxychloroquine.

All except one patient in our study had a diagnosis of either DM or hypertension (most having both), and the one patient who did not have a prior diagnosis of DM, was found to be pre-diabetic on testing. Although these could be argued as potential confounders from a stroke etiologic standpoint, the presence of these comorbid conditions has been associated with a higher risk of having a COVID-19 infection, and with greater disease severity (12). In this setting, it needs to be ascertained if the presence of hypertension, DM and related upregulation of the ACE2 could contribute to an increased risk of stroke in these patients. In our study, we observed that the average age of COVID-19 stroke presentation is in line with the nation-wide stroke average age of ~ 70.

Acute ischemic stroke therapy has greatly evolved over the last two decades with excellent clinical outcomes reported in recent years with reperfusion strategies of ivtPA and MT. Unfortunately, none of the AIS patients in our series received reperfusion therapy and with primary reasons being either delayed presentation or recognition of atypical stroke symptoms. The diverse constellation of neurological symptoms ranging from encephalopathy to being comatose to having bilateral weakness and atypical bilateral hearing loss rather than the typical findings of cortical involvement or focal motor manifestations along with severe systemic dysfunction compromising the clarity of neurological manifestations can be presumed to be contributory in this delayed stroke recognition. COVID-19 patients with cardio-pulmonary dysfunction are also generally intubated with paralytics and sedatives on board, along with strict isolation measures that could potentially cause delays in stroke recognition. There need to be protocols in place ensuring sedation holidays that can help counter this issue along with more

frequent clinical monitoring. Delayed presentations could be a result of patients waiting longer due to self-isolation or quarantine precautions that have led to a general decline in acute stroke evaluations across the country (13). This highlights the need to increase community awareness regarding stroke symptoms and the need to ensure rapid evaluation in the ED to facilitate early stroke treatments and limit disability.

Limitations:

This is a retrospective case series that is limited by the small number of cases and hence, the results are mainly observational and causal association of COVID-19 infection with AIS cannot be ascertained.

Conclusion:

In our case series, ischemic stroke affected COVID-19 patients at an age of stroke presentation typically seen in non-COVID populations. We observed a predominantly embolic pattern of stroke with a higher than expected rate of cryptogenic strokes and with a prolonged median time to presentation/symptom recognition limiting the utilization of acute reperfusion therapy. These results highlight the need for aggressive identification and management of AIS in COVID-19 patients along with increased community awareness on stroke symptomatology. Further studies to determine the effects of COVID-19 associated coagulopathy on ischemic stroke risk as well as the interactions between COVID-19 and other known stroke risk factors are warranted.

References:

1. Mao L, Jin H, Wang M, Hu Y, Chen S, He Q, et al. Neurologic Manifestations of Hospitalized Patients With Coronavirus Disease 2019 in Wuhan, China. *JAMA Neurol.* 2020. Epub 2020/04/11. doi: 10.1001/jamaneurol.2020.1127. PubMed PMID: 32275288; PubMed Central PMCID: PMCPMC7149362.
2. Avula A, Nalleballe K, Narula N, Sapozhnikov S, Dandu V, Toom S, et al. COVID-19 presenting as stroke. *Brain Behav Immun.* 2020. Epub 2020/05/04. doi: 10.1016/j.bbi.2020.04.077. PubMed PMID: 32360439; PubMed Central PMCID: PMCPMC7187846.
3. Jillella DV, Wisco DR. Infectious causes of stroke. *Curr Opin Infect Dis.* 2019;32(3):285-92. Epub 2019/04/12. doi: 10.1097/QCO.0000000000000547. PubMed PMID: 30973394.
4. T.J. Oxley JM, S. Majidi, C.P. Kellner, H. Shoirah, I.P. Singh, et al. Large-vessel stroke as a presenting feature of Covid-19 in the young *N Engl J Med* (2020).
5. Adams HP, Jr., Bendixen BH, Kappelle LJ, Biller J, Love BB, Gordon DL, et al. Classification of subtype of acute ischemic stroke. Definitions for use in a multicenter clinical trial. TOAST. Trial of Org 10172 in Acute Stroke Treatment. *Stroke.* 1993;24(1):35-41. Epub 1993/01/01. doi: 10.1161/01.str.24.1.35. PubMed PMID: 7678184.
6. Spiezia L, Boscolo A, Poletto F, Cerruti L, Tiberio I, Campello E, et al. COVID-19-Related Severe Hypercoagulability in Patients Admitted to Intensive Care Unit for Acute Respiratory Failure. *Thromb Haemost.* 2020. Epub 2020/04/22. doi: 10.1055/s-0040-1710018. PubMed PMID: 32316063.
7. Panigada M, Bottino N, Tagliabue P, Grasselli G, Novembrino C, Chantarangkul V, et al. Hypercoagulability of COVID-19 patients in Intensive Care Unit. A Report of Thromboelastography Findings and other Parameters of Hemostasis. *J Thromb Haemost.* 2020. Epub 2020/04/18. doi: 10.1111/jth.14850. PubMed PMID: 32302438.
8. Saver JL. CLINICAL PRACTICE. Cryptogenic Stroke. *N Engl J Med.* 2016;374(21):2065-74. Epub 2016/05/26. doi: 10.1056/NEJMcpl503946. PubMed PMID: 27223148.
9. Kuipers S, Klein Klouwenberg PM, Cremer OL. Incidence, risk factors and outcomes of new-onset atrial fibrillation in patients with sepsis: a systematic review. *Crit Care.* 2014;18(6):688. Epub 2014/12/17. doi: 10.1186/s13054-014-0688-5. PubMed PMID: 25498795; PubMed Central PMCID: PMCPMC4296551.
10. Seecheran R, Narayansingh R, Giddings S, Rampaul M, Furlonge K, Abdool K, et al. Atrial Arrhythmias in a Patient Presenting With Coronavirus Disease-2019 (COVID-19) Infection. *J Investig Med High Impact Case Rep.* 2020;8:2324709620925571. Epub 2020/05/07. doi: 10.1177/2324709620925571. PubMed PMID: 32370558.
11. Li B, Yang J, Zhao F, Zhi L, Wang X, Liu L, et al. Prevalence and impact of cardiovascular metabolic diseases on COVID-19 in China. *Clin Res Cardiol.* 2020;109(5):531-8. Epub 2020/03/13. doi: 10.1007/s00392-020-01626-9. PubMed PMID: 32161990; PubMed Central PMCID: PMCPMC7087935.
12. Fang L, Karakiulakis G, Roth M. Are patients with hypertension and diabetes mellitus at increased risk for COVID-19 infection? *The Lancet Respiratory Medicine.* 2020;8(4). doi: 10.1016/s2213-2600(20)30116-8.

13. Kansagra AP, Goyal MS, Hamilton S, Albers GW. Collateral Effect of Covid-19 on Stroke Evaluation in the United States. N Engl J Med. 2020. Epub 2020/05/10. doi: 10.1056/NEJMc2014816. PubMed PMID: 32383831.