

1 **Impact of gastrointestinal comorbidities in patients with right & left atrial isomerism**

2

3 Anastasia Fotaki MD^(1,2), Victoria L Doughty BSc, PhD⁽¹⁾, Winston Banya⁽³⁾, Stefano Giuliani MD,
4 PhD, FRCS⁽⁴⁾, Sarah Bradley⁽⁵⁾, Julene S Carvalho MD, PhD, FRCPC^(1,2,6)

5 ⁽¹⁾ Brompton Centre for Fetal Cardiology, Royal Brompton & Harefield NHS Foundation Trust,
6 Royal Brompton Hospital, Sydney Street, London SW3 6NP

7 ⁽²⁾ Fetal Medicine Unit, St. George's University Hospitals NHS Foundation Trust, St George's
8 Hospital, Blackshaw Road, London SW17 0QT

9 ⁽³⁾ Department of Medical Statistics, Research & Development, Royal Brompton & Harefield NHS
10 Foundation Trust, Sydney Street, London SW3 6NP

11 ⁽⁴⁾ Department of Neonatal & Paediatric Surgery, St. George's University Hospitals NHS
12 Foundation Trust, Blackshaw Road, London SW17 0QT

13 ⁽⁵⁾ Department of Neonatal Unit, St. George's University Hospitals NHS Foundation Trust,
14 Blackshaw Road, London SW17 0QT

15 ⁽⁶⁾ Molecular & Clinical Sciences Research Institute, St George's University of London, Cranmer
16 Terrace, London SW17 0RE

17 **Correspondence:**

18 Anastasia Fotaki,

19 Brompton Centre for Fetal Cardiology, Royal Brompton Hospital, Sydney Street,

20 London SW3 6NP

21 Tel: (00) (44) (20) 7351 8361

22 e-mail: anfotaki@hotmail.com

23 **Total Word Count: 2,581**

24 **Keywords:** heart defects; congenital; prenatal diagnosis; fetal; echocardiography

25

1 **ABSTRACT**

2 **Objective:** Heterotaxy syndrome (HS), being right atrial isomerism (RAI) or left atrial
3 isomerism (LAI) often presents with congenital heart disease (CHD). Intestinal
4 abnormalities including malrotation are common. We aim to assess the impact of gut
5 abnormalities on outcome in HS.

6 **Methods:** We reviewed cardiology records of HS patients regarding presence of CHD, time
7 for cardiac intervention, presence of gastrointestinal (GI) abnormalities and type/time of
8 surgery. A questionnaire about GI status was sent to patients <18 years old. Kaplan-Meier
9 curves were derived for survival data.

10 **Results:** Data were available for 195 patients (49 RAI, 146 LAI) of 247 identified.
11 Questionnaires were sent to 77 families, 47 replied. CHD was present in all RAI and
12 63.7% of LAI cases. Thirty-eight patients had abdominal surgery (19.5%), similar rate in
13 RAI and LAI (20.4% vs 19.1%, $p=0.92$). Ladd procedure was performed in 17 (44.7%),
14 non-Ladd in 12 (31.5%) and both procedures in nine patients (23.7%). Ten-year freedom
15 from Ladd procedure for all was 86% (RAI=87%; LAI=85%, $p=0.82$). Freedom from any
16 GI surgery at one year was 86% (RAI=86%; LAI=86%, $p=0.98$) and at ten years was 80%
17 (RAI=77%; LAI=81%, $p=0.65$). Ten-year freedom from cardiac surgery was 34%
18 (RAI=7%; LAI=42%, $p<0.0001$).

19 **Conclusions:** In our cohort, one in five patients required abdominal surgery, mostly in
20 their first year, similar in RAI and LAI. Between one and ten years of follow up the impact
21 of GI abnormalities on outcome was minimal. Medium term survival was related to CHD.

22

23 **Keywords:** heart defects; congenital; prenatal diagnosis; fetal; echocardiography

24

25

1 **ARTICLE SUMMARY**

2 **STRENGTHS AND LIMITATIONS OF THIS STUDY**

- 3 • This study is the largest cohort study investigating the impact of gastrointestinal
4 abnormalities in cardiology patients with heterotaxy syndrome.
- 5 • It is the first clinical study to show that HS patients suffer from a wider spectrum of
6 abdominal abnormalities, other than typical malrotation, varying in severity from
7 asymptomatic malrotation to complete non-rotation, namely atresia at multiple
8 intestinal levels. This is relevant in prenatal family counseling but also raises questions
9 regarding the indication of elective Ladd procedure in all heterotaxy syndrome patients,
10 as a different procedure might be indicated.
- 11 • Patient morbidity was investigated from both the cardiology and gastrointestinal point
12 of view.
- 13 • Its main limitations in design is that is not a prospective study. Cardiology records have
14 been reviewed with regards to GI symptomatology, screening investigations and
15 procedures.
- 16 • It involved both reviewing the medical records and directly contacting the family for the
17 subcohort that was below 18 years old and lived in the UK, in an attempt to minimise
18 any data errors. Our records were consistent with the information provided by
19 parents/guardians in all cases but one.

1 INTRODUCTION

2 Heterotaxy syndrome (HS) refers to the abnormal arrangement of organs along the left-right
3 axis that is neither situs solitus nor inversus.^{1, 2} Birth incidence is reported as 1:10,000.^{3, 4} HS
4 can be further divided in two diagnostic categories: right atrial isomerism (RAI) and left atrial
5 isomerism (LAI). In LAI there is dominance of left-sided structures, typically associated with
6 multiple spleens (polysplenia), bilateral bilobed lungs, bilateral hyparterial bronchi and two
7 morphological left atria. The inferior vena cava is interrupted with azygos continuation to the
8 superior vena cava (SVC). In right atrial isomerism (RAI), there is dominance of right-sided
9 structures with bilateral trilobed lungs, bilateral eparterial bronchi and two morphological right
10 atria. Asplenia is common and often there are bilateral SVCs.⁵ The cardiac development in
11 heterotaxy is often abnormal and leads to a wide spectrum of cardiac defects. Congenital heart
12 disease (CHD) is common in both LAI and RAI and often more complex in RAI.

13 HS is often associated with abnormal rotation and fixation of the intestine, termed malrotation.
14 Gut malrotation is thought to occur in 40-90% of patients with HS.⁶⁻¹¹ The Ladd procedure is the
15 surgical treatment for malrotation with midgut volvulus. Briefly, it consists of de-rotation of the
16 twisted small bowel.¹² However, no consensus exists regarding whether HS patients should be
17 electively screened for malrotation. It is unclear whether elective, prophylactic Ladd procedure
18 is indicated for asymptomatic patients, especially as their complex cardiac anatomy and
19 cardiorespiratory physiology, predisposes them to adverse effects during the perioperative
20 period. However, improved medical care for children with CHD and HS has increased clinicians'
21 interest in intestinal comorbidities associated with HS. Additionally, with advances in prenatal
22 screening,¹³ more children with HS and less severe cardiac abnormalities or with a functionally
23 normal heart are being identified before birth. In the latter groups without or with less severe
24 cardiac defects, it is particularly important to know how much the presence of gut abnormalities
25 leading to symptoms and/or surgery can impact on morbidity and mortality in children with HS.

1 The objective of this research project is to ascertain the impact of gut abnormalities in children
2 with HS to help guide management in the current era of better survival from cardiac surgery
3 and improved prenatal screening.

4

5 **METHODS**

6 This is a retrospective study of patients with known RAI or LAI, identified from paediatric and
7 fetal cardiac databases in our tertiary institutions, Royal Brompton Hospital and St George's
8 University Hospital. All available medical records were reviewed retrospectively regarding the
9 presence and type of abdominal symptoms, screening examinations undertaken, surgical
10 interventions and documentation of any related major complications. Information regarding
11 presence of CHD, need and time for cardiac surgery was also recorded. Outcome (alive or dead)
12 at the time of data review was noted and all live patients under the age of 18 years living in the
13 UK were identified. A letter was posted to the parents of the patients in this group inviting them
14 to complete a questionnaire (Supplementary material 1 and 2) regarding their child's
15 abdominal symptoms, date and time of any screening test for abdominal problems, date and
16 type of any abdominal surgery and known complications following surgery. Two different
17 questionnaires were designed, which reflected if the child was known to have undergone
18 previous abdominal surgery (Supplementary material 1) or not (Supplementary material 2),
19 based on their medical records.

20 The study was approved by the National Research Ethics Committee (Reference: 15-SC-0504).
21 The need for informed consent for retrospective review of data was waived, but consent was
22 obtained from those contacted by post.

23 **Patient and public involvement statement**

1 During prenatal counseling of parents with fetuses with HS, questions about extracardiac
2 comorbidities arose frequently. Especially for the fetuses with LAI and minor heart defects, it
3 was hard to advise on the extracardiac manifestations. Review of the recent literature had a
4 significant gap in the analysis of paediatric cardiology records with regards to GI disease, and
5 thus we undertook this study.

6 Patients were not involved in the recruitment of the study. However for a subgroup of patients
7 that were alive and below 18, a questionnaire with the study research questions, was posted to
8 their parents. A majority of those answered the questionnaire and reported interest to be
9 informed on the results of the study. This is facilitated by post again.

10 *Statistical analysis*

11 Categorical data are presented as number (n, %) and comparisons between groups are made
12 using the chi-squared or Fisher's exact test. Numeric data are presented as median (inter-
13 quartile range, IQR).

14 Kaplan-Meier survival curves were plotted to assess freedom from cardiac intervention, any GI
15 surgery and Ladd surgery for the whole cohort and for RAI versus LAI patients. The Logrank
16 test was used to assess difference in freedom from intervention between these two groups. All
17 tests were two-sided and significance was set at $p < 0.05$. The analysis was done using STATA
18 version 14.1.

19

20 **RESULTS**

21 A total of 247 patients with the diagnosis of RAI or LAI were identified. Of these, 195 patients
22 were included in this study and constitute our cohort, 52 were excluded from the study due to

1 insufficient information in medical notes (n = 45) or the diagnosis of isomerism was unclear (n
 2 = 7). The oldest patient was born in 1947 and the youngest in 2015.

3 Letters and appropriate questionnaires were posted to patients that were alive and under 18
 4 years old living in the UK (n= 77). Families' replies (n=45, 58%) were in agreement with the
 5 information obtained from the medical notes, in all but one. In this case, the child had had
 6 surgery for duodenal atresia and malrotation, which was not reported in the medical notes

7 Of the 195 cases, 146 patients had LAI (74.9%) and 49 had RAI (25.1%). All cases diagnosed
 8 with RAI had CHD, compared to 63.7% of cases with LAI (Table 1). Kaplan-Meier curves
 9 indicating time to first cardiac intervention in the whole cohort and comparing those with RAI
 10 and LAI are shown in Figures 1a and 1b.

11 **Table 1: Demographic data and information related to heterotaxy, gastrointestinal**
 12 **symptoms, investigations and surgery.**

Variable	Overall number of patients	Right isomerism (RAI)	Left isomerism (LAI)	RAI versus LAI (p-value)
Number of patients	195	49	146	
Male, n (%)	85 (43.6 %)	27 (55.1%)	58 (39.1%)	0.20
Patients diagnosed with CHD, n (%)	142 (72.8%)	49 (100%)	93 (63.7%)	< 0.0001
Patients requiring cardiac intervention in neonatal period, n (%)	40 (20.5%)	18 (36.7%)	22 (15.0%)	0.017
Patients requiring cardiac interventions in infancy	37 (19.0%)	9 (18.4%)	28 (19.2%)	0.92

(excluding neonatal period), n (%)				
GI symptoms, n (%)	44 (22.5%)	12 (24.5%)	32 (21.9%)	0.77
Elective screening - not requiring surgery, n (%)	26/42 (61.9%)	3/9 (33.3%)	23/33 (69.7%)	0.15
GI surgery, n (%)	38 (19.5%)	10 (20.4%)	28 (19.7%)	0.89
Ladd surgery, n (%)	26 (13.3%)	6 (12.2%)	20 (13.7%)	0.84
Non-Ladd surgery, n (%)	12 (6.2%)	4 (8.2%)	8 (5.5 %)	0.54

1

2 Abbreviations: CHD: congenital heart disease; CI: confidence interval; GI: gastrointestinal; LAI:
3 left atrial isomerism; n: number; RAI: right atrial isomerism.

4 *GI symptoms*

5 Abdominal symptoms were recorded in nearly one-quarter of patients (44/195, 22.5%). In the
6 majority (29/44, 65.9%), symptoms developed during the first year of life. Four cases of
7 duodenal atresia were diagnosed prenatally and for all diagnosis was postnatally confirmed.

8 *GI investigations*

9 Abdominal investigations to rule out rotational abnormalities were carried out in 42 of 195
10 (21.5%; 95% CI = 16.0-27.8%) patients. Twenty-two symptomatic patients were investigated.
11 12 had malrotation, but in two cases, surgery was not performed as patients died due to
12 associated CHD. In eight patients, malrotation was excluded, however two did have surgery due
13 to persistent symptoms. Two additional patients had surgery, but the results of the
14 investigations were not recorded.

15 Of the 20 asymptomatic patients that were investigated, none was found to have malrotation.

1 *Surgery (GI)*

2 From our total cohort, 38 patients (19.4%) had abdominal surgery (Table 1), 33 were
 3 symptomatic. Of the 38 cases: 17 (44.7%) underwent the Ladd procedure only; nine (23.7%)
 4 had both Ladd and non-Ladd abdominal surgeries and 12 (31.5%) had non-Ladd surgery (Table
 5 2). In the 49 patients with RAI, 10 (20.4%) had abdominal surgery. This was also required in 28
 6 of the 144 with LAI (19.4%) (Table 1 and 2).

7 A total of 27 non-Ladd surgical procedures were performed in 21 patients. Nine patients had
 8 duodenal or intestinal atresia, six required gastrostomy insertion or gastropexy, six had
 9 Nissen’s fundoplication and four procedures were performed to treat biliary atresia and
 10 gallbladder pathology.

11 **Table 2: Data regarding detailed description of the abdominal surgeries performed in right**
 12 **and left isomerism patients.**

Case - Patient Identification	Isomerism diagnosis	Ladd procedure	Non-Ladd GI surgery
1 - 18	LAI	+	-
2- 21	LAI	+	-
3 - 22	LAI	-	Duodenal atresia
4 - 23	LAI	+	-
5 - 26	RAI	+	-
6 - 32	LAI	-	Dilated tense gallbladder (Cholelithiasis)
7- 38	LAI	+	1. Oesophageal atresia & tracheoesophageal fistula 2. Dilatation of oesophageal stricture 3. Ligation of tracheoesophageal

			fistula & primary anastomosis 4. Gastrostomy & Nissens fundoplication
8 - 41	LAI	+	Blood clot removal
9 - 49	LAI	+	-
10 - 51	RAI	+	1. Nissens fundoplication 2. Inguinal hernia
11 - 52	RAI	+	Gastrostomy insertion
12 - 66	LAI	+	Biliary atresia
13 - 67	LAI	-	Nissens fundoplication
14 - 72	RAI	-	1. Nissens fundoplication 2. Redo Nissens fundoplication & gastrostomy
15 - 81	LAI	-	PEG insertion
16 - 88	LAI	-	Gastrostomy
17 - 90	RAI	-	Nissens fundoplication & PEG insertion
18 - 97	LAI	+	-
19 - 103	LAI	+	-
20 - 107	LAI	+	-
21 - 108	LAI	+	-
22 - 116	LAI	+	-
23 - 119	LAI	-	Duodenal atresia
24 - 120	RAI	-	1. Duodenal atresia 2. Gastrostomy & jejunostomy
25 - 122	RAI	+	-

26 - 128	LAI	-	Intestinal atresia
27 - 130	LAI	+	Jejunostomy
28 - 131	RAI	+	-
29 - 136	RAI	+	Jejunostomy
30 - 143	RAI	-	Biliary atresia
31 - 145	LAI	+	-
32 - 150	LAI	+	-
33 - 157	LAI	+	Nissens fundoplication
34 - 158	LAI	+	-
35 - 182	LAI	+	-
36 - 185	LAI	+	-
37 - 188	LAI	+	Duodenal atresia & biliary atresia
38 - 195	LAI	-	Duodenal atresia

1

2 Abbreviations: GI: gastrointestinal; LAI: left atrial isomerism; PEG: percutaneous endoscopic
3 gastrostomy; RAI: right atrial isomerism; +: yes; -: no

4 *Follow up and outcome (KM survival curves)*

5 Of the initial cohort, 161 patients were alive. The median follow-up time is 10.2 years (IQR = 3.1
6 - 25.8). The median survival for patients without the need for cardiac intervention was 2.9
7 years, (IQR = 0.25 - 20.3). Figures 1a and 1b are Kaplan-Meier curves, showing freedom from
8 cardiac intervention for the whole cohort and comparison between RAI and LAI, respectively.
9 Ten-year freedom from cardiac surgery was 34% (95% CI = 27-42%) for the whole cohort, 7%
10 (95% CI = 1-21%) for RAI and 42% for LAI (95% CI = 33- 51%), $p < 0.0001$.

11 Figures 2a and 2b represent Kaplan-Meier curves for freedom from any GI surgery for the whole
12 cohort and comparison of RAI and LAI cohorts, respectively. Freedom from any GI surgery for

1 the whole cohort at 1 year was 86% (95% CI = 80-91%), for RAI 86% (95% CI = 71-93%) and
2 for LAI 86% (95% CI = 79-91%), $p=0.98$. Freedom at 10 years was 80% (95% CI = 75-85%) for
3 all patients, 77% (95% CI = 59-87%) and 81% (95% CI = 73-86%) for RAI and LAI respectively,
4 $p = 0.65$.

5 Figures 3a and 3b show freedom from Ladd procedure for the whole HS population and
6 comparison of RAI and LAI cohorts, respectively. Overall freedom from Ladd procedure at 20
7 years was 86% (95% CI = 79-90%), for RAI 87% (95% CI = 72-94%) and LAI 85% (95% CI =
8 78-91%), $p = 0.82$.

9

10 **DISCUSSION**

11 Abnormalities in intestinal rotation and fixation are well known to occur in conjunction with
12 disordered cardiac looping found in heterotaxy. Establishing laterality during gastrulation at the
13 beginning of the third week of development is essential for normal heart and gut development,
14 because it specifies cells contributing to and patterning the right and left side of the heart and
15 the rotation and fixation of the gut.^{16, 17} Typical malrotation refers to a spectrum of abnormal
16 rotation of the bowel around the superior mesenteric vessels causing the small bowel to be
17 prone to twist leading to midgut volvulus.

18 In our cohort of patients with RAI and LAI with a median follow up time of 10 years most
19 patients required cardiac intervention and approximately 20% required GI surgery (Ladd
20 procedure for classic malrotation in about two-thirds, non-Ladd interventions in about half of
21 the cases, including intestinal atresia in 43%). There was no significant difference between the
22 RAI and LAI cohorts with regards to GI comorbidity. Freedom from any GI surgery at 10 years
23 was 80% and did not result in further GI comorbidities, reflecting low impact on cardiac
24 outcome.

1 In our series, most patients had no GI related symptoms. Of the symptomatic group about two-
2 thirds developed symptoms within the first year of life. In the literature, up to 40% of patients
3 with malrotation present within the first week of life and up to 75% to 85% have been
4 diagnosed by age 1 year. The diagnosis of the remaining 15% to 25% of patients is usually
5 made during childhood but can be into late adulthood. However, it is difficult to estimate the
6 true incidence of malrotation in the adult population.^{4, 8, 14, 15} In our series, patients requiring
7 Ladd procedure were mostly symptomatic (25/26).

8 The incidence of non-Ladd abdominal surgery in our cohort is probably also an indication that
9 disordered looping in intestines comprises a wider spectrum of functional abnormalities than
10 typical malrotation.

11 In our series, there was no patient presenting with acute mid-gut volvulus. This is in agreement
12 with a review by Elder and colleagues.¹⁸ In their series, which included 99 HS patients, 23 had
13 Ladd's procedure, only one presented with acute abdomen, but no volvulus was found at
14 surgery. Of the remaining 76 patients who did not undergo a Ladd procedure, 14 had normal
15 intestinal anatomy, 5 had malrotation, and 57 were never evaluated for intestinal malrotation.
16 Average follow-up time was 5.1 years. It is concluded that HS patients who did not have
17 screening and prophylactic surgery were not exposed to a significant risk of midgut volvulus¹⁸.

18 The management GI strategy for the asymptomatic HS patient has been the subject of academic
19 debate in the literature over the past decade.^{5, 19, 20} Advances in cardiac care result in HS patients
20 reaching cardiac stability¹⁹ with asymptomatic intestinal rotation.²¹

21 There is no agreement concerning screening for malrotation in HS patients.⁵ Papillon and
22 colleagues doubt the true clinical significance of the findings of malrotation in the upper GI tract
23 contrast study in an asymptomatic HS patient.²² In a recent series, they noted that of 30
24 asymptomatic patients with investigation findings of duodeno-jejunal malposition - atypical
25 malrotation, none of them had true malrotation or a narrow mesentery at the time of abdominal

1 exploration.^{22, 23} They also observed 138 asymptomatic patients without imaging and none
2 developed volvulus. ^{11,22} White et al found that the presence of malrotation does not impact the
3 outcomes following cardiac surgery for patients with complex CHD. The incidence of volvulus in
4 this group is also low and therefore does not advocate for a prophylactic Ladd procedure.²⁴

5 The concerns regarding Ladd procedure itself are related to the predisposition for post-
6 operative complications, particularly small bowel obstruction with rates ranging from 3-15%²⁵
7 and controversy exists regarding possible higher morbidity when performed in asymptomatic
8 HS patients versus (vs) the symptomatic ones (22% vs 13%).¹² However, the risk of not
9 operating on an asymptomatic abnormality of intestinal rotation is the morbidity associated
10 with potential midgut volvulus and an emergency abdominal surgery.

11 Yu and colleagues in a retrospective review support prophylactic Ladd procedure in all
12 asymptomatic HS patients with suspected malrotation,⁵ as they encounter similar rates of
13 complications and hospital stay after Ladd procedure between HS and non-HS patients with
14 presumed malrotation. A similar argument supporting prophylactic Ladd procedure has been
15 published by other groups^{10, 11, 25}

16 An alternate opinion has been presented by Choi and colleagues who studied 177 HS patients,
17 152 were asymptomatic and nine had screening, six with abnormal results.²⁶ A total of 143 were
18 followed-up, only four developed symptoms and only one developed malrotation requiring
19 Ladd procedure. The incidence of volvulus was 0.6%, lower than the rates of small bowel
20 obstruction published elsewhere and none needed bowel resection. Another retrospective study
21 of over 300 patients with HS and intestinal rotation abnormalities from 41 tertiary children's
22 hospitals found that Ladd procedure was associated with a 120% increase in the odds of major
23 morbidity and mortality, even after considering various risk factors.⁴ Therefore, close
24 observation, might reduce the odds of future complications in this patients group.⁴ Equivalent
25 postoperative outcome has been shown between prophylactic and emergent Ladd procedures,

1 and complications occurred more frequently in patients who had a Ladd procedure rather than
2 in patients who were observed, suggesting non-operative management as a reasonable
3 alternative to prophylactic surgery.²⁸ In a recent systematic review another group concludes
4 that given the spectrum of intestinal rotation abnormalities, ranging from absence of normal
5 rotation, which is relatively benign, to severe malrotation that carries higher risk of obstruction
6 and midgut volvulus and associated cardiac comorbidity, asymptomatic patients should be
7 deferred from an unnecessary Ladd procedure.²⁹ This view is supported by others.^{4, 14, 26, 27, 30}

8 In our study group, there were no major GI surgical complications, but no patient was treated
9 prophylactically. None of our patients required emergency Ladd procedure because they did not
10 present with acute midgut volvulus.

11 Limitations of our study include the retrospective review of the pediatric cardiology notes,
12 particularly due to occasional brief reports on abdominal symptomatology and complications
13 after GI procedures. We tried to overcome this limitation, by including relevant questions on the
14 symptomatology and on the surgical complications in the questionnaires we sent to parents. For
15 patients who died from CHD in the neonatal period, autopsy findings to confirm or not the
16 presence of malrotation are not available. A larger, prospective series is needed to determine if
17 these theories hold true.

18 Conclusions: In our cohort, one in five patients required abdominal surgery, the majority in
19 their first year, similar in RAI and LAI. Between one and ten years of follow up the impact of GI
20 abnormalities on outcome was minimal. Medium term survival was related to CHD.

21

1 **Abbreviations:** CHD: congenital heart disease; CI: confidence interval; GI: gastrointestinal; HS:
2 heterotaxy syndrome; IQR: inter-quartile range; LAI: left atrial isomerism; n: number; PEG:
3 percutaneous endoscopic gastrostomy; RAI: right atrial isomerism; SVC: superior vena cava

4 **ACKNOWLEDGEMENTS**

5 Debbie Rolfe, Senior Regulatory Assurance Manager, St. George's University Hospitals NHS
6 Foundation Trust, for guidance with Integrated Research Application System and Research
7 Governance.
8 Medical Records Department, Royal Brompton & Harefield NHS Foundation Trust, for assistance
9 in locating and retrieving paper notes.

10

11 **SOURCES OF FUNDING**

12 Dr Fotaki was funded by the European Society of Cardiology - Young Researcher Grant.

13

14 **DISCLOSURES**

15 None

16 **DATA SHARING STATEMENT**

17 Extra data is available by emailing AF.

18 **CONTRIBUTORY STATEMENT**

19 AF and VD were involved in the retrieval of patient records and data collection. AF, JSC, SB and
20 VD were involved in the design of the questionnaires and letters to parents. AF, WB, JSC were
21 involved in the statistical analysis of the data. All authors were involved in the conception,
22 design and interpretation of the data. All authors have been involved in drafting the manuscript
23 or revising in critically and have given final approval of the version to be published. AF is
24 responsible for the overall content as guarantor together with JSC.

25

26 **AFFILIATIONS**

1 Brompton Centre for Fetal Cardiology, Royal Brompton & Harefield NHS Foundation Trust,
2 Royal Brompton Hospital, London, UK (A.F., V.L.D., J.S.C.); Fetal Medicine Unit, St. George's
3 University Hospitals NHS Foundation Trust, St. George's Hospital, London, UK (A.F., J.S.C.);
4 Department of Medical Statistics, Research & Development, Royal Brompton & Harefield NHS
5 Foundation Trust, London, UK (W.B.); Department of Neonatal & Paediatric Surgery, St. George's
6 University Hospitals NHS Foundation Trust, London, UK (S.G.); Department of Neonatal Unit, St.
7 George's University Hospitals NHS Foundation Trust, London, UK (S.B.); Molecular & Clinical
8 Sciences Research Institute, St George's University of London, London, UK (J.S.C.).
9

1 **REFERENCES**

- 2 1. Raya A and Izpisua Belmonte JC. Insights into the establishment of left-right
3 asymmetries in vertebrates. *Birth Defects Res C Embryo Today*. 2008;84:81-94.
- 4 2. Raya A and Izpisua Belmonte JC. Sequential transfer of left-right information during
5 vertebrate embryo development. *Curr Opin Genet Dev*. 2004;14:575-81.
- 6 3. Lin AE, Ticho BS, Houde K, Westgate MN and Holmes LB. Heterotaxy: associated
7 conditions and hospital-based prevalence in newborns. *Genet Med*. 2000;2:157-72.
- 8 4. Salavitarbar A, Anderson BR, Aspelund G, Starc TJ and Lai WW. Heterotaxy syndrome and
9 intestinal rotational anomalies: Impact of the Ladd procedure. *J Pediatr Surg*. 2015;50:1695-
10 700.
- 11 5. Yu DC, Thiagarajan RR, Laussen PC, Laussen JP, Jaksic T and Weldon CB. Outcomes after
12 the Ladd procedure in patients with heterotaxy syndrome, congenital heart disease, and
13 intestinal malrotation. *JPediatrSurg*. 2009;44:1089-1095.
- 14 6. Nakada K, Kawaguchi F, Wakisaka M, Nakada M, Enami T and Yamate N. Digestive tract
15 disorders associated with asplenia/polysplenia syndrome. *J Pediatr Surg*. 1997;32:91-4.
- 16 7. Ditchfield MR and Hutson JM. Intestinal rotational abnormalities in polysplenia and
17 asplenia syndromes. *PediatrRadiol*. 1998;28:303-306.
- 18 8. Strouse PJ. Disorders of intestinal rotation and fixation ("malrotation"). *Pediatr Radiol*.
19 2004;34:837-51.
- 20 9. Ferdman B, States L, Gaynor JW, Hedrick HL and Rychik J. Abnormalities of intestinal
21 rotation in patients with congenital heart disease and the heterotaxy syndrome. *Congenit Heart*
22 *Dis*. 2007;2:12-8.
- 23 10. Tashjian DB, Weeks B, Brueckner M and Touloukian RJ. Outcomes after a Ladd
24 procedure for intestinal malrotation with heterotaxia. *J Pediatr Surg*. 2007;42:528-31.
- 25 11. Graziano K, Islam S, Dasgupta R, Lopez ME, Austin M, Chen LE, Goldin A, Downard CD,
26 Renaud E and Abdullah F. Asymptomatic malrotation: Diagnosis and surgical management: An

- 1 American Pediatric Surgical Association outcomes and evidence based practice committee
2 systematic review. *J Pediatr Surg.* 2015;50:1783-90.
- 3 12. McVay MR, Kokoska ER, Jackson RJ and Smith SD. Jack Barney Award. The changing
4 spectrum of intestinal malrotation: diagnosis and management. *Am J Surg.* 2007;194:712-7;
5 discussion 718-9.
- 6 13. Carvalho JS, Allan LD, Chaoui R, Copel JA, DeVore GR, Hecher K, Lee W, Munoz H, Paladini
7 D, Tutschek B and Yagel S. ISUOG Practice Guidelines (updated): sonographic screening
8 examination of the fetal heart. *Ultrasound Obstet Gynecol.* 2013;41:348-59.
- 9 14. Pockett CR, Dicken B, Rebeyka IM, Ross DB and Ryerson LM. Heterotaxy syndrome: is a
10 prophylactic Ladd procedure necessary in asymptomatic patients? *Pediatr Cardiol.* 2013;34:59-
11 63.
- 12 15. Andrassy RJ and Mahour GH. Malrotation of the midgut in infants and children: a 25-
13 year review. *Arch Surg.* 1981;116:158-60.
- 14 16. Sadler TW and Langman J. Third week of development: Trilaminar germ disc. In: T. W.
15 Sadler, ed. *Langman's Medical Embryology.* 12 ed. Philadelphia, USA: Wolters Kluwer
16 Health/Lippincott Williams & Wilkins; 2012: 51 - 62.
- 17 17. Sadler TW and Langman J. Cardiovascular System. In: T. W. Sadler, ed. *Langman's*
18 *Medical Embryology.* 12 ed. Philadelphia, USA: Wolters Kluwer Health/Lippincott Williams &
19 Wilkins; 2012: 162 - 200.
- 20 18. Elder CT, Metzger R, Arrington C, Rollins M and Scaife E. The role of screening and
21 prophylactic surgery for malrotation in heterotaxy patients. *J Pediatr Surg.* 2014;49:1746-8.
- 22 19. Atz AM, Cohen MS, Sleeper LA, McCrindle BW, Lu M, Prakash A, Breitbart RE, Williams
23 RV, Sang CJ, Wernovsky G and Investigators of the Pediatric Heart N. Functional state of patients
24 with heterotaxy syndrome following the Fontan operation. *Cardiol Young.* 2007;17 Suppl 2:44-
25 53.

- 1 20. Tan YW, Khalil A, Kakade M, Carvalho JS, Bradley S, Cleeve S and Giuliani S. Screening
2 and Treatment of Intestinal Rotational Abnormalities in Heterotaxy: A Systematic Review and
3 Meta-Analysis. *J Pediatr*. 2016;171:153-62 e1-3.
- 4 21. Bartz PJ, Driscoll DJ, Dearani JA, Puga FJ, Danielson GK, O'Leary PW, Earing MG, Warnes
5 CA, Hodge DO and Cetta F. Early and late results of the modified fontan operation for heterotaxy
6 syndrome 30 years of experience in 142 patients. *J Am Coll Cardiol*. 2006;48:2301-5.
- 7 22. Papillon S, Goodhue CJ, Zmora O, Sharma SS, Wells WJ, Ford HR, Upperman JS, Wang KS,
8 Bushman GA, Kim R and Pierce JR. Congenital heart disease and heterotaxy: upper
9 gastrointestinal fluoroscopy can be misleading and surgery in an asymptomatic patient is not
10 beneficial. *J Pediatr Surg*. 2013;48:164-9.
- 11 23. Hill SJ, Heiss KF, Mittal R, Clabby ML, Durham MM, Ricketts R and Wulkan ML.
12 Heterotaxy syndrome and malrotation: does isomerism influence risk and decision to treat. *J*
13 *Pediatr Surg*. 2014;49:934-7; discussion 937.
- 14 24. White SC, Dean PN, McGahren ED, Gangemi JJ and Vergales J. Malrotation is not
15 associated with adverse outcomes after cardiac surgery in patients with heterotaxy syndrome. *J*
16 *Pediatr Surg*. 2018;53:1494-1498.
- 17 25. Pockett CR, Dicken BJ, Rebeyka IM, Ross DB and Ryerson LM. Heterotaxy syndrome and
18 intestinal rotation abnormalities: a survey of institutional practice. *J Pediatr Surg*.
19 2013;48:2078-83.
- 20 26. Choi M, Borenstein SH, Hornberger L and Langer JC. Heterotaxia syndrome: the role of
21 screening for intestinal rotation abnormalities. *ArchDisChild*. 2005;90:813-815.
- 22 27. Borenstein SH and Langer JC. Heterotaxia syndromes and their abdominal
23 manifestations. *Curr Opin Pediatr*. 2006;18:294-7.
- 24 28. Abbas PI, Dickerson HA and Wesson DE. Evaluating a management strategy for
25 malrotation in heterotaxy patients. *J Pediatr Surg*. 2016;51:859-62.

1 29. Cullis PS, Siminas S, Salim A, Johnson R and Losty PD. Heterotaxy and intestinal rotation
2 anomalies: 20 years experience at a UK regional paediatric surgery centre. *Pediatr Surg Int.*
3 2015;31:1127-31.

4 30. Prendiville TW, Barton LL, Thompson WR, Fink DL and Holmes KW. Heterotaxy
5 syndrome: defining contemporary disease trends. *Pediatr Cardiol.* 2010;31:1052-8.

6

7

8

9

10

11

12

13

14

15

16

17

18

19

20

21

22

23

24

25

26

27

1

2

3

FIGURE LEGENDS

Figure 1a: Kaplan-Meier curve, showing freedom from cardiac intervention for the whole cohort.

Figure 1b: Kaplan-Meier curve, comparing freedom from cardiac intervention for RAI versus LAI.

Figure 2a: Kaplan-Meier curve, showing freedom from any GI surgery for the whole cohort.

Figure 2b: Kaplan-Meier curve, comparing freedom from any GI surgery for RAI versus LAI.

medRxiv preprint doi: <https://doi.org/10.1101/2020.05.24.20112078>; this version posted May 25, 2020. The copyright holder for this preprint (which was not certified by peer review) is the author/funder, who has granted medRxiv a license to display the preprint in perpetuity. All rights reserved. No reuse allowed without permission.

Figure 3a: Kaplan-Meier curve, showing freedom from Ladd surgery for the whole cohort.

Figure 3b: Kaplan-Meier curve, comparing freedom from Ladd surgery for RAI versus LAI.

FIGURES

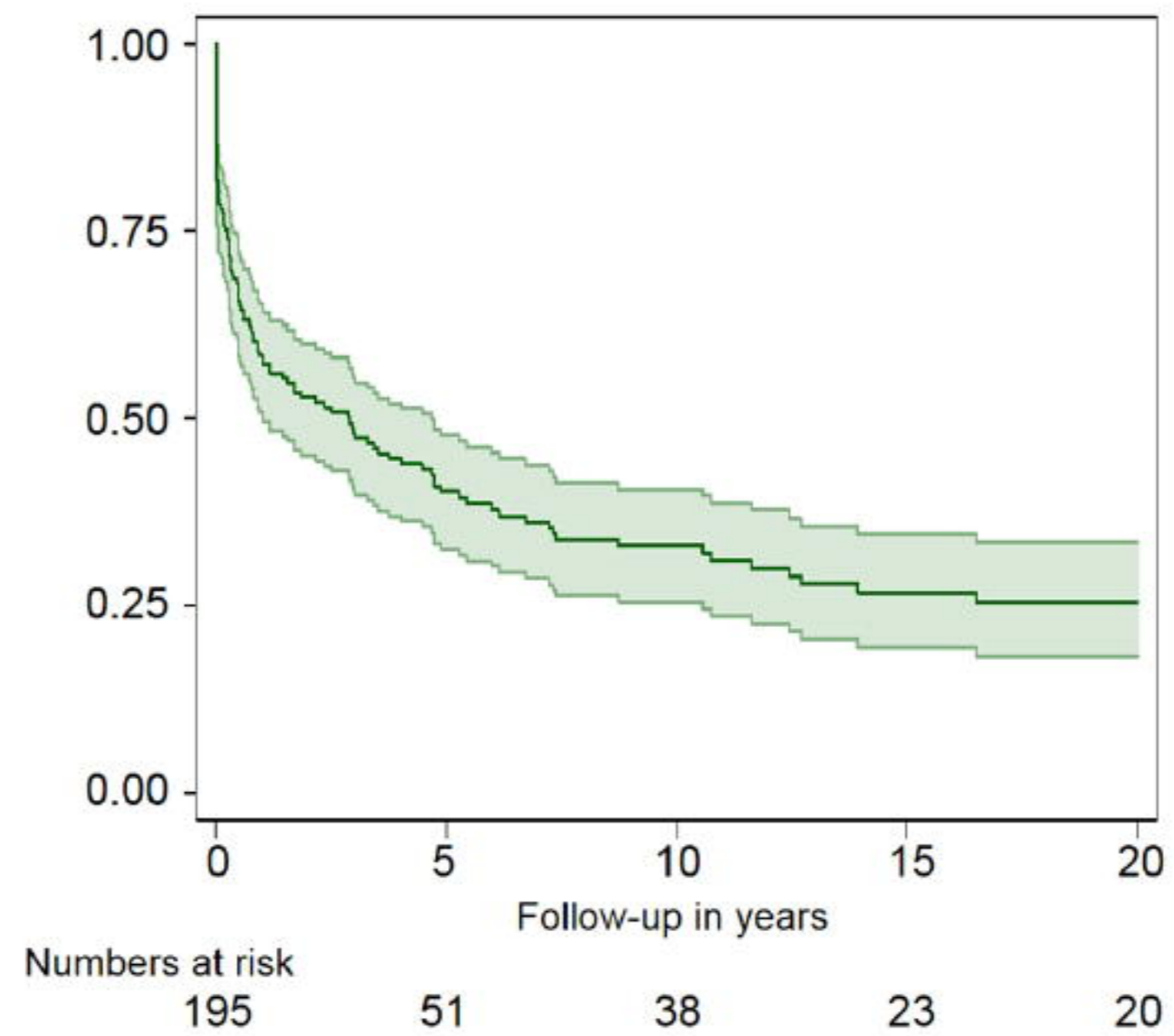


Figure 1a: Kaplan-Meier curve, showing freedom from cardiac intervention for the whole cohort.

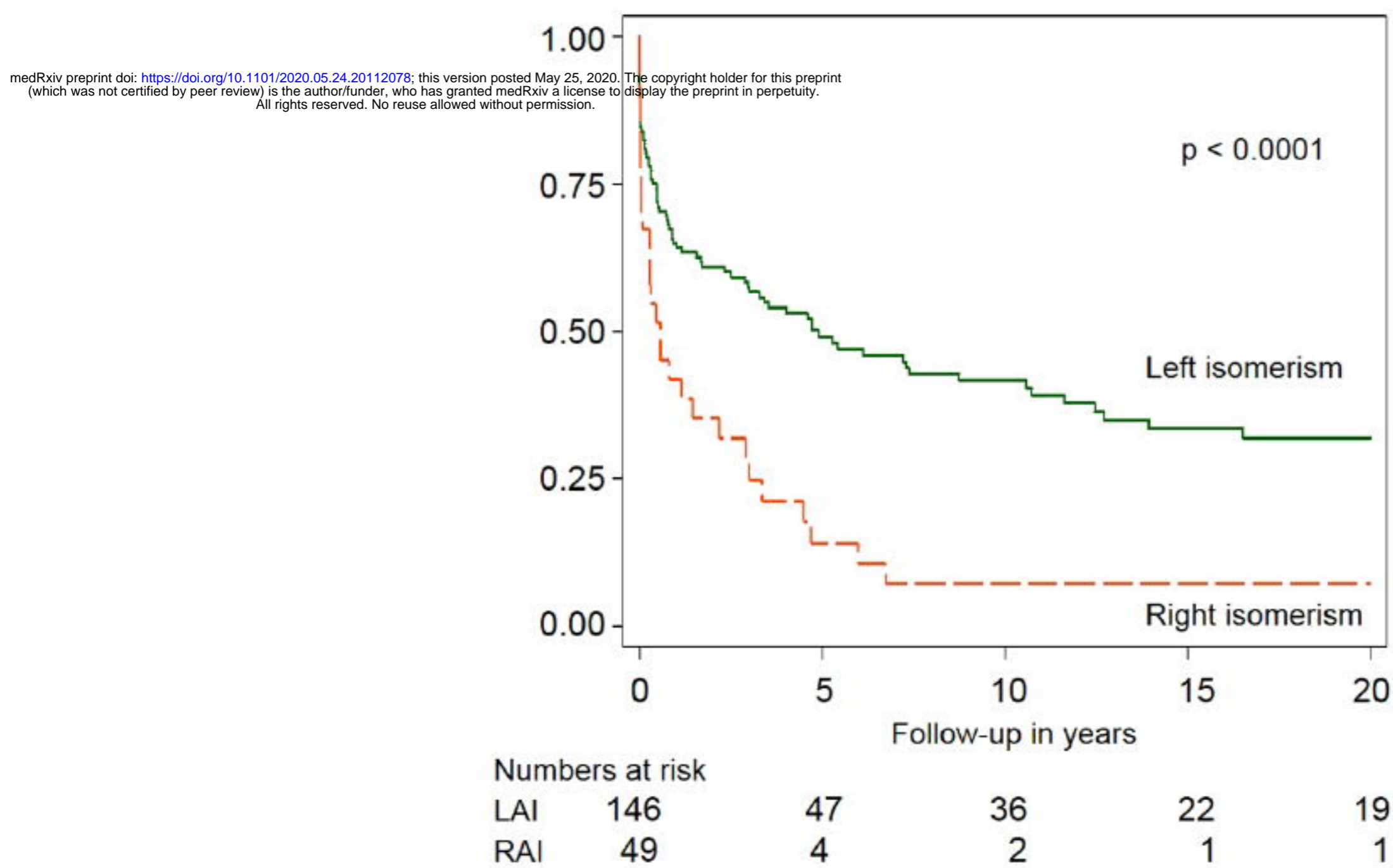


Figure 1b: Kaplan-Meier curve, comparing freedom from cardiac intervention for RAI versus LAI.

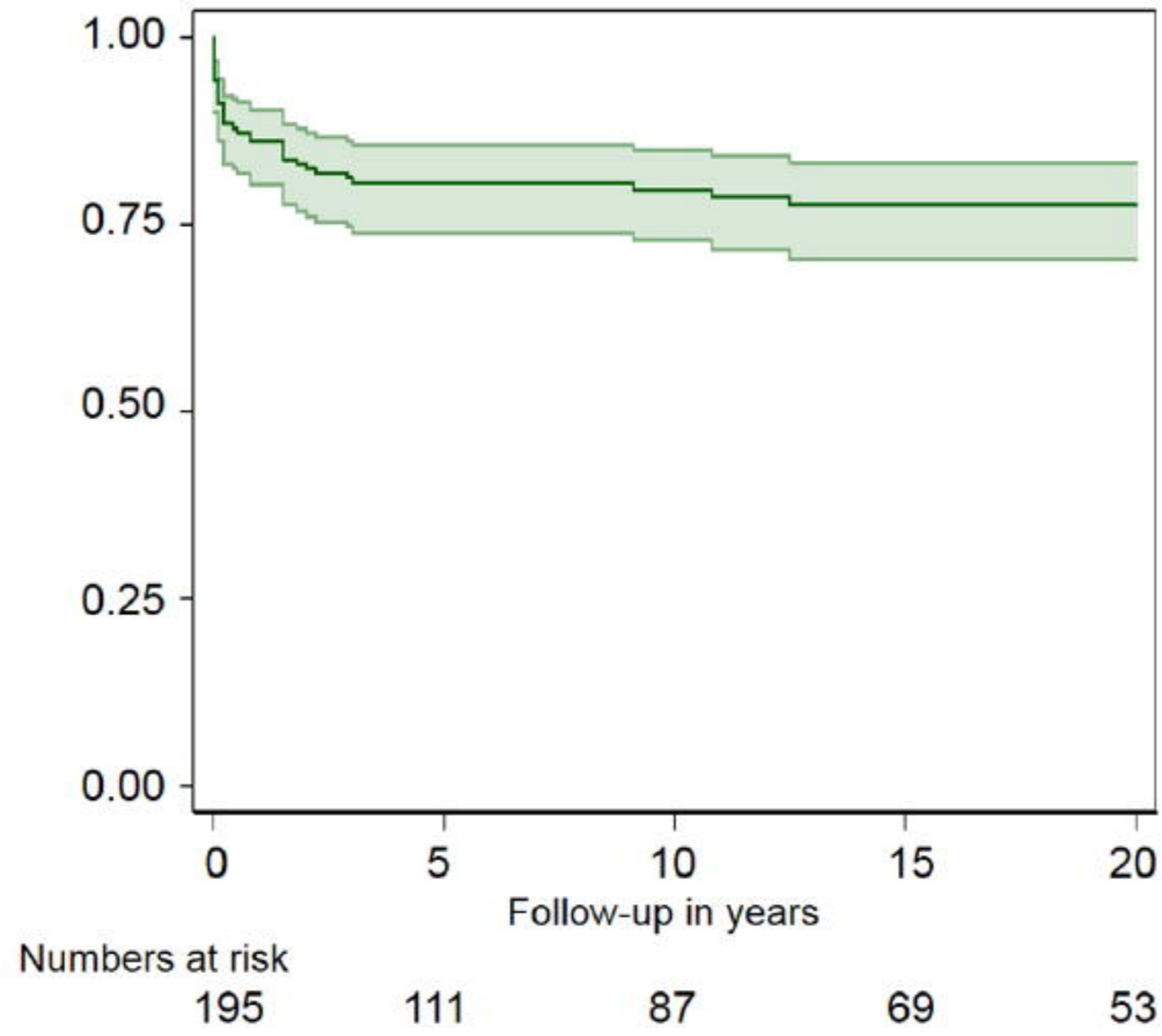


Figure 2a: Kaplan-Meier curve, showing freedom from any GI surgery for the whole cohort.

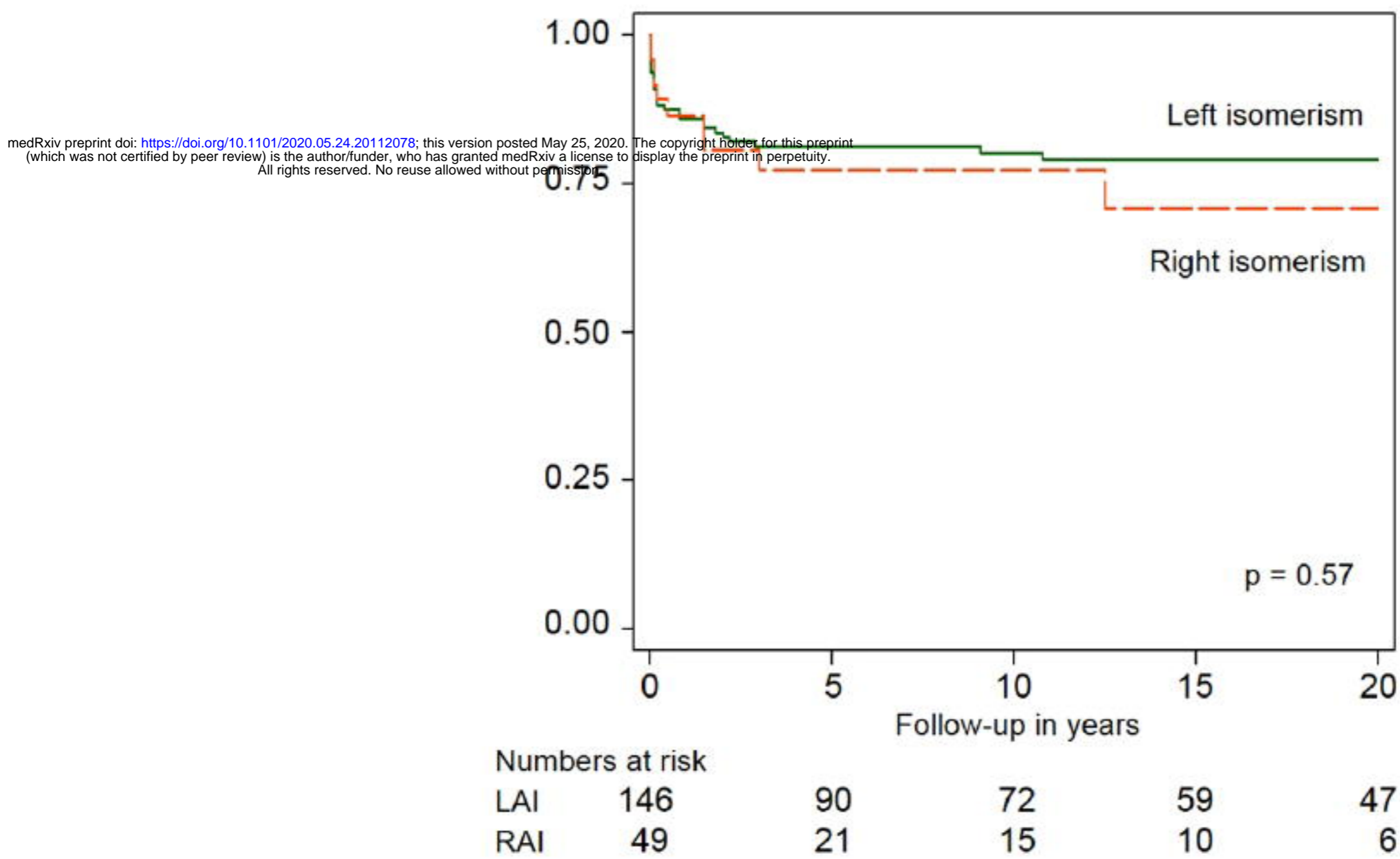


Figure 2b: Kaplan-Meier curve, comparing freedom from any GI surgery for RAI versus LAI.

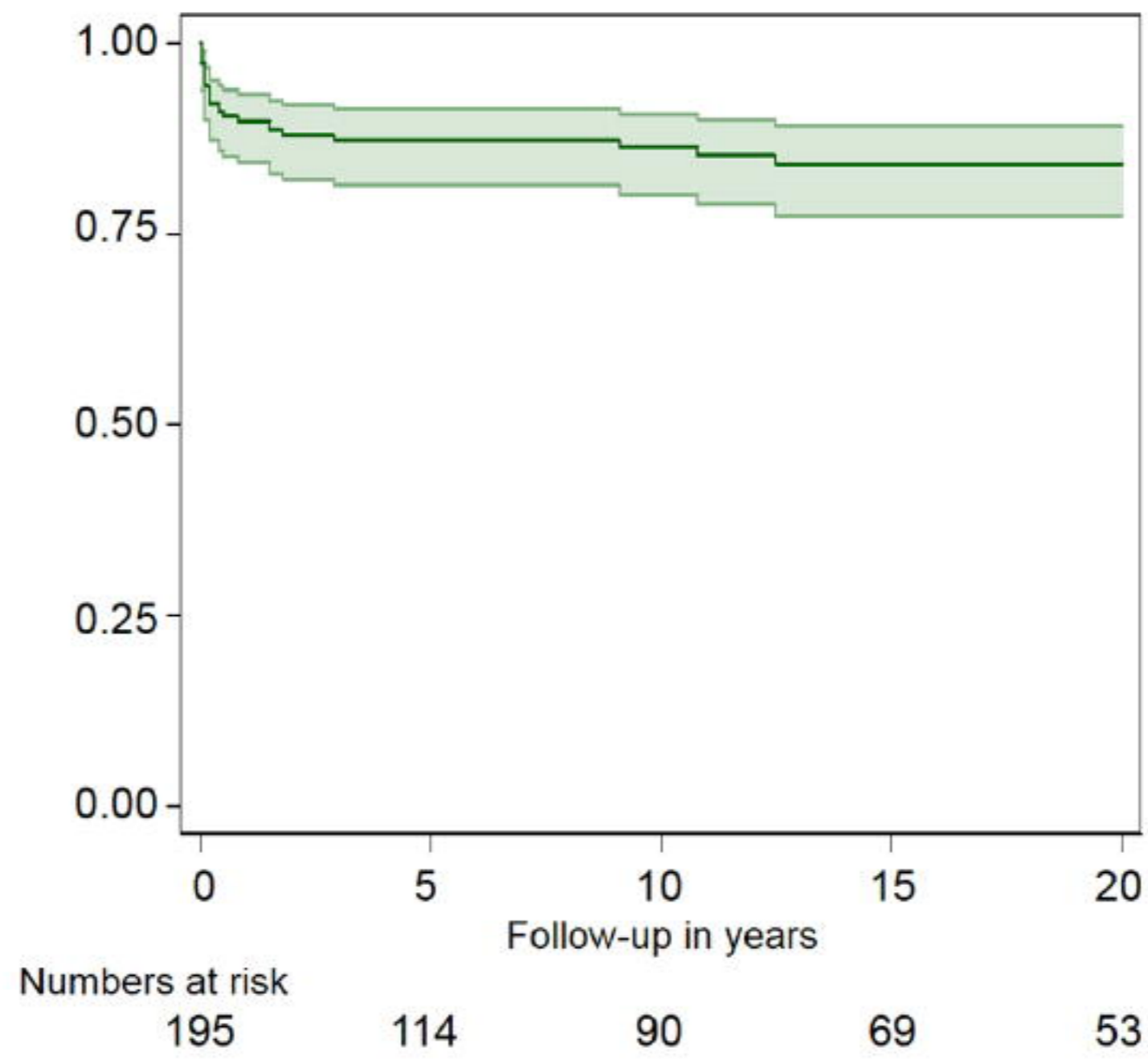


Figure 3a: Kaplan-Meier curve, showing freedom from Ladd surgery for the whole cohort.

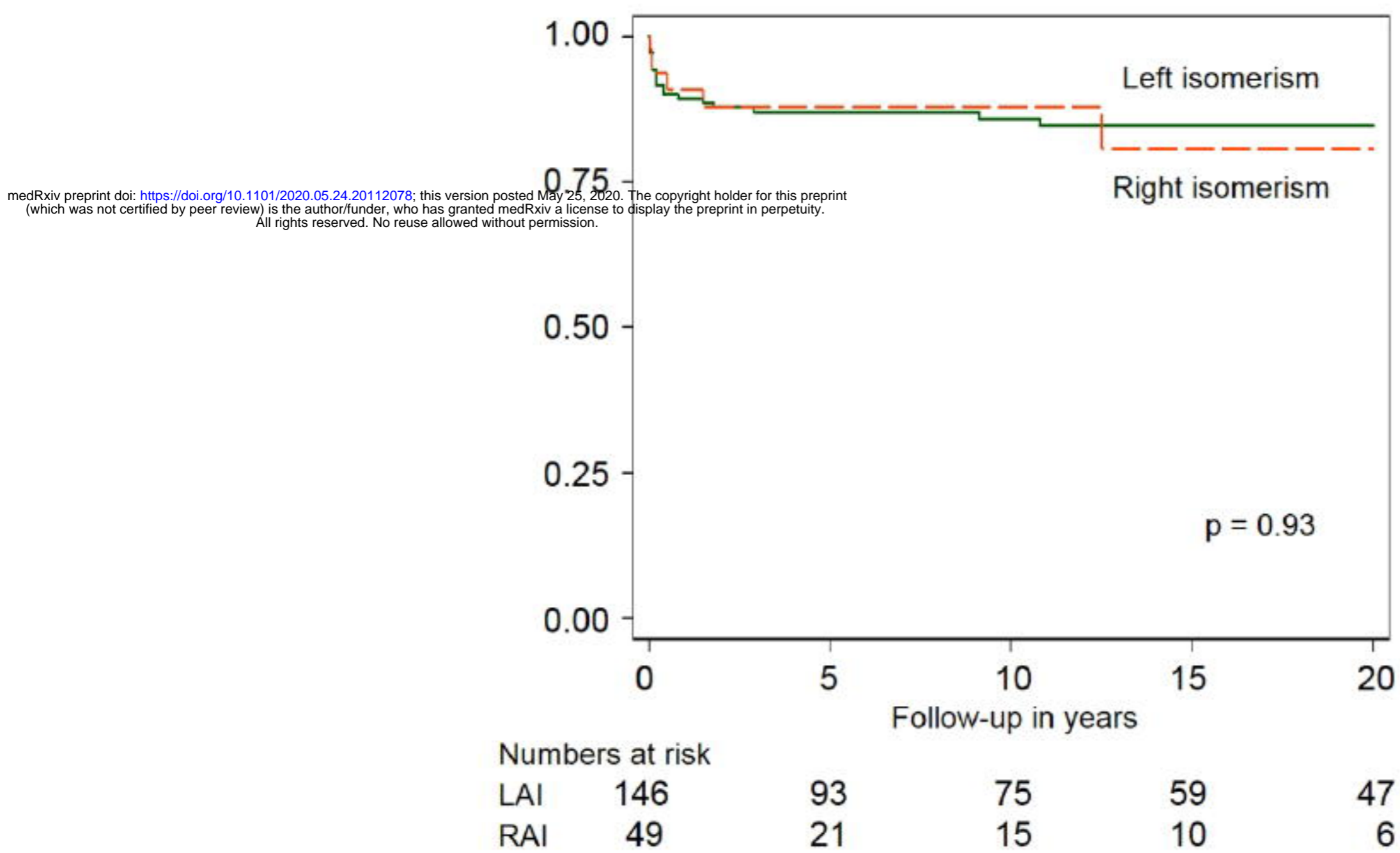


Figure 3b: Kaplan-Meier curve, comparing freedom from Ladd surgery for RAI versus LAI.