

Pharmacoepidemiology of comorbid chronic pain and depression: Insights from a case-control study

William H. Roughan^{1,2*}, Adrian I. Campos^{1,2,*}, Luis M. García-Marín¹, Gabriel Cuéllar-Partida^{1,**}, Michelle K. Lupton¹, Ian B. Hickie³, Sarah E. Medland¹, Naomi R. Wray^{4,5}, Enda M. Byrne⁴, Trung T. Ngo^{2,6}, Nicholas G. Martin^{1‡} and Miguel E. Rentería^{1,2‡}

1. QIMR Berghofer Medical Research Institute, Brisbane QLD Australia

2. Faculty of Medicine, The University of Queensland, Brisbane QLD Australia

3. Brain and Mind Centre, University of Sydney, Camperdown NSW Australia

4. Institute for Molecular Bioscience, The University of Queensland, Brisbane, QLD Australia

5. Queensland Brain Institute, The University of Queensland, Brisbane QLD Australia

6. UQ Diamantina Institute, The University of Queensland & Translational Research Institute, Brisbane QLD Australia

* These authors contributed equally to this work.

‡These authors jointly directed this study.

**Current address: 23andMe Inc, Sunnyvale, CA, USA.

Correspondence: Miguel E. Rentería (miguel.renteria@qimrberghofer.edu.au) and Nicholas G. Martin (nick.martin@qimrberghofer.edu.au)

SUMMARY

Background: The bidirectional relationship between depression and chronic pain is well recognized but their clinical management remains challenging. Here we characterize the shared aetiology and risk factors for their comorbidity using large population cohorts to advance understanding of pharmacological treatment outcomes.

Methods: Participants completed online questionnaires about chronic pain, psychiatric symptoms, comorbidities, treatment response and general health (N=13,839). Logistic regression models were used to examine the relationship between chronic pain and clinical and demographic factors. Cumulative linked logistic regressions assessed the effect of chronic pain on treatment response for 10 different antidepressants.

Findings: Chronic pain was associated with an increased risk of depression (OR=1.86 [1.37–2.54]), recent suicide attempt (OR=1.88[1.14–3.09]), higher use of alcohol, tobacco and painkiller misuse. Participants with comorbid chronic pain and depression reported fewer functional benefits from antidepressant use and lower benefits from sertraline (OR=0.75[0.68–0.83]), escitalopram (OR=0.75[0.67–0.85]) and venlafaxine (OR=0.78[0.68–0.88]) when compared to participants without chronic pain. Furthermore, participants taking sertraline (OR=0.45[0.30–0.67]), escitalopram (OR=0.45[0.27–0.74]) and citalopram (OR=0.32[0.15–0.67]) specifically for chronic pain reported lower benefits compared to other participants taking these same medications but not for chronic pain.

Interpretation: The findings reveal novel insights into the complex relationship between chronic pain and depression. Treatment response analyses indicate differential effectiveness between particular antidepressants and poorer functional outcomes for these comorbid conditions. Further assessment is warranted in targeted interventional trials. This approach will advance precision psychiatry and assist in clinical management by choosing the most suitable treatment for patients, informed by specific symptoms and comorbidities.

NOTE: This preprint reports new research that has not been certified by peer review and should not be used to guide clinical practice.

Funding source: Data collection for the *Australian Genetics of Depression Study* was possible thanks to funding from the Australian National Health and Medical Research Council (NHMRC) to NGM (GNT1086683); data collection for the *Prospective Imaging Study of Ageing: Genes, Brain and Behaviour* was possible thanks to an NHMRC Dementia Research Team Grant administered by QIMR Berghofer Medical Research Institute (GNT1095227). The research funders did not participate in the study design, data analyses, results interpretation or writing of the manuscript.

INTRODUCTION

Depression is estimated to affect over 264 million people worldwide and is a leading cause of global disability.¹ Its clinical manifestations and outcomes are highly heterogeneous, with multiple factors underlying susceptibility, progression and treatment response.² One important factor that frequently complicates the diagnosis of depression is comorbid chronic pain,³ as patients presenting with pain are more likely to be investigated medically rather than as part of a broader biopsychosocial framework.⁴ Depression and chronic pain frequently coexist, with up to 61% of chronic pain patients also presenting with depression.⁵ Importantly, the combination of chronic pain and depression is more disabling and more costly to treat than either condition in isolation.³ Patients with comorbid chronic pain and depression are also at increased risk of substance use disorder.⁶ These three conditions synergistically elevate the risk of premature death, cardiovascular disease and cancer.⁶

Chronic pain has been defined by the International Association for the Study of Pain (IASP) as pain persisting or recurring for longer than three months.⁷ In contrast to acute pain, which alerts individuals to potential or real tissue damage, chronic pain serves no apparent physiological purpose and persists beyond normal healing time.⁷ In 2016, 1.6 million Australians over the age of 45 had chronic pain,⁸ while globally, lower back and neck pain were identified as the leading cause of disability.¹ Furthermore, estimates suggest chronic pain cost the Australian economy \$139 billion in 2018, mostly due to lost productivity and impaired quality of life.⁸ Predictions suggest this cost will almost triple by 2050.⁹ In the United States, the cost is already over \$500 billion per year.^{10,11}

The relationship between chronic pain and depression is bidirectional, as having either chronic pain or depression increases the risk of developing the other condition.¹² Furthermore, the relationship is thought to be dose-dependent, as more severe pain is associated with greater severity of depression.¹³ That is especially true for elderly populations,¹² who also report the highest prevalence (13%)¹² of comorbid chronic pain and depression out of all age groups.³

Although the precise causal mechanisms between chronic pain and depression remain elusive, recent large-scale human genetic¹⁴ and animal model studies^{15,16} have made important inroads. For example, an imbalance of neurotransmitters and hormones has been observed in both depression and chronic pain.¹⁷ Consequently, antidepressants,

which increase monoamine levels in the central nervous system, are used in the pharmacological treatment of both conditions.¹⁸ However, antidepressants are generally prescribed in lower doses for the treatment of chronic pain, compared to the higher doses required for antidepressant effects.¹⁹

Serotonin noradrenaline reuptake inhibitors (SNRIs; e.g., duloxetine) and selective serotonin reuptake inhibitors (SSRIs; e.g., paroxetine, sertraline) are commonly used antidepressants for the treatment of comorbid chronic pain and depression.¹⁸ Other antidepressant options include tricyclic antidepressants (TCAs) such as amitriptyline.¹⁸ These medications have been found to partially reduce the symptoms of both depression and pain.¹⁸ No significant differences in efficacy between these medications have been identified so far,²⁰ however further research is required.¹⁸ For example, it has not been possible to compare the efficacy of TCAs against other antidepressants for the treatment of comorbid chronic pain and depression, due to a lack of rigorous studies.²⁰

Despite the high prevalence and cost of comorbid chronic pain and depression³, research efforts have yet to deliver clinically useful findings and recommendations.^{6,21} For example, a recent review highlighted that it was unclear which specific antidepressant should be prescribed as the first-line pharmacological treatment for comorbid chronic pain and depression.¹⁸ Pharmacoepidemiological studies — which examine the use and effect of medications in large population cohorts — have been proposed as a cost-effective method for reviewing pharmaceutical safety and effectiveness, as well as helping to inform clinical guideline development.²²

In the current study, we examined the pharmacoepidemiology of comorbid chronic pain and depression in the Australian Genetics of Depression Study (AGDS) — one of the world's largest participant cohorts with a detailed history of depression and its comorbidities.²³ Here we sought to: (i) quantify the association between depression and chronic pain; (ii) assess the dependency between chronic pain severity, depression severity and recent suicidality; (iii) identify other psychiatric disorders and patterns of recent substance use that are associated with comorbid chronic pain and depression; and (iv) assess the impact of comorbid chronic pain and depression on antidepressant effectiveness.

METHODS

Participants. This study comprised data from two cohorts: AGDS and the Prospective Imaging Study of Aging (PISA). Participants in both groups provided informed consent before participating. These studies, including all questionnaires used, were approved by the QIMR Berghofer Medical Research Institute's Human Research Ethics Committee.

AGDS cohort. 20,689 participants from across Australia were recruited through an open media campaign and targeted mailout. The publicity campaign, from which 86% of

participants were recruited, included both conventional and online social media. The campaign appealed for anyone who “had been treated by a doctor, psychiatrist or psychologist for depression” to visit our website (<https://www.geneticsofdepression.org.au>). For the targeted mailout, invitation letters were sent by the Australian Government Department of Human Services (DHS) to individuals who, according to their records, had received at least four prescriptions for any of the ten most commonly used antidepressants in the last 4.5 years. DHS did not, at any time, share any personal information with the research team. Potential participants were directed to our website, which contained information about the study, a registration and consent form, and a comprehensive online questionnaire. The essential inclusion criteria included having been prescribed and taken antidepressants, and providing consent to donate a saliva sample for subsequent genotyping. No participant was excluded based on comorbid conditions. The online survey assessed mental health diagnoses, antidepressant response, suicidality, general health and substance use, among several other variables. A baseline description of the cohort has been published elsewhere.²³

PISA cohort. The Prospective Imaging Study of Ageing (PISA) is a longitudinal cohort of Australian adults.²⁴ The population-based sample recruitment pool comprised adult twins, their spouses, and first-degree relatives of twins and spouses who over previous decades, had volunteered for studies on risk factors or biomarkers for physical or psychiatric conditions and had previously been genome-wide genotyped.^{25,26} The PISA protocol consisted of online questionnaires, including history of mental health diagnoses and the same pain questionnaire in AGDS. It was completed by N=2,469 PISA participants. For that reason, AGDS and PISA data were used in the present study to assess the effect of depression and demographics (e.g., age, sex) on chronic pain. All other analyses described in this manuscript were performed only in the AGDS cohort.

Depression, chronic pain and ascertainment. AGDS participants were asked to self-report whether they had ever been diagnosed with depression by a health professional, and similarly for 19 other psychiatric conditions. Individuals were classified as depression cases if they had reported both a depression diagnosis and had been prescribed antidepressants in the past five years (N=17,849). Participants were also asked to indicate whether they experienced chronic pain in their daily life and to rank its intensity on a scale from 0–10. Only those reporting pain (rating >0) progressed to the remainder of the pain module, which included questions about the duration and location of their primary pain. Following the IASP guidelines, chronic pain was defined as pain persisting or recurring for at least three months.¹⁸ Cases were classified as having comorbid chronic pain and depression if they fulfilled the criteria for both conditions (N=6,895), and *controls* were classified as those who reported depression but no chronic pain (N=4,475). We performed a complete case analysis. Thus, participants with missing data for chronic pain (i.e., did not complete the section; N=6,463) were excluded from analyses that needed data for both chronic pain and depression.

Recent suicidality and substance use. Suicidal ideation over the last month was measured on a 10-point scale: 0 indicated having no suicidal ideation in the past month (never) and 10 denoted persistent suicidal ideation. Participants with score >0 were classified as positive cases for suicidal ideation. Suicide attempt was measured using a similar 10-point scale in regard to how close a participant had come to making an attempt. Only those with a score of 10 (labelled as "I have made an attempt") were considered cases for suicide attempt. Participants also reported their frequency in using a range of substances over the last three months. Alcohol consumption frequency was measured as the number of days the participant drank three or more standard drinks. For all other substances, the response options were: "never" (0), "once or twice" (1), "monthly" (2), "weekly" (3) or "daily" (4). These responses were modelled as continuous variables when assessing their correlation with chronic pain.

Antidepressant use and response. Participants were asked whether they had ever been prescribed any of the ten most commonly used antidepressants in Australia for any indication. These are sertraline, escitalopram, venlafaxine, amitriptyline, mirtazapine, desvenlafaxine, citalopram, fluoxetine, duloxetine and paroxetine. Information regarding the reason(s) for prescription was collected using a checklist of 17 possible responses including depression, chronic pain, and anxiety (among others). Multiple selections were possible. Participants were asked to report on the best aspects of taking antidepressants using the following item: "What were the best aspects of taking the antidepressant(s)? Include any antidepressant you have taken." Participants were then able to select all that apply out of a list including: relief of depressive symptoms, relief of other symptoms e.g. sleep disturbance, reduction in suicidal ideation, return of normal emotion, improved relationships, returning to normal activities and restored control over mood. Moreover, participants rated the effectiveness of each antidepressant they had taken, using a scale ranging from 0 (e.g., "sertraline works not at all well for me") to 2 (e.g., "sertraline works very well for me"). Two analyses were performed: (i) first, antidepressant effectiveness was compared between participants who reported taking an antidepressant prescribed for chronic pain against the rest of the participants (i.e., not prescribed for chronic pain); and (ii) we compared antidepressant effectiveness between participants reporting chronic pain and those reporting no chronic pain (regardless of explicit indication).

Statistical analyses. The relationship between chronic pain and several other variables of interest was assessed using multivariable logistic regression. This approach enabled us to quantify the associations while adjusting for age, sex and all other relevant factors (e.g., the correlation between alcohol and chronic pain while keeping usage of all other substances *equal*). Fully adjusted odds ratios were calculated from effect sizes on the logit scale, and p-values were estimated using Wald-tests. For all analyses, the presence of chronic pain was modelled as a binary variable, while chronic pain severity was modelled as a quantitative score from zero to 10. The relationship between chronic pain and antidepressant response was examined using *cumulative link logistic regressions* to accurately model treatment response, which was coded on an ordinal scale. Furthermore, to assess the effect of chronic pain across all antidepressants, a random effect was

included to account for repeated responses from participants. This analysis was performed in R using the ordinal package and the *clm* and *clmm* functions, adjusting for the effects of sex and age when antidepressant treatment started. All other statistical analyses were performed and figures generated in *python* using these modules: *statsmodels*, *scipy*, *numpy*, *pandas*, *matplotlib* and *seaborn*.

RESULTS

Sample demographics and association between chronic pain and depression

Demographics and chronic pain prevalence for both AGDS (enriched for depression) and PISA (not enriched for depression) cohorts are shown in **Table 1 and Supplementary Figures 1 and 2**. **Figure 1** shows the prevalence of chronic pain by age, stratified by cohort. A significant cohort effect is evident. Despite the PISA cohort being older on average (**Supplementary Figure 1**), the AGDS cohort showed a higher prevalence of chronic pain. This cohort effect is partly attributable to depression status (Depression OR= 1.86 [1.37–2.54]), as it was non-significant after accounting for the effect of depression (Cohort_{AGDS} OR=1.32 [0.97–1.79]). Furthermore, a higher age (OR= 1.02 [1.02–1.03]), lower educational attainment (OR=0.89 [0.86–0.91]), and being female (OR= 1.16 [1.07–1.25]) were associated with chronic pain (**Supplementary Table 1**).

Chronic pain is associated with severity of depression and recent suicidality

Results presented here are from AGDS where all participants reported depression. Higher pain severity (intensity) was found to be associated with longer durations of pain (**Supplementary Figure 3**). Increased pain severity was also associated with an increased number of depressive episodes (**Supplementary Figure 4**). The prevalence of suicidal ideation was higher in the comorbid chronic pain group (OR=1.49 [1.38–1.61]). Likewise, recent suicide attempt was associated with chronic pain (OR=1.88 [1.14–3.09]). Within the chronic pain group, recent suicidal thoughts and suicide attempt scores were also positively correlated with chronic pain severity scores (**Supplementary Figure 4**).

Comorbid psychiatric diagnoses and recent substance use

In this subsection, the results presented are from AGDS where all participants reported depression. Out of the nineteen mental health conditions examined, social anxiety disorder was found to have the strongest association with chronic pain ($p < 0.01$). Anorexia nervosa was found to be negatively associated with the likelihood of developing chronic pain ($p < 0.05$). Although both of these results were nominally significant, no association survived correction for multiple testing (**Figure 2, Supplementary Table 2**). Notably, chronic pain was significantly associated with increased use of alcohol and tobacco, as well as painkiller misuse (e.g., opioids). Nominal associations were observed for other drugs such as cocaine (negative relationship) and opioids (**Figure 2, Supplementary Table 3**).

Chronic pain and antidepressant response

In this subsection, the results presented are from AGDS where all participants reported depression. The three most commonly prescribed antidepressants for the indication of chronic pain were amitriptyline (N=606), duloxetine (N=288) and sertraline (N=160; **Supplementary Figure 5**). Overall, the large majority of participants with chronic pain did not report an antidepressant prescription for chronic pain (**Supplementary Table 4**). Participants with chronic pain were less likely to report positive benefits from antidepressants such as *relief of depressive symptoms* (**Supplementary Figure 6**). A trend — whereby participants with chronic pain were more likely to report a *reduction in suicidal symptoms* as a positive aspect of antidepressant treatment was noted — but this result did not survive correction for multiple testing (**Supplementary Table 5**). Furthermore, in the chronic pain group, the average self-reported benefits from taking antidepressants was significantly lower compared to the group without chronic pain (OR=0.75 [0.71–0.80]; $p < 2 \times 10^{-16}$). A similar but non-significant finding was observed between the average response of participants prescribed antidepressants for chronic pain versus those without a chronic pain indication (OR=0.94 [0.80–1.1]; **Supplementary Figure 7**). Next we examined whether these findings held true for each antidepressant under study. For most antidepressants, no statistically significant difference in effectiveness was found between participants with chronic pain (or an indication for chronic pain) and participants without chronic pain. Participants with chronic pain who had taken sertraline, escitalopram or venlafaxine, reported significantly lower effectiveness than participants without chronic pain (**Figure 3a**). Furthermore, lower effectiveness of sertraline, escitalopram and citalopram was observed depending on whether they were prescribed for chronic pain or a different clinical indication (**Figure 3b**). The only antidepressants with a positive effect (i.e., greater effectiveness) were duloxetine, venlafaxine and amitriptyline, but only when prescribed for comorbid chronic pain and depression. However, none of the positive associations reached statistical significance (**Figure 3b, Supplementary Table 6, Supplementary Table 7**).

DISCUSSION

We have reported the largest study on comorbid chronic pain and depression treatment outcomes through comprehensive population-based sampling. A key finding is that in participants with comorbid chronic pain and depression, self-reported benefits from taking particular SSRI & SNRI antidepressants (i.e., sertraline, escitalopram, venlafaxine) were significantly lower compared to participants without chronic pain. Indeed, this result is corroborated by participants with chronic pain reporting fewer functional benefits from taking antidepressants, such as relief of depressive symptoms and getting back to normal daily activities. Furthermore, we found that participants prescribed particular SSRI antidepressants (i.e., sertraline, escitalopram, citalopram) *for chronic pain* reported significantly lower benefits compared to those taking the same medications but for a different indication. These results suggest that although SSRI and SNRI antidepressants as a class may be equally efficacious in the treatment of comorbid chronic pain and depression,^{20,27} specific antidepressants have differential effectiveness. By utilizing large

independent population cohorts, we have shown evidence for differential effectiveness between several specific antidepressants in comorbid chronic pain and depression. We consider these findings to be robust because our methodological approach took into account the inherent clinical heterogeneity, high comorbidity and wide individual variation commonly observed in psychiatric disorders, in contrast to highly selective subject sampling in clinical trial studies.

The current study's main findings of differential antidepressant effectiveness and fewer functional benefits from antidepressant use in comorbid chronic pain and depression is further underlined by demonstrating several results consistent with previous research. These include: (i) a strong association between depression and chronic pain;^{3,28,29} (ii) increasing severity of chronic pain was associated with a higher number of depressive episodes experienced by participants¹³ and (iii) older age, lower educational attainment and female sex were associated with higher chronic pain prevalence.^{30–32}

While there have been conflicting reports regarding the link between chronic pain severity and suicidal behaviours,^{33,34–36} we provide evidence that supports an association between comorbid chronic pain and depression with both an increased risk for suicidal ideation and suicide attempt. Considering suicide is a leading cause of death — particularly for young people³⁷ — and depression and chronic pain are both treatable conditions, assessing their comorbidity in at-risk youth populations may help to reduce suicide rates.³³

Consistent with previous observations,²⁹ we also found comorbid chronic pain and depression was associated with recent increased use of alcohol, tobacco and painkillers (e.g., opioids). However, we did not observe a significant association between comorbid chronic pain and depression with a self-reported substance use disorder. Previous reports suggest chronic pain, depression and substance use disorder are often comorbid.³⁸ For example, rates of alcohol use disorder in individuals with comorbid chronic pain and depression are estimated to be between 8.9% to 10%.⁶ It is possible that screening and diagnosis of substance use disorders in Australia may be lacking in those with comorbid chronic pain and depression. As such, clinicians need to consider substance use disorder in patients presenting with this comorbidity, as all three conditions increase the risk for other chronic diseases such as cardiovascular disease and cancer, while also increasing the risk of premature death.⁶

In the current study, amitriptyline was the most commonly prescribed antidepressant to individuals with comorbid chronic pain and depression. Indeed, it was prescribed over two times more frequently than the next most commonly prescribed medication — duloxetine. This finding differs from previous research and some recommendations,¹⁸ which found that duloxetine was the most commonly used antidepressant in comorbid chronic pain and depression. Amitriptyline is a first line treatment for chronic pain, however, its side-effect profile and mortality risk in overdose often limits its use.³⁹ It is possible that the severity of illness in the AGDS cohort, which is enriched for severe and recurrent depression,²³ has necessitated the extensive use of amitriptyline. Alternatively, this finding may reflect a lack

of clarity regarding treatment recommendations for comorbid chronic pain and depression, which has been identified as an area requiring further research.¹⁸

Further research can also address certain limitations in the current study. Information on dosages of the prescribed antidepressants, as well as adjunct therapies such as psychotherapy and pain-specific pharmacotherapies, was not gathered. We also did not assess whether participants were taking combinations of antidepressants. These measures can be included in future work. As the data were based on self-reported responses, they may also be subject to a degree of participant recall bias, and the antidepressant response data may include non-specific (placebo) effects.

The current study suggests pharmacoepidemiological approaches in psychiatry will be increasingly valuable as a cost-effective, first-line strategy to enhance the design, feasibility and clinical utility of randomised controlled trials.⁴⁰ Identifying the differential effectiveness of specific medications and their functional benefits, along with key contributing comorbidities for assessment in targeted interventional trials, will help to accelerate their clinical translation into improved treatment guidelines and patient outcomes.

AUTHOR CONTRIBUTIONS

WHR, AIC and MER designed this study and wrote the first version of the manuscript. AIC performed the analyses with input from MER and WHR. NGM, SEM, NRW and IBH designed and directed the AGDS data collection efforts. NGM and MKL led the PISA study data collection efforts. TTN designed the pain module in both the AGDS and PISA online surveys and conceived the pharmacogenetic investigation of comorbid pain and depression. LMG-M and GC-P contributed to data analyses. All authors contributed to the interpretation of the results and provided feedback on the preliminary versions of the manuscript.

ROLE OF THE FUNDING SOURCE

The research funders did not participate in the study design, data analyses, results interpretation or writing of the manuscript.

COMPETING INTERESTS DECLARATION

IBH has been: Commissioner of Australia's National Mental Health Commission (2012–2018); Co-director of Health and Policy at the Brain and Mind Centre, University of Sydney; leading community-based and pharmaceutical industry-supported projects (Wyeth, Eli Lilly, Servier, Pfizer, AstraZeneca) focused on the identification and better management of anxiety and depression; a member of the Medical Advisory Panel for Medibank Private until October 2017; a board member of Psychosis Australia Trust; a

member of the Veterans Mental Health Clinical Reference group; and Chief Scientific Advisor to and an equity shareholder in Innowell.

ACKNOWLEDGEMENTS

Data collection for AGDS was possible thanks to a funding from the Australian National Health and Medical Research Council (NHMRC) to NGM (GNT1086683). PISA was possible thanks to an NHMRC Dementia Research Team Grant administered by QIMR Berghofer Medical Research Institute (GNT1095227). We thank our colleagues Richard Parker, Simone Cross and Kerrie McAloney for their valuable work coordinating all the administrative and operational aspects of the AGDS and PISA projects. AIC is supported by a UQ Research Training Scholarship from The University of Queensland (UQ). MER thanks the support of NHMRC and Australian Research Council (ARC), through a NHMRC-ARC Dementia Research Development Fellowship (GNT1102821). The views expressed are those of the authors and not necessarily those of the affiliated or funding institutions.

REFERENCES

- 1 GBD 2017 Disease and Injury Incidence and Prevalence Collaborators. Global, regional, and national incidence, prevalence, and years lived with disability for 354 diseases and injuries for 195 countries and territories, 1990-2017: a systematic analysis for the Global Burden of Disease Study 2017. *Lancet* 2018; **392**: 1789–858.
- 2 Mora C, Zonca V, Riva MA, Cattaneo A. Blood biomarkers and treatment response in major depression. *Expert Rev Mol Diagn* 2018; **18**: 513–29.
- 3 Gambassi G. Pain and depression: the egg and the chicken story revisited. *Arch Gerontol Geriatr* 2009; **49 Suppl 1**: 103–12.
- 4 Bair MJ, Robinson RL, Katon W, Kroenke K. Depression and pain comorbidity: a literature review. *Arch Intern Med* 2003; **163**: 2433–45.
- 5 Hooten WM. Chronic Pain and Mental Health Disorders: Shared Neural Mechanisms, Epidemiology, and Treatment. *Mayo Clin Proc* 2016; **91**: 955–70.
- 6 Haibach JP, Beehler GP, Dollar KM, Finnell DS. Moving toward integrated behavioral intervention for treating multimorbidity among chronic pain, depression, and substance-use disorders in primary care. *Med Care* 2014; **52**: 322–7.
- 7 Treede R-D, Rief W, Barke A, *et al*. Chronic pain as a symptom or a disease: the IASP Classification of Chronic Pain for the International Classification of Diseases (ICD-11). *Pain* 2019; **160**: 19–27.
- 8 Australian Institute of Health and Welfare. Chronic Pain in Australia. Australian Government, 2020.

- 9 Deloitte Access Economics. The cost of pain in Australia. 2019.
- 10 Gaskin DJ, Richard P, Walburn J. The Economical Impact of Pain. In: Saba L, ed. *Neuroimaging of Pain*. Cham: Springer International Publishing, 2017: 1–17.
- 11 Lin SX, Patel K, Younge RG. Opioid Medications Prescribing and the Pain-Depression Dyad in Primary Care: Analysis of 2014–2015 National Ambulatory Medical Care Survey (NAMCS) Data. *The Journal of the American Board of Family Medicine*. 2019; **32**: 614–8.
- 12 Zis P, Daskalaki A, Bountouni I, Sykioti P, Varrassi G, Paladini A. Depression and chronic pain in the elderly: links and management challenges. *Clin Interv Aging* 2017; **12**: 709–20.
- 13 DeVeugh-Geiss AM, West SL, Miller WC, Sleath B, Gaynes BN, Kroenke K. The adverse effects of comorbid pain on depression outcomes in primary care patients: results from the ARTIST trial. *Pain Med* 2010; **11**: 732–41.
- 14 Johnston KJA, Adams MJ, Nicholl BI, *et al*. Genome-wide association study of multisite chronic pain in UK Biobank. *PLoS Genet* 2019; **15**: e1008164.
- 15 Zhou W, Jin Y, Meng Q, *et al*. A neural circuit for comorbid depressive symptoms in chronic pain. *Nat Neurosci* 2019; **22**: 1649–58.
- 16 Kremer M, Becker LJ, Barrot M, Yalcin I. How to study anxiety and depression in rodent models of chronic pain? *Eur J Neurosci* 2020; published online Jan 26. DOI:10.1111/ejn.14686.
- 17 Han C, Pae C-U. Pain and depression: a neurobiological perspective of their relationship. *Psychiatry Investig* 2015; **12**: 1–8.
- 18 IsHak WW, Wen RY, Naghdechi L, *et al*. Pain and Depression: A Systematic Review. *Harv Rev Psychiatry* 2018; **26**: 352–63.
- 19 Riediger C, Schuster T, Barlinn K, Maier S, Weitz J, Siepmann T. Adverse Effects of Antidepressants for Chronic Pain: A Systematic Review and Meta-analysis. *Front Neurol* 2017; **8**: 307.
- 20 Gebhardt S, Heinzl-Gutenbrunner M, König U. Pain Relief in Depressive Disorders: A Meta-Analysis of the Effects of Antidepressants. *J Clin Psychopharmacol* 2016; **36**: 658–68.
- 21 Du L, Luo S, Liu G, Wang H, Zheng L, Zhang Y. The 100 Top-Cited Studies About Pain and Depression. *Front Psychol* 2019; **10**: 3072.
- 22 Davis KAS, Farooq S, Hayes JF, *et al*. Pharmacoepidemiology research: delivering evidence about drug safety and effectiveness in mental health. *Lancet Psychiatry* 2020; **7**: 363–70.
- 23 Byrne EM, Kirk KM, Medland SE, *et al*. The Australian Genetics of Depression Study: Study Description and Sample Characteristics. *bioRxiv* 2019.
- 24 Lupton MK, Robinson GA, Adam RJ, *et al*. A prospective cohort study of prodromal

Alzheimer's disease: Prospective Imaging Study of Ageing: Genes, Brain and Behaviour (PISA). *medRxiv* 2020; : 2020.05.04.20091140.

- 25 Benyamin B, Ferreira MAR, Willemsen G, *et al.* Common variants in TMPRSS6 are associated with iron status and erythrocyte volume. *Nat Genet* 2009; **41**: 1173–5.
- 26 Heath AC, Whitfield JB, Martin NG, *et al.* A quantitative-trait genome-wide association study of alcoholism risk in the community: findings and implications. *Biol Psychiatry* 2011; **70**: 513–8.
- 27 Thaler KJ, Morgan LC, Van Noord M, *et al.* Comparative effectiveness of second-generation antidepressants for accompanying anxiety, insomnia, and pain in depressed patients: a systematic review. *Depress Anxiety* 2012; **29**: 495–505.
- 28 Holmes A, Christelis N, Arnold C. Depression and chronic pain. *Med J Aust* 2013; **199**: S17–20.
- 29 Mills SEE, Nicolson KP, Smith BH. Chronic pain: a review of its epidemiology and associated factors in population-based studies. *Br J Anaesth* 2019; **123**: e273–83.
- 30 Bierman A, Lee Y. Chronic Pain and Psychological Distress Among Older Adults: A National Longitudinal Study. *Res Aging* 2018; **40**: 432–55.
- 31 Goosby BJ. Early life course pathways of adult depression and chronic pain. *J Health Soc Behav* 2013; **54**: 75–91.
- 32 Van Hecke O, Torrance N, Smith BH. Chronic pain epidemiology and its clinical relevance. *Br J Anaesth* 2013; **111**: 13–8.
- 33 Racine M. Chronic pain and suicide risk: A comprehensive review. *Prog Neuropsychopharmacol Biol Psychiatry* 2018; **87**: 269–80.
- 34 Edwards RR, Smith MT, Kudel I, Haythornthwaite J. Pain-related catastrophizing as a risk factor for suicidal ideation in chronic pain. *Pain* 2006; **126**: 272–9.
- 35 Tang NKY, Beckwith P, Ashworth P. Mental Defeat Is Associated With Suicide Intent in Patients With Chronic Pain. *Clin J Pain* 2016; **32**: 411–9.
- 36 Breslau N, Schultz L, Lipton R, Peterson E, Welch KMA. Migraine headaches and suicide attempt. *Headache* 2012; **52**: 723–31.
- 37 Handley T, Rich J, Davies K, Lewin T, Kelly B. The Challenges of Predicting Suicidal Thoughts and Behaviours in a Sample of Rural Australians with Depression. *Int J Environ Res Public Health* 2018; **15**. DOI:10.3390/ijerph15050928.
- 38 Barrett K, Chang YP. Behavioral Interventions Targeting Chronic Pain, Depression, and Substance Use Disorder in Primary Care. *J Nurs Scholarsh* 2016; **48**: 345–53.
- 39 Urits I, Peck J, Orhurhu MS, *et al.* Off-label Antidepressant Use for Treatment and Management of Chronic Pain: Evolving Understanding and Comprehensive Review. *Curr Pain Headache Rep* 2019; **23**: 66.
- 40 Cipriani A, Furukawa TA, Salanti G, *et al.* Comparative Efficacy and Acceptability of

21 Antidepressant Drugs for the Acute Treatment of Adults With Major Depressive Disorder: A Systematic Review and Network Meta-Analysis. *Focus* 2018; **16**: 420–9.

TABLES AND FIGURES

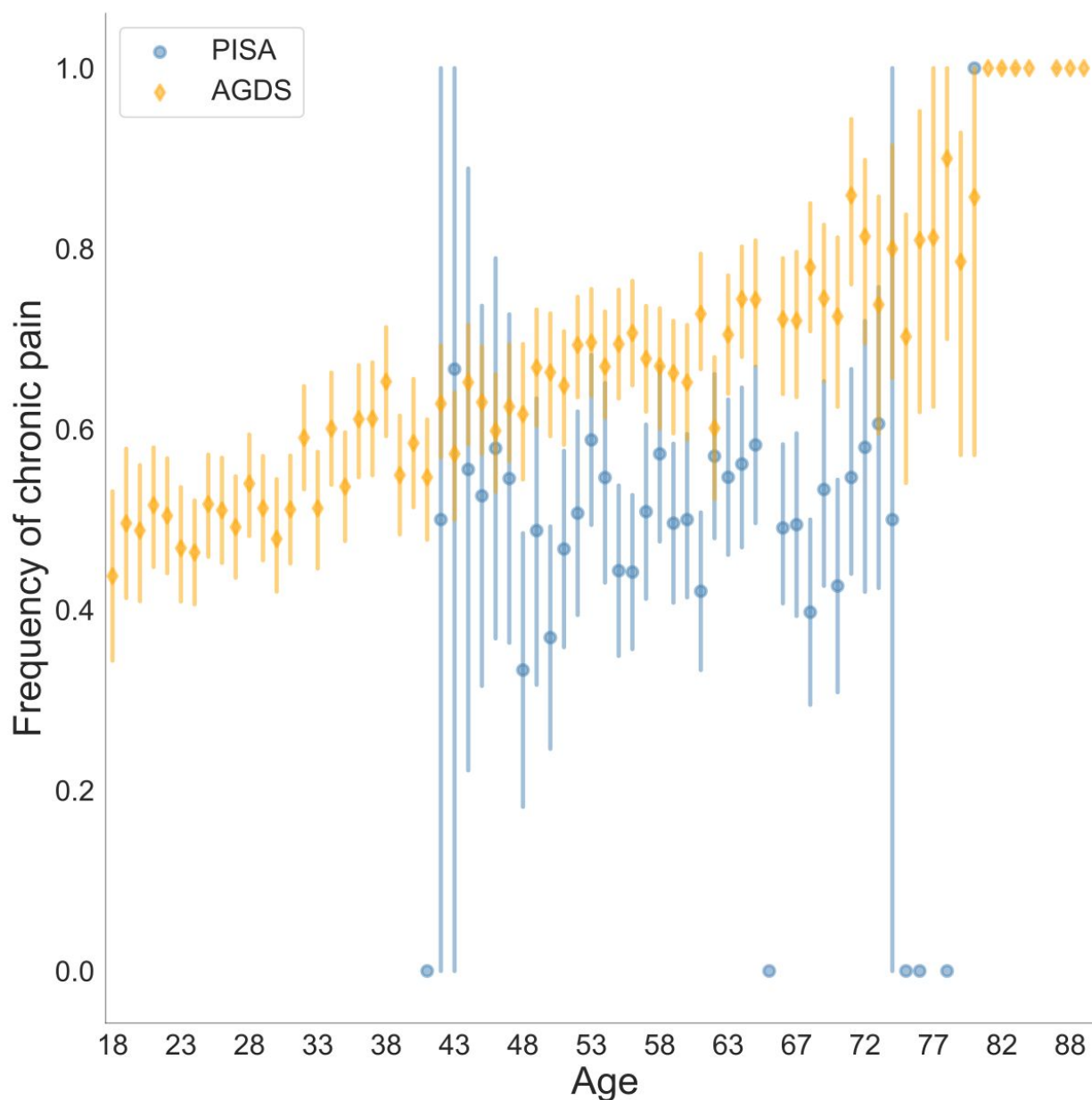


Figure 1. Prevalence of chronic pain stratified by age and cohort (AGDS vs PISA). Self-reported chronic pain was significantly higher in the AGDS cohort (N=6,895/11,370) compared with the PISA cohort (N=1,248/2,469). Both cohorts are population-based samples with AGDS being enriched for depression. For statistical significance results see Supplementary Table 1.

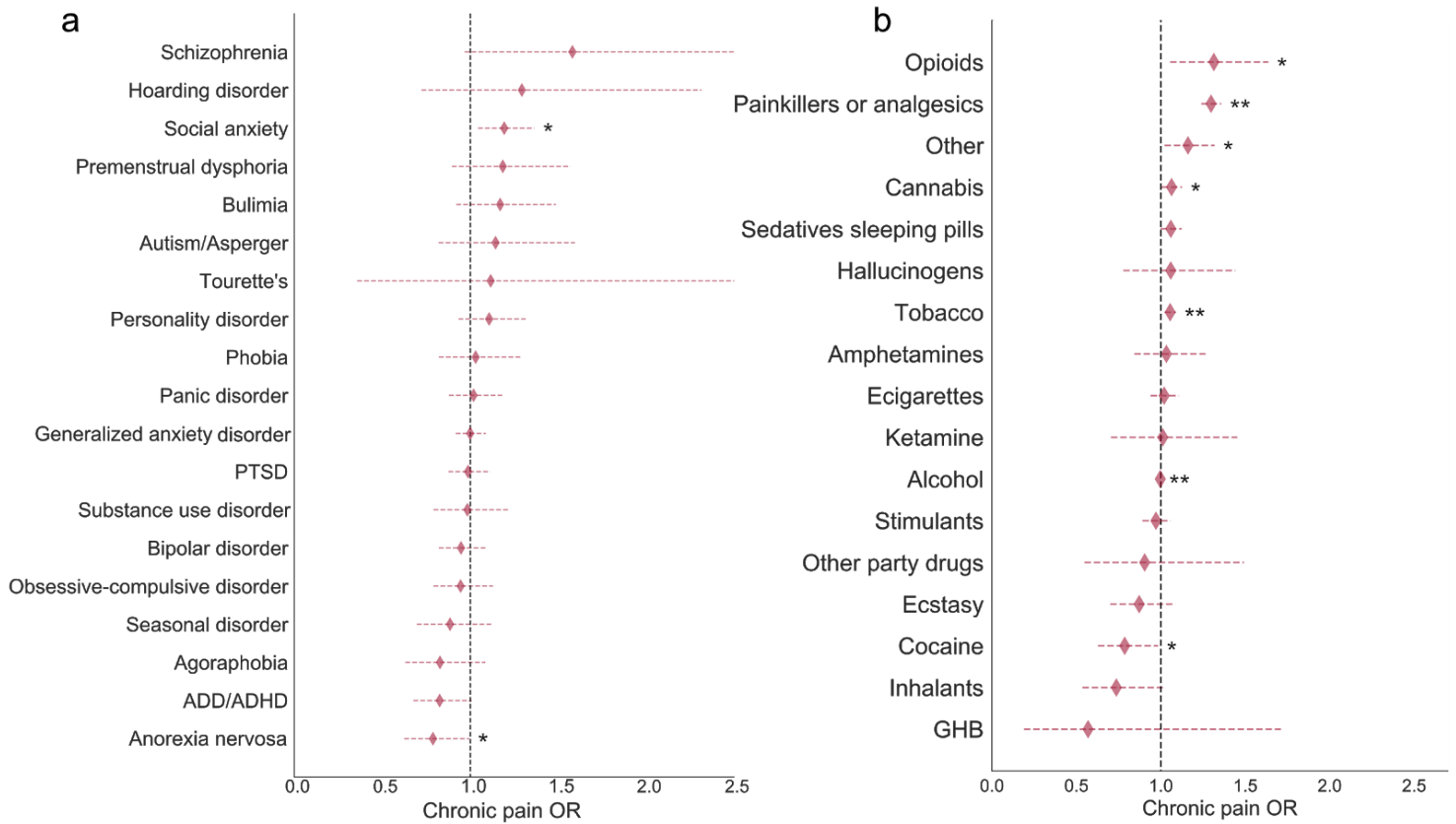


Figure 2. Comorbidities and substance use associations with chronic pain in AGDS cohort

Forest plots depict the chronic pain odds ratios (ORs) for (a) comorbid disorders and (b) recent substance use during the past three months. Chronic pain was significantly associated with increased use of alcohol, tobacco and painkiller misuse including opioids. Diamonds represent ORs and horizontal lines depict 95% CI. ORs were estimated from a multivariate logistic regression accounting for all relevant covariates (see Methods). *p < 0.05; **p < 0.05 after Bonferroni correction for multiple testing (AGDS data only).

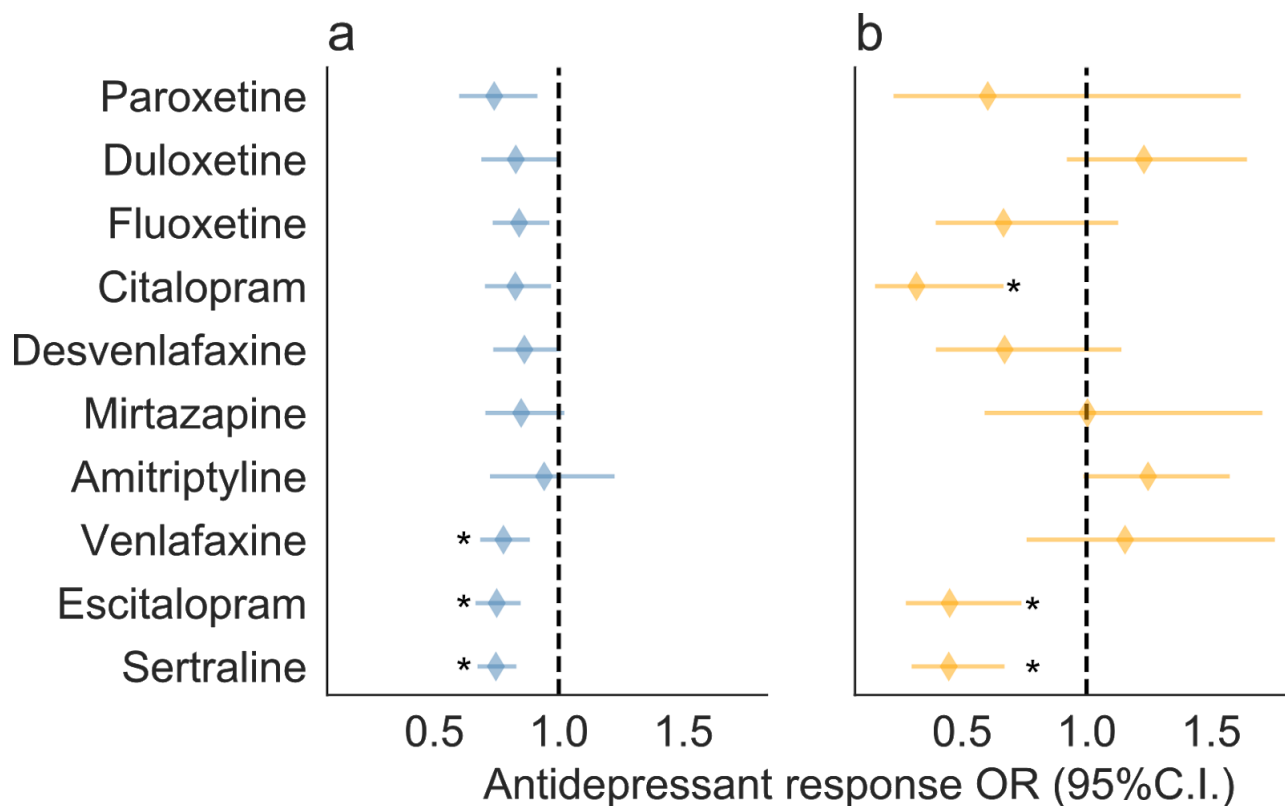
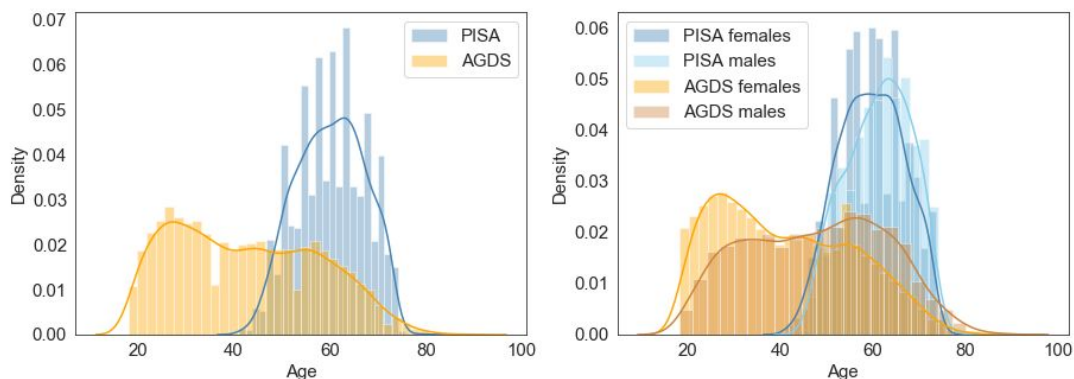


Figure 3. Effect of chronic pain on antidepressant effectiveness in AGDS cohort

Forest plots depicting the results from a cumulative link logistic regression predicting antidepressant treatment response using (a) self-reported chronic pain or (b) self-reported prescription for chronic pain as predictors, while adjusting for the effects of sex and age started taking the antidepressant. *Statistically significant after Bonferroni multiple testing correction ($p < 0.005$; AGDS data only). Further details are in Supplementary Figure 4 and Supplementary Tables 4 and 5.

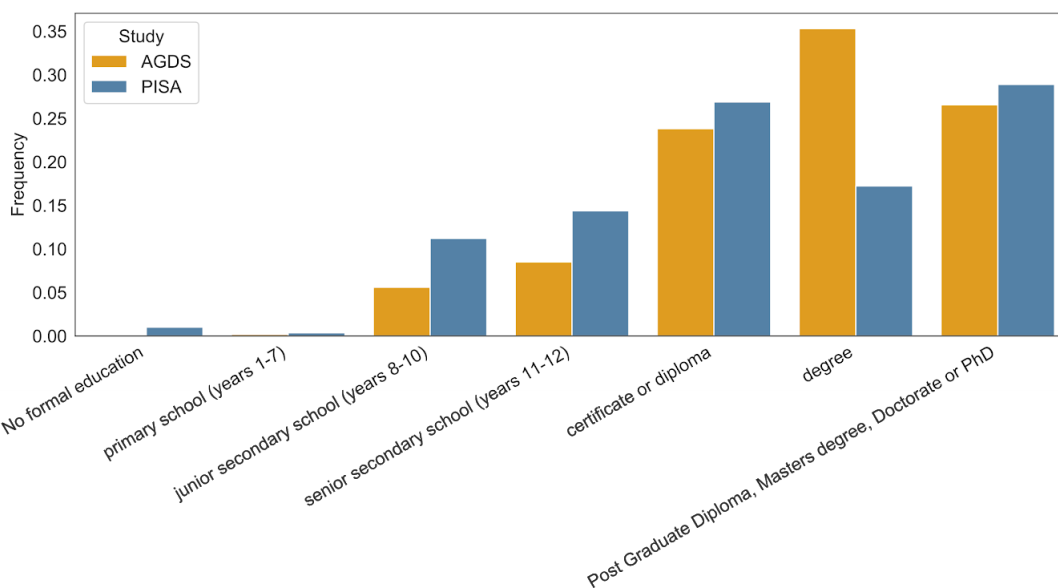
Table 1. Chronic pain prevalence in AGDS and PISA cohorts		
	Cases	Controls
AGDS (all depression)		
Sample size N (%)	6,895 (60.6%)	4,475 (39.4%)
Female N (%)	5,215 (75%)	3,402 (75%)
Age mean (sd)*	45 (15.1)	40 (14.3)
PISA		
Sample size N (%)	1,248 (50%)	1,221 (50%)
Depression* N (%)	119 (10%)	68 (6%)
Female N (%)	882 (71%)	854 (70%)
Age mean (sd)	60 (6.8)	60 (6.9)
Cases: participants reporting chronic pain Controls: participants reporting no chronic pain *p<0.05 two-sample t-test or χ^2 test		

SUPPLEMENTARY FIGURES



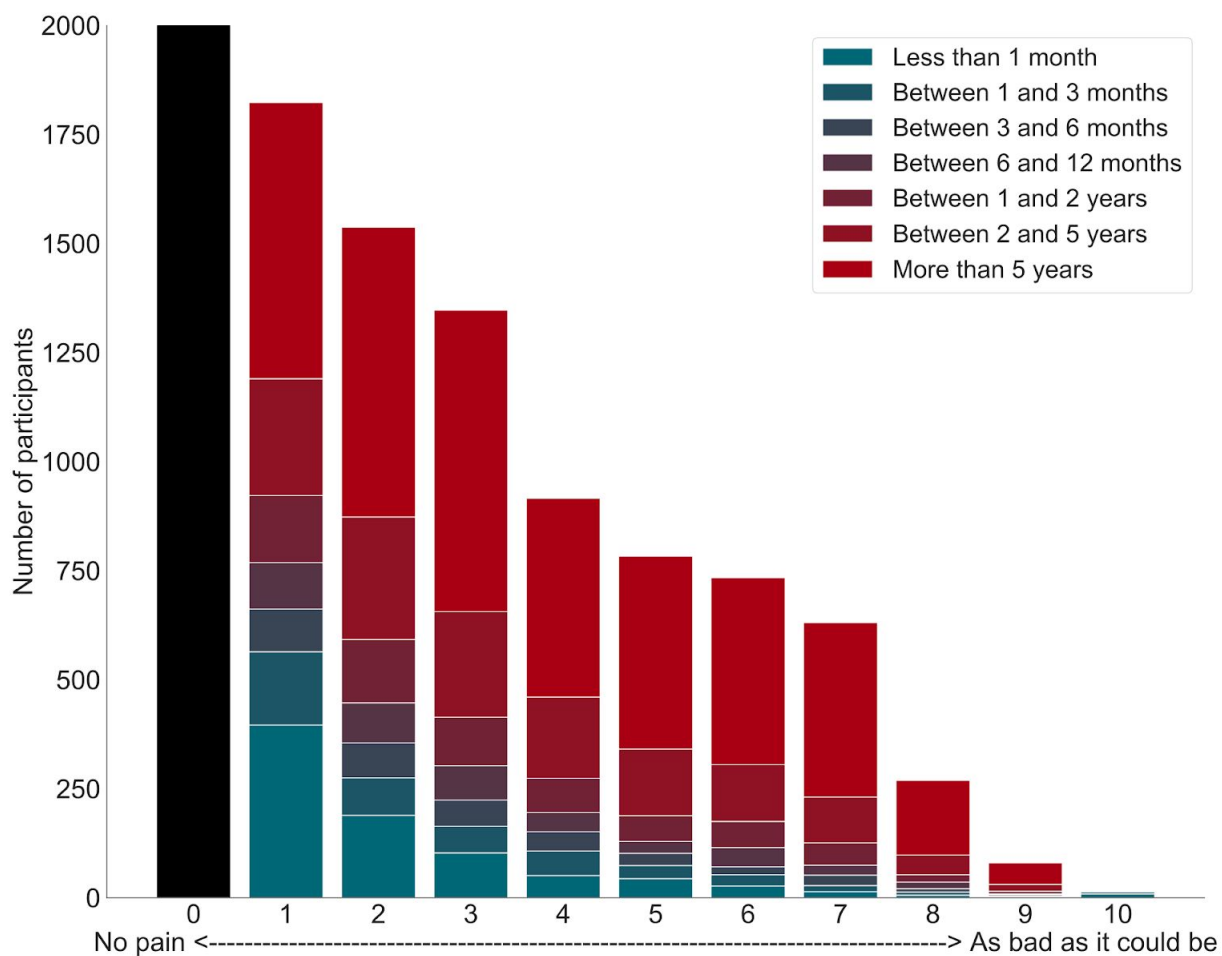
Supplementary Figure 1. Age and sex composition of AGDS and PISA cohorts

Histograms with kernel density plots showing the distribution of ages for AGDS and PISA cohorts (left) and their sex-stratified versions (right). Note that the PISA cohort is on average older at the time the participants responded to the questionnaire, but present lower rates of chronic pain on average than the AGDS (depression-enriched) cohort.



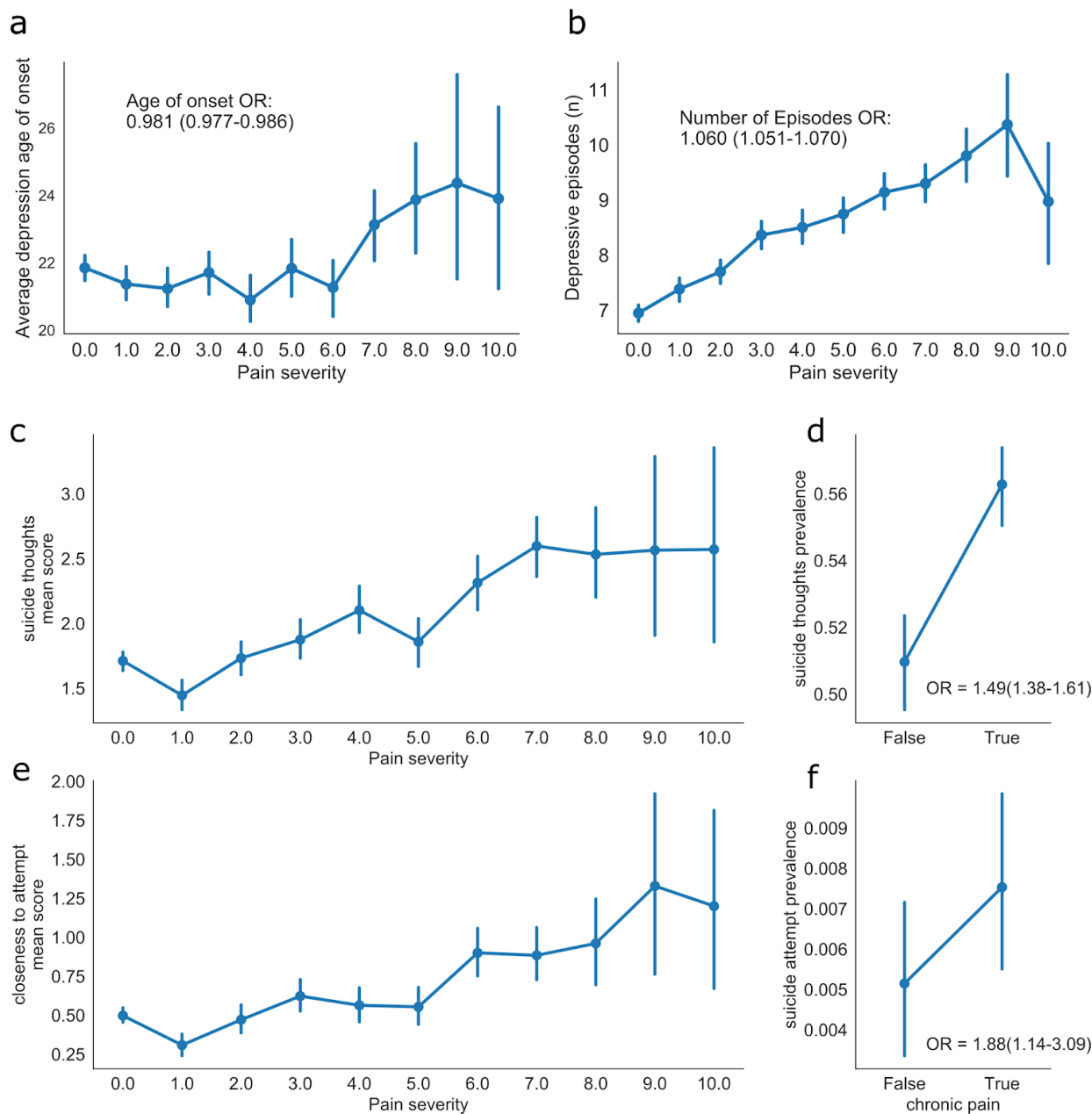
Supplementary Figure 2. Significant difference in educational attainment between AGDS and PISA cohorts

Barplots showing the frequency of educational attainment for the AGDS and PISA cohorts. The difference is statistically significant (χ^2 test $p < E-100$).



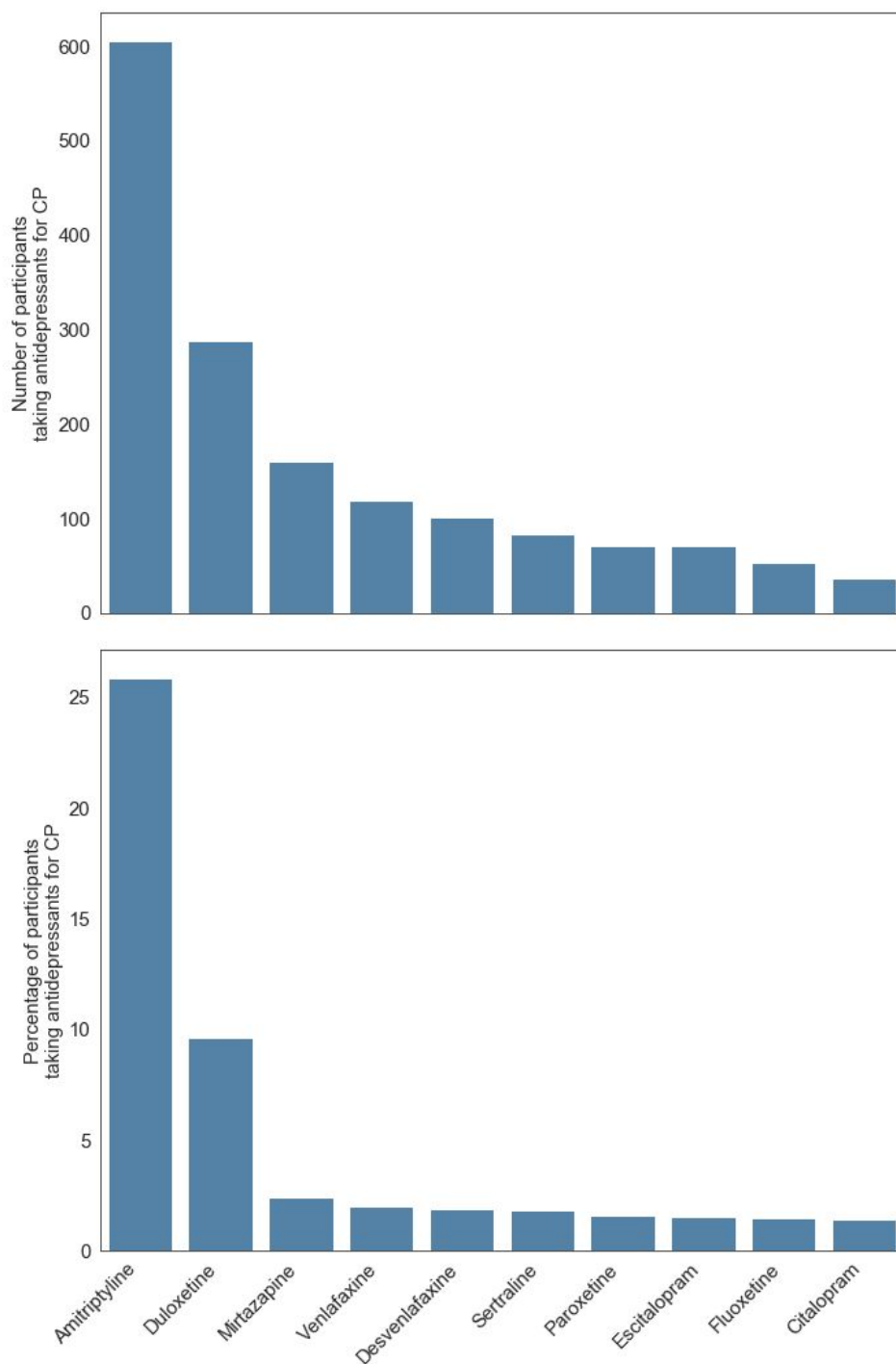
Supplementary Figure 3. Positive association between pain intensity and pain duration in AGDS cohort

Bar plots illustrate average pain intensity (x-axis) stratified by pain duration, with a strong positive relationship found between them ($p=5.5e-106$ linear regression; AGDS data only).



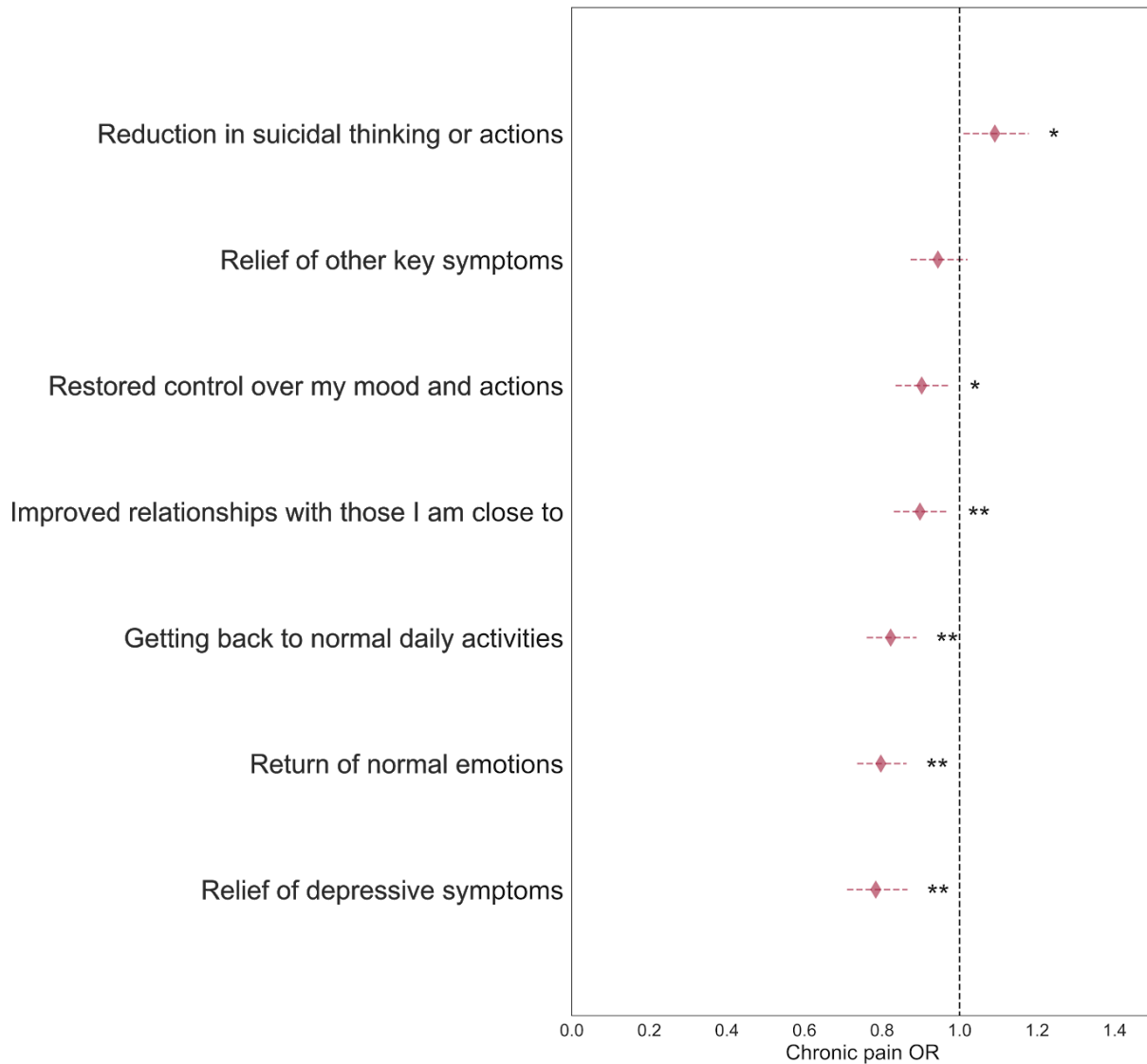
Supplementary Figure 4. Positive association between chronic pain severity (intensity), depression (number of episodes) and suicidality in AGDS cohort

Point plots comparing chronic pain severity with: (a) average age of onset, (b) average number of depressive episodes, (c) average suicide thoughts score or (e) suicide attempt score (e). Differences in the prevalence of (d) recent suicide thoughts and (f) recent suicide attempt are also shown. Error bars denote 95% confidence intervals (AGDS data only).

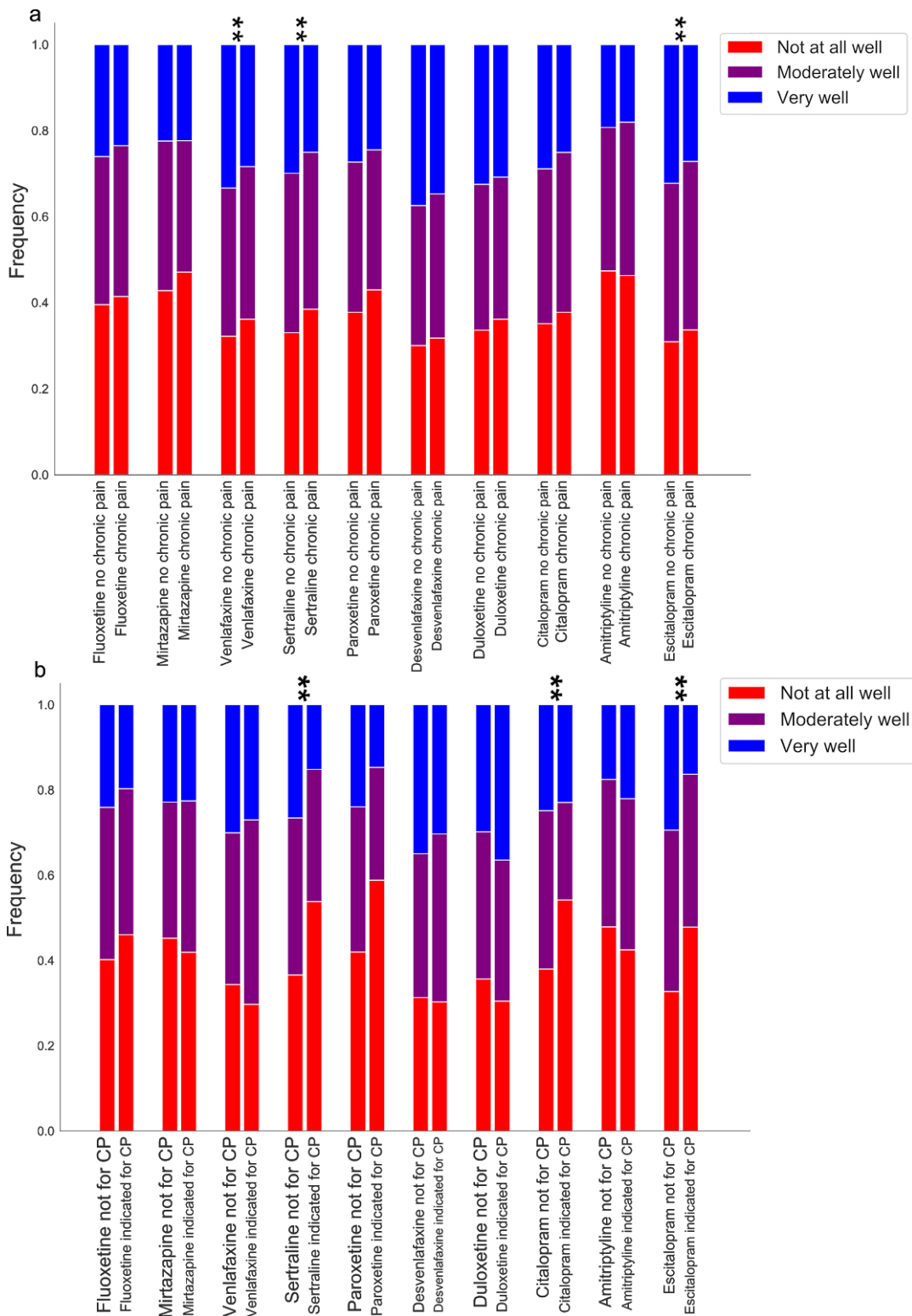


Supplementary Figure 5. Antidepressant intake by chronic pain participants

Barplots showing the percentage (number) of participants with comorbid chronic pain (CP) and depression taking ten commonly used antidepressants in Australia (AGDS data only).



Supplementary Figure 6. Reduced functional benefits associated with antidepressant use in participants with comorbid chronic pain and depression. This forest plot shows the results from logistic regressions to quantify the correlation between chronic pain and self-reported aspects of antidepressant use. Diamonds represent odds ratios (ORs) and horizontal lines depict 95% confidence intervals. * $p < 0.05$; ** $p < 0.05$ after correction for seven tests (AGDS data only).



Supplementary Figure 7. Association between antidepressant response, participants with chronic pain and antidepressant prescription for chronic pain
 Bar plots depicting the average antidepressant response score across antidepressants stratified by whether the participants reported chronic pain, regardless of (a) the clinical indication for the antidepressant, or (b) whether the antidepressant was prescribed for chronic pain. Further details including p-values from a cumulative link logistic regression are in Supplementary Tables 4 and 5 (AGDS data only).

SUPPLEMENTARY TABLES

Supplementary Table 1. Effect of demographic variables, depression and cohort on chronic pain		
	OR (95%CI)	p-value
Cohort (AGDS)	1.31 (0.96–1.77)	0.086
Sex (female)	1.16 (1.07–1.26)	0.0003
Depression	1.95 (1.42–2.66)	2.80E-05
Education	0.887 (0.86–0.91)	1.00E-14
Age	1.02 (1.02–1.03)	6.90E-74
<p>These results are from a multivariate logistic regression on chronic pain. Fully adjusted ORs are shown. Cohort represents a categorical variable of whether participants were from the AGDS cohort compared to the PISA cohort. Note the lack of association with cohort due to adjustment for depression.</p>		

Supplementary Table 2. Psychiatric comorbidities of comorbid chronic pain and depression		
Diagnosis	OR (95% CI)	p-value
Bipolar disorder	0.947 (0.82–1.09)	0.4570
Premenstrual dysphoria	1.19 (0.90–1.57)	0.2355
Schizophrenia	1.58 (0.97–2.58)	0.0675
Anorexia nervosa	0.788 (0.62–0.99)	0.0443
Bulimia	1.17 (0.92–1.49)	0.2003
ADD/ADHD	0.826 (0.68–1.01)	0.0602
Autism/Asperger	1.14 (0.82–1.60)	0.4294
Tourette's	1.12 (0.36–3.49)	0.8502
Generalized anxiety	0.999 (0.92–1.09)	0.9889
Panic disorder	1.02 (0.88–1.18)	0.8050
Obsessive-compulsive disorder	0.945 (0.79–1.13)	0.5344
Hoarding disorder	1.29 (0.72–2.32)	0.3870
PTSD	0.987 (0.88–1.11)	0.8335
Phobia	1.03 (0.82–1.29)	0.7949
Seasonal disorder	0.885 (0.70–1.12)	0.3179
Social anxiety	1.19 (1.04–1.36)	0.0096
Agoraphobia	0.828 (0.63–1.09)	0.1724
Personality disorder	1.11 (0.93–1.32)	0.2440
Substance use	0.984 (0.79–1.22)	0.8814
Multivariate logistic regression assessing chronic pain comorbidities. Multiple testing corrected significance threshold: $p < 0.0026$		

Supplementary Table 3. Recent substance use and chronic pain correlations

Substance	CP OR (95% CI)	p-value
GHB	0.569 (0.19–1.71)	0.316
Inhalants	0.736 (0.54–1.01)	0.059
Cocaine	0.786 (0.63–0.98)	0.036
Ecstasy	0.872 (0.70–1.09)	0.219
Other party drugs	0.904 (0.55–1.49)	0.694
Stimulants	0.971 (0.89–1.06)	0.499
Alcohol	0.997 (0.995–0.999)	0.001
Ketamine	1.01 (0.70–1.45)	0.951
Amphetamines	1.02 (0.94–1.11)	0.642
Electronic cigarettes	1.03 (0.84–1.27)	0.756
Tobacco	1.05 (1.02–1.09)	0.001
Sedatives sleeping pills	1.06 (0.78–1.44)	0.718
Cannabis	1.06 (1.00–1.12)	0.058
Hallucinogens	1.06 (1.00–1.13)	0.034
Other	1.16 (1.02–1.32)	0.022
Painkillers or analgesics	1.3 (1.24–1.36)	7.2e-29
Opioids	1.31 (1.05–1.64)	0.015

Alcohol use was measured as the number of days drinking three or more standard drinks in the past three months. All other variables were measured on a scale ranging from never using to daily or almost daily over the past three months.

Supplementary Table 4. Percentage of chronic pain participants with an antidepressant indication for chronic pain

Antidepressant	%
Sertraline	2.825191
Escitalopram	2.624142
Venlafaxine	3.27529
Amitriptyline	31.051753
Mirtazapine	4.369332
Desvenlafaxine	3.310811
Citalopram	2.178091
Fluoxetine	2.46397
Duloxetine	15.318818
Paroxetine	2.108434

Supplementary Table 5. Functional benefits associated with antidepressant use in participants with chronic pain

Self-reported benefit	OR (95% C.I.)	p-value
Relief of depressive symptoms	0.78 (0.71–0.87)	1.5E-06
Return of normal emotions	0.80 (0.74–0.86)	2.6E-08
Getting back to normal daily activities	0.82 (0.76–0.89)	9.2E-07
Improved relationships with those I am close to	0.90 (0.83–0.97)	0.01
Restored control over my mood and actions	0.90 (0.83–0.98)	0.01
Relief of other key symptoms	0.94 (0.87–1.02)	0.15
Reduction in suicidal thinking or actions	1.09 (1.01–1.18)	0.03

Supplementary Table 6. Effect of chronic pain on antidepressant response

Antidepressant	N	beta	S.E.	p-value
Sertraline*	5,189	-0.29132	0.053	4.42E-08
Escitalopram*	3,877	-0.28702	0.061	2.96E-06
Venlafaxine*	3,540	-0.25168	0.065	1.13E-04
Amitriptyline	1,293	-0.06086	0.134	0.650
Mirtazapine	1,718	-0.16407	9.48E-02	0.083
Desvenlafaxine	2,262	-0.14898	0.080	0.063
Citalopram	2,236	-0.19203	0.082	0.019
Fluoxetine	3,178	-0.1739	0.069	0.012
Duloxetine	1,776	-0.18966	0.093	0.042
Paroxetine	1,361	-0.30056	0.107	0.005

*p<0.05 after Bonferroni multiple testing correction for 10 variables.

Supplementary Table 7. Effect of chronic pain indication on antidepressant treatment response

Antidepressant	N	beta	S.E.	p-value
Sertraline*	5,189	-0.80599	0.207	1.00E-04
Escitalopram*	3,877	-0.79848	0.253	0.002
Venlafaxine	3,540	0.143459	0.214	0.503
Amitriptyline	1,293	0.220429	0.119	0.064
Mirtazapine	1,718	0.003402	0.271	0.990
Desvenlafaxine	2,262	-0.39922	0.270	0.140
Citalopram*	2,236	-1.14947	0.379	0.002
Fluoxetine	3,178	-0.40595	0.268	0.130
Duloxetine	1,776	0.2071	0.148	0.161
Paroxetine	1,361	-0.50542	0.503	0.315

*p<0.05 after Bonferroni multiple testing correction for 10 variables.

RESEARCH IN CONTEXT

Evidence before this study

Depression is a highly heterogeneous condition. A common cause of this heterogeneity is comorbidity with other psychiatric and physical diseases. The association between comorbid chronic pain and depression with outcomes such as suicidality and treatment response have been suggested. However, clinically useful findings and recommendations regarding treatment are lacking. Pharmacoepidemiological approaches have been proposed as a new strategy to address the current knowledge gaps and enormous unmet clinical need in comorbid chronic pain and depression populations.

Added value of this study

We examined a large cohort of Australian adults and demonstrated evidence for an increased risk between depression and chronic pain. An overall poorer prognosis including higher suicidality, substance use and lower treatment benefits was associated with comorbid chronic pain and depression. Notably, our findings indicate specific antidepressants have lower effectiveness and generally reduced functional benefits for patients with chronic pain.

Implications of all available evidence

The available evidence indicates comorbidity with chronic pain is a significant source of depression heterogeneity. The controversies underlying several failed antidepressant randomised clinical trials may therefore be due (in part) to not accounting for this common comorbidity. Our results can be immediately implemented in designing more targeted interventional trials to improve treatment guidelines and patient outcomes..