

**Ethnics and economics in COVID-19: Meta-regression of data from countries in
the New York metropolitan area**

**Hisato Takagi, MD, PhD, Toshiki Kuno, MD, PhD, Yujiro Yokoyama, MD, Hiroki
Ueyama, MD, Takuya Matsushiro, MD, Yosuke Hari, MD, Tomo Ando, MD**

Author Affiliations: Shizuoka Medical Center, Shizuoka, Japan, Kitasato University School of Medicine, Sagamihara, Japan (Takagi, Matsushiro, Hari), Mount Sinai Beth Israel Medical Center, New York, New York (Kuno, Ueyama), Easton Hospital, Easton, Pennsylvania (Yokoyama), and New York Presbyterian Hospital/Columbia University Medical Center, New York, New York (Ando).

Corresponding Authors: Hisato Takagi, MD, PhD, Department of Cardiovascular Surgery, Shizuoka Medical Center, 762-1 Nagasawa, Shimizu-cho, Sunto-gun, Shizuoka 411-8611, Japan (kfgth973@ybb.ne.jp).

Conflict of Interest Disclosures: None reported.

Abstract

Ethnicity and economics may affect prevalence and case fatality of Coronavirus disease 2019 (COVID-19). To determine whether COVID-19 prevalence and fatality are modulated by ethnicity and economics, meta-regression of data from the countries in the New York metropolitan area were herein conducted. We selected 31 countries in the New York metropolitan area. 1) Prevalence and case-fatality rates of confirmed COVID-19 cases on May 20, 2020 and 2) income and poverty estimates were obtained in each country. We performed random-effects meta-regression using OpenMetaAnalys. The covariates included 1) black (%), 2) Hispanic or Latino (%), 3) poverty rates (%), and 4) median household income (\$). Statistically significant ($P < .05$) covariates in the univariable model were together entered into the multivariable model. A slope (coefficient) of the univariable meta-regression line for COVID-19 prevalence was not significant for household income ($P = .639$), whereas the coefficient was significantly positive for black (coefficient, 0.021; $P = .015$), Hispanic/Latino (0.033; $P < .001$), and poverty (0.039; $P = .02$), which indicated that COVID-19 prevalence increased significantly as black, Hispanic/Latino, and poverty increased. The multivariable model revealed that the slope was significantly positive for only Hispanic/Latino ($P < .001$). The coefficient in the univariable model for COVID-19 fatality, however, was not significant for all the covariate. In conclusion, black, Hispanic/Latino, and poverty (not household income), especially Hispanic/Latino independently, may be associated with COVID-19 prevalence. There may be no association of black, Hispanic/Latino, poverty, and household income with COVID-19 fatality.

Text

Introduction

"New York City residents from low-income communities have tested positive for COVID-19 [Coronavirus disease 2019] antibodies at a higher-than-average rate, underscoring the disproportionate impact of the disease on people of color, Governor Andrew Cuomo said on Wednesday [May 20, 2020] (<https://www.reuters.com/article/us-health-coronavirus-usa-new-york/new-york-citys-low-income-minority-areas-hit-hardest-by-covid-19-cuomo-says-idUSKBN22W2IG>)." Ethnicity and economics may affect prevalence and case fatality of COVID-19. To determine whether COVID-19 prevalence and fatality are modulated by ethnicity and economics, meta-regression of data from the countries in the New York metropolitan area were herein conducted.

Methods

We selected 31 countries in the New York metropolitan area, i.e. the New York-Newark, NY-NJ-CT-PA Combined Statistical Area (<https://www.whitehouse.gov/wp-content/uploads/2020/03/Bulletin-20-01.pdf>). 1) Prevalence and case-fatality rates of confirmed COVID-19 cases on May 20, 2020 from the Johns Hopkins Coronavirus Resource Center (<https://coronavirus.jhu.edu/us-map>) and 2) income and poverty estimates from the U.S. Census Bureau (https://www.census.gov/data-tools/demo/saiper/#/?map_geoSelector=aa_c) were obtained in each country (**Table**). We performed random-effects meta-regression using OpenMetaAnalyst (<http://www.cebm.brown.edu/openmeta/index.html>). A meta-regression graph depicted COVID-19 prevalence or fatality (plotted as logarithm transformed prevalence

or fatality on the y-axis) as a function of a given covariate (plotted on the x-axis). The covariates included 1) black (%), 2) Hispanic or Latino (%), 3) poverty rates (%), and 4) median household income (\$). Statistically significant ($P < .05$) covariates in the univariable model were together entered into the multivariable model.

Results

Results of the meta-regression were summarized in **Supplementary Table**. A slope (coefficient) of the univariable meta-regression line for COVID-19 prevalence was not significant for household income ($P = .639$), whereas the coefficient was significantly positive for black (coefficient, 0.021; $P = .015$; **Figure, part A**), Hispanic/Latino (coefficient, 0.033; $P < .001$; **Figure, part B**), and poverty (coefficient, 0.039; $P = .026$; **Figure, part C**), which indicated that COVID-19 prevalence increased significantly as black, Hispanic/Latino, and poverty increased. The multivariable model revealed that the slope was significantly positive for only Hispanic/Latino (coefficient, 0.035; $P < .001$). The coefficient in the univariable model for COVID-19 fatality, however, was not significant for all the covariates (**Supplementary Table**).

Discussion

The present meta-regression suggests that black, Hispanic/Latino, and poverty (not household income) may be positively associated with COVID-19 prevalence. Especially, Hispanic/Latino may be "independently" associated with COVID-19 prevalence. According to the most recent (19 May, 2020) data of the NYC Health, the age-adjusted case/death rate per 100,000 people was higher (approximately 1.5/2.0-fold for the case/death rate) in Hispanic/Latino (1307/217 of the case/death rate) and

black/African-American (1470/209 of the case/death rate) than in White (934/104 of the case/death rate).¹ The case/death rate per 100,000 people was also higher (approximately 1.5/2.3-fold for the case/death rate) in very-high poverty (2533/238 of the case/death rate) than in low poverty (1714/102 of the case/death rate).¹ These findings may partially strengthen the present results. It is unclear 1) why Hispanic/Latino (neither black nor poverty) is independently associated with COVID-19 prevalence or 2) why none of black, Hispanic/Latino, and poverty is associated with COVID-19 fatality, which demonstrated in the present study. Disparity of racial and ethnic health should be identified and addressed in the pandemic of COVID-19.² Furthermore, long-term legislation to improve social welfare would be introduced to address vulnerability in subjects with the most economical disadvantage.³

In conclusion, black, Hispanic/Latino, and poverty (not household income), especially Hispanic/Latino independently, may be associated with COVID-19 prevalence. There may be no association of black, Hispanic/Latino, poverty, and household income with COVID-19 fatality, which should be confirmed by further large hospital-based studies investigating whether these covariates are associated with COVID-19 fatality.

References

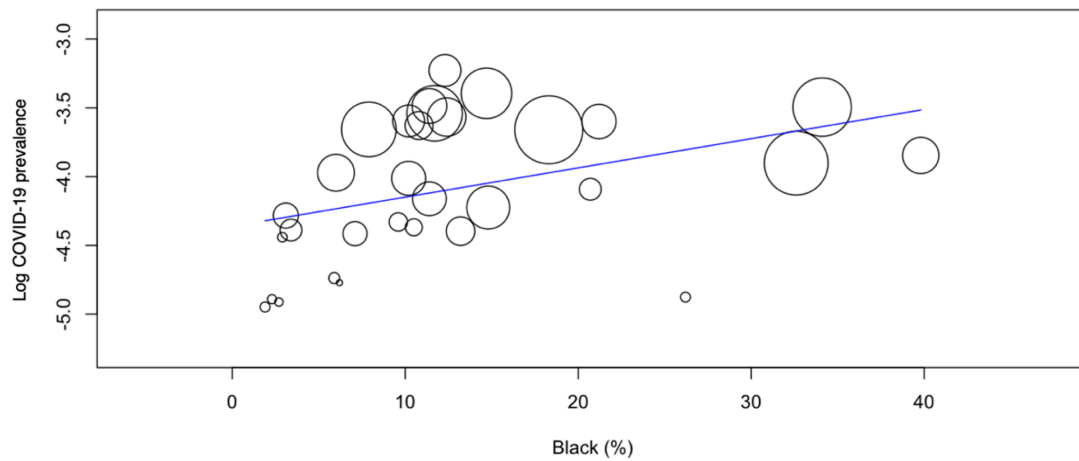
1. NYC Health. Case, Hospitalization and Death Rates. Published 19 May, 2020. Accessed 23 May, 2020. <https://www1.nyc.gov/site/doh/covid/covid-19-data.page>
2. Laurencin CT, McClinton A. The COVID-19 Pandemic: a Call to Action to Identify and Address Racial and Ethnic Disparities. *J Racial Ethn Health Disparities*. 2020;7(3):398-402. doi: 10.1007/s40615-020-00756-0

3. Patel JA, Nielsen FBH, Badiani AA, et al. Poverty, Inequality & COVID-19: The Forgotten Vulnerable. *Public Health*. Published online May 14, 2020. doi: 10.1016/j.puhe.2020.05.006

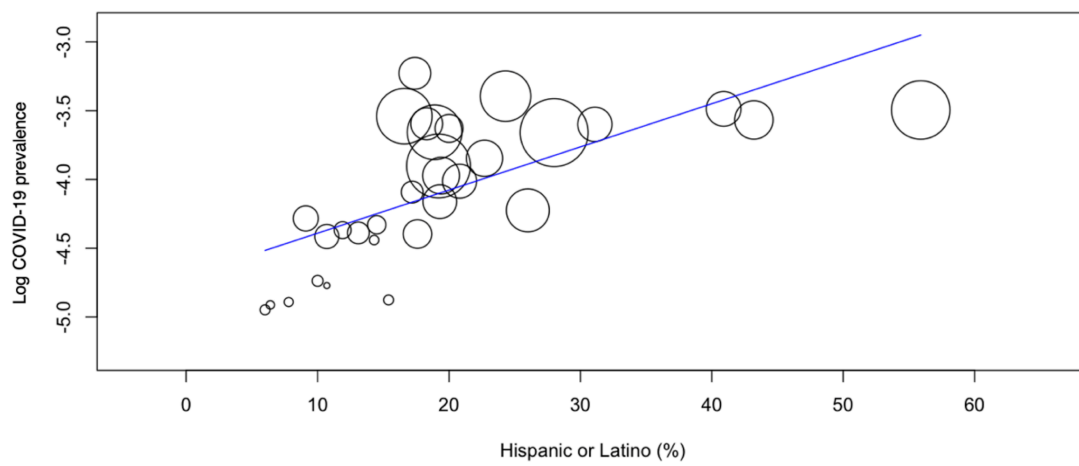
Figure legends

Figure. Meta-Regression Graph Depicting the COVID-19 Prevalence (Plotted as the Logarithm Transformed Prevalence on the Y-Axis) as a Function of a Given Factor (Plotted on the X-Axis)

A



B



C

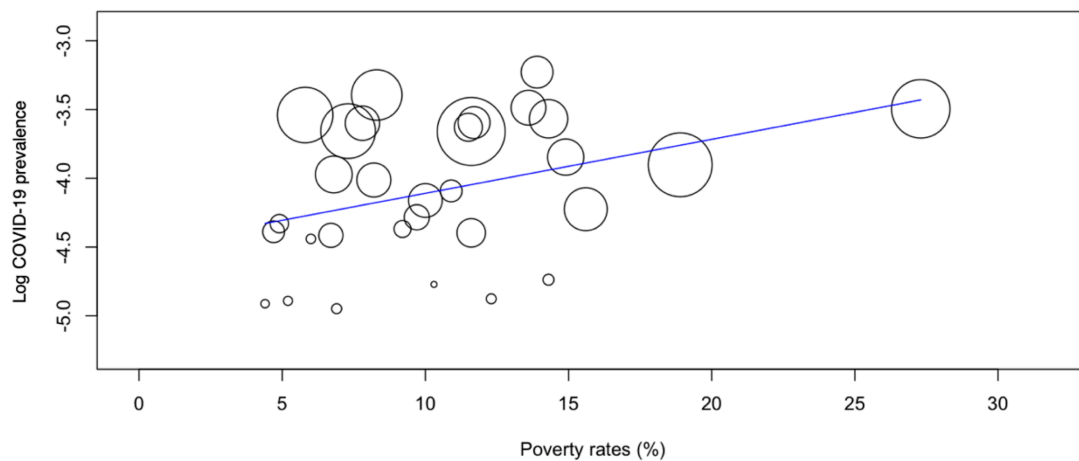


Table. COVID-19 Prevalence/Fatality and Ethnics/Economics in Each Country in the New York Metropolitan Area (New York-Newark, NY-NJ-CT-PA Combined Statistical Area)

New York-Newark, NY-NJ-CT-PA Combined Statistical Area	County, State	Total population (N)	Confirmed cases (N)	Prevalence (%)	Deaths (N)	Case fatality (%)	Black (%)	Hispanic or Latino (%)	Poverty rates (%)	Median household income (\$)	
Division											
Bridgeport-Stamford-Norwalk, CT Metropolitan Statistical Area	Fairfield, CT	944,348	14,719	1.56	1,167	7.93	11.4	19.3	10.0	91,183	
East Stroudsburg, PA Metropolitan Statistical Area	Monroe, PA	167,586	1,278	0.76	93	7.28	26.2	15.4	12.3	63,318	
Kingston, NY Metropolitan Statistical Area	Ulster, NY	179,303	1,571	0.88	69	4.39	5.9	10.0	14.3	63,073	
New Haven-Milford, CT Metropolitan Statistical Area	New Haven, CT	859,339	10,587	1.23	855	8.08	13.2	17.6	11.6	67,720	
New York-Newark-Jersey City, NY-NJ-PA Metropolitan Statistical Area	Nassau County-Suffolk County, NY Metropolitan Division	Nassau, NY	1,356,564	39,368	2.90	2,065	5.25	11.7	16.6	5.8	115,301
	Newark, NJ-PA Metropolitan Division	Suffolk, NY	1,487,901	38,411	2.58	1,791	4.66	7.9	18.9	7.3	100,075
		Essex, NJ	793,555	16,952	2.14	1,571	9.27	39.8	22.7	14.9	62,875
		Hunterdon, NJ	125,051	920	0.74	55	5.98	2.7	6.4	4.4	112,335
		Morris, NJ	494,383	6,139	1.24	581	9.46	3.4	13.1	4.7	112,396
		Sussex, NJ	142,298	1,069	0.75	140	13.10	2.3	7.8	5.2	92,284
		Union, NJ	553,066	15,122	2.73	994	6.57	21.2	31.1	7.8	80,737
		Pike, PA	55,498	470	0.85	18	3.83	6.2	10.7	10.3	62,657
		New Brunswick-Lakewood, NJ Metropolitan Division	Middlesex, NJ	826,698	14,954	1.81	913	6.11	10.2	20.8	8.2
	Monmouth, NJ		623,387	7,541	1.21	531	7.04	7.1	10.7	6.7	99,223
	Ocean, NJ		591,939	8,165	1.38	656	8.03	3.1	9.1	9.7	68,483
	New York-Jersey City-White Plains, NY-NJ Metropolitan Division	Somerset, NJ	330,176	4,349	1.32	384	8.83	9.6	14.5	4.9	119,731
		Bergen, NJ	929,999	17,518	1.88	1,500	8.56	6.0	19.4	6.8	100,181
		Hudson, NJ	668,631	18,880	2.82	1,106	5.86	12.4	43.2	14.3	73,337
		Passaic, NJ	504,041	15,426	3.06	855	5.54	11.4	40.9	13.6	71,959
		Bronx, NY (The Bronx, NYC)	1,437,872	43,652	3.04	3,427	7.85	34.1	55.9	27.3	38,566
		Kings, NY (Brooklyn, NYC)	2,600,747	52,551	2.02	4,922	9.37	32.6	19.2	18.9	60,862
		New York, NY (Manhattan, NYC)	1,632,480	23,881	1.46	2,192	9.18	14.8	26.0	15.6	84,610
		Putnam, NY	99,070	1,168	1.18	58	4.97	2.9	14.3	6.0	100,887
Queens, NY (Queens, NYC)	2,298,513	59,174	2.57	4,826	8.16	18.3	28.0	11.6	68,432		
Richmond, NY (Staten Island, NYC)	474,101	13,017	2.75	774	5.95	10.2	18.3	11.7	79,719		
Rockland, NY	323,686	12,831	3.96	611	4.76	12.3	17.4	13.9	88,960		
Westchester, NY	968,815	32,517	3.36	1,305	4.01	14.7	24.3	8.3	94,521		
Poughkeepsie-Newburgh-Middletown, NY Metropolitan Statistical Area	Dutchess, NY	293,894	3,724	1.27	126	3.38	10.5	11.9	9.2	79,604	
	Orange, NY	378,227	10,043	2.66	419	4.17	10.8	20.0	11.5	75,048	
Torrington, CT Micropolitan Statistical Area	Litchfield, CT	183,031	1,299	0.71	121	9.31	1.9	6.0	6.9	76,304	
Trenton-Princeton, NJ Metropolitan Statistical Area	Mercer, NJ	368,762	6,162	1.67	431	6.99	20.7	17.2	10.9	79,979	

Supplementary Table. Summary of Meta-Regression

Outcome	Covariate	Coefficient		<i>P</i> value	Multivariable <i>P</i> value	
		Lower bound	Upper bound			
Prevalence	Black (%)	0.021	0.004	0.038	.015	.377
	Hispanic or Latino (%)	0.031	0.019	0.043	< .001	< .001
	Poverty rates (%)	0.039	0.005	0.074	.026	.229
	Median household income (\$)	– 0.000	–0.000	0.000	.639	–
Case fatality	Black (%)	0.006	–0.005	0.018	.286	–
	Hispanic or Latino (%)	– 0.001	–0.011	0.010	.916	–
	Poverty rates (%)	0.003	–0.020	0.026	.811	–
	Median household income (\$)	– 0.000	–0.000	0.000	.854	–