

1 **Prognostic Impact of Human Papillomavirus Infection on Cervical Dysplasia, Cancer, and Patient**  
2 **Survival in Saudi Arabia: A 10-Year Retrospective Analysis**

3 **Alhamlan F.S.,<sup>1,2\*</sup> Obeid D.A.,<sup>1</sup> Khayat H.H.,<sup>1</sup> Tulbah A.M.,<sup>3</sup> Al-Badawi I.A.,<sup>4</sup> Al-Muammar T.A.,<sup>5</sup> Almutairi A.N.,<sup>1</sup>**  
4 **Almatrrouk S.A.,<sup>1</sup> Alfageeh M.B.,<sup>6</sup> Bakhrebah M.A.,<sup>7</sup> Nassar M.S.,<sup>7</sup> Al-Ahdal M.N.,<sup>1,2,3</sup>**

5  
6 <sup>1</sup>Department of Infection and Immunity, King Faisal Specialist Hospital and Research Center, Riyadh, Saudi Arabia  
7 <sup>2</sup>College of Medicine, Alfaisal University, Riyadh, Saudi Arabia  
8 <sup>3</sup>Department of Pathology and Laboratory Medicine, King Faisal Specialist Hospital and Research Center, Riyadh, Saudi Arabia  
9 <sup>4</sup>Department of Obstetrics and Gynecology, King Faisal Specialist Hospital & Research Center, Riyadh, Saudi Arabia  
10 <sup>5</sup>Department of Family Medicine and Polyclinic, King Faisal Specialist Hospital and Research Center, Riyadh, Saudi Arabia  
11 <sup>6</sup>Infectious Diseases Program, National Center for Biotechnology, King Abdulaziz City for Science and Technology, Riyadh,  
12 Saudi Arabia  
13  
14 <sup>7</sup>Life Science and Environmental Research Institute, King Abdulaziz City for Science and  
15 Technology (KACST), Riyadh, Saudi Arabia  
16  
17

18 **Short title:** HPV Infection Status is Prognostic of Cervical Cancer Survival

19

20 **Declarations of interest:** none

21

22

23

24

25

26

27

28

29

30 **\*Correspondence:** F.S. Alhamlan ([falhamlan@kfshrc.edu.sa](mailto:falhamlan@kfshrc.edu.sa) ). MBC 03, P.O Box 3354,  
31 Riyadh, Saudi Arabia 11211. Tel: +966 11 44 24365

32 **Abstract**

33 Cervical cancer is caused by persistent human papillomavirus (HPV) infection. However, HPV  
34 prevalence data and survival rates among HPV-infected women are scarce in Saudi Arabia. This  
35 study assessed the prevalence of HPV genotypes in a 10 year time-frame. Cervical biopsy  
36 specimens underwent HPV detection, HPV viral load using qPCR, HPV genotyping, p16<sup>INK4a</sup>  
37 expression measurement using immunohistochemistry. Kaplan-Meier plots were constructed to  
38 analyze overall survival rates. Of the 316 cervical specimens examined, HPV was detected in 96  
39 (30.4%); 37.3% had cervical cancer; 14.2% cervical intraepithelial neoplasia (CIN) III, 4.1%  
40 CIN II, and 17.0% CIN I. A significant association was found between HPV-16 viral load and  
41 disease progression ( $P < .001$ , Mann-Whitney  $U$ ) and between HPV presence and cervical cancer  
42 ( $\chi^2$ , 56.78;  $P < .001$ ). The expression of p16<sup>INK4a</sup> was a significant predictor of survival: women  
43 who had p16<sup>INK4a</sup> overexpression had poorer survival rates (multivariate Cox regression, hazard  
44 ratio, 3.2; 95% CI, 1.1-8.8). In addition, multivariate models with HPV status and cervical cancer  
45 diagnosis showed that HPV status was a significant predictor of survival: HPV-positive women  
46 had better survival rates than HPV-negative women (hazard ratio, 1.8; 95% CI, 1.1-3.0). These findings suggest that  
47 implementing cervical cancer and HPV screening programs may decrease cervical cancer rates  
48 and improve survival rates of women in Saudi Arabia.

49  
50 **Keywords:** Cervical cancer, Sexual transmitted infection, Human papillomaviruses, Women's health

51

52

53

54

## 55 **1 Introduction**

56 Human papillomavirus, of the family *Papillomaviridae*, is present worldwide and is known to  
57 cause cervical cancer. More than 180 HPV genotypes have been identified, with low-risk types associated  
58 with benign hyperproliferative lesions or genital warts and high-risk types associated with premalignant  
59 and malignant cervical lesions [1]. Of the 190 million women globally who received a diagnosis of an  
60 HPV clinical infection in 2012, approximately 528,000 also received a new diagnosis of cervical  
61 carcinoma, and 266,000 women died of this cancer [2]. Approximately 85% of detected HPV cases occur  
62 in less developed countries despite current efforts to provide information about this virus and its  
63 relationship to cervical cancer to the general public as well as to health care professionals in these  
64 countries. Although it has been estimated that 2.2% of the women in Western Asia have a cervical HPV  
65 infection, observations on the HPV burden in the more limited region of Saudi Arabia remain  
66 controversial [3]. The results of some studies indicate that the rate of HPV infection in Saudi Arabia is the  
67 lowest in the world, whereas other studies show that the rate is high [4], [5], [6], [7].

68 Every abnormal or dysplastic lesion of the cervix should be considered potentially malignant and  
69 may develop into cervical cancer [8], [9]. Initial abnormal cervical epithelial cell detection is generally  
70 conducted through a Papanicolaou (Pap) test, commonly known as a Pap smear, which is considered the  
71 “gold standard” test, with the results reported using the Bethesda System of classification (Apgar et al,  
72 2003). A biopsy is performed, and histologic testing is used to confirm a diagnosis, with results, listed in  
73 order from the mildest to the most severe disease progression, of cervical intraepithelial neoplasia (CIN)  
74 I, CIN II, CIN III, and cervical cancer [10], [11]. However, the interpretation of these results is subject to  
75 intraobserver and interobserver variability [12]. This subjectivity can be ameliorated by examining the  
76 expression of biomarkers in biopsied specimens to identify women with ambiguous results who should be  
77 referred for colposcopy and treatment, to distinguish transforming from productive HPV infections, and  
78 to predict disease severity [13]. One such biomarker is p16<sup>INK4a</sup>, a cyclin-dependent kinase inhibitor  
79 that coordinates the cell cycle (G1 to S phase) and acts as a tumor suppressor. Overexpression of p16<sup>INK4a</sup>

80 protein has been used as a biomarker to distinguish transforming HPV infections and, in conjunction with  
81 histologic assessment of cervical biopsies, to confirm ambiguous results [14].

82 Because of the high prevalence of HPV, persistence of HPV infections, and long latency for the  
83 development of cervical cancer, primary effective screening for detection of HPV infection and for HPV  
84 genotyping during the same clinical visit is important. Such screening would provide better outcomes for  
85 all women but especially for those in developing countries. Testing would be for the presence of HPV or  
86 HPV-associated serologic markers (HPV biomarkers) in addition to liquid-based cytology, the visual  
87 inspection of the cervix, or histologic examination [12], [15].

88 Cervical cancer is the most preventable cancer, and women with cervical cancer have a high  
89 survival rate when it is detected in the early stages [16]. However, although the number of cases of  
90 cervical cancer is low in Saudi Arabia, most Saudi women do not seek medical attention until the late  
91 stages of the disease. Alhamlan et al. (2017) reported that nearly half of all women with cervical cancer in  
92 the Gulf Cooperation Council countries, which include Saudi Arabia, presented at the hospital with  
93 regional or distant metastasis stages [16]. They found that only 28% of patients in these countries sought  
94 medical care over a 14-year period for early-stage cervical cancer, whereas more than 50% presented to  
95 the hospital in late stages, decreasing their survival rate. Specimen were collected from King Faisal  
96 Specialist Hospital and Research Centre (KFSHRC), which is a tertiary care and referral hospital in Saudi  
97 Arabia. In Saudi Arabia, population cervical screening programs are not available, and no HPV  
98 vaccination programs are implemented yet. An overall goal for the present study was to highlight the  
99 importance of HPV infection burden and cervical cancer in Saudi Arabia, should our results show this to  
100 be the case.

101 The present study determined the prevalence of HPV and its genotypes among women attending a  
102 Saudi Arabian referral hospital between 2006 and 2016, assessed the association of HPV genotypes with  
103 cervical dysplasia and cancer, and determined whether HPV presence predicted survival.

## 104 **2 Materials and Methods**

### 105 *2.1 Cervical specimen collection*

106 Biopsied formalin-fixed paraffin-embedded (FFPE) cervical specimens at various stages of  
107 cervical dysplasia and cancer archived from 2006 to 2016 were obtained from the College of American  
108 Pathologists–accredited Pathology Department of KFSHRC, the largest central and referral hospital in  
109 Saudi Arabia. All FFPE specimens with abnormal cervical findings were eligible for inclusion, but those  
110 with no clinical or demographic data available or those without diagnostic confirmation were excluded. In  
111 total, 316 specimens were included in this study.

## 112 *2.2 Cervical specimen processing*

113 The FFPE specimen blocks were processed using a standard method. Briefly, four sections of  
114 tissues (4  $\mu\text{m}$  thick) were obtained from each block for molecular assays. To minimize contamination, the  
115 microtome blade was disinfected after each use, and an empty paraffin-embedded block was used  
116 immediately after each disinfection step to control for any carryover contamination or inhibitors.

117 Immunohistochemical assays were performed to detect levels of p16<sup>INK4a</sup> expression in the cervical  
118 specimens using an anti-p16<sup>INK4a</sup> antibody (sc-460, Santa Cruz Biotechnology, Dallas, TX, USA) by  
119 following a previously published protocol [17]. Brown nuclear or cytoplasmic staining was considered  
120 positive for p16<sup>INK4a</sup> expression. The p16<sup>INK4a</sup> expression level was assigned a value from 0 to 3 as  
121 follows: 0, no staining; 1, weak focal staining; 2, strong focal or weak diffuse staining; and 3, strong  
122 diffuse staining [17], [18].

123 DNA extraction was conducted using a QIAamp DNA FFPE Tissue kit and following the  
124 manufacturer's instructions (Qiagen; Valencia, CA, USA). This kit is specialized to extract and purify  
125 DNA from FFPE tissue. The extracted genomic DNA was quantified and checked for purity using a  
126 spectrophotometer, where the ratio of the sample absorbance at wavelengths 260 nm and 280 nm is  
127 approximately 1.8 (NanoDrop Technologies; Wilmington, DE, USA). To confirm the presence of DNA in  
128 each sample, primers for the  $\beta$ -globin gene (i.e., a housekeeping gene) were used.

## 129 *2.3 Demographic and clinical statistical analyses*

130 Demographic and clinical data were collected, including patient age, marital status, religion,  
131 nationality, and specimen pathologic results. All data were collected and analyzed using SAS (version  
132 9.4) software. The percentage of women in each category who were HPV-positive was calculated and is  
133 presented with corresponding 95% confidence intervals (CIs). Descriptive analyses were performed for  
134 HPV prevalence, HPV genotypes, patient age distribution, potential risk factors, and HPV status. The  $\chi^2$   
135 test of independence was used to assess the association between categorical variables. Mann-Whitney and  
136 *t* tests were used to assess differences between categorical groups (i.e., HPV status, p16<sup>INK4a</sup> expression  
137 level, and cervical cancer status) and numerical variables, such as age and viral load. Odds ratio estimates  
138 and their 95% CIs were generated using the Mantel-Haenszel method. The type I error rate was set at  
139 5%. An exploratory analysis was performed to assess the association between HPV status and age, and  
140 the adjusted odds ratio (adjusted for factors that are associated with the risk of HPV infection) was  
141 calculated using a multivariate logistic regression model.

142 The collected data were also used to calculate a survival rate in this hospital-based cohort study.  
143 The overall survival rate was defined as the time between the date of diagnosis and the date of death or of  
144 the last follow-up observation. The Kaplan-Meier method was used to generate HPV-specific survival  
145 curves, and the differences between groups (HPV-positive vs. HPV-negative) were analyzed using the  
146 log-rank test. A multivariate Cox proportional hazards analysis was used to evaluate the association of  
147 overall survival with each prognostic factor (e.g., HPV type, disease stage, and age). In this cohort  
148 analysis, 29 patients overall died within the study time frame. Thus, owing to the small sample size, these  
149 results should not be generalized to the general population.

#### 150 *2.4 HPV polymerase chain reaction detection*

151 Well-established sets of polymerase chain reaction (PCR) primers were utilized for HPV  
152 detection. The primer sets used were MY09/MY11 and GP5+/GP6+ which target sequences located  
153 within the L1 region of HPV genome [19]. Primer sequences for the first round are as follows MY09 (5'  
154 CGT CCA AAA GGA AAC TGA GC 3'), MY11 (5' GCA CAG GGACAT AAC AAT GG 3') with an

155 amplicon size of 450 bp. The primer sequences for the nest PCR are as follows: GP5+ (5' TTT GTT ACT  
156 GTG GTA GAT ACT AC 3') and GP6+ (5' GAA AAA TAA ACT GTA AAA CAT ATT C 3') with an  
157 amplicon size of 150 bp. Positive controls (i.e., HeLa cells for HPV-18 and SiHa cells for HPV-16), a  
158 negative control (UltraPure DNase/RNase-free water), and internal control primers for the  $\beta$ -globin gene  
159 (Takara, Cat. #3868, GH20-forward and PC04-reverse; amplicon size 248 bp) were used. For the first  
160 round of PCR, a total reaction volume of 25 uL was prepared that included 1 uL of the template DNA,  
161 MY09/11 primers (1 uL each), 12.5 uL of GoTaq Green Master Mix (Promega; Madison, WI, USA), and  
162 9.5 uL of DNase/RNase-free water. For nested PCR, 2 uL of the product from the first round was  
163 amplified with GP5/GP6 primers (1 uL each), 12.5 uL of GoTaq Green Master Mix (Promega), and 8.5 uL  
164 of DNase/RNase-free water. The products from the nested PCR were separated using 1.5% agarose gel  
165 electrophoresis and visualized using ultraviolet light (Gel Doc EZ Gel; Bio-Rad) .

#### 166 *2.5 HPV detection and genotyping using the GenoFlow HPV array test*

167 The GenoFlow HPV array test (DiagCor Bioscience Inc., Hong Kong) is a reverse dot blot assay  
168 with the ability to genotype 33 types of HPV. This includes 17 high-risk HPV genotypes (16, 18, 31, 33,  
169 35, 39, 45, 51, 52, 53, 56, 58, 59, 66, 68, 73, and 82), and 16 low-risk HPV genotypes (6, 11, 26, 40, 42,  
170 43, 44, 54, 55, 57, 61, 70, 71, 72, 81, and 84), and a universal probe for the detection of 33 HPV  
171 genotypes and out-of-panel HPV genotypes. The test uses a modified PGMY primer set to amplify the L1  
172 region of HPV. A rapid flow-through process enables the hybridization of the PCR products to the 33  
173 HPV genotyping probe spots, a universal probe spot for detecting HPV genotypes outside the panel, or  
174 some HPV variants adhered to a membrane. An internal control (the albumin gene) as well as a negative  
175 control (UltraPure DNase/RNase-free water) was used along with the samples. The GenoFlow array  
176 testing used for genotyping was performed on only the PCR-positive samples because overall cost was a  
177 consideration for this study. The genotyping results were interpreted using the manufacturer's instructions  
178 as follows: a valid HPV-positive result was one that included visible signals at the universal,

179 hybridization control, and amplification control probe spots; a valid HPV-negative result included signals  
180 at the hybridization control and amplification control probe spots.

### 181 *2.6 Viral load assay*

182 To quantify HPV-16 and HPV-18 DNA levels, multiplex quantitative real-time PCR was  
183 performed using a 7500 Fast Real-Time PCR system and software (Applied Biosystems, California,  
184 USA). Viral load assays for HPV-16 and HPV-18 were conducted for all of the HPV-positive cases,  
185 regardless of the GenoFlow results. The quantitation plasmid used contained the three target sequences of  
186 interest: HPV-16, HPV-18, and glyceraldehyde-3-phosphate dehydrogenase (GAPDH) genes. Primers  
187 and probes targeted the L1 gene region and were custom designed by Applied Biosystems (Warrington,  
188 UK; kit assay #AIY90LA for HPV-18 and #AIX02E2 for HPV-16). Genomic DNA and HPV plasmids  
189 were amplified using TaqMan Universal PCR Master Mix (Applied Biosystems; Warrington, UK). The  
190 amplification conditions for GAPDH, HPV-16, and HPV-18 were 50°C for 2 min and 95°C for 12 min  
191 followed by 50 cycles of 95°C for 15 s and 55°C for 30 s. Positive controls were a SiHa cervical  
192 carcinoma cell line that was positive for HPV-16 and a HeLa cell line positive for HPV-18. The negative  
193 control was UltraPure DNase/RNase-free water. Tenfold plasmid dilutions were used to construct 5-point  
194 standard curves for all three target sequences, and the viral load was normalized to the input amount of  
195 cellular DNA. All samples were analyzed three times, and the mean values were expressed as the mean of  
196 HPV copies per microliter.

### 197 *2.7 Ethical approval and participant informed consent*

198 This study was conducted according to the World Medical Association Declaration of Helsinki.  
199 The study protocol was approved by the Research Advisory Council (Ethics Committee) at KFSHRC  
200 (No. 2150001). The need for obtaining written informed patient consent was waived by the ethics  
201 committee for the present study because the cervical biopsies were archived, and the collected patient data  
202 were coded and thus deidentified.

## 203 **3 Results**



204           The demographic and clinical characteristics of the 316 women included in this study are shown  
205 in Table 1. The women were aged 11 to 95 years (mean, 49.5 years; standard deviation, 13.4 years). The  
206 prevalence of HPV increased with age from 11-30 years to 46-60 years, with the prevalence for women  
207 older than 60 years less than that for women aged 31-45 years. Most of the women claimed Saudi  
208 nationality, while 13.6% were non-Saudi. In addition, 74.4% of the women were married, 11.7% were  
209 widowed, 10.1% were single, and 3.8% were divorced. The pathologic results indicated that 37.3% of the  
210 collected samples were positive for cervical cancer, 14.2% were classified as CIN III, 5.1% as CIN II, and  
211 17.1% as CIN I, and 26.3% were considered normal tissue. HPV status was analyzed with the other  
212 demographic and clinical data (age group, religion, nationality, marital status, histology grades, and  
213 cervical cancer diagnosis) using the  $\chi^2$  test. Marital status, age groups, histologic grades, and cancer  
214 diagnosis were significantly associated with HPV status ( $P < .05$  for each).

215 **Table 1. Demographic and clinical data analyzed by HPV status and presented as percentages of**  
 216 **each subcategory (N = 316).**

<b>Category</b>	<b>HPV-positive (n = 96) No. (%)</b>	<b>HPV-negative (n = 220) No. (%)</b>	<b>Chi-square (P value)</b>
<b>Age, years</b>			
11-30	2 (11.8)	15 (88.2)	8.3 (0.04)
31-45	30 (26.3)	84 (73.7)	
46-60	37 (30.3)	85 (69.7)	
>60	27 (42.9)	36 (57.1)	
<b>Mean (SD)</b>	52.51 (13.4)	48.31 (13.4)	<b>t test = 2.5 , P value = .01</b>
<b>Religion</b>			
Muslim	90 (31.8)	193 (68.2)	2.6 (.11)
Non-Muslim	6 (18.2)	27 (81.8)	
<b>Nationality</b>			
Saudi	87(31.9)	186 (68.1)	2.1 (.15)
Non-Saudi	9 (20.9)	34(79.1)	
<b>Marital status</b>			
Married	66(28.1)	169 (71.9)	9.4 (.02)
Divorced	4(33.3)	8 (66.7)	
Widowed	19 (51.4)	18 (48.6)	
Single	7 (21.9)	25 (78.1)	
<b>Histologic Classification</b>			
Normal	6 (7.2)	77 (92.8)	64.5 (<.0001)
CIN I	6 (11.1)	48 (88.9)	
CIN II	3 (18.8)	13 (81.2)	
CIN III	17 (37.8)	28 (62.2)	
Cervical cancer	64 (54.2)	54 (45.8)	
<b>Diagnosis</b>			
Cancer cases	64 (54.2)	54 (45.8)	50.7 (<.0001)
Non-cancer cases	32 (16.2)	166 (83.8)	

217           Of the 316 tested cervical specimens, HPV was detected in 96 specimens (30.4%). The most  
218 common HPV high-risk types detected were HPV-16 (56.3%), HPV-18 (7.3%), HPV-31 (4.2%), HPV-58  
219 (3.1%), HPV-56 (2.1%), HPV-33 (2.1%), and HPV-45 (1.0%); 19% of the cervical specimens had  
220 multiple infections (Table 2). The low-risk HPV types, including HPV-6, 11, 57, and 71, were detected  
221 mostly as co-infections with the high-risk types.

222 **Table 2. Distribution of high- and low-risk HPV subtypes as detected by GenoFlow HPV array**  
 223 **assay in 96 formalin-fixed paraffin-embedded specimens.**

HPV type	No. (%)
<b>High-risk Genotypes Detected</b>	
16	54 (56.3)
18	7 (7.3)
31	4 (4.2)
33	2 (2.1)
35	1 (1.0)
45	1 (1.0)
56	2 (2.1)
58	3 (3.1)
82	1 (1.0)
<b>Multiple HPV Infections Detected</b>	
11, 33	2 (2.1)
16, 11, 33	1 (1.0)
16, 18	3 (3.1)
16, 31	1 (1.0)
16, 51	1 (1.0)
16, 57, 71	2 (2.1)
16, 58	1 (1.0)
16, 66, 68	1 (1.0)
11, 31	1 (1.0)
31, 33, 18	1 (1.0)
53, 56	1 (1.0)
6, 16	1 (1.0)
6, 58	1 (1.0)
Unknown	1 (1.0)
Negative	3 (3.1)

224 Figure 1 shows the distribution of HPV status (positive or negative) by classification of cervical  
225 dysplasia or the presence of cervical cancer. Of the total specimens tested for HPV, 54.2% of cervical  
226 cancer cases tested positive, 37.2% of those classified as CIN III tested positive, 18.8% of those classified  
227 as CIN II tested positive, and 11.1% of those classified as CIN I tested positive. In addition, 92.8% of the  
228 specimens were considered both normal cervical tissue and negative for HPV.

229  
230 **Figure 1. Distribution of the histologic classification by HPV status.** HPV status 0 indicates negative  
231 for HPV, and 1 indicates positive for HPV. CIN indicates cervical intraepithelial neoplasia. Bars indicate  
232 percentages calculated using the grand total number of specimens processed.

233  
234 The p16<sup>INK4a</sup> immunohistochemistry staining was strongly positive in 212 samples, and these  
235 results are summarized in Table 3. The p16<sup>INK4a</sup> marker was significantly associated with both histologic  
236 abnormalities and HPV status ( $P < 0.0001$ ). For the histologic abnormalities, approximately 86.9% of  
237 cervical cancer cases were positive for the p16<sup>INK4a</sup> marker, and the majority of both CIN II and CIN III  
238 specimens were positive for this marker. For the HPV status, 87.5% were both HPV- and p16<sup>INK4a</sup>-  
239 positive, and approximately 59.6% were negative for both HPV and p16<sup>INK4a</sup>.

240 **Table 3. p16<sup>INK4a</sup> Immunohistochemistry results for 212 samples by histologic classification and**  
 241 **HPV status, with percentages calculated using the total number in each subcategory (row).**

<b>Histologic Classification</b>	<b>p16<sup>INK4a</sup>-Positive No. (%)</b>	<b>p16<sup>INK4a</sup>-Negative No. (%)</b>	<b>Chi-Square Test (P Value)</b>
Normal	3 (5.4)	53 (94.6)	110.4 (<.0001)
CIN I	9 (24.3)	28 (75.7)	
CIN II	7 (70.0)	3 (30.0)	
CIN III	20 (80.0)	5 (20.0)	
Cervical cancer	73 (86.9)	11(13.1)	
<b>HPV Status</b>			
Positive	49 (87.5)	7 (12.5)	36.7 (<.0001)
Negative	63 (40.4)	93 (59.6)	

242 The survival analysis was conducted using data from 316 women, of which 29 died and 2 were  
243 excluded from the analysis. The initial summary of the survival analysis using Kaplan-Meier analysis  
244 (Supplementary material, Table S3), indicated that 2 patients had significantly longer survival time,  
245 exceeding 5 years, than the remaining patients, who had survival times of 3 years or less; therefore, these  
246 two patients were excluded from the analysis. Table 4 summarizes the Kaplan-Meier survival analyses of  
247 314 patients. Figure 2 shows the Kaplan-Meier plot for Cervical cancer clinical groups, Cervical Cancer  
248 has a higher risk and lower survival rates than other patients, additional examined groups are shown in the  
249 Supplementary Figures S1-S3.

250 The distributions of survival in several groups were tested using the Kaplan-Meier method and  
251 validated with the log-rank test (univariate modeling) and using hazard ratios (HRs) validated with the  
252 maximum likelihood test. The Kaplan-Meier plots showed that a significant difference in survival  
253 distribution was detected by the presence of cervical cancer, age, p16<sup>INK4a</sup> expression level, and histologic  
254 grade (log-rank test,  $P < .05$ ). For the HPV status, a lower HR was detected in positive HPV samples  
255 (HR, 0.9; 95% CI, 0.4-2.0). For the age groups, the HR was highest in the oldest group of women (HR,  
256 2.8; 95% CI, 0.8-10.3). For cervical cancer, a higher HR was found in women with cervical cancer (HR,  
257 17.9; 95% CI, 4.1-77.5), and the HR was statistically significant ( $\chi^2$ , 33.5;  $P < .0001$ ). For the histologic  
258 grades, there was insufficient data to conduct an analysis because we did not include patients in the CIN  
259 II and CIN III groups who died during the time frame of the study. Regarding the p16<sup>INK4a</sup> status, a higher  
260 HR was found in cervical specimens positive, rather than negative, for p16<sup>INK4a</sup> expression (HR, 3.2; 95%  
261 CI, 1.1-8.8). Kaplan-Meier plots generated for p16<sup>INK4a</sup> status by survival rate showed that the survival  
262 rate was higher among women whose specimens were negative for p16<sup>INK4a</sup> than among those positive for  
263 p16<sup>INK4a</sup> (log-rank test,  $P < 0.001$ ). This finding indicated that p16<sup>INK4a</sup> expression directly reflected  
264 cervical specimens infected with high-risk HPV and thus added substantial diagnostic accuracy in the  
265 evaluation of CIN.

266 **Table 4. Survival analysis showing Kaplan-Meier analysis and Cox regression analysis summaries.**

Category	Mean Overall Survival, days	Hazard Ratio (95% CI)	Log Rank Test <i>P</i> value	Maximum Likelihood Test <i>P</i> value
HPV status			0.70	0.70
Positive (deceased =20)	1278.8	0.9 (0.4-2.0)		
Negative (deceased =7)	1179.4	1		
Age group, years			<.0001	0.0003
11-30 (deceased =3)	552.9	1		
31-45 (deceased 4)	1142.2	0.3 (0.1-1.1)		
46-60 (deceased =10)	1229.2	0.7 (0.2-2.5)		
>60 (deceased =10)	659.5	2.8 (0.8-10.3)		
P16ink4a Expression*			0.021	0.0189
Positive (deceased =14)	825.2	3.2 (1.1-8.8)		
Negative (deceased =5)	959.2	1		
Cervical Cancer			<0.0001	<0.0001
Positive (deceased =25)	1343.6	17.9 (4.1-77.5)		
Negative (deceased =2)	2524.4	1		

267 \*From the 212 samples strongly determined by the p16 marker.



268           A multivariate Cox regression analysis was conducted to determine the effect of all variables.

269    Using a stepwise method, the model that best predicted survival was one that consisted of HPV status

270    (HR, 0.24; 95% CI, 0.10-0.59) and cervical cancer diagnosis (HR, 39.51; 95% CI, 9.1-171.50). Other

271    models were assessed, and they are described in Table 5.

272

273    **Figure 2. Kaplan-Meier (survival) plot by cervical cancer diagnosis in the KFSHRC cohort, with**  
274    **Hall-Wellner 95% confidence bands and survival rate test.** Cervical cancer cases are represented by  
275    the red band, and patients negative for cervical cancer are represented by the blue band. The number of  
276    the high risk groups are represented below the figure.

277 **Table 5. Multivariate Cox regression model analyses.**

<b>A. Multivariate Cox model using cervical cancer and HPV status</b>		
<b>Factor</b>	<b>Hazard Ratio (95% CI)</b>	<b>P Value</b>
<b>HPV status</b>		$P < .0001$
Positive	0.2 (0.1-0.6)	
Negative	1	
<b>Cervical cancer</b>		
Positive	39.5 (9.1-171.5)	
Negative	1	
<b>B. Multivariate Cox model using cervical cancer and p16<sup>INK4a</sup></b>		
<b>p16<sup>INK4a</sup> expression</b>		$P < .0001$
Positive	0.5 (0.2-1.6)	
Negative	1	
<b>Cervical cancer</b>		
Positive	27.9 (5.3-147.1)	
Negative	1	
<b>C. Multivariate Cox model using HPV status, age group, and p16<sup>INK4a</sup></b>		
<b>p16<sup>INK4a</sup> expression</b>		$P = 0.015$
Positive	4.3(1.5-12.4)	
Negative	1	
<b>Age group, years</b>		
<30	1	
31-45	1.2 (0.1-11.3)	
46-60	2.3 (0.3-19.5)	
>60	12.3 (1.4-106.5)	
<b>HPV status</b>		
Positive	0.2 (0.05-0.7)	
Negative	1	

278 The distributions of the HPV-16 and HPV-18 viral loads by histologic grade are shown in Figure  
279 3. The viral load assay was conducted on all HPV-positive samples; thus, for HPV-16, the assay was  
280 conducted on 70 samples, while for HPV-18, 11 samples were analyzed. The viral load assay detected  
281 one more sample than the GenoFlow assay did for HPV-16, whereas for HPV-18, the results were similar  
282 to those of the GenoFlow assay. The results of the viral load assay was assessed using the Mann-Whitney  
283 test to determine whether there was a significant association between the DNA viral loads for HPV-16 or  
284 HPV-18 (measured in DNA copies per microliter) and histologic classification. The distribution of HPV-  
285 16 viral load by histologic grade results showed that the highest mean viral load was found in specimens  
286 with cervical cancer, followed by those classified as CIN III and CIN II. The distribution of HPV-18 viral  
287 load by histologic grade results showed that the highest mean viral load was found in one specimen  
288 classified as CIN III, followed by 11 specimens with cervical cancer (Supplementary material Table-S1).  
289 There was a statistically significant association of HPV-16 viral load with cervical cancer. The median  
290 HPV-16 viral load in the cervical cancer specimens was 5180.6 copies/ $\mu$ l (n = 49), whereas the median of  
291 HPV-16 viral load in noncancerous specimens was 331.3 copies/ $\mu$ l (n = 21), indicating a significant  
292 association between a high viral load and disease progression ( $P < .001$ , Mann-Whitney  $U$ ). By contrast,  
293 there was no statistically significant association of HPV-18 viral load with cervical cancer (cervical  
294 specimens with cancer vs. those without cancer:  $P = .1475$ , Mann-Whitney  $U$ ). Supplementary material  
295 Table S2-A summarizes the HPV-16 and HPV-18 viral loads by cervical cancer status.

296  
297 **Figure 3. DNA viral loads for HPV-16 and HPV-18 (measured in DNA copies per microliter)**  
298 **distributed by histologic grade.** (Left) The highest mean HPV-16 viral load is found in cervical cancer  
299 specimens, followed by cervical intraepithelial neoplasia (CIN) III, CIN II, and normal specimens.  
300 (Right) The highest mean HPV-18 viral load is found in CIN III specimens and the next highest is in  
301 cervical cancer specimens.

302  
303  
304 A Mann-Whitney test was conducted to determine whether the HPV-16 or HPV-18 viral load was  
305 associated with p16<sup>INK4a</sup> status or a cervical cancer diagnosis. A significant difference was found for the

306 HPV-16 viral load between specimens positive or negative for p16<sup>INK4a</sup>, with positive specimens showing  
307 a higher viral load than negative specimens (Supplementary material Table S2-B).

#### 308 **4 Discussion**

309 HPV infection is the most common sexually transmitted infection and is particularly common  
310 among sexually active young women. The results of the present study showed slight differences in age-  
311 specific HPV prevalence, with HPV infection more common in middle-aged women (31-45 years) than in  
312 younger women (11-30 years). This discrepancy with the worldwide trend could be attributable to low  
313 sample size or differences in sexual practice, lifestyle, and genetic predisposition in Saudi Arabia [16].  
314 However, further studies and evaluation will be required because of the current changes in socioeconomic  
315 status, lifestyles, and sexual behaviors in regions that have been traditionally considered to be  
316 conservative societies.

317 HPV was detected in 96 of the 316 cervical specimens examined in the present study. The three  
318 most common HPV types detected were HPV-16 (56.3%), HPV-18 (7.3%), and HPV-31 (4.2%), with  
319 19% of the cervical specimens having multiple infections. These data are consistent with previous studies  
320 reporting that HPV-16 is the most common type followed by HPV-18 where there was a significant  
321 association between the presence of HPV and cervical cancer ( $\chi^2$ , 56.8; df = 1,  $P < .001$ ) [20]. Our study  
322 also showed that the GenoFlow assay had less sensitivity than the qPCR assay. In studies in our  
323 laboratory, the specificity of the GenoFlow assay is 100%, but its sensitivity is considered low (62%)  
324 [21].

325 The present study also evaluated the association of HPV with the prognosis of women with  
326 cervical dysplasia. A multivariate Cox regression analysis showed the model with HPV status and  
327 cervical cancer diagnosis to be a significant predictor of survival. In this model, women with HPV-  
328 negative cervical specimens had a poorer survival rate than those with HPV-positive specimens. The  
329 results of many previous studies agree with our results, and those studies that are not in agreement do not  
330 have larger sample sizes than that of the present study. Rodrigues-Carunchio et al. (2105) found that  
331 patients with cervical cancer and confirmed HPV negativity had significantly worse disease-free survival

332 than women with HPV-positive tumors. In their multivariate analysis, HPV-negativity and International  
333 Federation of Gynecology and Obstetrics staging were associated with increased risk of progression and  
334 mortality [22]. Li et al. (2018) published a comprehensive meta-analysis showing the prognosis  
335 significance of HPV DNA status in cervical cancer [23]. They evaluated survival data from 2,838 women  
336 with cervical cancer and found that women who tested positive for high-risk HPV had a better cervical  
337 cancer prognosis (pooled HR, 0.4; 95% CI, 0.3-0.5;  $P < .001$ ) and better overall survival (pooled HR, 0.6;  
338 95% CI, 0.5-0.8;  $P = .001$ ) than those who tested negative for high-risk HPV. Previous studies have  
339 discussed the better survival outcomes for women who are HPV-positive and have cervical cancer [24].  
340 Infection with a high-risk HPV is strongly associated with the development of cervical carcinoma. The  
341 gene sequences encoding the two major viral oncoproteins, E6 and E7, are consistently retained and  
342 expressed in cervical cancer cases. The E6 and E7 genes are thought to play causative roles because E6  
343 promotes the degradation of p53, and E7 binds to the retinoblastoma protein and disrupts its complex  
344 formation with E2F transcription factors [24]. However, there are independent factors that cause p53  
345 mutations. The association of p53 mutation with metastases may explain the poor prognosis reported for  
346 HPV-negative primary cancers, many of which already contain mutant p53. A high proportion of p53  
347 mutations detected in both primary and metastatic cancers are GC to TA transversions, strongly  
348 suggesting a role for external carcinogens in the development of these cancers. The evidence supports that  
349 HPV-negative cancers, which frequently carry somatic p53 mutations, show a worse prognosis than HPV-  
350 positive, wild-type p53 tumors [25].

351 Our data showed unexpectedly high numbers of CIN-III and cervical cancer cases that were  
352 negative for the presence of HPV. For specimens that had cervical cancer, these results may be explained  
353 by cervical cancer tumors that were not induced by the presence of a persistent HPV infection, including  
354 the misclassification of endometrial cancers or the metastasis of other cancers to the cervix, the loss of  
355 HPV expression, or the existence of cervical cancers that are not induced by HPV [26]. However, many  
356 reports have indicated that HPV is a necessary but not sufficient cause of invasive cervical cancer; a  
357 variable proportion of tumors have been reported to be negative for high-risk HPV [27]. In addition, a

358 negative HPV test result from a cervical cancer specimen does not necessarily mean that HPV was never  
359 involved in the etiology of that cancer; an HPV viral infection may have been involved in the early  
360 development of the cancer but thereafter resolved. Nevertheless, we acknowledge that there are  
361 limitations in the current testing for detection of HPV, especially between the DNA and mRNA testing  
362 approaches. Currently, a DNA-based assay is considered best for HPV detection and typing in early  
363 infection stages; however, once the disease progresses, RNA-based assays are considered more accurate  
364 [28]. Moreover, to obtain a higher number of samples, we used FFPE specimens, rather than fresh  
365 samples, and this may have affected our results. Another limitation was the use of our mentioned DNA  
366 detection assay instead of one that uses shorter S-phase-promoting factor primers, which are more suited  
367 to FFPE DNA detection. The decision to use the assay we chose was that the availability and the cost of  
368 the instruments and reagents were important factors and that previous studies provided PCR and gel  
369 confirmations for comparison with our results [17], [18].

370         The present study evaluated the viral loads in cervical specimens positive for HPV-16 and HPV-  
371 18. There was a significant increase in lesion severity with viral load in HPV-16–positive cervical  
372 specimens, indicating a significant association between HPV-16 viral load and disease progression.  
373 Although the viral load was higher in HPV-18–positive specimens than in the HPV-16–positive  
374 specimens, because of the small sample size, HPV-18 viral load was not significantly associated with  
375 cervical cancer status. The finding that HPV-16 viral load is positively associated with disease  
376 progression is consistent with previous studies. Xi et al. (2011) examined the HPV-16 viral load in a case-  
377 control study in which patients were followed up and their HPV viral load quantified [29]. They found  
378 that the risk of CIN III increased with increasing HPV-16 DNA load at the follow-up visit. Therefore, the  
379 viral load in newly detected infections and changes in the viral load predict persistence and progression of  
380 HPV-16 infections. Carcopino et al. (2012) also assessed the clinical significance of HPV-16 and HPV-18  
381 viral loads to determine an optimal prediction of high CIN among patients referred for colposcopy [30].  
382 They found that whereas the median HPV-16 viral load increased significantly with increased lesion  
383 grade, HPV-18 viral load showed very poor predictive value. To date, quantification of HPV viral load as

384 a prognostic tool remains controversial because it has often yielded conflicting results. The main reasons  
385 for the apparent discrepant results could be the lack of standardized procedures and no standardized  
386 expression of viral loads. Therefore, the extent to which HPV viral load quantification can be used in  
387 clinical practice must be rigorously assessed in the context of the method used to measure viral load and  
388 the type-specific differences observed for cases of CIN II or greater disease progression [31].

389 The present study also assessed p16<sup>INK4a</sup> expression in cervical biopsy specimens and found that  
390 expression of p16<sup>INK4a</sup> increased with the severity of histologic abnormality. This finding is consistent  
391 with previous studies that reported evidence that p16<sup>INK4a</sup> immunostaining correlates with the severity of  
392 histological abnormalities [32]. Previous studies have shown that p16<sup>INK4a</sup> is a highly sensitive and specific  
393 marker of high-grade squamous and glandular neoplasia of the cervix owing to its overexpression in  
394 cancerous and precancerous cervical lesions [33]. However, reproducibility of this finding may be limited  
395 by the lack of a standardized method to quantify and interpret p16<sup>INK4a</sup> immunostaining. Interestingly, the  
396 results of the immunohistochemistry biomarker p16<sup>INK4a</sup> were more strongly correlated with abnormal  
397 histologic classification than with HPV status.

398 To our knowledge, this is the first study examining the association between HPV infection and  
399 cervical cancer survival among women in Saudi Arabia. This study used a sensitive method capable of  
400 detecting a wide range (33 types) of HPV types, enabling the detection of most HPV types that have been  
401 associated with genital and sexual contacts. In addition, the 10-year retrospective analysis is a substantial  
402 strength of the study. However, there are several limitations of this study that should be considered when  
403 interpreting our results. Because of the low number of cervical cancer cases and late diagnoses, the  
404 number of study specimens was relatively small. This small number also informed our decision to use  
405 FFPE specimens, rather than fresh samples, to obtain a higher number of samples for the analyses.  
406 Although HPV detection assays have their limitations, we took steps to ensure the accuracy of our  
407 findings, including using only samples that passed the  $\beta$ -globin amplification internal control test  
408 (samples that failed this control test were excluded), running positive and negative controls with the

409 samples, capturing gel images to determine specific amplicon sizes, and evaluating DNA quality using a  
410 nanopore sequencing system.

411

## 412 **5 Conclusions**

413 The present study determined the prevalence of HPV among women attending a main referral  
414 hospital in Saudi Arabia between 2006 and 2016. The results suggested that women with HPV-negative  
415 cervical specimens may have a poorer mean survival rate than those with HPV-positive specimens. Our  
416 study also highlighted the importance of accurate molecular diagnostic techniques for HPV detection and  
417 identification, which is crucial for diagnosing patients at risk. These findings contribute to the scientific  
418 and medical databases and suggest that implementing cervical cancer and HPV screening programs in  
419 developing countries may help control cervical cancer and may improve survival rates.

420

## 421 **Acknowledgements**

422 We thank the Infectious Diseases Program, National Center for Biotechnology in King Abdulaziz  
423 City for Science and Technology for their financial and intellectual support. We also thank the members  
424 of the pathology department, chaired by Dr. Fouad Aldayel, for their help and efforts to retrieve the  
425 archived cervical specimens. We thank Dr. Angela Cox from Sheffield Medical School for her advice on  
426 the statistical analysis. The financial support of the Research Centre administration at KFSHRC is highly  
427 appreciated.

428

## 429 **Funding/Support**

430 This work was supported by the Infectious Diseases Program, National Center for Biotechnology in  
431 King Abdulaziz City for Science and Technology and the Research Centre administration at King Faisal  
432 Specialist Hospital and Research Centre.

433

434



435 **Role of the Funders**

436 The funders had no role in study design; in the collection, analysis and interpretation of data; in the  
437 writing of the report; and in the decision to submit the article for publication.

438

439 **Authors' contributions**

440 FA is the principal investigator of this study. DO analyzed patient data and survival rates; HK and AA are  
441 laboratory technicians who ran the molecular assays. AT, IA, TA are physicians who provided the  
442 biopsies and helped in the clinical data interpretation. SA, MF, MB, MN, and MA analyzed and  
443 interpreted the patient data regarding the HPV infection and disease progression. All authors helped in  
444 writing and reviewing the manuscript. In addition, all authors read and approved the final manuscript.

445

446 **References**

- 447 1. J.V. Fernandes, J.M.G. de Araújo, T.A.A. de Medeiros Fernandes **Biology and natural history of**  
448 **human papillomavirus infection** Open Access J. Clin. Trial, 5(2013), pp. 1-12
- 449 2. International Agency for Research on Cancer and World Health Organization. GLOBOCAN 2012:  
450 estimated cancer incidence, mortality and prevalence worldwide in 2012. Available from:  
451 <http://globocan.iarc.fr/Default.aspx>
- 452 3. Canadian Cancer Survivor Network. WHO/ICO information centre on human papillomavirus  
453 (HPV) and cervical cancer. Available from: <http://survivornet.ca/learn/health-concerns-for-cancer-patients/hpv-and-cancer/whoico-information-centre-on-human-papilloma-virus-hpv-and-cervical-cancer/>
- 454 [and-cervical-cancer/](http://survivornet.ca/learn/health-concerns-for-cancer-patients/hpv-and-cancer/whoico-information-centre-on-human-papilloma-virus-hpv-and-cervical-cancer/)
- 455
- 456 4. G. Alsbeih, *et al.* **HPV prevalence and genetic predisposition to cervical cancer in Saudi Arabia**  
457 *Infect. Agent Cancer.*, 8(2013), pp. 15. doi: 10.1186/1750-9378-8-15

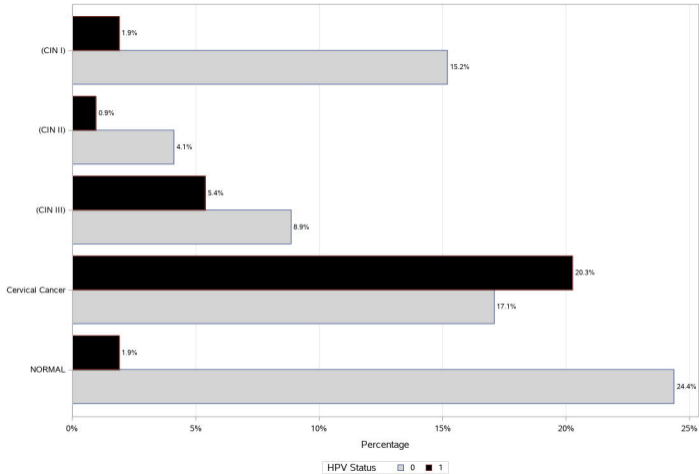
- 458 5. N.S. Bondagji, *et al.* **Prevalence of high-risk human papillomavirus infections in healthy Saudi**  
459 **women attending gynecologic clinics in the western region of Saudi Arabia** Ann. Saudi Med.,  
460 33(2013), pp. 13-17
- 461 6. M.N. Al-Ahdal, *et al.* **Human papillomaviruses in cervical specimens of women residing in**  
462 **Riyadh, Saudi Arabia: a hospital-based study** J. Infect. Dev. Ctries., 8(2014), pp. 320-325
- 463 7. F.S. Alhamlan, *et al.* **Sociodemographic characteristics and sexual behavior as risk factors for**  
464 **human papillomavirus infection in Saudi Arabia** Int. J. Infect. Dis., 46(2016), pp. 94-99
- 465 8. J.M. Walboomers, *et al.* **Human papillomavirus is a necessary cause of invasive cervical cancer**  
466 **worldwide** .J Pathol., 189(1999), pp. 12-19
- 467 9. R.D. Steenbergen, *et al.* **HPV-mediated transformation of the anogenital tract** J. Clin. Virol.,  
468 32(suppl 1)(2005), pp. S25-S33
- 469 10. S. Apgar, L. Zoschnick, T.C. Wright Jr **The 2001 Bethesda System terminology** Am. Fam.  
470 Physician, 68(2003), pp. 1992-1998
- 471 11. C.P. Crum, E.E. Meserve, W.A. Peters III **Cervical squamous neoplasia. In: Diagnostic**  
472 **Gynecologic and Obstetric Pathology, 3rd Edition** Elsevier, 2018. pp. 298-374
- 473 12. A. Molijn, *et al.* **Molecular diagnosis of human papillomavirus (HPV) infections** J. Clin. Virol.,  
474 32(suppl 1)(2005), pp. S43-S51
- 475 13. R. Klaes, *et al.* **Overexpression of p16(INK4A) as a specific marker for dysplastic and neoplastic**  
476 **epithelial cells of the cervix uteri** Int J Cancer, 92(2001), pp. 276-284
- 477 14. I. Tsoumpou, *et al.* **p16INK4a immunostaining in cytological and histological specimens from**  
478 **the uterine cervix: a systematic review and meta-analysis** Cancer Treat. Rev., 35(2009), pp.  
479 210-220

- 480 15. A.A. Al-Darwish, *et al.* **Knowledge about cervical cancer early warning signs and symptoms, risk**  
481 **factors and vaccination among students at a medical school in Al-Ahsa, Kingdom of Saudi**  
482 **Arabia** Asian Pac. J. Cancer Prev., 14 (2014), pp. 2529-2532
- 483 16. F.S. Alhamlan, *et al.* **Human papillomaviruses: the cervical cancer saga in developing countries**  
484 J. Infect. Dev. Ctries., 11(2017), pp. 819-825
- 485 17. G.C. Tan, *et al.* **Immunohistochemical study of p16 INK4A and survivin expressions in cervical**  
486 **squamous neoplasm** Indian J. Pathol .Microbiol., 53(2010), pp. 1-6
- 487 18. M.K. Chalooob, A.G. Hussein, B.J. Qasim **Correlation of p16 (INK4A) and CK17 to HPV**  
488 **(16E6+18E6) in premalignant and malignant lesions of uterine cervix: a clinicopathologic study**  
489 Iran J. Pathol., 11(2016), pp. 377-390
- 490 19. A.-M. de Roda Husman, *et al.* **The use of general primers GP5 and GP6 elongated at their 3'**  
491 **ends with adjacent highly conserved sequences improves human papillomavirus detection by**  
492 **PCR** J. Gen. Virol., 76(1995), pp. 1057-62. Available from:  
493 <https://www.microbiologyresearch.org/content/journal/jgv/10.1099/0022-1317-76-4-1057>
- 494 20. J.S. Smith, *et al.* **Human papillomavirus type distribution in invasive cervical cancer and high-**  
495 **grade cervical lesions: a meta-analysis update** Int. J. Cancer, 121(2007), pp. 621-632
- 496 21. F.S. Alhamlan, *et al.* **Clinical comparison of two human papillomavirus detection assays:**  
497 **GenoFlow vs. Reverse Line Blot: promising HPV-DNA detection assays** J. Infect. Dev. Ctries.,  
498 14(2020), pp. 97-103. doi: 10.3855/jidc.11769
- 499 22. L. Rodríguez-Carunchio, *et al.* **HPV-negative carcinoma of the uterine cervix: a distinct type of**  
500 **cervical cancer with poor prognosis** BJOG An. Int. J. Obstet. Gynaecol., 122(2015), pp. 119-27  
501 Available from: <https://doi.org/10.1111/1471-0528.13071>

- 502 23. J. Lei, *et al.* **High-risk human papillomavirus status and prognosis in invasive cervical cancer: a**  
503 **nationwide cohort study** PLOS Med., Oct 1. 15(10)(2018), e1002666. doi:  
504 10.1371/journal.pmed.1002666
- 505 24. M. Narisawa-Saito, T, Kiyono **Basic mechanisms of high-risk human papillomavirus-induced**  
506 **carcinogenesis: roles of E6 and E7 proteins** Cancer Sci., 98(2007), pp. 1505-1511
- 507 25. T. Crook, K.H.Vousden **Properties of p53 mutations detected in primary and secondary cervical**  
508 **cancers suggest mechanisms of metastasis and involvement of environmental carcinogens**  
509 EMBO J., 11(1992), pp. 3935-3940
- 510 26. W. Tjalma **HPV negative cervical cancers and primary HPV screening** Facts Views Vis. Obgyn.,  
511 10(2018), pp. 107-113
- 512 27. M. Schiffman, *et al.* **Relative performance of HPV and cytology components of cotesting in**  
513 **cervical screening** J. Natl. Cancer Inst., 110(2018), pp. 501-508
- 514 28. K. Cuschieri, N. Wentzensen **Human papillomavirus mRNA and p16 detection as biomarkers for**  
515 **the improved diagnosis of cervical neoplasia** Cancer Epidemiol. Biomarkers Prev., 17(2008), pp.  
516 2536-2545
- 517 29. L.F. Xi, *et al.* **Viral load in the natural history of human papillomavirus type 16 infection: a**  
518 **nested case-control study** J. Infect. Dis., 203(2011), pp. 1425-1433
- 519 30. X. Carcopino, *et al.* **Significance of HPV 16 and 18 viral load quantitation in women referred for**  
520 **colposcopy** J. Med. Virol., 84(2012), pp. 306-313
- 521 31. P.E. Gravitt, *et al.* **High load for most high risk human papillomavirus genotypes is associated**  
522 **with prevalent cervical cancer precursors but only HPV16 load predicts the development of**  
523 **incident disease** Int. J. Cancer, 121(2007), pp. 2787-2793

- 524 32. H. Sarwath, *et al.* **Introduction of p16INK4a as a surrogate biomarker for HPV in women with**  
525 **invasive cervical cancer in Sudan** *Infect. Agent Cancer*, Sep 30;12:50(2017),  
526 doi:10.1186/s13027-017-0159-0
- 527 33. V.V. Sahasrabudde, P. Luhn, N. Wentzensen **Human papillomavirus and cervical cancer:**  
528 **biomarkers for improved prevention efforts** *Future Microbiol.*, 6(2011), pp. 1083-1098.  
529 doi:10.2217/fmb.11.87

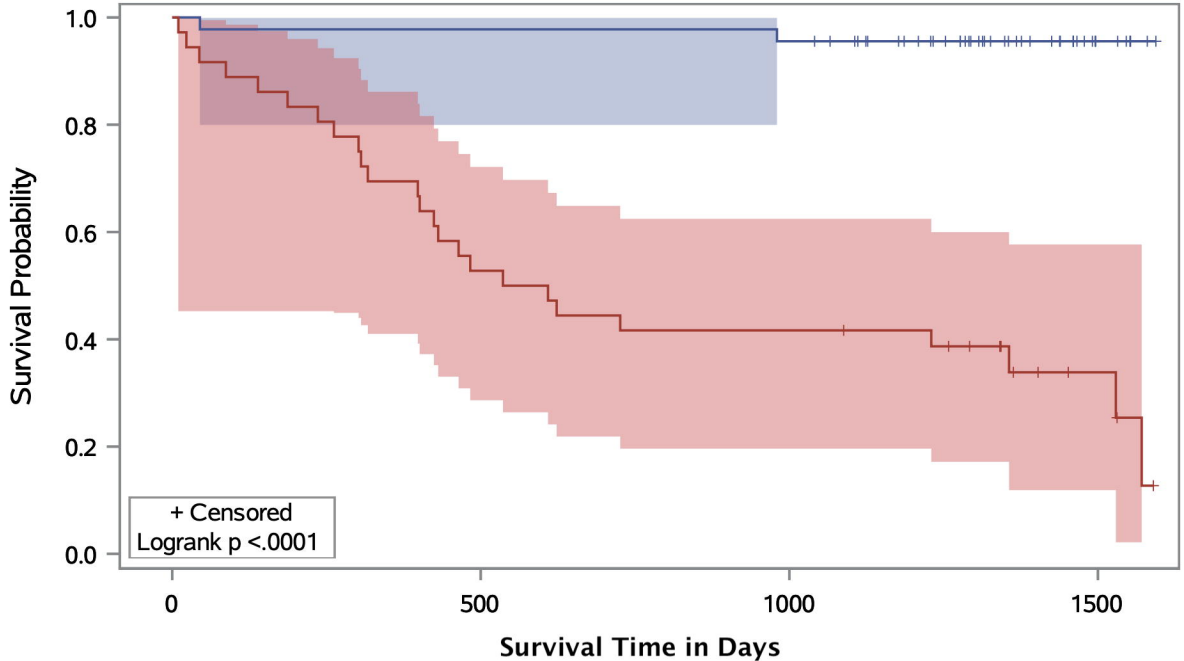
Histology



# The LIFETEST Procedure

## Product-Limit Survival Estimates

With Number of Subjects at Risk and 95% Hall-Wellner Bands



No. At Risk

Cervical Cancer — 0 — 1

0	45	44	43	6
1	36	19	15	4

