

Title: Dementias Platform UK Clinical Studies and Great Minds register: Protocol of a targeted brain health studies re-contact database

Author names: Ivan Koychev¹, Simon Young¹, Heather Holve¹, Michael Ben Yehuda¹, John Gallacher¹

Affiliations; Department of Psychiatry, University of Oxford, UK

Corresponding author: Ivan Koychev, Department of Psychiatry, Warneford Hospital, Warneford Lane, Oxford, OX37JX UK. Email: ivan.koychev@psych.ox.ac.uk

Abstract

Introduction

Efforts to de-risk neurodegenerative research have been hampered by the expense and time required to gather the rich longitudinal data needed for stratified experimental study recruitment. Dementias Platform UK (DPUK) is a public-private partnership that brings together data from over 40 cohorts in a standardised framework, which represents an until now unavailable opportunity to create such a resource through a streamlined brain health re-contact platform based on existing cohorts, as well as prospectively collected data.

Methods and analysis

The DPUK re-contact platform consists of an opt-in (Great Minds, GM) and an opt-out component (Clinical Studies register, CSR). GM requires invited DPUK cohort participants to consent to targeted re-contact at the GM website. Participants complete prospective browser- and smartphone-based cognitive tests and are given the option for remote genetic and actigraphy testing. The GM data is linked to the retrospective DPUK cohort dataset, including genotypic and longitudinal phenotypic data. The CSR is a solution for cohorts explicitly allowing targeted re-contact. Approved studies provide pre-screening criteria on the basis of the CSR/GM dataset, and individuals meeting these criteria are offered participation directly (GM) or through the parent DPUK cohort (CSR).

Ethics and dissemination

The database was approved by the South Central - Oxford C Research Ethics Committee, reference 18/SC/0268 on the 27th of June 2018 and amended on the 1st of November 2019. The availability of the Register to researchers will be disseminated through DPUK's official communication channels as well as national and international scientific meetings.

Article Summary

Strengths and limitations of this study

- Solution for stratified recruitment into brain health studies on the basis of genetics and cross-cohort retrospective phenotypic data
- Prospective standardised data collection: medical history, cognition, actigraphy
- Explicit consent for re-contact on the basis of perceived dementia risk
- Recruitment on the basis of retrospective data limited by data variance between cohorts
- Limited scope for recruitment of symptomatic individuals due to need to register interest for research and respond to study offers through digital technology

Key words: Dementia, stratified recruitment, research database

Introduction

The case for a new generation of highly targeted and informative clinical studies in dementia is strong¹. Although dementia is the disorder with the greatest unmet need, over the last 20 years there has been a near 100% failure in the development of new drug treatments². In many cases, drugs have failed in extremely expensive phase III programmes due to lack of efficacy. While many reasons underlie this failure, they centre on an inability to demonstrate target engagement and impact in clearly defined populations, i.e. an inability to recruit well characterised individuals to experimental medicine programmes and early phase trials.

The lack of success in the development of effective treatments for diseases that cause dementia is an ongoing public health challenge from which the pharmaceutical industry is disinvesting. For example, only 3.8% of experimental medicinal products in the drug discovery phase, and 1.2% in phase III target dementia, compared with 31% and 24% respectively for cancer³.

Dementias Platform UK (DPUK) is a public-private partnership funded by the Medical Research Council that aims to accelerate dementia research by bringing together longitudinal phenotypic as well as genotypic information from over 40 cohort studies⁴. Such longitudinal data is critical for the identification of participants at high risk for dementia while still in preclinical or prodromal stages⁵. Thus, DPUK is in a unique position to establish the infrastructure to offer highly characterised individuals an opportunity to consent to targeted experimental studies and clinical trials. By enabling rapid and cost-effective recruitment of accurately characterised individuals to clinical studies, a major component of dementia drug development can be substantially de-risked.

To enable a new generation of highly targeted clinical studies, DPUK has established a register of highly characterised individuals who have consented to be re-contacted for dementia and brain health focused clinical research: the DPUK Clinical Studies and Great Minds register (CSR/GM). By combining detailed phenotyping and, where available, genomic data from cohorts, this register enables risk stratification per hypothesis at a level of detail and convenience that would not be otherwise available. The CSR includes participants with pre-existing consent for re-contact through their parent DPUK cohort. Participant selection thus relies only on existing cohort data. GM is a subsample of participants in the CSR who have specifically agreed to be contacted about dementia-focused studies. In addition to relying on cohort-based data, GM collects data longitudinally (cognition through web- and smartphone-based methods, medical conditions, level of anxiety and depression symptoms) to ensure the database critical for stratification is both up-to-date and standardised between individuals from different cohorts. Through the provision of a currently unavailable platform for stratified recruitment into experimental studies and clinical trials, GM will create increased academic opportunity and renewed industry interest in developing new dementia therapies.

Methods and Analysis

Register Design

The DPUK CSR/GM is a platform designed to foster highly targeted clinical studies for conditions that cause or contribute to dementia by offering participation in clinical studies to individuals who have already undergone extensive phenotyping. Conditions of interest include Alzheimer's disease but also other causes of dementia. Studies focusing on aging processes and brain health in general will also be a priority. The CSR comprises individuals who have already provided a consent for re-contact to the DPUK cohort to which they were originally recruited. DPUK therefore assists such cohorts by providing a platform for efficient selection of participants and recruitment into studies on the basis of pre-existing cohort data. Joining the CSR proceeds on an opt-out basis, i.e. participants of cohorts joining the DPUK CSR will be informed that they are joining the CSR platform unless they decline. GM, in contrast, is the part of the platform whereby participants have explicitly consented to be contacted regarding dementia and brain health studies (i.e. opt-in process), and it features additional remote testing (genetics, actigraphy).

Prospective GM participants are approached by their DPUK parent cohorts who offer GM registration details (the GM webpage; <https://www.greatmindsfordementia.uk>). DPUK cohorts may choose to offer assistance with the GM sign-up (e.g. a home visit). On entering the website, the participants have access to the information sheet and complete a membership profile (requiring e-mail and password). On confirming their e-mail, participants are given the option of signing an e-consent. On the website, participants provide basic demographic and medical history information, their level of anxiety and depression symptoms, complete cognitive tasks, and are given the option of recording their preferences for mode of contact and type of studies in which they are interested.

The GM dataset contains a limited number of variables relevant to dementia risk, including self-reported age and family history, cohort-derived genetics (APOE4 and/or polygenic risk score) and imaging data, as available. Additional variables held by the parent cohort are accessible on a study-by-study basis. To inform study exclusion criteria, the register contains information on significant comorbidity, as well as history of magnetic resonance imaging (MRI) testing. GM also gathers cognitive data recorded through the register website and a smartphone app at registration and six-monthly intervals following consent.

Primary Objective (GM)

To establish a dementia-specific clinical studies register based on existing DPUK cohort data.

Primary Outcome (GM)

Number of DPUK cohort participants providing consent for clinical studies re-contact.

Secondary Objective (GM)

1. To establish the sustainability the DPUK GM.
2. To establish the capacity of clinical studies recruitment through the DPUK GM Participant Identification and Recruitment.

Secondary Outcome (GM)

1. Participant with up-to-date GM data.
2. Numbers of DPUK GM participants screened and enrolled into dementia clinical studies.

CSR Participants

The CSR pool of participants consists of the participants recruited to one of DPUK's constituent cohorts who have a valid consent for re-contact and who have not declined to be included in the CSR.

CSR Inclusion Criteria

- Male or Female adults aged more than 18 years.
- Existing valid consent for re-contact for research studies through their DPUK constituent cohort.

CSR Exclusion Criteria

- Explicit objection to being included in the CSR after being informed about this opportunity by their DPUK constituent cohort.

GM Participants

GM comprises participants recruited to one of DPUK's constituent cohorts who on approach by their parent cohort agree to be included in the Register.

GM Inclusion Criteria

- Participant is willing and able to give informed consent for participation in the study.
- Male or Female adults aged more than 18 years.

GM Exclusion Criteria

- Participants unwilling or unable to comply with the GM register procedures.
- Participants who through participation in GM Portfolio Studies have been found to lack capacity to consent to research studies.

Portfolio Procedures

Recruitment to the CSR

DPUK cohorts whose procedures already feature explicit consent for research studies re-contact are given the option to join the CSR. Those that agree communicate to their participants in written form notifying them that in the future they may be contacted for studies through the CSR, as well as the parent DPUK cohort. The contact materials feature information on DPUK and the CSR to inform participants' decision whether to opt-out of being contacted through the CSR. Participants are provided with practical means to decline joining the CSR while remaining a participant in the DPUK cohort. Those that do not opt-out are deemed recruited to the CSR. Membership of the CSR does not involve the collection of information in addition to the approved procedures of the DPUK cohort. Until a person is recruited into a study or joins GM, CSR members' contact details are stored by the cohort owner only (unless the cohort owners decide to share those details with the CSR for efficiency purposes).

Recruitment to GM

Parent cohorts (defined as being any of DPUK's constituent cohorts) invite their participants to consider joining GM, providing information materials and DPUK contact details, as well as a unique code that is needed for registration to GM and linkage to the DPUK parent dataset. Contact details comprise a link to a GM dedicated website and a helpline. Helpline protocols include escalation procedures so that specialist questions can be addressed. On entering the website, the participant is presented with an online version of the GM information sheet. Subjects are then invited to create a profile (requiring an e-mail, password, and the unique code).

Upon completion of the e-consent form (this requires typing in name and date), the participant's personal contact details (name, address, telephone number, and email address) are requested. Participants are asked to provide demographic information (age, level of education), as well as whether they have been diagnosed with a cognitive disorder (dementia, mild cognitive impairment, subjective cognitive impairment or none), significant comorbidities (e.g. diabetes, stroke, epilepsy, depression), significant MRI risks (metal in body including pacemaker), and if they have a first-degree relative with dementia. Participants are also given the option to express a preference for mode of contact, as well as the types of studies (questionnaires, observational studies, clinical trials) and interventions (MRI, LP, cognitive or genetics testing) that they would be willing to undertake. Participants are also asked to provide information on their likely availability for study visits (less than two days per year; two to three days per year; three to 10 days per year; more than 10 days per year) and preferred time of day for contact. Membership of GM is deemed to have occurred once the GM e-consent form and personal contact details have been provided. Once registered, participants are redirected to the members' area where they can access educational and GM community materials, as well as choose to withdraw from GM without needing to give a reason. Upon membership, GM generates a notification to the parent cohort (using the unique ID provided to the participant by the parent cohort to access GM) to update their records and to request access to data collected by the cohort as part of their routine procedures.

Recruitment to Portfolio Studies

Any investigator wishing to recruit from the CSR/GM into an experimental medicine study or clinical study (a 'GM Portfolio Study') must follow a multi-stage process. CSR and GM metadata and metadata search tools (suitably managed to preclude identification) are available to registered researchers on the CSR/GM website for study feasibility assessments prior to ethics application (see Figures 1 and 2 for a graphical representation of the tool and its output). The criteria for including a study in the CSR/GM Portfolio are:

- a. The protocol is finalised and research ethics committee approval has been obtained;
- b. Full funding has been achieved or funding contingent on CSR/GM approval has been agreed;
- c. The study falls within the remit of the CSR/GM (any medical study for the CSR; dementia or brain health focused experimental medicine for GM);
- d. They fall within the scope of the CSR/GM. For example, studies that do not require access to highly characterised individuals to answer their research question will be considered out of scope.

CSR/GM subjects eligible for a Portfolio Study are contacted by the CSR/GM and given study details. The contact details of those members who agree to receive further information on the study are forwarded to the Portfolio Study team.

Informed Consents

Informed Consent for CSR Participation

Only individuals with existing DPUK parent cohort consent that allows re-contact for future studies are recruited to the CSR.

Informed Consent for GM Participation

On entry to the GM website, the participant is presented with an electronic consent and must personally agree to it by typing their name in before any GM-specific procedures are performed. This requests consent for i) re-contact for recruitment to clinical studies that have received independent research ethics committee approval and have been adopted as a DPUK portfolio study; ii) recognition and acceptance that participants may be approached by studies on the basis of their dementia risk and iii) sharing contact details with the parent cohort in order to access to existing cohort data for the sole purpose of risk stratification in relation to study recruitment.

The participant is allowed as much time as needed to consider the information, and the opportunity to discuss joining GM with the GM team through its helpline before deciding whether to participate in the register.

CSR Assessments

Participation in the CSR does not involve any additional assessments beyond the usual procedures of the DPUK parent cohort.

GM Assessments

We record cognitive information through web-based cognitive tests, as well as a cognitive smartphone-based application (if participants have an appropriate smartphone). Participants are offered optional genotyping and actigraphy assessment.

GM Cognitive testing

For the purposes of website-based cognitive testing we use a browser-optimised version of the Paired Associates Learning (PAL) task that is part of Cambridge Neuropsychological Test Automated Battery (CANTAB, Cambridge Cognition Ltd. <https://www.cambridgecognition.com/>). The PAL task is a well-validated measure of episodic memory with a large normative database available from the developer. Instructions on how to complete the task are played through a pre-recorded audio message. In the task boxes are displayed on the screen and are “opened” in a randomised order. One or more of them contain a pattern. The patterns are then displayed in the middle of the screen, one at a time and the participant must select the box in which the pattern was originally located. If the participant makes an error, the boxes are opened in sequence again to remind the participant of the locations of the patterns. Increased difficulty levels can be used to test high-functioning, healthy individuals. Participants complete the task at GM registration and then at six-month intervals (they are invited to log-in again to the GM website and complete the task). The task is hosted on the Cambridge Cognition servers and selected

age- and sex-adjusted outcome measures are transferred to GM on the test completion. For the purposes of participant selection, the total number of errors of commission for the whole task as well as its most difficult level, adjusted for the estimated number of errors they would have made on any problems, attempts and recalls they did not reach (PALTEA28 and PALTEA8 variables, respectively). Only demographic data (age, sex, and education level), and no personal information, are made available to Cambridge Cognition for the purposes of comparing individuals' performance against normative databases.

GM Questionnaire Measures

Following completion of the cognitive testing, participants are required to complete two self-reported questionnaires measuring anxiety and depression (PHQ-8 and GAD-7 respectively). GAD-7 is a seven-item scale for assessment of anxiety where items are scored 0-3 depending on the severity of each symptom. PHQ-8 is also a brief self-reported questionnaire where participants score eight depressive symptoms 0-3 depending on their severity.

See Table 1 for a schedule of GM assessments and Figure 3 for a flowchart of participant contact.

Visit Type	Registration	Assessment Phase					
	Baseline	2 Months	4 Months	6 Months	8 Months	10 Months	12 Months
Time (Months)	0	2	4	6	8	10	12
E-Consent	X						
Personal Details	X			X			X
Medical History	X			X			X
CANTAB PAL Testing	X			X			X
Depression and Anxiety Inventories	X			X			X
Smartphone Schedule	X			X			X
Genetic testing ¹	X						
Actigraphy testing ¹	X						X

GM Smartphones based assessments

Participants who have access to smartphones are also offered to take part in smartphone-based cognitive testing. The Mezurio smartphone application is a dementia-targeted collection of cognitive tasks (developed by a collaboration between the Oxford University Department of Psychiatry, Roche Pharmaceuticals and Eli-Lilly pharmaceuticals), released under an open-source, open-science approach⁶. Mezurio features a variety of cognitive tasks, including: i) an episodic memory task, reliant on the regions of the medial temporal lobe. In this task participants are presented with photos of objects, which they are prompted to associate with one of three directions (left, right or up). Participants are asked to recollect the associations at regular intra- and inter-day intervals; ii) A language task in which participants are presented with consecutive frames from archive comic strips. Participants are asked to use the comic frames to narrate a story aloud; they are then asked to retell the story in immediate and delayed (~24 hours) free recall tasks. Speech data are collected via the smartphone device in order to analyse the physical, semantic, and linguistic properties of the stories; iii) An executive function task requiring participants to manually tilt the phone along two axes in order to move a central counter and 'burst' presented shapes according to the designated sequence; the task is designed to maximise user engagement.

Upon entry to GM, all participants who choose to download the Mezurio application complete six days of practice, allowing them to set schedule preferences, and become familiar with the presented tasks. Then, participants are offered to complete 14 further days of testing at baseline, and at six-month intervals thereafter whilst in GM. During periods of testing, participants are asked to complete daily Mezurio cognitive tests (on average < eight minutes per day), with tasks scheduled to occur between once and three times a day.

GM Genetic testing

GM participants are offered to be genotyped remotely. Those that agree are sent a saliva testing kit which is a saliva collection device that stabilizes DNA long term in a 2 or 1 ml solution. The collector is pre-filled and has a simple screw-on funnel for simple saliva delivery directly into the non-toxic stabilisation buffer. The saliva collection tube clearly indicates the volume of saliva required after which the funnel is removed, and the cap replaced. The device is fully specified for sample transport and storage. Once the sample is collected participants are required to send it back to the study team in a pre-paid envelope that is appropriate for transfer of biological samples. The samples are collected at the University of Oxford and transferred to a facility specialised in DNA extraction and analysis. The facility uploads the resulting data on the dedicated secure DPUK genetics platform. Once analysed for the purposes of GM, the samples are destroyed.

GM Actigraphy testing

GM participants are offered to take part in regular monitoring of activity through a wrist-worn actigraph. Those that agree are sent actigraphs through the post and are required to wear them for seven days at a time. Once completed the participants are required to send back the devices back to the study team in a pre-paid envelope.

GM Variables

The standardised tests included in GM will generate a standardised prospective dataset that will enrich the risk stratification options offered by the retrospective parent DPUK cohort data. For the web-browser based cognitive testing, outcome measures include the errors made by the participant, the number of trials required to locate the pattern(s) correctly, memory scores and stages completed. For the questionnaires, the outcome measures are the individual item and total item scores. For the smartphone-based cognitive testing, summary statistics are generated, including error rate for each of the tests. The genetic testing yields APOE4 carriership status, as well as polygenic risk scores related to dementia. The actigraphs generate variables reflecting levels of activity across the day.

GM Disclosure Risk Procedures

The purpose of GM is to offer targeted dementia and brain health studies to participants with a wealth of phenotypic and genotypic data. Being approached by a study on the basis of variables relevant to dementia may implicitly disclose risk for dementia where this is not desired or appropriate. We seek to minimise this risk through the following safeguards: i) joining the Register is contingent on participants providing informed consent that being on the Register means they may be contacted by studies on the basis of their perceived dementia risk; ii) every GM Portfolio Study has its own consent that includes safeguards on dementia risk disclosure as appropriate.

Participant and Public Involvement

We are planning to organise regular events where CSR/GM participants will be asked to provide their opinion and suggestions for improvement on i) the processes involved in registration and continued engagement with the programme; ii) the mode of re-contact; iii) the types of studies that GM should prioritise; and iv) ethical and any other issues arising from the CSR/GM involvement. We will integrate the feedback received in future changes to the programme procedures and priorities.

The design of GM and its recruitment website has been informed by a Public and Patient Involvement event organised by Dementias Platform UK with Alzheimer's Society members. Five people attended, represented a range of dementia experiences – caring for those with dementia, familial gene mutation, and dementia diagnosis. The attendees shared their views on the value of registering to be volunteers for clinical trials, and on the risks and benefits of volunteering for a clinical trial.

The main recommendations from this PPI event were on providing clear information about data security and whether GPs might be contacted about outcomes. Following the event, four members signed up to join the Great Minds PPI group which went on to review the GM website before it was launched. The recommendations from the event and the website review group have guided the creation of the Register and the website, with imagery representing a more diverse community and increased signposting to data security and data privacy.

Discontinuation/Withdrawal of Participants from Register

CSR/GM participants are free to withdraw from the register at any time, for any reason, without prejudice to future care, and with no obligation to give the reason for withdrawal. Upon leaving the CSR/GM, participants stop receiving offers for participation in future studies. Loss of capacity to consent is monitored through participation in CSR/GM Portfolio Studies – sharing with us instances where a GM participant did not have capacity to provide informed consent was a condition set out in Data Sharing

Agreements with Portfolio Studies. Such participants are withdrawn from GM and are not informed of future studies.

Upon leaving the Register, all personal identifiable data, apart from an administrative record of past membership are deleted from the Register servers (i.e. the unique identifier supplied by the parent cohort). In the case of GM, participants can request that data held on the servers of any suppliers or partners to GM, including Cambridge Cognition and the Mezurio app servers, are deleted as well. Participants can also request that all de-identified research data collected by GM are deleted as well.

Participants are also withdrawn from GM if they lose capacity to consent to the register. Portfolio studies have the obligation to feedback to GM where a participant was found to lack capacity. GM staff must inform the participant of the decision to be withdrawn from GM.

Data Analysis and Sample Size

Description of Statistical Methods

We will use descriptive statistics to assess the primary and secondary outcome measures (number of participants registered, number withdrawing formally from GM, website and smartphone app data completion metrics, number recruited into clinical studies).

A participant selection tool (PST) has been developed to query the CSR and GM databases on an individual level according to pre-specified study criteria. Identified individuals will then be offered participation in the study according to the methods described earlier.

The Number of Participants

The number of participants is not defined but is limited by the total number of DPUK members.

Ethics and dissemination

The database was approved by the South Central - Oxford C Research Ethics Committee, reference 18/SC/0268 on the 27th of June 2018 and amended on the 1st of November 2019. The availability of the Register to researchers will be disseminated through DPUK's official communication channels as well as national and international scientific meetings.

Current recruitment

Recruitment to GM began in January 2018 through the Airwave⁸ and HealthWise Wales⁹ cohorts. Membership as of 11th of May 2020 stands at 3,166 with 1,709 having completed the cognitive battery. A further 622 individuals have downloaded and interacted with the Mezurio cognitive app. 41 individuals have withdrawn and requested that their data is deleted. Membership of the CSR stands at 53,245 individuals (Airwave cohort⁸) of whom 18,786 have been genotyped and 31,561 have had in-clinic cognitive testing.

Conclusions

Stratified recruitment into early phase experimental medicine studies is key to de-risking and increasing investment in neuroscience research and development. The DPUK re-contact platform described provides a novel opportunity to accelerate research into novel dementia treatment through the linkage of highly characterised individuals with researchers.

Author Contributions: Ivan Koychev and John Gallacher designed and drafted the first protocol of the Register; Simon Young and Heather Holve led on the project management of the Register; Michael Ben Yehuda tested the Register information technology infrastructure and provided feedback on the design. All co-authors have revised and contributed to the manuscript.

Funding statement: This work was supported by the Medical Research Council Dementias grant number MR/L023784/2.

Competing interests statement: The authors report no competing interests.

Data statement: Access to the Great Minds dataset can be requested through the DPUK Data Access application.

Word Count: 3,921

References

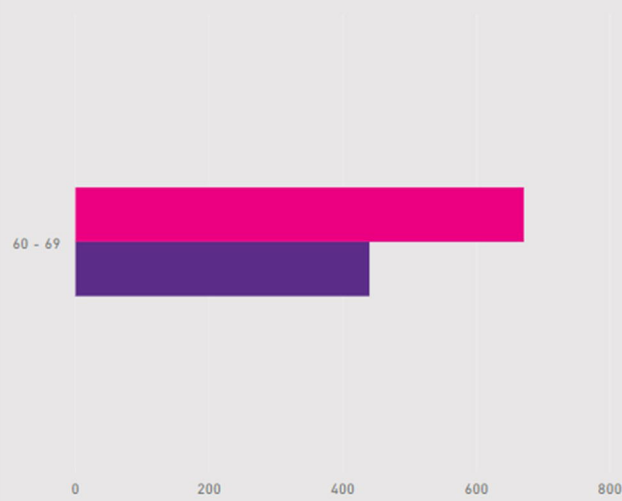
1. Sperling RA, Jack CR, Jr., Aisen PS. Testing the right target and right drug at the right stage. *Science translational medicine* 2011;**3**(111):111cm33.
2. Cummings J, Lee G, Ritter A, et al. Alzheimer's disease drug development pipeline: 2019. *Alzheimer's & dementia* 2019;**5**:272-93.
3. al. Me. Dementia: The R&D landscape. *Secondary Dementia: The R&D landscape* 2015. <https://worlddementiacouncil.wordpress.com>
4. Bauermeister S, Orton C, Thompson S, et al. The Dementias Platform UK (DPUK) Data Portal. *European journal of epidemiology* 2020.
5. Insel PS, Palmqvist S, Mackin RS, et al. Assessing risk for preclinical beta-amyloid pathology with APOE, cognitive, and demographic information. *Alzheimer's & dementia* 2016;**4**:76-84.
6. Lancaster C, Koychev I, Blane J, et al. Evaluating the Feasibility of Frequent Cognitive Assessment Using the Mezurio Smartphone App: Observational and Interview Study in Adults With Elevated Dementia Risk. *JMIR mHealth and uHealth* 2020;**8**(4):e16142.
7. Lancaster C, Koychev I, Blane J, et al. Gallery Game: Smartphone-based assessment of long-term memory in adults at risk of Alzheimer's disease. *J Clin Exp Neuropsychol* 2020;**42**(4):329-43.
8. Elliott P, Vergnaud AC, Singh D, et al. The Airwave Health Monitoring Study of police officers and staff in Great Britain: rationale, design and methods. *Environmental research* 2014;**134**:280-5.
9. Hurt L, Ashfield-Watt P, Townson J, et al. Cohort profile: HealthWise Wales. A research register and population health data platform with linkage to National Health Service data sets in Wales. *BMJ open* 2019;**9**(12):e031705.

1111
Selected participants

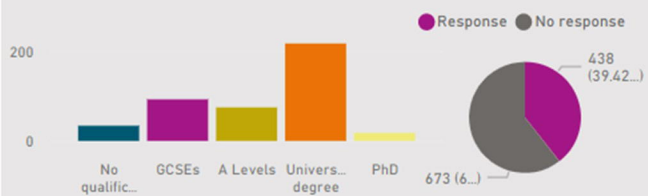
671
440
No response 0

Age band and gender

Female Male

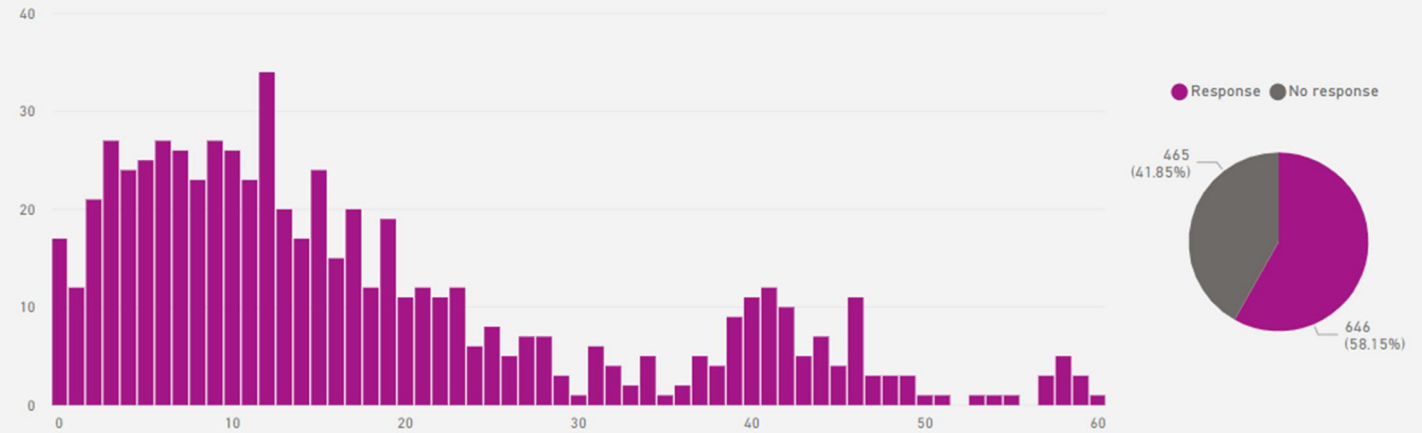


Highest educational level

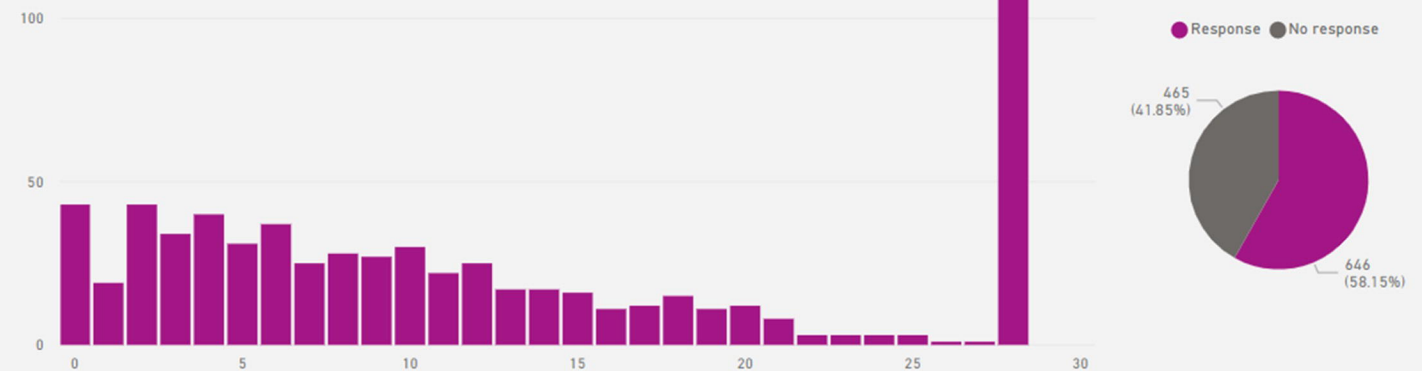


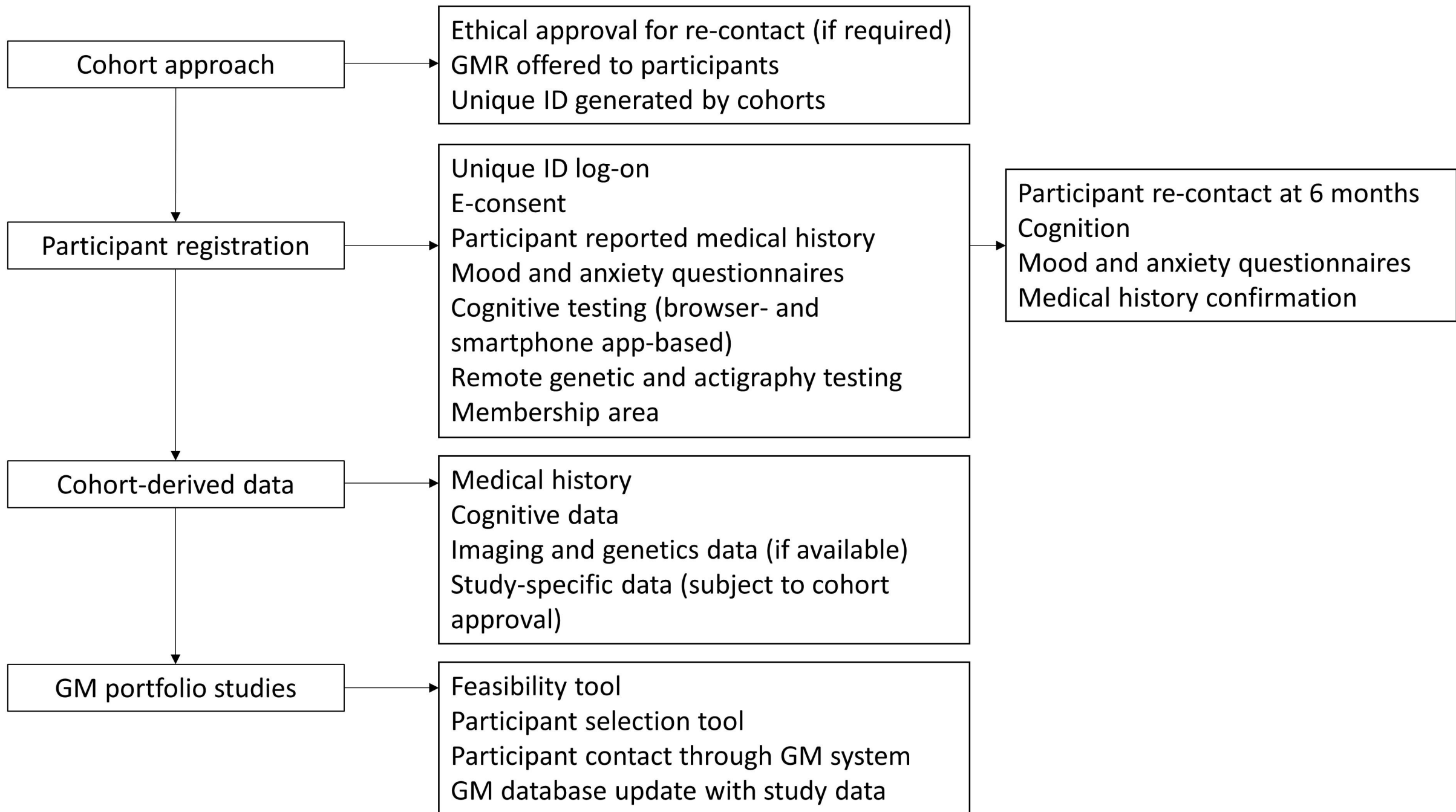
PALTEA28 raw score (CANTAB)

Show z-scores →



PALTEA8 raw score (CANTAB)





Demographics

Age band

- 10 - 19
- 20 - 29
- 30 - 39
- 40 - 49
- 50 - 59
- 60 - 69
- 70 - 79
- 80 - 89
- 90 - 99

Gender

- Female
- Male

Highest educational level

- No qualifications
- GCSEs
- A Levels
- University degree
- PhD
- No response

Ever had a diagnosis of:

Dementia

- No
- Yes
- No response

Mild cognitive impairment

- No
- Yes
- No response

Memory problems

- No
- Yes
- No response

History of stroke

- No
- Yes
- No response

Diabetes

- No
- Yes
- No response

Parkinson's disease

- No
- Yes
- No response

Other neurological condition

- No
- Yes
- No response

High blood pressure

- No
- Yes
- No response

History of seizures/fits

- No
- Yes
- No response

History

Family history of dementia

- No
- Yes
- No response

Any metal in body

- No
- Yes
- No response

Anxiety score

GAD-7 score

- Response
- No response

0 21



Depression score

PHQ-8 score

- Response
- No response

0 24



Mood impact on daily function

- Not applicable
- Not difficult at all
- Somewhat difficult
- Very difficult
- Extremely difficult
- No response

CANTAB paired-associates learning test

PALTEA28 score (CANTAB)

- Response
- No response

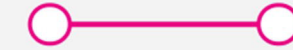
Raw score

0 65



Z-score

-2.33 2.33



PALTEA8 score (CANTAB)

- Response
- No response

Raw score

0 29



Preferences

What type of studies would you consider taking part in?

Clinical trials

- No
- Yes
- No response

Questionnaire-based studies

- No
- Yes
- No response

Observational studies

- No
- Yes
- No response

I am open to any brain health related studies

- No
- Yes
- No response

What type of assessments would you consider having?

Lumbar puncture

- No
- Yes
- No response

Magnetic resonance imaging

- No
- Yes
- No response

Positron-emission tomography

- No
- Yes
- No response

Cognitive tests

- No
- Yes
- No response

Connected devices

- No
- Yes
- No response

I am open to any brain health related tests

- No
- Yes
- No response

3076
Selected participants