

1
2
3
4
5
6
7
8
9
10
11
12
13
14
15
16
17
18
19
20
21
22

The misleading illusion of COVID-19 confirmed case data: alternative estimates and a monitoring tool

Short title: Estimates of COVID-19 and a monitoring tool

Rogelio Macías-Ordóñez ^{1*}, Damián Villaseñor-Amador ²

¹ Red de Biología Evolutiva, Instituto de Ecología, A.C., Xalapa, Veracruz, Mexico

² Facultad de Ciencias Biológicas, Benemérita Universidad Autónoma de Puebla, Puebla, Puebla, Mexico

Corresponding author

E-mail: rogelio.macias@inecol.mx

23 **Abstract**

24 *Confirmed Case Data* have been widely cited during the current COVID-19 pandemic as
25 an estimate of the spread of the SARS-CoV-2 virus. However, their central role in
26 media, official reports and decision-making may be undeserved and misleading.
27 Previously published Infection Fatality Rates were weighted by age structure in the 50
28 countries with more reported deaths to obtain country-specific rates. For each country,
29 the number of infections up to the Infection Date (23 days ago = Incubation Period +
30 Onset to Death period) and the present percentage of immune population were
31 estimated using Infection Fatality Rate, the number of reported deaths (which is less
32 prone to undersampling), and projecting back to Infection Date. We then estimated a
33 Detection Index for each country as the percentage of estimated infections that
34 confirmed cases represent. Assuming that detection remains constant after Infection
35 Date, we estimated the number of deaths and the estimated percentage of the
36 population of each country expected to be immune up to 23 days into the future.
37 Estimated Infection Fatality Rates are higher in Europe. In most countries, confirmed
38 cases currently represent less than 30% of estimated infections on Infection Date, and
39 this value decreases with time. Countries with flat curves throughout the pandemic
40 show the lowest immunity percentages and these values seem unlikely to change in the
41 near future, suggesting that they remain vulnerable to new outbreaks. Estimates for
42 some countries with low Infection Fatality Rates suggest a still steep increase in the
43 number of casualties in the next three weeks. Countries that did not control initial
44 outbreaks seem to have reached higher immunity percentages, although mostly still

45 under 5%. We provide the code to monitor the trajectories of these estimates in 178
46 countries throughout the COVID-19 pandemic.

47
48
49

50 **Introduction**

51 COVID-19 *confirmed case data* (CCD) are the central piece of information in most
52 news, official reports, conversations, forecasting efforts, and are also probably central to
53 most decisions made by authorities worldwide since the pandemic outbreak in
54 December 2019. However, it is widely known that they represent a small and unknown
55 fraction of the actual number of SARS-CoV-2 infections [1-4], we just do not know how
56 small. Especially hard to assess is the number of asymptomatic but contagious
57 infections [5-8], as asymptomatic carriers are unlikely to seek testing.

58 Elementary sampling theory and recent supported opinions [3,6,9] suggest that
59 CCD are highly dependent on the testing effort and sampling protocol, among other
60 factors. Unless a randomized and standardized sampling protocol of the whole
61 population is carried out, there is no *a priori* reason to assume they are representative
62 of the magnitude or even the speed of the spread of this or any other virus.
63 Furthermore, unless similar testing efforts are made in different countries, the data are
64 not comparable, and pooling them may provide an even worse picture of the spread of
65 the virus worldwide. COVID-19 related deaths data are reported nearly as much, but
66 there is less focus on them. These data, however, are less prone to sampling error [2,3],
67 unless a large number of COVID-19 related deaths go undetected, misdiagnosed, or

68 unreported [10,11]. Therefore, if they can be used to estimate the number of infections,
69 they may provide a much sharper picture of the spread of the disease.

70 The Infection Fatality Rate (IFR, sometimes referred to as “Infection Fatality
71 Ratio”) can do just that. It is defined as the percentage of cases infected with a given
72 disease, symptomatic or not, that eventually die [12]. Thus, if we know the IFR in a
73 given population and the number of deaths, we can estimate the number of people that
74 were infected around the same date in which those who eventually died got infected.
75 The difference between the number of deaths and such estimate is an estimate of the
76 number of people who have recovered and are now immune. The drawback is that such
77 estimates provide a picture of the spread of the disease up to the date when people
78 reported death today were initially infected. That is IP+ODP days ago, where IP is the
79 Incubation Period and ODP is the Onset to Death Period; estimated to be 5.2 [13,14]
80 and 17.8 d [12] respectively for COVID-19. However, comparing CCD and the number
81 of cases estimated using number of reported deaths even 23 days ago (IP+ODP) may
82 provide a country-specific estimate of the fraction of infections detected by CCD. Such
83 estimates can be compared and calibrated with the picture that antibody surveys should
84 provide, but see Vogel [4], and may even represent a monitoring alternative for
85 countries with little or no access to antibody testing.

86 Since IFR is age dependent, its global value depends on the age structure of the
87 infected population. COVID-19 is known to be more lethal in older age classes
88 [12,15,16, 17], thus we can expect that the more biased the age structure of a given
89 population to such classes, the higher its IFR will be. In order to apply this value to other
90 populations, the IFR of each age class must be weighted by the relative proportion of

91 each age class in the new population in order to have a corrected estimate of the
92 population IFR.

93 In this study, we developed a code in the R Statistical Package [18] with
94 functions to estimate and graph: (1) The IFR of different countries by weighting recently
95 published COVID-19 IFR age specific values [12] by the age structure of each country
96 [19]. (2) The number of people infected up to Infection Date ($l_{dt} = IP + ODP$). (3) A
97 Detection Index (%DI) on l_{dt} as the percentage of confirmed cases to the estimated
98 number of people infected. (4) The percentage of the country's population already
99 recovered and immune up to the present. (5) The number of people infected between
100 l_{dt} and the present date using %DI. (6) The number of deaths expected from those
101 infections in the following $IP + OPD$ days. (7) The percentage of the country's population
102 expected to have recovered and be immune in the following $IP + ODP$ days. We show
103 and discuss estimates up to the date of submission for the 50 countries with the highest
104 values of reported deaths. We provide the R code to obtain daily updated estimates for
105 178 different countries and territories throughout the development of the COVID-19
106 pandemic.

107

108 **Material and methods**

109 A program (*script*) was developed using the R statistical software v 3.6.3 [18]. A fully
110 commented functional version of this script can be downloaded as supporting
111 information (S1 File). Two types of functions are coded, one to graph estimates in
112 countries selected by the user, and another to produce tables with all estimates for
113 countries selected by the user. Relevant constants involved in estimates can be

114 modified in the form of function parameters as explained in S1. It has been recently
115 suggested [20] that sharing fully detailed code and functionality of modeling and
116 monitoring tools is more important than ever to face the current COVID-19 pandemic.
117 This section describes what the script does and the parameters used as default,
118 beginning with the procedure used to obtain the data.

119 The database used for analyses is obtained from the European Centre for
120 Disease Prevention and Control (ECDC) web page [21]. The script includes code lines
121 needed to import the daily updated database with confirmed cases and deaths. The
122 ECDC keeps a daily updated database curated from over 500 sources [22]. We offer
123 the most recent ECDC database up to the date of submission as supporting information
124 (S2 File). Other daily updated repositories, such as 2019 Novel Coronavirus COVID-19
125 (2019-nCoV) Data Repository by Johns Hopkins CSSE [23] or the WHO COVID-19
126 database [24], did not offer the option to automatically download data into a statistical
127 software package. The ECDC database includes reports since December 31, 2019. In
128 contrast, the WHO database offers data since January 8, 2020 and the Johns Hopkins
129 CSSE database since February 23, 2020. No major differences have been detected
130 amongst the three sources [25], but the ECDC has been shown to have the most
131 consistently published and cleanly maintained data [25].

132 An Incubation Period (IP) of 5.2 d was taken from Li et al. [13] and Backer et al.
133 [14], very close in value to that of Lauer et al. [26] of 5.1 d. An Onset to Death Period
134 (ODP) of 17.8 d was taken from Verity et al. [12]. The sum of these two values (23 d) is
135 subtracted from the date of each daily report to obtain the Infection date (Idt), the date
136 at which people that died on the day reported presumably became infected.

137 Age-specific Infection Fatality Rates for COVID-19 were first estimated by Team
138 TNCPERE [15]. At least two more studies [12,16] have suggested adjustments to age-
139 specific IFR values considering potential sampling bias in the original report, or non-
140 uniform infection rates of different age classes. We decided to use the values reported
141 by Verity et al. [12], although other alternatives (S3 File) [15,16] can be used instead as
142 IFR values for each age class can also be specified by the user. Age structure data for
143 178 different countries and territories were obtained from the UN Population Division
144 [19]. The age structure database (provided as S4 File, the R script requires this file) was
145 curated to match the name and geold code used by the ECDC database in order to
146 estimate each country's global IFR. A table with each country's geold code is also
147 provided for reference (S5 File). Each country's global IFR is calculated by weighing
148 each age specific IFR by the proportion of the corresponding age class in the country's
149 population.

150 A country's global IFR and daily reported deaths data are used to estimate the
151 daily number of people that were infected on ldt. The premise supporting this procedure
152 is: for a country with a global IFR of X%, for every X number of deaths reported today,
153 100-X people became infected on the same day (ldt = IP+ODP days ago) and are now
154 presumably immune. The onset to discharge period for COVID-19 cases has been
155 found to be similar or only slightly larger than ODP [12,27]. Cumulative daily estimates
156 of people infected on ldt are obtained by adding all previous daily estimates up to ldt. A
157 country's daily Detection Index on any given day up to ldt (%DI) is estimated as the
158 CCD value on that date x100, divided by the estimate of people infected on the same
159 date.

160 If we assume that infected individuals that did not die recovered and became
161 immune in 23 (IP+ODP) days, in order to estimate how many individuals presently
162 recovered, we need to estimate how many became infected 23 days ago and subtract
163 the present number of deaths. The percentage of each country's population now
164 recovered and immune is estimated by subtracting the present cumulative number of
165 deaths from the present cumulative estimate of people infected up to $I_{dt} \times 100$, and
166 dividing by the reported country's population in 2018 (data from The World Bank Group
167 included in the ECDC database [21]). This value estimates the present percentage of
168 the country's population represented by the estimate of the number of people that
169 became infected, but survived, up to the date in which the deaths reported today
170 became infected.

171 Since the estimated number of infections depends on the number of deaths
172 projected IP+ODP days back, the previous procedure does not allow for estimating the
173 number of people infected between I_{dt} and the present. In order to attempt an estimate
174 of infections up to the present, CCD and %DI are used assuming %DI remains constant
175 from I_{dt} to the present under this premise: for a country with %DI of Y%, for every Y
176 confirmed cases, there are 100-Y more undetected infections. Given that daily %DI
177 varies between days and over time throughout the pandemic (see below), and in order
178 to have the most recent %DI estimate, the %DI value reported and used to estimate the
179 daily number of infections from I_{dt} to the present is the percentage of total estimated
180 infections in a seven day period ending with I_{dt} represented by total CCD in the same
181 period. This value will be referred to as %DI on I_{dt} . If a country is currently reporting no
182 deaths, this %DI value is evaluated for the period ending with the last daily %DI value

183 available. The script also estimates infections from ldt to the present under two
184 scenarios: a two-fold increase of %DI on ldt ($\%DI \times 2$), and a decrease of 50% ($\%DI/2$).
185 Daily estimates are added to cumulative estimates up to ldt to obtain present cumulative
186 estimates.

187 Daily infection estimates from ldt to the present are multiplied by IFR in order to
188 obtain daily estimates of death and survivors from the present up to IP+ODP days in the
189 future. The daily estimated number of deaths is added to the present number of deaths
190 reported in order to estimate the future cumulative number of deaths expected from the
191 present up to IP+ODP days in the future. Likewise, the daily estimated number of
192 survivors is added to the number of survivors estimated up to the present to estimate
193 the future percentage of recovered and immune population in the same period. The
194 same scenarios of increase and decrease in the country's %DI after ldt are considered
195 to provide estimation ranges for the future cumulative number of deaths and for the
196 future percentage of recovered and immune population. Finally, the script calculates the
197 increase percentage by which cumulative number of estimated infections have
198 increased from ldt to the present, the same percentage by which future deaths and
199 percentage of immune population are estimated to increase in 23 days.

200 We obtained estimates for the 50 countries with the greatest number of
201 accumulated deaths on the date of final submission, representing 98.53% of the total
202 number of deaths worldwide (Table 1 and S6 File), and figures representing the
203 trajectory of these estimates in four representative countries: Belgium, United States,
204 Brazil and Japan (these and all the remaining 46 country graphs can be found in the
205 supporting information as S7 File).

206 **Table 1. Data and estimates for the 50 countries with the greatest number of**
 207 **accumulated deaths during the COVID-19 pandemic on May 20, 2020.**

Country	CumDD	CumCCD	IFR	%DI	%RI	CumEI	%FRI	CumFD	%I
United States	91,921	1,528,568	0.96	16	2.91	13,129,216	3.97	125,743	37
United Kingdom	35,341	248,818	1.09	9	4.83	4,291,721	6.38	46,714	32
Italy	32,169	226,699	1.38	6	3.80	2,810,030	4.59	38,828	21
France	28,022	143,427	1.20	4	3.44	2,840,090	4.19	34,096	22
Spain	27,778	232,037	1.21	5	4.86	2,716,154	5.74	32,794	18
Brazil	17,408	271,628	0.59	11	1.39	4,812,456	2.28	28,578	64
Belgium	9,108	55,791	1.14	7	6.94	947,746	8.20	10,774	18
Germany	8,090	176,007	1.30	13	0.74	774,890	0.92	10,109	25
Iran	7,119	124,603	0.43	15	2.01	1,873,626	2.28	8,071	13
Canada	5,912	79,101	1.05	11	1.51	852,870	2.28	8,925	51
Netherlands	5,715	44,249	1.14	7	2.87	591,684	3.39	6,753	18
Mexico	5,666	54,346	0.48	4	0.92	2,058,001	1.62	9,974	76
China	4,638	84,065	0.69	4	0.05	671,376	0.05	4,664	1
Turkey	4,199	151,615	0.55	18	0.92	986,794	1.19	5,447	30
Sweden	3,743	30,799	1.15	9	3.15	452,883	4.40	5,225	40
India	3,303	106,750	0.41	15	0.06	1,320,004	0.10	5,460	65
Peru	2,914	99,483	0.54	17	1.69	961,178	2.99	5,163	77
Ecuador	2,839	34,151	0.47	3	3.49	929,031	5.41	4,407	55
Russia	2,837	299,941	0.92	86	0.21	564,570	0.39	5,169	82
Switzerland	1,613	30,535	1.13	4	1.65	177,943	2.07	2,015	25
Ireland	1,561	24,251	0.84	12	3.80	229,241	4.68	1,922	23
Portugal	1,247	29,432	1.32	24	0.91	117,894	1.13	1,556	25
Indonesia	1,221	18,496	0.42	7	0.11	425,516	0.16	1,770	45
Romania	1,126	17,191	1.09	12	0.52	152,909	0.78	1,666	48
Pakistan	985	45,898	0.29	14	0.16	577,008	0.27	1,684	71
Poland	948	19,268	1.06	23	0.23	122,476	0.32	1,303	37
Philippines	837	12,942	0.36	7	0.22	313,133	0.29	1,127	35
Japan	771	16,385	1.60	6	0.04	101,387	0.08	1,627	111
Egypt	659	13,484	0.34	10	0.19	283,005	0.29	970	47
Austria	632	16,257	1.15	32	0.61	58,269	0.65	670	6
Colombia	613	16,935	0.56	22	0.22	162,726	0.33	910	49
Algeria	561	7,377	0.43	12	0.31	164,529	0.39	701	25
Denmark	551	11,044	1.14	19	0.83	61,690	1.05	702	27
Ukraine	548	18,876	0.98	23	0.12	99,061	0.22	973	78
Chile	509	49,579	0.74	76	0.37	117,057	0.62	862	69

Hungary	470	3,598	1.10	7	0.43	57,080	0.58	628	34
Dominican Rep.	441	13,223	0.48	25	0.86	120,248	1.13	577	31
Argentina	393	8,796	0.67	20	0.13	83,248	0.19	559	42
Bangladesh	370	25,121	0.37	26	0.06	176,299	0.11	649	76
Saudi Arabia	329	59,854	0.28	74	0.34	174,065	0.52	492	49
South Africa	312	17,200	0.35	20	0.15	152,643	0.26	541	73
Czechia	302	8,647	1.09	22	0.26	33,375	0.31	365	21
Finland	301	6,399	1.25	19	0.43	33,697	0.60	421	40
Panama	281	9,867	0.54	20	1.24	72,218	1.72	390	39
Israel	277	16,650	0.71	4	0.44	68,389	0.76	486	75
South Korea	263	11,110	0.96	14	0.05	29,937	0.06	288	10
Serbia	234	10,733	1.03	36	0.32	30,180	0.43	311	33
Norway	233	8,257	1.01	8	0.43	32,219	0.60	324	39
Emirates	227	25,063	0.19	43	1.24	153,844	1.59	292	29
Moldova	221	6,340	0.72	22	0.86	43,939	1.23	317	44

208 CumDD: Cumulative number of reported Deaths, CumCCD: Cumulative number of
209 Confirmed Cases, IFR: Infection Fatality Rate, %DI: Detection Index on Idt (percentage
210 of total Estimated Infections in a seven day period immediately prior to Idt represented
211 by total CCD in the same period), %RI: present percentage of the country population
212 estimated to be Recovered and Immune, CumEI: present cumulative Estimated number
213 of Infections, %FRI: Future percentage of the country population estimated to be
214 Recovered and Immune in 23 days, CumFD: Future estimated number of cumulative
215 Deaths in 23 days, %I: Increase percentage by which CumEI have increased from Idt to
216 the present, and by which FD and %FRI are estimated to increase in 23 days. Shaded
217 cells represent minimum (blue), maximum (pink) and median (green, ranks 25th and
218 26th) values per column. Additional data and estimates can be found in S6.

219

220

221

222 Results and discussion

223 Estimated IFR values show a bimodal distribution with one mode around 0.5% and the
224 other slightly above 1% (Fig 1). Out of the 50 countries with more reported deaths,
225 estimated IFR values are higher than 1% in all European countries (n=23) with the
226 exception of Russia (0.92%), Ireland (0.84%), Ukraine (0.98%) and Moldova (0.72%),
227 and lower than 1% in all non-European countries (n=27) with the exception of Canada
228 (1.05%) and Japan (1.60%) (Table 1). This is due to the fact that European countries
229 have age structures biased to higher age classes. This is likely one of the reasons why
230 European countries have had high death tolls, and why mortality may be lower in other
231 continents [17, 28], although many other additional reasons have been suggested [29-
232 31].

233 **Fig 1. Distribution of IFR and %DI estimates in the 50 countries with more**
234 **reported deaths during the development of the COVID-19 pandemic up to May 20,**
235 **2020.** Upper panel: Infection Fatality Rate (IFR) seems to be bimodal, with most
236 European countries (darker bars) showing values above 1%, and most of the remaining
237 countries with values below 1%. Lower panel: In most countries the percentage of total
238 Estimated Infections in a seven day period immediately prior to Infection Date
239 represented by total confirmed cases in the same period (%DI on ldt) is under 30%.
240 European countries highlighted as darker bars.

241
242 Our estimates up to ldt (estimated infections, %DI on ldt and percentage of
243 immune population) depend only on the number of reported deaths, age specific IFR,
244 age structure data and population size, so they are as good as these data values are.

245 Assuming age structure and population size data are reliable and that the number of
246 COVID-19 related deaths are as accurate as they should be [2,3,11], age specific IFR
247 values remain a key element of our estimations. Verity et al [12] have, in our opinion,
248 made every possible effort to correct for sampling bias in the Crude Case Fatality Rate
249 from Wuhan data [15] in order to obtain true IFR values for each 10-year age class;
250 therefore we have used such values to estimate global IFR for each country. However,
251 IFR may also depend on country specific factors such as healthcare system, socio-
252 economic structure and/or proportion and types of comorbidities [29,30].

253 This paper will not address possible reasons why different countries have shown
254 different trajectories in terms of CCD and reported deaths other than differences in IFR;
255 instead we attempt to identify other useful estimates and patterns common to several
256 countries, and their implications. The results discussed in this manuscript will have
257 changed somewhat within days as CCD and reported deaths data are updated every
258 day, but the patterns are likely to remain, as we have observed throughout the previous
259 weeks working on this manuscript. However, Table 1, S6 File and all figures may be
260 updated every day with the functions in the provided R script. We report estimates on
261 absolute numbers of past and present infections, and future deaths, as they may be
262 useful for individual countries. However, we focus on discussing relative values derived
263 from them (IFR, %DI, present and future estimates of immune population and its
264 predicted percentage increase) as they can be compared across countries regardless of
265 their size.

266 Our results on %DI on I_{dt} show great variation among countries, and suggest
267 that CCD represent less than a third of estimated infections on I_{dt} in all but 5 countries,

268 Russia (86%), Chile (76%), Saudi Arabia (74%) United Arab Emirates (43%) and Serbia
269 (36%) (Fig 1 and Table 1). Very high values of %DI (either daily values or on ldt), even
270 above 100%, may be obtained occasionally for reasons other than high testing effort. If
271 not all deaths are detected or reported [10], our estimates based on reported deaths
272 and IFR may underestimate the number of infections, thus overestimating %DI. Another
273 possibility is that one or more age specific IFR values are lower in certain countries from
274 those suggested by Verity et al. [12]. Since IP and ODP are average values with
275 important variation [12,13], the number of reported deaths on a given day must certainly
276 include infections on other dates around ldt. Nevertheless, we recommend that original
277 data should be verified, and age specific IFR values be evaluated, in countries with %DI
278 values consistently far outside the distribution of the rest of the countries (Fig 1). Other
279 potential outliers in the estimates may be due to occasional corrections in the ECDC
280 database, such as a change of methodology taken by Ecuador's healthcare system on
281 May 8 [32], which resulted in negative CCD values.

282 In spite of variation in daily %DI values, a clear pattern of decrease throughout
283 the pandemic may be observed among most of the 50 countries (orange points in Figs
284 2-4 and S7), suggesting that testing effort is not, or cannot be, maintained by most
285 countries once the curve has taken off. A few countries show long-term fluctuations in
286 daily %DI values such as Japan (Fig 5), having reached daily %DI values near 100% in
287 early April, but with a %DI on ldt of 6%. Although correction factors have been used to
288 estimate actual number of infections from CCD [33], the patterns of short and long term
289 fluctuation observed suggest that CCD do not provide a consistent estimate of the
290 actual number of infections at any point in time.

291

292 **Fig 2. Data and estimates during the development of the COVID-19 pandemic in**

293 **Belgium up to May 20, 2020.** Upper panel: Cumulative number of reported deaths

294 (black line) and confirmed cases (blue line) up to the present, according to the

295 European Centre for Disease Prevention and Control. Estimated infections up to

296 Infection Date (Idt, April 28, dark red line). Estimated infections from Idt up to the

297 present (light red line), assuming a constant Detection Index after Idt. Estimated

298 cumulative number of deaths up to June 12 (grey line), assuming a constant Detection

299 Index after Idt. Lower panel: Daily Detection Index (orange points) expressing the daily

300 percentage of estimated infections represented by the daily number of Confirmed

301 Cases, and its estimated value during the period of seven days prior to Idt (orange

302 horizontal line). Percentage of the country population estimated to have recovered and

303 be immune up to the present (dark green line), and up to June 12 assuming a constant

304 Detection Index after Idt (light green line). Values in the corresponding colors represent

305 totals up to either Idt (on Y axis in upper panel) or up to the ending date of each line.

306 Dotted convergent lines show slopes for theoretical two-fold increases in 1, 2, 3, 5, 10

307 and 60 days. Vertical grey broken lines represent Idt (April 28), present (May 20) and IP

308 (Incubation Period) + ODP (Onset to Death Period) days into the future (June 12).

309 Belgium has experienced high relative mortality, a low detection index, and the highest

310 value of estimated percentage of recovered and immune population. After a very steep

311 beginning, the rate of increase of all estimates is now very low. These parameters are

312 expected from countries in which, after the disease has become widespread, the rate of

313 infections has decreased substantially.

314

315 **Fig 3. Data and estimates during the development of the COVID-19 pandemic in**
316 **the United States up to May 20, 2020.** For abbreviation meanings and code color
317 explaining each line see legend in Fig 2. The United States has the highest COVID-19
318 death toll of the world, a still clear ascending pattern, moderate detection index and also
319 a still moderate estimated percentage of immune population.

320

321 **Fig 4. Data and estimates during the development of the COVID-19 pandemic in**
322 **Brazil up to May 20, 2020.** For abbreviation meanings and code color explaining each
323 line see legend in Fig 2. With an already high death toll and a low Detection Index,
324 estimates for Brazil are still increasing at relatively high rates. These parameters are
325 expected from countries still facing a steep increase in infections, death toll and
326 population immunity.

327

328 **Fig 5. Data and estimates during the development of the COVID-19 pandemic in**
329 **Japan up to May 20, 2020.** For abbreviation meanings and code color explaining each
330 line see legend in Fig 2. With the lowest percentage of immune population, Japan has
331 experienced long term fluctuation in daily %DI values throughout the pandemic but its
332 %DI value on ldt is low. The flat curves for data and estimates throughout most of the
333 pandemic and the low value of estimated percentage of immune population are
334 expected from countries that have kept the spread under control from the beginning.

335

336 CCD are derived from SARS-CoV-2 PCR specific tests [3,34,35] performed
337 seeking several goals. Probably the main goal is, or should be, to identify currently
338 infected people (i.e. carrying the virus either with symptoms or not) in order to track and
339 contain other infections [3,35]. As these results accumulate, and given that some
340 countries carry out tests in a more or less standardized fashion, it is tempting to report
341 them (as many countries do) as a measure of the spread of the SARS-CoV-2 virus
342 either directly, or as the relative number of positive outcomes. However, there are
343 several reasons why this is not appropriate. They are rarely applied to a random sample
344 of the population, but rather aimed at suspicious individuals (travelers or recent contacts
345 with other infections) or at symptomatic individuals [6,12,27]. These tests will have a
346 negative outcome if the virus was present, but is not anymore [6,9]. To solve these
347 issues, there are current efforts to develop and apply lateral flow immunoassays to
348 measure the seroprevalence of antibodies to SARS-CoV-2 to random samples of the
349 population, such as the work carried out by Bendavid et al [6]. This study suggests a 50-
350 85 fold increase in the number of infections compared to CCD, but see Vogel [4].
351 Comparing our estimates with antibody surveys once they are commonly implemented
352 should provide the ability to calibrate them, adjusting country and/or age specific IFR
353 values. A recent antibody survey in Spain [36] reported an immunity percentage of
354 people tested between April 27 and May 11 of 5% (95% IC: 4.7-5.4%), in close
355 agreement with our current estimate of 4.86% for this country (Table 1).

356 A strong investment by a given country in PCR-based analyses may be seen as
357 the country's commitment to identify and contain lines of infection, and thus control the
358 spread of the virus. A byproduct of a high testing effort would be a high %DI value.

359 However, a high %DI value may be hard to reach or maintain for any country once the
360 virus has spread in large numbers. Most (17) of the top 25 countries in Table 1, those
361 with the highest death tolls and thus the highest estimated number of infections, have
362 %DI values on Idt under the median (14%), while most (18) of the remaining countries,
363 those with much lower values of accumulated deaths and thus lower estimated number
364 of infections, have values on Idt above the median.

365 The six countries with estimated current percentages of population recovered
366 and immune above 3% and IFR above 1% (United Kingdom, Italy, France, Spain,
367 Belgium Fig 2 and Sweden), are those well known for their initially steep slope of
368 increase in CCD and in number of reported deaths, and the resulting high death toll.
369 The United States (Fig 3) and South Korea, having both a global IFR of 0.96, have
370 clearly contrasting estimated percentages of immune population (2.91 vs 0.05%). This
371 suggests that percentages of immune population in countries where the lines of
372 infection could not be controlled will grow more rapidly and may reach up to 8.2% in the
373 next 23 days (Belgium, Fig 2 and Table 1). Our results suggest that other countries are
374 still experiencing a steeper increase in number of infections (see Increase percentage
375 column in Table 1). A group of five countries (Brazil Fig 4, México, India, Peru and
376 Russia) with IFR values below 1% and an already high death toll (above 1,000) may
377 experience a high number of casualties if, as our estimates suggest, they experience
378 68-82% more deaths in the next 23 days. They would also experience an equivalent
379 increase in population immunity.

380 It has been suggested that the accumulation of herd immunity in the population
381 slows epidemic resurgence [37]. By contrast, when virtually no population immunity is

382 built, such as the case of China, India, Japan, Bangladesh or South Korea (percentage
383 of immune population below 0.1%, in Table 1) a resurgence peak of COVID-19 may be
384 nearly the same size as an uncontrolled epidemic if control policies fail [37]. The
385 numbers for Japan (Fig 5), for instance, suggest a high vulnerability since it shows the
386 highest estimated IFR (1.60) of all countries, a low %DI on I_{dt} (6 %), the lowest
387 percentage of immune population (0.04%), and the highest estimated increase (111%)
388 in infections from I_{dt} to the present, and thus a similar increase in deaths in the
389 following 23 days. We still don't know how long immunity to SARS-CoV-2 could last [4],
390 but recent modeling suggests anywhere between 40 weeks and 5 years [37].
391 Nevertheless, immunity is unlikely to end abruptly, so the rate of any further re-infection
392 with new strains should be smoother in the future as long as *herd immunity* has had
393 some build-up [4,16]. However, even Belgium with the highest estimated percentage of
394 immune population (6.94%) seems far from values approaching herd immunity.

395 Although CCD have been used to estimate the number of infections [38], we
396 believe that this will usually provide poor estimates as suggested by the short and long-
397 term variation in daily %DI values. In any case, we suggest that having a low %DI value
398 means that a large proportion of infections is not being tracked. Other values that are
399 calculated based on CCD are likely just as misleading, such as Case Fatality Rate
400 [2,3,6] and Recovered Cases. A key factor for the gap between CCD and the real
401 number of infections are asymptomatic infections (which technically do not suffer
402 COVID-19 so they are not “cases”, but asymptomatic active vectors of SARS-CoV-2)
403 [7,8]. In the absence of widespread and well-designed application of lateral flow
404 immunoassays to random samples of the population to measure the seroprevalence of

405 antibodies, we suggest that estimates based on reported deaths and IFR are a more
406 reliable alternative to estimate the spread of SARS-CoV-2 than CCD in any country for
407 which age structure data is available and data of reported deaths is trustworthy. They
408 also illustrate the potential bias when assuming that CCD data reflect the actual spread
409 of COVID-19.

410

411

412 **Acknowledgements**

413 We are grateful to Isabel Noriega, Yareni Perroni, Matt Draud and Warren Greiff for
414 proofreading and useful comments on early versions of the manuscript.

415

416 **References**

- 417 1. Morais AF. Logistic approximations used to describe new outbreaks in the 2020
418 COVID-19 pandemic. [arXiv:2003.11149](https://arxiv.org/abs/2003.11149) [Preprint]. 2020 [cited 2020 Apr 15].
419 Available from: <https://arxiv.org/ftp/arxiv/papers/2003/2003.11149.pdf>
- 420 2. De Natale G, Ricciardi V, De Luca G, De Natale D, Di Meglio G, Ferragamo A, et
421 al. The COVID-19 infection in Italy: a statistical study of an abnormally severe
422 disease. medRxiv [Preprint]. 2020 medRxiv 20046243 [posted 2020 Mar 28;
423 cited 2020 Apr 15]: [24 p.]. Available from:
424 <https://www.medrxiv.org/content/10.1101/2020.03.28.20046243v2.full.pdf> doi:
425 10.1101/2020.03.28.20046243
- 426 3. Rubino S, Kelvin N, Bermejo-Martin JF, Kelvin DJ. As COVID-19 cases, deaths
427 and fatality rates surge in Italy, underlying causes require investigation. *J Infect*
428 *Dev Ctries*. 2020 Mar 3; 14(3):265-267. doi:10.3855/jidc.12734. Available from:
429 <https://www.jidc.org/index.php/journal/article/view/32235086/2217>
- 430 4. Vogel G. First antibody surveys draw fire for quality, bias. *Science*.
431 2020;368(6489): 350-351. doi:10.1126/science.368.6489.350. Available from:
432 <https://science.sciencemag.org/content/368/6489/350>

- 433 5. Buonanno P, Galletta S, Puca M. Estimating the Severity of COVID-19: Evidence
434 From the Italian Epicenter. [Preprint]. 2020 Apr 2 [cited 2020 Apr 20]. doi:
435 10.2139/ssrn.3567093. Available at SSRN: <https://ssrn.com/abstract=3567093>
436 6. Bendavid E, Mulaney B, Sood N, Shah S, Ling E, Bromley-Dulfano R, et al.
437 COVID-19 Antibody Seroprevalence in Santa Clara County, California. medRxiv
438 [Preprint]. 2020 medRxiv 20062463 [posted 2020 Apr 14; cited 2020 Apr 21]: [17
439 p.]. doi: 10.1101/2020.04.14.20062463. Available from:
440 <https://www.medrxiv.org/content/10.1101/2020.04.14.20062463v1>
441 7. Ye F, Xu S, Rong Z, Xu R, Liu X, Deng P, et al. Delivery of infection from
442 asymptomatic carriers of COVID-19 in a familial cluster. IJID. Forthcoming 2020.
443 doi: 10.1016/j.ijid.2020.03.042. Available from:
444 <https://www.ijidonline.com/action/showPdf?pii=S1201-9712%2820%2930174-0>
445 8. Mizumoto K, Kagaya K, Zarebski A, Chowell G. Estimating the asymptomatic
446 proportion of coronavirus disease 2019 (COVID-19) cases on board the Diamond
447 Princess cruise ship, Yokohama, Japan, 2020. Euro Surveill.
448 2020;25(10):pii=2000180. doi:10.2807/1560-7917. Available from:
449 <https://www.eurosurveillance.org/docserver/fulltext/eurosurveillance/25/10/eurosurv-25-10-1.pdf?expires=1587518791&id=id&accname=quest&checksum=4137BA91E8731FC7F18D151CA01A0DAC>
450 9. Carbone M, Green JB, Bucci EM, Lednicky JA. Coronaviruses: Facts, Myths, and
451 Hypotheses. J Thorac Oncol. Forthcoming 2020 [posted 2020 Mar 7; cited 2020
452 Apr 21]. doi: 10.1016/j.jtho.2020.02.024. Available from:
453 [https://www.jto.org/article/S1556-0864\(20\)30190-8/pdf](https://www.jto.org/article/S1556-0864(20)30190-8/pdf)
454 10. Page J. Fan W. Wuhan's Coronavirus Death Toll Surges by 50% After China
455 Revision. The Wall Street Journal. 2020 Apr 17 [Cited 2020 Apr 20]. Available
456 from: <https://www.wsj.com/articles/wuhans-coronavirus-death-toll-surges-by-50-after-china-reviews-data-11587110435>
457 11. Burn-Murdoch J, Romei V, Giles C. Global coronavirus death toll could be 60%
458 higher than reported. Financial Times. 2020 Apr 26 [Cited 2020 Apr 29].
459 Available from: https://www.ft.com/content/6bd88b7d-3386-4543-b2e9-0d5c6fac846c?utm_source=Nature+Briefing&utm_campaign=527dbb4637-briefing-dy-20200428&utm_medium=email&utm_term=0_c9dfd39373-527dbb4637-43334909
460 12. Verity R, Okel LCI, Dorigatti I, Winskill P, Whittaker C, Imai N, et al. Estimates of
461 the severity of COVID-19 disease. Lancet Infect Dis. 2020 Mar 30. [cited 2020
462 Apr 6]. doi: 10.1016/S1473-3099(20)30243-7. Available from:
463 <https://www.thelancet.com/action/showPdf?pii=S1473-3099%2820%2930243-7>
464 13. Li Q, Guan X, Wu P, Wang X, Zhou L, Tong Y, et al. Early Transmission
465 Dynamics in Wuhan, China, of Novel Coronavirus-Infected Pneumonia. N Engl J
466
467
468
469
470
471
472

- 473 Med. 2020 Jan 29;382:1199-207. doi: 10.1056/NEJMoa2001316. Available from:
474 <https://www.nejm.org/doi/pdf/10.1056/NEJMoa2001316?articleTools=true>
- 475 14. Backer JA, Klinkenberg D, Wallinga J. Incubation period of 2019 novel
476 coronavirus (2019-nCoV) infections among travellers from Wuhan, China, 20–28
477 January 2020. Euro Surveill. 2020;25(5):pii=2000062. doi: [10.2807/1560-](https://doi.org/10.2807/1560-7917.ES.2020.25.5.2000062)
478 [7917.ES.2020.25.5.2000062](https://doi.org/10.2807/1560-7917.ES.2020.25.5.2000062). Available from:
479 [https://www.eurosurveillance.org/docserver/fulltext/eurosurveillance/25/5/eurosur](https://www.eurosurveillance.org/docserver/fulltext/eurosurveillance/25/5/eurosurv-25-5-3.pdf?expires=1586532321&id=id&accname=guest&checksum=F8933F0A7DA4F98D9BA22FFBE3631C80)
480 [v-25-5-](https://www.eurosurveillance.org/docserver/fulltext/eurosurveillance/25/5/eurosurv-25-5-3.pdf?expires=1586532321&id=id&accname=guest&checksum=F8933F0A7DA4F98D9BA22FFBE3631C80)
481 [3.pdf?expires=1586532321&id=id&accname=guest&checksum=F8933F0A7DA4](https://www.eurosurveillance.org/docserver/fulltext/eurosurveillance/25/5/eurosurv-25-5-3.pdf?expires=1586532321&id=id&accname=guest&checksum=F8933F0A7DA4F98D9BA22FFBE3631C80)
482 [F98D9BA22FFBE3631C80](https://www.eurosurveillance.org/docserver/fulltext/eurosurveillance/25/5/eurosurv-25-5-3.pdf?expires=1586532321&id=id&accname=guest&checksum=F8933F0A7DA4F98D9BA22FFBE3631C80)
- 483 15. Team TNCPERE. The epidemiological characteristics of an outbreak of 2019
484 novel coronavirus diseases (COVID-19) in China. Chin J Epidemiol. 2020; 41:
485 145–151. doi: 103760/cmajjssn0254-6450202002003. Available from:
486 <http://rs.yiigle.com/yufabiao/1181998.htm>
- 487 16. Ferguson NM, Laydon D, Nedjati-Gilani G, Imai N, Ainslie K, Baguelin M, et al.
488 Impact of non-pharmaceutical interventions (NPIs) to reduce COVID-19 mortality
489 and healthcare demand. Imperial College London; 2020 March. Report No.: 9.
490 doi: 10.25561/77482. Available from: [https://www.imperial-](https://www.imperial.ac.uk/media/imperial-college/medicine/mrc-gida/2020-03-16-COVID19-Report-9.pdf)
491 [college/medicine/mrc-gida/2020-03-16-COVID19-Report-9.pdf](https://www.imperial.ac.uk/media/imperial-college/medicine/mrc-gida/2020-03-16-COVID19-Report-9.pdf)
- 492 17. Dowd JB, Andriano L, Brazel DM, Rotondi V, Block P, Ding X, et al.
493 Demographic science aids in understanding the spread and fatality rates of
494 COVID-19. PNAS. 2020 May 5;117(18)9696-9698. doi:
495 10.1073/pnas.2004911117. Available from:
496 <https://www.pnas.org/content/pnas/117/18/9696.full.pdf>
- 497 18. R Core Team. *R. A Language and Environment for Statistical Computing*.
498 Vienna: R Foundation for Statistical Computing [internet]. 2020 [cited 2020 Apr
499 13]. Available from: <https://r-project.org>
- 500 19. United Nations, Department of Economic and Social Affairs, Population Division.
501 World Population Prospects 2019, Online Edition. Rev. 1; 2019 [cited 2020 Apr
502 13]. Database: World Population Prospects 2019 [Internet]. Available from:
503 <https://population.un.org/wpp/Download/Standard/Population/>
- 504 20. Barton CM, Alberti M, Ames D, Atkinson J, Bales J, Burke E, et al. Call for
505 transparency of COVID-19 models. Science. 2020;368(6490): 482-483. doi:
506 10.1126/science.abb8637. Available from:
507 <https://science.sciencemag.org/content/368/6490/482.2>
- 508 21. ECDC. Download today's data on the geographic distribution of COVID-19 cases
509 worldwide. 2020 [cited 6 Apr 2020]. In: European Centre for Disease Prevention
510 and Control. An Agency of the European Union [Internet]. Available from:
511 [https://www.ecdc.europa.eu/en/publications-data/download-todays-data-](https://www.ecdc.europa.eu/en/publications-data/download-todays-data-geographic-distribution-covid-19-cases-worldwide)
512 [geographic-distribution-covid-19-cases-worldwide](https://www.ecdc.europa.eu/en/publications-data/download-todays-data-geographic-distribution-covid-19-cases-worldwide)

- 513 22. ECDC. How ECDC collects and processes COVID-19 data. 2020 Apr 1 [cited
514 2020 Apr 15]. In: European Centre for Disease Prevention and Control An
515 agency of the European Union [Internet]. Available from:
516 <https://www.ecdc.europa.eu/en/covid-19/data-collection>
- 517 23. The Johns Hopkins Center for Health Security. 2019 Novel Coronavirus COVID-
518 19 (2019-nCoV) Data Repository by Johns Hopkins CSSE. 2020. Available from:
519 <https://github.com/CSSEGISandData/COVID-19> [accessed on 13/04/2020]
- 520 24. World Health Organization. Coronavirus disease (COVID-19) Pandemic. 2020.
521 Available from: <https://covid19.who.int/> [accessed on 13/04/2020]
- 522 25. Ritchie H, Ortiz-Ospina E, Roser M, Hasell J. COVID-19 deaths and cases: how
523 do sources compare? 2020 Mar 19 [cited 2020 May 8]. In: Our World in Data.
524 Available from: <https://ourworldindata.org/covid-sources-comparison>
- 525 26. Lauer SA, Grantz KH, Bi Q, Jones FK, Zheng Q, Meredith HR, et al. The
526 Incubation Period of Coronavirus Disease 2019 (COVID-19) From Publicly
527 Reported Confirmed Cases: Estimation and Application. *Ann Intern Med*. 2020
528 Mar 10. doi:10.7326/M20-0504. Available from:
529 [https://annals.org/aim/fullarticle/2762808/incubation-period-coronavirus-disease-
530 2019-covid-19-from-publicly-reported](https://annals.org/aim/fullarticle/2762808/incubation-period-coronavirus-disease-2019-covid-19-from-publicly-reported)
- 531 27. Xu B, Gutierrez B, Mekaru S, Sewalk K, Goodwin L, Loskill A, et al.
532 Epidemiological data from the COVID-19 outbreak, real-time case information.
533 *Sci Data*. 2020 Mar 24;7(106). doi:10.6084/m9.figshare.11974344. Available
534 from: <https://www.nature.com/articles/s41597-020-0448-0.pdf>
- 535 28. The Editorial Board. The Global Coronavirus Crisis Is Poised to Get Much, Much
536 Worse. *The New York Times*. 2020 Apr 13 [Cited 2020 Apr 17]. Available from:
537 <https://www.nytimes.com/2020/04/13/opinion/coronavirus-cases.html>
- 538 29. Paterlini M. 'Closing borders is ridiculous': the epidemiologist behind Sweden's
539 controversial coronavirus strategy. 2020 Apr 21 [Internet]. *Nature Q&A* [cited
540 2020 Apr 22]. doi: 10.1038/d41586-020-01098-x. Available from:
541 [https://www.nature.com/articles/d41586-020-01098-
x?utm_source=Nature+Briefing&utm_campaign=4525e04069-briefing-dy-
20200421&utm_medium=email&utm_term=0_c9dfd39373-4525e04069-
43334909](https://www.nature.com/articles/d41586-020-01098-
542 x?utm_source=Nature+Briefing&utm_campaign=4525e04069-briefing-dy-
543 20200421&utm_medium=email&utm_term=0_c9dfd39373-4525e04069-
544 43334909)
- 545 30. Wynants L, Van Calster B, Bonten MMJ, Collins GS, Debray TPA, De Vos M, et
546 al. Prediction models for diagnosis and prognosis of covid-19 infection:
547 systematic review and critical appraisal. *BMJ* 2020;369:m1328.
548 doi:10.1136/bmj.m1328. Available from:
549 <https://www.bmj.com/content/bmj/369/bmj.m1328.full.pdf>
- 550 31. Palaniappan A, Dave U, Gosine B. Comparing South Korea and Italy's
551 healthcare systems and initiatives to combat COVID-19. *Rev Panam Salud
552 Publica*. 2020;44:e53. doi: 10.26633/RPSP.2020.53. Available from:

- 553 [https://iris.paho.org/bitstream/handle/10665.2/52011/v44e532020.pdf?sequence](https://iris.paho.org/bitstream/handle/10665.2/52011/v44e532020.pdf?sequence=5&isAllowed=y)
554 [=5&isAllowed=y](https://iris.paho.org/bitstream/handle/10665.2/52011/v44e532020.pdf?sequence=5&isAllowed=y)
- 555 32. Ministerio de Salud Pública de la República de Ecuador. Variación en casos por
556 reclasificación – Covid19. 2020 May 8 [cited 2020 May 16]. Available from:
557 <https://www.salud.gob.ec/variacion-en-casos-por-reclasificacion/>
- 558 33. Lachmann A, Jagodnik KM, Giorgi FM, Ray F. Correcting under-reported COVID-
559 19 case numbers: estimating the true scale of the pandemic. medRxiv [Preprint].
560 2020 medRxiv 20036178 [posted 2020 Apr 5; cited 2020 May 16]: [6 p.]. doi:
561 10.1101/2020.03.14.20036178. Available from:
562 <https://www.medrxiv.org/content/10.1101/2020.03.14.20036178v2.full.pdf>
- 563 34. Wölfel R., Corman VM, Guggemos W, Seilmaier M, Zange S, Müller MA, et al.
564 Virological assessment of hospitalized patients with COVID-2019. Nature.
565 Forthcoming 2020. doi: 10.1038/s41586-020-2196-x. Available from:
566 https://www.nature.com/articles/s41586-020-2196-x_reference.pdf
- 567 35. Corman VM, Landt O, Kaiser M, Molenkamp R, Meijer, A, Chu DKW, et al.
568 Detection of 2019 novel coronavirus (2019-nCoV) by real-time RT-PCR. Euro
569 Surveill. 2020;25(3):pii=2000045. doi: 10.2807/1560-
570 7917.ES.2020.25.3.2000045. Available from:
571 <https://www.eurosurveillance.org/docserver/fulltext/eurosurveillance/25/3/eurosurv-25-3-5.pdf?expires=1587586430&id=id&accname=guest&checksum=E2305D2873B3B8850BA6AAF63C302EC0>
- 572
573
574
- 575 36. Instituto de Salud Carlos III. Estudio Ene-Covid19: Primera Ronda Estudio
576 Nacional de Sero-Epidemiología de la Infección por SARS-CoV-2 en España
577 Informe Preliminar; 2020 May 13. Available from:
578 https://www.ciencia.gob.es/stfls/MICINN/Ministerio/FICHEROS/ENECOVID_Informe_preliminar_cierre_primera_ronda_13Mayo2020.pdf
- 579
580 37. Kissler SM, Tedijanto C, Goldstein E, Grad YH, Lipsitch M. Projecting the
581 transmission dynamics of SARS-CoV-2 through the postpandemic period.
582 Science. 2020 Apr 14. [cited 2020 Apr 17]. doi: 10.1126/science.abb5793.
583 Available from:
584 <https://science.sciencemag.org/content/early/2020/04/14/science.abb5793>
- 585 38. Du Z, Xu X, Wu Y, Wang L, Cowling BJ, Ancel Meyers L. Serial interval of
586 COVID-19 among publicly reported confirmed cases. Emerg Infect Dis. 2020 Jun
587 [cited 2020 Apr 29]. doi: <https://doi.org/10.3201/eid2606.200357>. Available from:
588 https://wwwnc.cdc.gov/eid/article/26/6/20-0357_article
- 589
590

592 **Supporting information**

593 **S1 File. Fully explained R Script (.R)**

594 **S2 File. COVID-19 geographic distribution worldwide on May 20, 2020.** Dataset

595 downloaded from the ECDC website. (.XLSX)

596 **S3 File. IFR by age from three sources (.DOCX)**

597 **S4 File. Age structure of 178 countries.** The estimated 2020 country age structure by

598 the UN Population Division, curated to match the geold code used by the ECDC

599 database. (.TXT)

600 **S5 File. Geold codes.** For reference, geold codes and full country names, obtained

601 from the ECDC website. (.CSV)

602 **S6 File. Extended results table of data and estimates during the development of**

603 **the COVID-19 pandemic up to May 20, 2020, for the 50 countries with more**

604 **reported deaths.** This spreadsheet is generated by the function `cv19.tab.num()` in the

605 R script (S1) and includes 10 additional columns apart from those shown in Table 1: (1)

606 the cumulative number of Confirmed Cases on Infection date (CCD-Idt), (2) the

607 Estimated number Infections on Infection date (EI-Idt), (3) EI assuming a two-fold %DI

608 increase (EI %DIx2), and (4) assuming a %DI decrease of 50% (EI %DI/2), (5-6) future

609 recovered and immune infections (%FRI %DIx2; %FRI %DI/2) and (7-8) future

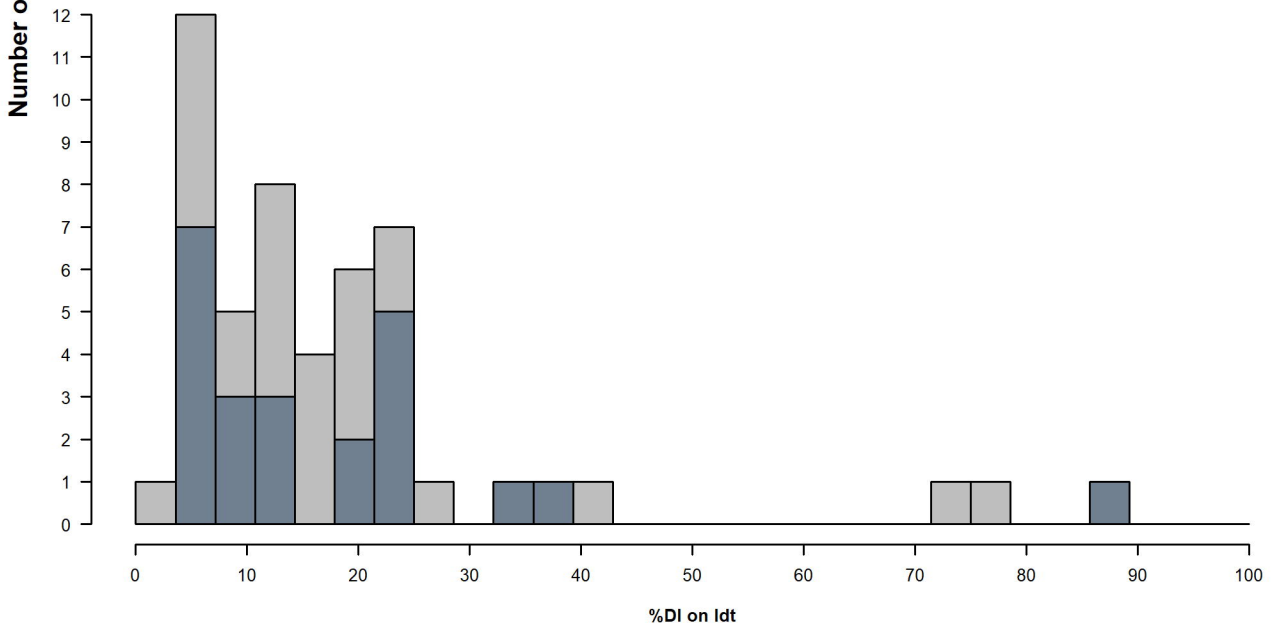
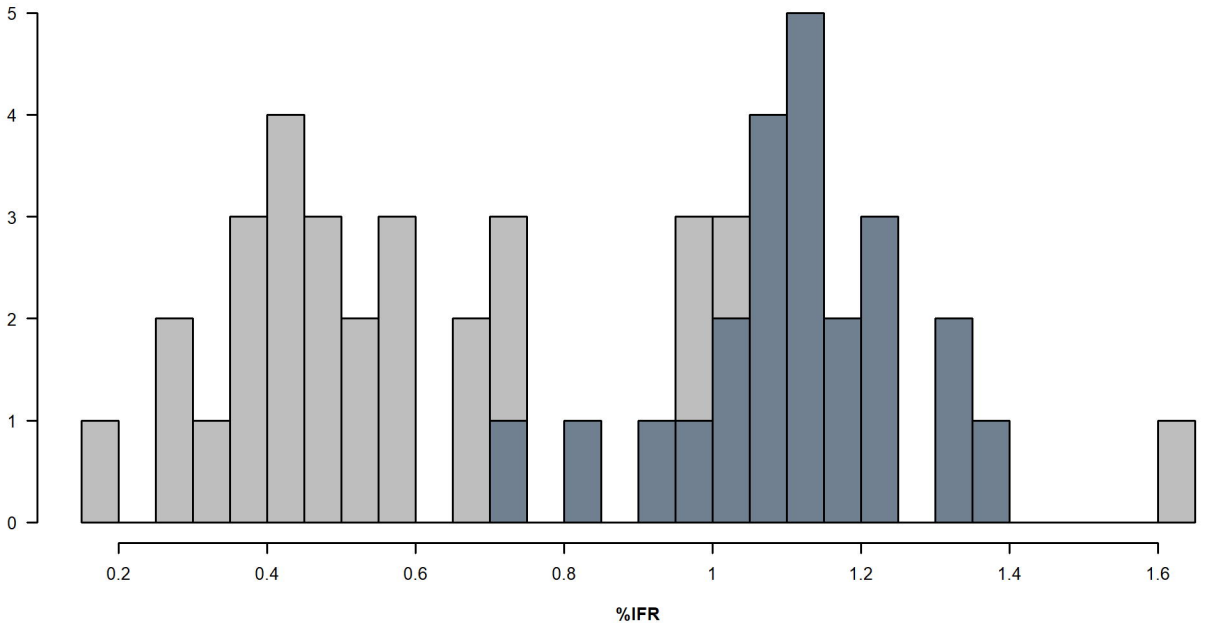
610 cumulative number of deaths (FD %DIx2; FD %DI/2) under the same two scenarios of

611 %DI increase and decrease, and (9-10) days since 5 deaths (d5d) and since 100 deaths

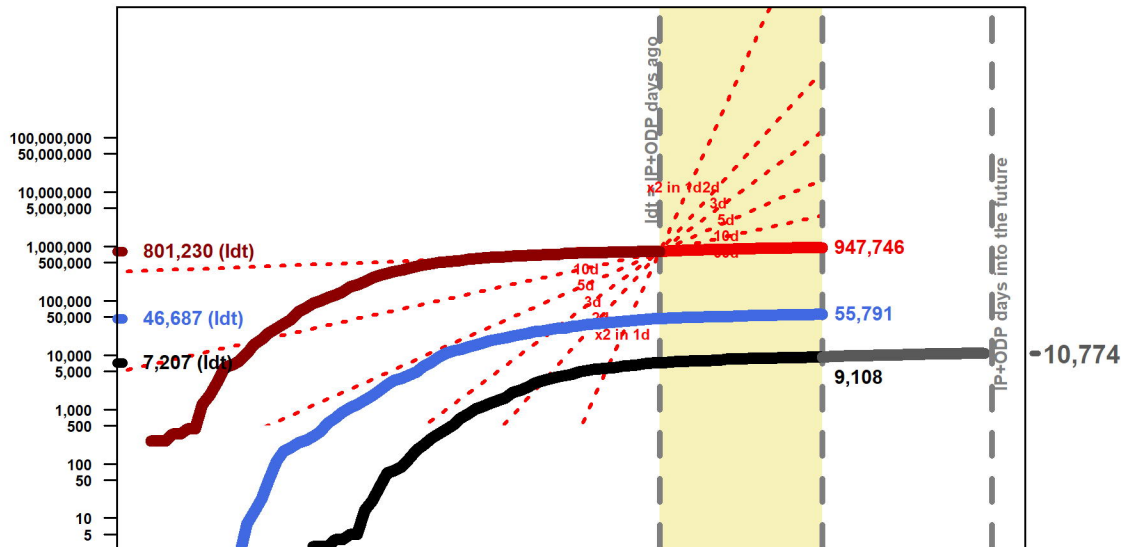
612 (d100d) were reported for each country (.CSV). Relevant parameters used by the

613 functions are shown at the bottom of the table.

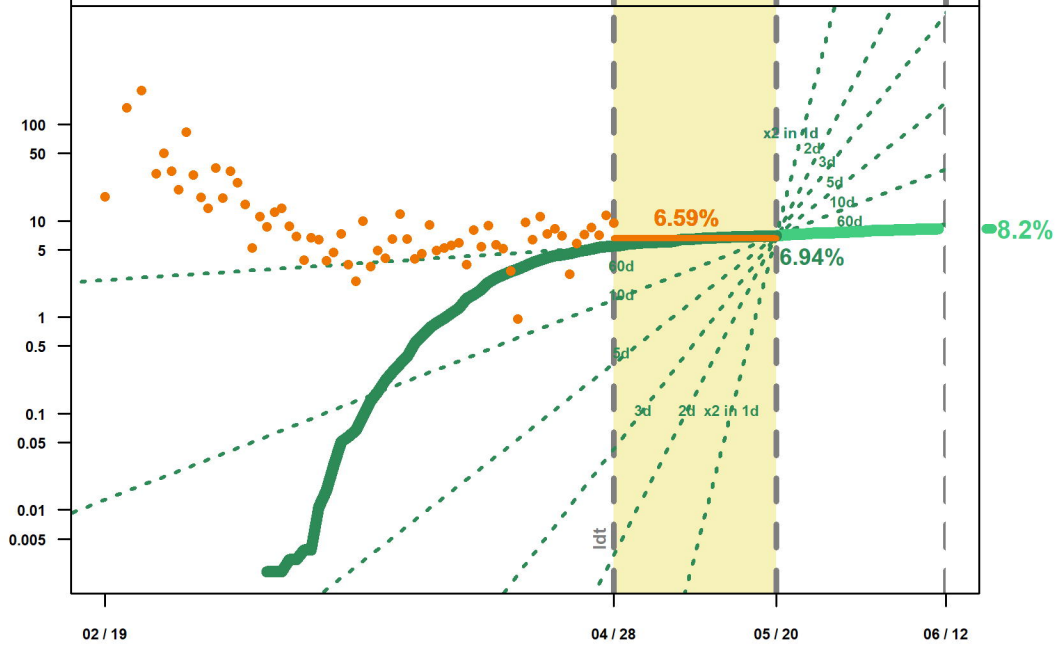
614 **S7 File. Graphs of data and estimates during the development of the COVID-19**
615 **pandemic up to May 20, 2020, for the 50 countries with more reported deaths.** This
616 PDF file is generated by the function `cv19.plot.num()` in the R script (S1). A list of
617 countries included, their geold codes and relevant parameters used are shown in the
618 first page.



Cumulative number



%



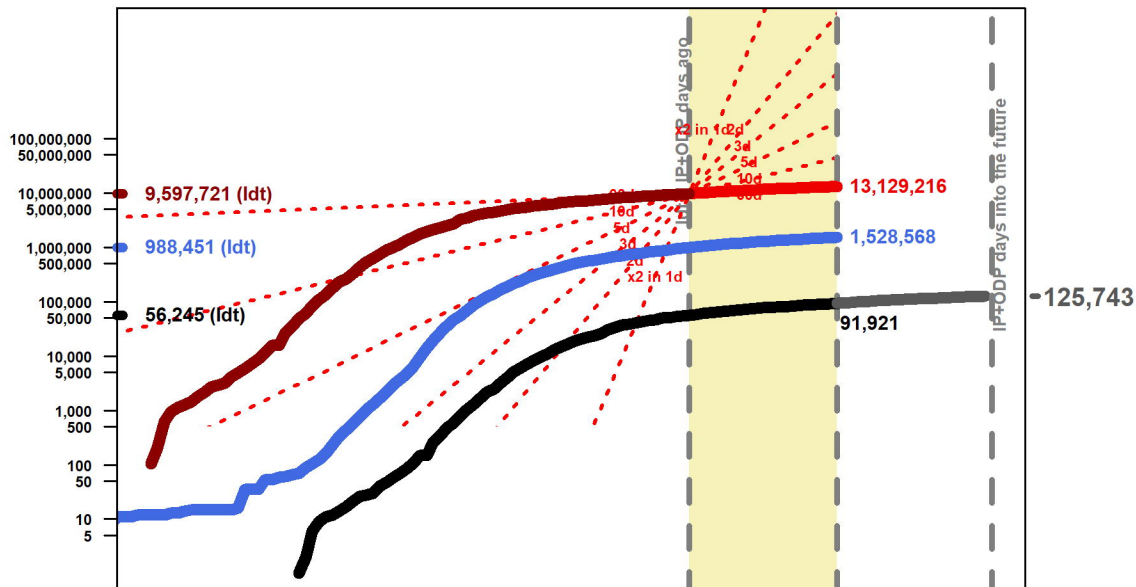
02 / 19

04 / 28

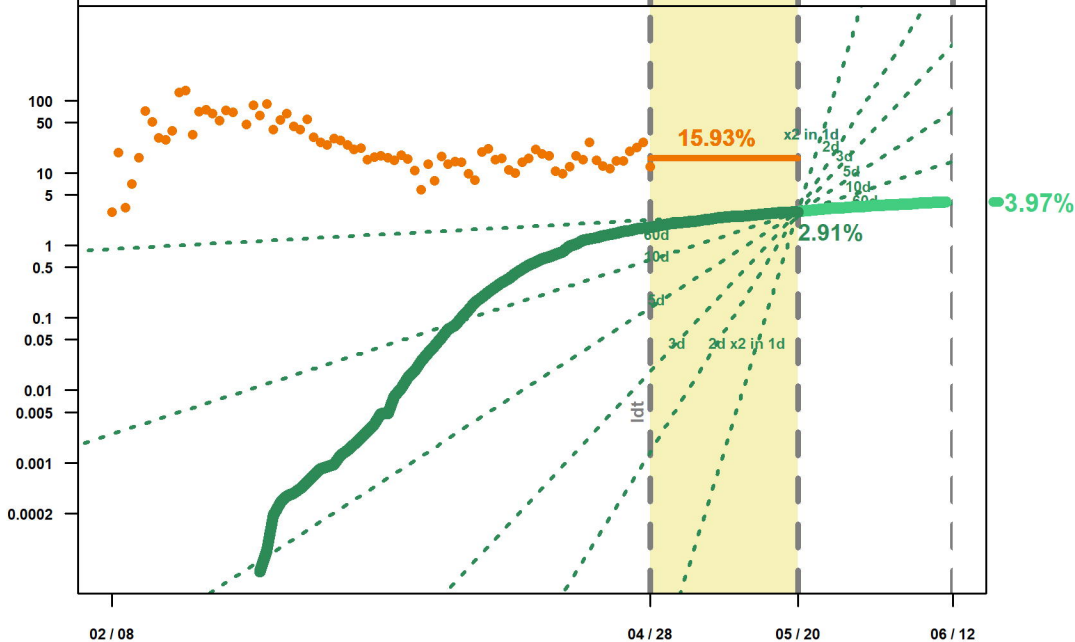
05 / 20

06 / 12

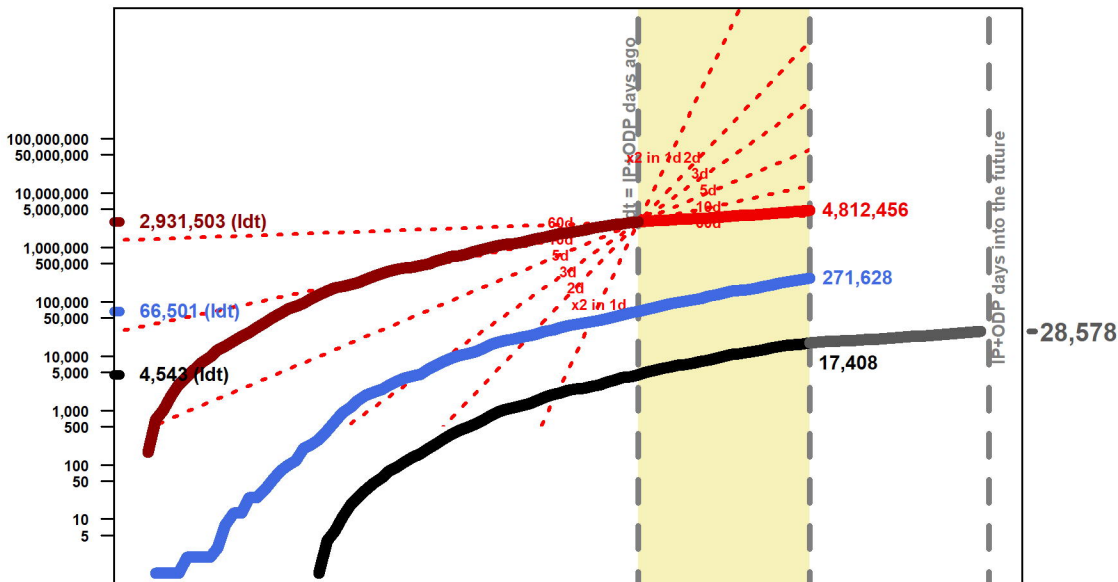
Cumulative number



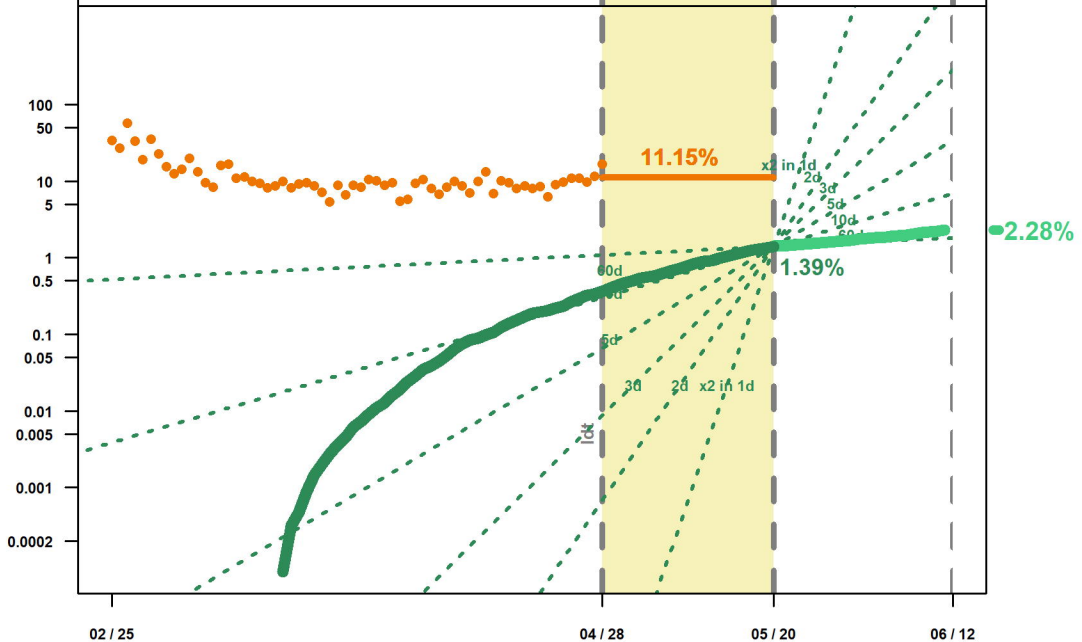
%



Cumulative number



%



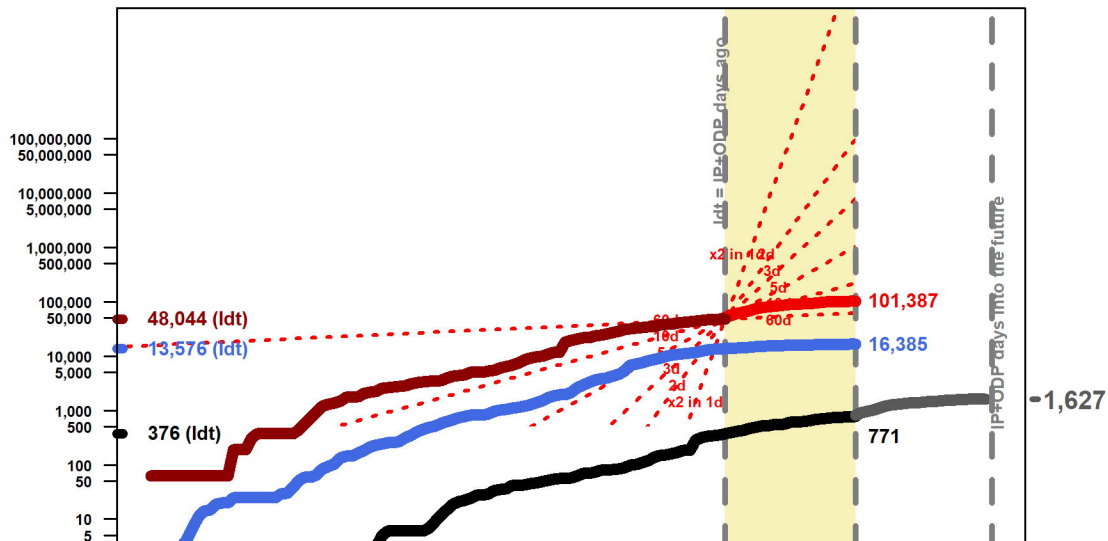
02 / 25

04 / 28

05 / 20

06 / 12

Cumulative number



%

