

23 **Abstract**

24 **Background:** Growing evidence suggests that long-term exposure to air pollutants is associated
25 with cardiovascular morbidity, including lipometabolic disturbance.

26 **Objectives:** To explore the chronic effects of air pollutants on lipometabolic disturbance via
27 detectable lipoprotein parameters.

28 **Methods:** Seven online databases were searched to conduct a meta-analysis of epidemiological
29 studies examining the relationship between air pollution and lipid parameter levels. Subgroup
30 analysis was additionally carried out for each air pollutant studied.

31 **Results:** A total of 2,274 records were retrieved, resulting in 10 studies included in the final
32 quantitative meta-analysis, comprising seven studies in Europe and the United States and three
33 studies in mainland China. Using a random-effect model, the results showed that for each 10
34 $\mu\text{g}/\text{m}^3$ increase in $\text{PM}_{2.5}$, TC, LDL-C, and HDL-C levels and metabolic syndrome (MetS)
35 incidence increased by 3.31% (95% CI: 2.29%, 8.91%), 2.34% (95% CI: 1.30%, 3.39%), -1.57%
36 (95% CI: -1.85%, -1.28%), and 4.33% (95% CI: 2.69%, 5.98%), respectively; for each 10 $\mu\text{g}/\text{m}^3$
37 increase in PM_{10} , TG, HDL-C, and LDL-C levels increased by 5.27% (95% CI: 2.03%, 8.50%),
38 -0.24% (95% CI: -0.95%, -0.47%), and 0.45% (95% CI: -0.57%, 1.47%), respectively; for each 10
39 $\mu\text{g}/\text{m}^3$ increase in NO_2 , TG and HDL-C levels increased by 4.18% (95% CI: 1.12%, 7.23%) and
40 -0.51% (95% CI: -2.61%, 1.58%), respectively. No significant associations were detected for
41 combinations of air pollutants on lipometabolic disturbance.

42 **Conclusion:** Increased air pollutant exposure was significantly associated with changes in blood
43 lipid parameter levels, which can be an indicator of the body's lipometabolic disturbance.

44 **Keywords:** air pollutant, particulate matter, lipoprotein, meta-analysis

45

46 **1. Introduction**

47 Air pollution is among the greatest environmental risks to global health(Cohen et al.,
48 2017; Lelieveld, Evans, Fnais, Giannadaki, & Pozzer, 2015; Shi et al., 2016). The World Health
49 Organization (WHO) estimates that ambient air pollution is responsible for nearly seven
50 million premature deaths worldwide every year(Landrigan et al., 2018). Major components of
51 atmospheric pollution include particulate matter of different diameter sizes, such as PM_{2.5}, PM₁₀,
52 UFP (ultrafine particulate matter), and gas compounds such as CO, NO_x, SO₂, O₃, among others.
53 Primarily deriving from fuel combustion, industrial emissions, transportation and ground dust,
54 these pollutants can cause serious harm to the human body(Runzhi, 2020 (In China)). A growing
55 body of evidence demonstrates the links between air pollution and cardiovascular
56 diseases(Akintoye et al., 2016; Combes & Franchineau, 2019; Lin et al., 2019; Zheng, Liu, Zhang,
57 & Chen, 2018), respiratory diseases(Dagenais et al., 2020; H. C. Huang et al., 2020; Schraufnagel
58 et al., 2019; Zu et al., 2017), and neurological disorders(Myung, Lee, & Kim, 2019; Seelen et al.,
59 2017; Thomson, 2019), among which cardiovascular disease is the leading cause of death in
60 low-income and middle-income countries(Yusuf et al., 2020). Conventionally, risk factors for
61 cardiovascular disease (CVD) have been associated with abnormal levels in lipoprotein-lipid
62 parameters, including low density lipoprotein cholesterol (LDL-C), high density lipoprotein
63 cholesterol (HDL-C), total cholesterol (TC), and triglycerides (TG), which may indicate
64 lipometabolic disturbance (Yuanning et al., 2019 (In China)). The co-occurrence of these
65 established risk factors, known collectively as metabolic syndrome (MetS), may therefore amplify
66 susceptibility to the CVD risks associated with air pollution exposure(Dabass et al., 2018; Eze et
67 al., 2015; Tsai, Lin, Chen, & Chu, 2018; Yang, Qian, et al., 2018).

68 The biological mechanism of exposure to air pollution and cardiovascular diseases remains
69 unclear. Five possible biologically plausible mechanisms(Weidong et al., 2018 (In China))
70 underscore the pathways through which exposure may lead to cardiovascular morbidity: first,
71 oxidative stress and inflammatory reactions; second, endothelial injury and dysfunction; third, an
72 imbalance in the function of the autonomic nervous system, fourth, changes in the function of
73 blood clotting; and fifth, lipid internal balance disorder. Among them, oxidative stress and
74 inflammatory reaction, as well as lipid internal balance disorder, most likely account for changes
75 in multiple lipid parameters associated with air pollution.

76 In recent years, studies have investigated the associations between air pollution and lipid
77 profile parameters, adding to evidence that suggests air pollution may contribute to changes in
78 blood lipid parameters(Cai et al., 2017; Hou et al., 2020; Lee et al., 2019; Vânia, Rita, Matias, &
79 Baltazar, 2019; Yang, Bloom, et al., 2018). However, most previous studies have been limited to
80 single air pollutants. To date, no systematic review has been found which offers a comprehensive
81 synthesis of the links between various atmospheric pollutants and lipid parameters. The aim of this
82 meta-analysis is to provide a comprehensive and quantitative overview of the literature regarding
83 the association between air pollutants (PM_{2.5}, PM₁₀, NO₂), lipid parameters (HDL-C, LDL-C, TC,
84 TG), and MetS morbidity.

85

86 **2. Materials and Methods**

87 2.1 Search Strategy

88 This study was conducted using standard methods which follow the Preferred Reporting
89 Items for Systematic Review and Meta-Analysis (PISMA)(J et al., 2020; "Preferred reporting

90 items for systematic review and meta-analysis protocols (PRISMA-P) 2015: elaboration and
91 explanation," 2016). Seven electronic databases, including China National Knowledge
92 Infrastructure (CNKI), Wanfang, Vip, SinoMed, Pubmed, EMBASE, and the Cochrane Library,
93 were searched for peer-reviewed articles published from 2000 to January 28, 2020. Keywords
94 searched included: ("Air Pollution" OR "Pollution, Air" OR "Air Quality" OR "Ultrafine Fibers"
95 OR "Airborne Particulate Matter" OR "Particulate Matter, Airborne" OR "Air Pollutants,
96 Particulate" OR "Particulate Air Pollutants" OR "Ambient Particulate Matter" OR "Particulate
97 Matter, Ambient" OR "Ultrafine Particulate Matter" OR "Particulate Matter, Ultrafine" OR
98 "Ultrafine Particles" OR "Particles, Ultrafine") AND ("Cardiovascular Disease" OR "Disease,
99 Cardiovascular" OR "Diseases, Cardiovascular" OR "HDL" OR "LDL" OR "cholesterol" OR
100 "cholesterin" OR "cholesteric" OR "TC" OR "TG" OR "dyslipidaemia" OR "HDL-C" OR
101 "LDL-C") AND ("Cohort" OR "Cross-sectional" OR "Case control" OR "Case-control" OR
102 "Epidemiology OR "Epidemiological"). Additionally, references of included literature and one
103 previously published systematic review were manually retrieved.

104

105 2.2 Eligibility Criteria

106 2.2.1 Inclusion Criteria

107 Studies were included if: (1) The study includes all population with no age, gender, or race
108 restrictions. (2) The study describes the relationship between particulate air pollutants and
109 metabolic disease/cardiovascular disease. (3) Results quantify changes in lipid parameters,
110 including HDL-C, LDL-C, TC, TG, etc. (4) Cross-sectional studies, cohort studies, or case control
111 studies. (5) The Literature is published in either Chinese or English.

112 2.2.2 Exclusion Criteria

113 Studies were excluded if: (1) The research was based on animal experiments or cytological
114 experiments. (2) The study was a review or meta-analysis. (3) The study was a duplicate. (4)
115 Effect estimates were not reported as a percent change in lipid metabolism per $10 \mu\text{g}/\text{m}^3$ change in
116 particulate air pollutants. (5) The data reported resulted from an independent study. If inconsistent
117 results have been reported for a given population or period at the time publications were retrieved,
118 older studies were superseded by the most recent publication.

119

120 2.3 Literature Screening and Quality Evaluation

121 Two researchers independently retrieved and screened the literature following the above
122 order and criteria. Upon review, a third researcher was consulted when discrepancies occurred.
123 The methodological quality of each cohort study was evaluated according to the
124 Newcastle-Ottawa Scale (NOS) literature quality evaluation tool(Luchini, Stubbs, Solmi, &
125 Veronese, 2017), which includes three aspects of population selection, comparability, and results.
126 A total of 8 items belonging to NOS could be graded by an “*” for each item, and the top score
127 can include up to 9 “*”. Cross-sectional studies were assessed by the American Health Care
128 Quality and Research Institute (AHRQ) scale for quality evaluation(B, 2017). An 11-point scale is
129 used to calculate responses of either “Yes”, “No”, or “Not clear”, for a total score of 11.

130

131 2.4 Data extraction and statistical analysis

132 Information was independently extracted by two researchers based on a pre-set data
133 extraction form which included: author name(s), year of publication, study period, location,

134 population, median age, sample size, experimental design type, exposure time, and contaminants.

135 Divergent interpretations were reconciled by a third researcher.

136 When the literature data were extracted, the percent changes in lipid metabolism per 10

137 $\mu\text{g}/\text{m}^3$ change in particulate air pollutants were directly utilized. As such, the results presented in

138 this meta-analysis are expressed as the percentage change in lipid parameters and MetS incidence

139 for each 10 $\mu\text{g}/\text{m}^3$ increment in air pollutant. The between-study heterogeneity was evaluated

140 using both the I^2 statistic and Q-test(Huedo-Medina, Sanchez-Meca, Marin-Martinez, & Botella,

141 2006). If $I^2 \geq 50\%$ or the p-value for a Q-test was < 0.01 , then heterogeneity was considered “high”

142 and the Der Simonian and Laird random effects model was used to pool effect estimates.

143 Otherwise, heterogeneity was considered “moderate” or “low” and the Mantel-Haenszel fixed

144 effects model was used to pool effect estimates. The Meta-analysis was performed using Stata

145 software version 14.0. A p-value < 0.05 was considered statistically significant.

146

147 **3. Results**

148 3.1 Literature Retrieval and Characteristics

149 A total of 2,274 records were obtained from multiple databases. After duplicates were

150 removed, the titles and abstracts of 1,714 records were screened. 1,154 full-text publications were

151 subsequently assessed using the eligibility criteria. As a result, ten records met all criteria and

152 were included in the final quantitative meta-analysis(Cai et al., 2017; Hou et al., 2020; Lee et al.,

153 2019; Shanley et al., 2016; Sorensen et al., 2015; Wallwork et al., 2017; Wang et al., 2018; Wu et

154 al., 2019; Yang, Bloom, et al., 2018; Yitshak Sade, Kloog, Liberty, Schwartz, & Novack, 2016). A

155 flow diagram of the study selection process is shown in the Fig. 1.

156 Overall, this study includes a total of ten records comprising eight cohort studies(Cai et al.,
157 2017; Lee et al., 2019; Shanley et al., 2016; Wallwork et al., 2017; Wang et al., 2018; Wu et al.,
158 2019; Yang, Bloom, et al., 2018; Yitshak Sade et al., 2016) and two cross-sectional studies(Hou et
159 al., 2020; Sorensen et al., 2015). An exposure time of less than or equal to thirty days was
160 recorded as short-term exposure, whereas an exposure time greater than thirty days was recorded
161 as long-term exposure. Study characteristics are summarized in Table 1.

162

163 3.2 Quality Evaluation

164 Using the NOS scale to evaluate eight cohort studies, one study was less representative, three
165 studies were less comparable, six mentioned follow-ups, eight mentioned the specific
166 measurement methods from which the results were derived, and six were subject to the integrity of
167 follow-up. For this quality evaluation, a study was awarded one “*”, corresponding to one point,
168 for each NOS item it contained. Using the AHRQ scale to evaluate two cross-sectional studies,
169 both mentioned the source of data, patient identification time period, follow-up situation, and
170 continuity of the subject. For evaluation, “yes” was recorded as one point, whereas “no” or
171 “uncertain” was recorded as zero for each component of the AHRQ scale. Final scores for each
172 respective study is summarized in Table 1.

173

174 3.3 Data Extraction and Conversion

175 The results of the data extraction of the ten records are shown in Table 2. The growth rate of
176 particulate air pollutants varied from study to study. As such, in order to pool data for further
177 analysis, original data from each study was uniformly converted to the rate of change of each lipid

178 parameter per 10 $\mu\text{g}/\text{m}^3$ increment change in air pollutant. A complete list of converted results is
179 reported in Table 3.

180

181 3.4 Quantitative Meta-analysis

182 Based on a quantitative comparison of the ten studies included in the analysis, a total of
183 twelve groups were identified to characterize the relationship between particulate air pollutants
184 and lipid parameters, including $\text{PM}_{2.5}/\text{TC}$; $\text{PM}_{2.5}/\text{HDL-C}$; $\text{PM}_{2.5}/\text{LDL-C}$; $\text{PM}_{2.5}/\text{MetS}$; PM_{10}/TG ;
185 $\text{PM}_{10}/\text{LDL-C}$; $\text{PM}_{10}/\text{HDL-C}$; NO_2/TC ; NO_2/TG ; $\text{NO}_2/\text{HDL-C}$; $\text{PM}_{10}/\text{HDL-C}$ (diabetic population);
186 $\text{PM}_{10}/\text{LDL-C}$ (diabetic population).After data conversion, these effect estimates were analyzed
187 using twelve different analyses for each pollutant/outcome combination.

188 3.4.1 $\text{PM}_{2.5}$ with TC, HDL-C, LDL-C, and MetS(Lee et al., 2019; Sorensen et al., 2015; Wu et al.,
189 2019; Yang, Bloom, et al., 2018)

190 $\text{PM}_{2.5}$ exposure was significantly associated with TC, HDL-C, LDL-C, and MetS.
191 Specifically, for each 10 $\mu\text{g}/\text{m}^3$ increase in $\text{PM}_{2.5}$, TC levels increased by 3.31% (95% CI:
192 -0.0229~0.0891, $P=0.046$), LDL-C levels increased by 2.34% (95% CI: 0.0130~0.0339, $P=0.001$),
193 HDL-C levels decreased 1.57% (95% CI: -0.0185~-0.0128, $P=0.001$), and the MetS increased by
194 4.33% (95% CI: 0.0269~0.0598, $P<0.001$) (See Fig. 2).

195 3.4.2 PM_{10} with TG, HDL-C, and LDL-C(Cai et al., 2017; Shanley et al., 2016; Yang, Bloom, et
196 al., 2018; Yitshak Sade et al., 2016)

197 PM_{10} exposure was significantly associated with TG, HDL-C, LDL-C. Specifically, for each
198 10 $\mu\text{g}/\text{m}^3$ increase in PM_{10} , TG levels increased by 5.27% (95% CI: 0.0203~0.0850, $P<0.001$),
199 HDL-C levels decreased by 0.24% (95% CI: -0.0095~-0.0047, $P=0.002$), and LDL-C levels

200 increased by 0.45% (95% CI: -0.057~0.0147, P<0.001) (See Fig. 3).

201 3.4.3 NO₂ with TG, HDL-C, and TC(Cai et al., 2017; Sorensen et al., 2015; Yang, Bloom, et al.,
202 2018)

203 NO₂ exposure was associated with TG and HDL-C; however, was not significantly associated
204 with TC. Specifically, for each 10 µg/m³ increase in NO₂, TG levels increased by 4.18% (95% CI:
205 0.0112~0.0723, P=0.020), and HDL-C levels decreased by 0.51% (95% CI: -0.0261~0.0158,
206 P<0.001). TC levels increased by 1.01% (95% CI: 0.0035~0.0167, P=0.858) (See Fig. 4).

207 3.4.4 PM₁₀ with LDL-C and HDL-C in diabetic population(Wang et al., 2018; Yitshak Sade et al.,
208 2016)

209 Three studies included subjects with diabetes mellitus, suggesting differential modification of
210 LDL-C and HDL-C levels associated with PM₁₀ exposure. PM₁₀ exposure was significantly
211 associated with HDL-C levels, but not with LDL-C levels. For each 10 µg/m³ increase in PM₁₀,
212 HDL-C levels decreased 0.45% (95% CI: -0.0072~-0.0017, P=0.009), while LDL-C increased by
213 1.14% (95% CI: 0.0090~0.00138, P=0.265) (See Fig. 5).

214

215 **4 Discussion**

216 This meta-analysis found significant associations between PM_{2.5}, PM₁₀, and NO₂, and
217 lipoprotein parameters, with evidence of substantial between-study heterogeneity. These findings
218 add to evidence that MetS may increase susceptibility to cardiovascular morbidity associated with
219 air pollution exposure.

220 Gaio et al.(Vânia et al., 2019) reported that LDL-C and TG levels increased by 0.12% (95%
221 CI: 0.0178~0.0206) and 3.14% (95% CI: 0.0136~0.0495) respectively, per 10

222 $\mu\text{g}/\text{m}^3$ increase in PM_{10} , which is consistent with our study, although effect estimates were smaller
223 than the current study. They also observed a decrease of 0.45% (95% CI: -0.0265~-0.0181) in
224 HDL-C levels per 10 $\mu\text{g}/\text{m}^3$ increase in NO_2 , but no statistically significant changes in TC. When
225 considering the differences between the two studies, such factors as the use of differential
226 inclusion and exclusion criteria for screening may have resulted in more or less robust records for
227 final selection. To the extent that studies focused on associations between particulate air pollutants
228 and lipometabolic disturbance were much less based on the pre-search, the inclusion criteria in our
229 study were broader, while the exclusion criteria were similar to the meta-analysis by Gaio et al. As
230 a result, our study included an additional study by Maayan et al.(Yitshak Sade et al., 2016) in the
231 subgroup category for studies investigating the relationship between PM_{10} exposures and LDL-C
232 and TG levels. In this study, $\text{PM}_{2.5}$ was more significantly associated with multiple lipid
233 parameters compared to PM_{10} , which is consistent with findings by Hazrije et al.(Mustafić et al.,
234 2012); however, Hazrije et al.(Mustafić et al., 2012) reported a stronger association between
235 myocardial infarction and $\text{PM}_{2.5}$ compared to PM_{10} . This may result from the differential
236 characteristics of $\text{PM}_{2.5}$ such as smaller diameter size, larger surface area, slower sedimentation
237 rate, and longer retention time in the air compared to PM_{10} .

238 This paper reported that elevated PM_{10} exposure on the diabetic population was associated
239 with higher HDL-C levels, but not significantly associated with LDL-C levels. This was only
240 partially consistent with the study by Wang et al.(Minzhen & Shan, 2018 (In China)), which
241 reported significant associations between PM_{10} exposure and both HDL-C levels and LDL-C
242 levels. Such discrepancy may be due to differences in the characteristics of the study population.
243 Further, two studies(Wang et al., 2018; Yitshak Sade et al., 2016) included in this meta-analysis

244 contained subjects with diabetes using data obtained from medical institutions, whereas the Wang
245 et al.(Minzhen & Shan, 2018 (In China)) had the advantage of follow-up throughout the study
246 period, which may have provided a more precise measure of changes in lipid parameters.

247 The present study suggests that air pollution may adversely affect lipometabolic balance by
248 promoting LDL oxidation, disrupting the scavenger receptor and LDL receptor body function,
249 accelerating the accumulation of lipids in plaque(Fuertes, Plaat, & Minelli, 2020; Miller, 2020).
250 HDL, as a protective factor for lipid metabolic disorders, decreased in levels when exposed to air
251 pollutants(Bell et al., 2017).

252 Despite a considerably inclusive search strategy, with few restrictions on study design and
253 population characteristics, our final selection yielded 10 qualified studies for this meta-analysis.
254 We detected high between-study heterogeneity in most of the subgroups studied, which, taken
255 together, may attenuate credibility with cumulative evidence. Yet, heterogeneity may be captured
256 by unmeasured variables that were not reported such as population susceptibility, temperature,
257 distribution of air pollutants or other potential sources(Liu et al., 2019; Ward-Caviness, 2019).

258 There are some limitations that should be addressed. First, most of the literature failed to
259 consider whether subjects had taken lipid-lowering drugs or related drugs using history before or
260 during the study period, which may bias results and lead to less positive change in blood lipid
261 parameter levels(Ho & Hee, 2015). Furthermore, evidence suggests that noise intensity can
262 directly impact lipid parameters levels(Cai et al., 2017; Y.-K. Huang, Hanneke, & Jones, 2019;
263 Jørgensen et al., 2019; Klompmaker et al., 2019; Shapovalova, Ryzhova, & Ryzhov, 2010;
264 Sorensen et al., 2015). Considering noise has obvious geographical distribution characteristics, i.e.,
265 urban residential areas typically have higher levels of noise intensity than rural or remote areas,

266 and that distance between residential areas and main roadways could fluctuate multiple lipid
267 parameters, future analyses should further examine noise intensity as a possible confounding risk
268 factor. Similarly, green spaces near residential areas or workplaces have been shown to influence
269 lipometabolic balance and should additionally be included as a confounding variable(Ji, Zhu, Lv,
270 & Shi, 2019; Klompaker et al., 2019; Yang et al., 2019). Moreover, residential greenness has
271 been shown elsewhere to have a beneficial effect on MetS and diabetes; accordingly, this
272 association could be attenuated after adjustment for air pollution(Thiering et al., 2016; Yang et al.,
273 2020). To quantify air pollution exposure, many studies(Cai et al., 2017; Hou et al., 2020; Lee et
274 al., 2019; Shanley et al., 2016; Sorensen et al., 2015; Wang et al., 2018) use ground-based
275 measurements derived from fixed air quality monitoring sites. While other studies(Wallwork et al.,
276 2017; Wu et al., 2019; Yang, Bloom, et al., 2018; Yitshak Sade et al., 2016) incorporate predictive
277 models estimated from spatiotemporal hybrid modeling. More specifically, models may utilize
278 low-cost GPS on mobile devices to monitor an average individual exposure to air pollutants in real
279 time, over the study period. Such methods greatly increase the accuracy of measurements and may
280 reflect a better estimate of true exposure to air pollutants. Despite the limitations, previous studies
281 have focused on the relationship between blood lipid parameters levels and a single air pollutant.
282 Examining the effects of air pollution exposure one pollutant at a time underestimates the
283 complexity of atmospheric chemical mixing and the multiple pollutant sources implicated in the
284 link between air pollution exposure and adverse health, and more specifically, the nuanced effects
285 of various pollutants on blood lipid parameters.

286

287 **5 Conclusion**

288 This study found that PM₁₀, PM_{2.5}, and NO₂ were significantly associated with HDL-C,
289 LDL-C, TC, and TG levels, suggesting a link between air pollution and cardiovascular morbidity.
290 Therefore, improving air quality may yield substantial health benefits.

291

292 **Declaration of Competing Interest**

293 The authors declare no competing interests.

294

295 **Acknowledgements**

296 This work was supported by the National Natural Science Foundation of China (81872649),
297 National Key R&D Program of China (2017YFC0211600), Scientific Research Project of Beijing
298 Educational Committee (KM201910025023), and HERCULES Exposome Research Centre
299 (P30ES019776).

References

- Akintoye, E., Shi, L., Obaitan, I., Olusunmade, M., Wang, Y., Newman, J. D., & Dodson, J. A. (2016). Association between fine particulate matter exposure and subclinical atherosclerosis: A meta-analysis. *European journal of preventive cardiology*, *23*(6), 602-612. doi:10.1177/2047487315588758
- B, B. A. (2017). The Agency for Healthcare Research and Quality and the Development of a Learning Health Care System. *JAMA internal medicine*, *177*(7). doi:10.1001/jamainternmed.2017.2589
- Bell, G., Mora, S., Greenland, P., Tsai, M., Gill, E., & Kaufman, J. D. (2017). Association of Air Pollution Exposures With High-Density Lipoprotein Cholesterol and Particle Number: The Multi-Ethnic Study of Atherosclerosis. *Arteriosclerosis, thrombosis, and vascular biology*, *37*(5), 976-982. doi:10.1161/atvbaha.116.308193
- Cai, Y., Hansell, A. L., Blangiardo, M., Burton, P. R., de Hoogh, K., Doiron, D., . . . Hodgson, S. (2017). Long-term exposure to road traffic noise, ambient air pollution, and cardiovascular risk factors in the HUNT and lifelines cohorts. *European heart journal*, *38*(29), 2290-2296. doi:10.1093/eurheartj/ehx263
- Cohen, A. J., Brauer, M., Burnett, R., Anderson, H. R., Frostad, J., Estep, K., . . . Forouzanfar, M. H. (2017). Estimates and 25-year trends of the global burden of disease attributable to ambient air pollution: an analysis of data from the Global Burden of Diseases Study 2015. *Lancet (London, England)*, *389*(10082), 1907-1918. doi:10.1016/s0140-6736(17)30505-6

- Combes, A., & Franchineau, G. (2019). Fine particle environmental pollution and cardiovascular diseases. *Metabolism: Clinical and Experimental*, 100. doi:10.1016/j.metabol.2019.07.008
- Dabass, A., Talbott, E. O., Rager, J. R., Marsh, G. M., Venkat, A., Holguin, F., & Sharma, R. K. (2018). Systemic inflammatory markers associated with cardiovascular disease and acute and chronic exposure to fine particulate matter air pollution (PM2.5) among US NHANES adults with metabolic syndrome. *Environmental research*, 161, 485-491. doi:10.1016/j.envres.2017.11.042
- Dagenais, G. R., Leong, D. P., Rangarajan, S., Lanas, F., Lopez-Jaramillo, P., Gupta, R., . . . Yusuf, S. (2020). Variations in common diseases, hospital admissions, and deaths in middle-aged adults in 21 countries from five continents (PURE): a prospective cohort study. *The Lancet*, 395(10226), 785-794. doi: 10.1016/S0140-6736(19)32007-0
- Eze, I. C., Schaffner, E., Foraster, M., Imboden, M., von Eckardstein, A., Gerbase, M. W., . . . Probst-Hensch, N. (2015). Long-Term Exposure to Ambient Air Pollution and Metabolic Syndrome in Adults. *PloS one*, 10(6), e0130337. doi:10.1371/journal.pone.0130337
- Fuertes, E., Plaat, D. A. v. d., & Minelli, C. (2020). Antioxidant genes and susceptibility to air pollution for respiratory and cardiovascular health. *Free Radical Biology and Medicine*. doi:10.1016/j.freeradbiomed.2020.01.181
- Ho, A. C., & Hee, C. S. (2015). New drugs for treating dyslipidemia: beyond statins. *Diabetes & metabolism journal*, 39(2). doi:10.4093/dmj.2015.39.2.87
- Hou, J., Liu, X., Tu, R., Dong, X., Zhai, Z., Mao, Z., . . . Wang, C. (2020). Long-term exposure

to ambient air pollution attenuated the association of physical activity with metabolic syndrome in rural Chinese adults: A cross-sectional study. *Environment international*, *136*, 105459. doi:10.1016/j.envint.2020.105459

Huang, H. C., Tantoh, D. M., Hsu, S. Y., Nfor, O. N., Frank, C. F. L., Lung, C. C., . . . Liaw, Y. P. (2020). Association between coarse particulate matter (PM 10-2.5) and nasopharyngeal carcinoma among Taiwanese men. *Journal of Investigative Medicine*, *68*(2), 419-424. doi:10.1136/jim-2019-001119

Huang, Y.-K., Hanneke, R., & Jones, R. M. (2019). Bibliometric analysis of cardiometabolic disorders studies involving NO₂, PM_{2.5} and noise exposure. *BMC public health*, *19*(1), 877-877. doi:10.1186/s12889-019-7195-1

Huedo-Medina, T. B., Sanchez-Meca, J., Marin-Martinez, F., & Botella, J. (2006). Assessing heterogeneity in meta-analysis: Q statistic or I² index? *Psychol Methods*, *11*(2), 193-206. doi:10.1037/1082-989x.11.2.193

J, P. M., E, M. J., M, B. P., Isabelle, B., Tammy, H., D, M. C., . . . David, M. (2020). Mapping of reporting guidance for systematic reviews and meta-analyses generated a comprehensive item bank for future reporting guidelines. *Journal of clinical epidemiology*, *118*. doi:10.1016/j.jclinepi.2019.11.010

Ji, J. S., Zhu, A., Lv, Y., & Shi, X. (2019). Residential greenness and air pollution mortality using the Chinese Longitudinal Healthy Longevity Survey: a longitudinal analysis. *The Lancet*, *394*, S16. doi:10.1016/S2542-5196(20)30027-9

Jørgensen, J. T., Bräuner, E. V., Backalarz, C., Laursen, J. E., Pedersen, T. H., Jensen, S. S., . . . Andersen, Z. J. (2019). Long-term exposure to road traffic noise and incidence

of diabetes in the danish nurse cohort. *Environmental health perspectives*, 127(5).

doi:10.1289/EHP4389

Klompaker, J. O., Janssen, N. A. H., Bloemasma, L. D., Gehring, U., Wijga, A. H., Brink, C.

V., . . . Hoek, G. (2019). Associations of combined exposures to surrounding green, air pollution, and road traffic noise with cardiometabolic diseases. *Environmental health perspectives*, 127(8). doi:10.1289/EHP3857

Landrigan, P. J., Fuller, R., Acosta, N. J. R., Adeyi, O., Arnold, R., Basu, N., . . . Zhong, M.

(2018). The Lancet Commission on pollution and health. *The Lancet*, 391(10119), 462-512. doi: 10.1016/S0140-6736(17)32345-0

Lee, S., Park, H., Kim, S., Lee, E.-K., Lee, J., Hong, Y. S., & Ha, E. (2019). Fine particulate

matter and incidence of metabolic syndrome in non-CVD patients: A nationwide population-based cohort study. *International journal of hygiene and environmental health*, 222(3), 533-540. doi:10.1016/j.ijheh.2019.01.010

Lelieveld, J., Evans, J. S., Fnais, M., Giannadaki, D., & Pozzer, A. (2015). The contribution of

outdoor air pollution sources to premature mortality on a global scale. *Nature*, 525(7569), 367-371. doi:10.1038/nature15371

Lin, Z., Chen, R., Jiang, Y., Xia, Y., Niu, Y., Wang, C., . . . Kan, H. (2019). Cardiovascular

Benefits of Fish-Oil Supplementation Against Fine Particulate Air Pollution in China. *Journal of the American College of Cardiology*, 73(16), 2076-2085. doi:10.1016/j.jacc.2018.12.093

Liu, M., Xue, X., Zhou, B., Zhang, Y., Sun, B., Chen, J., & Li, X. (2019). Population

susceptibility differences and effects of air pollution on cardiovascular mortality:

epidemiological evidence from a time-series study. *Environmental science and pollution research international*, 26(16), 15943-15952.

doi:10.1007/s11356-019-04960-2

Luchini, C., Stubbs, B., Solmi, M., & Veronese, N. (2017). Assessing the quality of studies in meta-analyses: Advantages and limitations of the Newcastle Ottawa Scale. *World Journal of Meta-Analysis*, 5(04), 80-84. doi: 10.1093/humrep/dew244

Miller, M. R. (2020). Oxidative stress and the cardiovascular effects of air pollution. *Free Radical Biology and Medicine*. doi:10.1016/j.freeradbiomed.2020.01.004

Minzhen, W., & Shan, Z. (2018 (In China)). Research progress on the effects of atmospheric PM_{2.5} exposure on type 2 diabetes in people. *Journal of Environmental and Occupational Medicine*, 35(02), 137-142. doi:10.13213/j.cnki.jeom.2018.17454

Mustafić, H., Jabre, P., Caussin, C., Murad, M. H., Escolano, S., Tafflet, M., . . . Jouven, X. (2012). Main Air Pollutants and Myocardial Infarction: A Systematic Review and Meta-analysis. *JAMA: The Journal of the American Medical Association*, 307(7). doi:10.1001/jama.2012.126

Myung, W., Lee, H., & Kim, H. (2019). Short-term air pollution exposure and emergency department visits for amyotrophic lateral sclerosis: A time-stratified case-crossover analysis. *Environment international*, 123, 467-475. doi:10.1016/j.envint.2018.12.042

Preferred reporting items for systematic review and meta-analysis protocols (PRISMA-P) 2015: elaboration and explanation. (2016). *BMJ (Clinical research ed.)*, 354, i4086. doi:10.1136/bmj.i4086

Runzhi, C. (2020 (In China)). The effects of major atmospheric pollutants on population health

and its response progress. *Chinese Journal of Public Health Management*, 36(01), 51-53. doi:10.19568/j.cnki.23-1318.2020.02.037

Schraufnagel, D. E., Balmes, J. R., Cowl, C. T., De Matteis, S., Jung, S. H., Mortimer, K., . . .

Wuebbles, D. J. (2019). Air Pollution and Noncommunicable Diseases: A Review by the Forum of International Respiratory Societies' Environmental Committee, Part 2: Air Pollution and Organ Systems. *Chest*, 155(2), 417-426. doi:10.1016/j.chest.2018.10.041

Seelen, M., Toro Campos, R. A., Veldink, J. H., Visser, A. E., Hoek, G., Brunekreef, B., . . .

Vermeulen, R. C. H. (2017). Long-Term Air Pollution Exposure and Amyotrophic Lateral Sclerosis in Netherlands: A Population-based Case-control Study. *Environmental health perspectives*, 125(9), 097023-097023. doi:10.1289/EHP1115

Shanley, R. P., Hayes, R. B., Cromar, K. R., Ito, K., Gordon, T., & Ahn, J. (2016). Particulate

Air Pollution and Clinical Cardiovascular Disease Risk Factors. *Epidemiology (Cambridge, Mass.)*, 27(2), 291-298. doi:10.1097/ede.0000000000000426

Shapovalova, V. P., Ryzhova, T. V., & Ryzhov, V. M. (2010). Lipid metabolism state under

exposure to noise and aluminum dust. *Meditsina truda i promyshlennaia ekologiia*(7), 18-20. Retrieved from <https://www.ncbi.nlm.nih.gov/pubmed/20853625>

Shi, L., Zanobetti, A., Kloog, I., Coull, B. A., Koutrakis, P., Melly, S. J., & Schwartz, J. D. (2016).

Low-Concentration PM2.5 and Mortality: Estimating Acute and Chronic Effects in a Population-Based Study. *Environmental health perspectives*, 124(1), 46-52. doi:10.1289/ehp.1409111

Sorensen, M., Hjortebjerg, D., Eriksen, K. T., Ketzel, M., Tjønneland, A., Overvad, K., &

- Raaschou-Nielsen, O. (2015). Exposure to long-term air pollution and road traffic noise in relation to cholesterol: A cross-sectional study. *Environment international*, *85*, 238-243. doi:10.1016/j.envint.2015.09.021
- Thiering, E., Markevych, I., Brüske, I., Fuertes, E., Kratzsch, J., Sugiri, D., . . . Heinrich, J. (2016). Associations of Residential Long-Term Air Pollution Exposures and Satellite-Derived Greenness with Insulin Resistance in German Adolescents. *Environmental health perspectives*, *124*(8), 1291-1298. doi:10.1289/ehp.1509967
- Thomson, E. M. (2019). Air Pollution, Stress, and Allostatic Load: Linking Systemic and Central Nervous System Impacts. *Journal of Alzheimer's Disease*, *69*(3), 597-614. doi:10.3233/JAD-190015
- Tsai, S.-S., Lin, Y.-S., Chen, S.-T., & Chu, P.-H. (2018). Metabolic syndrome positively correlates with the risks of atherosclerosis and diabetes in a Chinese population. *European Journal of Internal Medicine*. doi:10.1016/j.ejim.2018.04.009
- Vânia, G., Rita, R., Matias, D. C., & Baltazar, N. (2019). Ambient air pollution and lipid profile: Systematic review and meta-analysis. *Environmental pollution (Barking, Essex: 1987)*, *254*(Pt B). doi:10.1016/j.envpol.2019.113036
- Wallwork, R. S., Colicino, E., Zhong, J., Kloog, I., Coull, B. A., Vokonas, P., . . . Baccarelli, A. A. (2017). Ambient fine particulate matter, outdoor temperature, and risk of met. *American journal of epidemiology*, *185*(1), 30-39. doi:10.1093/aje/kww157
- Wang, M., Zheng, S., Nie, Y., Weng, J., Cheng, N., Hu, X., . . . Bai, Y. (2018). Association between short-term exposure to air pollution and dyslipidemias among type 2 diabetic patients in Northwest China: A population-based study. *International journal of*

environmental research and public health, 15(4). doi:10.3390/ijerph15040631

- Ward-Caviness, C. K. (2019). A review of gene-by-air pollution interactions for cardiovascular disease, risk factors, and biomarkers. *Hum Genet*, 138(6), 547-561. doi:10.1007/s00439-019-02004-w
- Weidong, W., Zhen, A., Shuangjun, G., Jie, X., Wei, F., & Jie, S. (2018 (In China)). Research progress on the development of atherosclerosis induced by PM_{2.5} exposure. *Journal of Shandong University (Health Science)*, 56(11), 18-26. Retrieved from <http://www.cnki.com.cn/Article/CJFDTotol-SDYB201811004.htm>
- Wu, X. M., Broadwin, R., Basu, R., Malig, B., Ebisu, K., Gold, E. B., . . . Green, S. (2019). Associations between fine particulate matter and changes in lipids/lipoproteins among midlife women. *Science of the Total Environment*, 654, 1179-1186. doi:10.1016/j.scitotenv.2018.11.149
- Yang, B. Y., Bloom, M. S., Markevych, I., Qian, Z. M., Vaughn, M. G., Cummings-Vaughn, L. A., . . . Dong, G. H. (2018). Exposure to ambient air pollution and blood lipids in adults: The 33 Communities Chinese Health Study. *Environment international*, 119, 485-492. doi:10.1016/j.envint.2018.07.016
- Yang, B. Y., Liu, K. K., Markevych, I., Knibbs, L. D., Bloom, M. S., Dharmage, S. C., . . . Dong, G. H. (2020). Association between residential greenness and metabolic syndrome in Chinese adults. *Environment international*, 135. doi:10.1016/j.envint.2019.105388
- Yang, B. Y., Markevych, I., Heinrich, J., Bloom, M. S., Qian, Z., Geiger, S. D., . . . Dong, G. H. (2019). Residential greenness and blood lipids in urban-dwelling adults: The 33 Communities Chinese Health Study. *Environmental Pollution*, 250, 14-22.

doi:10.1016/j.envpol.2019.03.128

Yang, B. Y., Qian, Z. M., Li, S., Fan, S., Chen, G., Syberg, K. M., . . . Dong, G. H. (2018).

Long-term exposure to ambient air pollution (including PM₁) and metabolic syndrome:

The 33 Communities Chinese Health Study (33CCHS). *Environmental research*, 164,

204-211. doi:10.1016/j.envres.2018.02.029

Yitshak Sade, M., Kloog, I., Liberty, I. F., Schwartz, J., & Novack, V. (2016). The Association

Between Air Pollution Exposure and Glucose and Lipids Levels. *The Journal of clinical*

endocrinology and metabolism, 101(6), 2460-2467. doi:10.1210/jc.2016-1378

Yuanning, L., Aiqun, H., Hui, Z., Wenqin, W., Yanfen, L., & Mei, X. (2019 (In China)).

Application of combined detection of TC, TG, HDL-C, LDL -C, ApoA1 and ApoB in cardiovascular and cerebrovascular diseases. *Medical Journal of Liaoning*, 33(01),

50-52.

Retrieved

from

<http://www.cnki.com.cn/Article/CJFDTOTAL-LNYX201901019.htm>

Yusuf, S., Joseph, P., Rangarajan, S., Islam, S., Mente, A., Hystad, P., . . . Dagenais, G.

(2020). Modifiable risk factors, cardiovascular disease, and mortality in 155□722

individuals from 21 high-income, middle-income, and low-income countries (PURE): a

prospective cohort study. *The Lancet*, 395(10226), 795-808.

doi:10.1016/S0140-6736(19)32008-2

Zheng, Q., Liu, H., Zhang, J., & Chen, D. (2018). The effect of ambient particle matters on

hospital admissions for cardiac arrhythmia: A multi-city case-crossover study in China.

Environmental Health: A Global Access Science Source, 17(1).

doi:10.1186/s12940-018-0404-z

Zu, K., Liu, X., Shi, L., Tao, G., Loftus, C. T., Lange, S., & Goodman, J. E. (2017).

Concentration-response of short-term ozone exposure and hospital admissions for
asthma in Texas. *Environment international*, *104*, 139-145.

doi:10.1016/j.envint.2017.04.006

Figure Legend

Fig.1. Flow diagram of study selection process.

Fig.2. Forest plot of PM_{2.5} exposure (per 10 µg/m³ increase) with changes of TC, HDL-C, LDL levels and MetS morbidity. (* % change in the outcome per 10 mg/m³ pollutant increase.

Abbreviations: I²=measure of between-study heterogeneity; P=Cochran's Q test P-value.)

Fig.3. Forest plot of PM₁₀ exposure (per 10 µg/m³ increase) with changes of TG, LDL-C, and HDL-C levels. (* % change in the outcome per 10 mg/m³ pollutant increase. Abbreviations: I²

=measure of between-study heterogeneity; P=Cochran's Q test P-value.)

Fig.4. Forest plot of NO₂ exposure (per 10 µg/m³ increase) with changes of TC, TG and HDL-C levels. (* % change in the outcome per 10 mg/m³ pollutant increase. Abbreviations: I²=measure

of between-study heterogeneity; P=Cochran's Q test P-value.)

Fig.5. Forest plot of PM₁₀ exposure (per 10 µg/m³ increase) with changes of HDL-C and LDL-C levels in diabetic population. (* % change in the outcome per 10 mg/m³ pollutant increase.

Abbreviations: I²=measure of between-study heterogeneity; P=Cochran's Q test P-value.)

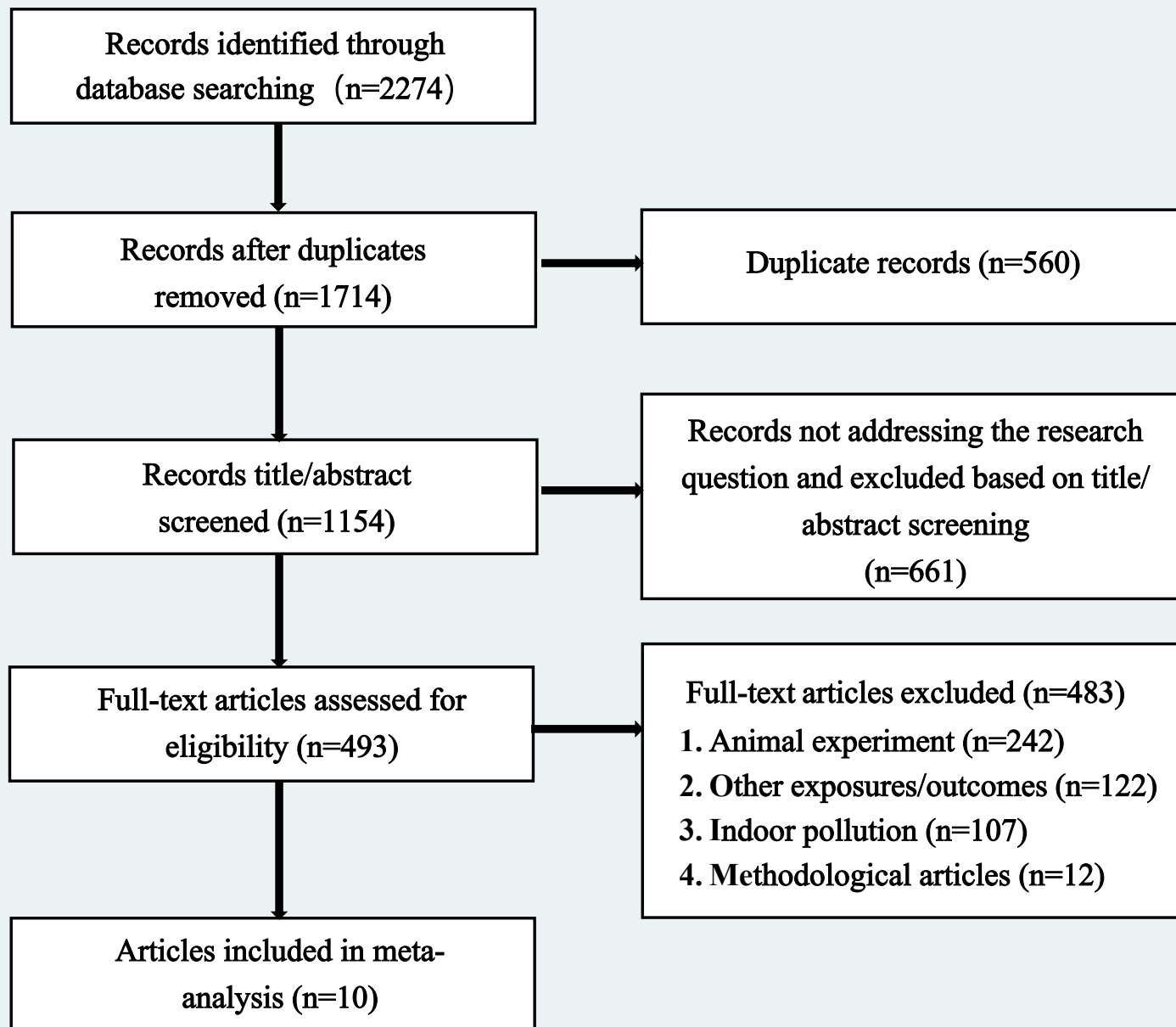


Figure 1

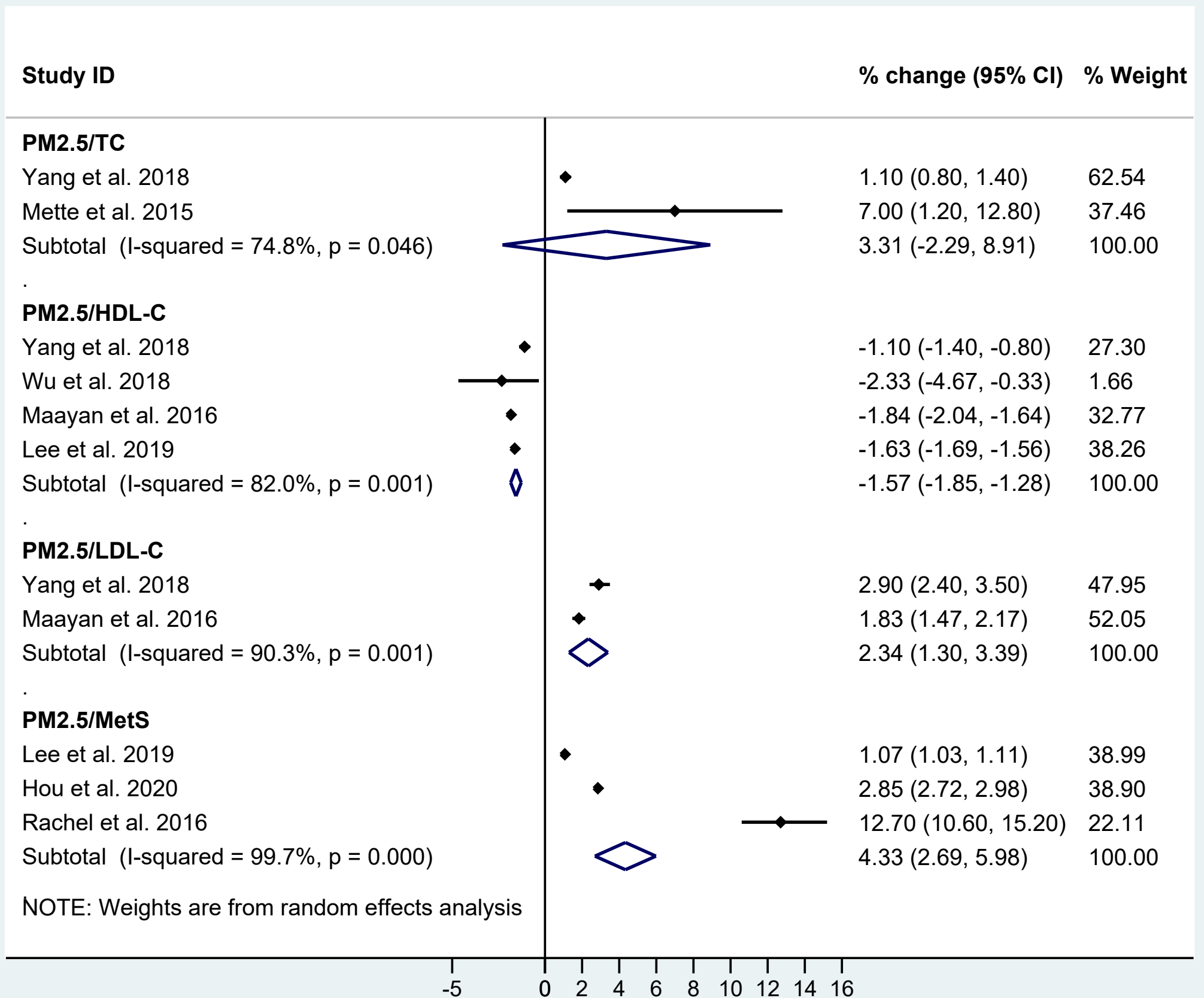


Figure 2

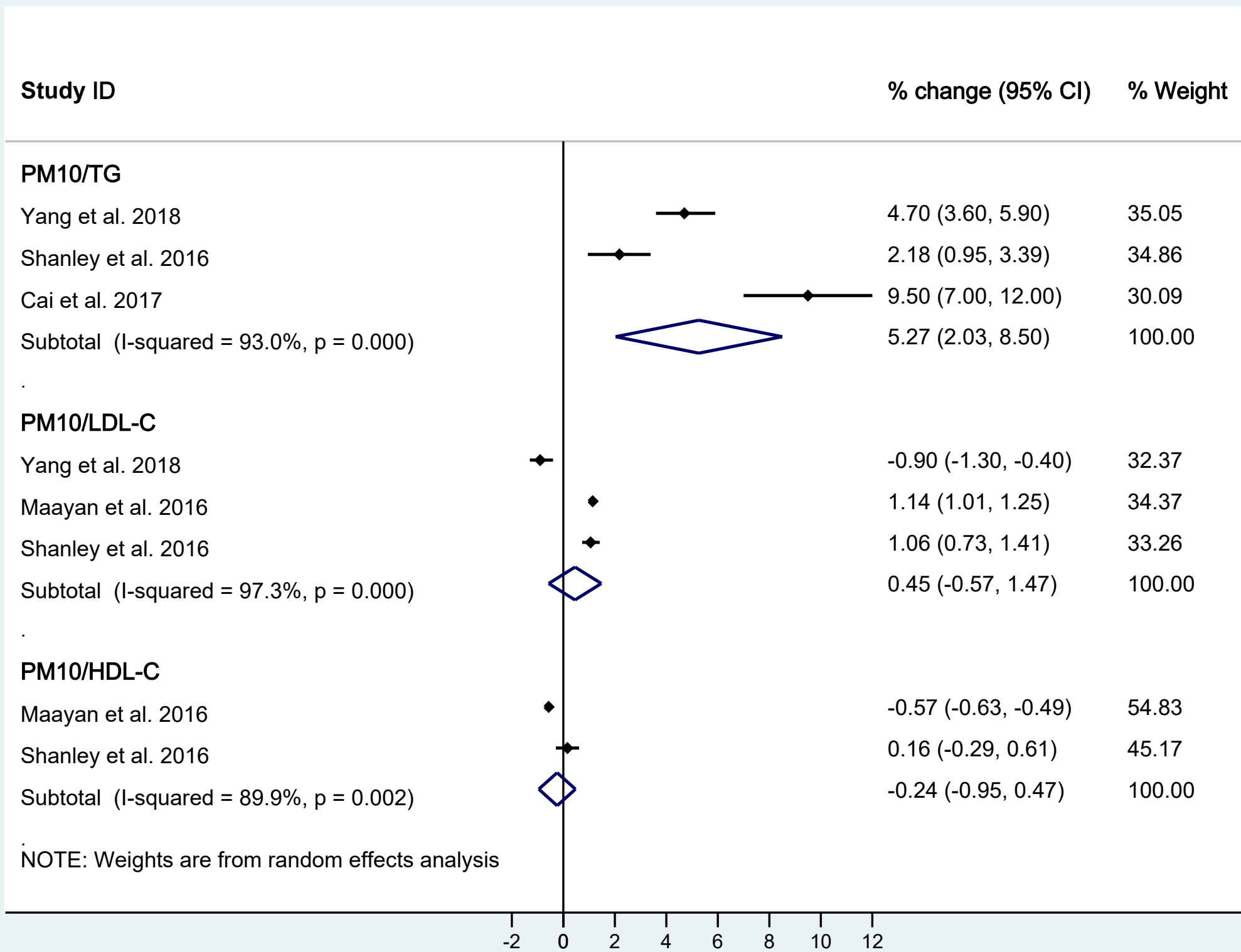


Figure 3

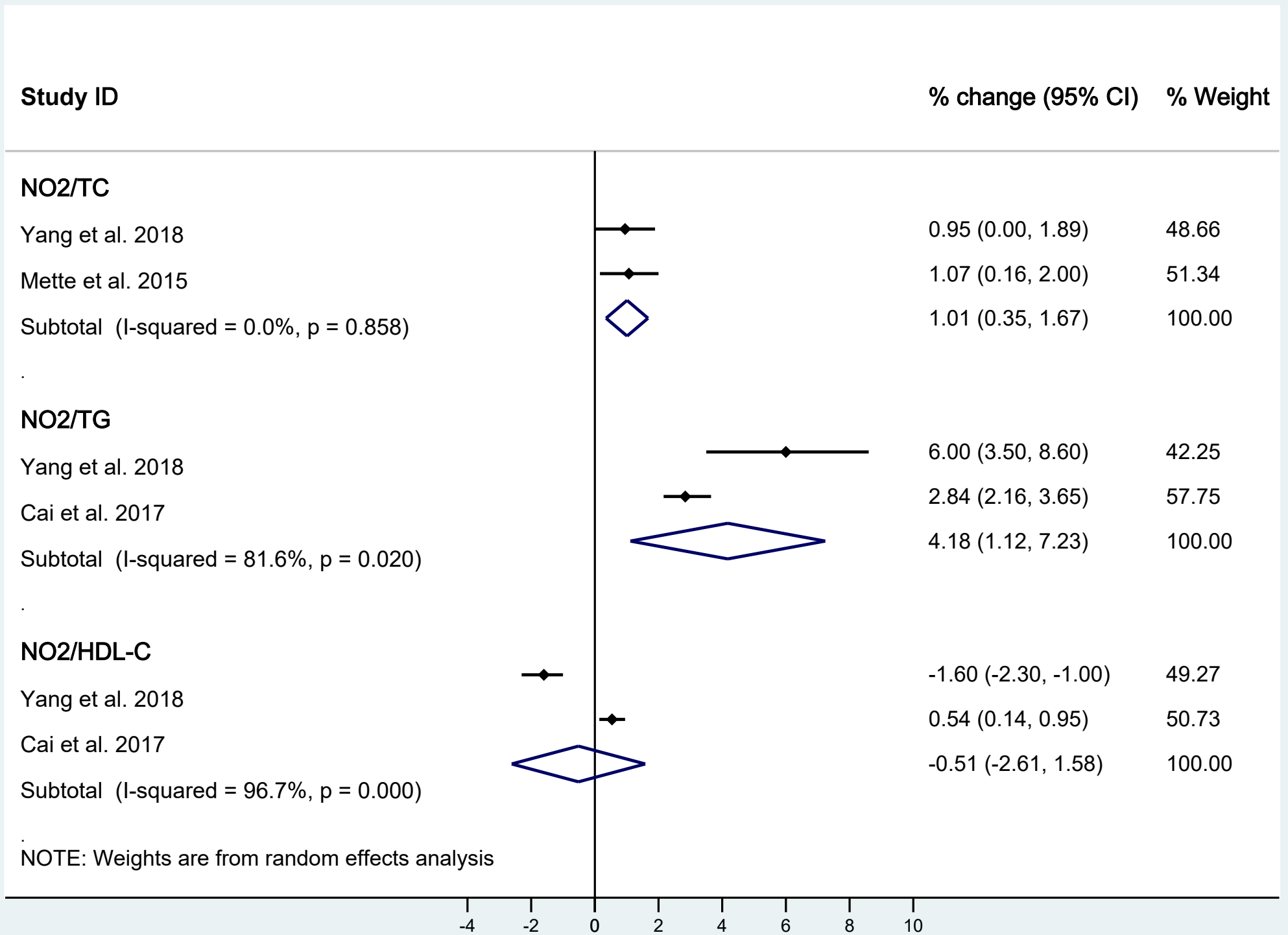


Figure 4

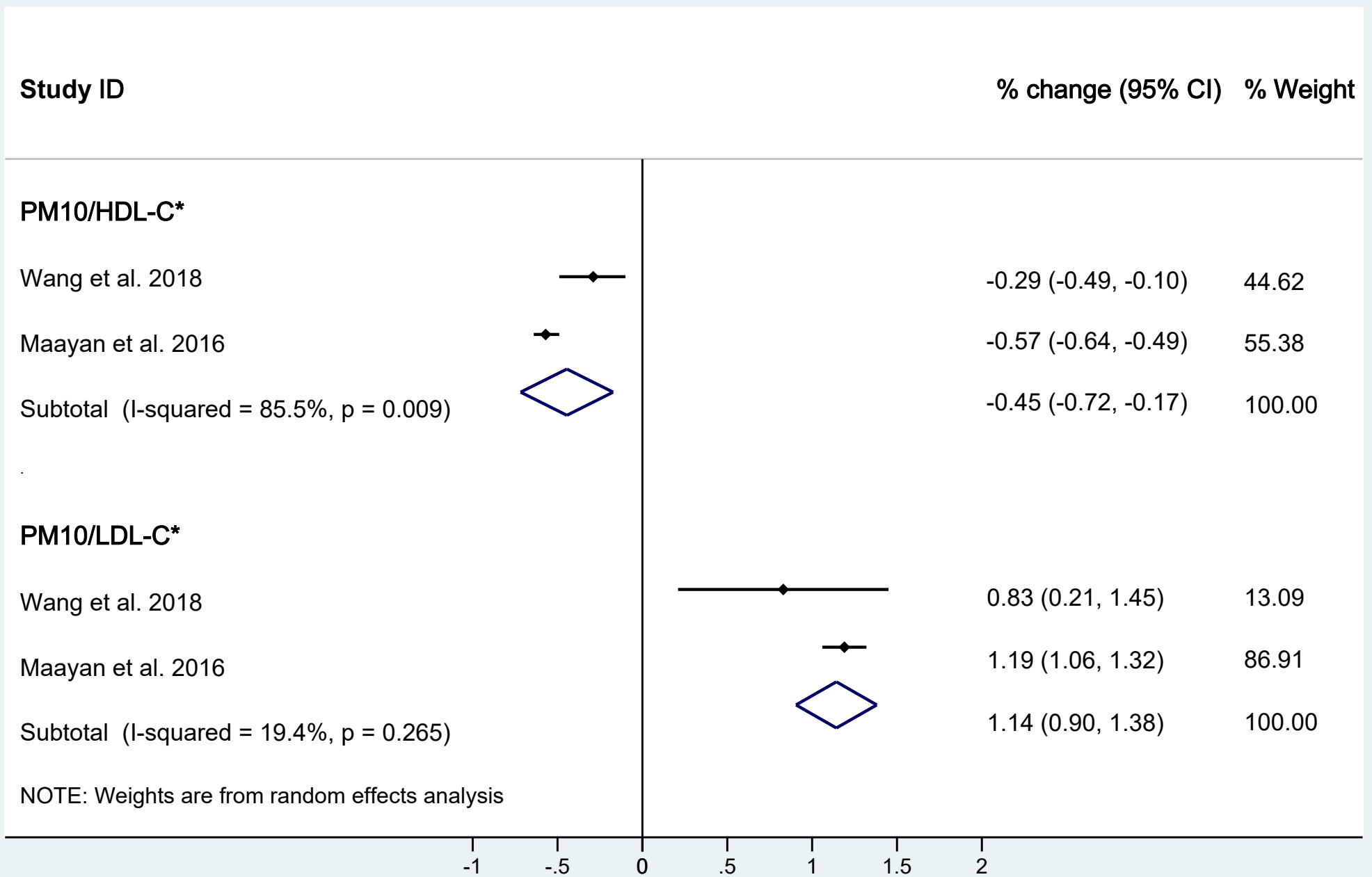


Figure 5