

1 Article

2 Risk interactions of coronavirus infection across age 3 groups after the peak of COVID-19 epidemic

4 Xinhua Yu ^{1*}

5 ¹ xyu2@memphis.edu

6

7 * Correspondence: xyu2@memphis.edu Tel.: (01) 901-678-3433. Division of Epidemiology, Biostatistics &
8 Environmental Health, School of Public Health, University of Memphis.

9 Received: date; Accepted: date; Published: date

10 **Abstract:** Background: the COVID-19 pandemic has incurred significant disease burden
11 worldwide, particularly on elderly population. This study aims to explore how risks of infection
12 interact across age groups using data from South Korea. Methods: Daily new COVID-19 cases
13 from March 10 to April 30, 2020 were scraped from online open sources. A multivariate vector
14 autoregressive model for time series count data was used to examine the risk interactions across
15 age groups. Case counts from previous days were included as predictors to dynamically examine
16 the change of risk patterns. Results: In South Korea, the risk of coronavirus infection among
17 elderly people was significantly affected by other age groups. An increase of virus infection
18 among people aged 20-39 was associated with a double risk of infection among elderly people.
19 Meanwhile, an increase in virus infection among elderly people was also significantly associated
20 with risks of infection among other age groups. The risks of infection among younger people were
21 relatively unaffected by that of other age groups. Conclusions: Protecting elderly people from
22 coronavirus infection could not only reduce the risk of infection among themselves but also
23 ameliorate the risks of virus infection among other age groups. Such interventions should be
24 effective and for long term.

25 **Keywords:** COVID-19; elderly people; risk interaction; South Korea; virus infection; SARS-CoV-2

26

27 1. Introduction

28 The coronavirus disease 2019 (COVID-19) is caused by the infection of a novel Severe Acute
29 Respiratory Syndrome associated coronavirus (SARS-CoV-2) [1]. Since December 2019, over 11
30 million people have been infected with SARS-CoV-2 and over 528,000 people died of coronavirus
31 infection (<https://coronavirus.jhu.edu/map.html>, accessed on July 4, 2020). Of them, elderly people
32 and people with underlying chronic conditions suffered the heaviest disease burden [2-4]. For
33 example, about 80% of deaths were people aged 65 or above
34 (<https://www.cdc.gov/coronavirus/2019-ncov/cases-updates/cases-in-us.html>), and 43.4% of
35 hospitalizations aged 65 or above [5]. In the state of Florida, US, people aged 65 or above accounted
36 for 54% of hospitalizations, and the mortality rate was 14% if infected with virus [6].

37 The reasons for the disproportional burden among elderly people were unclear [7]. Elderly
38 people generally have weaker immune system than younger people due to aging, and they are also
39 more likely to have multiple chronic conditions [8,9]. Thus, elderly people may have severe
40 symptoms if infected with coronavirus [10,11]. On the other hand, elderly people may have
41 exposed myriads of infections over their lifetime which may provide immunity against new virus
42 infection. Although cross-reaction of antibodies between SARS-CoV and SARS-CoV-2 was
43 observed, cross-neutralization was rare [12]. Thus, it was unlikely elderly people might have any
44 effective immunity against SARS-CoV-2.

45 Meanwhile, the COVID-19 pandemic is waning down in some countries such as South Korea
46 since March 10, 2020 (see Figure 1) [13,14], and society is gradually returning to normalcy [15]. A

47 potential rebound of new cases has been warned by many public health experts [16]. This is
48 reflected in an epidemic curve with a long tail and occasional spikes, which is demonstrated in the
49 epidemic process in South Korea (<https://www.kcdc.info/covid-19/>) [17,18]. In addition, if the
50 seasonality, immunity and cross-immunity of SARS-CoV-2 behave like previous coronaviruses, a
51 recent study predicted a long lasting and multi-wave epidemic was possible in the US [19].
52 Therefore, it is imperative to examine risk patterns of coronavirus infection among elderly people
53 after the peak of epidemic.

54 Unfortunately, due to lack of testing kits and heterogeneous diagnosis criteria, epidemiological
55 data on COVID-19 among different countries (and even within a country) were often
56 noncomparable [20]. One notable exception is South Korea where extensive contact tracing and
57 mass testing not only curtailed the epidemic but also generated high quality data. In South Korea,
58 both asymptomatic and symptomatic cases were identified promptly [17,18]. Thus, a complete
59 picture of the epidemic process was possible to depict.

60 In this study, we will examine how risks of coronavirus infection interact across age groups
61 using time series analysis. Using the high quality data from South Korea, we will focus on the post-
62 peak period of the epidemic process to evaluate the risk of infection among elderly people during
63 the period of society re-opening.
64

65 2. Materials and Methods

66 Daily new COVID-19 case counts from South Korea were obtained from the website
67 (<https://www.kaggle.com/kimjihoo/coronavirusdataset>) which were scraped from the Korea Center
68 for Disease Control website. The first COVID-19 case in South Korea appeared on Jan 20, 2020, and
69 the major epidemic started on Feb 19, 2020. Since the peak of first epidemic wave in South Korea
70 ended around March 10 [21] (also Figure 1), we limited the time series of new cases between March
71 10 to April 30, 2020 for South Korea. All daily cases were stratified by age groups (0-19, 20-39, 40-59,
72 and 60 or above). Those aged 60 or above were referred as elderly people.

73 The observed epidemic curves by age groups from March 10 to April 30, 2020 were plotted,
74 and the predicted daily cases were obtained with a generalized additive model (GAM) [22]
75 assuming daily new cases follow Poisson distributions. The smoothness of predicted values was
76 achieved with thin plate regression splines with 16 knots using R *mgcv* package (see Appendix A).

77 We developed a vector autoregressive (VAR) model to examine the associations of the
78 infection risks across age groups simultaneously [23]. Specifically, we assumed daily new case
79 counts ($y_{j,t}$) followed a generalized Poisson distribution to account for over-dispersion of case
80 counts (i.e., observed variance is larger than expected variance) [24]. The model also included case
81 counts from previous days (lags) across age groups as predictors to form a dynamic model (see
82 Appendix A for details). Therefore, the current risk of infection in each age group was predicted not
83 only by previous case counts in its own group but also by previous counts from other age groups.
84

$$y_{j,t} | \alpha_j, \beta_{j,k}, b_{j,t} \sim \text{generalized Poisson}(\mu_{j,t}, \xi_j)$$
$$\mu_{j,t} = \exp\left(\alpha_j + \sum_{j=1}^J \sum_{k=1}^K \beta_{j,k} \ln(y_{j,t-k}) + b_{j,t}\right)$$
$$b_{j,t} | \Sigma \sim \text{MultiNormal}(0, \Sigma)$$

85 Where $j = 1, \dots, J$ represented age groups, $t = 1, \dots, T$ represented days, and $k = 1, \dots, K$ represented
86 the number of time lags. Because the typical incubation period of COVID-19 is five days [25], we
87 reported results from five-lag models. Three-lag and seven lag models were also explored, and
88 results from all models were consistent (see online codes and results). The scale parameter ξ in the
89 generalized Poisson distribution controls the magnitude of dispersion, that is, $\xi = 0$ corresponding
90 to a standard Poisson (mean = variance), $\xi < 0$ suggesting under-dispersion (mean > variance), and 0
91 $< \xi < 1$ indicating overdispersion (mean < variance). The $b_{j,t}$ could be viewed as a random effect to

92 account for the correlation of daily counts between age groups. The $b_{i,t}$ was assumed a multivariate
93 normal distribution.

94 The above model framework was similar to the common log-linear relative risk models in
95 epidemiological studies which assume multiplicative associations between predictors and outcomes
96 [26]. The coefficients β s could be interpreted as natural logarithms of risk ratios per one unit change
97 of natural logarithms of case counts.

98 We fit the above models with Bayesian software stan through Rstan interface ([http://mc-](http://mc-stan.org)
99 [stan.org](http://mc-stan.org)) [27]. To keep the model simple, we assumed weakly informative priors of student t
100 distributions for all α s and β s, and an LKJ prior with modal density around diagonals for
101 correlations between case series (see Appendix A). Hamiltonian Monte Carlo was used to obtain
102 posterior distributions of parameters. Diagnostic plots showed all chains mixed satisfactorily and
103 were converged. In addition, negative binomial models were also fitted, and results were similar to
104 those reported here except for wider confidence intervals (Appendix B, Tables 1). Noticed that the
105 dispersion factors estimated from the generalized Poisson models were 2.66 (1.58 - 5.13), 1.44 (0.96 -
106 2.46), 2.21 (1.37 - 3.82), and 0.90 (0.59 - 1.50) for those aged 60 or above, 40-59, 20-39, and 0-19,
107 respectively. These estimates were of moderate magnitude and two of them (age group 40-59 and 0-
108 19) were not statistically different from 1. This also suggested that negative binomial models might
109 overestimate the dispersion factors which led to wider confidence intervals. The data, replicable
110 codes and other results were available online (www.github.com/xinhuayu/riskinteractions/).

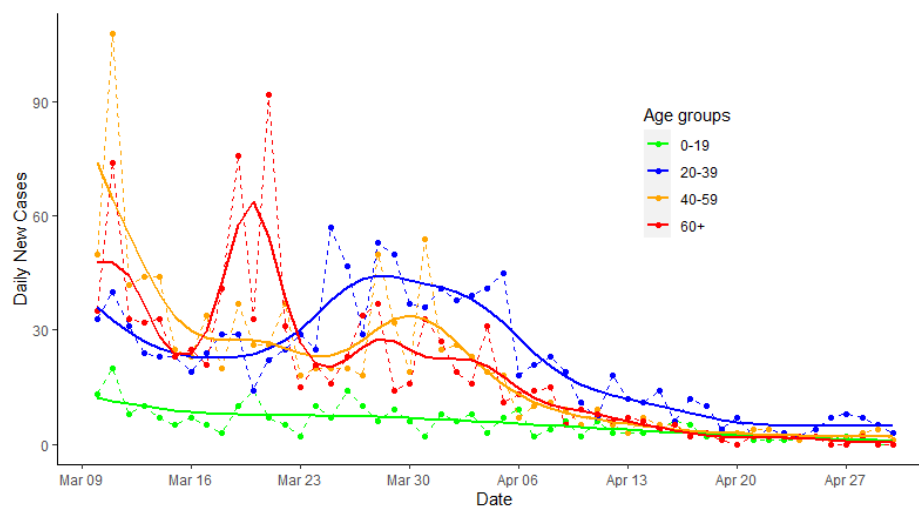
111 *Ethics statement:* This study was based on publicly available data. There was no direct
112 involvement of human subjects. Therefore, it was exempted from the approval of Institutional Review
113 Board. No informed consent was needed. All authors declared no conflict of interest in conducting
114 this study.

116 3. Results

117 In South Korea, there were 3,383 COVID-19 cases between March 10 and April 30, 2020. Of
118 them, 283 cases aged 0-19 (8.4%), 1,141 aged 20-39 (50.0%), 987 aged 40-59 (29.2%), and 972 aged 60
119 or above (28.7%).

120 Figure 1 presented the epidemic curves with fitted values by age groups for South Korea. After
121 March 10, there was a small pike among those aged 60 or above around March 20,2020, and a small
122 rebound among those aged 20-39 (e.g., around March 30 to April 5, 2020), followed by those aged
123 40-59 and aged 60 or older.

124



125
126
127
128

Figure 1. Epidemic curve of COVID-19 in South Korea from March 10 to April 30, 2020, by age groups

129
130

Table 1: Risk interactions in coronavirus infection across age groups during the COVID-19 pandemic, South Korea, March 10 to April 30, 2020

Model Outcomes	Predictors	Lags of predictors				
		Lag 1	Lag 2	Lag 3	Lag 4	Lag 5
Aged 60 or above						
	60 or above	2.09 (1.28 - 3.17) *	1.21 (0.78 - 1.80)	0.90 (0.60 - 1.39)	1.03 (0.60 - 1.67)	0.96 (0.63 - 1.53)
	40 - 59	0.95 (0.49 - 1.84)	1.81 (0.98 - 3.29)	0.59 (0.30 - 1.18)	1.37 (0.85 - 2.23)	1.03 (0.61 - 1.70)
	20 - 39	0.89 (0.53 - 1.46)	2.02 (1.12 - 3.47) *	1.28 (0.72 - 2.31)	0.41 (0.22 - 0.78) #	1.11 (0.58 - 2.22)
	0 - 19	0.90 (0.61 - 1.43)	1.36 (0.95 - 1.95)	0.82 (0.57 - 1.19)	0.61 (0.44 - 0.85)	1.64 (1.03 - 2.58) *
Aged 40 - 59						
	60 or above	1.66 (1.19 - 2.29) *	0.79 (0.55 - 1.12)	0.89 (0.64 - 1.23)	0.98 (0.70 - 1.40)	1.02 (0.71 - 1.40)
	40 - 59	1.01 (0.62 - 1.63)	1.76 (1.16 - 2.66) *	1.23 (0.76 - 1.96)	0.89 (0.62 - 1.29)	0.88 (0.62 - 1.28)
	20 - 39	1.13 (0.75 - 1.73)	1.12 (0.76 - 1.67)	1.59 (1.03 - 2.50) *	0.60 (0.37 - 0.95)	0.88 (0.53 - 1.48)
	0 - 19	1.04 (0.79 - 1.37)	1.28 (0.97 - 1.68)	1.17 (0.88 - 1.57)	1.14 (0.88 - 1.49)	1.17 (0.84 - 1.62)
Aged 20 - 39						
	60 or above	0.95 (0.69 - 1.29)	0.89 (0.65 - 1.23)	1.01 (0.72 - 1.39)	1.54 (1.11 - 2.12) *	0.97 (0.69 - 1.31)
	40 - 59	1.17 (0.73 - 1.88)	1.18 (0.78 - 1.78)	0.98 (0.60 - 1.52)	0.90 (0.64 - 1.26)	1.04 (0.75 - 1.47)
	20 - 39	1.56 (1.05 - 2.36) *	1.02 (0.68 - 1.55)	1.45 (0.96 - 2.24)	1.06 (0.68 - 1.64)	0.85 (0.55 - 1.32)
	0 - 19	1.04 (0.79 - 1.37)	0.96 (0.75 - 1.27)	0.88 (0.66 - 1.20)	0.97 (0.75 - 1.26)	0.74 (0.54 - 1.00)
Aged 0 - 19						
	60 or above	1.78 (1.23 - 2.61) *	1.34 (0.86 - 2.06)	0.99 (0.67 - 1.51)	0.82 (0.52 - 1.25)	1.55 (1.02 - 2.30) *
	40 - 59	0.76 (0.41 - 1.38)	0.71 (0.42 - 1.18)	0.85 (0.47 - 1.56)	0.91 (0.55 - 1.57)	0.97 (0.62 - 1.54)
	20 - 39	1.51 (0.92 - 2.55)	1.50 (0.85 - 2.57)	1.04 (0.61 - 1.80)	0.78 (0.44 - 1.38)	0.91 (0.51 - 1.62)
	0 - 19	0.93 (0.64 - 1.36)	0.85 (0.60 - 1.21)	0.85 (0.60 - 1.27)	0.92 (0.62 - 1.38)	1.51 (0.99 - 2.31)

Note: * and # for p < 0.05

131
132

133 Table 1 described associations of risks of infection across age groups in South Korea. In
134 addition to tracking effect from the first lag day (yesterday) among elderly people, the current risk
135 of infection among elderly people was associated with double risk by one unit increase of infection
136 risk among those aged 20-39 in the second lag day. Additionally, an increase of infection in the
137 youngest population during the fifth lag days was also associated with an increased risk of
138 infection among elderly people by 64%.

139 More importantly, an increase of virus infection among elderly people was associated with
140 increases in risks of infection among all other age groups, but with longer delays in younger
141 populations. Furthermore, the risk of infection among people aged 40-59 was affected by both old
142 and young people, but to a less extent. Risks of infection among people aged 20-39 or 0-19 were less
143 likely affected by other age groups.
144

145 4. Discussion

146 This was the first study to quantify risk interactions of SARS-CoV-2 infection across age
147 groups based on vector autoregressive models using epidemic data of high quality from South
148 Korea. We found that in South Korea, the risk of infection among elderly people was significantly
149 affected by other age groups. An increase in virus infection among elderly people was also
150 significantly associated with increased risks of infection among other age groups. Risks of infections
151 among younger people were relatively unaffected by that of other age groups.

152 Our results were consistent with the current COVID-19 epidemic process, in which risk of
153 infections among elderly people might be affected by other age groups [28]. Although virus
154 transmission might differ among age groups [7,29], the risk interactions were likely due to personal
155 interactions between people of different age groups. Respiratory infectious diseases often spread
156 through personal contacts [30]. Previous studies showed that contacts were more frequent in young
157 age groups than older age groups, and interactions across age groups were less frequent than
158 within each age group [31]. During the emerging pandemic like COVID-19, stringent control
159 measures such as lock-down, strict social distancing and stay-at-home rules, were often
160 implemented promptly, leading to a significantly abrupt change of contact patterns within and
161 between age groups. Modern techniques such as contact tracing app, infection risk ID, and instant
162 notification of cases, also allowed us to efficiently isolate cases and quarantine high risk people. The
163 observed risk interactions between age groups in South Korea might be largely due to the change of
164 contact patterns during the epidemic period. As shown in our study, there were 2-5 lagging days in
165 the risk interactions across age groups, especial between old and young people. On the other hand,
166 the infection among elderly people may still be affected by and also affect the risks of infection
167 among other age groups. Passive community interactions such as grocery shopping might play an
168 important role in sustaining the epidemic.

169 Our results highlighted the importance of implementing and enforcing effective interventions
170 in the whole society [32-34], and the highest priority of protecting elderly people [29]. Furthermore,
171 we showed that an increase of coronavirus infection among elderly people was associated with
172 increased risks of infection among other age groups, suggesting protecting elderly people and
173 reducing the risk of infection among elderly people had spillover effect in the whole society. This
174 was consistent with our previous simulation study in which reducing contacts among elderly could
175 reduce the virus infection and hospitalizations in the whole society [35].

176 There were some limitations in this study. The most important one was that we relied on
177 reported cases. The data from South Korea were more likely complete due to extensive contact
178 tracing and mass testing. Furthermore, the case reporting date (or virus infection detection/lab
179 confirmation date) was different from the virus infection date, and the average incubation period
180 for SARS-CoV-2 was about 5 days [25]. The laudable efforts of extensive contact tracing and mass
181 testing implemented by the South Korea government at the beginning of COVID-19 epidemic
182 significantly reduced the reporting delays, and likely identified many cases before symptom onsets
183 [17]. Therefore, the interval between virus infection and case reporting might be small. In addition,

184 there were other factors such as gender, socio-economic status and neighborhood environment
185 might also affect the risk of infection.

186 Moreover, although we interpreted the results with action terms, they had no explicit causative
187 meanings. For example, younger people tended to have milder or no symptoms (i.e., subclinical
188 cases) if infected with virus [36-38]. Thus, it was possible that an increased number of detected cases
189 among young people implied the existence of an increase in subclinical cases in the community
190 who might unknowingly infect other people, including elderly people. Subclinical cases could only
191 be identified through extensive contact tracing and mass testing. Without this information, it is
192 impossible to examine the route of infections in the community.

193 Our study has several strengths. Firstly, data from South Korea were more likely complete
194 which would provide information about underlying epidemic mechanisms. Although different
195 social norms and health care systems might explain some differences in risk patterns between South
196 Korea and other regions, results from South Korea provided a baseline picture of risk interactions
197 among age groups under a well-controlled, ideal epidemic process. Different patterns might be due
198 to differences in population structures, magnitudes of control measures and contact patterns in the
199 society, while similar patterns in risk interactions between regions allowed us to infer the possible
200 paths of infections.

201 Secondly, we proposed a novel multivariate autoregressive model for time series of counts to
202 examine the risk of virus infection across age groups simultaneously. A flexible generalized Poisson
203 model fitted with Bayesian methods was used to account for overdispersion of count data [24].
204 Unlike many other studies that used mechanistic epidemic models which was useful to describe the
205 epidemic process [39], our statistical models extended traditional relative risk models to time series
206 of count data. It should be note that this type of model likely overfit the data and collinearity
207 among lag variables also exist. Thus, having *a priori* hypotheses and choosing biologically relevant
208 lags are critical in building correct models and interpreting the results. Our lag models were based
209 on observed incubation period of COVID-19 and for testing pre-specific hypotheses. The principle
210 of our methods was similar to that of Institute for Health Metrics and Evaluation (IHME) [40] and
211 University of Texas-Austin models [41], all of which relied on time series analysis of count data.
212 However, we did not attempt to predict future cases. Rather, we focused on disentangling risk
213 interactions of infection across age groups, which was more important and relevant in disease
214 preventions.

215 Finally, during the process of re-opening the economy and society, the number of new cases
216 may rebound, multiple small waves or a second big wave of epidemic are possible. A contentious
217 issue was whether and how to protect high risk populations such as elderly people during the
218 return of epidemic. Therefore, we limited our study period to the post-peak of epidemic to answer
219 this imminent question. Our study strongly supported that high risk populations such as elderly
220 people should still take serious precautions during the post-epidemic period.
221

222 5. Conclusions

223 In summary, protecting elderly people from coronavirus infection might not only be associated
224 with a reduced risk of infection among themselves but also related to lower risks of virus infection
225 among other age groups. Therefore, elderly people should keep on practicing social distancing and
226 maintaining effective personal protections until the pandemic is completely over.

227 6. Patents

228 N/A

229 **Supplementary Materials:** N/A

230 **Author Contributions:** Dr. Xinhua Yu has full access to research data and conducted data analysis and report
231 writing.

232 **Funding:** This research was funded by seed grant for data science from FedEx Institute of Technology at the
233 University of Memphis.

234 **Conflicts of Interest:** The authors declare no conflict of interest.

235

236 **Abbreviations:**

237 The following abbreviations are used in this manuscript:

238 SARS-CoV-2: severe acute respiratory syndrome coronavirus 2

239 COVID-19: coronavirus infectious disease 2019

240 GAM: generalized additive model

241 VAR: vector autoregressive regression

242 NB: negative binomial model

243 REML: restricted maximum likelihood

244 PMF: probability mass function

245

246 **Appendix A:**

247 **I. Obtained Smoothed predicted daily cases with Generalized Additive Model (GAM)**

248 Assuming daily new cases follow a Poisson distribution or negative binomial (NB) distribution
249 (see below), the GAM is a linear regression with smoothed time term. For simplicity, a separate
250 GAM regression was fitted for each age group:

$$\log_e(E(Y_{ij})) = \beta_0 + \sum_{k=1}^K \beta_{j,k} \cdot b_k(\text{time}_i)$$

251 where Y_{ij} represents the observed case counts of day i and group j , and $E(Y_{ij})$ is expected
252 (predicted) value. The variable time_i represents day $(1, \dots, I)$, $b_k(\cdot)$ represents a basis function for the
253 k th term to smooth temporal trend, and $\beta_{j,k}$ are regression coefficients for smooth term k and group
254 j . Restricted maximum likelihood (REML) approach was used in parameter estimation. R *mgcv*
255 package was used [22], and smooth terms were fitted using thin plate regression spline with 16
256 knots.

257 **II. Model setups and comparisons**

258 The standard Poisson distribution describes the distribution of y events occurring at a constant
259 rate of λ . The Probability mass function (PMF) is:

$$p(Y = y|\lambda) = \frac{\lambda^y}{y!} e^{-\lambda}, \quad \lambda > 0$$

$$E(Y) \stackrel{\text{def}}{=} \mu = \lambda = \text{Var}(Y)$$

$$\text{Loglik} = y \log(\lambda) - \lambda - \log(y!)$$

260 In standard Poisson distribution, expected variance equals mean. If observed variance is larger
261 than expected variance (i.e., the mean), then overdispersion exists. This often occurs when
262 outcomes are correlated, such as daily new case counts during a disease outbreak.

263 The generalized Poisson distribution introduces an additional scale parameter ξ [42] as quoted
264 in Hilbe JM. 2014 [26]. The PMF is:

$$p(Y = y|\lambda, \xi) = \frac{\lambda}{y!} (\lambda + \xi y)^{y-1} e^{-(\lambda + \xi y)}, \quad \lambda > 0$$

$$E(Y) \stackrel{\text{def}}{=} \mu = \frac{\lambda}{1 - \xi}$$

$$\text{Var}(Y) = \frac{\lambda}{(1 - \xi)^3} = \frac{\mu}{(1 - \xi)^2}$$

265 Thus, $\phi \stackrel{\text{def}}{=} \frac{1}{(1 - \xi)^2}$ is the dispersion factor indicating how variance changes with the mean.
266 Therefore, if $\xi = 0$, then $\phi = 1$, corresponds to a standard Poisson (mean = variance); $0 < \xi < 1$, then ϕ

267 >1, models overdispersion (mean < variance); and $\xi < 0$, then $\phi < 1$, models under-dispersion (mean
 268 > variance).

269 Reparametrize the PMF of generalized Poisson distribution with μ and ξ [24]:

$$p(Y = y|\mu, \xi) = \frac{\mu(1 - \xi)^y}{y!} (\mu - \xi(\mu - y))^{y-1} e^{-(\mu - \xi(\mu - y))}$$

$$\text{LogLik} = \log(\mu(1 - \xi)) + (y - 1)\log(\mu - \xi(\mu - y)) - (\mu - \xi(\mu - y)) - \log(y!)$$

270 On the other hand, the negative binomial distribution describes the distribution of the number
 271 of successes given a predefined r number of failures during a sequence of independent Bernoulli
 272 trials with a success probability p :

$$p(Y = y) = \binom{y + r - 1}{y} p^y (1 - p)^r$$

$$E(Y) \stackrel{\text{def}}{=} \mu = \frac{rp}{1 - p}$$

$$\text{Var}(Y) = \frac{rp}{(1 - p)^2} = \frac{\mu}{1 - p} = \mu + \frac{\mu^2}{r}$$

273 Thus, the overdispersion of Y is controlled by the shape parameter r .

274 Reparametrize the PMF with μ and r ,

$$p(Y = y) = \binom{y + r - 1}{y} \left(\frac{\mu}{\mu + r}\right)^y \left(\frac{r}{\mu + r}\right)^r$$

$$\text{Loglik} = yr(\log(\mu r) - 2\log(\mu + r)) + \log(\Gamma(y + r)) - \log(\Gamma(y + 1)) - \log(\Gamma(r))$$

275 Where gamma function $\Gamma(x+1) = x!$ (x factorial) for an integer x , and the parameter r can be any
 276 positive real value.

277 Note that negative binomial distribution can be viewed as a Gamma-Poisson mixture
 278 distribution in which $Y \sim \text{Poisson}(\lambda)$ and $\lambda \sim \text{Gamma}(r, \lambda/r)$. That is, the negative binomial
 279 distribution (r, p) is the posterior distribution of $\text{Poisson}(\lambda)$ with $\text{Gamma}(r, \lambda/r)$ as the conjugate
 280 prior of λ , where $\lambda \stackrel{\text{def}}{=} \mu = rp/(1 - p)$. Rewriting $\text{Gamma}(r, \lambda/r)$ as $\text{Gamma}(r, p/(1 - p))$ and using Γ
 281 functions to represent factorials:

$$\int_0^\infty \frac{\lambda^y e^{-\lambda}}{\Gamma(y + 1)} \cdot \frac{\lambda^{r-1} e^{-\lambda(\frac{1-p}{p})}}{\left(\frac{p}{1-p}\right)^r \Gamma(r)} d\lambda = \frac{\Gamma(r + y)}{\Gamma(r)\Gamma(y + 1)} p^y (1 - p)^r$$

282 Under this framework, negative binomial distribution is appealing as a natural extension of
 283 Poisson distribution to allow for overdispersion that is controlled by the shape parameter r .

284 However, although negative binomial distribution is often used to model new case counts
 285 during disease outbreaks, it models only overdispersion and assumes a quadratic relationship
 286 between variance and mean, while the generalized Poisson model is more flexible and assumes a
 287 simpler first order association between variance and mean. Therefore, we chose to report results
 288 from generalized Poisson models. Results from negative binomial models were included in the
 289 appendix. In addition, it is also of note that there are extensions of negative binomial models in
 290 which the association between mean and variance can be estimated from data, leading to a more
 291 flexible model and also permitting the exploration of determinants of overdispersion [26].

292 In this study, we proposed the following hierarchical vector autoregressive model (VAR) for
 293 count data:

$$y_{j,t} | \alpha_j, \beta_{j,k}, b_{j,t} \sim \text{PMF}(\mu_{j,t})$$

$$\mu_{j,t} = \exp\left(\alpha_j + \sum_{j=1}^J \sum_{k=1}^K \beta_{j,k} \ln(y_{j,t-k}) + b_{j,t}\right)$$

$$b_{j,t} | \Sigma \sim \text{MultiNormal}(0, \Sigma)$$

294 Where $j = 1, \dots, J$ represents age groups, $t = 1, \dots, T$ represents days, and $k = 1, \dots, K$ represents the
 295 number of lags. The PMF of Y can be either standard Poisson (λ), generalized Poisson (μ, ξ), or
 296 negative binomial (μ, r) distribution.

297 The above VAR model included new case counts from previous days (lags) across age groups
 298 as predictors[23], thus examining associations of the infection risks across age groups

299 simultaneously. That is, the current risk of infection in each age group was predicted not only by
300 previous case counts in its own group but also by previous counts from other age groups.

301 The correlation of daily counts between age groups was modeled through $b_{j,t}$ that can be
302 viewed as a random effect. The $b_{j,t}$ was assumed a multivariate normal distribution.

303 The exponential link between dynamic predictors and μ is equivalent to common relative risk
304 models in epidemiological studies, i.e., log-linear models for count data. Under this multiplicative
305 scale framework, the interpretation of β s are relative risks given one unit increase of predictors.

306 During the model fitting, we assumed some weakly informative priors for all parameters:

$$\alpha_j \sim t(df = 5, location = 0, scale = 2.5)$$

$$\beta_{j,k} \sim t(df = 5, location = 0, scale = 2.5)$$

$$\xi_j \sim normal(0, 0.3), \text{ and } -0.9 \leq \xi_j \leq 0.9$$

$$\frac{1}{\sqrt{r}} \stackrel{\text{def}}{=} \varphi \sim \text{positive half-normal}(0, 1)$$

$$\Sigma = D'RD,$$

$$\text{where standard deviation } D = \text{diag}(sd_j), sd_j \sim \text{cauchy}(0, 5)$$

$$\text{and } R = \text{correlation matrix}, R \sim \text{LKJ}(2)$$

307 The LKJ prior is a special prior most suitable for correlations. The LKJ(2) assumes a modal density
308 surrounding diagonals.

309 The models were fit with Bayesian software stan through Rstan interface [27]. A customized
310 stan function was constructed for fitting generalized Poisson model. We employed Hamiltonian
311 Monte Carlo with 5 Markov chains, each with 50,000 iterations plus 2000 warmups, to obtain
312 posterior distributions of parameters. Diagnostic plots through shinestan package showed all
313 chains mixed well and were converged. The replicable data and codes, including models with daily
314 case counts as standard Poisson, generalized Poisson or negative binomial distributions, were
315 available online (www.github.com/xinhuayu/riskinteractions/).

316

317 Appendix B: Additional tables

318 Table 1: Risk interactions in coronavirus infection across age groups based on negative binomial models, COVID-19, South Korea

Model		Lags of predictors					319
Outcomes	Predictors	Lag 1	Lag 2	Lag 3	Lag 4	Lag 5	320
Aged 60 or above							321
	60 or above	1.93 (1.14 - 3.19) *	1.09 (0.66 - 1.80)	1.02 (0.61 - 1.82)	0.99 (0.57 - 1.67)	1.11 (0.68 - 1.87)	322
	40 - 59	1.03 (0.53 - 2.02)	1.66 (0.83 - 3.01)	0.69 (0.36 - 1.46)	1.26 (0.72 - 2.25)	1.00 (0.57 - 1.71)	323
	20 - 39	0.94 (0.54 - 1.69)	1.30 (0.66 - 2.42)	1.42 (0.73 - 2.68)	0.50 (0.25 - 1.01)	1.21 (0.63 - 2.37)	324
	0 - 19	1.10 (0.72 - 1.78)	1.29 (0.79 - 1.98)	0.85 (0.51 - 1.35)	0.62 (0.40 - 0.98) #	1.52 (0.88 - 2.55)	325
Aged 40 - 59							326
	60 or above	1.64 (1.12 - 2.41) *	0.75 (0.50 - 1.09)	0.97 (0.67 - 1.49)	1.01 (0.69 - 1.53)	1.02 (0.69 - 1.52)	327
	40 - 59	1.15 (0.68 - 1.96)	1.55 (0.92 - 2.46)	1.14 (0.64 - 2.24)	0.90 (0.54 - 1.39)	0.95 (0.63 - 1.47)	328
	20 - 39	1.10 (0.59 - 1.73)	1.13 (0.70 - 1.81)	1.54 (0.95 - 2.47)	0.63 (0.37 - 1.27)	0.89 (0.44 - 1.56)	329
	0 - 19	1.09 (0.77 - 1.53)	1.23 (0.87 - 1.78)	1.16 (0.82 - 1.64)	1.16 (0.82 - 1.60)	1.15 (0.79 - 1.68)	330
Aged 20 - 39							331
	60 or above	1.00 (0.71 - 1.44)	0.93 (0.65 - 1.39)	1.00 (0.69 - 1.48)	1.58 (1.10 - 2.26) *	0.90 (0.64 - 1.29)	332
	40 - 59	1.12 (0.69 - 1.86)	1.09 (0.67 - 1.72)	0.96 (0.58 - 1.53)	0.97 (0.65 - 1.44)	1.08 (0.72 - 1.61)	333
	20 - 39	1.63 (1.09 - 2.48) *	1.04 (0.66 - 1.64)	1.35 (0.86 - 2.11)	0.99 (0.58 - 1.56)	0.96 (0.60 - 1.53)	334
	0 - 19	1.04 (0.74 - 1.44)	0.95 (0.69 - 1.29)	0.89 (0.63 - 1.23)	0.95 (0.67 - 1.40)	0.73 (0.51 - 1.04)	335
Aged 0 - 19							336
	60 or above	1.77 (1.17 - 2.76) *	1.35 (0.82 - 2.14)	1.00 (0.62 - 1.61)	0.81 (0.50 - 1.32)	1.52 (0.97 - 2.44)	337
	40 - 59	0.76 (0.39 - 1.42)	0.71 (0.39 - 1.27)	0.86 (0.43 - 1.64)	0.94 (0.53 - 1.66)	0.96 (0.58 - 1.60)	338
	20 - 39	1.53 (0.87 - 2.72)	1.46 (0.82 - 2.69)	1.05 (0.57 - 1.92)	0.78 (0.41 - 1.41)	0.90 (0.49 - 1.74)	339
	0 - 19	0.94 (0.63 - 1.44)	0.83 (0.57 - 1.25)	0.88 (0.58 - 1.33)	0.92 (0.59 - 1.44)	1.52 (0.95 - 2.42) #	340

Note: * and # for p
0.05

340 <

341

342 **References**

- 343 1. Zhu, N.; Zhang, D.; Wang, W.; Li, X.; Yang, B.; Song, J.; Zhao, X.; Huang, B.; Shi, W.; Lu, R.,
344 et al. A Novel Coronavirus from Patients with Pneumonia in China, 2019. *N Engl J Med* **2020**,
345 *382*, 727-733, doi:10.1056/NEJMoa2001017.
- 346 2. Guan, W.J.; Ni, Z.Y.; Hu, Y.; Liang, W.H.; Ou, C.Q.; He, J.X.; Liu, L.; Shan, H.; Lei, C.L.; Hui,
347 D.S.C., et al. Clinical Characteristics of Coronavirus Disease 2019 in China. *N Engl J Med*
348 **2020**, 10.1056/NEJMoa2002032, doi:10.1056/NEJMoa2002032.
- 349 3. Richardson, S.; Hirsch, J.S.; Narasimhan, M.; Crawford, J.M.; McGinn, T.; Davidson, K.W.;
350 and the Northwell, C.-R.C.; Barnaby, D.P.; Becker, L.B.; Chelico, J.D., et al. Presenting
351 Characteristics, Comorbidities, and Outcomes Among 5700 Patients Hospitalized With
352 COVID-19 in the New York City Area. *JAMA* **2020**, 10.1001/jama.2020.6775,
353 doi:10.1001/jama.2020.6775.
- 354 4. Wu, Z.; McGoogan, J.M. Characteristics of and Important Lessons From the Coronavirus
355 Disease 2019 (COVID-19) Outbreak in China: Summary of a Report of 72314 Cases From the
356 Chinese Center for Disease Control and Prevention. *JAMA* **2020**, 10.1001/jama.2020.2648,
357 doi:10.1001/jama.2020.2648.
- 358 5. Garg, S.; Kim, L.; Whitaker, M.; O'Halloran, A.; Cummings, C.; Holstein, R.; Prill, M.; Chai,
359 S.J.; Kirley, P.D.; Alden, N.B., et al. Hospitalization Rates and Characteristics of Patients
360 Hospitalized with Laboratory-Confirmed Coronavirus Disease 2019 - COVID-NET, 14
361 States, March 1-30, 2020. *MMWR Morb Mortal Wkly Rep* **2020**, *69*, 458-464,
362 doi:10.15585/mmwr.mm6915e3.
- 363 6. Yu, X. Urban-rural inequalities during the COVID-19 pandemic among elderly people in
364 Florida, US. *medRxiv* **2020**, 10.1101/2020.05.01.20087791, 2020.2005.2001.20087791,
365 doi:10.1101/2020.05.01.20087791.
- 366 7. Hay, J.A.; Haw, D.J.; Hanage, W.P.; Metcalf, C.J.E.; Mina, M.J. Implications of the Age
367 Profile of the Novel Coronavirus *PNAS* **2020**.
- 368 8. Chavan, P.; Kedia, S.; Yu, X. Physical and Functional Limitations in US Older Cancer
369 Survivors, *J of Palliative Care & Medicine*, 2017. **2017**, 10.4172/2165-7386.1000312,
370 doi:10.4172/2165-7386.1000312.
- 371 9. Ward, B.W.; Schiller, J.S.; Goodman, R.A. Multiple chronic conditions among US adults: a
372 2012 update. *Prev Chronic Dis* **2014**, *11*, E62, doi:10.5888/pcd11.130389.
- 373 10. CDC. Severe Outcomes Among Patients with Coronavirus Disease 2019 (COVID-19) —
374 United States, February 12–March 16, 2020. *MMWR Morb Mortal Wkly Rep* **2020**, 343-346.
- 375 11. Imai, N.; Cori, A.; Dorigatti, I.; Baguelin, M.; Donnelly, C.A.; Riley, S.; Ferguson, N.M.
376 *Report 3: Transmissibility of 2019-nCoV* Imperial College of London: London, OK, 2020.
- 377 12. Lv, H.; Wu, N.C.; Tsang, O.T.-Y.; Yuan, M.; Perera, R.A.P.M.; Leung, W.S.; So, R.T.Y.; Chan,
378 J.M.C.; Yip, G.K.; Chik, T.S.H., et al. Cross-reactive Antibody Response between SARS-CoV-
379 2 and SARS-CoV Infections. *Cell Reports* **2020**, *31*, 107725,
380 doi:<https://doi.org/10.1016/j.celrep.2020.107725>.
- 381 13. Kim, S.; Castro, M.C. Spatiotemporal pattern of COVID-19 and government response in
382 South Korea (as of May 31, 2020). *International Journal of Infectious Diseases* **2020**,
383 <https://doi.org/10.1016/j.ijid.2020.07.004>, doi:<https://doi.org/10.1016/j.ijid.2020.07.004>.

- 384 14. Yu, X.; Duan, J.; Jiang, Y.; Zhang, H. Distinctive trajectories of COVID-19 epidemic by age
385 and gender: a retrospective modeling of the epidemic in South Korea. *International Journal of*
386 *Infectious Diseases* **2020**, <https://doi.org/10.1016/j.ijid.2020.06.101>,
387 doi:<https://doi.org/10.1016/j.ijid.2020.06.101>.
- 388 15. Anderson, R.M.; Heesterbeek, H.; Klinkenberg, D.; Hollingsworth, T.D. How will country-
389 based mitigation measures influence the course of the COVID-19 epidemic? *Lancet* **2020**, *395*,
390 931-934, doi:10.1016/S0140-6736(20)30567-5.
- 391 16. Chowell, G.; Mizumoto, K. The COVID-19 pandemic in the USA: what might we expect?
392 *Lancet* **2020**, *395*, 1093-1094, doi:10.1016/S0140-6736(20)30743-1.
- 393 17. Shim, E.; Tariq, A.; Choi, W.; Lee, Y.; Chowell, G. Transmission potential and severity of
394 COVID-19 in South Korea. *Int J Infect Dis* **2020**, *93*, 339-344, doi:10.1016/j.ijid.2020.03.031.
- 395 18. Park, S.Y.; Kim, Y.M.; Yi, S.; Lee, S.; Na, B.J.; Kim, C.B.; Kim, J.I.; Kim, H.S.; Kim, Y.B.; Park,
396 Y., et al. Coronavirus Disease Outbreak in Call Center, South Korea. *Emerg Infect Dis* **2020**,
397 *26*, doi:10.3201/eid2608.201274.
- 398 19. Kissler, S.M.; Tedijanto, C.; Goldstein, E.; Grad, Y.H.; Lipsitch, M. Projecting the
399 transmission dynamics of SARS-CoV-2 through the postpandemic period. *Science* **2020**,
400 10.1126/science.abb5793, doi:10.1126/science.abb5793.
- 401 20. Lipsitch, M.; Swerdlow, D.L.; Finelli, L. Defining the Epidemiology of Covid-19 - Studies
402 Needed. *N Engl J Med* **2020**, *382*, 1194-1196, doi:10.1056/NEJMp2002125.
- 403 21. Kim, Y.J.; Seo, M.H.; Yeom, H.E. Estimating a breakpoint in the spread pattern of COVID-
404 19 in South Korea. *Int J Infect Dis* **2020**, 10.1016/j.ijid.2020.06.055,
405 doi:10.1016/j.ijid.2020.06.055.
- 406 22. Wood, S.N. *Generalized Additive Models: An Introduction with R*, 2nd ed.; Chapman and
407 Hall/CRC: 2017.
- 408 23. Brandt, P.T.; Sandler, T. A bayesian Poisson vector autoregressive model. *Political Analysis*
409 **2012**, *20*, 23.
- 410 24. Yang, Z.; Hardin, J.W.; Addy, C.L.; Vuong, Q.H. Testing approaches for overdispersion in
411 poisson regression versus the generalized poisson model. *Biom J* **2007**, *49*, 565-584,
412 doi:10.1002/bimj.200610340.
- 413 25. Lauer, S.A.; Grantz, K.H.; Bi, Q.; Jones, F.K.; Zheng, Q.; Meredith, H.R.; Azman, A.S.; Reich,
414 N.G.; Lessler, J. The Incubation Period of Coronavirus Disease 2019 (COVID-19) From
415 Publicly Reported Confirmed Cases: Estimation and Application. *Ann Intern Med* **2020**,
416 10.7326/M20-0504, doi:10.7326/M20-0504.
- 417 26. Hilbe, J.M. *Modeling Count Data*; Cambridge University Press: 2014.
- 418 27. Carpenter, B.; Gelman, A.; Hoffman, M.D.; Lee, D.; Goodrich, B.; Betancourt, M.; Brubaker,
419 M.; Guo, J.; Li, P.; Riddell, A. Stan: A probabilistic programming language. *Journal of*
420 *Statistical Software* **2017**, *76(1)*, doi:10.18637/jss.v076.i01.
- 421 28. Li, Q.; Guan, X.; Wu, P.; Wang, X.; Zhou, L.; Tong, Y.; Ren, R.; Leung, K.S.M.; Lau, E.H.Y.;
422 Wong, J.Y., et al. Early Transmission Dynamics in Wuhan, China, of Novel Coronavirus-
423 Infected Pneumonia. *N Engl J Med* **2020**, *382*, 1199-1207, doi:10.1056/NEJMoa2001316.
- 424 29. Davies, N.G.; Klepac, P.; Liu, Y.; Prem, K.; Jit, M.; Eggo, R.M. Age-dependent effects in the
425 transmission and control of COVID-19 epidemics. *medRxiv* **2020**,
426 10.1101/2020.03.24.20043018, 2020.2003.2024.20043018, doi:10.1101/2020.03.24.20043018.

- 427 30. Zhang, J.; Litvinova, M.; Liang, Y.; Wang, Y.; Wang, W.; Zhao, S.; Wu, Q.; Merler, S.;
428 Viboud, C.; Vespignani, A., et al. Changes in contact patterns shape the dynamics of the
429 COVID-19 outbreak in China. *Science* **2020**, 10.1126/science.abb8001,
430 doi:10.1126/science.abb8001.
- 431 31. Mossong, J.; Hens, N.; Jit, M.; Beutels, P.; Auranen, K.; Mikolajczyk, R.; Massari, M.;
432 Salmaso, S.; Tomba, G.S.; Wallinga, J., et al. Social contacts and mixing patterns relevant to
433 the spread of infectious diseases. *PLoS Med* **2008**, *5*, e74, doi:10.1371/journal.pmed.0050074.
- 434 32. Cowling, B.J.; Ho, L.M.; Leung, G.M. Effectiveness of control measures during the SARS
435 epidemic in Beijing: a comparison of the Rt curve and the epidemic curve. *Epidemiol Infect*
436 **2008**, *136*, 562-566, doi:10.1017/S0950268807008722.
- 437 33. Gostic, K.; Gomez, A.C.; Mummah, R.O.; Kucharski, A.J.; Lloyd-Smith, J.O. Estimated
438 effectiveness of symptom and risk screening to prevent the spread of COVID-19. *Elife* **2020**,
439 *9*, doi:10.7554/eLife.55570.
- 440 34. Pan, A.; Liu, L.; Wang, C.; Guo, H.; Hao, X.; Wang, Q.; Huang, J.; He, N.; Yu, H.; Lin, X., et
441 al. Association of Public Health Interventions With the Epidemiology of the COVID-19
442 Outbreak in Wuhan, China. *JAMA* **2020**, 10.1001/jama.2020.6130, doi:10.1001/jama.2020.6130.
- 443 35. Yu, X. Modeling Return of the Epidemic: Impact of Population Structure, Asymptomatic
444 Infection, Case Importation and Personal Contacts. *medRxiv* **2020**,
445 10.1101/2020.04.26.20081109, 2020.2004.2026.20081109, doi:10.1101/2020.04.26.20081109.
- 446 36. Bai, Y.; Yao, L.; Wei, T.; Tian, F.; Jin, D.Y.; Chen, L.; Wang, M. Presumed Asymptomatic
447 Carrier Transmission of COVID-19. *JAMA* **2020**, 10.1001/jama.2020.2565,
448 doi:10.1001/jama.2020.2565.
- 449 37. Li, C.; Ji, F.; Wang, L.; Wang, L.; Hao, J.; Dai, M.; Liu, Y.; Pan, X.; Fu, J.; Li, L., et al.
450 Asymptomatic and Human-to-Human Transmission of SARS-CoV-2 in a 2-Family Cluster,
451 Xuzhou, China. *Emerg Infect Dis* **2020**, *26*, doi:10.3201/eid2607.200718.
- 452 38. Li, G.; Li, W.; He, X.; Cao, Y. Asymptomatic and Presymptomatic Infectors: Hidden Sources
453 of COVID-19 Disease. *Clin Infect Dis* **2020**, 10.1093/cid/ciaa418, doi:10.1093/cid/ciaa418.
- 454 39. Kucharski, A.J.; Russell, T.W.; Diamond, C.; Liu, Y.; Edmunds, J.; Funk, S.; Eggo, R.M.;
455 Centre for Mathematical Modelling of Infectious Diseases, C.-w.g. Early dynamics of
456 transmission and control of COVID-19: a mathematical modelling study. *Lancet Infect Dis*
457 **2020**, 10.1016/S1473-3099(20)30144-4, doi:10.1016/S1473-3099(20)30144-4.
- 458 40. IHME. *Forecasting COVID-19 impact on hospital bed-days, ICU-days, ventilator-days and deaths by*
459 *US state in the next 4 months. IHME COVID-19 health service utilization forecasting team; 2020.*
- 460 41. Woody, S.; Garcia Tec, M.; Dahan, M.; Gaither, K.; Lachmann, M.; Fox, S.; Meyers, L.A.;
461 Scott, J.G. Projections for first-wave COVID-19 deaths across the US using social-distancing
462 measures derived from mobile phones. *medRxiv* **2020**, 10.1101/2020.04.16.20068163,
463 2020.2004.2016.20068163, doi:10.1101/2020.04.16.20068163.
- 464 42. Consul, P. *generalized poisson distribution: properties and applications*; Marcel Decker: New
465 York, 1989.