

Modelling to Predict Hospital Bed Requirements for Covid-19 Patients in California

Santanu Basu
Sparkle Optics Corporation
Menlo Park, CA
[*sb201@sparkleoptics.com*](mailto:sb201@sparkleoptics.com)

ABSTRACT

A model to predict hospital bed requirements six weeks in advance to treat Covid-19 patients in California is presented. The model also gives prediction for number of cases and deaths during the same period. The model is versatile and can be applied to other countries and regions as well.

Key words: Coronavirus, Covid-19, SARS, model, analysis, data, hospital, ICU, infectious disease

INTRODUCTION

The new coronavirus, SARS-CoV-2 for the disease Covid-19 has spread rapidly through many countries in the world in the first four months of 2020 causing widespread deaths. Mathematical modeling of spreading of infectious diseases is a well-established field [1-2]. There have been a large number of recent efforts in modelling Coronavirus spreading as reported in the literature [3-6]. The Covid-19 cases have put significant strain in the hospital systems around the world. It would be of great benefit to the medical care facilities if the Covid-19 patient load could be known six weeks in advance. This would enable distributing case load among hospitals and to adequately equip the hospitals with staffing, PPE and life support equipment. This is the objective of this paper.

A mathematical model has been recently developed [3] to analyze the Covid-19 case data (time dependent number of cases, deaths and hospitalization) in any country or state. We first present the prediction of Covid-19 cases and hospitalization requirements for the state of California, USA using the model. Next we present the methodology and the model in detail.

PREDICTION OF HOSPITAL BED REQUIREMENTS IN CALIFORNIA

Covid-19 case data for California was obtained from [7] and the numbers of regular and ICU hospital beds were obtained from the California Health and Human Services websites [8,9]. The first confirmed case of Covid-19 in California was on January 26th, 2020. Reliable case numbers became available from March 4th, 2020 [7]. Reliable numbers for hospital bed usage since March 29th are available in [8].

The mathematical model used to predict number of cases and hospital loads will be presented in the next section. In this section, we will present the results using the model for the state of California. The model is parametric and transparent so that predictions are based on parameters which are in principle measurable and the predictions can be continuously corrected as more

accurate data on parameters become available. Normal curve fitting models which are not based on any real-life parameters tend to have high degree of error in making projections. Also the standard machine learning based and curve-fitting models cannot accurately do what-if experiments, such as what would be the effect of timing of lifting of social distancing measures on the number of cases.

The model has twenty one user-supplied variable parameters, three of which influence the results greatly. These three are (1) the first date of implementation of social distancing protocols since the viral outbreak, (2) the rate at which the rate of transmission decreases by using the government measures and (3) the final rate of transmission in the long run. The California data could be fitted well with March 14th to be the first date (n_1) of transmission rate decrease, 16 days for exponential time constant for transmission rate decrease (G) and 4.5% for the final transmission rate (T_f). The comparison between the model predictions and actual data on number of cases and deaths are shown in figures 1 and 2 respectively. The figures demonstrate that the model fits the actual data very well.

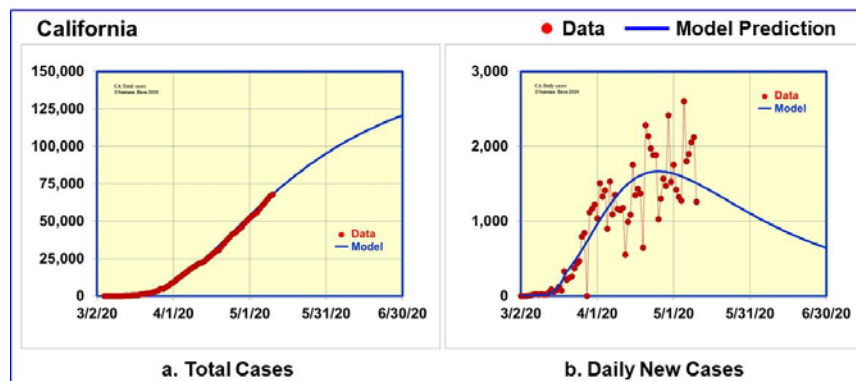


Figure 1. Data and model predictions for Covid-19 cases in California

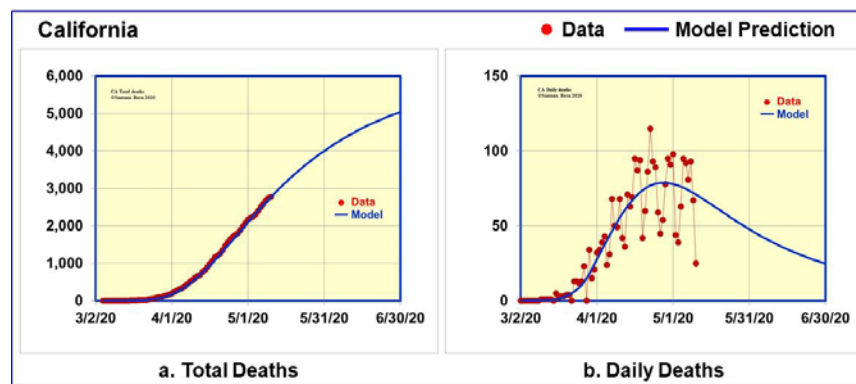


Figure 2. Data and model predictions for Covid-19 deaths in California

Having anchored the model to actual data until May 10th, we are in a position to make reliable projections for six weeks in advance. The model predicts the number of cases to rise to between 120,000 and 145,000 and the number of deaths to rise to between 5,000 and 5,800 on June 30th,

2020. The model also predicts the daily number of cases to fall to 640 and the number of daily deaths to fall to 25 on the same date.

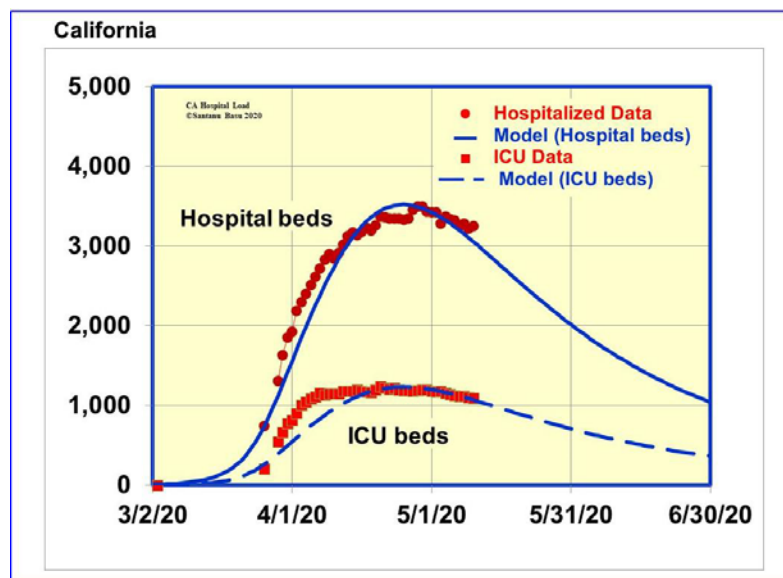


Figure 3. Data and model predictions for Covid-19 hospitalizations in California

Figure 3 shows the comparison between the model predictions and actual data [8] on number of hospitalizations until May 10th. We analyzed the data in [8] to determine daily variation of hospitalization rate and the ratio of ICU beds to the total number of hospital beds. The model fits the data very well as shown in figure 3 by assuming 35% of the patients require ICU beds. The model predicts the number of hospitalizations to decrease from 3,248 on May 10th to 2,000 on May 31st and to 1,050 on June 30th, 2020. The number of ICU beds also will decrease from 1,093 on May 10th to 700 on May 31st and to 360 on June 30th, 2020

METHODOLOGY

In this section we study the propagation of a new infectious disease through an isolated country's population, P . With some simple modifications, the procedure can be applied to recurring outbreak of the same virus and also to the normal state in which there is population movement among countries.

Figure 4 is a schematic of our model. Let n be the number of days since the onset of virus infection. The entire population of virus infected people is classified in six categories:

- I – people in whom the virus is in incubation
- A – people who are infected with the virus but who do not exhibit any symptoms
- S – non-hospitalized patients who exhibit mild symptoms of the viral infection
- H – hospitalized patients who are in acute condition

D – people who have died from the disease

R – people who have recovered from the illness and awaiting to be declared clinically recovered

R^C – people who are counted as clinically recovered

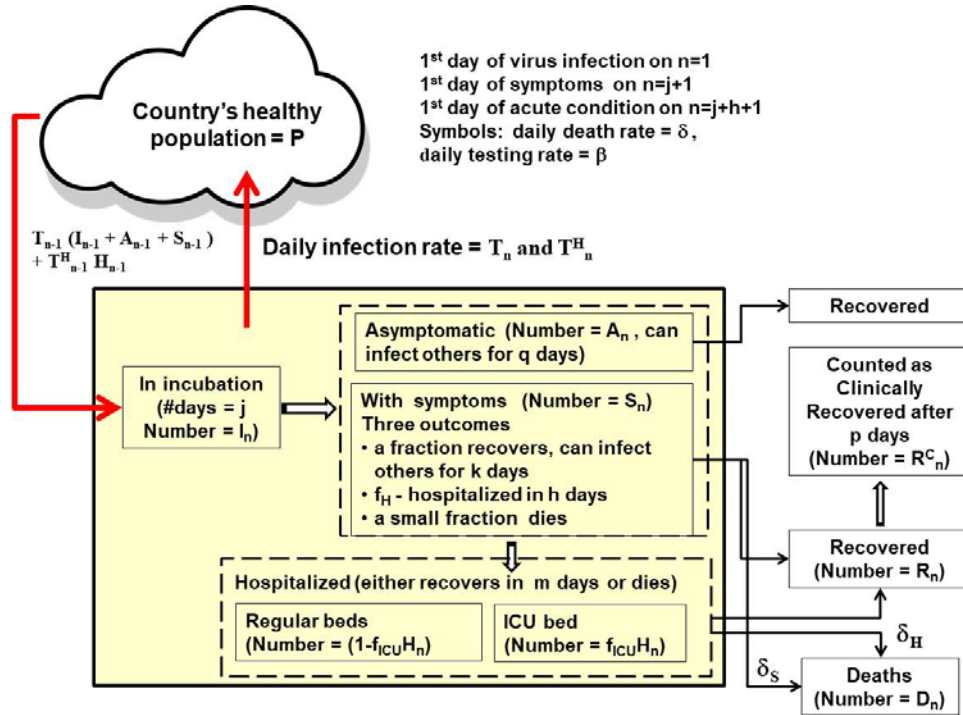


Figure 4. Schematic of the mathematical model for the virus infected cases

On any day n , the total number of people who have been infected with the virus is N_n , where

$$N_n = I_n + A_n + S_n + H_n + D_n + R_n + R_n^C \quad (1)$$

We denote the incubation period for the virus in number of days by j . The model assumes each infected person spends j days in incubation and is capable of infecting others. Let I_n be the total population of infected people who are still in the incubation period on day n . Let I_n^i be the population of those infected people in the incubation period on day n who have been infected for i number of days (i ranges from 1 to j).

$$I_n = I_n^1 + I_n^2 + \dots + I_n^j = \sum^i I_n^i \quad (2)$$

We assume that after the incubation period of j days, each infected person either is asymptomatic or shows symptoms of the disease. Let A_n^i be the population on day n of those asymptomatic people who have been carrying the virus for $j+i$ number of days ($1 \leq i \leq q$) and let A_n be the total population of asymptomatic people who are capable of infecting others.

$$A_n = A_n^1 + A_n^2 + \dots + A_n^q = \sum^i A_n^i \quad (3)$$

Let S_n^i be the population on day n of non-hospitalized patients who have been showing mild symptoms for i number of days ($1 \leq i \leq k$) and let S_n be the total population of non-hospitalized patients.

$$S_n = S_n^1 + S_n^2 + \dots + S_n^k = \sum^i S_n^i \quad (4)$$

For each person with symptoms, there are three outcomes. A fraction, f_H is hospitalized, a small fraction dies at a rate of δ_S per person per day, and the remaining fraction recovers. The average time between showing symptoms and hospitalization is $h \leq k$. We assume each patient with symptoms is capable of infecting others for a total of $j+k$ number of days.

Let H_n be the total population of patients who are hospitalized (in acute condition) on day n . Let H_n^i be the population on day n of those infected patients who have been hospitalized for i number of days (i ranges from $1 \leq i \leq m$).

$$H_n = H_n^1 + H_n^2 + \dots + H_n^m = \sum^i H_n^i \quad (5)$$

Out of the hospitalized patients, a fraction f_{ICU} is admitted to the ICU, the remaining fraction ($1 - f_{ICU}$) requires a regular hospital bed. The number of patients in the ICU is

$$H_n^{ICU} = f_{ICU} H_n \quad (6)$$

We denote the probability of death among the hospitalized patients to be δ_H^i per day and the length of hospital stay to be m number of days. The patients who survive m days in the hospital are recovered but generally needs to wait p more days before being counted as clinically recovered.

The total number of people who are currently infected on day n and who are able to transmit the virus is $(I_n + A_n + S_n + H_n)$. Out of this population, only $(S_n + H_n)$ number of people show outward signs of the disease. Ironically in the beginning of the outbreak, when $(S_n + H_n)$ is small, the problem is sometimes underestimated without realizing that the disease is spreading exponentially everyday by the entire infected population $(I_n + A_n + S_n + H_n)$. The ratio $(I_n + A_n + S_n + H_n) / (S_n + H_n)$ can be very high at the onset of the viral outbreak. The time to take swift, decisive and uniform measures to prevent spreading of the disease is when $(S_n + H_n)$ is small (for example less than 10).

We denote the rate of transmission of the virus from an infected person to a healthy person per day by T_n . Another way of quantifying the rate of transmission that has been used in the literature is infection reproductive number which for SARS-CoV-2 is reported to be ~ 2.5 [10-11]. Let N_0 be the number of infected people on the first day. The numbers of infected people on the first two days of the outbreak are:

$$I_1 = N_0 \quad (7)$$

$$I_2 = N_0 (1 + T_1) \quad (8)$$

In general, the number of newly infected people on day n is given by

$$I_n^1 = T_{n-1} (I_{n-1} + A_{n-1} + S_{n-1}) + T_{n-1}^H H_{n-1} \quad (9)$$

where T_n^H is the rate of transmission from an hospitalized patient to a healthy person. In a well-managed hospital, $T_n^H = 0$. A fraction, f_a , of the newly infected people is asymptomatic of the disease. An estimate of $f_a = 30\%$ has been given in [12] which has been used in this model calculations. The number of new patients with mild symptoms on day n is given by

$$S_n^1 = (1 - f_a) I_{n-1}^j \quad (10)$$

Similarly the number of new asymptomatic patients on day n is given by

$$A_n^1 = f_a I_{n-1}^j \quad (11)$$

The number of new hospitalized patients on day n is given by

$$H_n^1 = \sum^i f_H^i S_{n-1}^i \quad (12)$$

For simplicity, we can assume $f_H^i = 0$ for $i \neq h$. The numbers of patients who die and recover from mild symptoms on day n are given by $\sum^i \delta_S^i S_n^i$ and $(1 - \delta_S^k) S_{n-1}^k$ respectively. Similarly the numbers of hospitalized patients who die and recover from acute conditions on day n are given by $\sum^i \delta_H^i H_n^i$ and $(1 - \delta_H^m) H_{n-1}^m$ respectively.

$$A_n^{i+1} = A_{n-1}^i \text{ for } 0 \leq i \leq k-1, n > 1 \quad (13)$$

$$S_n^{i+1} = (1 - f_H^i - \delta_S^i) S_{n-1}^i \text{ for } 0 \leq i \leq k-1, n > 1 \quad (14)$$

$$H_n^{i+1} = (1 - \delta_H^i) H_{n-1}^i \text{ for } 0 \leq i \leq m-1, n > 1 \quad (15)$$

The number of deaths caused by the virus on day n is given by

$$D_n = \sum^i \delta_S^i S_n^i + \sum^i \delta_H^i H_n^i \quad (16)$$

The number of patients who recover from the disease on day n is given by

$$R_n = (1 - f_H^k - \delta_S^k) S_{n-1}^k + (1 - \delta_H^m) H_{n-1}^m \quad (17)$$

After an infected person first recovers either from the mild symptom state or after being hospitalized, it takes p number of days for her or him to be counted as clinically recovered which may vary from county to county and state to state. The number of new cases of clinically recovered ex-patients on day n is given by

$$R_n^C = R_{n-p} \text{ for } n > p \text{ and } R_n^C = 0 \text{ for } n \leq p \quad (18)$$

Before the first person showing symptoms of the disease caused by the new virus and shortly thereafter up to day n_1 , the transmission rate T_n is assumed to be constant at an initial value T_0 :

$$T_n = T_0 \text{ for } 1 \leq n \leq n_1 \quad (19)$$

Typically the authorities take steps to prevent the spreading of the disease such as patient isolation and testing, contact tracing and social distancing. As a result T_n decreases with time. The model is capable of including actual time dependent transmission data. However at this time such data for the Coronavirus case is not available. A reasonable approximation is exponential decay of the rate of transmission T_n from infected persons to the general population. Let G be the number of days it takes for $T_n - T_f$ to decrease by 63% of $T_0 - T_f$, and let T_f be the long term steady state value of T_n .

$$T_n = T_f + (T_0 - T_f) \exp(- (n - n_1) / G) \text{ for } n_1 < n \quad (20)$$

The transmission rate from a hospitalized patient is assumed to be a fraction of T_n

$$T_n^H = f^{TH} T_n \quad (21)$$

Three parameters n_1 , G and T_f in equation (20) were found to be the most significant parameters affecting the number of infected cases and number of deaths from the virus. The data from countries with smaller number of cases could be fit well with smaller n_1 , G and T_f . In this paper, we will limit the analysis to the first outbreak of the virus in which T_n reduces to a final value T_f . It may also happen that social distancing measures are lifted due to economic or social necessities before the virus is completely extinguished within the population, which would cause T_n to rise again from T_f which may lead to a recurrence. The recurrence can be modelled in future using the methodology given in this paper.

Let σ_n per day per person be the rate of testing of the entire population, P of the country including the infected people without symptoms ($I_n + A_n$) on any day n . Let β_n per day per person be the testing rate of patients with symptoms. Except during the first few days of the virus outbreak, when testing is being developed, $\beta_n = 1$ in general for people with symptoms.

Cumulative number of cases with symptoms on day n is given by

$$C_n = \sum^i S_i^1 \quad \text{for } 1 \leq i \leq n \quad (22)$$

Cumulative number of reported cases which have been positively tested for the virus C_n^R is given by

$$C_n^R = \sum^i (1-e_i) \beta_i S_i^1 \quad \text{for } 1 \leq i \leq n \quad (23)$$

Where e_i is the error in reporting the number of patients on i th day. For this paper, we have assumed that the source of data [7-9,13-16] is accurate as of now, and assume $e_i = 0$ for all i . Due to imperfection in the process, often times there is error in reporting the number of cases and also the data is modified from time to time as the accounting procedure changes. The model presented here is flexible and it can incorporate changes in the data set as it is corrected from time to time. However this model is not capable of predicting suppressed case data.

Cumulative number of deaths on day n is given by

$$E_n = \sum^i D_i \quad \text{for } 1 \leq i \leq n \quad (24)$$

Cumulative number of reported deaths E_n^R is given by

$$E_n^R = \sum^i (1-e_i) \beta_i D_i \quad \text{for } 1 \leq i \leq n \quad (25)$$

The number of active infected cases which are confirmed by testing and reported on day n can be expressed as:

$$B_n = (1-e_n) (\sigma_n (I_n + A_n) + \beta_n (S_n + H_n)) \quad (26)$$

The number of reported hospitalized patients on day n is given by:

$$H_n^R = (1-e_n) \beta_n H_n \quad (27)$$

The number of reported hospitalized patients who are in ICU on day n is given by:

$$H_n^R = (1-e_n) \beta_n f_{ICU} H_n \quad (28)$$

In the model, the testing rates σ_n and β_n are considered time dependent as follows:

$$\beta_n = 0 \quad \text{for } 1 \leq n \leq j \quad (29)$$

$$\beta_n = \beta_0 \text{ for } j+1 \leq n \leq n_2 \quad (30)$$

$$\beta_n = \beta_0 + ((1 - \beta_0) (n - n_2) / n_\beta) \text{ for } n_2 \leq n \leq n_2 + n_\beta \quad (31)$$

$$\beta_n = 1 \text{ for } n > n_2 + n_\beta \quad (32)$$

$$\text{and, } \sigma_n = 0 \text{ for } 1 \leq n \leq n_2 + n_\beta \quad (33)$$

$$\sigma_n = \sigma_f ((n - (n_2 + n_\beta)) / W) \text{ for } n_2 + n_\beta \leq n \leq n_2 + n_\beta + W \quad (34)$$

$$\sigma_n = \sigma_f \text{ for } n > n_2 + n_\beta + W \quad (35)$$

The rationale for choosing different testing rates is as follows. During the first j number of incubation days of the outbreak there is no testing and $\beta_n = 0$. During the first outbreak of the virus, it takes several days to identify the new virus and to develop an initial test, during which period the testing rate of the patients showing symptoms is low, denoted by β_0 . Let n_β be the number of days to ramp up the testing of the patients with symptoms to 100% final testing rate. The testing rate σ_n for the general population including those who are infected and not showing symptoms is assumed to be zero until $n = n_2 + n_\beta$ and let W be number of days it takes to build up the testing capability to test the general population at a final rate of σ_f . This recognizes that large scale production of testing supplies and development of infrastructure and resources for administering of tests in large numbers take time.

Model parameters

We test this model to explain the number of Covid-19 cases in a small number of countries at first – Italy, South Korea and New Zealand. These three countries in three continents had very different outcomes of Covid-19 cases and provide a good basis to anchor the model which is designed to be applicable to any country. We collected the data on cumulative total number of cases and deaths for these countries from reliable sources [7-9,13-16] for the period January 1st, 2020 to May 8th, 2020. We assumed that the aforementioned data sources were reliable and did not verify the accuracy of the data in the datasets. The actual data used in this paper is included in table I in the appendix for the reader to verify. In some cases there is available data on number of recovered cases and active cases. Due to different definitions used in different countries for the criteria used for recovered cases and active cases, we placed much less emphasis on the data on active and recovered cases.

There are twenty one variable parameters in the model description. These are $j, k, m, h, p, N_o, T_o, T_f, n_1, G, \beta_0, e, n_2, n_\beta, \delta_H, \delta_S, \sigma_f, W, f^{TH}, f_H$ and f_{ICU} . The strength of this model is that it is based on parameters which can be measured. In the beginning of the virus outbreak, the parameter values are not well known. However in the long run, the parameters values can be extracted from the actual data and the errors in model predictions can be reduced. We start with reasonable assumptions for each parameter and then use the model to fit the published data on total and daily numbers of cases and deaths for each country to iteratively optimize the values of some of the parameters. At the end of iterations, the parameter values that best fit the country data are obtained. With these parameters values, we are in a position

(1) to predict the number of cases and required number of hospital beds and

(2) to carry out what if analyses on some of the parameters (such as lifting of social distancing requirement)

The initial values of the parameters j , k , m , h , p , f_H and f_{ICU} are obtained from data presented in the literature. In this model, we have used $j = 5$ [18-20], $k = 14$ [18,20-22], $m = 11$ [18,20], $h = 10$ [18,20,22-23], $p = 3$ [18,21-22], $q = 14$ [18,20-22], $f_H = 17\%$ [19-20,24-25], $f_{ICU} = 33\%$ [20,24-25]. In addition we used $e_i = 0$ for all i and $f_a = 30\%$ [12]. The value of p varies widely due to different standards at different places.

It is to be noted that there is daily variation and probability distribution function for each of these model parameters which in principle can be measured. The time and location dependent data on these parameters for Covid-19 in each country is not available yet. When the daily values of these parameters become available on a later date, these can be inserted in the model. For each parameter such as j and m mentioned above there is a range of values. In the model, we used one constant value for each parameter which is very reasonable approximation at this stage of data availability.

We carry out multivariate optimization to fit the data for each country between Jan 1st and May 8th of 2020. This can be considered as the training set. Starting with reasonable initial conditions in the model, iterations are made in the algorithm until the residual errors in fitting the published data during Jan 1st and May 8th 2020 for each country are minimized. At that point the final values of all parameters for this predictive model for each country become available. Once the optimization is completed, the model becomes powerful to yield information such as (1) predicted number of future cases, (2) sensitivity analysis such as the effect of delay in taking initial measures, and (3) recurrence of the disease. We discuss the results in the next section.

RESULTS AND DISCUSSION

Figure 5 shows the comparison between the Covid-19 case data and the model prediction for Italy. The first reported Covid-19 case in Italy was on Feb 15th, 2020. There were 3 total cases on Feb 19 and the first death was on Feb 21. The model fitted the Italy Covid-19 case data with Feb 22 start date for transmission factor decrease when the number of cases was 79 and a transmission decay rate of $1/G$, where $G= 14$. The model fits the data very well. The model predicts the number of cases to rise to between 232,000 and 239,000 and the number of deaths to rise to between 34,000 and 35,000 on June 30th, 2020.

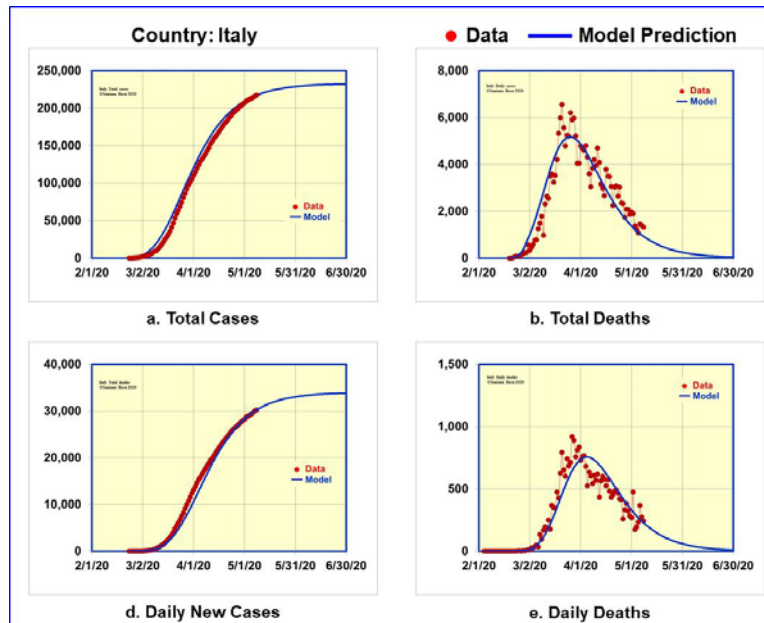


Figure 5. Data and model predictions for Covid-19 cases in Italy

Figure 6 shows the comparison of the actual data and the model predictions for South Korea which had a factor of twenty less number of cases than Italy. The daily case data for South Korea has been available since Feb 15th. There were 28 total cases on Feb 15th and the first Covid-19 death was on Feb 20th. The model fitted the South Korea Covid-19 data with Feb 18th start date for transmission factor decrease when the number of cases was 31 and $G=6$.

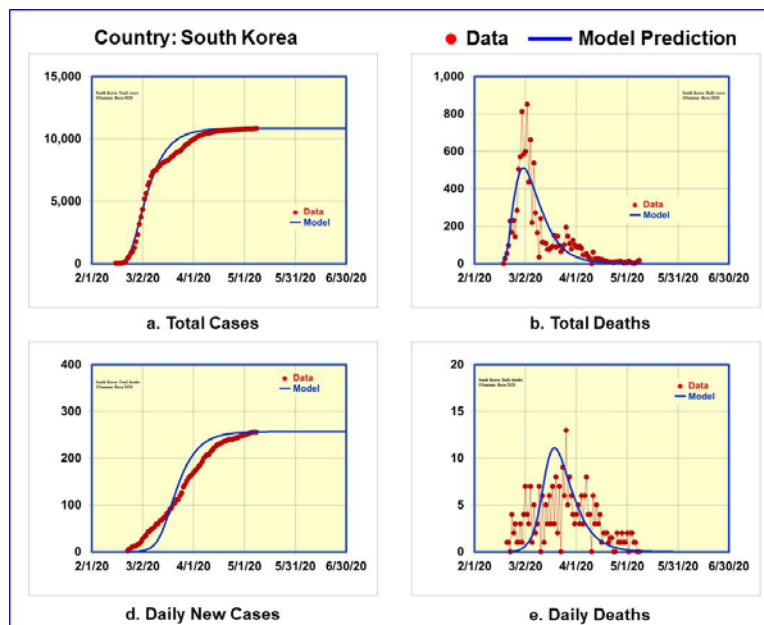


Figure 6. Data and model predictions for Covid-19 cases in South Korea

Unless there is a recurrence, the model does not predict any significant rise in number of cases or deaths by June 30th, 2020. Comparing model parameters for Italy and South Korea, we found that the number of cases were lower when T_n started decreasing and G was smaller for South Korea.

Figure 7 shows the comparison of the actual data and the model predictions for New Zealand which had a factor of seven less number of cases than South Korea. The daily case data for New Zealand became available since Mar 6th on which date there were 4 total cases. The first Covid-19 death was on Mar 28th. The model fitted the New Zealand Covid-19 data using the start date of reduction in T_n when the total number of reported cases was only 8, and the transmission factor to decay in $G=10$ days. Unless there is a recurrence, the model does not predict any significant rise in number of cases or deaths in New Zealand by June 30th, 2020.

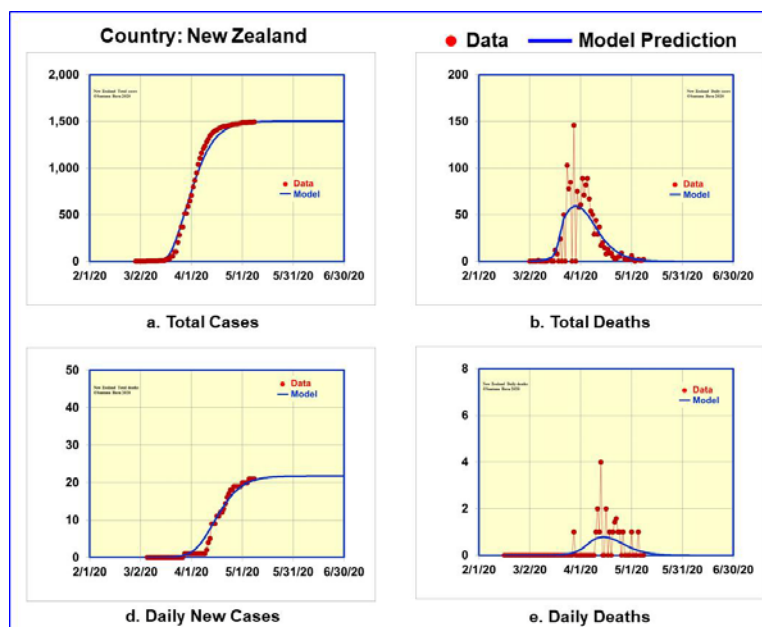


Figure 7. Data and model predictions for Covid-19 cases in New Zealand

Comparing data from Italy, South Korea and New Zealand, the model makes it obvious that when a country takes timely, swift and uniform virus containment measures at the point when the total number of cases is small, the number of infected cases and deaths are small. It is very similar to containment strategy for wildfire: sooner to detect, sooner to start containment, the less the spread and the resulting destruction. Even a day of waiting makes a big difference in the case of Coronavirus. In the model, transmission factors started reducing for Italy, South Korea and New Zealand when the total cases were 79, 31 and 8 respectively.

In conclusion, we have developed a mathematical model that provides insight into the Covid-19 viral outbreak cases in any country. The model fits the data very well for Italy, South Korea, New Zealand and California with different levels of cases and casualties. We also presented predictions from the model for hospital bed requirements six weeks in advance which can be very valuable for providing medical services to reduce casualties. Since conditions change daily which causes the

model parameters to change, we do not predict more than six weeks in advance. The model is transparent and is based on parameters which are measurable. This allows the model calculations to be updated as the actual data of the parameters become available. Overall the model makes the hopeful conclusion that Covid-19 can be effectively contained by taking timely social distancing and patient isolation measures before ultimately a vaccine becomes available.

Additional Information

Correspondence and requests for materials should be addressed to the author.

References

1. Anderson, R.M. and May, R.M., *Infectious diseases of humans: dynamics and control* (Oxford University Press, Oxford, 1991)
2. Hethcote, H.W. "The mathematics of infectious diseases" *Society for Industrial and Applied Mathematics* **42**, 599–653 (2000)
3. Basu, S. (2020, April 28) "A Mathematical Model to Analyze Data on Coronavirus Cases" <https://doi.org/10.31224/osf.io/95arg>
4. Lin, Q., Zhao, S. et al, "A conceptual model for the coronavirus disease 2019 (COVID-19) outbreak in Wuhan, China and individual reaction and governmental action" *International journal of infectious diseases*. **93**, 211-216 (2020)
5. Kucharski, A.J., Russell, T.W. et al, "Early dynamics of transmission and control of COVID-19: a mathematical modelling study", www.thelancet.com/infection Published online March 11, 2020 [https://doi.org/10.1016/S1473-3099\(20\)30144-4](https://doi.org/10.1016/S1473-3099(20)30144-4)
6. Wu, J.T., Leung, K. and Leung, G.M., "Nowcasting and forecasting the potential domestic and international spread of the 2019-nCoV outbreak originating in Wuhan, China: a modelling study", www.thelancet.com Vol 395 , p. 689, February 29, 2020
7. https://en.wikipedia.org/wiki/COVID-19_pandemic_in_California
8. https://public.tableau.com/views/COVID-19PublicDashboard/Covid-19Hospitals?%3Aembed=y&%3Adisplay_count=no&%3AshowVizHome=no
9. <https://data.chhs.ca.gov/dataset/california-covid-19-hospital-data-and-case-statistics>
10. He, X. et al, "Temporal dynamics in viral shedding and transmissibility of COVID-19", *Nature Medicine*, vol 26, pp. 672-675, May 2020, www.nature.com/naturemedicine
11. <https://www.cdc.gov/coronavirus/2019-ncov/hcp/clinical-guidance-management-patients.html>
12. Nishiura, H., Miyama, T. et al, "Estimation of the asymptomatic ratio of novel coronavirus infections (COVID-19)", to appear in *International journal of infectious diseases* (2020).
13. World Health Organization website <https://www.who.int/emergencies/diseases/novel-coronavirus-2019>
14. World Health Organization website <https://www.who.int/docs/default-source/coronaviruse/who-china-joint-mission-on-covid-19-final-report.pdf>
15. U.S. Center for Disease Control and Prevention website <https://www.cdc.gov/coronavirus/2019-ncov/index.html>
16. <https://www.worldometers.info/coronavirus/>
17. <https://www.cdc.gov/coronavirus/2019-ncov/cases-updates/index.html>
18. Chang, D. et al, "Time Kinetics of Viral Clearance and Resolution of Symptoms in Novel Coronavirus Infection", DOI: 10.1164/rccm.202003-0524LE on March 23, 2020

19. Li, Q. et al, “Early Transmission Dynamics in Wuhan, China, of Novel Coronavirus–Infected Pneumonia”, *n engl j med* 382;13 nejm.org March 26, 2020
20. <https://www.cdc.gov/coronavirus/2019-ncov/hcp/clinical-guidance-management-patients.html>
21. Sethuraman, N., Jeremiah, S.S. and Ryo, A., “Interpreting Diagnostic Tests for SARS-CoV-2”, May 6, 2020. doi:[10.1001/jama.2020.8259](https://doi.org/10.1001/jama.2020.8259)
22. Zhou, F. et al, “Clinical course and risk factors for mortality of adult inpatients with COVID-19 in Wuhan, China: a retrospective cohort study”, *Lancet* 2020; 395: 1054–62
23. <https://www.cdc.gov/coronavirus/2019-ncov/hcp/disposition-hospitalized-patients.html>
24. CDC COVID-19 Response Team, “Severe Outcomes Among Patients with Coronavirus Disease 2019 (COVID-19) — United States, February 12–March 16, 2020”, *MMWR*, vol 69(12), March 27, 2020
25. Kashyap, S., Gombar, S. et al, “Measure what matters: counts of hospitalized patients are a better metric for health system capacity planning for a reopening”, medRxiv preprint doi: <https://doi.org/10.1101/2020.04.19.20072017>

APPENDIX

Date	South Korea		Italy		New Zealand		California			
	Total cases	Total deaths	Total cases	Total deaths	Total cases	Total deaths	Total cases	Total deaths	Hospital patients on day	ICU patients on day
14-Feb-20										
15-Feb-20	28		3							
16-Feb-20	29		3							
17-Feb-20	30		3							
18-Feb-20	31		3							
19-Feb-20	58		3							
20-Feb-20	111	1	4							
21-Feb-20	209	2	21	1						
22-Feb-20	436	2	79	2						
23-Feb-20	602	6	157	3						
24-Feb-20	833	8	229	7						
25-Feb-20	977	11	323	11						
26-Feb-20	1261	12	470	12						
27-Feb-20	1766	13	655	17						
28-Feb-20	2337	16	889	21	1					
29-Feb-20	3150	17	1128	29	1					
01-Mar-20	3736	21	1701	41	1					
02-Mar-20	4335	28	2036	52	1					
03-Mar-20	5186	32	2502	79	2					
04-Mar-20	5621	35	3089	107	3		53	1		
05-Mar-20	6284	42	3858	148	4		60	1		
06-Mar-20	6503	43	4636	197	4		69	1		
07-Mar-20	7041	48	5883	233	5		88	1		
08-Mar-20	7313	50	7375	366	5		114	1		
09-Mar-20	7478	53	9172	463	5		133	1		
10-Mar-20	7513	60	10149	631	5		157	2		
11-Mar-20	7755	60	12462	827	5		177	3		
12-Mar-20	7869	66	15113	1016	5		198	4		
13-Mar-20	7979	67	17660	1266	6		247	5		
14-Mar-20	8086	72	21157	1441	8		335	6		
15-Mar-20	8162	75	24747	1809	8		392	6		
16-Mar-20	8236	81	27980	2158	8		472	11		
17-Mar-20	8320	84	31506	2503	20		598	13		
18-Mar-20	8413	91	35713	2978	28		675	16		
19-Mar-20	8565	94	41035	3405	28		1006	19		
20-Mar-20	8652	102	47021	4032	52		1224	23		
21-Mar-20	8799	104	53578	4825	52		1468	27		
22-Mar-20	8897	111	59138	5476	102		1733	27		
23-Mar-20	8961	111	63927	6077	102		2102	40		
24-Mar-20	9037	120	69176	6820	205		2535	53		
25-Mar-20	9137	126	74386	7503	283		3006	65		
26-Mar-20	9332	139	80589	8215	368		3801	78	746	200

Table I. Covid-19 case data for South Korea, Italy, New Zealand and California (Jan 1- May 8, 2020)

Date	South Korea		Italy		New Zealand		California			
	Total cases	Total deaths	Total cases	Total deaths	Total cases	Total deaths	Total cases	Total deaths	Hospital patients on day	ICU patients on day
27-Mar-20	9478	144	86498	9134	368		4643	101		
28-Mar-20	9583	152	92472	10023	514	1	4643	101		
29-Mar-20	9661	158	97689	10779	514	1	5763	135	1307	545
30-Mar-20	9786	162	101739	11591	589	1	6932	150	1629	665
31-Mar-20	9887	165	105792	12428	647	1	8155	171	1855	774
01-Apr-20	9976	169	110574	13155	708	1	9191	203	1922	816
02-Apr-20	10062	174	115242	13915	797	1	10701	237	2188	901
03-Apr-20	10156	177	119827	14681	868	1	12026	276	2300	1008
04-Apr-20	10237	183	124632	15362	950	1	13438	319	2398	1040
05-Apr-20	10284	186	128948	15887	1039	1	14336	343	2509	1085
06-Apr-20	10331	192	132547	16523	1106	1	15865	374	2611	1108
07-Apr-20	10384	200	135586	17127	1160	1	16957	442	2714	1154
08-Apr-20	10423	204	139422	17669	1210	1	18309	492	2825	1132
09-Apr-20	10450	208	143626	18279	1239	1	19472	541	2897	1145
10-Apr-20	10450	208	147577	18849	1283	2	20615	609	2846	1145
11-Apr-20	10512	214	152271	19468	1312	4	21794	651	2917	1145
12-Apr-20	10537	217	156363	19899	1349	5	22348	687	3015	1178
13-Apr-20	10564	222	159516	20465	1366	9	23338	758	3124	1177
14-Apr-20	10591	225	162488	21067	1386	9	24424	821	3171	1175
15-Apr-20	10613	229	165155	21645	1401	9	26182	890	3141	1191
16-Apr-20	10635	230	168941	22170	1409	11	27528	985	3180	1175
17-Apr-20	10653	232	172434	22745	1422	11	28963	1072	3221	1174
18-Apr-20	10661	234	175925	23227	1431	12	30333	1166	3196	1163
19-Apr-20	10674	236	178972	23660	1440	12	30978	1208	3257	1196
20-Apr-20	10683	237	181228	24114	1445	13	33261	1268	3365	1241
21-Apr-20	10692	238	184252	24595	1448	14	35396	1354	3357	1219
22-Apr-20	10702	240	187327	25085	1451	16	37369	1469	3343	1204
23-Apr-20	10708	240	189973	25549	1456	17	39254	1562	3344	1216
24-Apr-20	10718	240	192994	25969	1461	18	41137	1651	3343	1198
25-Apr-20	10728	242	195351	26384	1470	18	42164	1710	3324	1184
26-Apr-20	10738	243	197675	26644	1469	19	43464	1755	3343	1185
27-Apr-20	10752	244	199414	26977	1472	19	45031	1809	3455	1181
28-Apr-20	10761	246	201505	27359	1474	19	46500	1887	3495	1186
29-Apr-20	10765	247	203591	27682	1476	19	48917	1982	3497	1192
30-Apr-20	10774	248	205463	27967	1479	19	50442	2073	3428	1192
01-May-20	10780	250	207428	28236	1485	20	52197	2171	3423	1179
02-May-20	10793	250	209328	28710	1487	20	53616	2215	3423	1169
03-May-20	10801	252	210717	28884	1487	20	54,937	2,254	3284	1179
04-May-20	10804	254	211938	29079	1486	20	56,212	2,317	3369	1157
05-May-20	10806	255	213013	29315	1488	21	58,815	2,412	3334	1140
06-May-20	10810	256	214457	29684	1489	21	60,614	2,504	3319	1125
07-May-20	10822	256	215858	29958	1490	21	62,512	2,585	3250	1118
08-May-20	10840	256	217185	30201	1492	21	64,561	2,678	3282	1115

Table I (contd.). Covid-19 case data for South Korea, Italy, New Zealand and California (Jan 1- May 8, 2020)