

1 **Data-driven analysis on the simulations of the spread of**
2 **COVID-19 under different interventions of China**

3

4 Ting Tian^{1#}, Jingwen Zhang^{1#}, Shiyun Lin^{1#}, Yukang Jiang^{1#}, Jianbin Tan^{1#}, Zhongfei
5 Li², Xueqin Wang^{3,1*}

6

7 ¹School of Mathematics, Sun Yat-sen University, Guangzhou, 510275, China

8 ²School of Management, Sun Yat-sen University, Guangzhou, 510275, China

9 ³School of Management, University of Science and Technology of China, Hefei,
10 230026, China

11

12 * Correspondence author: wangxq20@ustc.edu.cn

13 Dr. T. Tian, J. Zhang, S. Lin, Y. Jiang, and J. Tan contributed equally to this article.

14

15

16

17

18

19

20

21

22 **Abstract**

23 **Objectives**

24 Since February 2020, COVID-19 has spread rapidly to more than 200 countries in the
25 world. During the pandemic, local governments in China implemented different
26 interventions to efficiently control the spread of the epidemic. Characterizing
27 transmission of COVID-19 under some typical interventions is to help countries
28 develop appropriate interventions.

29

30 **Methods**

31 We established compartmental model that allowed the number of infected and
32 infectious to be unknown and the effective reproduction number to change over time,
33 thus the effects of policies could be reasonably reflected and estimated. By using the
34 epidemic data of three representative cities of China (Wuhan, Wenzhou and
35 Shenzhen), we migrated the estimated policy modes to other countries.

36

37 **Results**

38 The smallest expected cumulative confirmed cases under different interventions
39 would be 5936 with 95% CI (5012,6966) for South Korea, 146012 with 95% CI
40 (140504, 154264) for Italy, and 400642 with 95% CI (390331,409431) for the United
41 States until May 31, 2020, respectively.

42

43 **Conclusions**

44 Based on the simulation of epidemic in South Korea, Italy and the United States, it is
45 reasonable that South Korea and Italy continue to maintain their current policies,
46 while the implementation of interventions of Wenzhou may significantly decrease the
47 magnitude of the outbreak of COVID-19 for the United States.

48

49 **Keywords:** Compartmental model; Time-varying reproduction number; Infected
50 individuals without isolation; Mode migration; Policy intervention

51

52 **Introduction**

53 Since December 2019, the first report of COVID-19 which was detected in Wuhan
54 was sent to the World Health Organization (WHO) by Chinese government (World
55 Health Organization, 2020a). The epidemic has rapidly spread to all provinces in
56 China and more than 200 countries around the world. WHO declared that COVID-19
57 became a pandemic on March 11, 2020 (World Health Organization, 2020b). China
58 issued a series of intervention policies to reduce the transmission of COVID-19, such
59 as suspending public transportations in areas of severe outbreak (e.g., Wuhan),
60 cancelling public gathering and delaying reopening of enterprises. These endeavors
61 have led to the significant suppression of the epidemic of COVID-19. There was no
62 domestically newly reported confirmed case for the first time in China on March 18,
63 2020 (Xinhuanet, 2020). The local and national responses of China have made

64 remarkable contributions to the prevention and control of COVID-19 at the expense
65 of the economic loss. Taking individual consumption industry as an example, the
66 amount of total retail sales of consumer goods decreased by about 20.5% with a sharp
67 drop of catering services by 43.1% from January to February 2020 compared to the
68 same duration of 2019 according to the National Bureau of Statistics in China (2020).
69 Consequently, policymakers need to anticipate the likely outcome of interventions in
70 terms of their own epidemic situations.

71 Predicting the scale of the epidemic is essential to inform policymakers the likely
72 outcomes of potential intervention options (Lipsitch et al., 2011), i.e. the expected
73 scale of cumulative confirmed cases for COVID-19 could provide insights into the
74 likely outcomes of different intervention policies. The estimation of the time-varying
75 reproduction numbers could indicate the effects of intervention policies (Cauchemez
76 et al., 2006, Wallinga and Teunis, 2004). Yang et al. (2020) showed that if the
77 implementation of intervention policies delayed 5 days, the expected scale of
78 cumulative confirmed cases would be over 3 times larger than actual ones in China. In
79 this study, researchers used epidemic data from Hubei province, Zhejiang province,
80 and Guangdong province. We selected the most severe cities in these three provinces
81 as our important examples, i.e. Wuhan, Wenzhou, and Shenzhen. In these cases, their
82 time-varying reproduction numbers were used to unfold the effects of interventions,
83 and thus to predict the expected scale of COVID-19 by using the real-time epidemic

84 data in various countries. In doing so, the possible courses of COVID-19 under these
85 interventions in South Korea, Italy, and the United States can be made.

86 Wuhan was the first city of the COVID-19 outbreak with the most severe
87 epidemic in China. It suspended public transportation, cancelled all outbound trains
88 and flights (The prevention and control headquarters of Wuhan, 2020) and started to
89 construct a specialist emergency hospital (i.e. Huoshenshan Hospital) for patients on
90 January 23. All residential areas were closed on February 11, 2020. Wenzhou was the
91 city with the largest number of cumulative confirmed cases in Zhejiang province. In
92 Wenzhou, the inter-provincial and municipal bus services were suspended on January
93 27(Wenzhou Municipal People's Government, 2020a), 14 expressway entrances were
94 temporarily closed from 10 p.m. onwards on January 29 (Wenzhou Municipal
95 People's Government, 2020b), and on February 1, it announced that every household
96 might send one person every two days outside for necessity purchases (Wenzhou
97 Municipal People's Government, 2020c). Shenzhen was the city of the first confirmed
98 case in Guangdong province, and its prevention and control strategy was adopted as a
99 classical case in the report of WHO (2020). On January 24, all the entertainment
100 places were closed. It announced that all the individuals returning from Hubei needed
101 to be isolated at home or other suitable facilities for 14 days on February 2 (Shenzhen
102 Municipal People's Government, 2020a), and the residential units with confirmed
103 cases were forced to implement “hard quarantine” for 14 days and checkpoints were
104 set up in all entrances of residential areas on February 7 (Shenzhen Municipal

105 People's Government, 2020b). All details about the interventions implemented in
106 these cities were given in Figure 1.

107 In this paper, we used the time-varying reproduction number to reflect the effects
108 of interventions implemented in Wuhan, Wenzhou, and Shenzhen, China. Our goal
109 was to predict the likely outcomes of these interventions in South Korea, Italy and the
110 United States so that the lessons can be learned from the key decisions made in the
111 representative cities.

112

113 **Methods**

114 **Data sources**

115 The epidemic data were extracted for Wuhan, Wenzhou, and Shenzhen from the
116 Chinese Center for Disease Control and Prevention (China CDC) (National Health
117 Commission of the People's Republic of China, 2020), and the data for South Korea,
118 Italy and the United States were downloaded through April 23, 2020 from COVID-19
119 Knowledge & Data Hub (Sciences, 2020).

120

121 **Model assumptions and solutions**

122 We introduced Susceptible-Infected and infectious without isolation-Hospitalized in
123 isolation-Removed (SIHR) model with four compartments: Susceptible (S), infected
124 and infectious without isolation (I), hospitalized in isolation (H), removed (R) (Hsieh
125 et al., 2004, Li, 2018). Based on the definitions, we made the following assumptions:

- 126 (a) The susceptible (S) individuals have no immunity to the disease;
- 127 (b) The infected and infectious without isolation (I) were assumed to be
128 infectious since they caught the virus, i.e., ignoring the latent period, and
129 would transform into the hospitalized in isolation eventually after symptoms
130 onset;
- 131 (c) The hospitalized (H) individuals were in isolation and treated carefully and
132 would not transmit COVID-19 to the susceptible;
- 133 (d) The removed (R) individuals would not be infected again.

134 It is crucial to evaluate the number of individuals who are infected and infectious
135 without isolation for the control of epidemic, which remain unknown and are needed
136 to be estimated in SIHR model. Based on the above assumptions, the transfer
137 relationships between S, I, H, R were defined (see Figure 1 in the supplements) and
138 the corresponding dynamic system of these four compartments along with parameters
139 α, β, γ were given in the supplements.

140 The basic reproduction number R_0 , which is the expected number of secondary
141 cases produced by a single (typical) infection in a completely susceptible population
142 (Jones, 2007), is defined by SIHR model:

143
$$R_0 = \alpha/\beta,$$

144 where $1/\beta$ is the mean of the incubation period of COVID-19, and is assumed to be
145 5 days in terms of studies about COVID-19 (Backer et al., 2020, Guan et al., 2020, Li

146 et al., 2020) by ignoring the latent period. To obtain the time-varying reproduction
147 number R_t , we assumed that the parameter α was time variant and would decrease
148 by the influence of interventions. We used logistic function (Tan et al., 2020) to
149 simulate the decreasing trend of the α :

$$150 \quad \alpha_{\alpha_0, d, m}(t) = \frac{\alpha_0}{1 + \exp\left(\lambda_m\left(t - d - \frac{m}{2}\right)\right)},$$

151 where α_0 denotes the maximum contact numbers per person of COVID-19 during
152 the early outbreak, d is the time when the control measures start to be effective and
153 α starts to decline, m represents the duration of a process where the epidemic is to
154 nearly vanish, λ_m is chosen as $\frac{2\log((1-\varepsilon)/\varepsilon)}{m}$ and ε is fixed to be 0.01. The above
155 parameters α_0, d, m are estimated from real epidemic data.

156 The smaller the values of d and m , the earlier effectiveness and the stronger
157 intensity of interventions were implemented, respectively. The graph of time-varying
158 α is given in Figure 2 in supplements.

159 By the setting above, R_t was calculated as:

$$160 \quad R_t = \frac{\alpha_{\alpha_0, d, m}(t)}{\beta}.$$

161 We introduce randomness to SIHR model and applied the Bayesian method
162 combined with Markov Chain Monte Carlo (MCMC) for the estimation of parameters
163 and missing data (Bishop, 2006, Soubeyrand, 2016). Once the prior distribution of the
164 parameters was given, we used Block Metropolis–Hastings algorithm (Andrieu et al.,
165 2000, Andrieu et al., 2003) to simulate the posterior distribution of the parameters and
166 the number of individuals in each class. The point estimates were presented as the

167 median of the posterior distribution while 95% credible intervals were constructed
168 with 2.5% and 97.5% quantiles.

169

170 **Results**

171 **The estimation of policy pattern**

172 To describe the effects of interventions in different cities, we used the data from the
173 starting dates of the COVID-19 outbreak to the dates of well-controlled in each
174 representative cities individually, indicating that the time range for each
175 representative city would be different (Green et al., 2002).

176 Among them, the starting date of the outbreak was defined as the day when the
177 number of hospitalized individuals (H) started to increase and continued to increase
178 for the next three consecutive days, while the date of well-controlled was at which the
179 number of hospitalized individuals (H) started to decrease and continued to decrease
180 for the next three consecutive days (Green et al., 2002). Based on these definitions, we
181 used the data from January 21 to February 9 in Wenzhou and from January 19 to
182 February 6 in Shenzhen. In Wuhan, the starting date was January 15, but the clinical
183 standard was changed on February 12, we used February 11 as the data cutoff for
184 Wuhan. The trends of R_t for representative cities were shown in Figure 2.

185 The initial value of R_t for Wuhan was greater than that for Shenzhen, followed
186 by Wenzhou. The effectiveness of intervention policies for Shenzhen started earlier
187 than that for Wuhan, followed by Wenzhou. The intensity of policies for Wenzhou

188 was stronger than that for Wuhan, followed by Shenzhen. Comparing with details
189 about the interventions implemented in these cities in Figure 1, the effects of these
190 policies could be reasonably reflected and estimated.

191

192 **The mode migration**

193 We applied the SIHR model whose R_t is time-invariant in South Korea, Italy and the
194 United States. We used the real-time epidemic data from February 26 to February 28
195 in South Korea, from March 28 to March 30 in Italy and from March 29 to March 31
196 in the United States and estimated the posterior distributions country by country. And
197 then we migrate the intensity of policy intervention of Wuhan, Wenzhou, and
198 Shenzhen to South Korea, Italy, and the United States, and predict the posterior
199 distributions of numbers of infected and infectious without isolation and cumulative
200 confirmed cases. The simulation of COVID-19 trend for constant R_t and
201 time-varying R_t of three policies of China in South Korea, Italy, and the United
202 States are given as follows (Figures 3-5).

203 From our prediction, if interventions were not implemented since 23 February,
204 the expected cumulative confirmed cases would be 7705971 with corresponding 95%
205 credible intervals (CI) (2419211,17969284) on March 7 when the expected
206 cumulative confirmed cases were over 10% population for the first time in South
207 Korea (Figure 3A). Similarly, the expected cumulative confirmed cases would be
208 6680363 with 95% CI (442494,35236491) on March 29 when the expected

209 cumulative confirmed cases were over 10% population for the first time in Italy
210 (Figure 4A). And the expected cumulative confirmed cases will be 34179685 with 95%
211 CI (5274919,136469414) on April 17 when the expected cumulative confirmed cases
212 will over 10% population for the first time in the United States, if interventions were
213 not implemented since March 13 (Figure 5A). Overall, if interventions were not
214 implemented, it can be expected that how tremendously large populations would be
215 infected in these countries. Thus, the interventions are critical to control the fast
216 spread of the disease. In SIHR model, the estimated number of infected and infectious
217 without isolation (I) could be used to estimate the stage of the epidemic, while the
218 expected cumulative confirmed cases under different policy patterns reflected the
219 magnitude of the outbreak of infectious diseases.

220 Based upon our prediction, the actual cumulative confirmed cases of COVID-19
221 in South Korea from February 26 to March 9 were within the ranges of expected
222 cumulative confirmed cases for Shenzhen pattern, whose intensity was relatively mild
223 compared with both Wuhan and Wenzhou patterns. According to the report (Normile,
224 2020), South Korea has implemented similar interventions to Shenzhen pattern, where
225 it implemented policies closely following and isolating the close contact individuals
226 of confirmed cases to reduce the transmission of COVID-19. Also, as its estimated
227 number of I was 2639 with corresponding 95% CI (2306,3055) on February 26,
228 there is not much difference for the expected cumulative confirmed cases in the
229 simulation of three urban interventions in South Korea (Figure 3B). This indicated

230 that mild policy like Shenzhen pattern implemented at an early stage of epidemic
231 could effectively curb the outbreak of infectious diseases. It is reasonable that South
232 Korea would maintain its current intervention.

233 For Italy, there is a substantial difference in the simulation of three policies
234 implemented, the expected cumulative confirmed cases will be 179571 with 95% CI
235 (165868, 205749) under Wuhan pattern, 146012 with 95% CI (140504, 154264)
236 under Wenzhou pattern and 214881 with 95% CI (187566, 265198) under Shenzhen
237 pattern on May 31, respectively (Figure 4B). The likely outcomes of different
238 interventions were distinct since the estimated number of I was large (25768) on
239 March 28, which implies that it is cautious to carry out a policy at this stage of
240 epidemic. Note that the expected number of cumulative confirmed cases under the
241 interventions of Wenzhou for Italy would be the smallest. There were the most
242 intense efforts in the interventions of Wenzhou for both suspending inner and outer
243 public transportations (middle-distance prevention) and restricting residents out
244 (short-distance prevention). It was required that such a large-scale response mounted
245 to block the broad extent of transmission not only inside of city but also inside of
246 communities.

247 Comparing the actual situations of Italy, the cumulative confirmed cases were
248 187,327 on April 23, 2020, which were 28.7% more than the simulation of
249 COVID-19 under interventions of Wenzhou. If taking such highly stringent
250 interventions, the epidemic situation could be mitigated where the expected number

251 of cumulative confirmed cases would be 146,012 on May 31, decreasing by 19% and
252 32% compared to the implementation of policy of Wuhan and Shenzhen, respectively.

253 In the United States, there is a considerable difference from the policy of
254 Shenzhen compared with other two patterns. The expected cumulative confirmed
255 cases will be 694055 with 95% CI (665937,725910) under Wuhan pattern, 400642
256 with 95% CI (390331,409431) under Wenzhou pattern and 1096227 with 95% CI
257 (1037815,1172518) under Shenzhen pattern on May 31, respectively. One reason for
258 this distinction is that the number of I was 83232 (Figure 5B) on March 29, which
259 implied certain risks for long-term outbreak of epidemic. The cumulative confirmed
260 cases were 849094 on April 23, 2020, and were 113.3% more than the simulation of
261 COVID-19 under interventions of Wenzhou, which implied that the implementations
262 of interventions of Wenzhou may significantly decrease the magnitude of the
263 outbreak of COVID-19 for the United States. If taking the relatively mild
264 interventions of Shenzhen, the situation would get worse and the expected cumulative
265 confirmed cases would be over 1000000 in the United States on May 31.

266

267 **Discussion**

268 Our simulation results indicated that the mild interventions were difficult to control
269 the magnitude of outbreak of infectious diseases when the number of infected and
270 infectious without isolation (I) was quite large, but it was effective to implement at
271 the early stage of epidemic. Once the epidemic became severe, the highly stringent

272 interventions were needed to be implemented for the control of epidemic. Although it
273 still takes time to make a reasonable assessment of the patterns and effects of these
274 policies, the transmission patterns of COVID-19 under some typical intervention
275 measures could be learned from them, and the transmission trend of COVID-19 could
276 be predicted.

277 In general, there are no one-size-fits-all interventions applicable for all regions
278 (Wu et al., 2020). Taking any potential interventions depends on the specific setting
279 of the region. We did not quantitatively measure the details of interventions and did
280 not consider public health and economic costs of interventions in our analysis.
281 However, the likely outcomes of interventions were predicted to inform the
282 policymakers to consider the appropriate sets of proactive interventions.

283

284 **Author contributions:**

285 All authors attest that they meet the ICMJE criteria for authorship. TT and XW had
286 roles in the study design, data collection, data analysis, data interpretation, literature
287 search, and developed the idea and research. TT, JZ, SL, YJ and JT wrote the first
288 draft of the manuscript and all other authors discussed results and edited the
289 manuscript. JZ, SL, YJ and JT had roles in the data collection, data analysis, and ZL
290 had roles in the data interpretation. TT, JZ, SL, YJ, and JT contributed equally to this
291 article. All authors reviewed and approved the final version of the manuscript.

292

293 **Funding:**

294 Dr Xueqing Wang is partly supported by the National Key Research and
295 Development Program of China, the National Natural Science Foundation of
296 China and the Key Research and Development Program of Guangdong, China and Dr
297 Zhongfei Li is partly supported by the National Natural Science Foundation of China.

298

299 **Conflict of interest**

300 All authors declare no competing interests.

301

302 **Acknowledgements**

303 We would like to thank all individuals who are collecting epidemiological data of the
304 COVID-19 outbreak around the world. This study was partly supported by the
305 National Key Research and Development Program of China (Grant No.
306 2018YFC1315400), the National Natural Science Foundation of China (Grant No.
307 11771462, and Grant No. 71991474), the Key Research and Development Program of
308 Guangdong, China (Grant No. 2019B020228001) and Fundamental Research Funds
309 for the Central Universities (Grant No. 19lgpy236).

310

311

312

313

314 **References**

- 315 1. Andrieu C, de Freitas N, Doucet A. Sequential Bayesian estimation and model
316 selection for dynamic kernel machines. 2000.
- 317 2. Andrieu C, De Freitas N, Doucet A, Jordan MI. An introduction to MCMC for
318 machine learning. *Machine learning* 2003;50(1-2):5-43.
- 319 3. Backer JA, Klinkenberg D, Wallinga J. Incubation period of 2019 novel
320 coronavirus (2019-nCoV) infections among travellers from Wuhan, China, 20-28
321 January 2020. *Euro Surveill* 2020;25(5).
- 322 4. Bishop CM. *Pattern recognition and machine learning*: springer, 2006.
- 323 5. Cauchemez S, Boelle PY, Thomas G, Valleron AJ. Estimating in real time the
324 efficacy of measures to control emerging communicable diseases. *Am J Epidemiol*
325 2006;164(6):591-7.
- 326 6. Green MS, Swartz T, Mayshar E, Lev B, Leventhal A, Slater PE, et al. When is an
327 epidemic an epidemic? *The Israel Medical Association journal: IMAJ*
328 2002;4(1):3-6.
- 329 7. Guan W-j, Ni Z-y, Hu Y, Liang W-h, Ou C-q, He J-x, et al. Clinical Characteristics
330 of Coronavirus Disease 2019 in China. *New England Journal of Medicine* 2020.
- 331 8. Hsieh Y-H, Lee J-Y, Chang H-L. SARS epidemiology modeling. *Emerging*
332 *infectious diseases* 2004;10(6):1165.
- 333 9. Jones JH. *Notes on R0*. California: Department of Anthropological Sciences 2007.
- 334 10. Li MY. *An introduction to mathematical modeling of infectious diseases*: Springer,

- 335 2018.
- 336 11. Li Q, Guan X, Wu P, Wang X, Zhou L, Tong Y, et al. Early Transmission
337 Dynamics in Wuhan, China, of Novel Coronavirus–Infected Pneumonia. New
338 England Journal of Medicine 2020.
- 339 12. Lipsitch M, Finelli L, Heffernan RT, Leung GM, Redd SC, Group HnS.
340 Improving the evidence base for decision making during a pandemic: the example
341 of 2009 influenza A/H1N1. Biosecur Bioterror 2011;9(2):89-115.
- 342 13. National Bureau of Statistics in China. National Economy Withstood the Impact
343 of COVID-19 in the First Two Months; 2020. Available from:
344 http://www.stats.gov.cn/english/PressRelease/202003/t20200316_1732244.html.
- 345 14. National Health Commission of the People's Republic of China. Distribution of
346 COVID-19 cases in China; 2020. Available from:
347 <http://2019ncov.chinacdc.cn/2019-nCoV/index.html>. [Accessed April 26, 2020].
- 348 15. Normile D. Coronavirus cases have dropped sharply in South Korea. What's the
349 secret to its success. Science 2020.
- 350 16. World Health Organization. Report of the WHO-China Joint Mission on
351 Coronavirus Disease 2019 (COVID-19). 2020.
- 352 17. Sciences CAo. COVID-19 Knowledge & Data Hub; 2020. Available from:
353 <http://geodoi.ac.cn/covid-19/en/index.aspx>.
- 354 18. Shenzhen Municipal People's Government. Circular of the prevention and control
355 headquarters of pneumonia epidemic caused by new coronavirus infection in

- 356 Shenzhen; 2020a. Available from:
- 357 http://www.sz.gov.cn/szzt2010/yqfk2020/szzxd/zczy/zcwj/fkzc/content/post_6725
- 358 [195.html](http://www.sz.gov.cn/szzt2010/yqfk2020/szzxd/zczy/zcwj/fkzc/content/post_6725).
- 359 19. Shenzhen Municipal People's Government. Shenzhen issued three epidemic notice!
- 360 To the citizens living in shenzhen, to the personnel in shenzhen, the enterprises in
- 361 shenzhen; 2020b. Available from:
- 362 http://www.sz.gov.cn/cn/xxgk/zfxxgj/zwdt/content/post_6697629.html.
- 363 20. Soubeyrand S. Construction of semi-Markov genetic-space-time SEIR models and
- 364 inference. 2016.
- 365 21. Tan J, Jinag Y, Tian T, Wang X. P-SIHR probabilistic graphical model: An
- 366 applicable model of COVID-19 in estimating the number of infectious individuals
- 367 without isolation and time-varying reproduction number. Acta Mathematicae
- 368 Applicatae Sinica 2020;42(3).
- 369 22. The prevention and control headquarters of Wuhan. Circular of the prevention and
- 370 control headquarters of pneumonia epidemic caused by new cornoavirus infection
- 371 in Wuhan (No.1); 2020. Available from:
- 372 http://www.gov.cn/xinwen/2020-01/23/content_5471751.htm.
- 373 23. Wallinga J, Teunis P. Different Epidemic Curves for Severe Acute Respiratory
- 374 Syndrome Reveal Similar Impacts of Control Measures. American Journal of
- 375 Epidemiology 2004;160(6):509-16.
- 376 24. Wenzhou Municipal People's Government. Notice of the Leading Group for the

- 377 Prevention and Control of COVID-19 in Wenzhou (No. 3); 2020a. Available from:
378 http://www.wenzhou.gov.cn/art/2020/1/28/art_1219304_41858870.html.
379 [Accessed March 31, 2020].
- 380 25. Wenzhou Municipal People's Government. Notice of the Leading Group for the
381 Prevention and Control of COVID-19 in Wenzhou (No. 4); 2020b. Available from:
382 http://www.wenzhou.gov.cn/art/2020/1/30/art_1219304_41862456.html.
383 26. Wenzhou Municipal People's Government. Notice of the Leading Group for the
384 Prevention and Control of COVID-19 in Wenzhou (No. 6); 2020c. Available from:
385 http://www.wenzhou.gov.cn/art/2020/2/2/art_1219304_41867466.html. [Accessed
386 March 31, 2020].
- 387 27. World Health Organization. Rolling updates on coronavirus disease (COVID-19);
388 2020a. Available from:
389 [https://www.who.int/emergencies/diseases/novel-coronavirus-2019/events-as-they](https://www.who.int/emergencies/diseases/novel-coronavirus-2019/events-as-they-happen)
390 [-happen](https://www.who.int/emergencies/diseases/novel-coronavirus-2019/events-as-they-happen). [Accessed April 20, 2020].
- 391 28. World Health Organization. WHO Director-General's opening remarks at the
392 media briefing on COVID-19-11 March 2020; 2020b. Available from:
393 [https://www.who.int/dg/speeches/detail/who-director-general-s-opening-remarks-a](https://www.who.int/dg/speeches/detail/who-director-general-s-opening-remarks-at-the-media-briefing-on-covid-19---11-march-2020)
394 [t-the-media-briefing-on-covid-19---11-march-2020](https://www.who.int/dg/speeches/detail/who-director-general-s-opening-remarks-at-the-media-briefing-on-covid-19---11-march-2020).
- 395 29. Wu JT, Leung K, Leung GM. Nowcasting and forecasting the potential domestic
396 and international spread of the 2019-nCoV outbreak originating in Wuhan, China:
397 a modelling study. *The Lancet* 2020.

398 30. Xinhuanet. No local newly confirmed cases for the first time in China; 2020.

399 Available from:

400 http://www.xinhuanet.com/politics/2020-03/18/c_1125730531.htm.

401 31. Yang Z, Zeng Z, Wang K, Wong S-S, Liang W, Zanin M, et al. Modified SEIR and

402 AI prediction of the epidemics trend of COVID-19 in China under public health

403 interventions. Journal of Thoracic Disease 2020.

404

405

406

407

408

409

410

411

412

413

414

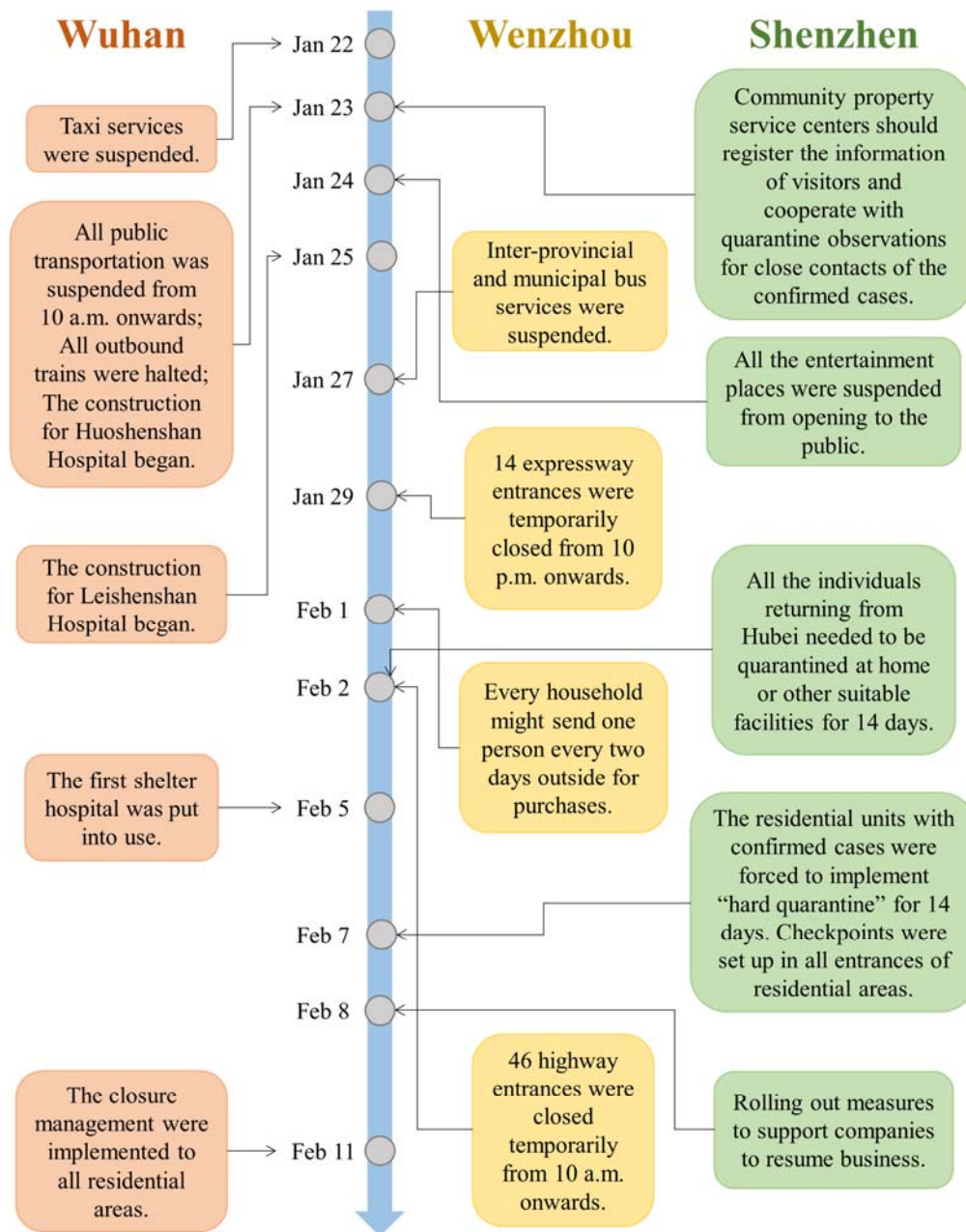
415

416

417

418

419



420

421 **Figure 1. The timeline of interventions implemented in Wuhan, Wenzhou, and**

422 **Shenzhen.**

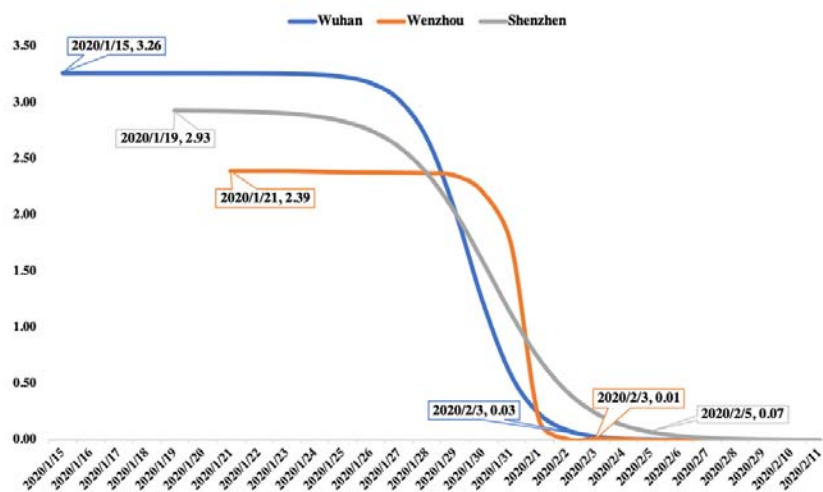
423

424

425

426

427



428

429 **Figure 2. The trends of R_t for Wuhan, Wenzhou and Shenzhen.**

430

431

432

433

434

435

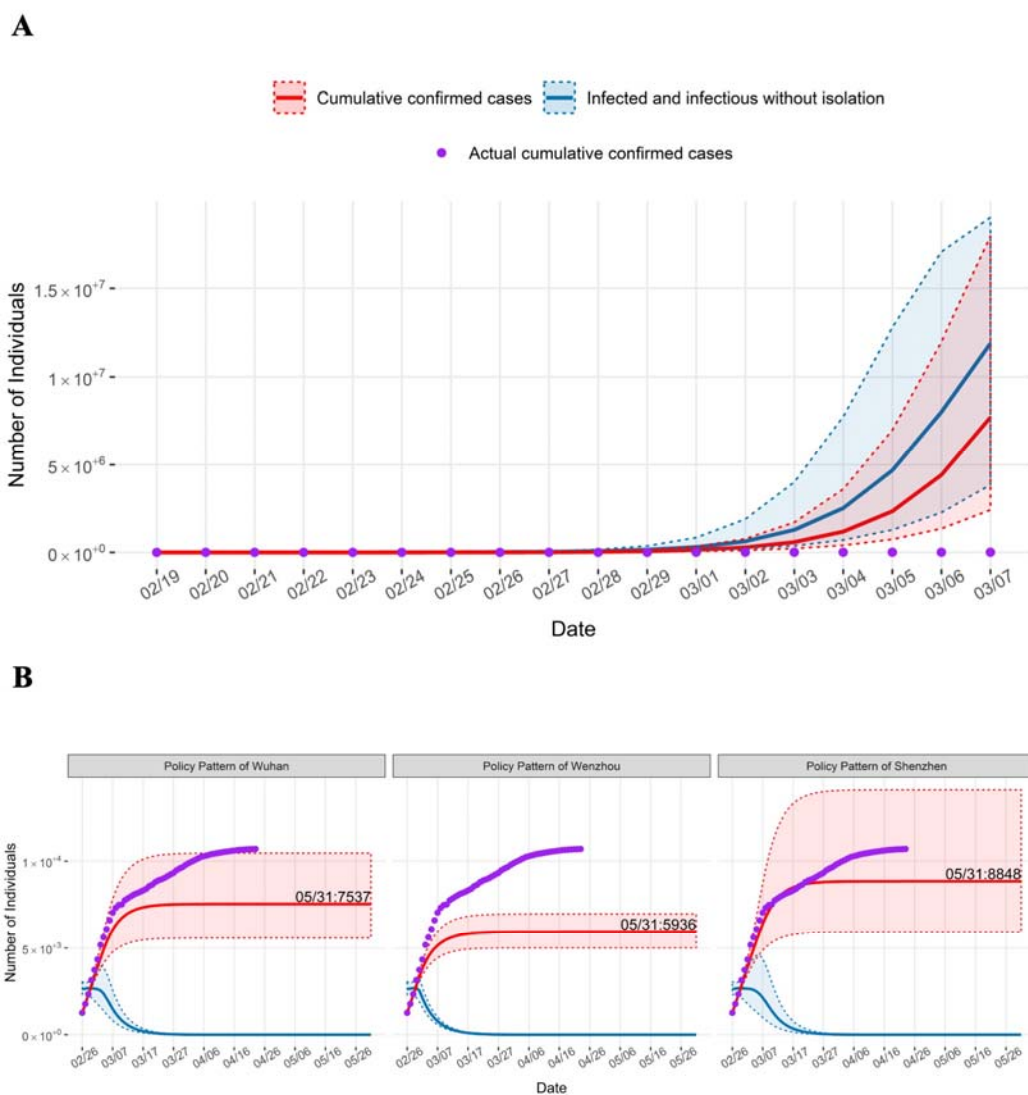
436

437

438

439

440



441

442 **Figure 3. The simulation of COVID-19 trend for constant R_t (A) and**

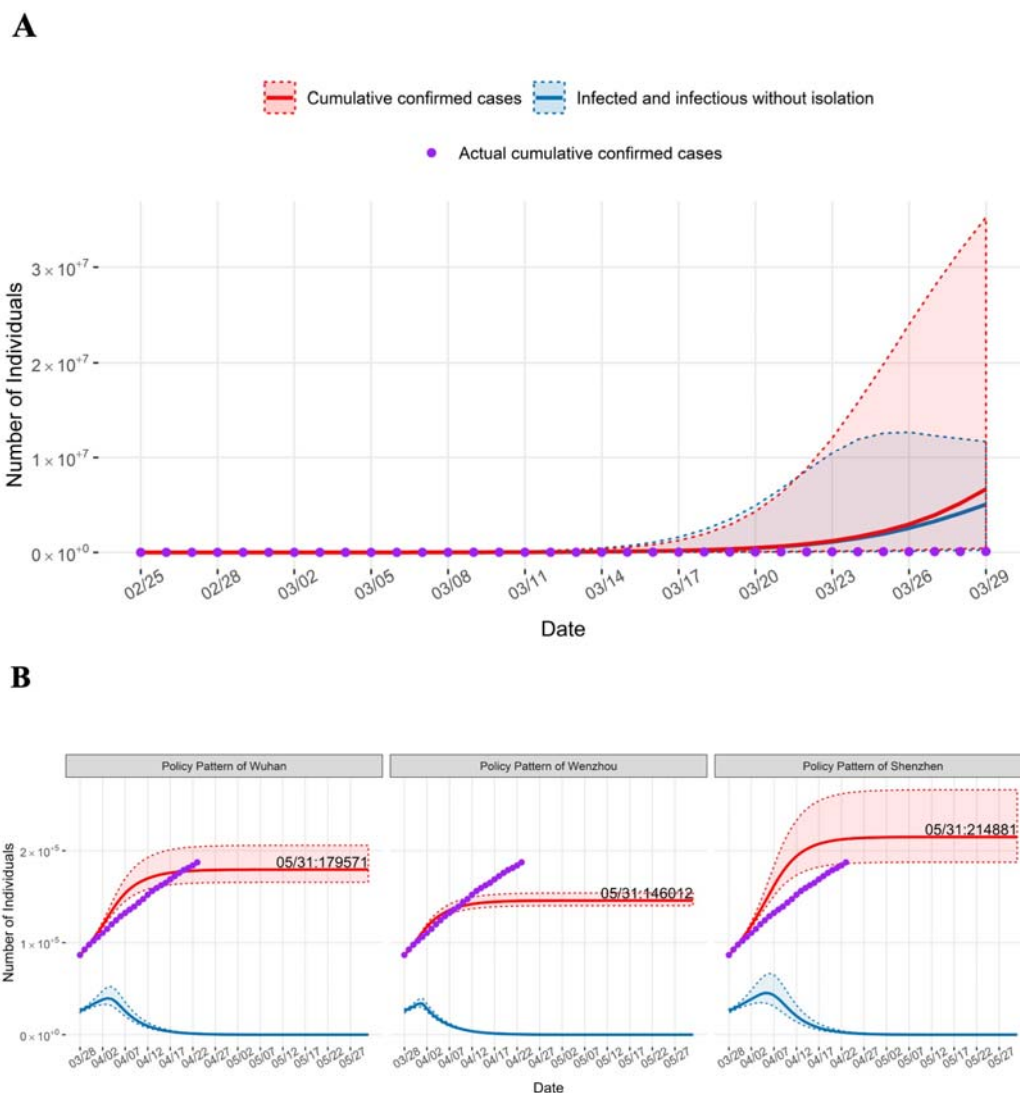
443 **time-varying R_t (B) of three policies in South Korea. The red curve with**

444 **corresponding dashed lines represents the expected cumulative confirmed cases with**

445 **95% CI and the blue curve with corresponding dashed lines represent the expected**

446 **number of infected and infectious without isolation (I) with 95% CI.**

447



448

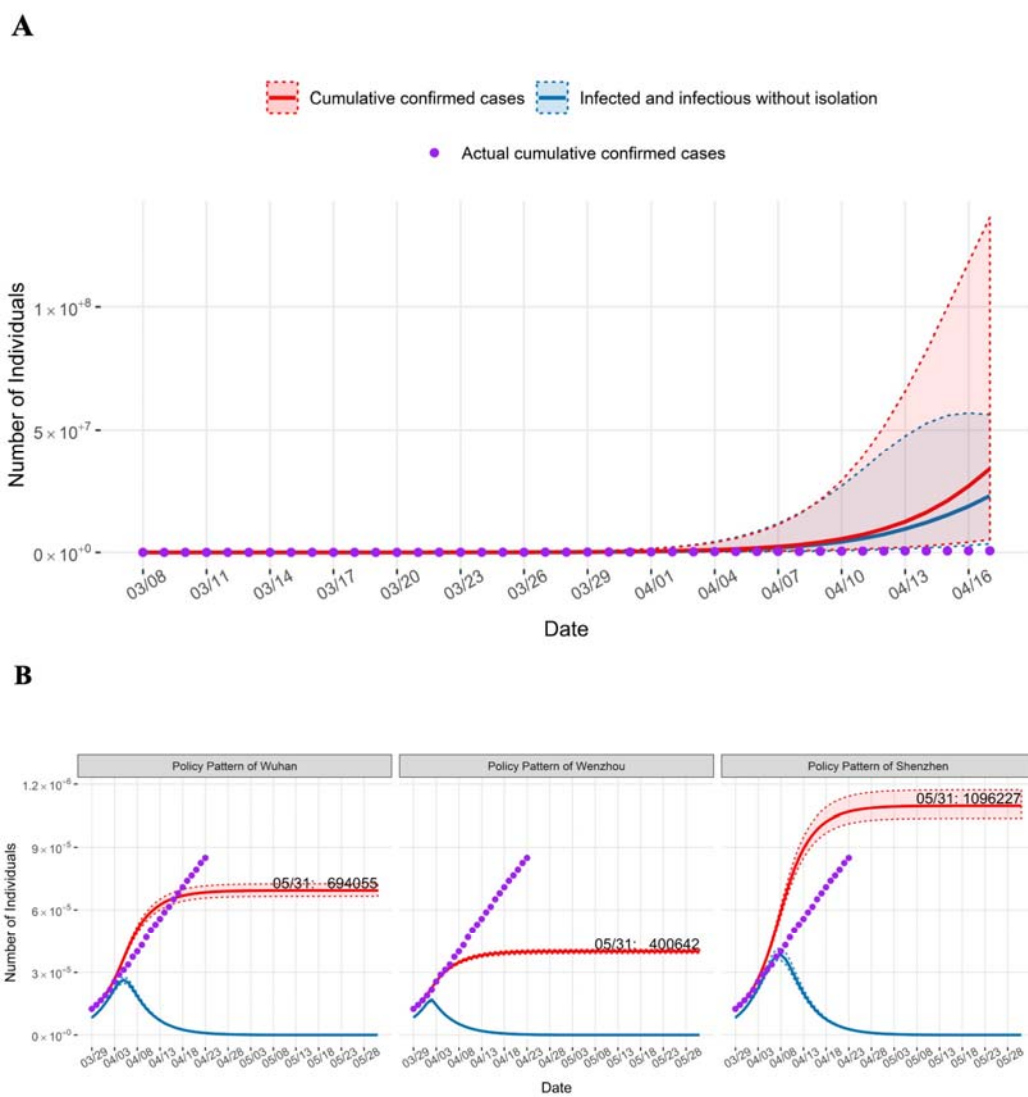
449 **Figure 4. The simulation of COVID-19 trend for constant R_t (A) and**

450 **time-varying R_t (B) of three policies in Italy. The red curve with corresponding**

451 **dashed lines represents the expected cumulative confirmed cases with 95% CI and the**

452 **blue curve with corresponding dashed lines represent the expected number of infected**

453 **and infectious without isolation (I) with 95% CI.**



454

455 **Figure 5. The simulation of COVID-19 trend for constant R_t (A) and**

456 **time-varying R_t (B) of three policies in the United States. The red curve with**

457 **corresponding dashed lines represents the expected cumulative confirmed cases with**

458 **95% CI and the blue curve with corresponding dashed lines represent the expected**

459 **number of infected and infectious without isolation (I) with 95% CI.**

460

461

462 **Supplementary Information:**

463 Stochastic SIHR model

464 COVID-19 prevalence

465 Model validity

466

467